



**HAL**  
open science

## Dictionary learning via regression: vascular MRI application

Fabien Boux, Florence Forbes, Julyan Arbel, Emmanuel Barbier

► **To cite this version:**

Fabien Boux, Florence Forbes, Julyan Arbel, Emmanuel Barbier. Dictionary learning via regression: vascular MRI application. CNIV 2019 - 3e Congrès National d'Imagerie du Vivant, Feb 2019, Paris, France. pp.1-12. hal-02428647

**HAL Id: hal-02428647**

**<https://hal.science/hal-02428647v1>**

Submitted on 6 Jan 2020

**HAL** is a multi-disciplinary open access archive for the deposit and dissemination of scientific research documents, whether they are published or not. The documents may come from teaching and research institutions in France or abroad, or from public or private research centers.

L'archive ouverte pluridisciplinaire **HAL**, est destinée au dépôt et à la diffusion de documents scientifiques de niveau recherche, publiés ou non, émanant des établissements d'enseignement et de recherche français ou étrangers, des laboratoires publics ou privés.



# Dictionary learning via regression: vascular MRI application

---

Fabien Boux<sup>1,2</sup>, Florence Forbes<sup>1</sup>, Julyan Arbel<sup>1</sup> and Emmanuel Barbier<sup>2</sup>

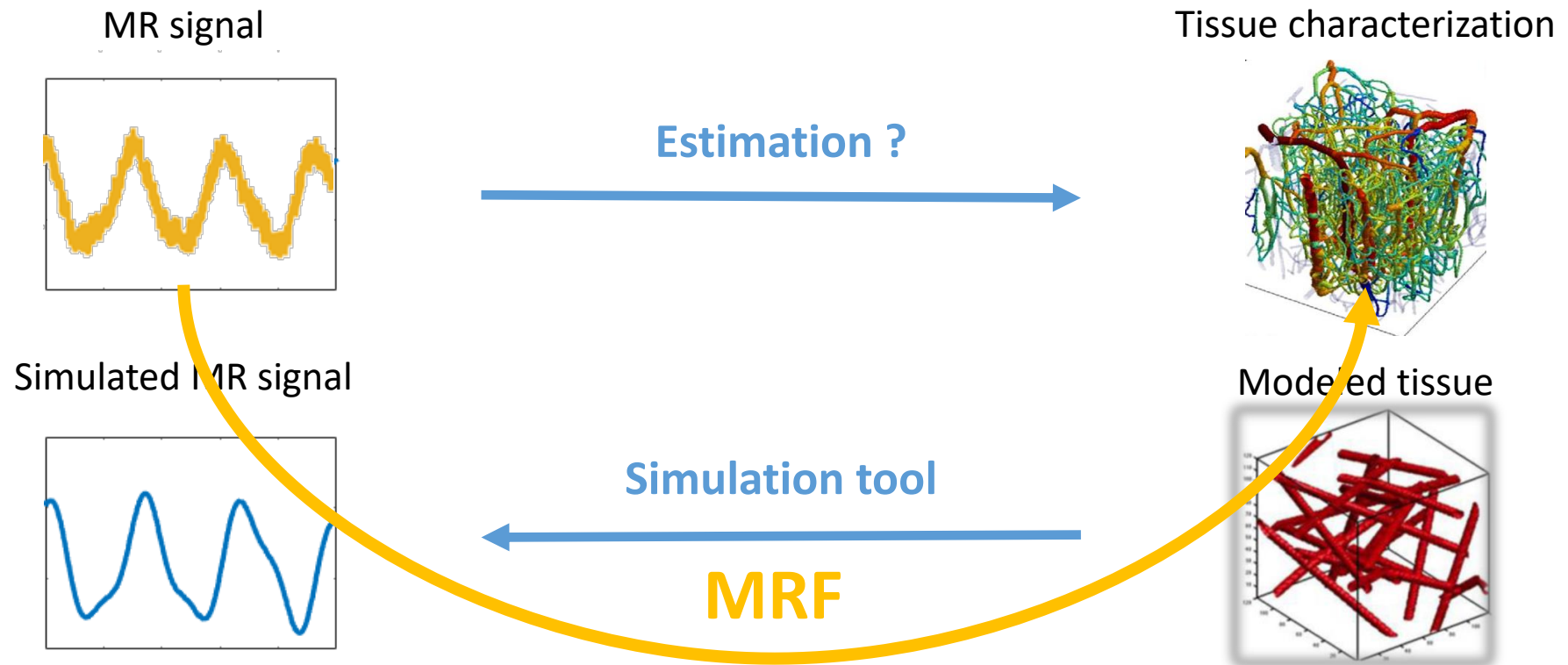
<sup>1</sup>*INRIA Grenoble Rhône-Alpes / LJK Laboratoire Jean Kuntzmann*

<sup>2</sup>*Grenoble Institut des Neurosciences (GIN)*

Congrès National d'Imagerie du Vivant (CNIV) - 4<sup>th</sup> February 2019

# Magnetic Resonance Fingerprinting (MRF)

Idea in the context of microvascularization



# Magnetic Resonance Fingerprinting (MRF)

Principle

## 2-step procedure:

### 1. Dictionary design

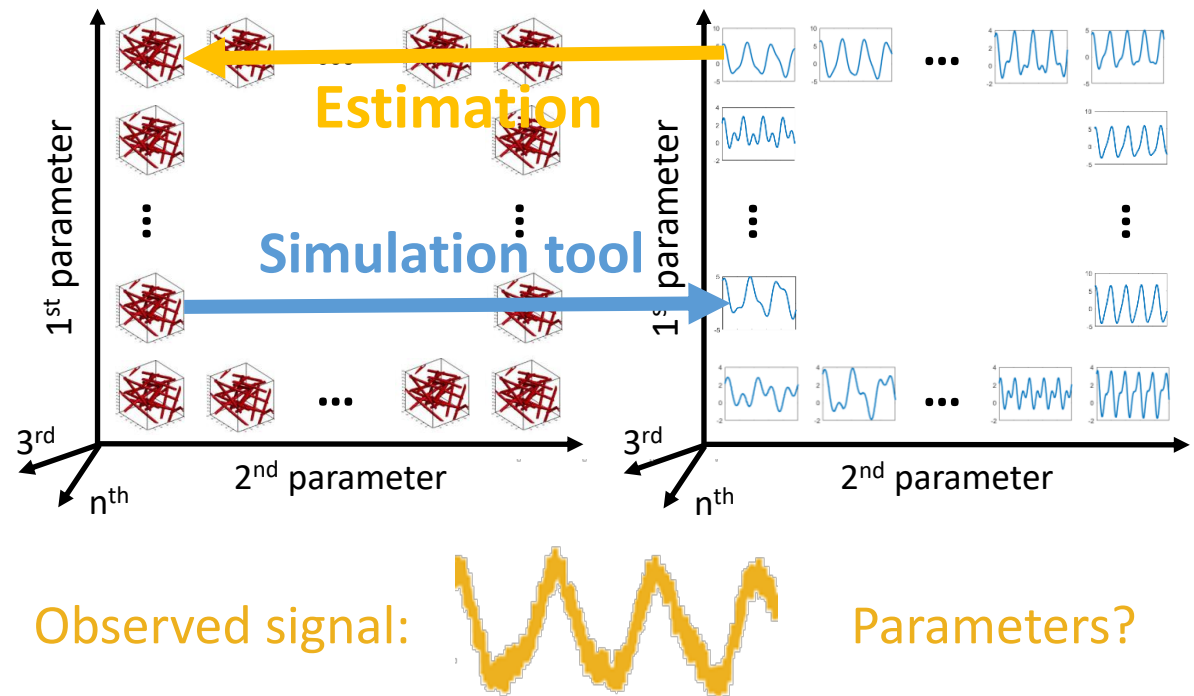
Grid formation

MR signal simulations

### 2. Matching procedure

Distance computations

Estimation



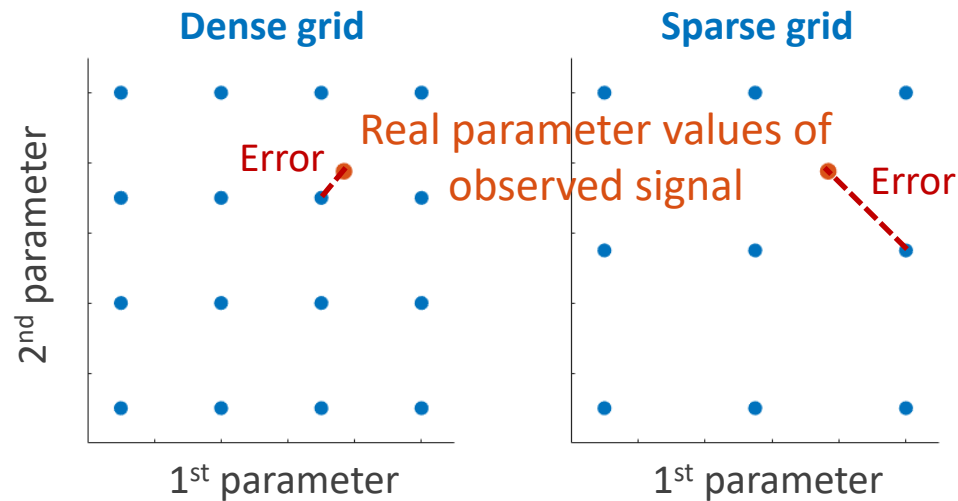
Appeal of the MRF method: **fast**, **robust**, **accurate** and **flexible**

# Limitations

Complex model and time-consuming simulation

---

The denser the grid, the more accurate the estimates



Typical dictionary size order:  
 $\approx 100^{\text{Nber of parameters}}$

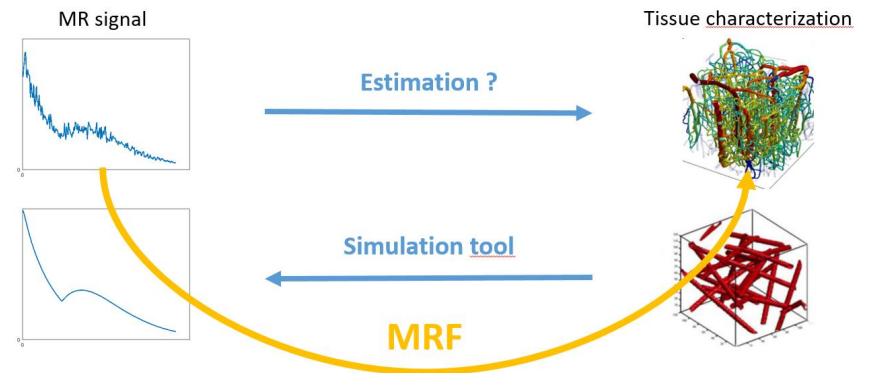
How to limit the growth of the dictionary while increasing the number of parameters ?

---

# Solve the inverse problem

High-to-low regression context

Find a way to reduce the dictionary sizes (keeping the estimation accuracy of MRF)



- Nearest-neighbor methods → [D. Ma, *MRF* (2013)]
- **Dictionary learning = regression**, characteristics:
  - Nonlinear
  - From high-dimensional space to low-dimensional space

# Proposed solution: regression

High-to-low regression context

---

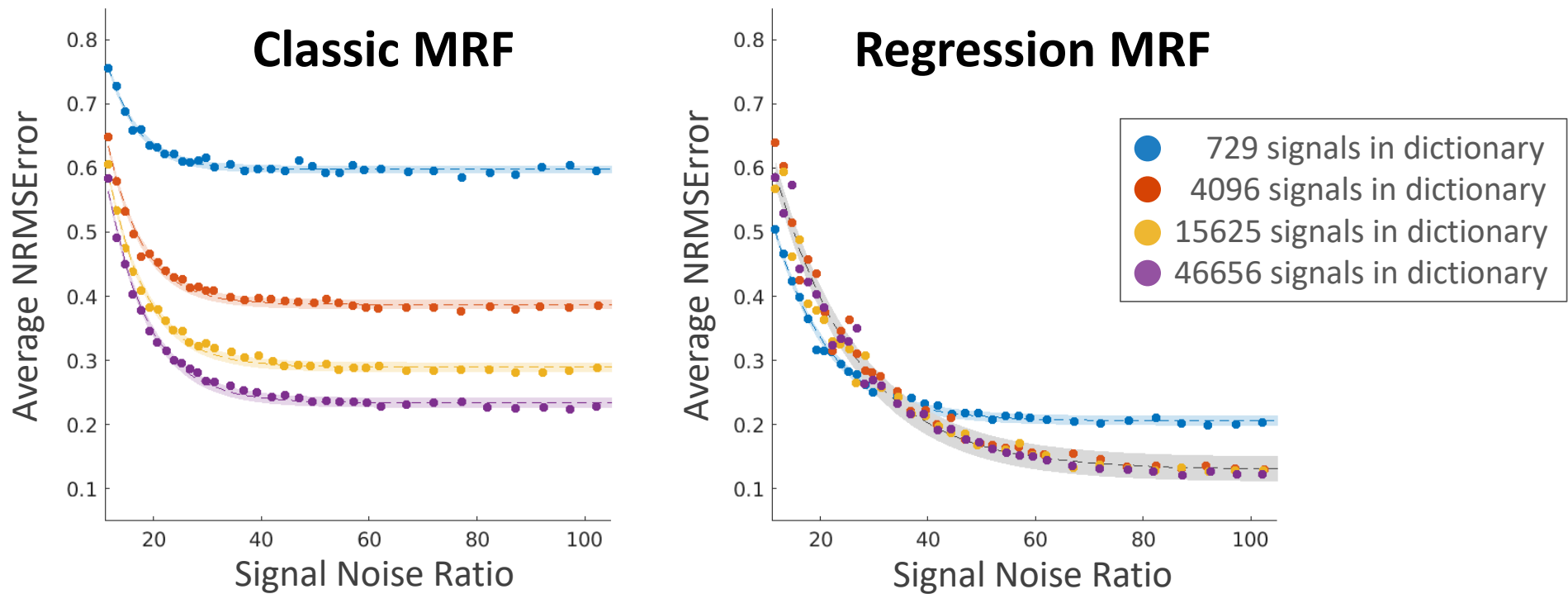
- Kernel methods and local regression → [G. Nataraj, *PERK* (2017)]
- Neural Networks → [O. Cohen, *DRONE* (2018)]
- Model inference → ***Proposed approach***

## Gaussian locally-linear mapping (GLLiM)

- Solves nonlinear mapping problem automatically
- Solves the *inverse problem*, then derives the *forward model* parameters

# Results

Synthetic data



Extremely fast and accurate estimation of 6 parameters while reducing the dictionary size by a factor  $> 60$

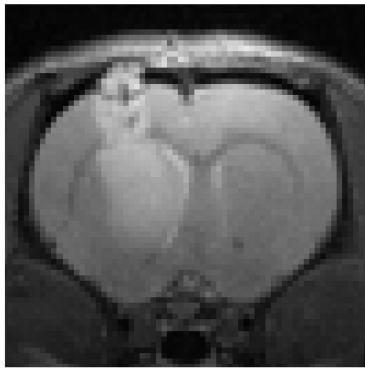


# Results

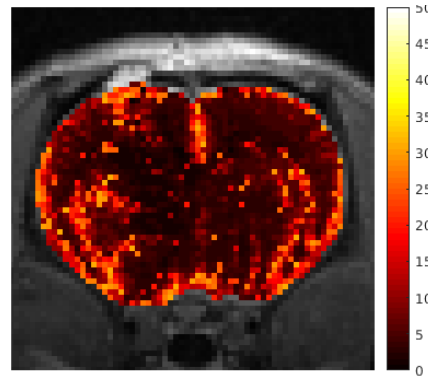
Real data

Blood Volume fraction maps (%)

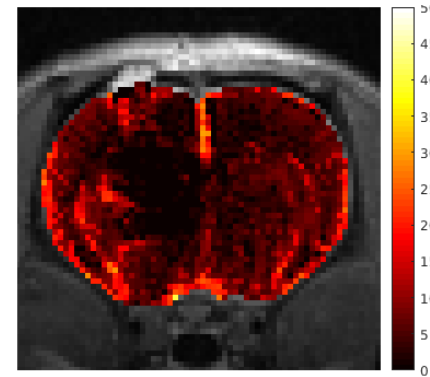
Anatomical image



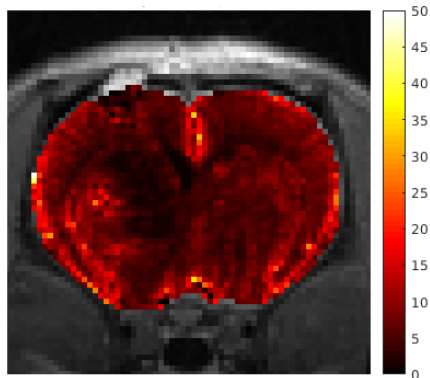
Classic MRF estimates ( $10^5$  signals)



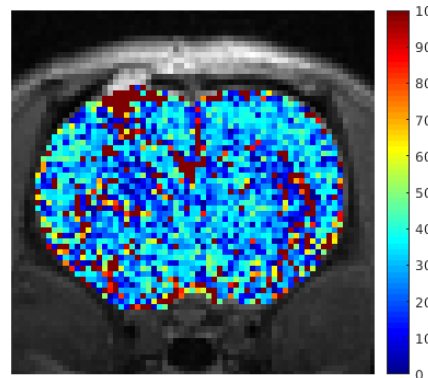
Regression MRF estimates ( $10^4$ )



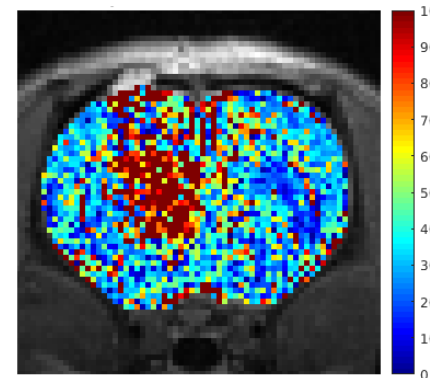
Analytical approach



Relative differences (%)



Relative differences (%)

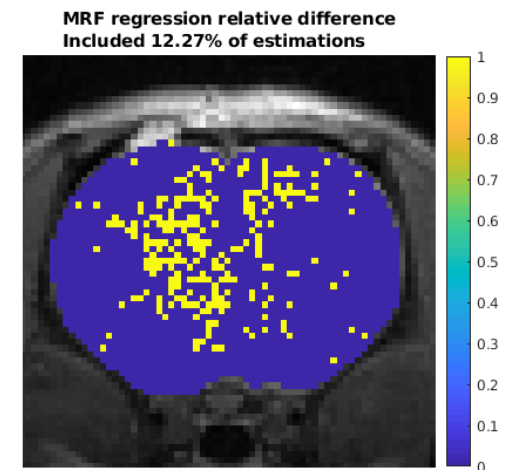
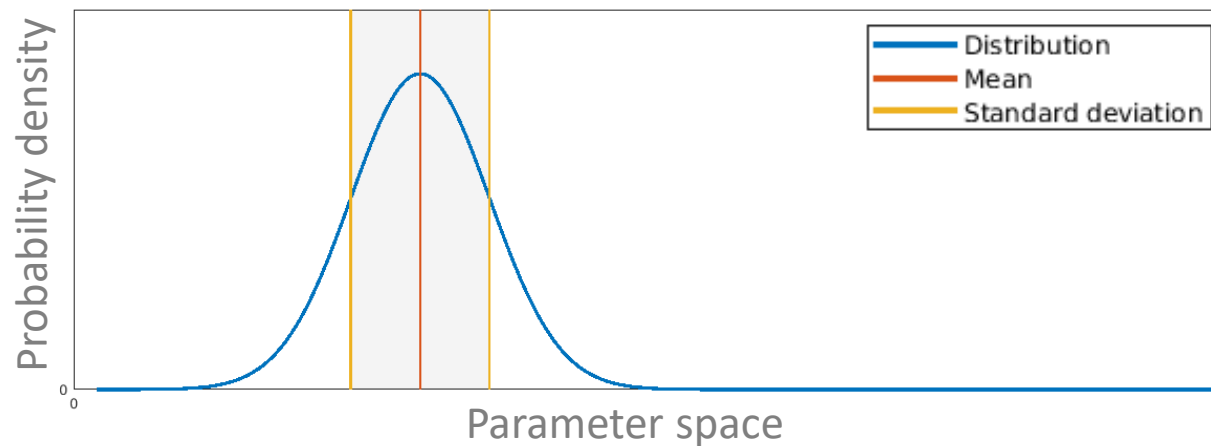


# Results

## Confidence index

GLLiM has the advantage to provide a full posterior distribution, from this distribution we compute:

- the **mean** to obtain the **parameter estimation**
- the **standard deviation** to obtain a **confidence index** related to



# Summary

Previous and future works

---

- Very fast computation of estimates
- Important dictionary size reduction factor
- Accurate estimates (both on synthetic and real data)

Work not presented:

- Dictionary conception

Future work:

- Compare with neural network regressions
- Validate results with histology

# References

---

## MRF methods:

- Ma, Dan, et al., Magnetic resonance fingerprinting, *Nature* (2013)
- Nataraj, Gopal, Jon-Fredrik Nielsen, and Jeffrey A. Fessler, *Dictionary-free mri parameter estimation via kernel ridge regression*, ISBI (2017)
- Cohen, Ouri, Bo Zhu, and Matthew S. Rosen, *MR fingerprinting Deep RecOnstruction NEtwork (DRONE)*, MRM (2018)

## Simulation tool:

- Pannetier, Nicolas Adrien, et al., *A simulation tool for dynamic contrast enhanced MRI*, PloS one (2013)

## Regression:

- Deleforge, Antoine, Florence Forbes, and Radu Horaud, *High-dimensional regression with gaussian mixtures and partially-latent response variables*, *Statistics and Computing* (2015)

## Data:

- Lemasson, B., et al., MR vascular fingerprinting in stroke and brain tumors models, *Scientific reports* (2016)

# Thank you for listening

---



*fabien.boux@univ-grenoble-alpes.fr*

---