

Spatial analysis for the assessment of the environmental changes in the landscapes of Izmir surroundings

Presented at
10th International Conference on
Environmental, Cultural, Economic and Social Sustainability
Split, Croatia

Polina Lemenkova

January 22, 2014

Table of Contents

Study Area

- Research Problem

- Research Questions and Goals

Methods

- Data Import

- Data Conversion

- Creating Multi-band Color Composite

- Selecting Area of Interest (AOI)

- Clustering Segmentation

- Clustering: Algorithm

- Clustering: Visualization

Results

Accuracy Assessment

- Verification via the Google Earth: Algorithm

- Error Matrix

- Final Calculations

- Kappa Statistics

- Comments on Table

Conclusions

Thanks

References

Bibliography

Research Problem



The study region is located in western Turkey, Izmir surroundings.

The region has strong anthropogenic pressure: well developed transport network, intensive shipping and maritime constructions, industrial factories, plants, densely populated urban districts, intensive agricultural cultivation.

Research Problem:

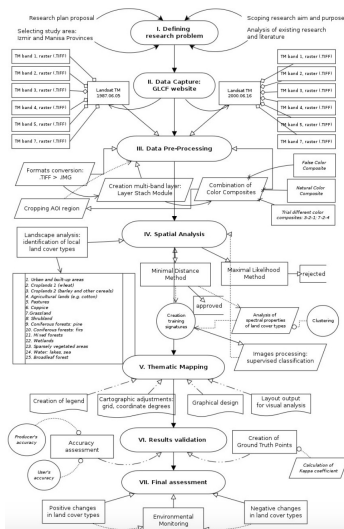
- ▶ The region of Izmir is a particular part of Turkey: it has unique landscapes with variety of vegetation types, diverse relief and natural reserve areas;
- ▶ The vegetation within the Aegean region has very complex character;
- ▶ Area is characterized by the the variety, biogeographical diversity and richness;
- ▶ At the same time, Izmir, a third large metropolis of Turkey, is an industrial city of high importance;
- ▶ Izmir is a key seaport harbor, strategic for the country and Mediterranean region;



Western Turkey, Izmir region. Landscapes from the aerial view. Source: Google Earth

Research Questions and Goals:

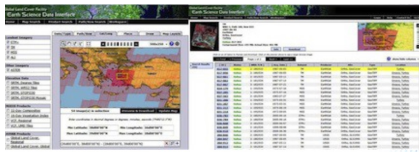
- ▶ How landscapes within the test area of Izmir region changed due to the anthropogenic effects
- ▶ Visualization of the landscapes in the given time scope of 13 years (1987-2000)
- ▶ If there are changes, what are the exact areas (in ha or km) occupied by every land cover type.
- ▶ Calculate & Assess Accuracy.
- ▶ How can remote sensing (RS) data and GIS tools of Erdas Imagine be used for answering questions (1) and (2).
- ▶ Demonstration & Discussion



- ▶ Data import and conversion
- ▶ Creating multi-band layer & color composite Selecting AOI (Area Of Interest)
- ▶ Clustering segmentation and classification GIS Mapping
- ▶ Verification via Google Earth
- ▶ Accuracy Assessment
- ▶ Analyzing results

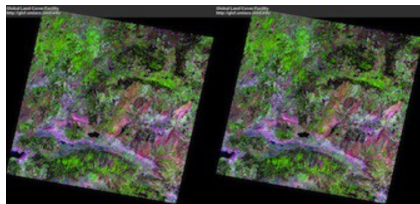
Methodological Flowchart

Data Import



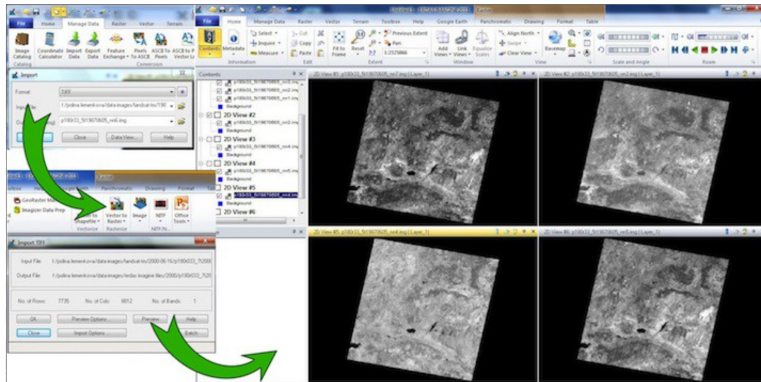
- ▶ Study Area. Selecting study area covered by Landsat TM scenes.
- ▶ GLCF website: Landsat Thematic Mapper (TM)
- ▶ Global Land Cover Facility (GLCF) Earth Science Data Interface
- ▶ Analysis of vegetation types: images taken during summer (June).

For selecting target area, a spatial mask of coordinates ranging from 26°00'-26°00' E to 38°00'-39°00' N was applied.



- ▶ Target images: 1987 and 2000
- ▶ Time span of 13-years (1987-2000)
- ▶ Change detection in the land cover types.

Data Conversion



Conversion of raw .TIFF Landsat TM images into Erdas Imagine ".img" format.

Creating Multi-band Color Composite

LAYERSTACK Conditional

INPUT RASTER #1 INPUT RASTER #2

Conditional LAYERSTACK Using Spatial Metadata nodes

OUTPUT RASTER

The image displays a sequence of screenshots from the ArcGIS Desktop software interface, illustrating the steps to create a multi-band color composite:

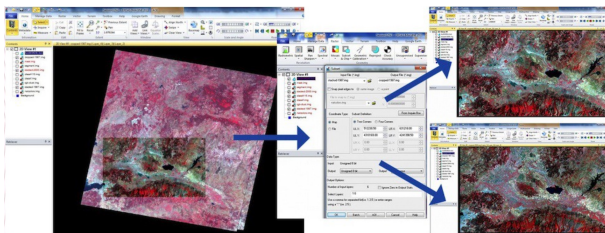
- Layer Selection and Stacking:** The 'Layer Selection and Stacking' dialog box is shown, with 'Input File 1.img' selected. The 'Layer' list contains several files with the same name.
- Process Tool:** The 'Process Tool' dialog box is shown, with the 'Conditional LAYERSTACK Using Spatial Metadata' tool selected. The 'Tool Parameters' section shows the tool is ready to be executed.
- Layer Selection and Stacking (continued):** The 'Layer Selection and Stacking' dialog box is shown again, with the 'Layer' list updated to include the output raster from the previous step.
- Layer Selection and Stacking (continued):** The 'Layer Selection and Stacking' dialog box is shown with the 'Layer' list updated to include the output raster from the previous step.

On the right side, two screenshots show the final result: a multi-band color composite image displayed in the 'Contents' pane and the 'Data View' pane of the ArcGIS Desktop interface.

Selecting AOI

Test area: Izmir surroundings.

- ▶ Test area: Manisa and Izmir provinces covering various landscapes types;
- ▶ AOI ecological diversity: urban built-up areas, coastal zone, agricultural crop areas, hilly landscapes;
- ▶ Urban areas located on the coastal area of the Aegean Sea with ca. 4 M people;
- ▶ Human impact on the environment: demographic, cultural & economic pressure;
- ▶ This is reflected in various land cover types, landscapes patterns, heterogeneity;



- ▶ Left: Selecting AOI from the overlapping initial Landsat images.
- ▶ Center: adjusting parameters, Erdas Imagine.
- ▶ Right: AOI 1987 (above) and AOI 2000 (below).

Clustering Segmentation

Principle of clustering segmentation:

- ▶ The logical algorithmic approach of clustering segmentation consists in merging pixels on the images into clusters.
- ▶ Grouping pixels is based on the assessment of their homogeneity, that is, distinguishability from the neighboring pixel elements.
- ▶ Clusters enable to analyze spectral & textural characteristics of the land cover types, i.e. to perform spatial analysis.
- ▶ Accurate cluster segmentation of the images is an important step for supervised classification.

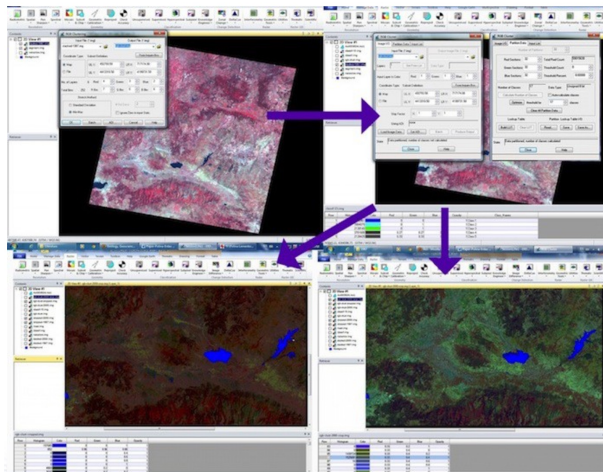
Differentiating Patterns via DNs:

- ▶ Image classification consists in assignation of all pixels into land cover classes of the study area.
- ▶ Classification is done using multispectral data, spectral pattern (signatures) of the pixels that represent land cover classes.
- ▶ Various land cover types and landscape features are detected using individual properties of digital numbers (DNs) of the pixels.
- ▶ The DN's show values of the spectral reflectance of the land cover features, and individual properties of the objects.

Clustering: Algorithm

- ▶ Clustering was performed to classify pixels into thematic groups, or clusters.
- ▶ Number of clusters = 15, which responds to the selected land cover types in the study area.
- ▶ During clustering, each digital pixel on the image is categorized to the respecting cluster,
- ▶ Assigned cluster is the one to which the mean DN value of the given pixel is the closest.
- ▶ The process is repeated in an iterative way,
- ▶ Iteration continued until optimal values of the class groups and the pixels assigned to the corresponding classes are reached.
- ▶ Afterwards, the land cover types were visually assessed and identified for each land cover class.

Clustering: Visualization

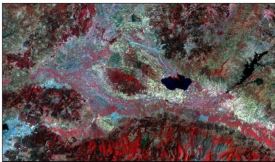


- ▶ Final thematic mapping is based on the results of the image classification:
- ▶ Visualizing landscape structure and land cover in the study area.
- ▶ Final thematic maps are represented on the following two slides.

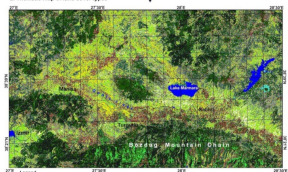
Maps of 1987 and 2000

LAND COVER TYPES IN PROVINCES MANISA AND IZMIR, WESTERN TURKEY.
Supervised classification applied to Landsat TM image, 2000.

1. Landsat TM initial image



2. Thematic map of land cover types

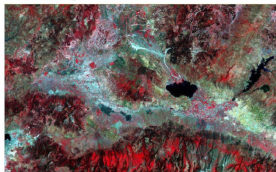


Classification		Area (km ²)		Percentage (%)	
Class	Code	Area	Percentage	Area	Percentage
Water	1	10.5	0.1	10.5	0.1
Barren	2	10.5	0.1	10.5	0.1
Forest	3	10.5	0.1	10.5	0.1
Shrubland	4	10.5	0.1	10.5	0.1
Grassland	5	10.5	0.1	10.5	0.1
Cropland	6	10.5	0.1	10.5	0.1
Urban	7	10.5	0.1	10.5	0.1
Wetland	8	10.5	0.1	10.5	0.1
Open water	9	10.5	0.1	10.5	0.1
Barren	10	10.5	0.1	10.5	0.1
Forest	11	10.5	0.1	10.5	0.1
Shrubland	12	10.5	0.1	10.5	0.1
Grassland	13	10.5	0.1	10.5	0.1
Cropland	14	10.5	0.1	10.5	0.1
Urban	15	10.5	0.1	10.5	0.1
Wetland	16	10.5	0.1	10.5	0.1
Open water	17	10.5	0.1	10.5	0.1
Barren	18	10.5	0.1	10.5	0.1
Forest	19	10.5	0.1	10.5	0.1
Shrubland	20	10.5	0.1	10.5	0.1
Grassland	21	10.5	0.1	10.5	0.1
Cropland	22	10.5	0.1	10.5	0.1
Urban	23	10.5	0.1	10.5	0.1
Wetland	24	10.5	0.1	10.5	0.1
Open water	25	10.5	0.1	10.5	0.1
Barren	26	10.5	0.1	10.5	0.1
Forest	27	10.5	0.1	10.5	0.1
Shrubland	28	10.5	0.1	10.5	0.1
Grassland	29	10.5	0.1	10.5	0.1
Cropland	30	10.5	0.1	10.5	0.1
Urban	31	10.5	0.1	10.5	0.1
Wetland	32	10.5	0.1	10.5	0.1
Open water	33	10.5	0.1	10.5	0.1
Barren	34	10.5	0.1	10.5	0.1
Forest	35	10.5	0.1	10.5	0.1
Shrubland	36	10.5	0.1	10.5	0.1
Grassland	37	10.5	0.1	10.5	0.1
Cropland	38	10.5	0.1	10.5	0.1
Urban	39	10.5	0.1	10.5	0.1
Wetland	40	10.5	0.1	10.5	0.1
Open water	41	10.5	0.1	10.5	0.1
Barren	42	10.5	0.1	10.5	0.1
Forest	43	10.5	0.1	10.5	0.1
Shrubland	44	10.5	0.1	10.5	0.1
Grassland	45	10.5	0.1	10.5	0.1
Cropland	46	10.5	0.1	10.5	0.1
Urban	47	10.5	0.1	10.5	0.1
Wetland	48	10.5	0.1	10.5	0.1
Open water	49	10.5	0.1	10.5	0.1
Barren	50	10.5	0.1	10.5	0.1

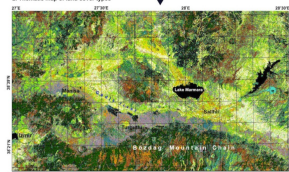
Auxiliary technical data:
Initial data: Landsat TM image acquired on 08/02/00 by EarthSat, WRS 2, Path 198, Row 022. Distributed by SICTP in GeoTIFF.
Classification type: Supervised classification, Minimum Distance method.
Land cover classes: 10 types. Area: Manisa and Izmir provinces, western Turkey.

LAND COVER TYPES IN PROVINCES MANISA AND IZMIR, WESTERN TURKEY.
Supervised classification applied to Landsat TM image, 1987.

1. Landsat TM initial image



2. Thematic map of land cover types



Classification		Area (km ²)		Percentage (%)	
Class	Code	Area	Percentage	Area	Percentage
Water	1	10.5	0.1	10.5	0.1
Barren	2	10.5	0.1	10.5	0.1
Forest	3	10.5	0.1	10.5	0.1
Shrubland	4	10.5	0.1	10.5	0.1
Grassland	5	10.5	0.1	10.5	0.1
Cropland	6	10.5	0.1	10.5	0.1
Urban	7	10.5	0.1	10.5	0.1
Wetland	8	10.5	0.1	10.5	0.1
Open water	9	10.5	0.1	10.5	0.1
Barren	10	10.5	0.1	10.5	0.1
Forest	11	10.5	0.1	10.5	0.1
Shrubland	12	10.5	0.1	10.5	0.1
Grassland	13	10.5	0.1	10.5	0.1
Cropland	14	10.5	0.1	10.5	0.1
Urban	15	10.5	0.1	10.5	0.1
Wetland	16	10.5	0.1	10.5	0.1
Open water	17	10.5	0.1	10.5	0.1
Barren	18	10.5	0.1	10.5	0.1
Forest	19	10.5	0.1	10.5	0.1
Shrubland	20	10.5	0.1	10.5	0.1
Grassland	21	10.5	0.1	10.5	0.1
Cropland	22	10.5	0.1	10.5	0.1
Urban	23	10.5	0.1	10.5	0.1
Wetland	24	10.5	0.1	10.5	0.1
Open water	25	10.5	0.1	10.5	0.1
Barren	26	10.5	0.1	10.5	0.1
Forest	27	10.5	0.1	10.5	0.1
Shrubland	28	10.5	0.1	10.5	0.1
Grassland	29	10.5	0.1	10.5	0.1
Cropland	30	10.5	0.1	10.5	0.1
Urban	31	10.5	0.1	10.5	0.1
Wetland	32	10.5	0.1	10.5	0.1
Open water	33	10.5	0.1	10.5	0.1
Barren	34	10.5	0.1	10.5	0.1
Forest	35	10.5	0.1	10.5	0.1
Shrubland	36	10.5	0.1	10.5	0.1
Grassland	37	10.5	0.1	10.5	0.1
Cropland	38	10.5	0.1	10.5	0.1
Urban	39	10.5	0.1	10.5	0.1
Wetland	40	10.5	0.1	10.5	0.1
Open water	41	10.5	0.1	10.5	0.1
Barren	42	10.5	0.1	10.5	0.1
Forest	43	10.5	0.1	10.5	0.1
Shrubland	44	10.5	0.1	10.5	0.1
Grassland	45	10.5	0.1	10.5	0.1
Cropland	46	10.5	0.1	10.5	0.1
Urban	47	10.5	0.1	10.5	0.1
Wetland	48	10.5	0.1	10.5	0.1
Open water	49	10.5	0.1	10.5	0.1
Barren	50	10.5	0.1	10.5	0.1

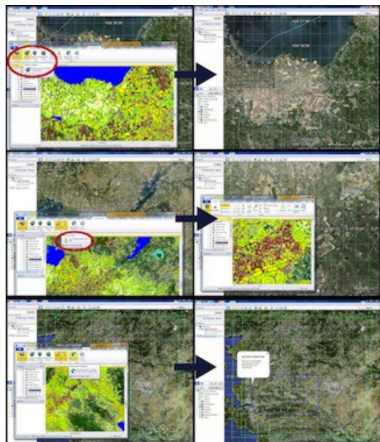
Auxiliary technical data:
Initial data: Landsat TM image acquired on 08/02/87 by EarthSat, WRS 2, Path 198, Row 022. Distributed by SICTP in GeoTIFF.
Classification type: Supervised classification, Minimum Distance method.
Land cover classes: 10 types. Area: Manisa and Izmir provinces, western Turkey.

1987

2000

Classified Landsat TM image (above) and thematic map of land cover types (below).

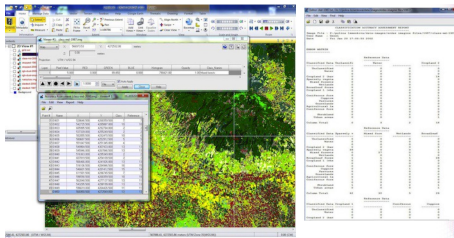
Verification via the Google Earth: Algorithm



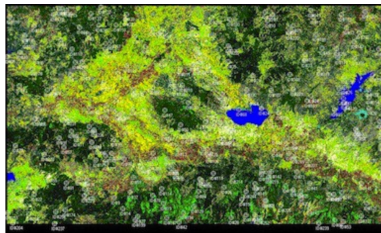
Linking Map with the Google Earth

- ▶ The selected areas with the most diverse landscape structure and high heterogeneity of the land cover types, have been verified by the overlapping of the Google Earth aerial images.
- ▶ The function “connect to Google Earth” was activated that enabled to visualize the same region of the current study on the Google Earth in a simultaneous way.
- ▶ The functions “Link Google Earth to View” and “Sync Google Earth to View” enabled to synchronize the view areas between the Google Earth and the current view on the image.
- ▶ This enabled to check the difficult study areas where questions arose in which land cover type this site belongs.

Computing Error Matrix



Left: Correction of the assigned class values of the generated points according to the real values.
Right: Error matrix generated for each land cover class, Landsat TM classification 1987.



Results validation: the quality control and validation of the results
Quality control was performed using accuracy assessment operations in Erdas Imagine menu

Final Calculations

ACCURACY TOTALS

Class Name	Reference Totals	Classified Totals	Number Correct	Producers Accuracy	Users Accuracy
Unclassified	0	0	0	---	---
Water	2	2	2	66.67%	100.00%
Cropland 2 (barley, cereals)	12	14	14	77.78%	100.00%
Sparsely vegetated areas	42	41	39	92.86%	95.12%
Mixed forests	30	27	27	90.00%	100.00%
Wetlands	5	1	1	20.00%	100.00%
Broadleaf forests	29	21	26	59.64%	82.87%
Cropland 1 (wheat)	5	5	5	55.56%	100.00%
Coniferous forests	21	23	19	90.48%	82.41%
Coppice	25	23	21	84.00%	91.30%
Pastures	21	18	18	85.71%	100.00%
Grasslands	6	2	2	33.33%	100.00%
Agricultural lands (setback, etc)	5	2	2	40.00%	100.00%
Coniferous forests (pines)	24	24	21	87.50%	91.25%
Shrubland	1	0	0	---	---
Urban areas	0	5	1	100.00%	9.57%
Totals	256	256	208		

Overall Classification Accuracy = 81.25%

----- End of Accuracy Totals -----

KAPPA (K) STATISTICS

Overall Kappa Statistics = 0.7923

Conditional Kappa for each Category.

Class Name	Kappa
Unclassified	0.0000
Water	0.0000
Cropland 2 (barley, cereals)	1.0000
Sparsely vegetated areas	0.9416
Mixed forests	1.0000
Wetlands	1.0000
Broadleaf forests	0.8181
Cropland 1 (wheat)	1.0000
Coniferous forests (firs)	0.8000
Coppice	0.8108
Pastures	0.8086
Grasslands	1.0000
Agricultural lands (setback, etc)	1.0000
Coniferous forests (pines)	0.8989
Wetlands	0.0000
Shrubland	0.0000
Urban areas	0.0000

----- End of Kappa Statistics -----

ACCURACY TOTALS

Class Name	Reference Totals	Classified Totals	Number Correct	Producers Accuracy	Users Accuracy
Unclassified	0	0	0	---	---
Grasslands	5	0	0	---	---
Urban areas	2	2	2	86.96%	80.00%
Urban areas	5	0	0	---	---
Coniferous forest	10	13	9	90.00%	69.23%
Coppice	4	3	3	75.00%	100.00%
Coniferous forest	23	19	18	78.26%	94.74%
Wetlands	3	1	0	0.00%	0.00%
Cropland 1 (wheat)	25	20	24	96.00%	80.00%
Cropland 2 (barley, cereals)	17	17	14	82.35%	82.35%
Pastures	7	6	4	57.14%	66.67%
Mixed forests	22	41	21	96.55%	78.61%
Agricultural lands	16	10	10	62.50%	100.00%
Pastures	18	19	14	77.78%	78.48%
Sparsely vegetated areas	42	46	40	95.24%	86.96%
Broadleaf forests	10	14	9	90.00%	64.29%
Shrubland	3	4	3	100.00%	75.00%
Totals	256	256	206		

Overall Classification Accuracy = 80.47%

----- End of Accuracy Totals -----

KAPPA (K) STATISTICS

Overall Kappa Statistics = 0.7544

Conditional Kappa for each Category.

Class Name	Kappa
Unclassified	0.0000
Grasslands	0.0000
Urban areas	0.8000
Coniferous forests (pines)	0.6798
Coppice	1.0000
Coniferous forests (firs)	0.9422
Wetlands	0.0119
Cropland 1 (wheat)	0.7784
Cropland 2 (barley, cereals)	0.8113
Water	0.6579
Mixed forests	0.7114
Agricultural lands (setback, etc)	1.0000
Pastures	0.7149
Sparsely vegetated areas	0.8440
Broadleaf forests	0.6289
Shrubland	0.7470

----- End of Kappa Statistics -----

Classification of Landsat TM image, 1987. Classification of Landsat TM image, 2000.

Accuracy Results: Kappa Statistics

Land Cover Class	No pixels, 1987	No of pixels, 2000	Area(ha), 1987	Area (ha), 2000
Grasslands	411879	795422	2141	4134
Urban areas	1443590	1797360	7504	9342
Coniferous forest (pines)	1253627	1711708	6516	8898
Coniferous forests (firs)	871502	921977	4530	4793
Coppice	1058062	134659	5500	700
Wetlands	51041	27721	265	144
Croplands 1 (wheat)	458425	643684	2382	3345
Croplands 2 (barley, cereals)	220975	850931	1149	4423
Mixed forests	790421	242800	4109	1262
Agricultural lands (cotton, etc)	24344	925968	127	4813
Pastures	815377	283646	4238	1474
Sparsely vegetated areas	165250	1137789	859	5914
Broadleaf forests	1716519	1098428	8923	5710
Shrubland	1260254	350603	6550	1822

Accuracy results for Landsat TM image classification are computed as follows:

- ▶ The classification of the image 1987: accuracy 81.25%, 2000: 80,47%.
- ▶ Kappa statistics for the image 2000: 0.7843, for the image 1987: 0.7923

- ▶ The results indicate changes in land cover types affected by human activities, i.e. increased agricultural areas.
- ▶ 1987: croplands (wheat) covered 71% of the today's area (2000): 2382 vs. 3345 ha.
- ▶ Increase in barley cropland areas is noticeable as well: 1149 ha in 1987 vs. 4423 ha in 2000.
- ▶ Sparsely vegetated areas now also occupy more areas : 5914 ha in 2000 against 859 ha in 1987.
- ▶ Natural vegetation, decreased, which can be explained by the expansion of the agricultural lands.
- ▶ 1987: coppice areas covered 5500 ha while later on there are only 700 ha in this land type.

Conclusions:

- ▶ Increased human activities (agricultural works, urbanization, industrialization) affect environment, cause negative impacts on the ecosystems and make changes in the vegetation coverage (land cover types).
- ▶ Climate change affect land cover types: decrease of typical woody vegetation.
- ▶ Drastic land use changes are recorded and detected in diverse regions of Turkey, including Izmir surroundings.

Résumé:

- ▶ Monitoring land cover changes is necessary for maintaining environmental sustainability.
- ▶ Updated information and spatial analysis are useful tools.
- ▶ The presentation demonstrated how landscapes changed in the selected study area at a 13-year time span (1987-2000).
- ▶ The data included Landsat imagery covering research area. The image processing was done by classification methods.
- ▶ The classification results detected changes in landscapes in 2000 comparing to 1987. This proved anthropogenic impacts on the landscapes which affect sustainable environmental development of the region.
- ▶ The results demonstrated successful combination of the RS data and methods of GIS spatial analysis, effective for monitoring of highly heterogeneous landscapes in the area of intensive anthropogenic activities.

Thank you for attention !

Acknowledgements:

Current research has been supported by the TÜBİTAK:
Türkiye Bilimsel ve Teknoloji Arastırma Kurumu
(The Scientific and Technological Research Council of Turkey)
Research Fellowship for Foreign Citizens, No. 2216 for 2012.

The research stay was done during 11-12.2012 at
Ege University, Faculty of Geography,
Izmir, Turkey.

- Alrababah M.A., & Alhamad M.N. (2006) Land use/cover classification of arid and semi-arid Mediterranean landscapes using Landsat ETM. *International Journal of Remote Sensing*, 27 (13), 2703-2718.
- Ataberk E., and Baykal F. (2011). Utilization of natural and cultural resources of Dikili (Izmir) for tourism. *Procedia Social and Behavioral Sciences* 19, 173–180.
- Baskent E.Z., Kadiogullari A.I. (2007). Spatial and temporal dynamics of land use pattern in Turkey: A case study in Inegol. *Landscape and Urban Planning* 81, 316– 327.
- Benedetti R., Rossini P. & Taddei R. (1994) Vegetation classification in the Middle Mediterranean area by satellite data. *International Journal of Remote Sensing* 15 (3).
- Burak S., Dogan E., Gazioglu, C. (2004) Impact of urbanization and tourism on coastal environment. *Ocean & Coastal Management* 47, 515–527.
- Efe, R. (2000). The impact of land use changes on natural vegetation along the coastal zone between Edremit and Kucukkuyu. In: *International Symposium on Desertification, Turkey*, Proceedings, pp. 222–227.
- Hepcan S., Hepcan C.C., Bouwma I.M., Jongman R.H.G., Özkan M.B. (2009) Ecological networks as a new approach for nature conservation in Turkey: A case study of İzmir Province. *Landscape and Urban Planning* 90, 143–154.

Bibliography

- 1 M. Klaučo, B. Gregorová, U. Stankov, V. Marković, and P. Lemenkova, "Landscape metrics as indicator for ecological significance: assessment of Sitno Natura 2000 sites, Slovakia", in *Ecology and environmental protection, Proceedings of International Conference* (2014), pp. 85–90, <http://elib.bsu.by/handle/123456789/103362>.
- 2 M. Klaučo, B. Gregorová, U. Stankov, V. Marković, and P. Lemenkova, "Determination of ecological significance based on geostatistical assessment: a case study from the Slovak Natura 2000 protected area", *Central European Journal of Geosciences* 5, 28–42, ISSN: 1896-1517 (2013), <https://www.degruyter.com/view/j/geo.2013.5.issue-1/s13533-012-0120-0/s13533-012-0120-0.xml?format=INT>.
- 3 P. Lemenkova, "Rural Sustainability and Management of Natural Resources in Tian Shan Region, Central Asia", in *Celebrating Pastoral Life, Heritage and Economic Development, Proceedings International Conference*, edited by F. Papageorgiou (2014), pp. 81–89, ISBN: 978-960-6676-22-2.
- 4 P. Lemenkova, "Opportunities for Classes of Geography in the High School: the Use of 'CORINE' Project Data, Satellite Images and IDRISI GIS for Geovisualization", in *Perspectives for the development of higher education, Proceedings of 7th International Conference*, edited by V. Pestis, A. A. Duduk, A. V. Sviridov, and S. I. Yurgel (2014), pp. 284–286, ISBN: 978-985-537-042-1, https://www.ggau.by/downloads/prints/Sbornik_72014_konferencii_perspektivy_razvitija_vysshej_shkoly.pdf.
- 5 P. Lemenkova, "Monitoring changes in agricultural landscapes of Central Europe, Hungary: application of ILWIS GIS for image processing", in *Geoinformatics: theoretical and applied aspects, Proceedings of 12th International Conference* (2013).
- 6 P. Lemenkova, "Geospatial Technology for Land Cover Analysis", *Middle East and Africa (MEA) Geospatial Digest* (2013), <https://www.geospatialworld.net/article/geospatial-technology-for-land-cover-analysis/>, e-magazine (periodical).
- 7 P. Lemenkova, "Impacts of Climate Change on Landscapes in Central Europe, Hungary", in *Current Problems of Ecology, Ecological monitoring and management of natural protection, Proceedings of 8th International Conference*, Vol. 2 (2012), pp. 134–136, <https://elib.grsu.by/katalog/173327-393652.pdf>.

- ⁸ P. Lemenkova, "Water Supply and Usage in Central Asia, Tian Shan Basin", in *Civil eng., architecture & environmental protection*, Phidac-2012, Proceedings of the 4th International Symposium for Doctoral studies in the Fields of Civil Engineering, Architecture & Environmental Protection, edited by Z. Grdic and G. Toplicic-Curcic (Sept. 2012), pp. 331–338, ISBN: 978-86-88601-05-4.
- ⁹ P. Lemenkova, "Seagrass Mapping and Monitoring Along the Coasts of Crete, Greece", M.Sc. Thesis (University of Twente, Faculty of Earth Observation and Geoinformation (ITC), Enschede, Netherlands, Mar. 8, 2011), 158 pp., <https://thesiscommons.org/p4h9v>.
- ¹⁰ P. Lemenkova, "Using ArcGIS in Teaching Geosciences", Russian, B.Sc. Thesis (Lomonosov Moscow State University, Faculty of Educational Studies, Moscow, Russia, June 5, 2007), 58 pp., <https://thesiscommons.org/nmjgz>.
- ¹¹ P. Lemenkova, "Geocological Mapping of the Barents and Pechora Seas", Russian, B.Sc. Thesis (Lomonosov Moscow State University, Faculty of Geography, Department of Cartography and Geoinformatics, Moscow, Russia, May 18, 2004), 78 pp., <https://thesiscommons.org/bvwcr>.
- ¹² P. Lemenkova, *Ecological and Geographical Mapping of the Baltic Sea Region in the Gulf of Finland*, Russian, Moscow, Russia: Lomonosov Moscow State University, Mar. 30, 2002, <https://zenodo.org/record/2574447>, Term Paper.
- ¹³ P. Lemenkova and I. Elek, "Clustering Algorithm in ILWIS GIS for Classification of Landsat TM Scenes: a Case Study of Mecsek Hills Region, Hungary", in *Geosciences and environment, Near-surface geophysics, Proceedings 3rd International Conference*, edited by S. Komatina-Petrovic (2012).
- ¹⁴ P. Lemenkova, B. Forbes, and T. Kumpula, "Mapping Land Cover Changes Using Landsat TM: A Case Study of Yamal Ecosystems, Arctic Russia", in *Geoinformatics: theoretical and applied aspects, Proceedings of the 11th International Conference (2012)*, <https://elibrary.ru/item.asp?id=24527736>.
- ¹⁵ H. W. Schenke and P. Lemenkova, "Zur Frage der Meeresboden-Kartographie: Die Nutzung von AutoTrace Digitizer für die Vektorisierung der Bathymetrischen Daten in der Petschora-See", German, *Hydrographische Nachrichten* **25**, 16–21, ISSN: 0934-7747 (2008).
- ¹⁶ I. Suetova, L. Ushakova, and P. Lemenkova, "Geocological Mapping of the Barents Sea Using GIS", in *Digital cartography & gis for sustainable development of territories, Proceedings of the International Cartographic Conference (2005)*, <https://icaci.org/icc2005/>.
- ¹⁷ I. Suetova, L. Ushakova, and P. Lemenkova, "Geoinformation mapping of the Barents and Pechora Seas", *Geography and Natural Resources* **4**, edited by V. A. Snytko, 138–142, ISSN: 1875-3728 (2005), http://www.izdatgeo.ru/journal.php?action=output&id=3&lang_num=2&id_dop=68.