



HAL
open science

Wheat biological responses to stress caused by cadmium, nickel and lead

Samar R. Saleh, Marwa Masoud Kandeel, Doaa Ghareeb, Tayssir M. Ghoneim, Nasser I. Talha, Badr Alaoui-Sossé, Lotfi Aleya, Mohamed M. Abdel-Daim

► To cite this version:

Samar R. Saleh, Marwa Masoud Kandeel, Doaa Ghareeb, Tayssir M. Ghoneim, Nasser I. Talha, et al.. Wheat biological responses to stress caused by cadmium, nickel and lead. *Science of the Total Environment*, 2020, 706, 10 p. 10.1016/j.scitotenv.2019.136013 . hal-02420225

HAL Id: hal-02420225

<https://hal.science/hal-02420225>

Submitted on 7 Mar 2022

HAL is a multi-disciplinary open access archive for the deposit and dissemination of scientific research documents, whether they are published or not. The documents may come from teaching and research institutions in France or abroad, or from public or private research centers.

L'archive ouverte pluridisciplinaire **HAL**, est destinée au dépôt et à la diffusion de documents scientifiques de niveau recherche, publiés ou non, émanant des établissements d'enseignement et de recherche français ou étrangers, des laboratoires publics ou privés.



Distributed under a Creative Commons Attribution - NonCommercial 4.0 International License

1 **Wheat Biological Responses to Stress Caused by Cadmium, Nickel and Lead**

2 Samar R. Saleh^{1, 2, 3*}, Marwa Masoud Kandeel⁴, Doaa Ghareeb^{1, 2, 3}, Tayssir M. Ghoneim²,

3 Nasser I. Talha⁴, Badr Alaoui-Sossé⁵, Lotfi Aleya⁵, Mohamed M. Abdel-Daim^{6, 7}

4 ¹ Biological screening and preclinical trial laboratory, Department of Biochemistry, Faculty
5 of Science, Alexandria University, Alexandria, Egypt.

6 ² Department of Biochemistry, Faculty of Science, Alexandria University, Alexandria, Egypt.

7 ³Pharmaceutical and Fermentation Industries Development Centre, City for Scientific
8 Research and Technology Applications, Alexandria, Egypt.

9 ⁴ Soil, Water and Environment Research Institute, Agricultural research center, Giza, Egypt.

10 ⁵Chrono-Environnement Laboratory, UMR CNRS 6249, Bourgogne Franche-Comté
11 University, F-25030, Besançon Cedex, France.

12 ⁶Department of Zoology, College of Science, King Saud University, P.O. Box 2455, Riyadh
13 11451, Saudi Arabia.

14 ⁷Pharmacology Department, Faculty of Veterinary Medicine, Suez Canal University, Ismailia
15 41522, Egypt

16

17 **Pr. Lotfi Aleya : Corresponding author: lotfi.aleya@univ-fcomte.fr**

18

19 Abstract

20 Several stressors like different types of heavy metals are found in the soil and can affect the
21 growth and genomic integrity of wheat grains (*Triticum aestivum* L.). The aim of this study
22 was to compare the effect of exogenous Cd (30, 60, 120 mg/kg), Ni (50, 100 and 150 mg/kg)
23 or Pb (100, 200 and 300 mg/kg) on wheat agronomic characteristics through the assessment
24 of oxidative stress indices at protein and gene expression levels, photosynthetic pigments and
25 genetic aberrations using RAPD analysis that were studied during two winter seasons
26 (2015/2016 and 2016/2017). The results showed that all stressors significantly decreased the
27 vegetative growth parameters, altered the activities of antioxidants enzymes in seedlings
28 (after 30 days) and grains (after 5 months) and differently affected their expression levels in
29 seedlings leaves and roots. Pb treated plants showed the poorest agronomic characteristics as
30 it exhibited the worst affected wheat height, number of tillers, fresh and dry weight, flag leaf
31 area as well as yield. Pb treatment caused poorest plant performance, it showed the highest
32 proline content, least protein and chlorophyll contents, thus affects the overall plants growth
33 followed by Cd and Ni, respectively. Furthermore, high Pb and Cd doses revealed highest
34 degree of polymorphism and lowest degree of genome stability. Altogether, heavy metals
35 accumulated mainly in wheat straw and induced genotoxic effect which consequently altered
36 normal plant metabolism and pigment content which resulted in a significant reduction in
37 wheat yield and quality. Moreover, Pb induced more genotoxic and phytotoxic effects than
38 Cd and Ni.

39

40 **Keywords:** Cadmium; Nickel; Lead; Antioxidants; vegetative growth parameters; RAPD

41 **1. Introduction**

42 Pollution concerns the deterioration of chemical, physical and biological properties of the
43 surrounding environment air, water and soil (Ahmad et al., 2015b). Heavy metal pollution is
44 one of the most global environmental problems worldwide facing humanity. Unlike organic
45 pollutants that can be easily degraded to harmless small molecules, heavy metals belong to a
46 group of immutable, non-biodegradable, inorganic chemical constituents and their total
47 concentration in soils persists for a long time after their introduction (Wuana & Okieimen,
48 2011; Malar et al., 2014). Despite heavy metals are natural constituents of soils in trace
49 amount, they become toxic to soil as they decrease soil fertilization which consequently cause
50 plant cellular damage when their quantity exceeds the normal limit (Al Naggar et al., 2014;
51 Placek et al., 2016; Jalmi et al., 2018). Moreover, this adverse effect has been extended to
52 human populations via food chain (Xie et al., 2016).

53 Among heavy metal ions, cadmium (Cd), nickel (Ni) and lead (Pb) contaminants are an
54 emerging problem all over the world due to anthropogenic, technogenic and geogenic
55 activities (Wuana & Okieimen, 2011; Rizwan et al., 2016). In agricultural soils, naturally Cd
56 concentration ranged from 0.01 to 0.7 mg kg⁻¹ soil (Szolnoki et al., 2013), while the mean
57 content of Pb is 50 mg kg⁻¹ soil (Nagajyoti et al., 2010) and Ni concentration, with respect to
58 the World Health Organization (WHO), is 15-30 mg kg⁻¹soil (Kabata-Pendias & Pendias,
59 2001).

60 Nickel (Ni) is an essential micronutrient for plant growth and development; it has high
61 biological activity as an integral component of various biomolecules (including
62 metalloenzymes). However, it becomes toxic at high concentration (Sirhindi et al., 2016). In
63 contrast, Cd and Pb are non-essential elements and at very low concentration they can cause
64 morphological, physiological, and biochemical dysfunctions in plants (Shu et al., 2012; Meng
65 et al., 2017).

66 Wheat (*Triticum aestivum* L.) is the most domesticated-cultivated-food crop and it is
67 considered the most important human food grain source. As other plants, wheat is sensitive to
68 various biotic and abiotic factors like, heavy metals (Parlak, 2016; Ali et al., 2018). Heavy
69 metals have many direct and indirect damaging effects on plants growth (Jalmi et al., 2018).
70 Heavy metals induced-phytotoxicity is reported to initiate secondary oxidative stress by
71 importing the formation of harmful reactive oxygen species (ROS) or modification of the
72 antioxidant defense system as well as replacement of enzyme cofactors and transcription
73 factors, cellular redox and ionic transport imbalance, DNA damage and protein oxidation,
74 thus inhibiting growth and grain yield (Sardar et al., 2013; Shahid et al., 2014; Theophanides
75 & Anastassopoulou, 2017; Jalmi et al., 2018).

76 The present study was conducted to evaluate and compare the effect of different
77 concentrations of Cd, Ni or Pb (the concentration range for each metal was chosen between
78 the maximum allowable concentrations in soil and toxic soil concentration for plants) on
79 wheat agronomic characteristics through studying the biochemical assessments of oxidative
80 stress indices, detection of the genotoxic effect using RAPD assay and the evidence on
81 vegetative growth parameters. RAPD technique, is a reliable and sensitive PCR based
82 technique, has the potential to identify the DNA polymorphisms by detecting DNA damage
83 (e.g. DNA adducts, DNA breakage) and mutations in plants (Jhang & Shasany, 2012;
84 Gjorgieva et al., 2013). Differences in RAPD profiles between untreated and treated samples
85 would be acted as a marker and elucidate the potential genotoxic effects of environmental
86 hazardous (Atienzar & Jha, 2006; Azimi et al., 2013).

87 Soil samples were collected from one of the famous farms in Egypt which is Al-Gabal Al-
88 Asfar farm (25 km north east of Cairo). Al-Gabal Al-Asfar farm was irrigated with sewage
89 water of Cairo city for more than eighty years and there are many field crops cultivated in it
90 such as wheat, tomato, potato, onion, garlic, maize, eggplant, bean, cauliflower, clover,

91 cabbage and strawberry beside pecan nuts and date palm. Total contents of Cd, Ni, Pb, iron,
92 zinc and cobalt were found to increase as time goes on in soils irrigated with sewage at El-
93 Gabal El-Asfer (Omran et al., 1988; Abdel-Sabour et al., 1996; Saber et al., 2016). Therefore,
94 El-Gabal El-Asfer farm was chosen for the present study.

95

96 **2. Materials and methods**

97 **2.1. Materials**

98 The soil sample was collected from the surface layer (0-30 cm) of Al-Gabal Al-Asfar
99 farm. Physiochemical characteristics of soil were illustrated in **Supp 1**. Wheat grains were
100 obtained from the wheat Research- Crop Research Institute, Ministry of agriculture. Metals
101 concentrations were selected according to the guideline values for metals concentrations in
102 Egyptian (Al Naggar et al., 2014; Shokr et al., 2016) and global soils (Sipos & Póka, 2002;
103 Toth et al., 2016) where the maximum allowable Cd, Ni and Pb concentrations in soil (0.3, 50
104 and 60 ppm) and toxic concentration in soil for plants (3-8, 100-150 and 100-400 ppm),
105 respectively.

106 **2.2. Growth conditions and treatments**

107 To study the effect of either Cd, Ni or Pb polluted soils on wheat agronomic characteristics,
108 two pot experiments were conducted under natural conditions at Sakha Agricultural Research
109 Station, Kafr El-Sheikh Governorate (31°5' 35.93" latitude N and 30°56' 54.33" longitude E)
110 during winter seasons of (2015/2016) and (2016/ 2017). Control soil was a pot (30 cm width
111 and 35 cm height) filled with 9 kg of soil without any treatment, while treatments were
112 prepared by using aqueous solution of either Cd (30, 60 and 120 ppm) using Cadmium sulfate
113 octahydrate ($3\text{CdSO}_4 \cdot 8\text{H}_2\text{O}$) or Ni (50, 100 and 150 ppm) using Nickel chloride (NiCl_2 ,
114 anhydrous) or Pb solution (100, 200 and 300 ppm) using Lead acetate trihydrate
115 ($\text{Pb}(\text{CH}_3\text{COO})_2 \cdot 3\text{H}_2\text{O}$) and applied to respective pots with four replicates. Seeds of wheat

116 were then uniformly sown in pots. After harvesting of wheat plants, another seed of wheat
117 was grown in the same pot without fresh treatment of heavy metals. All plants were regularly
118 irrigated and basal fertilizers (NPK) were applied in liquid forms for all pots. Nitrogen (N) as
119 urea ($91.575 \text{ mg kg}^{-1}$ dry soil) was splatted in three doses, the first active dose (20%) directly
120 at the time of sowing of wheat and the remaining dose (80%) was applied in two equal splits
121 at tillering and flower initiation stages, phosphorus (P) as calcium superphosphate (18.315
122 mg kg^{-1} dry soil) and potassium (K) as potassium sulphate ($29.304 \text{ mg kg}^{-1}$ dry soil) applied
123 at the time of sowing of wheat.

124 **2.3. Plant sampling**

125 Plant sampling and analysis are summarized in **Figure 1**. First plant samples were collected
126 **one month** after sowing (on December 14th, 2015). Roots were carefully separated from the
127 soils, washed with tap water and the whole plants (seedlings) were rinsed in distilled water.
128 Plants were separated into roots, stems and leaves. Each part was separately homogenized in
129 9 volumes phosphate buffer (0.1 M, pH 7.4), centrifuged at 3000 rpm for 10 minutes and the
130 supernatant was collected for biochemical investigation. Glutathione peroxidase (GPx) and
131 glutathione-S-transferase (GST) activities as well as proline content were estimated in whole
132 seedling. Total protein content and the expression level of superoxide dismutase (SOD), GPx
133 and catalase (CAT) were estimated in seedling roots and leaves. DNA stability was also
134 estimated in seedling roots.

135 At flowering stage (**after two months**) in the first and second seasons (on January 19th, 2016
136 and 2017), the plant pigment (chlorophyll a, chlorophyll b and total chlorophyll) and flag leaf
137 area (cm^2) were determined using the method of Quarrie and Jones (1979), where:

$$138 \text{ Leaf area} = \text{Maximum length} \times \text{Maximum width} \times 0.75.$$

139 Where 0.75 is a coefficient factor for wheat

140 At full maturity of wheat (**harvesting after five months**) in the first and second seasons (on
141 21, April, 2016 and 2017), the plants were picked out and straw and spike (grains) were
142 separated. The mean of two seasons was recorded for some agronomic traits (fresh and dry
143 weight of plant, plant height, weight and number of spikes and weight of 100 grains as well
144 as number of tillers per plant). Finally, Cd, Ni or Pb contents were estimated in straw, grains
145 and post-harvest soil samples.

146 **2.4. Biochemical and molecular analysis**

147 **The activity of GPx** was measured following the method of Paglia and Valentine (1967).
148 GPx catalyzes the oxidation of GSH by cumene hydroperoxide. GPx activity was determined
149 by subtracting the excess GSH after enzymatic reaction from the total GSH in absence of the
150 enzyme. GSH reacts with DTNB to form yellow colored chromophore which was measured
151 at 412 nm spectrophotometrically.

152 **The GST activity** was determined according to the method of Habig et al. (1974). Ten
153 microliters of p-nitrobenzyl chloride (1 mM) was added to 1.365 mL phosphate buffer (0.1
154 M, pH 6.5) and mixed well. 25 μ l of either plant supernatant (test) or phosphate buffer, pH
155 7.4 (blank) were added and incubated at 37 °C for 5 min, then 100 μ l GSH (5 mM) was added
156 to start the reaction and incubated for 20 min at room temperature. The absorbance of
157 samples was read against blank at 310 nm using UV spectrophotometer.

158 **Proline content** was estimated by using the method given by Bates et al. (1973). Ninhydrin
159 can form a red product with proline at acidic pH. The plant material (100 mg) was added to 2
160 mL aqueous sulfosalicylic acid (3%), grounded and centrifuged for 5 min at room
161 temperature. The reaction mixture was prepared (100 μ L of 3% sulfosalicylic acid, 200 μ L
162 glacial acetic acid and 200 μ L acidic ninhydrin) and 100 μ L of the plant extract supernatant
163 was added, mixed well, incubated at 96 °C for 60 min and the reaction was terminated on ice.
164 The samples were extracted with 1 mL toluene then vortexed for 20 s, and left for 5 min to

165 allow the separation of the organic and water phases. The chromophore containing toluene
166 was removed and the absorbance was measured at 520 nm using toluene as a reference. The
167 proline concentration can be determined using a standard curve of L-Proline (20-100 µg/ml)
168 and calculated on fresh weight basis and expressed as micromole per gram FW (µmol/g FW).
169 **The total protein level** was measured using the method of Gornall et al. (1949) that depends on
170 the formation of colored complex when protein reacts with cupric ions in alkaline medium
171 and the absorbance of samples were recorded at 546 nm.

172 **Reverse transcriptase Polymerase chain reaction**

173 The total RNA was isolated from different plant parts (leaves and roots) using Easy-RED™
174 solution. One microgram of isolated RNA was reverse transcribed into complementary DNA
175 (cDNA) using reverse transcriptase (Maxime RT PreMix kit, iNtRON Biotechnology,
176 Korea). The resulting cDNA was used as templates for subsequent PCR amplification using
177 specific primers for SOD, GPx, CAT and G3PDH as internal control using PCR thermal
178 cyclers (ESCO, Swift MiniPro Thermal Cycler, USA). Primer sequences and PCR conditions
179 were summarized in **Supp 2**. Semi-quantitative PCR analysis was performed using 2X PCR
180 Master mix (i-Taq™) with standard buffer (iNtRON Biotechnology, Korea). The PCR
181 product was resolved on 1.5% Agarose electrophoresis and stained with ethidium bromide.
182 DNA bands were revealed by UV light and the band intensity was analyzed using UVitec
183 software. The expression levels were determined by calculating the relative density of each
184 SOD, GPx and CAT band to GAPDH.

185 **DNA extraction and RAPD procedures**

186 Total genomic DNA was extracted from root tips of seedlings (100 mg) by chloroform-
187 phenol method. Chloroform-phenol mixture was used to precipitate proteins while DNA is
188 precipitated by ethanol and dissolved in Tris-EDTA buffer. The PCR amplification was
189 carried out with ten primers (10- base pair each, Biolegio, Korea, **Supp 3**) and genomic DNA

190 as a template. PCR was performed in a reaction mixture of 25 µl containing approximately 1
 191 µl primer, 1 µl template DNA, 12.5 µl master mix and 10.5 µl nuclease free water. After PCR
 192 cycle, 10 µl of PCR product was resolved on 1% Agarose electrophoresis at 80 mA for 20
 193 minutes. DNA bands were revealed by UV light. DNA polymorphism represented in RAPD
 194 profile included the change in number of bands, presence or absence of bands compared with
 195 the control profile. Polymorphism was calculated according to Gjorgieva et al. (2013) as
 196 following:

$$197 \quad P (\%) = [(a+ d)/c]* 100$$

198 Where, a is the number of new bands detected in samples, d is the number of disappeared
 199 bands and c is the total number of bands in control. In addition, genomic template stability
 200 (GTS, %) was calculated as following:

$$201 \quad GTS (\%) = (1 - p / n) \times 100$$

202 Where, p is the total number of RAPD polymorphic bands detected in each metal treated
 203 sample and n the number of total bands in the control (Gjorgieva et al., 2013; Mohamed et
 204 al., 2017).

205 **Chlorophyll a, b and total chlorophyll contents** were determined as described by Moran
 206 (1982). One cm² of fresh flag leaf of plant was taken and placed into tubes containing 5 mL
 207 of N,N-dimethylformamide. The tubes were kept at 25 °C in darkness for 24 h and shaken 15
 208 s every 12 h. Samples were filtered and immediately measured for light absorption at 664
 209 (Abs₆₆₄) and 647 (Abs₆₄₇) nm using spectrophotometer. Chlorophyll contents (mg/cm²) were
 210 calculated based on the equations:

$$211 \quad \text{Chlorophyll a} = (12.64 \times \text{Abs}_{664}) - (2.99 \times \text{Abs}_{647})$$

$$212 \quad \text{Chlorophyll b} = (23.26 \times \text{Abs}_{647}) - (5.6 \times \text{Abs}_{664})$$

$$213 \quad \text{Total Chlorophyll} = (7.04 \times \text{Abs}_{664}) + (20.27 \times \text{Abs}_{647})$$

214 **Heavy Metals content**

215 Heavy metals (Cd, Ni or Pb) contents in wheat plants and post-harvesting soils were
216 measured as suggested by Chapman and Pratt (1961) and Lindsay and Norvell (1978),
217 respectively. For the mature-grown, straw and grains from each concentration were separated,
218 dried in oven at 72 °C for 48 hours and powdered. 0.5 g dry powder (straw or grains) was
219 added to 8 ml concentrated H₂SO₄ and left to next day. The mixture was heated and the
220 temperature was raised gradually to 370 °C. When sample color changed to pale brown,
221 sample cold, 0.5-1 ml of 70 % perchloric acid was added and the mixture was further boiled
222 until the release of dense white fumes. After cooling, 20 ml distilled water was added and
223 heated until a clear solution was obtained. At room temperature, the mixture was filtered and
224 transferred quantitatively to a 50 ml volumetric flask by adding double-distilled water. While,
225 the soil sample (20g) were mixed with 40 ml diethylenetriaminepentaacetic acid (DTPA) and
226 secured upright on shaker for 2 hours. Then the suspensions were filtered. The obtained
227 samples' solutions were analyzed through atomic absorption spectrophotometer, PERKIN
228 ELMER 3300.

229 **2.5. Statistical analysis**

230 Data were analyzed using IBM SPSS software package version 20.0. The Kolmogorov-
231 Smirnov test was used to verify the normality of distribution. Quantitative data was described
232 as mean \pm standard deviation (mean \pm SD). Data were analyzed by using one-way ANOVA
233 to compare between more than two groups and Post Hoc test (Tukey) for pairwise
234 comparisons. Significance of the obtained results was judged at the 5% level. The marked
235 changes observed in RAPD profiles (disappearance and/or appearance of bands compared
236 with control) were evaluated (Gjorgieva et al., 2013).

237 **3.Results**

238 **3.1Activities and relative gene expression of antioxidant enzymes**

239 **After 30 days**, most Cd, Ni or Pb contaminated soils significantly elevated **GPx and GST**
240 **activities** in seedlings compared to control (**Table 1**). A non-significant elevation in GPx
241 activity was observed at Cd 60, 120 ppm and Pb at 300 ppm and in GST activity at Cd 120
242 ppm and Ni 100 ppm. While, lowest Ni concentration (50 ppm) showed a significant
243 suppression in GST activity compared to control.

244 In addition, the expression level of GPx was significantly up-regulated in seedlings leaves at
245 different treatments except Pb at 200 ppm compared to control. While seedlings roots were
246 diversely affected by metals contamination where Cd (30 and 60 ppm) showed non-
247 significant increase and Ni (150 ppm) showed a significant up-regulation and other metals
248 showed a significant reduction in GPx expression level compared to control (**Supp 4 and**
249 **Table 2**). Cd, Ni or Pb stressed soils were significantly up-regulated the expression level of
250 CAT in seedlings leaves and roots except Cd significantly down-regulated CAT expression
251 level in seedlings roots compared to control. This down regulation was peaked at lower Cd
252 concentration and declined at higher Cd concentration. The expression level of SOD was
253 significantly down-regulated in both seedlings leaves and roots compared to control.
254 Moreover, 200 and 300 ppm Pb treatment resulted in maximum down-regulation of SOD
255 expression about 52 and 58 %, respectively.

256 After 5 months, GST activity in grains showed a non- significant change compared to control
257 except Cd 30 ppm showed a significant elevation. In addition, Cd 60 ppm, Ni 50 ppm and Pb
258 100, 200 and 300 ppm showed a non- significant elevation in grain GPx activity.

259 Notably, in seedlings and grains the activities of GPx and GST were maximum at lower Cd
260 concentration followed by a decline at higher Cd concentrations compared to control (**Table**
261 **1**). GPx and GST activities of seedlings increased about 61.9 and 76.9 %, while this increase
262 was around 16.6 and 14.6 % for grains at 30 ppm Pb compared to the control. GPx activity
263 was lower in grains than that in seedlings and vice versa in GST.

264 **3.2 Proline and total protein contents in seedling parts**

265 Proline content was significantly increased in either Cd, Ni or Pb- stressed wheat plants
266 (**Table 3**). It was found to increase in a dose dependent manner, showing highest elevation at
267 Pd 300 ppm (about 363%).

268 Total protein content was significantly elevated in roots and leaves after both Cd and Ni
269 treatments than corresponding untreated control parts, except Cd at 120 ppm showed a non-
270 significant decrease by only 3% in roots (**Table 3**). On the other hand, in Pb stressed plants
271 the total protein content was significantly decreased in roots while it was significantly
272 elevated in leaves except 100 ppm showed a non-significant change.

273 **3.3 Chlorophyll content and flag leaf area**

274 Cd, Ni and Pb treatments adversely affected the plant pigment system. A significant decline
275 in chlorophyll a, chlorophyll b, total chlorophyll and flag leaf area was observed in metal-
276 stressed plants and the magnitude of decline was in a dose dependent manner (**Table 3**). The
277 concentration of chlorophyll a was found to be higher than chlorophyll b in plant leaves. Pd
278 treatment especially at 300 ppm showed the highest decrease in chlorophyll a, chlorophyll b
279 and total chlorophyll by about 36 % and flag leaf area was decreased by about 46%.

280 **3.4 Vegetative growth parameters**

281 After 5 months, Cd, Ni and Pb ions had negatively impacted the plant growth parameters.
282 This inhibition was in a dose dependent manner and the highest metals concentration
283 produced the shortest plant and the least number of tillers/plant compared to control (**Table**
284 **4**). A significant reduction in wheat height by 21.67, 16.11, 21.11 % and the number of
285 tillers/plant by about 29 % was observed in Cd (120 ppm), Ni (150 ppm) and Pb (300 ppm)
286 stressed soils, respectively. In addition, fresh and dry weight of wheat were clearly affected
287 by Cd, Ni and Pb treatments, reaching lowest values at 300 ppm Pb, 150 ppm Ni and 120
288 ppm Cd, respectively. Moreover, spike weight, number of spikes/pot and weight of 100

289 grains were remarkably reduced by applying different concentrations of Cd, Ni and Pb
290 (**Table 4**). Interestingly, the highest Pb concentration (300 ppm) showed the maximum
291 inhibitory effect on plant growth parameters. On the contrary, Ni 50 ppm resulted in no
292 statistically change in wheat height, dry weight, spike weight and number of spikes/ pot
293 compared to control.

294 **3.5DNA polymorphism profile**

295 RAPD profiles generated following the metal exposure were altered and different from those
296 of control DNA as indicated in **Figure 2** and **Table 5**. Generally, in this study, heavy metals
297 treatment leads to normal fragment pattern disappearance as the total number of disappeared
298 fragments was higher than the number of appeared bands. A variation in band intensities in
299 comparison with control profiles was also observed. The maximum change in RAPD profiles
300 was obtained at 120 ppm Cd and 300 ppm Pb concentrations (P= 100 % and GTS= 0 %), as
301 compared with control profile. The percentages of polymorphism are in the range of 73.1-
302 100% and the values of GTS ranged from 26.9% to zero %. Samples treated with Cd, showed
303 an increase in the percentages of polymorphism and a decrease in GTS with increasing the
304 concentration, although the pattern of Ni and Pb induced genotoxicity did not follow the
305 concentration gradient.

306 **3.6Heavy metals content in wheat straw and grains as well as in post-harvest soils** 307 **(after 5 months)**

308 In the present study, heavy metals (Cd, Ni and Pb) accumulation in different wheat parts
309 (straw and grains) was directly proportional with metals concentrations in soil (**Table 6**).
310 Metals were strongly accumulated in straw more than in grains. The highest Cd concentration
311 (120 ppm) showed the maximum accumulation in straw and grains by about 14 and 16 fold,
312 respectively than control (P<0.05). As well as, Ni (150 ppm) and Pb (300 ppm) treated soils

313 were found to increase Ni and Pb accumulation in straw and grains by lower levels than Cd
314 compared to control.

315 The chemical analysis of Cd, Ni and Pb treated-soils indicated that the use of different
316 quantities of heavy metals significantly increased its availability to 27.2, 4.08, 1.44 fold in
317 first season and 12.5, 7.1, 1.56 fold in second season, respectively, compared to control
318 (**Table 6**).

319 **4.Discussion**

320 Detecting and evaluating biological changes that result from chemical contamination are
321 essential steps to determine the significance of such contamination (Stegemann et al., 2018).
322 High concentration of heavy metals becomes toxic to biota and humans and significantly reduces
323 plant production. The present study revealed a significant decrease in vegetative growth
324 parameters by Cd, Ni or Pb toxicity. Moreover, Pb treated plants showed the poorest growth as
325 indicated by the highest reduction in wheat height, number of tillers, fresh and dry weight, flag
326 leaf area as well as yield components. Pb intoxication also resulted in the highest proline content,
327 least protein and chlorophyll contents, thus affected the overall plants growth followed by Cd
328 and Ni, respectively. Furthermore, high Pb and Cd doses revealed highest degree of
329 polymorphism and lowest degree of genome stability.

330 Heavy metals induce irreparable physiological and biochemical dysfunctions in plants by
331 inducing the rapid generation of ROS and may cause oxidative stress and cell death (Shu et al.,
332 2012; Shahid et al., 2014; Jalmi et al., 2018). In 2015, studies reported that the non-enzymatic
333 and enzymatic antioxidants like SOD, peroxidase (POD), ascorbate peroxidase (APX) and CAT
334 showed up or down regulation to cope and repair the damage and this confer the stress tolerance
335 of plants (Ahmad et al., 2015a; Sofu et al., 2015).

336 Shahabivand et al. (2016) reported that Cd toxicity significantly altered the activities and the
337 transcription levels of CAT (decreased), APX and GST (increased) in leaf samples. Also Aydin
338 et al. (2016), illustrated that the gene expression pattern of CAT under different Cd
339 concentrations revealed a positive correlation, and there is no correlation found between the
340 mRNA level and CAT enzyme activity in tomato leaves. Shu et al. (2012) stated that Pb
341 treatment had a stimulating effect on SOD activity at low concentration and an inhibitory effect

342 at higher concentration in cuttings while in seedlings SOD activity was increased by increasing
343 Pb concentration. In addition, 2 mM Ni solution, increased the expression levels of Fe-SOD,
344 CAT, POD, and APX in soybean seedlings than the control levels (Sirhindi et al., 2016).

345 In the present study, the activities of GPx and GST in wheat seedlings (after 30 days) and grains
346 (after 5 months) were increased by Cd, Ni or Pb- stress in an irregular manner not concentration
347 dependent. Interestingly, the highest Cd (120 ppm), Pb (300 ppm) and Ni (150 ppm)
348 concentrations showed the lowest GPx activities in seedlings while it altered in grains. Li et al.
349 (2012) reported that GPx may be considered as an intrinsic defense against Pb-induced oxidative
350 damage in perennial ryegrass and he also stated that the antioxidant enzymes (including; GPx,
351 SOD, CAT and POD) responded to Pb exposure at an early stage. Genes encoding SOD and GPx
352 were upregulated within a few hours after Pb treatment and after 24 or 48 h, their expression
353 levels were returned to the levels of control or below and after 7 d the SOD activity was below
354 that in untreated control (Li et al., 2012). Liu et al. (2009) also reported that the SOD gene
355 expression was substantially increased within 3 h of Pb treatment and then gradually declined to
356 a stable level in *A. thaliana* seedlings. In agreement with these findings, the activities of GPx and
357 GST after 30 days (in wheat seedlings) more than that after 5 months (in grains). Therefore, the
358 antioxidant enzymes might be responsible for the early stage defense to heavy metals- induced
359 oxidative stress and may play an important role in eliminating the metals toxicity.

360 Furthermore, the expression level of GPx in leaves was significantly up-regulated (except in Pb
361 at 200 ppm) after heavy metals stress, while in roots Cd (30 and 60 ppm) showed non-significant
362 changes, Ni (150 ppm) showed a significantly up-regulation and other metals showed a
363 significant reduction in GPx expression level. Cd, Ni or Pb stressed soils were significantly up-
364 regulated the expression level of CAT in seedlings leaves and roots (except Cd treatments in

365 roots). A protective mechanism was suggested by the increased expression of specific genes
366 encoding antioxidant enzymes (Baek & Skinner, 2003). On the other hand, the expression level
367 of SOD was significantly down-regulated in both seedlings leaves and roots. This indicates the
368 consumption of antioxidant enzymes to protect the membrane stability and to scavenge oxidative
369 damage (O_2^- and H_2O_2 production) induced by heavy metals (Shahabivand et al., 2016; Sirhindi
370 et al., 2016). The altered enzymatic levels indicate the tolerance of wheat plants against heavy
371 metals stress.

372 In this study, total protein content was progressively increased in leaves stressed by Cd, Ni or Pb
373 and in roots stressed by Cd (30, 60 ppm) and Ni, while it was decreased in roots stressed by Cd
374 (120 ppm) and Pb. The increase in total protein may be due to the induction of stress proteins
375 that mainly involved in detoxification, antioxidant processes and the activation of genes for
376 synthesis of specific proteins associated with stress such as some heat shock proteins that
377 maintain the membrane proteins and the plant cell structures (Shu et al., 2012; Alayat et al.,
378 2014). On the other hand, the inhibitory action of Cd (120 ppm) and Pb on roots protein content
379 may be due to metals toxicity that reduces the protein synthesis and elevates protease activity,
380 causing proteins degradation. Nevertheless, heavy metal stress generates ROS that in turn
381 damages proteins, also the binding of metals to protein-SH groups can cause deleterious effect in
382 the normal protein structure (Sirhindi et al., 2016; Natarajan et al., 2018). This decrease agrees
383 with the decrease in GPx expression level in roots concerning Cd (120 ppm) and Pb (100, 200 &
384 300 ppm) toxicity.

385 Proline is a pivotal and multifunctional amino acid, plays an essential role not just in plant
386 developmental processes (including; chlorophyll reconstruction, Krebs cycle activation and an
387 energy source) but also in reducing environmental stress (Trovato et al., 2008). Proline

388 accumulation under heavy metal stress has been reported to be a potential indicator of stress
389 tolerance (Parlak, 2016; Sirhindi et al., 2016). This accumulation may be due to the reduction of
390 its degradation as it acts as an osmoprotectant, macromolecules stabilizer, metal chelator and
391 inhibitor of lipid peroxidation as well as free radical scavenger (Ahmad et al., 2015a; Ahmad et
392 al., 2015b). In consistent with these findings, proline content shows a positive association with
393 increasing the three metals concentrations in the soil and Pb proved to be the strongest inducer
394 for proline accumulation.

395 Toxic Metal ions directly or indirectly influence DNA synthesis and the replication process
396 (Morales et al., 2016; Theophanides & Anastassopoulou, 2017). Metal ions can interact with
397 DNA through hydrogen bonding of the metal-coordinating water molecules resulting in the
398 disruption of base pair hydrogen bonding and cause changes in the structure of the DNA double
399 helix (Anastassopoulou, 2003; Theophanides & Anastassopoulou, 2017). ROS generated by
400 metal-catalyzed reactions can modify DNA bases; three base substitutions, G/ C, G/ T and C/ T,
401 can occur as a result of oxidative damage by metal (Al-Qurainy, 2009).

402 The genotoxic effect of Cd, Ni or Pb contamination was investigated in the present study through
403 the analysis of ten different RAPD primers in wheat seedlings roots. The results showed
404 obviously different RAPD amplification products in metals treated samples compared to control
405 sample. According to our results, low metals concentrations may lead to the lower level of
406 genotoxic effects of wheat seedlings than higher concentrations as indicated by higher values of
407 GTS at Cd 30 ppm, Ni 50 ppm and Pb 100, 200 ppm. In addition, the number of missing bands
408 was found more than that of newly appeared bands. These results are in agreement with the study
409 of Gjorgieva et al. (2013) however, their results showed that Ni treatment at concentrations of
410 150 and 350 ppm showed the highest number of lost bands in bean seedlings than Cd and Pb at

411 the same concentrations, but in the present study Cd 60 ppm and Pb 100, 300 showed the highest
412 number of missing bands (15 band/ 10 primers). The disappearance of normal DNA bands may
413 be resulted from DNA damage (e.g. single- and double-strand breaks, bulky adducts, modified or
414 oxidized bases) and point mutation that may be induced by heavy metals treatments (Atienzar &
415 Jha, 2006). New RAPD amplification products (extra bands) may be attributed to a change in
416 some oligonucleotide priming sites due to mutations (new annealing events), homologous
417 recombination and/or large deletions (bringing to pre-existing annealing site closer) (Atienzar et
418 al., 1999). The highest number of extra bands (12 band/ 10 primers) was observed in Cd 120
419 ppm and Ni 100 ppm treated samples suggests that this metal probably cause mutations on
420 genomic level in high doses. Cd and Pb at highest concentrations were detected for the highest
421 level of DNA damage (GTS 0% and P 100%), and for Ni, 100 ppm showed highest genotoxicity
422 (GTS 3.8% and P 96.2%) than other concentrations. There is correlation between results obtain
423 for Cd 300 ppm in the present study (highest GPx and SOD expression level, highest number of
424 missing bands in RAPD profile and lowest GTS; comparing to ether metals treated samples) with
425 a study from 2013 (Gjorgieva et al., 2013) and 2010 (Wan-Ibrahim et al., 2010) where author's
426 deduced the correlation between genotoxicity and high antioxidant level. In (2017) Meng et al.
427 provided the molecular mechanisms that investigated Cd toxicity on DNA and protein
428 metabolism at protein levels. Cd toxicity was found to inhibit DNA glycosylase, ligation
429 enzymes expressions and gap-filling, therefore, decreasing DNA repair capacity. At the protein
430 level, Cd induced the heat shock protein response, initiation of protein refolding as well as
431 degradation by ubiquitin proteasome pathway. In addition, excess Cd also induced antioxidant
432 responses (Meng et al., 2017).

433

434 In present study, chlorophyll a, b and total chlorophyll contents were drastically reduced
435 in wheat flag leaf with increasing the concentrations of externally supplied metals and Pb had the
436 least contents followed by Ni and Cd, respectively. This reduction may be occurred due to (i) the
437 disturbance in the uptake of Mg^{2+} and essential elements (such as Mn and Fe) (Parlak, 2016), (ii)
438 the inhibition of chlorophyll biosynthesis due to the interaction of heavy metals with –SH group
439 of enzymes involved in that process (Shu et al., 2012) and (iii) the increase in chlorophyllase (the
440 first enzyme of the chlorophyll catabolic pathway) activity, which resulted in chlorophyll
441 degradation (Liu et al., 2008). The reduction in chlorophyll content and consequent inhibition of
442 photosynthesis are indicating symptoms of metals toxicity and generally reduce plants growth
443 (Ci et al., 2010; Deswal & Laura, 2018; Marzilli et al., 2018). In this study, Cd, Ni or Pb at
444 different concentrations showed a significant reduction in wheat height, number of tillers, fresh
445 and dry weight, flag leaf area as well as yield components (weight and number of spikes and
446 weight of 100 grains) and the highest reduction was observed in Pb, these results are consistent
447 with who reported that metal stress created disorders in metabolic system of plants and quickly
448 inhibited the cell division and cell elongation process leading to reduction of leaf blade area, leaf
449 density and plant stem growth with accompanying decrease in numbers of flowers and fruits as
450 well as shoot and root growth.

451 In the present study Cd, Ni and Pb were accumulated more in straw (leaves+ stem) than
452 grains of wheat. Note also, the content of metal in straw and grains was increased in a dose
453 dependent manner corresponding to metal concentration in the soil and Cd showed the highest
454 accumulation in straw and grains. These results corroborate with the findings of Dang et al.
455 (1990); Jafarnejadi et al. (2011) and Ali et al. (2018) who reported that metal uptake by grains
456 was directly related to the applied heavy metal in the soil and accumulation of metal in plants

457 differed greatly among organs or tissues and was found to follow soil > root > shoot > grain.
458 Moreover, the DTPA extractable elements (Cd, Ni or Pb) from soil were increased with
459 increasing levels of applied elements. In addition, the metals levels were found to be higher than
460 the maximum allowable limits for Cd (0.3 ppm), Ni (50 ppm) and Pb (60 ppm) in soils (Al
461 Naggar et al., 2014; Shokr et al., 2016; Toth et al., 2016). Sardar et al. (2013) and Placek et al.
462 (2016) reported that removal of heavy metals through leaching or uptake by the plants is much
463 lower than the rate of their entry into the soil, leading to gradual accumulation of elements in the
464 soil. The studies of Dang et al. (1990) and Deswal and Laura (2018) deduced that the
465 phytotoxicities and metals accumulation in soil were found to be in the order: $Cd^{2+} > Ni^{2+} > Pb^{2+}$
466 in different crop species by using the same concentrations of heavy metals. In the present study,
467 similar trend was observed for metals accumulation in soil, however, the phytotoxicities was
468 found to be in the order: $Pb^{2+} > Cd^{2+} > Ni^{2+}$ where metals concentrations were selected according
469 to guideline values for metals in soils.

470

471 **Conclusions**

472 The studied heavy metals (i.e. Cd, Ni and Pb) have a negative impact on plant growth and
473 development. They are readily taken up and accumulated in plant parts causing proportionate
474 changes in the biochemical responses (concerning the contents of protein, proline, chlorophyll,
475 antioxidant system and DNA stability), reduction in vegetative growth parameters (concentration
476 dependent) and finally led to a significant reduction in wheat yield and quality. The changes
477 occurred in RAPD profiles, can be successfully used as a sensitive marker for detecting metal
478 induced DNA damage and showed the potential as a reliable assay for genotoxicity. Finally, we
479 concluded the importance of increasing the public awareness of the threat of heavy metals

480 pollution and also keep the soil, water and fertilizers away from heavy metals contamination,
 481 especially cadmium, nickel and lead.

482 **Conflicts of Interest:** All authors declare no conflicts of interest

483 **Acknowledgement:** This work was funded by Researchers Supporting Project number (RSP-
 484 2019/121), King Saud University, Riyadh, Saudi Arabia.

485

486 **References:**

- 487 Abdel-Sabour, M. F., Ismail, A. S., & Abou Naga, H. (1996). Environmental impact of Cairo
 488 sewage effluent on El-Gabal El-Asfer farm. *Egyptian Journal of Soil Science*, 36, 329-
 489 342.
- 490 Ahmad, P., Hashem, A., Abd-Allah, E. F., Alqarawi, A. A., John, R., Egamberdieva, D., &
 491 Gucel, S. (2015a). Role of *Trichoderma harzianum* in mitigating NaCl stress in Indian
 492 mustard (*Brassica juncea* L) through antioxidative defense system. *Front Plant Sci*, 6,
 493 868. doi:10.3389/fpls.2015.00868
- 494 Ahmad, P., Sarwat, M., Bhat, N. A., Wani, M. R., Kazi, A. G., & Tran, L. P. (2015b).
 495 Alleviation of cadmium toxicity in *Brassica juncea* L.(Czern. & Coss.) by calcium
 496 application involves various physiological and biochemical strategies. *PloS one*, 10(1),
 497 e0114571.
- 498 Al-Qurainy, F. (2009). Toxicity of heavy metals and their molecular detection on *Phaseolus*
 499 *vulgaris* (L.). *Australian Journal of Basic Applied Sciences*, 3(3), 3025-3035.
- 500 Al Naggar, Y., Naiem, E., Mona, M., Giesy, J. P., & Seif, A. (2014). Metals in agricultural soils
 501 and plants in Egypt. *Toxicological and Environmental Chemistry*, 96(5), 730-742.
- 502 Alayat, A., Souiki, L., Grara, N., Djebar, M. R., Boumedris, Z. E., Benosmane, S., . . .
 503 Berrebbah, H. (2014). Effects of cadmium on water content, soluble protein, proline
 504 changes and some antioxidant enzymes in wheat (*Triticum durum* desf.) leaves. *Annual*
 505 *Research and Review in Biology*, 4(24), 3835-3847.
- 506 Ali, Z., Mujeeb-Kazi, A., Quraishi, U. M., & Malik, R. N. (2018). Deciphering adverse effects of
 507 heavy metals on diverse wheat germplasm on irrigation with urban wastewater of mixed
 508 municipal-industrial origin. *Environ Sci Pollut Res Int*, 25(19), 18462-18475.
 509 doi:10.1007/s11356-018-1996-0
- 510 Anastassopoulou, J. (2003). Metal–DNA interactions. *Journal of Molecular Structure*, 651-653,
 511 19-26. doi:https://doi.org/10.1016/S0022-2860(02)00625-7
- 512 Atienzar, F. A., Conradi, M., Evenden, A. J., Jha, A. N., & Depledge, M. H. (1999). Qualitative
 513 assessment of genotoxicity using random amplified polymorphic DNA: Comparison of
 514 genomic template stability with key fitness parameters in *Daphnia magna* exposed to
 515 benzo[a]pyrene. *Environ Toxicol Chem*, 18(10), 2275-2282. doi:10.1002/etc.5620181023

- 516 Atienzar, F. A., & Jha, A. N. (2006). The random amplified polymorphic DNA (RAPD) assay
517 and related techniques applied to genotoxicity and carcinogenesis studies: a critical
518 review. *Mutat Res*, 613(2-3), 76-102. doi:10.1016/j.mrrev.2006.06.001
- 519 Aydin, S. S., Büyük, I., Gündüzer, E. G., Büyük, B. P., Kandemir, İ., Duman, D. C., & Aras, S.
520 (2016). Effects of Lead (Pb) and Cadmium (Cd) Elements on Lipid Peroxidation,
521 Catalase Enzyme Activity and Catalase Gene Expression Profile in Tomato Plants.
522 *Journal of Agricultural Sciences*, 22(4), 539-547.
- 523 Azimi, A., Shahriari, F., Fotovat, A., Qale, R. K., & Agje, K. H. (2013). Investigation of DNA
524 changes in wheat (*Triticum aestivum* L.) induced by cadmium using random amplified
525 polymorphic DNA (RAPD) analysis. *African Journal of Biotechnology*, 12(16), 1921-
526 1929. doi:10.5897/AJB12.2836
- 527 Baek, K.-H., & Skinner, D. Z. (2003). Alteration of antioxidant enzyme gene expression during
528 cold acclimation of near-isogenic wheat lines. *Plant Science*, 165(6), 1221-1227.
529 doi:https://doi.org/10.1016/S0168-9452(03)00329-7
- 530 Bates, L. S., Waldren, R. P., & Teare, I. D. (1973). Rapid determination of free proline for water-
531 stress studies. *Plant and Soil*, 39(1), 205-207. doi:10.1007/BF00018060
- 532 Chapman, H. D., & Pratt, P. F. (1961). Methods of analysis for soils, plants, and waters.
533 Riverside: University of California, Division of Agricultural Sciences.
- 534 Ci, D., Jiang, D., Wollenweber, B., Dai, T., Jing, Q., & Cao, W. (2010). Cadmium stress in
535 wheat seedlings: growth, cadmium accumulation and photosynthesis. *Acta Physiologiae*
536 *Plantarum*, 32(2), 365-373. doi:10.1007/s11738-009-0414-0
- 537 Dang, Y. P., Chhabra, R., & Verma, K. S. (1990). Effect of Cd, Ni, Pb and Zn on growth and
538 chemical composition of onion and fenugreek. *Communications in Soil Science and Plant*
539 *Analysis*, 21(9-10), 717-735. doi:10.1080/00103629009368265
- 540 Deswal, M., & Laura, J. S. (2018). Effect of heavy metals cadmium, nickel and lead on the seed
541 germination and early seedling growth of *Pisum sativum*. *Research Journal of Life*
542 *Sciences, Bioinformatics, Pharmaceutical and Chemical Sciences*, 4(2), 368.
543 doi:10.26479/2018.0402.29
- 544 Gjorgieva, D., Kadifkova Panovska, T., Ruskovska, T., Bačeva, K., & Stafilov, T. (2013).
545 Mineral nutrient imbalance, total antioxidants level and DNA damage in common bean
546 (*Phaseolus vulgaris* L.) exposed to heavy metals. *Physiology and Molecular Biology of*
547 *Plants : An International Journal of Functional Plant Biology*, 19(4), 499-507.
548 doi:10.1007/s12298-013-0196-0
- 549 Gornall, A. G., Bardawill, C. J., & David, M. M. (1949). Determination of serum proteins by
550 means of the biuret reaction. *J Biol Chem*, 177(2), 751-766.
- 551 Habig, W. H., Pabst, M. J., & Jakoby, W. B. (1974). Glutathione S-transferases. The first
552 enzymatic step in mercapturic acid formation. *J Biol Chem*, 249(22), 7130-7139.
- 553 Jafarnejadi, A. R., Homae, M., Sayyad, G., & Bybordi, M. (2011). Large Scale Spatial
554 Variability of Accumulated Cadmium in the Wheat Farm Grains. *Soil and Sediment*
555 *Contamination: An International Journal*, 20(1), 98-113.
556 doi:10.1080/15320383.2011.528472
- 557 Jalmi, S. K., Bhagat, P. K., Verma, D., Noryang, S., Tayyeba, S., Singh, K., . . . Sinha, A. K.
558 (2018). Traversing the Links between Heavy Metal Stress and Plant Signaling. *Front*
559 *Plant Sci*, 9, 12. doi:10.3389/fpls.2018.00012

- 560 Jhang, T., & Shasany, A. K. (2012). Random amplified marker technique for plants rich in
561 polyphenols. *Methods Mol Biol*, 862, 61-74. doi:10.1007/978-1-61779-609-8_6
- 562 Kabata-Pendias, A., & Pendias, H. (2001). *Trace elements in soils and plants* (3rd ed.). Boca
563 Raton, FL, USA: CRC Press.
- 564 Li, H., Luo, H., Li, D., Hu, T., & Fu, J. (2012). Antioxidant enzyme activity and gene expression
565 in response to lead stress in perennial ryegrass. *Journal of the American Society for*
566 *Horticultural Science*, 137(2), 80-85.
- 567 Lindsay, W. L., & Norvell, W. A. (1978). Development of a DTPA Soil Test for Zinc, Iron,
568 Manganese, and Copper. *Soil Science Society of America Journal*, 42(3), 421-428.
569 doi:10.2136/sssaj1978.03615995004200030009x
- 570 Liu, D., Li, T. Q., Jin, X. F., Yang, X. E., Islam, E., & Mahmood, Q. (2008). Lead induced
571 changes in the growth and antioxidant metabolism of the lead accumulating and non-
572 accumulating ecotypes of *Sedum alfredii*. *J Integr Plant Biol*, 50(2), 129-140.
573 doi:10.1111/j.1744-7909.2007.00608.x
- 574 Malar, S., Vikram, S. S., Favas, P. J. C., & Perumal, V. (2014). Lead heavy metal toxicity
575 induced changes on growth and antioxidative enzymes level in water hyacinths
576 [*Eichhornia crassipes* (Mart.)]. *Botanical Studies*, 55(1), 54. doi:10.1186/s40529-014-
577 0054-6
- 578 Marzilli, M., Di Santo, P., Palumbo, G., Maiuro, L., Paura, B., Tognetti, R., & Coccozza, C.
579 (2018). Cd and Cu accumulation, translocation and tolerance in *Populus alba* clone
580 (*Villafranca*) in autotrophic in vitro screening. *Environ Sci Pollut Res Int*, 25(10), 10058-
581 10068. doi:10.1007/s11356-018-1299-5
- 582 Meng, J., Wang, W., Li, L., Yin, Q., & Zhang, G. (2017). Cadmium effects on DNA and protein
583 metabolism in oyster (*Crassostrea gigas*) revealed by proteomic analyses. *Scientific*
584 *Reports*, 7(1), 11716. doi:10.1038/s41598-017-11894-7
- 585 Mohamed, R. A., Aboulila, A. A., El-Kholya, S. Z., & Hamza, A. (2017). Evaluation of genetic
586 polymorphism, genomic template stability, condition factor and hemato-biochemical
587 parameters in response to slow reduction in water level during Nile tilapia (*Oreochromis*
588 *niloticus*) harvest. *The Thai Journal of Veterinary Medicine*, 47(4), 435-448.
- 589 Morales, M. E., Derbes, R. S., Ade, C. M., Ortego, J. C., Stark, J., Deininger, P. L., & Roy-
590 Engel, A. M. (2016). Heavy Metal Exposure Influences Double Strand Break DNA
591 Repair Outcomes. *PloS one*, 11(3), e0151367-e0151367.
592 doi:10.1371/journal.pone.0151367
- 593 Moran, R. (1982). Formulae for determination of chlorophyllous pigments extracted with n,n-
594 dimethylformamide. *Plant Physiology*, 69(6), 1376-1381.
- 595 Nagajyoti, P. C., Lee, K. D., & Sreekanth, T. V. M. (2010). Heavy metals, occurrence and
596 toxicity for plants: a review. *Environmental Chemistry Letters*, 8(3), 199-216. doi:DOI
597 10.1007/s10311-010-0297-8
- 598 Natarajan, A., Vijayarengan, P., & Vijayaragavan, M. (2018). Influence of cadmium on growth
599 and biochemical contents of tomato plants. *Journal of Plant Stress Physiology*, 4, 04-06.
- 600 Omran, M. S., Waly, T. M., Abd Elnaim, E. M., & El Nashar, B. M. B. (1988). Effect of sewage
601 irrigation on yield, tree components and heavy metals accumulation in navel orange trees.
602 *Biological Wastes*, 23(1), 17-24. doi:https://doi.org/10.1016/0269-7483(88)90041-9
- 603 Paglia, D. E., & Valentine, W. N. (1967). Studies on the quantitative and qualitative
604 characterization of erythrocyte glutathione peroxidase. *J Lab Clin Med*, 70(1), 158-169.

- 605 Parlak, K. U. (2016). Effect of nickel on growth and biochemical characteristics of wheat
606 (*Triticum aestivum* L.) seedlings. *NJAS-Wageningen Journal of Life Sciences*, 76, 1-5.
- 607 Placek, A., Grobelak, A., & Kacprzak, M. (2016). Improving the phytoremediation of heavy
608 metals contaminated soil by use of sewage sludge. *International Journal of*
609 *Phytoremediation*, 18(6), 605-618. doi:10.1080/15226514.2015.1086308
- 610 Rizwan, M., Ali, S., Adrees, M., Rizvi, H., Zia-Ur-Rehman, M., Hannan, F., . . . Ok, Y. S.
611 (2016). Cadmium stress in rice: toxic effects, tolerance mechanisms, and management: a
612 critical review. *Environ Sci Pollut Res Int*, 23(18), 17859-17879. doi:10.1007/s11356-
613 016-6436-4
- 614 Saber, M., Hoballah, E., Abouziena, H., Haggag, W. M., El-Ashry, S., & Zaghloul, A. (2016).
615 Management of Sewage Farming in Arid Region: Egyptian Experience. *International*
616 *Scientific Researches Journal*, 72(3), 28-56. doi:10.21506/j.ponte.2016.3.7
- 617 Sardar, K., Ali, S., Hameed, S., Afzal, S., Fatima, S., Shakoor, M. B., . . . Tauqeer, H. M. (2013).
618 Heavy metals contamination and what are the impacts on living organisms. *Greener*
619 *Journal of Environmental Management and Public Safety*, 2(4), 172-179.
- 620 Shahabivand, S., Maivan, H. Z., Mahmoudi, E., Soltani, B. M., Sharifi, M., & Aliloo, A. A.
621 (2016). Antioxidant activity and gene expression associated with cadmium toxicity in
622 wheat affected by mycorrhizal fungus. *Zemdirbyste-Agriculture*, 103(1), 53-60.
- 623 Shahid, M., Pourrut, B., Dumat, C., Nadeem, M., Aslam, M., & Pinelli, E. (2014). Heavy-metal-
624 induced reactive oxygen species: phytotoxicity and physicochemical changes in plants.
625 *Rev Environ Contam Toxicol*, 232, 1-44. doi:10.1007/978-3-319-06746-9_1
- 626 Shokr, M. S., El Baroudy, A. A., Fullen, M. A., El-beshbeshy, T. R., Ramadan, A. R., Abd El
627 Halim, A., . . . Jorge, M. C. O. (2016). Spatial distribution of heavy metals in the middle
628 Nile delta of Egypt. *International Soil and Water Conservation Research*, 4(4), 293-303.
629 doi:https://doi.org/10.1016/j.iswcr.2016.10.003
- 630 Shu, X., Yin, L., Zhang, Q., & Wang, W. (2012). Effect of Pb toxicity on leaf growth,
631 antioxidant enzyme activities, and photosynthesis in cuttings and seedlings of *Jatropha*
632 *curcas* L. *Environ Sci Pollut Res Int*, 19(3), 893-902. doi:10.1007/s11356-011-0625-y
- 633 Sipos, P., & Póka, T. (2002). Threshold limit values for heavy metals in soils in the function of
634 spatial and temporal variation of geochemical factors. Paper presented at the Proceedings
635 of XVII. Congress of Carpathian-Balkan Geological Association Bratislava, September
636 1st-4th.
- 637 Sirhindi, G., Mir, M. A., Abd-Allah, E. F., Ahmad, P., & Guzel, S. (2016). Jasmonic Acid
638 Modulates the Physio-Biochemical Attributes, Antioxidant Enzyme Activity, and Gene
639 Expression in Glycine max under Nickel Toxicity. *Frontiers in Plant Science*, 7, 591.
640 doi:10.3389/fpls.2016.00591
- 641 Sofo, A., Scopa, A., Nuzzaci, M., & Vitti, A. (2015). Ascorbate Peroxidase and Catalase
642 Activities and Their Genetic Regulation in Plants Subjected to Drought and Salinity
643 Stresses. *Int J Mol Sci*, 16(6), 13561-13578. doi:10.3390/ijms160613561
- 644 Stegemann, T., Kruse, L. H., Brutt, M., & Ober, D. (2018). Specific Distribution of Pyrrolizidine
645 Alkaloids in Floral Parts of Comfrey (*Symphytum officinale*) and its Implications for
646 Flower Ecology. *J Chem Ecol*. doi:10.1007/s10886-018-0990-9
- 647 Szolnoki, Z., Farsang, A., & Puskás, I. (2013). Cumulative impacts of human activities on urban
648 garden soils: Origin and accumulation of metals. *Environmental Pollution*, 177, 106-115.
649 doi:https://doi.org/10.1016/j.envpol.2013.02.007

- 650 Theophanides, T., & Anastassopoulou, J. (2017). The effects of metal ion contaminants on the
651 double stranded DNA helix and diseases. *Journal of Environmental Science and Health,*
652 *Part A, 52*(10), 1030-1040. doi:10.1080/10934529.2017.1328950
- 653 Toth, G., Hermann, T., Da Silva, M. R., & Montanarella, L. (2016). Heavy metals in agricultural
654 soils of the European Union with implications for food safety. *Environ Int, 88*, 299-309.
655 doi:10.1016/j.envint.2015.12.017
- 656 Trovato, M., Mattioli, R., & Costantino, p. (2008). Multiple roles of proline in plant stress
657 tolerance and development. *Rendiconti Lincei, 19*(4), 325-346.
- 658 Wan-Ibrahim, W., Sidik, K., & Kuppusamy, U. (2010). A high antioxidant level in edible plants
659 is associated with genotoxic properties. *Food Chemistry, 122*(4), 1139-1144.
- 660 Wuana, R. A., & Okieimen, F. E. (2011). Heavy Metals in Contaminated Soils: A Review of
661 Sources, Chemistry, Risks and Best Available Strategies for Remediation. *ISRN Ecology,*
662 *2011*, 20. doi:10.5402/2011/402647
- 663 Xie, Y., Fan, J., Zhu, W., Amombo, E., Lou, Y., Chen, L., & Fu, J. (2016). Effect of Heavy
664 Metals Pollution on Soil Microbial Diversity and Bermudagrass Genetic Variation.
665 *Frontiers in Plant Science, 7*, 755-755. doi:10.3389/fpls.2016.00755

666

667

668

669

670

671

672

673

674

675

676

677

678

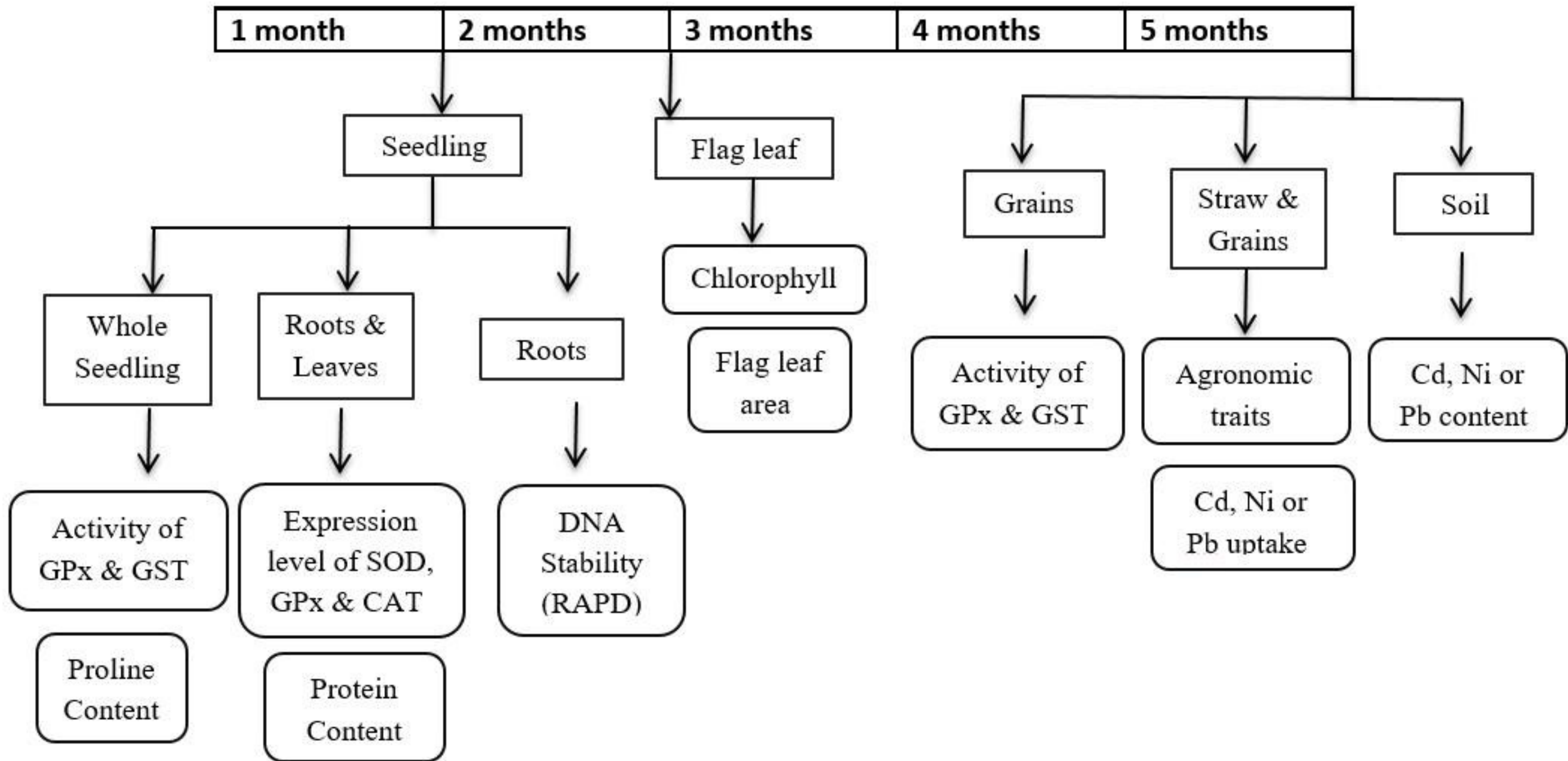
679

680

681 **Figure Legend**

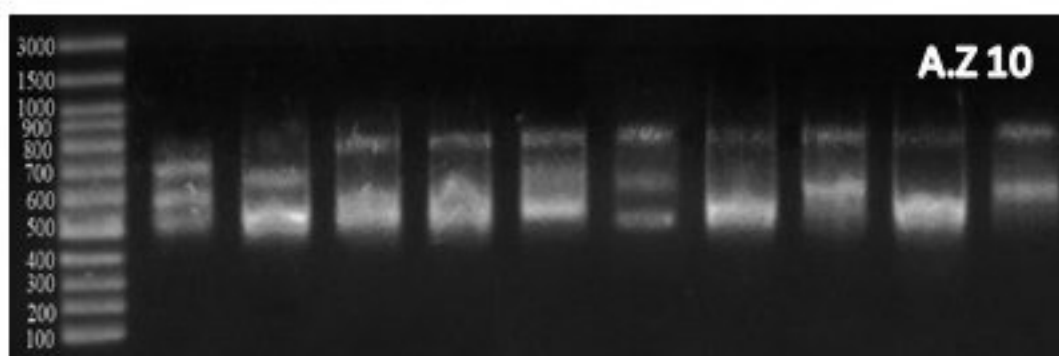
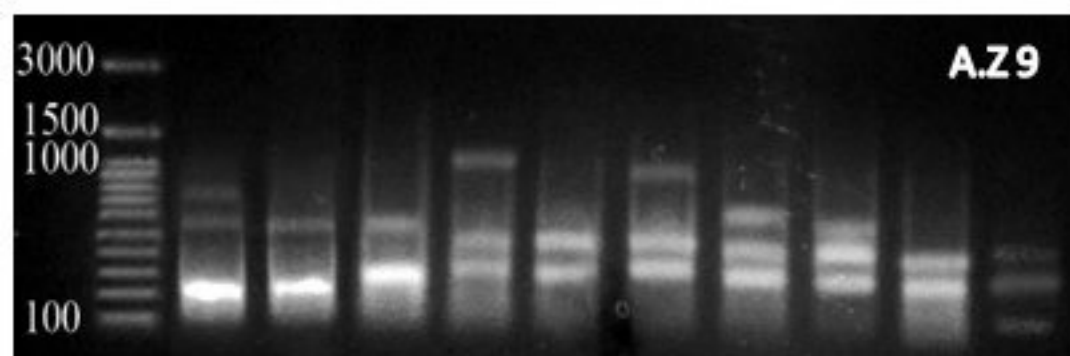
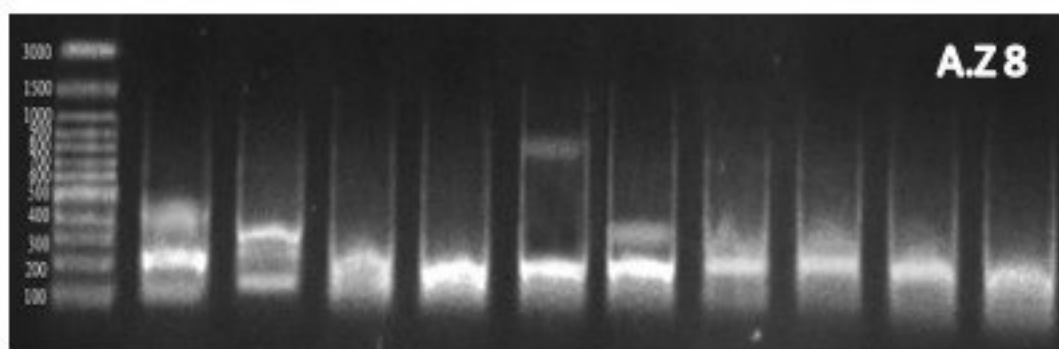
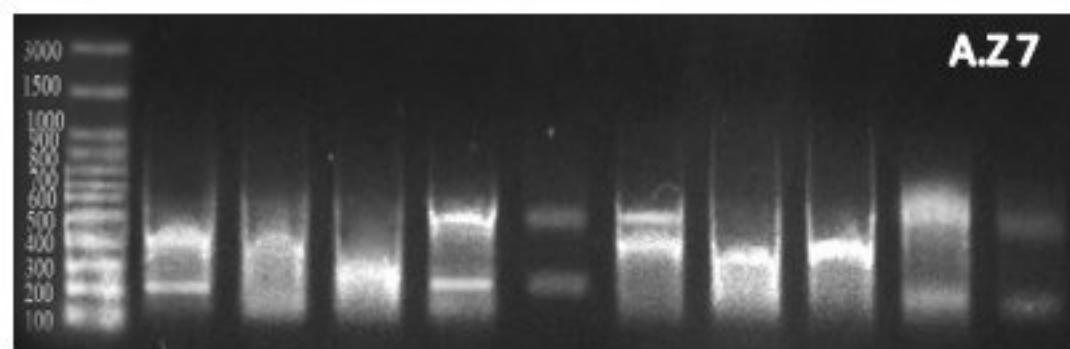
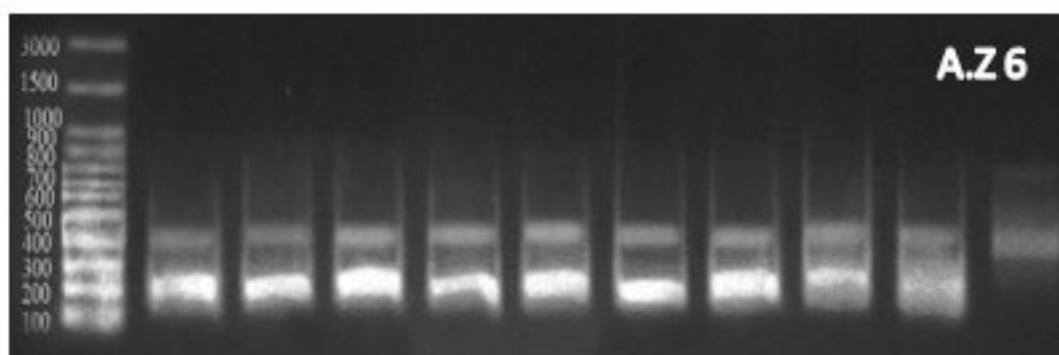
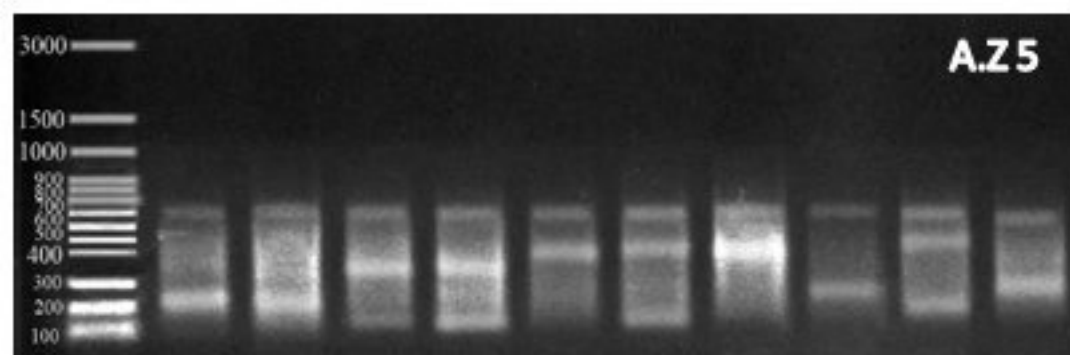
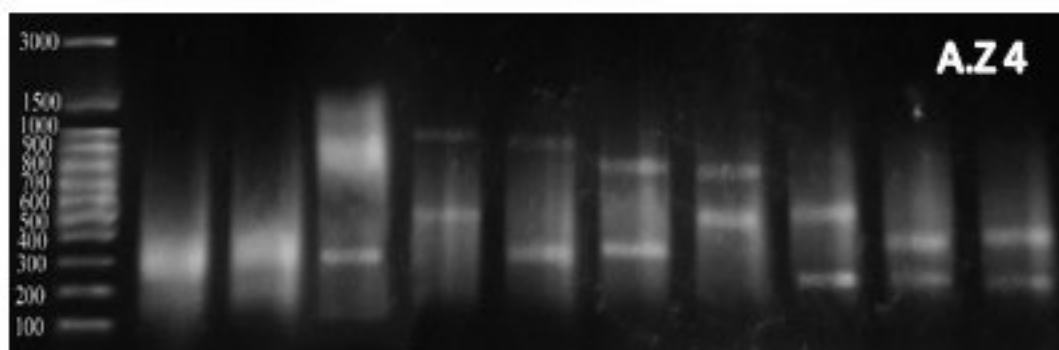
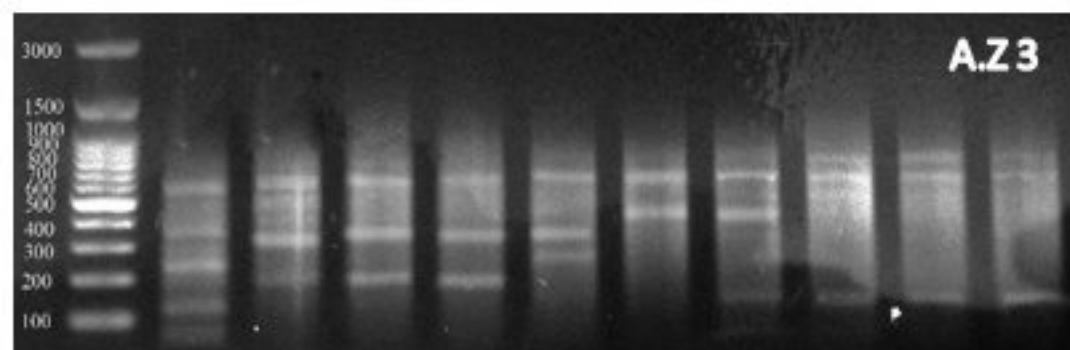
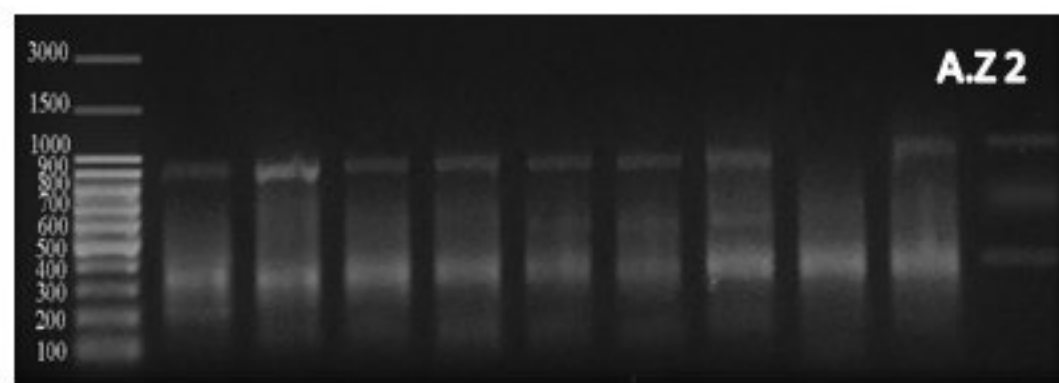
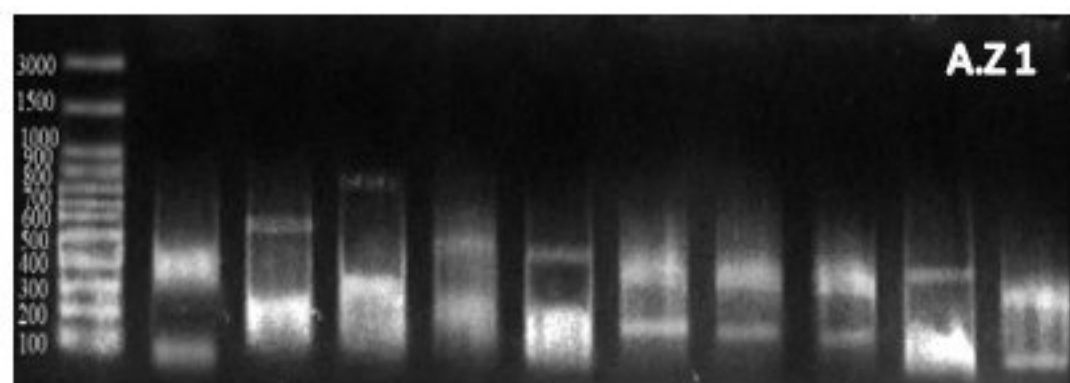
682 **Figure 1. Experimental protocol (Plant sampling and analysis).**

683 **Figure 2. RAPD profiles of genomic DNA from root-tips of wheat seedlings exposed to**
684 **varying Cd, Ni and Pb concentrations.** Lanes M: DNA ladder; 1: control; 2: Cd 30
685 ppm; 3: Cd 60 ppm; 4: Cd 120 ppm; 5: Ni 50 ppm; 6: Ni 100 ppm; 7: Ni 150 ppm; 8: Pb
686 100 ppm; 9: Pb 200 ppm and 10: Pb 300 ppm.



M 1 2 3 4 5 6 7 8 9 10

M 1 2 3 4 5 6 7 8 9 10



Soil samples from Al-Gabal Al-Asfar farm were collected and treated with different concentrations of Cd, Ni and Pb

Wheat grains were sown in

Biochemical Parameters after 2,3 & 5 months

Activity and Expression level of antioxidants

Proline and protein Contents

DNA Stability (RAPD)

Agronomic characteristics

Cd, Ni or Pb content in Straw, Grains and soil

Results

Altered antioxidants enzymes.

Pb showed the highest proline, least protein and chlorophyll contents

High Pb and Cd doses revealed highest polymorphism and lowest genome stability

Heavy metals accumulated mainly in wheat straw and induced genotoxic effect.

Pb toxicity showed poorest agronomic characteristics and induce more genotoxic and phytotoxic effects followed by Cd and Ni.