



HAL
open science

Effects of dietary inclusion of chromium propionate on growth performance, intestinal health, immune response and nutrient transporter gene expression in broilers

Khawar Hayat, Bello Musa Bodinga, Di Han, Xin Yang, Qingzhu Sun, Lotfi Aleya, Mohamed M. Abdel-Daim, Xiaojun Yang

► **To cite this version:**

Khawar Hayat, Bello Musa Bodinga, Di Han, Xin Yang, Qingzhu Sun, et al.. Effects of dietary inclusion of chromium propionate on growth performance, intestinal health, immune response and nutrient transporter gene expression in broilers. *Science of the Total Environment*, 2019, 10 p. <10.1016/j.scitotenv.2019.135869>. <hal-02420154>

HAL Id: hal-02420154

<https://hal.science/hal-02420154v1>

Submitted on 7 Mar 2022

HAL is a multi-disciplinary open access archive for the deposit and dissemination of scientific research documents, whether they are published or not. The documents may come from teaching and research institutions in France or abroad, or from public or private research centers.

L'archive ouverte pluridisciplinaire **HAL**, est destinée au dépôt et à la diffusion de documents scientifiques de niveau recherche, publiés ou non, émanant des établissements d'enseignement et de recherche français ou étrangers, des laboratoires publics ou privés.



Distributed under a Creative Commons CC BY-NC 4.0 - Attribution - Non-commercial use - International License

1 **Effects of dietary inclusion of chromium propionate on growth performance, intestinal**
2 **health, immune response and nutrient transporter gene expression in broilers**

3

4 **Khawar Hayat¹, Bello Musa Bodinga¹, Di Han¹, Xin Yang¹, Qingzhu Sun¹, Lotfi Aleya^{2*},**
5 **Mohamed M. Abdel-Daim^{3,4}, Xiaojun Yang¹**

6

7 *¹College of Animal Science and Technology, Northwest A&F University, Yangling, Shaanxi,*
8 *China, 712100*

9 *²Bourgogne Franche-Comté University, Chrono-Environnement Laboratory, UMR CNRS 6249,*
10 *25030 Besançon Cedex, France*

11 *³Department of Zoology, Science College, King Saud University, Riyadh 11451, Saudi Arabia*

12 *⁴Pharmacology Department, Faculty of Veterinary Medicine, Suez Canal University, Ismailia*
13 *41522, Egypt*

14

15 ***Corresponding author** lotfi.aleya@univ-fcomte.fr (Lotfi Aleya)

16

17

18

19

20

21 Abstract

22 The intent of the present study was to evaluate the effect of chromium (Cr^{3+}) as chromium
23 propionate on growth performance, organ index, immune response, intestinal morphology and
24 nutrient transporter gene expression in broilers. One-day-old broiler chicks ($n=756$) were divided
25 into six experimental groups of 126 chicks; each group was further divided into 7 replicates (18
26 chicks/replicate). All birds were offered corn-soybean diets supplemented with Cr^{3+} at 0, 0.10,
27 0.15, 0.20, 0.25 or 0.30 mg/kg. Dietary inclusion of Cr^{3+} at various levels yielded significantly
28 better growth performance and organ index in birds. Similarly, antibody titre against Newcastle
29 disease and avian influenza H5 at various ages was found to be significantly higher in birds that
30 received 0.15 mg/kg Cr^{3+} in the diet. Significant results with respect to villus height (VH), crypt
31 depth (CD) and VH:CD were observed in all groups that received Cr^{3+} in the diet compared to
32 control. Moreover, it was observed that different levels of Cr^{3+} supplementation of the diet also
33 increased the expression of the nutrient transporter genes SGLT1, GLUT2, rBAT and CAT1 in
34 broilers. The findings of the present study suggest that dietary inclusion of Cr^{3+} at various levels
35 may have beneficial effects on growth performance, immunity, intestinal morphology and
36 nutrient transporter gene expression in broilers. Supplementation of the diet with Cr^{3+} at a level
37 of 0.15 mg/kg could yield better performance in broiler production.

38

39 **Key words:** broilers; chromium; growth performance; organ index; antibody titre; gene
40 expression

41

42 **1. Introduction**

43 With the rapid development of the poultry industry, scientists around the globe are now focusing
44 on the role of micronutrients in poultry diets to ensure better production. Although
45 micronutrients are required in minute quantities in the poultry diet, they play an important role in
46 improving birds' health and vigour. In recent decades, the use of Cr in the nutrition of domestic
47 animals has attracted the attention of researchers. Chromium can be present in the environment
48 at numerous oxidation states, with Cr^{3+} being the most stable form (NRC, USA, 2005).
49 Chromium is a micronutrient that is involved in the metabolism of carbohydrates, proteins, lipids
50 and nucleic acids (Khan et al., 1994; Sands and Smith, 1999). Chromium activates many of the
51 enzymes responsible for protein and nucleic acid synthesis (Anderson, 1994). Dietary
52 supplementation with Cr^{3+} is recommended by the National Research Council (NRC)
53 Washington, USA for animals suffering from environmental stress (NRC, 1997). However, Cr^{3+}
54 supplementation poses a challenge because the dose must be adjusted to provide the actual
55 needed concentration to avoid hepatotoxic, nephrotoxic, oxidative and DNA-damaging effects
56 (Deng et al., 2015; Jin et al., 2015). Studies provide indications for the nutritional and
57 physiological role of Cr^{3+} as a micronutrient (Anderson, 1994). The beneficial effects of Cr^{3+} are
58 most obvious in animals that are under environmental, dietary and hormonal stress because Cr^{3+}
59 can reduce the harmful effects of stress caused by various environmental factors (Lien et al.,
60 1999; Sahin et al., 1992). Some studies have shown that chromium supplementation of broiler
61 feed positively affects the growth performance and carcass characteristics of birds (Debski et al.,
62 2004; Toghyani et al., 2006; Sahin et al., 2010; Huang et al., 2016). However, other studies
63 reported opposite results (Moeini et al., 2011; Ghazi et al., 2012; Kim et al., 1996).

64 At present, poultry diseases represent the major threat to the poultry industry. Newcastle disease
65 virus (NDV), a **virus that causes a deadly infection**, infects many bird species and is highly
66 contagious and fatal to susceptible birds (Alexander et al., 1998). NDV, which belongs to the
67 genus *Avulavirus* and the family Paramyxoviridae, is the causative agent of a respiratory and
68 neurological disease (Newcastle disease) that can cause up to 100% morbidity and mortality in
69 infected birds (Alexander, 2003). Newcastle disease is primarily controlled by maintaining a
70 hygienic environment and a good vaccination program. Currently, vaccination against many
71 diseases is helpful in controlling severe sickness and mortality in infected birds (Van Boven et
72 al., 2008). Recently, lentogenic strains of NDV have been used to induce a protective immune
73 response and studies suggest that different vaccine strategies have specific advantages and
74 disadvantages (Bermudez and Stewart, 2003). Chromium can also increase the immune status of
75 broilers by overwhelming the production of corticosterone, a potent immunosuppressant that
76 interferes with antibody production by decreasing leukocyte populations and interfering with
77 lymphocyte function (Sahin et al., 2005; Lee et al., 2003). To determine the usefulness of
78 chromium addition in producing a good-quality poultry diet that improves birds' performance
79 and resistance to diseases, the present study assessed the effect of dietary Cr³⁺ on growth
80 performance, organ index, immune response, histomorphology and nutrient transporter gene
81 expression in broilers.

82

83 **2. Materials and methods**

84 **2.1. Experimental birds and diet**

85 The present study was conducted at the poultry farm of North West Agriculture and Forestry
86 University, Yangling, China. Throughout the experiment, the birds were maintained under

87 constant conditions of temperature, relative humidity, ventilation, light cycle and floor space.
88 The 756 one-day-old broiler chicks used in this experiment were randomly divided into six
89 experimental groups (A, B, C, D, E and F). Chromium (dry, 0.4%) from chromium propionate is
90 designed to be premixed prior to its addition to complete broiler feed. Premix contain 10%
91 chromium (from 0.4% chromium dry) and 90% calcium carbonate (having 35% calcium)
92 delivered Cr @ 0, 0.10, 0.15, 0.20, 0.25 or 0.30 mg/kg in the feed. Each group of 126 chicks was
93 further divided into 7 replicates (18 chicks/replicate). The birds were fed a corn-soybean diet that
94 was formulated to meet all nutritional requirements according to the feeding standard in China
95 (NY/T33-2004) (Table 6).

96 **2.2. Experimental records and management**

97 One-day-old birds were weighed, and the average initial body weight of the birds in each group
98 was calculated. The birds were provided with feed and water *ad libitum* throughout the
99 experiment. The number of dead birds and the temperature and humidity in the birdhouse were
100 recorded on a daily basis. Management requirements and data were recorded regularly. The birds
101 were vaccinated according to routine immunization practice in the region. The broiler house was
102 kept clean and was disinfected on a regular basis.

103 **2.3. Clinical observation**

104 During the trial period, the clinical features of the broilers, including their consumption of food
105 and water, were observed daily and bad symptoms (abnormal health conditions or mortality), if
106 any, were noted. All dead birds were dissected, and a detailed post-mortem was conducted.

107 **2.4. Growth performance**

108 At 0, 21 and 42 days, the birds were weighed, and the feed intake of each replicate was recorded.
109 Average daily feed intake (ADFI), average daily weight gain (ADWG), feed conversion ratio
110 (FCR) and mortality were calculated for the periods 0-21 and 0-42 days.

111

112 **2.5. Organ index**

113 Seven birds from each treatment group whose weights were close to the average body weights
114 (birds having minimum difference in body weight to average weight of their respective
115 treatment) of the birds in their respective groups were selected at the age of 21 and 42 days and
116 deprived of feed for 12 h to determine weight loss during the pre-slaughter holding period. The
117 pre-slaughter body weight loss was expressed as g/kg initial body weight of each individual bird.
118 Later in the study, these birds were slaughtered, and the organ index (relative organ weight of the
119 liver, heart, spleen and thymus) was recorded and expressed as g/kg pre-slaughter live body
120 weight of the individual birds.

121 **2.6. Immune response**

122 The birds were tested for serum antibody titres on the 7th, 14th, 21st and 28th days after
123 vaccination against Newcastle disease and on the 28th day after vaccination against avian
124 influenza H5 by HI test according to a standard protocol (OIE, 2012).

125 **2.7. Intestinal morphology**

126 At 21 and 42 days of age, seven birds from each treatment group (1 bird/replicate) whose body
127 weights were close to the average body weights of their respective groups were selected. The
128 birds were slaughtered, and the duodenum, jejunum and ileum were removed and cleaned by
129 flushing with pre-cooled saline. Sections (approximately 1 cm in length) were cut from the

130 middle of the duodenum, jejunum and ileum and fixed in 4% paraformaldehyde. The villus
131 height (VH), the crypt depth (CD) and the thickness of the intestinal wall (WT) were measured.

132 **2.8. RNA isolation and quantitative real - time PCR**

133 The mRNA expression of SGLT1, GLUT2, rBAT, and CAT1 in intestinal mucosal samples from
134 the duodenum, jejunum and ileum was determined by qRT - PCR. The primers used in these
135 experiments (Table 7) were designed using Premier 5.0 according to sequences obtained from
136 NCBI. Total RNA was isolated using trizol reagent according to the manufacturer's instructions
137 (Invitrogen, Carlsbad, CA, USA). The quantity and quality of the extracted RNA in each sample
138 were determined using a NanoDrop 2000c spectrophotometer (Thermo Fisher Scientific, Inc.,
139 Wilmington, DE, USA). The RNA was stored at -20°C until further use. The RNA was
140 reverse - transcribed using a Takara cDNA transfer kit (Bio - Rad, Hercules, CA, USA). The
141 reaction was conducted in a total volume of 20 μL consisting of 1 μL cDNA, 1 μL forward
142 primer, 1 μL reverse primer, 10 μL SYBR Premix ExTaq and 7 μL nuclease - free water. The
143 qPCR was conducted in triplicate using 96 - well microwell plates in a Bio - Rad iQ5 Real -
144 Time PCR Detection System (Bio - Rad, Hercules, CA, USA). The PCR conditions were as
145 follows: 95°C for 5 min followed by 40 cycles of 95°C for 10 s, 60°C for 30 s and 72°C for 30 s
146 and a final extension at 72°C for 5 min. The mRNA expression of each gene was calculated
147 using the $2^{-\Delta\Delta\text{Ct}}$ method described by Livak and Schmittgen (2001) after normalizing to β -
148 actin.

149 **2.9. Statistical analysis**

150 The experimental data were analysed by one-way ANOVA using SPSS 20.0 (SPSS Inc.,
151 Chicago, IL, USA). A probability value of $P < 0.05$ was considered to indicate statistical
152 significance. The notable differences between groups were identified by Duncan's multiple
153 comparisons test.

154 **3. Results**

155 **3.1. Growth Performance**

156 Cr^{3+} supplementation of the birds' feed resulted in significantly higher ADFI in group B (dietary
157 supplementation with Cr^{3+} at 0.10 mg/kg), followed by groups C, A, F, D and E, in that order, at
158 1-21 days of age. ADWG was significantly higher in the birds in groups B and C (dietary
159 supplementation with Cr^{3+} at 0.10 and 0.15 mg/kg, respectively) compared to the other groups at
160 1-21 and 1-42 days of age, respectively. Moreover, the feed conversion ratio was found to be
161 significantly better in group C (dietary supplementation with Cr^{3+} at 0.15 mg/kg) than in any of
162 the other groups, followed by groups D, E, F, B and A, in that order, at 1-21 days of age. At 1-42
163 days of age, the feed conversion ratio was found to be significantly ($P < 0.05$) better in all
164 chromium-supplemented groups compared to the control. The best FCR was observed in group
165 C, followed by groups B, D, E, F and A (figure 1).

166 **3.2. Organ Index**

167 The birds in group B, which were offered a diet supplemented with Cr^{3+} at 0.10 mg/kg, showed a
168 significantly increased spleen index at 21 days of age compared with the birds in the control and
169 D, E and F groups ($P < 0.05$). The birds in group F, which received a diet supplemented with Cr^{3+}
170 at 0.30 mg/kg, showed a significantly increased thymus index at 21 days of age. At 42 days of
171 age, it was found that the birds in group D, which received a diet supplemented with Cr^{3+} at 0.15
172 mg/kg, had significantly higher heart index compared to the control and to all other treatment

173 groups. Groups C and F, whose feed was supplemented with Cr³⁺ at 0.15 mg/kg and 0.30 mg/kg,
174 respectively, showed significantly better thymus index results compared with the control and
175 with groups B and E (Table 1).

176 **a. Immune response**

177 The birds in treatment group C, which were offered a diet supplemented with 0.15 mg/kg Cr³⁺,
178 showed significantly higher antibody titres than the control group and group E on day 7 after
179 immunization against Newcastle disease. At 21 days after immunization, the birds in groups C
180 and D showed significantly higher antibody titres against Newcastle disease than the control
181 group and group E; at 28 days after immunization, they showed significantly higher antibody
182 titres than the control group and group B. The antibody titre against H5 at 21 days after
183 immunization was found to be significantly higher in the birds in group D than in the other
184 treatment groups, although it was not significantly different from the control (Table 2).

185 **b. Intestinal morphology**

186 Figures 2-4 show the intestinal morphology of the animals. The results presented in Tables 3-5
187 show that the birds in group C, which received a diet supplemented with Cr³⁺ at 0.15 mg/kg, had
188 significantly increased crypt depth compared to the control group. Groups C and F showed
189 significantly increased WT in the jejunum compared to all of the other groups at 21 days of age .
190 In addition, the birds in groups B, C, D and E, which received diets supplemented with Cr³⁺ at
191 0.10, 0.15, 0.20 and 0.25 mg/kg, respectively, showed a significantly reduced VH:CD ratio in the
192 jejunum at 21 days of age (P <0.05).

193 **c. Glucose and amino acid transporter gene expression**

194 Dietary supplementation with Cr³⁺ significantly increased the relative expression of the SGLT1
195 gene in the duodenum of broilers at 21 days of age. The highest expression of the SGLT1 gene

196 was observed in group F (dietary supplementation with 0.30 mg/kg Cr³⁺), followed by groups D,
197 C, E, B and A. At 42 days of age, CAT1 mRNA gene expression was highest in group D
198 (dietary supplementation with 0.20 mg/kg Cr³⁺), followed by groups F, A, B, E and A. In the
199 jejunum, CAT1 mRNA expression was significantly higher in group C (dietary supplementation
200 with 0.15 mg/kg Cr³⁺) than in any of the other groups, while at 42 days of age GLUT2 mRNA
201 expression was significantly higher in all of the chromium-supplemented groups than in the
202 control. However, at 42 days of age, CAT1 mRNA showed significantly higher expression in
203 the jejunum in groups C and F compared to all other groups. In the ileum at 21 days of age,
204 GLUT2 mRNA expression was significantly higher in group C (dietary supplementation with
205 0.15 mg/kg Cr³⁺) than in any of the other groups, whereas CAT1 expression was significantly
206 higher in groups B and C compared to all other groups. At 42 days of age, GLUT2 expression in
207 the ileum was highest in group C, followed by groups D, B, F, E and A, and CAT1 expression
208 was significantly higher (P <0.05) in group C compared to all the other groups (figure 5).

209 **4. Discussion**

210 In the present study, birds were reared under normal conditions without exposure to obvious
211 stress factors. The results indicate that supplementation of the diet with Cr³⁺ at various
212 concentrations had significant effects on the growth performance (ADFI, ADWG and FCR) of
213 broilers at different ages. Dietary supplementation with Cr³⁺ significantly increased ADFI in the
214 birds in group B at 1-21 days of age. ADWG was significantly higher in the birds in groups B
215 and C than in those in the other groups at 1-21 and 1-42 days of age. Moreover, the feed
216 conversion ratio was found to be significantly better in group C than in any of the other groups at
217 1-21 days of age. At 1-42 days of age, the feed conversion ratio was significantly better in all
218 chromium-supplemented groups than in the control. Best FCR was obtained in group C. These

219 results are consistent with the results of some previous studies. Toghiani et al (2006) reported
220 that dietary supplementation with CrPic at increased levels (up to 1,500 $\mu\text{g}/\text{kg}$) enhanced body
221 weight and feed intake without any adverse effect on FCR in broilers reared under heat stress.
222 Sahin et al (2010) found a beneficial effect of CrPic on body weight gain in quail. Huang et al
223 (2016) found that supplementation of the diet with chromium improved the dressing
224 percentage of broilers reared under heat stress. Afrin et al (2016) found that dietary
225 chromium supplementation significantly increased body weight and feed intake in broilers.
226 Kheiri and Toghiani (2009) reported that chromium supplementation of the diet significantly
227 increased body weight in broilers without altering feed intake or FCR. Naghieh et al. (2010)
228 found that the feed intake and body weight of broilers offered a diet supplemented with Cr^{3+}
229 were significantly increased. El-Kholy et al. (2017) reported that inclusion of chromium in the
230 diet increased the daily body weight gain of broilers reared under heat stress conditions without
231 affecting overall growth performance. However, the results of some other studies are contrary to
232 those of the present study. It was reported that dietary addition of organic and inorganic Cr^{3+} at
233 different levels resulted in no difference in weight gain or feed intake in heat- stressed broilers
234 (Moeini et al., 2011). In another study, it was found that supplementation of the diet with organic
235 or inorganic Cr^{3+} had no effect on feed intake or body weight gain in broilers reared under heat
236 stress conditions. Furthermore, it was observed that chromium supplementation of the diet did
237 not affect any performance parameters (body weight gain, feed intake or feed conversion ratio)
238 in broilers (Ghazi et al., 2012). The differences among the outcomes recorded in various studies
239 could be attributed to various factors such as the use of different forms of chromium, different
240 environmental conditions (i.e., temperature, source of carbohydrate, diet level), the duration of
241 treatment, the treatment dose, the response of the target birds to treatment, and the birds' health

242 status. Variable effects of chromium supplementation of the broiler diet on carcass
243 characteristics have been reported in numerous studies (Anderson, 1987). The results of the
244 current study confirm that variability. Cr³⁺ supplementation at 0.10 mg/kg (group B)
245 significantly increased the spleen index. However, Cr³⁺ supplementation at 0.30 mg/kg
246 significantly increased the thymus index in 21-day-old broilers. At 42 days of age, the birds in
247 group D showed a significantly increased heart index compared to the other groups.
248 Furthermore, the birds in groups C and F showed a significantly better thymus index compared
249 to those of control B and E groups. However, the effects of chromium on the liver and the bursa
250 of Fabricius were not significant. Similar variability has been reported in other studies (Rao et
251 al., 2012; Hossain et al., 1998).

252 The results of the present study showed that dietary Cr³⁺ supplementation boosted antibody titre
253 against Newcastle disease and avian influenza. Treatment group C showed significantly higher
254 antibody titre compared to the control and group E on day 7 post-immunization against
255 Newcastle disease. Birds of groups C and D showed significantly higher antibody titres against
256 Newcastle disease compared to the control and group E on day 21 post-immunization.
257 Furthermore significantly higher titres than the control and group B on day 28 post-
258 immunization. The antibody titre against H5 on day 21 after immunization was found to be
259 significantly higher in the birds of group D compared to all other treatment groups, although it
260 was similar to that of the control. Enhancement of the immune response of birds receiving
261 dietary supplementation with chromium has also been reported by other authors (Sahin et al.,
262 2005; Kheiri and Toghyani, 2009). The better immune response of the animals may be due to the
263 antioxidant activity of chromium. This activity may decrease the production of corticosterone, a
264 potent immunosuppressant that decreases leukocyte populations and obstructs lymphocyte

265 function and antibody production (Sahin et al., 2005; Lee et al., 2003). The results of the present
266 study are consistent with those of Cao et al. (2004), who reported improved total antibody titres
267 in broilers fed diets supplemented with chromium. Another reason for the better immune
268 response may be that chromium modulated the immune response through its effects on
269 cytokines. Cytokines are responsible for signalling between cells. Cytokines and their receptors
270 affect the activities of other cells and play a major role in the regulation of the immune system
271 (Davison, 2003; Callard et al., 1999).

272 It was essential to determine whether the health of the intestinal tract was improved by dietary
273 supplementation with Cr^{3+} to promote nutrient utilization. It is recognized that enzymes in the
274 digestive tract play vital roles in the digestion and absorption of nutrients. The birds in group C
275 showed significantly greater crypt depth compared to the control and to the birds in group F at 21
276 days of age. Groups C and F showed significantly increased WT in the jejunum compared to all
277 other groups at 21 days of age. This may be due to the good health status of the birds and the use
278 of proper management conditions, which can lead to better health of the digestive tract. These
279 results contradict the findings of Makanjuola (2012) and Sandikci et al. (2004), who found a
280 non-significant difference in crypt depth after chromium supplementation of broiler feed. In our
281 study, dietary supplementation with different levels of Cr^{3+} probably led to an increase in the
282 relative expression of genes encoding glucose and amino acid transporters in the intestinal tract
283 at different stages of growth, and this is likely to have resulted in better absorption of nutrients
284 and thus better utilization and improved growth performance of the birds.

285

286 **5. Conclusions**

287 Chromium has generally been used in the poultry industry to reduce heat stress. In the present
288 study, dietary supplementation with Cr³⁺ yielded reasonable results concerning immunity against
289 diseases and intestinal morphology. In addition, Cr³⁺ appears to have favourable effects on
290 growth performance, especially on FCR, a finding that was verified by the higher expression of
291 genes encoding nutrient transporters in different parts of the intestine. The concentrations of Cr³⁺
292 (0.10, 0.15, 0.20, 0.25 or 0.30 mg/kg) used in the present study were found to be safe and can be
293 used in the poultry industry to improve broiler health and performance. Supplementation of
294 broiler feed with 0.15 mg/kg Cr³⁺ was found to be most effective. Further studies conducted
295 under different conditions are needed to assess the potential beneficial results of Cr³⁺ in broiler
296 production.

297

298 **Acknowledgements**

299 We would like to thank the staff of the Animal Nutrition and Feed Science of Northwest A&F
300 University for their help and support during these experiments. This work was funded by the
301 National Key Research and Development Program of China (2017YFD0500500, 20170502200),
302 the Program for Shaanxi Science & Technology (2017TSCXL-NY-04-04, 2015KTCQ02-19) and
303 the Program for Yangling Agricultural High-tech Industries Demonstration Zone (2018CXY-10).
304 This research was partially supported by a grant from KEMIN Zhuhai China, Inc.

305

306 **Conflict of interest**

307 The authors declare no conflicts of interest.

308

309 **References**

- 310 Afrin, S.; Sultana, F.; Chowdhury, S.D.; Roy, B.C. Response of heat stressed commercial
311 broilers to dietary supplementation of organic chromium. *J. Agric. Vet. Sci.* 2016, 9, 65-
312 69.
- 313 Alexander, D.J. Newcastle disease other avian paramyxoviruses and pneumo virus infections.
314 *Diseases of Poultry*, 11th ed.; Saif, Y.M., Barnes, H.J., Glisson, J.R., Fadly, A.D.,
315 McDougald, L.R., Swayne, D.E., Eds.; Ames Iowa State University Press, 2003; pp. 64-
316 87.
- 317 Alexander, D.J.; Morris, H.T.; Pollitt, W.J.; Sharpe, C.E.; Eckford, R.L.; Sainsbury, R.M.;
318 Parsons, G. Newcastle disease outbreaks in domestic fowl and turkeys in Great Britain
319 during 1997. *Vet. Rec.* 1998, 143, 209-212.
- 320 Anderson, R.A. Chromium trace element in human and animal nutrition, Academic Press, New
321 York, 1987. 225-244.
- 322 Anderson, R.A. Stress effects on chromium nutrition of humans and farm animals, Nottingham
323 University Press, Nottingham, UK, 1994, 267-274.
- 324 Bermudez, A.J.; Stewart-Brown, B. Disease prevention and diagnostic. *Diseases of poultry*, 11th
325 ed.; Saif, Y.M., Eds.; IA Iowa State Press, 2003; pp. 17-55.
- 326 Callard, R.; George, A.J.; Stark, J. Cytokines, chaos, and complexity. *Immunity.* 1999, 11, 507-
327 513.
- 328 Cao, J.; Li, K.; Lu, X.; Zhao, Y. Effects of florfenicol and chromium (III) on humoral immune
329 response in chicks. *Asian Australas. J. Anim. Sci.* 2004, 17, 366-370.
- 330 Davison, T. The immunologists' debt to the chicken. *Brit. Poult. Sci.* 2003, 44, 6-21.
- 331 Debski, B.; Zalewski, W.; Gralak, M.A.; Kosla, T. Chromium-yeast supplementation of chicken
332 broilers in an industrial farming system. *J. Trace Elemen. Med. Biol.* 2004, 18, 47-51.

- 333 Deng, G.; Wu, K.; Cruce, A.A.; Bowman, M.K.; Vincent, J.B. Binding of trivalent chromium to
334 serum transferrin is sufficiently rapid to be physiologically relevant. *J. Inorg. Biochem.*
335 2015, 143, 48-55.
- 336 El-Kholy, M.S.; El-Hindawy, M.M.; Alagawany, M.; El-Hack, M.E.A.; El-Gawad, S.A.; El-
337 Sayed, A.E.H. Dietary supplementation of chromium can alleviate negative impacts of
338 heat stress on performance, carcass yield and some blood hematology and chemistry
339 indices of growing Japanese quail. *Biol. Trace Elem. Res.* 2017,10, 1007/s12011-017-
340 0936-z.
- 341 Ghazi, S.H.; Habibian, M.; Moeini, M.M.; Abdolmohammadi, A.R. Effects of different levels of
342 organic and inorganic chromium on growth performance and immunocompetence of
343 broilers under heat stress. *Biol. Trace Elem. Res.* 2012, 146, 309–317.
- 344 Hossain, S.M.; Barreto, S.L.; Silva, C.G. Growth performance and carcass composition of
345 broilers fed supplemental chromium from chromium yeast. *Anim. feed sci. technol.* 1998,
346 71, 217-228.
- 347 Huang, Y.; Yang, J.; Xiao, F.; Lloyd, K.; Lin, X. Effects of supplemental chromium source and
348 concentration on growth performance, carcass traits and meat quality of broilers under
349 heat stress conditions. *Biol. Trace Elem. Res.* 2016, 170, 216-223.
- 350 Jin, Y.; Liu, Z.; Liu, F.; Ye, Y.; Peng, T.; Fu, Z. Embryonic exposure to cadmium (II) and
351 chromium (VI) induce behavioral alterations, oxidative stress and immunotoxicity in
352 Khan, R.U.; Naz, S., Dhama, K. Chromium: Pharmacological applications in heat-stressed
353 poultry. *Int. J. Pharmacol.* 2014, 10, 213-317.
- 354 Kheiri, F.; Toghyani, M. Effect of different levels of inorganic chromium on performance and
355 immunity of broiler chicks. *J. Anim. Vet. Adv.* 2009, 23, 1819-1823.

- 356 Kim, Y.; Han, I. K.; Choi, Y.; Shin, I.; Chae, B.; Kang, T. Effects of dietary levels of chromium
357 picolinate on growth performance, carcass quality and serum traits in broiler chicks.
358 Asian-Australas. J. Anim. Sci. 1996, 9, 341-347.
- 359 Lee, D.N.; Wu, F.Y.; Cheng, Y.H.; Lin, R.S.; Wu, P.C. Effects of dietary chromium picolinate
360 supplementation on growth performance and immune responses of broilers. Asian
361 Australas. J. Anim. Sci. 2003, 16, 227-233.
- 362 Lien, T.; Horng, Y.; Yang, K. Performance, serum characteristics, carcass traits and lipid
363 metabolism of broilers as affected by supplement of chromium picolinate. Brit. Poult.
364 Sci. 1999, 40, 357-363.
- 365 Livak, K.J.; Schmittgen, T.D. Analysis of relative gene expression data using real-time
366 quantitative PCR and the $2^{-\Delta\Delta CT}$ method. Methods. 2001, 25, 402–408.
- 367 Makanjuola, B.A.; Adebisi, O.A. Effect of inorganic chromium supplementation on the
368 intestinal mucosa development of heat stressed broilers. Glob. J. Sci. Front. Res. Chem.
369 2012, 12, 56-60.
- 370 Moeini, M.M.; Bahrami, A.; Ghazi, S.; Targhibi, M.R. The effect of different levels of organic
371 and inorganic chromium supplementation on production performance, carcass traits and
372 some blood parameters of broiler chicken under heat stress condition. Biol. Trace Elem.
373 Res. 2011, 144, 715–724.
- 374 Naghieh, A.; Toghyani, M.; Gheisari, A.A.; Saeed, S.E.; Miranzadeh, H. Effect of different
375 sources of supplemental chromium on performance and immune responses of broiler
376 chicks, J. Anim. Vet. Adv. 2010, 9, 354-358.
- 377 National Research Council (NRC). Mineral tolerance of animals. Second revised edition,
378 Committee on minerals and toxic substances in diets and water for animals, Board on

- 379 agriculture and natural resources, Division on earth and life studies. National Academy
380 Press, Washington D.C. USA. 2005.
- 381 National Research Council (NRC). The Role of Chromium in Animal Nutrition. National
382 Academy Press, Washington, D.C. USA.1997.
- 383 OIE, Chapter 2.3.14. Newcastle disease, in: OIE terrestrial manual: manual of diagnostic tests
384 and vaccines for terrestrial animals, World Organisation for Animal Health, Paris,
385 France, 2012.
- 386 Rao, S.R.; Raju, M.; Panda, A.; Poonam, N.; Murthy, O.K.; Sunder, G.S. Effect of dietary
387 supplementation of organic chromium on performance, carcass traits, oxidative
388 parameters, and immune responses in commercial broiler chickens. *Biologic. Trace Elem.
389 Res.* 2012, 147, 135-141.
- 390 Sahin, K.; Ozbey, O.; Onderci, M.; Cikim, G.; Aysondu, M. Chromium supplementation can
391 alleviate negative effects of heat stress on egg production, egg quality and some serum
392 metabolites of laying Japanese quail. *The J. nutri.* 1992, 132, 1265-1268.
- 393 Sahin, N.; Sahin, K.; Onderci, M.; Gursu, M.F.; Cikim, G.; Vijaya, J.; Kucuk, O. Chromium
394 picolinate, rather than biotin, alleviates performance and metabolic parameters in
395 heatstressed quail. *Br. Poult. Sci.* 2010, 46, 457–463.
- 396 Sahin, N.; Sahin, K.; Onderci, M.; Gursu, M.F.; Cikim, G.; Vijaya, J.; Kucuk, O. Chromium
397 picolinate, rather than biotin, alleviates performance and metabolic parameters in heat-
398 stressed quail. *Brit. Poult. Sci.* 2005, 46, 457-463.
- 399 Sandikci, M.; Eren, U.; Onol, A.; Kum, S. The effect of heat stress and the use of *Saccharomyces*
400 *cerevisiae* or (and) bacitracin zinc against heat stress on the intestinal mucosa in quails.
401 *Rev. med. Vet.* 2004, 155, 552-556.

- 402 Sands, J.; Smith, M. Broilers in heat stress conditions: effects of dietary manganese proteinate or
403 chromium picolinate supplementation. *J. Appl. Poult. Res.* 1999, 8, 280-287.
- 404 Toghyani, M.; Shivazad, M.; Gheisari, A.A.; Zarkesh, S.H. Performance, carcass traits and
405 hematological parameters of heatstressed broiler chicks in response to dietary levels of
406 chromium picolinate. *Int. J. Poult. Sci.* 2006, 5, 65–69.
- 407 Van Boven, M.; Bouma, A.; Fabri, T.H.; Katsma, E.; Hartog, L.; Koch, G. Herd immunity to
408 Newcastle disease virus in poultry by vaccination. *Avi. Pathol.* 2008, 37, 1-5.
- 409

410 **Figure legends**

411 **Figure 1. (a-c)** Growth performance of broilers after supplementation of the diet with different
412 levels of chromium propionate. (a) (daily average feed intake g/bird at 1-21, 21-42 and 1-42 days
413 of age); (b) (daily average weight gain g/bird at 1-21, 21-42 and 1-42 days of age); (c) (daily
414 average FCR at 1-21, 21-42 and 1-42 days of age); 0 mg/kg: (basal diet with no chromium
415 propionate supplementation; (b) 0.10 mg/kg: (basal diet+0.10 mg/kg chromium propionate
416 supplementation); (c) 0.15 mg/kg: (basal diet+0.15 mg/kg chromium propionate
417 supplementation); (d) 0.20 mg/kg: (basal diet+0.20 mg/kg chromium propionate
418 supplementation); (e) 0.25 mg/kg: (basal diet+0.25 mg/kg chromium propionate
419 supplementation); (b) 0.30 mg/kg: (basal diet+0.30 mg/kg chromium propionate
420 supplementation). Means with different superscripts are significantly different ($P < 0.05$). The
421 data are presented as mean \pm SE.

422

423 **Figure 2. (a-f)** Duodenal villus histomorphometry of broilers at 42 days. (A) Control (basal diet
424 with no supplementation); (B) (basal diet+chromium propionate 0.10 mg/kg; (C) (basal
425 diet+chromium propionate 0.15 mg/kg); (D) (basal diet+chromium propionate 0.20 mg/kg); (E)
426 (basal diet+chromium propionate 0.25 mg/kg); (F) (basal diet+chromium propionate 0.30
427 mg/kg).

428

429 **Figure 3. (a-f)** Jejunal villus histomorphometry of broilers at 42 days. (A) Control (basal diet
430 without any supplementation); (B) (basal diet+chromium propionate 0.10 mg/kg; (C) (basal
431 diet+chromium propionate 0.15 mg/kg); (D) (basal diet+chromium propionate 0.20 mg/kg); (E)

432 (basal diet+chromium propionate 0.25 mg/kg); (F) (basal diet+chromium propionate 0.30
433 mg/kg).

434

435 **Figure 4.** (a-f) Ileum villus histomorphometry of broilers at 42 days. (A) Control (basal diet
436 without any supplementation); (B) (basal diet+chromium propionate 0.10 mg/kg; (C) (basal
437 diet+chromium propionate 0.15 mg/kg); (D) (basal diet+chromium propionate 0.20 mg/kg); (E)
438 (basal diet+chromium propionate 0.25 mg/kg); (F) (basal diet+chromium propionate 0.30
439 mg/kg).

440

441 **Figure 5.** (a-f) mRNA expression of specific genes at 21 and 42 days of age in different regions
442 of the intestine. (a) (duodenal mRNA expression at 21 days); (b) (duodenal mRNA expression at
443 42 days); (c) (jejunal mRNA expression at 21 days); (d) (jejunal mRNA expression at 42 days;
444 (e) (ileum mRNA expression at 21 days); (f) (ileum mRNA expression at 42 day) 0 mg/kg:
445 (basal diet with no chromium propionate supplementation; (b) 0.10 mg/kg: (basal diet+ 0.10
446 mg/kg chromium propionate supplementation); (c) 0.15 mg/kg: (basal diet+ 0.15 mg/kg
447 chromium propionate supplementation); (d) 0.20 mg/kg: (basal diet+ 0.20 mg/kg chromium
448 propionate supplementation); (e) 0.25 mg/kg: (basal diet+ 0.25 mg/kg chromium propionate
449 supplementation); (b) 0.30 mg/kg: (basal diet+ 0.30 mg/kg chromium propionate
450 supplementation). Means with different superscripts are significantly different ($P < 0.05$). The
451 data are presented as mean \pm SE.

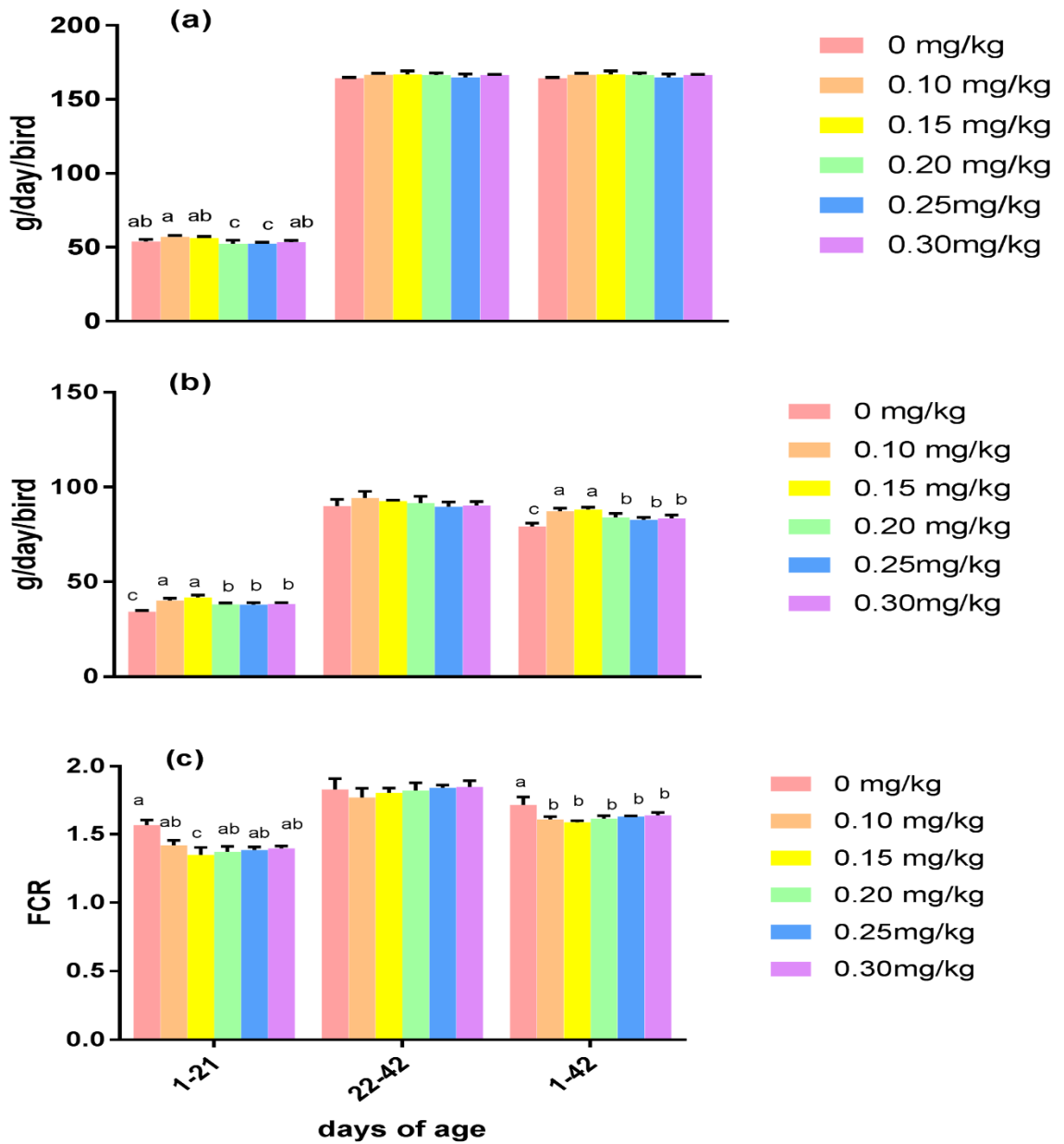


Figure 1.

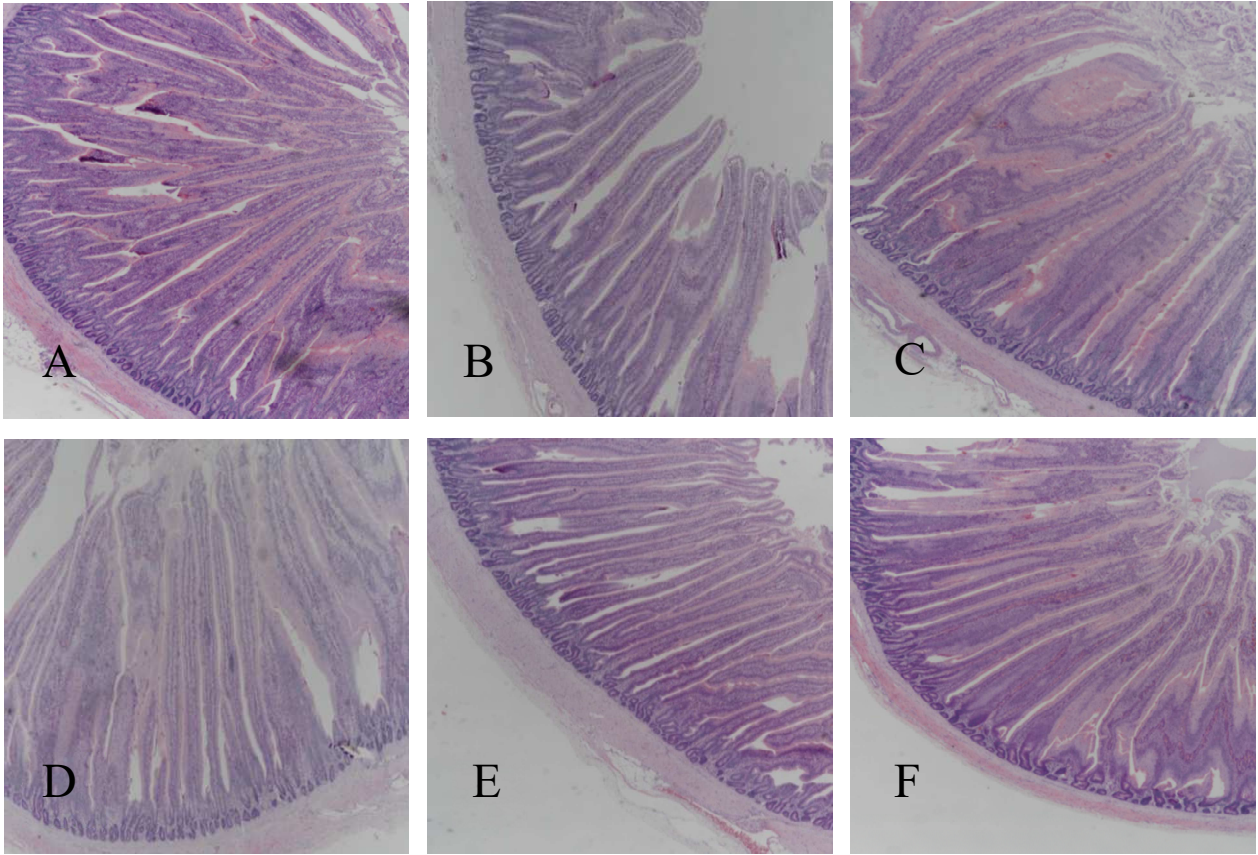


Figure 2.

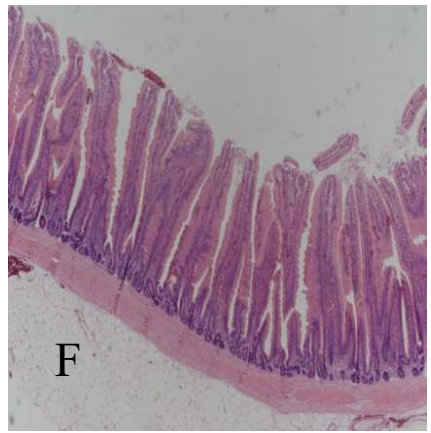
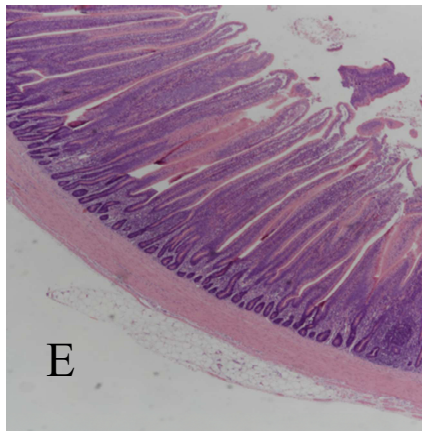
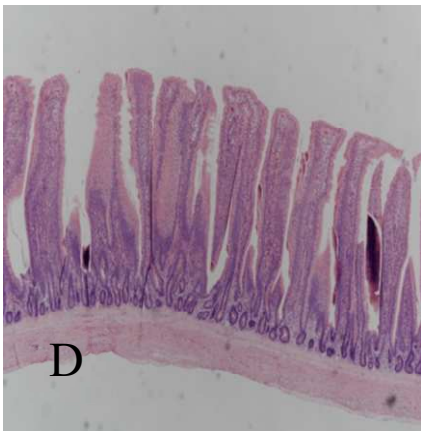
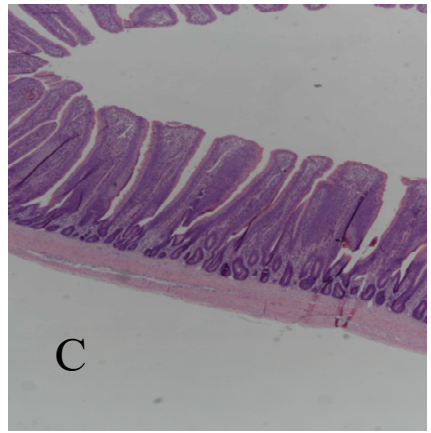
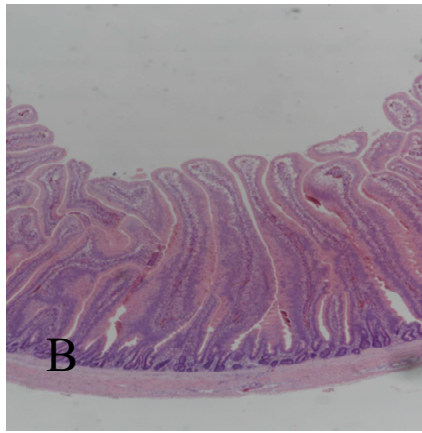


Figure 3.

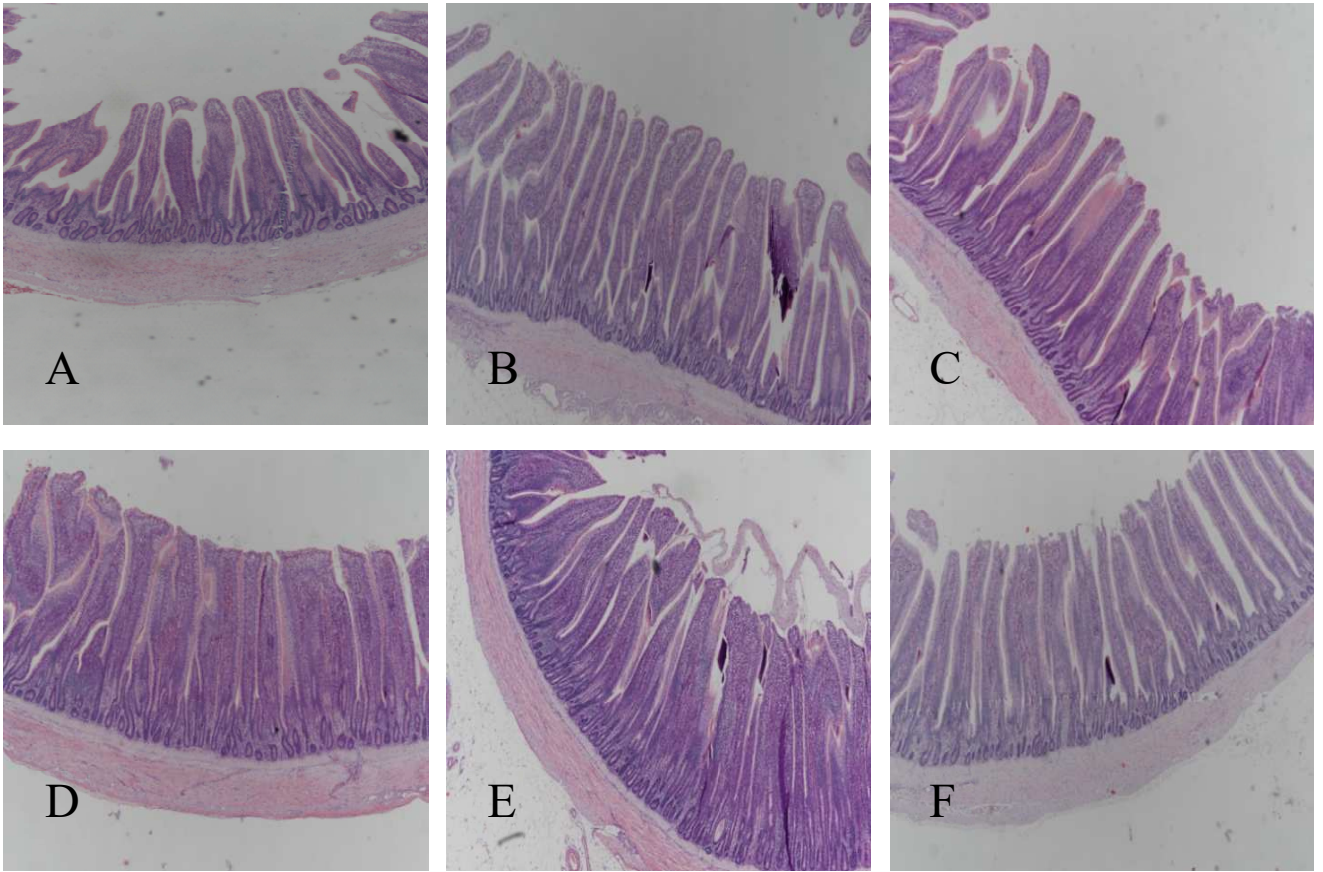


Figure 4.

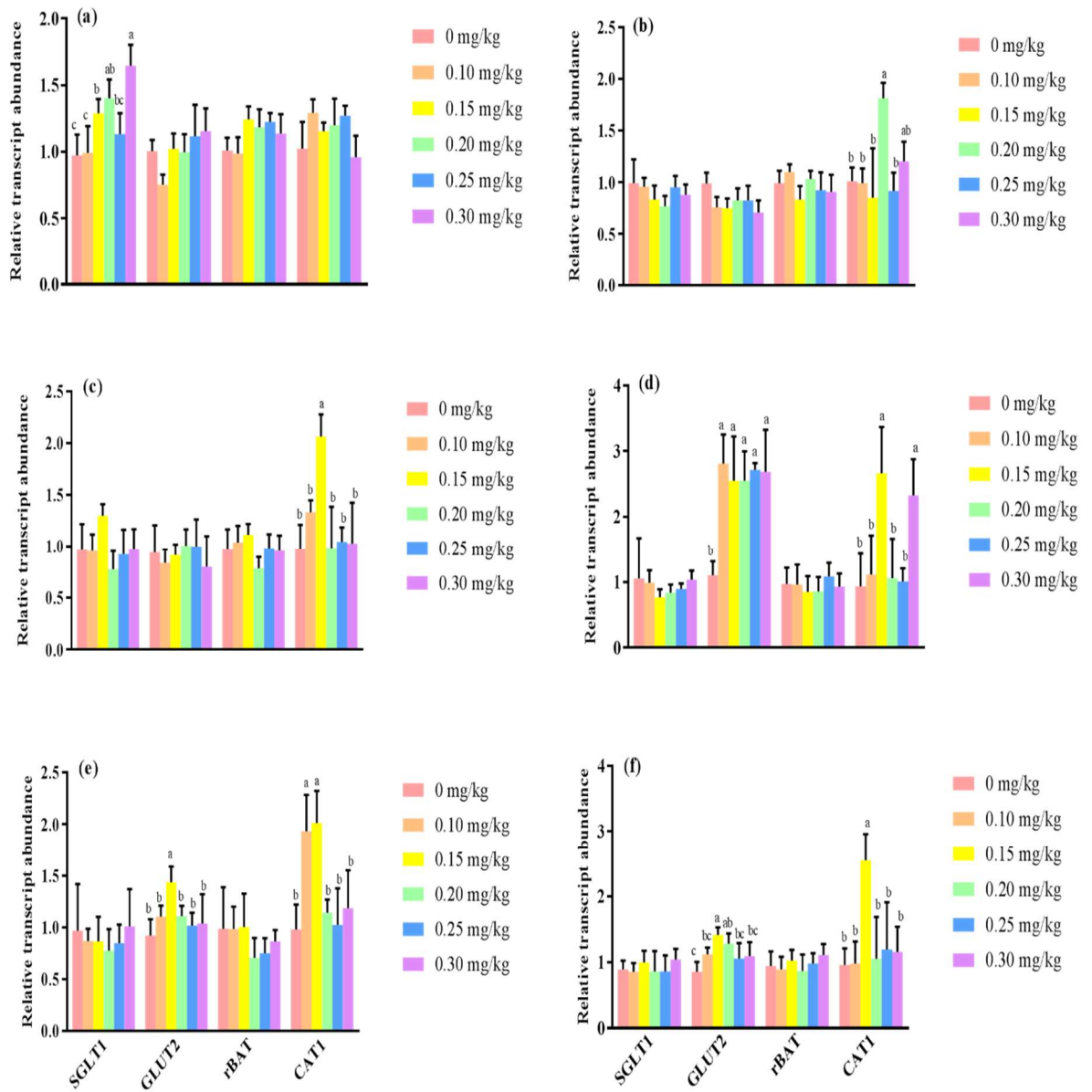


Figure 5.

Table 1. Effect of dietary chromium propionate on the organ index of broilers

Days	Parameters	Cr levels mg/kg						SEM	P Value
		0	0.10	0.15	0.20	0.25	0.30		
21	liver index	26.85	28.55	27.49	28.07	28.84	26.94	0.264	0.117
	Spleen index	0.79 ^{bc}	1.03 ^a	0.73 ^c	0.82 ^{bc}	0.92 ^{ab}	0.93 ^{ab}	0.029	0.021
	Heart index	5.26	5.74	5.44	5.52	5.68	5.59	0.057	0.213
	Thymus index	4.29 ^b	4.71 ^{ab}	4.71 ^{ab}	4.28 ^b	4.32 ^b	5.46 ^a	0.118	0.030
	Bursa index	1.66	1.63	1.78	1.84	2.02	1.82	0.051	0.312
	Liver index	22.48	21.36	22.97	22.15	22.16	24.19	0.386	0.448
42	Spleen index	1.41	1.14	1.19	1.25	1.34	1.15	0.039	0.313
	Heart index	4.06 ^b	4.06 ^b	4.60 ^a	3.59 ^c	4.15 ^b	4.07 ^b	0.075	0.002
	Thymus index	3.54 ^b	3.48 ^b	4.63 ^a	3.93 ^{ab}	3.23 ^b	4.43 ^a	0.128	0.002
	Bursa index	1.09	1.16	1.21	1.28	1.36	1.14	0.044	0.566

a, b, c Mean values within a row with different superscript letters were significantly different ($P < 0.05$). Organ index =organ weight g/kg body weight. 0mg/kg: (basal diet, with no chromium propionate supplementation); (b) 0.10mg/kg: (basal diet+ 0.10 mg/kg chromium propionate supplementation); (c) 0.15mg/kg: (basal diet+ 0.15 mg/kg chromium propionate supplementation); (d) 0.20mg/kg: (basal diet+ 0.20 mg/kg chromium propionate supplementation); (e) 0.25mg/kg: (basal diet+ 0.25 mg/kg chromium propionate supplementation); (b) 0.30mg/kg: (basal diet+ 0.30 mg/kg chromium propionate supplementation). Means with different superscripts were significantly different ($p < 0.05$). Data were presented as means \pm SE

Table 2. Effect of dietary chromium propionate on serum antibody titer against Newcastle Disease and Avian Influenza in broilers

Disease	Age	Cr levels (mg/kg)						SEM	P Value
		0	0.10	0.15	0.20	0.25	0.30		
Newcastle disease	Preimmune	6.75	6.75	6.00	6.00	7.50	7.00	1.42	0.867
	7 days after immunization	3.50 ^c	4.50 ^{abc}	5.00 ^a	4.75 ^{ab}	3.67 ^{bc}	4.00 ^{abc}	0.17	0.032
	14 days after immunization	6.75	6.50	6.25	6.25	5.75	5.75	0.18	0.575
	21 days after immunization	3.50 ^c	7.00 ^{ab}	7.25 ^a	8.00 ^a	5.00 ^{bc}	7.00 ^{ab}	0.397	0.001
	28 days after immunization	7.50 ^{bc}	6.25 ^c	9.25 ^a	9.00 ^a	8.00 ^{ab}	8.75 ^{ab}	0.265	0.001
H5 AI	21 days	8.50 ^{ab}	6.75 ^c	7.50 ^{bc}	8.75 ^a	7.25 ^c	7.00 ^c	0.20	0.002

a, b, c Mean values within a row with different superscript letters were significantly different ($P < 0.05$). 0mg/kg: (basal diet, with no chromium propionate supplementation); (b) 0.10mg/kg: (basal diet+ 0.10 mg/kg chromium propionate supplementation); (c) 0.15mg/kg: (basal diet+ 0.15 mg/kg chromium propionate supplementation); (d) 0.20mg/kg: (basal diet+ 0.20 mg/kg chromium propionate supplementation); (e) 0.25mg/kg: (basal diet+ 0.25 mg/kg chromium propionate supplementation); (b) 0.30mg/kg: (basal diet+ 0.30 mg/kg chromium propionate supplementation). Means with different superscripts were significantly different ($p < 0.05$). Data were presented as means \pm SE

Table 3. Effects of dietary chromium propionate on intestinal morphology of duodenum in broilers

Days	Parameters	Cr levels (mg/kg)						SEM	P Value
		0	0.10	0.15	0.20	0.25	0.30		
21	VH (μm)	3282.25	2878.00	3345.34	2965.79	3032.21	3198.09	68.273	0.298
	CD (μm)	161.96	177.83	171.84	193.96	164.38	165.42	4.357	0.287
	WT (μm)	460.33	396.34	435.42	425.17	411.42	414.96	9.297	0.482
	VH/CD	21.04	16.18	19.54	15.48	18.63	19.41	0.676	0.122
42	VH (μm)	3561.59	3123.96	3427.94	3645.17	3348.71	3176.62	99.952	0.635
	CD (μm)	25.957	23.73	17.90	29.70	14.44	20.59	4.750	0.475
	WT (μm)	515.21	504.96	526.95	494.55	512.63	476.63	12.099	0.915
	VH/CD	20.89	17.72	22.22	21.35	22.08	17.24	0.800	0.282

All values were non significant ($P < 0.05$). 0mg/kg: (basal diet, with no chromium propionate supplementation); (b) 0.10mg/kg: (basal diet+ 0.10 mg/kg chromium propionate supplementation); (c) 0.15mg/kg: (basal diet+ 0.15 mg/kg chromium propionate supplementation); (d) 0.20mg/kg: (basal diet+ 0.20 mg/kg chromium propionate supplementation); (e) 0.25mg/kg: (basal diet+ 0.25 mg/kg chromium propionate supplementation); (b) 0.30mg/kg: (basal diet+ 0.30 mg/kg chromium propionate supplementation). Means with different superscripts were significantly different ($p < 0.05$). Data were presented as means \pm SE; VH (Villus height), CD (Crypt depth), WT (Wall thickness)

Table 4. Effect of dietary chromium propionate on intestinal morphology of jejunum in broilers

Days	Parameters	Cr levels (mg/kg)						SEM	P Value
		0	0.10	0.15	0.20	0.25	0.30		
21	VH (μm)	2591.63	2117.16	2237.79	2111.59	2098.63	2451.00	82.222	0.405
	CD (μm)	159.33 ^{bc}	190.67 ^{ab}	197.25 ^a	193.25 ^{ab}	176.09 ^{abc}	143.25 ^c	5.843	0.023
	WT (μm)	407.79 ^b	391.71 ^b	522.88 ^a	395.09 ^b	423.54 ^b	446.88 ^{ab}	13.599	0.029
	VH/CD	16.82 ^a	11.07 ^b	11.60 ^b	11.16 ^b	11.91 ^b	17.16 ^a	0.760	0.014
42	VH (μm)	2511.17	2550.21	2144.67	2206.88	2228.13	2126.50	83.058	0.578
	CD (μm)	172.17	178.96	192.38	208.84	184.33	170.75	6.604	0.604
	WT (μm)	481.28	487.25	465.29	494.33	448.87	453.96	13.338	0.919
	VH/CD	15.15	14.54	11.58	11.04	12.19	12.52	0.666	0.478

a, b, c Mean values within a row with different superscript letters were significantly different ($P < 0.05$). 0mg/kg: (basal diet, with no chromium propionate supplementation); (b) 0.10mg/kg: (basal diet+ 0.10 mg/kg chromium propionate supplementation); (c) 0.15mg/kg: (basal diet+ 0.15 mg/kg chromium propionate supplementation); (d) 0.20mg/kg: (basal diet+ 0.20 mg/kg chromium propionate supplementation); (e) 0.25mg/kg: (basal diet+ 0.25 mg/kg chromium propionate supplementation); (b) 0.30mg/kg: (basal diet+ 0.30 mg/kg chromium propionate supplementation). Means with different superscripts were significantly different ($p < 0.05$). Data were presented as means \pm SE; VH (Villus height), CD (Crypt depth), WT (Wall thickness)

Table 5. Effect of dietary chromium propionate on intestinal morphology of ileum in broilers

Days	Parameters	Cr levels (mg/kg)						SEM	P Value
		0	0.10	0.15	0.20	0.25	0.30		
21	VH (μm)	1678.17	1424.21	1502.25	1588.79	1599.56	1510.54	58.405	0.880
	CD (μm)	189.75	162.92	183.62	187.04	152.33	183.04	4.545	0.116
	WT (μm)	530.96	490.75	488.71	512.50	469.94	448.17	16.297	0.779
	VH/CD	8.94	8.76	8.15	8.46	10.70	8.26	0.387	0.572
42	VH (μm)	1560.50	1776.75	1741.04	1730.17	1832.63	1793.56	61.922	0.945
	CD (μm)	192.92	162.58	178.84	166.06	182.00	166.83	6.096	0.811
	WT (μm)	621.00	483.00	548.71	541.50	534.96	527.94	25.735	0.886
	VH/CD	8.01	10.91	9.76	10.58	10.31	10.87	0.376	0.447

All values were non significantly ($P < 0.05$). 0mg/kg: (basal diet, with no chromium propionate supplementation); (b) 0.10mg/kg: (basal diet+ 0.10 mg/kg chromium propionate supplementation); (c) 0.15mg/kg: (basal diet+ 0.15 mg/kg chromium propionate supplementation); (d) 0.20mg/kg: (basal diet+ 0.20 mg/kg chromium propionate supplementation); (e) 0.25mg/kg: (basal diet+ 0.25 mg/kg chromium propionate supplementation); (b) 0.30mg/kg: (basal diet+ 0.30 mg/kg chromium propionate supplementation). Means with different superscripts were significantly different ($p < 0.05$). Data were presented as means \pm SE; VH (Villus height), CD (Crypt depth), WT (Wall thickness)

Table 6. Feed composition offered to broilers during experiment

Ingredients	Starter (%) (1-21days)	Finisher (%) (22-42 days)
Corn	52.24	55.69
Soybean meal	32.17	30.1
Cotton seed meal	2	3
Corn Gluten 60%	4	4
Rapeseed meal	3	3
Calcium	2.5	1.5
Phosphate (powder)	1.83	0.12
Lysine sulphate 70%	0.77	1.06
Salt	0.3	0.36
DL-methionine	0.28	0.30
*Premix	0.3	0.3
Threonine	0.17	0.24
Zeolite powder	0.17	0.15
Choline chloride (50%)	0.15	0.1
Tryptophan	0.12	0.08
Total	100	100
Chemical Composition		
Crude Protein % (CP)	21.2	19
Calcium %	0.96	0.85
Phosphorous %	0.70	0.58
Lysine %	1.294	1.272
Methionine %	0.603	0.651
Metabolic Energy kcal/kg	2930	3050

*the premix added in one kg of the diet: Vit. A, 250000 I.U; Vit. D3, 50000 I.U.; Vit. E, 600 I.U; Vit. K3, 40 mg; Vit. B1, 40 mg; Vit. B2, 120mg; B5, 240 mg; Vit.B12, 0.50 mg; Niacin, 1 g; Biotin, 0.65 mg; Folic acid, 25 mg; Zn, 75 mg; Mn, 80 mg; Fe, 80 mg; Cu, 10 mg; I, 0.40 mg; Se, 0.30 mg.

Table 7. The sequences of primers used in quantitative real-time PCR Target gene Primer Sequence (5'–3')

Target Gene	Primer	Sequence	GenBank Accession No.
Beta-Actin	Forward	ATTGTCCACCGCAAATGCTTC	NM_205518.1
	Reverse	AAATAAAGCCATGCCAATCTCGTC	
SGLT1	Forward	AGCATTTTCAGCATGGTGTGTCTTC	XM_415247
	Reverse	GATGCTCCTATCTCAGGGCAGTTC	
GLUT2	Forward	CACACTATGGGCGCATGCT	XM_205209.1
	Reverse	ATTGTCCCTGGAGGTGTTGGTG	
rBAT	Forward	CCCGCCGTTCAACAAGAG	XM_426125
	Reverse	AATTAAATCCATCGACTCCTTTGC	
CAT1	Forward	CAAGAGGAAAACCTCCAGTAATTGCA	NC_003424.3
	Reverse	AAGTCGAAGAGGAAGGCCATAA	

Chromium propionate Cr^{3+}



Broiler chickens

