



HAL
open science

Gelation of cellulose-NaOH solutions in the presence of cellulose fibers

Oona Korhonen, Tatiana Budtova

► **To cite this version:**

Oona Korhonen, Tatiana Budtova. Gelation of cellulose-NaOH solutions in the presence of cellulose fibers. *Carbohydrate Polymers*, 2019, 224, pp.115152. 10.1016/j.carbpol.2019.115152 . hal-02419087

HAL Id: hal-02419087

<https://hal.science/hal-02419087>

Submitted on 20 Jul 2022

HAL is a multi-disciplinary open access archive for the deposit and dissemination of scientific research documents, whether they are published or not. The documents may come from teaching and research institutions in France or abroad, or from public or private research centers.

L'archive ouverte pluridisciplinaire **HAL**, est destinée au dépôt et à la diffusion de documents scientifiques de niveau recherche, publiés ou non, émanant des établissements d'enseignement et de recherche français ou étrangers, des laboratoires publics ou privés.



Distributed under a Creative Commons Attribution - NonCommercial 4.0 International License

1 *Submitted to Carbohydrate Polymers June 3d, 2019*

2 *Revised July 26th, 2019*

3

4

5 **Gelation of cellulose-NaOH solutions in the presence of cellulose fibers**

6

7

8 Oona Korhonen¹ and Tatiana Budtova^{1,2*}

9

10

11

12 ¹ Aalto University, School of Chemical Engineering, Department of Bioproducts and
13 Biosystems, P.O. Box 16300, 00076 Aalto, Finland

14 ² MINES ParisTech, PSL Research University, CEMEF – Center for materials forming,
15 UMR CNRS 7635, CS 10207, 06904 Sophia Antipolis, France

16

17 Corresponding author: Tatiana Budtova

18 Tatiana.Budtova@mines-paristech.fr

19 Tatiana.Budtova@aalto.fi

20

21

22

23 **Highlights**

- 24 • Gelation of cellulose-NaOH solutions in the presence of fibers was studied
- 25 • Added cellulose fibers and non-dissolved cellulose fraction accelerate gelation
- 26 • Modulus at gel point is higher for solutions with cellulose fibers
- 27 • Interactions between dissolved and non-dissolved cellulose were suggested
- 28 • Inert fibers do not influence gelation of cellulose solutions

29

30 **Abstract**

31 It is well known that when cellulose is dissolved in aqueous NaOH-based solvent, solutions
32 are gelling with increasing time and temperature. The goal of this work was to understand if
33 the presence of non-dissolved cellulose fibers influences gelation behavior of the whole
34 system. One of the motivations is to control gelation when making all-cellulose composites
35 with short fibers dispersed in cellulose-NaOH-water solutions. Gelation kinetics of
36 cellulose(dissolving pulp)-NaOH-water solutions with added softwood kraft fibers were
37 investigated using dynamic rheology. Fiber concentration, dissolving pulp degree of
38 polymerization and solution temperature were varied. In all cases the addition of kraft fibers
39 accelerate gelation and increase modulus at gel point while the presence of “inert” carbon
40 fibers does not influence solution gelation kinetics. It was suggested that acceleration of
41 gelation and reinforcement of cellulose gels is due to the interactions between dissolved and
42 non-dissolved cellulose.

43

44 **Key words:**

45 All-cellulose composites; solutions; fibers; suspensions; rheology

46 **1. Introduction**

47 Cellulose is a natural polymer extracted mainly from plants and wood and it is renewable and
48 biodegradable. There are different ways to make cellulose-based materials: either to use
49 natural fibers as is, or dissolve cellulose, or derivatise it prior to processing. Common organic
50 solvents cannot dissolve cellulose and thus specific solvents must be utilized. Mostly used are
51 N-methylmorpholine-N-oxide (NMMO) monohydrate (Fink, Weigel, Purz & Ganster, 2001),
52 LiCl/dimethylacetamide (McCormick & Lichatowich, 1979) or ionic liquids (Cao et al.,
53 2009) of which only NMMO monohydrate is currently applied for the commercial production
54 of cellulose fibers.

55 Cellulose can also be dissolved in aqueous 6-9 wt% NaOH (Davidson, 1934; Budtova &
56 Navard, 2016), which provides a commercially available low cost solvent, with existing
57 recycling methods used by pulping industry. However, this solvent has several drawbacks as
58 cellulose dissolution must be performed at subzero temperatures, it has low dissolution
59 capacity limited by cellulose degree of polymerization (DP) and concentration (Kamide, K.,
60 Okajima, K., & Kowsaka, K. 1992; Egal, Budtova & Navard, 2007), and irreversible gelation
61 of cellulose-NaOH solutions occurs with time and temperature increase (Roy, Budtova &
62 Navard, 2003). Gelation can be slowed down by utilizing additives such as urea, thiourea or
63 ZnO (Cai & Zhang, 2006; Liu, Budtova & Navard, 2011; Ruan, Lue & Zhang, 2008; Weng,
64 Zhang, Ruan, Shi & Xu, 2004; Zhou & Zhang, 2000). In all cases gelation is affected by
65 multiple parameters including time, temperature and cellulose concentration in the solution
66 (Budtova & Navard, 2016).

67 Limited dissolution capacity (theoretical maximum of 8 wt% cellulose in 8 wt% NaOH-
68 solution) (Egal, Budtova & Navard, 2007) and solution gelation are the major issues
69 preventing using 6-9 wt% NaOH-water for classical cellulose processing, i.e. making films or

70 textile fibers. However, these drawbacks are not causing problems when making all-cellulose
71 composites as in this case complete cellulose dissolution is not required (Yang et al. 2010;
72 Nadhan et al. 2012; Korhonen, Sawada & Budtova, 2019; Labidi, Korhonen, Zrida,
73 Hamzaoui & Budtova, 2019). All-cellulose composites are based on the principle of single-
74 polymer composites, where the matrix and the reinforcing fibers are made of the same matter,
75 thus avoiding using compatibilizers and simplifying recycling (Capiati & Porter, 1975; Ward
76 & Hine, 1997). All-cellulose composites can be produced from different raw materials via
77 dissolution-coagulation-drying route (Nishino, Matsuda & Hirao, 2004; Huber et al., 2012).
78 Processing can be divided into two main approaches: *i*) “long-fiber” approach consisting of
79 long fibers making a continuous phase, aligned or assembled into a fabric or pulp sheet and
80 “glued together” due to the partial dissolution of fiber surfaces (Abbot & Bismarck 2010;
81 Duchemin, Newman, & Staiger, 2009; Gindl & Keckes, 2005; Hildebrandt, Piltonen,
82 Valkama & Illikainen, 2017; Piltonen et al. 2016; Sirviö, Visanko & Hildebrandt, 2017) and
83 *ii*) “short-fiber” approach based on dispersing short fibers in cellulose solution (Ouajai &
84 Shanks, 2009; Yang, Le & Zhang, 2010; Nadhan, Rajulu, Li, Jie & Zhang, 2012; Korhonen,
85 Sawada & Budtova, 2019; Labidi, Korhonen, Zrida, Hamzaoui & Budtova, 2019).

86 Aqueous NaOH solvent can be easily used for making all-cellulose composites (Yang et al.
87 2010; Nadhan et al. 2012; Korhonen et al. 2019; Labidi et al. 2019). If using short-fiber
88 dispersion approach, the system is no longer cellulose-NaOH solution, but a suspension of
89 non-dissolved fibers dispersed in such solution. How the presence of non-dissolved fibers
90 influence suspension gelation? It is known that the addition of natural fibers to thermoplastic
91 polymers strongly modify the rheological properties of molten composites (Sojoudiasli,
92 Heuzey & Carreau, 2014; Abdennadher, Vincent & Budtova, 2016). However, nothing is
93 known on how non-dissolved fibers are affecting gelation of cellulose-NaOH-water solutions,
94 which is crucial for the production of all-cellulose composites.

95 The goal of our work is to understand if the presence of non-dissolved cellulose fibers
96 influences gelation behavior of a suspension of short cellulose fibers dispersed in cellulose-
97 NaOH solution. Dynamic rheology was used to trace gelation time and modulus at gel point.
98 Dissolving pulp of DP 320 and 640 was used to make solutions, and kraft fibers were added
99 at different concentrations. A special care was taken to ensure that kraft fiber concentration
100 remained below the percolation concentration, which was determined from fiber size
101 distribution. Similar to our previous work on all-cellulose composites (Korhonen et al. 2019),
102 we considered the dissolution power of the solvent, i.e. the presence of non-dissolved fraction
103 in solution of cellulose of higher DP. As a proof of concept, we used inert carbon fibers
104 dispersed in cellulose solution to demonstrate that it is the interactions between dissolved
105 cellulose and non-dissolved cellulose fibers which accelerate gelation and lead to a formation
106 of a strong network.

107

108 **2. Materials and Methods**

109 **2.1. Materials**

110 Bleached birch dissolving pulp and softwood kraft fibers (crystallinity of kraft fibers is 42%,
111 see Korhonen et al. 2019 for details) were kindly provided by Stora Enso Oyj as air-dry
112 sheets and were disintegrated by a laboratory mill. NaOH flakes (analytical grade, purchased
113 from Fischer Scientific) was dissolved in distilled water (8 wt%) and used as cellulose
114 solvent. Commercial carbon fibers from pyrolysed polyacrylonitrile fibers were kindly
115 donated by Deakin University, Australia, as continuous filament, and they were cut to match
116 the size of the kraft fibers. Sulphuric acid (95-97%, EMSURE[®] ISO) was purchased from
117 Merck and diluted with distilled water.

118

119 **2.2. Methods**

120 2.2.1. Pulp characterization and acid hydrolysis

121 The composition of all pulps was determined according to the analytical method NREL/TP-
122 510-42618. Monosaccharides were analyzed via high-performance anion exchange
123 chromatography with pulse amperometric detection (HPAEC-PAD) in a Dionex ICS-3000
124 column and carbohydrates were determined according to Janson (1970). Acid soluble lignin
125 content was analyzed via UV-VIS spectrophotometer (UV-2550, Shimadzu) and no traces of
126 non-soluble lignin were detected.

127 The degree of polymerization (DP) of all pulps was determined via intrinsic viscosity based
128 on cellulose dissolution in cupriethylenediamine (CED), according to the standard SCAN-
129 CM 15:88.

130 Since the solubility of high DP cellulose in NaOH-water is low (Kamide, Okajima &
131 Kowsaka, 1992; Budtova & Navard, 2016; Korhonen et al. 2019), the dissolving pulp was
132 hydrolyzed to decrease the initial DP of 1100 to DP 640 and 320. Acid hydrolysis was
133 conducted at 3% consistency for 60 minutes via sulphuric acid with concentrations 0.1 M and
134 0.6 M at controlled temperature of 82 °C and 88 °C, respectively. Hydrolysis occurred under
135 overhead mixing (125 rpm) and samples were washed with deionized water until neutral pH
136 was reached. Samples were air-dried and the gravimetric yield for both DPs was $98 \pm 1 \%$.

137

138 2.2.2. Determination of size distributions of kraft fibers, carbon fibers and non-dissolved
139 solids

140 Fiber size distribution of softwood kraft fibers was determined in triplicate via FiberLab™
141 (Metso Automatization) device.

142 The size distribution of carbon fibers was determined by dispersing them in acetone; their
143 length and width were obtained from optical microscopy images (Olympus SZX10 equipped
144 with Olympus DP74 camera, magnification $\times 0.8$, software Olympus CellSens and LEICA
145 DM 750 with camera LEICA ICC550 HD, magnification $\times 20$, software LAS EZ,
146 respectively). The reason of using different microscopes was very different magnifications
147 needed to capture dimensions of fibers of very high aspect ratio. The mean values were
148 calculated as arithmetic averages.

149 Cellulose solution of DP 640 in 8 wt% NaOH-water contained non-dissolved solids, and their
150 size distribution was determined from optical microscopy images as described in Korhonen et
151 al. (2019). Briefly, the solution was diluted with 8 wt% NaOH-water and at least 80
152 fragments per solution were analyzed; their mean sizes were calculated as arithmetic
153 averages.

154

155 2.2.3. Determination of the fraction of non-dissolved solids in cellulose-NaOH-solutions

156 The amount of non-dissolved solids in the solution was determined as follows (for more
157 details see Korhonen et al., 2019). 5 wt% of pulp with DP 320 or 640 was dissolved in 8 wt%
158 NaOH in the same way as for making samples for the rheological study, i.e. at $-7\text{ }^{\circ}\text{C}$ for 2 h
159 under overhead mixing (300 rpm). The non-dissolved fraction was separated from the
160 dissolved phase via centrifugation (15 minutes, 11 000 rpm, Eppendorf Centrifuge 5804R),
161 washed and dried. The fraction of non-dissolved solids in the solution was calculated with
162 equation 1, where $m(\textit{dissolving pulp})$ is the oven-dried weight of the pulp prior to dissolution
163 and $m(\textit{non-dissolved})$ is oven-dried weight of the separated non-dissolved solids:

$$164 \quad \textit{Solid fraction, \%} = \frac{m(\textit{non-dissolved})}{m(\textit{dissolving pulp})} \times 100\% \quad (1)$$

165 Solid fraction is 0 % when there is no residue (implying complete dissolution) and 100 % is
166 the case of no dissolution.

167

168 2.2.4. Sample preparation for the rheological study

169 5 wt% of acid hydrolyzed pulp of DP 320 or DP 640 was dissolved in 8 wt% NaOH at – 7 °C
170 with overhead mixer (300 rpm). After 2 h of mixing, 0%, 0.25%, 0.5% or 1% of kraft fibers
171 or 0%, 0.25% or 0.5% of carbon fibers were added; mixing rate was reduced to 125 rpm to
172 minimize the amount of air bubbles. Fibers and cellulose solutions were mixed together for
173 15 min and then stored at 5 °C for 30 min prior to rheological measurement. Additionally,
174 solutions of pulp DP 320 with cellulose concentrations 5 wt%, 5.25 wt%, 5.5 wt% and 6 wt%
175 were prepared without any added fibers. We will call “cellulose solutions” the systems when
176 dissolving pulp of DP 320 or 640 is dissolved in NaOH-water in order to distinguish them
177 from the cases of “cellulose suspensions” when kraft or carbon fibers are added.

178

179 2.2.5. Concentrations of cellulose in solutions and suspensions

180 Because of the presence of non-dissolved fractions in cellulose solutions, several
181 concentrations of cellulose and of “solids” in suspensions have to be considered in order to
182 understand their rheological properties. First, total cellulose concentration describes the
183 overall concentration of all cellulose in the system and is calculated according to the equation
184 2, where $m(kraft)$ is the oven-dry weight of added kraft fibers and $m(NaOH)$ is the weight of
185 solvent.

$$186 \quad Total\ cellulose\ \% = \frac{m(dissolving\ pulp)+m(kraft)}{m(dissolving\ pulp)+m(kraft)+m(NaOH)} \times 100\% \quad (2)$$

187 The second concentration to consider is total solids concentration (eq.3), which shows the
188 amount of all matter dispersed in cellulose solution, i.e. non-dissolved fraction and added
189 fibers $m(\text{added fibers})$ (kraft or carbon):

$$190 \quad \text{Total solids \%} = \frac{m(\text{non-dissolved})+m(\text{added fibers})}{m(\text{dissolving pulp})+m(\text{added fibers})+m(\text{NaOH})} \times 100\% \quad (3)$$

191 The third concentration is simply the amount of added fibers, either kraft or carbon. It is
192 calculated according to the equation 4:

$$193 \quad \text{Added fibers \%} = \frac{m(\text{added fibers})}{m(\text{dissolving pulp})+m(\text{added fibers})+m(\text{NaOH})} \times 100\% \quad (4)$$

194 Table 1 shows these concentrations in all samples studied. The nomenclature is as follows:
195 first, dissolving pulp DP, then the type of fiber added (“K” and “C” stand for added kraft and
196 carbon fibers, respectively) and finally, the concentration of added fibers.

197 Table 1. List of samples studied

Sample set	Sample ID	Dissolving pulp DP	Total cellulose, wt %	Total solids, wt %	Added fibers, wt %	Solution temperature, °C	
Kraft fibers added	DP(320)K0.00%	320	5	0.20	0.00	5	
						10	
						15	
	DP(320)K0.25%		5.25	0.45	0.25	5	
						10	
						15	
	DP(320)K0.50%		5.5	0.70	0.50	5	
						10	
						15	
	DP(320)K1.00%		6.0	1.20	1.00	5	
	DP(640)K0.00%		640	5	1.70	0.00	5
							10

						15	198
	DP(640)K0.25%		5.25	1.94	0.25	5	199
						10	200
						15	201
	DP(640)K0.50%		5.5	2.19	0.50	5	202
						10	203
						15	
	DP(640)K1.00%		6.0	2.66	1.00	10	204
Cellulose solutions of various concentrations	DP(320)5.25%	320	5.25	0.21	0	5	205
	DP(320)5.5%		5.5	0.22	0	5	206
	DP(320)6%		6	0.24	0	5	207
Carbon fibers added	DP(320)C0.25%	320	5	0.44	0.25	5	
	DP(320)C0.5%		5	0.70	0.5	5	208

210 2.2.6. Rheological measurements

211 The rheological properties of solutions and suspensions were measured with GEMINI
212 Advanced rheometer (Bohlin instrument) using Bohlin software. Rheometer was equipped
213 with plate-plate geometry and Peltier temperature control system. The gap was set to 1.5 mm
214 to take into account the presence of added fibers. Strain and frequency were set for all
215 measurements at 5% and 2 Hz, respectively, to ensure the linear visco-elastic regime. Storage
216 (G') and loss (G'') moduli were studied at 5 °C, 10 °C and 15 °C. The experimental errors in
217 determination of gel point were less than 10%.

218

219 **3. Results**

220 **3.1. Characterization of pulps and cellulose solutions**

221 All pulps consisted mostly of cellulose and hemicelluloses. Acid hydrolysis did not affect the
222 composition and all dissolving pulps (including the initial pulp with DP 1100) contained 92%
223 cellulose, 7% hemicelluloses and < 1% acid soluble lignin. Kraft fibers were of DP 2550 and
224 contained 80% cellulose, 19% hemicelluloses and < 1% acid soluble lignin.

225 The fraction of solids present in 5 wt% solutions of dissolving pulps of DP 320 and 640 was
226 determined according to eq.1 (see section 2.2.3). The results are shown in Table 1. In the case
227 of DP 320, practically all of the 5 wt% cellulose was dissolved and very few non-dissolved
228 fragments remained. However, the solution with DP 640 contains a significant amount of
229 non-dissolved solids, since only 3.3 wt% of pulp is actually dissolved (Table 2).

230

231 Table 2. Characteristics of neat 5 wt% cellulose-NaOH solutions for DP 320 and 640: solid
232 fraction (eq. 1) and concentration of dissolved and non-dissolved cellulose.

	DP 320	DP 640
Solid fraction, wt%	4	34
Concentration of dissolved cellulose in solution, wt %	4.8	3.3
Concentration of non-dissolved cellulose in solution, wt%	0.2	1.7

233

234 **3.2. Analysis of fiber sizes: non-dissolved fragments, kraft fibers and carbon fibers**

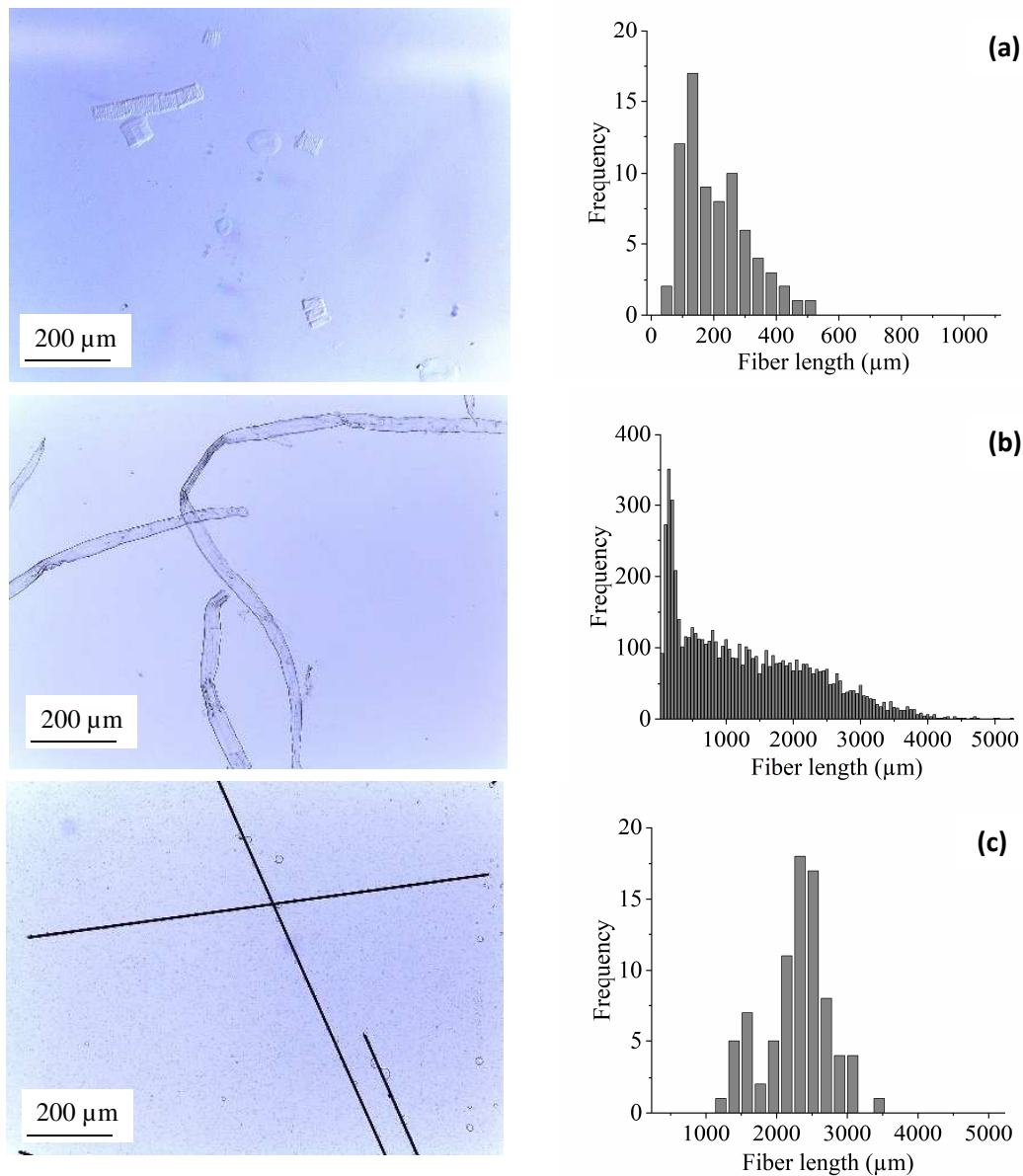
235 Figure 1 illustrates all solids in cellulose solutions and suspensions and shows their length
236 distributions, the mean values are summarized in Table S1. Width and aspect ratio
237 distributions are shown in the Supporting information (Fig. S1). Non-dissolved fraction in
238 solutions of DP 640 contains swollen particle-like fibers and their fragments, with low aspect
239 ratio around 4. Man-made carbon fibers are straight, rigid, have uniform width and high
240 aspect ratio around 270, whereas kraft fibers are long and flexible with aspect ratio around
241 50.

242

243

244

245



246

247 Figure 1. Illustration of non-dissolved fraction in 5 wt% cellulose (DP 640)-NaOH-water
 248 solution (a), softwood kraft fiber (b) and carbon fiber (c) together with their length
 249 distributions

250

251 Fiber length and its distribution strongly depend on the type of the fiber. Non-dissolved
 252 fragments in solution of DP 640 are short with length of $185 \mu\text{m} (\pm 105 \mu\text{m})$ while kraft and
 253 carbon fibers are long, with mean length of $1.3 \text{ mm} (\pm 0.02 \text{ mm})$ and $2.2 \text{ mm} (\pm 0.5 \text{ mm})$,
 254 respectively (Figure 1). Length distribution of natural softwood fibers is much wider

255 compared to the carbon fibers. Additionally, carbon fibers are thinner, only 8 μm wide,
256 whereas kraft fibers have average width of 26 μm and non-dissolved fibers in solutions of DP
257 640 are 52 μm wide as the latter are swollen. The percolation concentration, which can be
258 roughly estimated as the inverse value of fiber aspect ratio, is around 2 and 0.4 vol% for kraft
259 and carbon fibers, respectively. The weight % based percolation concentration is around 3
260 and 0.72 wt% for kraft and carbon fibers, respectively, and it is estimated taking solvent
261 density equal to water and densities of kraft and carbon fibers equal to 1.5 g/cm^3 (Sixta,
262 Potthast & Krottschek, 2006) and 1.8 g/cm^3 (Minus & Kumar, 2005), respectively. It is
263 important to note that all kraft fiber suspensions are thus below fiber percolation
264 concentration. This choice was made to ensure $G' < G''$ at the beginning of the rheological
265 experiment, to be able to trace gelation of cellulose solutions in time.

266

267 **3.3. Rheological properties**

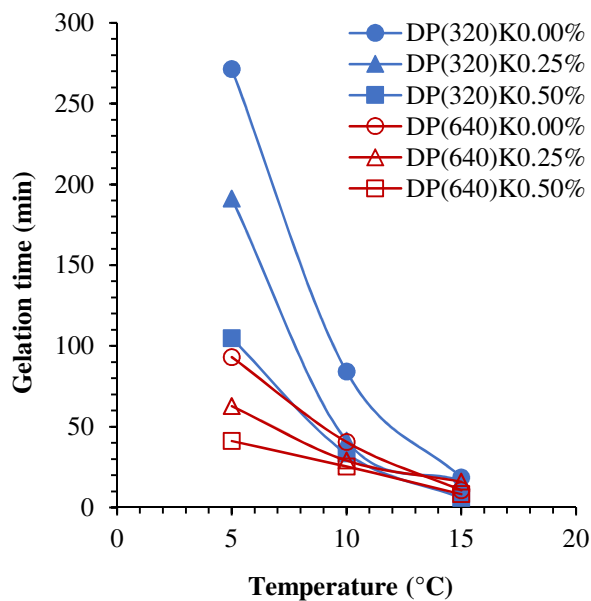
268 The influence of added fibers on the kinetics of cellulose solutions' and suspensions' gelation
269 was studied following the evolution of storage (G') and loss (G'') moduli as a function of
270 time at different fiber concentrations, for two dissolved cellulose DP, and at various
271 temperatures. Kraft fibers are of very high DP and in the conditions they were added and
272 mixed with cellulose solution fibers did not dissolve and even did not swell.

273 Gel point was taken, in the first approximation, as crossover of G' and G'' . At short times, G'
274 is lower than G'' indicating that the system is more viscous than elastic and thus has liquid-
275 like properties. Over time both moduli increase and G' overcomes G'' showing that the
276 system is more elastic (or solid-like). According to Winter and Chambon gelation theory
277 (1986), $G' \sim \omega^a$ and $G'' \sim \omega^b$, where ω is frequency, and the gel point is reached when $a = b =$
278 0.5. However, there are several complications that do not allow direct application of gelation

279 theory to our system. First, contrary to classical polymer solutions, cellulose is not
280 molecularly dispersed in NaOH-water solvent (Lu, Liu, Zhang & Potthast 2011). Second,
281 gelation of cellulose-NaOH-water solutions is accompanied by micro-phase separation
282 (Gavillon & Budtova 2008). Finally, the systems studied here are suspensions of fibers
283 dispersed in solution. In the following, for simplicity, we will call “gelation” and “gel point”
284 the state of the system when $G' = G''$. The examples of G' and G'' evolution in time at a
285 given temperature are shown in Supporting information (Fig. S2).

286 Figure 2 shows that gelation of all cellulose solutions and suspensions occurs faster with
287 increasing temperature, which is well in line with results reported previously (Roy et al.,
288 2003). The reason is that with the increase of temperature solvent thermodynamic quality
289 decreases which leads to the preferential intra- and intermolecular cellulose-cellulose
290 interactions inducing gelation in semi-dilute solutions (Budtova & Navard, 2016). Increasing
291 concentration of kraft fibers accelerates gelation as well. For example, by adding 0.5 wt% of
292 kraft fibers to cellulose(DP 320)-NaOH solution, gelation time at 5 °C decreases from 271
293 minutes without fibers to 105 minutes with kraft. Similar decrease in gelation time is
294 observed for DP 640 solution: the addition of 0.5 wt% fibers leads to a drop of gelation time
295 from 93 minutes without fibers to 41 minutes.

296



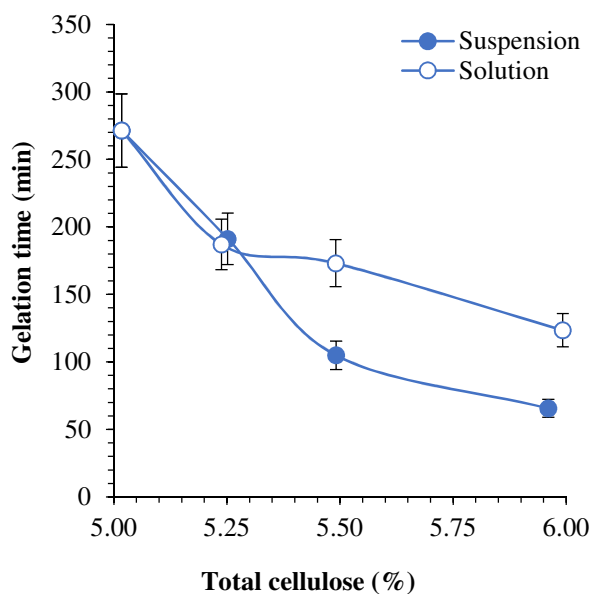
297

298 Figure 2. Effect of temperature and added kraft fiber concentration on gelation time. Lines
 299 are to guide the eye. The errors in gelation time are less than 10%, but are not shown in order
 300 not to overload the graph.

301

302 It is known that increasing cellulose concentration accelerates gelation (Roy et al., 2003;
 303 Gavillon & Budtova, 2008) since higher concentration of macromolecules in the solution
 304 leads to a higher probability of the formation of a network. Thus the next step was to
 305 understand if the added kraft fibers have a special role in accelerating gelation. Gelation
 306 kinetics of several cellulose-NaOH solutions with varying concentration of DP 320 pulp was
 307 investigated and compared with that of suspensions of the same total cellulose concentration.
 308 Figure 3 shows that gelation accelerates (decrease of gelation time) with increasing cellulose
 309 concentration, as expected (Roy et al., 2003; Gavillon & Budtova, 2008), but this
 310 phenomenon is even stronger in the presence of added kraft fibers. For example, when the
 311 total cellulose concentration is 6 wt%, suspension with added fibers is gelling in 66 minutes
 312 whereas gelation of the solution is twice longer.

313



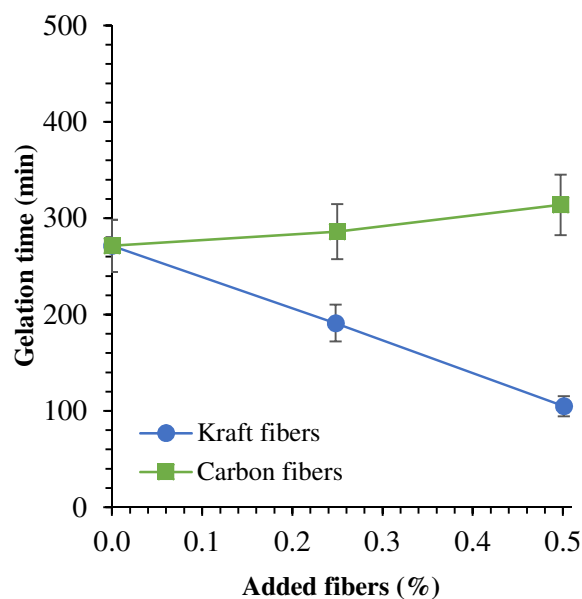
314

315 Figure 3. Gelation time at 5°C as a function of total cellulose concentration for cellulose(DP
 316 320)-NaOH-water solutions and 5 wt% cellulose(DP 320)-NaOH-water suspensions with
 317 added kraft fibers. Lines are to guide the eye.

318

319 For the further understanding of the possible interactions during gelation between cellulose
 320 dissolved in 8 wt% NaOH-water and added fibers, a series of suspensions with “inert” fibers
 321 (towards cellulose and NaOH-water) were prepared. Carbon fibers were selected for this
 322 purpose, and gelation kinetics of their suspensions in 5 wt% cellulose(DP 320)-NaOH-water
 323 was investigated and compared with the corresponding suspensions with added kraft fibers
 324 (Figure 4). Increasing carbon fiber content has practically no effect on gelation kinetics of
 325 cellulose-NaOH solutions **despite that carbon fiber percolation concentration is lower than**
 326 **that of kraft fibers, and thus the addition of carbon fibers might be expected to have stronger**
 327 **influence on gelation.** We can thus conclude that it is the interactions between dissolved
 328 cellulose and added cellulose fibers in suspension which accelerate gelation of cellulose-
 329 NaOH systems.

330



331

332 Figure 4. Gelation time at 5 °C as a function of added fiber's concentration for suspensions
 333 with carbon or kraft fibers added to 5 wt%cellulose(DP 320)-NaOH-water.

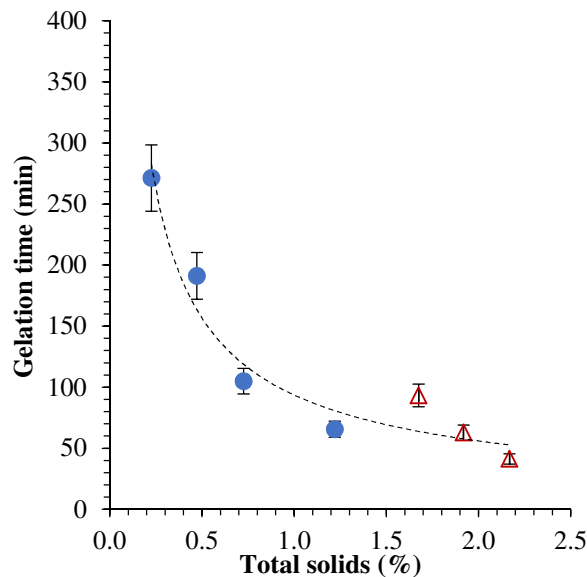
334

335 4. Discussion

336 The results presented above show that the increase in the concentration of added kraft fibers
 337 and of total cellulose concentration accelerate gelation of cellulose-NaOH-water suspensions.
 338 Based on these experimental results we will demonstrate the importance of considering non-
 339 dissolved fragments (or "solid fraction", eq. 1) originating from the incomplete dissolution in
 340 the case of the pulp of DP 640.

341 Figure 2 demonstrates a strong influence of the DP of dissolved cellulose: at the same
 342 temperature and kraft fiber concentration, higher DP provokes quicker gelation. This is also
 343 the case when no kraft fiber is added, which is somehow surprising as solution of DP 640
 344 contains lower dissolved cellulose (3.3 wt%) compared to the samples with DP 320 (4.8
 345 wt%). This result indicates that non-dissolved fraction must also be considered as
 346 contributing to gelation. An example of the influence of total solid content, which includes
 347 both non-dissolved fraction and added kraft fiber (eq. 3), is presented in Figure 5. The results

348 show that gelation occurs faster for samples with higher total solids content whatever is their
349 “origin”. The exponential fit shown in Figure 5 is very rough and does not take into account
350 the DP of dissolved cellulose; what we want to show here is that non-dissolved fraction also
351 contributes to solution and suspension gelation.



352

353 Figure 5. Effect of total solids concentration on gelation time at 5°C. Dashed line corresponds
354 to the power law approximation $y = 93.68x^{-0.741}$

355

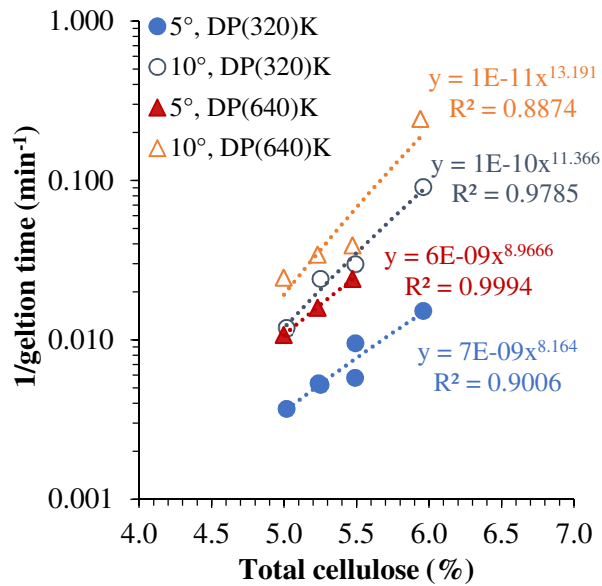
356 It is interesting to compare the obtained trends with those known in literature for similar
357 systems. While all literature on cellulose dissolved in NaOH-water based solvent, with or
358 without additives (ZnO, urea, thiourea or both), agrees that gelation time decreases with
359 temperature increase as shown in Figure 2 (Roy et al. 2003; Cai & Zhang, 2006; Gavillon &
360 Budtova, 2008; Liu et al., 2011; Pereira et al., 2018), not much is known about the influence
361 of cellulose concentration on gelation process and nothing is reported about the role of
362 “solids”.

363 To the best of our knowledge only one publication studied the influence of the presence of
364 cellulose fibers on the rheological properties of cellulose-NaOH solutions; the fibers were
365 microfibrillated cellulose (MFC) and ZnO was used to delay gelation (Saarikoski, Rissanen
366 & Seppälä 2015). Authors focused on the comparison of the flow and visco-elastic properties
367 of MFC dispersed in water and MFC dispersed in cellulose-NaOH-ZnO-water solution.
368 Gelation was not considered despite that in the conditions used cellulose chains' aggregation
369 could have started. Surprisingly, it was reported that at low MFC concentrations the elastic
370 modulus of MFC-cellulose-NaOH-ZnO-water suspension was lower than viscous modulus
371 indicating liquid-like behavior, and both being lower than those of MFC-water system. On
372 the contrary, MFC-water showed gel-like behavior indicating that MFC is above the
373 percolation concentration. With the increase of MFC concentration above a certain threshold
374 MFC-cellulose-NaOH-ZnO-water suspension showed gel-like behavior with elastic modulus
375 becoming much higher than that of MFC-water (Saarikoski et al., 2015). Authors suggested a
376 synergy between MFC and dissolved cellulose (Saarikoski et al., 2015).

377 Polymer concentration was shown to have an effect on gelation time by Ross-Murphy (1991)
378 who suggested a power-law dependence of the inverse gelation time as a function of
379 concentration for the case of gelling carrageenan solution. This trend was confirmed for
380 cellulose-NaOH-ZnO-water solutions (Liu et al., 2011). The decrease of gelation time with
381 the increase of polymer concentration is due to higher number of potential junctions that can
382 be formed since chains are closer to each other. The inverse gelation time as a function of
383 total cellulose concentration (eq. 2) is plotted in Figure 6 for all suspensions studied and
384 approximated with power laws for each temperature and cellulose DP showing that higher
385 temperature and DP results in quicker gelation. The inverse gelation time fits reasonably well
386 power-law cellulose concentration dependence for each case, with exponents varying from 8

387 to 13. Lower exponents were obtained for cellulose-NaOH-ZnO-water solutions, from 7 to 11
 388 (Liu et al., 2011). This again confirms that “solids” accelerate the gelation of suspensions.

389



390

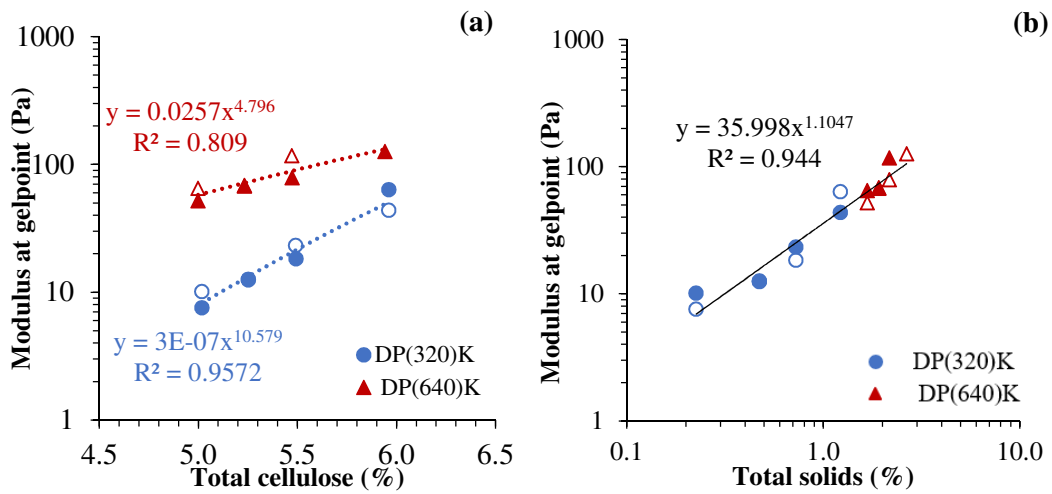
391 Figure 6. Inverse gelation time vs. total cellulose concentration for all suspensions studied.

392 Lines are power-law approximations

393

394 The modulus at gel point, G_{gel} , is plotted in Figure 7 as a function of total cellulose and total
 395 solids concentration. It was previously shown that G_{gel} increases with the concentration of
 396 dissolved cellulose (Cai & Zhang, 2006; Gavillon & Budtova, 2008; Liu et al., 2011) and
 397 Figure 7a also shows this trend, as expected. The modulus is higher for DP 640: on one hand,
 398 longer cellulose chains have higher probability in forming junctions, and on the other hand,
 399 the amount of non-dissolved fraction in solutions of DP 640 is much higher than that in
 400 solutions of DP 320. Both reasons act towards gel reinforcement. Even though gelation
 401 kinetics depends on the temperature, the latter does not influence gel modulus within the
 402 experimental errors, as shown in Figure 7a and previously reported by Roy et al., (2003).

403



404

405

406

407

408

409

410

411

412

413

414

415

416

417

418

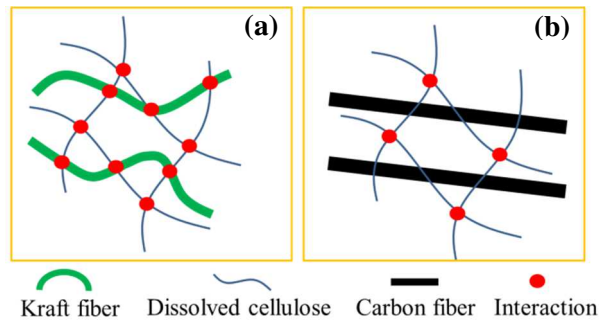
Figure 7. Modulus at gel point as a function of total cellulose (a) and total solids (b) concentrations for all suspensions studied. Filled points correspond to the measurements performed at 5°C and open points at 10°C. The errors are smaller or of the size of points.

Figure 7b shows that when the modulus at gel point is plotted as a function of total solids concentration, all data fall on one master plot emphasizing the role of all cellulose “fibers” present in the suspension, whatever their origin is. However, this plot does not take into account cellulose concentration in the continuous phase, which obviously also contributes to suspension gelation.

It was suggested that elastic modulus is power-law dependent on cellulose concentration in cellulose-NaOH-water solution, and the exponents are around 3-4 (Gavillon & Budtova, 2008; Liu et al., 2011). Figure 7a shows that power-law exponents obtained for suspensions studied are much higher, from around 4.8 to 10.6. Cellulose concentration interval is small which may induce incertainties, but slopes are much steeper as non-dissolved fraction and

419 added kraft fibers strongly reinforce the network despite being below the percolation
420 concentration.

421 Summarizing, Figure 8 shows a schematic presentation of gelling cellulose suspensions with
422 “interacting” (cellulose-based) and “non-interacting” (carbon) fibers. The additional bonds
423 formed between dissolved cellulose and cellulose-based “solids” (non-dissolved fraction and
424 added fibers) accelerate suspension gelation and increase gel modulus while no bonds are
425 formed between dissolved cellulose and carbon fibers. **We speculate that the interactions are**
426 **between dissolved cellulose chains and hydrated and partly deprotonated cellulose on the**
427 **surface of the “solids”**. The nature of the bonds leading to gelation of cellulose-NaOH-water
428 solutions is still under debates. Traditionally, gelation of aqueous cellulose-NaOH solutions
429 is said to be due to the formation of hydrogen bonds between overlapping cellulose
430 macromolecules, leading to a micro-phase separation in time (gels become opaque) and
431 formation of polymer-rich and polymer-poor phases (Gavillon & Budtova, 2008; Budtova &
432 Navard, 2016). Another option was suggested by Pereira et al. (2018): gelation of cellulose-
433 NaOH solutions is due to crystallization and precipitation of cellulose. Finally, it was
434 demonstrated that cellulose carbonates are formed in cellulose-NaOH solutions as a result of
435 the interactions of dissolved deprotonated cellulose and CO₂, the latter always being present
436 in air (Gunnarsson, Bernin, Östlund & Hasani, 2018). Carbonate bridges were suggested to
437 be the reason of gelation. All three mechanisms can theoretically explain the interactions
438 between dissolved and non-dissolved cellulose leading to suspension gelation, however, the
439 formation of hydrogen and carbonate bonds seem to be more probable.



440

441 Figure 8. **Simplified** schematic illustration of larger number of interactions between cellulose
 442 chains and cellulose fibers (a) as compared to the case of added inert carbon fibers (b).

443

444 5. Conclusions

445 Gelation of cellulose-NaOH-water in the presence of non-dissolved cellulose fibers was
 446 studied using dynamic rheology. Certain phenomena were general for solutions (**without**
 447 **fibers**) and suspensions (**with fibers**), such as **acceleration of gelation** with the increase of
 448 temperature and of total cellulose concentration, as known from literature on cellulose-
 449 NaOH-water solutions. The presence of non-dissolved fibers (either from non-dissolved
 450 fraction, or from added fibers, or from both) strongly accelerated suspension gelation and
 451 increased gel modulus. **This phenomenon is** supposed to be due to the additional **interactions**
 452 **between cellulose chains in solution and on the surface of non-dissolved fibers.** The
 453 **mechanism** can be either **due to** hydrogen and/or carbonate bonds, the latter being formed due
 454 to the interactions between deprotonated cellulose and CO₂ from air. Both **total and solid**
 455 **cellulose** concentrations were shown to be important for describing and interpreting gelation
 456 **of** cellulose solutions in the presence of non-dissolved cellulose.

457

458 Acknowledgements

459 Authors wish to acknowledge the funding from Business Finland, Stora Enso Oyj and UPM-
460 Kymmene Oyj. We also want thank Separation Research Oy Ab and Fibertus Oy for
461 collaboration, Romain Castellani (CEMEF, MINES ParisTech) for the help with rheological
462 experiments, Rita Hatakka (Aalto University) for the assistance with pulp composition
463 determination, Kaalro Nieminen (Aalto University) for the assistance with fiber size
464 distributions and Michael Hummel (Aalto University) for rewarding discussions.
465 Additionally we wish to sincerely thank Nolene Byrne (Deakin University) for providing the
466 carbon fibers for this study.

467 **References**

468 Abbot, A., & Bismarck, A. (2010). Self-reinforced cellulose nanocomposites. *Cellulose*, 17,
469 779-791.

470 Abdennadher, A., Vincent, M., & Budtova T. (2016) Rheological properties of molten flax-
471 and Tencel ®-polypropylene composites: Influence of fiber morphology and concentration.
472 *Journal of Rheology*, 60, 191-201.

473 Budtova, T., & Navard, P. (2016). Cellulose in NaOH-water based solvents: a review.
474 *Cellulose*, 23, 5-55.

475 Cai, J., & Zhang, L. (2006). Unique gelation behavior of cellulose in NaOH/urea aqueous
476 solution. *Biomacromolecules*, 7, 183-189.

477 Cao, Y., Wu, J., Zhang, J., Li, H., Zhang, Y., & He, J. (2009). Room temperature ionic
478 liquids (RTILs): A new and versatile platform for cellulose processing and derivatization.
479 *Chemical Engineering Journal*, 147, 13-21.

480 Capiati NJ, Porter RS (1975) The concept of one polymer composites modelled with high
481 density polyethylene. *Journal of materials science* 10: 1671-1677.

482 Davidson, G. F. (1934). The dissolution of chemically modified cotton cellulose in alkaline
483 solutions. Part I: In solutions of NaOH, particularly at T°C below the normal. *The Journal of*
484 *the Textile Institute*, 25, T174-T196.

485 Duchemin, B. J. C., Newman, R. H., & Staiger, M.P. (2009). Structure-property relationship
486 of all-cellulose composites. *Composites Science and Technology*, 69, 1225-1230.

487 Egal, M., Budtova, T., & Navard, P. (2007) Structure of aqueous solutions of
488 microrcrystalline cellulose/sodium hydroxide below 0 °C and the limit of cellulose dissolution.
489 *Biomacromolecules*, 8, 2282-2287.

490 Fink, H-P., Weigel, P., Purz, H. J., & Ganster, J. (2001). Structure formation of regenerated
491 cellulose materials from NMMO-solutions. *Progress in Polymer Science*, 26, 1473-1524.

492 Gavillon, R., & Budtova, T. (2008). Aerocellulose: new highly porous cellulose prepared
493 from cellulose–NaOH aqueous solutions. *Biomacromolecules*, 9, 269–277.

494 Gindl, W., & Keckes, J. (2005). All-cellulose nanocomposite. *Polymer*, 46, 10221-10225.

495 Gunnarsson, M., Bernin, D., Östlund, Å., & Hasani, M. (2018). The CO₂ capturing ability of
496 cellulose dissolved in NaOH (aq) at low temperature. *Green Chemistry*, 20, 3279-3286.

497 Hildebrandt, N., Piltonen, P., Valkama, J., & Illikainen, M. (2017). Self-reinforcing
498 composites from commercial pulps via partial dissolution with NaOH/urea. *Industrial Crops
499 & Products*, 109, 79-84.

500 Huber, T., Müssig, J., Curnow, O., Pang, S., Bickerton, S., & Staiger, M.P. (2012). A critical
501 review of all-cellulose composites. *Journal of Materials Science*, 47, 1171-1186.

502 Janson, J. (1970). Calculation of the polysaccharide composition of wood and pulp. *Paperi ja
503 puu*, 5, 323-329.

504 Kamide, K., Okajima, K., & Kowsaka, K. (1992). Dissolution of natural cellulose into
505 aqueous alkali solution: role of supermolecular structure of cellulose. *Polymer Journal*, 24,
506 71-96.

507 Korhonen, O., Sawada, D., & Budtova, T. (2019). All-cellulose composites via short fiber
508 dispersion approach using NaOH-water solvent. *Cellulose*, 26, 4881-4893.

509 Labidi, K., Korhonen, O., Zrida, M., Hamzaoui, A.H., & Budtova, T. (2019). All-cellulose
510 composites from alfa and wood fibers. *Industrial crops & products*, 127, 135-141.

511 Liu, W., Budtova, T., & Navard, P. (2011). Influence of ZnO on the properties of dilute and
512 semi-dilute cellulose-NaOH-water solutions. *Cellulose*, 18, 911-920.

513 Lu, A., Liu, Y., Zhang, L. & Potthast, A. (2011) Investigation on metastable solution of
514 cellulose dissolved in NaOH/urea aqueous system at low temperature. *Journal of Physical*
515 *Chemistry B*. 115, 12801-12808.

516 McCormick, C.L., & Lichatowich, D. K. (1979). Homogeneous solution reactions of
517 cellulose, chitin, and other polysaccharides to produce controlled-activity pesticide systems.
518 *Journal of Polymer Science: Polymer Letters Edition*, 17, 479-484.

519 Minus, M., & Kumar, S. (2005). The Processing, Properties and Structure of Carbon Fibers.
520 *The Journal of the Minerals, Metals & Materials Society*, 57, 52-58.

521 Nadhan, A. V., Rajulu, A. V., Li, R., Jie, C., & Zhang, L. (2012). Properties of regenerated
522 cellulose short fibers/cellulose green composite films. *Journal of Polymers and the*
523 *Environment*, 20, 454-458.

524 Nishino, T., Matsuda, I., & Hirao, K. (2004). All-cellulose Composite. *Macromolecules*, 37,
525 7683-7687.

526 Ouajai, S., & Shanks, R. A. (2009). Preparation, structure and mechanical properties of all-
527 hemp cellulose biocomposites. *Composites Science and Technology*, 69, 2119-2126.

528 Pereira, A., Duarte, H., Nosrati, P., Gubitosi, M., Gentile, L., Romani, A., Medronho, B., &
529 Olsson, U. (2018). Cellulose gelation in NaOH solutions is due to cellulose crystallization.
530 *Cellulose*, 25, 3205-3210.

531 Piltonen, P., Hildebrandt, N., Westerlind, B., Valkama, J., Tervahartiala, T., & Illikainen, M.
532 (2016). Green and efficient method for preparing all-cellulose composites with NaOH/urea
533 solvent. *Composites Science and Technology*, 135, 153-158.

534 Ross-Murphy, S. B. (1991). Concentration dependence of gelation time. In E. Dickinson
535 (Ed), *Food Polymers. Gels and Colloids* (pp. 357-368). Cambridge: Royal Chemistry.

536 Roy, C., Budtova, T., & Navard, P. (2003). Rheological properties and gelation of aqueous
537 cellulose-NaOH solutions. *Biomacromolecules*, 4, 259-264.

538 Ruan, D., Lue, A., & Zhang, L. (2008). Gelation behaviors of cellulose solution dissolved in
539 aqueous NaOH/thiourea at low temperature. *Polymer*, 49, 1027-1036.

540 Saarikoski, E., Rissanen, M., & Seppälä, J. (2015). Effect of rheological properties of
541 dissolved cellulose/microfibrillated cellulose blend suspensions on film forming.
542 *Carbohydrate polymers*, 119, 62-7.

543 Sirviö, J. A., Visanko, M., & Hildebrandt, N. C. (2017). Rapid preparation of all-cellulose
544 composites by solvent welding based on the use of aqueous solvent. *European Polymer*
545 *Journal*, 97, 292-298.

546 Sixta, H., Potthast, A., & Krottschek, A. W. (2006). Chemical pulping processes. In H. Sixta
547 (Ed), *Handbook of pulp* (pp. 109-510). Weinheim: WILEY-VCH Verlag GmbH & Co.
548 KGaA.

549 Sojoudiasli, H., Heuzey, M-C., & Carreau, P. J. (2014). Rheological, morphological and
550 mechanical properties of flax fiber polypropylene composites: Influence of compatibilizers.
551 *Cellulose*, 21, 3797–3812.

552 Ward IM, Hine P. J. (1997). Novel composites by hot compaction of fibers. *Polymer*
553 *Engineering and Science*, 37, 1809-1814.

554 Weng, L., Zhang, L., Ruan, D., Shi, L., & Xu, J. (2004). Thermal gelation of cellulose in a
555 NaOH/Thiourea aqueous solution. *Langmuir*, 20, 2086-2093.

556 Winter, H. H. & Chambon, F. J. (1986). Analysis of linear viscoelasticity of a crosslinking
557 polymer at the gel point. *Journal of Rheology*, 30, 367.

- 558 Yang, Q., Le, A., & Zhang, L. (2010). Reinforcement of ramie fibers on regenerated cellulose
559 films. *Composites Science and Technology*, 70, 2319-1214.
- 560 Zhou, J., & Zhang, L. (2000). Solubility of cellulose in NaOH/urea aqueous solution.
561 *Polymer journal*, 32, 866-870.