



**HAL**  
open science

## Field-based gravel fluxes measurements in a wandering river to assess sediment mobility downstream a dam (Durance River, Southern French Alps)

Kélian Lagrève, Margot Chapuis, Lylia Kateb, S. Dufour, Bernard Couvert, Christian Doddoli, Mireille Provansal

### ► To cite this version:

Kélian Lagrève, Margot Chapuis, Lylia Kateb, S. Dufour, Bernard Couvert, et al.. Field-based gravel fluxes measurements in a wandering river to assess sediment mobility downstream a dam (Durance River, Southern French Alps). RCEM 2017- 10th Symposium on River, Coastal and Estuarine Morphodynamics, Sep 2017, Trente, Italy. RCEM 2017- 10th Symposium on River, Coastal and Estuarine Morphodynamics, 2017. hal-02417369

**HAL Id: hal-02417369**

**<https://hal.science/hal-02417369v1>**

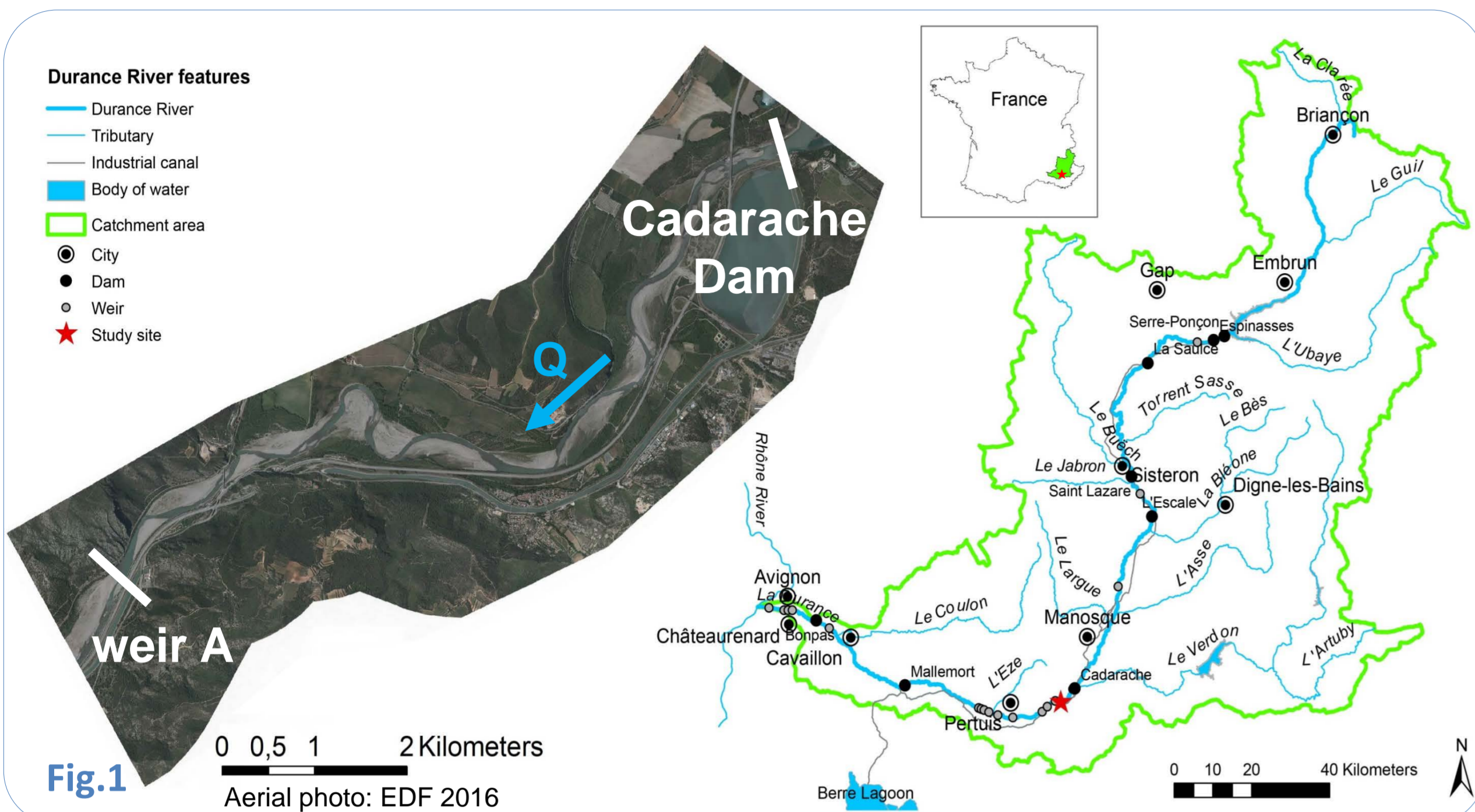
Submitted on 18 Dec 2019

**HAL** is a multi-disciplinary open access archive for the deposit and dissemination of scientific research documents, whether they are published or not. The documents may come from teaching and research institutions in France or abroad, or from public or private research centers.

L'archive ouverte pluridisciplinaire **HAL**, est destinée au dépôt et à la diffusion de documents scientifiques de niveau recherche, publiés ou non, émanant des établissements d'enseignement et de recherche français ou étrangers, des laboratoires publics ou privés.

## 1. Context

The Durance River is a dynamic, wandering gravel-bed river which sediment dynamics has been heavily modified in the last century because of dam infrastructures and gravel mining.



## 2. Aim

To study the morphodynamics of a wandering reach located downstream a dam that lets sediment go through, we:

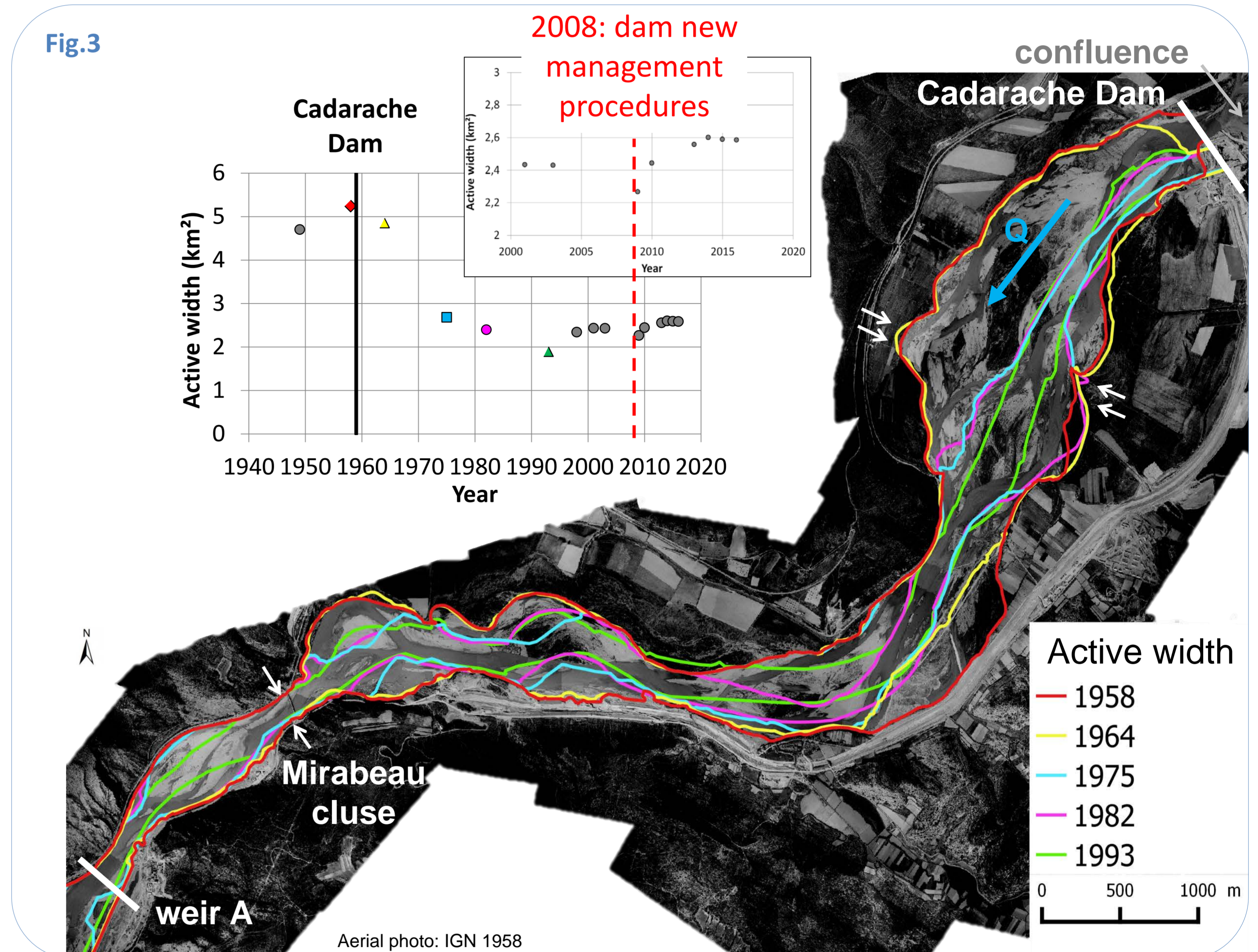
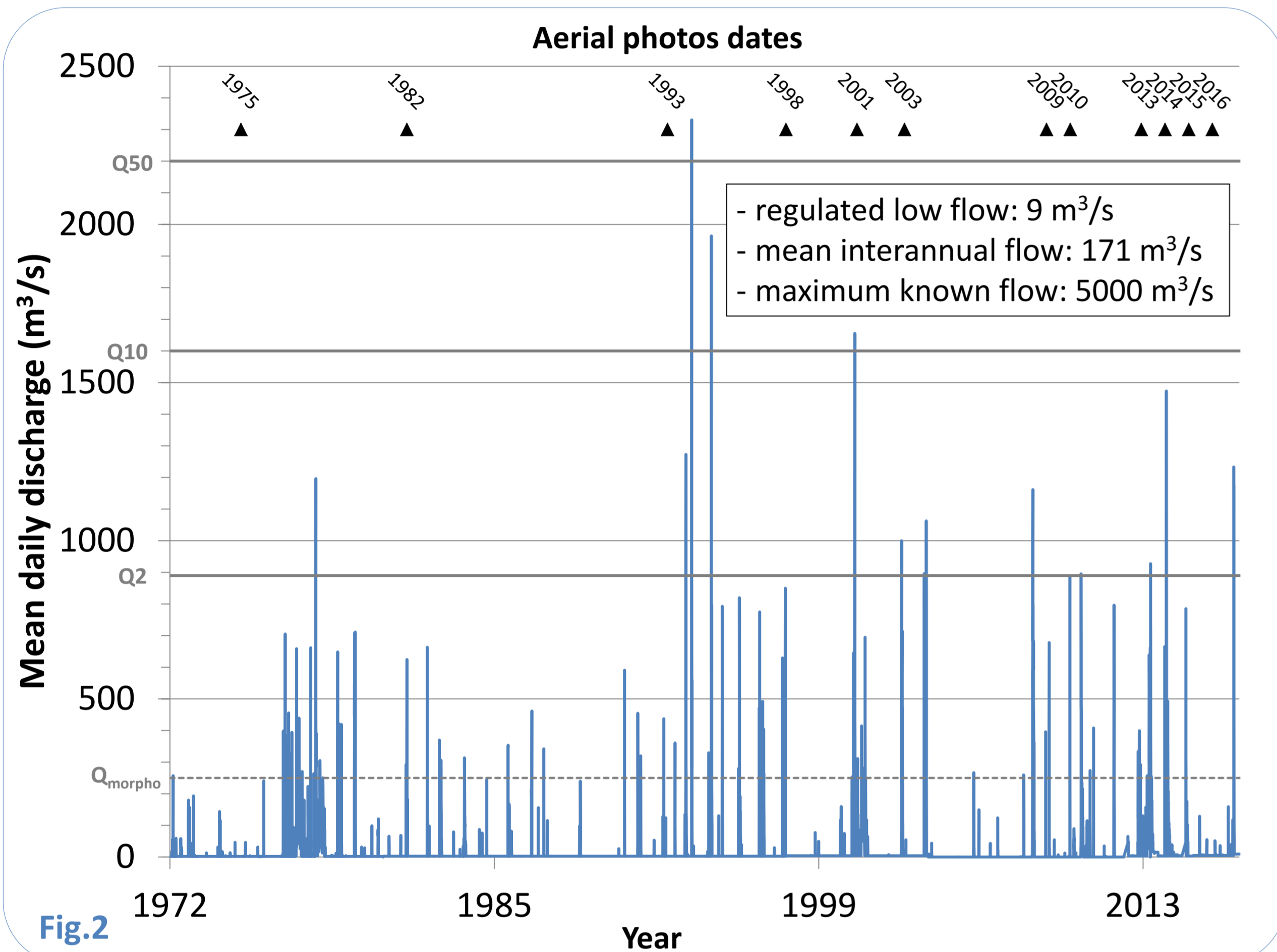
- assessed the bed morphodynamics in relation to the modified hydrology downstream the dam (study period: 1949–2016, quantification of the active width)
- quantified the mid-term (7 years: 2010–2017) sediment fluxes downstream the dam.

## 3. Methods

Criteria	Objectives	Methods
<b>Active width</b>	Spatial and temporal variability of the active width: quantification of lateral mobility and influence of hydrology	Diachronic study of orthophotographies (15 sets within 1949–2016) by active width GIS digitization
<b>River bed topography</b>	Evolution of the riverbed topography to quantify sediment fluxes	Field measurements (GPS RTK) and GIS post-processing (QGIS): DEM analyses
<b>Sediment particle displacements</b>	To quantify sediment fluxes	RFID tracking of the coarse fraction of bed material

## 4. Study site – Fig.1 & Fig.2

- Large (mean width: 240 m) and steep (mean slope: 0.23%) wandering river
- 10 km-long reach located in the lower part of the Durance River (Southern French Alps), downstream Cadarache Dam
- Intense planning within the floodplain since 1960 (dam, highway, diversion canal)
- Peculiar hydrological regime: both Mediterranean and alpine influences → intense and short floods
- Bed material: gravel and fine matrix (coarse fraction:  $D_{50} = 40$  mm ; sand and silt fraction:  $D_{50} = 33$   $\mu$ m)
- Since 2008, new management procedures at the dam: sediment transport is allowed when flooding above 500  $m^3/s$  → sediment continuity



## 5. Results

### 5a. Active width and lateral mobility – Fig.3

#### Before dam (1958)

- Lateral mobility controlled by geologic structure (confluence, cluse)

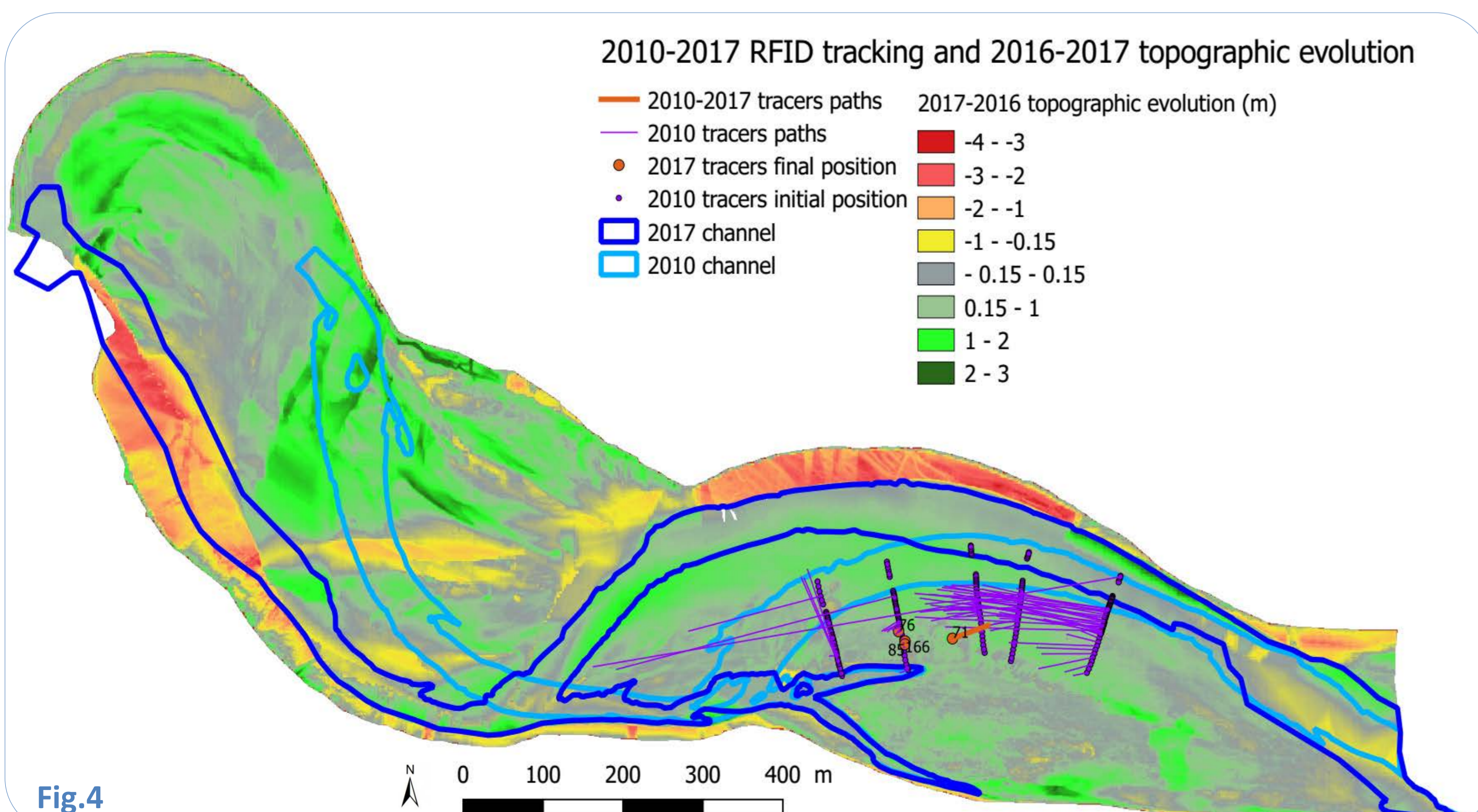
#### After dam (after 1959)

- 1958–1993: reduction of active width (64%), also linked to low hydrological regime
- 1994–2016: **increase in active width (11%)**, linked to:
  - intense hydrological regime (9 floods > 900  $m^3/s$ )
  - new dam management procedures (discharge and sediment continuity)

### 5b. Bed topographic evolution and RFID tracking – Fig.4

#### 2009–2017 period

- Bed reworking (erosion vs. deposition phases) linked to hydrology
- Local general trend: deposition
- Outer banks translations by bank erosion →  $\equiv$  **sediment input downstream**



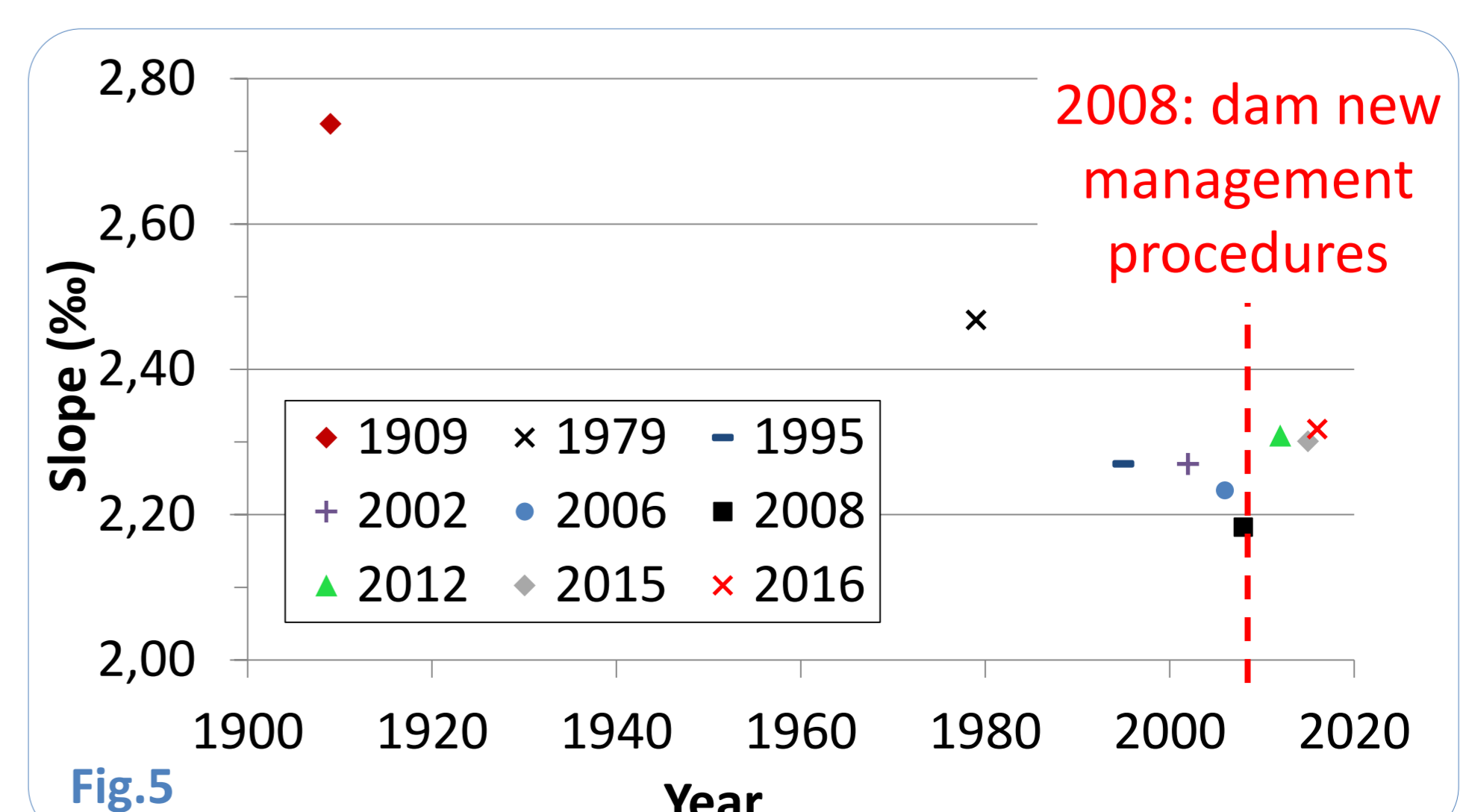
### 5c. Longitudinal profile – Fig.5

#### 1909–2008 period

- Direct consequence of the dam: incision up to 2 m (Chapuis *et al.*, 2015)
- Decrease in bed slope: adjustment to sediment discontinuity due to the dam (downstream erosion)

#### 2008–2016 period

- Increase in bed slope to adjust from dam new management procedures: validation of the « equilibrium slope » to match transport capacity and upstream bedload supply (see hypothesis in Lefort, 2007, p.13) → **reactivation of sediment dynamics**



## References