



HAL
open science

Future MTR capabilities Jules Horowitz ReactoretIn-core instrumentation for MTR experiments

J.-F. Villard, G. Bignan

► **To cite this version:**

J.-F. Villard, G. Bignan. Future MTR capabilities Jules Horowitz ReactoretIn-core instrumentation for MTR experiments. ICTP/IAEA Workshop “Research Reactors for Development of Materials and Fuels for Innovative Nuclear Energy Systems”, Nov 2017, Trieste, Italy. hal-02416242

HAL Id: hal-02416242

<https://hal.science/hal-02416242>

Submitted on 17 Dec 2019

HAL is a multi-disciplinary open access archive for the deposit and dissemination of scientific research documents, whether they are published or not. The documents may come from teaching and research institutions in France or abroad, or from public or private research centers.

L'archive ouverte pluridisciplinaire **HAL**, est destinée au dépôt et à la diffusion de documents scientifiques de niveau recherche, publiés ou non, émanant des établissements d'enseignement et de recherche français ou étrangers, des laboratoires publics ou privés.

DE LA RECHERCHE À L'INDUSTRIE

cea den

Future MTR capabilities : Jules Horowitz Reactor

Jean-François VILLARD, Gilles BIGNAN

French alternative energies and atomic energy commission
Nuclear Energy Division – Reactor Studies Department
Cadarache – F-13108 St Paul Lez Durance, France

Joint ICTP/IAEA Workshop “Research Reactors for Development of
Materials and Fuels for Innovative Nuclear Energy Systems”

6-10 November 2017, ICTP - Trieste, Italy



Summary

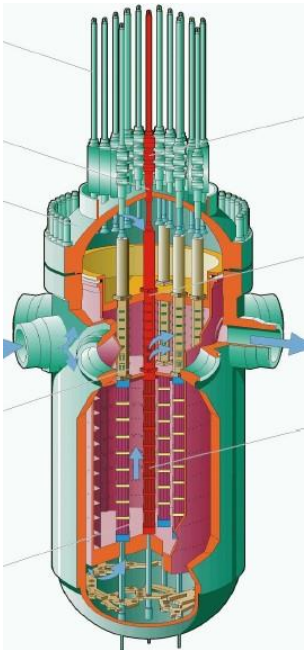
1. Context and objectives of the JHR
2. General figures of the JHR
3. Experimental capabilities of the JHR
4. JHR consortium and collaborations
5. Status of the reactor construction

1. Context and objectives of the JHR

1. Context and objectives of the JHR

In-pile testing in support of the nuclear Industry

Just for France, 58 NPPs means more than 10 000 fuel assemblies under irradiation at a time...



The fuel has to be carefully designed, with enough **Safety Analysis Design Margins**

+ **new fuel managements**

+ **new LWR standards...**

→ need to generate additional margins



1. **Improve Modeling, Calculation tools and Testing**
2. **Improve Safety Analysis design Methods**
3. **Improve Fuel Product**



In-pile data required !

1. Context and objectives of the JHR

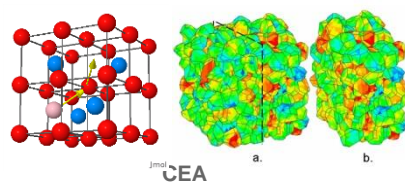
The Key-Role of Material Testing Reactors for Fuel and Material qualification under irradiation



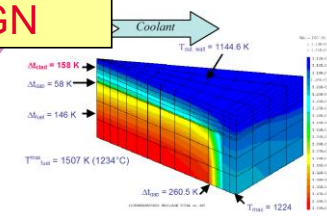
CODES Validation
QUALIFICATION Documents

EXPERIMENTAL DATA EXPERTISE

BASIS RESEARCH & NUMERICAL SIMULATION



DESIGN



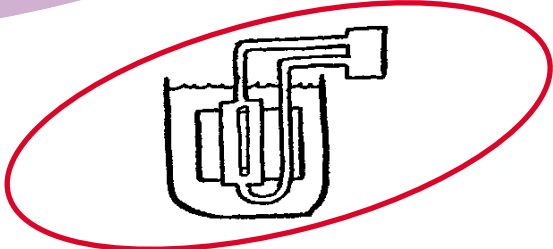
POST IRRADIATION EXAMINATIONS **SINGLE EFFECT EXPERIMENTS**

Hot lab. for PIE



BEHAVIOUR UNDER IRRADIATION

Material Test Reactor



MANUFACTURING REFABRICATION CHARACTERIZATION

Hot Lab.

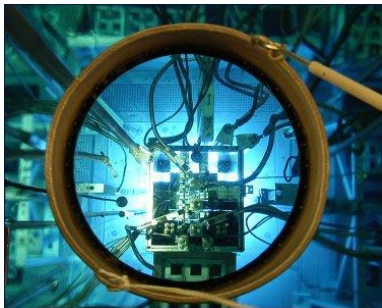


1. Context and objectives of the JHR

MTRs in France



SILOE
Shutdown 1997



OSIRIS
Shutdown 2015



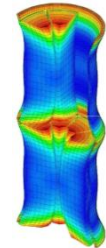
PHENIX
Shutdown 2010



Jules Horowitz Reactor Main objectives

1. R&D in support to nuclear Industry

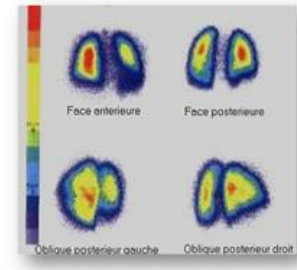
- Safety and Plant life time management (ageing & new plants)
- Fuel behavior validation in incidental and accidental situation
- Assess innovations and related safety for future NPPs



2. Radio-isotopes supply for medical application

■ ^{99}Mo production

JHR will supply 25% of the European demand
(today about 8 millions protocols/year)
+ Up to 50% upon specific request



3. A key tool to support expertise

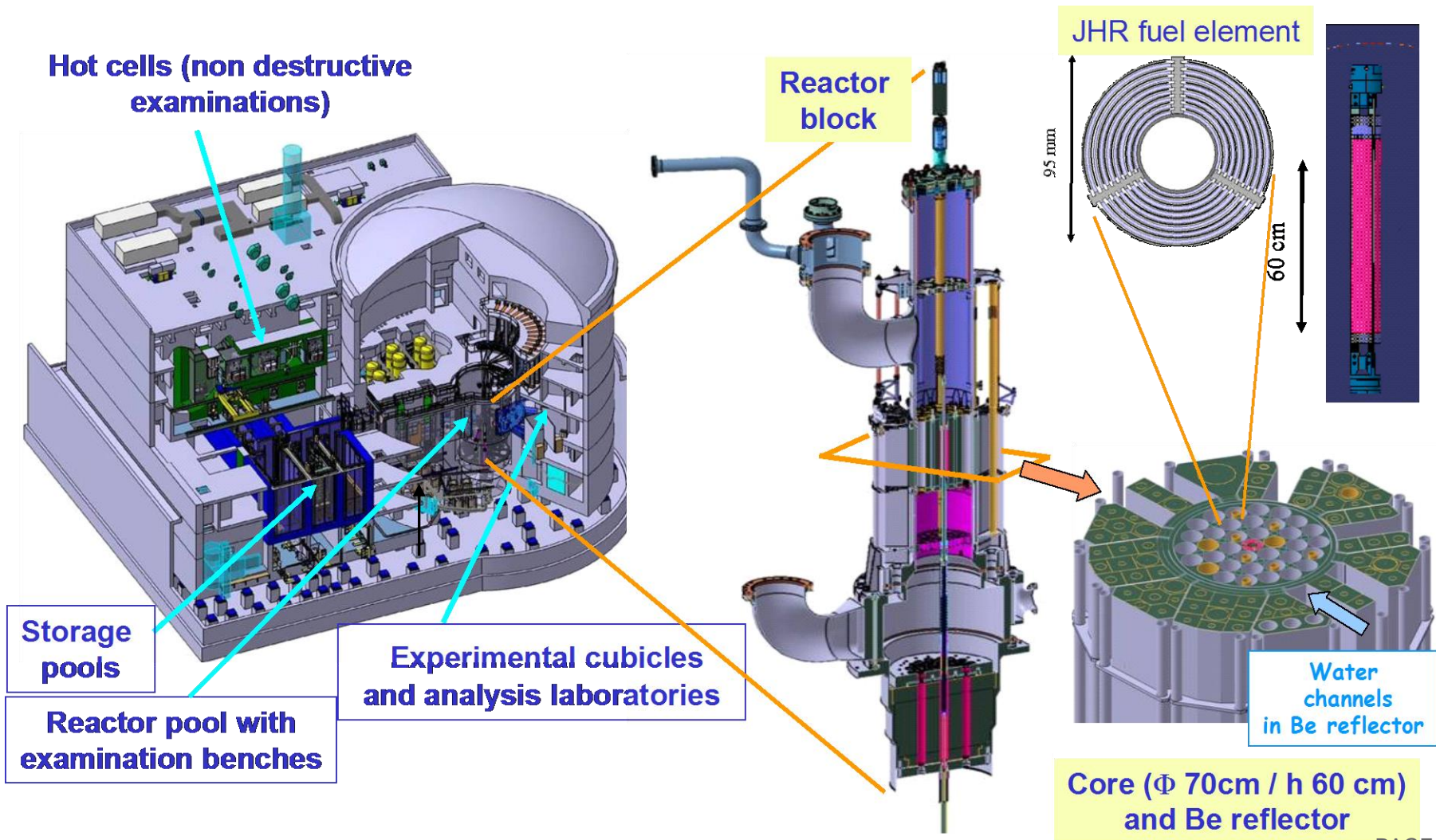
- Training new generations (JHR simulator, secondees program)
- Maintaining a national expertise staff and credibility for public acceptance
- Assessing safety requirements evolution and international regulation harmonization



2. General figures of the JHR

2. General figures of the JHR

JHR: a modern 100 MWth pool-type light water MTR optimized for fuel and material testing



2. General figures of the JHR

General layout of the JHR site

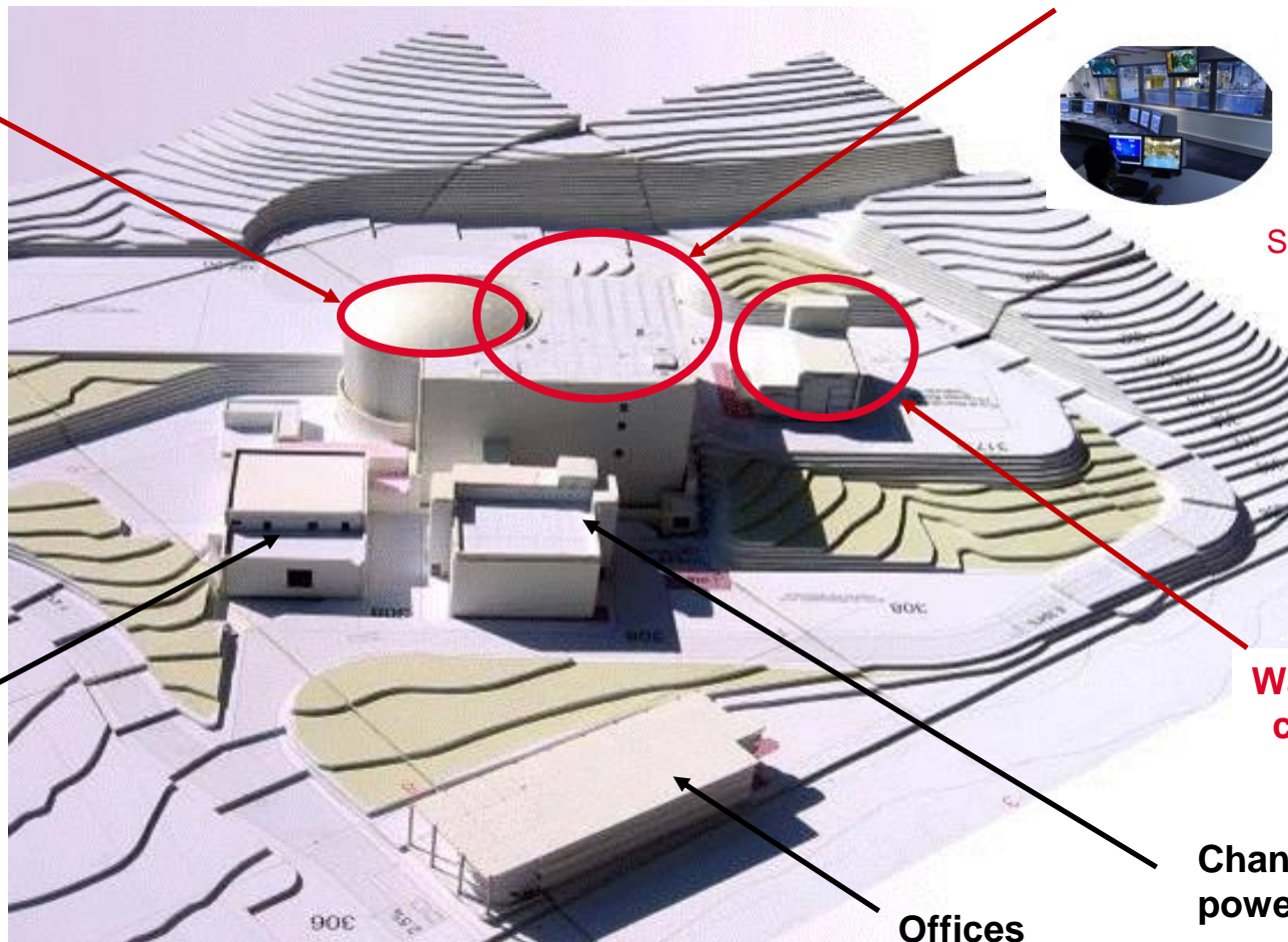
Reactor Building

Reactor pool (DD, NDE)
Experimental rooms

About 200 aseismic pads

Nuclear Auxiliary Building

Laboratories
Control room
Hot cells (NDE + handling)
Storage pools (NDE)

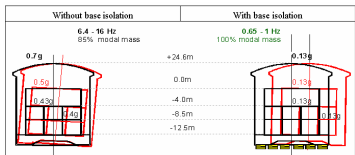


Warehouse and cold workshop

Changing rooms + power supply

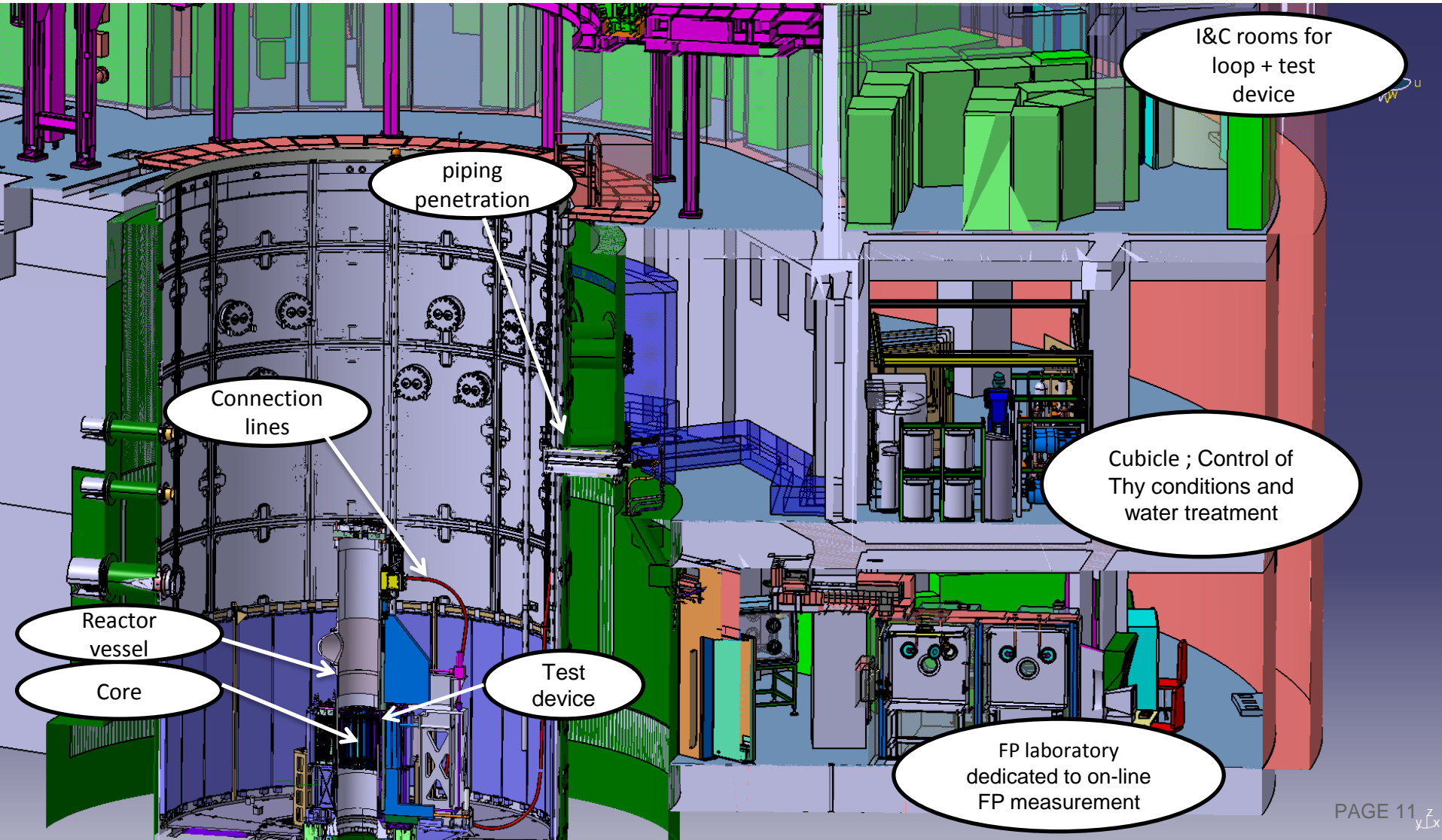
Offices

Cooling systems



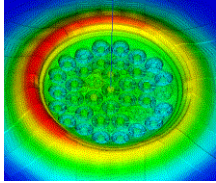
2. General figures of the JHR

Reactor building

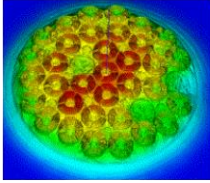


2. General figures of the JHR

Thermal neutron flux



Fast neutron flux



The core is under moderated:
 → High fast neutron flux in the core
 → High thermal neutron flux in the reflector

In reflector
 Up to $5.5 \cdot 10^{14}$ n/cm².s
 ~20 fixed positions
 (100mm ; 1 position 200mm)
 and 6 displacement systems

~20 simultaneous experiments

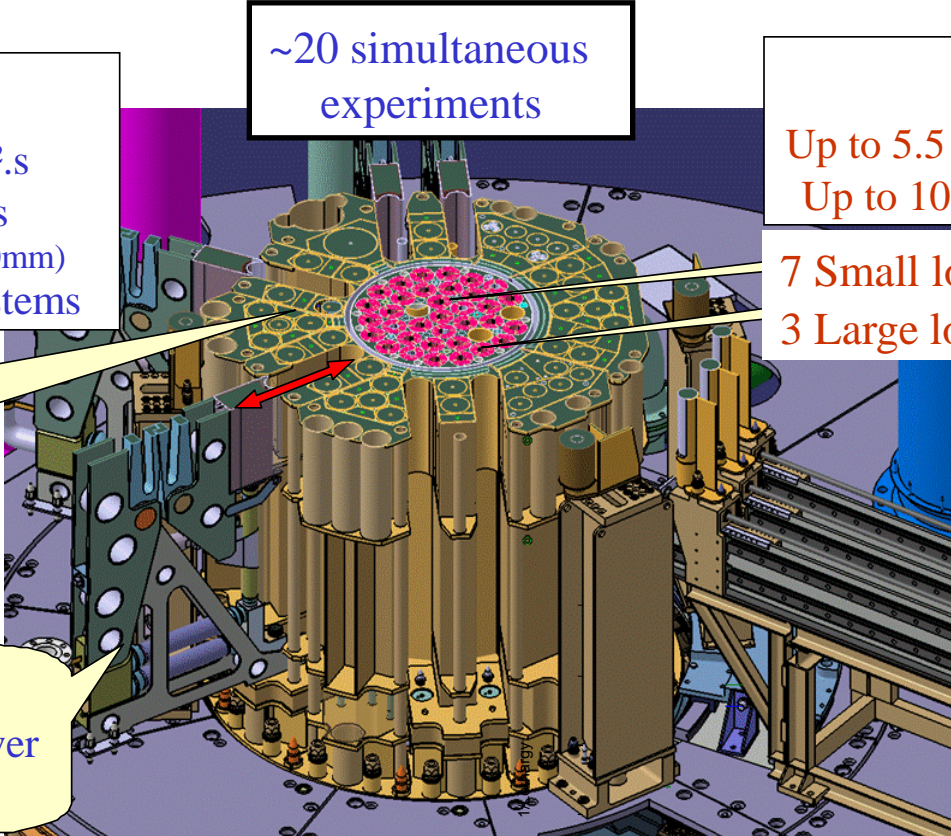
In core
 Up to $5.5 \cdot 10^{14}$ n/cm².s > 1 MeV
 Up to 10^{15} n/cm².s > 0.1 MeV

7 Small locations (F ~ 32 mm)
 3 Large locations (F ~ 80 mm)

Fuel studies: up to 600 W/cm with a 1% ²³⁵U PWR rod

Material ageing (low ageing rate)

Displacement systems:
 • Adjust the fissile power
 • Study transients



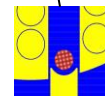
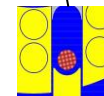
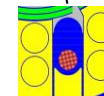
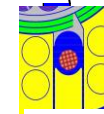
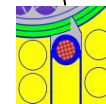
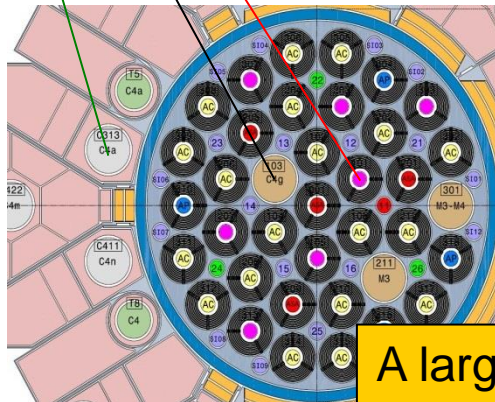
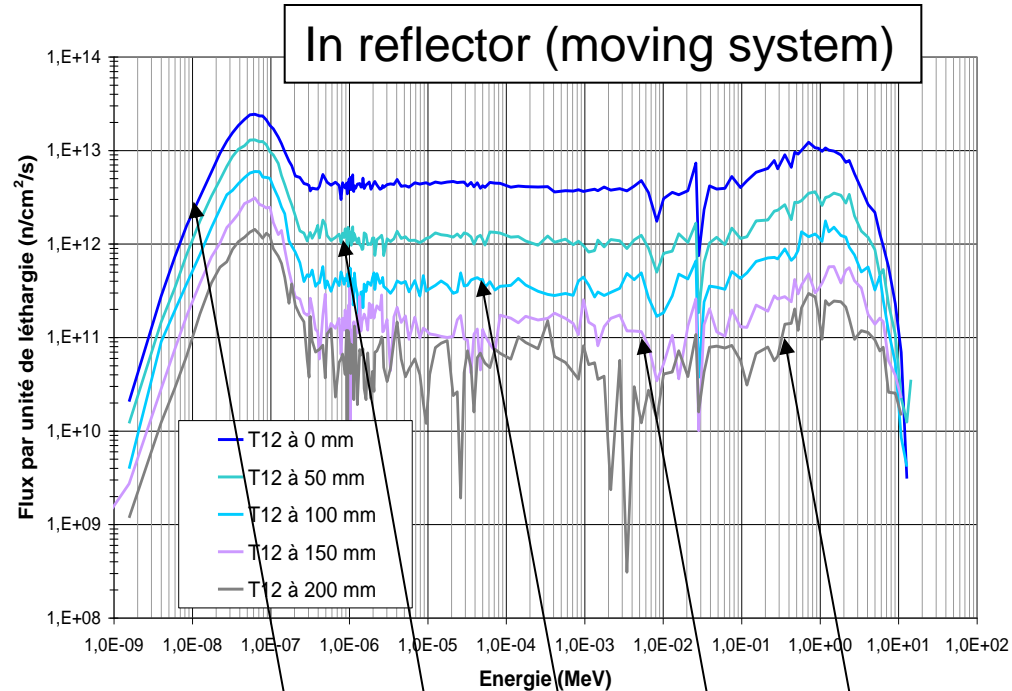
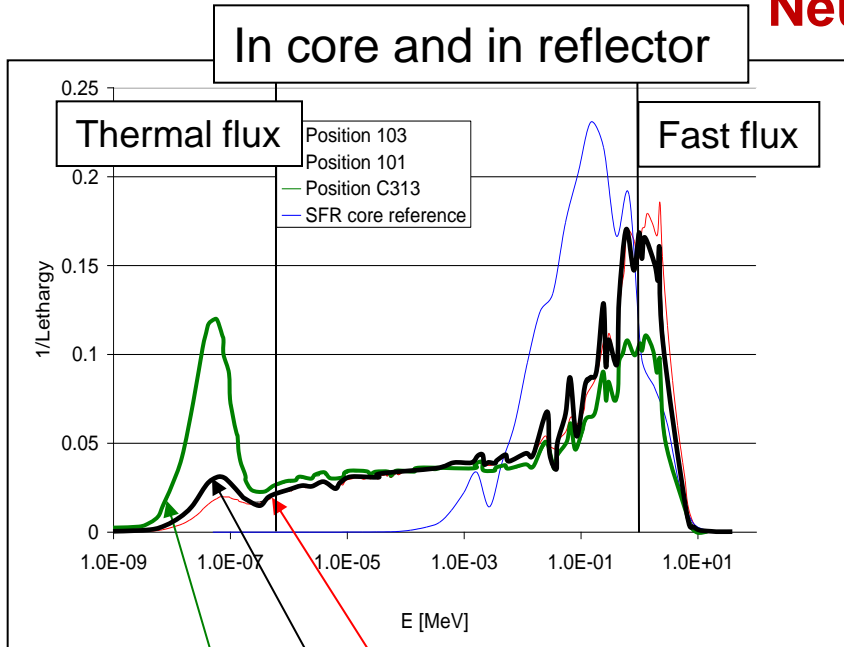
Fuel experiment (fast neutron flux – GEN IV)

Material ageing (up to 16 dpa/y) GEN II & III + GEN IV

Core Designed for UMoAl fuel
 Start-up with U₃Si₂-Al fuel
 70 MWth / 100 MWth
 25 to 30 days cycle length
 6-7 days shutdown

2. General figures of the JHR

Neutron spectra



A large range of neutron fluxes and spectra
(and possible adaptation with « neutron filters »)

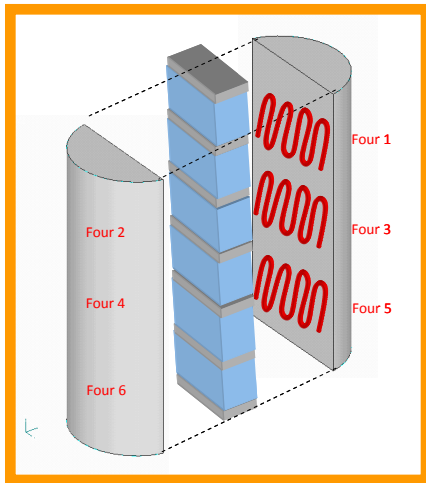
3. Experimental capabilities of the JHR

3. Experimental capabilities of the JHR

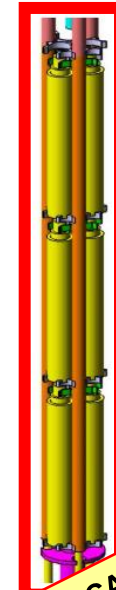
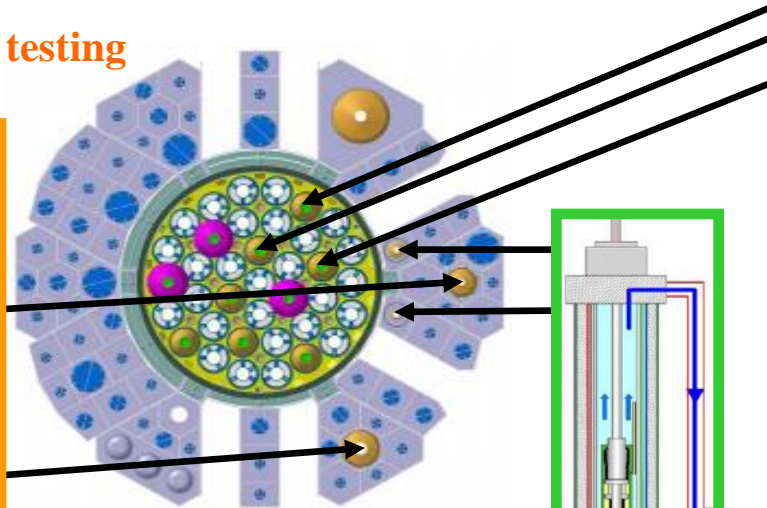
Hosting experimental systems (dedicated to LWR material testing)

OCCITANE

For pressure vessel steel testing



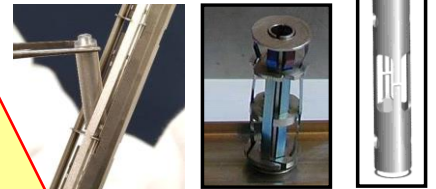
- Irradiated material behaviour
Tensile tests, resilience test (Charpy),
crack propagation tests
- Behaviour of Thermal
affected zones



CALIPSO, MICA
For material testing
under high dpa
and accurate
temperature control
(+ mechanical loading)

specimen for μ structure evolution, tensile test ;
for 1 or 2 D creep tests ; for bending tests (stress
relieving experiments) ;...

MICA
Available
at JHR
start-up



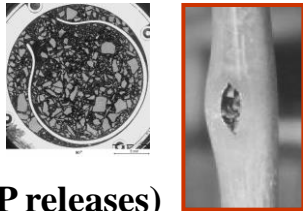
CLOE Corrosion loop
for “Zr alloy Corrosion” and
“Irradiation Assisted Stress
Corrosion Cracking”



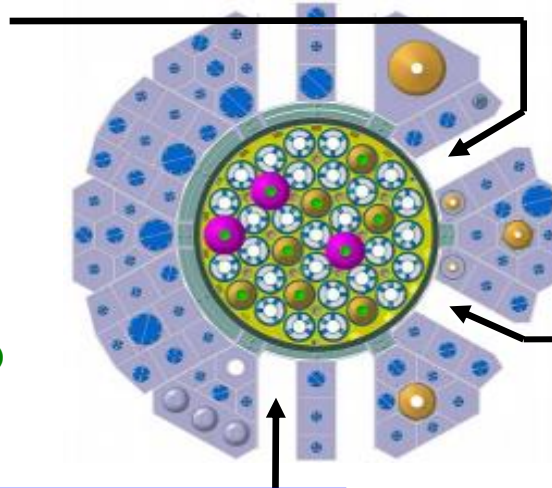
3. Experimental capabilities of the JHR

Hosting experimental systems (dedicated to LWR fuel testing)

LORELEI fuel testing under accidental conditions (LOCA)

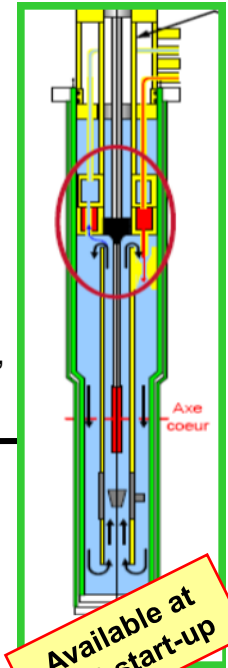
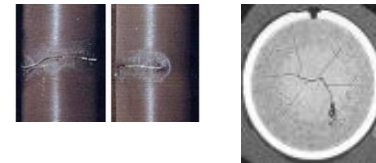


- Source Term (FP releases)
- Rod thermal-mechanical behaviour
 - Ballooning and clad burst (fuel relocation)
 - Corrosion at high temperature
 - Quenching and post-quench behaviour

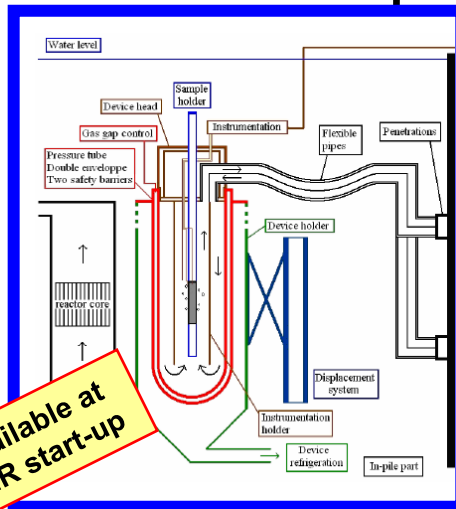
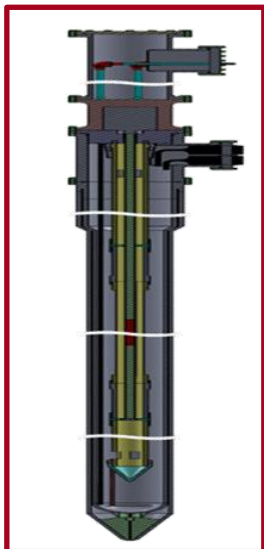


ADELINE For fuel testing under off-normal conditions

Power transient, post clad failure fuel behavior, Lift-off experiment...

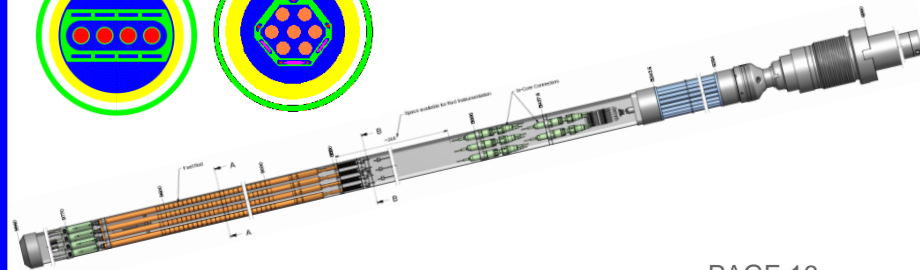
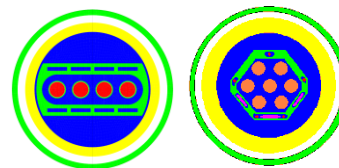


Available at JHR start-up



Available at JHR start-up

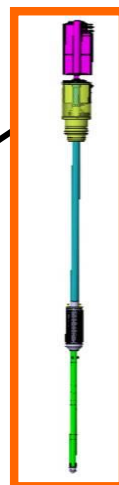
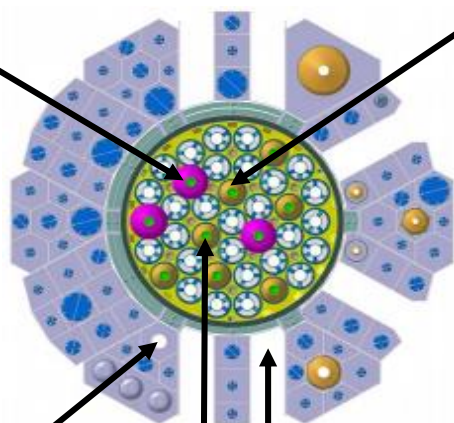
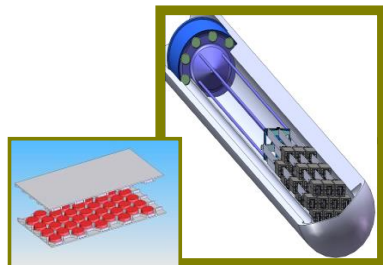
MADISON For fuel testing under nominal conditions



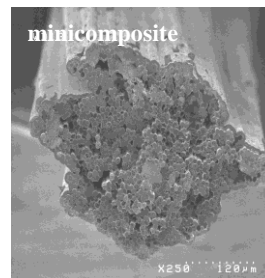
3. Experimental capabilities of the JHR

Other possible hosting experimental systems (conceptual studies)

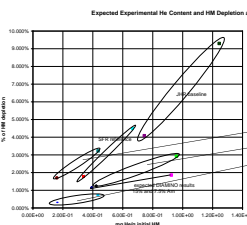
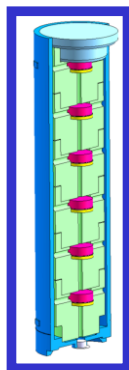
High temp. material irradiation (600-1000°C)
Large capacity



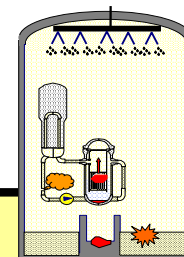
MICA (material irradiation) adapted to 1000°C gas conditions (Phaeton type – Osiris technology)



Transmutation studies

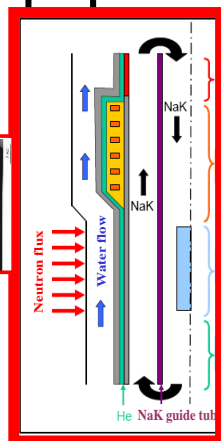
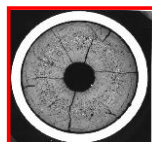


Other topics



LWR : Adeline « FP » ; Adeline “power to melt”
LWR severe accident studies
 GFR : fuel irradiation (normal and off-normal conditions)
 Fuel characterization : basic properties under irradiation (thermal diffusivity, thermal creep,..)

CALIPSO adapted to SFR fuel and material
 Normal => in core
 Off normal => in reflector



Non Destructive Examination (NDE) Benches

Sample examination
in hot cells

Gamma and X-Ray
tomography systems

Multipurpose test benches

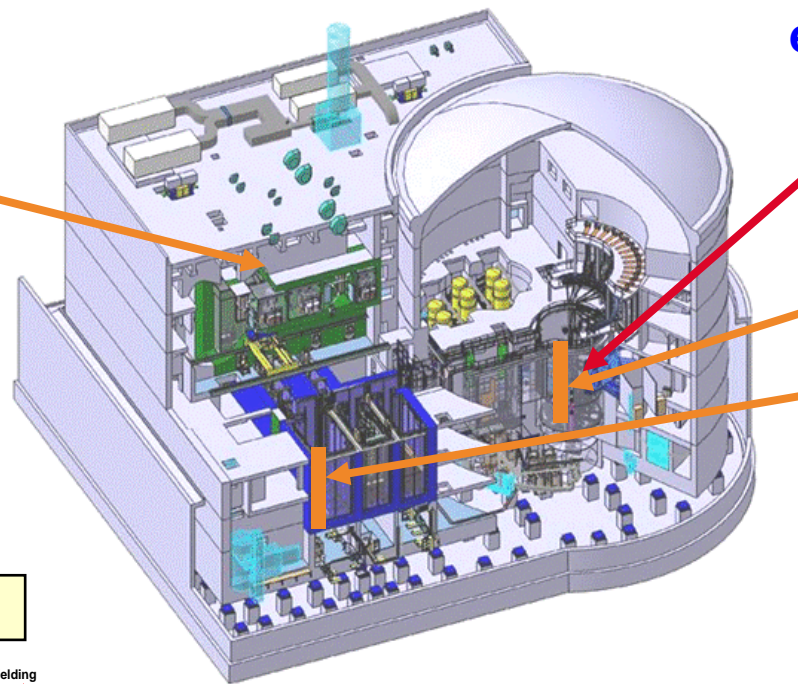
Test device
examination in pools

Neutron imaging system
in reactor pool

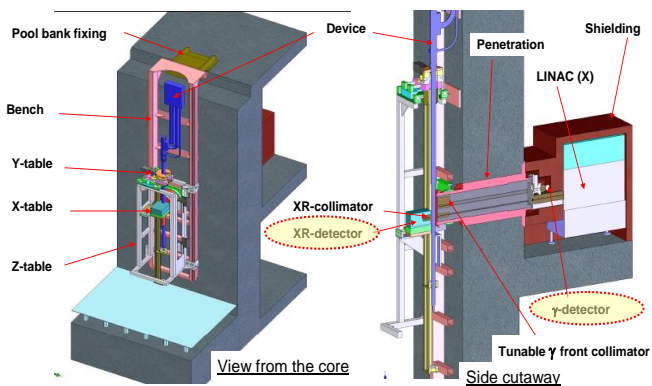
Coupled X-ray & γ
bench in reactor pool

Coupled X-ray & γ
bench in storage pool

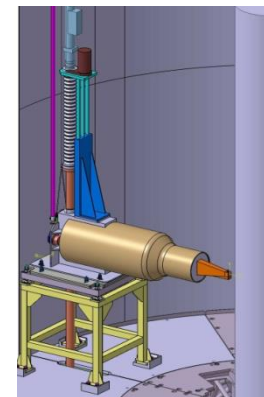
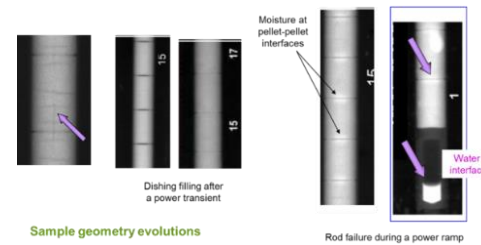
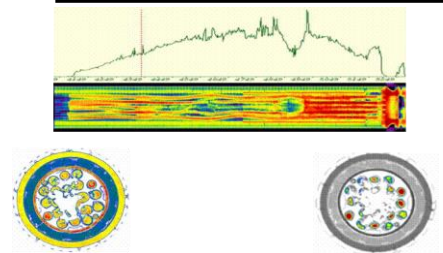
Neutron Imaging System



Coupled Gamma & X-ray bench



- Initial checks of the experimental loading
- Adjustment of the experimental protocol
- On-site NDE tests after the irradiation phase



4. JHR consortium and collaborations

4. JHR consortium and collaborations

JHR Consortium : economical model for investment & operation

- CEA = Owner & nuclear operator with all liabilities
- JHR Consortium Members own **Guaranteed Access Rights** (in proportion of their financial commitment to the construction)
- A Member can use totally or partly his access rights for implementing **proprietary programs with full property of results** and/or for participating to the **Joint International Programs** open to non-members
- *Open to new member entrance until JHR completion*

JHR Consortium current partnership: Research centers & Industrial companies

Studsvik

VATTENFALL



AREVA

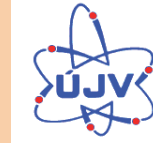


Ciemat
Centro de Investigaciones
Energéticas, Medioambientales
y Tecnológicas

SCK • CEN
STUDIECENTRUM VOOR KERNENERGIE
CENTRE D'ÉTUDE DE L'ÉNERGIE NUCLÉAIRE

FROM RESEARCH TO INDUSTRY
cea

VTT



Associated Partnership: JAEA



4. JHR consortium and collaborations

THE JHR AND ANCILLARY FACILITIES AS AN “ICERR”

Objectives of the CEA-ICERR (IAEA Terms of Ref):

- ▶ Create international scientific networks
- ▶ Make available CEA facilities and experience to affiliates
- ▶ Lead innovative joint programs with shared results
- ▶ Enhance utilization of Research Reactors
- ▶ Host international scientists / engineers (visiting scientists, operators...)
- ▶ Provide “hands on” nuclear education “in the field”



Since CEA designation in September 2015, 6 Member States from the IAEA have signed an Agreement with CEA

Strong CEA intention to welcome Junior and/or Senior Scientists, Nuclear Engineers, Operators, Safety Managers... within JHR teams for various topics (R&D programs, Hands-on training on equipment...)

5. Status of the reactor construction

5. Status of the reactor construction



Civil work of Reactor Building and Auxiliary Unit Building nearly completed



Preparation for pool liner setting-up



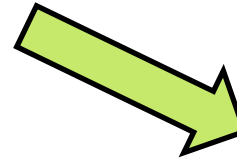
Delivery of Hot Cells end of 2016 (Czech partners)

5. Status of the reactor construction



December 2016

**March 2017 : NUCLEAR UNIT
CLOSURE**

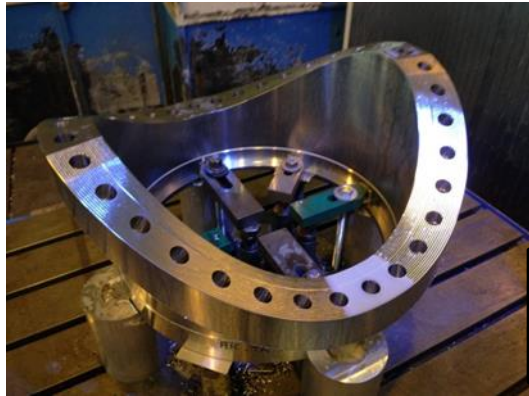


March 2017



5. Status of the reactor construction

Core components

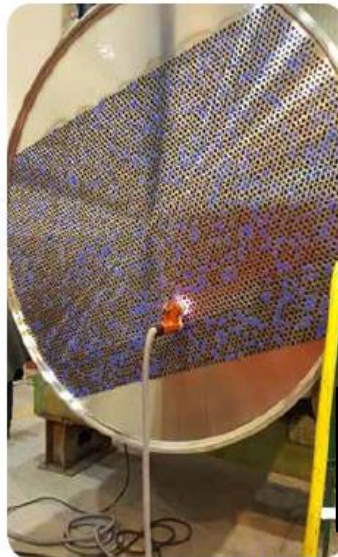


Horse saddle flange

Main water box with primary system connection



Last welding on the vessel
Electron beam welding



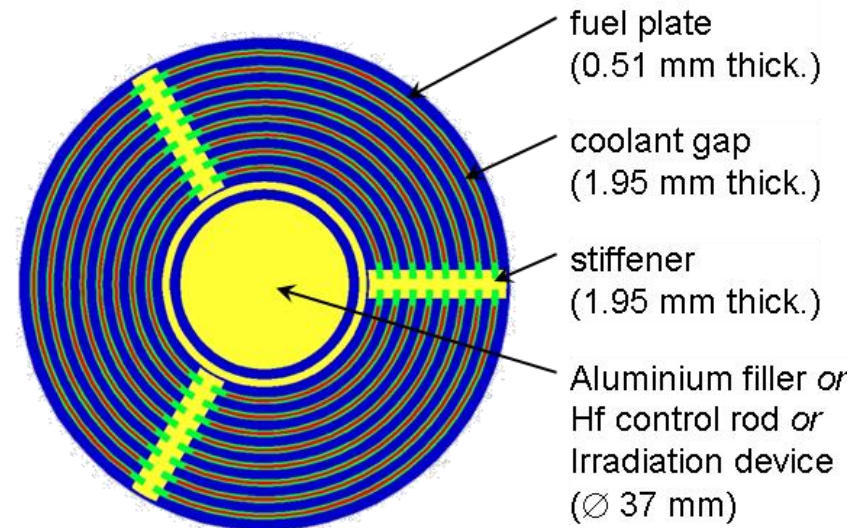
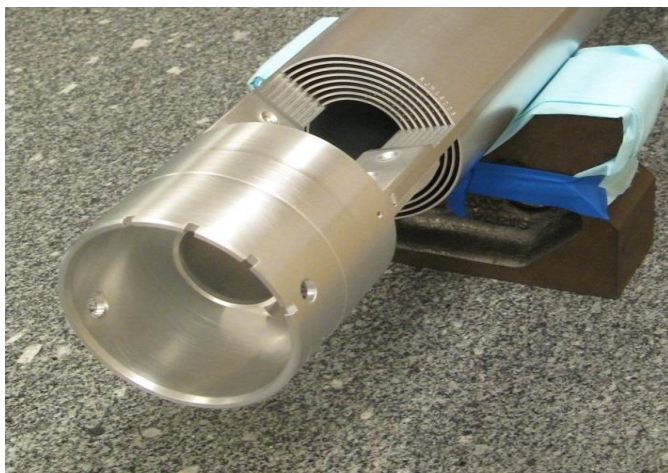
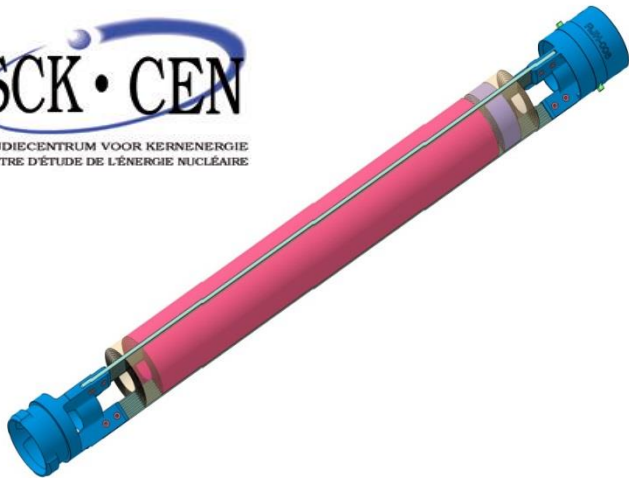
Heat Exchangers
(Spanish partner)

Rack for fuel elements



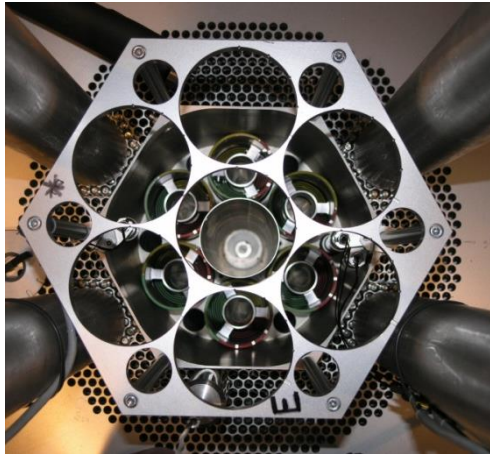
5. Status of the reactor construction

JHR Fuel qualification (EVITA Program performed in BR2 reactor)

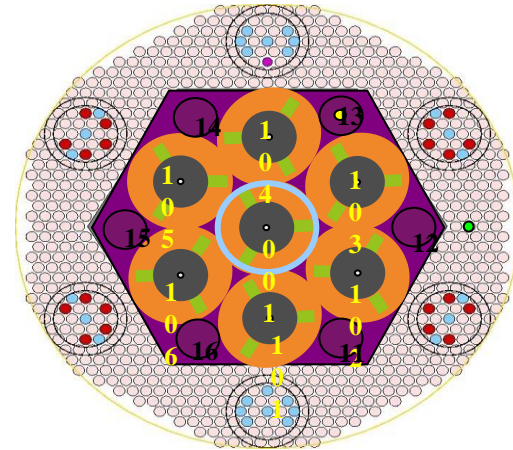


5. Status of the reactor construction

Development and experimental validation of a new calculation scheme for JHR



AMMON program performed in EOLE reactor (2010-2013) :
provided relevant experimental data for the qualification of the main JHR safety and design parameters



AMMON « reference » configuration

Neutron/photon parameter	Experimental uncertainty (1σ)
Core excess reactivity	± 12 pcm
Hafnium reactivity worth	$< \pm 0.5\%$ (critical state technique) $\pm 5\%$ (MSM technique)
Assembly power	$\pm 1\%$
Plate power density	$\pm 1\%$
Axial plate power profile	± 1 to 1.5%
Azimuthal plate power profile	± 1 to 1.5%
Fuel plate modified conversion ratio	$\pm 2\%$
Spectrum indexes	± 1.8 to 3%
Effective delayed neutron fraction	± 19 pcm
Effective prompt neutron generation time	± 0.8 \$
Photon heating (TLDs/OSLDs)	± 4 to 4.5%

General conclusion

1. **Material Testing Reactors remains key-tools in R&D support for nuclear power industry**
2. **Research Reactors are now more “costly machines” than in the past...**
3. **Considering the increasing complexity of the experiments (due to enhanced requirements from simulation) the use of international platform (as will be JHR) is recommended**
4. **Innovative in-core instrumentation is a key for the quality and attractiveness of future MTR experimental programs, together with Post-Irradiation Analysis capabilities**

French alternative energies and atomic energy commission
Cadarache | F-13108 Saint-Paul-lez-Durance | France
T. +33 (0)4 42 25 79 62 | F. +33 (0)4 42 25 78 76
Etablissement public à caractère industriel et commercial
RCS Paris B 775 685 019

Nuclear Energy Division
Reactor Studies Department
Experimental Physics Section
Instrumentation Sensors and Dosimetry Laboratory