

**EAA 2019**  
25 years

*Beyond Paradigms*

**BERN**  
4-7 September

Session 73: Messy methods: Heritage studies and the quest for multi-methodological approaches

What does the human geography bring to the analysis of heritage processes?

[melanie.duval@univ-smb.fr](mailto:melanie.duval@univ-smb.fr)

[ana.brancelj@univ-smb.fr](mailto:ana.brancelj@univ-smb.fr)

[christophe.gauchon@univ-smb.fr](mailto:christophe.gauchon@univ-smb.fr)



ROCK ART RESEARCH INSTITUTE  
UNIVERSITY OF THE WITWATERSRAND  
Private Bag 3, WITS 2050, Johannesburg, South Africa

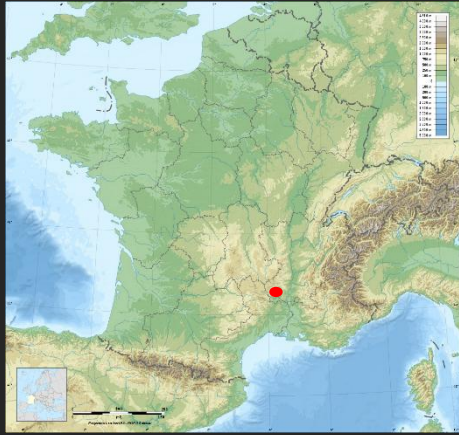
# What does it mean « human geograhhy »?

- A discipline focus on « space » and « place ». How societies shape the space? How connections between different scales model space?
- The space as a social production, revealing choices.
- Protected areas / protected places: Why does it have this shape? What this zoning teaches us in terms of stakeholders negotiation processes? In terms of Heritage Discourses contents and attributed values?

# The main tools and methodologies used by the human geography

- Field observations
- Discourses (written and oral materials)
- Maps
  
- Comparative approach
- Chrono-systemic approach

# Chauvet Cave example



### Éléments de localisation

- Route principale
- Voie ferrée
- Limites départementales
- Espace bâti
- Cours d'eau principal
- Indication directionnelle

### Zonages

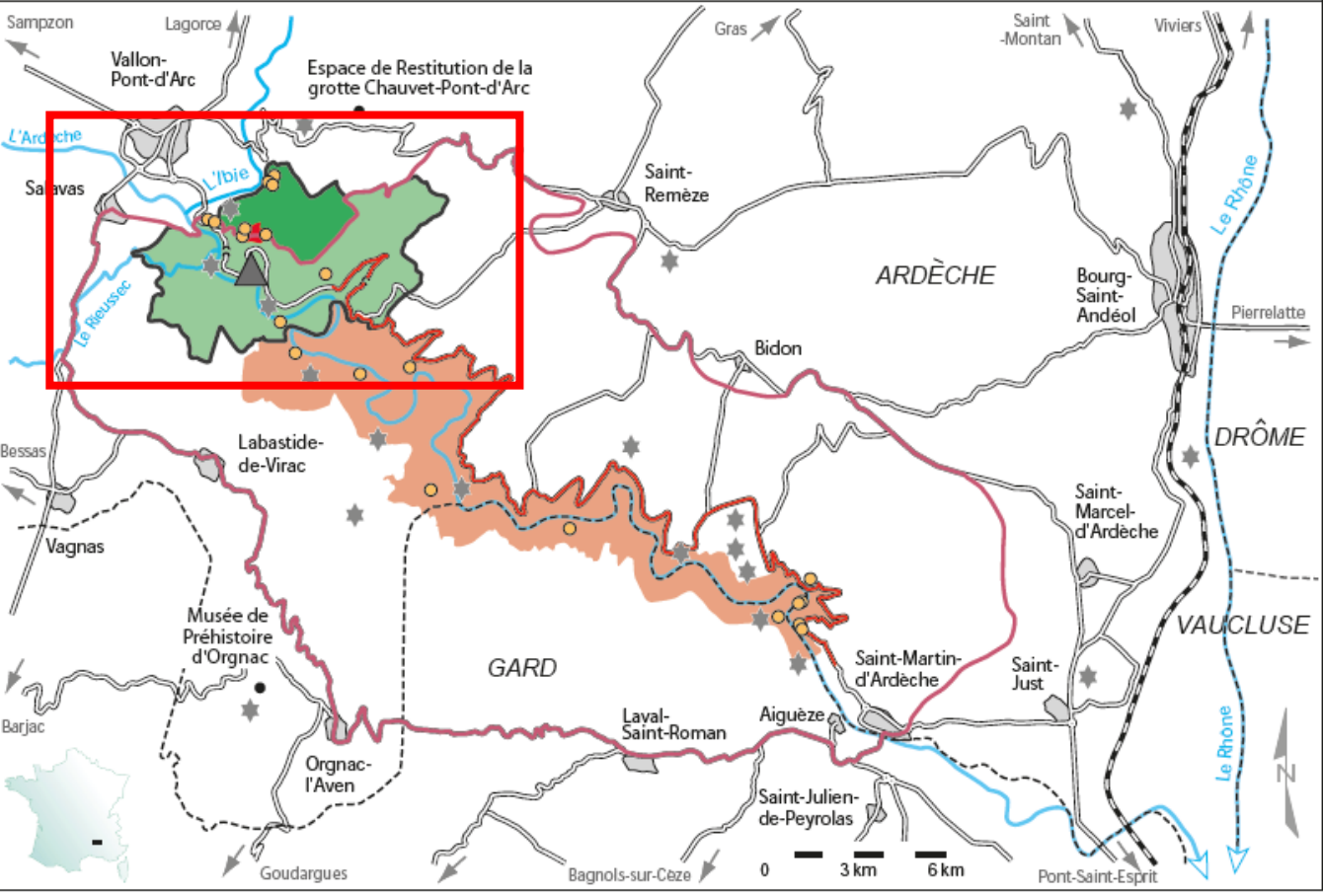
- Emprise des parcelles comprenant la grotte Chauvet, classées Monument Historique (1995)
- Réserve naturelle des gorges de l'Ardèche (1980)
- Site classé du pont d'Arc (1982)
- Extension du site classé des abords du Pont d'Arc (2012)
- Périmètre d'intervention de la première OGS (1993) d'après Diren Rhône-Alpes, octobre 2006
- Périmètre retenu pour la relance de l'OGS (2012)

### Éléments de l'offre touristique

- Espace muséographique en lien avec la préhistoire
- Route touristique des gorges de l'Ardèche (ouverture en 1969)
- Le pont d'Arc

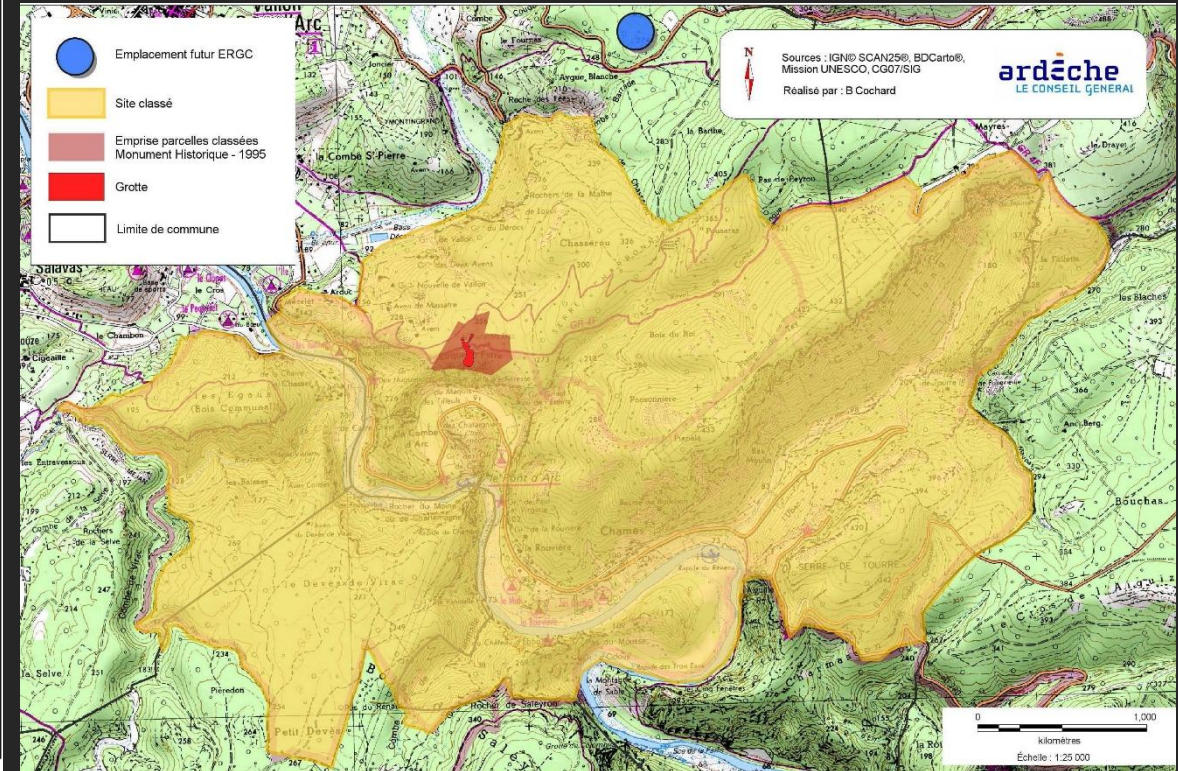
### Sites du Paléolithique supérieur

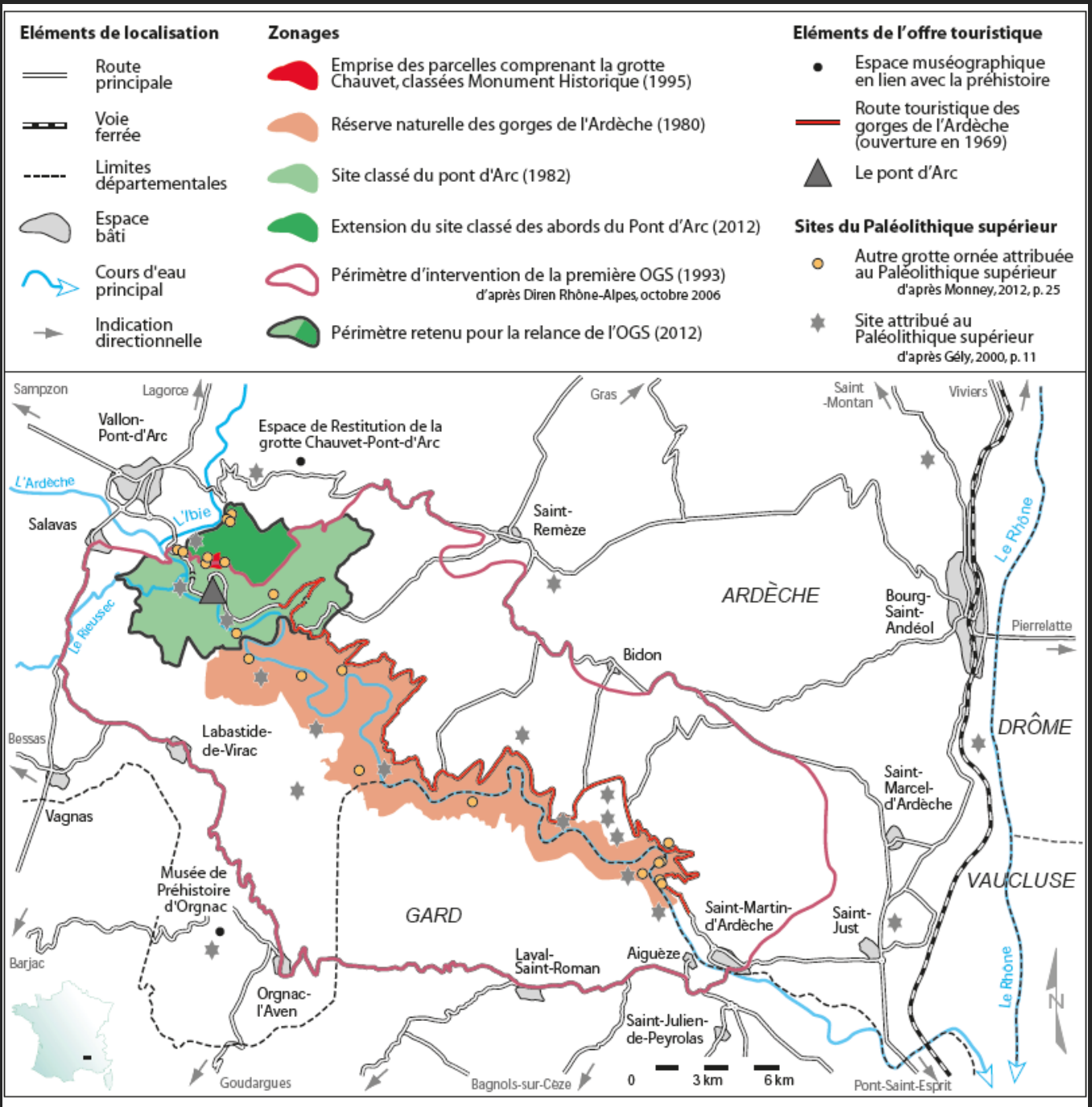
- Autre grotte ornée attribuée au Paléolithique supérieur d'après Monney, 2012, p. 25
- Site attribué au Paléolithique supérieur d'après Gély, 2000, p. 11



I/ What has been inscribed on Unesco list?

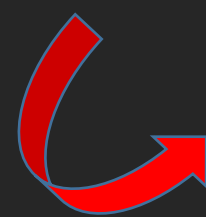
The land surface of the cave as a cultural property



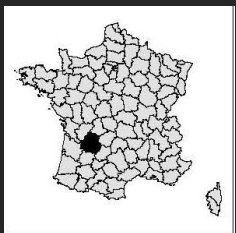


I / What has been inscribed on Unesco list?

II / Would it have been possible to inscribe another type of property for Unesco World Heritage?



Contributions of a comparative approach

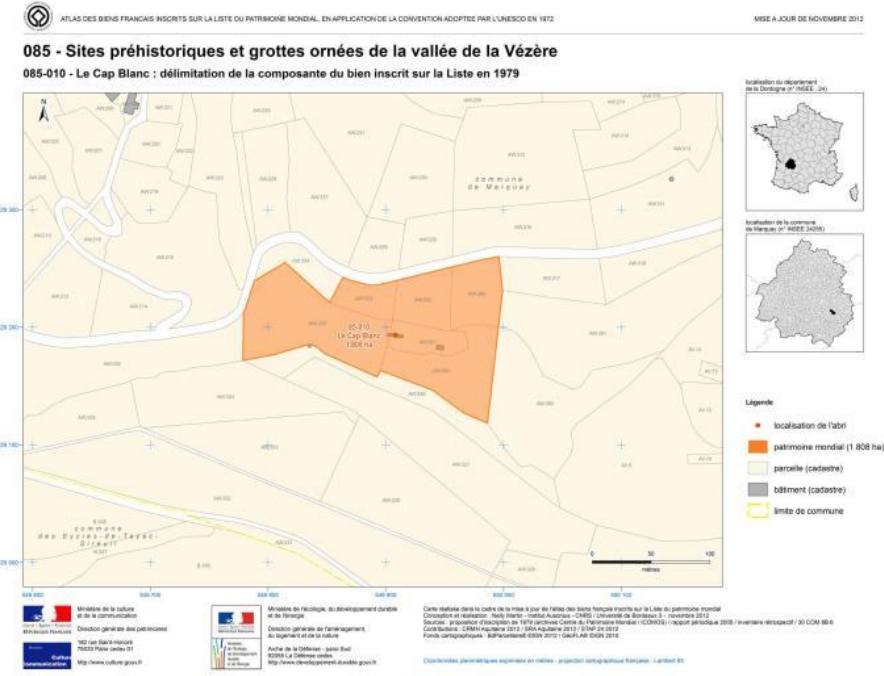
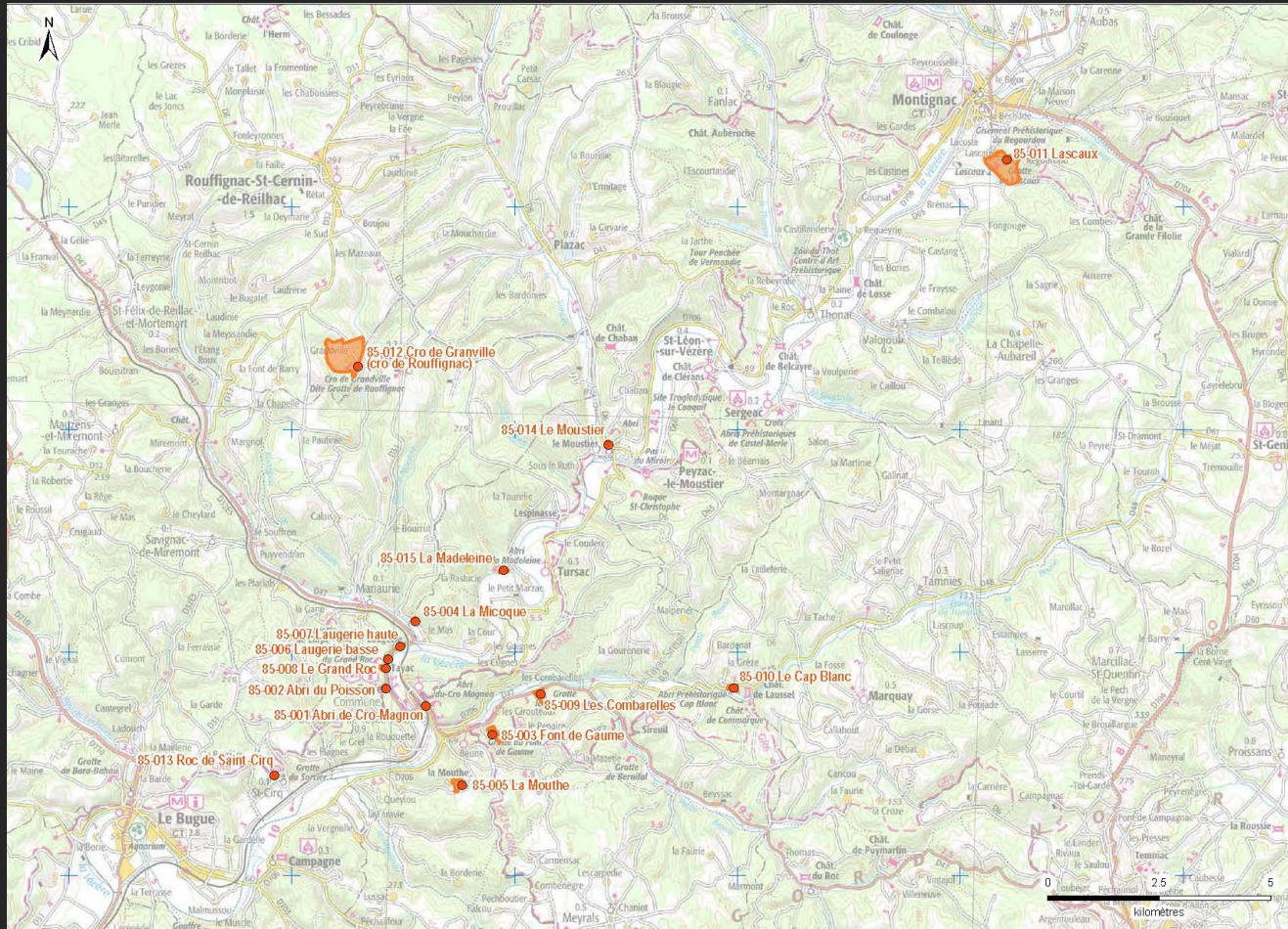
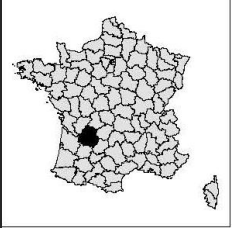


## Vézère Valley : serial property

Selection of 15 prehistoric sites among more than 180 sites  
(deposits and rock art caves)



# Vézère Valley : serial property Selection of 15 prehistoric sites among more than 180 sites (deposits and rock art caves)

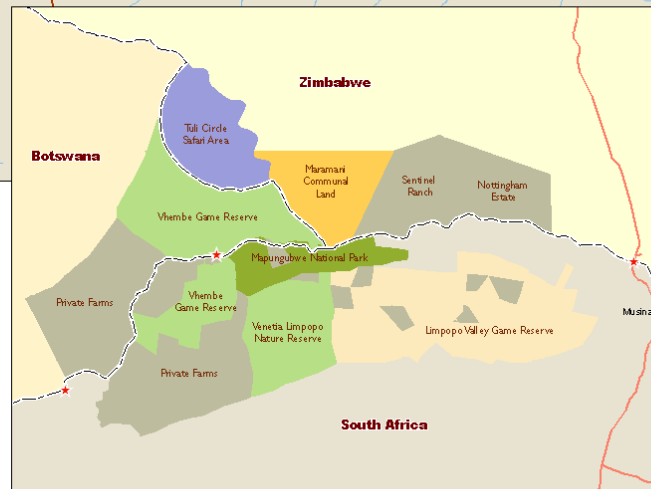




# Mapungubwe : cultural landscape



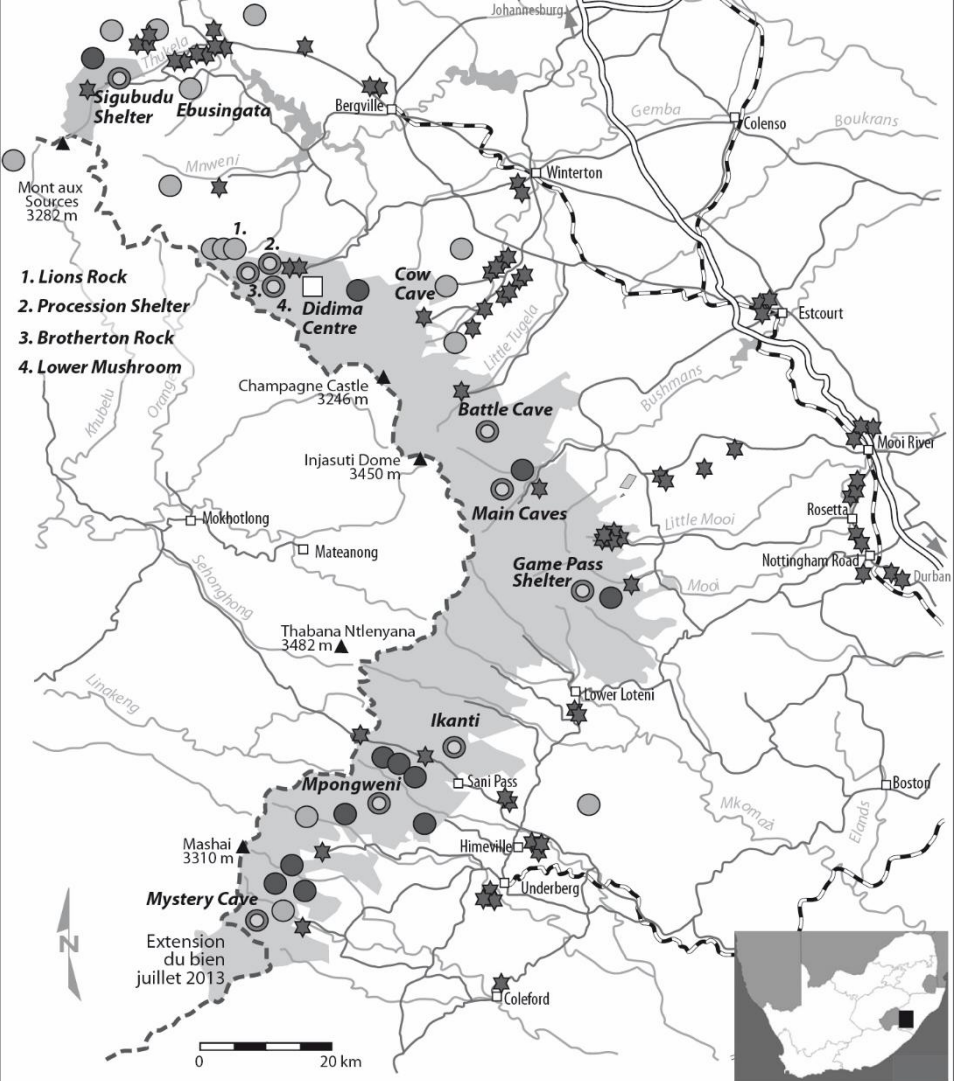
- Legend**
- No-entry points
  - Bird hide
  - Border control
  - Camp
  - Camping site
  - Tented camp
  - Cultural site
  - Day visitors site
  - Game hide
  - Gate
  - Interpretive centre
  - Interpretive site
  - Lodge
  - Main view point
  - Other view points
  - Pump station
  - Staff accommodation
  - Tree-top walk
  - Water hole
  - Tourist roads
  - Management roads
  - Public roads
  - Public roads - secondary
  - Runways
  - Fence line (April 2005)
  - Perennial rivers
  - Present negotiations
  - SANParks

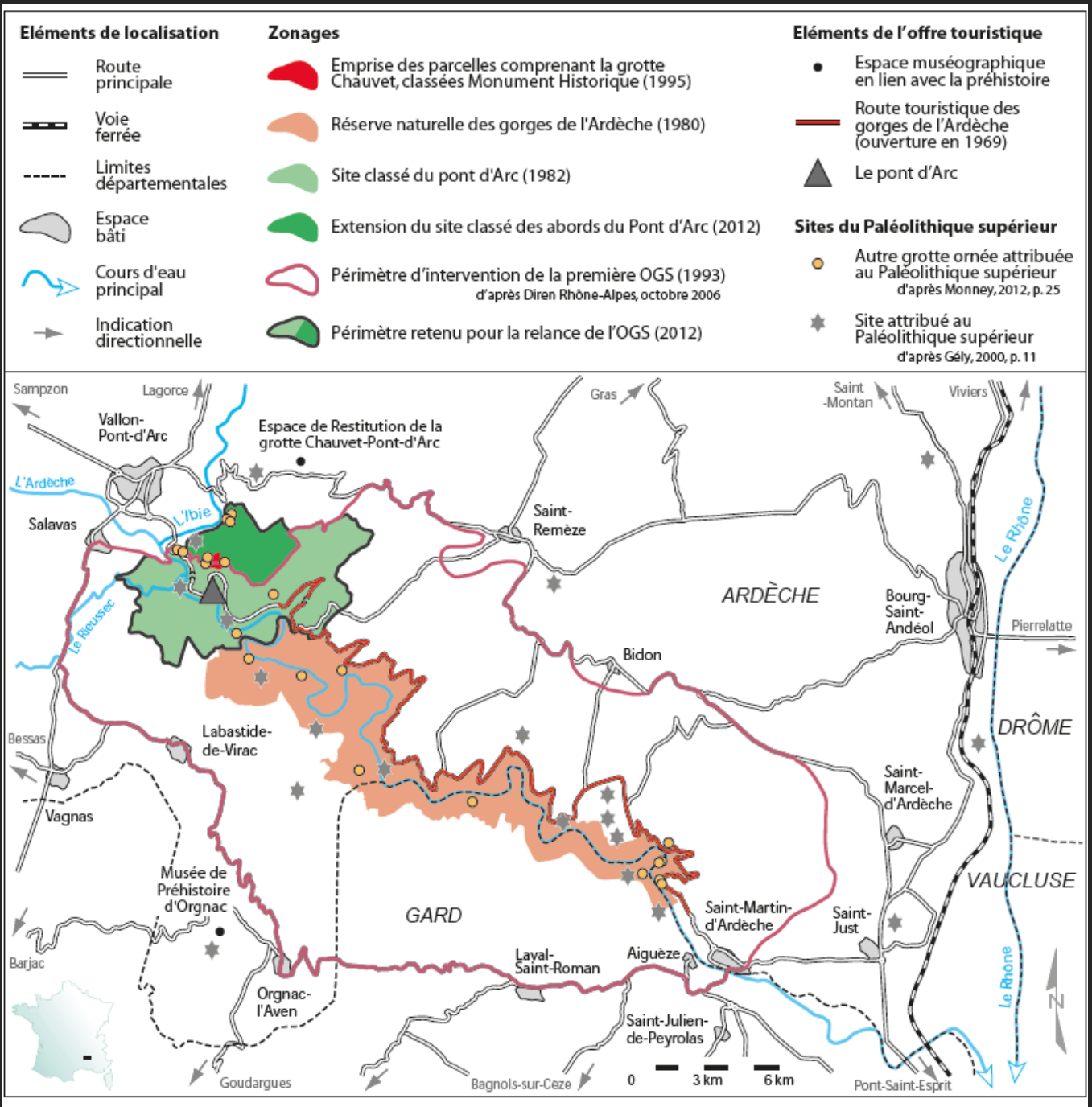


**MAPUNGUBWE NATIONAL PARK**



# Maloti-Drakensberg : mixed property



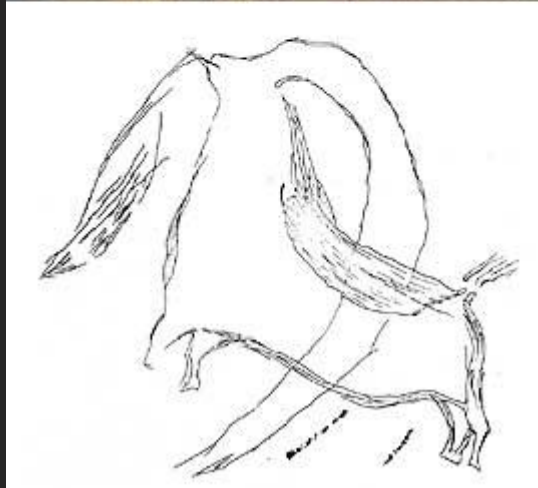
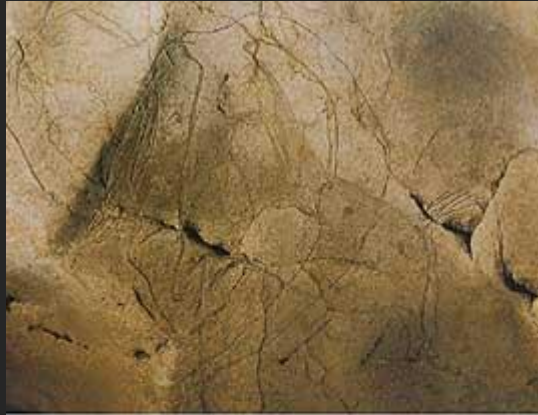


I / What has been inscribed on Unesco list?

II / Would it have been possible to inscribe another type of property for Unesco World Heritage?

Yes !

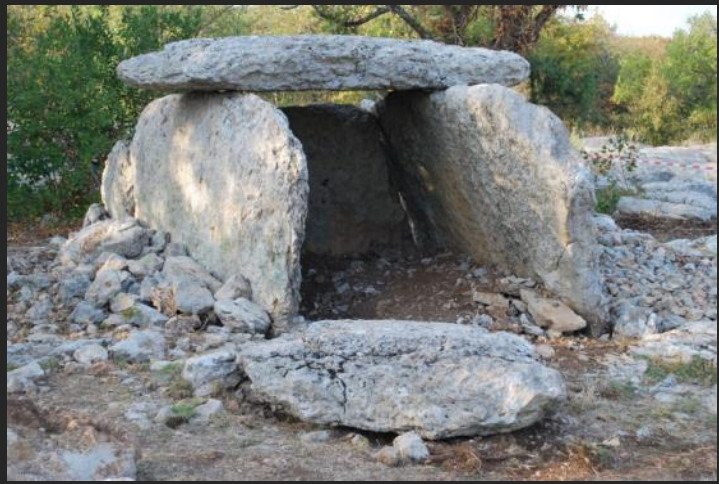
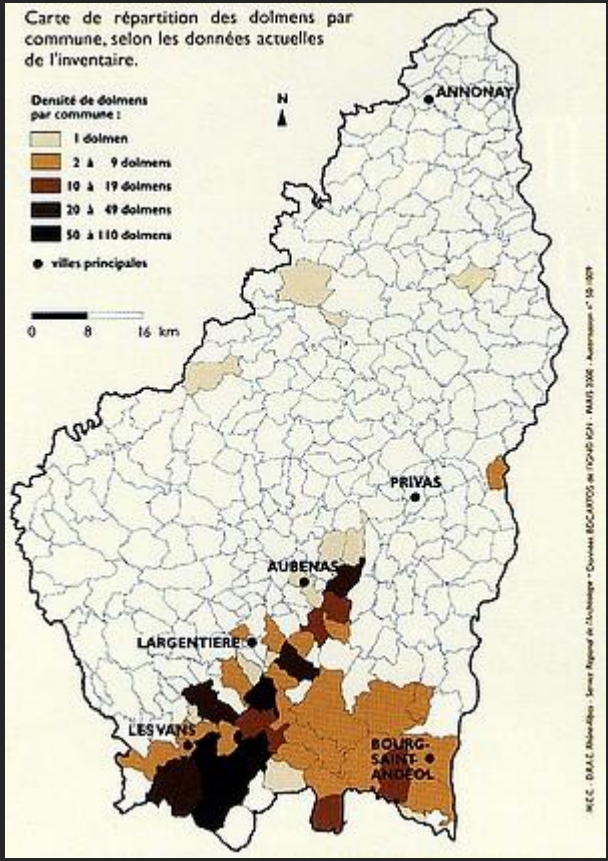
## Grotte des deux ouvertures



## Grotte de la tête du lion



Carte de répartition des dolmens par commune, selon les données actuelles de l'inventaire.



Place

Serial

Area

Cultural  
property

Cavalier de Madara  
(i, iii)

**Chauvet**  
(i, iii)

Sites préhistoriques  
et grottes ornées  
de la vallée de la Vézère  
(i, iii)

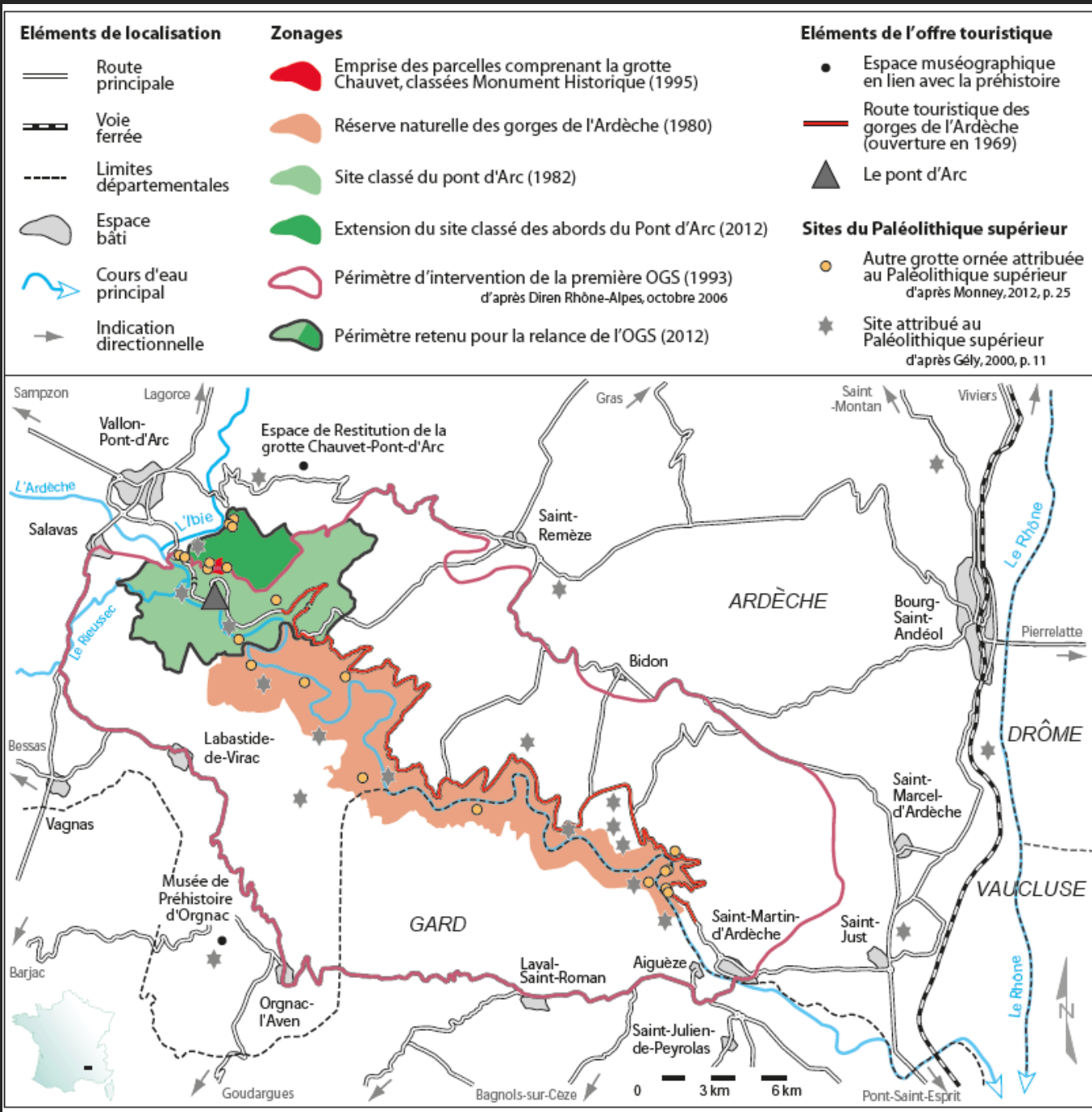
Grotte d'Altamira et art  
rupestre paléolithique  
du nord de l'Espagne  
(i, iii)

Paysage culturel  
du Mapungubwe  
(ii, iii, iv, v)

Mixed  
property

uKhahlamba /  
Parc du Drakensberg  
(i, iii, vii, x)

Parc national  
de Kakadu  
(i, vi, vii, ix, x)



I/ What has been inscribed on Unesco list?

II / Would it have been possible to inscribe another type of property for Unesco World Heritage?

III/ What this zoning teaches us in terms of stakeholders negotiation processes and attributed values?

- Stakeholders negotiations processes : Ministries of Culture/ Environment
- Adequacy with the production of a management plan in order to minimize the potential for conflict, especially around the pont d'Arc
- Rock Art caves perceived as a “historical monument”, without taking into account the relations between the art and his surrounding landscape





# Conclusions

- Geogaphy is relevant to analyse how far heritage processes express choices done by a society in a cultural context (unit of time and space)
- A similar approach may be developed in other heritage objects, « natural » or « cultural »





807 pile dwellings sites



111 pile dwellings sites

Selection process, gouvernance issues, tourism development : Ana Brancelj Phd