



Prealbumin, platelet factor 4 and S100A12 combination at baseline predicts good response to TNF alpha inhibitors in rheumatoid arthritis

Minh Vu Chuong Nguyen, Athan Baillet, Xavier Romand, Candice Trocme, Anaïs Courtier, Hubert Marotte, Thierry Thomas, Martin Soubrier, Pierre Miossec, Jacques Tebib, et al.

► To cite this version:

Minh Vu Chuong Nguyen, Athan Baillet, Xavier Romand, Candice Trocme, Anaïs Courtier, et al.. Prealbumin, platelet factor 4 and S100A12 combination at baseline predicts good response to TNF alpha inhibitors in rheumatoid arthritis. *Joint Bone Spine*, 2019, 86 (2), pp.195-201. 10.1016/j.jbspin.2018.05.006 . hal-02416032

HAL Id: hal-02416032

<https://hal.science/hal-02416032>

Submitted on 22 Oct 2021

HAL is a multi-disciplinary open access archive for the deposit and dissemination of scientific research documents, whether they are published or not. The documents may come from teaching and research institutions in France or abroad, or from public or private research centers.

L'archive ouverte pluridisciplinaire **HAL**, est destinée au dépôt et à la diffusion de documents scientifiques de niveau recherche, publiés ou non, émanant des établissements d'enseignement et de recherche français ou étrangers, des laboratoires publics ou privés.



Distributed under a Creative Commons Attribution - NonCommercial 4.0 International License

Minh Vu Chuong Nguyen^{1,11}, Athan. Baillet^{1,2}, Xavier Romand^{1,2}, Candice Trocmé³, Anaïs Courtier¹¹, Hubert Marotte^{4,5}, Thierry Thomas^{4,5}, Martin Soubrier⁶, Pierre Miossec⁷, Jacques Tébib⁸, Laurent Grange², Bertrand Toussaint^{3,9}, Thierry Lequerré¹⁰, Olivier Vittecoq¹⁰, Philippe Gaudin^{1,2}

1. Univ. Grenoble Alpes, GREPI, EA 7408, 38400, Saint-Martin-d'Hères, France
2. Rheumatology Department, Centre Hospitalier Universitaire Grenoble Alpes, Hôpital Sud Echirolles, 38130 Echirolles, France
3. Centre Hospitalier Universitaire Grenoble Alpes, Hôpital Michallon Pôle Biologie, 38700 La Tronche, France
4. Department of Rheumatology, Saint-Etienne University Hospital, 42270 Saint-Etienne, France
5. INSERM 1059, SAINBIOSE University of Saint-Etienne, 42270 Saint-Etienne, France
6. Centre Hospitalier Universitaire Clermont-Ferrand, Service de Rhumatologie, Hôp G Montpied, 63003 Clermont-Ferrand, France
7. Department of Immunology and Rheumatology, Immunogenomics and Inflammation Research Unit EA 4130, University of Lyon, Edouard Herriot Hospital, 69003 Lyon, France
8. Rheumatology Department, Centre Hospitalier Lyon-Sud, 69310 Pierre-Bénite, France
9. TIMC-IMAG Laboratory UMR 5525, CNRS, Université Grenoble Alpes, Grenoble 38041, France
10. Normandie Univ, UNIROUEN, Inserm U 1234, Rouen University Hospital, Department of Rheumatology Inserm CIC/CRB1404, 76031 Rouen Cedex, France
11. Sinnovial, 38000 Grenoble, France

Correspondence : A. Baillet, Address: Hôpital Sud, CHU Grenoble Alpes, 19 avenue de Kimberley, 38130 Echirolles, France. E-mail: ABaillet@chu-grenoble.fr

Abstract

Objectives: Tumour necrosis factor-alpha inhibitors (TNFi) are effective treatments for Rheumatoid Arthritis (RA). Responses to treatment are barely predictable. As these treatments are costly and may induce a number of side effects, we aimed at identifying a panel of protein biomarkers that could be used to predict clinical response to TNFi for RA patients.

Methods: Baseline blood levels of C-reactive protein, platelet factor 4, apolipoprotein A1, prealbumin, α 1-antitrypsin, haptoglobin, S100A8/A9 and S100A12 proteins in bDMARD naive patients at the time of TNFi treatment initiation were assessed in a multicentric prospective French cohort. Patients fulfilling good EULAR response at 6 months were considered as responders. Logistic regression was used to determine best biomarker set that could predict good clinical response to TNFi.

Results: A combination of biomarkers (prealbumin, platelet factor 4 and S100A12) was identified and could predict response to TNFi in RA with sensitivity of 78%, specificity of 77%, positive predictive values (PPV) of 72%, negative predictive values (NPV) of 82%, positive likelihood ratio (LR+) of 3.35 and negative likelihood ratio (LR-) of 0.28. Lower levels of prealbumin and S100A12 and higher level of platelet factor 4 than the determined cutoff at baseline in RA patients are good predictors for response to TNFi treatment globally as well as to Infliximab, Etanercept and Adalimumab individually.

Conclusion: A multivariate model combining 3 biomarkers (prealbumin, platelet factor 4 and S100A12) accurately predicted response of RA patients to TNFi and has potential in a daily practice personalized treatment.

Keywords: Biomarkers, Rheumatoid arthritis, TNF α inhibitor, Etanercept, Adalimumab, Infliximab, Prediction, prealbumin, platelet factor 4, S100A12.

1. Introduction

Rheumatoid Arthritis (RA) is a frequent inflammatory chronic disease characterized by joint inflammation leading to joint destruction which is responsible of functional disability [1]. Biologic disease-modifying anti-rheumatic drugs (bDMARD) such as tumor necrosis factor- α inhibitors (TNFi) have completely changed the outcomes and the prognosis of patients suffering from RA. Nowadays we have access to a broader range of DMARDs targeting different molecular mechanisms such as TNF α , B cells, T cells, anti-IL6 or Janus Kinase pathways. Those new molecules appeared to be as effective as TNFi [2]. Nevertheless despite the overall improvement of quality of life, around 30%-50% of patients do not respond to bDMARDs [3] and some patients respond to TNFi and other rather to non-TNFi biotherapy without known reason [4]. European League Against Rheumatism (EULAR) recommends the prescription of bDMARD in RA patient with insufficient response to conventional synthetic DMARD (csDMARD) [5]. Currently rheumatologist does not have evidence-based knowledge to choose the most suitable bDMARD for his patients and these biologics are often prescribed in a 'trial-and-error' manner. From this situation non-responders are unnecessarily exposed to undesired side-effects along with the worsening of their physical condition. Furthermore, the ineffective use of biologics has a dramatic burden on the medico-economic resources regarding the important cost of these treatments [6]. Thus the major current challenge in RA therapy is being able to predict drug responsiveness *prior* to treatment initiation [7] mainly by identifying relevant predictive biomarkers.

In a previous study we observed two distinct protein profiles in RA patients associated with a good or bad response to infliximab [8]. Apolipoprotein A-1 was predictive of a good response to infliximab, whereas platelet factor 4 was associated with non-responders [8] suggesting the possibility of a personalized treatment strategy. We have previously identified S100A8/A9 proteins, involved in the inflammatory response in RA, as biomarkers allowing discriminating RA subjects from other miscellaneous inflammatory arthritides subjects [9]. Furthermore dimer S100A8/A9 has been reported as good predictive biomarker to etanercept in RA [10]. Haptoglobin, α -1 antitrypsin, C-reactive protein (CRP) and prealbumin which are involved in inflammatory processes and/or described in RA [11–14] may represent potential predictive biomarkers.

In this study, we aimed to identify predictive biomarkers allowing generating an algorithm capable of discriminating good responders to TNFi (adalimumab (ADA), etanercept (ETN) and infliximab (IFX)) in RA before treatment initiation.

2. Methods

2.1. Patient samples and study design

Fifty-three RA patients were included in a French multicentric (Grenoble, Saint-Etienne, Clermont-Ferrand, and Lyon) prospective study approved by the Medical Ethics Committee of the institute (04PHR06) and registered in Agence nationale de sécurité du médicament et des produits de santé (ANSM) (number 050218). This number of patients was considered as relevant since sample size calculation indicated that 39 patients was sufficient to detect a high area under the curve (AUC) value above 0.75. All patients (i) were naïve from bDMARD, (ii) fulfilled the 1987 American college of - Rheumatology (ACR) criteria for RA [15] and displayed (iii) either contraindication or insufficient response to conventional synthetic (cs)DMARD or nonsteroidal anti-inflammatory drugs. The type of TNFi therapy were left to the discretion of the rheumatologist. Plasma samples were collected before the initiation of the TNFi treatment and did not modify biomedical or health-related outcome of the patient. Patients were evaluated clinically at baseline and 6 months of treatment. Within the RA cohort, 12 patients were given IFX 3 mg/kg at week 0, 2, 6 and every 8 weeks thereafter; 14 received ETN 50 mg/week, and 27 patients were treated with ADA 40 mg/14 days.

2.2. Assessment of clinical response

Demographic parameters and disease activity were collected at baseline and 6 months following TNFi instauration using the disease activity score (DAS-ESR) in 28 joints [16]. Response to TNFi treatment was assessed by the EULAR criteria, based on the 28-joint disease activity score (DAS28) [17]. The patients were categorized into responders and non-responders based on the change in the EULAR response [18]. Patient is considered as responder (R) in case of good EULAR response and as non-responder (NR) in case of moderate or absence of EULAR response.

2.3. Assessment of blood biomarkers

Plasma collection protocol was standardized and homogeneously performed in all hospital centers participating to the study. Briefly, blood was collected in EDTA tube (Becton Dickinson) and centrifuged at 1,800 g for 10 minutes at room temperature. Plasma was aliquoted in presence of proteases inhibitors (Complete EDTA free protease inhibitor cocktail – Roche) and frozen at -80°C. Baseline plasma levels of apolipoprotein A1, haptoglobin, prealbumin, C-reactive protein and α -1 antitrypsin were evaluated by nephelometry on a Dimension Vista[®] lab system (Siemens Healthcare). Platelet factor 4 (PF4) (Abcam[®]), S100A12 (CircuLex[™]), and S100A8/S100A9 (Hycult) dimer were evaluated using commercial ELISA kits according to the manufacturers' instructions.

2.4. Statistics

Biomarkers and demographic characteristics at baseline were compared using Fisher's exact test and the Mann–Whitney non-parametric test. The associations between baseline biomarkers and clinical response at 6 months were tested in univariate and multivariate logistic regression models. Biomarker values were log transformed to reach normal distribution and were analyzed through quantitative and dichotomized values. Dichotomization into high or low values was based on median. Biomarkers with a $p < 0.20$ and AUC (Area Under the Curve) > 0.6 in univariate logistic regression test were selected and combined into a multivariate model. Multivariate logistic regression with stepwise forward selection was performed to build the final combined model. Using the fitted model, a probability of response could be obtained for any patient by applying the logistic function ($\exp(L)/(1+\exp(L))$) in which the estimated logit L was calculated from the coefficients of the regression model. Model performances were studied using Receiver Operating Characteristic (ROC) curves and the AUC calculation. Sensibility, specificity, positive and negative predictive values and likelihood ratios were calculated based on the optimal cut-off (Youden's Index). Exact binomial confidence limits are calculated for test sensitivity, specificity, and positive and negative predictive value. Confidence intervals for positive and negative likelihood ratios are based on formulae provided by [19].

2.5. Bootstrapping

The performance of a predictive model is overestimated when calculated on the sample used to construct the model. More accurate estimations of performance can be obtained with internal validation methods, and more particularly with bootstrap methods which provided stable estimates with low bias. Bootstrapping relies on random sampling with replacement from the original data set, of the same size as the original data set. The approach used here to internally validate the model is described by Frank Harrell and colleagues [20] and implemented in rms package (R software). First, a bootstrap sample, with replacement, was taken. The logistic model was fitted to this bootstrap dataset. This model was evaluated in the bootstrap sample and in the original sample. The difference between performances in the bootstrap sample and in the original sample represents an estimate of the optimism. This difference was averaged to obtain a stable estimate of the optimism, on about a thousand of bootstrap samples. This estimate of optimism was then subtracted from the naïve estimate of predictive ability, to obtain an optimism adjusted measure.

2.6. Role of the funding source

Data collection, data analysis, data interpretation, manuscript preparation, decision to publish was independent from the study funding.

3. Results

3.1. Study population

A total of 53 RA patients were included in this study. After 6 months of TNFi (adalimumab, etanercept or infliximab) treatment, 43% (n = 23) of RA patients were judged as responders and 57% (n = 30) as non-responders to anti-TNF α treatment. Baseline demographic, clinical and biological data of responders' and non-responders' populations were similar in the whole cohort (**Table 1**) and among patients treated with each bDMARD [Appendix A, Table S1; See the supplementary material associated with this article online];

showing that in this group, no classical marker of RA severity and aggressiveness could predict the patient response to a TNFi therapy.

3.2. Biomarker's distribution between responders and non-responders in the study population

To explore whether apolipoprotein A1, haptoglobin, prealbumin, C-reactive protein, α -1 antitrypsin, platelet factor 4, S100A12 and S100A8/S100A9 were differentially expressed between responders from non-responders we first compared baseline level of these 8 biomarkers between these two populations. Responders and non-responders baseline medians were presented in Appendix A table S2. No differences were observed for α -1 antitrypsin, apolipoprotein A1, CRP, S100A8/A9 and haptoglobin with a *p-value*>0.3 (Appendix A, **Figure S1**). Although the differences were not significant we observed a trend for prealbumin, S100A12 and PF4 with a *p*-value close to 0.05 (**Figure 1 A, B and C**).

3.3. Univariate analysis: Prealbumin, PF4 or S100A12 exhibit potential predictive ability in the plasma of RA patients before anti-TNF α therapy

To evaluate the predictive value of each biomarker we performed a univariate logistic regression analysis. Predictor variables were examined through quantitative values and dichotomized values of each biomarker. The quantitative analysis revealed that only prealbumin and PF4 demonstrated a *p-value* lower than 0.1 while the qualitative analysis using median as cut-off value showed a *p-value* of 0.072 for S100A12 (**Table 2**). Furthermore AUC-ROC of PF4, prealbumin and S100A12 were respectively 0.64, 0.65 and 0.64 (**Figure 1 D**).

3.4. Multivariate analysis: Prealbumin, PF4 and S100A12 combination exhibit discriminative power to differentiate future responders from non-responders to TNFi therapy

Since univariate analysis revealed that PF4, prealbumin and S100A12 could represent interesting biomarkers to discriminate future R from NR they were added to build the multivariate model.

A probability of response for each patient was calculated from the coefficients of the regression and allowed good discriminative ability to classify patients in responder's or non-responder's group with an AUC-ROC of 0.76 compared to that obtained when biomarkers were analyzed separately (**Figure 1 D**). After determining the optimal cut-off using the Youden index at 0.45, sensitivity was 78% (Confidence Interval (CI), 95% CI: 56 –

93), specificity 77% (95% CI: 58 – 90), positive predictive values (PPV) 72% (95% CI: 51 – 88), negative predictive values (NPV) 82% (95% CI: 63 – 94), positive likelihood ratio (LR+) of 3.35 (95% CI: 1.69 – 6.64) and negative likelihood ratio (LR-) of 0.28 (95% CI: 0.13 – 0.63). To evaluate the overfitting in measures of our model we used a bootstrap method as indicated in the method session. We obtained an optimism-adjusted AUC value of 0.72 demonstrating that the discriminative ability of our model was still conserved.

Finally, we investigated whether the combination of prealbumin, PF4 and S100A12 was able to predict clinical response for each biologic separately. As observed for the whole cohort, combination of prealbumin, PF4 and S100A12 exhibited similar predictive value for IFX (AUC-ROC=0.75), ETN (AUC-ROC=0.77) and ADA (AUC-ROC=0.78) (**Figure 2 and table 3**).

4. Discussion

In this study we identified 3 biomarkers, *i.e.* prealbumin, PF4 and S100A12, whose combination predicted good EULAR response to IFX, ADA and ETN in RA patient with inadequate response to csDMARDs. Several studies attempted to determine biomarkers for prediction to bDMARD and proteomic approach was often used to characterize differentially expressed proteins among patient proteome profile [8], as the mechanism-based genomic [21], cellular settings [22], and cytokine profiling [23] approach often lead to the confirmation of the up- or down regulation of biomarkers but with a limited diagnostic value. Most of the studies focused on single biomarker to predict TNFi response but the results are often discordant [24]. For example, Marotte *et al.* found that the circulating TNF-alpha bioactivity was higher in good responders to infliximab. However other studies found no association between TNF-alpha and the response status to TNFi [12,25].

Recent studies addressed the predictive response to biologic by biomarker analysis at baseline. Obry *et al.* [26] used such an approach to characterize the biomarkers associated with the response or the non-response to etanercept in RA. A total of 7 biomarkers were associated with good response to etanercept. The combination of only two of them (complement component 7, CO7 and vitamin K-dependent protein S, PROS) permitted to improve the identification of responders and non-responders with a sensitivity of 88.9% and a specificity of 100%. This strategy of combining biomarkers appears very interesting to improve the accuracy to predict TNFi

response and our study confirm this. Our approach demonstrated that isolated assessment of biomarker concentration does not allow discriminating at baseline TNFi responder from non-responder whereas specific combination identified through a systematic approach could lead to the generation of a predictive algorithm. More interestingly our predictive model based on the combination of prealbumin, PF4 and S100A12 could not only discriminate future responders to a class of bDMARD such as TNFi but also showed similar predictive performance to IFX, ADA and ETN taken individually. This suggests that those 3 proteins belong to a common pathway to those 3 TNFi even though the mechanism of inhibition are different, monoclonal antibodies for IFX and ADA and TNF decoy receptor for ETN, as well as their efficacy [27]. However, this observation should be tempered because of the low number of patients included for each biomarker separately explaining the large range of CI observed for the model characteristics.

A few limitations should be emphasized. First external validity of this promising combination of prealbumin, PF4 and S100A12 to predict good EULAR response to IFX, ADA and ETN when combined rather than used separately, in RA patient with inadequate response to conventional synthetic DMARDs should be examined. In order to estimate the external validity of this biomarker combination we undertook a statistical analysis by bootstrap method, which results suggest a promising potential of external validity. However, the performance of this biomarker combination to predict good EULAR response need to be validated in an independent cohort. Second, canonical biomarkers of RA such as CRP were not included in our biomarker combination. Third, EULAR response was chosen as the main outcome measure to be in line with recent therapeutic strategies in [4]. We acknowledge that EULAR recommendation mentioned that treatment should be aimed at reaching remission or low disease activity in every RA patient [28,29]. However, a significant proportion of patients in clinical practice do not reach remission [30], therefore we used EULAR response to bDMARD as the primary outcome rather than remission or low disease activity as primary outcome.

Platelet factor 4 (PF4 or CXCL4) is a chemokine classically described as secreted only by activated platelets but recent study show a monocyte and macrophage production [31,32]. PF4 acts on monocyte and induce the release of TNF α [33]. PF4 with TNF α together play an important role to potentiate native immune response. In RA patient, several studies reported an increase of PF4 in synovial fluid [34], serum [35] and synovial tissue [32]. S100A12 is a protein secreted by activated neutrophils and macrophages. S100A12 is an interesting biomarker of

phagocyte activation and inflammation [36]. This protein active mast cells and induced production of pro-inflammatory cytokines : IL6, IL8 and TNF α [37]. It has been showed that in return TNF α up-regulate transiently S100A12 gene expression [38] and trigger the secretion of S100A12 by neutrophils [39]. Some studies found an overexpressed of S100A12 in synovial fluid and serum in RA patients and this protein is correlated with clinical, inflammatory markers and US score in RA patients [9,40,41]. Our data demonstrated that responder's patients exhibited a lower S100A12 expression probably due to a better efficacy of TNF blockade in those patients. Interestingly two studies reported that S100A12 mRNA in patient PBMC [42] and protein expression level in serum decreased in patients who responded to TNFi treatment [40]. Prealbumin, also known as transthyretin, is a biomarker of malnutrition and has been reported in RA. Indeed, its levels in sera of patients with early RA were significantly increased compared to that of healthy control [14]. Prealbumin has been identified as one of the protein that showed significantly up regulated expression in the plasma of RA patients. Most importantly, the increase in expression of prealbumin with the progression of severity of RA condition has been observed [43]. The lower basal expression of prealbumin in patients that will respond to TNFi treatment observed in our study may indicate that those patients present a pathological status more suitable to respond to TNFi initiation.

Although the increasing burden of bDMARD on medico-economic resources are well recognized, only a few initiatives have been undertaken to design innovative tool for personalized medicine in the field of chronic inflammatory rheumatisms. Combination of multiple markers is a more promising approach to improve the performance of a predictive strategy in RA patients than hypothetico-deductive model that failed to provide any help for the prescription of bDMARD for more than a decade.

We demonstrated in our study with a limited number of patients that the strategy of multiple biomarkers combination (*i.e.* prealbumin, PF4 and S100A12) to generate a predictive algorithm has the potential to predict good EULAR response to a class of bDMARD such as TNFi. This will help physicians choosing the right bDMARD for the right RA patient, allowing to succeed the implementation of personalized medicine in daily practice.

Ethics approval and consent to participate

The study was approved by the local ethics committee (Comité de Protection des Personnes). All patients provided written informed consent.

Fundings

This study was funded by a grant from the Direction de la Recherche Clinique et de l'Innovation (DRCI), CHU – Grenoble Alpes. Role of the funding source: Data collection, data analysis, data interpretation, manuscript preparation, decision to publish were independent from the study funding.

Competing interest

AB, CT, and PG generated intellectual property that is owned by Grenoble Alpes University and Centre Hospitalier Universitaire Grenoble Alpes. AB and PG are co-founders of Sinnovial company. MVCN and AC are employees of Sinnovial company. TL reports grants from BMS and punctual interventions with personal fees from AbbVie, BMS, Janssen, Lilly, Merck, Novartis and Pfizer. OV has obtained grants from BMS, MSD and Pfizer and reports grants punctual interventions with personal fees from BMS, Pfizer, MSD, Abbvie, Roche-Chugai, Lilly, Novartis, Janssen and UCB. Data are protected by patent register number #FR1358503 and publication number #FR3010188.

Authors' contributions

PG conceived of the study, participated in its design and coordination, and critically revised the manuscript. AB participated in study design and coordination, and critically revised the manuscript. CT participated in study design and coordination of the samples dosages, and critically revised the manuscript. MVCN analyzed the data and drafted the manuscript. AC performed the statistical analysis and help to draft the manuscript. XR helped to

draft the manuscript. BT revised the manuscript. HM, TT, MS, PM, JT, LG, TL and OV supplied patient samples, collected clinical data, and revised the manuscript.

Acknowledgements

We thank the patients and staff members who participated in this study, the Centre d'Investigation Clinique (CIC) of the CHU Grenoble Alpes for their help in the data management and particularly Sylvie Papacatzis for her help in ELISA assays.

Appendix A. Supplementary data

Supplementary data (Figure S1, Tables S1-S3) associated with this article can be found in the online version at ...

References:

- [1] Maillefert JF, Combe B, Goupille P, Cantagrel A, Dougados M. Long term structural effects of combination therapy in patients with early rheumatoid arthritis: five year follow up of a prospective double blind controlled study. *Ann Rheum Dis* 2003;62:764–6.
- [2] Navarro-Millán I, Curtis JR. Newest clinical trial results with antitumor necrosis factor and nonantitumor necrosis factor biologics for rheumatoid arthritis. *Curr Opin Rheumatol* 2013;25:384–90.
- [3] Lipsky PE, van der Heijde DM, St Clair EW, Furst DE, Breedveld FC, Kalden JR, et al. Infliximab and methotrexate in the treatment of rheumatoid arthritis. Anti-Tumor Necrosis Factor Trial in Rheumatoid Arthritis with Concomitant Therapy Study Group. *N Engl J Med* 2000;343:1594–602.
- [4] Gottenberg J-E, Brocq O, Perdriger A, Lassoued S, Berthelot J-M, Wendling D, et al. Non-TNF-Targeted Biologic vs a Second Anti-TNF Drug to Treat Rheumatoid Arthritis in Patients With Insufficient Response to a First Anti-TNF Drug: A Randomized Clinical Trial. *JAMA* 2016;316:1172–80.
- [5] Smolen JS, Landewé R, Bijlsma J, Burmester G, Chatzidionysiou K, Dougados M, et al. EULAR recommendations for the management of rheumatoid arthritis with synthetic and biological disease-modifying antirheumatic drugs: 2016 update. *Ann Rheum Dis* 2017;76:960–77.
- [6] Meissner B, Trivedi D, You M, Rosenblatt L. Switching of biologic disease modifying anti-rheumatic drugs in patients with rheumatoid arthritis in a real world setting. *J Med Econ* 2014;17:259–65.
- [7] Marotte H, Miossec P. Biomarkers for prediction of TNF α blockers response in rheumatoid arthritis. *Jt Bone Spine Rev Rhum* 2010;77:297–305.
- [8] Trocmé C, Marotte H, Baillet A, Pallot-Prades B, Garin J, Grange L, et al. Apolipoprotein A-I and platelet factor 4 are biomarkers for infliximab response in rheumatoid arthritis. *Ann Rheum Dis* 2009;68:1328–33.
- [9] Baillet A, Trocmé C, Berthier S, Arlotto M, Grange L, Chenau J, et al. Synovial fluid proteomic fingerprint: S100A8, S100A9 and S100A12 proteins discriminate rheumatoid arthritis from other inflammatory joint diseases. *Rheumatol Oxf Engl* 2010;49:671–82.
- [10] Obry A, Lequerré T, Hardouin J, Boyer O, Fardellone P, Philippe P, et al. Identification of S100A9 as biomarker of responsiveness to the methotrexate/etanercept combination in rheumatoid arthritis using a proteomic approach. *PloS One* 2014;9:e115800.
- [11] Blaschke S, Rinke K, Maring M, Flad T, Patschan S, Jahn O, et al. Haptoglobin- α 1, - α 2, vitamin D-binding protein and apolipoprotein C-III as predictors of etanercept drug response in rheumatoid arthritis. *Arthritis Res Ther* 2015;17:45.
- [12] Fabre S, Dupuy AM, Dossat N, Guisset C, Cohen JD, Cristol JP, et al. Protein biochip array technology for cytokine profiling predicts etanercept responsiveness in rheumatoid arthritis. *Clin Exp Immunol* 2008;153:188–95.
- [13] McCarthy C, Orr C, Fee LT, Carroll TP, Dunlea DM, Hunt DJL, et al. Brief Report: Genetic Variation of the α 1-Antitrypsin Gene Is Associated With Increased Autoantibody Production in Rheumatoid Arthritis. *Arthritis Rheumatol Hoboken NJ* 2017;69:1576–9.
- [14] Ni M, Wei W, Feng Q, Sun XG, Wang YC, Gu YJ, et al. Transthyretin as a potential serological marker for the diagnosis of patients with early rheumatoid arthritis. *Clin Exp Rheumatol* 2013;31:394–9.
- [15] Arnett FC, Edworthy SM, Bloch DA, McShane DJ, Fries JF, Cooper NS, et al. The American Rheumatism Association 1987 revised criteria for the classification of rheumatoid arthritis. *Arthritis Rheum* 1988;31:315–24.
- [16] van der Heijde DM, van't Hof MA, van Riel PL, van Leeuwen MA, van Rijswijk MH, van de Putte LB. Validity of single variables and composite indices for measuring disease activity in rheumatoid arthritis. *Ann Rheum Dis* 1992;51:177–81.
- [17] Fransen J, van Riel PL. The Disease Activity Score and the EULAR response criteria. *Clin Exp Rheumatol* 2005;23:S93–99.
- [18] van Gestel AM, Prevoo ML, van 't Hof MA, van Rijswijk MH, van de Putte LB, van Riel PL. Development and validation of the European League Against Rheumatism response criteria for rheumatoid arthritis. Comparison with the preliminary American College of Rheumatology and the World Health Organization/International League Against Rheumatism Criteria. *Arthritis Rheum* 1996;39:34–40.
- [19] Simel DL, Samsa GP, Matchar DB. Likelihood ratios with confidence: sample size estimation for diagnostic test studies. *J Clin Epidemiol* 1991;44:763–70.
- [20] Harrell FE, Lee KL, Mark DB. Multivariable prognostic models: issues in developing models, evaluating assumptions and adequacy, and measuring and reducing errors. *Stat Med* 1996;15:361–87.

- [21] Ferreiro-Iglesias A, Montes A, Perez-Pampin E, Cañete JD, Raya E, Magro-Checa C, et al. Replication of PTPRC as genetic biomarker of response to TNF inhibitors in patients with rheumatoid arthritis. *Pharmacogenomics J* 2016;16:137–40.
- [22] Duroux-Richard I, Pers Y-M, Fabre S, Ammari M, Baeten D, Cartron G, et al. Circulating miRNA-125b is a potential biomarker predicting response to rituximab in rheumatoid arthritis. *Mediators Inflamm* 2014;2014:342524.
- [23] Takeuchi T, Miyasaka N, Tatsuki Y, Yano T, Yoshinari T, Abe T, et al. Baseline tumour necrosis factor alpha levels predict the necessity for dose escalation of infliximab therapy in patients with rheumatoid arthritis. *Ann Rheum Dis* 2011;70:1208–15.
- [24] Cuppen BVJ, Welsing PMJ, Sprengers JJ, Bijlsma JWJ, Marijnissen ACA, van Laar JM, et al. Personalized biological treatment for rheumatoid arthritis: a systematic review with a focus on clinical applicability. *Rheumatol Oxf Engl* 2016;55:826–39.
- [25] Pachot A, Arnaud B, Marrote H, Cazalis M-A, Diasparra J, Gouraud A, et al. Increased tumor necrosis factor-alpha mRNA expression in whole blood from patients with rheumatoid arthritis: reduction after infliximab treatment does not predict response. *J Rheumatol* 2007;34:2158–61.
- [26] Obry A, Hardouin J, Lequerré T, Jarnier F, Boyer O, Fardellone P, et al. Identification of 7 Proteins in Sera of RA Patients with Potential to Predict ETA/MTX Treatment Response. *Theranostics* 2015;5:1214–24.
- [27] Ma X, Xu S. TNF inhibitor therapy for rheumatoid arthritis. *Biomed Rep* 2013;1:177–84.
- [28] Combe B, Landewe R, Daien CI, Hua C, Aletaha D, Álvaro-Gracia JM, et al. 2016 update of the EULAR recommendations for the management of early arthritis. *Ann Rheum Dis* 2017;76:948–59.
- [29] Smolen JS, Landewé R, Breedveld FC, Buch M, Burmester G, Dougados M, et al. EULAR recommendations for the management of rheumatoid arthritis with synthetic and biological disease-modifying antirheumatic drugs: 2013 update. *Ann Rheum Dis* 2013;annrheumdis-2013-204573. doi:10.1136/annrheumdis-2013-204573.
- [30] Mierau M, Schoels M, Gonda G, Fuchs J, Aletaha D, Smolen JS. Assessing remission in clinical practice. *Rheumatol Oxf Engl* 2007;46:975–9.
- [31] Schaffner A, Rhyn P, Schoedon G, Schaer DJ. Regulated expression of platelet factor 4 in human monocytes--role of PARs as a quantitatively important monocyte activation pathway. *J Leukoc Biol* 2005;78:202–9. [32] Yeo L, Adlard N, Biehl M, Juarez M, Smallie T, Snow M, et al. Expression of chemokines CXCL4 and CXCL7 by synovial macrophages defines an early stage of rheumatoid arthritis. *Ann Rheum Dis* 2016;75:763–71.
- [33] Kasper B, Petersen F. Molecular pathways of platelet factor 4/CXCL4 signaling. *Eur J Cell Biol* 2011;90:521–6.
- [34] Endresen GK. Evidence for activation of platelets in the synovial fluid from patients with rheumatoid arthritis. *Rheumatol Int* 1989;9:19–24.
- [35] Yamamoto T, Chikugo T, Tanaka Y. Elevated plasma levels of beta-thromboglobulin and platelet factor 4 in patients with rheumatic disorders and cutaneous vasculitis. *Clin Rheumatol* 2002;21:501–4.
- [36] Donato R, Cannon BR, Sorci G, Riuzzi F, Hsu K, Weber DJ, et al. Functions of S100 proteins. *Curr Mol Med* 2013;13:24–57.
- [37] Yang Z, Yan WX, Cai H, Tedla N, Armishaw C, Di Girolamo N, et al. S100A12 provokes mast cell activation: a potential amplification pathway in asthma and innate immunity. *J Allergy Clin Immunol* 2007;119:106–14.
- [38] Yang Z, Tao T, Raftery MJ, Youssef P, Di Girolamo N, Geczy CL. Proinflammatory properties of the human S100 protein S100A12. *J Leukoc Biol* 2001;69:986–94.
- [39] Ye F, Foell D, Hirono K, Vogl T, Rui C, Yu X, et al. Neutrophil-derived S100A12 is profoundly upregulated in the early stage of acute Kawasaki disease. *Am J Cardiol* 2004;94:840–4.
- [40] Nordal HH, Brun JG, Halse A-K, Jonsson R, Fagerhol MK, Hammer HB. The neutrophil protein S100A12 is associated with a comprehensive ultrasonographic synovitis score in a longitudinal study of patients with rheumatoid arthritis treated with adalimumab. *BMC Musculoskelet Disord* 2014;15:335.
- [41] Nordal HH, Brun JG, Hordvik M, Eidsheim M, Jonsson R, Halse A-K. Calprotectin (S100A8/A9) and S100A12 are associated with measures of disease activity in a longitudinal study of patients with rheumatoid arthritis treated with infliximab. *Scand J Rheumatol* 2016;45:274–81.
- [42] Meugnier E, Coury F, Tebib J, Ferraro-Peyret C, Rome S, Bienvenu J, et al. Gene expression profiling in peripheral blood cells of patients with rheumatoid arthritis in response to anti-TNF-alpha treatments. *Physiol Genomics* 2011;43:365–71.
- [43] Sharma S, Ghosh S, Singh LK, Sarkar A, Malhotra R, Garg OP, et al. Identification of autoantibodies against transthyretin for the screening and diagnosis of rheumatoid arthritis. *PloS One* 2014;9:e93905.

Figures legends

Figure 1 : A, B and C. Biomarkers' baseline concentrations in patients achieving good EULAR response (R) or not (NR) at 6 months upon TNFi treatment. The Mann–Whitney non-parametric test was used to evaluate the significance of differences of biomarkers. **D.** Overlay of the ROC curves of the predictive multivariate combined model and the univariate model (prealbumin, PF4 and S100A12).

Figure 2. ROC curves corresponding to the application of the predictive combined model to specific biologic etanercept (ETN), adalimumab (ADA) and infliximab (IFX).

Figure S1. A. Biomarkers' baseline concentrations in patients achieving good EULAR response (R) or not (NR) at 6 months upon TNFi treatment. The Mann–Whitney non-parametric test was used to evaluate the significance of differences of biomarkers. **B.** ROC curves analysis of the biomarkers independently.

Baseline variable	All (n=53)	Responders (n=23)	Non-responders (n=30)	<i>p-value</i>
Age, median (IQR) years	54 (46;60)	55 (44;63)	54 (47.2;57.8)	0.95
Female, %	75	74	77	0.86
Disease duration, median (IQR) years	6 (3;12)	4.5 (2;11.5)	6.5 (3.8;11.5)	0.25
BMI, median (IQR) kg/m ²	23.9 (22.3;25.9)	23.7 (22.4;25.7)	23.9 (22;25.9)	0.95
DAS28 ESR baseline, median (IQR) units	5.1 (4.3;5.8)	5 (4.2;5.5)	5.5 (4.7;6.4)	0.074
Morning stiffness, median (IQR) min	60 (30;120)	60 (45;120)	52.5 (22.5;120)	0.27
HAQ, median (IQR) units	1.1 (0.8;1.6)	1.2 (0.8;1.4)	1.1 (0.9;2)	0.44
RF, median (IQR) IU/ml	118 (49;383)	103 (46;146)	128 (64;500)	0.38
ESR, median (IQR) mm/hour	24 (13;34)	24 (12;34)	24 (14.2;36)	0.55
CRP, median (IQR) mg/l	14.5 (6.8;27.2)	11.5 (7;28.5)	15.5 (6.2;21)	0.88

Table 1. Baseline demographics and clinical assessments of the studied population.

IQR: Interquartile Range, BMI: Body Mass Index, DAS28: Disease Activity Score 28, HAQ: Health Assessment Questionnaire, RF: Rheumatoid Factor, ESR: Erythrocyte Sedimentation Rate, CRP: C-reactive protein.

Table 2. Univariate logistic regression analysis on biomarker's quantitative values and qualitative (dichotomized considering the median value as cut-off) values.

Univariate logistic regression	Quantitative analysis	Qualitative analysis	
	<i>p</i> -value	Median (cut-off)	<i>p</i> -value
S100A12	0.22	152.9	0.072
Prealbumin	0.045	254	0.18
C-Reactive protein	0.93	11	0.21
PF4	0.065	1687.97	0.34
Haptoglobin	0.63	1.6	0.43
S100A8/A9	0.49	370.3	0.48
Alpha 1 antitrypsin	0.57	1.57	0.48
Apolipoprotein A1	0.29	1.56	0.82

Table 3. Evaluation of the predictive value of the TNFi multivariate model combining prealbumin, PF4 and S100A12 on the ETN, IFX or ADA population individually.

	IFX	ETN	ADA
ROC-AUC	0.75	0.77	0.78
Specificity, % [95% CI]	67 [22 – 96]	88 [47 – 100]	75 [48 – 93]
Sensitivity, % [95% CI]	83 [32 – 100]	67 [22 – 96]	82 [48 – 98]
PPV, % [95% CI]	71 [29 – 96]	80 [28 – 99]	69 [39 – 91]
NPV, % [95% CI]	80 [28 – 99]	78 [40 – 97]	86 [57 – 98]

AUC: Area Under the Curve from the ROC analysis; CI: Confidence Interval.

Figure 1

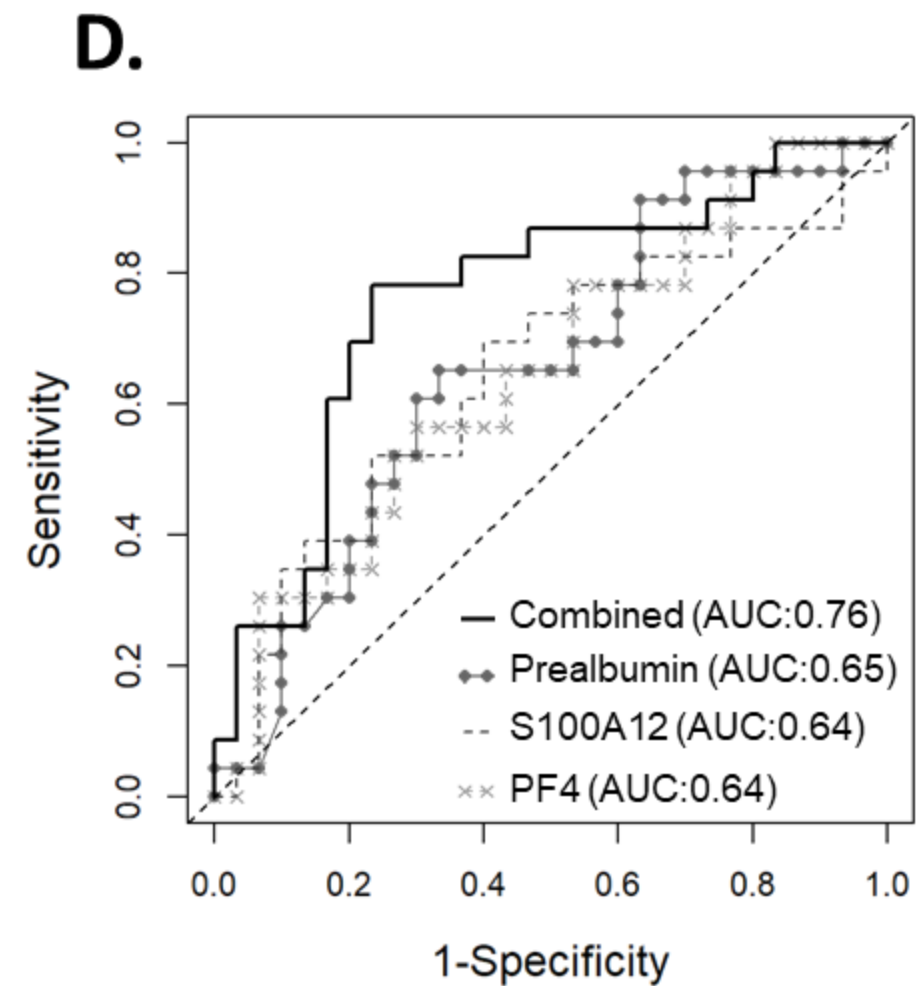
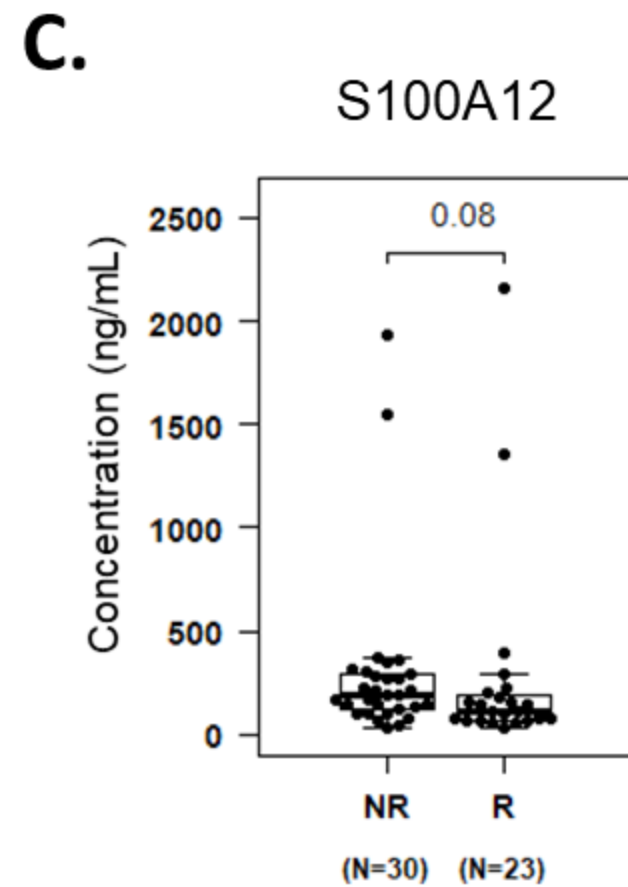
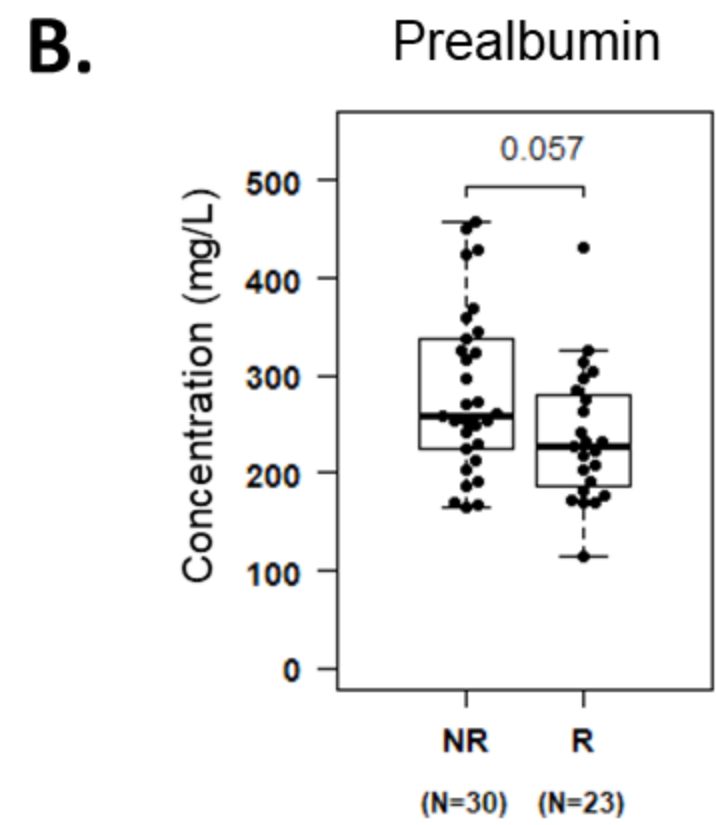
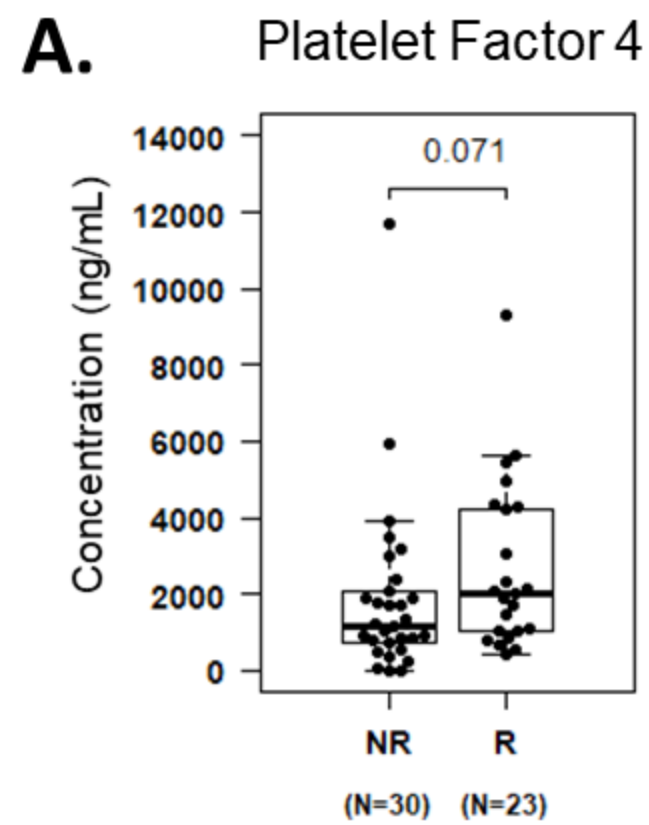


Figure 2.

