



HAL
open science

The light behavior from Shallow Trench Isolation profiles at Chemical Mechanical Planarization step and correlation with optical endpoint system by interferometry

Sophia Bourzgui, Gaelle Georges, Agnès Roussy, Jakey Blue, Emilie Faivre,
Jacques Pinaton

► To cite this version:

Sophia Bourzgui, Gaelle Georges, Agnès Roussy, Jakey Blue, Emilie Faivre, et al.. The light behavior from Shallow Trench Isolation profiles at Chemical Mechanical Planarization step and correlation with optical endpoint system by interferometry. Reflection, Scattering, and Diffraction from Surfaces VI, Aug 2018, San Diego, United States. pp.11, 10.1117/12.2320966 . hal-02415466

HAL Id: hal-02415466

<https://hal.science/hal-02415466v1>

Submitted on 9 Mar 2020

HAL is a multi-disciplinary open access archive for the deposit and dissemination of scientific research documents, whether they are published or not. The documents may come from teaching and research institutions in France or abroad, or from public or private research centers.

L'archive ouverte pluridisciplinaire **HAL**, est destinée au dépôt et à la diffusion de documents scientifiques de niveau recherche, publiés ou non, émanant des établissements d'enseignement et de recherche français ou étrangers, des laboratoires publics ou privés.

The light behavior from Shallow Trench Isolation profiles at Chemical Mechanical Planarization step and correlation with optical endpoint system by interferometry

S. Bourzgui^{a,b,c}, G. Georges^a, A. Roussy^b, J. Blue^b, E. Faivre^c, J. Pinaton^c

^aAix Marseille Univ, CNRS, Centrale Marseille, Institut Fresnel, Marseille, France;

^bMines Saint-Etienne and LIMOS, UMR CNRS 6158, CMP Georges Charpak, F-13541 Gardanne, France;

^cSTMicronics, Rousset, France

ABSTRACT

In the semiconductor manufacturing, the control of Chemical-Mechanical Planarization (CMP) process time for Shallow Trench Isolation (STI) is important. A wafer under- or over-polishing causes leakage and short-circuits making the chips defective. The CMP process control by interferometry is one of the most used systems to monitor the polishing time. In some cases, the interferometry process control is not possible because the wafer patterns cause some unwanted effects such as scattering, diffraction, and absorption. Consequently the signal is affected. In this paper, we apply a theoretical and experimental approach on the light reflected from different STI stacks in order to interpret the observed optical phenomenon. The experimental study is done to get close to the light measurement conditions within the manufacturing environment. With this experiment, we evidence that the trench pattern inside memory zones is responsible for the diffraction effect on the signal. In a production environment, this pattern results in a lower measured intensity when the size of memory area increases. Besides, numerical calculations are performed based on differential method in order to predict the diffracted intensity, which depends on the chip design parameters and the incident wavelengths tuning. By using STI models, this method helps to determine the wavelengths with the highest reflected intensity.

Keywords: optical endpoint detection, interferometry, CMP, STI stack profile, wafer pattern, diffraction, scattering, wavelength.

1. INTRODUCTION

1.1 STI CMP process control

STI CMP process is essential to create the right Step Height (SH) of silicon dioxide (SiO_2) to separate electrically the transistors implemented later in the fabrication process (Fig.1). Thus in order to remove the right amount of SiO_2 thickness, the process requires a reliable system to control the material removal at nanometer accuracy. One of the most relevant process control widely used for CMP is the optical endpoint detection, with a monochromatic laser source¹⁻³ or, for advanced nodes a white-light source⁴.

In this paper, the focus is made on the endpoint detection by interferometry for STI CMP process. Light interferences enable to correlate the SiO_2 thickness with the intensity detected during polishing time. Thus the sinusoid signal obtained is used to stop at the SiO_2 thickness target wanted. To achieve it, a detection algorithm is created. It is composed of two key elements: filters to smooth the raw signal and detection windows to detect sinusoid slopes. Nevertheless, the signal must be sufficiently intense and with a correct amplitude to achieve process control by the optical system. The interferometric signal ideally presents a perfect sinusoid. In a context of polishing, it is noisy by the wafer patterns and the movements of the polishing process, such as the platen rotation, the head rotation and head sweep. In some cases, this signal does not have the necessary conditions for the correct detection and this paper is aimed at this category of products.

Previous researches and experimental results⁵ illustrate that the interferometric signal shape strongly depends of the product patterns. Under some parameters combinations, the signal might present weak amplitude and a bad signal to

noise ratio. Such of signals can prevent from creation of a robust detection algorithm and thus the use of the endpoint detection by interferometry.

The objective here is to study the light reflected upon STI profiles and to investigate the associated optical effects such as scattering and diffraction. With the understanding of these effects, it is possible to highlight the incident light behaviors according to the product parameters. Thus, the goal is to make some analogy between the results and the poor detection in production. In addition, in order to find a configuration for better signal detection, calculations are made on the visible band and near infrared. This part of the research allows us to see the evolution of light intensity as a function of product parameters and ranges of wavelength. So, the goal is to give a range of wavelengths which are better suited to a given SiO₂ thickness and trench depth combination.

1.2 Context

The STI CMP is composed of three polishing steps, performed by three different platens, each of them having a specific objective: the platen 1 is responsible for polishing the most of the SiO₂ layer and leaving 100nm of SiO₂ thickness above the Si₃N₄. The platen 2 removes the SiO₂ remaining above the Si₃N₄. Finally the platen 3 slightly polishes the Si₃N₄ to overcome any residual oxide problem on the active areas (Fig. 1.a). As part of this study, the process control by interferometry is used to polish SiO₂ on the platen 1. The method is based on the optical interference of the laser beam reflections from the interface of a semi-transparent material layer. The optical system is positioned under the polishing platen and the red laser beam crosses a transparent window (Fig. 2).

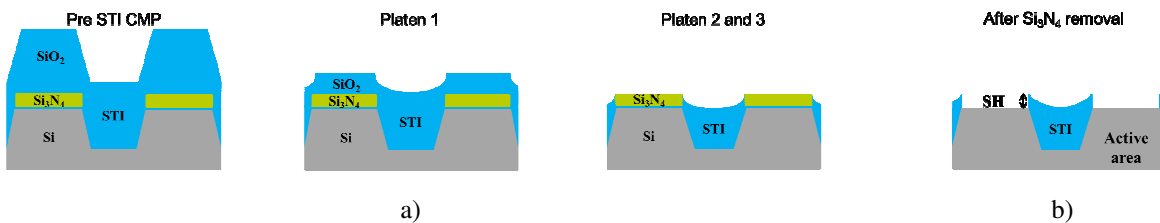


Fig. 1: Schematic representations of cross-sectional views of the materials stack at the CMP STI step for a) and the stack after the Si₃N₄ removal and the SH between the Si and the SiO₂ STI for b).

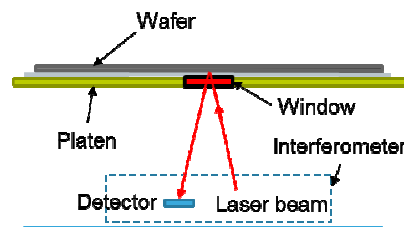


Fig. 2: Side view of the optical system assembly with the polishing platen

1.3 Purpose

In this previous experimental research⁵, a Design Of Experiment (DOE) has studied the impact on signal shape of three key product features at the STI manufacturing step: memory size, SiO₂ thickness before STI CMP and trench depth (see Fig. 3). It demonstrates two significant observations about the influence of product parameters on signal shape:

- At the scale of the chip, the bigger the memory zone is, the larger the noise and the smaller the amplitude are. The important feature of memory design is that a periodic grid of SiO₂ trenches structures it.
- For a given memory size, the trench depth is the main influent parameter on amplitude of sinusoid signal.

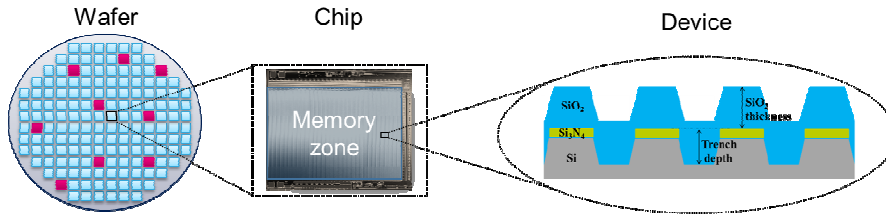


Fig. 1: The diagram shows that microchips are made up of several types of pattern like memory zones which have a periodic structure of trenches with high density, compared to logic zone.

As it shows in the Fig. 4, the largest memory sizes have a signal with weak amplitude, and prevent from the creation of detection algorithm. Nonetheless, the previous study shows that the signal can be improved by varying two key parameters: deposited SiO₂ thickness and the trench depth, in a hundred-nanometer scale. However, this result does not give information about the optical phenomenon associated with the light reflected upon different STI stack profiles and, at which wavelength it could have higher signal intensity.

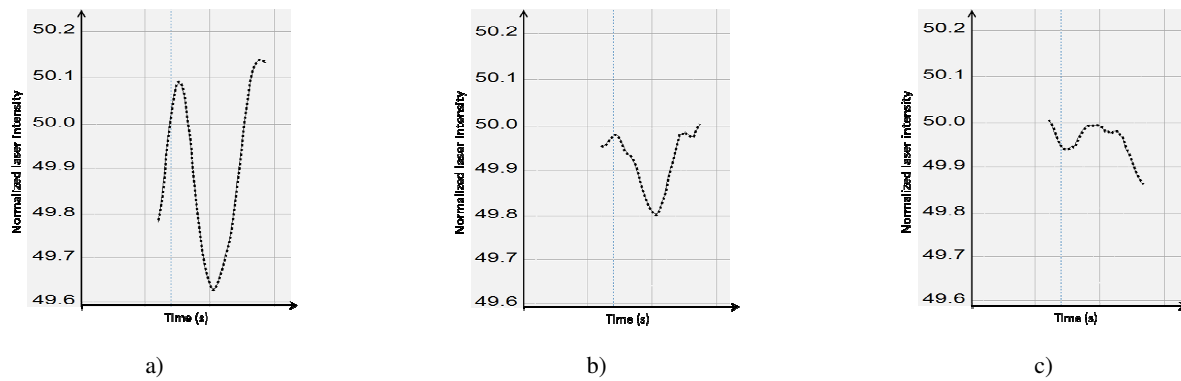


Fig. 2: The graphs show filtered memory products' signals. Each curve represents the signal intensity during the polishing process of platen 1. The a) has the smallest memory size, b) an intermediate size and c) the largest memory size. For a), the signal is correct for developing the detection algorithm in contrast to b) and c) which have poor endpoint detection.

So this paper presents theoretical and experimental approaches to respond to these interrogations. In a first part, the experimental study is presented, set up with the light measurement conditions close to the manufacturing environment. To complete, numerical calculations based on differential method are performed to predict the diffracted intensity as a function of the chip design parameters and of the incident wavelengths. Used on STI models, this method helps to determine the wavelengths with the highest reflected intensity. The conclusions to this research will give directions of future works, about the necessity of topology characterization and the possibility to adapt the STI topology.

2. EXPERIMENTAL STUDY

2.1 Angular Resolved Scatterometer

To analyze the laser source behavior reflected at the wafer surface, the experimental study is carried out using an Angular Resolved Scatterometer developed at the Fresnel Institute⁶⁻¹⁰. The light source used for this experiment is a laser He-Ne at 632.8 nm. The incidence angle is 45°. To have the same wafer illumination surface conditions, the beam shape is widened with the use of a beam expander, and then the source passes through the same window used for the polishing process. Figure 5 shows a scheme of the measurement device.

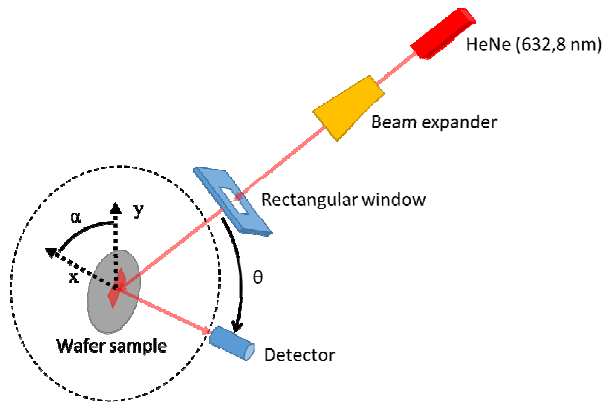


Fig. 3: Angular Resolved Scatterometer scheme

2.2 Samples

Wafer samples measured are composed of three different memory sizes. Reflecting spectra is collected as a function of the angle, from (-10°) to 60° .

Table 1: Samples and characteristics associated

Sample n°	1	2	3
Optical process control	YES	NO	NO
Memory size (kbits)	32	512	2048
% of memory coverage/chip	10	53	70

As said previously, the objective of this experiment is to determine the optical phenomena associated with monochromatic laser on the wafer surface. The method used to determine scattering or diffraction is based on the results obtained by the light intensity over the angle.

2.3 Results of light diffraction from a laser source ($\lambda = 632.8\text{nm}$)

The Fig. 6 a) highlights the intensity measurement in function of the scattering angle for three memory sizes, with an identical trench depth. Apart from the diffraction orders, the scattered light is close to zero. This result shows that the light scattering by the STI profiles is negligible. Thus the surface roughness should have a little impact on the reflected light loss in production.

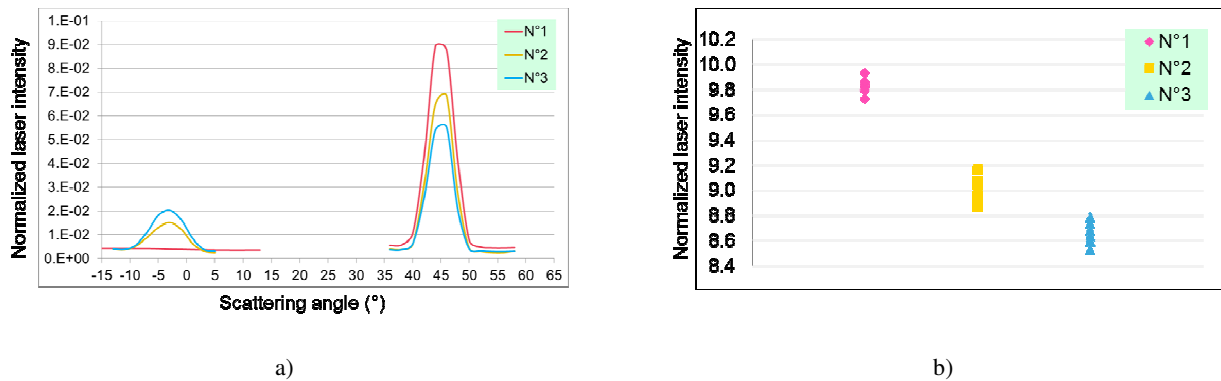


Fig. 4: Chart a) shows the normalized intensity detected as a function of scattering angle. The first order corresponds to the beam diffraction caused by the periodicity of the sample patterns. Graph b) shows the result of the laser intensity average per wafer during polishing process from the same three types of samples.

To add, the measured intensities of samples 2 and 3 present diffraction at the first order. Using the grating equation (1), the experimental result of the distance between successive grooves responsible of the first diffracted order is calculated¹¹.

$$a = \frac{m * \lambda}{n_{air} * (\sin i + \sin r)} \quad (1)$$

- n_{air} : air refractive index (1)
- m : diffraction order (-1)
- λ : laser wavelength (632.8 nm)
- i : incidence angle (-45°)
- r : refractive angle (-3°)

The experimental result of the groove spacing is expressed as a value normalized by a reference surface S. The experimental result $a/S = 33.32 \text{ nm}^{-1}$ is closed to the theoretical size of a trench period in the memory area: $a/S = 33.60 \text{ nm}^{-1}$. The path period calculation highlights that the pattern responsible for the diffraction is the dimension of a trench period in memory zone. This experiment shows that the light behavior is different according to the percentage of memory zone and logical zone in the chip. With a memory that covers 10% of the chip, it is the light and logic zone interaction that predominates. In contrast to memories covering a larger chip area, it is the interaction between light and memory zone that predominates. Moreover, the diffraction reduced the intensity of the signal reflection. Measures of average intensities in production shows that the interferometric signal decreases as the memory size increases (see Fig. 6 b).

To complete these experimental measures, the second part presents which conditions would be more favorable to increase the reflected intensity by numerical calculations and by making the focus on periodical structures in memory zone.

3. THEORITICAL STUDY

3.1 Description

The simulation code, initially developed in the Fresnel Institute⁹, calculates the intensity diffracted by any two-dimensional profile using the differential methods. This code makes it possible to simulate the interaction of an incident wave with periodic or random structures, and, therefore, in this case to take into account the variation of different parameters of the microstructures (the trench depth and the deposit SiO₂ thickness). Thus, the calculations are made in the range of visible and near-infrared range with a step of 10nm.

To perform the simulation, it is first necessary to create a model of the STI stack. In order to be the most precise in the shapes of material each layer, wafers cross sections before and after polishing were done. The Scanning Electron Microscopy (SEM) images made from its sections allowed reproducing a model that is as close as possible to reality in terms of thickness and shape of the different layers. On the other hand, the refractive indices n and k for each material must be defined to calculate the diffracted intensity. The n and k calculation is performed with the Cauchy-Urbach formula¹²⁻¹³:

$$n(\lambda) = A_n + \frac{B_n}{\lambda^2} + \frac{C_n}{\lambda^4} \quad (2)$$

$$k(\lambda) = A_k * e^{b(1.24\mu m(\frac{1}{\lambda} - Eg))}$$

- λ : wavelength,

- A_n , B_n and C_n : index parameters,
- A_k : extinction coefficient amplitude,
- b : the exponent factor,
- E_g : the band edge

The coefficients are measured on a Semilab ellipsometer¹⁴, on a wafer with STI stacking before polishing with a fit quality of $R^2 = 0.99$.

Table 2: Coefficient values for n and k calculation

		n	k
Si ₃ N ₄	A_n	2.00E+00	1.45E+00
	B_n (μm^2)	1.25E-02	4.20E-03
	C_n (μm^4)	7.00E-05	1.40E-07
SiO ₂	A_k	6.53E-02	4.47E-02
	b (1/eV)	6.19E+00	1.12E+00
	E_g (eV)	8.21E+00	6.43E+00

Besides, the substrate considered is a silicon substrate and the superstrate is air. The model size is ten micrometers and the calculation is done in two dimensions. Nine models are built, with different trench depths and SiO₂ thicknesses:

Table 3: STI models

Model	SiO ₂ thickness (nm)	Trench depth (nm)
1	650	535
2	650	575
3	650	615
4	720	535
5	720	575
6	720	615
7	800	535
8	800	575
9	800	615

The purpose of these calculations is therefore to study the behavior of the reflected light in the periodic trench structures and to extract the wavelengths with the highest order 0 intensity.

3.2 Results from the calculations

Numerical calculations give the result of the efficiency as a function of the scattering angle. From these results, the light reflected at the order 0 is extracted. This light reflected at the order 0 is expressed as a function of the wavelength to thus study the wavelengths with the maximum reflected intensity. Each curve in Fig. 7 corresponds to a STI model and the nine models are divided into three graphs. In the same graph, the deposited SiO₂ thickness is identical.

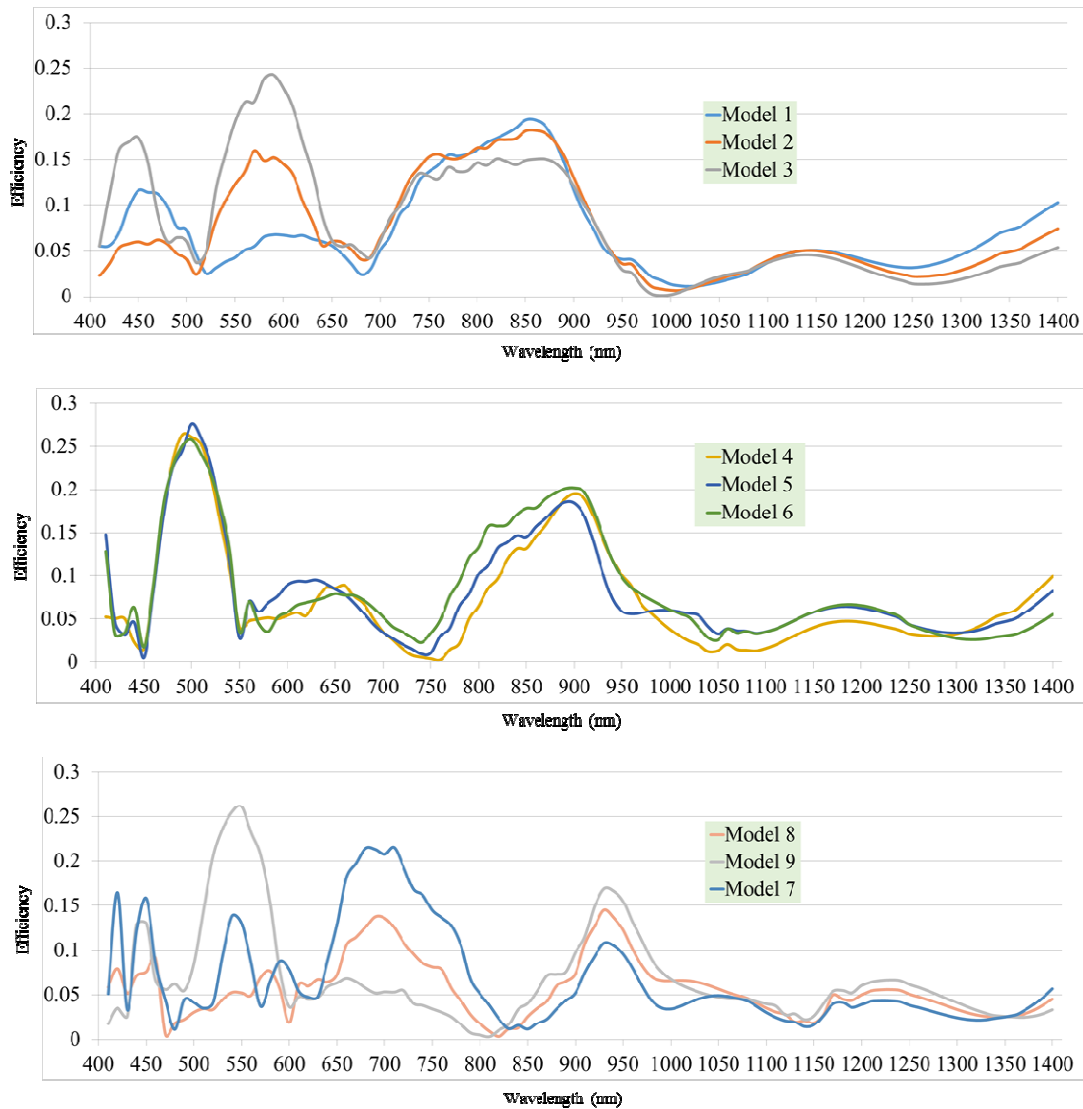


Fig. 5: Graphical result of the reflected intensity in function of the visible and near infra-red wavelengths.

First, all models have a reflected intensity, for wavelengths above 990nm, lower compared to the rest of the light spectrum. This wavelength range is obviously not optimal for maximizing the intensity of the reflected signal. For endpoint detection, the wavelength used is in the range of red. The calculation results of the intensity as a function of the wavelength show that the red range is not the optimal zone in terms of intensity reflected at the order 0 with an efficiency around 0.05. This result is valid for all models except the 7 model, with an efficiency around 0.2 (four times greater). However, during polishing, the thickness of SiO₂ decreases. It is therefore essential that the reflected intensity is also optimized at the lower SiO₂ deposits. Models 4 and 1 are models equivalent to Model 7 with the same trench depth and a lower deposit, but a low efficiency value. We must therefore find a compromise between a high efficiency and a deposit thick enough to have a good planarization. Indeed, the trench period is a parameter that cannot be modified because it would change the properties of the device. However, the SiO₂ deposit can be modified, while respecting a ratio of SiO₂ thickness on trench depth acceptable for polishing. Models 7 to 9 with the thickest deposit (800nm) do not show peak efficiency at the same wavelengths as the other models with lower SiO₂ deposition. Taking as SiO₂ thickness before CMP at 720nm, we are therefore looking for models 1 to 6 with efficiency peaks at the same wavelengths. For optimizing the intensity of the measured signal for models 1 to 6, the reflected intensity around the 870nm wavelength is about three times as much as in the red range. In conclusion, for product with large zones of periodic structures, to

maximize the signal intensity and improve the signal-to-noise ratio for endpoint detection, the recommended wavelength in these calculations is around 870nm, for a SiO₂ thickness before CMP at 720nm.

4. CONCLUSION

The purpose of this study is to complete the results of previous experiments, which shows that the size of the memories has an impact on the interferometric signal used as a process control for STI CMP. On one hand, the goal of this work is to analyze the origin of the light loss for the products with large memory. On the other hand, to propose an experimental set up that maximizes the signal, and improves the signal-to-noise ratio for endpoint detection. Thus, with the experiment, it has been possible to demonstrate that the periodicity of SiO₂ trenches in memory zone diffracts the incident light, when these areas reach a certain percentage of the entire chip. The diffraction might be the cause of the intensity loss of the reflected beam at order 0 and the deterioration of the signal-to-noise ratio. In addition, numerical calculation of the intensity reflected on STI profiles of a memory zone has shown that in other wavelength range, especially around 870nm, the reflected signal is 3 times more intense. However, calculations are limited to small structures and do not take into account logic zone inside the chip. Thus, it would be interesting to go further in this study by measuring the same type of products with the selected wavelengths.

REFERENCES

- [1] Dale L. Hetherington, David J. Stein, "In-line monitoring of chemical-mechanical polishing processes", Proc. SPIE 3884, In-Line Methods and Monitors for Process and Yield Improvement, (27 August 1999)
- [2] S. J. Fang et al., "Control of dielectric chemical mechanical polishing (CMP) using an interferometry based endpoint sensor," Proceedings of the IEEE 1998 International Interconnect Technology Conference (Cat. No.98EX102), San Francisco, CA, 1998, pp. 76-78.
- [3] D. A. Chan, B. Swedek, A. Wiswesser and M. Birang, "Process control and monitoring with laser interferometry based endpoint detection in chemical mechanical planarization," IEEE/SEMI 1998 IEEE/SEMI Advanced Semiconductor Manufacturing Conference and Workshop (Cat. No.98CH36168), Boston, MA, 1998, pp. 377-384.
- [4] C. Perrot et al., "STI CMP stop in Silicon Nitride controlled by FullVision?? endpoint," ICPT 2012 - International Conference on Planarization/CMP Technology, Grenoble, France, 2012, pp. 1-5.
- [5] S. Bourzgui, A. Roussy, G. Georges, E. Faivre, K. Labory and A. Allard, "Device pattern impact on optical endpoint detection by interferometry for STI CMP," ICPT 2017; International Conference on Planarization/CMP Technology, Leuven, Belgium, 2017, pp. 1-6
- [6] Amra C., Grezes-Besset C., Roche P., and Pelletier E., "Description of a scattering apparatus: application to the problems of characterization of opaque surfaces," Appl. Opt. 28, 2723-2730 (1989)
- [7] Amra C., "First-order vector theory of bulk scattering in optical multilayer," Appl. Opt. 32, 5492-5503 (1993)
- [8] Amra C., "Light-scattering From Multilayer Optics .1. Tools of Investigation, " Journal of the Optical Society of America A-optics Image Science and Vision 11, 197-210 (1994).
- [9] Arnaud L., "Diffraction et diffusion de la lumière : modélisation tridimensionnelle et application à la métrologie de la microélectronique et aux techniques d'imagerie sélective en milieu diffusant," PhD thesis, Université Paul Cézanne Aix-Marseille III, (2008)
- [10] Amra, C., Torricini, D., and Roche, P., "Multiwavelength (0.45-10.6) angle-resolved scatterometer or how to extend the optical window," Appl. Opt. 32, 5462- 5474 (1993)
- [11] Palmer, Christopher A., and Erwin G. Loewen. Diffraction grating handbook. New York: Newport Corporation, (2005).
- [12] Pavunny, Shojan P., Reji Thomas, and Ram S. Katiyar. "Cauchy-Urbach Dielectric Function Modeling of Amorphous High-k LaGdO₃ Films." ECS Transactions 45.6 (2012): 219-223.
- [13] Pascu, Rovenia, and Maria Dinescu. "Spectroscopic ellipsometry." Romanian Reports in Physics 64.1 (2012): 135-142.
- [14] Bourzgui, Sophia, et al. "Optimisation d'un modèle statistique d'empilement de matériaux diélectriques pour la mesure indirecte par réflectométrie spectroscopique des étapes avant et après polissage des caissons d'isolation." Journées Nationales du Réseau Doctoral en Micro-nanoélectronique (JNRDM). 2016.