



HAL
open science

Estimation of antecedent wetness conditions for flood modelling in northern Morocco

Yves Tramblay, R. Bouaicha, L. Brocca, W. Dorigo, Christophe Bouvier, S. Camici, Éric Servat

► **To cite this version:**

Yves Tramblay, R. Bouaicha, L. Brocca, W. Dorigo, Christophe Bouvier, et al.. Estimation of antecedent wetness conditions for flood modelling in northern Morocco. *Hydrology and Earth System Sciences*, 2012, *Hydrology and Earth System Sciences*, 16 (11), pp.4375-4386. 10.5194/hess-16-4375-2012 . hal-02414970

HAL Id: hal-02414970

<https://hal.science/hal-02414970>

Submitted on 24 Aug 2020

HAL is a multi-disciplinary open access archive for the deposit and dissemination of scientific research documents, whether they are published or not. The documents may come from teaching and research institutions in France or abroad, or from public or private research centers.

L'archive ouverte pluridisciplinaire **HAL**, est destinée au dépôt et à la diffusion de documents scientifiques de niveau recherche, publiés ou non, émanant des établissements d'enseignement et de recherche français ou étrangers, des laboratoires publics ou privés.



Distributed under a Creative Commons Attribution 4.0 International License



Estimation of antecedent wetness conditions for flood modelling in northern Morocco

Y. Tramblay¹, R. Bouaicha², L. Brocca³, W. Dorigo⁴, C. Bouvier¹, S. Camici³, and E. Servat¹

¹IRD – UMR5569, Hydrosociences-Montpellier, Montpellier, France

²Direction de la Recherche et de la Planification de l'Eau (DRPE), Rabat, Morocco

³Research Institute for Geo-Hydrological Protection, CNR, Perugia, Italy

⁴Institute of Photogrammetry and Remote Sensing, Vienna University of Technology, Vienna, Austria

Correspondence to: Y. Tramblay (ytramblay@gmail.com)

Received: 26 June 2012 – Published in Hydrol. Earth Syst. Sci. Discuss.: 10 August 2012

Revised: 11 October 2012 – Accepted: 6 November 2012 – Published: 23 November 2012

Abstract. In northern Morocco are located most of the dams and reservoirs of the country, while this region is affected by severe rainfall events causing floods. To improve the management of the water regulation structures, there is a need to develop rainfall–runoff models to both maximize the storage capacity and reduce the risks caused by floods. In this study, a model is developed to reproduce the flood events for a 655 km² catchment located upstream of the 6th largest dam in Morocco. Constrained by data availability, a standard event-based model combining a SCS-CN (Soil Conservation Service Curve Number) loss model and a Clark unit hydrograph was developed for hourly discharge simulation using 16 flood events that occurred between 1984 and 2008. The model was found satisfactory to reproduce the runoff and the temporal evolution of floods, even with limited rainfall data. Several antecedent wetness conditions estimators for the catchment were compared with the initial condition of the model. These estimators include an antecedent discharge index, an antecedent precipitation index and a continuous daily soil moisture accounting model (SMA), based on precipitation and evapotranspiration. The SMA model performed the best to estimate the initial conditions of the event-based hydrological model ($R^2 = 0.9$). Its daily output has been compared with ASCAT and AMSR-E remote sensing data products, which were both able to reproduce with accuracy the daily simulated soil moisture dynamics at the catchment scale. This same approach could be implemented in other catchments of this region for operational purposes. The results of this study suggest that remote sensing data are potentially useful to estimate the soil moisture conditions in the case of ungauged catchments in Northern Africa.

1 Introduction

Northern Morocco is the rainiest part of the country, with a Mediterranean type of climate influenced by the nearby Atlantic Ocean. This region hosts some of the largest dams and reservoirs in the country (Bouaicha and Benabdelfadel, 2010), which are mainly used for water supply and irrigation. Like other regions bordering the Mediterranean Sea, this region is also affected by violent floods, causing extended damage to the populations and infrastructures (Bouaicha and Benabdelfadel, 2010; Llasat et al., 2010). Estimates of flood volumes are needed to improve dam management in this region, focusing on maximizing the storage of the reservoirs to address regional water scarcity while avoiding dam overtopping and failure. With the recent development of hydrometric data transmission systems in Morocco, it will soon be possible to implement real-time flood modelling to increase dam safety. Therefore, there is a current need to improve the flood modelling approaches in Morocco.

Like in many developing countries, long records of rainfall and runoff data at short time steps are rarely available in North Africa (Hugues, 2011). Therefore, in the context of flood modelling, event-based models are representing a sound alternative to continuous ones. Easy-to-use and simple, event-based models are also often preferred to continuous models for real time operational applications in Southern Europe. However, their main limitation is that the initial soil moisture conditions need be set from external information (Berthet et al., 2009; Tramblay et al., 2010). Several studies have shown the strong influence of the antecedent soil moisture conditions on the response of a catchment to

a rainfall event in different regions such as Spain (Castillo et al., 2003; Rodríguez-Blanco et al., 2012), Southern France (Tramblay et al., 2010, 2011; Cousteau et al., 2012), Italy (Brocca et al., 2009a; Norbiato et al., 2008), Southwestern USA (Wagener et al., 2007), and China (Huang et al., 2007). An important research question, as stated by Wagener et al. (2007), is how sensitive the model predictions of runoff are to the specification of initial wetness conditions, and how complex an inter-storm model must be to meet this requirement.

In recent studies, relationships have been established between indicators of catchment's antecedent wetness conditions and the initial conditions of event-based models. In particular, the Soil Conservation Service Curve Number (SCS-CN) method (Mishra and Singh, 2003) is widely used for operational flood modelling in Mediterranean countries (Brocca et al., 2009a, 2011b; Tramblay et al., 2010). Moreover, this model is suitable to account for initial soil moisture conditions with its S parameter describing the initial soil potential maximum retention. Several authors have successfully correlated in-situ soil moisture measurements with the S parameter of the SCS-CN model for floods occurring in semi-arid environments (Huang et al., 2007; Brocca et al., 2009a; Tramblay et al., 2010). When no measurements of soil moisture are available, alternatively a continuous Soil Moisture Accounting (SMA) model can be used. This approach has been also used to set up the initial conditions of event-based models (Norbiato et al., 2008; Javelle et al., 2010; Cousteau et al., 2012).

In addition, soil moisture data retrieved from active and passive microwave sensors has become readily available at a temporal resolution of approximately one day (Brocca et al., 2011a). Nowadays, the most established products are those provided by the Advanced Microwave Scanning Radiometer for the Earth observing system (AMSR-E) on-board the Aqua satellite, which will be continued by the recently launched AMSR-2, the Advanced SCATerometer (ASCAT) on board the MetOp (Meteorological Operational) satellite, and the Soil Moisture and Ocean Salinity (SMOS) mission of the European Space Agency. The various remote sensing products have been successfully validated against ground soil moisture data in different Mediterranean catchments (Amri et al., 2012; Gruhier et al., 2008; Albergel et al., 2009; Brocca et al., 2011a; Parrens et al., 2012). In the recent years, a growing number of studies are considering the use of this type of data to improve flood modelling and forecasting, through the implementation of data assimilation techniques (Beck et al., 2009; Brocca et al., 2010a, 2012; Meier et al., 2011; Matgen et al., 2012).

In this study, the feasibility of setting up a rainfall-runoff model with limited rainfall data is tested in order to reproduce the flood events occurring upstream of a large dam in northern Morocco. A standard event-based model is developed and tested as if it were used in an operational context. All model parameters are set as a constant for all the flood

events, except for the initial condition of the model for which different indicators of antecedent wetness conditions are compared. These indicators include antecedent precipitation and discharge indexes, as well as a simplified continuous SMA model depending on precipitation and evapotranspiration data and a single parameter. Also, AMSR-E and ASCAT remote sensing data of soil moisture are evaluated for their ability to reproduce antecedent wetness conditions in the catchment. In Sect. 2 the study area and data are presented. The rainfall-runoff model is presented in Sect. 3, and the modelling results and the comparison with AMSR-E and ASCAT datasets in Sect. 4.

2 Study area and datasets

2.1 Mdouar catchment

The Mdouar catchment (655 km²) is located upstream of the Makhazine Dam (1800 km²), the 6th largest in the country, in northern Morocco (Fig. 1). The climate is Mediterranean, with a wet season with moderate temperatures from October to April and a hot dry season from May to September. It is also influenced by the Atlantic Ocean, 40 km downstream. The basin consists of plains in the western part, while in the east the terrain becomes more rugged and mountainous. The altitude increases progressively eastward until reaching 1600 m with the foothills of the Rif mountain range. This configuration is causing large precipitation amounts in the basin, reaching up to 1100 mm per year on average but with a strong inter-annual variability. The soil substrate consists of an alternation of marl and sandstone. The western and central parts are subject to severe erosion. The predominance of impermeable soils in the watershed is favoring runoff, which is increased by the effect of slope in the eastern part. There are neither cities nor urban centers in the catchment; vegetation is characterized by the presence of matorral, a typical Mediterranean land cover, with a predominance of cork oak forests. Most of the forest cover is located in the headwater's sub-catchments. In the lowest parts, on cultivated plains, agriculture is the dominant economic activity. The location of the basin provides a significant potential for water resources. The Makhazine Dam was built in 1979 for irrigation, water supply, energy production, as well as protection against flooding of the plain downstream. It is a 67 m high dam of mixed earth and rocks, creating a reservoir with a usable capacity of 724 Mm³. The mean annual inflow is 678 million m³ and the mean evaporation is 1176 mm yr⁻¹. The city of Ksar El Kebir (200 000 inhabitants) located immediately (8 km) downstream of the dam is a plain area highly vulnerable to flooding.

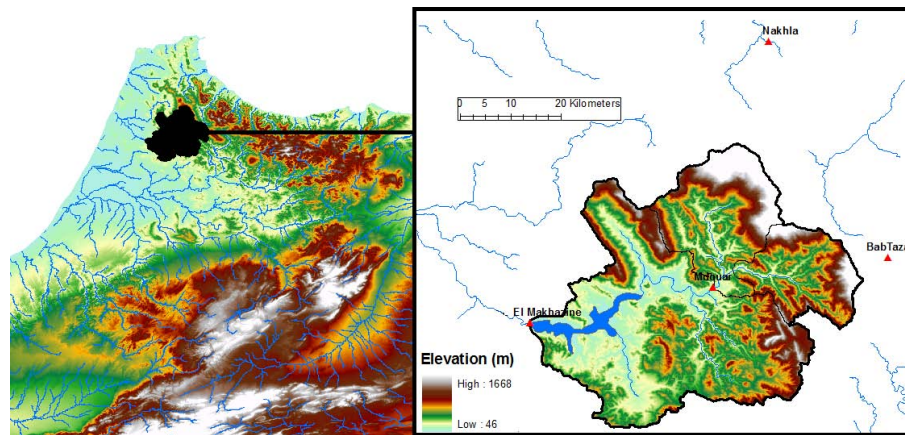


Fig. 1. Catchment and rain gauges stations.

2.2 Precipitation and discharge data

Daily precipitation data are available for stations Makhazine dam (60 m), Mdouar (90 m), Nakhla (210 m) and Bab Taza (900 m) between 1980 and 2011 (Fig. 1). For these stations, 5-min precipitation data are also available for a few episodes. The inventory of rainfall accumulations per episode is reported in Table 1. Total precipitation over the Mdouar catchment during the flood events was computed with the inverse distance method. There is a significant west–east gradient, with precipitation increasing from the Makhazine dam to the Bab Taza stations (Fig. 2). This gradient follows the gradual increase in altitude towards east. There is also a significant correlation in the cumulative rainfall per episode between the different stations, in particular between Mdouar and Bab Taza ($r = 0.96$). There is a fairly strong temporal coincidence of rainfall between the different stations: rainfall affects almost simultaneously the four stations, although stations Nakhla and Bab Taza are respectively 67 km and 60 km away from the station located at the dam. Therefore, rainfall events causing flooding in the basin have a large spatial extension. Such a configuration of rainfall fields supports the generation of potentially significant flooding by generating runoff simultaneously in the different tributaries. However, due to the low density of rain gauge stations for such a large area, it is difficult to analyze in detail the spatial distribution of rainfall intensities across the entire watershed.

Daily river discharge has been measured at Mdouar since 1969 and shows a strong seasonality, with most flow amount observed during winter. 75 % of annual maximum daily runoff occurs from December to February. No trends in extreme discharges are found between 1969 and 2008, similarly to what Trambly et al. (2012) observed for extreme precipitation in northern Morocco. There is a high variability of annual maximum daily values, between 69 and 1023 m³ s⁻¹, depending on the year. Hourly discharge data is available for 16 flood events between 1984 and 2008 (Table 1), of which

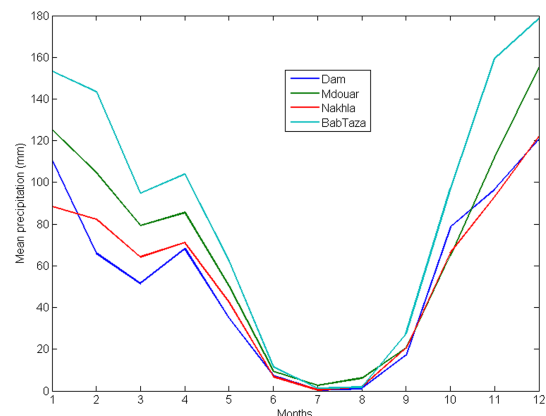


Fig. 2. Monthly mean precipitation (1980–2010) at the different stations.

the vast majority occurred during winter. The base flow was extracted at the beginning of each episode, and the volume of runoff was separated from the base flow modelled by the recession model detailed in Sect. 3.1. The average runoff coefficient of all these episodes is 0.52 but it can vary between 0.19 and 0.89, giving a first indication of the high variability of the initial conditions of saturation of the basin from one episode to another.

2.3 Remote sensing soil moisture

2.3.1 ASCAT

The Advanced SCATterometer (ASCAT) is a real-aperture radar instrument successfully launched on board the MetOp satellite in 2006 that measures radar backscatter at C-band (5.255 GHz) in VV polarization. The spatial resolution of ASCAT is 25 km (resampled at 12.5 km) and, for Morocco, measurements are generally obtained at least once a day. The surface soil moisture product is retrieved from the ASCAT backscatter measurements using the WARP 5.4 retrieval

Table 1. Flood events characteristics.

Dates	Baseflow ($\text{m}^3 \text{s}^{-1}$)	Maximum discharge ($\text{m}^3 \text{s}^{-1}$)	Maximum 1-h rainfall (mm)	Length (h)	Runoff coefficient	Mdouar catchment precipitation average (mm)	Precipitation totals (mm)			
							Dam	Mdouar	Nakhla	Bab Taza
18 May 1984	149	540	7.1	37	0.34	61.6	18.6	56.4	43.1	72.3
26 Nov 1985	77	644	7.9	49	0.19	77.4	42.8	77.7	–	82.8
1 Jan 1986	18.3	366	6.2	27	0.38	20.5	0.7	19.3	6.3	21.7
29 Jan 1986	3	546	6.3	50	0.48	69.9	9	54.2	39.6	87.5
31 Jan 1986	73.3	287	3.8	70	0.68	31.0	–	41.8	21.4	20.7
17 Feb 1986	149	528	6.1	56	0.78	31.6	–	28.8	–	34.5
20 Feb 1986	95.7	406	4.2	33	0.69	16.5	1.5	15.5	–	17.4
7 Mar 1986	25.4	603	7.6	39	0.67	32.7	22.3	42.3	20.3	25
12 Jan 1987	102.8	762	7.8	45	0.33	103.5	43.5	81.5	63.8	129.1
29 Jan 1987	7	1110	12.0	80	0.64	180.7	80.8	145.6	83.7	215
21 Feb 1987	60.8	550	5.9	82	0.81	55.0	24.7	44.4	–	72.6
3 Dec 1987	41.6	464	7.3	41	0.24	52.2	25.3	35.8	12.5	68.3
27 Dec 1995	20	720	12.8	21	0.47	52.3	–	52.8	–	–
14 Nov 2002	0.5	763	16.0	22	0.34	75.6	–	75.6	–	–
8 Dec 2003	61	1355.1	8.8	47	0.89	66.8	–	66.8	–	–
29 Nov 2008	19	308.7	13.0	17	0.28	28.2	–	28.2	–	–

scheme. This method relies on a time series-based change detection approach which was previously developed for the ERS-1/2 scatterometer by Wagner et al. (1999). In this approach, soil moisture is considered to have a linear relationship to backscatter (in dB), while the surface roughness is assumed to have a constant contribution in time. By knowing the typical yearly vegetation cycle and how it influences the backscatter–incidence angle relationship for each location on Earth, the vegetation effects are removed, revealing the soil moisture variations. The derived surface soil moisture product (corresponding to a depth of 2–3 cm) ranges between 0 % (dry) and 100 % (wet) and is available for the period 2007–2011. Validation studies of the ASCAT soil moisture products assessed their reliability for estimating both in-situ and modelled soil moisture observations across different regions in Europe (Albergel et al., 2009; Brocca et al., 2010b, 2011a; Parrens et al., 2012) and also in Africa (Sinclair and Pegram, 2010), thus addressing their use for practical applications.

2.3.2 AMSR-E

The AMSR-E sensor on board the NASA's Aqua satellite provided passive microwave measurements at 6.9 GHz (C-band) and five higher frequencies (including 36.5 GHz Ka-band) between May 2002 and October 2011, with daily ascending (13:30 equatorial local crossing time) and descending (01:30 equatorial local crossing time) overpasses, over a swath width of 1445 km. For this study, both ascending and descending passes are tested to select the configuration, providing the better results. We used the AMSR-E-based Land Parameter Retrieval Model (LPRM) v5 (Owe et al.,

2001, 2008) product, which is produced in collaboration between the VU University Amsterdam and NASA. This product was found to provide better agreement with in-situ observations than other publicly available products (e.g. Brocca et al., 2011a). LPRM is a three-parameter retrieval model (soil moisture, vegetation optical depth, and soil/canopy temperature) from passive microwave data based on a microwave radiative transfer model. It uses the dual polarized channel (either 6.9 or 10.6 GHz) for the retrieval of both surface soil moisture and vegetation optical depth. The land surface temperature is derived separately from the vertically polarized 36.5 GHz channel. Here, the gridded 0.25° soil moisture product is employed; the dataset covers the period 2002–2011. Similarly to ASCAT, the AMSR-E-LPRM soil moisture product was also extensively validated (e.g. De Jeu et al., 2008; Dorigo et al., 2010; Brocca et al., 2011a).

2.3.3 Soil water index

For many applications, the knowledge of soil moisture for a very thin surface layer is not sufficient. In this study, the semi-empirical approach (also known as exponential filter) proposed by Wagner et al. (1999) is adopted to obtain a root-zone soil moisture product (SWI, Soil Water Index) from the satellite-based surface soil moisture observations. The SWI depends on a single parameter T (characteristic time length) that represents the time scale of soil moisture variation. The reader is referred to Wagner et al. (1999) and Albergel et al. (2009) for a detailed description of the exponential filter approach. Systematic differences between satellite-derived and modelled data of soil moisture prevent

an absolute agreement between the two time series. Consequently, in this study remotely sensed data are normalized through a linear regression fit between satellite and modelled soil moisture values, thus obtaining the SWI* index (Brocca et al., 2011a).

3 Flood modelling

This section describes the conceptual model for the Mdouar catchment. It includes several components: the base flow, the losses, and the flow transfer towards the outlet. The modelling has been carried out through the Hydrologic Modeling System (HEC-HMS) software (USACE, 2010).

3.1 Base flow

A good knowledge of base flow is important to model the recession of the hydrograph and to estimate the flood volume. Here, an exponential recession base flow model was selected; this approach is adequate for basins where the flood volume is strongly influenced by rainfall events (USACE, 2010).

$$B_t = B_i R_c^t, \quad (1)$$

with B_i ($\text{m}^3 \text{s}^{-1}$) being the initial discharge at the beginning of the simulation and R_c ([0–1]), the recession constant, describing the decay rate of the base flow. Two parameters need to be estimated, R_c and the threshold, T_d ([0–1]), being the point in the hydrograph where total flow equals base flow; it is expressed as a proportion of the peak flow of the flood.

3.2 Losses

In this study, the Soil Conservation Service loss model (USDA-SCS, 1985) has been retained. Different versions of this model have been proposed (Michel et al., 2005); however, here the classical version has been chosen for a better comparability of the results with other studies. Indeed, many studies have successfully used this model in semi-arid Mediterranean environments (e.g. Brocca et al., 2009a; Trambly et al., 2010). Moreover, this model is suitable to account for initial soil moisture conditions through the adjustment of the parameter S , the soil potential maximum retention that can be related to various indicators of soil moisture. In the SCS model, the cumulative excess at time t is (USACE, 2010)

$$P_e = \frac{(P - 0.2S)^2}{P + 0.8S}. \quad (2)$$

P_e is the accumulated precipitation excess at time t , P the accumulated rainfall depth at time t , and S the potential maximum retention.

3.3 Transfer

The rainfall excess is routed to the outlet by using the Clark unit hydrograph. This method is particularly effective for

reproducing complex hydrographs in basins with variable topography and land use (Sabol, 1988). The Clark unit hydrograph represents two processes: translation and attenuation (USACE, 2010). The translation is based on a synthetic time–area histogram with a time of concentration T_c (hours). The histogram represents the watershed area contributing to flow at the outlet with time. Attenuation is modelled by a reservoir representing the impact of basin storage, with one constant linear reservoir parameter, R . The average outflow of reservoir for a period t is given by

$$O_t = C_A I_t + C_B O_{t-1}, \quad (3)$$

with I_t the inflow into the reservoir at time t ; C_A , C_B , the coefficients calculated for each time step (Δt) with the equation $C_B = 1 - C_A$; and

$$C_A = \frac{\Delta t}{R + 0.5 \Delta t}. \quad (4)$$

3.4 Model calibration and goodness-of-fit measures

The quantitative measure of the degree of adjustment is given by the objective function, measuring the difference between an observed and simulated hydrograph. Here, the peak-weighted root mean square error (PWRMSE) was selected as the objective function. It has the advantage of considering both the magnitude and time synchronization of the flood peak by giving more weight to values of above-average flow rates for a given event.

$$\text{PWRMSE} = \sqrt{\frac{\sum_{t=1}^N (Q_{\text{Obs}}(t) - Q_{\text{Sim}}(t))^2 \frac{Q_{\text{Obs}}(t) + Q_A}{2Q_A}}{N}}. \quad (5)$$

Q_{Obs} is the observed flow, the Q_{Sim} the simulated flow at time step t , and Q_A the mean observed discharge.

The calibration process aims to find the optimal parameters to minimize the objective function. Here, the method of Nelder and Mead (Rao, 1978) that uses the Simplex approach, was chosen to optimize the different parameters. Beside the visual inspection of simulated hydrographs, different metrics exist to measure the ability of the rainfall–runoff model to reproduce the flood events. The Nash–Sutcliffe (NS) efficiency coefficient (Nash and Sutcliffe, 1970) was used to evaluate the agreement between the simulated and the reference runoff hydrograph. In addition, the average values of the absolute errors on the estimated peak flow and volume obtained for each event were also computed to analyze the results.

3.5 Estimators of antecedent wetness conditions

Different approaches exist in the literature to estimate the S parameter for each flood event, either using base flow, antecedent rainfall, or soil moisture measured in situ or through satellites. In the classical SCS approach, the S-values

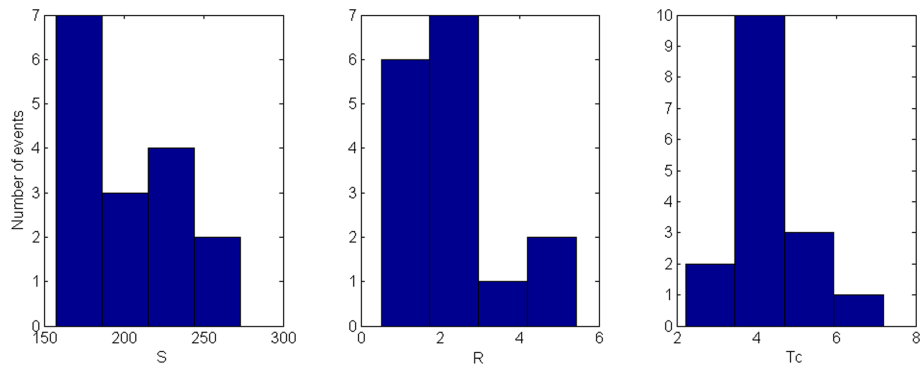


Fig. 3. Distribution of the calibrated model parameters S , R and T_c .

are modulated based on the 5-days antecedent precipitation (USDA-SCS, 1985); however, several studies have shown that, mainly for Mediterranean catchments with a strong seasonality of the soil moisture temporal pattern, this approach was not adequate (Brocca et al., 2009a,b; Tramblay et al., 2010). In our study the calibrated S parameter is first compared to different estimators of antecedent wetness conditions, including

1. LogQnJ: the logarithm of the mean discharge over the n previous days. Since daily discharge is routinely monitored at Mdouar river section, the mean runoff averaged over several days prior to a flood event is computed, with the optimal number of days selected to maximize the correlation with S .
2. API: the antecedent precipitation index (Kohler and Linsley, 1951). This index is intended to reproduce the saturation state of the basin by calculating the cumulative rainfall of previous days. The index of one day j is the index of the previous day $j - 1$ multiplied by the factor k . If rainfalls occur on day j , it is added to the index

$$\text{API}_j = k \text{API}_{j-1} + P_j. \quad (6)$$

The k parameter is here optimized to maximize the correlation between API and S .

3. SMA: a continuous Soil Moisture Accounting model. Here, a simplified version (without percolation) of the SMA reservoir of the GR4J model (Perrin et al., 2003) is used, following the same approach as Javelle et al. (2010). The SMA model computes the water level, S^*/A , of the production store of maximum capacity A , by using daily rainfall depth over the Mdouar catchment interpolated from the rain gauges by inverse distance and the daily evaporation measured at the Makhazine Dam between 1984 and 2011. The complete equations are available in Perrin et al. (2003).

Successively, the ability of different remote sensing products to reproduce the simulated soil storage data, S^*/A , by the continuous SMA model is analyzed.

4 Results

4.1 Calibration of the hydrological model

The model structure detailed in the previous section is used to model the 16 available flood events in the Mdouar catchment (655 km²). Due to the limited number of rain gauges, precipitation was interpolated by the method of the inverse distance to compute areal rainfall over the catchment. An hourly time step was chosen, given the observed catchment response times between 2 and 4 h, depending on the event. Since the objective is to test a model suitable for operational forecasting, it is necessary to set all parameters and provide techniques for estimating the parameters that cannot be fixed to a single value for all events. Initially, the parameters are calibrated to reproduce each flood event.

The parameters for the recession model were determined by the analysis of the recession limbs of the flood hydrographs. They are assumed constant for every flood event, since they are dependent on the morphology of the basin. The recession constant (R_c) was set at 0.75 and the threshold (T_d) to 0.3. Therefore, only the initial base flow at the beginning of each event is necessary, varying from 0.5 to 149 m³ s⁻¹ (Table 1). The parameters of the Clark hydrograph are also determined by the basin characteristics such as size, shape and topography. The values of R and T_c were first calibrated for each episode, successively with different fixed S values to avoid dependencies between production and transfer model parameters. Then, the S parameter, representing the deficit of water storage in the basin prior to an event, is also calibrated for each episode. Figure 3 shows the distribution of the optimal S , R and T_c values obtained for each event after this calibration procedure. The median values of $R = 2.5$ h and $T_c = 4.1$ h are suitable for most episodes, except for two events (29 January 1986 and 21 February 1987) for

Table 2. Model calibration and validation results.

		Total runoff			Direct runoff		
		NS ¹	ErrQp ²	ErrVol ³	NS ¹	ErrQp ²	ErrVol ³
Calibration		0.81	0.18	0.09	0.83	0.19	0.11
Validation by leave-one-out	LogQ6J	0.66	0.27	0.19	0.68	0.29	0.26
	API	0.7	0.27	0.18	0.73	0.29	0.25
	SMA	0.71	0.25	0.19	0.75	0.27	0.26
	Median S	-0.54	0.5	0.37	0.38	0.34	0.61
Validation by split-sample	LogQ6J	0.63	0.29	0.16	0.70	0.26	0.18
	API	0.63	0.28	0.16	0.76	0.24	0.22
	SMA	0.70	0.27	0.14	0.77	0.24	0.22
	Median S	0.58	0.35	0.28	0.66	0.29	0.41

¹ NS: mean of NS-values for each event; ² ErrQp: mean of absolute values of Peak discharge error for each event; ³ ErrVol: mean of absolute values of volume error for each event.

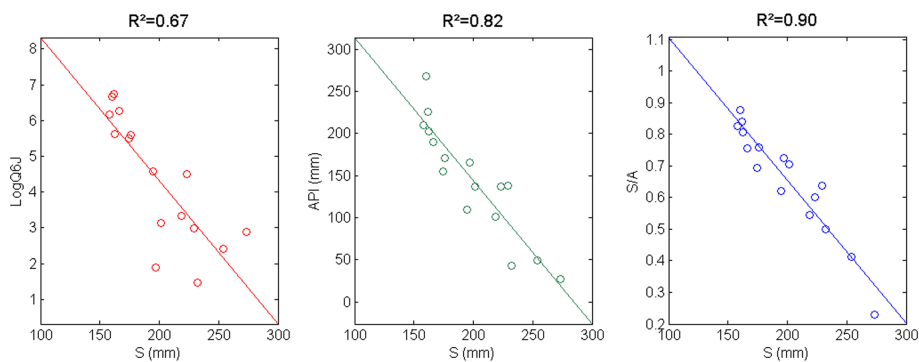


Fig. 4. Relationships between S and the antecedent wetness conditions indicators LogQ6J, API and S^*/A .

which the calibrated R-values are exceeding 4. However, for these two events the model simulations are not very sensitive to the values taken by this parameter. On the contrary, a preliminary analysis has shown that the flood simulations were much more sensitive to the S parameter.

The optimized values of S for each event ranged from 157.8 to 273.3 mm, indicating a wide range of initial conditions of soil saturation at the beginning of the events. Figure 3 shows a great variability in the calibrated values of the S parameter, indicating that a single mean – or median – value of the S parameter may not be adequate for most of the events. The calibrated S parameter values have been related to the different estimators of antecedent wetness conditions (Fig. 4). The optimal relationship between S and the discharge of the previous days was obtained when averaging the logarithm of the discharge over 6 days prior to the flood event dates (thereafter LogQ6J), with $R^2 = 0.67$. Similarly, the optimal relationship between S and API was obtained for $k = 0.98$, with $R^2 = 0.82$. By comparison, if using the cumulative rainfall 5 days prior to the flood events, adopted in the classical formulation of the SCS-CN method, $R^2 = 0.19$.

Finally, the best relationship is obtained with the S^*/A level of the SMA store for $A = 218$ mm, leading to a $R^2 = 0.90$.

The model performance obtained with the S parameter calibrated for each event is shown in Table 2, leading to a mean Nash value of 0.81. The observed and simulated flood hydrographs are displayed in Fig. 5. Half of the flood events have different successive peaks of discharge, caused by the long duration of rainfall events in this region. Indeed, the most important rainfall events are caused by the cyclonic activity over the Atlantic Ocean, they usually last longer than 24 h with a strong intermittency. For some events the flood peaks are underestimated most certainly because of the uncertainties of rainfall over the catchment; rainfall is indeed the most critical input for flood modelling (Andréassian et al., 2001). However, the causes for model failure may be manifold; the model structure, parameter values or stream flow measurements may also be blamed for low model efficiency. Despite some discrepancies, the model is able to reproduce well the flood dynamics at the hourly time step.

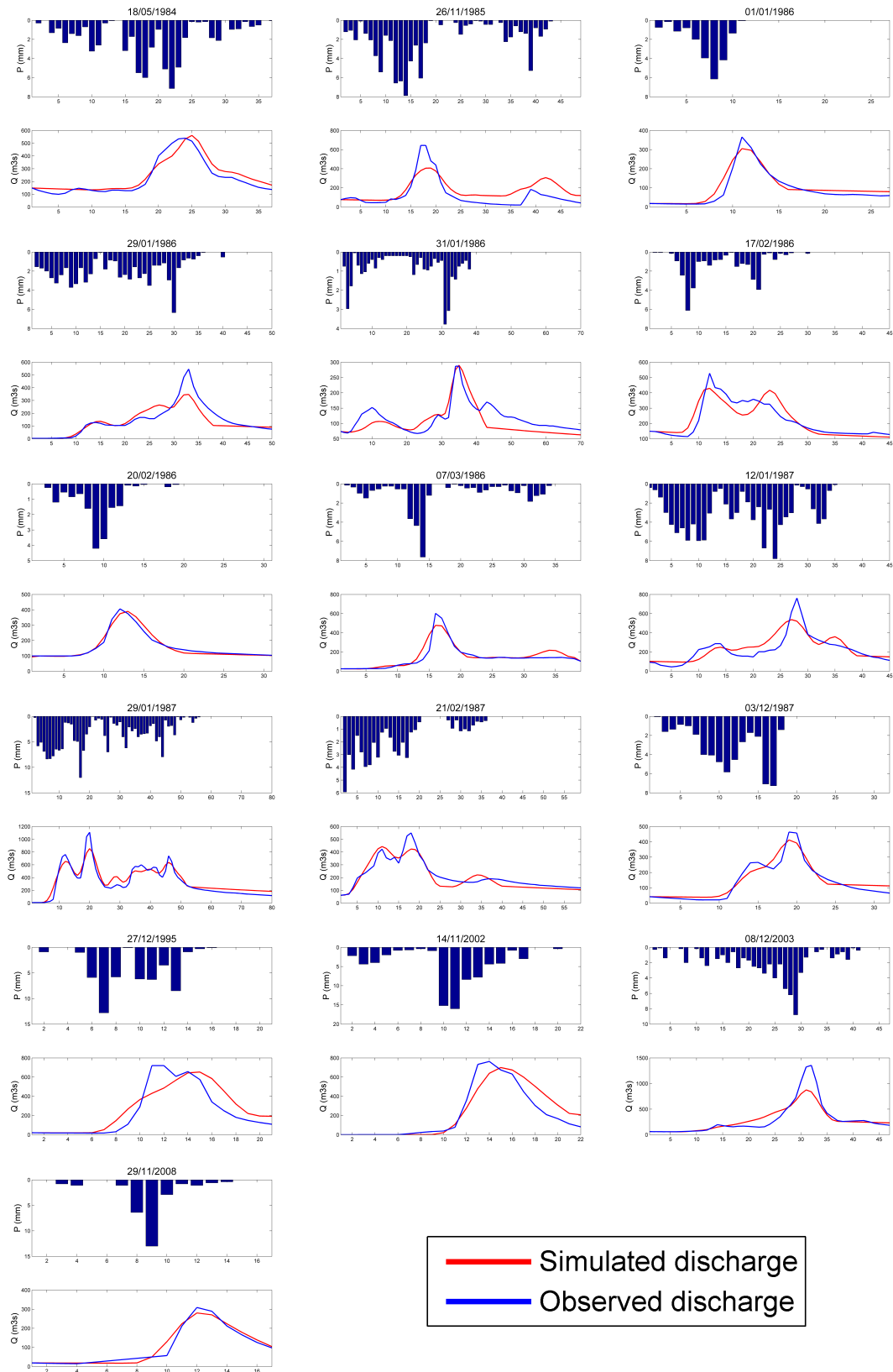


Fig. 5. Observed and simulated hydrographs at the hourly time step.

Table 3. Summary of the performance of the two satellite soil moisture products for estimating the data modelled through the SMA model.

Period	2002–2011			2007–2011		
	R^1	RMSE ²	N^3	R^1	RMSE ²	N^3
score						
ASCAT	–	–		0.974	0.071	1437
ASCAT anomalies	–	–		0.743	0.45	1437
AMSR-E	0.914	0.122	2243	0.916	0.122	1192
AMSR-E anomalies	0.659	0.555	2243	0.734	0.483	1192

¹ R : correlation coefficient, ² RMSE: root mean square error, ³ N : sample size.

4.2 Validation of the hydrological model

The model is validated using two different approaches. Due to the limited sample size, a leave-one-out resampling procedure is implemented; for the n flood events, each event i is successively removed and the relationship between S and the three different antecedent conditions estimators (LogQ6J, API and SMA) is re-estimated using the remaining $n - 1$ episodes. The R and T_c parameters for the event i are fixed at the median of the R and T_c parameters calibrated for the $n - 1$ episodes. To provide a simple benchmark model, a model version is introduced in which S is fixed at the median optimized value of the remaining $n - 1$ episodes. The parameter values obtained by this procedure are then used to model the flood event i , and the simulated discharge is compared to the observed discharge. This approach provides insights into the uncertainties on many episodes, and thus evaluates the performance that the model could have with new episodes. It must be noted that by comparison to the S parameter, the R and T_c parameters vary only slightly with this validation approach. In addition, a classical split-sample approach is tested, using the 10 first events for calibration and the remaining 6 events for validation.

Results are presented in Table 2, indicating a better model performance when using the SMA model to estimate the S parameter values, with Nash coefficients of 0.71 for total runoff and 0.75 for direct runoff, using the leave-one-out procedure. Similar results are obtained using a split-sample validation with Nash coefficients of 0.70 and 0.77, respectively, for total runoff and direct runoff. The lowest errors on peak discharge are obtained when setting S with the SMA model. When using a median S parameter, instead of estimating S from antecedent wetness conditions, the model performance for total or direct runoff is very low with negative Nash values. This highlights the importance of taking into account the antecedent wetness conditions in this type of catchment.

4.3 Antecedent moisture conditions from remote sensing data

Finally, the capability of the two satellite soil moisture products derived by ASCAT and AMSR-E sensors to reproduce the modelled soil moisture data with the SMA approach was

analyzed. In particular, the comparison was shown between the normalized SWI, SWI^* , and modelled data, considering both the relative soil moisture values and their anomalies. We note that the comparison considering the anomalies is more robust, as the strong seasonality of soil moisture could artificially produce high correlations (Albergel et al., 2009). Anomalies were computed as in Albergel et al. (2009) by considering a 5-week sliding window. For the computation of the SWI, the T parameter of the semi-empirical approach by Wagner et al. (1999) has to be estimated. It was obtained here by maximizing the correlation between satellite and modelled data considering the whole dataset, i.e. 2002–2011 for AMSR-E and 2007–2011 for ASCAT. The obtained T -values are found to be equal to 26 and 15 days for ASCAT and AMSR-E, respectively, in accordance with the results obtained by Brocca et al. (2010a) who contrasted modelled and ASCAT-derived soil moisture data for several catchments in central Italy.

Figure 6 shows the comparison between modelled, S^*/A , and satellite soil moisture data for the period 2007–2011 for which both products are available, while Table 3 summarizes all the comparisons in terms of correlation coefficient, R , and root mean square error, RMSE. As can be seen, the performance of both satellite products for the period 2007–2011 is high, with R -values equal to 0.974 and 0.916 for ASCAT and AMSR-E, respectively. Also, the comparison in terms of anomalies provide satisfactory results with R -values higher than 0.73. For AMSR-E, even when considering the whole period 2002–2011 (10-yr) the performance is still good. The good agreement between satellite and modelled data gives a clear indication for the possibility to use this data source for the estimation of the antecedent moisture conditions used in the initialization of the rainfall–runoff model. This approach could be really effective, as long-term time series of rainfall and evaporation (needed to run the SMA model) are no longer required.

5 Conclusions and perspectives

An event-based rainfall–runoff model has been developed in a Moroccan catchment located in the north of the country. The model is able to reproduce the flood events at the

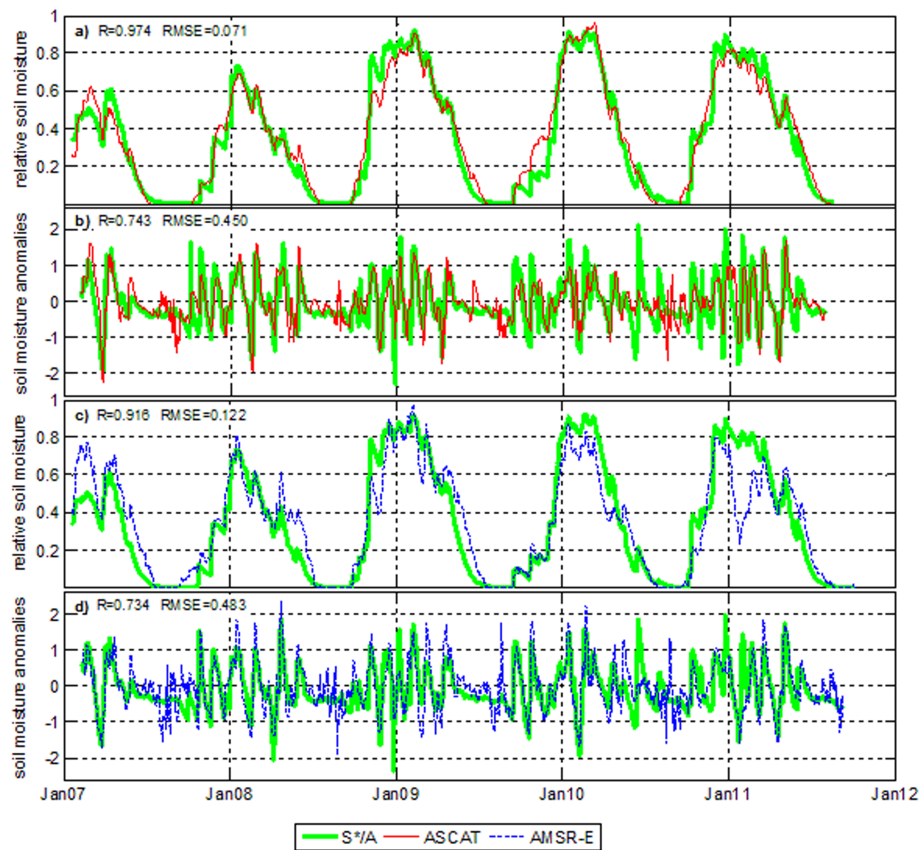


Fig. 6. Comparison between modelled relative soil moisture data, S^*/A , and the two satellite soil moisture products, ASCAT and AMSR-E, for the common period 2007–2011. (a) and (c) Relative soil moisture values, and (b) and (d) soil moisture anomalies.

hourly time step, even if only a limited number of rain gauges were available. Different estimators of the antecedent wetness conditions of the catchment have been tested; the best results were obtained with a daily soil moisture accounting model. In addition, two different satellite soil moisture products were tested (ASCAT and AMSR-E) and both were able to reproduce with satisfactory accuracy the daily soil moisture dynamics simulated by the SMA model. Therefore, this study demonstrates the feasibility of rainfall–runoff modelling at sub-daily timescales in northern Morocco. Due to the limited data availability, it was not possible to estimate directly the initial conditions of the model with satellite data. However, since the soil moisture accounting model showed a strong correlation with both the initial condition of the event-based model and AMSRE or ASCAT data, this shows the potential interest of remote sensing data to estimate the initial conditions, avoiding the use of a soil moisture accounting model that requires long time series of precipitation and evapotranspiration. The approved continuity of the satellite missions (AMSR-E will be shortly followed up by the recently launched AMSR-2 on board GCOM-W1, while MetOp-B/ASCAT was launched in September 2012) guarantees that such a service can be continued operationally at least

until 2020. With the current deployment of hydrometric data transmission systems in several river basins of Morocco, this approach could be useful to set up real-time models to improve dam management. Several large dams are located in northwestern Morocco in catchments with similar characteristics, therefore the proposed approach is likely to be useful in this region.

If more data would be available, continuous modelling approaches could also be tested to compare the simulation results. The model efficiency could definitely be improved by increasing the knowledge of the rainfall amounts intercepted by the catchment during the flood events. This could be accomplished by the installation of additional rain gauges, in particular in the most elevated areas. Another option would be to consider spatial rainfall data that could be provided by the meteorological radar recently installed in the city of Larache (50 km downstream). Also, satellite-based precipitation datasets such as the Tropical Rainfall Measuring Mission (TRMM) Multisatellite Precipitation Analysis (TMPA), or the Precipitation Estimation from Remotely Sensed Information using Artificial Neural Network (PERSIANN) could be tested to evaluate the spatial variability during rainfall events (Hughes, 2006; Ward et al., 2011). Further studies

should focus on the applicability of such models for other catchments in a regional context, and provide guidelines for application in the case of partly gauged or ungauged catchments. The good relationships obtained between satellite data and modelled soil moisture provides insights for further research on different catchments in Northern Africa to palliate the lack of ground measurements for hydrological applications.

Acknowledgements. This research project has been supported by the Institut de Recherche pour le Développement (IRD, France); the financial support provided is gratefully acknowledged. The data was provided by the department of Water Research and Planning (DRPE) in Morocco. Thanks are due to the staff of the Hydrometeorology division for their collaboration. Wouter Dorigo is partly funded by the EU-FP-7 Global Water Scarcity Information Service (GloWASIS) project (Grant Agreement No. 262255). The authors would like to thank the Handling Editor, Anas Ghadouani, and Charles Perrin, Pierre Javelle, and Philipp Meier for their useful reviews.

Edited by: A. Ghadouani



The publication of this article is financed by CNRS-INSU.

References

- Albergel, C., Rüdiger, C., Carrer, D., Calvet, J.-C., Fritz, N., Naeimi, V., Bartalis, Z., and Hasenauer, S.: An evaluation of ASCAT surface soil moisture products with in-situ observations in Southwestern France, *Hydrol. Earth Syst. Sci.*, 13, 115–124, doi:10.5194/hess-13-115-2009, 2009.
- Amri, R., Zribi, M., Chabaane, Z. L., Wagner, W., and Hasenauer, S.: Analysis of C-band scatterometer moisture estimations derived over a semiarid region, *IEEE T. Geosci. Remote*, 50, 2630–2638, 2012.
- Andréassian, V., Perrin, C., Michel, C., Usart-Sanchez, I., and Lavabre, J.: Impact of imperfect rainfall knowledge on the efficiency and the parameters of watershed models, *J. Hydrol.*, 250, 206–223, 2001.
- Beck, H. E., de Jeu, R. A. M., Schellekens, J., van Dijk, A. I. J. M., and Bruijnzeel, L. A.: Improving Curve Number Based Storm Runoff Estimates Using Soil Moisture Proxies, *IEEE J. Select. Top. Appl. Earth*, 2, 250–259, 2009.
- Berthet, L., Andréassian, V., Perrin, C., and Javelle, P.: How crucial is it to account for the antecedent moisture conditions in flood forecasting? Comparison of event-based and continuous approaches on 178 catchments, *Hydrol. Earth Syst. Sci.*, 13, 819–831, doi:10.5194/hess-13-819-2009, 2009.
- Bouaicha, R. and Benabdelfadel, A.: Variabilité et gestion des eaux de surface au Maroc, *Sécheresse*, 21, 1–5, 2010.
- Brocca, L., Melone, F., Moramarco, T., and Singh, V. P.: Assimilation of observed soil moisture data in storm rainfall–runoff modelling, *J. Hydrol. Eng.-ASCE*, 14, 153–165, 2009a.
- Brocca, L., Melone, F., Moramarco, T., and Morbidelli, R.: Antecedent wetness conditions based on ERS scatterometer data, *J. Hydrol.*, 364, 73–87, 2009b.
- Brocca, L., Melone, F., Moramarco, T., Wagner, W., Naeimi, V., Bartalis, Z., and Hasenauer, S.: Improving runoff prediction through the assimilation of the ASCAT soil moisture product, *Hydrol. Earth Syst. Sci.*, 14, 1881–1893, doi:10.5194/hess-14-1881-2010, 2010a.
- Brocca, L., Melone, F., Moramarco, T., Wagner, W., and Hasenauer, S.: ASCAT Soil Wetness Index validation through in-situ and modeled soil moisture data in central Italy, *Remote Sens. Environ.*, 114, 2745–2755, 2010b.
- Brocca, L., Hasenauer, S., Lacava, T., Melone, F., Moramarco, T., Wagner, W., Dorigo, W., Matgen, P., Martínez-Fernández, J., Llorens, P., Latron, J., Martin, C., and Bittelli, M.: Soil moisture estimation through ASCAT and AMSR-E sensors: an inter-comparison and validation study across Europe, *Remote Sens. Environ.*, 115, 3390–3408, 2011a.
- Brocca, L., Melone, F., and Moramarco, T.: Distributed rainfall–runoff modeling for flood frequency estimation and flood forecasting, *Hydrol. Process.*, 25, 2801–2813, 2011b.
- Brocca, L., Moramarco, T., Melone, F., Wagner, W., Hasenauer, S., and Hahn, S.: Assimilation of Surface- and Root-Zone ASCAT Soil Moisture Products Into Rainfall–Runoff Modeling, *IEEE T. Geosci. Remote*, 50, 2542–2555, 2012.
- Castillo, V. M., Gomez-Plaza, A., and Martinez-Mena, M.: The role of antecedent soil water content in the runoff response of semi-arid catchments: a simulation approach, *J. Hydrol.*, 284, 114–130, 2003.
- Cousta, M., Bouvier, C., Borrell-Estupina, V., and Jourde, H.: Flood modelling with a distributed event-based parsimonious rainfall–runoff model: case of the karstic Lez river catchment, *Nat. Hazards Earth Syst. Sci.*, 12, 1119–1133, doi:10.5194/nhess-12-1119-2012, 2012.
- De Jeu, R. A. M., Wagner, W., Holmes, T. R. H., Dolman, A. J., Van De Giesen, N. C., and Friesen, J.: Global Soil Moisture Patterns Observed by Space Borne Microwave Radiometers and Scatterometers, *Surv. Geophys.*, 29, 399–420, 2008.
- Dorigo, W. A., Scipal, K., Parinussa, R. M., Liu, Y. Y., Wagner, W., de Jeu, R. A. M., and Naeimi, V.: Error characterisation of global active and passive microwave soil moisture datasets, *Hydrol. Earth Syst. Sci.*, 14, 2605–2616, doi:10.5194/hess-14-2605-2010, 2010.
- Gruhier, C., de Rosnay, P., Kerr, Y., Mougin, E., Ceschia, E., Calvet, J.-C., and Richaume, P.: Evaluation of AMSR-E soil moisture product based on ground measurements over temperate and semi-arid regions, *Geophys. Res. Lett.*, 35, L10405, doi:10.1029/2008GL033330, 2008.
- Huang, M., Gallichand, J., Dong, C., Wang, Z., and Shao, M.: Use of soil moisture data and curve number method for estimating runoff in the Loess Plateau of China, *Hydrol. Process.*, 21, 1471–1481, 2007.

- Hughes, D. A.: Comparison of satellite rainfall data with observations from gauging station networks *J. Hydrol.*, 327, 399–410, 2006.
- Hugues, D. A.: Regionalization of models for operational purposes in developing countries: an introduction, *Hydrol. Res.*, 42, 331–337, 2011.
- Javelle, P., Fouchier, C., Arnaud, P., and Lavabre, J.: Flash flood warning at ungauged locations using radar rainfall and antecedent soil moisture estimations, *J. Hydrol.*, 397, 267–274, 2010.
- Kohler, M. A. and Linsley, R. K.: Predicting Runoff from Storm Rainfall, Res. Paper 34, US Weather Bureau, Washington, DC, 1951.
- Llasat, M. C., Llasat-Botija, M., Prat, M. A., Porcú, F., Price, C., Mugnai, A., Lagouvardos, K., Kotroni, V., Katsanos, D., Michaelides, S., Yair, Y., Savvidou, K., and Nicolaidis, K.: High-impact floods and flash floods in Mediterranean countries: the FLASH preliminary database, *Adv. Geosci.*, 23, 47–55, doi:10.5194/adgeo-23-47-2010, 2010.
- Matgen, P., Fenicia, F., Heitz, S., Plaza, D., de Keyser, R., Pauwels, V. R. N., Wagner, W., and Savenije, H.: Can ASCAT-derived soil wetness indices reduce predictive uncertainty in well-gauged areas? A comparison with in-situ soil moisture gauges in an assimilation application, *Adv. Water Resour.*, 44, 49–65, 2012.
- Meier, P., Frömel, A., and Kinzelbach, W.: Hydrological real-time modelling in the Zambezi river basin using satellite-based soil moisture and rainfall data, *Hydrol. Earth Syst. Sci.*, 15, 999–1008, doi:10.5194/hess-15-999-2011, 2011.
- Michel, C., Andréassian, V., and Perrin, C.: Soil Conservation Service Curve Number method: How to mend a wrong soil moisture accounting procedure?, *Water Resour. Res.*, 41, W02011, doi:10.1029/2004WR003191, 2005.
- Mishra, S. K. and Singh, V. P.: Soil conservation service curve number (SCS-CN) methodology, Kluwer, Dordrecht, The Netherlands, 2003.
- Nash, J. E. and Sutcliffe, J. V.: River flow forecasting through conceptual models part I: a discussion of principles, *J. Hydrol.*, 10, 282–290, 1970.
- Norbiato, D., Borga, M., Degli Esposti, S., Gaume, E., and Anquetin, S.: Flash flood warning based on rainfall depth-duration thresholds and soil moisture conditions: an assessment for gauged and ungauged basins, *J. Hydrol.*, 362, 274–290, 2008.
- Owe, M., De Jeu, R. A. M., and Walker, J.: A methodology for surface soil moisture and vegetation optical depth retrieval using the microwave polarization difference index, *IEEE T. Geosci. Remote.*, 39, 1643–1654, 2001.
- Owe, M., De Jeu, R. A. M., and Holmes, T. R. H.: Multi-Sensor Historical Climatology of Satellite-Derived Global Land Surface Moisture, *J. Geophys. Res.*, 113, F01002, doi:10.1029/2007JF000769, 2008.
- Parrens, M., Zakharova, E., Lafont, S., Calvet, J.-C., Kerr, Y., Wagner, W., and Wigneron, J.-P.: Comparing soil moisture retrievals from SMOS and ASCAT over France, *Hydrol. Earth Syst. Sci.*, 16, 423–440, doi:10.5194/hess-16-423-2012, 2012.
- Perrin, C., Michel, C., and Andréassian, V.: Improvement of a parsimonious model for streamflow simulation, *J. Hydrol.*, 279, 275–289, 2003.
- Rao, S. S.: Optimization – Theory and applications, Wiley Eastern Limited, India, p. 747, 1978.
- Rodríguez-Blanco, M. L., Taboada-Castro, M. M., and Taboada-Castro, M. T.: Rainfall–runoff response and event-based runoff coefficients in a humid area (northwest Spain), *Hydrolog. Sci. J.*, 57, 1–15, 2012.
- Sabol, G. V.: Clark Unit Hydrograph and r-parameter estimation, *J. Hydraul. Eng.*, 114, 103–111, 1988.
- Sinclair, S. and Pegram, G. G. S.: A comparison of ASCAT and modelled soil moisture over South Africa, using TOPKAPI in land surface mode, *Hydrol. Earth Syst. Sci.*, 14, 613–626, doi:10.5194/hess-14-613-2010, 2010.
- Tramblay, Y., Bouvier, C., Martin, C., Didon-Lescot, J.-F., Todorovik, D., and Domergue, J.-M.: Assessment of initial soil moisture conditions for event-based rainfall–runoff modeling, *J. Hydrol.*, 387, 176–187, 2010.
- Tramblay, Y., Bouvier, C., Ayrat, P.-A., and Marchandise, A.: Impact of rainfall spatial distribution on rainfall–runoff modelling efficiency and initial soil moisture conditions estimation, *Nat. Hazards Earth Syst. Sci.*, 11, 157–170, doi:10.5194/nhess-11-157-2011, 2011.
- Tramblay, Y., Badi, W., Driouech, F., El Adlouni, S., Neppel, L., and Servat, E.: Climate change impacts on extreme precipitation in Morocco, *Global Planet. Change*, 82–83, 104–114, 2012.
- USACE: Hydrologic Modeling System HEC-HMS, Technical reference manual version 3.5, US Army Corps of Engineers, Hydrologic Engineering center, Davis, USA, 2010.
- USDA-SCS: National Engineering Handbook, Section 4, Hydrology, Washington, DC, USA, 1985.
- Wagener, T., Gupta, H., Yatheendradas, S., Goodrich, D., Unkrich, C., and Shaffner, M.: Understanding sources of uncertainty in flash-flood forecasting for semi-arid regions, *Proceedings of Symposium HS2004 at IUGG2007, IAHS Publ. 313*, Perugia, Italy, 2007.
- Wagner, W., Lemoine, G., and Rott, H.: A method for estimating soil moisture from ERS scatterometer and soil data, *Remote Sens. Environ.*, 70, 191–207, 1999.
- Ward, E., Buytaert, W., Peaver, L., and Wheeler, H.: Evaluation of precipitation products over complex mountainous terrain: A water resources perspective, *Adv. Water Resour.*, 34, 1222–1231, 2011.