



HAL
open science

Ordered mesoporous Fe-Al₂O₃ based-catalysts synthesized via a direct "one-pot" method for the dry reforming of a model biogas mixture

Karam Jabbour, Ali Saad, Lena Inaty, Anne Davidson, Pascale Massiani, Nissrine El Hassan

► To cite this version:

Karam Jabbour, Ali Saad, Lena Inaty, Anne Davidson, Pascale Massiani, et al.. Ordered mesoporous Fe-Al₂O₃ based-catalysts synthesized via a direct "one-pot" method for the dry reforming of a model biogas mixture. *International Journal of Hydrogen Energy*, 2019, 44 (29), pp.14889-14907. 10.1016/j.ijhydene.2019.04.110 . hal-02414764

HAL Id: hal-02414764

<https://hal.science/hal-02414764v1>

Submitted on 15 Dec 2020

HAL is a multi-disciplinary open access archive for the deposit and dissemination of scientific research documents, whether they are published or not. The documents may come from teaching and research institutions in France or abroad, or from public or private research centers.

L'archive ouverte pluridisciplinaire **HAL**, est destinée au dépôt et à la diffusion de documents scientifiques de niveau recherche, publiés ou non, émanant des établissements d'enseignement et de recherche français ou étrangers, des laboratoires publics ou privés.

Ordered mesoporous Fe-Al₂O₃ based-catalysts synthesized via a direct "one-pot" method for the dry reforming of a model biogas mixture

Karam Jabbour^{a,*}, Ali Saad^a, Lena Inaty^a, Anne Davidson^b, Pascale Massiani^{b,c}, Nissrine El Hassan^{a,**}

a Department of Chemical Engineering, Faculty of Engineering, University of Balamand, P.O. Box 100, Tripoli, Lebanon

b Sorbonne Universités, UPMC Université Paris 06, Laboratoire de Réactivité de Surface, 4 place Jussieu, 75005 Paris, France

c CNRS UMR 7197, UPMC, Laboratoire de Réactivité de Surface, 4 place Jussieu, 75005 Paris, France

Abstract

Biogas plays a vital role in the emerging renewable energy sector and its efficient utilization is attracting significant attention as an alternative energy carrier to non-renewable fossil fuel resources. Since biogas consists mainly of CH₄ and CO₂, dry reforming of methane arises as an appropriate process enabling its chemical conversion to high-quality synthesis gas (syngas: H₂ and CO mixtures). In this study, we synthesized via a direct "one-pot" method following an evaporation-induced self-assembly approach, ordered mesoporous Fe_{10%}, Ni_{5%} and Fe_{x%}Ni_(1-x) (x: 2.5, 5 or 7.5%) in Al₂O₃ as catalysts for syngas production via dry reforming of a model biogas mixture (CH₄/CO₂ ¼ 1.8, at a temperature of 700 °C). Monometallic Fe_{10%}Al₂O₃ catalyst presented lower reactivity levels and slightly deactivated during catalysis compared to stable Ni_{5%}Al₂O₃. According to physico-chemical characterization techniques, the incomplete reduction of Fe₂O₃ into Fe₃O₄ rather than Fe⁰ nanoparticles (catalytically active) coupled with the segregation of Fe₃O₄ oxides were the main factors leading to the low performance of mesoporous Fe_{10%}Al₂O₃. These drawbacks were overcome upon the partial substitution of Fe by Ni (another transition metal) forming specifically bimetallic Fe_{5%}Ni_{5%}Al₂O₃ displaying reactivity levels close to thermodynamic expected ones. The formation of Fe-Ni alloys stabilized iron inside alumina matrix and protected it from segregation. Along with the confinement effect, spent catalyst characterizations showed high resistance towards coke deposition.

Introduction

The decline in non-renewable fossil fuel energy reserves and associated environmental regulations regarding uncontrolled CO₂ emissions stress on the consideration of sustainable alternatives for energy production purposes. Biogas, produced from the anaerobic digestion of organic waste, is a gaseous mixture of CH₄ (50e70 vol%), CO₂ (30e50 vol%) along with small amounts of impurities such as NH₃, H₂S, organic sulphur and water vapour, that is recently gaining significant industrial attention as a renewable source of carbon [1,2]. Conventionally, after purification, biogas can be directly combusted for heat and electricity generation yet, the heat value of such combustion processes is low due to the high

concentration of CO₂ in the feed gas [3]. From an efficiency point of view, biogas can be either converted into synthesis gas (syngas, H₂ and CO mixtures) for versatile industrial applications. Depending on the molar H₂:CO ratio in the reformed bio-syngas, it can be directly applied as a feedstock for the production of methanol, dimethyl ether (DME), long hydrocarbon chains via Fischer-Tropsch (FT) process [4] or NH₃ synthesis by the Haber route [5]. Steam reforming of methane (SRM) produces a hydrogen-rich synthesis gas (H₂:CO ¼ 3:1), suitable for downstream applications such as NH₃ production. In contrast, dry reforming of methane (DRM), where CO₂ replaces water, generates a syngas with an equimolar content of H₂ to CO (H₂:CO ¼ 1) appropriate for FT process. Combining the two processes allows tuning syngas combinations with H₂:CO molar ratios ranging from 1 till 3, which becomes important for methanol and DME syntheses [6,7].

As recently reviewed by Kawi et al. [8], reforming reactions involving CO₂ as a main reagent (notably DRM) are regarded as a basis for research studies aiming to upgrade the calorific value of hydrocarbons for most of the procedures centered around reforming of natural gas. Adding to these energetic advantages, dry reforming appears as the most suitable path for biogas transformation into bio-syngas because of its composition (mainly CH₄ and CO₂) that makes it an interesting feedstock for this process [9]. Therefore, the production of syngas mixtures from renewable energy resources, typically biogas, is a favorable route in order to decrease the emissions of carbon dioxide [10]. CO₂ gas, the most problematic greenhouse gas, will be consumed by the reforming reaction instead of being released to the atmosphere [11] thus, curbing the global climate change issue and providing an avenue for exploring technologies contributing to carbon cycles establishments [12].

Typically, the design of a biogas dry reforming catalyst (inlet ratio of CH₄/CO₂ greater than 1) should be based on all of the reported tactics that constitute low cost, selective and stable DRM (inlet ratio of CH₄/CO₂ ¼ 1) catalysts with an added focus on the deactivation modes that could result from excess CH₄ in the gas feed. Along with the main biogas reforming reaction, secondary reactions such as the reverse-water gas shift (RWGS), methane decomposition (MD) and Boudouard reaction (BR) could amend the overall performance of the catalyst. Actually, selectivity towards an equimolar product ratio is altered by the RWGS due to the production of excess CO leading to a decrease in the H₂:CO ratio in the product stream. Another important problem encountered in the course of biogas dry reforming is coke formation through MD and/or BR where; the former is most pronounced at high reaction temperatures (close to those required for the main DRM) whereas the latter generally occurs at lower temperatures. The development of solid C_(s) carbonaceous deposits on the inner and/or outer catalytic surfaces contribute in catalyst deactivation and plugging of the reactor [13]. Besides, due to the high endothermic character of the reforming reaction, sintering (or agglomeration) of nanoparticles and loss of active surface area is an additional drawback towards the industrialization of the dry reforming process [14].

As for typical DRM catalysts, supported catalysts containing noble metals such as Ru and Rh are active catalysts in biogas reforming reaching high CH_4 and CO_2 conversions with a stable reactivity on stream even at temperatures exceeding 640 °C [8,15,16]. However, their substitution by non-noble (i.e. Ni, Fe or Co) metals [9,17] is nowadays a popular approach from both environmental and economical perspectives. Despite their potential deactivation on stream (due to coke deposition and/or nanoparticles agglomeration), Ni-based catalysts remain the most preferred choice among the non-noble family of metals due to their good intrinsic activity levels being comparable to those of noble metals [18,19].

To increase catalytic performance and decrease carbon deposition and sintering effects on Ni-based catalysts in the course of biogas dry reforming; several parameters have been lately studied such as: addition of promoters [9,20-23], support type [24] and, alteration of synthesis techniques [10,25]. For instance, Moura-Nickel et al. [21] developed effective Ni- Y_2O_3 - Al_2O_3 catalysts for biogas dry reforming and reported performances significantly higher than those obtained on unpromoted Ni- Al_2O_3 catalyst. The high activity was attributed to a decrease in coke formation in presence of yttrium oxide by promoting a higher degree of interaction between Ni and the alumina matrix. Similarly, Charisiou et al. [22] ascribed the enhanced performance of their CeO_2 or La_2O_3 promoted Ni/ Al_2O_3 to a higher dispersion of nickel nanoparticles resulting in an enhanced metal-support interaction and thus, a higher resistance to carbon formation upon facilitating the activation of CO_2 to gasify $\text{C}_{(s)}$ deposits [26-29]. Besides alumina, mixed TiO_2 - Al_2O_3 like-materials decomposing into mixed oxides stand out as promising supports for Ni species with high activity and selectivity as compared to Ni impregnated on pure Al_2O_3 [24]. In addition to the incorporation of promoters with specific properties, some of the newest strategies for the development of stable biogas reforming catalysts involve the application of "original" synthesis approaches, such as equilibrium deposition filtration EDF, compared to traditional post-impregnation ones (wet and incipient wetness impregnations) [25]. It was shown that upon depositing Ni via the EDF method; an improved overall dispersion was achieved reflecting positively on reactivity and selectivity levels for inlet CH_4/CO_2 feed stream of 1.5 (molar composition).

Another promising approach is the confinement of well-dispersed nanoparticles within standard oxides having ordered channels for encapsulation reasons, such as porous silica [30-34] or alumina [35-39]. Such porous frameworks can not only exert a spatial restriction on Ni^0 species to hamper their sintering and coke formation but also offer a high surface area for the dispersion of these nanoparticles. Accordingly, we have developed catalytic systems based on Ni impregnated on natural macroporous diatomite silica [40] and synthesized mesoporous SBA-15 [30,31,33] as catalysts for DRM. Better performances were measured for Ni/SBA-15 compared to Ni/diatomite due to 1) an enhanced dispersion of Ni^0 nanoparticles over the mesoporous support and 2) an improved

confinement effect of Ni⁰ active phases within the well-ordered mesoporous arrangement of SBA-15. However, metal particles supported in silica-based channels could still migrate from the mesopores to the external surface at high temperatures due to weak metal-support interaction (MSI) where; sintering of nanoparticles is inevitable in these silica-based catalysts. On the contrary, ordered mesoporous alumina was shown to have a greater tendency to interact with metal particles. Nanoparticles are anchored in their frameworks with strong MSI resulting in prominent anti-sintering property especially when the catalyst is prepared following active phase introduction directly during the synthesis ("one-pot" synthesis allowing solid solution formation). Indeed, we recently designed a mesoporous Ni-containing alumina catalyst by adopting the "one-pot" technique following an evaporation-induced self-assembly (EISA) method in presence of a structuring agent [41,42]. The "one-pot" catalyst, with nickel nanoparticles highly dispersed and stabilized inside the Al₂O₃ matrix was found significantly more active and stable in combined methane reforming than impregnated catalysts [43].

More recently, testing the reactivity of transition, non Ni-based, metals specifically iron is becoming desirable due to its high availability and extremely low price that is approximately 250 times lower than that of Ni or Co [44,45]. The utilization of Fe dispersed on either ZrO₂ [46], MgAl₂O₄ [47] or Al₂O₃ [48,49] oxides have been reported for methanation reactions and exhibited promising performances. Moreover, Fe-based catalysts have been also studied for standard methane dry reforming (equimolar inlet feed) [50], reforming of ethylene [51], CO methanation [52] and, CO₂ hydrogenation [53]. The catalytic data over Fe containing catalysts were encouraging. The usage of Fe in the reforming of model biogas mixtures is still scarcely reported in literature despite their highly attractive economical advantage. Nevertheless, monometallic Fe catalysts deactivate on stream and deactivation reasons are vaguely discussed in literature. Reported data scarcely address the parameters leading to the deactivation of iron but promotes enhancement strategies that lie on coupling Fe to either noble (Ru) [49] or non-noble (mainly Ni) [46,48,50,51] metals in bimetallic catalytic systems. It is worth mentioning that all of the reported tactics involving bimetallic catalysts deal with the probable promotional effect of Fe on the other metal whereas, focusing on the enhancement of the reactivity of Fe by the secondary metal could be of great interest for the development of low-cost iron-based materials (predominately composed of Fe) for industrial applications.

Based on this state of the art, the present work aimed at developing "one-pot" synthesized ordered mesoporous Fe in Al₂O₃ catalysts for testing in dry reforming of a model biogas (CH₄/CO₂ ¼ 1.8) in order to obtain an understanding on the reactivity of Fe towards syngas production upon emphasizing on the factors that affect reactivity and selectivity levels. Despite the particular properties of ordered-structured materials and the expectation of promising performances even under

biogas dry reforming conditions [21], studies dealing with the direct preparation of such oxides housing nanoparticles in their porous walls for their application in the dry reforming of model biogas mixtures is still very limited. In addition, there exists to our knowledge no work establishing correlation between the catalytic performances, the physicochemical properties and, deactivation behaviors of "one-pot" synthesized iron in alumina under harsh biogas reforming conditions ($T \approx 700$ °C, excess CH_4 in inlet feed potentially results in heavy $\text{C}_{(s)}$ deposition). For the sake of completion, low cost Ni^{2+} salts were also introduced, based on their high reactivity levels in methane reforming reactions [16,17,49,50], in the design of "one-pot" bimetallic Fe-Ni- Al_2O_3 catalysts upon varying Fe:Ni molar content (range from 0.33 till 3). The "one-pot" synthesis method along with metal contents were chosen based on recent works [29,33,43] displaying catalysts with promising performances for dry (inlet $\text{CH}_4/\text{CO}_2 \approx 1$) and combined dry and steam (inlet $\text{CH}_4/\text{H}_2\text{O}/\text{CO}_2 \approx 1/0.8/0.4$) reforming reactions.

Experimental procedures

Preparation of mesoporous "one-pot" alumina based- materials

Monometallic mesoporous $\text{Fe}_{10\%}\text{Al}_2\text{O}_3$ and $\text{Ni}_{5\%}\text{Al}_2\text{O}_3$ (reference material) and bimetallic $\text{Fe}_x\%\text{Ni}_{(1-x)}\%\text{Al}_2\text{O}_3$ ($x \approx 2.5, 5$ or 7.5% , total metal content fixed at 10 wt%) samples were synthesized following a well-established "one-pot" EISA method [41,42] with some minor modifications [29,43]. Typically, the synthesis consisted in dissolving, at room temperature (RT), 1.0 g of P123 Pluronic triblock copolymer ($(\text{EO})_{20}(\text{PO})_{70}(\text{EO})_{20}$, $M_n \approx 5800$, Sigma Aldrich, 43546-5) in 20 ml of absolute ethanol ($\text{CH}_3\text{CH}_2\text{OH}$, Sigma Aldrich, 64-17-5) under vigorous stirring. After complete dissolution of the structuring agent, 1.6 ml nitric acid (65.0 wt% aqueous HNO_3 , Johnson Matthey S.A., extra pure) was added, still under stirring, together with A mmol of aluminium isopropoxide ($\text{Al}(\text{OPr}^i)_3$, $\text{C}_9\text{H}_{21}\text{AlO}_3$, 98%, Sigma Aldrich, 220418), B mmol of iron (III) nitrate nanohydrate ($\text{FeN}_3\text{O}_9 \cdot 9\text{H}_2\text{O}$, Sigma Aldrich, 216828) and/or C mmol of nickel nitrate hexahydrate ($\text{Ni}(\text{NO}_3)_2 \cdot 6\text{H}_2\text{O}$, Sigma Aldrich, 13478-007). All the chemicals were used as received, without further purification. For each synthesis, the total molar composition was always kept constant, equal to 10 mmol (i.e. $[A + B \text{ (or C)}] \approx 10$ mmol for $\text{Fe}_{10\%}\text{Al}_2\text{O}_3$ and $\text{Ni}_{5\%}\text{Al}_2\text{O}_3$ samples and $[A + B + C] \approx 10$ mmol for $\text{Fe}_x\%\text{Ni}_{(1-x)}\%\text{Al}_2\text{O}_3$ ones). This final mixture was covered with a polyethylene (PE) film, continuously stirred at RT for at least 7 h until complete dissolution, and finally transferred into a double-layer jacketed beaker supplied by a flow of distilled water regulated at 60 °C to undergo slow evaporation (ethanol, acid) for 48 h straight. The obtained brown (or greenish) xerogels, which color depending on Fe (or Ni) amount, were slowly calcined in air at 600 °C for 5 h (heating rate 0.5 °C min^{-1}) to give calcined "one-pot" alumina-based materials.

Characterization methods

Textural properties were determined from N₂-sorption (adsorption and desorption) isotherms recorded on an ASAP 2020 Micromeritics apparatus. Prior to measurements, calcined samples were degassed under vacuum for 3 h at 300 °C then cooled down to RT before being placed at -196 °C (liquid nitrogen temperature). The Brunauer-Emmett-Teller (BET) surface areas were calculated from the BET equation for a relative pressure (P/P₀) range between 0.05 and 0.25. The single point pore volume was calculated from the adsorption isotherm at a relative pressure of 0.990 and pore size distribution (PSD) was calculated using the Barrett-Joyner-Halenda (BJH) method for the adsorption branch of the isotherm.

Structural characteristics were studied at RT by conducting powder X-ray diffraction (XRD) at wide and small angles. The wide-angle measurements were performed on a PANalytical XPert³ diffractometer using Cu K α radiation (λ = 1.5405 nm). The acquisitions were recorded for 2 θ values between 20.0° and 90.0° at a voltage of 30 kV, a current of 10 mA and a step size of 0.04° (with 2s duration at each step). A comparison with standard powder XRD files published by the International Center for Diffraction Data (ICDD) helped in the identification of present crystalline phases. Crystalline domain sizes were estimated using the Scherrer equation. The small-angle data were obtained from 2 θ of 0.5° to 4.0° (time per step: 1 s) on a BRUKER type D8 ADVANCE diffractometer applying a Cu K α irradiation source (1.5418 nm) and operating at 40 kV and 30 mA. The observed diffraction peaks correspond to families of planes indexed by hkl values (Miller indices) where the distance d separating two parallel plans is calculated according to Bragg's law Eq. (1). These data were used to calculate the lattice parameter (a).

The reducibility of iron and nickel species in the prepared (calcined) alumina-based materials was studied by temperature programmed reduction (TPR), carried on an Autochem 2920 (Micromeritics) apparatus equipped with a thermal conductivity detector (TCD) for a constant record of the overall H₂ consumption. The powder (100 mg) was heated on a quartz wool in a U-shaped quartz sample tube from room temperature to 900 °C at a constant rate of 7 °C min⁻¹ using a gaseous mixture of 5 vol% H₂/Ar (30 ml min⁻¹). A cold trap of ice and salt bath (NaCl) was used to condense any water generated during the reduction process before the arrival of the dry gas flow to the TCD detector. This guarantees that the obtained signal (difference in thermal conductivity between reference and analysis gases) is integrally associated with H₂ consumption.

The number of surface Fe and Ni sites per unit mass of the catalyst (dispersion, D%) was determined by means of temperature programmed desorption (TPD) using the same apparatus and reactor adopted for TPR experiments. For

H₂- TPD, 300 mg of calcined powder was first *in-situ* reduced at 700 °C for 2 h (heating rate of 7 °C min⁻¹) under similar flowing medium as H₂-TPR (5 vol% H₂/Ar, 30 ml min⁻¹). Then, the reduced sample was allowed to cool to 60 °C, under the same H₂-flow, to ensure complete saturation with hydrogen. Physically adsorbed H₂ (on the material surface) was flushed by a flow of Ar (30 ml min⁻¹) for 2 h before re-heating the sample, still under Ar, to 900 °C (10 °C min⁻¹) for TPD measurements. The volume of desorbed H₂ was continuously monitored, as a function of temperature increase, by means of the TCD detector. The dispersion of Fe and Ni was calculated, based on reported literature [54,55], for an adsorption stoichiometry factor of H/Fe (or Ni) $\frac{1}{4}$ 1:1, using Eq. (3) below where: V_{ad} (ml) represents the volume of desorbed H₂ at standard temperature and pressure (STP) conditions measured during TPD procedure, M is (i) for monometallic samples the molecular weight of Fe (55.84 g mol⁻¹) or Ni (58.69 g mol⁻¹) and (ii) for bimetallic samples it is calculated with respect to the weight percent of Fe and Ni used in the preparation, SF is the stoichiometric factor (H:Fe (or Ni) taken as 1), m is the sample weight (0.3 g), P is the total weight fraction of Fe and/or Ni in the sample (5 or 10%) and V_m is the molar volume of H₂ (22.414 ml mol⁻¹) at STP.

Scanning electron microscopy (SEM) images were registered on a Hitachi SU-70 SEM-FEG microscope with a 7 kV electron acceleration tension. Transmission electron microscopy (TEM) observations were performed on ultrathin sections of solids to properly visualize the dispersed iron and nickel nanoparticles and their localization inside or outside alumina grains. The preparation of the sections was done as follows: EPON 812 embedding resin was fixed with the powder (few milligrams) and then placed in a beam capsule. The mixture is polymerized at 60 °C for 48 h straight following the cutting of the blocks into thin slices (50e70 nm in thickness). After that, the blocks were deposited on copper grids covered by an inert material (membrane of carbon). TEM images, with main axis cut parallel (longitudinal) or perpendicular (trans- versal) to the electron beam, were recorded on a JEOL-JEM 200 electron microscope operating at 200 keV (LaB₆ gun) and equipped with an energy dispersive spectroscopy (EDS) probe. The “Comptage de Particules” LRS software was used to assess average particle sizes upon considering at least 500 particles for each sample. The obtained values were compared to those estimated from XRD analyses.

Carbon deposition on spent catalysts was quantified using thermal gravimetric analysis (TGA)/differential scanning calorimetry (DSC). TGA/DSC were performed on a TA SDT Q600 thermal analyzer instrument from RT to 900 °C (heating rate of 10 °C min⁻¹) in an air flow of 50 ml min⁻¹. The qualification of carbonaceous deposits was determined via Raman spectroscopy. Spectra were collected on a KAISER (RXN1) optical system operating at a resolution of 4 cm⁻¹, 10

mW laser intensity, a total of 30 accumulations per spectrum (with 10s acquisition time). The spectrometer consists on a laser with λ 785 nm, a microscope with an X50 long working distance (W.D. λ 8.0 mm) lens along with a charge-coupled detector (CCD).

Catalytic measurements

The catalytic tests were conducted at atmospheric pressure ($P \lambda$ 1 atm) in a Microactivity Effi (PID Eng and Tech) vertical fixed-bed continuous flow stainless steel (SS310) reactor (9 mm i.d.). Prior to each reaction, 100 mg of calcined (non-diluted) powder were *in-situ* reduced at 700 °C/2 h under a flow (30 ml min⁻¹) of 5 vol% H₂/Ar. The choice of reduction temperature was based on the reducibility behavior of the samples deduced from H₂-TPR profiles along with the state of Fe and Ni species detected from wide-angle XRD patterns. The flow was then switched to the reactant mixture composed of CH₄/CO₂/Ar λ 1.8/1/14, chosen to mimic typical biogas mixtures [20e25,56,57]. Reforming reaction was carried out at 700 °C/13 h for a total gas hourly space velocity (GHSV) of 36 L g⁻¹ hr⁻¹. The reaction temperature was controlled using a thermocouple placed in the middle of the catalyst bed. Before analysis (quantification of gas concentrations), the effluent was passed through a gas/liquid separator for condensing water (potentially generated from side-reactions) prior to the arrival of reactant and product flow to the online gas chromatography. The latter Agilent 490 on-line Micro-GC apparatus was equipped with a TCD and two columns placed in parallel for detection of CH₄, H₂ and CO (molecular sieve column) and of CO₂ (plot U column). Reproducibility of the catalytic measurements has been checked. Conversions of CO₂ (XCO₂), CH₄ (XCH₄) and H₂/CO molar ratio were calculated based on Eqs. (4)e(6): cf published article. And compared to expected thermodynamic ones under the applied reaction conditions (molar ratio of reactants, diluent, temperature and pressure), using the HSC 7.1 Chemistry software (where H, S, and C stand for the enthalpy, entropy and heat capacity, respectively).

Results and Discussion

Porosity and structure of *in-situ* reduced Al₂O₃-based materials

The textural and structural properties of *in-situ* reduced materials were evaluated by N₂-sorption measurements (Fig. 1A, Table 1), small angle X-ray diffraction (Fig. 1B) and high-resolution SEM observations (Fig. 2).

Fig. 1A reveals type IV isotherms for all *in-situ* reduced samples with H₁-type hysteresis loops, suggesting the presence of uniform cylindrically shaped channels [41,42,58]. All the capillary condensation steps are steep, indicating excellent uniform mesopores among the alumina frameworks even after high-temperature

reduction. In addition, their PSD curves (inset fig.) are relatively sharp having one narrow peak present within the conventional range for uniform meso- porous materials (diameter between 8 and 13 nm, Table 1). Moreover, all Fe, Ni and Fe-Ni alumina-based samples possess relatively high specific surface areas (range $100\text{e}200\text{ m}^2\text{ g}^{-1}$, Table 1) and large pore volumes (range $0.22\text{e}0.39\text{ cm}^3\text{ g}^{-1}$, Table 1) in accordance with previous studies on similarly structured materials [52]. Compared to their calcined forms, *in-situ* reduced materials present smaller textural features (Table 1) that are attributed to thermal shrinkage and/or pore surface condensation of the Al₂O₃ matrix by dihydroxylation and/or dehydration under reduction medium [59].

It is worth noting that the textural properties, for a metal content of 10 wt%, are slightly different depending on the presence of either Fe or both Fe and Ni-nitrates in the synthesis batch. Upon increasing Fe content from 2.5 up to 7.5 wt%, the adsorption branch of the hysteresis loop gradually shifts to higher relative pressures, revealing larger pores (Table 1), the phenomenon being emphasized upon comparing monometallic Fe_{10%}Al₂O₃ (curve a, Fig. 1A) to Fe-free Ni_{5%}Al₂O₃ sample (curve e, Fig. 1A) displaying respectively the largest and smallest pores (Table 1). Such textural changes could not derive from neither calcination (in air) nor the H₂-reduction procedures since all the materials have underwent the same exact thermal treatments. Basically, this increase in pore diameter could be related to the nitrates-bearing water molecules (nanohydrate for Fe-precursor and hexahydrate for Ni precursor, mentioned in Section Preparation of mesoporous "one-pot" alumina based-materials) which can hydrolyze and produce H^b cations (via dissociation of H₂O) acidifying, therefore, the ethanol solution with successive widening of pores, as proposed in literature [58]. Such pH variations influence the balance at the organic/ inorganic interface and disturb the assembly process that contributes as well to the slight loss of surface area and pore volume seen in highly loaded Fe-samples (Fe_{10%}Al₂O₃ and Fe_{7.5%}Ni_{2.5%}Al₂O₃) compared to Fe_{5%}Ni_{5%}Al₂O₃ and Fe_{2.5%}-Ni_{7.5%}Al₂O₃ and highlighted upon comparing to Ni_{5%}Al₂O₃. Despite these minor differences between samples, their textural values are sustaining for structured materials treated at elevated temperatures (700 °C) revealing high thermal resistance and emphasizing on their potential application for the high-temperature biogas reforming reaction.

Complementary to N₂-sorption analysis, the small-angle XRD patterns of *in-situ* reduced samples (Fig. 1B) give a further evidence of the presence of ordered mesoporous structures. For all samples, there is a strong peak at circa 0.94° and a weak one at 1.4°, which can be respectively ascribed to the (100) and (110) plane reflections of a well-organized 2D hexagonal structure (p6mm symmetry) [41,42]. A slight decrease in peak intensities is observed when going from Fe_{2.5%}Ni_{7.5%}Al₂O₃Ni_{5%}Al₂O₃ (patterns d and e, Fig. 1B) to Fe_{10%}Al₂O₃ (pattern a, Fig.

1B), in direction of the improvement in the structuration degree of the alumina matrix, which is in harmony with nitrogen adsorption and desorption results.

The representative SEM images of *in-situ* reduced Fe_{10%}Al₂O₃ (Fig. 2A) and Fe_{5%}Ni_{5%}Al₂O₃ (Fig. 2B) catalysts reveal that the grains appear as a bulk mass having a smooth homogeneous external morphology, without any cracks or defects, and a noticeable (porous) periodic organization. In agreement with porosity and diffraction data, the ordered hexagonal arrangement of pores along the [001] direction displaying honeycomb structure of mesopores (Fig. 2A') and the linear porous channel along the [110] direction (Fig. 2B') are clearly detectable. Besides, there is no evidence of externally deposited iron or nickel metallic nanoparticles since there were no brilliant (light) colors on the gray alumina surface resulting from the diffusion of these higher electronic density elements. Their absence by SEM observations indicates the predominant presence of small metallic nanospecies embedded inside the alumina framework (as will be discussed in upcoming sections) and therefore, a high sintering resistance even after *in-situ* reduction at 700 °C.

Reducibility of calcined Al₂O₃-based materials

The TPR profiles of calcined mono- and bimetallic samples are presented respectively in Fig. 3A and B and overall experimental H₂-uptakes (200e900 °C range) estimated from these reduction profiles along with the relative contribution (in terms of consumed H₂) of each peak are stated in Table 2.

Fig. 3A shows that Fe and Ni species have different reducibility behaviors depending on their state of oxidation and their degree of interaction with the alumina matrix. For Fe_{10%}Al₂O₃ (curve a, Fig. 3A), there is a main reduction peak at 450 °C (accounting for 91% of the overall H₂-uptake, Table 2), that is according to literature [52,60e62], in a temperature range between the reduction of Fe₂O₃ to Fe₃O₄ occurring around 300 °C, and of Fe₃O₄ to Fe taking place at temperatures above 600 °C. The total H₂-consumption at 450 °C is around 800 mmol g⁻¹ (Table 2), being larger than the stoichiometric value (expected for an Fe content of 10 wt%) for the reduction of Fe₂O₃ to Fe₃O₄ (600 mmol g⁻¹) while much smaller than that of Fe₃O₄ to Fe (2090 mmol g⁻¹). Thus, this peak may be ascribed to the reduction of Fe₂O₃ into Fe₃O₄ where part of Fe₃O₄ could be further reduced into Fe⁰ [61,62]. This means that the Fe-species in the 700 °C *in-situ* reduced catalyst are mostly in an oxidized form rather than the Fe⁰ form. Liu et al. [52] studied the real state of the surface elements species by XPS (X-ray photoelectron spectroscopy) for similarly prepared and activated Fe-Al₂O₃ catalysts and noted complete absence of peaks corresponding to Fe⁰ species in the total Fe 2p_{3/2} XPS spectra suggesting that no metallic Fe is formed on the surface of reduced materials. This could be associated to a strong interaction with the alumina substrate, induced from the preparation

method, that stabilizes the oxide phase and suppresses its reduction to metal Fe^0 [60e62]. The absence of metallic Fe-sites, as will be confirmed by wide-angle XRD patterns (section Dispersion , size and morphological aspects of supported Fe and Ni species), will have an impact on the catalytic activity of $\text{Fe}_{10\%}\text{Al}_2\text{O}_3$ catalyst (Section Catalytic performance in biogas dry reforming of Al_2O_3 based catalysts) since metallic sites are the active sites for catalyzing reforming reactions involving activation of C-H and C-O bonds [63].

The TPR profile of calcined $\text{Ni}_{5\%}\text{Al}_2\text{O}_3$ sample shows a main reduction peak at a rather high temperature (760°C , curve e, Fig. 3A). Such type of profile, already described for "one-pot" synthesized Ni-alumina materials [29,43], is typical of the reduction of oxidized Ni strongly interacting with the support, as in spinel mixed phases, generating small, catalytically active, Ni^0 sites (Sections Catalytic performance in biogas dry reforming of Al_2O_3 based catalysts and Section Dispersion , size and morphological aspects of supported Fe and Ni species).

Conversely to monometallic samples, the TPR profiles of the bimetallic $\text{Fe}_x\text{Ni}_{(1-x)}\text{Al}_2\text{O}_3$ ones (Fig. 3B) display two main reduction peaks with recognizable H_2 -contributions (Table 2). For all these samples, the reduction peaks of both Fe (lower temperature peak, maxima in the $400\text{e}450^\circ\text{C}$ range) and Ni species (higher temperature peak, maxima in the $655\text{e}760^\circ\text{C}$ range) shift to lower temperatures compared with the corresponding peaks of $\text{Fe}_{10\%}\text{Al}_2\text{O}_3$ and $\text{Ni}_{5\%}\text{Al}_2\text{O}_3$. The integral area of the low-temperature peak increases linearly with the increase in Fe loading (or decrease in Ni loading) from 20% for $\text{Fe}_{2.5\%}\text{Ni}_{7.5\%}\text{Al}_2\text{O}_3$ to 38% for $\text{Fe}_{7.5\%}\text{Ni}_{2.5\%}\text{Al}_2\text{O}_3$ (Table 2). Even if expected, this observation emphasizes that (some) Fe-species in bimetallic materials are present in the same oxidation state as those in the single component $\text{Fe}_{10\%}\text{Al}_2\text{O}_3$ catalyst that undergo a subsequent (incomplete) reduction from Fe_2O_3 to Fe_3O_4 then to Fe^0 . Interestingly, the higher temperature reduction peak accounts for the majority of consumed H_2 (60e80%, Table 2) even for the Fe-richest $\text{Fe}_{7.5\%}\text{Ni}_{2.5\%}\text{Al}_2\text{O}_3$ sample. This indicates that in these Fe-Ni materials, the majority of species are reduced at a temperature exceeding that noted in the $\text{Fe}_{10\%}\text{Al}_2\text{O}_3$ catalyst. Therefore, the high reduction temperature peak could not be fully ascribed to the reduction of Ni with strong MSI but rather to the reduction of mixed iron-nickel spinel phases with composition depending on the content of incorporated Fe and Ni elements [64]. The shift of the high-temperature peak towards lower temperatures with increase in Ni content (peak maxima around 750°C for $\text{Fe}_{7.5\%}\text{Ni}_{2.5\%}\text{Al}_2\text{O}_3$ compared to maxima around 655°C for $\text{Fe}_{2.5\%}\text{Ni}_{7.5\%}\text{Al}_2\text{O}_3$) suggests some weakening of the Ni and Al_2O_3 interaction. This is mainly due to the presence of Fe that induces potential competition between nickel in the interaction with the alumina substrate because of the formation of iron-nickel alloys [52]. Also, an effect of accessibility of reducible species with

changes of the chemical composition could be involved especially that the total H₂-uptake was larger for Fe_{5%}Ni_{5%}Al₂O₃ as compared to Fe_{7.5%}Ni_{2.5%}Al₂O₃ and Fe_{2.5%}Ni_{7.5%}Al₂O₃ (Table 2). This ultimately suggests an enhanced dispersion of metallic species in the equimolar (molar Fe:Ni ¼ 1) composed sample (Section H₂-TPD and dispersion analysis in reduced Al₂O₃-based materials) and consequently a positive impact on catalysis (Section Catalytic performance in biogas dry reforming of Al₂O₃ based catalysts).

H₂-TPD and dispersion analysis in reduced Al₂O₃-based materials

The H₂-TPD experiments were performed over reduced catalysts to obtain information on the interaction between hydrogen molecules and metallic active sites as well as to quantitatively determine the amount of chemisorbed H₂ that will provide a good estimate of metal dispersion (D%). The related profiles for mono- and bimetallic catalysts are displayed in Fig. 3A', B' and the calculated dispersion is mentioned in Table 2.

Compared to the H₂-desorption profiles of monometallic Ni_{5%}Al₂O₃ (curve e, Fig. 3A') that of the Ni-free Fe_{10%}Al₂O₃ catalyst (profile a, Fig. 3A') displays a broad signature that accounts for a low dispersion value (Table 2) with weak desorption peaks at around 540 and 820 °C. According to literature [61,65], the former peak could be attributed to H₂-desorption from surface exposed iron oxide-derived species and the latter corresponds to a desorption from subsurface layers of iron oxides incorporated in the alumina matrix. The low intensity of these peaks indicates a negligible reactivity of reduced iron species with H₂ which in turn will influence catalytic reactivity (Section Catalytic performance in biogas dry reforming of Al₂O₃ based catalysts). A similar desorption classification could be adopted for the reduced nickel atoms in alumina with characteristic temperature ranges depending upon the type of reduced species. Over the monometallic Fe-free sample (curve e, Fig. 3A'), hydrogen atoms are being desorbed from (i) the exposed surfaces of highly dispersed Ni⁰ nanoparticles with high capacity of hydrogen dissociation at temperatures below 450 °C [54] and from (ii) the surfaces of Ni⁰ particles immersed in an alumina layer (subsurface species) at temperatures above 600 °C [66,67]. The relative surface area of the high temperature desorption peaks (maxima at 880e890 °C) is much larger than that at low temperatures (maxima around 200 °C) indicative of a population of metallic Ni species that is occluded within the alumina matrix (in the porous arrangement of the support), as will be verified on TEM images. Concerning the TPD profiles of the Fe_{x%}Ni_{(1-x)%}Al₂O₃ series of catalysts, there is a significant change of the overall desorption behavior where several additional peaks especially at low (140e350 °C range) and intermediate (520e660 °C range) temperatures are observed (Fig. 3B'). For these catalysts, the identification of

species with respect to their reactivity to H₂ is more complex than for monometallic samples. It is categorized as a function of the desorption temperature peak where:

(i) peaks with maxima at very low temperature ranges (140-300 °C) correspond to the desorption of H₂ from exposed surfaces of highly reactive Ni particles, (ii) peaks at intermediate range (300-550 °C) represent H₂ desorbed from surfaces of Ni-rich Fe-Ni alloys, (iii) peaks within the 550-660 °C range are attributed to the desorption of H₂ from Fe-rich Fe-Ni alloys and, (iv) desorbing peaks having maxima above 700 °C characterize a more difficult desorption from the surface of less-accessible (covered by alumina layers) Fe or Ni-species [60,66,67]. Indeed, for the mostly loaded Fe sample (curve b, Fig. 3B'), peaks at temperatures below 350 °C are non-visible compared to Fe_{2.5%}Ni_{7.5%}Al₂O₃ (curve d, Fig. 3B') and Fe_{5%}-Ni_{5%}Al₂O₃ (curve c, Fig. 3B') due to the low amount of highly reactive Ni species. The presence of Ni in Fe_{7.5%}Ni_{2.5%}Al₂O₃ is rather attested by the desorption of H₂ from Ni-rich alloys at 340 and 530 °C and even from the desorption from Fe-Ni alloys at 660 °C. As could be expected, the lack of Fe-rich alloys is clearly manifested for the Ni-richest Fe_{2.5%}Ni_{7.5%}Al₂O₃ catalyst (curve d, Fig. 3B') by the absence of desorption peaks between 550 and 660 °C, following a trend similar to that of monometallic Ni-based samples (curves e-f, Fig. 3A'). Remarkably, the Fe_{5%}Ni_{5%}Al₂O₃ catalyst (curve c, Fig. 3B') presents H₂-desorption peaks, with close relative surfaces, in all temperature ranges. In this equimolar Fe:Ni catalyst, several types of species with a very high dispersion (Table 2), interfere in H₂ adsorption (uptake being the highest amongst all catalysts, Table 2) and subsequent desorption. This highlights the fact that a proper amount of Fe and Ni is mandatory to generate different types of reactivity sites with improved dispersion (particularly when compared to Fe_{2.5%}Ni_{7.5%}Al₂O₃); factors being highly beneficial for enhanced catalytic performances.

Catalytic performance in biogas dry reforming of Al₂O₃- based catalysts

Prior to catalytic evaluation, calcined mesoporous materials were *in-situ* reduced at 700 °C/2 h to generate metallic sites for methane reforming. The flow was then switched to that of reactants (GHSV of 36 L g⁻¹ h⁻¹) and the catalytic measurements were performed at 700 °C for 13 h. The obtained conversion values (XCH₄, XCO₂) and product ratios (H₂:CO) are plotted as a function of time-on-stream in Fig. 4. Thermodynamic reactivity values evaluated using the HSC 7.1 Software for C_s (carbon in solid phase)-assisted and C_s-free biogas dry reforming operations are also drawn on Fig. 4 (straight and straight-lines). Both types of simulations were performed in order to account for C_s deposition that is likely to occur especially when excess CH₄ is present in the inlet feed. According to thermodynamics, a much higher CO₂ than CH₄ conversion value (difference of 43.2%) and an H₂:CO ratio

close to 1.0 is expected when C_s is not introduced as a possible product. This implies that under such conditions, the reforming reaction is highly selective towards methane dry reforming yielding an equimolar product ratio. When C_s is considered, close CO_2 and CH_4 conversion values are anticipated with an $H_2:CO$ ratio greater than 1.0 (around 2.0) suggesting the high occurrence of secondary reactions involving methane consumption and subsequent H_2 production. At high reaction temperatures of 700 °C, methane decomposition remains the most (thermodynamically) favorable carbon producing reaction responsible for conversion and selectivity variations.

Catalytic results of monometallic "one-pot" synthesized catalysts (Fig. 4A,B and C) show that Ni incorporated in mesoporous alumina (curve e) is more active than Fe (curve a), even for a metal content that is twice less ($Ni_{5\%}Al_2O_3$ compared to $Fe_{10\%}Al_2O_3$). Respective intrinsic XCH_4 and XCO_2 values over $Ni_{5\%}Al_2O_3$ are 39 and 64% compared to 12 and 29% over $Fe_{10\%}Al_2O_3$. With respect to bimetallic "one-pot" synthesized catalysts (Fig. 4A',B⁰ and C⁰), performances are found to be stable with time-on-stream with reactivity and selectivity levels differing with respect to catalyst composition. It is important to note that a substitution of only 2.5 wt% Fe by 2.5 wt% Ni is significantly capable of ameliorating the reactivity and the stability of Fe-species (curve b, Figs. A⁰, B⁰) where; more than the double in the conversion values of $Fe_{10\%}Al_2O_3$ are measured over $Fe_{7.5\%}Ni_{2.5\%}Al_2O_3$. The amelioration in reactivity levels is significantly noted when 5 wt% Fe is substituted by 5 wt% Ni (curve c, Figs. A⁰, B⁰). The $Fe_{5\%}Ni_{5\%}Al_2O_3$ catalyst recorded the highest performance of all catalysts and the closest to the maximum thermodynamically expected one (curve e, Fig. 4A and B). The co-presence of 5 wt% Ni along with 5 wt% Fe is beneficial to both CH_4 and CO_2 conversions compared to the catalyst with same Ni content but without Fe incorporation (curve e, Fig. 4A and B). The reactivity of $Fe_{5\%}Ni_{5\%}Al_2O_3$ even exceeded that of $Fe_{2.5\%}Ni_{7.5\%}Al_2O_3$ (curve d, Fig. 4 A⁰,B⁰) in spite of a higher nickel content. Moreover, it is surprising to note that the most reactive $Fe_{5\%}Ni_{5\%}Al_2O_3$ catalyst displays performances that follow the same trend (higher CO_2 than CH_4 conversions) as that predicted thermodynamically for a C_s -free simulation (Fig. 4, dashed-lines). This designates that this catalyst is operating a dry reforming reaction in absence of severe C_s deposition, as will be verified in the carbon characterization section over spent catalysts. Indeed, from a selectivity perspective (Fig. 4C,C⁰), the product ratio is close to 1.0 for $Fe_{5\%}Ni_{5\%}Al_2O_3$ (curve c, Fig. 4C') all along the 13 h of test.

Thus, the performances of our $Fe_{5\%}Ni_{5\%}Al_2O_3$ catalyst appear highly promising, and this stands also when compared to literature performances obtained by other research teams over Al_2O_3 -based catalysts, even at higher Ni loadings. By comparison, addition of 11 wt% NiO and 20 wt% CeO_2 on impregnated TiO_2 on Al_2O_3 mixed oxide [24] was found beneficial when conducting the same reaction

but under less drastic operation conditions (CH_4/CO_2 molar ratio of 1.5 compared to 1.8 used in our study). In addition, high CH_4 and CO_2 conversions were reported over a Ni (8 wt%) impregnated on combined $\text{CeO}_2\text{-Al}_2\text{O}_3$ catalyst but, isothermal stability measurements showed slight deactivation, even over the most reactive Ni/ $\text{CeO}_2\text{-Al}_2\text{O}_3$ catalyst, in spite of mild biogas reforming conditions (CH_4/CO_2 inlet ratio of 1.5) [22]. Besides, biogas reforming performances as good as ours were attained on $\text{Ni}_{8\%}/\text{Al}_2\text{O}_3$ catalyst featuring an equilibrium deposition filtration synthesis method [25], but the preparation routes were quite complex with extensive energy and time-consuming (several steps) pre- and post-synthesis catalyst treatments. Therefore, the above “one-pot” $\text{Fe}_{5\%}\text{Ni}_{5\%}\text{Al}_2\text{O}_3$ catalyst, obtained by direct (one-step) synthesis and by using a mono-metallic standard type of support (alumina), represents a highly effective candidate for biogas dry reforming, offering the advantage of avoiding the usage of post-synthesis treatments and expensive secondary metal incorporation.

The importance of incorporating Ni along with Fe for an enhanced performance of Fe species upon considering appropriate amounts of Ni to Fe is illustrated in Fig. 5. This figure shows on the same graph the levels of methane conversion (average values from stability tests) and dispersion values (calculated from TPD experiments) as a function of Fe:Ni molar content in bimetallic catalysts. The correlation combining dispersion and reactivity levels obtained by increasing Ni content from 2.5 up to 5 wt% is in fact predictable since an enrichment of Ni, with a highly maintained dispersion, generates Ni^0 sites that are more important for catalysis (than Fe sites) resulting in higher reactivity levels. An additional substitution of Fe by Ni till reaching a Fe:Ni ratio of 0.33 results in an opposite trend where; the dispersion decreases and consequently methane conversion declines (Fig. 5). Recalling TPD curves (Fig. 3B'), the reduced $\text{Fe}_{5\%}\text{Ni}_{5\%}\text{-Al}_2\text{O}_3$ catalyst retains the larger amount (than any other mono or bimetallic catalyst) of strong hydrogen-binding sites characterized by H_2 -desorption peaks with maxima in the temperature range of 140e350 °C. It has been reported that such sites of nickel species are favorable for facilitating chemisorption of hydrogen atoms generated from dissociative adsorption of hydrogen molecules [56,66,68]. Moreover, the stable adsorption of hydrogen atoms on such strong H_2 -binding sites will tentatively promote the dissociative adsorption of methane on reduced metallic Ni sites, known as the rate-determining step for reforming reactions involving methane [69]. Thus, $\text{Fe}_{5\%}\text{Ni}_{5\%}\text{Al}_2\text{O}_3$ with many strong hydrogen-binding sites shows a faster (and higher) methane adsorption capacity due to an easier accessibility of methane towards these, particularly active sites. Therefore, a stable performance of Fe species with reactivity levels higher than those achieved over Fe-free and Ni-free samples is possibly realized by combining Fe to an equimolar amount of Ni.

Dispersion, size and morphological aspects of supported Fe and Ni species

Structural information on the deposited metal species in calcined, *in-situ* reduced and spent catalysts was gained from wide-angle X-ray diffraction. The patterns are presented in Fig. 6 and the estimated particle sizes at the various successive stages of samples preparation are listed in Table 3.

With respect to structures, all calcined materials present a comparable XRD pattern (Fig. 6B) with weak broad diffraction peaks characteristic of a γ - Al_2O_3 phase (ICDD file # 10e0425) with small crystalline domains. The patterns are similar, independently on the Fe and/or Ni content. The notable absence of apparent diffraction peaks attributable to iron or nickel crystalline phases reveals an amorphous character and an extremely high dispersion of species in the mesoporous alumina skeleton. Even if their presence is not detectable in the calcined materials, it was indeed confirmed by their corresponding TPR profiles (discussed previously in Section Reducibility of calcined Al_2O_3 -based materials).

Upon heating at 700 °C in H_2 , weak peaks attributable to metallic nickel become identifiable in all Ni-containing samples (patterns b-e, Fig. 6B). The stability of the fully reduced Ni^0 with face centered cubic (FCC) unit cell (ICDD file # 65e0380) is verified even after catalytic run (patterns b-f, Fig. 6C) due to (i) the preserved reduction state of nickel nanoparticles and to (ii) the scarcely modified peak intensities of crystalline Ni^0 . Accordingly, the mean sizes of the crystalline domains estimated from peak widths are small (a slight increase is noted with the increase in Ni content independently on Fe content, Table 3) after *in-situ* reduction and their sizes remain very close to those found after catalysis. This reveals a high Ni^0 resistance to sintering owing to the special advantages of the "one-pot" preparation method. Comparable stability effects were recently claimed in the case of "one-pot" synthesized oxide-based catalysts tested in dry [36e38], steam [70] and in combined methane reforming [29,43] but such types of materials were never considered yet in biogas dry reforming operated under excess methane at a high temperature of 700 °C.

Moreover, in the XRD signatures of Ni-containing catalysts (patterns b-f, Fig. 6), additional diffraction peaks corresponding to the phase transition of the alumina skeleton from amorphous (Fig. 6A) to (at least partial) crystalline γ - Al_2O_3 are visible (Fig. 6B) resulting from the high temperature applied in the course of reduction. The crystallization phenomenon is slightly accentuated after biogas dry reforming (Fig. 6C), due to longer exposure to heating, yet no major change is apparent (particularly, thin XRD peaks demonstrating the formation of bulky crystalline phases are not noted) despite severe catalytic conditions. This is an evidence of the excellent structural resistance of the organized alumina-based networks. It is noteworthy that XRD peaks of crystalline metallic Fe^0 are not visible in neither *in-situ* reduced nor in spent Ni-free $\text{Fe}_{10\%}\text{Al}_2\text{O}_3$ catalyst (pattern a, Fig. 6B and C) where; only peaks of magnetite Fe_3O_4 oxide (FCC unit cell, ICDD file # 19e0629)

are detected. This absence of Fe^0 diffraction peaks confirms the TPR reducibility behavior of $\text{Fe}_{10\%}\text{Al}_2\text{O}_3$ (Section Reducibility of calcined Al_2O_3 -based materials) attesting on the difficult reduction of Fe_2O_3 to Fe^0 (ending at the stage of Fe_3O_4 phase) owing to strong iron-alumina interaction. Moreover, $\gamma\text{-Al}_2\text{O}_3$ peaks are also not detectable in the pattern of the Ni-free $\text{Fe}_{10\%}\text{Al}_2\text{O}_3$ catalyst even after 13 h on stream at 700°C . Observations similar to ours were already mentioned in the literature for monometallic Fe- Al_2O_3 samples [56]; yet not clearly addressed. We tentatively associate it to the formation, during synthesis, of a phase consisting of Fe_2O_3 and $\gamma\text{-Al}_2\text{O}_3$ (recently mentioned in literature in the form of amorphous $\text{Fe}_2\text{O}_3\cdot\text{Al}_2\text{O}_3$ [67]) from the incorporation of Fe ions within the alumina substrate. Under high-temperature reduction, some of the Fe_2O_3 species detach from the alumina then undergo the reduction (yet incomplete) into Fe_3O_4 whereas, the excess Fe_2O_3 remaining strongly attached to Al_2O_3 hampers the crystallization of alumina into well-defined crystalline $\gamma\text{-Al}_2\text{O}_3$, a phase clearly detected in all our Ni-containing catalysts (Fig. 6B and C). Regarding XRD patterns, an increase in Ni content causes an absence of magnetite diffraction peaks and an increase in the intensity of the $\gamma\text{-Al}_2\text{O}_3$ peaks (patterns b-f, Fig. 6B and C). This could be explained based on TPR and TPD analyses identifying the formation of Fe-Ni alloys. The co-presence of both Fe and Ni reduces the formation of free Fe_3O_4 due to the alloying of Fe with Ni and simultaneously limits the interaction of Fe with Al_2O_3 allowing, therefore, alumina to crystallize. The absence of XRD signals linked to Fe-Ni alloys over bimetallic $\text{Fe}_x\%\text{Ni}_{(1-x)}\%\text{Al}_2\text{O}_3$ catalysts is an indication of their high dispersion as was indeed verified based on dispersion results (Table 2) showing an enhancement of overall dispersion upon addition of Ni (in place of Fe) until reaching the optimum content in the equimolar $\text{Fe}_5\%\text{Ni}_5\%\text{Al}_2\text{O}_3$ catalyst.

The high stability of the alumina matrix along with the preservation of well-dispersed nanoparticles at high-temperature biogas dry reforming is also confirmed by microtome TEM images (Fig. 7). It is obvious that the ordered hexagonal arrangement of the porous network and its uniform channel system is preserved, both perpendicular to [001] (Fig. 7A,B,C) and along [110] (Fig. 7A',B',C') grain directions. The average sizes obtained from TEM observations are close to those estimated from XRD peaks (Table 3), enlightening once more on the high resistance of Ni^0 to sintering even after 13 h on stream at 700°C . The excellent thermal resistance of all spent catalysts is also attested by the persistence of small angle XRD peaks in the patterns of all spent catalysts (Fig. 8). A direct comparison between lattice parameters (Table 4) shows only slight shifts in values upon passing respectively from *in-situ* reduced to spent materials (i.e. from 11.5 \AA to 11.7 \AA for $\text{Fe}_5\%\text{Ni}_5\%\text{Al}_2\text{O}_3$). Such shift in the d spacing and subsequently in the lattice parameter to higher values (Table 4) suggests a small enlargement in the pore diameter after catalysis. This could be ascribed to an additional

crystallization of the alumina matrix, into the γ - Al_2O_3 phase (Fig. 6C), in line with longer heating treatment.

In the search of stable Fe-based catalysts, the major challenge to confront, especially when the catalyst is subjected to high-temperature treatments, is the limitation of segregation for maintaining active surface areas [57,58]. Our partially reduced (detected by XRD) yet detached from alumina Fe-O species could be subjected to such a problem. To enhance the segregation resistance, we have tried to introduce the active phase (Fe) and the structuring agent (P123 Pluronic triblock copolymer) in a same synthesis batch to provide a confinement effect. Such a preparation method was found to be a key parameter for ensuring the stability of Ni-based catalysts [29,43], a technique to our knowledge, never considered for Fe-based catalysts as an approach to limit segregation. In spite of the preservation of the porous arrangement of the alumina matrix in the spent Fe-loaded catalyst (Fig. 7A and B); the segregation of Fe_3O_4 species manifests and contributes (in part) to the deactivation of Ni-free $\text{Fe}_{10\%}\text{Al}_2\text{O}_3$ catalyst (Fig. 9A,A⁰). Iron enriched zones clearly appear on microtome images as localized dark stripes (Fig. 9A) constituted of iron aggregates embedded inside the porous network of the solid (Fig. 9A'). Such observations confirm those regarding the porous network of $\text{Fe}_{10\%}\text{Al}_2\text{O}_3$ (high resolutions images, Fig. 7A,A⁰) that appear empty of small dark dots representative of non-homogeneously distributed particles. As expected, the segregation of Ni^0 nanoparticles in spent $\text{Ni}_{5\%}\text{Al}_2\text{O}_3$ is not evident but regardless a bright homogenous morphology of the catalyst is seen instead (Fig. 7C). The analysis of the localization of species in the highly active and time-on-stream stable $\text{Fe}_{5\%}\text{Ni}_{5\%}\text{Al}_2\text{O}_3$ catalyst highlights again on the deactivation mode of Fe species that becomes limited in presence of Ni. The segregation encountered in $\text{Fe}_{10\%}\text{Al}_2\text{O}_3$ is no longer a deactivating factor when 5 wt% Fe was substituted by an equivalent Ni amount. The segregation of iron becomes limited in spent $\text{Fe}_{5\%}\text{Ni}_{5\%}\text{Al}_2\text{O}_3$ and surprisingly the shape of the (few) remaining Fe_2O_3 -based stripes is also affected (Fig. 9B). Rather than having core-full chain-like segregates as those seen in spent $\text{Fe}_{10\%}\text{Al}_2\text{O}_3$ (Fig. 9A,A'), the iron stripes in the bimetallic catalyst have hollow core chain forms resulting from less segregated free iron species that preferentially alloy with Ni when both metals are co-introduced in the same preparation batch and treated to high temperatures. Continuous work is in progress to complete these results.

Study of carbon deposition over spent biogas dry reforming Al_2O_3 -based catalysts

The spent catalysts were characterized by several techniques to notify coke deposits. Combined TGA and DSC (Fig. 10A and B) carried out in the air, between 300 °C and 900 °C, was applied to recognize the type of deposited carbonaceous

species based on their oxidation temperatures (principally sp^2 (graphene, nanotubes) and sp^3 (graphite) carbon types) [71,72].

The first significant information provided by TGA is the overall $C_{(s)}$ content over all spent catalysts that is not exceeding 10 wt% even over the most $C_{(s)}$ -loaded sample (maximum amount is 6 wt%). This is in accordance with the above-discussed reactivity data showing a selective dry reforming of methane behavior ($H_2:CO$ close to 1) over the most performing catalysts. Besides high reactivity levels, our "one-pot" synthesized mesoporous catalysts show very high carbon resistance along with high-temperature biogas dry reforming, at least as high or even better than those described in the few existing reports on actual simulated biogas reforming catalysts. Carbon content exceeded 12 wt% over a mesoporous Ni modified by tungsten $Ni_{5\%}W_{5\%}Al_2O_3$ catalyst even when operated under less drastic biogas reforming conditions (inlet molar feed CH_4/CO_2 ¼ 1:1) [73]. Similarly, for an equimolar gaseous inlet feed, carbon contents exceeded 15 wt% over spent mesoporous Ni-Fe (Co or Cu)- $CaO-ZrO_2$ catalysts [74]. For a biogas reforming operation (CH_4/CO_2 ¼ 1.5) close to that adopted in this study, a $Ni_{8\%}Al_2O_3$ catalyst prepared via standard post-impregnation over commercial alumina support displayed a 7 wt% $C_{(s)}$ content after a short exposure to reaction medium [25]. Such resistance to carbon deposition could be related to the advantages of the preparation methods enabling a high dispersion of metallic nano-particles inside the mesoporous structure of the support protecting them from heavy $C_{(s)}$ accumulation, as confirmed by XRD and TEM data. Secondly, the coke content is directly proportional to Fe content (or inversely proportional to Ni content) where the highest amount is recorded over spent $Fe_{10\%}Al_2O_3$ (curve a, Fig. 10A) and the lowest one (almost absent) over the Fe-free catalyst (curve e, Fig. 10A). This difference in the overall amount of carbonaceous deposits is dependent on the type of the site over which the dissociation of CO_2 can occur. The formation of oxygen atoms, subsequently to CO_2 activation, is a key to generate an oxidation path of $C_{(s)}$ (originating from CH_4 decomposition) into CO reducing, therefore, carbon accumulation [75]. Due to the predominance of oxide-based iron species in $Fe_{10\%}Al_2O_3$ (Fig. 6), CO_2 activation is totally inhibited (compared to a slight activation of CH_4) on the surfaces of oxide species whereas, all reactions rates (CH_4 , CO_2 and $C_{(s)}$ gasification) would be of the same order on (active) reduced Ni^0 sites. The reason why CO_2 is affected more than CH_4 could be linked to its activation that should occur over reduced metallic sites whereas CH_4 could undergo a partial activation on oxidized surfaces [76]. In view of that, a compromise between Fe and Ni contents appears essential to design a low cost and highly reactive catalyst with low carbon deposition especially that the latter effect is important from an industrial point of view since carbon deposition is known to potentially lead to reactors blockage with time.

Concerning DSC profiles (Fig. 10B), the peaks disclose two main types of coke-derived species described as (i) weakly stable amorphous Ca (sp^2 C-atoms, graphene-like species, peak 300e450 °C) and (ii) Cb (C-nanotubes, peak 450e550 °C) [72]. The absence of exothermic peaks with maxima above 550 °C dictates that no carbon in these samples is present in the form of crystalline Cg graphite, known to be the most harmful to catalytic stability due to encapsulation of active metallic sites [71]. DSC peaks are almost absent over spent $Ni_{5\%}Al_2O_3$ (curve e, Fig. 10B), in accordance with their very small $C_{(s)}$ content. For spent monometallic $Fe_{10\%}Al_2O_3$ catalyst, the single DSC peak at 415 °C corresponds to a population of carbonaceous graphene deposits with a sponge-like morphology, shown on SEM images in Fig. 11A,A⁰, and the two peaks over spent bimetallic catalysts reveal the co-existence of both sp^2 C-atoms and C-nanotubes. Indeed, on the SEM images of spent $Fe_{5\%}Ni_{5\%}Al_2O_3$ (Fig. 11B,B'), small C-like sponges domains and short-carbon filaments are clearly identified on the external surface of the alumina-based grains, some grains appearing more covered than others. Particularly, the DSC peaks of Ni-rich $Fe_{2.5\%}Ni_{7.5\%}Al_2O_3$ are centered above

500 °C (curve d, Fig. 10B) being close to those of Fe-rich $Fe_{10\%}Al_2O_3$ and $Ni_{2.5\%}Fe_{7.5\%}Al_2O_3$ (curves a-b, Fig. 10B) rather than those noted for the oxidation of carbon from $Ni_{5\%}Al_2O_3$ catalysts taking place at around 300 °C (curve e, Fig. 10B). This is most probably due to some hindrance in the accessibility to active Ni^0 sites potentially caused by some (unfavorable) iron deposition over nickel during preparation and thermal activation. The majority of carbon originating from CH_4 decomposition over accessible Fe-sites retards the maximum of the dynamic oxidation process to higher temperatures. This could also provide an explanation for the decrease in reactivity levels and dispersion values (D%) noted upon comparing $Fe_{2.5\%}Ni_{7.5\%}Al_2O_3$ to optimally composed bimetallic $Fe_{5\%}Ni_{5\%}Al_2O_3$ catalyst (Fig. 5). Even if they exist in trivial amounts, the coke deposits over Ni-free and bimetallic spent catalysts are only present as non-deactivating graphene and some nanotubes are shown on external surfaces of alumina grains (Fig. 11).

The amorphous state of carbon deposits in spent catalysts is also confirmed by Raman spectroscopy. Signals were only obtained for the spent $C_{(s)}$ richest $Fe_{10\%}Al_2O_3$ and bimetallic $Fe_x\%Ni_{(1-x)\%}Al_2O_3$ catalysts, where spent $Ni_{5\%}Al_2O_3$ catalysts with lower amounts of $C_{(s)}$ deposition have a widely exposed (poorly covered by carbon) alumina surface which causes, during Raman experimentation, a strong fluorescence background that hampers correct data detection [77]. The main bands in the spectra (Fig. 12) are characteristic of C atoms in sp^2 carbon networks with high degree of order (graphitic carbon, G-band, 1601 cm^{-1}) and of a disordered structural mode of carbon species (D-band, 1312 cm^{-1}) [77e79]. The signal strength of the D-band compared to the G-band (intensity ratio: I_D/I_G) is an indicator of the crystalline degree and/ or presence of defects in the carbon species,

the smaller the ratio (less than 1), the higher the degree of structural ordering [77,79]. The ratio higher than unity for all $\text{Fe}_{10\%}\text{Al}_2\text{O}_3$ and $\text{Fe}_x\text{Ni}_{(1-x)}\text{Al}_2\text{O}_3$ spent catalysts (range from 1.33 to 1.21 passing from patterns a till d, Fig. 12) coordinates with the assumption of the disordered character of the carbon deposits rather than well-ordered crystalline graphitic. Finally, the absence of XRD signal attributable to graphitic deposits (expected around $2\theta \sim 29^\circ$), even for $\text{C}_{(s)}$ richest $\text{Fe}_{10\%}\text{Al}_2\text{O}_3$ (pattern a, Fig. 6C) concludes on the negligible content of crystalline carbon deduced from TGA/DSC and Raman data.

Conclusions

The aim of this work was to evaluate and enhance the performance of cost-efficient iron based-catalysts in dry reforming of a model biogas mixture (CH_4/CO_2 ¼ 1.8) via simple approaches without adopting extensive preparation routes or applying noble metals. Fe, Ni and Fe-Ni in alumina catalysts were designed following a straightforward "one-pot" evaporation-induced self-assembly method in presence of both structuring agent and active phase. After preparation of samples and *in-situ* H_2 -reduction, all the solids presented 2D hexagonal arrangement of pores and a successful incorporation of metals within the structured alumina matrix. Ni nanoparticles showed more reactive performances towards biogas reforming than Fe at 700°C for 13 h on stream. Respective CH_4 and CO_2 conversions over $\text{Ni}_{5\%}\text{Al}_2\text{O}_3$ were 4 and 2.3 times higher than those recorded over monometallic $\text{Fe}_{10\%}\text{Al}_2\text{O}_3$. The deactivation of the latter (Ni-free) catalyst attributed to a strong interaction of iron with alumina that lead to an incomplete reduction into metallic Fe^0 (preferred phase for catalysis) but rather to Fe_3O_4 oxides that tend to segregate, under high temperature effects, into poorly dispersed iron-like strips inducing losses in the total active surface area. A partial substitution of Fe by Ni yielded bimetallic catalysts, specifically $\text{Fe}_{5\%}\text{Ni}_{5\%}\text{Al}_2\text{O}_3$, having improved dispersion and catalytic performance compared to monometallic Fe - and Ni Al O . Indeed, a 10% increase in CH_4 conversion and a 20% increase in CO_2 conversion were obtained over the optimum bimetallic $\text{Fe}_{5\%}\text{Ni}_{5\%}\text{Al}_2\text{O}_3$ catalyst compared to Fe-free $\text{Ni}_{5\%}\text{Al}_2\text{O}_3$. The formation of Fe-Ni alloys in the bimetallic, $\text{Fe}_{5\%}\text{Ni}_{5\%}\text{Al}_2\text{O}_3$, catalyst acted as barriers towards the segregation of Fe species where the majority of nanoparticles remained confined within the pores of the support after 13 h of testing. The stabilization of iron species by Ni together with the beneficial effect of confinement in the structured alumina support are found to be key factors in protecting against segregation and coking due to steric constraints. In light of their textural, structural and catalytic performances, "one-pot" mesoporous Fe, modified by Ni catalysts, represent good candidates for catalyzing syngas for diverse simulated biogas mixtures.

Acknowledgments

The authors are sincerely grateful to the ERANET EU-FP7 initiative, the national ANR (France) and CNRS-L (Lebanon) agencies for their financial support through the SOL-CARE (Energy-065, 2016e2019) project (JC-ENERGY-2014 first call). The authors would like to thank Ms. Sandra Casale for SEM and TEM observations and Dr. Jean-Marc Kraftt for his help in setting Raman instrumentation. The authors are appreciative to Pr. Nasser Hoteit and Dr. Hassan Hamieh (Lebanese Petroleum Administration, Lebanon) for fruitful scientific discussions.

References

- [1] Pakhare D, Spivey J. A review of dry (CO₂) reforming of methane over noble metal catalysts. *Chem Soc Rev* 2014;43:7813e37.
- [2] Gao Y, Jiang J, Meng Y, Yan F, Aihemaiti A. A review of recent developments in hydrogen production via biogas dry reforming. *Energy Convers Manag* 2018;171:133e55.
- [3] Liu JL, Li XS, Zhu X, Li K, Shi C, Zhu AM. Renewable and high- concentration syngas production from oxidative reforming of simulated biogas with low energy cost in a plasma shade. *Chem Eng J* 2013;234:240e6.
- [4] Kim HY, Park JN, Henkelman G, Kim JM. Design of a highly nano-dispersed Pd-MgO/SiO₂ composite catalyst with multifunctional activity for CH₄ reforming. *ChemSusChem* 2012;5:1474e81.
- [5] Erisman JW, Sutton MA, Galloway J, Klimont Z, Winiwarter W. How a century of ammonia synthesis changed the world? *Nat Geosci* 2008;1:636e9.
- [6] Olah GA, Prakash GS, Goeppert A, Czaun M, Mathew T. Self- sufficient and exclusive oxygenation of methane and its source materials with oxygen to methanol via metgas using oxidative bi-reforming. *J Am Chem Soc* 2013;135:10030e1.
- [7] Olah GA, Goeppert A, Prakash GKS. *Beyond oil and gas: the methanol economy 2011*, John Wiley and Sons.
- [8] Kawi S, Kathiraser Y, Ni J, Oemar U, Li Z, Saw ET. Progress in synthesis of highly active and stable nickel-based catalysts for carbon dioxide reforming of methane. *ChemSusChem* 2015;8:3556e75.
- [9] Goula MA, Charisiou ND, Siakavelas G, Tzounis L, Tsiaoussis I, Panagiotopoulou P, Yentekakis IV. Syngas production via the biogas dry reforming reaction over Ni supported on zirconia modified with CeO₂ or La₂O₃ catalysts. *Int J Hydrogen Energy* 2017;42:13724e40.
- [10] Habibi N, Wang Y, Arandiyani H, Rezaei M. Effect of substitution by Ni in MgAl₂O₄ spinel for biogas dry reforming. *Int J Hydrogen Energy* 2017;42:24159e68.
- [11] Cruz PL, Navas-Anguita Z, Iribarren D, Dufour J. Exergy analysis of hydrogen production via biogas dry reforming. *Int J Hydrogen Energy* 2018;43:11688e95.
- [12] Aresta M, Dibenedetto A, Angelini A. The changing paradigm in CO₂ utilization. *J CO₂ Utiliz* 2013;3:65e73.

- [13] Li D, Nakagawa Y, Tomishige K. Methane reforming to synthesis gas over Ni catalysts modified with noble metals. *Appl Catal Gen* 2011;408:1e24.
- [14] Pakhare D, Schwartz V, Abdelsayed V, Haynes D, Shekhawat D, Puston J, Spivey J. Kinetic and mechanistic study of dry (CO₂) reforming of methane over Rh-substituted La₂Zr₂O₇ pyrochlores. *J Catal* 2014;316:78e92.
- [15] Moral A, Reyero I, Alfaro C, Bimbela F, Gandía LM. Syngas production by means of biogas catalytic partial oxidation and dry reforming using Rh-based catalysts. *Catal Today* 2018;299:280e8.
- [16] Benito M, Ortiz I, Rodríguez L, Muñoz G. Ni-Co bimetallic catalyst for hydrogen production in sewage treatment plants: biogas reforming and tars removal. *Int J Hydrogen Energy* 2015;40:14456e68.
- [17] Arbag H, Yasyerli S, Yasyerli N, Dogu G, Dogu T. Enhancement of catalytic performance of Ni based mesoporous alumina by Co incorporation in conversion of biogas to synthesis gas. *Appl Catal Env* 2016;198:254e65.
- [18] Rostrupnielsen JR, Hansen JHBJ. CO₂-reforming of methane over transition metals. *J Catal* 1993;144:38e48.
- [19] Mesrar F, Kacimi M, Liotta LF, Puleo F, Ziyad M. Syngas production from dry reforming of methane over Ni/perlite catalysts: effect of zirconia and ceria impregnation. *Int J Hydrogen Energy* 2018;42:17142e55.
- [20] Charisiou ND, Siakavelas G, Tzounis L, Sebastian V, Monzon A, Baker MA, Goula MA. An in depth investigation of deactivation through carbon formation during the biogas dry reforming reaction for Ni supported on modified with CeO₂ and La₂O₃ zirconia catalysts. *Int J Hydrogen Energy* 2018;43:18955e76.
- [21] Moura-Nickel CD, Costa RL, Ferreira SRS, Moreiza RDFPM, José HJ. Ni-Y₂O₃-Al₂O₃ aerogel catalysts with high coke deposition resistance for syngas production by biogas reforming. *Int J Hydrogen Energy* 2019;44:11861e71.
- [22] Charisiou ND, Siakavelas G, Papageridis KN, Baklavaridis A, Tzounis L, Avraam DG, Goula MA. Syngas production via the biogas dry reforming reaction over nickel supported on modified with CeO₂ and/or La₂O₃ alumina catalysts. *J Nat Gas Chem* 2016;31:164e83.
- [23] Le Sache E, Santos JL, Smith TJ, Centeno MA, Arellano- Garcia H, Odriozola JA, Reina TR. Multicomponent Ni-CeO₂ nanocatalysts for syngas production from CO₂/CH₄ mixtures. *J CO₂ Utiliz* 2018;25:68e78.
- [24] Rosha P, Mohapatra SK, Mahla SK, Dhir A. Biogas reforming for hydrogen enrichment by ceria decorated over nickel catalyst supported on titania and alumina. *Int J Hydrogen Energy* 2018;43:21246e55.
- [25] Goula MA, Charisiou ND, Papageridis KN, Delimitis A, Pachatouridou E, Iliopoulou EF. Nickel on alumina catalysts for the production of hydrogen rich mixtures via the biogas dry reforming reaction: influence of the synthesis method. *Int J Hydrogen Energy* 2015;40:9183e200.

- [26] Djaidja A, Libs S, Kiennemann A, Barama A. Characterization and activity in dry reforming of methane on NiMg/Al and Ni/ MgO catalysts. *Catal Today* 2006;113:194e200.
- [27] Eltejaei H, Bozorgzadeh HR, Towfighi J, Omidkhah MR, Rezaei M, Zanganeh R, Zamaniyan A, Ghalam AZ. Methane dry reforming on Ni/Ce_{0.75}Zr_{0.25}O₂-MgAl₂O₄ and Ni/Ce_{0.75}Zr_{0.25}O₂-g-alumina: effects of support composition and water addition. *Int J Hydrogen Energy* 2012;37:4107e18.
- [28] Mondal KC, Choudhary VR, Joshi UA. CO₂ reforming of methane to syngas over highly active and stable supported CoO_x (accompanied with MgO, ZrO₂ or CeO₂) catalysts. *Appl Catal Gen* 2007;316:47e52.
- [29] Jabbour K, Massiani P, Davidson A, Casale S, El Hassan N. Ordered mesoporous “one-pot” synthesized Ni-Mg (Ca)-Al₂O₃ as effective and remarkably stable catalysts for combined steam and dry reforming of methane (CSDRM). *Appl Catal Env* 2017;201:527e42.
- [30] Kaydouh MN, El Hassan N, Davidson A, Casale S, El Zakhem H, Massiani P. Highly active and stable Ni/SBA-15 catalysts prepared by a “two solvents” method for dry reforming of methane. *Microporous Mesoporous Mater* 2016;220:99e109.
- [31] Kaydouh MN, El Hassan N, Davidson A, Casale S, El Zakhem H, Massiani P. Effect of the order of Ni and Ce addition in SBA-15 on the activity in dry reforming of methane. *C R Chim* 2015;18:293e301.
- [32] Daoura O, Kaydouh MN, El-Hassan N, Massiani P, Launay F, Boutros M. Mesocellular silica foam-based Ni catalysts for dry reforming of CH₄ (by CO₂). *J CO₂ Utiliz* 2018;24:112e9.
- [33] Karam L, Casale S, El Zakhem H, El Hassan N. Tuning the properties of nickel nanoparticles inside SBA-15 mesopores for enhanced stability in methane reforming. *J CO₂ Utiliz* 2017;17:119e24.
- [34] Zhang S, Muratsugu S, Ishiguro N, Tada M. Ceria-doped Ni/ SBA-16 catalysts for dry reforming of methane. *ACS Catal* 2013;3:1855e64.
- [35] Xu L, Zhao H, Song H, Chou L. Ordered mesoporous alumina supported nickel based catalysts for carbon dioxide reforming of methane. *Int J Hydrogen Energy* 2012;37:7497e511.
- [36] Tao K, Shi L, Ma Q, Zeng C, Kong C, Wu M, Chen L, Zhou S, Hu Y, Tsubaki N. Methane reforming with carbon dioxide over mesoporous nickel-alumina composite catalyst. *Chem Eng J* 2013;221:25e31.
- [37] Wang N, Xu Z, Deng J, Shen K, Yu X, Qian W, Chu W, Wei F. One-pot synthesis of ordered mesoporous NiCeAl oxide catalysts and a study of their performance in methane dry reforming. *ChemCatChem* 2014;6:1470e80.
- [38] Fang X, Peng C, Peng H, Liu W, Xu X, Wang X, Li C, Zhou W. Methane dry reforming over coke-resistant mesoporous Ni- Al₂O₃ catalysts prepared by evaporation-induced self- assembly method. *ChemCatChem* 2015;7:3753e62.

- [39] Xu L, Song H, Chou L. Carbon dioxide reforming of methane over ordered mesoporous NiO-Al₂O₃ composite oxides. *Catal Sci Technol* 2011;1:1032e42.
- [40] Jabbour K, El Hassan N, Davidson A, Massiani P, Casale S. Characterizations and performances of Ni/diatomite catalysts for dry reforming of methane. *Chem Eng J* 2015;264:351e8.
- [41] Morris SM, Fulvio PF, Jaroniec MM. Ordered mesoporous alumina-supported metal oxides. *J Am Chem Soc* 2008;130:15210e6.
- [42] Yuan Q, Yin AX, Luo C, Sun LD, Zhang YW, Duan WT, Liu HC, Yan CH. Facile synthesis for ordered mesoporous γ -aluminas with high thermal stability. *J Am Chem Soc* 2008;130:3465e72.
- [43] Jabbour K, El Hassan N, Davidson A, Casale S, Massiani P. Factors affecting the long-term stability of mesoporous nickel-based catalysts in combined steam and dry reforming of methane. *Catal Sci Technol* 2016;6:4616e31.
- [44] Andersson MP, Bligaard T, Kustov A, Larsen KE, Greeley J, Johannessen T, Christensen CH, Nørskov JK. Toward computational screening in heterogeneous catalysis: pareto- optimal methanation catalysts. *J Catal* 2006;239:501e6.
- [45] Ober JA. Mineral commodity summaries 2016. Reston, VA: U.S. Geological survey; 2016.
- [46] Ren J, Qin X, Yang JZ, Qin ZF, Guo HL, Lin JY, Li Z. Methanation of carbon dioxide over Ni-M/ZrO₂ (M¼ Fe, Co, Cu) catalysts: effect of addition of a second metal. *Fuel Process Technol* 2015;137:204e11.
- [47] Kustov AL, Frey AM, Larsen KE, Johannessen T, Nørskov JK, Christensen CH. CO methanation over supported bimetallic Ni-Fe catalysts: from computational studies towards catalyst optimization. *Appl Catal Gen* 2007;320:98e104.
- [48] Tian D, Liu Z, Li D, Shi H, Pan W, Cheng Y. Bimetallic Ni-Fe total-methanation catalyst for the production of substitute natural gas under high pressure. *Fuel* 2013;104:224e9.
- [49] Hwang S, Lee J, Hong UG, Baik JH, Koh DJ, Lim H, Song IK. Methanation of carbon dioxide over mesoporous Ni-Fe-Ru- Al₂O₃ xerogel catalysts: effect of ruthenium content. *J Ind Eng Chem* 2013;19:698e703.
- [50] Theofanidis SA, Batchu R, Galvita VV, Poelman H, Marin GB. Carbon gasification from Fe-Ni catalysts after methane dry reforming. *Appl Catal Env* 2016;185:42e55.
- [51] Theofanidis SA, Galvita VV, Sabbe M, Poelman H, Detavernier C, Marin GB. Controlling the stability of a Fe-Ni reforming catalyst: structural organization of the active components. *Appl Catal Env* 2017;209:405e16.
- [52] Liu Q, Qiao Y, Tian Y, Gu F, Zhong Z, Su F. Ordered mesoporous Ni-Fe-Al catalysts for CO methanation with enhanced activity and resistance to deactivation. *Ind Eng Chem Res* 2017;56:9809e20.
- [53] Sattawong R, Koizumi N, Song C, Prasassarakich P. Comparative study on CO₂ hydrogenation to higher hydrocarbons over Fe-based bimetallic catalysts. *Top Catal* 2014;57:588e94.

- [54] Liu Q, Gao J, Zhang M, Li H, Gu F, Xu G, Zhong Z, Su F. Highly active and stable Ni/g- Al_2O_3 catalysts selectively deposited with CeO_2 for CO methanation. *RSC Adv* 2014;4:16094e103.
- [55] Liu Q, Gao J, Gu F, Lu X, Liu Y, Li H, Zhong Z, Liu B, Xu G, Su F. One-pot synthesis of ordered mesoporous Ni-V-Al catalysts for CO methanation. *J Catal* 2015;326:127e38.
- [56] Phromprasit J, Powell J, Wongsakulphasatch S, Kiatkittipong W, Bumroongsakulsawat P, Assabumrungrat. H_2 production from sorption enhanced steam reforming of biogas using multifunctional catalysts of Ni over Zr-, Ce- and La-modified CaO sorbents. *S. Chem Eng J* 2017;313:1415e25.
- [57] Izquierdo U, Barrio VL, Requies J, Cambra JF, Güemez MB, Arias PL. Tri-reforming: a new biogas process for synthesis gas and hydrogen production. *Int J Hydrogen Energy* 2013;38:7623e31.
- [58] Cai W, Yu J, Anand C, Vinu A, Jaroniec MM. Facile synthesis of ordered mesoporous alumina and alumina-supported metal oxides with tailored adsorption and framework properties. *Chem Mater* 2011;23:1147e57.
- [59] Chen SY, Tang CY, Lee JF, Jang LY, Tatsumi T, Cheng SJ. Effect of calcination on the structure and catalytic activities of titanium incorporated SBA-15. *J Mater Chem* 2011;21:2255e65.
- [60] Wan HJ, Wu BS, Zhang CH, Xiang HW, Li YW, Xu BF, Yi F. Study on Fe- Al_2O_3 interaction over precipitated iron catalyst for Fischer-Tropsch synthesis. *Catal Commun* 2007;8:1538e45.
- [61] Zhou L, Enakonda LR, Saih Y, Loptain S, Gary D, Del-Gallo P, Basset JM. Catalytic methane decomposition over Fe- Al_2O_3 . *ChemSusChem* 2016;9:1243e8.
- [62] Pineau A, Kanari N, Gaballah I. Kinetics of reduction of iron oxides by H_2 : part I: low temperature reduction of hematite. *Thermochim Acta* 2006;447:89e100.
- [63] Wei J, Iglesia E. Mechanism and site requirements for activation and chemical conversion of methane on supported Pt clusters and turnover rate comparisons among noble metals. *J Phys Chem B* 2004;108:4094e103.
- [64] Ren SB, Qin JH, Wang CY, Xu BL, Fan YN, Chen Y. Influence of nickel salt precursors on the hydrogenation activity of Ni/g- Al_2O_3 catalyst. *Chin J Catal* 2007;28:651e6.
- [65] Wan HJ, Wu BS, An X, Li TZ, Tao ZC, Xiang HW, Li YW. Effect of Al_2O_3 binder on the precipitated iron-based catalysts for Fischer-Tropsch synthesis. *J Nat Gas Chem* 2007;16:130e8.
- [66] Velu S, Gangwal SK. Synthesis of alumina supported nickel nanoparticle catalysts and evaluation of nickel metal dispersions by temperature programmed desorption. *Solid State Ionics* 2006;177:803e11.
- [67] Bang Y, Park S, Han SJ, Yoo J, Song JH, Choi JH, Kang KH, Song IK. Hydrogen production by steam reforming of liquefied natural gas (LNG) over mesoporous Ni/ Al_2O_3 catalyst prepared by an EDTA-assisted impregnation method. *Appl Catal Env* 2016;180:179e88.

- [68] Bang Y, Han SJ, Yoo J, Choi JH, Lee JK, Song JH, Lee J, Song IK. Hydrogen production by steam reforming of simulated liquefied natural gas (LNG) over nickel catalyst supported on mesoporous phosphorus-modified alumina xerogel. *Appl Catal Env* 2014;148:269e80.
- [69] Trimm DL. The steam reforming of natural gas: problems and some solutions. *Stud Surf Sci Catal* 1987;36:39e50.
- [70] Shen W, Komatsubara K, Hagiya T, Yoshida A, Naito S. Steam reforming of methane over ordered mesoporous Ni- Mg-Al oxides. *Chem Commun (J Chem Soc Sect D)* 2009;42:6490e2.
- [71] Luo JZ, Yu ZL, Ng CF, Au CT. CO₂/CH₄ reforming over Ni- La₂O₃/5A: an investigation on carbon deposition and reaction steps. *J Catal* 2000;194:198e210.
- [72] Guo J, Lou H, Zheng XM. The deposition of coke from methane on a Ni/MgAl₂O₄ catalyst. *Carbon* 2007;45:1314e21.
- [73] Arbag H, Yasyerli S, Yasyerli N, Dogu G, Dogu T, Osojnik Crnivec IG, Pintar A. Coke minimization during conversion of biogas to syngas by bimetallic tungsten-nickel incorporated mesoporous alumina synthesized by the one-pot route. *Ind Eng Chem Res* 2015;54:2290e301.
- [74] Wang C, Zhang Y, Wang Y, Zhao Y. Comparative studies of non-noble metal modified mesoporous M-Ni-CaO-ZrO₂ (M¼ Fe, Co, Cu) catalysts for simulated biogas dry reforming. *Chin J Chem Eng* 2017;35:113e20.
- [75] Nguyen TH, Lamacz A, Krzton A, Liszka B, Djęga- Mariadassou G. Partial oxidation of methane over Ni⁰/La₂O₃ bifunctional catalyst III. Steady state activity of methane total oxidation, dry reforming, steam reforming and partial oxidation. Sequences of elementary steps. *Appl Catal Env* 2016;182:385e91.
- [76] Shamsi A. Carbon formation on Ni-MgO catalyst during reaction of methane in the presence of CO₂ and CO. *Appl Catal Gen* 2004;277:23e30.
- [77] Chen CY, Li HX, Davis ME. Studies on mesoporous materials:
I. synthesis and characterization of MCM-41. *Microporous Mater* 1993;2:17e26.
- [78] Liu D, Quek XY, Cheo WNE, Lau R, Borgna A, Yang Y. MCM-41 supported nickel-based bimetallic catalysts with superior stability during carbon dioxide reforming of methane: effect of strong metal-support interaction. *J Catal* 2009;266:380e90.
- [79] Che M, Vedrine JC. Characterization of solid materials and heterogeneous catalysts. Wiley-VCH; 2012. p. 64e7.

Tables

Table 1: Textural properties of calcined and in situ reduced samples

Samples	Metal weight %	BET surface area (m ² g ⁻¹)		Pore volume (m ³ g ⁻¹)		Average pore diameter (nm) ^c	
		calc. ^a	red. ^b	calc. ^a	red. ^b	calc. ^a	red. ^b
Fe10%Al ₂ O ₃	10.0 Fe	166	99	0.33	0.22	9.9 ± 6	12.8 ± 7
Fe7.5%Ni2.5%Al ₂ O ₃	7.5 Fe, 2.5 Ni	172	107	0.38	0.23	9.2 ± 5	11.1 ± 6
Fe ₅ %Ni ₅ %Al ₂ O ₃	5.0 Fe, 5.0 Ni	198	138	0.40	0.31	9.2 ± 5	9.4 ± 5
Fe2.5%Ni7.5%Al ₂ O ₃	2.5 Fe, 7.5 Ni	244	164	0.47	0.39	9.0 ± 4	8.4 ± 5
Ni ₅ %Al ₂ O ₃	5.0 Ni	185	121	0.37	0.27	9.5 ± 6	9.6 ± 5

a Textural values of synthesized (calcined) samples (600 o C/5 h).

b Textural values of calcined samples after *in-situ* H₂-reduction (700 o C/2 h).

c Average pore diameter ± standard deviation from the maxima.

Table 2: H₂-chemisorption properties of calcined samples.

Samples	H ₂ -TPR analysis			H ₂ -TPD analysis Dispersion (D%) ^c
	Peak temp. (o C)	Relative contribution (%) ^a	Total H ₂ -uptake (mmol g ⁻¹) ^b	

Fe _{10%} Al ₂ O ₃	4 50	91	80 4	5.2
	7 74	9		
Fe _{7.5%} Ni _{2.5%} Al ₂ O ₃	4 50	38	99 5	18.1
	7 50	62		
Fe _{5%} Ni _{5%} Al ₂ O ₃	4 30	30	11 36	17.4
	7 10	70		
Fe _{2.5%} Ni _{7.5%} Al ₂ O ₃	4 00	20	95 1	10.8
	6 55	80		
Ni _{5%} Al ₂ O ₃	7 60	100	82 8	17.0
a H ₂ -uptake associated to each peak relatively to the overall H ₂ -uptake after complete reduction. b H ₂ -uptake determined experimentally from TPR profiles after complete reduction at T ¼ 900 o C. c Ni dispersion calculated based on H ₂ -TPD results.				

Table 3: Average particle size of nickel species in *in-situ* reduced (700 ° C/2 h, H₂/Ar) and spent (700 ° C/13 h, CH₄/CO₂/Ar ¼ 1.8/1/14, P ¼ 1 atm, GHSV ¼ 36 L g⁻¹ h⁻¹) catalysts.

Samples	Reduced, Ø Ni ⁰ (nm)		Spent, Ø Ni ⁰ (nm)
	XRD ^a	XRD ^a	TEM
Fe _{10%} Al ₂ O ₃	e	e	e
Fe _{7.5%} Ni _{2.5%} Al ₂ O ₃	e	3.2	e
Fe _{5%} Ni _{5%} Al ₂ O ₃	4.5	4.7	5.4
Fe _{2.5%} Ni _{7.5%} Al ₂ O ₃	5.0	5.0	e
Ni _{5%} Al ₂ O ₃	3.4	3.5	3.2

a Calculated using Scherrer's equation at 2θ ¼ 51.8o for the

cat

Figures

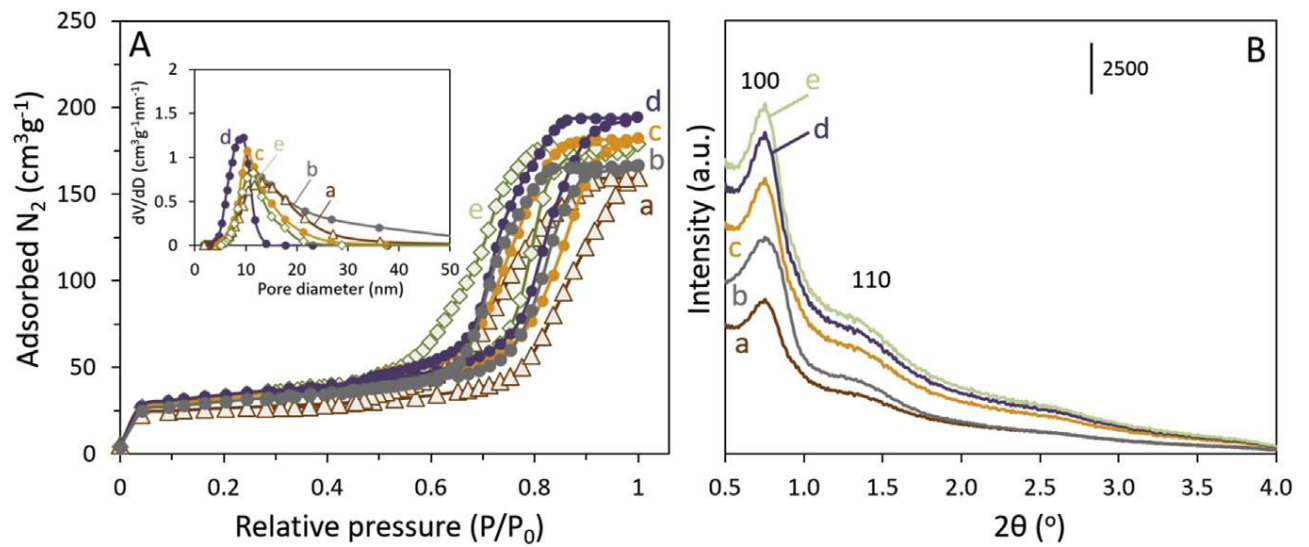


Fig. 1: (A) N₂ adsorption-desorption isotherms along with pore size distributions (insets) and (B) small angle XRD patterns of *in-situ* reduced (700 °C/2 h, H₂/Ar) materials: (a) Fe_{10%}Al₂O₃, (b) Fe_{7.5%}Ni_{2.5%}Al₂O₃, (c) Fe_{5%}Ni_{5%}Al₂O₃, (d) Fe_{2.5%}Ni_{7.5%}Al₂O₃ and (e) Ni_{5%}Al₂O₃. For XRD patterns, an offset was applied along the Y-axis for the sake of clarity.

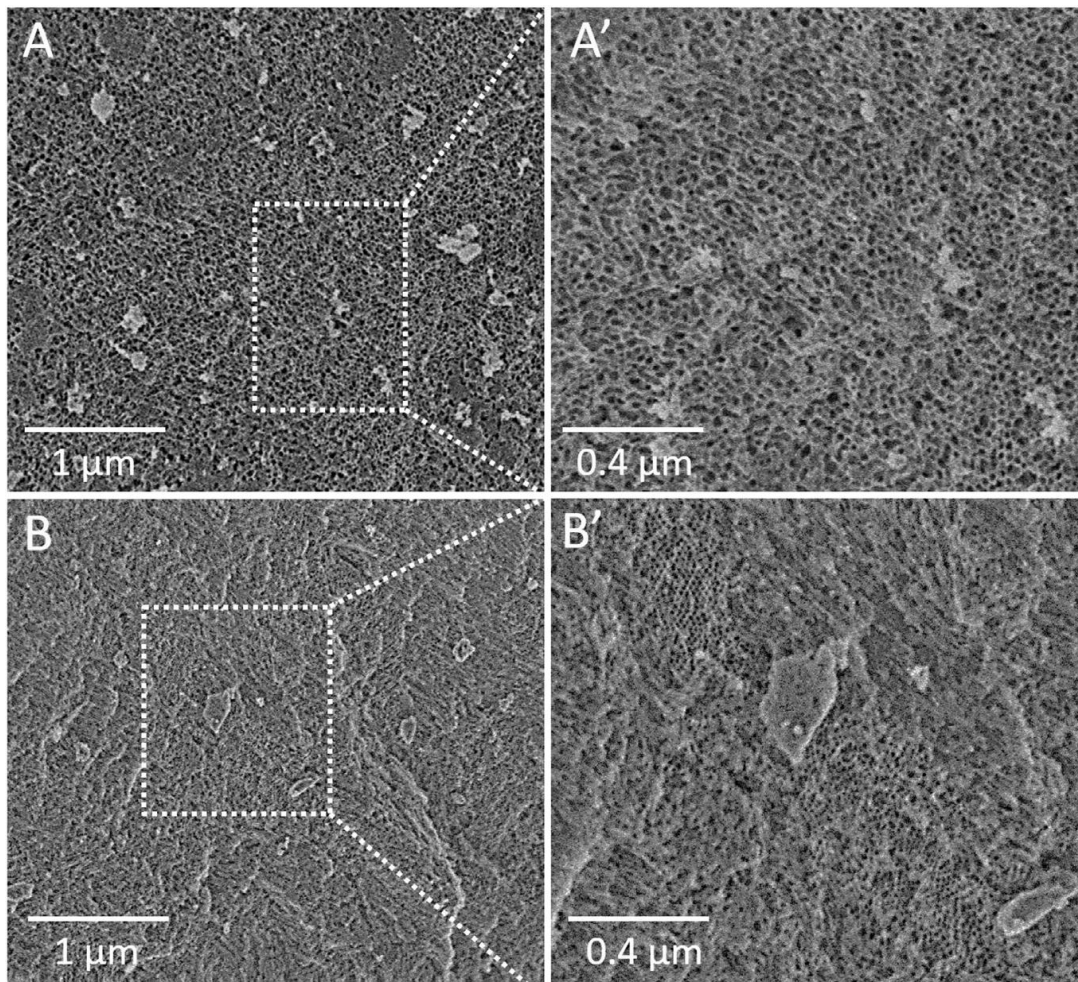


Fig. 2: SEM micrographs of *in-situ* reduced (700 °C/2 h, H_2/Ar) (A-A') $\text{Fe}_{10\%}\text{Al}_2\text{O}_3$ and (B-B') $\text{Fe}_{5\%}\text{Ni}_{5\%}\text{Al}_2\text{O}_3$ materials.

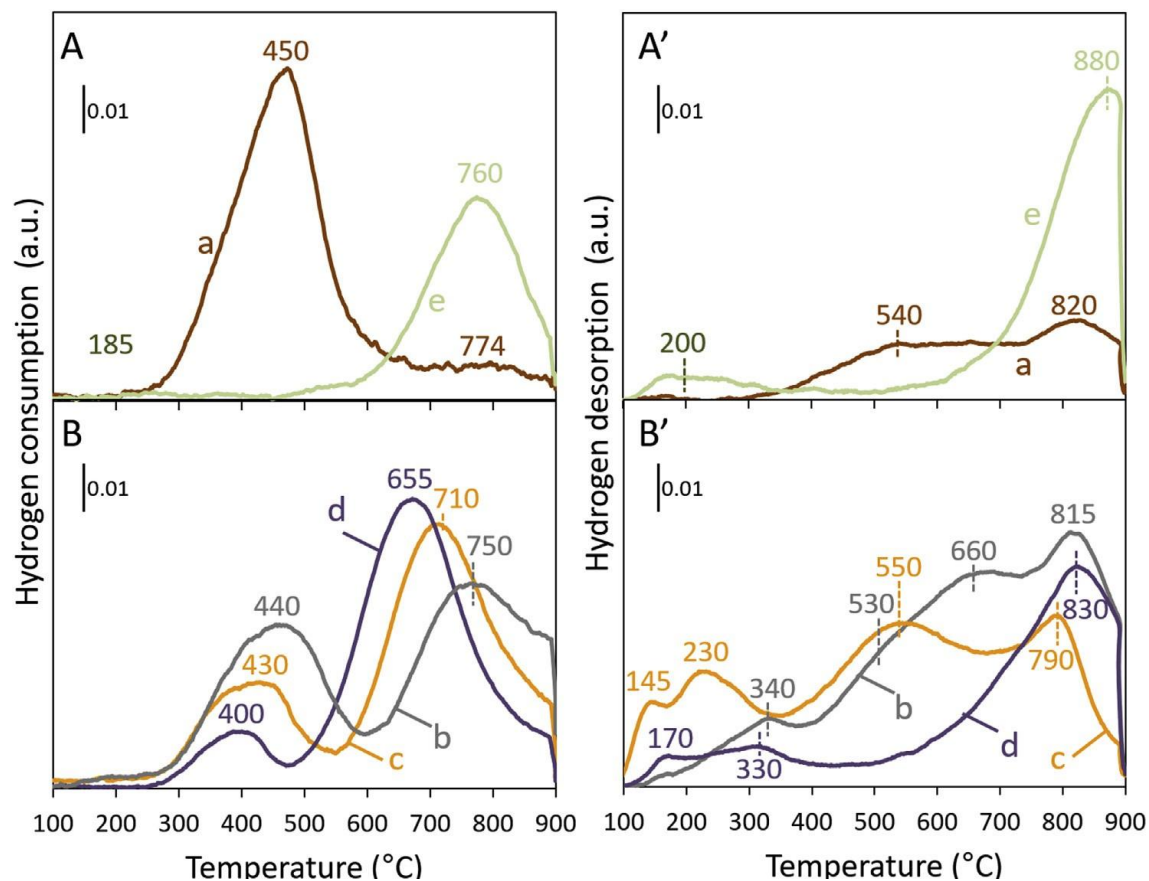


Fig. 3: (A,B) H₂-TPR and (A',B') H₂-TPD profiles of alumina based-materials: (a) Fe_{10%}Al₂O₃, (b) Fe_{7.5%}Ni_{2.5%}Al₂O₃, (c) Fe_{5%}Ni_{5%}Al₂O₃, (d) Fe_{2.5%}Ni_{7.5%}Al₂O₃ and (e) Ni_{5%}Al₂O₃.

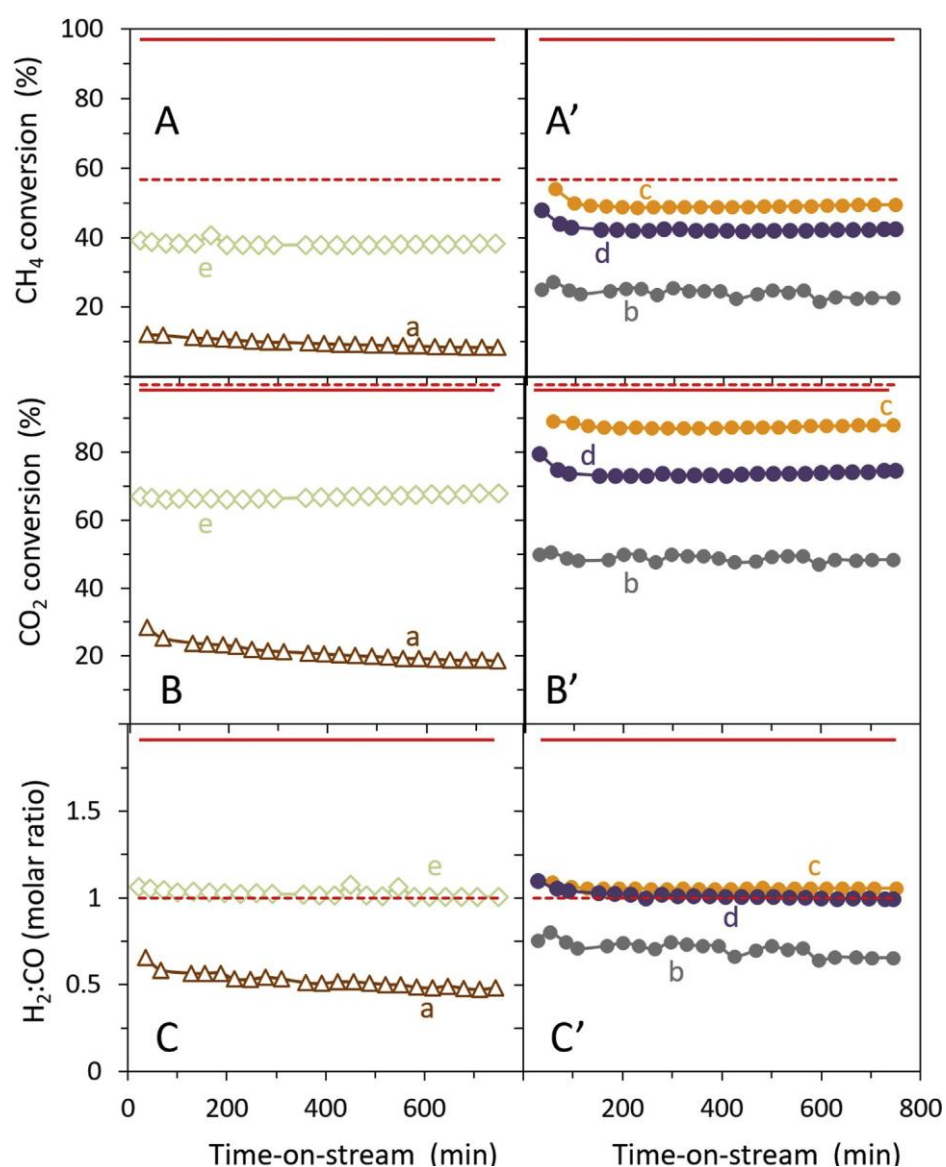


Fig. 4: (A,A') CH₄ conversions, (B,B') CO₂ conversions and (C,C') H₂:CO molar product ratios during biogas^{cat} dry reforming (700 °C/13 h, CH₄/CO₂/Ar ¼ 1.8/1/14, P ¼ 1 atm, GHSV ¼ 36 L g⁻¹ hr⁻¹) as a function of time-on-stream over: (a) Fe_{10%}Al₂O₃, (b) Fe_{7.5%}Ni_{2.5%}Al₂O₃, (c) Fe_{5%}Ni_{5%}Al₂O₃, (d) Fe_{2.5%}Ni_{7.5%}Al₂O₃ and (e) Ni_{5%}Al₂O₃. Straight-lines and dashed-lines are thermodynamic values calculated respectively, with the HSC 7.1 Chemistry software, for C_s-assisted and C_s-free operations.

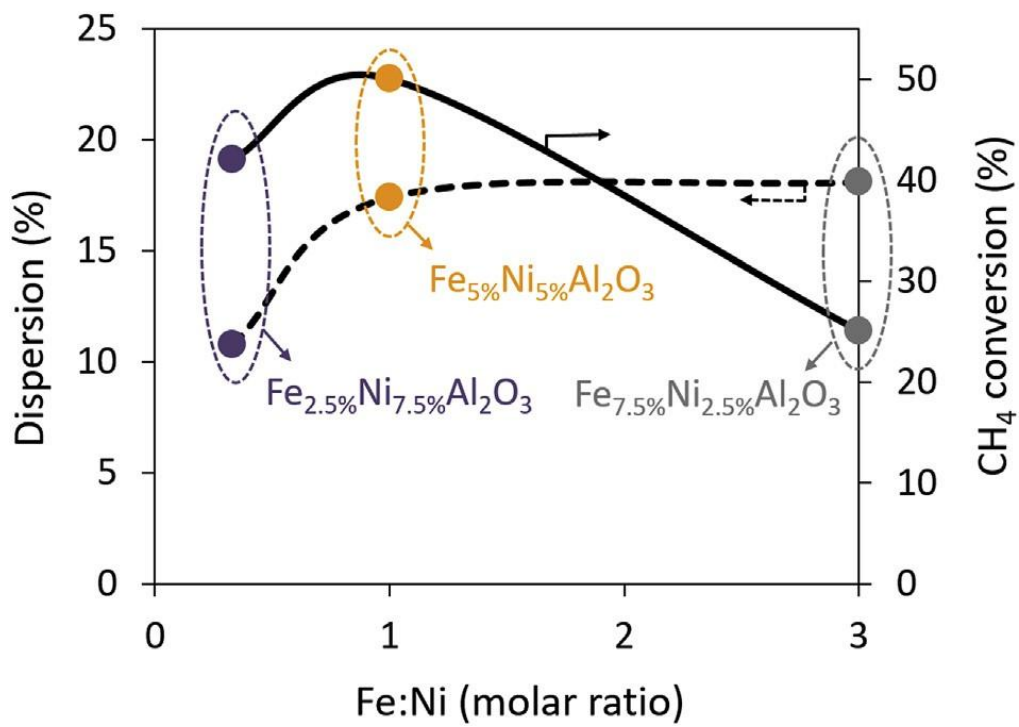


Fig. 5: Correlation between metal dispersion and reactivity levels (mean methane conversion) as a function of the molar Ni:Fe ratio introduced during preparation of bimetallic Fe-Ni mesoporous samples.

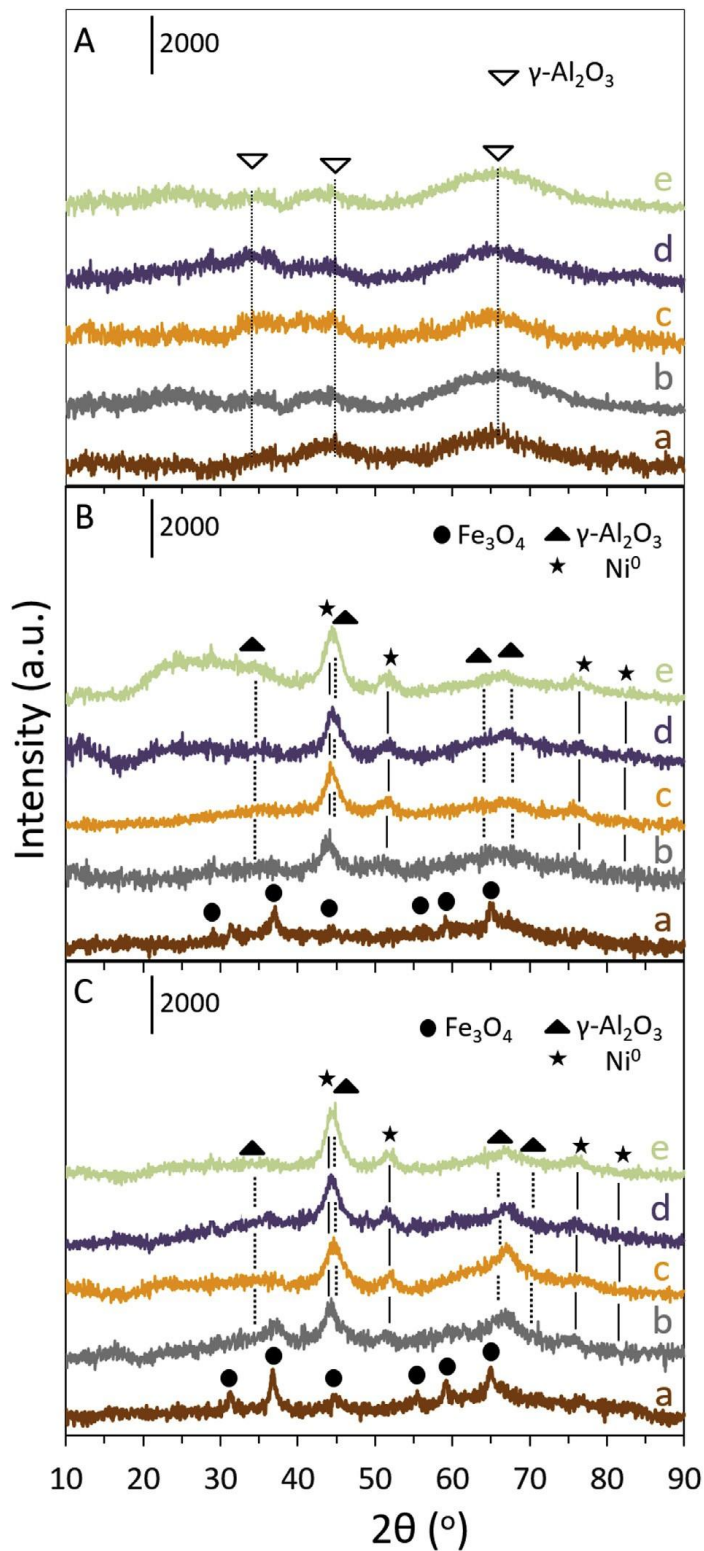


Fig. 6 : XRD patterns of (A) calcined (B) *in-situ* reduced (700 ° C/2 h, H_2/Ar) and (C) spent (700 ° C/13 h, $\text{CH}_4/\text{CO}_2/\text{Ar}$ $\frac{1}{4}$ 1.8/1/14, P $\frac{1}{4}$ 1 atm, GHSV $\frac{1}{4}$ 36 $\text{L g}^{-1} \text{hr}^{-1}$) catalysts: (a) $\text{Fe}_{10\%}\text{Al}_2\text{O}_3$, (b) $\text{Fe}_{7.5\%}\text{Ni}_{2.5\%}\text{Al}_2\text{O}_3$, (c) $\text{Fe}_{5\%}\text{Ni}_{5\%}\text{Al}_2\text{O}_3$, (d) $\text{Fe}_{2.5\%}\text{Ni}_{7.5\%}\text{Al}_2\text{O}_3$ and (e) $\text{Ni}_{5\%}\text{Al}_2\text{O}_3$.

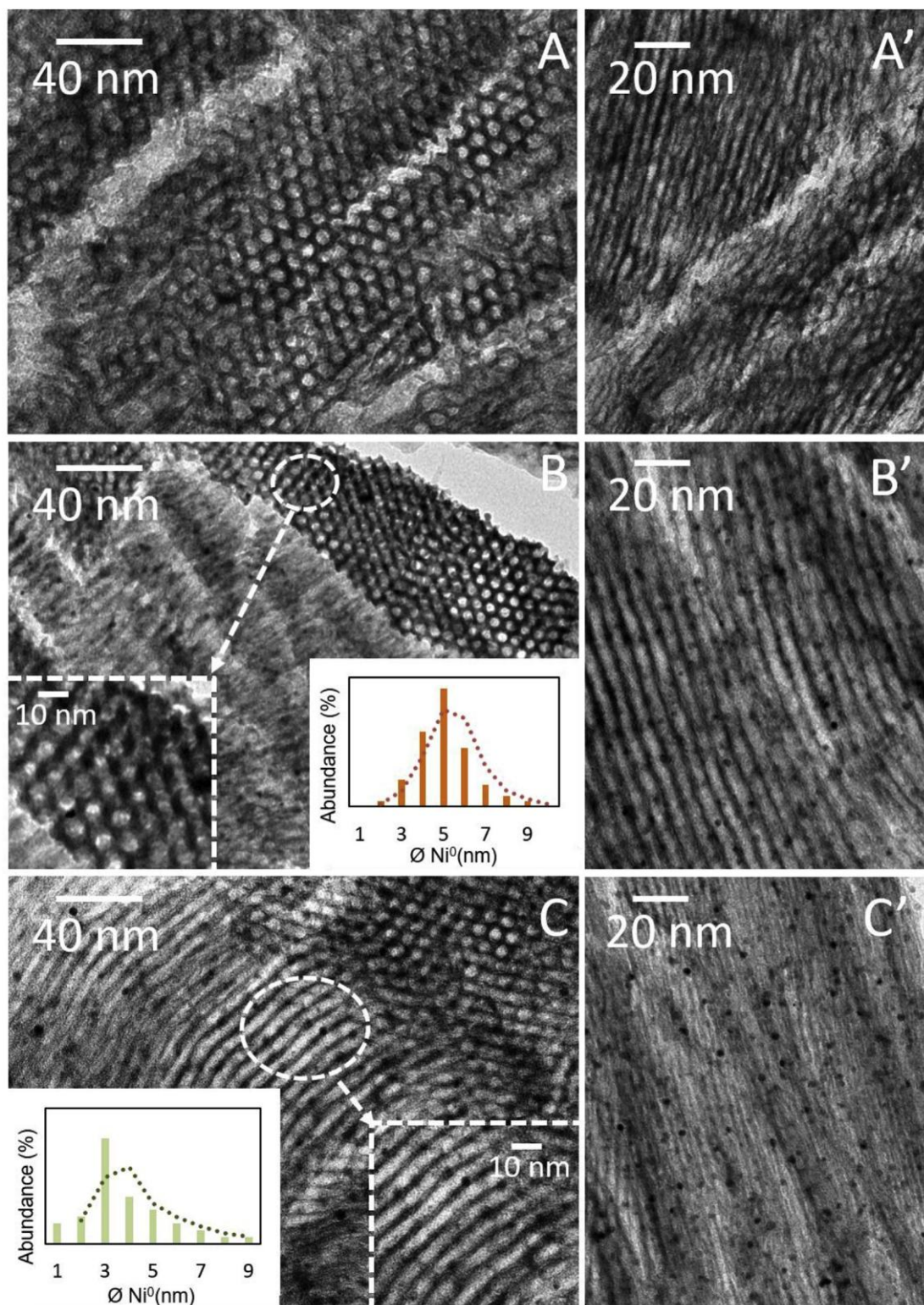


Fig. 7: TEM micrographs of spent (700 °C/13 h, CH₄/CO₂/Ar $\frac{1}{4}$ 1.8/1/14, P $\frac{1}{4}$ 1 atm, GHSV $\frac{1}{4}$ 36 L g⁻¹ hr⁻¹) (A-A') Fe_{10%}Al₂O₃, (B-B') Fe_{5%}Ni_{5%}Al₂O₃ and (C-C') Ni_{5%}Al₂O₃ catalysts. Insets in Figs. B and C show zooms on the specified grain zones.

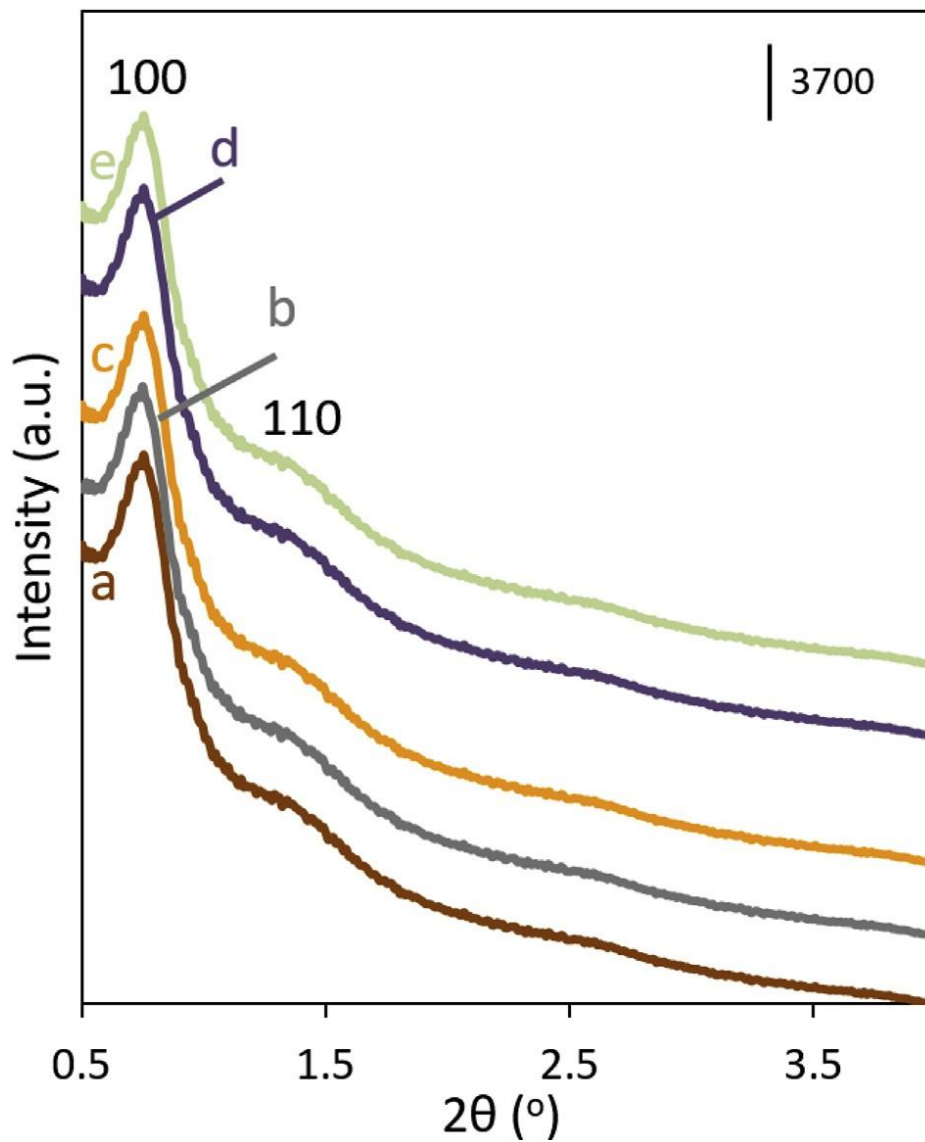


Fig. 8 : Small angle XRD patterns of spent (700 °C/13 h, CH₄/CO₂/Ar ¼ 1.8/1/14, P ¼ 1 atm, GHSV ¼_{at} 36 L g⁻¹ hr⁻¹) catalysts: (a) Fe_{10%}Al₂O₃, (b) Fe_{7.5%}Ni_{2.5%}Al₂O₃, (c) Fe_{5%}Ni_{5%}Al₂O₃, (d) Fe_{2.5%}Ni_{7.5%}Al₂O₃ and (e) Ni_{5%}Al₂O₃. An offset was applied along the Y-axis for the sake of clarity.

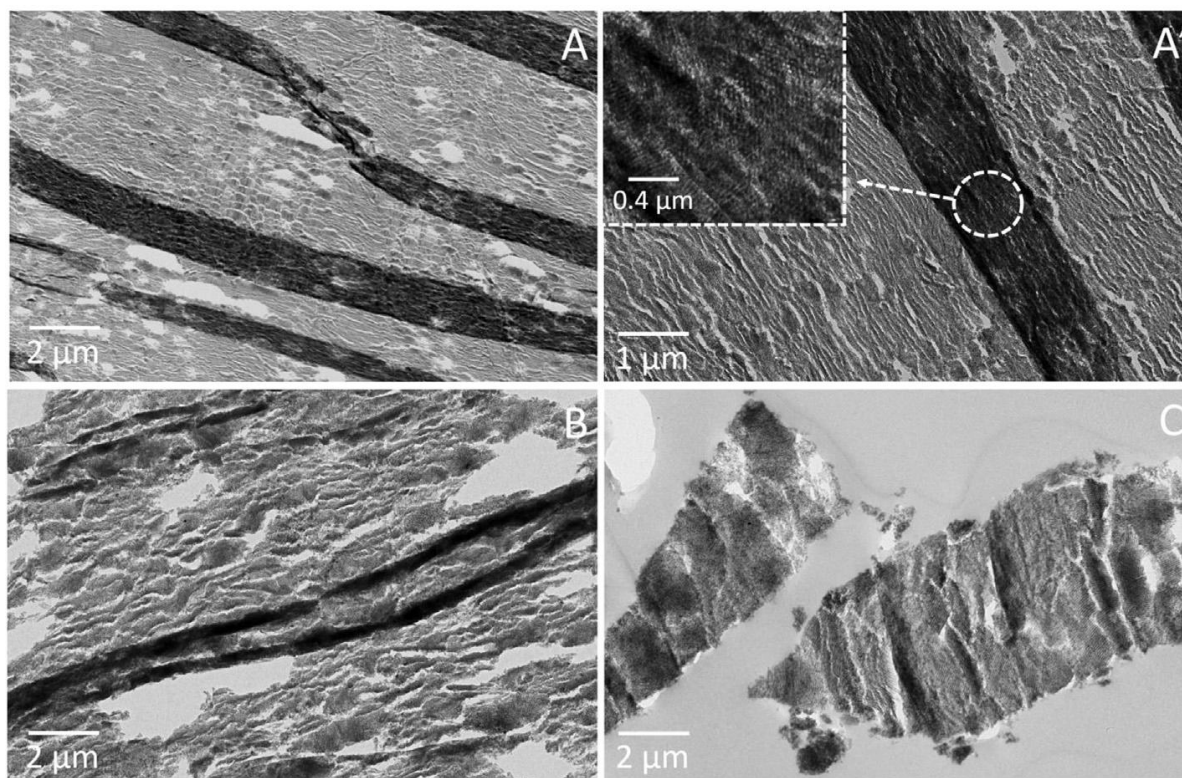


Fig. 9: TEM micrographs of spent ($700^{\circ}\text{C}/13\text{ h}$, $\text{CH}_4/\text{CO}_2/\text{Ar} \frac{1}{4} 1.8/1/14$, $P \frac{1}{4} 1\text{ atm}$, $\text{GHSV} \frac{1}{4} 36\text{ L g}^{-1}\text{ hr}^{-1}$) (A-A') $\text{Fe}_{10\%}\text{Al}_2\text{O}_3$, (B) $\text{Fe}_{5\%}\text{Ni}_{5\%}\text{Al}_2\text{O}_3$ and (C) $\text{Ni}_{5\%}\text{Al}_2\text{O}_3$ catalysts. Inset in Fig. A' shows zoom on the specified grain zone.

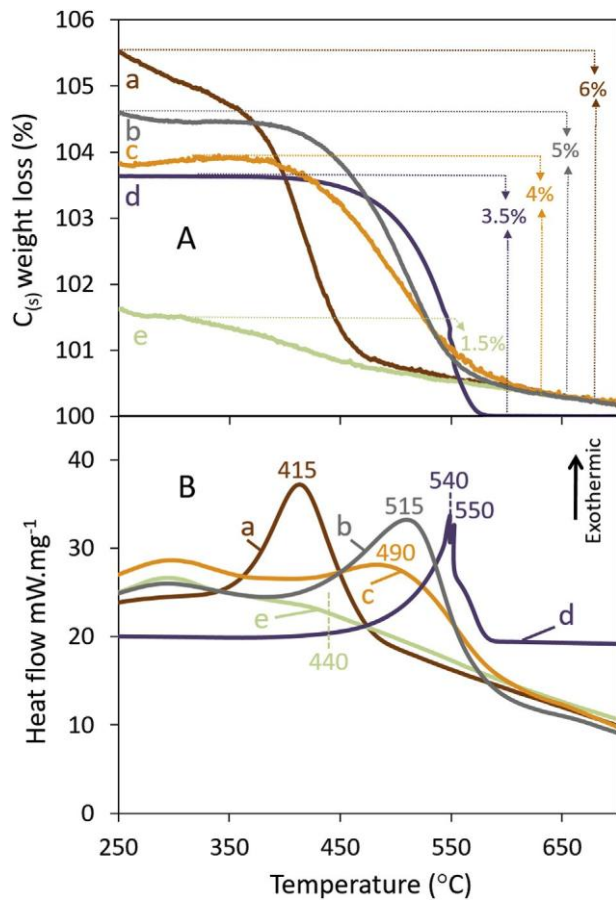


Fig. 10: (A) TGA and (B) DSC profiles of spent (700 °C/13 h, CH₄/CO₂/Ar ¼ 1.8/1/14, P ¼ 1 atm, GHSV ¼ 36 L g⁻¹ hr⁻¹) catalysts: (a) Fe_{10%}Al₂O₃, (b) Fe_{7.5%}Ni_{2.5%}Al₂O₃, (c) Fe_{5%}Ni_{5%}Al₂O₃, (d) Fe_{2.5%}Ni_{7.5%}Al₂O₃ and (e) Ni_{5%}Al₂O₃ Fig. 10 e (A) TGA and (B) DSC profiles of spent (700 °C/13 h, CH₄/CO₂/Ar ¼ 1.8/1/14, P ¼ 1 atm, GHSV ¼ 36 L g⁻¹ hr⁻¹) catalysts: (a) Fe_{10%}Al₂O₃, (b) Fe_{7.5%}Ni_{2.5%}Al₂O₃, (c) Fe_{5%}Ni_{5%}Al₂O₃, (d)

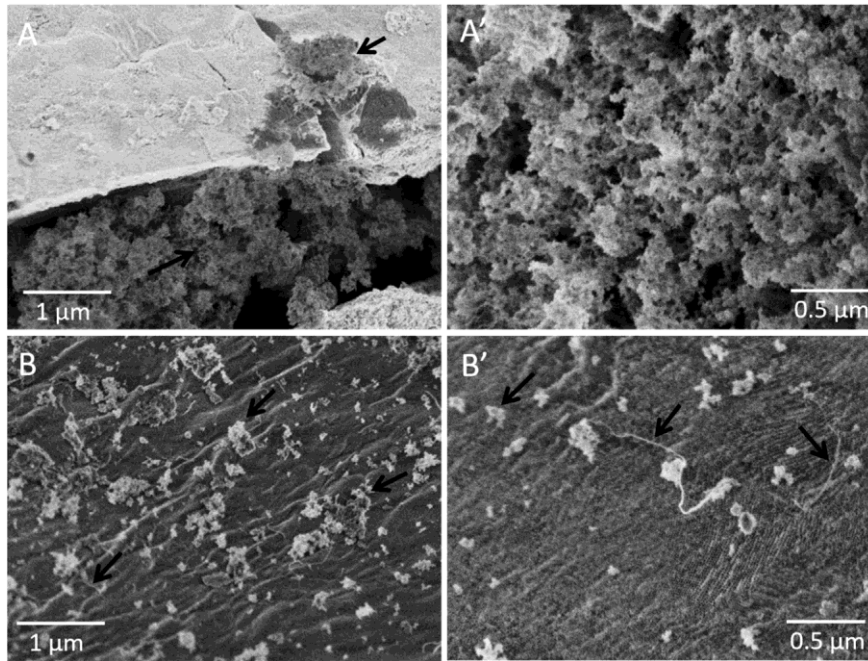
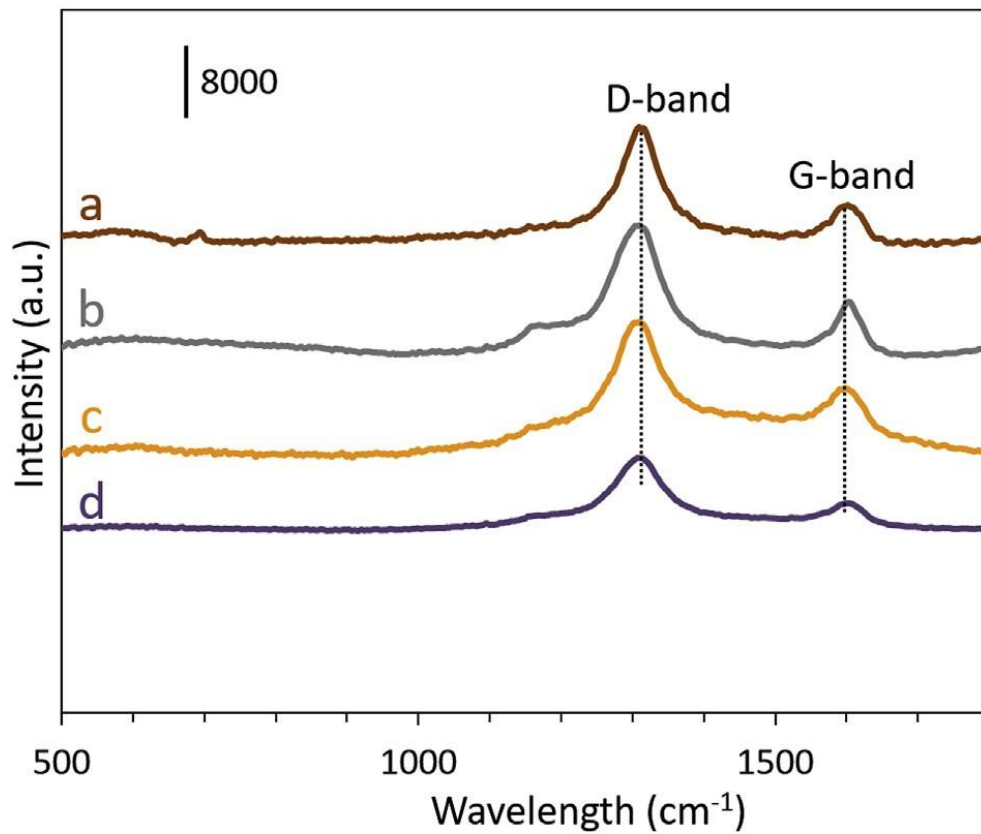


Fig. 11: SEM micrographs of spent ($700^{\circ}\text{C}/13\text{ h}$, $\text{CH}_4/\text{CO}_2/\text{Ar} \frac{1}{4} 1.8/1/14$, $\text{P} \frac{1}{4} 1\text{ atm}$, $\text{GHSV} \frac{1}{4} 36\text{ L g}^{-1}\text{ hr}^{-1}$) (A-A') $\text{Fe}_{10\%}\text{Al}_2\text{O}_3$ and (B-B') $\text{Fe}_{5\%}\text{Ni}_{5\%}\text{Al}_2\text{O}_3$ catalysts. Some carbon deposits are marked with arrows.



cat

Fig. 12: Raman spectra and of spent (700 ° C/13 h, CH₄/CO₂/ Ar ¼ 1.8/1/14, P ¼ 1 atm, GHSV ¼ 36 L g⁻¹ hr⁻¹) catalysts: (a) Fe_{10%}Al₂O₃, (b) Fe_{7.5%}Ni_{2.5%}Al₂O₃, (c) Fe_{5%}Ni_{5%}Al₂O₃, (d) Fe_{2.5%}Ni_{7.5%}Al₂O₃ and (e) Ni_{5%}Al₂O₃. An offset was applied along the Y-axis for the sake of clarity.