



HAL
open science

Core Scientific Dataset Model: A lightweight and portable model and file format for multi-dimensional scientific data

Deepansh Srivastava, Thomas Vosegaard, Dominique Massiot, Philip Grandinetti

► To cite this version:

Deepansh Srivastava, Thomas Vosegaard, Dominique Massiot, Philip Grandinetti. Core Scientific Dataset Model: A lightweight and portable model and file format for multi-dimensional scientific data. PLoS ONE, 2020, 15, pp.e0225953. 10.1371/journal.pone.0225953 . hal-02413965v1

HAL Id: hal-02413965

<https://hal.science/hal-02413965v1>

Submitted on 16 Dec 2019 (v1), last revised 23 Sep 2020 (v2)

HAL is a multi-disciplinary open access archive for the deposit and dissemination of scientific research documents, whether they are published or not. The documents may come from teaching and research institutions in France or abroad, or from public or private research centers.

L'archive ouverte pluridisciplinaire **HAL**, est destinée au dépôt et à la diffusion de documents scientifiques de niveau recherche, publiés ou non, émanant des établissements d'enseignement et de recherche français ou étrangers, des laboratoires publics ou privés.

Core Scientific Dataset Model: A lightweight and portable model and file format for multi-dimensional scientific data

Deepansh J. Srivastava¹, Thomas Vosegaard², Dominique Massiot³, Philip J. Grandinetti^{1*},

1 Department of Chemistry, Ohio State University, 100 West 18th Avenue, Columbus, OH 43210, USA

2 Laboratory for Biomolecular NMR Spectroscopy, Department of Molecular and Structural Biology, University of Aarhus, DK-8000 Aarhus C, Denmark

3 CEMHTI UPR3079 CNRS, Univ. Orléans, F-45071 Orléans, France

* grandinetti.1@osu.edu

Abstract

The Core Scientific Dataset (CSD) model with JavaScript Object Notation (JSON) serialization is presented as a lightweight, portable, and versatile standard for intra- and interdisciplinary scientific data exchange. This model supports datasets with a p -component dependent variable, $\{\mathbf{U}_0, \dots, \mathbf{U}_q, \dots, \mathbf{U}_{p-1}\}$, discretely sampled at M unique points in a d -dimensional independent variable $(\mathbf{X}_0, \dots, \mathbf{X}_k, \dots, \mathbf{X}_{d-1})$ space. Moreover, this sampling is over an orthogonal grid, *regular* or *rectilinear*, where the principal coordinate axes of the grid are the independent variables. It can also hold correlated datasets assuming the different physical quantities (dependent variables) are sampled on the same orthogonal grid of independent variables. The model encapsulates the dependent variables' sampled data values and the minimum metadata needed to accurately represent this data in an appropriate coordinate system of independent variables. The CSD model can serve as a re-usable building block in the development of more sophisticated portable scientific dataset file standards.

Keywords: open data, data management, information storage and retrieval, metadata, databases, data mining, computer software, software tools, data processing, data reduction, physical sciences, engineering, earth sciences, biology and life sciences.

1 Introduction

A frustrating and common problem faced by scientists in many disciplines is the lack of a portable scientific dataset format and universal standards for exchanging and archiving multi-dimensional datasets—both experimental and computational. Scientific datasets are too often saved in vendor-specific file-formats using proprietary software, making archiving and data-exchange problematic even within a discipline, let alone across disciplines. A majority of scientists rely on vendor-specific proprietary software to interact with their datasets. These scientists are at a constant risk that the original dataset files could become unreadable if a future version of the software stops supporting older file formats or the vendor stops supporting the software, or even worse, goes out of business.

As a result of such risks and incompatibilities, many scientists resort to using comma-separated values (CSV) files for dataset exchange and archival. Such an approach, however, is not resourceful, especially in the case of multi-dimensional datasets. Furthermore, such approaches often leave out essential metadata about experimental or computational procedures. Other scientists resort to specialized library packages to import datasets from the vendor-specific file formats into their favorite programming languages such as Matlab, Python, R, Java, or use the third-party software for dataset imports. This is only a temporary fix since it just delays the original problem as the dataset files are translated to yet another third-party software or user-specific file-format—and again, often with metadata loss.

With increasing pressure from the funding agencies and scientific journals to archive and share primary and processed data, there is a growing sense of urgency for a stable, resourceful and future-proof file-format for the exchange of scientific datasets. Here we take the first step in addressing this problem by proposing a *Core Scientific Dataset (CSD) Model* that can encode a wide variety of multi-dimensional and correlated datasets. The objective of the CSD model is to encapsulate the *data values* and the *minimum metadata* needed to accurately represent the data in an appropriate coordinate system. We envision the CSD model as a re-usable building block in a hierarchical description of more sophisticated portable scientific dataset file standards.

2 Overview of CSD Model

The CSD model supports a dataset of a continuous physical quantity (dependent variable) discretely sampled on a multi-dimensional grid with vertexes associated with one or more independent quantities (dimensions), e.g., a density as a function of temperature, a current as a function of voltage and time, an ionization energy as a function of element symbol, etc.

Similarly, the CSD model supports a dataset with a multi-component dependent variable. For example, a color image with a red, green, and blue (RGB) light intensity components as a function of two independent spatial dimensions, or the six components of the symmetric second-rank diffusion tensor MRI dataset as a function of three independent spatial dimensions. In the CSD model, a *dataset* is defined as an p -component dependent variable, $\{\mathbf{U}_0, \dots, \mathbf{U}_q, \dots, \mathbf{U}_{p-1}\}$, discretely sampled at M unique points in a d -dimensional $(\mathbf{X}_0, \dots, \mathbf{X}_k, \dots, \mathbf{X}_{d-1})$ space. Moreover, this sampling is over an orthogonal grid, *regular* or *rectilinear*, where the principal coordinate axes of the grid are the dimensions. A regular grid is an orthogonal grid where the spacing between vertex coordinates along each dimension is uniform. If the spacing along any one of the dimensions is not uniform, the grid is rectilinear.

The CSD model can also hold multiple datasets when different physical quantities (dependent variables) are sampled on the same multi-dimensional (independent variables) grid. We refer to this case as *correlated datasets*. One such example would be the simultaneous sampling of current and voltage as a function of time. Another example would be datasets for air temperature, pressure, wind velocity, and solar-flux, all simultaneously sampled on a two-dimensional grid associated with the same region of latitude and longitude coordinates.

We adopt the JavaScript Object Notation (JSON) as the file-serialization format [\[2\]](#) for the CSD model because it is human-readable, if properly organized, as well as *easily integrable* with any number of programming languages and field related application-software.

Figure 1. Unified Modeling Language (UML) [1] class diagram of the Core Scientific Dataset (CSD) Model. Each class is represented with a box that contains two compartments. The top compartment contains the name of the class, and the bottom compartment contains the attributes of the class. The enumerations `QuantityType`, `EncodingType`, and `NumericType` are described in Tables 4, 5, and 6, respectively. The enumeration `UnsignedIntegerType` is a subset of `NumericType` enumeration with only unsigned integers. The enumerations `DimObjectSubtype` and `DVObjectSubtype` are described in Tables 2 and 3 as the description of the `type` attribute. The **ScalarQuantity** represents a physical quantity containing a numerical value and a unit. Note: When encoding is `base64` the type and multiplicity for the `components` attribute in **InternalDependentVariable** is `String[1..*]`. Similarly, when encoding is `base64` the type and multiplicity for the `sparse_grid_vertexes` attribute in **SparseSampling** is `String[1]`.

2.1 UML Class Diagram

The schema for the CSD model, in the form of a UML class diagram [1], is shown in Fig. 1. In such diagrams, each class is represented with a box that contains two compartments. The top compartment contains the name of the class, and the bottom compartment contains the attributes of the class. A composition is depicted as a binary association decorated with a filled black diamond. Inheritance is shown as a line with a hollow triangle as an arrowhead.

Each line in the bottom compartment of a box describes a single attribute of the class in the form:

name : type [multiplicity] = default {properties}

In this line `name` is the name of an attribute in the class, `type` defines the kind of object that may be placed in the attribute, `multiplicity` indicates how many objects are assigned to the attribute. The multiplicity can be a single number, e.g., `"1"`, indicating that one object must be assigned to the attribute. Alternatively, the multiplicity can be given as a lower and upper bound for how many objects can be assigned to the attribute, e.g., `"[0..1]"` indicates that the assignment of a single object to an attribute is optional. An asterisk indicates an unlimited number of objects. For example, an attribute with a multiplicity of `"[1..*]"` must have no less than one object and an unlimited upper bound of objects that can be assigned to it. The `default` is the object assigned when an optional attribute is unspecified. The `{properties}` value at the end of the line gives additional information on the attribute. In Fig. 1 this is used to indicate whether a set of objects assigned to an attribute is ordered and/or unique.

For object attribute names we adopt the “snake case” convention with all lower case characters and “camel case” for class or type names. Attribute value types used in the model are given in Table 1 along with the corresponding JSON value type used for serialization of the model. Of particular importance in the CSD model is the **ScalarQuantity** type, which is composed of a numerical value and any valid SI unit symbol or any number of accepted non-SI unit symbols. It is serialized in the JSON file as a string containing a numerical value followed by the unit symbol, for example, `"3.4 m"` (SI) or `"2.3 bar"` (non-SI). The CSD model follows the International System of Units guideline [3] for defining the physical quantities. In software usage, one must adhere to stricter conventions for unit and physical constant symbols to avoid ambiguities and symbol collisions. All unit symbols are case sensitive. For derived unit symbols, the multiplication and division of the units are represented by the *asterisk* symbol, `"*"`, and the *solidus* symbol, `"/"`, respectively. For example, a unit of speed is `"m/s"`. Note that derived unit symbols in the CSD model require explicit use of the multiplication symbol instead of multiplication implied with spacing between symbols, e.g., use `"N*m"` instead of `"N m"`. Similarly, avoid the use of compound symbols, e.g., use `"kW*h"` instead of `"kWh"`. The *caret* symbol, `"^"` is used for raising unit symbols to

CSD model attribute value type	JSON value type
DependentVariable	object
Dimension	object
DimObjectSubtype	string
DVObjectSubtype	string
ScalarQuantity	string
NumericType	string
EncodingType	string
QuantityType	string
String	string
Integer	number
Boolean	boolean

Table 1. The relation between the CSD model attribute value types and the corresponding JSON serialized value type. In JSON serialization the attribute name is the JSON key.

a power—a unit of force is " $\text{kg}\cdot\text{m}^2/\text{s}^2$ ", and a unit of concentration is " g/cm^3 ".
 Operator precedence can be specified using parentheses, e.g., " $\text{J}/(\text{mol}\cdot\text{K})$ ". Also, note
 that while both $^{\circ}\text{C}$ and $^{\circ}\text{F}$ are valid units, they are not proper thermodynamic
 temperature units and are discouraged due to their ambiguity. Further details on the SI
 system and how units are used in the CSD model are given in the supporting
 information.

2.2 CSDM object

At the root level of the CSD model is the **CSDM** object. The **CSDM** object includes a
 required **version** attribute whose value is a string representing the version number of the
 CSD model, here assigned a string value of "1.0". The optional **timestamp** attribute
 indicates when the CSDM file was last serialized and holds a combined date and time
 string representation of the Coordinated Universal Time (UTC) formatted according to
 the ISO-8601 standard. The optional **geographic_coordinate** attribute indicates where
 the CSDM file was last serialized and holds a **GeographicCoordinate** object, inside
 which are three attributes: the required **latitude** and **longitude**, and the optional **altitude**.
 Positive latitude values indicate latitudes north of the equator, while negative values
 indicate latitudes south of the equator. Longitude values are relative to the zero
 meridian, with positive values extending east of the meridian and negative values
 extending west of the meridian. Positive altitudes indicate above sea level while negative
 values indicate below sea level. All three are **ScalarQuantity** types. The optional
 boolean **read_only** attribute is set to true for archived datasets—informing applications
 that the dataset should not be modified or overwritten. The optional **tags** attribute
 holds a set of UTF-8 allowed string values describing keywords associated with the
 dataset. The **description** attribute appears in nearly every CSD model object and holds
 a UTF-8 allowed string describing the instance of the model object. The **application**
 attribute also appears in nearly every CSD model object and is a generic object that
 can be used for storing application-specific metadata within the CSD model. Further
 details on the expected behavior of **application** attributes are given in section [2.5](#).

The **dependent_variables** and **dimensions** attributes each hold a set of
DependentVariable and **Dimension** objects, respectively. The ordered and unique set
of **Dimension** objects, indexed from $k = 0$ to $d - 1$, define the d -dimensional coordinate
grid where discrete samples of the dependent variables are taken.

2.3 Dimension object

The mapping of grid vertexes along the k^{th} dimension to an ordered set of coordinates, \mathbf{X}_k , are defined by one of three **Dimension** subtypes: **LabeledDimension**, **MonotonicDimension**, and **LinearDimension**. Figure 1 gives the required and optional attributes along with their default values for the three subtypes. Descriptions of the attributes for all three subtypes are also given in Table 2, and examples of various instances are given in section 3.

2.3.1 LabeledDimension object

An ordered set, \mathbf{A}_k , of N_k character string labels in the `labels` attribute of a **LabeledDimension** object are mapped to the grid vertexes along the k^{th} dimension, becoming the ordered set of coordinates, \mathbf{X}_k , along the dimension, as given by

$$\mathbf{X}_k = \mathbf{A}_k. \quad (1)$$

This is a purely qualitative dimension, with no physical significance given to the spacing between grid vertexes along the dimension.

2.3.2 MonotonicDimension object

An ordered set, \mathbf{A}_k , of N_k strictly ascending or descending coordinates in the `coordinates` attribute of a **MonotonicDimension** object are similarly mapped to the grid vertexes along the k^{th} dimension and become the ordered set of coordinates along the dimension, also given by Eq. (1).

For the **MonotonicDimension** and **LinearDimension** objects, the CSD model allows the mapping of grid vertexes along a dimension to an ordered set of absolute coordinates, $\mathbf{X}_k^{\text{abs}}$, using the `origin_offset` attribute according to

$$\mathbf{X}_k^{\text{abs}} = \mathbf{X}_k + o_k \mathbf{1}, \quad (2)$$

where o_k is the value of the `origin_offset` attribute. Note, the **ScalarQuantity** objects in \mathbf{X}_k , and o_k must all share the same unit dimensionality.

2.3.3 LinearDimension object

The ordered set of N_k uniformly spaced coordinates along the k^{th} **LinearDimension** object are given by

$$\mathbf{X}_k = \Delta x_k (\mathbf{J}_k - Z_k) + b_k \mathbf{1}, \quad (3)$$

where Δx_k and b_k are the **ScalarQuantity** objects in the `increment` and `coordinates_offset` attributes, respectively, and \mathbf{J}_k is an ordered set of coordinate indexes along the k^{th} dimension,

$$\mathbf{J}_k = [0, 1, 2, \dots, j_k, \dots, N_k - 1]. \quad (4)$$

Here, N_k is the **Integer** object in the `count` attribute. As before, the absolute coordinates along the k^{th} dimension are given by Eq. (2). Again, the **ScalarQuantity** objects Δx_k , b_k , and o_k must all share the same unit dimensionality.

The Z_k variable in Eq. (3) is an integer with a value of $Z_k = 0$ when the **LinearDimension** attribute `complex_fft` is `false`. The `complex_fft` is set to `true` when a complex fast Fourier transform (FFT) has been applied to the dataset along the k^{th} dimension, and then the value of Z_k becomes $T_k/2$, where $T_k = N_k$ and $N_k - 1$ for even and odd values of N_k , respectively. There are two reasons for the inclusion of the attribute `complex_fft` and the different values of Z_k . First, it provides the metadata

needed for determining whether a forward (`false`) or reverse (`true`) complex FFT should be performed on the dataset. Second, a value of $Z_k = T_k/2$ in Eq. (3) when `complex_fft` is `true` associates b_k with the zero “frequency” after a complex FFT. This definition makes b_k independent of count and the increment in the Reciprocal dimension, i.e., the dimension before the complex FFT.

2.3.4 ReciprocalDimension object

An optional attribute named `reciprocal` can be present in both the **LinearDimension** and **MonotonicDimension** objects. This attribute holds a **ReciprocalDimension** object which contains metadata about the coordinate that is reciprocal to the \mathbf{X}_k coordinate. This metadata is useful for datasets which are frequently transformed into the reciprocal dimension, such as NMR, FTIR and x-ray datasets.

2.4 DependentVariable object

The **DependentVariable** object can be one of two subtypes: **InternalDependentVariable** and **ExternalDependentVariable**, depending on whether the serialized components are stored internally with the rest of the serialized metadata or externally at a location specified by a uniform resource locator (URL), respectively. Descriptions of all **DependentVariable** attributes are given in Table 3, as well as through examples given in section 3. See Fig. 1 for the required and optional attributes along with their default values.

A **DependentVariable** object holds an ordered set of p components indexed from $q = 0$ to $p - 1$,

$$\{\mathbf{U}_0, \dots, \mathbf{U}_q, \dots, \mathbf{U}_{p-1}\}. \quad (5)$$

Each component, \mathbf{U}_q , contains an ordered array of M physical quantity values indexed from $i = 0$ to $M - 1$. These values represent samples on the coordinates grid and are ordered to follow a *column-major order* relative to the ordered set of dimensions. If \mathbf{U}_q contains a sample at every vertex of the d -dimensional grid, then

$$M = \prod_{k=0}^{d-1} N_k, \quad (6)$$

and the mapping of the values in \mathbf{U}_q to the grid vertexes follows a simple reshaping of \mathbf{U}_q to a $N_0 \times N_1 \times \dots \times N_{d-1}$ matrix where d is the number of **Dimension** objects. In this case, the location or memory offset of the i^{th} value in a component array maps to a grid vertex with coordinate indexes, $(j_0, j_1, \dots, j_{d-1})$, given by

$$j_k = \frac{i}{\prod_{\ell=0}^{k-1} N_\ell} \bmod N_k, \quad k = 0, \dots, d - 1. \quad (7)$$

Conversely, the memory offset of the i^{th} value in a component array is obtained from the ordered array of coordinate indexes $(j_0, j_1, \dots, j_{d-1})$, according to

$$i = \sum_{k=0}^{d-1} \left(\prod_{l=0}^{k-1} N_l \right) j_k. \quad (8)$$

It is also helpful to recall that the value of the empty product, $\prod_m^n a_m$ where $m > n$ is 1.

Taken together, the i^{th} values from each of the p components form a quantity specified by one of the `quantity_type` attribute values given in Table 4

Dimension	
attribute	description
type	<i>Required</i> attribute for all Dimension objects. Holds a String object with one of the allowed DimObjectSubtype enumeration literals— linear , monotonic or labeled .
labels	<i>Required</i> attribute for LabeledDimension objects. Holds an <i>ordered and unique array</i> of String objects containing UTF-8 allowed characters. <i>Invalid</i> for LinearDimension and MonotonicDimension objects.
coordinates	<i>Required</i> attribute for MonotonicDimension objects. Holds an <i>ordered and unique array</i> of strictly increasing or decreasing ScalarQuantity objects along the dimension. The dimensionality of ScalarQuantity objects must be consistent with each other and other dimension attributes. <i>Invalid</i> for LinearDimension and LabeledDimension objects.
count	<i>Required</i> attribute for LinearDimension objects. Holds an Integer object specifying the number of coordinates, N_k , along the dimension. <i>Invalid</i> for MonotonicDimension and LabeledDimension objects.
increment	<i>Required</i> attribute for LinearDimension objects. Holds a ScalarQuantity object specifying the increment, Δx_k , along the dimension. <i>Invalid</i> for MonotonicDimension and LabeledDimension objects.
coordinates_offset	<i>Optional</i> attribute for LinearDimension objects. Holds a ScalarQuantity object specifying the coordinates offset, b_k , used in Eq. (3) to calculate the coordinates along the dimension. The default value is a physical quantity with a numerical value of zero. <i>Invalid</i> for MonotonicDimension and LabeledDimension objects.
origin_offset	<i>Optional</i> attribute for LinearDimension and MonotonicDimension objects. Holds a ScalarQuantity object specifying the origin offset, o_k , along the dimension. The default value is a physical quantity with a numerical value of zero. <i>Invalid</i> for LabeledDimension objects.
complex_fft	<i>Optional</i> attribute for LinearDimension objects. Holds a Boolean specifying how the coordinate, \mathbf{X}_k , along the dimension are calculated from Eq. (3). When false , the value of $Z_k = 0$ otherwise, $Z_k = T_k/2$ where $T_k = N_k$ and $N_k - 1$ for even and odd values of N_k , respectively. <i>Invalid</i> for MonotonicDimension and LabeledDimension objects.
period	<i>Optional</i> attribute for MonotonicDimension and LinearDimension objects. Holds a ScalarQuantity object specifying the period of the dimension. The default value is a physical quantity with an infinite numerical value, that is, the absence of this key indicates that the dimension is non-periodic. When present it indicates that all dependent variables are periodic along the dimension. A ScalarQuantity object with a numerical value of zero is <i>invalid</i> for this attribute. <i>Invalid</i> for LabeledDimension objects.
quantity_name	<i>Optional</i> attribute for MonotonicDimension and LinearDimension objects. Holds a String object containing the <i>quantity name</i> associated with the dimension. This value may resolve ambiguities which may otherwise be inherent. For example, with only a unit of "J/(mol*K)", one cannot distinguish between the thermodynamic quantities 'molar entropy' and 'molar heat capacity.' Similarly, the units "1/s", "Bq", and "Hz" all have the dimensionality of inverse time, but generally "Bq" would be an acceptable unit for the quantity of radioactivity and "Hz" for frequency. If unspecified the valid quantity name is left at the end-user's discretion. A list of CSDM-accepted physical quantity names and their corresponding dimensionalities can be found in the supporting information. <i>Invalid</i> for LabeledDimension objects.
label	<i>Optional</i> attribute for all Dimension objects. Holds a String object of UTF-8 allowed characters containing the label for the Dimension object. The default value is an empty string.
description	<i>Optional</i> attribute for all Dimension objects. Holds a String object of UTF-8 allowed characters describing an instance of the Dimension object. The default value is an empty string.
reciprocal	<i>Optional</i> attribute for MonotonicDimension and LinearDimension objects. Holds a ReciprocalDimension object. See Fig. 1 for the list of attributes in this object. These attributes follow the same definitions as described in this Table with the only difference being that these attributes describe the reciprocal dimension. <i>Invalid</i> for LabeledDimension objects.
application	<i>Optional</i> attribute for all Dimension objects. Holds a generic dictionary object. See section 2.5 for expected behavior.

Table 2. The description of the attributes from the **Dimension** class in version 1.0 of the CSD model. There are three subtypes of this class—**LinearDimension**, **MonotonicDimension**, and **LabeledDimension**. See Fig. 1 for the list of *valid* attributes for a given subtype. If an attribute is optional, its value should only be serialized to the file if it is not the default value. As a recommendation, when deserializing a JSON file the numerical value associated with the physical quantities should be converted to a 32-bit or higher floating-point number.

DependentVariable	
attribute	description
type	<i>Required</i> attribute for all DependentVariable objects. Holds a String object with one of the two allowed DVObjectSubtype enumeration literals— internal or external .
components	<i>Required</i> attribute for InternalDependentVariable objects. Holds an <i>ordered array</i> of p components. When the value of the encoding attribute is none each component, U_q , is an <i>ordered array</i> of numerical values. When the value of the encoding attribute is base64 , each component is a Base64 string. <i>Invalid</i> for ExternalDependentVariable objects.
components_url	<i>Required</i> attribute for ExternalDependentVariable objects. Holds a String object containing the Uniform Resource Locator (URL) of a local or a remote file where the ordered array of numerical values $\{U_0, \dots, U_q, \dots, U_p\}$ are stored as binary data. The CSD model utilizes the https and file schemes for locating the files. For local data files, the URL is specified relative to the .csdfe file and is located either in the folder containing the .csdfe file or in a subfolder of the folder containing the .csdfe file. The corresponding syntax follows file:./relative/path/to/the/file . <i>Invalid</i> for InternalDependentVariable objects.
numeric_type	<i>Required</i> attribute for all DependentVariable objects. Holds a String object with one of the allowed NumericType enumeration literals from Table 6. This value represents the numeric type and the number of bits associated with each numerical value in Eq. (5) when the component data is stored in an external file or when Base64 encoded into a string. When numerical values are expressed as JSON numbers, this value specifies the numerical precision needed for import.
quantity_type	<i>Required</i> attribute for all DependentVariable objects. Holds a String object with any of the allowed QuantityType enumeration literals from Table 4. The value specifies the number, p , and interpretation of the DependentVariable components.
unit	<i>Optional</i> attribute for all DependentVariable objects. Holds a String object representing the unit associated with the data values in Eq. (5). The default value is "", i.e., the data values are dimensionless.
quantity_name	<i>Optional</i> attribute for all DependentVariable objects. Holds a String object containing the <i>quantity name</i> associated with the physical quantity. See the description for the quantity_name attribute in Table 2 for further details.
encoding	<i>Optional</i> attribute for InternalDependentVariable objects. Holds a String object with one of the allowed EncodingType enumeration literals in Table 5. This value specifies the encoding method used to store the data values in the components attribute. The default value is none . <i>Invalid</i> for ExternalDependentVariable objects.
component_labels	<i>Optional</i> attribute for all DependentVariable objects. Holds an <i>ordered array</i> of String objects where the q^{th} String is the label associated with the q^{th} component. The default value is an ordered set of empty strings.
name	<i>Optional</i> attribute for all DependentVariable objects. Holds a String object of UTF-8 allowed characters containing the name associated with the dependent variable. Naming is good practice as it improves the human readability of the serialized file when multiple dependent variables might be present. The default value is an empty string.
description	<i>Optional</i> attribute for all DependentVariable objects. Holds a String object of UTF-8 allowed characters describing an instance of the DependentVariable . The default value is an empty string.
sparse_sampling	<i>Optional</i> attribute for all DependentVariable objects. Holds a SparseSampling object, which contains the attributes dimension_indexes and sparse_grid_vertexes . The attribute dimension_indexes holds an array of integers indicating which dimensions in the ordered array of dimensions are sparsely sampled and form the sparse grid. The attribute sparse_grid_vertexes holds an array of integers defining the ordered set of sampled vertexes on the sparse grid. See section 2.4.1 for further details.
application	<i>Optional</i> attribute for all DependentVariable objects. Holds a generic dictionary object. See section 2.5 for expected behavior.

Table 3. The description of the attributes from the **DependentVariable** class in version 1.0 of the CSD model. If an attribute is optional, its value may only be serialized to the file if it is not the default value.

QuantityType	
scalar	This value represents a $p = 1$, single-component dependent variable where the i^{th} data value is interpreted as a scalar value, $\mathcal{S}_i = U_{0,i}$.
vector_n	The value represents a $p = n$ component dependent variable where the i^{th} data value is interpreted as a vector, $\mathcal{V}_i = [U_{0,i}, U_{1,i}, \dots, U_{n-1,i}]$.
matrix_m_n	The value represents a $p = mn$ component dependent variable where the i^{th} data value is interpreted as a $m \times n$ matrix, with m rows and n columns. The p components of the matrix are in column-major order. <div style="text-align: center; margin: 10px 0;"> $\mathcal{M}_i = \begin{bmatrix} U_{0,i} & U_{m,i} & \dots & U_{(n-1)m,i} \\ U_{1,i} & U_{m+1,i} & \dots & U_{(n-1)m+1,i} \\ \vdots & \vdots & \vdots & \vdots \\ U_{m-1,i} & U_{2m-1,i} & \dots & U_{nm-1,i} \end{bmatrix}.$ </div>
	Here, the entry at the r^{th} row and the c^{th} column is $U_{cm+r,i}$.
symmetric_matrix_n	The value represents a $p = \frac{n(n+1)}{2}$ component dependent variable. This is a special case of matrix data value where $n = m$ and the matrix is symmetric about the leading diagonal. In this case, only the upper half of the matrix is specified. The $n \times n$ symmetric matrix, $\mathcal{M}_i^{(s)}$, of the i^{th} data value is interpreted as, <div style="text-align: center; margin: 10px 0;"> $\mathcal{M}_i^{(s)} = \begin{bmatrix} U_{0,i} & U_{1,i} & \dots & U_{n-1,i} \\ U_{1,i} & U_{n,i} & \dots & U_{2n-2,i} \\ \vdots & \vdots & \vdots & \vdots \\ U_{n-1,i} & U_{2n-2,i} & \dots & U_{\frac{n(n+1)}{2}-1,i} \end{bmatrix}.$ </div>
pixel_n	The value represents a $p = n$ component dependent variable where the i^{th} data value is interpreted as a pixel, $[U_{0,i}, U_{1,i}, \dots, U_{n-1,i}]$, with the n components corresponding to pixel component intensities. Note this quantity type, as do all quantity types, is restricted to components that share the same physical dimensionality, i.e., can be added or subtracted, making it, for example, appropriate for holding RGB or CMYK components but not HSV components.

Table 4. The literals of the **QuantityType** enumeration allowed in version 1.0 of the CSD model along with its description. The literals are **String** objects and correspond to the value of the `quantity_type` attribute of the **DependentVariable** object. In the description, the index i refers to the i^{th} data value from the ordered array, \mathbf{U}_q , in Eq. (5).

EncodingType	
base64	The binary data corresponding to the ordered array of numerical values in \mathbf{U}_q from Eq. (5) is stored as a Base64 encoded strings for the <code>numeric_type</code> specified assuming 'little-endian' format. This is the recommended storage method when the <code>type</code> attribute of the corresponding DependentVariable object is <code>internal</code> .
none	The literal denotes that the ordered array of numerical values from Eq. (5) are serialized as JSON numbers. This is the default encoding type when the <code>encoding</code> attribute is not present in the DependentVariable object.

Table 5. The literals of the **EncodingType** enumeration allowed in version 1.0 of the CSD model along with its description. The literals are the **String** object corresponding to the value of the `encoding` attribute of the **DependentVariable** object.

NumericType	
uint8	8-bit unsigned integer
uint16	16-bit unsigned integer
uint32	32-bit unsigned integer
uint64	64-bit unsigned integer
int8	8-bit signed integer
int16	16-bit signed integer
int32	32-bit signed integer
int64	64-bit signed integer
float32	32-bit floating-point number
float64	64-bit floating-point number
complex64	two 32-bit floating-points numbers
complex128	two 64-bit floating-points numbers

Table 6. The literals of the **NumericType** enumeration allowed in version 1.0 of the CSD model along with its description. The literal is a **String** object corresponding to the value of the `numeric_type` attribute of the **DependentVariable** object.

InternalDependentVariable: The `components` attribute in an **InternalDependentVariable** object holds an *ordered array* of p components, and each component, \mathbf{U}_q , is an *ordered array* of M numerical values associated with the q^{th} component. When the value of the `encoding` attribute is `none` or unspecified, a JSON serialization of this object gives a human-readable list of numerical values. This approach, however, is not resourceful compared to the serialization of raw binary data. As JSON files are strictly text-based it is not possible to serialize raw binary data inside a JSON file. A commonly used approach to reduce JSON file sizes in such situations is to encode raw binary data into plain text using a binary-to-text encoding scheme. The CSD model allows this approach with the raw binary data for each component encoded into a Base64 string when the `encoding` attribute is set to `base64`. In this case, JSON serialization of the `components` attribute in an **InternalDependentVariable** object holds an *ordered array* of p Base64 strings where the q^{th} string represents the array \mathbf{U}_q . Out of the various binary-to-text encoding schemes, we chose Base64 encoding because of its widespread use and easy access to decoders across most object-oriented programming languages. Base64 provides an efficiency of $\sim 75\%$ compared to the serialization of raw binary data. When encoding and decoding raw binary data with Base64 we assume a ‘little-endian’ byte order for multi-byte numeric types such as 32-bit and 64-bit integers or floats. Typically, data saved on Intel x86 platforms use the little-endian as the native format. Also, binary floating-point standard IEEE 754 is assumed for float and complex numeric types.

ExternalDependentVariable: The `components_url` attribute is only *valid* when the value of the corresponding `type` attribute is `external`. Its value is a **String** object containing the address of a local or a remote file where the ordered array of numerical values $\{\mathbf{U}_0, \dots, \mathbf{U}_q, \dots, \mathbf{U}_p\}$ are stored as binary data. In this case we also assume little-endian byte order and the binary floating-point standard IEEE 754 for float and complex numeric types. The CSD model utilizes the `https` and `file` schemes of the Uniform Resource Locator (URL) for locating the files. For local data files, the URL is specified relative to the `.csdfe` file (see section 2.6) and is located either in the folder containing the `.csdfe` file or in a subfolder of the folder containing the `.csdfe` file. The corresponding syntax follows, `file:./relative/path/to/the/file`.

2.4.1 SparseSampling object

Equations (6), (7) and (8) are no longer valid when the **DependentVariable** components are sparsely sampled on the d dimensional grid. In this case, additional metadata is required to determine the grid vertex, $(j_0, j_1, \dots, j_{d-1})$, where the i^{th} sampled component value belongs. If the component is sparsely sampled along all d dimensions, then the additional metadata can be an ordered set of M grid vertexes. We must, however, consider the general mixed case of s fully sampled dimensions and $d - s$ sparsely sampled dimensions. In this case, we adopt an approach where the component values are organized into a set of fully sampled s -dimensional cross-sections taken at vertexes of a sub-grid formed from the sparsely sampled dimensions, which we will call the *sparse grid*. In adopting this approach, we require that the *component values along the fully sampled dimensions are packed together into the array in column-major order relative to the ordered set of fully sampled dimensions, i.e., excluding the sparsely sampled dimensions*.

The **SparseSampling** object provides this metadata in its two attributes `dimension_indexes` and `sparse_grid_vertexes`. The `dimension_indexes` attribute holds an ordered and unique set of integers indicating along which dimensions the **DependentVariable** is sparsely sampled. These dimensions form the sparse grid. The `sparse_grid_vertexes` holds an ordered set of vertexes on the sparse grid. Each sparse

grid vertex is an ordered array of $d - s$ indexes. To make the serialization more resourceful, we flatten the ordered set of arrays intended for the `sparse_grid_vertexes` attribute into an ordered array of integers, for example,

$$[[1, 0], [3, 4], [5, 7], [8, 11], \dots] \rightarrow [1, 0, 3, 4, 5, 7, 8, 11, \dots],$$

in a case of two sparsely sampled dimensions. The set of arrays (on the left) can be easily reconstructed from the array of integers (on the right) given the number of indexes specified in the `dimension_indexes` attribute. Additional storage reduction can be had by encoding the `sparse_grid_vertexes` array as a Base64 character string of specified `unsigned_integer_type` and little-endian byte ordering. The encoding attribute in the `SparseSampling` object would indicate this option with a value of `base64`.

2.5 Generic application objects - Beyond the CSD Model

As stated earlier, the objective of the CSD model is to encapsulate the *data values* and the *minimum metadata* needed to accurately represent the data in an appropriate coordinate system, that is, the minimum metadata for defining the current state of the dataset. Thus, the goal of the CSD model is to always remain relevant as the state of the dataset changes. In our refinement of the CSD model, we identified any metadata attribute as extraneous if it could become irrelevant as the state of the dataset changes. Metadata attributes extraneous to the CSD model could generally be classified as belonging in one of four broad and somewhat overlapping categories: acquisition, process, analysis, and presentation. The design of models organizing these extraneous metadata attributes tends to be scientific domain specific, although some commonalities exist. The CSD model allows the inclusion of metadata models describing these other categories using generic application objects. An application can place its own attribute type, e.g., a dictionary object with application-specific metadata attributes inside each generic application object using a reverse domain name notation string as the attribute key, for example, “com.example.myApp”. The use of a reverse-DNS key provides a simple mechanism for reducing name-space collisions. Overall, we believe generic application objects give the CSD model enough flexibility to become the native file format of many applications.

This approach, however, creates a dilemma when CSDM files are saved and opened by different applications. Specifically, what does an application from company B (e.g., “com.B.process”) do with generic application objects placed in a CSDM file by an application from company A (e.g., “com.A.acquire”)? On the one hand, company B could retain the company A specific metadata (as found) in the generic application object using the “com.A.acquire” key as well as serialize its own metadata using the “com.B.process” key. If the company B application made any modification to the dataset, however, it runs the risk that parts of the company A application-specific metadata are now irrelevant or logically inconsistent with the newly saved dataset—potentially causing company A’s application to crash when it tries to open this newly saved dataset. On the other hand, company B could decide to discard the company A specific metadata, in which case the company A application can safely open the dataset saved by company B, but will have lost all of its previously saved metadata. Finding a consistent solution to this dilemma is critically important as one can easily envision a workflow where a dataset passes through many applications as it progresses from the raw dataset to the final “product.” During such a workflow there is often an expectation of an audit trail, which most likely could be determined from application metadata saved by each application used during the workflow.

One approach that could solve this dilemma is to allow the CSDM file to contain a time-ordered array of CSDM objects. In other words, company B would simply append

a second CSDM object with only company B metadata to the array that already contains the CSDM object created by company A. No application metadata would be lost, and the metadata in each CSDM object would be relevant and logically consistent with its respective datasets. In this approach, the CSDM “array” file would grow as each application completes its task in the overall workflow.

It is our opinion, however, that it is better to delegate such a task of managing a time-ordered array of CSDM objects to the operating system. In this approach, we envision the workflow associated with a particular dataset to result in a folder containing a series of CSDM files, each a snapshot from the workflow as it progresses from the raw dataset to the final “product.” When each application is finished with its workflow task a CSDM file is saved with the `read_only` flag set to true, so that any future work on the dataset would be performed on a copy of the CSDM dataset, leaving the “read-only” file with application metadata intact. Typically, the `read_only` flag would be set to true immediately after the acquisition of raw data, after processing is complete, or after analysis of a dataset. Delegating the task of managing a time-ordered set of CSDM objects to the operating system also makes the workflow status involving individual CSDM files more transparent to the end-user. In adopting this solution we propose the general rule that *while application attributes should be visible to any application opening a CSDM file, only the reverse-DNS owners have permission to use their respective keys to place an attribute in an application object.*

An application could implement an additional layer of protection from application metadata loss by saving CSDM compliant files with its own application-specific file extension. Other applications could still open the CSDM compliant file but would be discouraged from saving with another application’s file extension.

2.6 JSON file-serialization

A JSON file is ordinarily a UTF-8 encoded text file which is built on two structures: a collection of unordered key-value pairs and an ordered list of values. The “key”: value pair is separated by a *colon* symbol, with the key to the left and the value to the right of the colon. Different key-value pairs are separated using *commas*. The JSON keys are always wrapped in double quotation marks, as in “key”, and the value type can either be (a) a string, (b) a number, (c) a JSON object, (d) an array, (e) a boolean or (d) null. A string is a composition of JSON allowed characters wrapped in double quotation marks. A number can be integer or float. A JSON object is an unordered set of key-value pairs which begins with a left curly brace, {, and ends in a right curly brace, }. An array is an ordered collection of JSON values that begins with a left square bracket, [, and ends in a right square bracket,]. A boolean is true or false. In the JSON serialization of the CSD model, the JSON “key” corresponds to the attribute name of the various CSD model objects while the JSON value and CSD model attribute value follow the relationship listed in Table 1.

Efforts have been made in the design of the CSD model to keep the keys intuitive and self-explanatory to all scientists and engineers. To further enhance the human-readability aspect of the files, we recommend, as a general rule, that no key be present in the file unless its value differs from the default value. With this in mind, the CSD model defines all boolean values as false when unspecified. In other words, the only boolean keys that need to appear in the file are those set to true.

The serialization file names are designated with two possible extensions: `.csdf` and `.csdfe`, the acronyms for Core Scientific Dataset Format and Core Scientific Dataset Format External. When all data values are stored within the file, i.e., there are no instances of an **ExternalDependentVariable** object in the serialization, then the `.csdf` file extension is allowed, otherwise, the serialization file name must use the extension `.csdfe`. This difference in extensions is intended to alert the end-user to a possible risk

of failure if the external data file is inaccessible when deserializing a file with the `.csdfe` file extensions. 343
344

3 $dD\{p_0, p_1, \dots\}$ example datasets 345

In this section we examine the CSD model in a number of illustrative examples. We use a shorthand notation of $dD\{p\}$ to indicate that a dataset has a p -component dependent variable defined on a d -dimensional coordinate grid. In the case of correlated datasets the number of components in each dependent variable is given as a list within the curly braces, i.e., $dD\{p_0, p_1, p_2, \dots\}$. 346
347
348
349
350

Efforts have been made to include examples across disciplines, although given our expertise in magnetic resonance spectroscopy, we include multiple examples from this field. It is worth noting, however, that magnetic resonance datasets prove to be excellent test cases for the CSD model as they are diverse and often multi-dimensional in nature. We have converted a variety of datasets from various fields to the CSD model format. To accomplish this, we utilize several Python packages [5,6] to import the original field-specific scientific datasets as Numpy [7] array(s) and export the latter in the CSD model format using the `csdmpy` package for Python, described in the appendix. 351
352
353
354
355
356
357
358

3.1 1D{1} examples 359

In this section, we examine the JSON serialization for illustrative cases of 1D{1} datasets. These are the simplest cases, with one dimension, $d = 1$, and one single-component dependent variable, $p = 1$. The supplementary material gives further 1D{1} examples from FITR, UV-vis, and EPR spectroscopies. 360
361
362
363

GMSL.csd 364

An example of a JSON serialized CSD model holding a 1D{1} dataset is shown in Listing 1. This dataset is a measurement of the global mean sea level [8] (GMSL) based on the satellite altimeter data from 1993-2009. 365
366
367

At the root level is the `csdm` key, an acronym for the core scientific dataset model. The value of this key is a JSON object which is a serialization of the CSD model's **CSDM** object and includes six keys—`version`, `timestamp`, `tags`, `description`, `dimensions`, and `dependent_variables`. The value of the `dimensions` key is an array (lines 7-14) with a single JSON object defined in-between lines 8 and 13. This object is a JSON serialization of the CSD model's **Dimension** object. In this example, it represents a **LinearDimension** object, as indicated by the value of `linear` in the `type` key, and with a coordinate count of 1608 as defined by the value of the key `count`. Furthermore, it is a temporal dimension with **ScalarQuantity** values of 0.08333 yr for `increment` and 1880.0417 yr for `coordinates_offset`. The coordinates at vertexes along this temporal dimension are obtained from Eq. (3). 368
369
370
371
372
373
374
375
376
377
378

The value of the `dependent_variables` key is an array (lines 15-31) with a single JSON object describing the global mean sea level. This object is a JSON serialization of an **InternalDependentVariable** object, with data values stored within the object, as indicated by the value of `internal` for the `type` key. The data values are serialized as JSON numbers as seen in-between lines 23-28 of Listing 1. Ellipses indicate where superfluous lines were omitted from the listing. The value of `float32` for the `numeric_type` key indicates that the array of JSON numbers should be converted into a numerical array of data values with 32-bit floating-point precision on import. The value of `mm` for the `unit` key is the unit associated with the data values. The value of the `component_labels` is an array with a single entry holding the label associated with the 379
380
381
382
383
384
385
386
387
388

```

GMSL.csd
1 {
2   "csdm": {
3     "version": "1.0",
4     "timestamp": "2019-05-21T13:43:00Z",
5     "tags": ["Jason-2", "satellite altimetry", "mean sea level", "climate"],
6     "description": "Global Mean Sea Level (GMSL) rise from late 19th to Early 21st
7       Century.",
8     "dimensions": [
9       {
10        "type": "linear",
11        "count": 1608,
12        "increment": "0.083333333 yr",
13        "coordinates_offset": "1880.0417 yr"
14      }
15    ],
16    "dependent_variables": [
17      {
18        "type": "internal",
19        "unit": "mm",
20        "quantity_type": "scalar",
21        "numeric_type": "float32",
22        "component_labels": ["GMSL"],
23        "components": [
24          [-183.0,
25            -171.125,
26            ...,
27            59.6875,
28            58.5]
29        ]
30      }
31    ]
32  }
33 }

```

Listing 1. A JSON serialized CSD model describing the global mean sea level dataset. The listing was created by the authors using data from reference [8].

Figure 2. A line plot, derived from Listing [1], depicting the global mean sea level as a function of time. The figure was created by the authors using data from reference [8].

component values. The value of `scalar` for the `quantity_type` key indicates that the component of the dependent variable is interpreted as scalar.

A plot of the dataset is shown in Fig. 2. Note that meta-data on how a dataset is presented in a plot or otherwise is not included in the CSD model. While such presentation metadata is outside the scope of the core model, it can be included in an application dictionary.

blochDecay.csdf

Another simple example of a 1D{1} dataset is shown in Listing 2. This example corresponds to a ^{13}C free induction decay signal from a nuclear magnetic resonance spectroscopy of ethanol.

The value of the `dimensions` key is an array (lines 12-26) with a single JSON serialized **LinearDimension** object (lines 13-25) representing a temporal dimension with 4096 coordinate positions sampled every 0.1 ms starting at -0.3 ms. The coordinate values along the dimension are evaluated using Eq. (3). This **LinearDimension** object also contains an optional JSON serialized **ReciprocalDimension** object (lines 19-24) as the value of the `reciprocal` key. In this example, it provides the metadata needed for describing the reciprocal time or the frequency dimension, i.e., after a Fourier transform.

The value of the `dependent_variables` key is an array (lines 27-41) with a single JSON serialized **InternalDependentVariable** object (lines 28-40) describing the signal response. While the keys and values in this object are similar to the corresponding object from the previous example, a key difference is that the value of the `numeric_type` key denotes a `complex64` numeric type. Complex numbers are stored as an ordered array of alternating real and imaginary data values, starting with the real value. In this example, the first and the last complex numbers of the signal in Fig. 3 are $(-8899.406 - i1276.773)$ and $(-193.923 - i67.065)$, respectively. Note that the length of the ordered data array is $2M$ for complex numeric types, where M is the total number of sampled data points. Figure 3 shows a line plot of the time domain NMR decay signal.

acetone.csdf

In Listing 3 is an illustration of a 1D{1} mass spectrum dataset serialized with sparse sampling. Here the **InternalDependentVariable** object (lines 17-43) holds a **SparseSampling** object (lines 23-34) in the `sparse_sampling` key. Inside the **SparseSampling** object are the three keys `dimensions_indexes`, `sparse_grid_vertexes`, and `unsigned_integer_type`. The `dimensions_indexes` key holds an array of integers specifying the indexes of the dimensions along which the dependent variable is sparsely sampled. In this case, it is the zeroth dimension, i.e., the only dimension in the dataset. The `sparse_grid_vertexes` key holds an array of integers specifying the vertexes on the one-dimensional sparsely sampled grid. Again, in this example with only one dimension, the array of integers corresponds to the sampled sparse grid vertexes, i.e., the coordinate indexes, j_0 , along the zeroth dimension. The value `uint8` for the `unsigned_integer_type` key is the numeric type used when importing the JSON serialized integer array from the `sparse_grid_vertexes` key.

3.2 2D{1} examples

TEM.csdf

Figure 4 is an intensity plot of a Transmission Electron Microscopy (TEM) dataset of a section of the early larval brain of *Drosophila melanogaster* used in the analysis of neuronal microcircuitry [9]. The CSDM JSON serialization for this 2D{1} dataset is

```

blochDecay.csdm
1 {
2   "csdm": {
3     "version": "1.0",
4     "timestamp": "2016-03-12T16:41:00Z",
5     "geographic_coordinate": {
6       "altitude": "238.9719543457031 m",
7       "longitude": "-83.05154573892345°",
8       "latitude": "39.97968794964322°"
9     },
10    "tags": ["13C", "NMR", "spectrum", "ethanol"],
11    "description": "A time domain NMR 13C Bloch decay signal of ethanol.",
12    "dimensions": [
13      {
14        "type": "linear",
15        "count": 4096,
16        "increment": "0.1 ms",
17        "coordinates_offset": "-0.3 ms",
18        "quantity_name": "time",
19        "reciprocal": {
20          "quantity_name": "frequency",
21          "origin_offset": "75.42632886 MHz",
22          "coordinates_offset": "3.005363 kHz",
23          "label": "13C frequency shift"
24        }
25      }
26    ],
27    "dependent_variables": [
28      {
29        "type": "internal",
30        "quantity_type": "scalar",
31        "numeric_type": "complex64",
32        "components": [
33          [-8899.40625,
34           -1276.7734375,
35           ...,
36           ...,
37           -193.9228515625,
38           -67.06524658203125]
39        ]
40      }
41    ]
42  }
43 }

```

Listing 2. JSON serialized CSD model describing the ^{13}C NMR Bloch decay time signal along with the relevant metadata of the reciprocal frequency dimension.

Figure 3. A plot, derived from Listing 2, of the real (left) and imaginary (right) ^{13}C NMR Bloch decay signal as a function of time.

```

acetone.csd
1 {
2   "csdm": {
3     "version": "1.0",
4     "timestamp": "2019-06-23T17:53:26Z",
5     "description": "Mass spectrum of acetone",
6     "dimensions": [
7       {
8         "type": "linear",
9         "count": 51,
10        "increment": "1",
11        "coordinates_offset": "10",
12        "label": "m/z",
13        "quantity_name": "dimensionless"
14      }
15    ],
16    "dependent_variables": [
17      {
18        "type": "internal",
19        "name": "acetone",
20        "numeric_type": "float32",
21        "quantity_type": "scalar",
22        "component_labels": ["relative abundance"],
23        "sparse_sampling": {
24          "dimension_indexes": [0],
25          "sparse_grid_vertexes": [
26            27,
27            28,
28            ...,
29            ...,
30            48,
31            49
32          ],
33          "unsigned_integer_type": "uint8"
34        },
35        "components": [
36          [9,
37            9,
38            ...,
39            ...,
40            270,
41            10]
42        ]
43      }
44    ]
45  }
46 }

```

Listing 3. JSON serialized CSD model describing the mass spectrum of acetone.

```

TEM.csf
1 {
2   "csdm": {
3     "version": "1.0",
4     "timestamp": "2016-03-12T16:41:00Z",
5     "tags": ["TEM", "Drosophila melanogaster"],
6     "description": "TEM image of the early larval brain of Drosophila melanogaster
7       used in the analysis of neuronal microcircuitry.",
8     "dimensions": [
9       {
10        "type": "linear",
11        "count": 512,
12        "increment": "4.0 nm",
13      },
14      {
15        "type": "linear",
16        "count": 512,
17        "increment": "4.0 nm"
18      }
19    ],
20    "dependent_variables": [
21      {
22        "type": "internal",
23        "quantity_type": "scalar",
24        "numeric_type": "uint8",
25        "encoding": "base64",
26        "components": ["fmt6fI0DjI5w ... 0nfzbekqw=="]
27      }
28    ]
29  }

```

Listing 4. JSON serialized listing of a TEM dataset containing one single-component **InternalDependentVariable** object and two **LinearDimension** objects. The listing was created by the authors using data from reference [9](#).

Figure 4. An intensity plot, derived from Listing [4](#) of a TEM dataset depicting the early larval brain of *Drosophila melanogaster*. The figure was created by the authors using data from reference [9](#).

given in Listing 4. This dataset has two dimensions, $d = 2$, and one single-component dependent variable, $p = 1$. 435

The value of the `dimensions` key is an array with two JSON serialized **LinearDimension** objects, defined in-between lines 8-12 and 13-17. Both these objects describe a linearly sampled spatial dimension with 512 points sampled every 4 nm. As before, Eq. (3) gives the ordered list of the coordinates along the respective dimensions. The value of the `dependent_variables` key is an array containing a single JSON serialized **InternalDependentVariable** object (lines 20-26). Unlike the previous examples, the value of the `components` key is an array with a single element. This element is a Base64 encoded string, as indicated by the `encoding` key, and decodes to an array of binary data values which are interpreted as an array of numerical values with a `uint8` numeric type. The array of numerical values is then mapped to the 512×512 coordinate grid according to Eqs. (7) and (8). 437 438 439 440 441 442 443 444 445 446 447

`bubble.csdfe` 448

In Fig. 5 and in Listing 5 we present a 2D{1} astronomy dataset of the bubble nebula acquired at 656 nm wavelength by the Hubble Heritage Project [10] team. In this example, the value of the `dimensions` key is an array with two JSON serialized **LinearDimension** objects defined in lines 8-15 and 16-23. Both these objects describe a linearly sampled angular dimension. The value of the `dependent_variables` key is an array with a single JSON serialized **ExternalDependentVariable** object, described in lines 26-32. In this example, the value of the `type` key is `external`, indicating that the data values are stored in an external file located at the Uniform Resource Locator (URL) address given by the `components_url` key. In this case, the address corresponds to a local file, designated by the `file` scheme of the URL, relative to the location of the `bubble.csdfe` file. The external file holds an ordered array of 11592×11351 binary values, which are specified by the `numeric_type` key as 32-bit floating-point numbers. 449 450 451 452 453 454 455 456 457 458 459 460

`satRec.csdfe` 461

A monotonic dimension is employed when measurements are not uniformly spaced or span several orders of magnitude along a dimension. An example of a 2D{1} dataset with a monotonic dimension is given in Listing 6. Here the dataset comes from a ^{29}Si NMR magnetization recovery measurement of a highly siliceous ZSM-12 zeolite sampled on a 2D rectilinear grid. Figure 6 depicts a stacked plot corresponding to the dataset from Listing 6. 462 463 464 465 466 467

The value of the `dimensions` key is an array with two JSON serialized **Dimension** objects (lines 18-30 and 31-38). The first is a **LinearDimension** object, labeled as t_2 , describing a temporal dimension with 1024 points sampled at every $80 \mu\text{s}$ with a `coordinates_offset` of -41.04 ms. Additionally, this **LinearDimension** object contains a **ReciprocalDimension** object serialized as the value of the `reciprocal` key. The second is a **MonotonicDimension** object, labeled as t_1 , with the coordinates associated with grid vertexes along the dimension explicitly given in the ordered set of values in the `coordinates` key. The value of the `dependent_variables` key is an array with a single JSON serialized **InternalDependentVariable** object (lines 41-47) describing the signal response. Here, the data values are encoded as an array with one Base64 string in the `components` key. 468 469 470 471 472 473 474 475 476 477 478

This listing also gives an example of the use of the `application` key in the `csdm` dictionary. Here an application owning the domain name `physyapps.com` has placed an attribute in the `application` dictionary using the reverse domain name key `com.physyapps.rmn`. Domain name owners are free to place any valid JSON object as the value of their respective reverse domain name attribute inside the `application` 479 480 481 482 483

```

bubble.csdf
1 {
2   "csdm": {
3     "version": "1.0",
4     "timestamp": "2016-02-26T16:41:00Z",
5     "tags": ["Bubble Nebula","Hubble"],
6     "description": "The dataset is a new observation of the Bubble Nebula acquired
7       by The Hubble Heritage Team, in February 2016.",
8     "dimensions": [
9       {
10        "type": "linear",
11        "count": 11596,
12        "increment": "-2.27930619e-05 °",
13        "coordinates_offset": "350.311874957 °",
14        "quantity_name": "plane angle",
15        "label": "Right Ascension"
16      },
17      {
18        "type": "linear",
19        "count": 11351,
20        "increment": "1.10055218e-05 °",
21        "coordinates_offset": "61.12851495 °",
22        "quantity_name": "plane angle",
23        "label": "Declination"
24      }
25    ],
26    "dependent_variables": [
27      {
28        "type": "external",
29        "name": "Bubble Nebula, 656nm",
30        "quantity_type": "scalar",
31        "numeric_type": "float32",
32        "components_url": "file:./Bubble_1.dat"
33      }
34    ]
35  }

```

Listing 5. JSON serialized listing of the astronomy dataset describing the bubble nebula observed at 656 nm wavelength. The listing was created by the authors using data from reference [10].

Figure 5. A log intensity plot, derived from Listing [5] of the bubble nebula [10] observed at 656 nm wavelength. The figure was created by the authors using data from reference [10].

```

satRec.csd
1 {
2   "csdm": {
3     "version": "1.0",
4     "timestamp": "2016-03-12T16:41:00Z",
5     "tags": ["29Si", "NMR", "nuclear magnetism relaxation", "zeolite ZSM-12"],
6     "description": "A 29Si NMR magnetization saturation recovery measurement of
7       highly siliceous zeolite ZSM-12.",
8     "application": {
9       "com.physyapps.rmn": {
10        "focus": {
11          "mem_offset": 166,
12          "component_index": 0,
13          "dependent_variable_index": 0
14        },
15        "dimension_precedence": [0,1]
16      }
17    }
18    "dimensions": [
19      {
20        "type": "linear",
21        "count": 1024,
22        "increment": "0.08 ms",
23        "coordinates_offset": "-41.04 ms",
24        "label": "t2",
25        "reciprocal": {
26          "origin_offset": "79.578822262 MHz",
27          "coordinates_offset": "-8.7660626 kHz",
28          "quantity_name": "frequency",
29          "label": "29Si frequency shift"
30        }
31      },
32      {
33        "type": "monotonic",
34        "coordinates": [
35          "1 s", "5 s", "10 s", "20 s", "40 s", "80 s"
36        ],
37        "label": "t1",
38        "quantity_name": "time"
39      }
40    ],
41    "dependent_variables": [
42      {
43        "type": "internal",
44        "quantity_type": "scalar",
45        "numeric_type": "complex64",
46        "encoding": "base64",
47        "components": ["AEU2Q7h/...yONGPyJD"]
48      }
49    ]
50  }

```

Listing 6. JSON serialized listing of ^{29}Si NMR magnetization saturation relaxation dataset containing one single-component **DependentVariable** object and two **Dimension** objects.

Figure 6. A stacked plot, derived from Listing 6, of an NMR dataset depicting the ^{29}Si saturation recovery measurement of a highly siliceous ZSM-12 zeolite.

dictionary. In this case, the domain name owner has used the reverse domain name key `com.physyapps.rmn` to place a dictionary holding two keys, `focus` and `dimension_precedence`.

An application key can also be placed in any **Dimension**, **ReciprocalDimension**, **DependentVariable**, and **SparseSampling** object. Again, according to the rule in section 2.5, only the reverse domain name owner has permission to serialize a file using their respective reverse domain name as a key in the application attribute.

`iglu_1d.csf`

Listing 7 is a $2\text{D}\{1\}$ example of an NMR signal with sparse sampling along one dimension 11. Here the **InternalDependentVariable** object (lines 30-44) holds a **SparseSampling** object (lines 37-43) in the `sparse_sampling` key. The **SparseSampling** object contains three keys `dimension_indexes`, `sparse_grid_vertexes`, and `unsigned_integer_type`. The `dimension_indexes` key holds an array of integers specifying the indexes of the dimensions along which the dependent variable is sparsely sampled, in this case, the $k = 1$ dimension. The `sparse_grid_vertexes` key holds an array of integers specifying the vertexes on the one-dimensional sparsely sampled grid. Since there are two dimensions in the dataset the array of integers corresponds to the coordinate indexes, j_1 , along the $k = 1$ dimension. In this example, the dependent variable values are fully sampled along the $k = 0$ dimension. The value of the `unsigned_integer_type` key holds the numeric type used in importing the integer array from `sparse_grid_vertexes`.

`iglu_2d.csf`

Listing 8 is a $2\text{D}\{1\}$ example of an NMR signal shown in Fig 8 with sparse sampling along two dimensions 11. As before, the `sparse_sampling` key holds a **SparseSampling** object with the `dimension_indexes`, `sparse_grid_vertexes`, and `unsigned_integer_type` attributes. The `dimension_indexes` key holds an array of two integers, $k = 0$ and 1, specifying the sparse sampling dimensions. The `sparse_grid_vertexes` key holds an array of integers defining the vertexes on the two-dimensional sparsely sampled grid. As described in section 2.4.1 this array is a flattened ordered set of arrays which can be reshaped into the ordered set of sparse grid vertexes, i.e.,

$$[0, 0, 1, 0, \dots, 972, 511, 1015, 511] \longrightarrow [[0, 0], [1, 0], \dots, [972, 511], [1015, 511]].$$

The i^{th} vertex in the ordered set of sparse grid vertexes specifies the sparse grid location of the i^{th} value in each component array of the dependent variable.

3.3 $2\text{D}\{3\}$ example

`RGB_image.csf`

A simple example of a 2D dataset with multiple components is a color image, such as the one shown in Fig. 9. This is a $2\text{D}\{3\}$ dataset, with two **LinearDimension** objects and one three-component dependent variable, $p = 3$. The CSDM serialization is shown in Listing 9. The `dimensions` key holds an array with two JSON serialized **LinearDimension** objects (lines 8-13 and 14-19) with 1024 and 768 points, respectively,


```

iglu_1d.csdfe
1 {
2   "csdm": {
3     "version": "1.0",
4     "timestamp": "2019-07-07T23:41:50Z",
5     "dimensions": [
6       {
7         "type": "linear",
8         "count": 1024,
9         "increment": "0.192 ms",
10        "label": "1H t2",
11        "quantity_name": "time",
12        "reciprocal": {
13          "origin_offset": "400.13 MHz",
14          "quantity_name": "frequency",
15          "coordinates_offset": "-3.32 Hz"}
16      },
17      {
18        "type": "linear",
19        "count": 512,
20        "increment": "0.192 ms",
21        "label": "1H t1",
22        "quantity_name": "time",
23        "reciprocal": {
24          "origin_offset": "400.13 MHz",
25          "quantity_name": "frequency",
26          "coordinates_offset": "-3.32 Hz"}
27      }
28    ],
29    "dependent_variables": [
30      {
31        "quantity_name": "dimensionless",
32        "numeric_type": "complex64",
33        "components_url": "cos.data",
34        "quantity_type": "scalar",
35        "type": "external",
36        "name": "cos",
37        "sparse_sampling": {
38          "dimension_indexes": [1],
39          "sparse_grid_vertexes": [
40            0, 1, ..., 470, 499
41          ],
42          "unsigned_integer_type": "uint16"
43        }
44      }
45    ]
46  }
47 }

```

Listing 7. JSON serialized listing of ^{13}C - ^{15}N NMR HSQC dataset containing one single-component **DependentVariable** object and two **Dimension** objects. The listing was created by the authors using data from reference [\[1\]](#).

Figure 7. A plot, derived from Listing 7 of the real part 2D{1} dataset sparsely sampled in one dimension. The figure was created by the authors using data from reference 11.

and a unit sampling interval. The `dependent_variable` key holds an array with a single JSON serialized **InternalDependentVariable** object (lines 22-34) containing an image dataset as indicated by the `pixel_3` value of the `quantity_type` key. The first part, `pixel`, indicates pixel data, and the last part, `3`, gives the number of pixel components. An array holding to the three components, i.e., the red, green, and blue color intensities with each encoded as a Base64 string, is the value of the `components` key. The Base64 decoded binary data values are then interpreted as an array of 8-bit unsigned integer (`uint8`), for each component, and subsequently mapped onto a 1024×768 coordinate grid. The value of the `component_labels` key is an array of the labels ordered to match the order of the components.

3.4 3D{2} example

`wind_velocity.csdfe`

An example of a 3D{2} dataset, i.e., with three dimensions, $d = 3$, and one two-component dependent variable, $p = 2$, is the wind velocity prediction 12 dataset as a function of latitude, longitude and time, shown in Listing 10.

The value of the `dimensions` key is an array with three JSON serialized **Dimension** objects. The first two **LinearDimension** objects, labeled as *longitude* and *latitudes* respectively, describe two linear dimensions sampled at every 0.5° for 49 points starting at -102.5° longitudes and 13.5° latitudes. Together, these two objects create a two-dimensional grid that spans the region around the Gulf of Mexico as depicted in Fig. 10. The third dimension is a **LabeledDimension** object as indicated by the value of the `type` key. The corresponding labels array lists six *date-time stamps* entries.

The value of the `dependent_variable` key is an array with a single JSON serialized **ExternalDependentVariable** object (lines 34-43) containing a two-component vector dataset as identified by the `quantity_type` key-value. This value is `vector_2` where the first part, `vector`, indicates vector data, and the last part, `2`, gives the number of vector components. The two vector components are labeled as `ugrd10m-eastward_wind` and `vgrd10m-northward_wind`, in the array assigned to the `component_labels` key. The data values are located in an external file as a binary data whose address, relative to the `wind_velocity.csdfe` file, is the value of the `components_url` key. The binary data is interpreted as a 32-bit floating-point numerical array. Note, because the binary data does not support array indexing, unlike JSON serialization, the corresponding numerical array of data values is reshaped into a matrix which includes the number of components. In this case, the reshaped matrix is $49 \times 49 \times 6 \times 2$, where the last number is the number of components, $p = 2$, and the remaining three is the number of points from the **Dimension** objects. Table 4 contains a description of the number of components, p , for each `quantity_type`.

Figure 10 depicts a quiver plot of the wind velocity at three different date-time stamps. Underlaid these plots is a map of the Earth corresponding to the given range of latitudes and longitudes. These plots were generated using the Matplotlib library 14 for python in addition to the Matplotlib Basemap toolkit 13 for rendering maps.

```

iglu_2d.csdfe
1 {
2   "csdm": {
3     "version": "1.0",
4     "timestamp": "2019-07-14T15:13:09Z",
5     "dimensions": [
6       {
7         "quantity_name": "time",
8         "type": "linear",
9         "count": 1024,
10        "increment": "0.192 ms",
11        "label": "1H t2",
12        "reciprocal": {
13          "origin_offset": "400.13 MHz",
14          "quantity_name": "frequency",
15          "coordinates_offset": "-3.32 Hz"}
16      },
17      {
18        "quantity_name": "time",
19        "type": "linear",
20        "count": 512,
21        "increment": "0.192 ms",
22        "label": "1H t1",
23        "reciprocal": {
24          "origin_offset": "400.13 MHz",
25          "quantity_name": "frequency",
26          "coordinates_offset": "-3.32 Hz"}
27      }
28    ],
29    "dependent_variables": [
30      {
31        "type": "external",
32        "quantity_name": "dimensionless",
33        "numeric_type": "complex64",
34        "quantity_type": "scalar",
35        "components_url": "cos.data",
36        "sparse_sampling": {
37          "dimension_indexes": [0, 1],
38          "sparse_grid_vertexes": [
39            0, 0, 1, 0, ..., 972, 511, 1015, 511
40          ],
41          "unsigned_integer_type": "uint16"
42        },
43      }
44    ]
45  }
46 }

```

Listing 8. JSON serialized listing of ^1H NMR TOCSY dataset containing two **Dimension** objects and one single-component **DependentVariable** object with sparsely sampled values in both dimensions. The listing was created by the authors using data from reference [\[11\]](#)

Figure 8. A plot, derived from in Listing 8 of the real part of a $2D\{1\}$ dataset sparsely sampled in both dimensions. The figure was created by the authors using data from reference [11].

```
RGB_image.csdf
1 {
2   "csdm": {
3     "version": "1.0",
4     "timestamp": "2016-03-12T16:41:00Z",
5     "tags": ["raccoon", "image", "Judy Weggelaar"],
6     "description": "An RGB image of a raccoon face.",
7     "dimensions": [
8       {
9         "type": "linear",
10        "count": 1024,
11        "increment": "1",
12        "label": "horizontal index"
13      },
14      {
15        "type": "linear",
16        "count": 768,
17        "increment": "1",
18        "label": "vertical index"
19      }
20    ],
21    "dependent_variables": [
22      {
23        "type": "internal",
24        "name": "raccoon",
25        "quantity_type": "pixel_3",
26        "numeric_type": "uint8",
27        "encoding": "base64",
28        "component_labels": ["Red", "Green", "Blue"],
29        "components": [
30          "eYqZm5ue ... eH15eHd2",
31          "cIGQkpKU ... m5ycnJua",
32          "g5Slp6es ... ZWRiX11c"
33        ]
34      }
35    ]
36  }
37 }
```

Listing 9. JSON serialized listing of an RGB image dataset containing two **Dimension** objects, and one **DependentVariable** object with three components corresponding to red, green and blue color intensities. The listing was created by the authors using data from <https://pixnio.com/fauna-animals/raccoons/raccoon-procyon-lotor> in public domain under (Creative common 0) CC0 license.

Figure 9. An image plot, derived from Listing 9 of an RGB dataset depicting a raccoon face. Photo: Judy Weggelaar

```

wind_velocity.csdfe
1 {
2   "csdm": {
3     "version": "1.0",
4     "timestamp": "2018-12-12T10:00:00Z",
5     "tags": ["wind velocity", "weather forecast"],
6     "description": "Dataset from NOAA/NCEP Global Forecast System (GFS) Atmospheric
7       Model. Latitudes and longitudes defined in geographic coordinate system
8       .",
9     "dimensions": [
10      {
11        "type": "linear",
12        "label": "longitude",
13        "count": 49,
14        "coordinates_offset": "-102.5 °",
15        "increment": "0.5 °"},
16      {
17        "type": "linear",
18        "label": "latitude",
19        "count": 49,
20        "coordinates_offset": "13.5 °",
21        "increment": "0.5 °"},
22      {
23        "type": "labeled",
24        "description": "Forecast time for ForecastModelRunCollection. Data time
25          stamps defined with ISO 8601 format.",
26        "label": "UTC date-time stamp",
27        "labels": [
28          "2018-12-12T12:00:00Z",
29          "2018-12-12T18:00:00Z",
30          "2018-12-13T00:00:00Z",
31          "2018-12-13T06:00:00Z",
32          "2018-12-13T12:00:00Z",
33          "2018-12-13T18:00:00Z"]
34      }
35    ],
36    "dependent_variables": [
37      {
38        "type": "external",
39        "description": "Component labels are standard attribute names used by
40          Dataset Attribute Structure (.das). 'ugrd10m' is 'eastward wind
41          velocity at 10 m above ground level', and 'vgrd10m' is 'northward wind
42          velocity at 10 m above 'ground level'.",
43        "components_url": "file://NCEP_Global.dat",
44        "component_labels": ["ugrd10m-eastward_wind", "vgrd10m-northward_wind"],
45        "quantity_type": "vector_2",
46        "name": "Wind velocity dataset",
47        "numeric_type": "float32",
48        "quantity_name": "speed",
49        "unit": "m/s"
50      }
51    ]
52  }
53 }

```

Listing 10. JSON serialized listing of the predicted wind velocities over and around the Gulf of Mexico. The model contains one two-component **DependentVariable** object and three **Dimension** objects. Listing was created by the authors using data from the national centers for environment information/national oceanic and atmospheric administration [12].

Figure 10. A quiver plot, derived from Listing 10, of the wind velocities from the dataset in Listing 10 at three different date-time stamps. The underlaid map of the Earth corresponding to the latitudes and longitudes is rendered using the Matplotlib Basemap toolkit 13. The figure was created by the authors using data from reference 12.

3.5 3D{6} example

brain_MRI.csd

A 3D{6} dataset has three dimensions, $d = 3$, and one six-component dependent variable, $p = 6$. An example of such a dataset is the second rank symmetric diffusion tensor MRI dataset 15 of a brain given in Listing 11.

The value of the `dimensions` key is an array with three JSON serialized **Dimension** objects describing the three spatial dimensions, labeled as x , y , and z respectively. Here, all objects describe a linear dimension with the sampling resolution of 1 mm, and 148, 190 and 160 points along the respective dimension.

The value of the `dependent_variables` key is an array with a single JSON serialized **InternalDependentVariable** object (lines 30-52) describing a symmetric matrix dataset as indicated by the value of the `quantity_type` key. The value `symmetric_matrix_3` emphasizes a six-component dataset as noted in Table 4. The six components, labeled as D_{xx} , D_{xy} , D_{xz} , D_{yy} , D_{yz} , and D_{zz} respectively, are stored as Base64 strings as the value of the `components` key. Each Base64 decoded binary array is interpreted as 32-bit floating-points array and subsequently reshaped to a $148 \times 190 \times 160$ matrix.

The symmetric matrix data from the `brain_MRI.csd` file was partially processed as a second-rank symmetric diffusion tensor to determine the isotropic diffusion coefficients. The intensity plots in Fig. 11 depicts the projection of the isotropic diffusion coefficients on to the three spatial dimensions.

3.6 2D{1,1,2,1,1} example

An example of a 2D{1,1,2,1,1} dataset using data from the US National Centers for Environment Information / National Oceanic and Atmospheric Administration 12 is given in Listing 12.

In this example, the value of the `dimensions` key is an array with two **LinearDimension** objects describing the two spatial dimensions, labeled as *longitude* and *latitude*, respectively. The value of the `dependent_variables` key is an array with five **ExternalDependentVariable** objects describing the surface temperature ($p_0 = 1$), the air temperature at 2 m above ground level ($p_1 = 1$), the two-component wind velocity vector at 10 m above surface ($p_2 = 2$), the relative humidity ($p_3 = 1$), and the air pressure at the sea level ($p_4 = 1$). Figure 12 depicts the intensity and quiver plots of four dependent variables.

3.7 0D{1,1} example

J_vs_s.csd

The CSD model also allows the serialization of datasets without a coordinate grid. A 0D{1,1} datasets, for example, has no dimensions, $d = 0$, and two single-component dependent variable, $p_0 = 1$ and $p_1 = 1$. The listing for such a dataset 16 is given in Listing 13. In this example, the two “correlated” dependent variables are the ^{29}Si - ^{29}Si nuclear spin couplings, 2J , across a Si-O-Si linkage and the s -character product on the

```

brain_MRI.csd
1 {
2   "csdm": {
3     "version": "1.0",
4     "timestamp": "2016-03-12T16:41:00Z",
5     "tags": ["MRI", "image", "brain", "diffusion tensor"],
6     "dimensions": [
7       {
8         "type": "linear",
9         "label": "x",
10        "quantity_name": "length",
11        "count": 148,
12        "increment": "1.0 mm"
13      },
14      {
15        "type": "linear",
16        "label": "y",
17        "quantity_name": "length",
18        "count": 190,
19        "increment": "1.0 mm"
20      },
21      {
22        "type": "linear",
23        "label": "z",
24        "quantity_name": "length",
25        "count": 160,
26        "increment": "1.0 mm"
27      }
28    ],
29    "dependent_variables": [
30      {
31        "type": "internal",
32        "quantity_type": "symmetric_matrix_3",
33        "name": "Brain MRI",
34        "encoding": "base64",
35        "numeric_type": "float32",
36        "components": [
37          "kIa/PisXXEawp+4/Pa8MQHsG... ",
38          "aCp1v7vVYcAAK0m/QpCkv2Jq... ",
39          "AAAAAAAAAAAAAAAAAAAAAFp/... ",
40          "416IwdjgZsG+I4DB1H2IwbVO... ",
41          "pjiUPyb3pD9AaKo+IJF4PoyQ... ",
42          "kIa/visXXMAwp+6/Pa8MwDn4... "
43        ],
44        "component_labels": [
45          "Dxx",
46          "Dxy",
47          "Dxz",
48          "Dyy",
49          "Dyz",
50          "Dzz"
51        ]
52      }
53    ]
54  }
55 }

```

Listing 11. JSON serialized listing of the diffusion tensor MRI dataset [\[15\]](#) of the brain containing one six-component **DependentVariable** object and three **Dimension** objects. Listing was created by the authors using data from reference [\[15\]](#).

Figure 11. The intensity plots, derived from the diffusion tensor MRI dataset in Listing 11, are the projection of the isotropic diffusion coefficients, calculated on to the three spatial dimensions. The figure was created by the authors using data from reference 15.

NCEI.csdfe

```

1 {
2   "csdm": {
3     "version": "1.0",
4     "timestamp": "2017-09-17T12:00:00Z",
5     "read_only": true,
6     "description": "Dataset from NOAA/NCEP Global
7       Forecast System (GFS) Atmospheric Model.",
8     "dimensions": [
9       {
10        "type": "linear",
11        "count": 192,
12        "increment": "0.5 degree",
13        "coordinates_offset": "264.0 degree",
14        "quantity_name": "plane angle",
15        "label": "longitude"
16      },
17      {
18        "type": "linear",
19        "count": 89,
20        "increment": "0.5 degree",
21        "coordinates_offset": "-4.0 degree",
22        "quantity_name": "plane angle",
23        "label": "latitude"
24      }
25    ],
26    "dependent_variables": [
27      {
28        "type": "external",
29        "name": "Surface air temperature",
30        "unit": "K",
31        "quantity_name": "temperature",
32        "component_labels": ["tmpsfc - surface air
33          temperature"],
34        "numeric_type": "float64",
35        "quantity_type": "scalar",
36        "components_url": "file:./surface_temp.dat"
37      },
38      {
39        "type": "external",
40        "name": "Air temperature at 2 m",
41        "unit": "K",
42        "quantity_name": "temperature",
43        "component_labels": ["tmp2m - air temperature
44          at 2m"],
45        "numeric_type": "float64",
46        "quantity_type": "scalar",
47        "components_url": "file:./air_temp_at_2m.dat"
48      },
49      {
50        "type": "external",
51        "name": "Wind velocity at 10 m",
52        "unit": "m/s",
53        "quantity_name": "speed",
54        "component_labels": ["ugrd10m - eastward wind
55          velocity at 10m", "vgrd10m - northward wind
56          velocity at 10m"],
57        "numeric_type": "float64",
58        "quantity_type": "vector_2",
59        "components_url": "file:./wind_velocity.dat"
60      },
61      {
62        "type": "external",
63        "name": "Relative humidity",
64        "unit": "%",
65        "quantity_name": "dimensionless",
66        "component_labels": ["rh2m - relative humidity
67          at 2m"],
68        "numeric_type": "float64",
69        "quantity_type": "scalar",
70        "components_url": "file:./relative_humidity.dat"
71      },
72      {
73        "type": "external",
74        "name": "Air pressure at sea level",
75        "unit": "Pa",
76        "quantity_name": "pressure",
77        "component_labels": ["prmslmsl - mean sea level
78          pressure"],
79        "numeric_type": "float64",
80        "quantity_type": "scalar",
81        "components_url": "file:./
82          sea_level_air_pressure.dat"
83      }
84    ]
85  }
86 }

```

Listing 12. JSON serialized listing of multiple dependent variables including scalar and vector on a two-dimensional grid. Listing was created by the authors using data from the US National Centers for Environment Information / National Oceanic and Atmospheric Administration 12.

Figure 12. The figure depicts (a) an intensity plot of the air temperature at 2 m above surface, (b) a quiver plot of the wind vectors at 10 m above surface, (c) an intensity plot of the relative humidity, and (d) an intensity of the air pressure at sea level corresponding to the last four dependent-variables from Listing 12. These plots are overlaid on the coastline map of the Earth corresponding to the latitude and longitudes. These coastline were rendered using the Matplotlib Basemap toolkit 13. The plots were generated using the Matplotlib library 14 for python. The figure was created by the authors using data from reference 12.

O and two Si along the Si-O bond across the Si-O-Si linkage 16. The value of the dependent_variables key is an array with two JSON serialized 595
InternalDependentVariable object (lines 7-16 and 17-27). The first object, named as 596
Gaussian computed J-couplings, describes the 2J couplings. The data values are stored 597
as a Base64 string in the components key. The Base64 decoded binary array is 598
interpreted as a 32-bit floating-point numerical array following the value of the 599
numeric_type key. The second object is named as the product of s-characters. Here, the 600
data values are again stored as a Base64 string, which after decoding is interpreted as a 601
32-bit floating-point numerical array. A scatter plot revealing the correlation between 602
the two dependent variables from the dataset in Listing 13 is presented in Fig. 13. 603
604

4 Conclusions 605

We have designed the Core Scientific Dataset (CSD) Model as a lightweight, portable, 606
versatile, resourceful, and standalone data model that is capable of handling 607
multi-dimensional and correlated datasets from various spectroscopies, diffraction, 608
microscopy, and imaging techniques. A guiding principle in the design of this model was 609
to encapsulate only the minimal metadata necessary to represent the correlated datasets 610
sampled on a common orthogonal coordinate grid. The model also allows for sparse 611
sampling on this grid. Throughout the model, we make use of the ScalarQuantity class, 612
which is composed of a numerical value and any valid SI unit symbol or any number of 613
accepted non-SI unit symbols. This approach enables tremendous flexibility in allowing 614
the dataset model to be agnostic of the scientific domain. Historically, this may have 615
been perceived as a potential barrier to software implementation of the CSDM, however, 616
in recent years libraries capable of parsing units have become freely available for various 617
computing environments such as Matlab, Mathematica, and python. The CSD model is 618
independent of the hardware, operating system, application software, and 619
file-serialization method used for data exchange. The model provides a mechanism for 620
the inclusion of additional application-specific metadata without compromising its 621
fundamental role as a data exchange and archiving standard. When serialized using 622
JSON serialization the resulting file format is human readable and integrable with most 623
object-oriented programming languages and software. The serialization of the CSD 624
model has been adopted as an open dataset file format in NMR software development 625
under our control, i.e., SIMPSON 17,18, DMFIT 19, jsNMR 20, and RMN 21, 626
which already have a large installed user base within the solid-state NMR scientific 627
community. We envision the CSD model and its associated file format as playing an 628
important role in community accessible databases and in greater data-trail integrity and 629
compliance issues for many research laboratories. 630

```

J_vs_s.csd
1 {
2   "csdm": {
3     "version": "1.0"
4     "timestamp": "2016-03-12T16:41:00Z",
5     "tags": ["magnetic resonance", "29Si", "nuclear J coupling", "computational
6       chemistry", "silicates"],
7     "dependent_variables": [
8       {
9         "type": "internal",
10        "name": "Gaussian computed J-couplings ",
11        "unit": "Hz",
12        "component_labels": ["J-coupling"],
13        "quantity_type": "scalar",
14        "numeric_type": "float32",
15        "encoding": "base64",
16        "components": ["Btjvv1/vtr/+ ... w2TJQYV80EE="]
17      },
18      {
19        "type": "internal",
20        "name": "product of s-characters",
21        "unit": " %",
22        "component_labels": ["s-character product"],
23        "quantity_type": "scalar",
24        "numeric_type": "float32",
25        "encoding": "base64",
26        "components": ["xIJYP6N5Wj+6 ... +ovDP3m0wz8="]
27      }
28    ]
29  }
30 }

```

Listing 13. JSON serialized listing of quantum chemistry calculation of nuclear spin-spin coupling constant between ^{29}Si nuclei across a Si-O-Si linkage in small cluster molecule. An example dataset with two **DependentVariable** objects and no **Dimension** objects. The listing was created by the authors using data from reference [16](#).

Figure 13. Two dependent variables [16](#) correlating $^2J_{\text{Si-O-Si}}$ couplings to the corresponding product of *s*-characters on the Si, O and Si atoms along the Si-O bond across the Si-O-Si linkage. The figure was created by the authors using data from reference [16](#).

Appendix

631

Scaled variables

632

Coordinates along a dimension can also be converted into scaled quantities based on other attributes in the **Dimension** object or in application meta-data. For example, in nuclear magnetic resonance spectroscopy, the spectra are conventionally plotted as a function of a dimensionless frequency ratio. In CSD model, the `origin_offset`, o_k , is interpreted as the NMR spectrometer frequency and the `coordinates_offset`, b_k , as the reference frequency. Given the dimension coordinate, \mathbf{X}_k , from Eq. (3), the corresponding dimensionless-coordinate ratio follows,

633

634

635

636

637

638

639

$$\mathbf{X}_k^{\text{ratio}} = \frac{\mathbf{X}_k}{o_k - b_k}. \quad (9)$$

csdmpy

640

The `csdmpy` module is the Python support for the core scientific dataset (CSD) model file-exchange format. The source code is available at <https://github.com/DeepanshS/csdmpy> and the corresponding documentation at <https://csdmpy.readthedocs.io/en/stable>, which includes links for downloading the CSDM compliant files used in this report.

641

642

643

644

645

The main objective of this python module is to facilitate the import and export of the CSD model serialized files for Python users. Moreover, the module utilizes Python libraries such as Numpy and therefore allowing the end-users to process or visualize the imported datasets with any third-party package(s) compatible with Numpy.

646

647

648

649

Supporting Information

650

Supporting information contains additional csdf examples and a review of SI Units and constants as used in the CSD model.

651

652

Author Contributions Statement

653

P.J.G. conceived the idea. All authors contributed to the design of the CSD model and wrote codes. D.J.S. and P.J.G. prepared the figures and wrote the main manuscript text. All authors reviewed the manuscript.

654

655

656

Acknowledgments

657

The diffusion tensor MRI Brain dataset [15] is courtesy of Gordon Kindlmann at the Scientific Computing and Imaging Institute, University of Utah, and Andrew Alexander, W. M. Keck Laboratory for Functional Brain Imaging and Behavior, University of Wisconsin-Madison.

658

659

660

661

This material is based upon work supported in part by the US National Science Foundation under Grant No. DIBBS OAC 1640899. T.V. acknowledges financial support from the European Commission (H2020 Future and Emerging Technologies Grant 731475 and Research Infrastructures Grant 731005). Early support for this work came from the Le Studium Loire Valley Institute for Advanced Studies, Orléans, France.

662

663

664

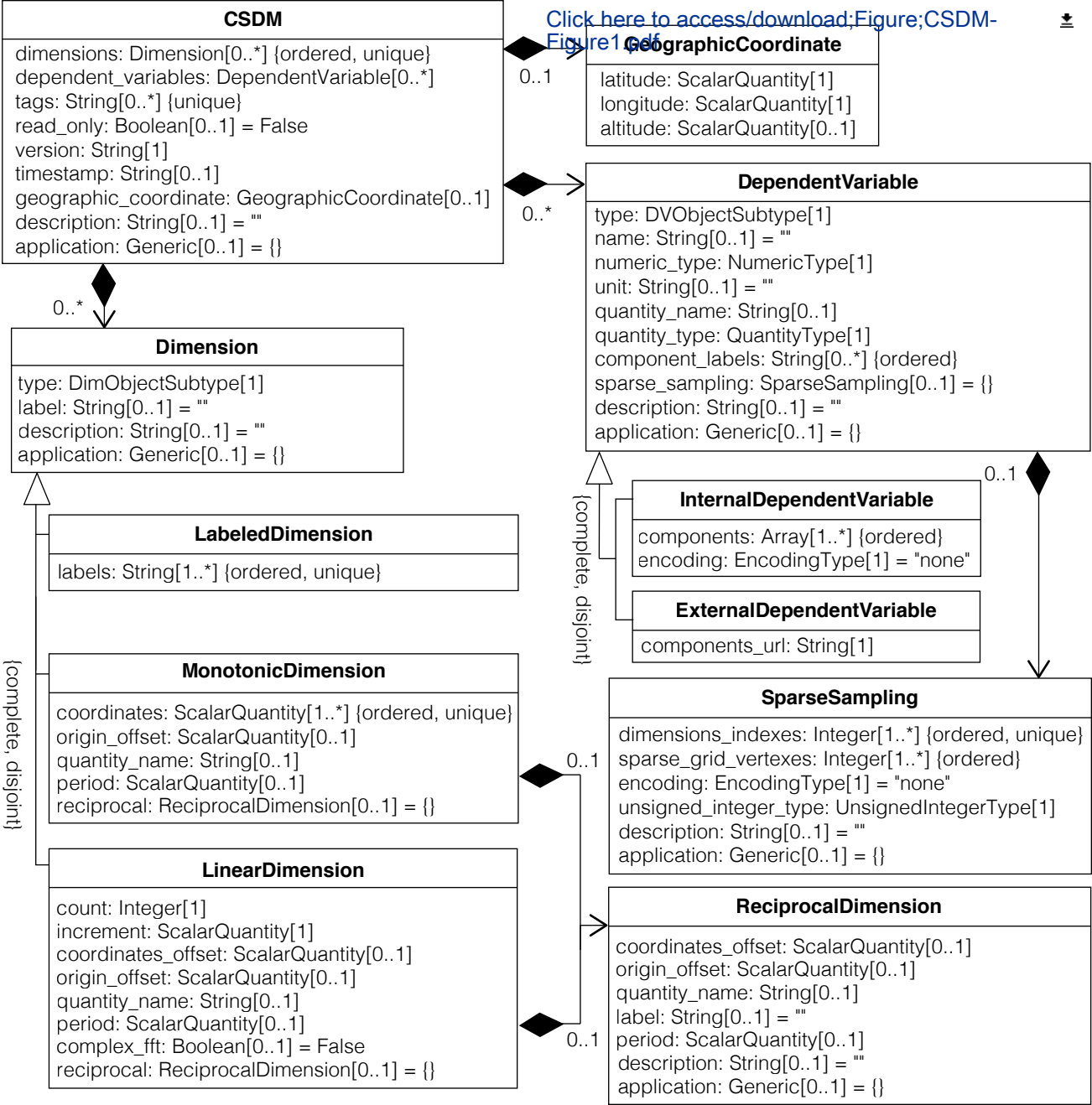
665

666

References

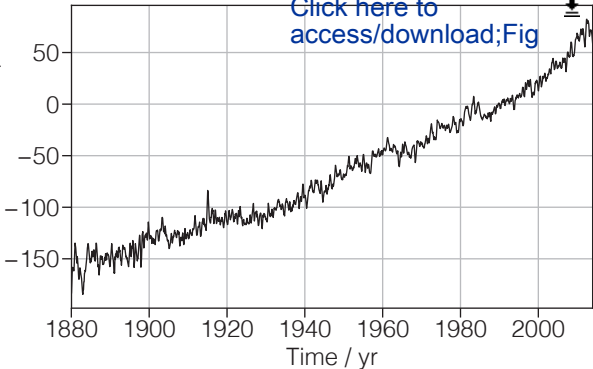
1. Fowler M. UML Distilled, A Brief Guide to the Standard Object Modeling Language. Boston: Addison-Wesley; 2004.
2. ECMA. Standard ECMA-404: The JSON Data Interchange Syntax. 2017;.
3. Thompson A, Taylor BN. Guide for the use of the International System of Units (SI). 2008;.
4. (w3c) W3C. Architecture of the World Wide Web, Volume One. 2004;.
5. PythonWare. Python Imaging Library (PIL); Available from: <http://www.pythonware.com/products/pil/>.
6. Collaboration A, Robitaille TP, Tollerud EJ, Greenfield P, Droettboom M, Bray E, et al. Astropy: A community Python package for astronomy. *aap*. 2013;558:A33. doi:10.1051/0004-6361/201322068.
7. van der Walt S, Colbert SC, Varoquaux G. The NumPy Array: A Structure for Efficient Numerical Computation. *Computing in Science & Engineering*. 2011;13:22 – 30. doi:10.1109/MCSE.2011.37.
8. Church JA, White NJ. Sea-Level Rise from the Late 19th to the Early 21st Century. *Surveys in Geophysics*. 2011;32:585–602. doi:10.1007/s10712-011-9119-1.
9. Cardona A, Saalfeld S, Preibisch S, Schmid B, Cheng A, Pulokas J, et al. An Integrated Micro- and Macro architectural Analysis of the Drosophila Brain by Computer-Assisted Serial Section Electron Microscopy. *PLoS Biology*. 2010;8:e1000502. doi:10.1371/journal.pbio.1000502.
10. The Hubble Heritage Project. 2016;.
11. Balsgart NM, Vosegaard T. Fast Forward Maximum entropy reconstruction of sparsely sampled data. *J Magn Reson*. 2012;223:164 – 169. doi:10.1016/j.jmr.2012.07.002.
12. ERDDAP: Marine Domain Awareness (MDA) ERDDAP Server - JRC Italy;.
13. Whitaker J. Matplotlib Basemap Toolkit; 2011. Available from: <https://matplotlib.org/basemap/>.
14. Hunter JD. Matplotlib: A 2D Graphics Environment. *Computing in Science & Engineering*. 2007;9:90 – 95. doi:10.1109/MCSE.2007.55.
15. Diffusion tensor MRI datasets; 2000. Available from: <http://www.sci.utah.edu/~gk/DTI-data/>.
16. Srivastava DJ, Florian P, Baltisberger JH, Grandinetti PJ. Correlating geminal $^2J_{\text{Si-O-Si}}$ couplings to structure in framework silicates. *Phys Chem Chem Phys*. 2018;20:562 – 571. doi:10.1039/C7CP06486A.
17. Bak M, Rasmussen JT, Nielsen NC. SIMPSON: A General Simulation Program for Solid-State NMR Spectroscopy. *J Magn Reson*. 2000;147:296–330. doi:10.1006/jmre.2000.2179.
18. Tošner Z, Andersen R, Stevansson B, Edén M, Nielsen NC, Vosegaard T. Computer-intensive simulation of solid-state NMR experiments using SIMPSON. *J Magn Reson*. 2014;246:79–93.

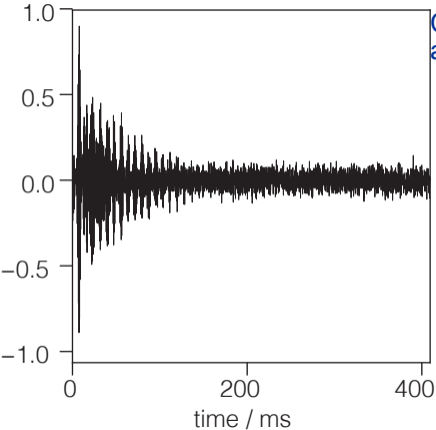
19. Massiot D, Fayon F, Capron M, King I, Le Calvé S, Alonso B, et al. Modelling one- and two-dimensional solid-state NMR spectra. *Magn Reson Chem.* 2002;40:70 – 76. doi:10.1002/mrc.984.
20. Vosegaard T. jsNMR: an embedded platform-independent NMR spectrum viewer. *Magn Reson Chem.* 2015;53:285 – 290. doi:10.1002/mrc.v53.410.1002/mrc.4195.
21. PhySy Ltd . RMN 2.0; 2019. Available from: <https://www.physyapps.com/rmn>



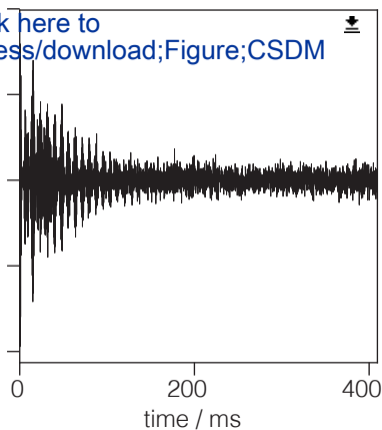
Global Mean Sea Level / mm

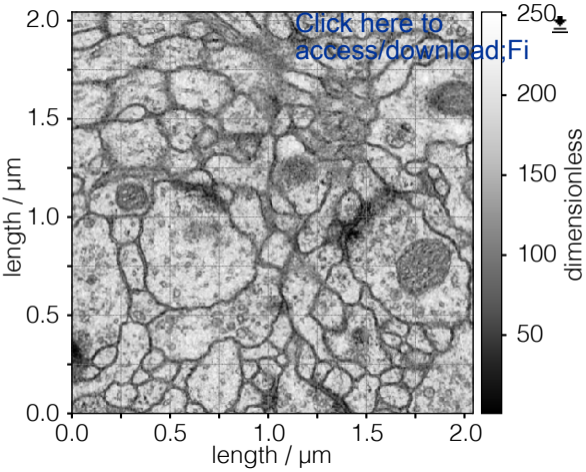
[Click here to access/download;Fig](#)





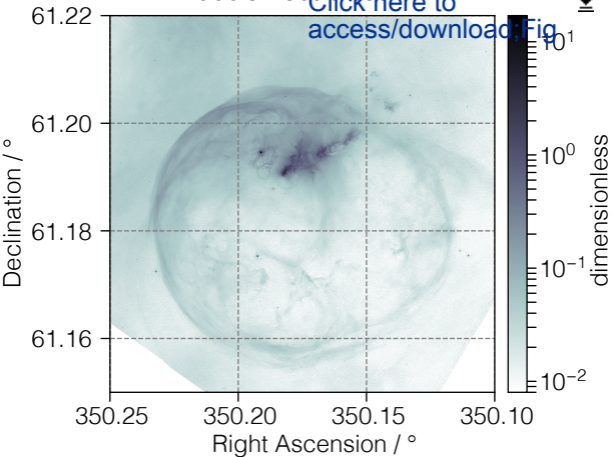
[Click here to access/download;Figure;CSDM](#)



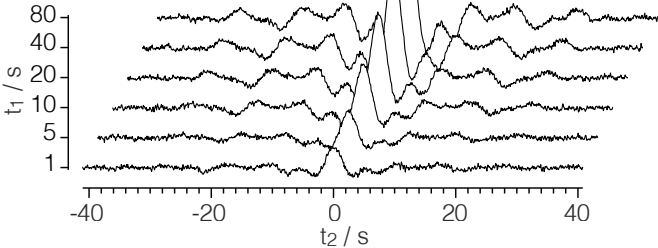


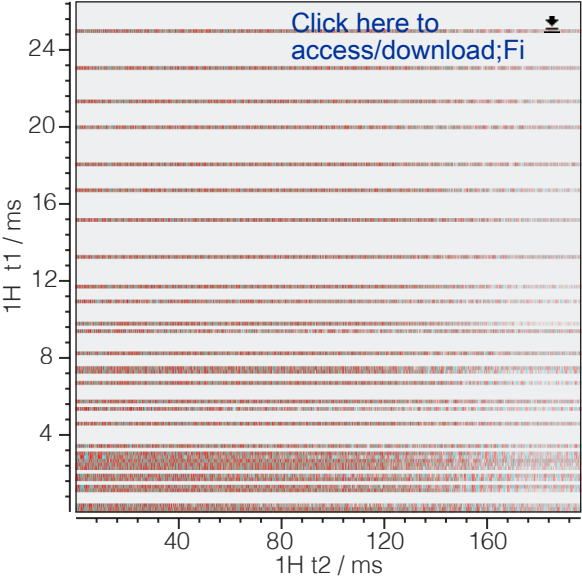
Bubble Nebula 656nm

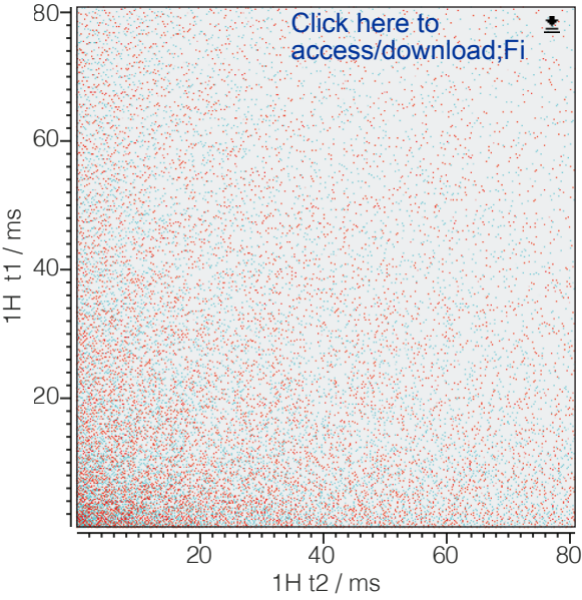
[Click here to access/download;Fig](#)

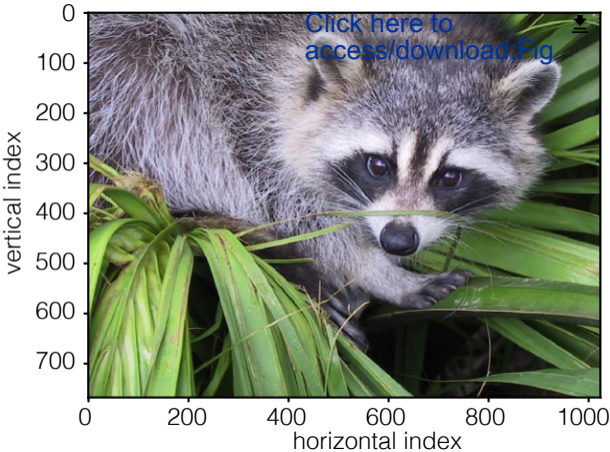


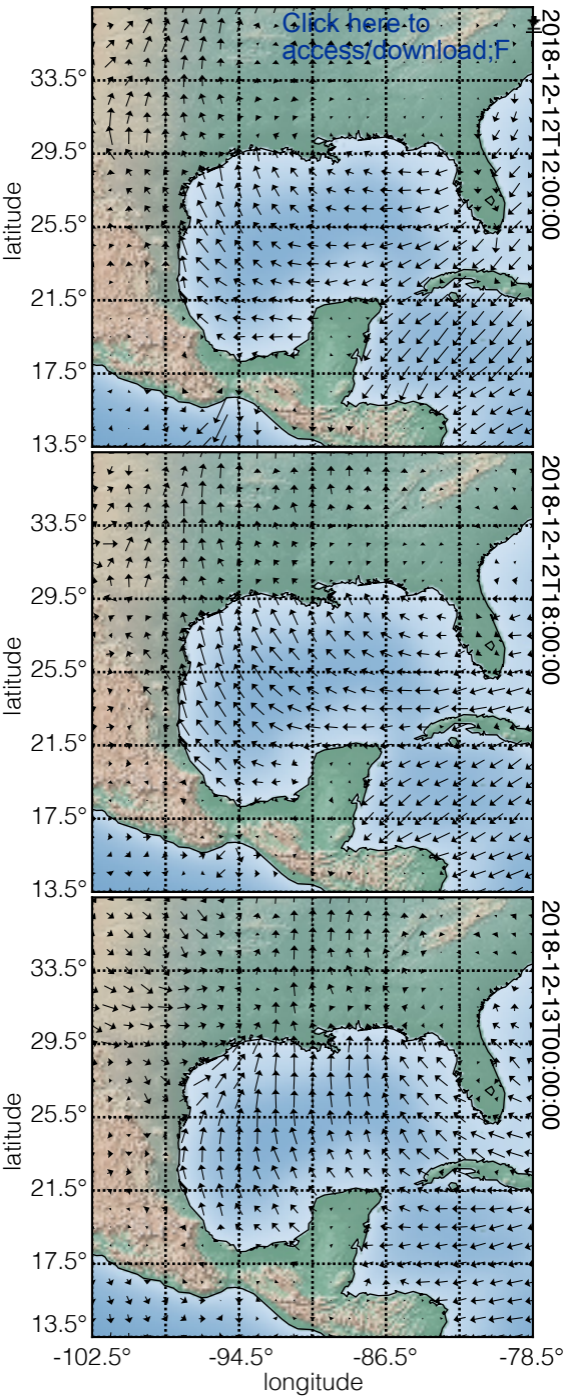
[Click here to access/download;Figur](#)

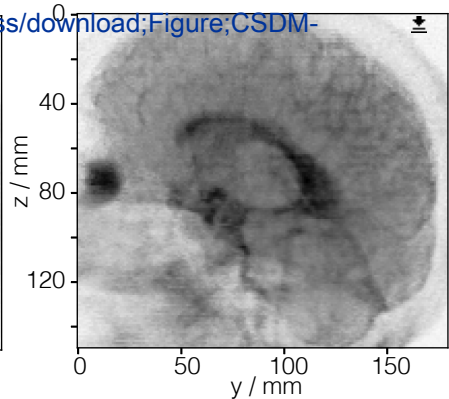
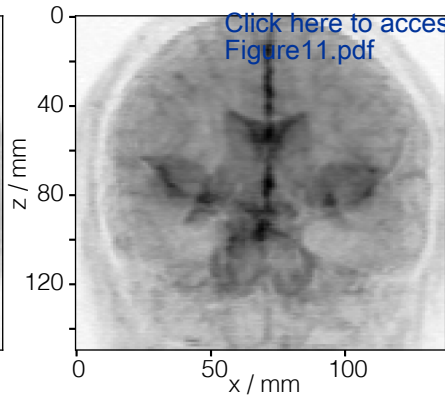
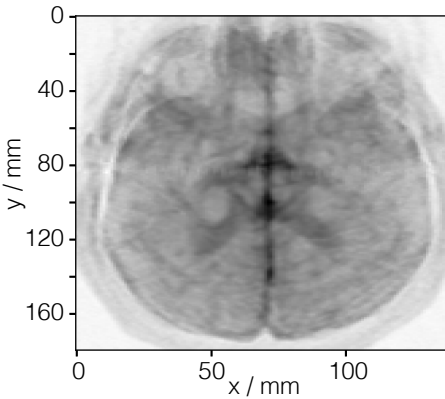




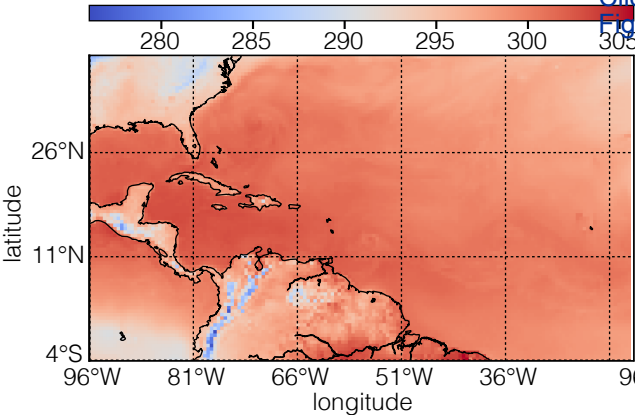




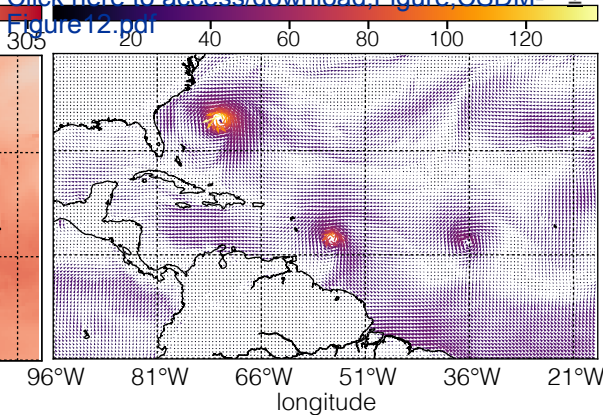




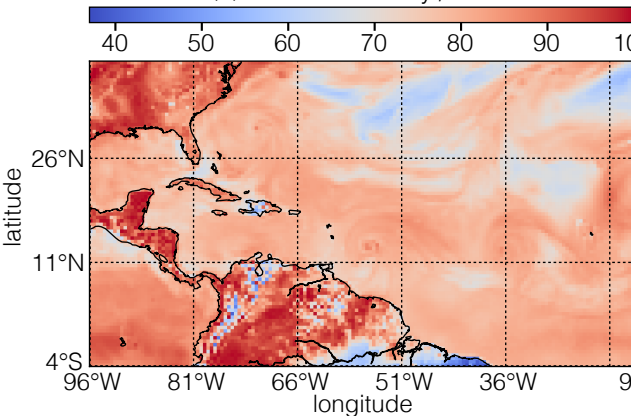
(a) Air temperature at 2 m / K



Click here to access/download/Figure_CSDM-
Figure 12.pdf



(c) Relative humidity / %



(d) Air pressure at sea level / atm

