



**HAL**  
open science

## Present and future distribution modeling of *Pinus sylvestris* and *Betula pubescens* within the reindeer pastures of the Gabna sameby (Sweden)

Malé Kital, Romain Courault, Marianne Cohen

### ► To cite this version:

Malé Kital, Romain Courault, Marianne Cohen. Present and future distribution modeling of *Pinus sylvestris* and *Betula pubescens* within the reindeer pastures of the Gabna sameby (Sweden). Arctic Week 2019, Ministère de l'Europe et des Affaires Etrangères, Paris, Dec 2019, Paris, France. hal-02409615

**HAL Id: hal-02409615**

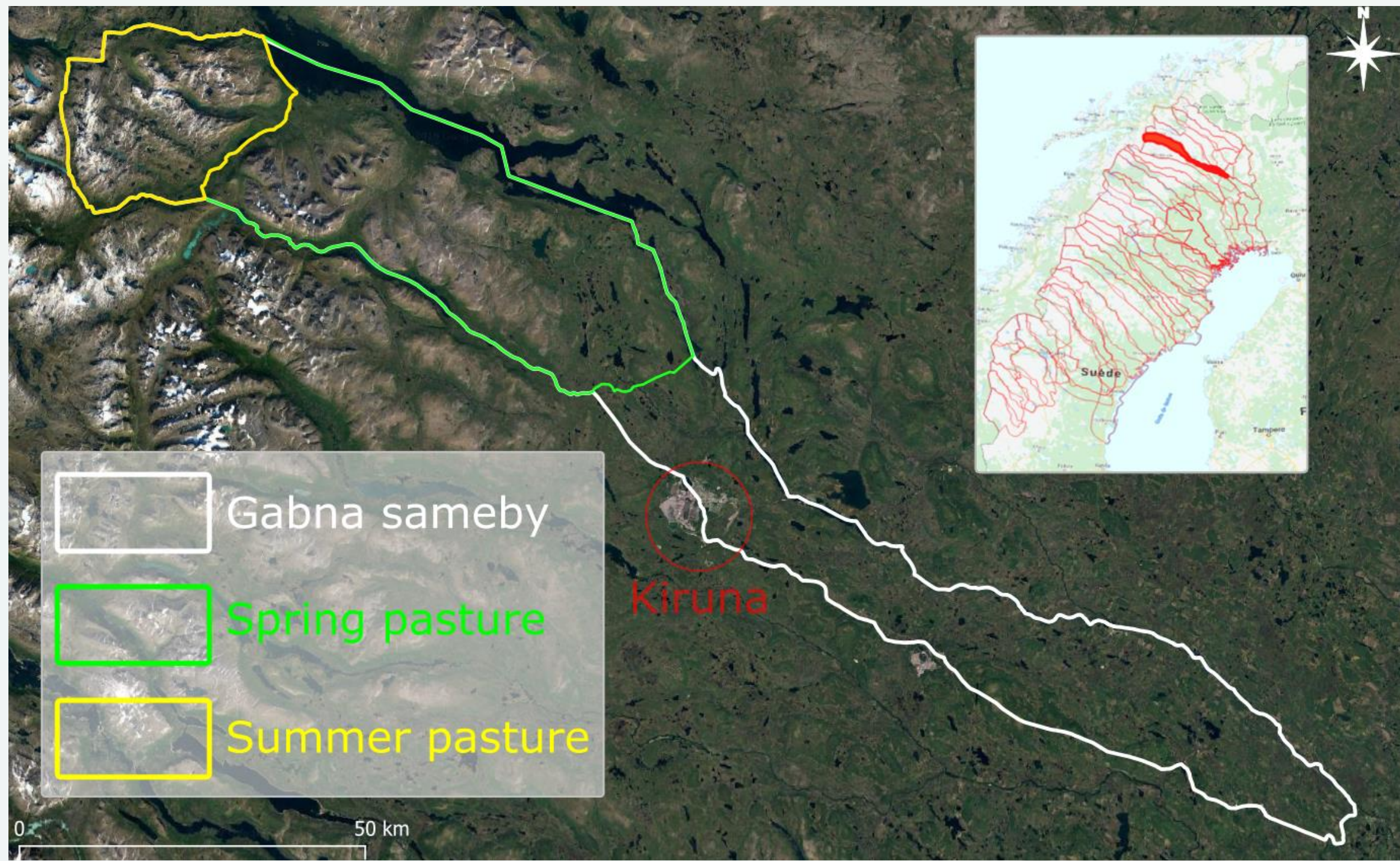
**<https://hal.science/hal-02409615>**

Submitted on 13 Dec 2019

**HAL** is a multi-disciplinary open access archive for the deposit and dissemination of scientific research documents, whether they are published or not. The documents may come from teaching and research institutions in France or abroad, or from public or private research centers.

L'archive ouverte pluridisciplinaire **HAL**, est destinée au dépôt et à la diffusion de documents scientifiques de niveau recherche, publiés ou non, émanant des établissements d'enseignement et de recherche français ou étrangers, des laboratoires publics ou privés.





## Material and method:

1



### Material

- Gabna reindeer herders summer/spring pastures (RenGIS 2.0, Sametinget)
- Interpolated and simulated TMIN/TMAX (CHELSA-CLIMATE 1979-2013; RCP 8.5; 2061-2018)
- Corine Land Cover 2012 (EEA)
- Floristic surveys (Courault, 2018)

2



### Preprocessing

- Clipping climatic datasets on summer/spring pastures
- Re-projecting outputs (WGS 84 - UTM 34N)

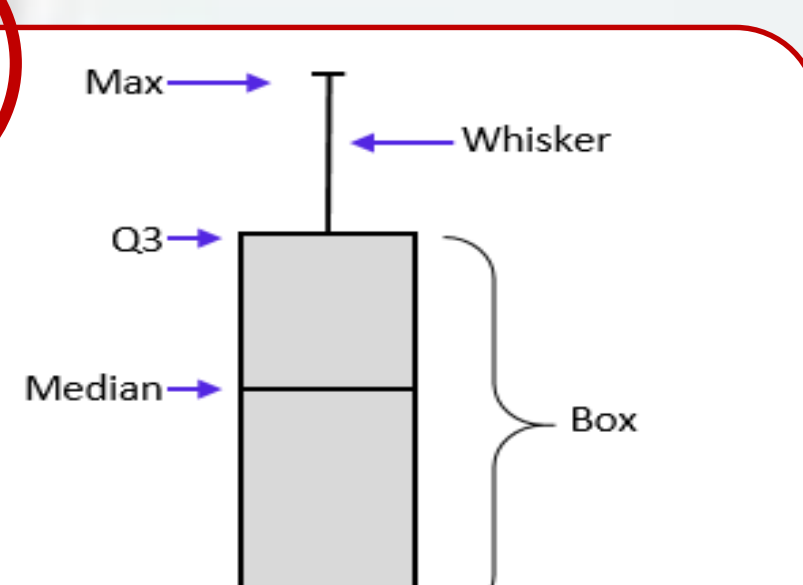
## Introduction:

The increasing bioclimatological variability in northern Sweden questions the resilience of pastoral landscapes belonging to the Gabna reindeer herding (Lundqvist, 2008 ; Riseth, Tømmervik et al., 2011).

Driven by the increase of temperatures, the spread of woody species (Scot pine and Montane birch) along the taiga-tundra ecotone might be one more difficulty for reindeer grazing in spring and summer, due to competition with graminoids and terricolous lichens (~ 75% in species diversity of the reindeer' annual diet, Lefrère, 2003)

Strictly based on summer temperatures, we want here to map the potential distribution of *Pinus sylvestris* (Scot pine) and *Betula pubescens* (Montane birch), confront it with their observed distribution for the present, and then mapping their future extent according to pessimistic future projections (CMIP5, RCP 8.5).

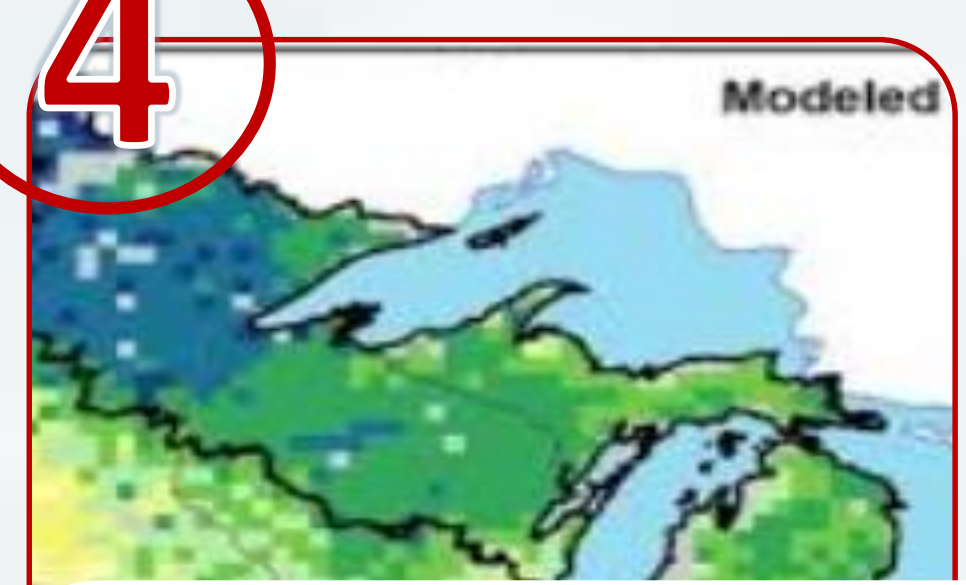
3



### Selecting future projection of T°C

- Extraction of TMIN/TMAX by location of floristic surveys
- Selection of the median of the CMIP5 scenario (e.g. CMCC-CM)

4

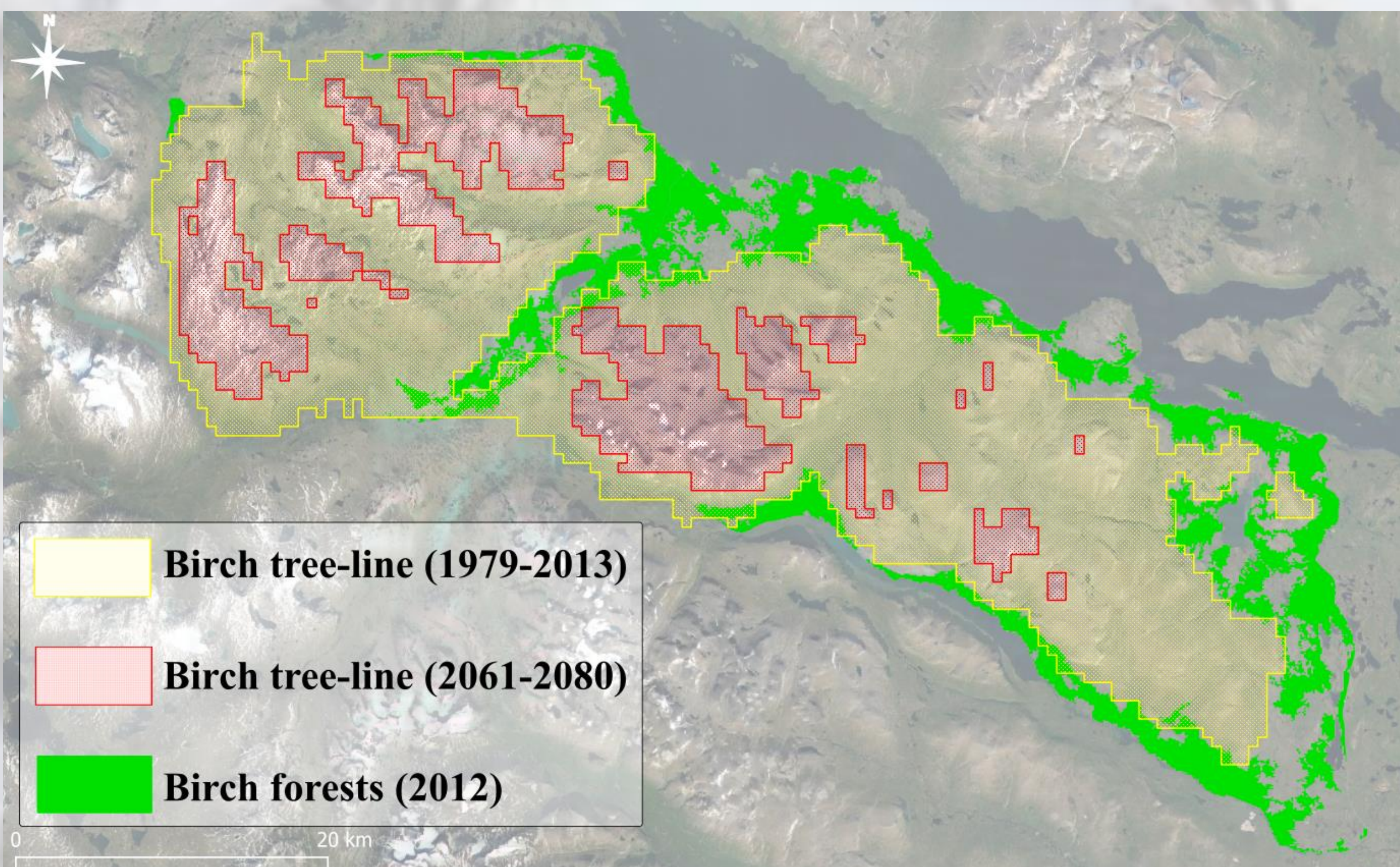


### Specie thermic threshold selection and post-processing

- Reclassifying according to Mountain birch and Scots Pine thermic limiting factor (e.g. 15.8°C TMAX of July; 10°C TMIN of July)
- Quantifying areas of potential presence/absence and maps

## Results (1)

## Results (2)



Observed broad-leaved forests surface area (Corine 2012)	Modeled present mountain birch surface area (1979-2013)	Modeled future mountain birch surface area (2060-2081)	Observed coniferous forests surface areas (Corine 2012)	Modeled present scots pine surface area (1979-2013)	Modeled future scots pine surface area (2060-2081)
431 km <sup>2</sup>	896 km <sup>2</sup>	1909 km <sup>2</sup>	8 km <sup>2</sup>	1521 km <sup>2</sup>	2180 km <sup>2</sup>
19 %	40 %	85 %	0,4 %	68 %	98 %
Total area: 2231,8 km <sup>2</sup>					

**References:** Lundqvist, 2008, Reindeer husbandry in a climate change, SLU; Riseth, Tømmervik et al., 2011, Sámi traditional ecological knowledge as a guide to science: snow, ice and reindeer pasture facing climate change. Polar Record, 47(3), pp.202-217; Lefrère 2003, Variations saisonnières des activités diurnes et interactions sociales des rennes semi-domestiques Rangifer tarandus tarandus L. en Laponie finlandaise: méthodes de gestion traditionnelle et moderne de l'élevage. Thèse de doctorat, Uni Paris V; Courault, 2018 Les paysages culturels de l'élevage de rennes en Scandinavie face au changement global, une approche multi-scalaire (Laponie suédoise, sud norvégien), Thèse de doctorat, Uni Paris IV

**Contacts:** jeankital@yahoo.fr ; courault.romain@gmail.com; marianne.cohen@sorbonne-universite.fr