



HAL
open science

Comparison of energy-, pressure- and enthalpy-based approaches for modeling supercritical flows

Guilhem Lacaze, Schmitt Thomas, Anthony Ruiz, Joseph C Oefelein

► **To cite this version:**

Guilhem Lacaze, Schmitt Thomas, Anthony Ruiz, Joseph C Oefelein. Comparison of energy-, pressure- and enthalpy-based approaches for modeling supercritical flows. *Computers and Fluids*, 2019, 181, pp.35-56. 10.1016/j.compfluid.2019.01.002 . hal-02409206

HAL Id: hal-02409206

<https://hal.science/hal-02409206>

Submitted on 18 Dec 2020

HAL is a multi-disciplinary open access archive for the deposit and dissemination of scientific research documents, whether they are published or not. The documents may come from teaching and research institutions in France or abroad, or from public or private research centers.

L'archive ouverte pluridisciplinaire **HAL**, est destinée au dépôt et à la diffusion de documents scientifiques de niveau recherche, publiés ou non, émanant des établissements d'enseignement et de recherche français ou étrangers, des laboratoires publics ou privés.

Comparison of energy-, pressure- and enthalpy-based approaches for modeling supercritical flows

Guilhem Lacaze^{a,*}, Thomas Schmitt^b, Anthony Ruiz^a, Joseph C. Oefelein^c

^a*Sandia National Laboratories, Livermore, CA, 94550, USA*

^b*Laboratoire EM2C, CNRS, Ecole CentraleSupélec, Université Paris-Saclay, 3 rue Joliot Curie, 91192 Gif-sur-Yvette cedex, France*

^c*Daniel Guggenheim School of Aerospace Engineering, Georgia Institute of Technology, Atlanta, GA, 30332, USA*

Abstract

At supercritical conditions, thermodynamics may become strongly nonlinear which is reflected by large thermodynamic Jacobian values. This means that small variations in density, momentum or energy can result in large pressure perturbations. Because of such nonlinearities, simulations of high-pressure flows are subject to stability issues when the conservative form of the Navier-Stokes system is employed. In high-Reynolds number simulations, transported quantities are altered by numerical scheme errors, stabilization methods and filtering procedures. These alterations affect density and energy independently and may lead to significant pressure oscillations due to the nonlinear behavior of the equation of state. The objective of the present work is to compare three methods based on different sets of transport equations, to measure their impact on pressure and mixing temperature. A classical fully-conservative approach based on the transport of internal energy is compared to two quasi-conservative methods: a pressure-based and an enthalpy-based formulation. A suite test cases of increasing complexity is employed to expose the main differences between these approaches, at conditions relevant for engineering applications. The analysis first confirmed that the energy-based formulation is prone to artificial pressure fluctuations caused by the interaction between thermodynamic nonlinearities

*Corresponding author

Email address: guilhem.lacaze@gmail.com (Guilhem Lacaze)

and the numerical dissipation introduced by the stabilization scheme. It is also demonstrated that despite the stability properties of the pressure-based formulation, the mixing temperature is not properly captured since the pressure equation is not used in its conservative form. The enthalpy-based approach however, offers an improved representation of the mixing thermodynamic state while avoiding non-physical pressure variations.

Keywords: Supercritical Flow, Spurious Oscillations, Numerical Stability, Numerical Dissipation, Pressure-Based Equations, Enthalpy-Based Equations

1. Introduction

Propulsion and transportation systems (e.g., liquid rocket, gas turbine, and diesel engines) rely on high-pressure operating conditions to enhance performance. In these devices, the fuel or oxidizer are injected as a liquid into a highly turbulent gaseous environment for efficient mixing. At low pressure, this process induces classical atomization coupled with evaporation where the interface between the liquid and the gas has a thickness on the order of the molecular scale. At high pressure, the gas-liquid interactions can dramatically change. Molecules of the gas are packed tighter against the liquid interface and inter-molecular forces between “gas” and “liquid” phases are no longer negligible. This yields a diminution of the surface-tension and a thickening of the interface until it becomes diffuse and continuous [1, 2]. Mixing between dense and light fluids does not result in the creation of drops and ligaments. Instead, diffusion dominated mixing occurs in presence of a large density gradient. A comprehensive review on the effect of high-pressure nonlinearities in practical systems has been performed by Oschwald *et al.* [3]. For a pure species, this change occurs when the pressure rises above the critical pressure. Thermodynamic conditions are then called supercritical with respect to pressure. In the case of a mixture, the change in the thermodynamics is more difficult to predict since the transition locus cannot be directly determined from the critical points of the species of the mixture. Dahms and Oefelein [4] used linear gradient the-

ory to investigate this process in propulsion applications. They showed that residual surface tension can still be measured above the critical points of the species in presence (also observed experimentally, for example by Woodward *et al.* [5]), and that high-pressure diffusion dominated mixing can be expected in real engineering systems. In these systems, the term transcritical mixing is often used to characterize the dynamics that occurs between two fluids, one at subcritical temperature and the other one at supercritical temperature, since conditions cross the pseudo-boiling line [3].

The lack of a comprehensive understanding of mixing under supercritical conditions has stimulated significant modeling efforts to complement experimental and theoretical research. A major difficulty, however, is the capability of numerical solvers to maintain accuracy and stability in regions of large gradients in density and thermodynamic quantities. This aspect is the focal point of the present work. Because of strong thermodynamic non-linearities in the vicinity of pseudo boiling line, small variations of density and/or energy may generate pressure oscillations. In high-Reynolds and high-pressure simulations, stabilization schemes are often required to handle strong field gradients. Density, energy and other transported quantities are then independently dissipated, and may become “thermodynamically misaligned”. This means that due to non-linearities in the equation of state, the reconstructed pressure $P(\bar{\rho}, \bar{\rho e}, \bar{\rho Y}_k)$ may differ from the real physical pressure (this issue is illustrated in Section 2) and may result in artificial pressure variations. These non-physical oscillations can deteriorate the predictions accuracy or lead to the divergence of the calculation. This has been previously reported by Hickey *et al.* [6], Terashima and Koshi [7], Kawai *et al.* [8] and Schmitt *et al.* [9]. In Reynolds Average Navier Stokes (RANS) simulations, gradients are diffused and well resolved which minimizes the problem [10, 11, 12, 13, 14, 15, 16, 17]. In Direct Numerical Simulations (DNS), grid resolution is selected to resolve all scales, which also circumvents the issue. For example, Bellan and co-workers have studied temporal mixing layers under supercritical conditions using sixth- to eighth- order accurate central finite differences for spatial derivative along with a filtering step (eighth- to

tenth-order) [18, 19, 20, 21, 22, 23]. Other researchers have employed similar approaches [24, 25, 26].

55 Large Eddy Simulation (LES) applied to high-pressure systems is more prone to this problem since the Reynolds numbers of simulated flows are usually greater than in DNS and coarser grids are employed. Different strategies have been tried to mitigate the stability issue. Many researchers have used dense grid resolution to limit discretization errors in gradient regions. This approach
60 requires large computational resources and are usually applied to small scale computational domains such as splitter plates [27, 28], supercritical jets [29, 30], mixing layers [31, 32] and single rocket injectors [33, 34, 35]. Others have employed various dissipation techniques to diffuse gradients and attain sufficient resolution in gradient zones. Dissipative convective schemes have been used,
65 several of them derived from shock-capturing approaches. In the simulations of Oefelein *et al.* [27] and more recently in [36, 37, 38, 30], spatial discretization is based on a high-order flux differencing technique coupled with a total-variation-diminishing (TVD) scheme. Matsuyama *et al.* [39, 34] used second- and third-order MUSCL schemes and Smith *et al.* [40] stabilized their simulation with a
70 second-order approximate Riemann solver. Hickey *et al.* [6] used a second-order accurate Essentially Non-Oscillating (ENO) scheme which was switched to a first-order upwind scheme in gradient regions. Similar approach have been used by Park *et al.* [41], Muller *et al.* [42] and Matheis *et al.* [43]. Dissipation was also introduced via artificial diffusion schemes. This latter approach has been
75 employed by Meng and Yang [44] and recently by Masquelet *et al.* [45], Yang *et al.* [46, 47]. More advanced artificial viscosity methods have also been derived by Terashima *et al.* [48] and Zong *et al.* [49, 50, 51, 52, 28] which combines second and fourth order dissipation operators as well as bulk viscosity. Recently, Schmitt *et al.* [9, 53, 54] showed that to limit the creation of nonphysical os-
80 cillations, the thermodynamic balance between density, species momentum and energy must be preserved. To do so, they derived a non-conservative form that calculates the amount of dissipation needed on energy, given the dissipation on density and species mass-fraction to obtain $P_{mechanical} \approx P_{eos}(\bar{\rho}, \bar{\rho e}, \bar{\rho Y_k})$,

where $P_{mechanical}$ is the pressure used in the transport equations and P_{eos} is the
85 pressure derived from the thermodynamic scheme. This method has recently
been used in multiple rocket-like configurations to investigate combustion and
acoustic instabilities [9, 55, 56, 57]. Ma *et al.* [58] have extended the double-
flux method to real fluid thermodynamics by imposing the same heat capacity
in adjacent cells when fluxes are constructed. This approach is no longer en-
90 ergy conservative but eliminates non-physical pressure oscillations when large
gradients are present in the flow. Other groups have tabulated thermodynamic
quantities and derivatives to eliminate errors created when thermodynamics
parameters and Jacobians are estimated numerically.

This approach provides some improvements but does not totally alleviate the
95 issue [29, 59, 8]. Taşkinoglu and Bellan [60] and Selle *et al.* [61] have conserved
all terms usually neglected when the Navier-Stokes equation system is filtered
to build the LES transport framework. They identified additional subgrid-scale
terms to correct the error produced when pressure is evaluated from filtered
quantities. However, they showed that the accuracy of the subgrid-scale mod-
100 els for pressure rapidly deteriorates when the mesh is coarsened compared to
DNS. An efficient approach to eliminate the spurious pressure oscillations is to
directly transport pressure through a quasi-conservative system. Karni [62] pi-
oneered this research direction and successfully implemented a pressure-based
(PB) solver for multicomponent gaseous flow. Terashima and Koshi [7, 63]
105 extended this approach to supercritical conditions. These developments have
since then been used by other researchers [64, 65]. A recent energy conservative
strategy for the Van Der Waals equation of state has been proposed by Pantano
et al. [66]. In this work a new variable that separates the evolution of the non-
linear part of the density in the equation of state is added to the flow model
110 resulting in an oscillation free solution.

Despite the number of studies dedicated to suppressing nonphysical pres-
sure oscillations at high-pressure conditions, a comprehensive comparison be-
tween conservative and non-conservative approaches still needs to be performed.
Terashima *et al.* [48], Terashima and Koshi [7] and Kawai *et al.* [8] only used

115 pure advection tests to compare classical (conservative) and pressure-based ap-
proaches. Their conclusions were that less dissipation is needed with the latter
since simulations were globally more stable. Matheis *et al.* [65] used a fully
conservative approach and a pressure-based formulation to simulate a turbu-
lent nitrogen jet, mixing into a quiescent gaseous hydrogen environment. Given
120 the complexity of the configuration, only general observations were made. Less
pressure fluctuations were observed when the pressure-based formulation was
employed, along with a delay in the destabilization of the dense core. Signifi-
cant temperature differences were also detected but the origin was not identified.

The purpose of the present work is to perform a systematic comparison
125 between three different approaches that differ by the set of transported quan-
tities. Particular emphasis is placed on their impact on pressure and mixing
temperature. The classical fully-conservative “energy-based” approach (EB)
is considered as a reference where density, energy, momentum and species are
transported. The second approach is a pressure-based approach (PB) where
130 density, pressure, momentum and species are the transported quantities. Fi-
nally, a new approach is proposed, called enthalpy-based approach (HB), where
two transport equations for pressure and total energy are combined to estimate
the spatio-temporal evolution of enthalpy, along with equations on density, mo-
mentum and species. These three approaches are tested within the same solver
135 using the same numerical methods and physical models. This is accomplished
using a sequence of canonical cases that isolate specific aspects of numerics and
turbulent mixing under high-Reynolds numbers and elevated pressures.

The paper is organized as follows. Section 2 provides an explanation of the
numerical challenges present in high-pressure, high- density flow simulations.
140 This is followed by Section 3 which describes the three approaches and provides
details on their derivations. The same section presents the associated models and
numerics of the flow solver. Finally, Section 4 presents comparisons of the three
approaches on canonical, advection, one-dimensional shock, and vortex-interface
test cases. The analysis concludes on a more realistic case of a $Re = 500,000$
145 mixing layer mimicking flow conditions present at the exit of a rocket coaxial

injector.

2. Thermodynamic non-linearities and numerical challenges

At elevated pressures intermolecular forces become significant, which modifies the relationship between pressure, density, and temperature. In order to capture these “real fluid” effects, van der Waals was the first to try to incorporate the impact of intermolecular forces into the equation of state [2]. Subsequently, other groups proposed corrections and improvements to generalize the approach. Currently, cubic equations of state (EoS) are widely used in computational fluid dynamics due to their computational affordability and acceptable accuracy. For the present study, the Peng-Robinson [67] equation has been selected since it offers satisfactory accuracy for the $O_2 - H_2$ system. Figure 1 presents the thermodynamic scheme predictions of density, heat capacity at constant pressure and speed of sound compared to the reference database from *NIST* [68] for pure oxygen at $P = 100\text{bar}$, and over the temperature range $[150\text{K} - 300\text{K}]$. A maximum error of 12% is observed on density, and 11% on speed of sound. Since the present study focuses more on the behavior of the equation of state than on the absolute precision, this level of accuracy is considered acceptable. Also, the same equation of state is used in all the approaches tested in this work. Note, however, that any other EoS could be used for the present analysis.

The Peng Robinson EoS has the form:

$$P = \frac{RT}{V - B_m} - \frac{A_m}{V^2 + 2B_mV - B_m^2}, \quad (1)$$

where R is the ideal-gas constant, V the molar volume, T and P the temperature and the pressure, respectively. The coefficients A_m and B_m account for attraction and repulsion effects among molecules. They are calculated using a set of nonlinear mixing-rules [2, Chapter 4] given by

$$A_m = \sum_{k=1}^{Ns} \sum_{l=1}^{Ns} X_k X_l \sqrt{A_k A_l} k_{kl}, \quad B_m = \sum_{k=1}^{Ns} X_k B_k \quad (2)$$

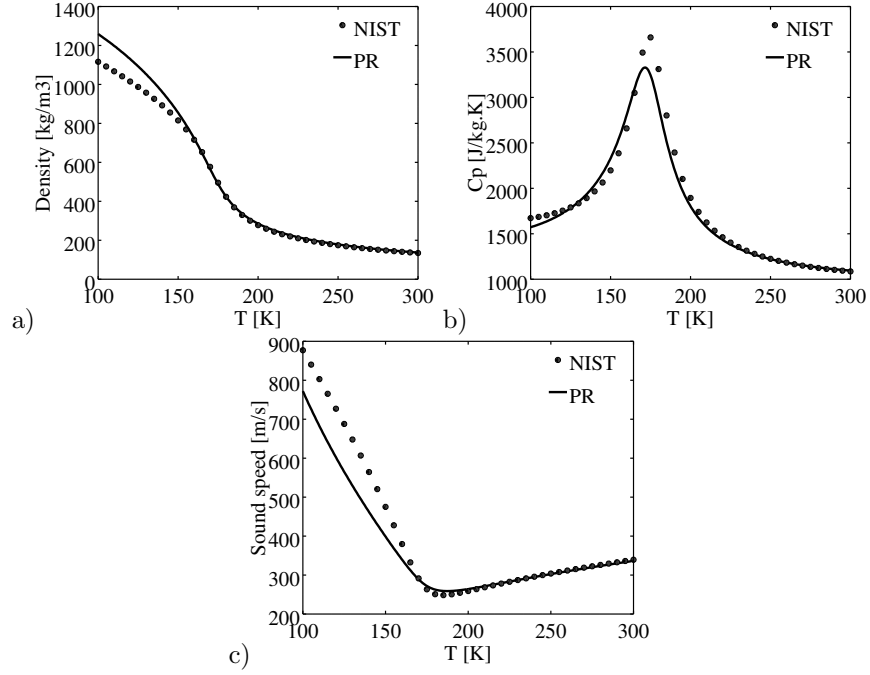


Figure 1: Thermodynamic predictions of the Peng-Robinson equation of state for pure oxygen at $P = 100\text{bar}$: (a) density, (b) heat capacity at constant pressure and (c) speed of sound. Predictions of the Peng-Robinson (PR) equation of state (line) are compared to the *NIST* database (symbols) [68].

where

$$A_k = 0.457236 \frac{(RT_{c,k})^2}{P_{c,k}} \left[1 + C_k \left(1 - \sqrt{T/T_{c,k}} \right) \right]^2, \quad (3)$$

$$B_k = 0.077796 RT_{c,k}/P_{c,k}, \quad (4)$$

$$C_k = 0.37464 + 1.54226 \omega_k - 0.2699 \omega_k^2. \quad (5)$$

170 In the expression above, X_k is the molar fraction of species k , k_{kl} is the binary interaction parameter between species k and l and ω_k is the acentric factor of species k . $P_{c,k}$ and $T_{c,k}$ are the critical pressure and temperature of species k , respectively.

A two step approach is used to determine the thermodynamic properties
 175 at relevant conditions. First, the mixture properties are evaluated at the temperature of interest and at a reference pressure, using the corresponding states

methodology. Departure functions are then applied to obtain the mixture state at the desired pressure [2]. These functions are exact relations derived from Maxwell's relations and make full use of the real mixture p - v - T path dependencies dictated by the equation of state. The sensible enthalpy $h(T, \rho)$ and heat capacity at constant pressure $C_p(T, \rho)$ are estimated by

$$h(T, \rho) - h^\circ(T) = \int_{P^\circ}^P \left[\frac{1}{\rho} - \frac{T}{\rho^2} \left(\frac{\partial \rho}{\partial T} \right)_{P, Y_k} \right] dP \quad (6)$$

$$C_p(T, \rho) - C_p^\circ(T) = - \int_{\rho^\circ}^{\rho} \left[\frac{T}{\rho^2} \left(\frac{\partial^2 P}{\partial T^2} \right)_{\rho} \right] d\rho + \frac{T}{\rho^2} \left(\frac{\partial^2 P}{\partial T^2} \right)_{\rho} - \frac{T}{\rho^2} \left(\frac{\partial P}{\partial \rho} \right)_T \quad (7)$$

where the superscript (\circ) represents the reference state. Derivatives in Eq. 6 and 7 are evaluated analytically from the equation of state. Standard state properties are obtained using the databases developed by Gordon and McBride [69] and Kee *et al.* [70].

It is useful to establish the sensitivity of real fluid thermodynamics in the context of computational fluid dynamics. This is accomplished by investigating the sensitivity of the equation of state (Peng-Robinson) with respect to small perturbations of density and energy.

In thermodynamic space and for a pure species, the variation of pressure depends on the variations in density and sensible energy:

$$dP = (\partial P / \partial \rho)_{\rho e} d(\rho) + (\partial P / \partial \rho e)_{\rho} d(\rho e) . \quad (8)$$

The Jacobians (see Appendix A for the derivation) are:

$$(\partial P / \partial \rho e)_{\rho} = - \frac{\rho_T}{\rho C_v \rho_P} , \quad (9)$$

$$(\partial P / \partial \rho)_{\rho e} = \frac{\rho C_p + h \rho_T}{\rho C_v \rho_P} , \quad (10)$$

where C_v and C_p are the heat capacities at constant volume and constant pressure, respectively. h is the sensible enthalpy, ρ_p and ρ_T are the derivatives of density with respect to pressure and temperature. Note that in a flow, momentum also has an impact on pressure. By adding the contribution of kinetic

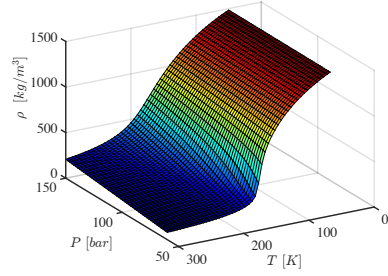
energy ($e_c = 1/2(U_i U_i)$) to Eq. 8, one can easily obtain:

$$dP = -\frac{\rho_T}{\rho C_v \rho_P} d(\rho e_t) + \left[\frac{\rho C_p + \rho_T (h_s - e_c)}{\rho C_v \rho_P} \right] d\rho + \frac{\rho_T}{\rho C_v \rho_P} U_i d(\rho U_i), \quad (11)$$

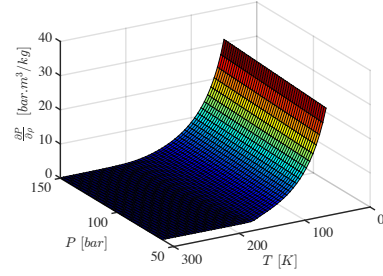
Figure 2 presents the evolution of density and the two Jacobian terms described in Eq. 9 and 10 for pure oxygen over ranges of pressure and temperature of interest for rocket engines (i.e., above critical critical pressure of oxygen: $P_c^{O_2} = 50.4bar$). One can observe that in the vicinity of the pseudo boiling line (where density varies significantly) both Jacobian terms change dramatically. This means that small variations in density and energy may result in large changes in pressure.

The impact of these non-linearities can be illustrated by a simple numerical experiment. A temperature variation (hyperbolic tangent function) is used to generate gradients in density and energy for pure oxygen at a pressure of $150bar$. Asymptotic temperature values are initially set to $150K$ and $300K$, respectively. These values have been chosen to be on either side of the pseudo-boiling line at the considered pressure. For pure oxygen at $150bar$, the pseudo boiling point (maximum of heat capacity) is at $T = 185K$ [17, 16] (note that the critical temperature of oxygen is $T_c^{O_2} = 154.6K$). This results in a high density difference and positions the gradient in the high-Jacobian region in thermodynamic space. To simulate the alteration of transported quantities caused by numerical errors or stabilization methods, density (ρ) and energy (ρe) are filtered using Gaussian filters of different kernel widths. Note that the same analysis could be conducted by adding noise to the data (in the gradient region). Subsequently, pressure and temperature are re-evaluated based on filtered density and energy: $P = f(\bar{\rho}, \bar{\rho e})$ and $T = g(\bar{\rho}, \bar{\rho e})$, where f and g are relationships representing the impact of the equation of state.

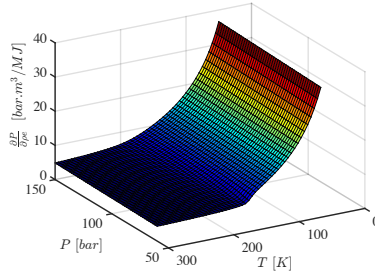
Figure 3 shows filtered density and energy fields, and the resultant pressure and temperature. Temperature is fairly insensitive to the filtering operation. Pressure, however, is significantly impacted and presents a large non-physical decrease in the gradient region. This shows that in the context of an equation system based on density and energy, small variations of the transported quan-



a)



b)



c)

Figure 2: Thermodynamic sensitivity at elevated pressure for pure oxygen in pressure-temperature space ([60-150] bar and [60-300] K): (a) density, (b) Jacobian term: $(\partial P/\partial \rho)_{\rho e}$ and (c) Jacobian term: $(\partial P/\partial \rho e)_{\rho}$.

220 tities introduced by the numerical approach may result in significant pressure oscillations. These variations can be introduced by an explicit filtering step such as those used to remove high-frequency oscillations, numerical errors or

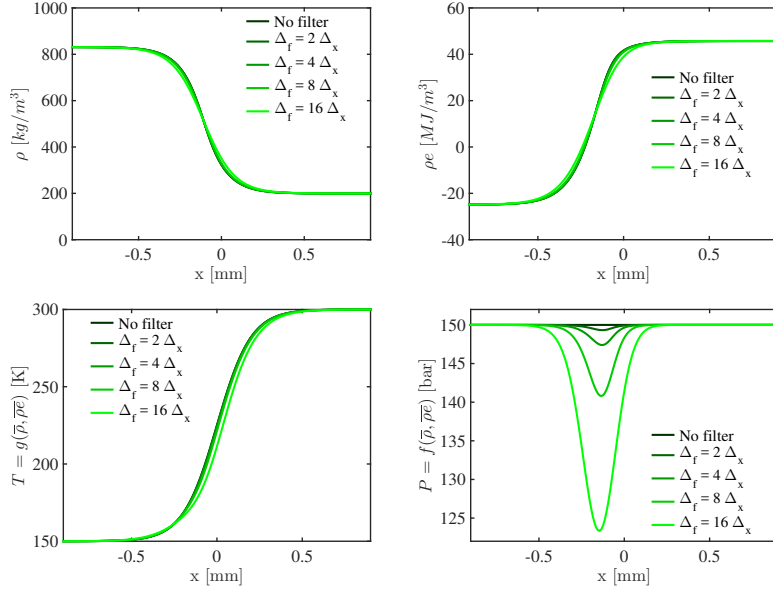


Figure 3: Impact of filtering on the estimation of pressure and temperature in a transcritical case (pure oxygen, $150K < T < 300K$ and $P = 150bar$). Δ_f is the filter size in grid spacing unit Δ_x .

the dissipation of a stabilization method.

This issue however is only significant close to the pseudo boiling line where the equation of state presents strong nonlinearities. If the same numerical experiment is replicated at the same pressure but in a temperature range where
 225 Jacobians have smaller values, the reconstructed pressure exhibits a different behavior. For example, Fig. 4 shows the same filtering test over the range $500K < T < 1000K$ at $P = 150bar$. In this region, the equation of state presents a quasi-linear behavior and the filtering procedure does not introduce
 230 large deviations in pressure.

This illustration shows why in the vicinity of the pseudo-boiling line, an approach based on the transport of density and energy is prone to spurious pressure oscillations if artificial stabilization is required in gradient regions.

To circumvent this issue, an efficient strategy is to replace the energy equation
 235 by a pressure equation. While this approach is not conservative with

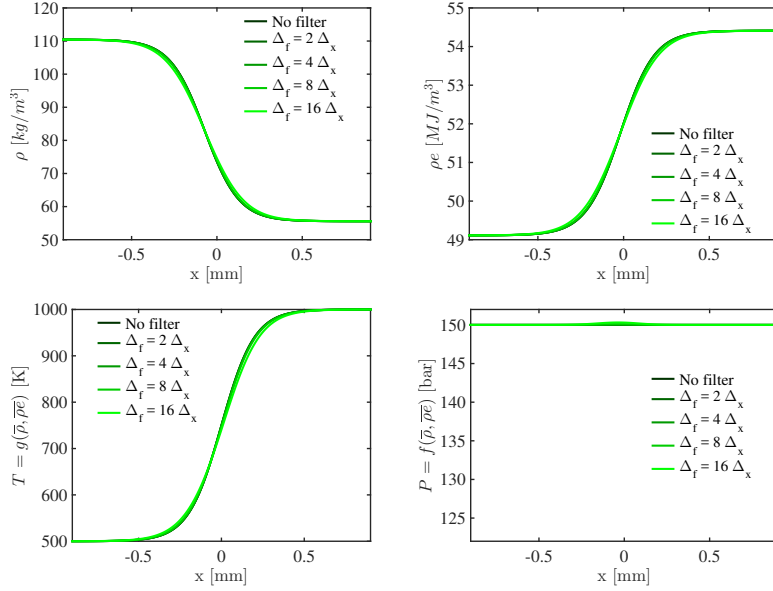


Figure 4: Impact of filtering on the estimation of pressure and temperature in a temperature range where non-linear effects are not significant (pure oxygen, $500K < T < 1000K$ and $P = 150bar$). Δ_f is the filter size in grid spacing unit Δ_x .

respect to energy, it suppresses unphysical pressure oscillations [8]. Another strategy, explored in this paper, is to combine energy-based and pressure-based approaches to retain energy conservation while avoiding spurious pressure oscillations due to the non-linearity of the equation of state. These methods are described in the next section.

3. Theoretical and numerical approaches

Three distinct approaches have been tested in the present investigation, The fully conservative Navier-Stokes system based on the transport of total energy is first introduced in Section 3.1. A pressure-based method is described in Section 3.2. As suggested by [7], this quasi-conservative method allows avoid-
 245 ing non-physical pressure disturbances under transcritical conditions when used with non-linear thermodynamics (in flows without shocks), but suffers from inaccuracy in the estimation of temperature and other thermodynamic variables.

250 To improve this aspect, one can employ a quasi-conservative enthalpy-based approach, presented here in Section 3.3.

3.1. Energy-based formulation (EB)

The energy-based (EB) formulation involves the classical Navier-Stokes system of equations used to transport the conservative variables of density (ρ), momentum ($\rho\mathbf{U} = \rho(U_x, U_y, U_z)^T$), species mass fractions (ρY_k , where k is the index of k^{th} species of the mixture) and total energy ($e_t = h_t - p/\rho = e_s + 1/2\mathbf{U}\cdot\mathbf{U}$, where h_t is the total enthalpy and e_s is the sensible energy). The governing system is given by

$$\frac{\partial \rho}{\partial t} + \nabla \cdot (\rho\mathbf{U}) = 0, \quad (12)$$

$$\frac{\partial}{\partial t}(\rho e_t) + \nabla \cdot ((\rho e_t + P)\mathbf{U}) = \nabla \cdot (-\mathbf{q}_e + \tau \cdot \mathbf{U}), \quad (13)$$

$$\frac{\partial}{\partial t}(\rho\mathbf{U}) + \nabla \cdot [\rho\mathbf{U} \otimes \mathbf{U} + P\mathbf{I}] = \nabla \cdot \tau, \quad (14)$$

$$\frac{\partial}{\partial t}(\rho Y_k) + \nabla \cdot (\rho Y_k \mathbf{U}) = -\nabla \cdot \mathbf{q}_k. \quad (15)$$

In this system,

$$\tau = \mu \left[-\frac{2}{3}(\nabla \cdot \mathbf{U})\mathbf{I} + (\nabla\mathbf{U} + \nabla\mathbf{U}^T) \right]. \quad (16)$$

represents the viscous stress tensor, where μ is the dynamic viscosity and P is the pressure. \mathbf{q}_k represents the mass diffusion fluxes of the k^{th} species, and contains the velocity correction U_{corr} (to ensure global mass conservation) resulting from the Hirschfelder and Curtiss approximation [71]:

$$\mathbf{q}_k = -\rho \left(D_k \frac{W_k}{W} \nabla X_k - Y_k U_{corr} \right), \quad (17)$$

where X_k , D_k and W_k are the molar fraction, the molar diffusivity and the molar mass of the k^{th} species, respectively. W is the molar mass of the mixture.

The term \mathbf{q}_e is the energy diffusion flux expressed as:

$$\mathbf{q}_e = -\lambda \nabla T + \sum_{k=1}^{N_s} \mathbf{q}_k h_k, \quad (18)$$

where λ is the thermal conductivity of the mixture, T the temperature and h_k the enthalpy of the k^{th} species. Note that Soret and Dufour effects are neglected.

At supercritical pressures, molecular transport properties are evaluated in a manner analogous to the thermodynamic properties previously presented in Section 2. Viscosity and thermal conductivity are obtained using the extended corresponding state methodologies developed by Ely and Hanley [72]. Mass and thermal diffusion coefficients are obtained using the approach from Hirschfelder et al. [1] and Takahashi [73]. The present framework can handle a wide range of pressure and temperature where multicomponent and/or preferential diffusion processes are present. The mixture diffusion coefficient for species k , D_k is computed as a function of the matrix of binary diffusion coefficients D_{ij} , as obtained from kinetic theory [1, 74]:

$$D_k = \frac{1 - Y_k}{\sum_{j \neq k}^{N_s} X_j / D_{jk}} \quad (19)$$

Thermodynamic properties, pressure and temperature are evaluated thanks
 255 to a conventional Newton iterative procedure. First, pressure is calculated from the equation of state using the transported density and an initial guess on temperature. The thermodynamic energy is then computed, and compared to the transported energy. Temperature is updated using this difference and the heat capacity at constant volume. This procedure is repeated until the error on
 260 energy drops below a threshold set by the user (set here at 10^{-10} , sensitivity analysis has shown no degradation of accuracy for values below 10^{-8}). Once pressure and temperature are found, all other thermodynamic and transport quantities are calculated via the equation of state.

3.2. Pressure-based formulation (PB)

In this subsection, the derivation of the pressure evolution equation is presented. Only the main steps of the derivation are listed here for sake of brevity.

Additional details on the derivation are provided in Appendix B. The static pressure equation is derived from the Gibbs-Duhem equation [2]:

$$\frac{DP}{Dt} = \left(\frac{\partial P}{\partial \rho} \right)_{e, Y_k} \frac{D\rho}{Dt} + \left(\frac{\partial P}{\partial e} \right)_{\rho, Y_k} \frac{De}{Dt} + \sum_{k=1}^{N_s} \left(\frac{\partial P}{\partial Y_k} \right)_{e, \rho} \frac{DY_k}{Dt}, \quad (20)$$

where e is sensible energy, with $D\phi/Dt = \partial\phi/\partial t + \mathbf{U} \cdot \nabla\phi$ the total derivative for any quantity ϕ . Using the transport equations previously introduced in Section 3.1, we obtain the transport equation for pressure:

$$\begin{aligned} \frac{\partial P}{\partial t} + \mathbf{U} \cdot \nabla P &= \left(\left(\frac{\partial P}{\partial \rho} \right)_{e, Y_k} + \frac{P}{\rho^2} \left(\frac{\partial P}{\partial e} \right)_{\rho, Y_k} \right) (-\rho \nabla \cdot \mathbf{U}) \\ &+ \left(\frac{\partial P}{\partial e} \right)_{\rho, Y_k} \left(\frac{1}{\rho} (-\nabla \cdot \mathbf{q}_e + \tau \nabla \cdot \mathbf{U}) \right) \\ &+ \sum_{k=1}^{N_s} \left(\frac{\partial P}{\partial Y_k} \right)_{e, \rho} \left(\frac{1}{\rho} (-\nabla \cdot \mathbf{q}_k) \right), \end{aligned} \quad (21)$$

265 Using the relation B.12 of Appendix B the derivatives introduced above can be explicitly expressed:

$$\left(\frac{\partial P}{\partial \rho} \right)_{e, Y_k} = c^2 \left[1 + \frac{P \rho_T}{C_p \rho^2} \right] \quad (22)$$

$$\left(\frac{\partial P}{\partial e} \right)_{\rho, Y_k} = -\frac{\rho_T c^2}{C_p} \quad (23)$$

$$\left(\frac{\partial P}{\partial Y_k} \right)_{e, \rho} = \frac{c^2}{C_p} [\rho_T h_{Y_k} - C_p \rho_{Y_k}] \quad (24)$$

$$(25)$$

where

$$\rho_T = \left(\frac{\partial \rho}{\partial T} \right)_{P, Y_k}, \quad \rho_P = \left(\frac{\partial \rho}{\partial P} \right)_{T, Y_k}, \quad \rho_{Y_k} = \left(\frac{\partial \rho}{\partial Y_k} \right)_{P, T}, \quad (26)$$

$$h_{Y_k} = \left(\frac{\partial h}{\partial Y_k} \right)_{P, T} \quad \text{and,} \quad c^2 = \left(\frac{\partial P}{\partial \rho} \right)_{s, Y_k} = \frac{\gamma}{\rho_P}. \quad (27)$$

Note that the derivatives ρ_T , ρ_P , ρ_{Y_k} and h_{Y_k} are analytically evaluated from the equation of state and γ is the heat capacity ratio. Using these derivatives, Eq. 21 can be fully expanded and the system of governing of equations can be written as:

$$\frac{\partial \rho}{\partial t} + \nabla \cdot (\rho \mathbf{U}) = 0, \quad (28)$$

$$\begin{aligned} \frac{\partial P}{\partial t} + \mathbf{U} \cdot \nabla P = & -\rho c^2 \nabla \cdot \mathbf{U} - \frac{c^2 \rho_T}{\rho C_p} (-\nabla \cdot \mathbf{q}_e + \tau \nabla \cdot \mathbf{U}) \\ & + \sum_{k=1}^{N_s} \frac{c^2}{\rho C_p} (\rho_T h_{Y_k} - \rho_{Y_k} C_p) (-\nabla \cdot \mathbf{q}_k), \end{aligned} \quad (29)$$

$$\frac{\partial}{\partial t}(\rho \mathbf{U}) + \nabla \cdot [\rho \mathbf{U} \otimes \mathbf{U} + P \mathbf{I}] = \nabla \cdot \tau, \quad (30)$$

$$\frac{\partial}{\partial t}(\rho Y_k) + \nabla \cdot (\rho Y_k \mathbf{U}) = -\nabla \cdot \mathbf{q}_k. \quad (31)$$

Where \mathbf{q}_k and \mathbf{q}_e have been previously introduced in Eq. 17 and 18, respectively. Note that equation (29) is consistent with the simplified transport equation derived by Terashima and Koshi [7] given that:

$$\frac{\alpha_P}{C_v \beta_T \rho} = \frac{\alpha_P \rho c^2}{C_v \gamma \rho} = \frac{\alpha_P c^2}{C_p} = -\frac{c^2 \rho_T}{C_P \rho}, \quad (32)$$

where C_v is the heat capacity at constant volume, $\alpha_P = 1/V(\partial V/\partial T)_P$ is the thermal expansion coefficient, and $\beta_T = -1/V(\partial V/\partial P)_T$ is the isothermal compressibility coefficient.

Temperature, thermodynamic and transport quantities are evaluated using a similar Newton iteration method as in the EB approach. Here the method start from an initial guess on temperature, from which a thermodynamic density (ρ_{eos}) is determined using the equation of state and the transported pressure. This density is compared to the transported density (ρ_{trans}) and the difference is used to update temperature, using the increment:

$$dT = \frac{\rho_{trans} - \rho_{eos}}{\rho_T}, \quad (33)$$

where ρ_T is the derivative of density with respect to temperature which is analytically estimated from the roots of the equation of state. This procedure is iteratively solved until the error on density falls below a threshold set by the user (10^{-10} in the present study). All other properties are then calculated from T and ρY_k .

3.3. Enthalpy-based formulation (HB)

This approach is based on the transport of enthalpy instead of energy. The temporal evolution of enthalpy is described as the sum of the evolutions in pressure and energy. The objective is to use the oscillation-free transported pressure P_{trans} as the mechanical pressure (used in momentum and energy equations), and to compute thermodynamic variables from the transported enthalpy (obtained by combining transported pressure and energy). This formulation provides the dynamic stability of a pressure-based method while estimating thermodynamics with a similar accuracy than the energy-based approach. This approach conserves total energy by construction since it is a transported quantity. The equation for total energy is the same as in the energy-based approach, with no additional source or sink terms, and all flux terms (viscous, inviscid, and pressure) are uniquely defined at each cell face, which guarantees discrete conservation in the present finite-volume formalism. However, pressure is obtained from a non conservative transport equation, which makes the approach only quasi-conservative as enthalpy is not exactly conserved.

The transported quantities are density (ρ), momentum ($\rho\mathbf{U}$), species mass fractions (ρY_k) and total enthalpy (h_t). The governing system of the HB approach reads:

$$\frac{\partial \rho}{\partial t} + \nabla \cdot (\rho \mathbf{U}) = 0, \quad (34)$$

$$\frac{\partial \rho h_t}{\partial t} = \frac{\partial \rho e_t}{\partial t} + \frac{\partial P}{\partial t}, \quad (35)$$

which can be expanded to:

$$\begin{aligned} \frac{\partial \rho h_t}{\partial t} = & -\nabla \cdot ((\rho e_t + P)\mathbf{U}) + \nabla \cdot (-\mathbf{q}_e + \tau \cdot \mathbf{U}) \\ & - \mathbf{U} \cdot \nabla P - \rho c^2 \nabla \cdot \mathbf{U} - \frac{c^2 \rho_T}{\rho C_p} (-\nabla \cdot \mathbf{q}_e + \tau \nabla \cdot \mathbf{U}) \\ & + \sum_{k=1}^{N_s} \frac{c^2}{\rho C_p} (\rho_T h_{Y_k} - \rho Y_k C_p) (-\nabla \cdot \mathbf{q}_k), \end{aligned} \quad (36)$$

where P is estimated using equation 29.

$$\frac{\partial}{\partial t}(\rho \mathbf{U}) + \nabla \cdot [\rho \mathbf{U} \otimes \mathbf{U} + P_{trans} \mathbf{I}] = \nabla \cdot \boldsymbol{\tau}, \quad (37)$$

$$\frac{\partial}{\partial t}(\rho Y_k) + \nabla \cdot (\rho Y_k \mathbf{U}) = -\nabla \cdot \mathbf{q}_k, \quad (38)$$

As classically done, the thermodynamic state is calculated using a Newton iterative procedure. Here, the inputs of the thermodynamic scheme are the transported enthalpy ($h_{trans} = [(\rho e)_{trans} + P_{trans}]/\rho_{trans}$) and density (ρ_{trans}).
 295 The same relative threshold of 10^{-10} is used here, as in previous approaches.

The pressure used in the enthalpy-based system is obtained via its own transport equation. This pressure is referred as *mechanical* pressure as it appears
 300 in momentum and energy equations. A *thermodynamic* pressure could also be estimated from density and enthalpy using the thermodynamic scheme. This pressure is not used since it suffers from non-physical oscillations in gradient regions due to the impact of numerical dissipation. In other regions of the flow, both pressures are identical.

305 3.4. Numerical approach

Calculations were performed using the numerical framework developed by Oefelein [36, 38]. For all three approaches, the same explicit four-stage Runge-Kutta temporal scheme [75, 76] has been used with a time-step restriction based on the Courant-Friedrichs-Lewy condition: $CFL_{max} = 0.5$. The governing systems are discretized on a staggered grid in generalized curvilinear coordinates in
 310 finite-volume form. Diffusive fluxes are estimated with a second-order accurate centered difference scheme. Convective fluxes are evaluated using a second-order *QUICK* scheme (Quadratic Upstream Interpolation for Convective Kinematics) [77]. To ensure stability, the scheme transitions to a first-order upwind scheme [78] in gradient regions if spatial resolution is insufficient. A detailed
 315 description of the stabilization approach is outlined in Appendix C. Note that

in the case of the PB and HB formulations, the gradient terms in the pressure equation are evaluated with centered operators. The residual terms coming from the stabilization of the conserved quantities have not been incorporated. These terms are described in Appendix D. In this manner, spurious pressure oscillations caused by the numerical stabilization scheme are avoided, which makes the PB and HB approaches dynamically more stable than the energy-based method. However, because of this modification, the pressure equation is no longer conservative. This is why the present pressure- and enthalpy-based formulations are not conservative.

4. Results and discussion

Four benchmark tests of increasing complexity have been considered for the present analysis. All cases involved oxygen and hydrogen at the conditions previously studied by Oefelein [38] and Ruiz *et al.* [79]. These cases are performed at a pressure of $P = 100\text{bar}$, which is above the critical pressures of oxygen and hydrogen ($P_c^{O_2} = 50.4\text{bar}$ and $P_c^{H_2} = 13.0\text{bar}$). Transcritical conditions are reached by setting the oxygen stream temperature at 100K (below its critical temperature: $T_c^{O_2} = 154.6\text{K}$), and the temperature of the hydrogen stream at 150K (above $T_c^{H_2} = 33.1\text{K}$). Note that before comparing these approaches, it was verified that they result in the same perditions when no artificial dissipation is necessary for stabilization (Appendix B.1).

First, pure advection of density profiles were conducted to mimic the Euler convection of a parcel of oxygen into gas-like hydrogen. Second, a one-dimensional Sod shock was used to investigate conservativity. Then, a two-dimensional vortex case was performed, to replicate the effects of a turbulent eddy on a transcritical interface. And finally, a two-dimensional turbulent mixing layer was considered that reproduces the flow conditions at the exit of an a cryogenic rocket injector.

4.1. Advection test cases

345 In the following, Euler convection of profiles of density, temperature and
mass-fraction are examined. These profiles are advected across a one-dimensional
domain (10 times the characteristic size of the profile, with inlet and outlet on
both ends). Note that a periodic system is not considered here, in order to have
an open system where the mean pressure is imposed by an outlet. This ensures
350 an accurate comparison of the three approaches. In a closed system (tested but
not shown), the PB and HB approaches yield a constant mean pressure in time
while the EB formulation predicts a decreasing system pressure as numerical
dissipation acts as a numerical “evaporation”. The profiles are described by a
double hyperbolic tangent function that allows a precise control of the gradient
355 initial magnitude and resolution. The initial profile is composed of oxygen at
100K transitioning to gaseous hydrogen at 150K, at a pressure of 100bar. The
transition thickness is set to 100nm, and the profile is convected at a velocity
of 200 m/s across a 5mm-long one-dimensional domain. The domain is dis-
cretized with 200 uniformly distributed points. The schematic diagram of the
360 computation is presented in Fig. 5. To exemplify the impact of numerical dis-
sipation on the different approaches, a first-order accurate upwind scheme has
been employed.

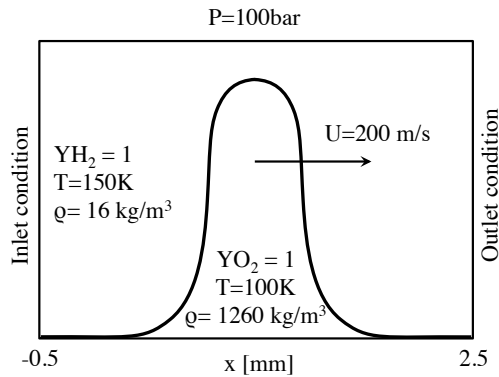


Figure 5: Schematics of the one-dimensional advection test.

The spatial profiles of main flow quantities at $t = 20\mu s$ are presented in Fig. 6. As discussed earlier in Section 2, the dissipation introduced by the up-

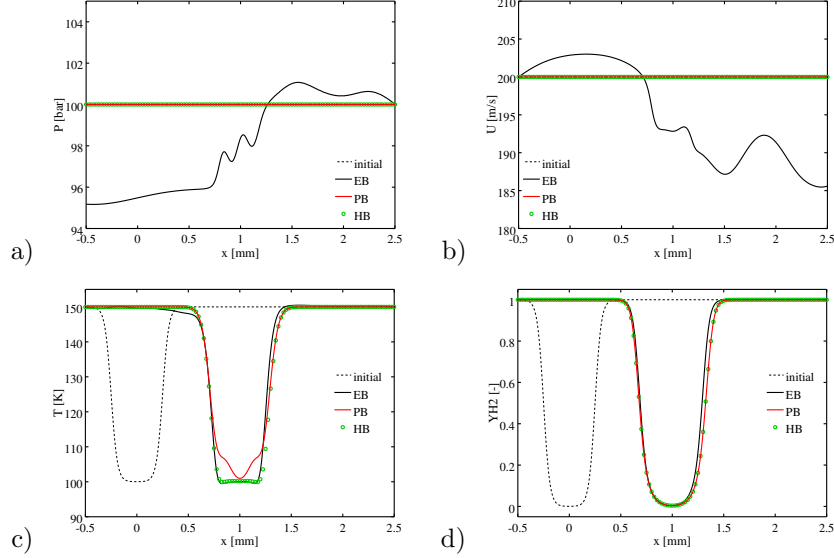


Figure 6: Spatial profiles of pressure (a), velocity (b), temperature (c) and hydrogen mass fraction (d), recorded at $t = 20\mu s$ in the one-dimensional advection test (no molecular diffusion).

365 wind convective scheme significantly impacts the pressure and velocity fields of the energy-based approach, while being unaffected with the PB and HB methods. In the later methods, terms emanating from the stabilization scheme have been removed from the pressure equations preventing the spurious oscillations observed with the EB formulation. To compare the profiles in Fig. 6 (c), the temperature the energy-based approach is taken as reference since the method is fully conservative. One can observe that the PB approach fails to recover the reference mixture temperature. This can be explained by the fact that density is dissipated while pressure remains constant. Maintaining pressure while dissipating density implies a local energy increase, reflected by a local increase
 370 in temperature as observed in Fig. 6 (c). Since no acoustic effects are present to redistribute energy, the error on temperature remains confined to the gra-

dient region where the artificial dissipation of density occurs. This is similar
 to a high-pressure phase change where the pressure is artificially kept constant.
 Under transcritical conditions, if a dense parcel of fluid diffuses into a lighter
 fluid, the dense fluid extracts energy from its gas-like ambient (comparably to
 380 a low pressure evaporation) [16]. Under physical conditions, this process leads
 to small amplitude acoustic waves and velocity perturbations generated in the
 vicinity of the interface (permitting the redistribution of density). This is ob-
 served in the test case presented in Appendix B.1. However, if pressure is kept
 385 constant, energy is locally created by the thermodynamic scheme, (the system
 is non-conservative), and locally the temperature increases compared to an con-
 servative approach. Matheis *et al.* [65] have observed a similar temperature
 behavior while computing the injection of a dense nitrogen jet into gaseous hy-
 drogen at supercritical conditions. They noted a difference in the temperature
 390 fields predicted by a fully conservative approach (equivalent to the present EB
 method) and a pressure-based formulation. In the case of the energy-based
 approach, the temperature decreased below the injection temperature in the
 mixing layer between the dense nitrogen and the gaseous hydrogen. This was
 not observed when the pressure-based method was employed. No explanation
 395 was provided in [65] on the the cause of the discrepancy.

On the contrary, the HB approach provides a mixing temperature comparable
 to the energy-based method. Here, the thermodynamic scheme is based on the
 transported enthalpy which is almost identical to the one of the EB formulation.
 The small differences observed in Fig. 6 (c) are attributed to the local pressure
 400 variations present in the EB prediction.

Taking the energy-based results as reference, the differences on enthalpy and
 temperature can be explicitly formulated and measured. These errors read:

$$\text{error}H_{PB} = \left(e_{eos}(\rho_{trans}, P_{trans}) + \frac{P_{trans}}{\rho_{trans}} - H_{EB} \right) \quad (39)$$

and:

$$\text{error}H_{HB} = \left(\frac{(\rho e)_{trans} + P_{trans}}{\rho_{trans}} - H_{EB} \right) \quad (40)$$

The errors on T are calculated by dividing the errors on enthalpy by $C_{p,eos}$.

These departures in mass-fraction space are presented in Fig. 7. One can verify that the mixture enthalpy calculated in the HB approach agrees well with the one of the energy-based method. Small differences can be seen due to discrepancies in pressure fields. Significant errors are however measured for the pressure-based method since the energy recomputed from density and pressure is markedly different from the transported one. The same type of behavior is

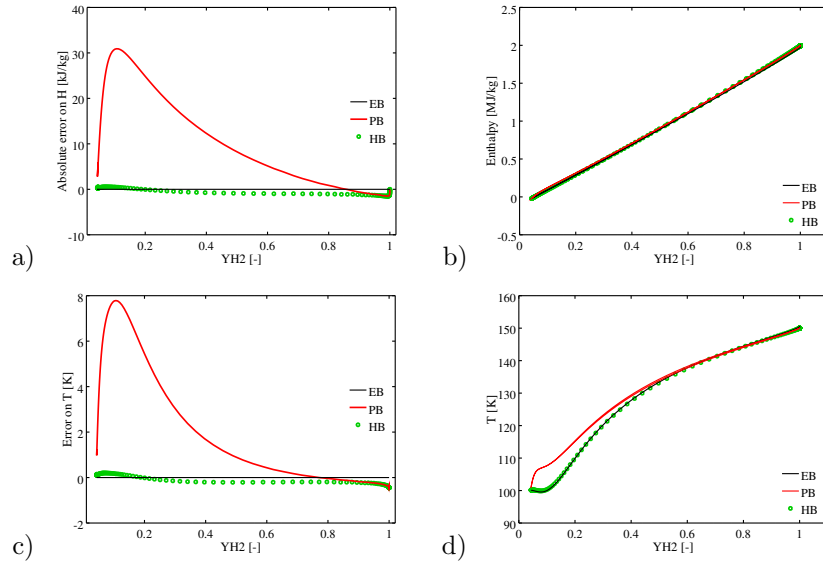


Figure 7: Measure in mass-fraction space of (a) error on enthalpy, (b) enthalpy, (c) error in temperature, and (d) temperature taking the EB approach as a reference. Profiles are based on the same dataset presented in Fig. 6, i.e. at $t = 20\mu s$.

observed for all other thermodynamic quantities, a subset is presented in Fig. 8.

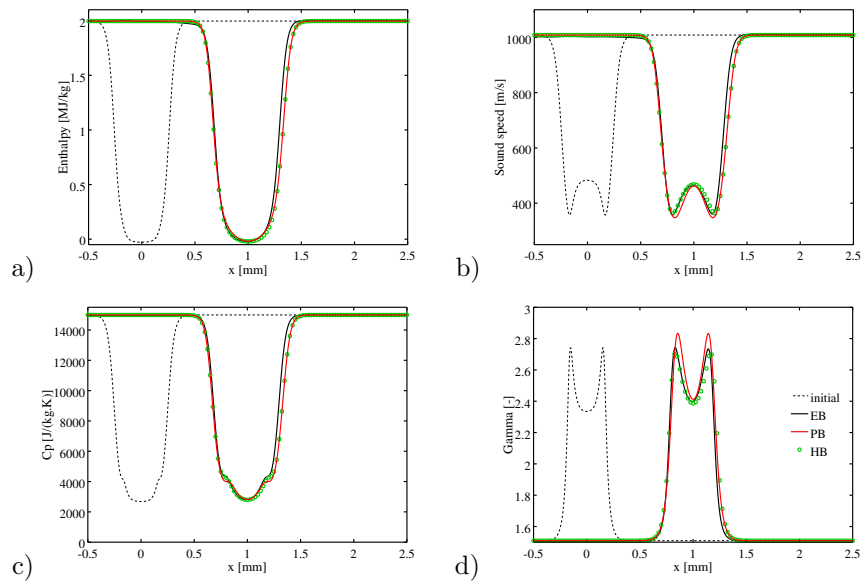


Figure 8: Key thermodynamic quantities estimated by the different methods in the one-dimensional case: a) enthalpy in mixture space, b) speed of sound, c) heat capacity at constant pressure and d) heat capacity ratio.

410 *4.2. Sod shock test*

The present Sod shock test [80] aims at distinguishing the different conservation properties of the three present approaches. The working fluid is pure oxygen. The left-hand-side state is defined by a pressure of $1bar$ and a density of $1kg/m^3$, while the right-hand-side state is set at a pressure of $0.1bar$ and a density of $0.1kg/m^3$. The initial jump is characterized by a hyperbolic tangent
415 profile with a thickness of $30\mu m$. The calculation is performed on a $2mm$ long one-dimensional domain, discretized by 200 cells ($\Delta_x = 10\mu m$). The Euler form of the transport system is used, and a first-order accurate upwind convective scheme is employed to ensure stability and enhance the impact of numerical
420 dissipation.

Instantaneous profiles at $t = 1ms$ are presented in Fig. 9, and close-ups on the shock region are provided in the sub-figures. Focusing first on the similarities, all three methods predict the same locations for the expansion fan, and for the contact discontinuity. Because all methods rely on a first-order upwind
425 scheme, the contact discontinuity is significantly thickened. Note that more oscillations are present in the results of the PB and HB approaches, since the pressure equation has been written without flux terms, and all derivatives are based on a second-order centered operator.

More differences can be observed in the shock region. One can observe that
430 the energy-based approach predicts correctly the shock position and all thermodynamic quantities agree well with the analytical solution. As expected, the pressure-based approach fails to recover the correct shock speed since the approach is not conservative. Figure 9f shows that the sensible energy downstream of the shock does not agree with the analytical solution. Subsequently, all
435 thermodynamic quantities such as temperature, sound speed, and heat capacity present discrepancies compared to the reference. Finally, since the energy is transported in the HB approach, the sensible energy is correctly predicted downstream of the shock, which leads to better predictions of all thermodynamic quantities such as temperature and sound speed. This results in a more
440 accurate shock position (as the pressure equation directly depends on the speed

of sound), but does not exactly recover the shock speed. The main reason is that despite conserving energy, the HB method does not conserve enthalpy since the pressure equation is not used in its conservative form.

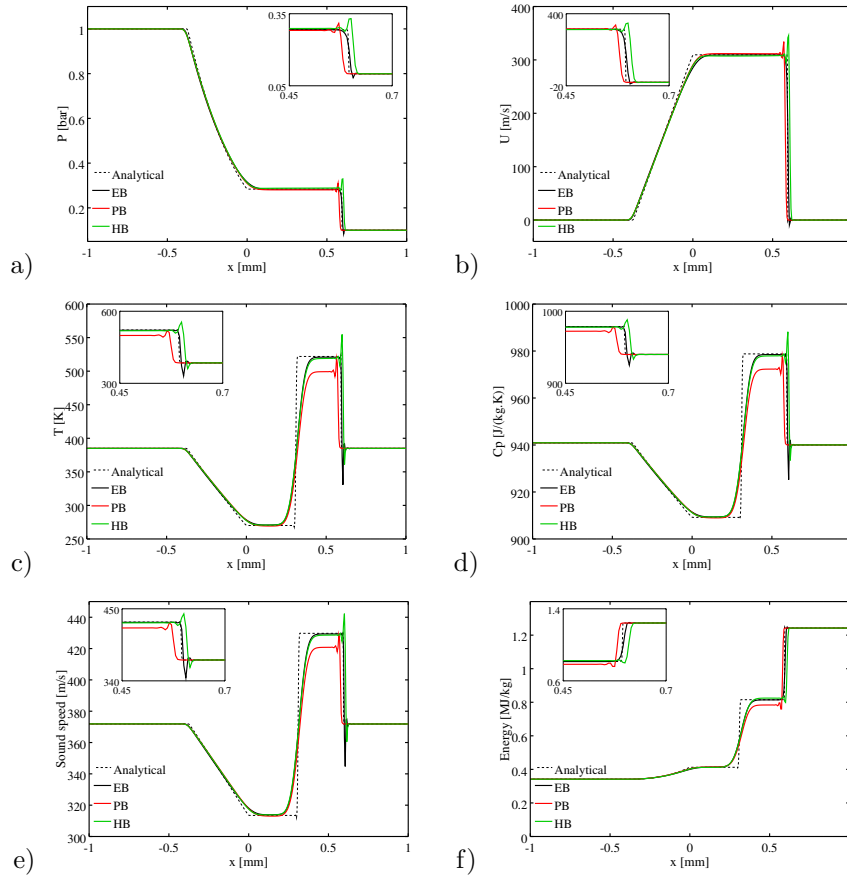


Figure 9: Sod shock in pure oxygen with a pressure ratio of ten-to-one: the sub-figure is a zoom on the shock region. Profiles captured at $t = 1ms$.

4.3. Two-dimensional vortex test cases

445 The objective of this section is to extend the previous comparisons to a more practical case where scalar gradients are resolved on only a few grid points and where the flow dynamics accentuates the resolution limitation. These aspects can be considered in a two-dimensional test case where a vortex interacts with a

transcritical gradient. A density gradient is imposed between hydrogen at 150K
450 and oxygen at 100K at 100bar using a hyperbolic tangent profile. Five points
are now used to describe the density jump. A $1\text{ mm} \times 1\text{ mm}$ two-dimensional
domain is discretized by 200 points in each direction. A non-isentropic vortex is
superimposed on the gradient to induce its deformation and compression. Note
that in other vortex analysis (such as flame-vortex interaction) eddies are usually
455 convected towards an interface to force their distortion. At present conditions,
tests have shown that it was difficult to achieve sufficient strain by convecting
a vortex towards the interface as the large density gradient acts as a quasi-solid
wall to the gaseous vortical structure. This is why it was chosen to directly
position the vortex across the density gradient. The circulation of the vortex
460 is selected to generate enough deformation and strain to reach the resolution
limit and activate the stabilization method. As described in Section 3.4, a
flux limiter is employed to continuously transition from a second-order accurate
QUICK scheme in zones where the numerical solution is sufficiently smooth
to a first-order accurate upwind scheme in the gradient regions. No molecular
465 diffusion is considered to isolate the impact of the stabilization approach.

The velocity field is described by [81]:

$$U = -\frac{y C_v}{R_v^2} \exp\left(-\frac{x^2 + y^2}{2R_v^2}\right), \quad (41)$$

$$V = \frac{x C_v}{R_v^2} \exp\left(-\frac{x^2 + y^2}{2R_v^2}\right), \quad (42)$$

where $R_v = 0.2\text{ mm}$ is the radius of the vortex and $C_v = -2.0 \cdot 10^{-5}\text{ m}^2/\text{s}$ is
the vortex circulation. A schematic of the computational domain and initial
conditions are shown in Fig. 10.

470 Figure 11 compares the fields of pressure, flux limiter, and temperature given
by the three methods at $t = 2\mu\text{s}$. The vortex creates a strong deformation of
the interface along with a significant compression of the density gradient. In the
compression zone, the gradient increases due to high strain-rate, which leads to
a local increase of the flux limiter magnitude to stabilize the calculation (Fig. 11
475 b). Note that its magnitude is comparable between the three approaches. As

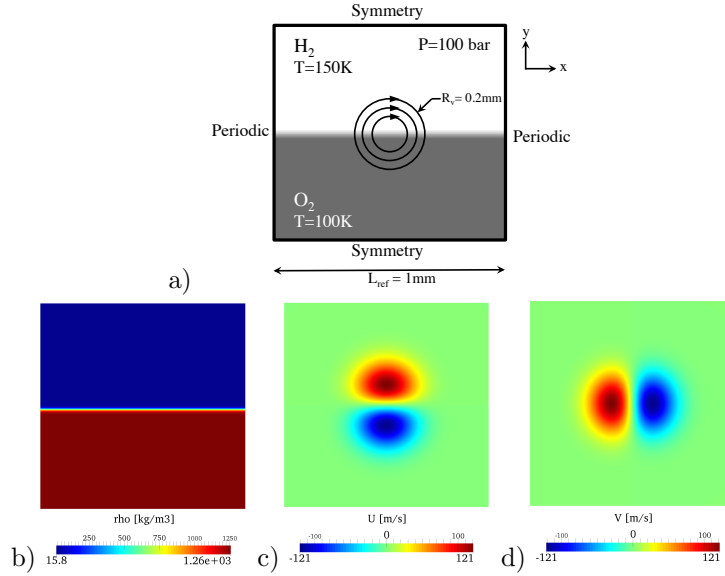


Figure 10: Schematics and initial conditions of the vortex-density gradient test case.

numerical dissipation is introduced, the energy-based approach is subject to pressure oscillations generated in the gradient region, while the pressure- and enthalpy-based methods exhibit smoother pressure fields (Fig. 11 a). The hydrodynamic effects of the vortex on the pressure field is however captured by the three approaches since they are related to spatial variation of momentum. A stability test shows that if the circulation of the vortex is increased, local pressure oscillations in the EB case result in very low pressure values, which locally drive the thermodynamic conditions inside the vapor dome. At these conditions, the dense fluid becomes a “classical” liquid, the continuum assumption is no longer valid and the equation of state becomes ill-conditioned. This leads to the divergence of the EB simulation while the PB and HB calculations remain stable.

The temperature field also shows some differences between the three formulations. Figures 11 (c) and (d) show that the energy-based form presents more pronounced temperature overshoots (in the $Y_{H_2} \approx 1$ region of Fig. 11 c). The three approaches also behave differently in mass-fraction space. Figure 11 (d)

shows that the pressure-based approach exhibits a local temperature increase ($Y_{H_2} \approx 0.05$), contrary to the EB and HB formulations. This behavior is similar to what was previously observed in the advection test case in Section 4.1.

495 In this figure, the adiabatic mixing line has been added. Adiabatic mixing is based on the assumption that the enthalpy varies linearly with mass-fraction, $h_{(T,Y)} = h_{(T_{O_2}, Y_{O_2})} + Y_{H_2}(h_{(T_{H_2}, Y_{H_2})} - h_{(T_{O_2}, Y_{O_2})})$. By construction, the adiabatic mixing line shows the thermodynamic state of the mixture if energy and species diffuse at the same rate, which is equivalent to assuming unity Lewis

500 numbers for the considered species. For both the energy- and enthalpy-based approaches, the mixture temperature follows the adiabatic line since numerical dissipation impacts energy and density in a similar way. This is not the case for the PB method as only density is dissipated by the stabilization scheme. The reader is reminded that no physical diffusion is used for this test case (Euler sim-

505 ulation). Note also that numerical dissipation has not yet reached steady state, and this is why many mixture points are still away from the adiabatic mixing line in Fig. 11 (d). More scatter is also observed for the energy-based case due to compressibility effects and the presence of spurious pressure fluctuations.

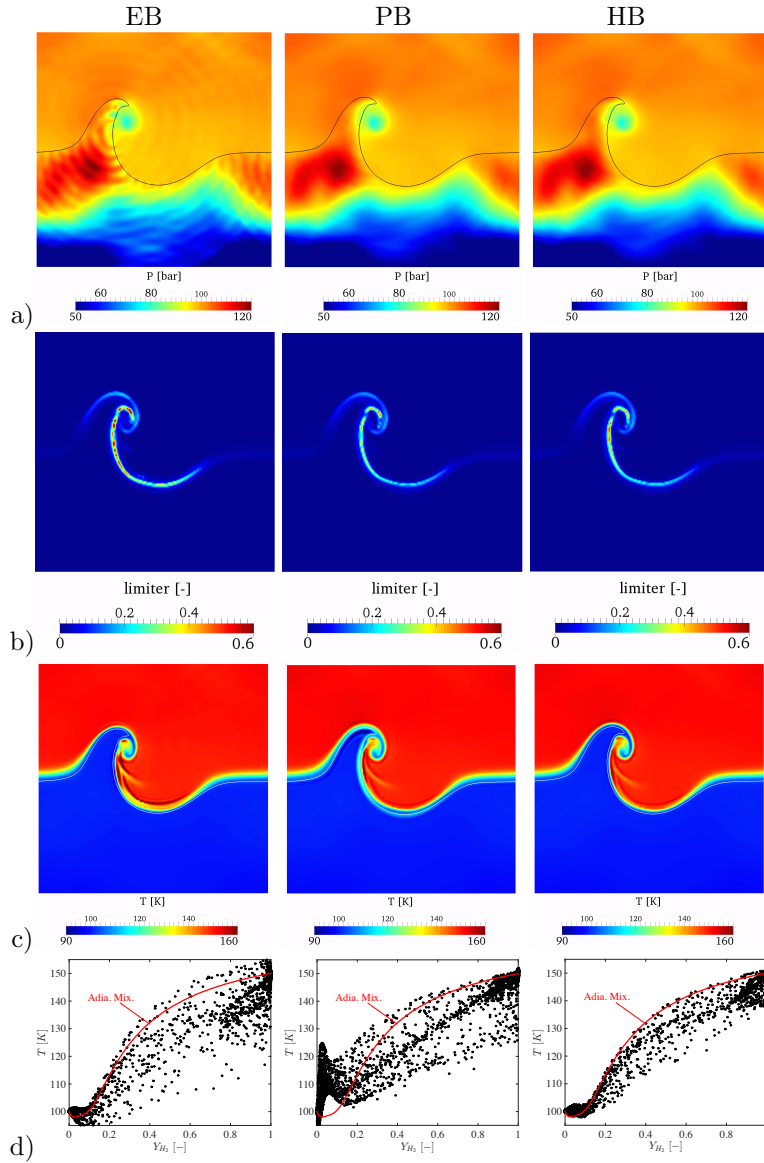


Figure 11: Vortex - density gradient interaction: impact of the EB, PB and HB methods on the instantaneous ($t = 2\mu s$) a) pressure, b) flux limiter ($limiter = 0$: *QUICK* scheme, $limiter = 1$: 1st order upwind scheme) and c) temperature fields, with scatter plots of temperature versus mass-fraction of hydrogen presented in d). In figures a) and c), the line is the $\rho = 500 \text{ kg/m}^3$ isoline.

4.4. Turbulent mixing layer

510 The last test case of this study is a more realistic configuration representing the early destabilization of the mixing layer forming between a dense stream of oxygen and a fast gas-like hydrogen stream at 100bar . This type of mixing layer occurs in rocket engines downstream of coaxial injectors where efficient mixing is obtained by the high shear generated between two injected streams. 515 This case was also previously studied by other groups [27, 36, 51, 52, 82, 79] and detailed quantitative data are available for comparison. Note that for this final case molecular diffusion is active and all aspects previously investigated are present in the flow (i.e., diffusion, pure advection of dense elements, and turbulence-density gradient interactions).

520 This test case replicates the computation two-dimensional benchmark studied by Ruiz *et al.* [79]. Their objective was to analyze the early destabilization of a LOX-GH2 mixing layer at rocket-like conditions using a near DNS grid resolution, and to provide a database for code comparison and validation. The dataset collected Ruiz *et al.* [79] contains results from a conservative and non- 525 conservative approach. Only data from the conservative approach were used here for the different statistical comparisons. In the present work, boundary conditions and computational domain are based on the description provided in [79] and presented in Figs. 12 a) and b). Thermodynamic and injection conditions are realistic compared to actual devices. The Reynolds number based 530 on the splitter height ($h = 0.5\text{ mm}$) is on the order of 500,000. No velocity fluctuations are imposed on inlet planes and velocity profiles follow a $1/7^{\text{th}}$ power law. The splitter is represented by an adiabatic wall condition. Pressure is imposed at the outlet. A sponge layer is employed downstream of $x = 20h$ to eliminate pressure oscillations potentially generated at the outlet. Top and 535 bottom boundaries are symmetries.

As strain rate reaches high values in the mixing layer, gradients are locally significant and numerical stabilization is required. As in the previous case, stabilization is provided by the numerical approach described in Section 3.4,

where a quasi non-dissipative *QUICK* scheme is used in smooth flow regions and
 540 a dissipative first-order accurate upwind scheme is applied in gradients. In the
 present study, the grid is coarser than in [79]: in the mixing zone ($-3 < y/h < 3$),
 the grid spacing is uniform ($\Delta_x/h = \Delta_y/h = 1/100$) against $\Delta_x/h = 1/250$
 in [79]. Outside the region of interest the grid is stretched at a rate of 0.1%. A
 total of 3.7 million cells was employed for this configuration.

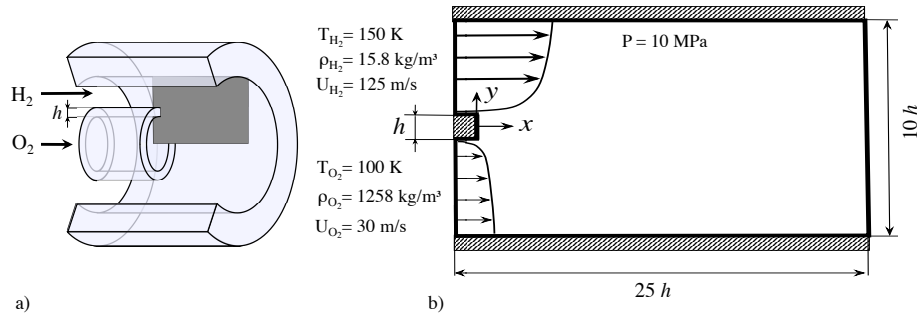


Figure 12: Mixing layer configuration and computational domain. a) Typical coaxial injector of a liquid rocket engine (the grey frame represents the two-dimensional simulation domain). b) Computational domain dimensions and boundary conditions ($h = 0.5\text{ mm}$).

545 In the following, instantaneous fields and temporal statistics (mean and root-mean square) are used to compare the three methods. Following recommendations from Ruiz and coworkers, a long period of fourteen flow-through time (based on the oxygen stream) was used to flush initialization transient and reach steady state. Time average statistics were then recorded for twenty flow-through times. Statistics were sampled along one-dimensional lines across the
 550 computational domain at the same locations as in [79] (i.e., $x/h = 1$, $x/h = 3$, $x/h = 5$ and $x/h = 7$).

Figure 13 presents the instantaneous flow fields of density and mass-fraction of hydrogen. Even if instantaneous fields appear different, the same dynamic
 555 mechanisms were observed in the three methods. Those processes have previously been detailed by Ruiz *et al.* [79], thus only a brief summary is reported here.

Initial vortical structures are generated by a Kelvin-Helmoltz instability ini-

560 tiated in the hydrogen stream downstream of the the backward-facing step. The subsequent vortical structures are convected against the density gradient at the oxygen interface. These impacts, coupled with baroclinic torque effects, induce interfacial instabilities at the surface of the oxygen stream, which grow as the flow evolves downstream. A coalescence process leads to the creation of larger structures that participate in further destabilizing the mixing layer. These large
565 vortical elements induce the rollup and elongation of dense structures from the oxygen.

The instantaneous snapshots presented in Fig. 13 were not chosen to topologically match each other. This explains why the mixing layer seems thicker in the EB approach than in the other cases as a large vortical structure is present
570 in the EB image and absent in the PB and HB results. This type of large structure being infrequent, has a small impact on the temporal statistics. Figures 14 presents the temporal statistics (mean and rms) of mass-fraction, density and velocities between the three approaches. Small differences can be detected in the U_{rms} profiles. The lower amplitudes of streamwise fluctuations are attributed
575 to a thicker outlet sponge-layer used in the present study compared to the reference simulations of Ruiz *et al.* [79]. One important aspect that does not appear in these statistics is the presence of an acoustic oscillation in the oxygen stream for the EB case.

Figure 15 shows how the EB approach generates significant local pressure
580 fluctuations compared to the other approaches. These fluctuations emanate from the density gradient region, where the stabilization method introduces most of the numerical dissipation. Figure 16 shows that the flux limiter is only active in the vicinity of the density gradient where the switch between numerical methods occurs. In contrast, no spurious pressure oscillations are observed
585 in flow-fields of the pressure-based and enthalpy based methods. For these approaches, pressure fluctuations are only generated by hydrodynamic processes in the mixing zone. Figure 17 shows the statistics of pressure. Mean pressure profiles compare closely between the three methods with a 0.1 % shift for the PB approach compared to the EB and HB formalisms. Pressure diminishes slightly

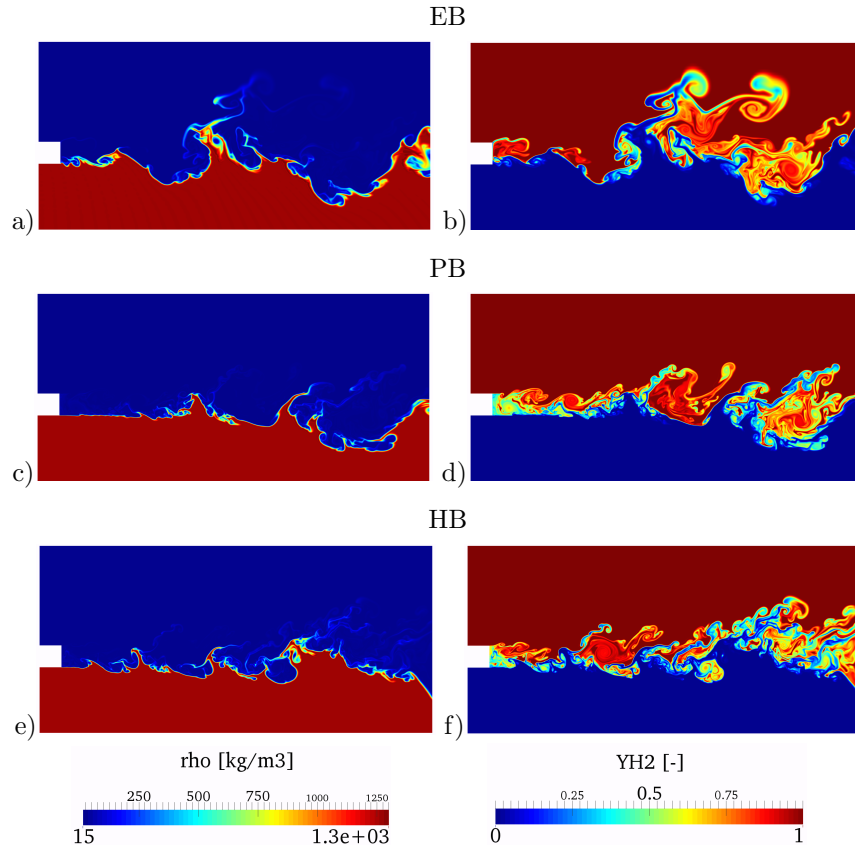


Figure 13: Comparison of density and hydrogen mass-fraction instantaneous fields computed with the three methods once flow dynamics reached steady state.

590 at the back of the splitter plate ($x/h = 1$) showing the foot-print of a recirculation zone in the wake of the splitter. Marked differences are however observed in the rms profiles presented in Fig. 17 b), where large pressure variations are recorded in the energy-based approach, while only small amplitude variations are detected in both PB and HB cases. The large pressure perturbations recorded
 595 in the EB case are the foot-print of a standing acoustic mode, triggered and fed by the spurious oscillations continuously generated in the gradient region. For sake of brevity the characterization of this sustained mode has not been included in the present work.

Finally, instantaneous and temporal statistics of temperature are analyzed.

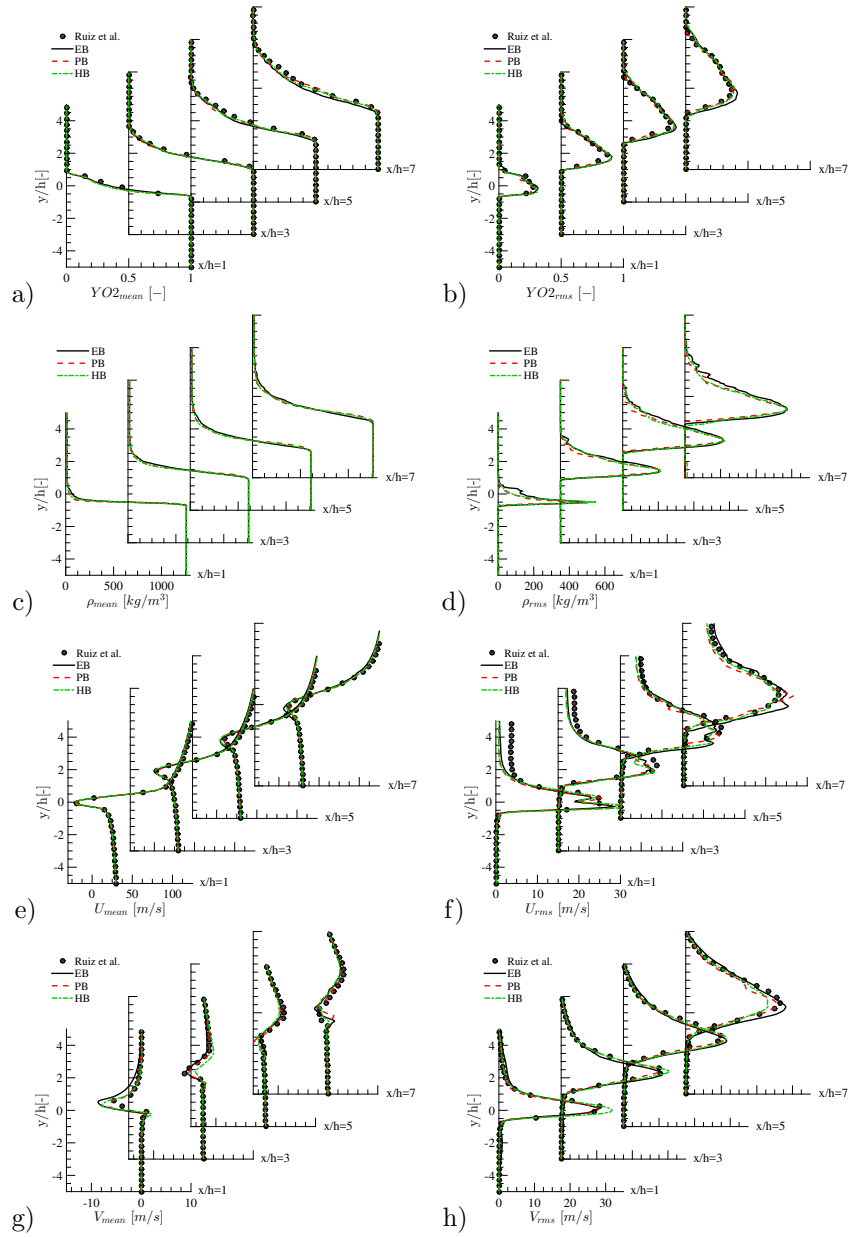


Figure 14: Statistical comparisons along one-dimensional transverse segments for oxygen mass fraction, density, axial and transverse velocities. Symbols: database from Ruiz *et al.* [79]. Note: no reference data available for density.

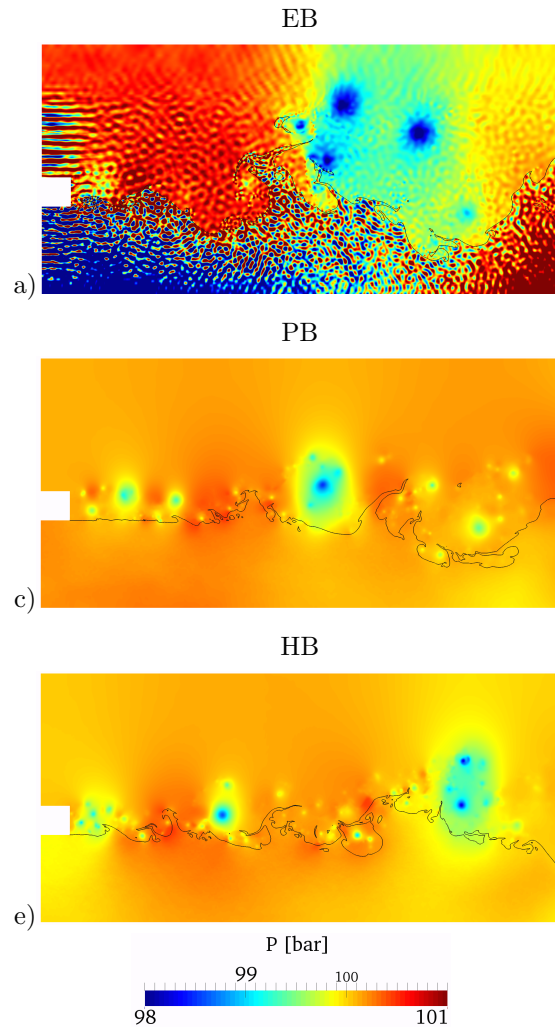


Figure 15: Comparison of instantaneous pressure fields between the three methods. The black iso-contour based on density ($\rho = 600 \text{ kg/m}^3$) localizes the density gradient.

600 The instantaneous temperature fields are shown in Fig. 18 along with the respective scatterplots in mass-fraction space. At first glance, all three methods result in very comparable temperature fields. However, the scatterplots indicate very different mixing behavior between the three approaches. It is worth noting that at current flow conditions, the Reynolds number is high ($Re = 500,000$) which

605 make the molecular diffusion play a limited role in the mixing process. Subse-

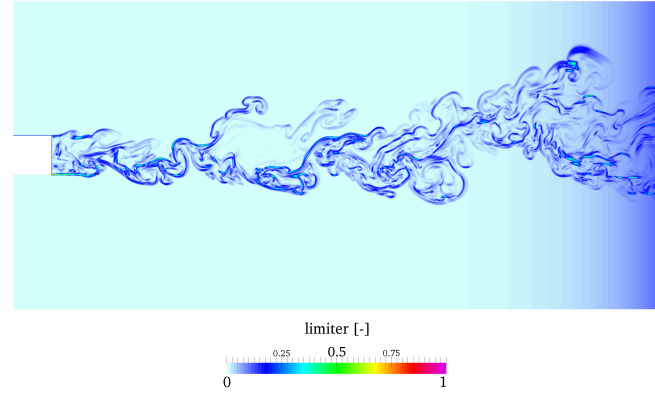


Figure 16: instantaneous field of limiter intensity used in the stabilization scheme. Only the EB case is reported here as all three methods are using the same limiter.

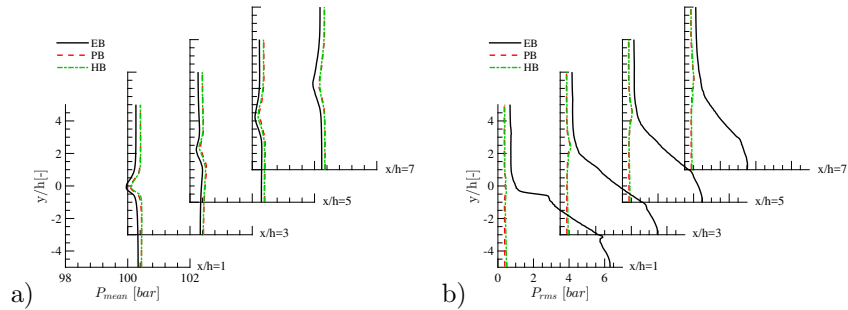


Figure 17: Comparisons of pressure mean and rms between the three approaches at different axial locations.

quent mixing depends predominantly on numerical dissipation as no turbulence closure is used for this study. This explains why in the EB and HB approaches, the temperature point clouds aggregate around the adiabatic mixing line, as previously observed in Section 4.3 In the PB method, however, mixture temperature is significantly increased in the gradient region since energy is created by the approach to dissipate density and mass-fractions without creating pressure fluctuation. Note that less scatter is observed with the HB approach than with the EB method. This is because higher levels of pressure fluctuations are observed in the energy-based case, which result in more local temperature fluctuations.

tuations due to compressibility effects. These marked differences can also be

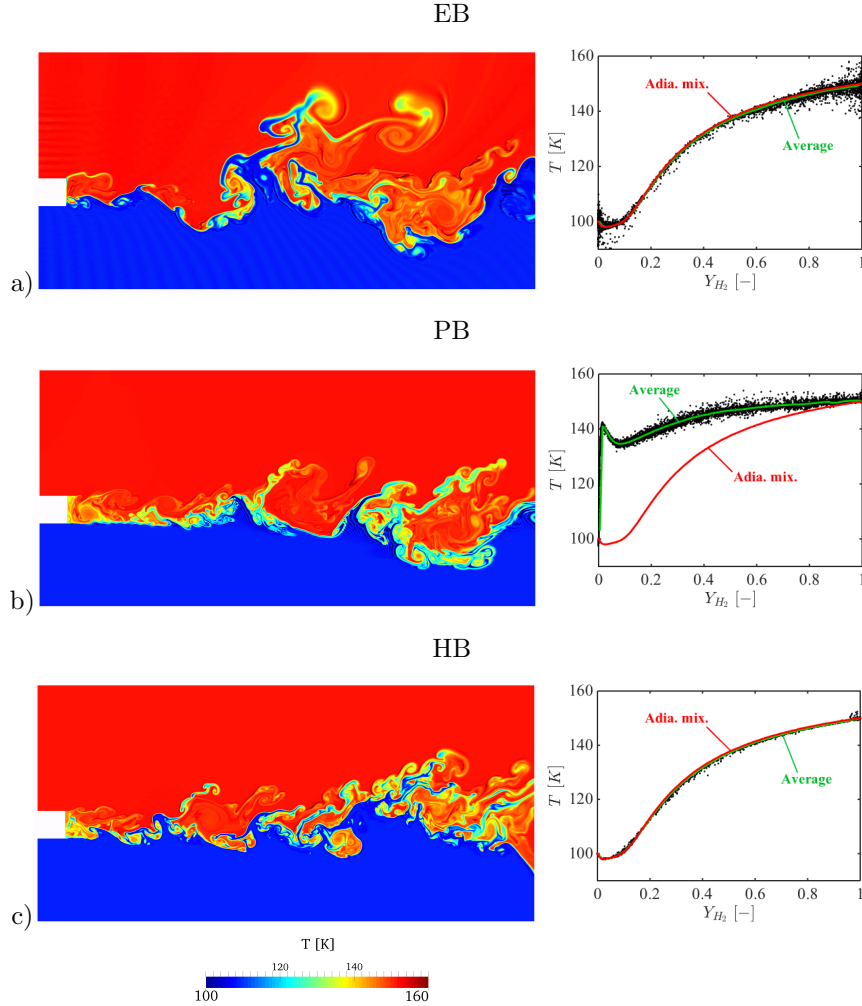


Figure 18: Comparison of instantaneous temperature fields obtained with the three different approaches. The associated scatterplots of temperature versus mass-fraction of hydrogen (Y_{H_2}) are presented on the right-hand side.

615

observed in the temporal statistics presented in Fig. 19 showing mean and rms of temperature at different downstream locations. One can see that the PB method predicts higher mean temperature values in the mixing layer and more skewed T_{rms} profiles than the EB and HB approaches. The higher temperatures

620 in mass-fraction space observed in Fig. 18 b) for the pressure-based approach,

result in a faster temperature transition between the two streams and a decrease in temperature intermittencies as less cold structures are generated. This leads to the skewed shape of T_{rms} for the PB method presented in Fig. 19 b).

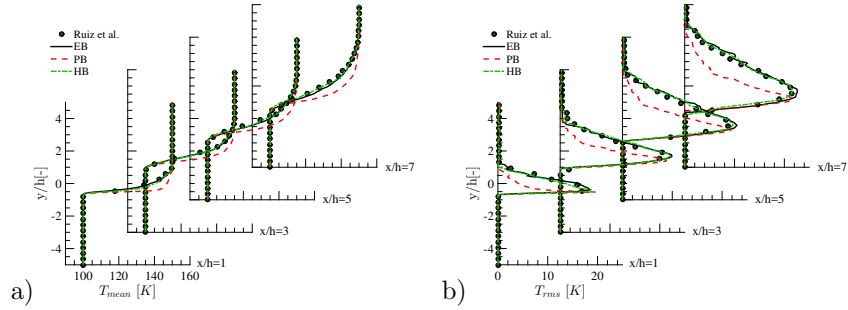


Figure 19: Comparisons of temperature mean and rms between the three approaches at different axial locations. Symbols: database from Ruiz *et al.* [79]

5. Conclusions

625 This investigation focuses on understanding the stability and mixing temperature issues encountered in transcritical flow simulations. Transcritical conditions are met when two fluids mix with thermodynamic states initially set on different sides of the pseudo-boiling line, and when the mean pressure is above the critical pressure of the mixture. At these conditions, thermodynamics exhibits a strong nonlinear behavior which translates to large Jacobian values in the mixing zone. This means that small variations in density and energy yield large pressure changes. This thermodynamic “sensitivity” significantly impacts the stability of flow solvers based on the conservative form of the Navier-Stokes equations (transport of density, total energy, momentum and species mass-
630 fractions). In such solvers, small variations in transported quantities caused by the numerical approach (e.g., numerical dissipation or explicit filtering) lead to non-physical pressure fluctuations that modify the flow dynamics and may result in erroneous predictions or even the divergence of the computation.

Many approaches have been proposed to solve this stability issue. The

640 present work provides a comparison of three methods that differ by the form of
the system of equations considered. The first approach (called energy-based) is
a classical fully-conservative approach based on the transport of density, total
energy, momentum and mass-fraction of species, and taken here as a reference.
The second approach is a pressure-based method where the energy equation is
645 replaced by an equation on pressure. In the last approach, the temporal evolu-
tion of enthalpy is obtained by combining two transport equations on pressure
and energy. In this manner, energy is transported, thus conserved, and spurious
pressure oscillations can be controlled via the pressure equation. This method
is however not fully conservative (enthalpy is not strictly conserved) since the
650 pressure equation is not used in its conservative form: the residual terms from
numerical dissipation have been intentionally removed from the equation to en-
sure dynamic stability.

These three methods have been implemented within the same numerical
framework to facilitate comparison. A series of tests cases of increasing com-
655 plexity has been considered to expose their different properties. Pure diffusion
tests showed that all three methods behave identically. Pure advection tests
revealed more marked differences. It was observed that if numerical dissipa-
tion was used, nonphysical pressure oscillations appeared in the predictions of
the energy-based method. The pressure-based method remained dynamically
660 stable since pressure is directly estimated from its transport equation which
is free of numerical dissipation terms. However, its mixture temperature pre-
diction significantly departed from the reference taken from the energy-based
method. This is due to fact that density and mass-fractions are dissipated by
the stabilization scheme while pressure remains constant. Thermodynamically
665 this is only possible if energy is locally generated, causing the temperature to
locally increase. The enthalpy-based formulation also provided oscillation-free
flow fields, as well as a good agreement for the mixture temperature in compar-
ison with the reference temperature from the fully-conservative approach. This
improvement in thermodynamic representation is attributed to the fact that
670 the transported enthalpy and density are used as inputs to the thermodynamic

scheme. This is not the case for the pressure-based method which uses transported pressure and density to reconstruct its thermodynamic state, with the pressure equation written in a nonconservative form. Conservation properties were also revealed in a shock test case where small errors in the shock positions
675 were measured with the pressure- and enthalpy-based approaches. Deviations were mitigated in the HB predictions thanks to the better representation of the thermodynamics state.

Similar behaviors were observed in two more complex configurations, a vortex-interface case and a mixing layer, both at rocket-like conditions. Results
680 revealed that in the case of the energy-based method, non-physical pressure oscillations were generated in regions where numerical dissipation is introduced by the stabilization scheme. In the mixing layer case, these artificial pressure fluctuations triggered and fed an acoustic oscillation which had significant impact on flow statistics, whereas pressure- and enthalpy-based predictions remained unaffected. A significant departure of the mixture temperature was
685 however observed with the pressure-based approach, contrary to the enthalpy-based method. In engineering applications, this erroneous thermodynamic state might impact predictions when slow chemical processes are key phenomena. This is the case in the estimation of the auto-ignition delay time of a diesel jet
690 at elevated pressure, or the simulation of rocket pre-burner reacting flows under very rich or very lean mixture conditions.

Appendix

Appendix A. Thermodynamics Jacobians

This appendix is dedicated to deriving the Jacobian terms $(\partial P/\partial \rho)_{\rho e}$ and
695 $(\partial P/\partial \rho e)_{\rho}$ in the case of a single species mixture.

Starting from the equations of Gibbs-Duhem [2] for density ρ and energy e for a single species system:

$$d\rho = \left(\frac{\partial \rho}{\partial T}\right)_P dT + \left(\frac{\partial \rho}{\partial P}\right)_T dP \quad (\text{A.1})$$

$$de = \left(\frac{\partial e}{\partial T} \right)_P dT + \left(\frac{\partial e}{\partial P} \right)_T dP \quad (\text{A.2})$$

For notation simplification we introduce for $\phi = \rho$ or e :

$$\left(\frac{\partial \phi}{\partial T} \right)_{P, Y_k} = \phi_T \quad (\text{A.3})$$

$$\left(\frac{\partial \phi}{\partial P} \right)_{T, Y_k} = \phi_P \quad (\text{A.4})$$

$$\left(\frac{\partial \phi}{\partial Y_k} \right)_{T, P} = \phi_k \quad (\text{A.5})$$

We also define:

$$e = h - \frac{P}{\rho} \quad (\text{A.6})$$

$$de = C_v dT + \left[T \left(\frac{\partial P}{\partial T} \right)_P - P \right] dV \quad (\text{A.7})$$

$$dh = C_p dT + \left[V - T \left(\frac{\partial V}{\partial T} \right)_P \right] dP \quad (\text{A.8})$$

From previous relations, Eq. A.2 can be recast as:

$$de = \left(C_p + \frac{P}{\rho^2} \rho_T \right) dT + \frac{1}{\rho^2} (P \rho_P + T \rho_T) dP \quad (\text{A.9})$$

and by combining Eq. A.1 and A.9 one can obtain:

$$de = \left(\frac{\rho C_p}{\rho_T} + h \right) d\rho - \left(\frac{\rho C_v \rho_P}{\rho_T} \right) dP \quad (\text{A.10})$$

Using the relation: $C_p - C_v = T \rho_T^2 / (\rho_P \rho^2)$, and developing $d\rho e = ed\rho + \rho de$, equation A.10 leads to the expression of the two Jacobians $(\partial P / \partial \rho)_{\rho e}$ and

700 $(\partial P / \partial \rho e)_\rho$:

$$dP = \left(-\frac{\rho_T}{\rho C_v \rho_P} \right) d\rho e + \left(\frac{\rho C_p + h \rho_T}{\rho C_v \rho_P} \right) d\rho \quad (\text{A.11})$$

Appendix B. Derivative relationships

This appendix brings details necessary for the derivation of the pressure-based approach presented in Section 3.2. Here, the key derivatives used in the

705 derivation are presented. Starting from the equation of Gibbs-Duhem [2] for density ρ and energy e :

$$d\rho = \left(\frac{\partial\rho}{\partial T}\right)_{P,Y_k} dT + \left(\frac{\partial\rho}{\partial P}\right)_{T,Y_k} dP + \sum_{k=1}^N \left(\frac{\partial\rho}{\partial Y_k}\right)_{P,T} dY_k \quad (\text{B.1})$$

$$de = \left(\frac{\partial e}{\partial T}\right)_{P,Y_k} dT + \left(\frac{\partial e}{\partial P}\right)_{T,Y_k} dP + \sum_{k=1}^N \left(\frac{\partial e}{\partial Y_k}\right)_{P,T} dY_k \quad (\text{B.2})$$

By introducing enthalpy: $e = h - P/\rho$ and the heat capacities [2]:

$$de = C_v dT - \frac{1}{\rho^2} \left[T \left(\frac{\partial P}{\partial T}\right)_\rho - P \right] d\rho \quad (\text{B.3})$$

$$dh = C_p dT + \left[\frac{1}{\rho} + \frac{T}{\rho^2} \left(\frac{\partial\rho}{\partial T}\right)_P \right] dP, \quad (\text{B.4})$$

we obtain the following derivatives:

$$e_T = C_p + \frac{P}{\rho^2} \rho_T \quad (\text{B.5})$$

$$e_P = -\frac{1}{\rho^2} \rho_P \left(T \frac{\partial P}{\partial T} - P \right) = \frac{1}{\rho^2} (P \rho_P + T \rho_T) \quad (\text{B.6})$$

Finally the Gibbs-Duhem system can be recast as:

$$d\rho = \rho_T dT + \rho_P dP + \sum_{k=1}^N \rho_k dY_k \quad (\text{B.7})$$

$$de = \left[C_p + \frac{P}{\rho^2} \rho_T \right] dT + \frac{1}{\rho^2} [P \rho_P + T \rho_T] dP + \sum_{k=1}^N \left[h_k + \frac{P}{\rho^2} \rho_k \right] dY_k \quad (\text{B.8})$$

By combining B.7 and B.8 one can extract the variations of temperature (dT) and pressure (dP) with respect to those of density ($d\rho$) energy (de) and species mass-fractions (dY_k):

$$de = \left[\frac{T \rho_T}{\rho^2} - \frac{\rho_P}{\rho_T} C_p \right] dP + \left[\frac{C_p}{\rho_T} + \frac{P}{\rho^2} \right] d\rho + \sum_{k=1}^N \left[h_k - \frac{C_p}{\rho_T} \rho_k \right] dY_k \quad (\text{B.9})$$

Using the relationship between the heat capacities [83]: $\frac{T\rho_T^2}{\rho^2\rho_P} = C_p - C_v$, equation B.9 can be recast as:

$$de = \left[-\frac{\rho_P}{\rho_T} C_v \right] dP + \left[\frac{C_p}{\rho_T} + \frac{P}{\rho^2} \right] d\rho + \sum_{k=1}^N \left[h_k - \frac{C_p}{\rho_T} \rho_k \right] dY_k \quad (\text{B.10})$$

This leads to the variation of pressure:

$$dP = \frac{C_p \rho^2 + P \rho_T}{C_v \rho_P \rho^2} d\rho - \frac{\rho_T}{\rho_P C_v} de + \sum_{k=1}^N \frac{\rho_T}{\rho_P C_v} \left[h_k - \frac{C_p}{\rho_T} \rho_k \right] dY_k \quad (\text{B.11})$$

and by introducing the speed of sound: $c^2 = C_p / (C_v \rho_P)$, the pressure variation reads:

$$dP = c^2 \left[1 + \frac{P \rho_T}{C_p \rho^2} \right] d\rho - \frac{\rho_T c^2}{C_p} de + \sum_{k=1}^N \frac{c^2}{C_p} [\rho_T h_k - C_p \rho_k] dY_k \quad (\text{B.12})$$

A similar relationship can be derived for dT by combining B.7 and B.8:

$$de = \frac{1}{\rho^2} \left[P + \frac{\rho^2}{\rho_T} (C_p - C_v) \right] d\rho + C_v dT + \sum_{k=1}^N \left[h_k - \frac{T \rho_T \rho_k}{\rho^2 \rho_P} \right] dY_k \quad (\text{B.13})$$

which, by introducing $\gamma = C_p / C_v$ leads to:

$$dT = - \left[\frac{P}{\rho^2 C_v} + \frac{\gamma - 1}{\rho_T} \right] d\rho + \frac{1}{C_v} de + \sum_{k=1}^N \left[\frac{T \rho_T \rho_k}{\rho^2 \rho_P C_v} - \frac{h_k}{C_v} \right] dY_k \quad (\text{B.14})$$

Appendix B.1. Pure-diffusion test case

The objective of this test case is to verify that all three methods provide similar results for pure diffusion, when no artificial dissipation or filtering is employed under transcritical conditions. A one-dimensional gradient between pure oxygen at 100K and gaseous hydrogen at 150K, is initialized at a pressure of 100bar. The physical domain is 2 μm long and the transition zone about 0.5 μm thick, described by 25 grid points. The domain is bounded by symmetry conditions. The schematic diagram of the computation is presented in Fig. B.20.

720

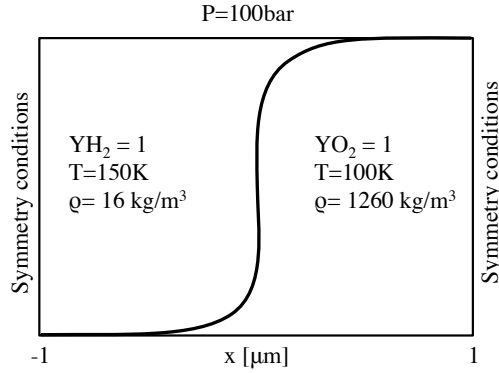


Figure B.20: Schematics of the one-dimensional diffusion test.

Figure B.21 shows the the evolution of keys quantities during the early dif-
 fusion transients predicted by the three methods. One can first observe that
 the three approaches are in good agreement with each other. Slight differences
 can be detected in the instantaneous pressure profiles. Pressure is evaluated
 by very different procedures between the three approaches, and the thermody-
 725 namics being very non-linear, these pressure differences are attributed to small
 numerical deviations. The drift in mean pressure can be explained by the re-
 laxation of energy between the two sides of the gradient (Fig. B.21 (d)). The
 system being closed and adiabatic, the total energy is conserved as well as
 730 mass. An equilibrium analysis shows that at the present conditions, a system
 containing one percent of hydrogen in volume has an asymptotic pressure of
 44bar and an asymptotic temperature of 98K. Present conditions also lead to
 a fast relaxation of the thermodynamic conditions, which results in significant
 instantaneous pressure and velocity variations (Fig. B.21 (e)).

In Figure B.21 (f), the adiabatic mixing line has been added. Adiabatic
 735 mixing is based on the assumption that the enthalpy varies linearly with mass-
 fraction, $h_{(T,Y)} = h_{(T_{O_2},Y_{O_2})} + Y_{H_2}(h_{(T_{H_2},Y_{H_2})} - h_{(T_{O_2},Y_{O_2})})$. By construction, the
 adiabatic mixing line shows the thermodynamic state of the mixture if energy
 and species diffuse at the same rate, which is equivalent to assuming unity Lewis
 740 numbers for the considered species. By adding this line to Fig. B.21 (f), one can

see that diffusion mixing of the $O_2 - H_2$ system is different from a unity Lewis number diffusion due to differential diffusion effects. In addition, the balance in sensible energy causes the temperature to locally (at $Y_{H_2} \approx 0.05$ in Fig. B.21 (f)) decrease below the initial minimum value. This test shows that the three approaches behave very similarly in the case of a pure diffusion process when no artificial dissipation is required for stabilization or explicit filtering is applied to the transported quantities.

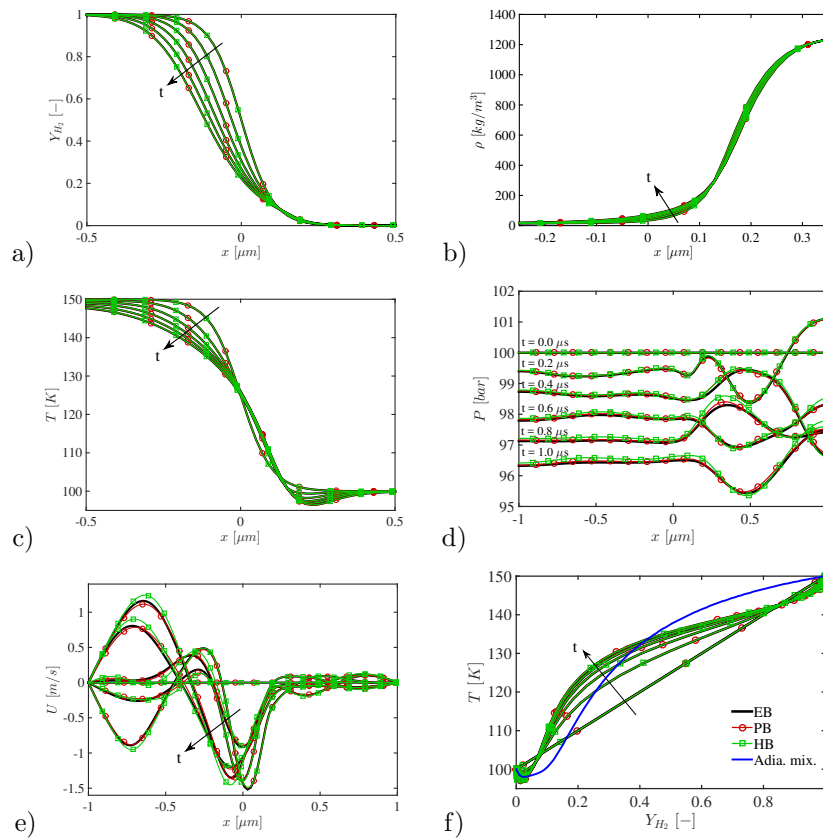


Figure B.21: 1D diffusion test: comparison between the EB (black lines), PB (red line with circles) and HB (green line with squares). In each figure, time is indicated by an arrow. Precise time marks are shown in Fig.B.21 (d). Note that Figs. (a), (b) and (c) have been zoomed in to get better details on the gradient region.

Appendix C. Stabilization approach

The present stabilization method is based on the composition of a high-
 750 order scheme and a robust upwind scheme [78]. Historically, such methods were
 developed to ensure stable solution of supersonic flows [84, 85]. In simplified
 notations, the inviscid flux \mathbf{F}_C on a given cell face can be expressed as:

$\mathbf{F}_C = \mathbf{F}_C^{high} + \nu(\mathbf{F}_C^{low} - \mathbf{F}_C^{high})$, where \mathbf{F}_C^{high} and \mathbf{F}_C^{low} are the contributions of
 the high-order and low-order schemes, respectively. ν is a sensor defined on the
 755 interval $0 \leq \nu \leq 1$. This term switches the truncation error from high-order
 accuracy when $\nu \rightarrow 0$, in smooth regions of the flow, to low-order accuracy
 when $\nu \rightarrow 1$ in shocks and steep gradients. In the present study, \mathbf{F}_C^{high} is the
 second-order accurate *QUICK* scheme (Quadratic Upstream Interpolation for
 Convective Kinematics) [77] and \mathbf{F}_C^{low} a first-order upwind scheme.

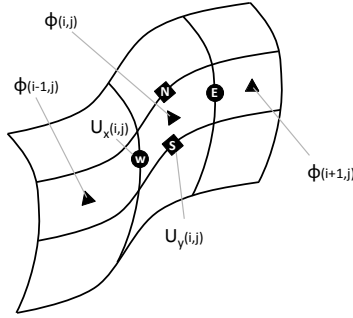


Figure C.22: Data storage in the present staggered formulation in a simplified two-dimensional example. ϕ is the vector of transported scalars, U_x and U_y are the velocities in the x- and y-curvilinear directions, respectively.

760 Practically, in the present solver, the convective flux (per unit area) for any
 convected quantity ϕ is evaluated using the following upwind approach:

$$\mathbf{F}_{C,\phi}^W = U_x^W \phi^L, \text{ if } U_x^W > 0, \quad (\text{C.1})$$

$$\mathbf{F}_{C,\phi}^W = U_x^W \phi^R, \text{ if } U_x^W < 0. \quad (\text{C.2})$$

The formulation for momentum terms is similar and thus not described here. Note, however, that cross-terms for momentum fluxes require an additional interpolation step.

The flux limiter is incorporated in the definition of ϕ^L and ϕ^R , defined here in an one-dimensional context:

$$\phi^L = \frac{1}{2}(\phi_i + \phi_{i-1}) - \frac{1 - \nu_{i-1/2}(\phi)}{8}(\phi_i - 2\phi_{i-1} + \phi_{i-2}) - \frac{\nu_{i-1/2}(\phi)}{2}(\phi_i - \phi_{i-1}), \quad (\text{C.3})$$

$$\phi^R = \frac{1}{2}(\phi_i + \phi_{i-1}) - \frac{1 - \nu_{i-1/2}(\phi)}{8}(\phi_{i+1} - 2\phi_i + \phi_{i-1}) - \frac{\nu_{i-1/2}(\phi)}{2}(\phi_i - \phi_{i-1}). \quad (\text{C.4})$$

One can observe that when $\nu_{i-1/2}(\phi) = 0$ (in smooth regions of the flow), the *QUICK* formulation is recovered:

$$\phi^L = \frac{1}{2}(\phi_i + \phi_{i-1}) - \frac{1}{8}(\phi_i - 2\phi_{i-1} + \phi_{i-2}) = \frac{3}{8}\phi_i + \frac{3}{4}\phi_{i-1} - \frac{1}{8}\phi_{i-2}, \quad (\text{C.5})$$

and in gradient zones, $\nu_{i-1/2}(\phi) = 1$, a stable first-order accurate upwind scheme is used:

$$\phi^L = \frac{1}{2}(\phi_i + \phi_{i-1}) - \frac{1}{2}(\phi_i - \phi_{i-1}) = \phi_{i-1} \quad (\text{C.6})$$

In practice, switch values are estimated at cell centroids and then interpolated at cell faces:

$$\nu_{i-1/2}(\phi) = \min\left(1, \max\left(0, \frac{\nu_i(\phi) + \nu_{i-1}(\phi)}{2}\right)\right) \quad (\text{C.7})$$

In the context of supercritical flows with large density gradients, the main challenge is to define an optimal switch ν that detects under-resolved region of the flow. Jorgenson and Turkel have compared the different existing switching approaches and have proposed a modified formulation of the van-Leer and van-Albada switches that present the best properties for hyperbolic problems [86]. Lacaze *et al.* [87] recently proposed a new sensor maintaining better symmetry properties. This switch is used in the present study.

Appendix D. Residual terms of the stabilization scheme in the pressure equation

In the PB and HB approaches, pressure oscillations are eliminated by removing the terms resulting from the artificial dissipation (from the stabilization

method) applied to the other conserved quantities (ρ , ρe , $\rho \mathbf{U}$, and ρY_k) in the pressure equation. The stabilization strategy used in the present work relies on upwinding the convective fluxes in gradient regions (see description in Appendix C). For a given transported quantity ϕ , the residual of the convective term can be decomposed into a centered term and a dissipation term. For example, in the case of a one-dimensional configuration with a left-to-right flow, a first order upwind residual (upwinded towards the left) would be written in delta form (for the cell of index i) as:

$$R_{1st\ O} = \frac{dt}{V_i} (\phi_i (SU)_{i+1/2} - \phi_{i-1} (SU)_{i-1/2}), \quad (D.1)$$

with dt the time step, V_i the volume of the cell of index i , $S_{i+1/2}$ the surface of the left cell face and $U_{i+1/2}$ the flow velocity normal to the left surface. This residual can be re-written as:

$$R_{1st\ O} = R_{centered} + R_{dissip\ \phi}, \quad (D.2)$$

with

$$R_{centered} = \frac{dt}{V_i} \left(\frac{\phi_{i+1} + \phi_i}{2} (SU)_{i+1/2} - \frac{\phi_i + \phi_{i-1}}{2} (SU)_{i-1/2} \right), \quad (D.3)$$

$$R_{dissip\ \phi} = -\frac{dt}{V_i} \left(\frac{\phi_{i+1} - \phi_i}{2} (SU)_{i+1/2} - \frac{\phi_i - \phi_{i-1}}{2} (SU)_{i-1/2} \right). \quad (D.4)$$

where $R_{dissip\ \phi}$ is the dissipation residual of the quantity ϕ produced by the 1st order accurate upwind scheme. When these terms are re-introduced in the pressure equation, the pressure-based recovers the behavior of the energy-based approach and dynamic stability is disrupted by the apparition of spurious pressure oscillations. These pressure source terms can be explicitly formulated as:

$$dP_{dissip\ \rho} = \left(\frac{\partial P}{\partial \rho} \right)_{\rho e, \rho \mathbf{U}, \rho Y_k} R_{dissip\ \rho} \quad (D.5)$$

$$dP_{dissip\ \rho e} = \left(\frac{\partial P}{\partial \rho e} \right)_{\rho, \rho \mathbf{U}, \rho Y_k} R_{dissip\ \rho e} \quad (D.6)$$

$$dP_{dissip\ \rho U_i} = \left(\frac{\partial P}{\partial \rho U_i} \right)_{\rho, \rho e, \rho U_j\ j \neq i, \rho Y_k} R_{dissip\ \rho U_i} \quad (D.7)$$

$$dP_{dissip\ \rho Y_k} = \left(\frac{\partial P}{\partial \rho Y_k} \right)_{\rho, \rho e, \rho \mathbf{U}, \rho Y_l\ l \neq k} R_{dissip\ \rho Y_k} \quad (D.8)$$

where:

$$\begin{aligned} \left(\frac{\partial P}{\partial \rho}\right)_{\rho e, \rho \mathbf{U}, \rho Y_k} &= \frac{c^2}{\rho C_p} \left[C_p \left(\rho + \sum_{k=1}^{N_s-1} Y_k \rho_{Y_k} \right) + \rho_T \left(h_t - \mathbf{U}^2 - \sum_{k=1}^{N_s-1} Y_k \mathcal{H}_k \right) \right] \\ \left(\frac{\partial P}{\partial \rho e}\right)_{\rho, \rho \mathbf{U}, \rho Y_k} &= -\frac{\rho_T c^2}{\rho C_p} \end{aligned} \quad (\text{D.10})$$

$$\left(\frac{\partial P}{\partial \rho U_i}\right)_{\rho, \rho e, \rho U_j, j \neq i, \rho Y_k} = U_i \frac{\rho_T c^2}{\rho C_p} \quad (\text{D.11})$$

$$\left(\frac{\partial P}{\partial \rho Y_k}\right)_{\rho, \rho e, \rho \mathbf{U}, \rho Y_l, l \neq k} = \frac{c^2}{\rho C_p} (\rho_T \mathcal{H}_k - \rho_{Y_k} C_p) \quad (\text{D.12})$$

In both the pressure-based and enthalpy-based approaches, these terms are intentionally removed from the pressure equation to avoid spurious oscillations.

785

Acknowledgments

Support for this research was provided by the U. S. Department of Energy (DOE), Office of Energy Efficiency and Renewable Energy (EERE), Vehicle Technologies (VT) program, under grant number VT0401000. Support was also
790 provided by the U.S. DOE Office of Basic Energy Sciences (BES) Division of Chemical Sciences, Geosciences, and Biosciences, under contract DE-AC04-94-AL85000. Sandia National Laboratories is operated and managed by National Technology and Engineering Solutions of Sandia, LLC., a wholly owned subsidiary of Honeywell International, Inc.

795 References

- [1] J. Hirschfelder, F. Curtiss, R. Bird, Molecular theory of gases and liquids, John Wiley & Sons, New York, 1964.
- [2] R. C. Reid, J. M. Prausnitz, B. E. Polling, The properties of liquids and gases, Vol. fourth ed., McGraw Hill, New York, 1987.
- 800 [3] M. Oswald, J. J. Smith, R. Branam, J. Hussong, A. Schik, B. Chehroudi, D. Talley, Injection of fluids into supercritical environments, Combustion science and technology 178 (1-3) (2006) 49–100.
- [4] R. N. Dahms, J. C. Oefelein, On the transition between two-phase and single-phase interface dynamics in multicomponent fluids at supercritical
805 pressures, Physics of Fluids 25 (092103) (2013) 1–24. doi:10.1063/1.4820346.
- [5] R. D. Woodward, D. G. Talley, Raman imaging of transcritical cryogenic propellants, AIAA paper 468 (1996) 1996.
- [6] J. Hickey, P. Ma, M. Ihme, S. Thakur, Large eddy simulation of shear coaxial rocket injector: Real fluid effects, in: 49th AIAA/ASME/SAE/ASEE
810 Joint Propulsion Conference, 2013, pp. 4071–4085.

- [7] H. Terashima, M. Koshi, Approach for simulating gas-liquid-like flows under supercritical pressures using a high-order central differencing scheme, *Journal of Computational Physics* 231 (20) (2012) 6907–6923.
- 815 [8] S. Kawai, H. Terashima, H. Negishi, A robust and accurate numerical method for transcritical turbulent flows at supercritical pressure with an arbitrary equation of state, *Journal of Computational Physics* 300 (2015) 116–135.
- [9] T. Schmitt, L. Selle, A. Ruiz, B. Cuenot, Large-eddy simulation of
820 supercritical-pressure round jets, *AIAA journal* 48 (9) (2010) 2133–2144.
- [10] L. Cutrone, M. Ihme, M. Herrmann, Modeling of high-pressure mixing and combustion in liquid rocket injectors, in: *Proceedings of the Summer Program, Center for Turbulence Research, NASA AMES, Stanford University, USA, 2006*, pp. 269–282.
- 825 [11] S. Pohl, M. Jarczyk, M. Pfitzner, B. Rogg, Real gas CFD simulations of hydrogen/oxygen supercritical combustion, in: *Progress in Propulsion Physics, Vol. 4*, EDP Sciences, 2013, pp. 583–614.
- [12] F. Demoulin, S. Zurbach, A. Mura, High-pressure supercritical turbulent cryogenic injection and combustion: A single-phase flow modeling proposal,
830 *Journal of Propulsion and Power* 25 (2) (2009) 452–464.
- [13] M. Poschner, M. Pfitzner, CFD-Simulation of the Injection and Combustion of LOX and H₂ at Supercritical Pressures, *American Institute of Aeronautics and Astronautics*, 2010, pp. 1144–1156. doi:10.2514/6.2010-1144.
- [14] L. Qiu, R. D. Reitz, Simulation of supercritical fuel injection with condensation,
835 *International Journal of Heat and Mass Transfer* 79 (2014) 1070–1086.
- [15] D. T. Banuti, K. Hannemann, Supercritical Pseudo-Boiling and its Relevance for Transcritical Injection, *American Institute of Aeronautics and Astronautics*, 2014, pp. 2014–3571. doi:10.2514/6.2014-3571.

- [16] D. Banuti, K. Hannemann, The absence of a dense potential core in supercritical injection: A thermal break-up mechanism, *Physics of Fluids* 28 (3) (2016) 035103.
- [17] D. Banuti, V. Hannemann, K. Hannemann, B. Weigand, An efficient multi-fluid-mixing model for real gas reacting flows in liquid propellant rocket engines, *Combustion and Flame* 168 (2016) 98–112.
- [18] J. Bellan, Supercritical (and subcritical) fluid behavior and modeling : drops, streams, shear and mixing layers, jets and sprays, *Progress in Energy and Combustion Science* 26 (2000) 329–366, eR.
- [19] R. Miller, K. Harstad, J. Bellan, Direct numerical simulations of supercritical fluid mixing layers applied to heptane-nitrogen, *Journal of Fluid Mechanics* 436 (6) (2001) 1–39.
- [20] N. Okong’o, J. Bellan, Consistent boundary conditions for multicomponent real gas mixtures based on characteristic waves, *Journal of Computational Physics* 176 (2002) 330–344.
- [21] N. Okong’o, J. Bellan, Consistent large-eddy simulation of a temporal mixing layer laden with evaporating drops. part 1. direct numerical simulation, formulation and a priori analysis, *Journal of Fluid Mechanics* 499 (2004) 1–47.
- [22] J. Bellan, Theory, modeling and analysis of turbulent supercritical mixing, *Combustion science and technology* 178 (1-3) (2006) 253–281.
- [23] E. Masi, J. Bellan, K. G. Harstad, N. A. Okong’o, Multi-species turbulent mixing under supercritical-pressure conditions: modelling, direct numerical simulation and analysis revealing species spinodal decomposition, *Journal of Fluid Mechanics* 721 (2013) 578–626.
- [24] J. Foster, R. S. Miller, A priori analysis of subgrid mass diffusion vectors in high pressure turbulent hydrogen/oxygen reacting shear layer flames, *Physics of Fluids* 24 (7) (2012) 075114.

- [25] C. B. da Silva, G. Balarac, O. Metais, Transition in high velocity ratio coaxial jets analysed from direct numerical simulations, *Journal of Turbulence* 4 (24) (2003) 1–18.
- 870 [26] H. Tani, S. Teramoto, N. Yamanishi, K. Okamoto, A numerical study on a temporal mixing layer under transcritical conditions, *Computers & Fluids* 85 (2013) 93–104.
- [27] J. C. Oefelein, V. Yang, Modeling High-Pressure Mixing and Combustion Processes in Liquid Rocket Engines, *Journal of Propulsion and Power* 14 (5) (1998) 843–857.
- 875 [28] N. Zong, G. Ribert, V. Yang, A flamelet approach for modeling of liquid oxygen (lox)/methane at supercritical pressures, in: Forty-sixth AIAA aerospace sciences meeting and exhibit, AIAA, Vol. 946, 2008, pp. 1–16.
- [29] X. Petit, G. Ribert, G. Lartigue, P. Domingo, Large-eddy simulation of supercritical fluid injection, *The Journal of Supercritical Fluids* 84 (2013) 61–73.
- 880 [30] G. Lacaze, A. Misdariis, A. Ruiz, J. C. Oefelein, Analysis of high-pressure diesel fuel injection processes using LES with real-fluid thermodynamics and transport, *Proceeding of the Combustion Institute* 35 (2015) 1603–1611. doi:10.1016/j.proci.2014.06.072.
- 885 [31] N. Tramecourt, M. Masquelet, S. Menon, Large-eddy simulation of unsteady wall heat transfer in a high pressure combustion chamber, in: 41 st AIAA/ASME/SAE/ASEE Joint Propulsion Conference & Exhibit, 2005, pp. 1–17.
- 890 [32] X. Petit, G. Ribert, P. Domingo, Lox/ch4 mixing and combustion under supercritical conditions, in: 51st AIAA Aerospace Sciences Meeting including the New Horizons Forum and Aerospace Exposition, 2013, pp. 713–723.

- [33] N. Tramecourt, S. Menon, J. Amaya, LES of supercritical combustion in a gas turbine engine, in: 40th AIAA/ASME/SAE/ASEE Joint Propulsion Conference and Exhibit, 2004, pp. 3381–3392.
- [34] S. Matsuyama, J. Shinjo, S. Ogawa, Y. Mizobuchi, Large eddy simulation of lox/gh2 shear-coaxial jet flame at supercritical pressure, in: 48th AIAA Aerospace Sciences Meeting Including the New Horizons Forum and Aerospace Exposition, 2010, pp. 208–218.
- [35] S. Matsuyama, Correlation of optical emission and turbulent length scale in a coaxial jet diffusion flame, *Combustion and Flame* 161 (4) (2014) 937–949.
- [36] J. C. Oefelein, Thermophysical characteristics of shear-coaxial LOX–H2 flames at supercritical pressure, *Proceedings of the Combustion Institute* 30 (2) (2005) 2929–2937.
- [37] J. C. Oefelein, LES of Supercritical LOX-H2 Injection and Combustion in a Shear-Coaxial Uni-Element Rocket, *American Institute of Aeronautics and Astronautics*, 2003, pp. 1–13. doi:10.2514/6.2003-479.
- [38] J. C. Oefelein, Mixing and combustion of cryogenic oxygen-hydrogen shear-coaxial jet flames at supercritical pressure, *Combustion Science and Technology* 178 (1-3) (2006) 229–252.
- [39] S. Matsuyama, J. Shinjo, Y. Mizobuchi, S. Ogawa, A numerical investigation on shear coaxial lox/gh2 jet flame at supercritical pressure, in: 44th AIAA Aerospace Sciences Meeting and Exhibit, 2006, pp. 761–772.
- [40] R. Smith, G. Xia, W. A. Anderson, C. L. Merkle, Computational simulations of the effect of backstep height on nonpremixed combustion instability, *AIAA Journal* 48 (9) (2010) 1857–1868. doi:10.2514/1.40385.
- [41] T. S. Park, LES and RANS simulations of cryogenic liquid nitrogen jets, *The Journal of Supercritical Fluids* 72 (2012) 232 – 247. doi:http://dx.doi.org/10.1016/j.supflu.2012.09.004.

- [42] H. Müller, M. Pfitzner, J. Matheis, S. Hickel, Large-eddy simulation of coaxial LN₂/GH₂ injection at trans-and supercritical conditions, *Journal of Propulsion and Power* 32 (1) (2015) 46–56.
- [43] J. Matheis, H. Müller, C. Lenz, M. Pfitzner, S. Hickel, Volume translation methods for real-gas computational fluid dynamics simulations, *The Journal of Supercritical Fluids* 107 (2016) 422–432.
- [44] H. Meng, V. Yang, A unified treatment of general fluid thermodynamics and its application to a preconditioning scheme, *Journal of Computational Physics* 189 (1) (2003) 277–304. doi:10.1016/S0021-9991(03)00211-0.
- [45] M. Masquelet, S. Menon, Y. Jin, R. Friedrich, Simulation of unsteady combustion in a LOX-GH₂ fueled rocket engine, *Aerospace Science and Technology* 13 (8) (2009) 466–474.
- [46] X. Wang, V. Yang, Supercritical mixing and combustion of liquid-oxygen/kerosene bi-swirl injectors, *Journal of Propulsion and Power* 33 (2) (2016) 316–322.
- [47] H. Huo, V. Yang, Large-eddy simulation of supercritical combustion: Model validation against gaseous h₂-o₂ injector, *Journal of Propulsion and Power* 33 (5) (2017) 1272–1284. doi:10.2514/1.B36368.
URL <https://doi.org/10.2514/1.B36368>
- [48] H. Terashima, S. Kawai, N. Yamanishi, High-resolution numerical method for supercritical flows with large density variations, *AIAA journal* 49 (12) (2011) 2658–2672.
- [49] N. Zong, H. Meng, S. Hsieh, V. Yang, A numerical study of cryogenic fluid injection and mixing under supercritical conditions, *Physics of Fluids* 16 (2004) 4248–4261.
- [50] N. Zong, V. Yang, A Numerical study of high-pressure oxygen/methane mixing and combustion of a shear coaxial injector, in: 43rd AIAA Aerospace Sciences Meeting and Exhibit, Vol. 152, 2005, pp. 1–15.

- 950 [51] N. Zong, V. Yang, Cryogenic fluid jets and mixing layers in transcritical and supercritical environments, *Combustion Science and Technology* 178 (1-3) (2006) 193–227.
- [52] N. Zong, V. Yang, Near-field flow and flame dynamics of lox/methane shear-coaxial injector under supercritical conditions, *Proceedings of the Combustion Institute* 31 (2) (2007) 2309–2317.
- 955 [53] T. Schmitt, Y. Méry, M. Boileau, S. Candel, Large-eddy simulation of oxygen/methane flames under transcritical conditions, *Proceedings of the Combustion Institute* 33 (1) (2011) 1383–1390.
- [54] T. Schmitt, J. Rodriguez, I. Leyva, S. Candel, Experiments and numerical simulation of mixing under supercritical conditions, *Physics of Fluids* 24 (5) 960 (2012) 055104–055104.
- [55] L. Selle, T. Schmitt, Large-eddy simulation of single-species flows under supercritical thermodynamic conditions, *Combustion Science and Technology* 182 (4-6) (2010) 392–404.
- [56] L. Hakim, A. Ruiz, T. Schmitt, M. Boileau, G. Staffelbach, S. Ducruix, 965 B. Cuenot, S. Candel, Large eddy simulations of multiple transcritical coaxial flames submitted to a high-frequency transverse acoustic modulation, *Proceedings of the Combustion Institute* 35 (2) (2015) 1461–1468.
- [57] A. Urbano, L. Selle, G. Staffelbach, B. Cuenot, T. Schmitt, S. Ducruix, 970 S. Candel, Exploration of combustion instability triggering using large eddy simulation of a multiple injector liquid rocket engine, *Combustion and Flame* 169 (2016) 129–140.
- [58] P. Ma, L. Bravo, M. Ihme, Supercritical and transcritical real-fluid mixing in diesel engine applications, in: *Proceeding of the Summer Program 2014*, CTR Stanford, 2014, pp. 99–108.

- 975 [59] E. Rinaldi, R. Pecnik, P. Colonna, Exact jacobians for implicit navier–
stokes simulations of equilibrium real gas flows, *Journal of Computational
Physics* 270 (2014) 459–477.
- [60] E. Taşkinoğlu, J. Bellan, Subgrid-scale models and large-eddy simulation of
oxygen stream disintegration and mixing with a hydrogen or helium stream
980 at supercritical pressure, *Journal of Fluid Mechanics* 1 (1) (2011) 1–38.
- [61] L. Selle, N. Okong’o, J. Bellan, K. Harstad, Modelling of subgrid-scale
phenomena in supercritical transitional mixing layers: an a priori study,
Journal of Fluid Mechanics 593 (1) (2007) 57–91.
- [62] S. Karni, Hybrid multifluid algorithms, *SIAM Journal on Scientific Com-
puting* 17 (5) (1996) 1019–1039.
985
- [63] H. Terashima, M. Koshi, Unique characteristics of cryogenic nitrogen jets
under supercritical pressures, *Journal of Propulsion and Power* 29 (6)
(2013) 1328–1336.
- [64] M.-M. Jarczyk, M. Pfitzner, Large Eddy Simulation of Supercritical Nitro-
gen Jets, American Institute of Aeronautics and Astronautics, 2012, pp.
990 1–13. doi:10.2514/6.2012-1270.
- [65] J. Matheis, H. Müller, M. Pfitzner, S. Hickel, Large Eddy Simulation
of Cryogenic Coaxial LN₂/GH₂ Injection Under Supercritical Pressures,
in: *International Symposium on Turbulence and Shear Flow Phenomena*
995 (TSFP-9), Melbourne, Australia, 2015, pp. 1–6.
- [66] C. Pantano, R. Saurel, T. Schmitt, An oscillation free shock-capturing
method for compressible van der Waals supercritical fluid flows, *Journal of
Computational Physics* 335 (2017) 780–811.
- [67] D. Y. Peng, D. B. Robinson, A new two-constant equation of state, *Indus-
trial & Engineering Chemistry Fundamentals* 15 (1) (1976) 59–64.
1000

- [68] P. Linstrom, W. Mallard, NIST Chemistry WebBook, NIST Standard Reference database, Vol. 69, National Institute of Standards and Technology (NIST), Gaithersburg MD, 20899, 2005.
URL <http://webbook.nist.gov>
- 1005 [69] S. Gordon, B. J. McBride, Computer program for calculation of complex chemical equilibrium compositions, rocket performance, incident and reflected shocks, and Chapman-Jouguet detonations, Tech. Rep. SP-273, NASA (1971).
- [70] R. J. Kee, F. M. Rupley, J. A. Miller, Chemkin-ii: a fortran chemical
1010 kinetics package for the analysis of gas-phase chemical kinetics, Tech. rep., Sandia National Laboratories (1991).
- [71] T. Poinso, D. Veynante, Theoretical and numerical combustion, R.T. Edwards, 2nd edition., 2005.
- [72] J. Ely, H. J. M. Hanley, Prediction of transport properties. 2. Thermal conductivity of pure fluids and mixtures, Industrial & Engineering Chemistry
1015 Fundamentals 22 (1) (1983) 90–97.
- [73] S. Takahashi, Preparation of a generalized chart for the diffusion coefficients of gases at high pressures, journal of Chemical Engineering of Japan 7 (6) (1974) 417–420.
- 1020 [74] R. Bird, W. Stewart, E. Lighfoot, Transport phenomena, John Wiley, New York, 1960.
- [75] A. Jameson, W. Schmidt, E. Turkel, Numerical solution of the euler equations by finite volume methods using runge kutta time stepping schemes, in: 14th Fluid and Plasma Dynamics Conference, American Institute of
1025 Aeronautics and Astronautics, 1981, pp. 1259–1278. doi:10.2514/6.1981-1259.

- [76] A. L. Gaitonde, A dual-time method for two-dimensional unsteady incompressible flow calculations, *International journal for numerical methods in engineering* 41 (6) (1998) 1153–1166.
- 1030 [77] B. Leonard, A stable and accurate convective modelling procedure based on quadratic upstream interpolation, *Computer Methods in Applied Mechanics and Engineering* 19 (1) (1979) 59 – 98. doi:[http://dx.doi.org/10.1016/0045-7825\(79\)90034-3](http://dx.doi.org/10.1016/0045-7825(79)90034-3).
- 1035 [78] R. C. Swanson, E. Turkel, On central-difference and upwind schemes, *Journal of Computational Physics* 101 (2) (1992) 292 – 306. doi:[10.1016/0021-9991\(92\)90007-L](https://doi.org/10.1016/0021-9991(92)90007-L).
- [79] A. M. Ruiz, G. Lacaze, J. C. Oefelein, R. Mari, B. Cuenot, L. Selle, T. Poinot, Numerical benchmark for high-reynolds-number supercritical flows with large density gradients, *AIAA Journal* 54 (5) (2015) 1445–1460. doi:[10.2514/1.J053931](https://doi.org/10.2514/1.J053931).
- 1040 [80] G. Sod, A survey of several finite difference methods for systems of nonlinear hyperbolic conservation laws, *Journal of Computational Physics* 27 (1) (1978) 1–31.
- [81] R. Prosser, Improved boundary conditions for the direct numerical simulation of turbulent subsonic flows. I. Inviscid flows, *Journal of Computational Physics* 207 (2) (2005) 736–768.
- 1045 [82] J. Oefelein, Large eddy simulation of turbulent combustion processes in propulsion and power systems, *Progress in Aerospace Sciences* 42 (1) (2006) 2–37.
- 1050 [83] G. J. Van Wylen, R. E. Sonntag, *Fundamentals of classical thermodynamics*, 3rd Edition, Wiley, New York, 1986.
- [84] P. Roe, Approximate Riemann solvers, parameter vectors and difference schemes, *Journal of Computational Physics* 43 (1981) 357–372.

- [85] B. Van Leer, Towards the ultimate conservative difference scheme IV. A
1055 new approach to numerical convection, *Journal of Computational Physics*
23 (1977) 276–299.
- [86] P. Jorgenson, E. Turkel, Central Difference TVD Schemes for Time Depen-
dent and Steady State Problems, *Journal of Computational Physics* 107 (2)
(1993) 297 – 308. doi:10.1006/jcph.1993.1145.
- 1060 [87] G. Lacaze, J. C. Oefelein, Modeling high-density-gradient flows at su-
percritical pressures, in: 49th AIAA/ASME/SAE/ASEE Joint Propulsion
Conference, American Institute of Aeronautics and Astronautics, 2013, pp.
3717–3734. doi:10.2514/6.2013-3717.