



**HAL**  
open science

## Geostatistical analyses of fluvial deposits in valleys: a lever for the restoration large river systems

Benoit Deleplancque, Aurélien Lacoste, Stéphane Rodrigues, Gaëlle Le Loc'H

► **To cite this version:**

Benoit Deleplancque, Aurélien Lacoste, Stéphane Rodrigues, Gaëlle Le Loc'H. Geostatistical analyses of fluvial deposits in valleys: a lever for the restoration large river systems. 11th River, Coastal and Estuarine Morphodynamics Symposium, Dec 2019, Auckland, New Zealand. hal-02407825

**HAL Id: hal-02407825**

**<https://hal.science/hal-02407825>**

Submitted on 12 Dec 2019

**HAL** is a multi-disciplinary open access archive for the deposit and dissemination of scientific research documents, whether they are published or not. The documents may come from teaching and research institutions in France or abroad, or from public or private research centers.

L'archive ouverte pluridisciplinaire **HAL**, est destinée au dépôt et à la diffusion de documents scientifiques de niveau recherche, publiés ou non, émanant des établissements d'enseignement et de recherche français ou étrangers, des laboratoires publics ou privés.

# Geostatistical analyses of fluvial deposits in valleys: a lever for the restoration large river systems

B. Deleplancque<sup>1</sup>, S. Rodrigues<sup>1,2</sup>, A. Lacoste<sup>3</sup>, G. Le Loc'h<sup>4</sup>

<sup>1</sup> UMR CNRS 7324 CITERES, University of Tours, Tours, France. benoit.deleplancque@univ-tours.fr  
<sup>2</sup> Graduate School of Engineering Polytech Tours, University of Tours, Tours, France. srodrigues@univ-tours.fr  
<sup>3</sup> EA 6293 GÉHCO, University of Tours, Tours, France. lacoste@univ-tours.fr  
<sup>4</sup> Mines ParisTech, Center of geosciences, Fontainebleau, France. Gaelle.le\_loch@mines-paristech.fr

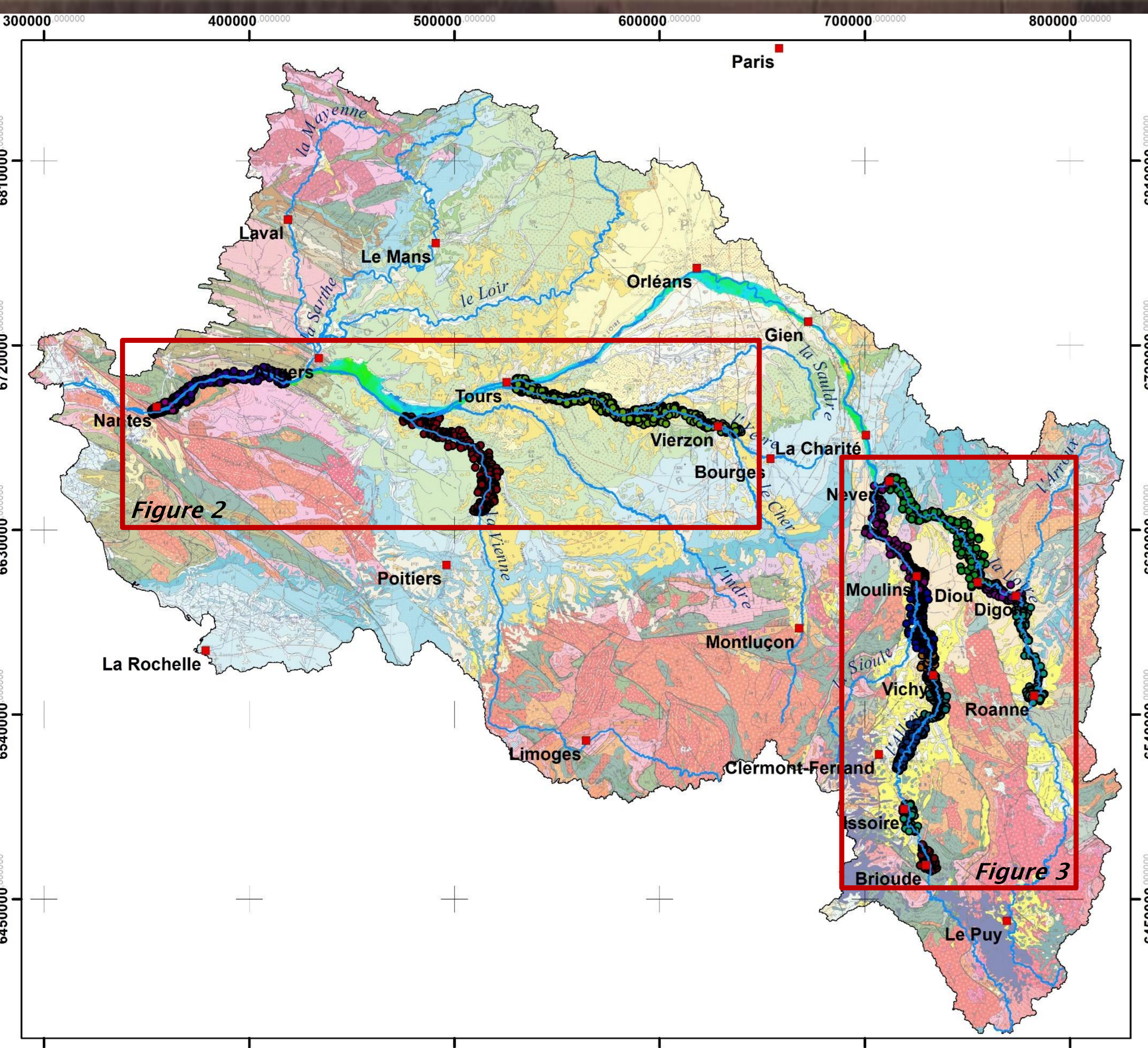


Figure 1: Map of the Loire catchment

## 1. Introduction

In modern alluvial systems, sedimentary continuity is a prerequisite to ecological restoration. The mobilizable sediment load is predominantly supplied by upstream inputs and available stocks in the main and tributary valleys.

The aim of this study (COSAL project) is to quantify the sediments stored in the valley of the largest river in France (the Loire) and its main tributaries (fig.1) to define potential river reaches where restoration works could be done in the future to restore sediment continuity

## 2. Methodology

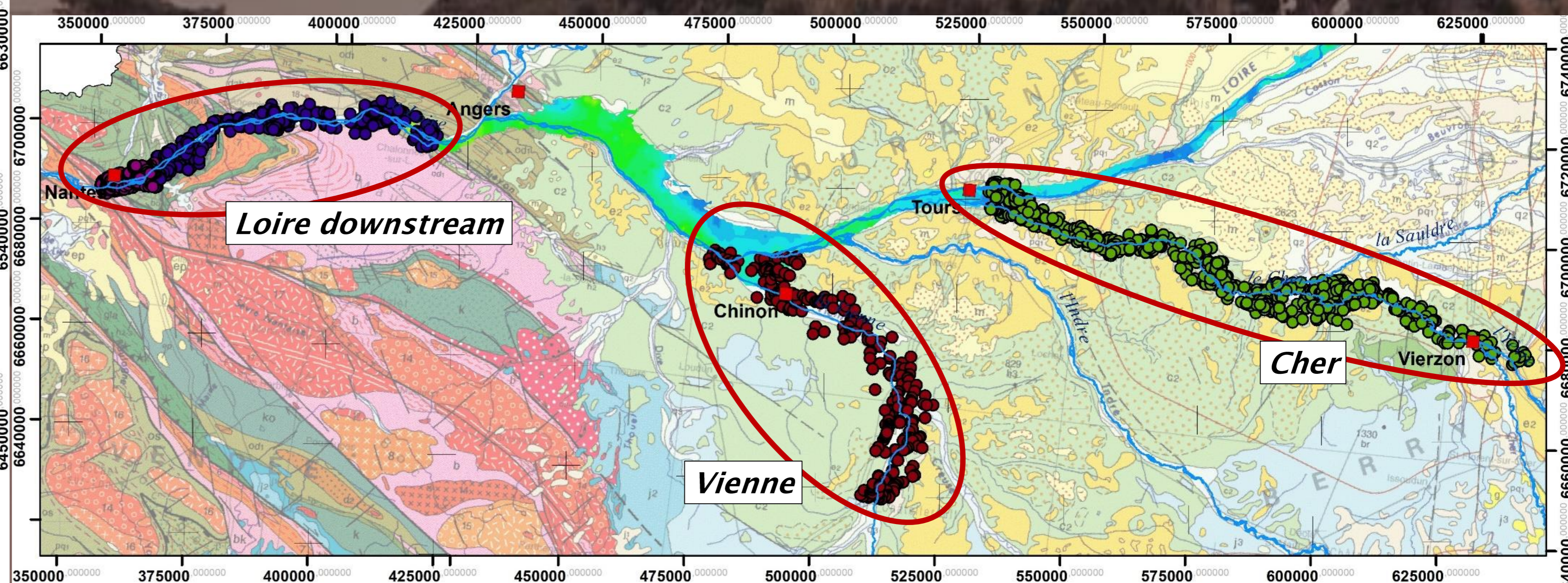


Figure 2: Boreholes geographic coverage on the Loire downstream, the Vienne and the Cher rivers.

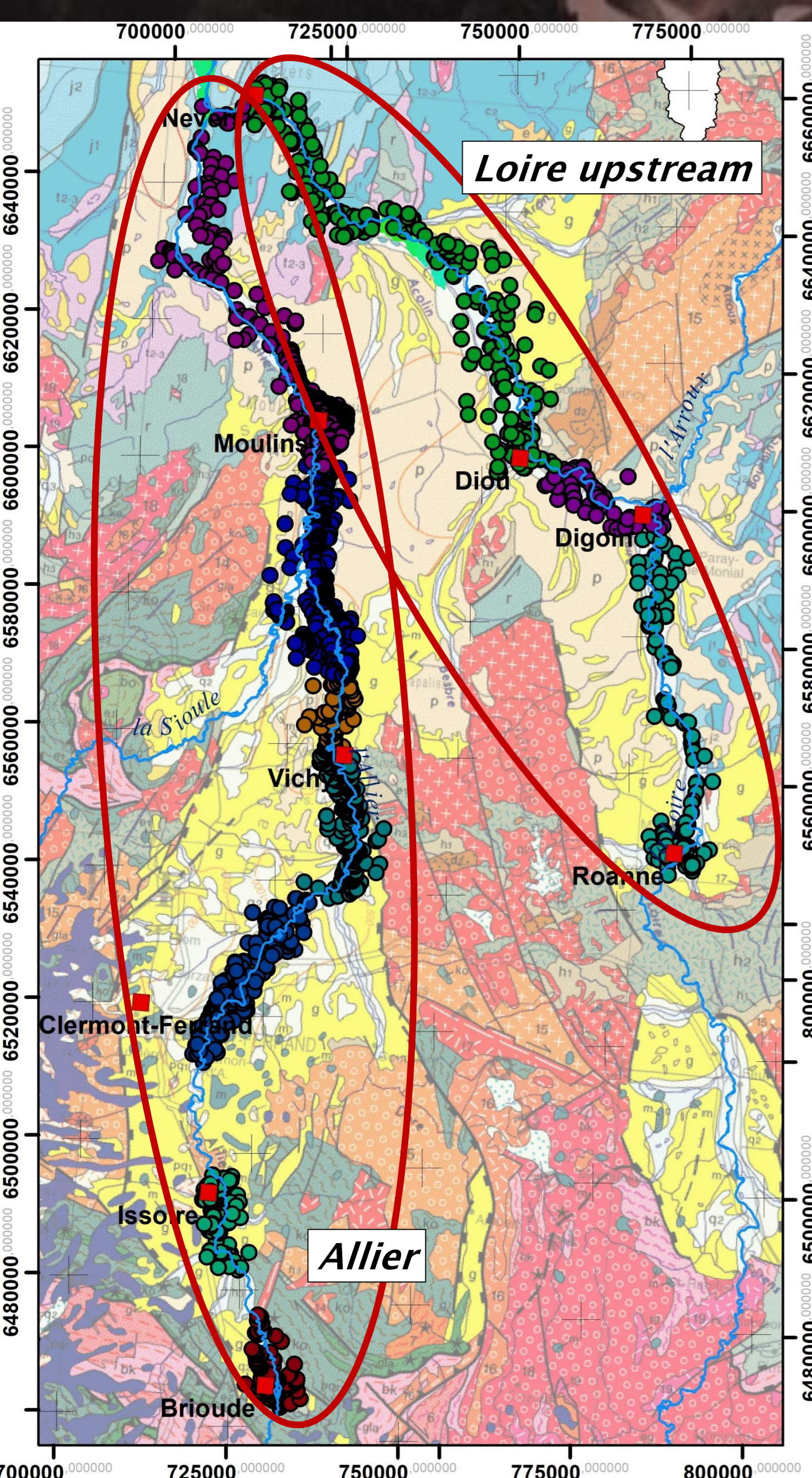


Figure 3: Boreholes geographic coverage on the Loire upstream and the Allier rivers.

**Data export and uniformisation from the national french database (BSS)**  
 Loire downstream (fig.2):  
 - 677 boreholes  
 Vienne (fig.2):  
 - 253 boreholes  
 Cher (fig.2):  
 - 664 boreholes  
 Allier (fig.3):  
 - 1 509 boreholes  
 Loire upstream (fig.3):  
 - 481 boreholes

**Geostatistical analyses:**  
 → variogram map study (fig.4)  
 → data analyses and experimental model selection (fig.5)  
 → cross validation (fig.6)

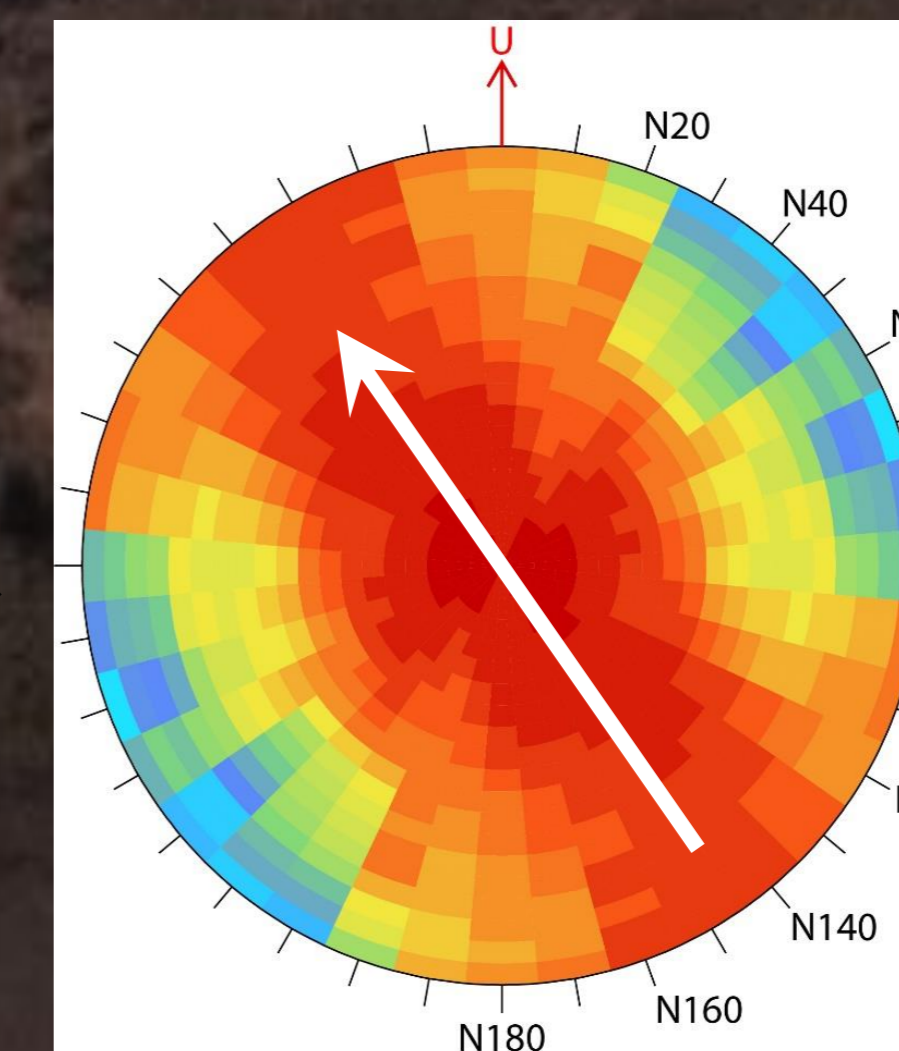


Figure 4: Example of variographic map (Brioude area, Allier upstream).

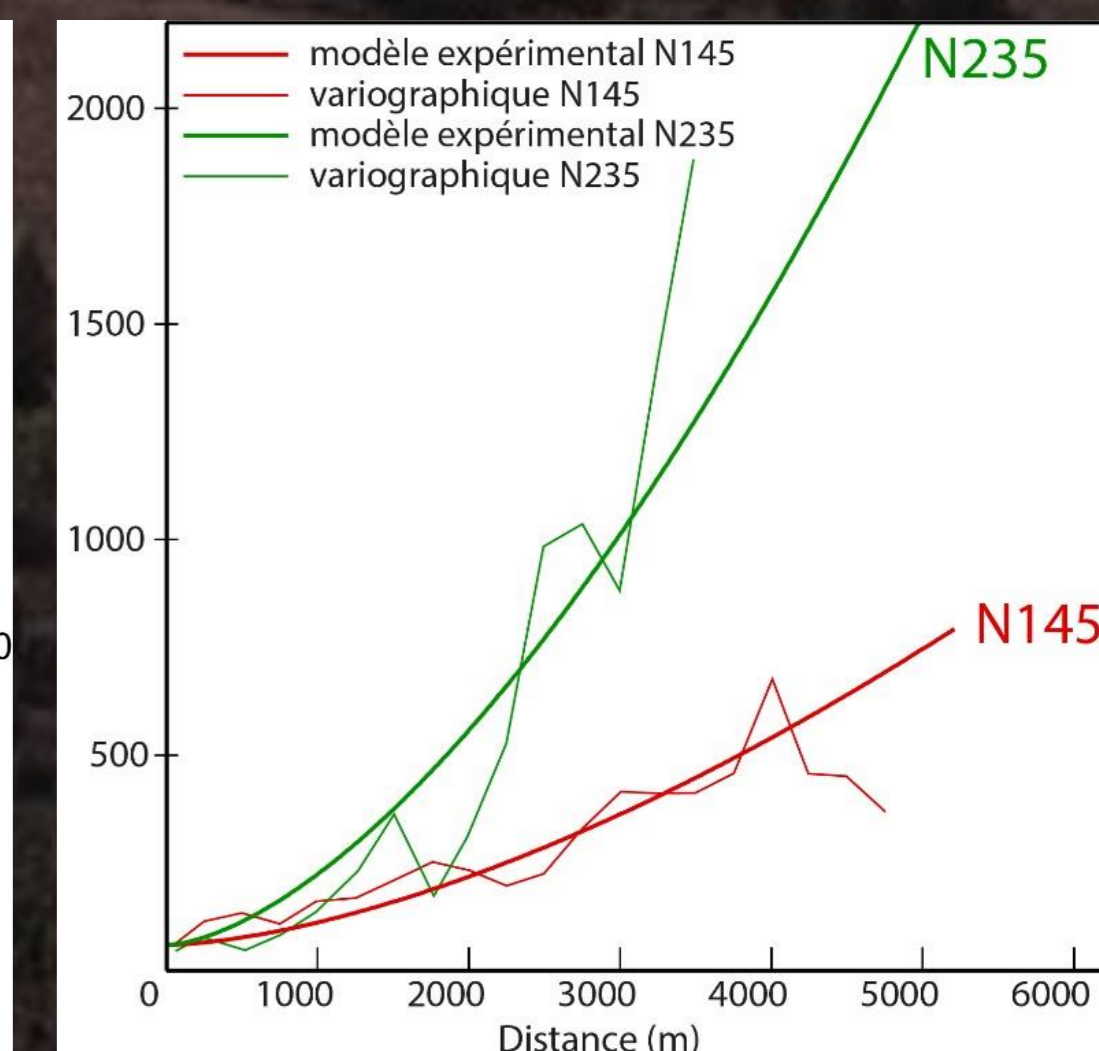


Figure 5: Example of variogram and experimental model (Brioude area, Allier upstream).

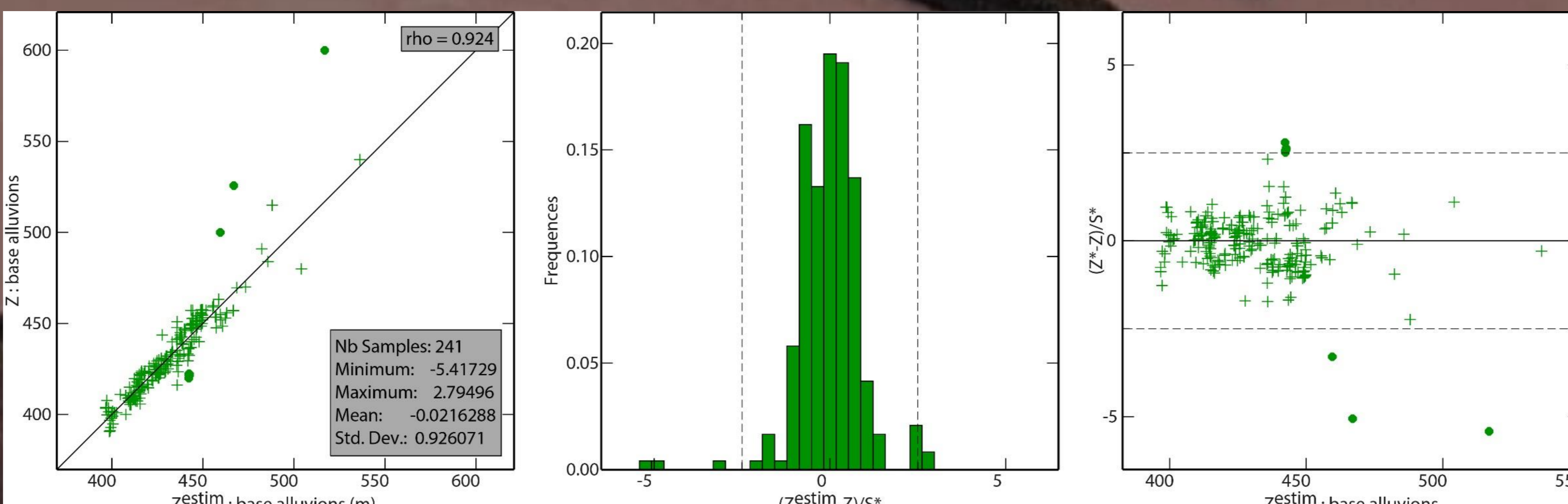


Figure 6: Estimate and real data cross validation (Brioude area, Allier upstream).

## 3. Results and perspectives

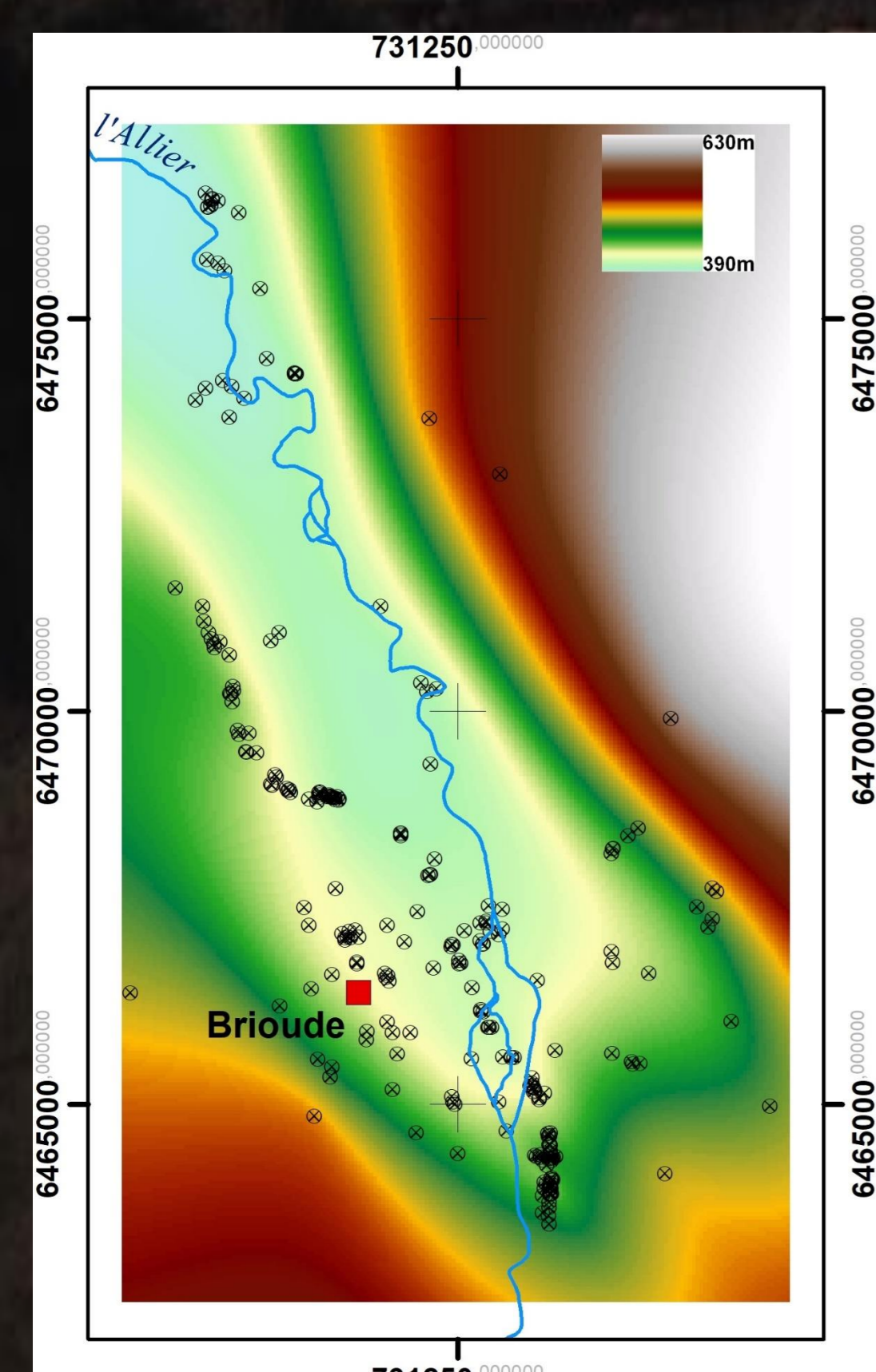


Figure 7: Elevation estimation map of the alluvial/bedrock boundary in the Brioude area (Allier).

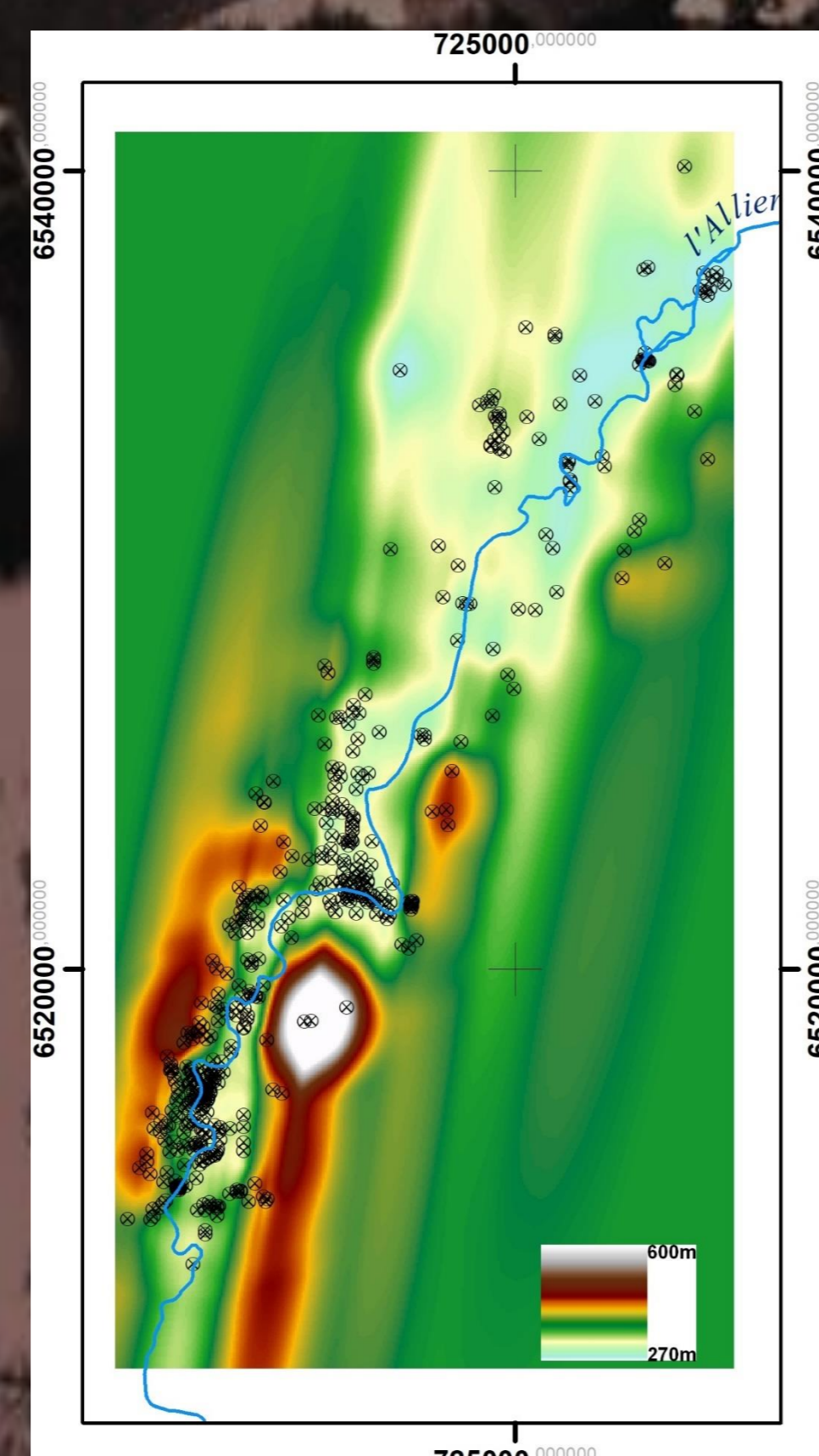


Figure 8: Elevation estimation map of the alluvial/bedrock boundary in the Maringues area (Allier amont).

→ multi-operational database available  
 → 3 elevation estimation maps of the alluvial/bedrock boundaries in the Allier valley (Brioude (fig.7), Issoire and Maringues (fig.8))  
 → 2 alluvial thickness maps (Loire upstream valley (fig.9) and Cher valley)

**In progress:**  
 → the last estimate elevation maps of the alluvial/bedrock boundary in the Allier downstream, the Cher and the Loire downstream rivers  
 → the alluvial estimate thickness maps of the Allier and the Loire downstream rivers  
 → Cutting estimation maps by the surface right-of-way of alluvial plains  
 → Estimation of the sediment volume in the bottom of the valley in the Loire catchment

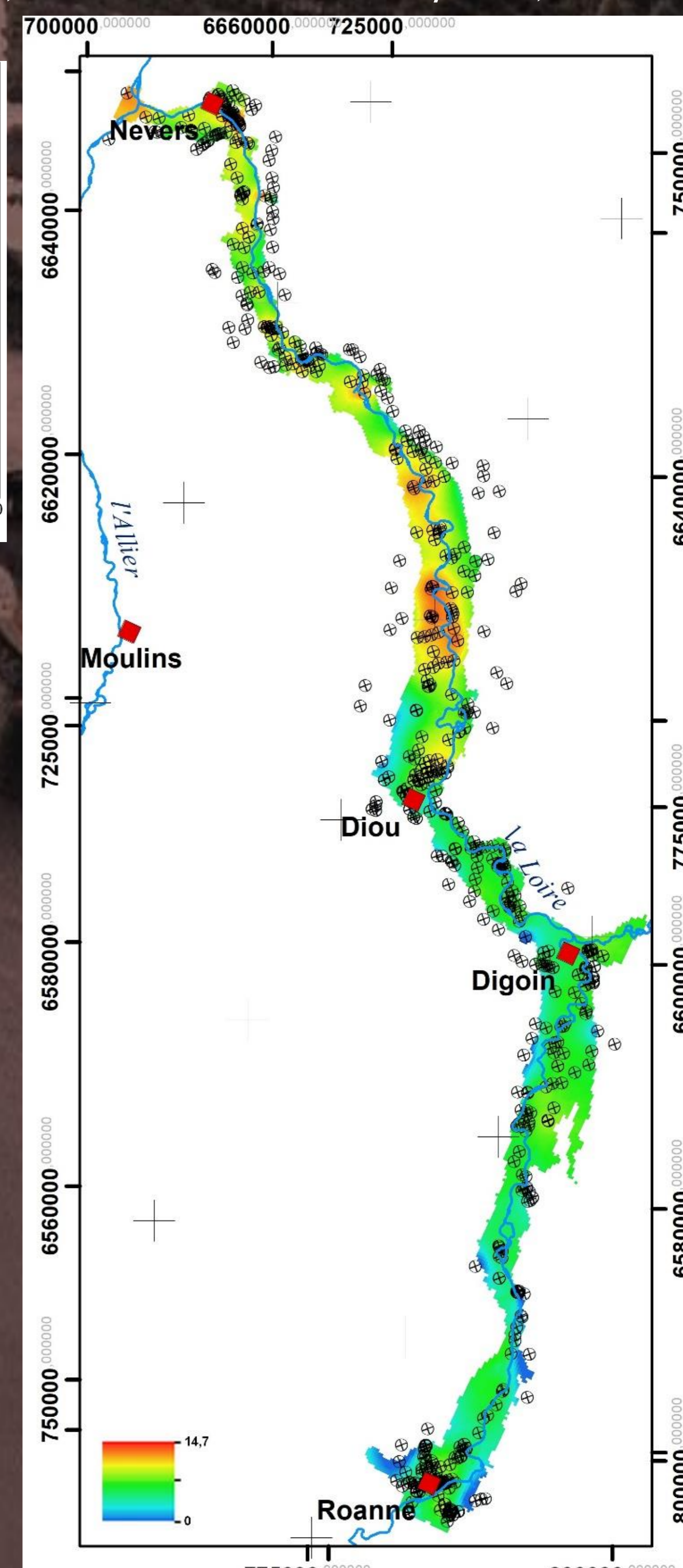


Figure 9: Alluvial thickness in the Loire upstream valley