

*Urbanism, Social Movement and Social Policy in Asia*



# The last farmer ? Unmaking a peasantry to fullfile an urban dream, Amaravati, in South India

Pr. Eric Leclerc, TVES EA 4477

University of Lille - France

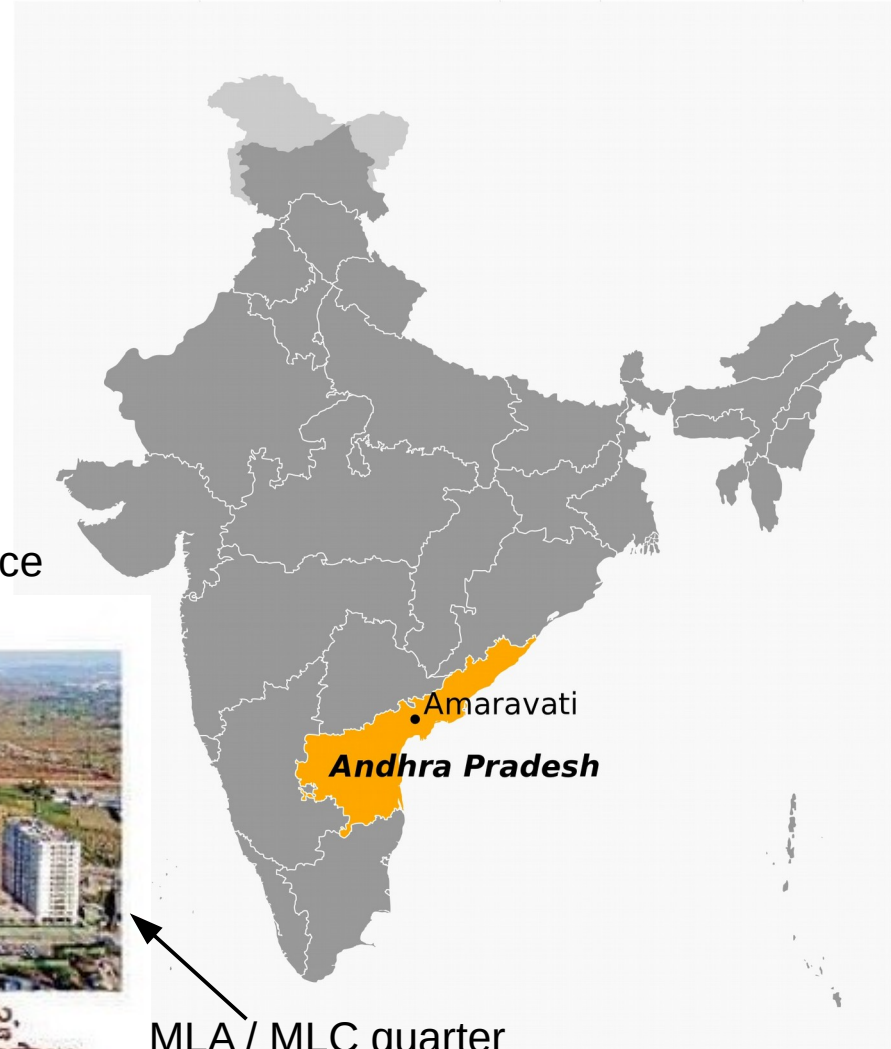
## 11th International Convention of Asia Scholars



# Unmaking a peasantry to fullfile an urban dream

New greenfield capital of Andhra Pradesh  
(sept. 2014) Amaravati

- smart city for 4,5 millions (2050)
- area 217 km<sup>2</sup> (25 villages)



Seed Access Road E3

APCRDA office



2017 డిసెంబరు: సీడ్ యాక్సెస్ రోడ్డు నిర్మాణంతో మొదలైన పనులు.

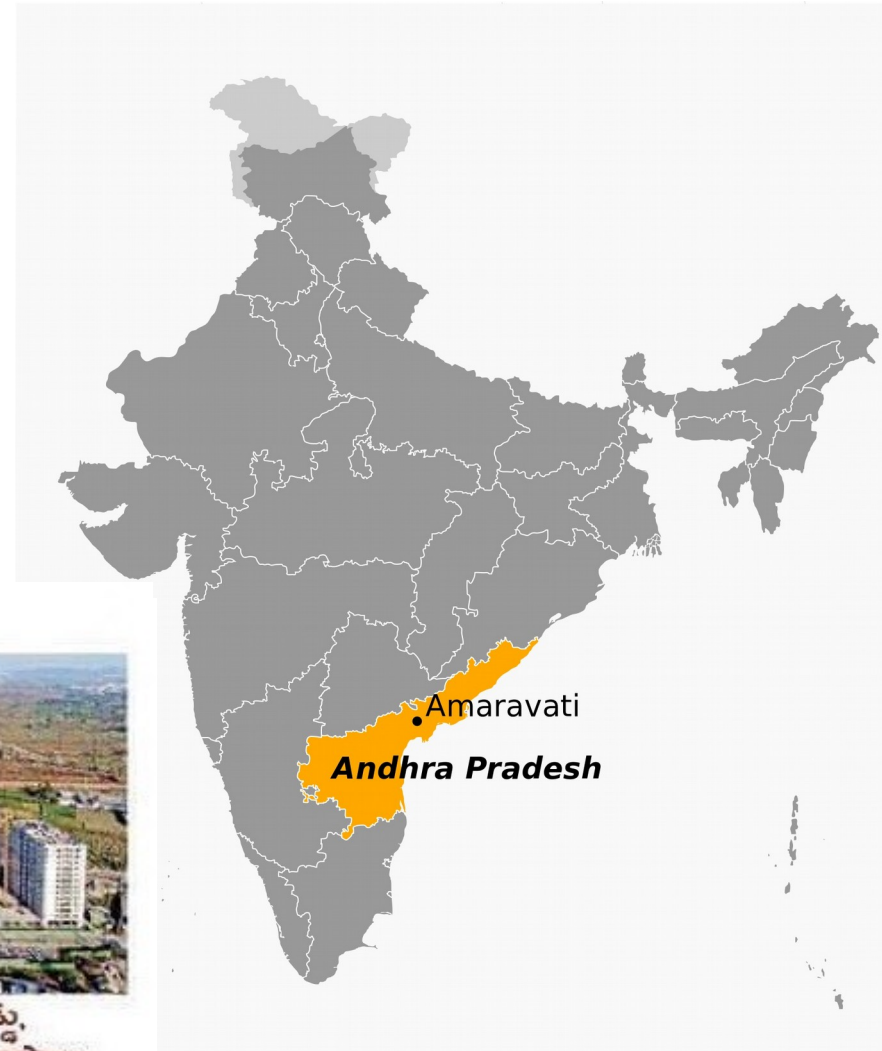
నేడు అదే ప్రదేశంలో సీడ్ యాక్సెస్ రోడ్డు, వక్కనే నిర్మాణమవుతున్న శాసనసభ్యుల నివాసాలు

MLA / MLC quarter

# Unmaking a peasantry to fullfile an urban dream

New green field capital of Andhra Pradesh  
(sept. 2014) Amaravati

- smart city for 4,5 millions (2050)
- area 217 km<sup>2</sup> (25 villages)



2017 డిసెంబరు: సీడ్ యాక్సిస్ రోడ్డు నిర్మాణంతో మొదలైన పనులు.

నేడు అదే ప్రదేశంలో సీడ్ యాక్సిస్ రోడ్డు, వక్కనే నిర్మాణమవుతున్న శాసనసభ్యుల నివాసాలు

# Theoretical background : territorialisation

**Deterritorialisation** : Deleuze / Guattari, 1983  
Appadurai, 1997

**Reterritorialisation** : Brenner, 2004 => Rescaling of state  
Upadhy, 2017 => Reterritorialization of a Region

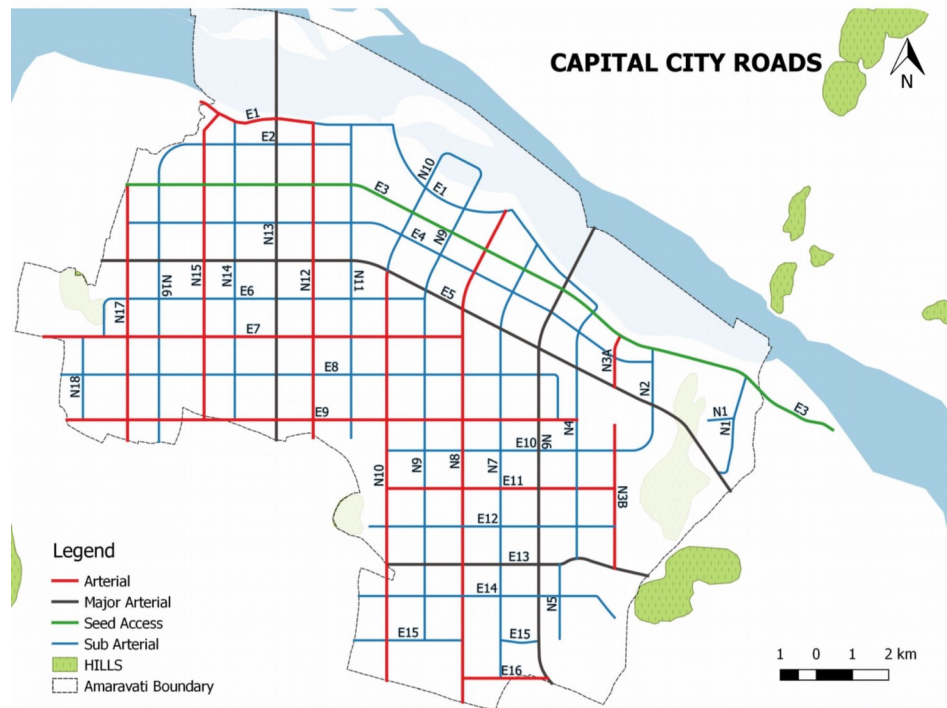
## Amaravati

**Top / down conflict of scales** : AP state vs 25 villages

**Conflict of development models** : World class city (Singapore planners & Norman Forster architect) vs Rich rural landscape & economy

How do the peasants of Amaravati redefine their territoriality under the threat of the planning state?

# 1. Deterritorialisation of the peasantry



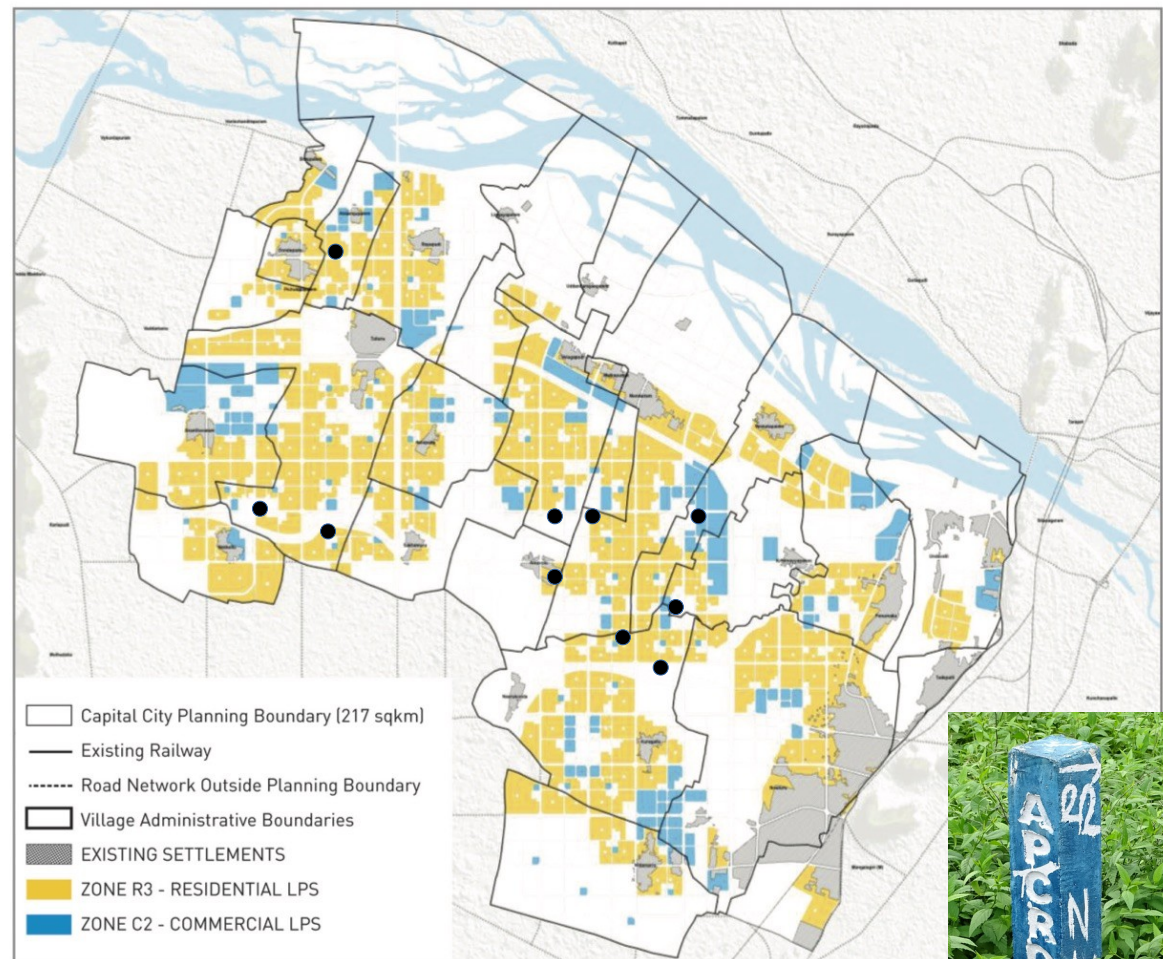
## 1.1 Urbanising the rural landscape

- ✓ Laying 320 km of major roads
- ✓ N/S grid system vs NE/SW slop
- ✓ Remodelling rivers : pumping station Kondaveethi Vagu (2018)
- ✓ Landscaping of tank (Thullur)



## 1.2 Uprooting a peasantry

- Commodification of agricultural land => LPS
- Peg marking of urban plot
- June 2016 / January 2017 re-allocation by lottery
- ✓ 33.000 Residential plots 32 km<sup>2</sup>
- ✓ 23.600 Commercial plots 7 km<sup>2</sup>
- Gannavaram airport 200 ac (august 2018)



Amaravati capital city LPS returnable residential and commercial lands

- Location of Gannavaram plots



## 2. Reterritorialisation of the villagers



### 2.1 End of agriculture

- Annual pension for land owners :
  - ✓ 30.000 ₹ / ac dry land
  - ✓ 50.000 ₹ / ac wet land & horticulture

*From our fieldwork*

- 5 ac to 25 ac = last generation
- < 5 ac small holders = relocation
- Agricultural labourer 2.500 ₹ / month / family = unemployment / construction

## 2.2 Urban village

- Integration of village settlements in Master Plan
- Upgradation of infrastructure
- Modernisation of houses
- Change of activity => rent
- Dual urbanism



Uddandrayunipalem

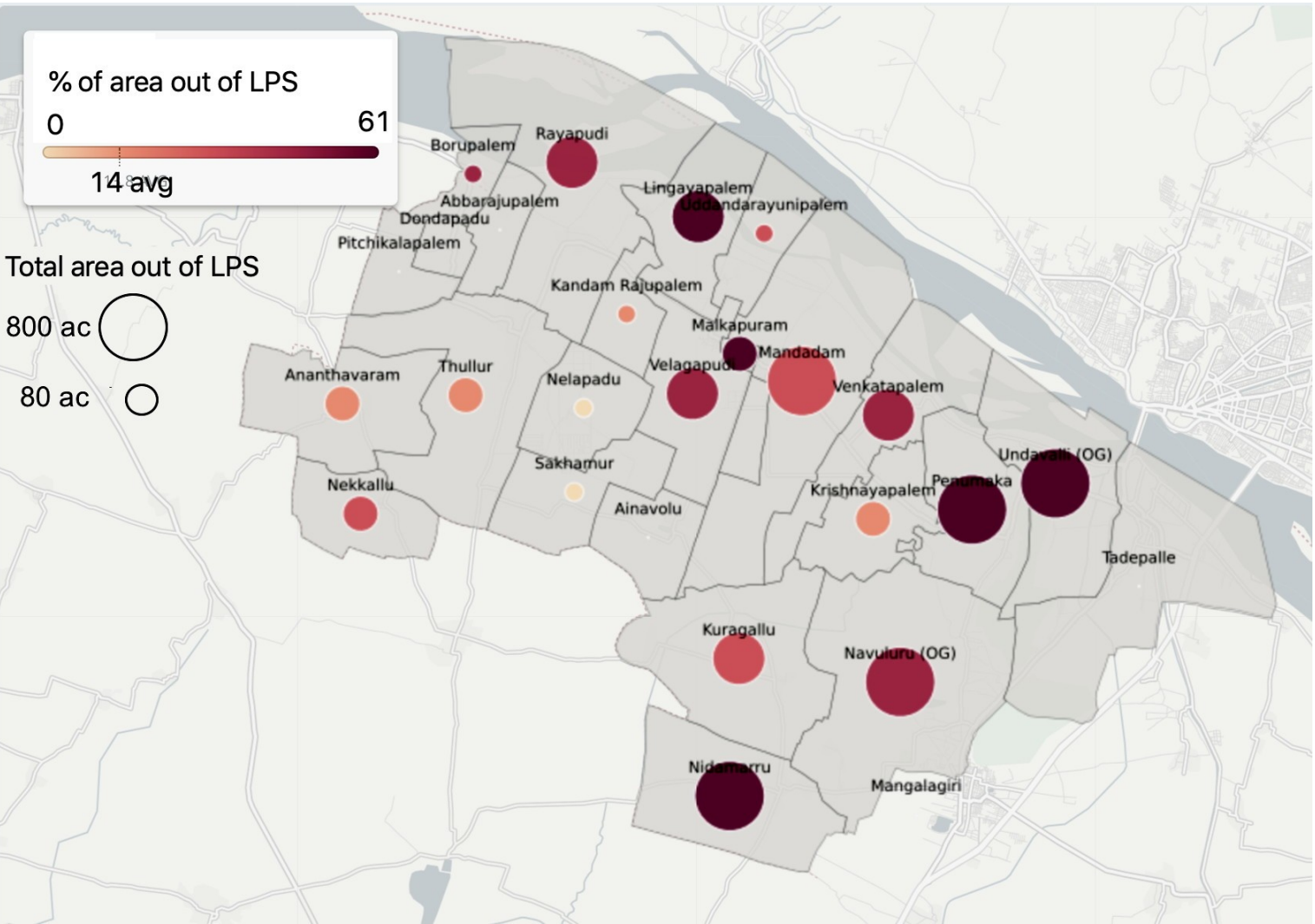
Neerukonda





# 3. Resistance to deterritorialisation

## 3.1 Opposition to LPS



5540 ac = 22,5 km<sup>2</sup>

North : Krishna river  
=> irrigation + horticulture

East : Urban periphery  
=> decrease of land prices

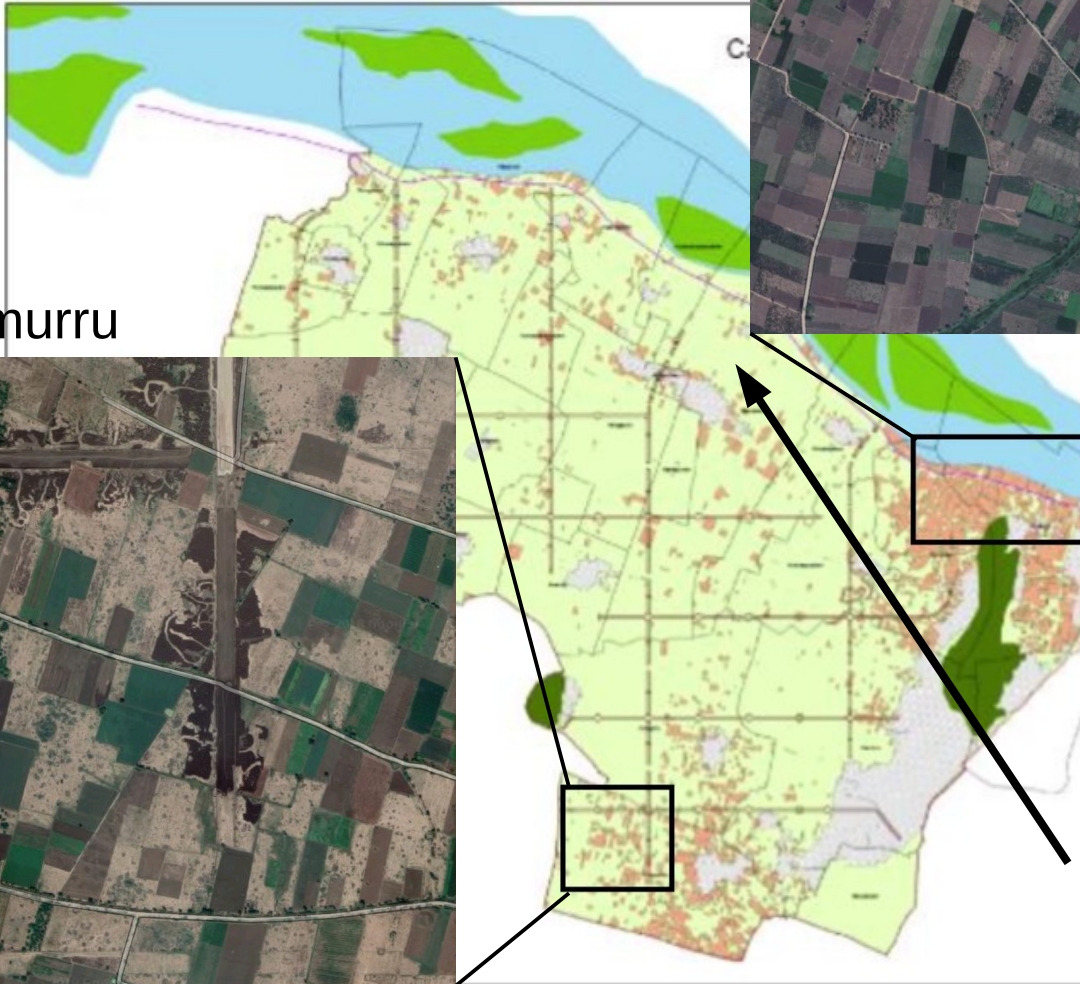
Political opposition :  
Kamma = TDP  
Reddy = YSR Congress

# 3.2 Last Farmers

Undavalli



Nidamurru



Tallayapalem



*How do the peasants of Amaravati redefine their territoriality under the threat of the planning state?*

## **Conclusion :**

- 1) Reterritorialisation : a concept with a broader scale from state to local level => Amaravati arises from its 25 villages
- 2) Counter-territorialisation : resisting state and private exclusion

## **Prospects :**

### Revisiting Deterritorialisation

Uncertain future for Amaravati => End of an utopia ? TDP failure 2019 election 25 / 175 MLAs seats => YSR Congress

- stop < 25 % completion work (70 % of project)
- destruction of illegal structures => residence of ex-CM

**Thank you for your attention ...**



And to University of Lille (France) to provide funds  
and to Rahul Maganti (research assistant)

Contact : [eric.leclerc@univ-lille.fr](mailto:eric.leclerc@univ-lille.fr)