



**HAL**  
open science

# HYBRID DATA-BASED MODELLING IN ONCOLOGY: SUCCESSES, CHALLENGES AND HOPES

Angélique Stéphanou, Pascal Ballet, Gibin Powathil

► **To cite this version:**

Angélique Stéphanou, Pascal Ballet, Gibin Powathil. HYBRID DATA-BASED MODELLING IN ONCOLOGY: SUCCESSES, CHALLENGES AND HOPES. *Mathematical Modelling of Natural Phenomena*, 2020, 15, 10.1051/mmnp/2019026 . hal-02405782

**HAL Id: hal-02405782**

**<https://hal.science/hal-02405782>**

Submitted on 11 Dec 2019

**HAL** is a multi-disciplinary open access archive for the deposit and dissemination of scientific research documents, whether they are published or not. The documents may come from teaching and research institutions in France or abroad, or from public or private research centers.

L'archive ouverte pluridisciplinaire **HAL**, est destinée au dépôt et à la diffusion de documents scientifiques de niveau recherche, publiés ou non, émanant des établissements d'enseignement et de recherche français ou étrangers, des laboratoires publics ou privés.

## HYBRID DATA-BASED MODELLING IN ONCOLOGY: SUCCESSES, CHALLENGES AND HOPES

ANGÉLIQUE STÉPHANO<sup>1,\*</sup>, PASCAL BALLE<sup>2</sup> AND GIBIN POWATHIL<sup>3</sup>

**Abstract.** In this opinion paper we make the statement that hybrid models in oncology are required as a mean for enhanced data integration. In the context of systems oncology, experimental and clinical data need to be at the heart of the models developments from conception to validation to ensure a relevant use of the models in the clinical context. The main applications pursued are to improve diagnosis and to optimize therapies. We first present the *Successes* achieved thanks to hybrid modelling approaches to advance knowledge, treatments or drug discovery. Then we present the *Challenges* than need to be addressed to allow for a better integration of the model parts and of the data into the models. And finally, the *Hopes* with a focus towards making personalised medicine a reality.

**Mathematics Subject Classification.** 35Q92, 68U20, 68T05, 92-08, 92B05.

Received November 5, 2018. Accepted May 22, 2019.

### 1. INTRODUCTION

Mathematical modelling in cancer is not new [47], however this fields truly exploded at the turn of the millennium. But at that time, the immense majority of models aimed to decipher, highlights or explain some mechanisms in relation to tumour growth, angiogenesis and invasion [22]. The link with experimental data was scarce and essentially concerned the kinetics of growth. Progressively the models evolved in connection with two major advances: the first concerned the increased computational ability of the machines that allowed to perform simulations in the sense of numerical experimentations; the second concerned the progresses made in imaging techniques that allowed a wider access to data. With time, the models progressively became more “informed” meaning that they integrated experimentally measured parameters and were validated based on experimental (*in vivo* or *in vitro*) observations. Whereas the model developers were mainly located in mathematical, computing or engineering departments, it is now not rare to found them at the heart of hospital infrastructures.

As of today, models are massively used in the domain of cancer to pursue four main goals: to improve diagnosis, to improve therapy, to identify and develop new drugs and to bring new knowledge on the development of the disease. Those goals contribute to bring the models much closer to the clinic. Models are developed in the context of Systems Oncology [61] which – as Systems Biology [69] – provides the comprehensive framework in which cancer can be investigated to truly understand and link its many aspects from the depth of the genes to

---

*Keywords and phrases:* Cancer, multi-scales, personalised medicine, systems oncology, treatment optimization.

<sup>1</sup> Université Grenoble Alpes, CNRS, TIMC-IMAG/DyCTIM2, 38041 Grenoble, France.

<sup>2</sup> University of Brest – LaTIM, UFR Médecine – IBRS, 29238 Brest Cedex 3, France.

<sup>3</sup> Department of Mathematics, Computational Foundry, College of Science, Swansea University, Swansea SA1 8EN, UK.

\* Corresponding author: [angelique.stephanou@univ-grenoble-alpes.fr](mailto:angelique.stephanou@univ-grenoble-alpes.fr)

the host environment. Such an integrated approach requires hybrid models, *i.e.* models made of different sub-parts heterogeneously defined mathematically to adequately describe various processes (biological, chemical, physical, etc.) and events occurring at multiple spatio-temporal scales [66]. However rather than focusing only on the hybrid aspect of the mathematical model formulation, we would like to extend the hybrid definition to the integration of experimental data at the core of the models, since this implies new model developments of a hybrid nature in its primary sense. This crucial integration is more and more emphasized [3, 5, 40, 41, 75, 76]. As for multiscale integration, data integration requires specific model adaptation to accommodate heterogeneous information and/or indirect information in the sense that the required ones are often unavailable [40].

This paper, advocating hybrid data-based modelling in oncology, is organized in three parts. First, we present the *Successes* with some examples where mathematical modelling in general and hybrid modelling in particular proved useful in a clinical context. Then we will evoke the *Challenges* that computational biologists and biomathematicians have to face to fully exploit the huge potential of modelling so as to make the models commonly used in the clinical practice to diagnose and treat patients. Finally we will describe the *Hopes* that the new generation of hybrid models bear towards making personalised medicine a reality.

## 2. THE SUCCESSES

Mathematical oncology has now a proven track record: to understand, to predict, to optimize and to discover [5]. In this section, we present some few representative contexts in which mathematical models proved particularly insightful and/or useful.

### 2.1. Prediction of cancer evolution

The first models in cancer essentially aimed at describing the growth kinetics of the tumours [47, 49]. Beyond the simple description of growth, the models then developed to account for more detailed information such as the shape of the tumour, the state of the tumour cells (proliferative, quiescent/dormant or necrotic), the nature and state of the environment (vascularized, degraded, fibrous, hypoxic, acidic, etc.) and also to predict how all these elements evolve when therapy comes into play [40]. As for now, it is difficult to find clinical studies for which therapies have been defined or optimized from a mathematical model. It is most usual and widespread to find models that retrospectively predict how the tumour would grow or explain why a therapy was successful or failed. The obvious reason is that such experimentations on patients cannot be authorized since the risk remains high and clinicians are not yet ready to trust a computer program. In the other hand, models are now accepted in the clinic to predict the evolution of a tumour from patient images, to inform the clinician on the potential outcome. One such example is given in Colin *et al.* [23], where temporal CT scans of a specific patient are used to calibrate a mathematical model that proved successful in predicting the evolution of metastatic nodules in the lung. In a similar way the study by Wang *et al.* [72] exploits magnetic resonance images (MRI) of patients with glioblastoma to measure for each individual patient the net cell proliferation and invasive rates. Those rates are then used in a mathematical model to evaluate the prognostic (survival time) for each patient. It has to be noted that these two cases are both excellent examples of hybrid models that integrate information from clinical images at their core.

### 2.2. Therapeutic optimization

The number of mathematical models dedicated to therapeutic optimization is enormous, however computer-aided treatments at the bedside remain extremely limited as noted in [11]. The work accomplished towards treatment optimization clearly paves the path to personalised medicine where treatments would be designed to suit a specific patient by integrating all his/her characteristic from genetic to personal habits [69]. We will not enter here into model presentations since this will be the main focus on the “*Hopes*” section. One interesting example though is the case of chronotherapy whereby drug administration is adjusted to the circadian rhythms [9]. This example is worth mentioning since clinical trials showed an existing benefits of chronotherapy for cancer patients outcomes. At the same time, inter-patient variability was also exhibited. These findings advocate

75 the necessity of personalised chronotherapeutics through integrated models. Those are thoroughly reviewed in  
Q16 Ballesta *et al.* [9].

### 77 2.3. Identification of resistance to therapy

78 One important contribution of the mathematical models was in the identification of resistance mechanisms.  
79 Passive resistance mechanisms for example could be involuntary exhibited in simulations while testing drug  
80 delivery regimens. In these simulations, it occurred that the drug could bypass the tumour targets depending  
81 on the structure of the vascular network [67]. More generally, modelling of the spatiotemporal availability of  
82 drugs commonly show heterogeneous distribution in the tumour where portion of it might escape to treatment.  
83 Similarly, and for the same reason of non optimal oxygen delivery, part of the tumour can become hypoxic  
84 and the cell can enter into quiescence as a survival mean [68]. Through this mechanism, the cells can escape to  
85 cytotoxic drugs since they stopped their cycle and limit the exposure to cytotoxic damages [60]. Active resistance  
86 mechanisms have also been extensively modelled. Those mainly relate to the genetic and epigenetic alterations  
87 that modify the cells vulnerability to the drugs and/or enhance its evasion power. We refer the interested reader  
88 to the dedicated review by Foo *et al.* [29].

### 89 2.4. Identification of new drugs

90 The new drug candidates are first tested *in vitro* on cultured tumour cells where viability *versus* death is  
91 measured in time for a range of drug concentrations. The dose is then scaled up for *in vivo* testing on animals  
92 (mostly rodents) bearing the same tumour cells of interest. Finally clinical trials allow to test the drug on  
93 patients to fully evaluate the drug efficacy as well as its potential side effects. At the end of this long process,  
94 only a very small number of drugs are finally approved by the various agencies [38, 44] and even so the efficacy  
95 often remain below expectations [25]. Mathematical modelling thus appears as a crucial tool for integrating *in*  
96 *vitro* and *in vivo* and make sense of the results so as to favour a more informed and efficient transposition to  
97 patients [21]. PK/PD models are commonly used and accepted in drug development to help in selecting the  
98 best administration schedule, to avoid toxicity and to “unable decision making” [31]. However standard PK/PD  
99 are often limited on their own since other crucial information might be needed to catch all aspects of the drugs  
100 interaction with the overall system. In the very recent years PK/PD models were found to be coupled to other  
101 model elements such as the cell cycle, the circadian rhythms [7], or the cell physiology which led to PBPK-PD  
102 models (Physiologically-Based PK-PD) [7, 16, 21]. These couplings with detailed mechanistic models make it  
103 possible to identify new therapeutic targets and to help design new innovative drugs [21].

## 104 3. THE CHALLENGES

### 105 3.1. Integration of experimental and mathematical models

106 A mathematical or computational model is by essence always wrong in the sense that it can never entirely  
107 describe and represent all aspects of reality. It is always based on assumptions made by the modeller and  
108 is therefore strongly biased by the choices made. However this does not prevent models to produce accurate  
109 prediction on some aspects of the reality. For example, the speed with which a tumour is growing, its shape or  
110 its invasiveness can all be predicted based on some sets of relatively simple assumptions regarding proliferation  
111 rate or cell-cell adhesion [32]. Similarly, and as we saw it in the previous section, the effects of different types  
112 of therapy can also be assessed with a good accuracy and can include the prediction of resistance [29, 37] or  
113 relapse effects [30, 43]. Phenomenological models – that is models that implement a predetermined answer for a  
114 phenomena given an entry condition or stimulus – often proved sufficient to make good qualitative predictions.  
115 For example to model the effect of a drug, it can simply be assumed that if the cells are subjected to a threshold  
116 concentration of drugs then it will enter apoptosis [60]. In the other hand the explicit description of the mode of  
117 action of the drug can be modelled through mechanistic pharmacodynamic models [8]. This option is favoured  
118 to understand how the drug truly works and how its effect can potentially be enhanced by identifying some best

119 suited conditions of administration or applicability. Phenomenologic or mechanistic, it is the utility and power  
120 of the model to answer the specific questions for which it has been built that matters the most. However in the  
121 context of cancer, and more specifically in the domain of drug testing, it is essential to integrate biological data  
122 at the heart of the computational model development to guide the choice of pertinent hypotheses and ensure  
123 the model validity to describe key observations. We indeed recall that it is illusory to search for model genericity  
124 – since each model serves its own purpose – but in the other hand it should be tailored to provide real insights  
125 to truly advance knowledge and to be immediately useful especially towards personalised medicine.

126 There is indeed a critical need for models truly rooted in reality (*i*) so as to be relevant for a clinical use,  
127 (*ii*) to cope with the high rate of failed clinical trials in the last remaining stages of drug testing [44]. The  
128 enhanced integration between pre-clinical models (*in vitro* and *in vivo*) with more informed mathematical  
129 models (*in silico*) would lead to a much higher level of confidence, however efforts in that direction are still rare.  
130 This coupled *in vitro/in vivo/in silico* approach was already attempted by [74] back in 2012 and was further  
131 advocated in [16] with the example of Physiologically-based pharmacokinetic and pharmacodynamic models  
132 (PBPK/PD).

### 133 3.2. Management of the rising computational cost

134 Hybrid modelling directed towards simulating the rise and development of cancer requests high computational  
135 power. What is generally costly is:

- 136 – the integration of the many interacting phenomena occurring at different time and space scales. This  
137 requires specific algorithms to order the simulations for the different events sequentially [48, 60]. Time  
138 can be wasted since some events are on hold while other needs to reach stationary states for example.  
139 Moreover each event is generally solved with its own grid size and granularity from continuous to discrete  
140 [34]. This is however amenable to parallel computing.
- 141 – the simulation of a high number of cells, up to the million, since most models now describe the real 3D  
142 geometrical context and environment to account more faithfully to reality by avoiding geometrical biased  
143 [36].
- 144 – the integration of the tumour environment including other cell types (fibroblasts, immune or stem cells,  
145 etc.), the extracellular matrix and the tissue vasculature. This requires multiphysics modelling to account  
146 for the mechanical properties of the matrix or the blood flow through the vessels.
- 147 – the graphical representation of the running simulation. This aspect can be very useful especially in the  
148 conception phase of the code. It allows to see the developing tumour and to image the variables that  
149 characterize the environment so as to see if they are correctly integrated. This also allows to stop the  
150 simulation – while testing some parameters for example – if inappropriate or deviant behaviours occur.
- 151 – the integration of experimental data. Since, as we saw it in the previous section, the new generation of  
152 hybrid models is to merge pre-clinical data in the *in silico* model in a dynamic way. For example the  
153 data can serve as check points during the simulations (for validation) or can be provided and processed  
154 iteratively (scan images for example) so as to adapt a target trajectory for treatment optimality.

155 Of course not all models need to integrate all of these items, but the most recent hybrid models usually integrate  
156 at least one of them and each are computationally demanding on their own. It has to be noted that for most  
157 of these items there exists dedicated softwares, to solve multiphysics problems (*e.g.* Comsol multiphysics),  
158 mechanical issues (*e.g.* Ansys), to deal with image processing on the fly (*e.g.* ImageJ), to graphically represents  
159 the variables while simulating (*e.g.* Paraview). Interfacing such different softwares could appear useful but in  
160 practice this can be very complicated not only for the implementation, but to maintain the workability of the  
161 overall code since it is required to cope with the many updates and releases of the individual softwares. Those  
162 can compromise their compatibilities and threaten the code sustainability on the long run. Moreover calling for  
163 multiple sub-codes and softwares generally takes too much machine time (RAM). This option is therefore not  
164 adapted and we are left with the necessity of recoding everything in an integrated and consistent framework.

### 165 3.2.1. Some solutions

166 Although there is room to produce optimized algorithms, the best hope to cope with the rising computational  
167 costs involved in hybrid cancer modelling is to exploit the progress made in computer hardwares and processors.  
168 The computing power of the machines – that continues to grow exponentially – have been significantly enhanced  
169 over the last ten years with the appearance of the first multicore processors. Those allowed to overcome the  
170 stabilization (below 5 GHz) of the clock speed of the single processor [10]. However, the graphics cards have  
171 today the highest computing power thanks to their massively parallel processor architecture of up to a thousand  
172 calculus units. They are programmable thanks to general purpose language close the C language like Cuda  
173 or OpenCL and can be used to compute parallel-structured algorithms. Quantum computing could be the  
174 next breakthrough to drastically improve the computing speed, although the applicability mostly concerns  
175 combinatory calculus [10].

176 Coping with the simulation time is a real issue to address since the all goal of cancer modelling is to help  
177 in providing a faster and more accurate diagnosis and/or to help in defining the optimum treatment strategy.  
178 The models are thus designed to be used in the clinical context and as such – once fed with the data from the  
179 patient – they should provide an (almost) immediate answer to be approved as a clinical assistant.

### 180 3.3. Need for software tools for research and education

181 Given the increased complexity of the hybrid models, advanced computational skills become more and more  
182 essential in particular for those who wish to fully exploit the new hardware architectures. However, the main  
183 interest for a biomathematician or computational biologist is to focus on the modelling activity which is to  
184 define some work hypotheses to put under the test by identifying the key phenomena and the main actors  
185 (variables) of the subject of study. The time spent on the implementation of the model, *i.e.* on coding, should  
186 not overcome the time spent on developing the model.

187 Fortunately many efforts have been made over the last 10 years to develop integrated computing environment  
188 that are open-source and free so as to be re-used and shared. Those environment dedicated to multicellular  
189 modelling all allow to implement easily basic cell properties, such as migration, adhesion and proliferation as  
190 well as reaction–diffusion dynamics of chemicals. We here focus on the presentation of a few of them among  
191 those which proved particularly useful to model tumour growth and the effects of therapies and whose used  
192 is widespread and acknowledged in the cancer modelling community. All are suitable for multiscale modelling,  
193 they allow to make 3D simulations and they all integrate a graphic interface to display the simulations.

#### 194 3.3.1. CompuCell3D [70]

195 This software is based on the Cellular Potts Model (CPM) [35]. It allows to describe the evolution of cells,  
196 where each cell is defined by a collection of sub-elements of a square grid. An energy function (Hamiltonian) that  
197 includes adhesion energies and volume constraints is evaluated. If the energy is minimized the cell configuration  
198 can be changed. Add-ons on the main software allow to integrate the intracellular dynamics [4]. Model imple-  
199 mentation is flexible and can easily be performed by non-experts in coding by defining the model in an XML  
200 file. More experts users can produce their own code using the Python language and developers can even create  
201 their own plugins using the C language [10]. This framework has been extensively used to study angiogenesis  
202 [55] but also to study therapy issues such as the routes of drug delivery [73] or bystander effects in radiation  
203 therapy [62].

#### 204 3.3.2. Cell-based Chaste [53, 58]

205 This is an efficient software in the sense that virtually anything can be modelled from regulation networks,  
206 to mechanical constraints. The implementation is based on three interlinked modules: (1) a cellular behaviour  
207 module allowing the intrinsic cell evolution (through its cycle for example), (2) a module for cell movement  
208 and mechanical interactions, (3) a module for the transport of substances (molecules for example). A recent  
209 useful add-on is specifically dedicated to the modelling of microvessels [36]. The strength of this software lies in



its flexibility allowing lattice-free implementations as well as lattice-based approaches including the CPM. Its use however requires to possess more advanced computing skills than for CompuCell3D<sup>1</sup> but in the other hand it is well adapted to merge to the platform some pre-existing codes which can favour the adhesion of a wider modelling community. Although Cell-based Chaste<sup>2</sup> was initially developed to model colorectal cancers [71], it can potentially be applied to any type of cancers including non-solid tumors.

### 3.3.3. PhysiCell [33]

PhysiCell<sup>3</sup> stands for physics-based multicellular simulator. It is an agent-based simulator written in C++ and parallelized with OpenMP so as to simulate up to a million of cells. It integrates different solvers to describe the biochemical environment (from diffusing substrates to cell-secreted signals) as well as the cell-cell mechanical interactions. Paraview is chosen for data visualization. It is still a young platform but conceived to evolve with the emerging new needs. One strength of the platform is that it is sufficiently flexible for replicating results from other simulators which – as Chaste – favours the migration of existing codes to this platform. Another advantage of the software is to put forward the possibility of a direct integration of experimental data file by using annotated experimental or clinical image as inputs to the software (although not implemented yet).

### 3.3.4. SimCells [10]

This software has been specifically developed to exploit the multiprocessor architecture of GPU. The number of simulated cells thus depends on the number of units of the GPU. It can reach the million with the most recent graphic cards. The cells in SimCells<sup>4</sup> are defined as off-grid agents. A graphical user interface enables the user to define its systems with cells of different types whose behaviours are determined through the parametrization of predefined sets of rules and/or properties (such as adhesivity or motility) under the form of *Conditions then Actions*. One advantage of the software is to give the ability to stop and restart the simulations so as to modify some parameters or conditions on the fly. The software is thus very useful to rapidly test some simple ideas without requiring any coding expertise. It is consequently an excellent tool for non expert in coding and proved particularly useful as a pedagogic tool to initiate a wide (diverse) audience to model development. The main drawback of the software for now is that it does not allow to represent the intrinsic physical/mechanical properties of the simulated objects. Moreover experimental data measurements can not be integrated since the definition of behaviours is essentially based on probabilities rather than on physical parameters, meaning that quantitative information cannot be reached. This is currently restraining the use of the software, however it remains a very useful numerical test bench, *i.e.* a good virtual platform for numerical bio-experimentations.

## 4. THE HOPES

### 4.1. Making personalised medicine a reality

In a not too far future, the patient scans, analyses and medical history will feed a computer program. The MRI (or other scans) will be automatically analysed, the tumour volume evaluated, etc. All information provided will be cross related and an accurate diagnosis would be made based on the currently developing deep learning algorithms where the computer will be trained to acquire a knowledge equivalent to this of a thousands of clinicians with different expertise altogether (radiologists, oncologists, neurologists, etc.) [57]. Beyond the diagnosis, the patient's data will be used to create the patient's virtual tumour *i.e.* a numeric clone with the exact same location and properties (shape, volume, nature, grade, metabolic state, etc.) so as to behave as the real tumour. Given the knowledge of the possible therapeutic means and of the usable drugs, simulations would then be made using the virtual tumour to identify the optimum treatment in terms of means of action,

<sup>1</sup><http://www.compuCell3d.org/>

<sup>2</sup><http://www.cs.ox.ac.uk/chaste/>

<sup>3</sup><http://physicell.mathcancer.org/>

<sup>4</sup><http://virtulab.univ-brest.fr/simcells.html>

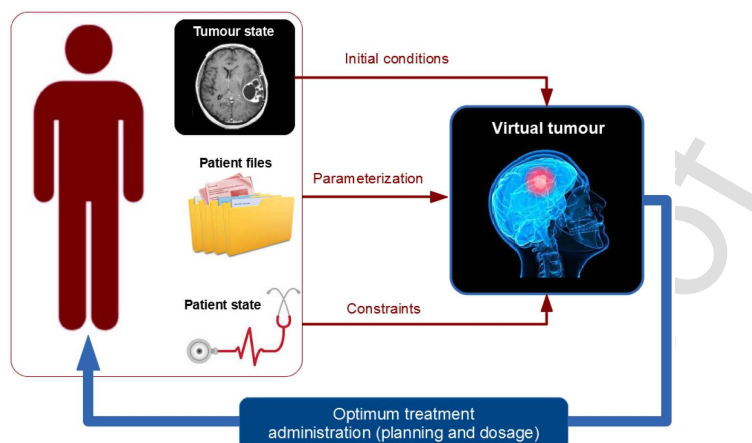


FIGURE 1. The concept of personalised medicine. A virtual tumour is created from the patient data (scans/medical file/state) and is used to identify the optimum treatment and its schedule to cure or to maximize the life expectancy. All data acquired on the patient during the course of treatment is used to feed the virtual tumour and to update /adapt the therapy while respecting some imposed constraints (so as to control therapeutic interactions, to avoid contraindications with other pathologies, to take into account the patient state).

dosage and planning of drug administration. Treatment adaptations during the course of treatment can be made by updating the virtual tumour with the newly available patient data. It is expected that such a clinical tool would produce at the same time a highly informed (hence accurate) diagnosis and the best adapted therapeutic strategy that would maximize the chances to cure the patient or to significantly extend the survival (by fully exploiting the current knowledge in oncology). Beyond the benefit to the patients, such a tool would help to standardize and optimize the screening procedures to make them more efficient so as to gain time to obtain a diagnosis and to start the treatment.

The realization of such a tool requires a level of integration of highly heterogeneous biological data in multiple space and time scales, as illustrated in Figure 1, making it a complex problem to address. However, current developments in computational, mathematical and systems oncology [1, 2, 6, 11, 20, 26, 28, 39, 42, 51, 59, 61, 69] show great potential to develop predictive, personalised clinical cancer practice, integrating mathematical and computational approaches with traditional bench and clinical experiments. Moreover, the availability of a vast amount of patient-specific data with the help of technical and computational advances can further help in developing such *in silico* framework/tool. Karolak *et al.* [42] gives an excellent review on various mathematical models that address tumour development, progression and response to treatments. Recently, there are several attempts and applications towards this direction, incorporating the complexity of tumour evolution and treatment efficacy in multiple scales [11, 20, 39, 42, 50, 51, 59, 61, 69]. Such models allow for intratumoural cross-scale integration of intracellular, extracellular and intercellular concepts, providing comprehensive modelling frameworks to which patient-specific information can be added to devise personalised therapeutic protocols.

Macklin *et al.* [50, 51] introduced a patient-specific calibration method based on a hybrid agent based model to fully constrain the model based upon clinically-accessible histopathology data to obtain a patient histopathology providing new insights on the biophysical underpinnings of cancer. This may in future pave the way to augment a patient's imaging data with well calibrated models to predict optimal surgical margins based upon the patient-specific imaging data. Cook *et al.* [24] used a biologically driven discrete hybrid cellular automaton (HCA) model of bone metastatic prostate cancer to obtain an optimal therapeutic window for putative targeted therapies as current pre-clinical models were limited in predicting the therapeutic effects. They used it to study the effect of TGF $\beta$  inhibitor treatment on the evolution of the cancer. Stéphanou and co-workers [20] proposed the design of a patient-specific virtual tumour incorporating angiogenesis, matrix remodelling, hypoxia, and cell state



278 heterogeneity that will all influence the tumour growth kinetics and degree of tumour invasiveness. They have  
279 used a hybrid, multiscale approach for its implementation with the help of the pre-clinical data acquired on a  
280 mouse model as a proof of concept. By combining image analysis and physiological modelling, they have shown  
281 that the simulated virtual tumour matches the characteristics and spatiotemporal evolution of the real *in vivo*  
282 tumour, showing the potential use of experimentally motivated computational and mathematical models in  
283 personalised therapeutic delivery. In a similar approach, Powathil *et al.* [19, 61] used a hybrid multiscale cellular  
284 automaton framework with intra- and inter-cellular dynamics to model tumour progression and further used  
285 to study the optimal combination of multimodal therapies. They have validated the model with experimentally  
286 estimated parameters for multiple cell-lines and their framework claims flexibility for modelling multimodality  
287 treatment combinations in different scenarios [19]. Volpert *et al.* proposed another example of hybrid approaches  
288 to investigate blood related diseases including Leukemia [46], Multiple Myeloma [17, 18] and Lymphoma [28]  
289 in order to test, interpret or predict the effects of treatments in relation to clinical data. Such experimentally  
290 calibrated and validated multiscale frameworks not only take us a step closer to personalised medicine but also  
291 helps as *in silico* test-bases for potential drug discovery and to study and test potential hypotheses to optimise  
292 multimodality therapeutic protocols before taking its clinical delivery.

293 In addition to such hybrid multiscale approaches, there are other mathematical models in the literature with  
294 a top-down approach to devise personalised cancer therapies. Swanson and co-workers [6, 39, 52] use patient-  
295 specific mathematical models based on continuum mathematical modelling approaches to deliver patient-specific  
296 treatment predictions in neuro-oncology to treat very aggressive malignant brain tumours. Enderling lab [59, 63]  
297 developed mathematical model that use the concept of proliferation saturation index to predict patient specific  
298 radiotherapy protocols and they claimed that with the help of mathematical models, the information gained from  
299 radiobiological images can be used to select personalised RT dose-fractionation protocols. Ballesta *et al.* [7] used  
300 a multiscale modelling approach, informed by *in vitro* preclinical studies to develop cell line specific model  
301 to optimise anticancer therapies. Kronik *et al.* [45] proposed a general mathematical model for prostate cancer  
302 immunotherapy, incorporating vaccine interactions and immune system and validated the predictions using the  
303 results of a clinical trial data, showing its potential applications in personalised immunotherapy protocols.

304 These are some examples of several computational and modelling approaches to potentially deliver per-  
305 sonalised multimodality therapeutic protocols in the fight against cancer. With the advancement of tissue  
306 engineering and the concept of “organ on chips” [27, 56], parameterisation, calibration and the validation of  
307 developing *in silico* tools can be achieved in a little more realistic scenarios and thus helping to move steps  
308 closer to providing patient-specific treatment delivery tools.

## 309 4.2. Deciphering the roots of the disease

310 Beyond the interest for developing more efficient therapies, hybrid modelling in cancer can also prove essential  
311 to tackle more fundamental issues such as the questioning of the origin of cancer. An ongoing discussion concerns  
312 the Tissue Organization Fields Theory (TOFT) [64, 65] which is opposed to the classical Somatic Mutation  
313 Theory (SMT) [13–15, 54]. The TOFT argues that a loss of tissue homeostasis following carcinogenic stresses  
314 releases the constraints on cell proliferation and motility. On the other hand, the SMT is based on the mainstream  
315 understanding that mutations directly drives cancer development. When they do not lead to cell apoptosis then  
316 more mutations can accumulate ultimately resulting in a deviant cell behaviour. If the latter is not spotted by  
317 the immune systems, then a malignant tumour can develop.

318 Determining which theory is right can have enormous consequences in the way with which cancer is treated.  
319 In the SMT the cell is the cause and this justifies the use of most standard therapies that directly targets the  
320 tumour cells (cytostatic or cytotoxic molecules, radiation, surgery). In the other hand in the TOFT the cell is not  
321 the cause and the main focus should be to work on the environment and try to restore its normal (homeostatic)  
322 properties. This means that most therapeutic strategies need to be rethought accordingly to avoid a snow ball  
323 effect whereby therapy would be participating in a faster and more aggressive development of the disease.

324 Systems oncology and its hybrid modelling tools provide the means to fully investigate this delicate issue  
325 since it directly relates genotypic changes to tissue dysregulation [12]. The question is: is it from bottom to top

(SMT) or from top to bottom (TOFT)? As far as we know, no theoretical models (*i.e.* simulation based) have been tackling this issue yet. Although we can imagine some ways to test this, using the same model hypotheses concerning differentiation and growth while testing alternatively (1) the effect of spontaneous mutations; (2) the loss of tissue homeostasis and its consequences on the cell behavioural divergence (phenotypic and genotypic). In both case, the evolution of the cells fitness (towards proliferation, migration or apoptosis) could be compared as a criterion for cancer progression.

## 5. CONCLUSION

We now enter the era of Artificial Intelligence where humans are assisted or replaced by machines for interpretation and decision tasks that would lead to more accurate diagnosis and more efficient therapies. Without necessarily realizing it, we – as biomathematicians, computational biologists, bioinformaticians and statisticians – are the main actors of this transition and evolution. The challenge for us is to build the theoretical tools that will make the machines able to process the information and produce interpretations that will condition decisions and actions. In this context of systems oncology, the new generation of models needs to be more and more integrated to process both imaging data and “big data” (*i.e.* genomics, proteomics and other omics). Again, this calls for hybrid modelling to couple statistical models and deep learning algorithms for recognition and interpretation tasks with mechanistic models for knowledge-based predictions. These two modelling approaches – statistic and mechanistic – belong to two different scientific communities. One of the big challenge is to make them deeply interact so as to make personalised computer-assisted therapy a clinical reality.

*Acknowledgements.* We would like to thank Pr. Carlos Sonnenschein on useful comments regarding the Tissue Organization Field Theory.

## REFERENCES

- [1] Z. Agur, M. Elishmereni and Y. Kheifetz, Personalizing oncology treatments by predicting drug efficacy, side-effects, and improved therapy: mathematics, statistics, and their integration. *Wiley Interdiscip. Rev. Syst. Biol. Med.* **6** (2014) 239–253.
- [2] J.C.L. Alfonso, K. Talkenberger, M. Seifert, B. Klink, A. Hawkins-Daarud, K.R. Swanson, H. Hatzikirou and A. Deutsch, The biology and mathematical modelling of glioma invasion: a review. *J. Roy. Soc. Interface* (2017).
- [3] P.M. Altrock, L.L. Liu and F. Michor, The mathematics of cancer: integrating quantitative models. *Nat. Rev. Cancer* **15** (2015) 730–745.
- [4] V. Andasari, R.T. Roper, M.H. Swat and M.A.J. Chaplain, Integrating intracellular dynamics using *compuCell3d* and *bionetsolver*: applications to multiscale modelling of cancer cell growth and invasion. *PLOS ONE* **7** (2012) 1–17.
- [5] A.R.A. Anderson and P.K. Maini, Mathematical oncology. *Bull. Math. Biol.* **80** (2018) 945–953.
- [6] A.L. Baldock, R.C. Rockne, A.D. Boone, M.L. Neal, A. Hawkins-Daarud, D.M. Corwin, C.A. Bridge, L.A. Guyman, A.D. Trister, M.M. Mrugala, J.K. Rockhill and K.R. Swanson, From patient-specific mathematical neuro-oncology to precision medicine. *Front. Oncol.* **3** (2013) 62.
- [7] A. Ballesta and J. Clairambault, Physiologically based mathematical models to optimize therapies against metastatic colorectal cancer: a mini-review. *Curr. Pharmaceut. Des.* **20** (2014) 37–48.
- [8] A. Ballesta, Q. Zhou, X. Zhang, H. Lv and J.M. Gallo, Multiscale design of cell-type specific pharmacokinetic/ pharmacodynamic models for personalized medicine: application to temozolomide in brain tumors. *CPT Pharmacometr. Syst. Pharmacol.* **3** (2014) e112.
- [9] A. Ballesta, P.F. Innominato, R. Dallmann, D.A. Rand and F.A. Levi, Systems chronotherapeutics. *Pharmacolog. Rev.* **69** (2017) 161–199.
- [10] P. Ballet, *SimCells*, an advanced software for multicellular modeling: application to tumoral and blood vessel co-development, Working paper (unpublished) (2018).
- [11] D. Barbolosi, J. Ciccolini, B. Lacarelle, F. Barlési and N. André, Computational oncology-mathematical modelling of drug regimens for precision medicine. *Nat. Rev. Clin. Oncol.* **13** (2016) 242–254.
- [12] D. Basanta and A.R.A. Anderson, Homeostasis back and forth: an ecoevolutionary perspective of cancer. *Cold Spring Harbor Perspect. Med.* **7** (2017).
- [13] B. Bedessem and S. Rupy, Smt or toft? How the two main theories of carcinogenesis are made (artificially) incompatible. *Acta Biotheor.* **63** (2015) 257–267.
- [14] B. Bedessem and S. Rupy, Smt and toft integrable after all: a reply to bizzarri and cucina. *Acta Biotheor.* **65** (2017) 81–85.

- 374 [15] M. Bizzarri and A. Cucina, Smt and toft: why and how they are opposite and incompatible paradigms. *Acta Biotheor.* **64**  
375 (2016) 221–239.
- 376 [16] M. Block, Physiologically based pharmacokinetic and pharmacodynamic modeling in cancer drug development: status, potential  
377 and gaps. *Exp. Opin. Drug Metab. Toxicol.* **11** (2015) 743–756.
- 378 [17] A. Bouchnita, N. Eymard, T.K. Moyo, M.J. Koury and V. Volpert, Bone marrow infiltration by multiple myeloma causes  
379 anemia by reversible disruption of erythropoiesis. *Am. J. Hematol.* **91** (2016) 371–378.
- 380 [18] A. Bouchnita, F.-E. Belmati, R. Aboulaich, M.J. Koury and V. Volpert, A hybrid computation model to describe the progression  
381 of multiple myeloma and its intra-clonal heterogeneity. *Computation* **5** (2017).
- 382 [19] S. Brueningk, G. Powathil, P. Ziegenhein, J. Ljaz, I. Rivens, S. Nill, M. Chaplain, U. Oelfke and G. Ter Haar, Combining  
383 radiation with hyperthermia: a multiscale model informed by in vitro experiments. *J. Roy. Soc. Interface* **15** (2018) 20170681.
- 384 [20] F. Caraguel, A.C. Lesart, F. Estève, B. van der Sanden and A. Stéphanou, Towards the design of a patient-specific virtual  
385 tumour. *Comput. Math. Methods Med.* **2016** (2016) 7851789.
- 386 [21] L. Carrara, S.M. Lavezzi, E. Borella, G. De Nicolaio, P. Magni and I. Poggesi, Current mathematical models for cancer drug  
387 discovery. *Exp. Opin. Drug Discov.* **12** (2017) 785–799.
- 388 [22] M.A.J. Chaplain, The mathematical modelling of tumour angiogenesis and invasion. *Acta Biotheor.* **43** (1995) 387–402.
- 389 [23] T. Colin, F. Cornelis, J. Jouganous, M. Martin and O. Saut, Patient specific image driven evaluation of the aggressiveness of  
390 metastases to the lung. *Med. Image Comput. Assist. Interv.* **17** (2014) 553–560.
- 391 [24] L.M. Cook, A. Araujo, J.M. Pow-Sang, M.M. Budzevich, D. Basanta and C.C. Lynch, Predictive computational modeling to  
392 define effective treatment strategies for bone metastatic prostate cancer. *Sci. Rep.* **6** (2016) 29384.
- 393 [25] C. Davis, H. Naci, E. Gurpinar, E. Poplavska and A. Pinto, Availability of evidence of benefits on overall survival and quality  
394 of life of cancer drugs approved by European medicines agency: retrospective cohort study of drug approvals 2009–13. *BMJ*  
395 **359** (2017) j4530.
- 396 [26] H. Enderling and K.A. Rejniak, Simulating cancer: computational models in oncology. *Front. Oncol.* **3** (2013) 233.
- 397 [27] E.W. Esch, A. Bahinski and D. Huh, Organs-on-chips at the frontiers of drug discovery. *Nat. Rev. Drug Discov.* **14** (2015)  
398 248–260.
- 399 [28] N. Eymard, V. Volpert, P. Kurbatova, V. Volpert, N. Bessonov, K. Ogungbenro, L. Aarons, P. Janiaud, P. Nony, A. Bajard,  
400 S. Chabaud, Y. Bertrand, B. Kassai, C. Cornu, P. Nony and CRESim project group, Mathematical model of t-cell lymphoblastic  
401 lymphoma: disease, treatment, cure or relapse of a virtual cohort of patients. *Math. Med. Biol.* **35** (2018) 25–47.
- 402 [29] J. Foo and F. Michor, Evolution of acquired resistance to anti-cancer therapy. *J. Theor. Biol.* **355** (2014) 10–20.
- 403 [30] J.A. Gallaher, P.M. Enriquez-Navas, K.A. Luddy, R.A. Gatenby and A.R.A. Anderson, Spatial heterogeneity and evolutionary  
404 dynamics modulate time to recurrence in continuous and adaptive cancer therapies. *Cancer Res.* **78** (2018) 2127–2139.
- 405 [31] E. Garralda, R. Dienstmann and J. Taberner, Pharmacokinetic/pharmacodynamic modeling for drug development in oncology.  
406 *Am. Soc. Clin. Oncol. Annu. Meet.* **37** (2017) 210–215.
- 407 [32] P. Gerlee and A.R.A. Anderson, Evolution of cell motility in an individual-based model of tumour growth. *J. Theor. Biol.*  
408 **259** (2009) 67–83.
- 409 [33] A. Ghaffarizadeh, R. Heiland, S.H. Friedman, S.M. Mumenthaler and P. Macklin, PhysiCell: an open source physics-based cell  
410 simulator for 3-D multicellular systems. *PLoS Comput. Biol.* **14** (2018) e1005991.
- 411 [34] N. Glade and A. Stéphanou, Le vivant discret et continu – Modes de représentation en biologie théorique. Editions  
412 Matériologiques, Paris (2013).
- 413 [35] F. Graner and J.A. Glazier, Simulation of biological cell sorting using a two-dimensional extended potts model. *Phys. Rev.*  
414 *Lett.* **69** (1992) 2013–2016.
- 415 [36] J.A. Grogan, A.J. Connor, B. Markelc, R.J. Muschel, P.K. Maini, H.M. Byrne and J. Pitt-Francis, Microvessel chaste: an open  
416 library for spatial modeling of vascularized tissue. *Biophys. J.* (2017).
- 417 [37] S. Hamis, P. Nithiarasu and G.G. Powathil, What does not kill a tumour may make it stronger: in silico insights into  
418 chemotherapeutic drug resistance. *J. Theor. Biol.* **454** (2018) 253–267.
- 419 [38] L. Hutchinson and R. Kirk, High drug attrition rates: where are we going wrong? *Nat. Rev. Clin. Oncol.* **8** (2011) 189–190.
- 420 [39] P.R. Jackson, J. Juliano, A. Hawkins-Daarud, R.C. Rockne and K.R. Swanson, Patient-specific mathematical neuro-oncology:  
421 using a simple proliferation and invasion tumor model to inform clinical practice. *Bull. Math. Biol.* **77** (2015) 846–856.
- 422 [40] A.M. Jarrett, E.A.B.F. Lima, D.A. Hormuth, M.T. McKenna, X. Feng, D.A. Ekrut, A.C.M. Resende, A. Brock and T.E.  
423 Yankeelov, Mathematical models of tumor cell proliferation: a review of the literature. *Exp. Rev. Anticancer Therapy* (2018)  
424 1–16.
- 425 [41] Z. Ji, K. Yan, W. Li, H. Hu and X. Zhu, Mathematical and computational modeling in complex biological systems. *BioMed*  
426 *Res. Int.* **2017** (2017) 5958321.
- 427 [42] A. Karolak, D.A. Markov, L.J. McCawley and K.A. Rejniak, Towards personalized computational oncology: from spatial  
428 models of tumour spheroids, to organoids, to tissues. *J. Roy. Soc. Interface* **15** (2018).
- 429 [43] Y. Kim, G. Powathil, H. Kang, D. Trucu, H. Kim, S. Lawler and M. Chaplain, Strategies of eradicating glioma cells: a  
430 multi-scale mathematical model with mir-451-ampk-mtor control. *PLoS ONE* **10** (2015) e0114370j.
- 431 [44] I. Kola and J. Landis, Can the pharmaceutical industry reduce the attrition rates? *Nat. Rev. Drug Discov.* **3** (2004) 711–715.
- 432 [45] N. Kronik, Y. Kogan, M. Elishmereni, K. Halevi-Tobias, S. Vuk-Pavlović and Z. Agur, Predicting outcomes of prostate cancer  
433 immunotherapy by personalized mathematical models. *PLOS ONE* **5** (2010) 1–8.
- 434 [46] P. Kurbatova, S. Bernard, N. Bessonov, F. Crauste, I. Denim, C. Dumontet, S. Fischer and V. Volpert, Hybrid model of  
435 erythropoiesis and leukemia treatment with cytosine arabinoside. *SIAM J. Appl. Math.* **71** (2011) 2246–2268.
- 436

- 437 [47] A.K. Laird, Dynamics of tumor growth. *Br. J. Cancer* **13** (1964) 490–502.
- 438 [48] A.C. Lesart, B. van der Sanden, L. Hamard, F. Estève and A. Stéphanou, On the importance of the submicrovascular network  
439 in a computational model of tumour growth. *Microvasc. Res.* **84** (2012) 188–204.
- 440 [49] W.B. Looney, J.S. Trefil, J.C. Schaffner, C.J. Kovacs and H.A. Hopkins, Solid tumor models for the assessment of different  
441 treatment modalities: I. Radiation-induced changes in growth rate characteristics of a solid tumor model. *Proc. Natl. Acad.*  
442 *Sci. U.S.A.* **72** (1975) 2662–2666.
- 443 [50] P. Macklin, M.E. Edgerton, A.M. Thompson and V. Cristini, Patient-calibrated agent-based modelling of ductal carcinoma  
444 in situ (DCIS): from microscopic measurements to macroscopic predictions of clinical progression. *J. Theor. Biol.* **301** (2012)  
445 122–140.
- 446 [51] P. Macklin, H.B. Frieboes, J.L. Sparks, A. Ghaffarizadeh, S.H. Friedman, E.F. Juarez, E. Jonckheere and S.M. Mumenthaler,  
447 Progress towards computational 3-d multicellular systems biology. *Adv. Exp. Med. Biol.* **936** (2016) 225–246.
- 448 [52] S.C. Massey, R.C. Rockne, A. Hawkins-Daarud, J. Gallaher, A.R.A. Anderson, P. Canoll and K.R. Swanson, Simulat-  
449 ing PDGF-driven glioma growth and invasion in an anatomically accurate brain domain. *Bull. Math. Biol.* **80** (2018)  
450 1292–1309.
- 451 [53] G.R. Mirams, C.J. Arthurs, M.O. Bernabeu, R. Bordas, J. Cooper, A. Corrias, Y. Davit, S.J. Dunn, A.G. Fletcher, D.G.  
452 Harvey, M.E. Marsh, J.M. Osborne, P. Pathmanathan, J. Pitt-Francis, J. Southern, N. Zemzemi and D.J. Gavaghan, Chaste:  
453 an open source c++ library for computational physiology and biology. *PLOS Comput. Biol.* **9** (2013) 1–8.
- 454 [54] M. Montévil and A. Pocheville, The hitchhiker’s guide to the cancer galaxy. How two critics missed their destination. *Orgnisms.*  
455 *J. Biol. Sci.* **1** (2017) 37–48.
- 456 [55] M.M. Palm, M.G. Dallinga, E. van Dijk, I. Klaassen, R.O. Schlingemann and R.M.H. Merks, Computational screening of tip  
457 and stalk cell behavior proposes a role for apelin signaling in sprout progression. *PLOS ONE* **11** (2016) 1–31.
- 458 [56] A.R. Perestrelo, A.C.P. Águas, A. Rainer and G. Forte, Microfluidic organ/body-on-a-chip devices at the convergence of  
459 biology and microengineering. *Sensors (Basel, Switzerland)* **15** (2015) 31142–31170.
- 460 [57] R.K. Perez, R. Kang, R. Chen, J.G. Castellanos, A.R. Milewski and A.R. Perez, Computational oncology. *J. Oncopathol. Clin.*  
461 *Res.* **2** (2018).
- 462 [58] J. Pitt-Francis, P. Pathmanathan, M.O. Bernabeu, R. Bordas, J. Cooper, A.G. Fletcher, G.R. Mirams, P. Murray, J.M.  
463 Osborne, A. Walter, S.J. Chapman, A. Garny, I.M.M. van Leeuwen, P.K. Maini, B. Rodriguez, S.L. Waters, J.P. Whiteley,  
464 H.M. Byrne and D.J. Gavaghan, Chaste: a test-driven approach to software development for biological modelling. *Comp. Phys.*  
465 *Commun.* **180** (2009) 2452–2471.
- 466 [59] J. Poleszczuk, R. Walker, E.G. Moros, K. Latifi, J.J. Caudell and H. Enderling, Predicting patient-specific radiotherapy  
467 protocols based on mathematical model choice for proliferation saturation index. *Bull. Math. Biol.* **80** (2018) 1195–1206.
- 468 [60] M. Pons-Salort, B. van der Sanden, A. Juhem, A. Popov and A. Stéphanou, A computational framework to assess the efficacy  
469 of cytotoxic molecules and vascular disrupting agents against solid tumours. *Math. Model. Nat. Phenom.* **7** (2012) 49–77.
- 470 [61] G.G. Powathil, M. Swat and M.A.J. Chaplain, Systems oncology: towards patient-specific treatment regimes informed by  
471 multiscale mathematical modelling. *Semin. Cancer Biol.* **30** (2015) 13–20.
- 472 [62] G.G. Powathil, A.J. Munro, M.A.J. Chaplain and M. Swat, Bystander effects and their implications for clinical radiation  
473 therapy: insights from multiscale in silico experiments. *J. Theor. Biol.* **401** (2016) 1–14.
- 474 [63] S. Prokopiou, E.G. Moros, J. Poleszczuk, J. Caudell, J.F. Torres-Roca, K. Latifi, J.K. Lee, R. Myerson, L.B. Harrison and  
475 H. Enderling, A proliferation saturation index to predict radiation response and personalize radiotherapy fractionation. *Radiat.*  
476 *Oncol.* **10** (2015) 159.
- 477 [64] C. Sonnenschein and A.M. Soto, Carcinogenesis explained within the context of a theory of organisms. *Progr. Biophys. Molec.*  
478 *Biol.* **122** (2016) 70–76.
- 479 [65] A.M. Soto and C. Sonnenschein, The tissue organization field theory of cancer: a testable replacement for the somatic mutation  
480 theory. *BioEssays* **33** (2011) 332–340.
- 481 [66] A. Stéphanou and V. Volpert, Hybrid modelling in biology: a classification review. *Math. Model. Nat. Phenom.* **11** (2016)  
482 37–48.
- 483 [67] A. Stéphanou, S.R. McDougall, A.R.A. Anderson and M.A.J. Chaplain, Mathematical modelling of flow in 2d and 3d vascular  
484 networks: applications to antiangiogenic and chemotherapeutic drug strategies. *Math. Comp. Model.* **41** (2005) 1137–1156.
- 485 [68] A. Stéphanou, A.C. Lesart, J. Deverchère, A. Juhem, A. Popov and F. Estève, How tumour-induced vascular changes alter  
486 angiogenesis: Insights from a computational model. *J. Theor. Biol.* **419** (2017) 211–226.
- 487 [69] A. Stéphanou, E. Fanchon, P.F. Innominato and A. Ballesta, Systems biology, systems medicine, systems pharmacology: the  
488 what and the why. *Acta Biotheor.* **66** (2018) 345–365.
- 489 [70] M.H. Swat, G.L. Thomas, J.M. Belmonte, A. Shirinifard, D. Hmeljak and J.A. Glazier, Chapter 13 – multi-scale modeling  
490 of tissues using compucell3d. In Anand R. Asthagiri and Adam P. Arkin, editors, Computational Methods in Cell Biology.  
491 Vol. 110 of *Methods in Cell Biology*. Academic Press (2012) 325–366.
- 492 [71] I.M.M. Van Leeuwen, G.R. Mirams, A. Walter, A. Fletcher, P. Murray, J. Osborne, S. Varma, S.J. Young, J. Cooper, B. Doyle,  
493 J. Pitt-Francis, L. Momtahan, P. Pathmanathan, J.P. Whiteley, S.J. Chapman, D.J. Gavaghan, O.E. Jensen, J.R. King, P.K.  
494 Maini, S.L. Waters and H.M. Byrne, An integrative computational model for intestinal tissue renewal. *Cell Proliferation* **42**  
495 (2009) 617–636.
- 496 [72] C.H. Wang, J.K. Rockhill, M. Mrugala, D.L. Peacock, A. Lai, K. Jusenius, J.M. Wardlaw, T. Cloughesy, A.M. Spence,  
497 R. Rockne, E.C. Alvord Jr. and K.R. Swanson, Prognostic significance of growth kinetics in newly diagnosed glioblastomas  
498 revealed by combining serial imaging with a novel biomathematical model. *Cancer Res.* **69** (2009) 9133–9140.

- 499 [73] K.K. Winner, M.P. Steinkamp, R.J. Lee, M. Swat, C.Y. Muller, M.E. Moses, Y. Jiang and B.S. Wilson, Spatial modeling of  
500 drug delivery routes for treatment of disseminated ovarian cancer. *Cancer Res.* **76** (2016) 1320–1334.
- 501 [74] T.E. Yankeelov, Integrating imaging data into predictive biomathematical and biophysical models of cancer. *ISRN Biomath.*  
502 **2012** (2012).
- 503 [75] T.E. Yankeelov, R.G. Abramson and C.C. Quarles, Quantitative multimodality imaging in cancer research and therapy. *Nat.*  
504 *Rev. Clin. Oncol.* **11** (2014) 670–680.
- 505 [76] T.E. Yankeelov, G. An, O. Saut, E.G. Luebeck, A.S. Popel, B. Ribba, P. Vicini, X. Zhou, J.A. Weis, K. Ye and G.M. Genin,  
506 Multi-scale modeling in clinical oncology: opportunities and barriers to success. *Ann. Biomed. Eng.* **44** (2016) 2626–2641.

## Author Query

- Q1** Please check short running title for correctness.
- Q2** Please provide volume and page number for references 2 and 36.
- Q3** Please provide page number for references 12, 18 and 42.

Uncorrected Proof