



**HAL**  
open science

# Effect of ultrasonic shot peening on the surface defects of thin struts built by electron beam melting: Consequences on fatigue resistance

T. Persenot, A. Burr, E. Plancher, J.-Y. Buffiere, R. Dendievel, G. Martin

## ► To cite this version:

T. Persenot, A. Burr, E. Plancher, J.-Y. Buffiere, R. Dendievel, et al.. Effect of ultrasonic shot peening on the surface defects of thin struts built by electron beam melting: Consequences on fatigue resistance. Additive Manufacturing, 2019, 28, pp.821-830. 10.1016/j.addma.2019.06.014 . hal-02405429

**HAL Id: hal-02405429**

**<https://hal.science/hal-02405429>**

Submitted on 21 Dec 2021

**HAL** is a multi-disciplinary open access archive for the deposit and dissemination of scientific research documents, whether they are published or not. The documents may come from teaching and research institutions in France or abroad, or from public or private research centers.

L'archive ouverte pluridisciplinaire **HAL**, est destinée au dépôt et à la diffusion de documents scientifiques de niveau recherche, publiés ou non, émanant des établissements d'enseignement et de recherche français ou étrangers, des laboratoires publics ou privés.



Distributed under a Creative Commons Attribution - NonCommercial 4.0 International License

# Optimization and comparison of porosity rate measurement methods of Selective Laser Melted metallic parts

Thibaut de Terris<sup>a,1</sup>, Olivier Andreau<sup>a</sup>, Patrice Peyre<sup>a</sup>, Frédéric Adamski<sup>a</sup>, Imade Koutiri<sup>a</sup>, Cyril Gorny<sup>a</sup>, Corinne Dupuy<sup>a</sup>

<sup>a</sup>Laboratoire PIMM, UMR 8006 Arts et Métiers-CNRS-CNAM, 151 Bd de l'Hôpital, 75013 Paris, France

---

## Abstract

The systematic occurrence of porosities inside selective laser melted (SLM) parts is a well-known phenomenon. In order to improve the density of SLM parts, it is important not only to assess the physical origin of the different types of porosities, but also to be able to measure as precisely as possible the porosity rate so that one may select the optimum manufacturing parameters.

Considering 316L steel parts built with different input energies, the current paper aims to (1) present the different types of porosities generated by SLM and their origins, (2) compare different methods for measuring parts density and (3) propose optimal procedures. After a preliminary optimization step, three methods were used for quantifying porosity rate: the Archimedes method, the helium pycnometry and micrographic observations.

The Archimedes method shows that results depend on the nature and temperature of the fluid, but also on the sample volume and its surface roughness.

During the micrographic observations, it has been shown that the results depend on the magnification used and the number of micrographs considered.

A comparison of the three methods showed that the optimized Archimedes method and the helium pycnometry technique gave similar results, whereas optimized micrographic observations systematically underestimated the porosity rate.

In a second step, samples were analyzed to illustrate the physical phenomena involved in the generation of porosities. It was confirmed that: (1) low Volume Energy Density (VED) causes non-spherical porosities due to insufficient fusion, (2) in intermediary VED the small amount of remaining blowhole porosities come from gas occlusion in the melt-pool and (3) in excessive VED, cavities are formed due to the key-hole welding mode.

## Keywords

Additive manufacturing; Selective Laser Melting; Porosity; Lack of fusion; Key-hole; Density measurement; Archimedes method; Helium pycnometry; Micrographic cross section

---

## 1. Introduction

The development of Metallic Additive Manufacturing (AM) has greatly expanded since the early 2000s. AM enables the production of components with complex geometries which are impossible to fabricate with conventional processes (forge, foundry,...). Metallic AM processes can be classified in two main categories: (1) direct deposition techniques and (2) powder bed fusion techniques. The first category consists in depositing matter via projected powder or a feeding wire, melted by either a laser or an electric arc. In the second category, the powder-bed can be melted using a laser beam, such as Selective Laser Melting (SLM), or using an electron beam as in the Electron Beam Melting process (EBM). A third technology, the Metal binder jet printing, is also in full development [1]. There is growing interest in AM because of the wide range of metallic materials that can be used to produce increasingly complex parts. Different applications in various fields such as aeronautics and space,

---

1 Corresponding author.

E-mail address: [thibaut.de\\_terris@ensam.eu](mailto:thibaut.de_terris@ensam.eu) (T. de Terris).

transport, energy, medical, [2–6] already exist. Moreover, AM can provide mechanical properties that are similar or better than conventional processes (such as casting or forging) [5,6].

There are two main common defects in SLM which directly influence the mechanical properties of the parts: a deleterious surface roughness (with Ra usually superior to 7  $\mu\text{m}$ ) and the systematic occurrence of porosities inside the final parts. These defects and their origin are well described by [7] for Ti-6Al-4V and 316L stainless steel. [8] also indicates that compared to wrought parts, SLM parts have a significantly lower fatigue life behavior in multiaxial loading conditions, due to internal defects which cause stress concentration.

There are three 1<sup>st</sup> order parameters in SLM which directly impact the quality of the fusion: the laser power  $P$  (W), the scanning speed  $V$  ( $\text{mm}\cdot\text{s}^{-1}$ ) and the laser beam diameter  $D$  (mm). These parameters can be united in a single parameter called Volume Energy Density (VED) [9–11] (Eq. 1). It is also possible to consider other parameters such as the powder layer thickness  $\Delta h$  ( $\mu\text{m}$ ) or the hatch spacing  $H$  ( $\mu\text{m}$ ) between adjacent fusion lines.

$$VED = \frac{4 * P}{V * \pi * D^2} \quad (1)$$

With:  $VED$  : Volume Energy Density ( $\text{J}\cdot\text{mm}^{-3}$ ),  $P$  : laser power (W),  $V$  : scan velocity ( $\text{mm}\cdot\text{s}^{-1}$ ),  $D$  : laser beam diameter (mm)

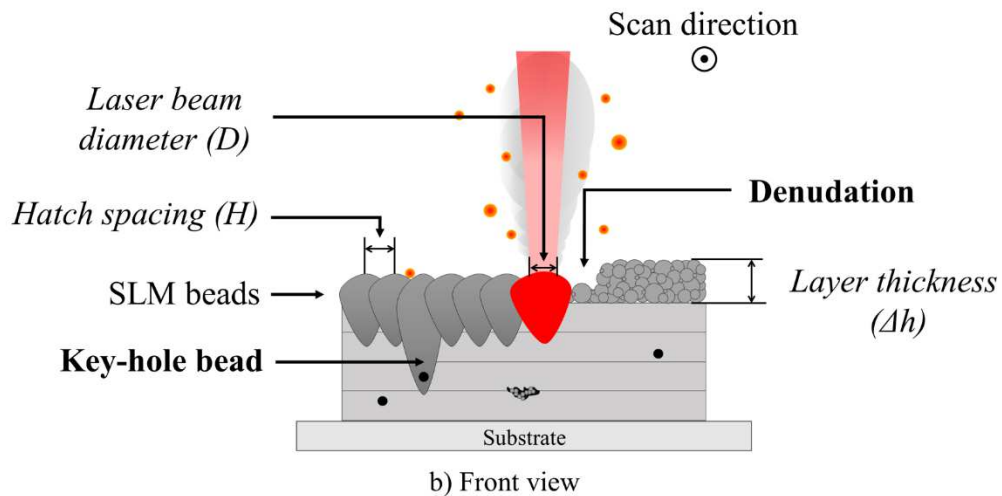
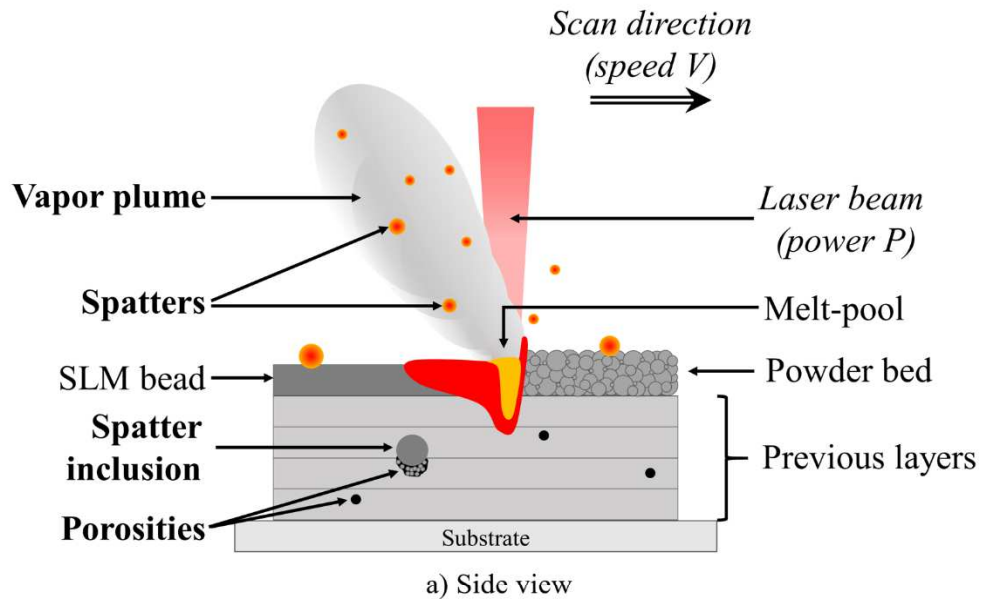
Several recent works [12–14] have shown that increased VED favors densification. Below a given VED threshold, SLM conditions do not allow for sufficient re-melting of the prior layer, leading to a lack of fusion (LOF) which results in residual pores forming in-between layers. Studies also show that small ( $< 10 \mu\text{m}$ ) blowhole pores (coming from gas entrapment in powder particles and in the powder layer or from powder humidity) are formed throughout the VED range [7]. At high VED, and depending on powder material, the porosity rate may once again increase as shown by [15] and [16].

Various physical phenomena (Figure 1) can explain the presence of local unmelted zones inside a part. These are listed here below:

- Inappropriate manufacturing parameters, mostly corresponding to insufficient VED, can lead to poor overlap between SLM fusion beads (= fusion lines) and thereby increase the amount of unmelted zones. Too much hatching distance and excessive powder layer thickness can also generate a lack of cohesion between SLM beads [17].
- A high VED leads to the formation of a vapor plume. The interaction between this vapor plume (generated above the impact zone) and the laser can lead to the formation of porosities [18]. As shown by [19] this vapor plume is composed of macro droplets and nanocondensates which interfere with the laser by absorbing the radiation, hence limiting the bead penetration and possibly promoting LOF.
- The presence of spatter ejections on the powder bed can also generate porosities. The size of the spatters, usually much larger than the powder grains ( $< 50 \mu\text{m}$ ), can prevent the powder from spreading homogeneously around the spatter, thus increasing the risk of LOF [10,20]. According to [10] there are three types of spatter ejections : (1) metal jet caused by the recoil pressure of the vapor plume associated with the extreme expansion of the powder phase gas, (2) droplet spatters ejected from the turbulent melt-pool flow, (3) powder spatters generated at the powder layer/melt- pool front interface.
- The phenomenon of powder denudation investigated in [21] where the powder surrounding the bead is attracted towards it and causes a lack of powder on both sides of SLM beads. This has two effects: (1) the local powder thickness for the next layer is higher, (2) a non-optimal

lateral overlap between beads, due to an excessive hatching distance, which can be a source of LOF [17].

- Melt-pool hydrodynamic instabilities like balling (favored by low VED) or humping (which appears at high laser powers and velocity) [16,19] and vaporization affect bead geometry.



**Figure 1 – main physical phenomena occurring during Selective Laser Melting**

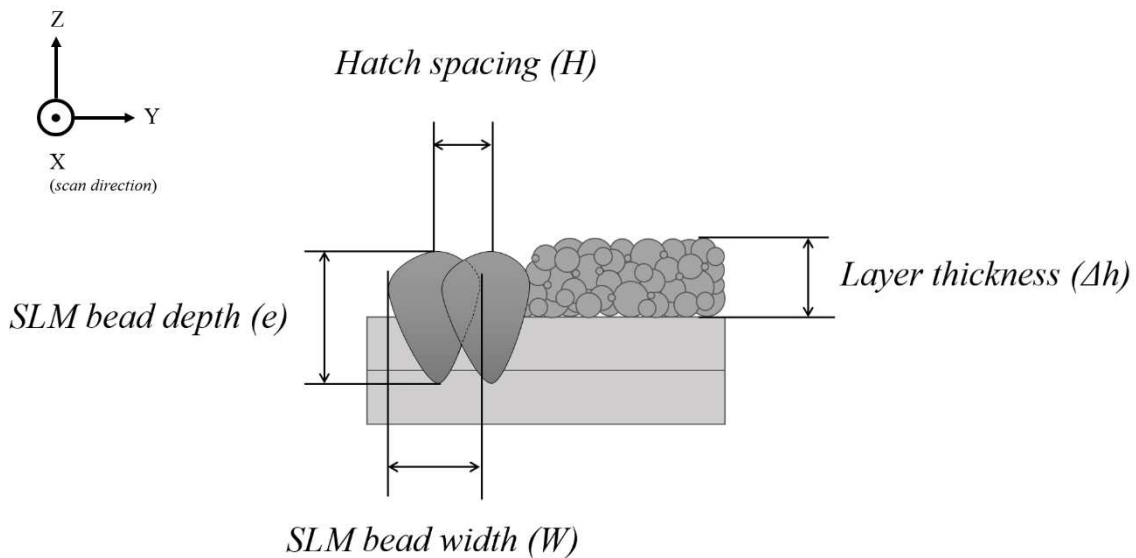
Noting the importance of bead dimensions combined with the hatching distance  $H$  ( $\mu\text{m}$ ) and the layer thickness  $\Delta h$  ( $\mu\text{m}$ ), Tang [22] suggested a formula (Equation 2) to geometrically estimate if the overlap is sufficient to avoid LOF. In the Equation 2,  $W$  is the SLM bead width and  $e$  is the SLM bead depth (in  $\mu\text{m}$ ) measured in a cross-section which is perpendicular to the scan direction as described in Figure 2.

It can be clearly seen in Figure 2 that to avoid LOF between each of the SLM beads,  $W$  must be higher than  $H$  in order to guarantee a sufficient lateral overlap, and  $e$  must be higher than  $\Delta h$  to provide a

sufficient remelting (vertical overlap) of the previous layers and avoid LOF between each of the SLM layers.

$$\left(\frac{H}{W}\right)^2 + \left(\frac{\Delta h}{e}\right)^2 \leq 1 \quad (2)$$

With :  $H$  : hatching distance ( $\mu\text{m}$ ),  $W$  : SLM bead width ( $\mu\text{m}$ ),  $\Delta h$  : layer thickness ( $\mu\text{m}$ ),  $e$  : SLM bead depth ( $\mu\text{m}$ )



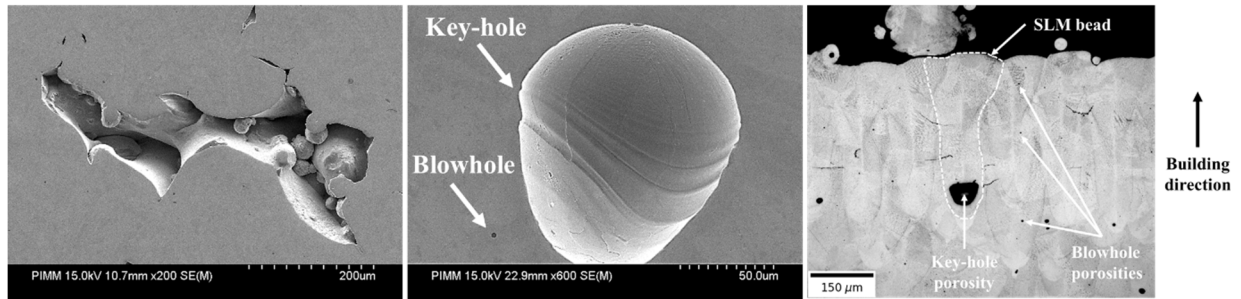
**Figure 2 – illustration of the key dimensions to estimate the formation of LOF, according to [22]**

As indicated before, LOF porosities exhibit angular and random morphologies (Figure 3a), of relatively large sizes ( $\ll 100 \mu\text{m}$ ) and contain unmelted powder. They are located mainly in-between SLM beads and come either from a poor choice of parameters or from process instabilities.

A number of near-spherical porosities will always remain, even with a correctly optimized SLM process. They can be divided in two types: blowhole pores and key-hole pores.

- Blowhole pores (Figure 3b) reflect the presence of gas bubbles trapped in the material upon solidification. They are mostly dependent on the properties of the powder bed (compactness, powder contamination) and on the work atmosphere (shielding gas, humidity) as explained by [7]. A powder layer usually has a compactness of around 50 %. During the melting of a layer, a fraction of the gas contained between the powder particles cannot escape before the solidification and gets entrapped as bubbles in the SLM bead. These spherical porosities are located in the heart of a bead and are much smaller than those related to the key-hole.
- At high laser intensity (for  $I > 10^6 \text{ W.cm}^{-2}$  according to [23]) the SLM welding regime turns from a conduction mode into a key-hole mode [24]. Recoil pressure on the melt-pool generated by intense metal vaporization can create a vapor capillary (key-hole). When the laser beam is absorbed by the key-hole walls rather than the layer surface, this significantly increases the penetration depth and generates thin and deep fusion beads (Figure 3c) as shown by [25]. In this case, porosities come from the collapse of key-hole walls under the action of surface tensions. The destabilization and resulting closure forms near-spherical large cavities with entrapped gas, located near the SLM bead root. Previous works [24,25] considered the Width-to-Depth Ratio of fusion beads ( $\text{WDR} = W/e$ ) to distinguish conduction mode welds (for  $\text{WDR} > 1$ ) from key-hole mode welds ( $\text{WDR} \ll 1$ ).

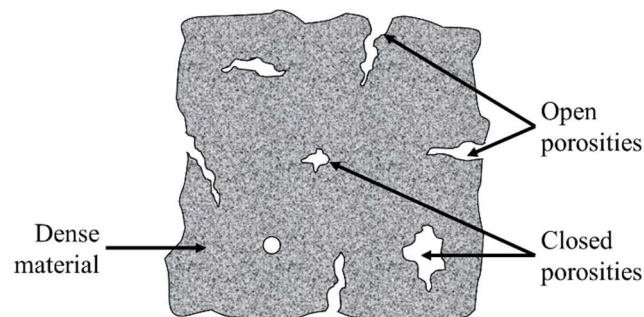
Examples of typical porosities obtained during our SLM experiments on 316L steel are shown in Figure 3.



**Figure 3 – types of porosities obtained on 316L steel: (a) lack of fusion, (b) blowhole, (c) key-hole cavity**

The generation of porosities is a function of manufacturing conditions. It is important to know their physical origins to be able to limit their formation. It is also important to develop experimental methods that permit the analysis of porosity amounts as quickly and as efficiently as possible. Using either micrographic analysis of cross sections [16,26], Archimedes method [27,28] or computed tomography [16,28,29], a number of recent works have considered how porosity amounts vary according to SLM conditions. However, there are very few studies that compare experimental methods to one another [28–30], and there is a lack of details about which experimental procedures are the most reliable for estimating porosity amounts. Another problem is the lack of uniformity in the results of many recent studies. For example [29] shows a high degree of correlation between Archimedes method and micrographic analyses, while [28] shows these methods yield different results.

The objective of the present paper is: (1) to compare and validate several experimental methods for evaluating closed porosities in SLM parts, (closed porosities are those that are completely isolated inside of the metal, whereas open porosities are pores near the part surface that are not completely enclosed, as shown in Figure 4), and (2) to apply the methods to the study of porosity formation in 316L stainless steel samples.

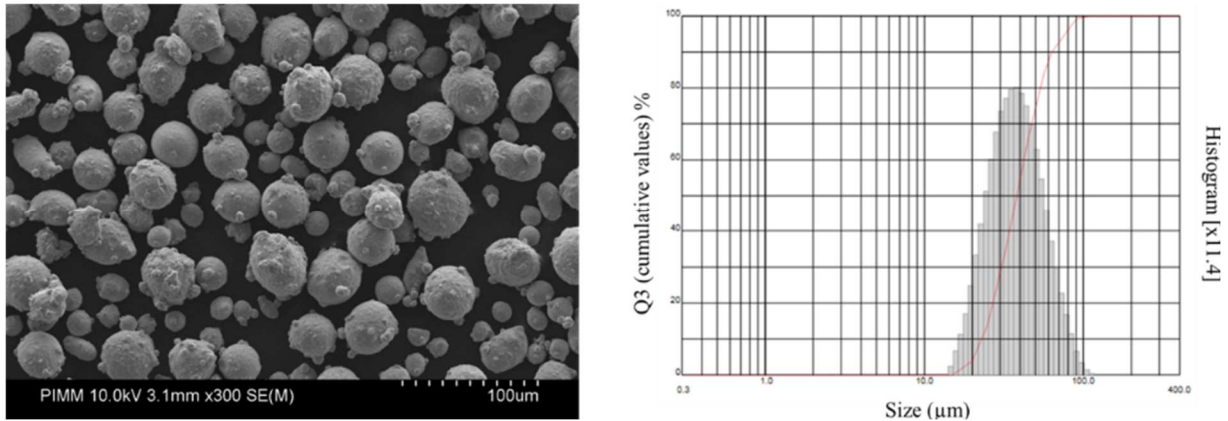


**Figure 4 – open and closed porosities**

## 2. Experimental methods

## 2.1. Material

The material used for SLM experiments was a gas-atomized 316L stainless steel powder. Particles had a spherical morphology, with a few agglomerated satellites. Their size was between 25  $\mu\text{m}$  (D10) and 60  $\mu\text{m}$  (D90) (Figure 5). The theoretical density of 316L stainless steel is  $7.99 \text{ g.cm}^{-3}$  according to the supplier material data sheet. The chemical composition is given in Table 1.



*Figure 5 – 316L powder, (a) particles morphology and (b) size distribution*

Fe	Cr	Ni	Mo	Mn	Si	C	N	P	S	O
Balance	17,7	12,7	2,31	0,89	0,61	0,018	0,09	0,008	0,004	0,028

*Table 1 – chemical composition of the powder (material data sheet)*

## 2.2. SLM conditions

The test samples used for this study were manufactured using an SLM125 HL machine, from SLM Solutions GmbH, under an argon atmosphere and less than 500 ppm  $\text{O}_2$ . They were rectangular cuboids of 10 x 10 x 25 mm.

The manufacturing parameters were kept similar, except for the scanning speed  $V$ , as summarized in the Table 2. The manufacturing strategy also remained the same (number of contours, lasing strategy and scheme, hatch distance).

Samples	P (W)	V (mm/s)	D (mm)	Volume Energy Density ( $\text{J.mm}^{-3}$ )
P2		1221		50
P3		814		75
P4		611	0,07	100
P5	235	489		125
P6		305		200
P7		244		250

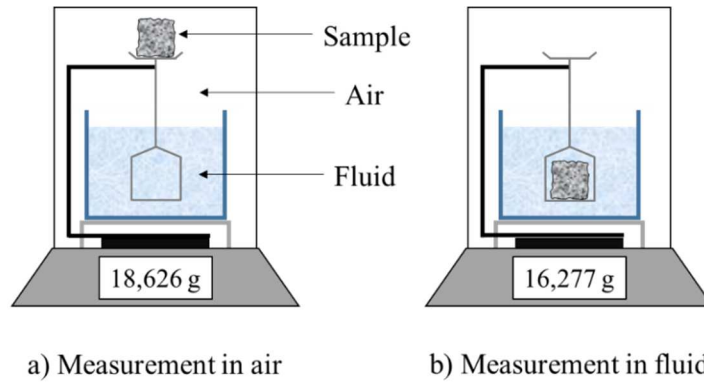
*Table 2 – manufacturing parameters of each samples*

## 2.3. Experimental methods and procedures for density measurements



### 2.3.1. The Archimedes method

The Archimedes measurements were performed according to the method described by [31]. The device used was a Mettler Toledo MS104TS hydrostatic weighing system equipped with a MS-DNY-43 solid sample weighing module. This technique is based on the principle of Archimedes: “A body wholly or partly immersed in a fluid is buoyed up by a force equal to the weight of the fluid displaced” [32] (the volume of the displaced fluid is therefore equal to the immersed volume of the body), which enables to determine the volume of the samples, and therefore their density. Samples are weighed in the air and then in a fluid as shown in (Figure 6).



**Figure 6 – Archimedes method density measurement**

The measurements make it possible to know the mass in the air ( $M_{air}$ ) and the mass in the fluid ( $M_{fluid}$ ) of each sample. And, knowing the density of the fluid ( $\rho_{fluid}$ , which varies with the temperature) and of the air ( $\rho_{air}$ ), it becomes possible to calculate the density of the samples according to the Equation 3 [28]:

$$\rho_{sample} = \frac{M_{air}}{(M_{air} - M_{fluid})} * (\rho_{fluid} - \rho_{air}) + \rho_{air} \quad (3)$$

With  $\rho_{sample}$  : sample density measured ( $\text{g.cm}^{-3}$ ),  $M_{air}$  : the mass of the sample in air (g),  $M_{fluid}$  : the mass of the sample in fluid (g),  $\rho_{air}$  : air density ( $\text{g.cm}^{-3}$ ),  $\rho_{fluid}$  : fluid density ( $\text{g.cm}^{-3}$ )

The comparison of the results obtained with the theoretical density of the material enables to calculate the porosity rate of the samples (Equation 4):

$$\% \text{ porosity} = 100 - \left( \frac{\rho_{measured} * 100}{\rho_{theoretical}} \right) \quad (4)$$

In this study, each sample was measured 10 times, and different fluids (demineralized water, pure ethanol and acetone) were tested. Corresponding fluid properties are shown in Table 3. Between each measurement the samples were oven-dried ( $110^{\circ}\text{C}$ , 30 minutes) to evaporate the water trapped in the open pores, in order not to influence the mass in the air during the next measurement. During the measurements it was noticed that air bubbles tend to settle on the surface of the samples because of the surface asperities. In order to improve the density results accuracy, air bubbles shall be removed. Hence, the samples were previously soaked and stirred in an auxiliary beaker containing the same fluid as the one used for the measurements, and the bubbles were evacuated with a brush. The



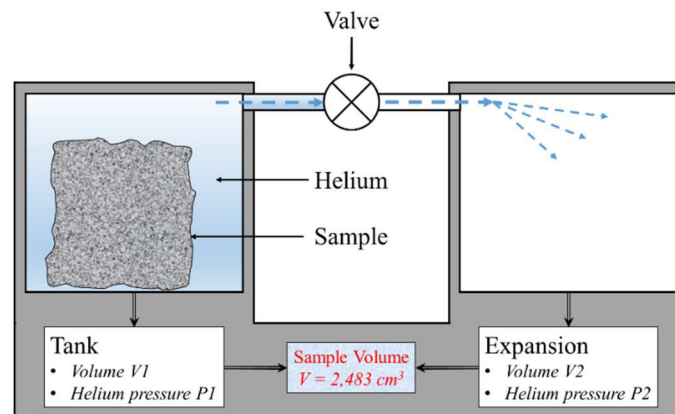
measurements in the fluid were performed with no visible bubbles remaining on the surface of the sample. With this method, a simple measurement takes about twenty seconds, not accounting for the sample preparation time and the analysis of the results, as well as the 10 necessary measurements.

Fluids	Density (20°C)	Surface tension (20°C, 1 bar)	Dynamic Viscosity (20°C)	$\Delta\rho$ (15°C – 25°C)
Demineralized Water	0,9982 g.cm <sup>-3</sup>	72,8.10 <sup>-3</sup> N.m <sup>-1</sup>	0,913.10 <sup>-3</sup> Pa s	0,20 %
Pure Ethanol	0,7892 g.cm <sup>-3</sup>	22,3.10 <sup>-3</sup> N.m <sup>-1</sup>	1,095.10 <sup>-3</sup> Pa s	1,09 %
Pure Acetone	0,7845 g.cm <sup>-3</sup>	23,7.10 <sup>-3</sup> N.m <sup>-1</sup>	0,316.10 <sup>-3</sup> Pa s	1,31 %

**Table 3 – physical properties of fluid used in Archimedes method ( $\Delta\rho$  = variation of density in the 15-25°C temperature range)**

### 2.3.2. Helium pycnometry

The Helium pycnometry measurements were performed on a Micromeritics AccuPyc 1330 device. This technique makes it possible to determine the absolute density of a sample (solid or powder) after the measurement of its volume. The measurement process consists in placing a sample in a tank whose volume  $V_1$  is calibrated and perfectly known, at atmospheric pressure  $P_a$ . This tank is then filled with helium at a pressure  $P_1$ . The gas is then expanded to a pressure  $P_2$  in another atmospheric pressured empty vessel (called expansion), of a volume  $V_2$  (Figure 7).



**Figure 7 – helium pycnometry density measurement**

The pycnometer measures the volume of a displaced gas from a primary tank ( $V_{\text{tank}}$ ) at a pressure  $P_1$  to an expansion tank ( $V_{\text{expansion}}$ ) at a pressure  $P_2$ . The pressure variation permits to determine the volume of the sample ( $V_{\text{sample}}$ ) and the application of the Mariotte's law allows calculating this volume (Equation 5):

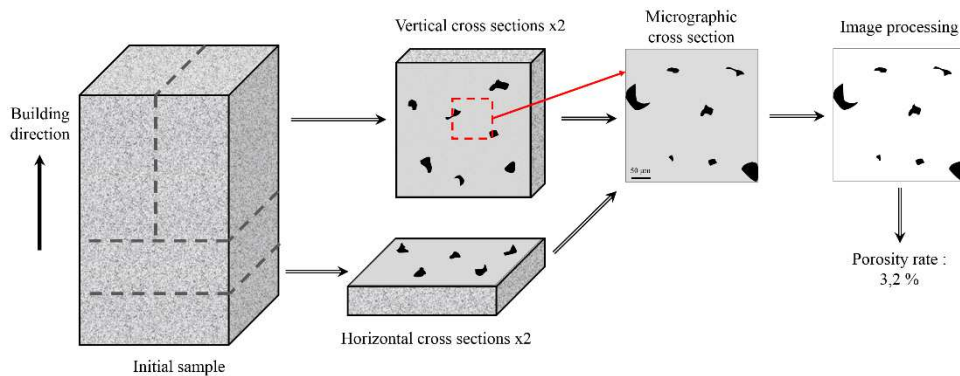
$$V_{\text{sample}} = \frac{V_{\text{tank}} - V_{\text{expansion}}}{\frac{P_1 - P_a}{P_2 - P_a} - 1} \quad (5)$$

With  $V_{\text{sample}}$  : sample volume measured (cm<sup>3</sup>),  $V_{\text{tank}}$  : volume of the sample tank (cm<sup>3</sup>),  $V_{\text{expansion}}$  : volume of the expansion tank (cm<sup>3</sup>),  $P_1$  : gas pressure in the sample tank (kPaG),  $P_2$  : gas pressure in the expansion tank (kPaG),  $P_a$  : atmospheric pressure (kPa)

Since the mass has been measured accurately beforehand, and knowing the volume of the sample, it is possible to calculate its density. In the case of helium pycnometry, several purge cycles are previously performed to remove all the air present in the tank and in the open pores of the sample. Then 10 successive measurements are made while keeping the tank closed and airtight. Samples were oven-dried at 110°C during 30 minutes, and air cooled before helium pycnometry measurements. This method, composed of 10 cycles, takes about 45 minutes per sample.

### 2.3.3. Micrographic cross section

SLM Samples were cut, resin mounted and polished to realize micrographs. These micrographs were acquired on the XY (perpendicular to the manufacturing direction) and YZ (parallel to the manufacturing direction) planes (Figure 8) using a ZEISS Axio Imager optical microscope. Three different magnifications were compared (x50, x100 and x200) as well as various number of micrographs. The images were acquired in similar light conditions and were binarized using the same threshold. They were analyzed by image processing (Python script) to know the porosity rate of the sample (ratio between the number of black pixels and the number total of pixels). It has to be noticed that, unlike the first two methods, micrographic analysis provides a porosity rate and not a density measurement.



**Figure 8 – micrographic cross sections porosity measurement**

According to [13], micrographs can also be used to calculate pore circularity (PC) and determine their origins. The closer (PC) is to 1 (which is the maximum), the more circular is a pore. A low PC corresponds to LOF porosities whereas higher PC provides an estimation of entrapped gas porosities. This shape factor can be calculated with the following formula (Equation 6) where PC is the pore circularity, A the pore area (pix<sup>2</sup>) and Pp the pore perimeter (pix) :

$$PC = \frac{4 * \pi * A}{Pp^2} \quad (6)$$

With: A : the pore area (pix<sup>2</sup>), Pp : the pore perimeter (pix)

This analysis is complementary to the Archimedes method or helium pycnometry because it allows to locate the pores in the sample, in order to estimate their size and shape. However it should be reminded that the closed pores related to a lack of fusion are full of powder whereas retained powder is removed during the polishing of the surface. This can induce a difference between the results of the various methods, especially for samples containing many LOF porosities. On the other hand, the

metallographic method does not take into account the entire sample, but is only representative of the observed zones. This method last at least three minutes, considering only the micrographs acquisition of 4 different analyzed surfaces.

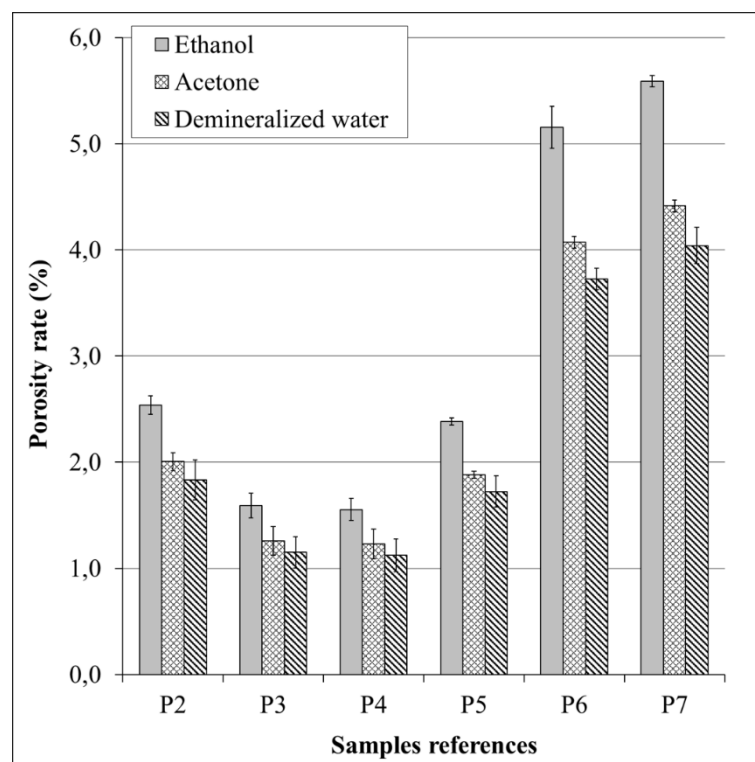
### 3. Comparison and optimization of experimental methods for porosity rate determination : experimental results and discussion

To achieve the most accurate measurements possible with the Archimedes and micrographs methods, various tests were conducted to determine the ideal measurement conditions for both methods.

#### 3.1. Optimization of the Archimedes method

Concerning the Archimedes method, different fluids (such as demineralized water, pure ethanol and acetone) were tested. Then the influence of surface roughness and sample volumes on measurement accuracy was addressed.

First, it appears clearly that demineralized water shows the lowest porosity rate among all the fluids (unlike [27] which does not show differences between water and acetone), but the highest standard deviation. Pure ethanol exhibits the highest porosity rate with the lowest standard deviation (Figure 9).



*Figure 9 – comparison of the porosity rate of P2 to P7 samples according to the fluid used*

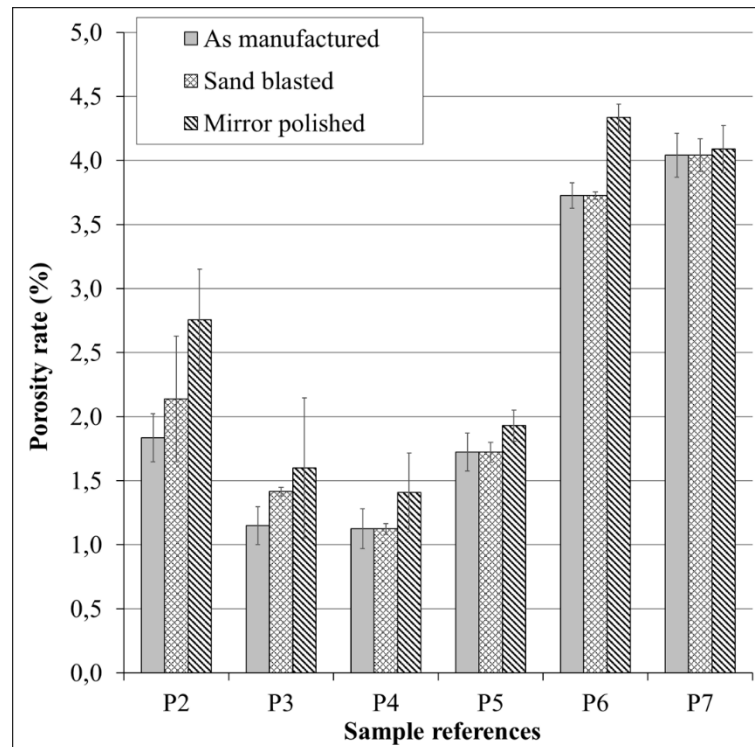
Figure 9 also shows that the measured densities of the samples are extremely dependent on the value of the actual density of the fluid at the time of measurement. Since this true density value is not exactly known during the measurement, the theoretical density was considered and determined via tables (such as the International Alcoholometric Tables [33]), knowing the temperature of the fluid.

The end result is therefore particularly dependent on the chemical composition and temperature of the fluid, and the accuracy with which the temperature is measured. Thus, a slight inaccuracy in the measurement of the fluid temperature combined with a large  $\Delta\rho$  parameter (Table 3) has a clear influence on the final result. As an example, in the case of a sample with a low porosity rate ( $\sim 0.5\%$ ), a variation of  $\pm 0,5\text{ }^\circ\text{C}$  on the measured temperature leads to a difference of  $\pm 9,2\%$  on porosity rate with ethanol, whereas the same measurement using demineralized water would lead to a difference of  $\pm 3,5\%$ . This trend tends to decrease with higher porosities.

In addition, the differences obtained can be related to the difference in surface tensions between the fluids (Table 3). This difference affects the ability of the fluid to correctly wet the entire surface of the samples. Due to its low surface tension, ethanol is expected to better wet the samples, and thus yield lower porosity rates than those obtained with demineralized water. However, the results do not confirm this assumption. An explanation may be that low surface tensions stabilize occluded bubbles in a fluid, thus stabilizing air bubbles.

The comparison of experimental data provides similar evolution of porosity rate with experimental conditions for the three fluids. It was chosen to perform further optimization with water as the standard deviation obtained with demineralized water remained around 10% of the porosity rate value. Moreover, the choice of demineralized water is also validated by the fact that pure acetone and ethanol are hygroscopic. This property makes their purity deteriorate with time, as they absorb the water from the air.

In a second step, samples were polished to modify their surface roughness ( $S_a$  in  $\mu\text{m}$ ) in order to address the influence of surface finish on the accuracy of density measurements, through possible variations of wetting. Indeed it was supposed that a sample with a high  $S_a$  is more likely to entrap air bubbles and to affect results. Three  $S_a$  conditions were compared: as SLM-built ( $\sim 12 \pm 2\ \mu\text{m}$  for the 7 experimental conditions), mirror polished ( $\sim 0.01\ \mu\text{m}$ ) and sand blasted ( $\sim 4\ \mu\text{m}$ ). It can be seen that for “as manufactured samples” (high  $S_a$ ), the porosity rate and the standard deviation are lower than for the “mirror polished” (Figure 10). A possible explanation may be that mirror polishing or sandblasting texturize the surface relatively homogeneously, thus making it hydrophobic according to a possible “Lotus Effect” [34]. Indeed, lotus leaves are well known to be hydrophobic : water droplets falling onto the leaves will bead of and roll on, but they do not wet the surface. This is due to the surface micro-texture of the leaves. They are covered with micro-papilla ( $\sim 10\ \mu\text{m}$  height), themselves covered with nano-papilla ( $\sim 100\ \mu\text{m}$ ). It provides air pocket formation, thus, water can only interact with the peaks of the roughness surface instead of wetting the entire surface, including peaks and valleys. First, the formation of micro air pocket at the sample surface can distort the results, and the wettability of the samples being greatly reduced. This would lead to an overestimation of the measured volume, and an underestimation of porosity rate. On the other hand, the “as manufactured” surface can absorb the fluid by capillarity and increase the wettability of the surface.

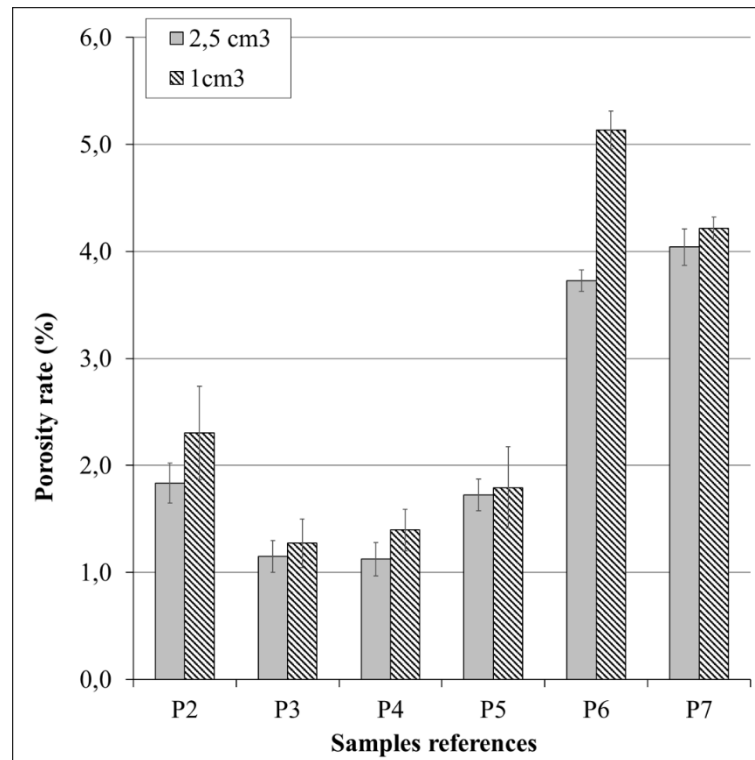


**Figure 10 – comparison of the porosity rate of P2 to P7 samples according to their surface finish (experiments in water)**

Finally, samples were cut to determine the influence of the analyzed volume. Initially they were around 2.5 cm<sup>3</sup> and they were cut to obtain samples of 1 cm<sup>3</sup>. Results show that the higher the samples volume, the lower the porosity rate as well as the standard deviation (Figure 11). This means that minimizing the specific surface (S/V) is a key-point for stabilizing results.

To conclude, results presented here indicate that the Archimedes method should be preferentially used with demineralized water on “as manufactured” samples of at least 2 cm<sup>3</sup> in volume. Depending on experimental conditions, variations of up to +/- 20 % can occur for porosity rate values in the 1-5 % range. Other precautions are also recommended before starting measurements: (1) to clean samples in ultrasound bath to evacuate the powder stuck on the surface, (2) to dry them between each measurement and evacuate visible air bubbles by immersing samples in a beaker containing demineralized water and softly brushing them before measuring in the fluid.

It has also been observed that the larger the samples (at least 2 cm<sup>3</sup>), the more accurate the measurements and the lower the errors. For this reason, samples of 2.5 cm<sup>3</sup> have been preferentially considered in this study. However, using larger volumes can become problematic for both Archimedes method and helium pycnometry for which the size of the measurement cell is limited.



*Figure 11 – porosity rate of P2 to P7 samples according to their analyzed volume*

### 3.2. Micrographic method

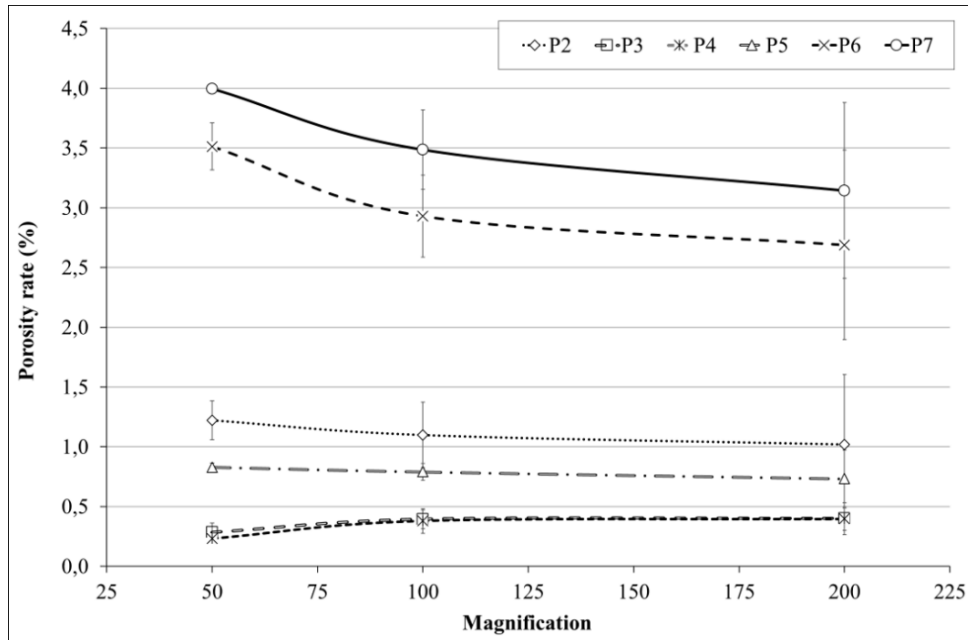
The micrographic method can be applied with different magnifications (x 50, x 100 and x 200) and the final results can vary a lot according to the number of pictures and the magnification considered.

The first step of the optimization was to determine which magnification is suitable for the porosity rate measurement. Indeed, a too low magnification could occult the small porosities, and a too high magnification could not be representative of the global sample. Microscope technical characteristics are summarized in the Table 4. Two areas of  $\sim 9,5 \text{ mm}^2$ , corresponding to one x 50 micrograph, were first analyzed for different samples. Then, the same areas were analyzed with the x 100 and x 200 magnifications (respectively 4 micrographs/area and 16 micrographs/area). It can be seen that the use of magnification increasingly important for the analysis tends to increase standard deviation (Figure 12) and to modify the porosity rate: porosity rates higher than 1 % (P6, P7) will tend to decrease, whereas under 1% they will increase. Those effects are more visible for samples with higher porosity levels, and are confirmed by [28]. In addition, the higher the porosity rate, the greater the standard deviations. Indeed, as porosities are not homogeneously distributed in the material, the porosity rate can vary between each micrograph leading to an increase in the standard deviation.

Micrographs obtained with a x100 magnification have pixel size of  $0.69 \mu\text{m}$  which means first that porosities with an area upper to  $0.5 \mu\text{m}^2$  can be detected and taken into account (which is subject to a correct contrast between the metal and the porosity when acquiring the micrographs, as well as a good definition of the porosities contours). That is also why, this magnification was selected for porosity analysis.

Magnification	Resolution	Micrograph size	Acquisition time of an area of $38 \text{ mm}^2$
x50	$1.374 \mu\text{m} / \text{pix}$		6 seconds (4 micrographs)
x100	$0.689 \mu\text{m} / \text{pix}$	$2452 * 2056 \text{ pix}$	16 seconds (16 micrographs)
X200	$0.343 \mu\text{m} / \text{pix}$		53 seconds (64 micrographs)

**Table 4 – Main technical characteristics of the optical microscope**



**Figure 12 – porosity rate of 5 samples according to the micrographic magnification (analyzed surface = 19 mm<sup>2</sup>)**

In a second step, the number of pictures required to provide satisfactory results was determined with the x100 magnification. For the previous samples (Figure 13) it appears that for the highest porosity rates (> 1%), at least 20 micrographs are needed to obtain a stabilized value (Figure 13a) whereas Figure 13b shows that the standard deviation is not stabilized before using 45 micrographs. For samples with a porosity rate below 1%, only 20 micrographs are shown to be sufficient to obtain stabilized porosity rates and standard deviations.

Finally, a possible procedure would be as follows: (a) a first micrograph has to be taken to estimate the porosity rate at x100 magnification, (b) if the value is higher than 1%, 45 micrographs have to be considered (analyzed area ~ 107 mm<sup>2</sup>) and if the value is lower than 1%, 20 micrographs are enough (analyzed area ~ 47 mm<sup>2</sup>).

For those reasons, the next micrographic analyses were carried out with the x100 magnification and with either 20 or 45 micrographs for each analyzed surface.



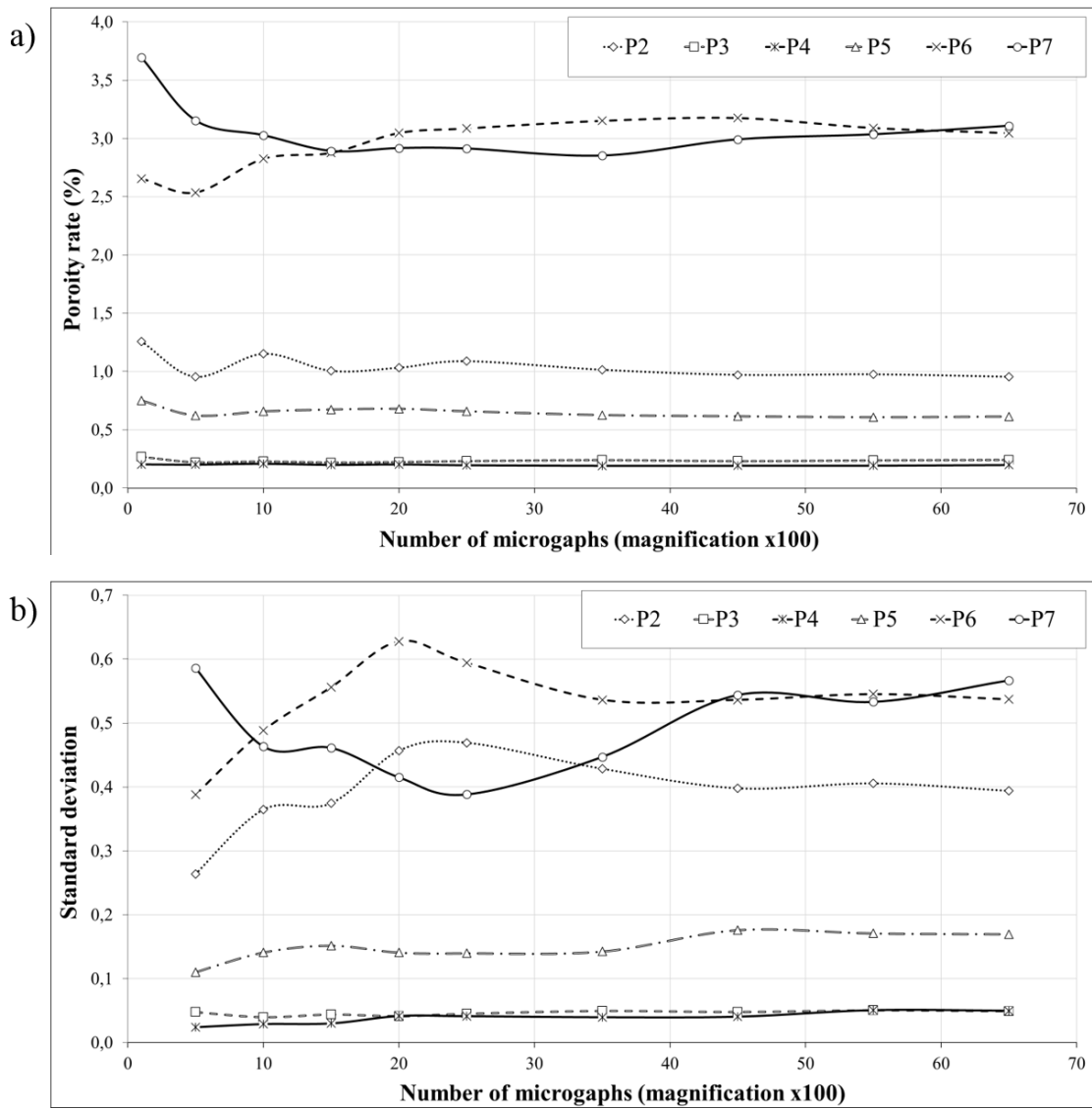
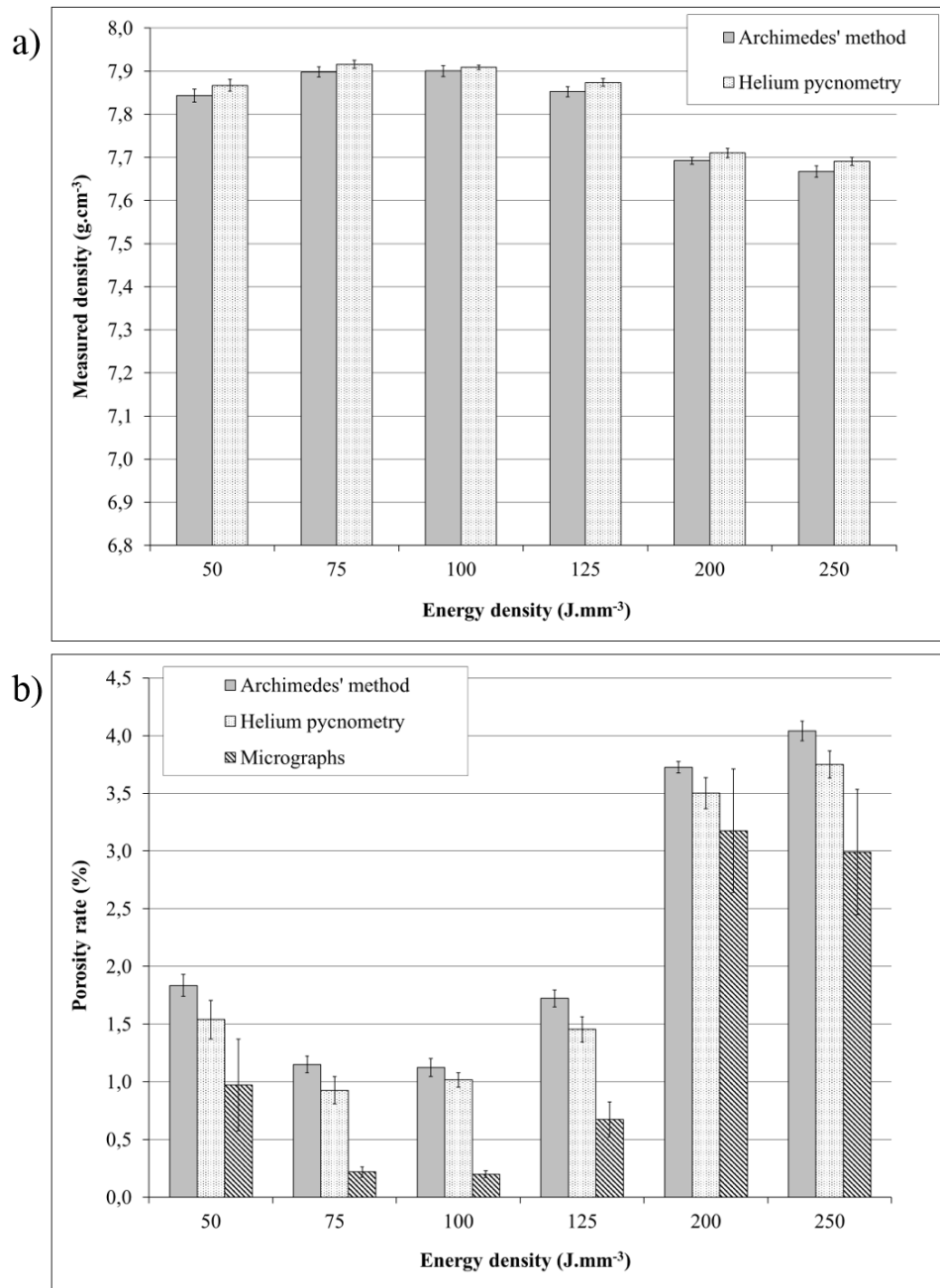


Figure 13 – porosity rate (a) and standard deviation (b) of P2 to P7 samples according to the number of micrographs analyzed

### 3.3. Comparison of the optimized measurement methods

Density measurements for Archimedes and helium pycnometry methods, and porosity calculations for the three methods are compared in Figure 14 with error bars corresponding to the standard deviations.



**Figure 14 – (a) density measurements and (b) porosity rate estimation for P2 to P7 samples (50 to 250 J/mm<sup>3</sup>)**

First of all, it clearly appears that at low VED, the energy injected in the powder is not large enough to perfectly melt it. This results in very porous samples (P2 = 50 J/mm<sup>3</sup>). An increase of the VED leads to a better densification of the samples (P3 = 75 J/mm<sup>3</sup>, P4 = 100 J/mm<sup>3</sup>). Above a certain VED threshold (>120 J/mm<sup>3</sup>), the porosity rate increases in correlation with the formation of a key-hole regime (samples P6 = 200 J/mm<sup>3</sup> and P7= 250 J/mm<sup>3</sup>). This tendency is well known and several authors [12–14] have already observed it on various materials (such as aluminum alloys, maraging steels, stainless steels) processed using various manufacturing parameters.

The increase in porosity rate observed at high VED, and assumed to be due to the destabilization of the key-hole welding mode is in full agreement with a recent simulation work by Tang [35].

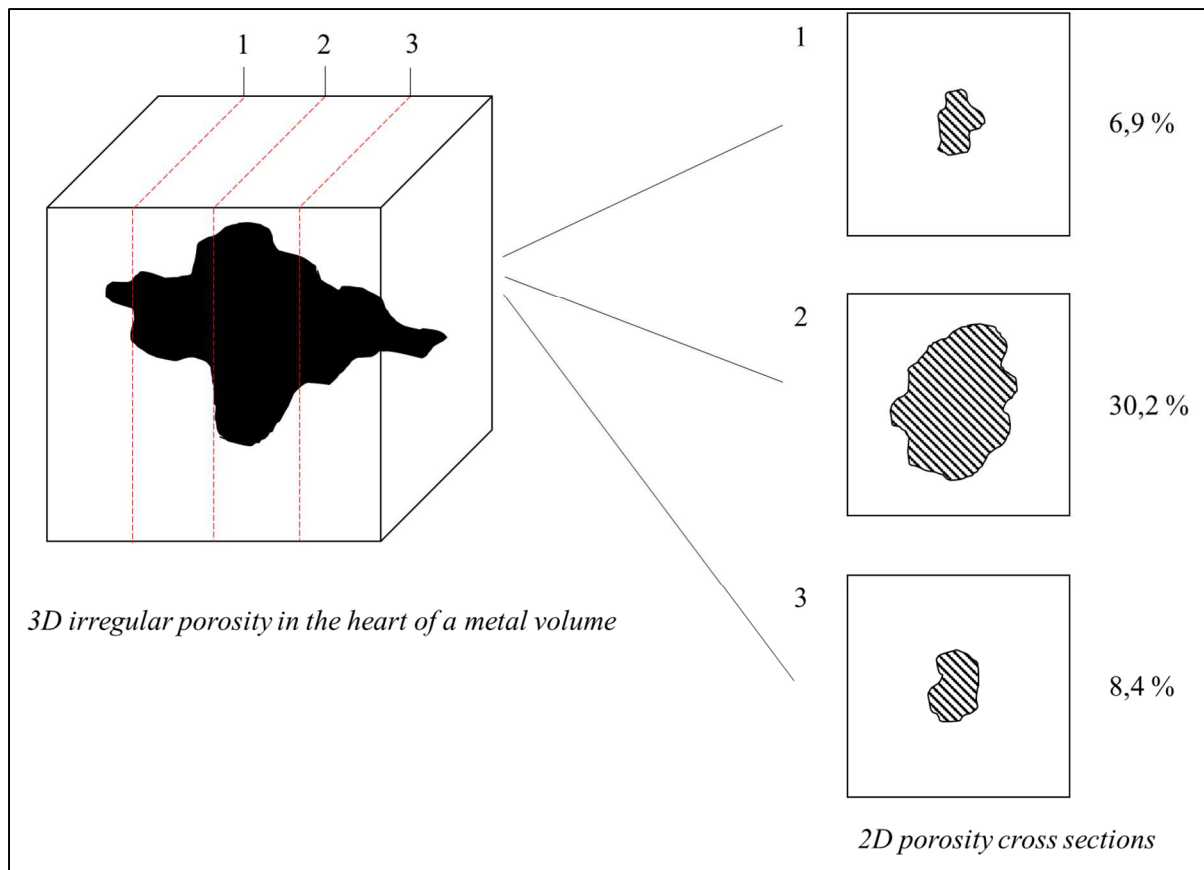
Moreover, it can be seen (Figure 14a) that the two methods (Archimedes and Pycnometry) which give a quasi-direct access to the density of each sample give rather similar results with less than 0.3 % difference in porosity rate (Figure 14b). This is in contradiction with [29] who did not find a good accuracy in pycnometry measurements of samples having a low porosity rate (<0.5%). The reason why lower porosity rates are obtained with helium pycnometry is possibly due to the fact that open pores are more likely to be filled with small helium atoms (0.31 Å) than with larger water molecules (2.75 Å). Thus fewer porosities will be considered with helium measurement. Another explanation is related to the difference of dynamic viscosities of helium and water, the first one being more than 40 time less viscous (Helium 25°C, 1 bar : 19.68.10<sup>-6</sup> Ns/m<sup>2</sup> ; water 25°C, 1 bar : 891.10<sup>-6</sup> Ns/m<sup>2</sup>). This is assumed to be the main reason why the density values obtained by helium pycnometry are greater than those obtained by the Archimedes method.

Considering these results and the theoretical density of the material (stainless steel 316L :  $\rho_{\text{theoretical}} = 7,99 \text{ g.cm}^{-3}$ ), it becomes possible to calculate the porosity rate of each sample, and for each measurement method (Figure 14b). However each theoretical density should be used with caution, and operators have to keep in mind that it probably does not correspond to the reality. Indeed, it is known that light elements used in alloys processed with SLM or EBM tend to evaporate [36,37], which modify the chemical composition and thus the material density.

According to Delesse's principle, which states that *"the ratio of the area occupied by a component relative to the entire profile area is a consistent estimate of the volume fraction of the component in the object"* [38], we should measure similar porosity rates with the Archimedes' method, the gas pycnometry and the micrographic cross section.

However, it appears that the micrographic cross sections method tends to underestimate the porosity rate, even if several cross sections are considered (parallel and perpendicular to the building direction), unlike [29] who shows similar results between the Archimedes method and the micrographic cross sections method. We can find that [39] explains that the Delesse's principle should be used carefully, and can be applied only if equal reference areas are used. It means that each micrograph must have the same size, which is our case in this study. This does not explain the underestimation of the porosity rates.

A possible explanation could be due to the porosities morphology, which is mainly random and irregular in additive manufacturing (especially for LOF at low VED, Figure 3a). Depending on the depth at which the section is made, the porosity section is very different and the Delesse's principle is not checked (Figure 15). That is why it can be necessary to repeat this method several times for a same sample (with a light polishing step between each observations), in order to stabilize the result by calculating an average porosity rate value over several sections.



**Figure 15 – porosity cross sections according to the depth of the micrographic section**

Another explanation may be that the sample surface or near-surface porosity rate, which are usually higher due to contour-hatching transitions, are not considered in the micrographic observation.

It is interesting to notice that in the case of the sample P2 ( $50 \text{ J/mm}^3$ ), LOF porosities are full of unmelted powder, which is taken into account during the Archimedes' Method or gas pycnometry. This gives the real volume of void for each porosity of the sample but, during the sample preparation for the micrographic cross sections analysis, this unmelted powder is evacuated from porosities and tends to distort the measured void volume.

Figure 16 and Figure 17 show micrographic cross-sections of each sample, before and after being etched with 92:5:3 reagent (92% HCl + 5% H<sub>2</sub>SO<sub>4</sub> + 3% HNO<sub>3</sub>, recommended in [40]) to reveal SLM beads. It can be seen that at low VED (sample P2,  $50 \text{ J.mm}^{-3}$ ), porosities are mainly LOF. The increase of the VED progressively leads to a better densification (sample P4). The remaining porosities are very localized melting defects (angular porosities) or entrapped gases (rounded porosities). These entrapped gas porosities can be promoted by the occurrence of a key-hole regime (larger pores), or by the presence of gas or humidity in the powder bed. Then, an excessive VED will melt the powder in key-hole mode and no longer in conduction mode, hence the presence of gas porosities (samples P5 to P7, respectively  $125$  and  $250 \text{ J.mm}^{-3}$ ).

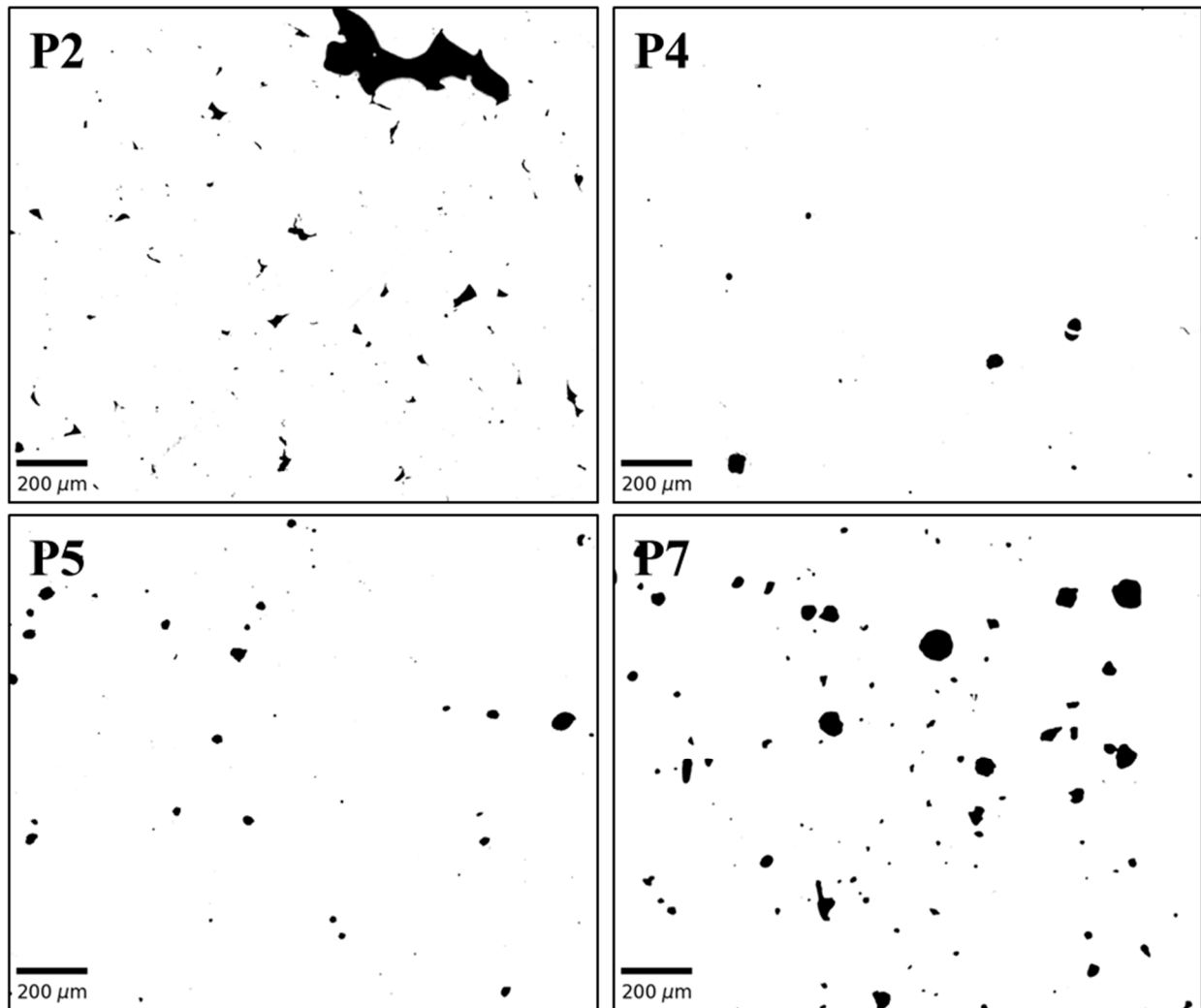
Bead geometries were analyzed on micrographic cross-sections (Figure 17), allowing to measure width to depth ratios (WDR). All the WDR are comprised between 0.48 and 0.8 (Table 6), which indicates that for all the experimental conditions  $e \gg D$ , and that a full conduction regime was not achieved. For all SLM conditions, bead shapes suggest the occurrence of key-hole formation, even if key-hole porosities are not visible in each sample micrographic cross sections (samples P2 or P3 for example).

Moreover, [41] suggests that lack of fusion porosity can be predicted by the SLM bead overlap versus their dimensions (Eq. 2). In the case where the bead overlap is inferior to 1, incomplete melting is avoided. It means that the overlap of SLM beads is sufficient between each bead of each layer, and between each layers of the sample to avoid LOF.

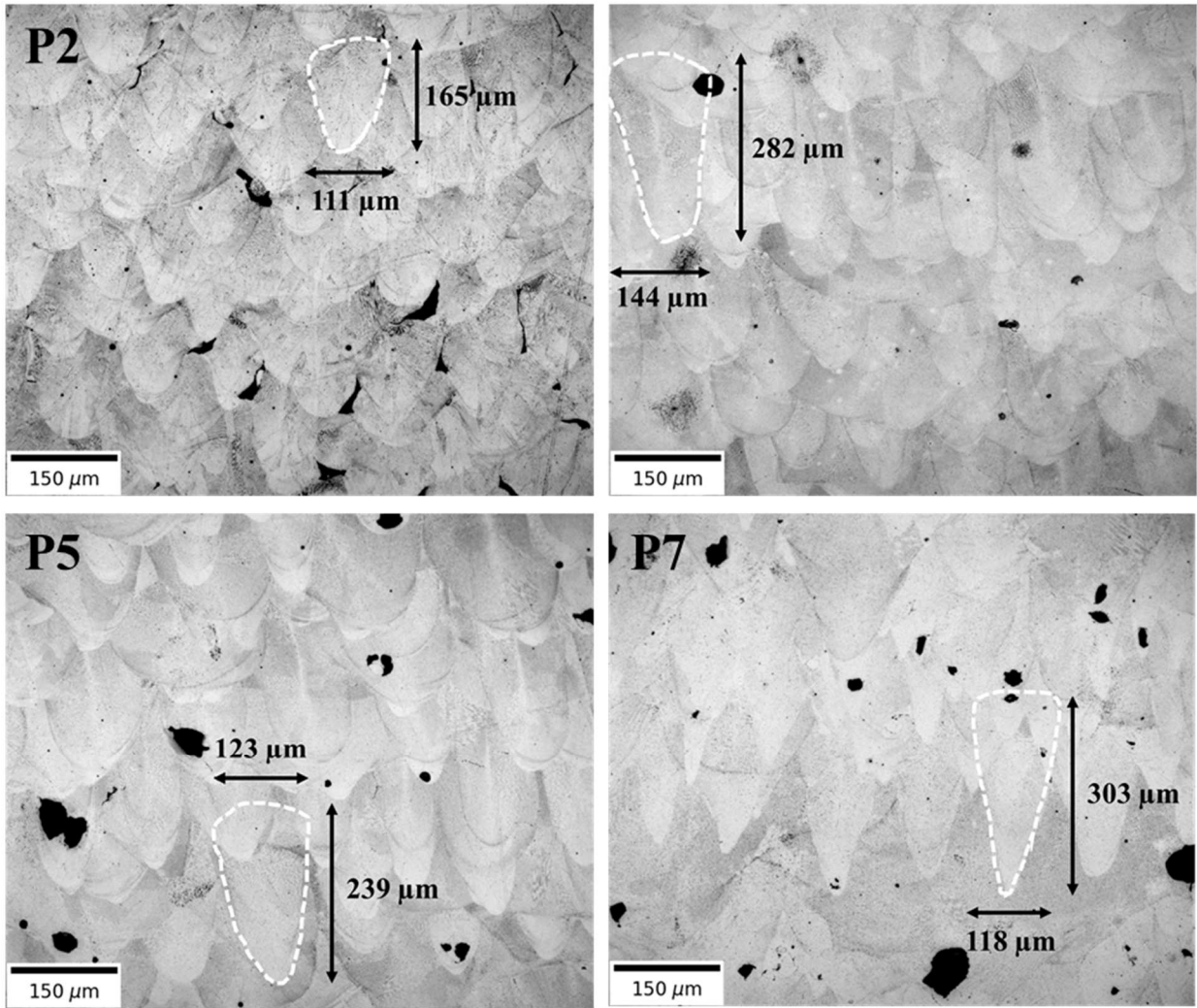
However, for all the conditions considered, the bead overlap is superior to 1 (Table 6), which means that Eq. 2 is not fully reliable to estimate the full consolidation limits.

Logically, the dimensional ratio calculated by eq.2 decrease as the densification increase, such as with sample P2 and sample P4 (respectively  $1,78 \pm 0,09$  and  $1,18 \pm 0,08$ ) (regardless gas porosities). This means that, even such ratios are superior to 1, they can be considered as an accurate geometrical method for estimating a-priori the degree of consolidation from the dimensions of single melt-pool geometries.

One explanation is that, at high VED, eq.2 is no longer relevant because porosities are not LOF anymore but entrapped gas due to the key-hole mode.



**Figure 16 – micrographic cross-sections of samples P2, P4, P5 and P7 samples (50, 100, 125 and 250 J/mm<sup>3</sup>) corresponding to respectively 1.8 %, 1.1%, 1.7 % and 5 % porosity rates (Archimedes method)**



**Figure 17 – SLM microstructures after chemical etching. Analysis of bead dimensions for samples P2, P4, P5 and P7 samples (50, 100, 125 and 250 J/mm<sup>3</sup>)**

	VED (J/mm <sup>3</sup> )	% porosity	WDR	Bead overlap
P2	50	1.835 +/- 0.188	0.8+/- 0.06	1.78 +/- 0.09
P4	100	1.124 +/- 0.156	0.48 +/- 0.01	1.18 +/- 0.08
P5	125	1.723 +/- 0.148	0.49 +/- 0.04	1.34 +/- 0.10
P7	250	4.04 +/- 0.172	0.5 +/- 0.03	1.47 +/- 0.03

**Table 6 – porosity measurements, bead dimensions and bead overlaps for P2, P4, P5, P7 samples**

The repeatability of the three methods is related to the standard deviations of the samples compared to their average porosity rate. The Table 7 shows that Helium pycnometry and Archimedes methods exhibit an error ratio equal or lower than 10% for 10 measurements. This shows that several measurements (10 in our case) give quite similar results.

However, repeatability is probably not the best criterion for choosing one method over another. We advise instead to choose the method depending on the type of sample (shape, size, destructible or not), the results we want to obtain (type of porosity, location, average porosity rate, trend between samples), the material available and the time allotted.

Samples references	Helium Pycnometry			Archimedes' Method			Micrographic cross section		
	%P	$\sigma$	ER	%P	$\sigma$	ER	%P	$\sigma$	ER
P2	1.539	0.168	10.9%	1.835	0.188	10.2%	1.009	0.43	42.6%
P7	3.751	0.118	3.1%	4.040	0.172	4.3%	2.412	0.499	20.7%

*Table 7 - Repeatability of the measurement for each method, where % P is the average porosity rate;  $\sigma$  is the standard deviation and ER the error ratio ( $ER=(\sigma*100)/\%P$ )*

#### 4. Conclusion

Based on a detailed comparison of three experimental methods, it can be concluded that the Archimedes' method carried out in demineralized water is a reliable technique for estimating porosity rate in SLM samples.

Pycnometry measurements using helium and independent measurements of masses and volumes can be considered the most accurate technique for measuring porosity. However, because helium pycnometry is very time consuming, this method is ill-adapted as a systematic porosity rate control method. The results obtained with the Archimedes' method are very similar to those obtained by helium pycnometry. Because the Archimedes' method is both rapid and reliable, it is an efficient alternative to helium pycnometry. Another advantage of the Archimedes' method is that it is a non-destructive technique.

To ensure the reliability of the Archimedes' method, some preliminary precautions are necessary: air bubbles must be evacuated with the aid of a brush before weighing the samples in the fluid and sufficiently large samples (2 cm<sup>3</sup> minimum) must be used. However, open porosities and powder grains agglomerated on the surface are known to skew the measurements.

On the other hand, the position and the type of porosities present in the samples can only be determined by micrographic cross-section analysis. Because this method measures a 2D fraction area of a 3D porosity, the technique tends to underestimate the real porosity rate. Moreover, the volume of the pores cannot be accurately measured, especially in the case of irregular LOF pores.

Finally it has been shown that the VED input affects the overall porosity rate. Low input energies favor LOF pores, while excessive energies promote key-hole pores and spatters. Between these two extremes there is a wide range of VED in which it is fairly easy to densify material up to 99%, whereas if the SLM parameters are correctly optimized, densities up to 99,95% [9] can be achieved.

#### 5. Acknowledgments

Authors would like to deeply thank the French Aerospace Lab (ONERA), and particularly Marc THOMAS, Odile LAVIGNE and Stefan DRAWIN for allowing them to carry out helium pycnometry measurements.

They would also like to thank BPI France for financial support of the FAIR project and Air Liquide for helpful discussions and technical support.

#### 6. References

- [1] P. Nandwana, A.M. Elliott, D. Siddel, A. Merriman, W.H. Peter, S.S. Babu, Powder bed binder jet 3D printing of Inconel 718: Densification, microstructural evolution and challenges, Curr. Opin. Solid State Mater. Sci. 21 (2017) 207–218. doi:10.1016/j.cossms.2016.12.002.



- [2] E. Herderick, Additive manufacturing of metals: A review, *Mater. Sci. Technol. Conf. Exhib.* 2011, MS T'11. 2 (2011) 1413–1425. <http://www.scopus.com/inward/record.url?eid=2-s2.0-84856301323&partnerID=40&md5=e02018d10b2ca37a7e2ae1773e4fcaec>.
- [3] B. Vayre, F. Vignat, F. Villeneuve, Metallic additive manufacturing: state-of-the-art review and prospects, *Mech. Ind.* 13 (2012) 89–96. doi:10.1051/meca/2012003.
- [4] EPMA, Introduction to additive manufacturing technology, a guide for designers and engineers, *Eur. Powder Metall. Assoc.* (2015) 28–34. [http://www.sf2m.asso.fr/CommissionsThematiques/DocComThematiques/EPMA\\_Additive\\_Manufacturing.pdf](http://www.sf2m.asso.fr/CommissionsThematiques/DocComThematiques/EPMA_Additive_Manufacturing.pdf).
- [5] D. Herzog, V. Seyda, E. Wycisk, C. Emmelmann, Additive manufacturing of metals, *Acta Mater.* 117 (2016) 371–392. doi:10.1016/j.actamat.2016.07.019.
- [6] W.J. Sames, F.A. List, S. Pannala, R.R. Dehoff, S.S. Babu, The metallurgy and processing science of metal additive manufacturing, *Int. Mater. Rev.* 61 (2016) 315–360. doi:10.1080/09506608.2015.1116649.
- [7] T. DebRoy, H.L. Wei, J.S. Zuback, T. Mukherjee, J.W. Elmer, J.O. Milewski, A.M. Beese, A. Wilson-Heid, A. De, W. Zhang, Additive manufacturing of metallic components – Process, structure and properties, *Prog. Mater. Sci.* 92 (2018) 112–224. doi:10.1016/j.pmatsci.2017.10.001.
- [8] A. Fatemi, R. Molaei, S. Sharifimehr, N. Phan, N. Shamsaei, Multiaxial fatigue behavior of wrought and additive manufactured Ti-6Al-4V including surface finish effect, *Int. J. Fatigue.* 100 (2017) 347–366. doi:10.1016/j.ijfatigue.2017.03.044.
- [9] A.M. Mancisidor, F. Garciandia, M.S. Sebastian, P. Alvarez, J. Diaz, I. Unanue, Reduction of the residual porosity in parts manufactured by selective laser melting using skywriting and high focus offset strategies, *Phys. Procedia.* 83 (2016) 864–873. doi:10.1016/j.phpro.2016.08.090.
- [10] D. Wang, S. Wu, F. Fu, S. Mai, Y. Yang, Y. Liu, C. Song, Mechanisms and characteristics of spatter generation in SLM processing and its effect on the properties, *Mater. Des.* 117 (2017) 121–130. doi:10.1016/j.matdes.2016.12.060.
- [11] V. Gunenthiram, P. Peyre, M. Schneider, M. Dal, F. Coste, I. Koutiri, R. Fabbro, Experimental analysis of spatter generation and melt-pool behavior during the powder bed laser beam melting process, *J. Mater. Process. Technol.* 251 (2018) 376–386. doi:10.1016/j.jmatprotec.2017.08.012.
- [12] N. Kaufmann, M. Imran, T.M. Wischeropp, C. Emmelmann, S. Siddique, F. Walther, Influence of process parameters on the quality of aluminium alloy en AW 7075 using Selective Laser Melting (SLM), *Phys. Procedia.* 83 (2016) 918–926. doi:10.1016/j.phpro.2016.08.096.
- [13] H. Gu, H. Gong, P. Deepankar, R. Khalid, S. Thomas, B. Stucker, Influences of Energy Density on Porosity and Microstructure of Selective Laser Melted 17-4PH Stainless Steel, *J. Chem. Inf. Model.* 53 (2013) 1689–1699. doi:10.1017/CBO9781107415324.004.
- [14] S.L. Campanelli, N. Contuzzi, A. Angelastro, A.D. Ludovico, Capabilities and Performances of the Selective Laser Melting Process, *Ew Trends Technol. Devices, Comput. Commun. Ind. Syst.* (2010) Chapter 13. doi:10.5772/10432.
- [15] Joon-Phil Choi, Gi-Hun Shin, Mathieu Brochu, Yong-Jin Kim, Sang-Sun Yang, Kyung-Tae Kim, Dong-Yeol Yang, Chang-Woo Lee, Ji-Hun Yu, Densification Behavior of 316L Stainless Steel Parts Fabricated by Selective Laser Melting by Variation in Laser Energy Density, *Mater. Trans.* 57 (2016) 1952–1959. doi:10.2320/matertrans.M2016284.
- [16] G. Kasperovich, J. Haubrich, J. Gussone, G. Requena, Correlation between porosity and processing parameters in TiAl6V4 produced by selective laser melting, *Mater. Des.* 105 (2016)

160–170. doi:10.1016/j.matdes.2016.05.070.

- [17] R. Li, Y. Shi, Z. Wang, L. Wang, J. Liu, W. Jiang, Densification behavior of gas and water atomized 316L stainless steel powder during selective laser melting, *Appl. Surf. Sci.* 256 (2010) 4350–4356. doi:10.1016/j.apsusc.2010.02.030.
- [18] O. Andreau, I. Koutiri, P. Peyre, J.-D. Penot, N. Saintier, E. Pessard, T. De Terris, C. Dupuy, T. Baudin, Texture control of 316L parts by modulation of the melt pool morphology in selective laser melting, *J. Mater. Process. Technol.* 264 (2019). doi:10.1016/j.jmatprotec.2018.08.049.
- [19] V. Gunenthiram, P. Peyre, M. Schneider, M. Dal, F. Coste, R. Fabbro, Analysis of laser–melt pool–powder bed interaction during the selective laser melting of a stainless steel, *J. Laser Appl.* 29 (2017) 022303. doi:10.2351/1.4983259.
- [20] M. Taheri Andani, R. Dehghani, M.R. Karamooz-Ravari, R. Mirzaeifar, J. Ni, A study on the effect of energy input on spatter particles creation during selective laser melting process, *Addit. Manuf.* 20 (2018) 33–43. doi:10.1016/j.addma.2017.12.009.
- [21] M.J. Matthews, G. Guss, S.A. Khairallah, A.M. Rubenchik, P.J. Depond, W.E. King, Denudation of metal powder layers in laser powder bed fusion processes, *Acta Mater.* 114 (2016) 33–42. doi:10.1016/j.actamat.2016.05.017.
- [22] M. Tang, P. Chris Pistorius, J.L. Beuth, Prediction of lack-of-fusion porosity for powder bed fusion, *Addit. Manuf.* 14 (2017) 39–48. doi:10.1016/j.addma.2016.12.001.
- [23] William M. Steen, Jyotirmoy Mazumder, *Laser Material Processing*, 4th ed., 2010.
- [24] T. Qi, H. Zhu, H. Zhang, J. Yin, L. Ke, X. Zeng, Selective laser melting of Al7050 powder: Melting mode transition and comparison of the characteristics between the keyhole and conduction mode, *Mater. Des.* 135 (2017) 257–266. doi:10.1016/j.matdes.2017.09.014.
- [25] R. Fabbro, Melt pool and keyhole behaviour analysis for deep penetration laser welding, *J. Phys. D. Appl. Phys.* 43 (2010). doi:10.1088/0022-3727/43/44/445501.
- [26] L.L. Parimi, G. Ravi, D. Clark, M.M. Attallah, Microstructural and texture development in direct laser fabricated IN718, *Mater. Charact.* 89 (2014) 102–111. doi:10.1016/j.matchar.2013.12.012.
- [27] A.B. Spierings, G. Levy, Comparison of density of stainless steel 316L parts produced with selective laser melting using different powder grades, *Solid Free. Fabr. Proc.* (2009) 342–353.
- [28] A.B. Spierings, M. Schneider, R. Eggenberger, Comparison of density measurement techniques for additive manufactured metallic parts, *Rapid Prototyp. J.* 17 (2011) 380–386. doi:10.1108/13552541111156504.
- [29] W.W. Wits, S. Carmignato, F. Zanini, T.H.J. Vaneker, Porosity testing methods for the quality assessment of selective laser melted parts, *CIRP Ann. - Manuf. Technol.* (2016). doi:10.1016/j.cirp.2016.04.054.
- [30] P. Wang, X. Tan, C. He, M.L.S. Nai, R. Huang, S.B. Tor, J. Wei, Scanning optical microscopy for porosity quantification of additively manufactured components, *Addit. Manuf.* 21 (2018) 350–358. doi:10.1016/j.addma.2018.03.019.
- [31] ASTM International, Standard Test Method for Density Of Powder Metallurgy (PM) Materials Containing Less Than Two Percent Porosity, *Astm B311 - 13.* (2013).
- [32] W. York-, B. Fw, J. Wiley, N. York, W. York-, A.J. Angstrom, W. Rc, T. Chemical, R. Co, B. Roton, S. Angstrom, L.R.D. Aatcc, T. Chemists, *Encyclopedic Dictionary of Polymers*, *Encycl. Dict. Polym.* (2007) 61. doi:10.1007/978-0-387-30160-0\_698.

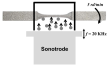
- [33] OIML, International Alcoholometric Tables, (n.d.). <http://2013.oiml.org/publications/R/R022-f75.pdf>.
- [34] M. Zhang, S. Feng, L. Wang, Y. Zheng, Lotus effect in wetting and self-cleaning, *Biotribology*. 5 (2016) 31–43. doi:10.1016/j.biotri.2015.08.002.
- [35] C. Tang, J.L. Tan, C.H. Wong, A numerical investigation on the physical mechanisms of single track defects in selective laser melting, *Int. J. Heat Mass Transf.* 126 (2018) 957–968. doi:10.1016/j.ijheatmasstransfer.2018.06.073.
- [36] T. Mukherjee, J.S. Zuback, A. De, T. DebRoy, Printability of alloys for additive manufacturing, *Sci. Rep.* 6 (2016) 1–8. doi:10.1038/srep19717.
- [37] A. Klassen, V.E. Forster, V. Juechter, C. Körner, Numerical simulation of multi-component evaporation during selective electron beam melting of TiAl, *J. Mater. Process. Technol.* 247 (2017) 280–288. doi:10.1016/j.jmatprotec.2017.04.016.
- [38] Stereology Terms | Stereology Information Center, (n.d.). <http://www.stereology.info/glossary-terms/> (accessed March 27, 2019).
- [39] F.M. and O. Mayhew L. M. C., Caveat on the use of the Delesse principle of areal analysis forestimating component volume densities. *Journal of Microscopy*, 102(2): 195-207., 102 (1974).
- [40] G.F. Vander Voort, Metallographic Techniques for Tool Steels, *ASM Handbook*, Vol. 9 Metallogr. Microstruct. 9 (2004) 644–669. doi:10.1361/asmhba0003766.
- [41] M. Tang, P.C. Pistorius, Oxides, porosity and fatigue performance of AlSi10Mg parts produced by selective laser melting, *Int. J. Fatigue*. 94 (2017) 192–201. doi:10.1016/j.ijfatigue.2016.06.002.



**BEFORE**



**Ultrasonic Shot Peening (USP)**



**AFTER**

