



HAL
open science

X-ray radiography of viscous resuspension

Brice Saint-Michel, Sébastien Manneville, Steven Meeker, Guillaume Ovarlez,
Hugues Bodiguel

► **To cite this version:**

Brice Saint-Michel, Sébastien Manneville, Steven Meeker, Guillaume Ovarlez, Hugues Bodiguel. X-ray radiography of viscous resuspension. *Physics of Fluids*, 2019, 31 (10), pp.103301. 10.1063/1.5103271 . hal-02401025

HAL Id: hal-02401025

<https://hal.science/hal-02401025>

Submitted on 9 Nov 2020

HAL is a multi-disciplinary open access archive for the deposit and dissemination of scientific research documents, whether they are published or not. The documents may come from teaching and research institutions in France or abroad, or from public or private research centers.

L'archive ouverte pluridisciplinaire **HAL**, est destinée au dépôt et à la diffusion de documents scientifiques de niveau recherche, publiés ou non, émanant des établissements d'enseignement et de recherche français ou étrangers, des laboratoires publics ou privés.

X-ray radiography of viscous resuspension

Brice Saint-Michel,^{1,2} Sébastien Manneville,² Steven Meeker,³ Guillaume Ovarlez,³ and Hugues Bodiguel⁴

¹⁾*Department of Chemical Engineering, Imperial College London, London SW7 2AZ, United Kingdom*

²⁾*Univ Lyon, Ens de Lyon, Univ Claude Bernard, CNRS, Laboratoire de Physique, F-69342 Lyon, France^{a)}*

³⁾*Univ. Bordeaux, CNRS, Solvay, LOF, UMR 5258, F-33608 Pessac, France*

⁴⁾*Univ. Grenoble Alpes, CNRS, Grenoble-INP, Laboratoire Rhéologie et Procédés, UMR 5520, F-38041 Grenoble, France*

(Dated: 27 August 2019)

We use X-ray imaging to study viscous resuspension. In a Taylor-Couette geometry, we shear an initially settled layer of spherical glass particles immersed in a Newtonian fluid and measure the local volume fraction profiles. In this configuration, the steady-state profiles are simply related to the normal viscosity defined in the framework of the Suspension Balance Model (SBM). These experiments allow us to examine this fundamental quantity over a wide range of volume fractions, in particular in the semi-dilute regime where experimental data are sorely lacking. Our measurements strongly suggest that the particle stress is quadratic with respect to the volume fraction in the dilute limit. Strikingly, they also reveal a nonlinear dependence on the Shields number, in contrast with previous theoretical and experimental results. This likely points to shear-thinning particle stresses and to a non-Coulomb or velocity-weakening friction between the particles, as also evidenced from shear reversal experiments.

I. INTRODUCTION

Understanding the flow of particles suspended in a fluid is critical to obtaining reliable predictions and models of transport and migration phenomena in industrial and natural slurries. This problem has attracted significant attention over the last two centuries, starting from the seminal works of Stokes¹ and Einstein² who studied how a single particle affects the flow of a viscous fluid at low Reynolds number. Due to the large number of particles in the fluid and to the presence of both solid contacts and long-range hydrodynamic interactions between them, addressing the full problem of suspension flows remains a complex challenge even after almost a hundred years of theoretical and experimental effort. The last two decades have seen the emergence of the suspension balance model (SBM)^{3,4} as a robust framework to describe migration phenomena in suspensions, despite some conceptual flaws that were settled recently^{5,6}. Notable progress has also been made to reconcile this theoretical framework for dense suspensions with those for granular rheology⁷.

The SBM introduces the concept of particle stress to explain particle migration in flowing suspensions. It accounts for the fact that particle contacts tend to generate normal stresses that act as an osmotic pressure to keep the particles dispersed under shear. The normal viscosity tensor η_n quantifies this particle stress in a dimensionless form as a function of the volume fraction ϕ . In the presence of stress inhomogeneities, particle migration occurs leading to volume fraction gradients that ensure the balance of particle normal stresses in steady-state conditions.

The SBM then relies on empirical expressions of the shear and normal viscosities of dense suspensions derived from experiments performed under homogeneous conditions, such as those provided by Morris and Boulay⁴ and Boyer, Guazzelli,

and Pouliquen^{7,8}, to derive the particle migration dynamics and the steady-state concentration profiles in any flow geometry⁴. In all these works, a viscous scaling of all stresses is assumed, which is theoretically justified for ideal rate-independent Coulomb friction between the particles⁹. Many experimental results, however, show the emergence of a shear-thinning viscosity at high volume fraction in non-Brownian suspensions¹⁰⁻¹⁴. This has been proposed to originate from a velocity-weakening friction between the particles¹³ or from non-Coulomb friction^{12,14} as evidenced experimentally by Chatté *et al.*¹². These nonlinear properties would then largely depend on both the bulk and surface properties of the particles considered.

Moreover, some aspects of the SBM remain unclear. For instance, the anisotropy in the particle pressure is modelled through the use of three different coefficients for the normal viscosity, $\eta_{n,i=1,2,3}$ acting respectively in the direction of flow, in the flow gradient direction and in the vorticity direction, perpendicular to both flow and flow gradient directions. Morris and Boulay⁴ assume that these coefficients are proportional to each other for all ϕ . However, recent experimental evidence by Dbouk, Lobry, and Lemaire¹¹, who measured the particle pressure simultaneously in two directions, have shown otherwise. Confirming such results is particularly challenging because very few experimental configurations probe the particle pressure in the vorticity direction. Such measurements indeed require a parallel-plate geometry^{11,15} or a tilted trough¹⁶. The typical particle pressures in these geometries are usually too small to be measured accurately for $\phi \leq 0.2$, which means that the asymptotic limits proposed by Morris and Boulay⁴ have yet to be confirmed. Additional measurements of the normal viscosity in the vorticity direction would allow one to confirm such predictions or to correct them and improve our understanding of particle migration and transport in dilute and semi-dilute suspensions.

Viscous resuspension^{17,18}, where an initially settled suspension is made to flow until a steady state is reached, is an interesting alternative to measure directly the normal viscosity

^{a)}Electronic mail: b.saint-michel@imperial.ac.uk

coefficients. Indeed, under a homogeneous and steady shear flow, particle pressure gradients originating from the initial particle concentration inhomogeneity induce a vertical positive particle flux—that is, particles are resuspended—which is balanced in steady state by the negative buoyancy of the particles. Resuspension experiments have been performed in various geometries including the annulus geometry¹⁷ and the Taylor-Couette geometry¹⁸. Due to technical limitations, these two previous works only report measurements of the maximum height of the sediment h above which the particle volume fraction is identically zero. This height increases when raising the shear rate $\dot{\gamma}$, as expected from the balance between viscous forces and buoyancy. More specifically, in the context of viscous resuspension in a Taylor-Couette geometry, the increment $h - h_0$ of an initially settled bed can be related to the normal viscosity in the vorticity direction. Interestingly, the data of Acrivos *et al.*, analysed in the framework of the suspension balance model by Zarraga, Hill, and Leighton Jr.¹⁰, suggest an alternative dependence of the normal viscosity with ϕ compared to pressure-imposed experiments^{4,7}. In particular, for vanishing volume fractions ϕ , this alternative expression converges faster to zero than the ones proposed by Morris and Boulay⁴ and by Boyer *et al.* (see Section IV A for more details).

The height of the sediment in resuspension experiments is an integral response, and as such it includes both the dilute particle layers close to the top of the sediment and the more concentrated parts at the bottom. However, in the steady state, a mechanical balance links the vertical concentration profile to the normal viscosity everywhere in the sediment, or, in other words, at every concentration from the very dilute regime to the highly concentrated regime. Therefore, concentration profiles in Taylor-Couette resuspension experiments could be used to estimate the normal viscosity for a wide range of volume fractions, including the very dilute limit. This would be particularly helpful to reconcile the point of view of Zarraga *et al.* and that of Morris and Boulay⁴ and Boyer *et al.* on the expression of the normal viscosity.

The objective of the present work is to achieve the measurement of volume fraction profiles $\phi(z)$ during viscous resuspension in a Taylor-Couette geometry and to use this information to determine the normal viscosity. For this purpose we take advantage of X-ray imaging, since X-ray absorbance is directly related to the particle volume fraction without being affected by multiple scattering^{12,19,20}. This technique allows a precise and local measurement of the particle volume fraction. The paper is organized as follows. Section II gives a detailed description of the experimental setup and the derivation of the concentration profiles from the raw X-ray radiography intensity maps. Section III discusses our experimental concentration maps and the conditions under which vertical concentration profiles can be extracted. The profiles are then compared to the predictions of the SBM using the two empirical formula for the normal viscosity^{7,10} in Section IV. Finally, Section V offers an interpretation of our results in the framework of solid friction weakening and shear-thinning.

II. EXPERIMENTAL SETUP AND METHODS

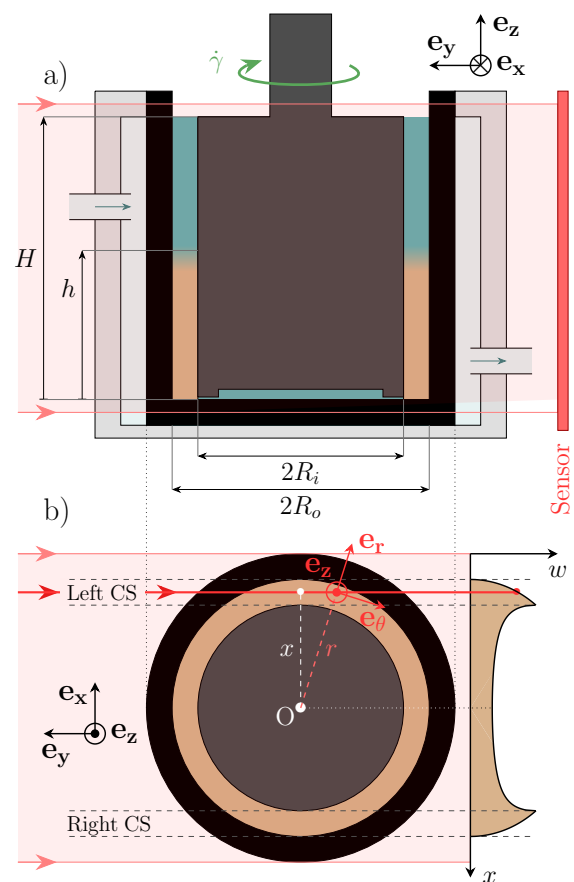


FIG. 1. Schematic diagram of the experimental setup. a) Side view: the suspension, with fluid in blue and particles in orange, is sheared between the two concentric cylinders of a Taylor-Couette cell. X-rays generated from a pointlike source 25 cm from the geometry (left of the picture, not shown) are selectively absorbed by the suspension before hitting the planar X-ray sensor, located 70 cm away from the cell. The sample temperature is controlled thanks to a water circulation around the outer cylinder of the cell. b) Top view: the thickness w of the suspension slab crossed by the X-rays depends on the transverse coordinate x . A plot of w as a function of x is shown on the right. The two cross-sections (left and right CS) used in our study are indicated with dashed lines. A typical X-ray for a given x of the left CS (thick red line) crosses areas of the geometry corresponding to multiple values of $r \geq x$.

A. Geometry, Fluid and Particles

A schematic diagram of our experimental setup is shown in Figure 1. It consists of a Taylor-Couette cell made of an inner cylindrical spindle of radius $R_i = 23.0$ mm and height $H = 53.5$ mm and of an outer cup of radius $R_o = 25.0$ mm. The choice of this thin-gap Couette geometry is prescribed by the need to avoid significant shear-induced migration while accommodating at least ~ 8 particles across the gap. Both

cylinders are made of poly(methyl-methacrylate) (PMMA) and are smooth compared to the particle typical size. The spindle is recessed over 1.5 mm at its end in order to limit secondary flows at the bottom of the geometry. Water is circulated around the cup to control the temperature to $25 \pm 1^\circ\text{C}$.

We focus on glass spheres of density $\rho_p = 2500 \text{ kg}\cdot\text{m}^{-3}$. The batch particles (purchased from Wheelabrator) were sieved leading to a diameter range $250 < 2a < 315 \text{ }\mu\text{m}$. We suspend these particles in a mixture of water at 65% wt. and UCON (Dow Chemical, 75-H-90,000) at 35% wt. The suspending fluid mixture is Newtonian with a viscosity $\eta_0 \simeq 0.23 \text{ Pa}\cdot\text{s}$ and a density $\rho_f \simeq 1.03 \times 10^3 \text{ kg}\cdot\text{m}^{-3}$. The total particle mass $M = 4.00 \text{ g}$ was weighed using a precision scale before inserting them in the geometry and the global particle volume fraction is $\phi = 10\%$.

Assessing the shear viscosity of such suspensions is difficult: strong sedimentation effects result in a suspension that is non-homogeneous in the vertical direction. We can however evaluate this viscosity by conducting additional experiments with suspensions composed of the same particles suspended in a similar but much more viscous fluid phase (20% wt. water, 80% wt. UCON), for which homogeneous steady states under shear are *a priori* reached. These additional results are shown in Appendix A. They evidence that the shear viscosity follows a standard Maron-Pierce like evolution with volume fraction, which seems to diverge at $\phi_m \simeq 0.6$, in addition to weak shear-thinning at the highest concentrations. We will thus consider that the SBM is *a priori* an appropriate framework to describe these suspensions rheology.

In the resuspension experiments, the spindle is driven by a stress-imposed rheometer (AR G2, TA Instruments). The vertical position of the spindle is set as the lowest position that allows free rotation, usually around 50-100 μm from the cup bottom, in order to prevent particles from getting below the spindle. We use the rheometer feedback loop on the imposed stress to apply a constant shear rate $\dot{\gamma} = 1000, 500, 250, 100, 50, 25$ and 0 s^{-1} in successive steps of 5 min duration each.

B. X-ray Radiography

The whole rheometer and the Taylor-Couette cell are inserted in a high-resolution X-ray apparatus (Phoenix v|tome|x s, GE) set to work in two-dimensional mode with a pointlike source (see Figures 1a, 11 and 12) fitted with a copper plate to improve source monochromaticity and limit beam-hardening effects²¹. The experimental X-ray intensity map $I_\phi(x, z)$ transmitted through the Taylor-Couette cell is recorded by a planar sensor. This intensity depends on the absorbance of all the parts of the setup, including the PMMA cup and spindle, the suspending fluid and the particles. To isolate the particle contribution, we first acquire a reference intensity map $I_0(x, z)$ obtained with a geometry filled with the pure suspending fluid. The specific absorbance $A(x, z)$ solely due to the presence of particles throughout the geometry is then defined as:

$$A(x, z) = -\log_{10} \frac{I_\phi(x, z)}{I_0(x, z)}. \quad (1)$$

In a homogeneous medium, the absorbance A can be directly related to the global volume fraction ϕ through the Beer-Lambert law:

$$A = (\varepsilon_p - \varepsilon_f)w\phi, \quad (2)$$

where ε_f and ε_p are the specific extinction coefficients of the fluid and the particles, and w is the thickness of the suspension slab crossed by the X-rays. In our experiments, the cross-section w depends on the transverse coordinate x (see Figure 1b) and the particle volume fraction ϕ depends on both r and z . The latter point implies that the absorbance $A(x, z)$ is a weighted average of ϕ over r , the radial distance to the rotation axis. A rigorous determination of the local particle volume fraction $\phi(r, z)$ requires the expression of Equation (2) in an integral form and the application of an inverse Abel transform as detailed by Gholami *et al.*²⁰. Here, for the sake of simplicity, we shall focus on the two regions corresponding to $R_i \leq |x| \leq R_o$ that we refer to as the left and right cross-sections (CS) as depicted in Figure 1b. We denote their local cross-sectional widths as $w(x)$. As discussed below, the particles are essentially homogeneously distributed in the horizontal plane under shear. Hence, we express $\phi(r, z)$ as the ratio $A(x, z)/[w(x)(\varepsilon_p - \varepsilon_f)]$, identifying x with r and ignoring the weighted average.

Additional parallax issues also induce a smoothing of the actual concentration maps on a typical scale $\ell \approx 8a$ along the vertical direction. The reader is referred to Appendices B and E for more details about the approximations used in data analysis and about calibration issues.

III. RESULTS

A. General Observations

To the best of our knowledge, the concentration maps $\phi(r, z)$ shown in Figure 2 are the first measurements of this kind for resuspension experiments. We first notice that the particles show some vertical layering at the outer wall of the Taylor-Couette geometry. This phenomenon is particularly pronounced for the lowest shear rates where the local concentration $\phi(r, z)$ may exceed random close packing. In the particular case of the sediment at rest, it even reaches $\phi = 0.74$, indicating that particles form a hexagonal packing close to the outer wall (see leftmost panel in Figure 2). We cannot conclude on the presence of layering at the inner wall: since our determination of ϕ close to the rotating spindle involves a weighted average on all $R_o \leq r \leq R_i$, layering may be hidden by the volume fraction in the bulk.

In the vertical direction, starting from the top of the cup, the sediment at rest shows a rather sharp transition from $\phi = 0$ to its maximal value over the size of the typical smoothing ℓ resulting from the finite distance between the X-ray source and the geometry. The sediment at rest is homogeneous along z with an average volume fraction over the entire gap of 0.55, in fair agreement with the existing literature on non-attractive spheres settling very slowly^{22–25}. In particular, this

This is the author's peer reviewed, accepted manuscript. However, the online version of record will be different from this version once it has been copyedited and typeset.

PLEASE CITE THIS ARTICLE AS DOI:10.1063/1.5103271

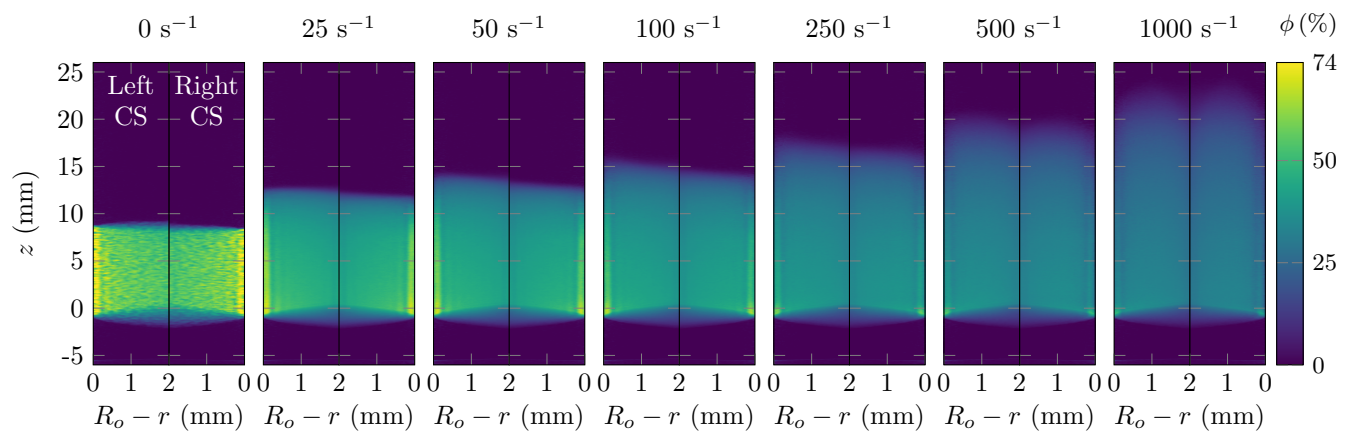


FIG. 2. Local volume fraction $\phi(r, z)$ obtained by averaging X-ray images over the last 60 s of each shear rate step. The two regions of interest (left and right CS) are shown for the seven shear rates under study. Image blurring due to parallax issues is visible at the bottom of the geometry (see Appendix B).

volume fraction is clearly lower than random close packing ($\phi = 0.636$) and than the critical volume fraction where the shear viscosity of monodisperse frictional sphere suspensions diverges (usually $0.58 \leq \phi \leq 0.62$, 0.6 in our case)^{7,8,26,27}.

For increasing shear rates, Figure 2 shows the resuspension process in action: the top of the sediment rises as $\dot{\gamma}$ increases. In order to conserve the number of particles, the volume fraction in the bulk of the sediment decreases. In contrast with the sediment at rest, a finite vertical gradient in volume fraction develops throughout the sediment, including at the top of the sediment where $\phi \rightarrow 0$. Once again, the averaging process we use to derive concentration maps cannot completely rule out particle migration towards the outer edge: our measurements only confirm that strong migration does not occur for shear rates below or equal to 250 s^{-1} , for which the particle volume fraction looks quite homogeneous in the horizontal direction except where layering is present. For the two highest shear rates, we notice that the top of the profiles is rounded and symmetric with respect to the gap center. This observation is at odds of what one would expect, since both particle stress gradients and inertial effects tend to push the particles outwards. Inertial effects should actually be the dominant effect since their amplitude relative to gravity, $\dot{\gamma}^2 e^2 / g R_1$ are respectively 5 and 19 for $\dot{\gamma} = 500$ and 1000 s^{-1} . In addition, experiments have reported²⁸ that particle migration induce suspension density gradients which trigger currents called natural convection currents. They may further alter the concentration profiles; in such a case a fully two-dimensional study of the resuspension process is necessary to understand the shape of the experimental profiles. Knowing this, we have then performed numerical simulations to evaluate the amount of distortion ascribed to inertial migration. We show in Appendix C that these effects can be neglected up to $\dot{\gamma} = 250 \text{ s}^{-1}$. We will then systematically exclude data at $\dot{\gamma} = 500$ and 1000 s^{-1} from our analysis, yet we will display their apparent profiles in Figure 7 to highlight their misleading nature, which could lead one to believe they are actually valid.

Finally, it can be noted that the concentration maps in the

left and right cross-sections differ slightly from each other. Measurements of the resuspended sediment height highlight the relative differences, ranging from 1 to 9% depending on the applied shear rate. These differences could stem from a slight misalignment of our geometry: our measurements show a 3%—two pixels in our images— difference in size between the two cross-sections. They did not show any significant angular misalignment between the spindle and the cup rotation axes. Any potential misalignment does not prevent steady states to be reached, as can be seen in Figure 15 in Appendix D. In the following, we focus on one-dimensional profiles of the local volume fraction that we compare to predictions of the SBM based on the various expressions proposed in the literature for the normal viscosity.

B. Concentration Profiles Along the Vertical Direction

In order to extract one-dimensional concentration profiles from the two-dimensional maps of Figure 2, we perform local averages of $\phi(r, z)$ over various vertical slices across the gap of the Taylor-Couette cell and compute $\phi(r_0, z) = \langle \phi(r, z) \rangle_{r_0 - \Delta r < r \leq r_0 + \Delta r}$, where r_0 and $\Delta r = (R_o - R_i)/14 \simeq 0.14 \text{ mm}$ respectively denote the centre position and the width of each slice. As shown in Figure 3 for the step at $\dot{\gamma} = 100 \text{ s}^{-1}$, the outermost and the innermost profiles significantly differ from the other profiles, confirming that layering is present at the walls and that particle migration in the bulk is limited. These profiles also confirm that, under shear, the particle volume fraction continuously increases from the clear fluid down to the bottom of the sediment rather than reaching a constant value in the bulk of the sediment.

Defining concentration profiles $\phi(r_0, z)$ requires a common reference point $z = 0$ for the bottom of the sediment. The parallax issues described in Appendix B imply that the volume fraction smoothly decreases to zero at the bottom of the sediment (see Figure 3b) so that we cannot trivially choose $z = 0$ as the bottom location at which ϕ vanishes. Since they are

more prominent close to the inner cylinder, we define $z = 0$ as the location of the maximum volume fraction of the second outermost volume fraction profile. We finally define the height of the resuspended sediment, named h , as the maximum vertical position z at which the particle volume fraction exceeds the noise level of our measurements, estimated to be around 0.45% (see Figure 3c). We also remark that $\phi(r_0, z)$ reaches zero with an oblique asymptote at $z = h$ i.e. $\phi(r_0, z)$ scales roughly as $(h - z)$ at the top of the sediment.

In the following, we choose to work with the central slice $\phi(r_0 = 24 \text{ mm}, z)$, hereafter noted $\phi(z)$ for simplicity, as representative of the particle vertical distribution (see purple profile in Figure 3). Plotting this quantity with the origin shifted to the top of the sediment shows that $\phi(z)$ follows the same trend for both cross-sections (see Figure 4). This means that particles at the top are insensitive to the particle volume fraction in the bulk of the resuspended sediment and at the bottom of the cup. This justifies the use of a local theory such as the SBM to model resuspension processes. It also means that we may focus our study on the left cross-section only without any loss of generality.

IV. COMPARISON WITH RESUSPENSION MODELS

A. Theoretical Framework

Though initially modelled in the framework of a diffusive model^{17,18}, viscous resuspension may also be described using the SBM^{8,10}. The advantages of this second approach lie in that (i) the model is fully tensorial and (ii) the same phenomenological expressions can be used to account for particle migration, for normal forces and for particle pressure measurements. Though the latter argument is not strictly valid^{5,6}, it has been argued that the theoretical refinements detailed in Lhuillier⁵ and Nott, Guazzelli, and Pouliquen⁶ might be neglected provided that contact forces dominate the particle stress, as should be the case at sufficiently high volume fraction⁶. We therefore choose to discuss the present experimental data in the framework of the SBM.

In the following Section, we derive one-dimensional concentration profiles using the SBM, and we neglect the radial centrifugal force acting on the particles. We remind the reader that we also computed numerically the two-dimensional concentration maps including migration effects in Appendix C, which led us to conclude that inertial migration is small up to –and including– 250 s^{-1} .

The steady-state concentration profile results from the momentum balance in the particle phase, which reads⁴:

$$\phi \Delta \rho \mathbf{g} + \nabla \cdot \Sigma_p = 0, \quad (3)$$

where Σ_p is the particle stress tensor. We suppose this tensor only depends on z and assume it is diagonal^{4,8}, with components $\Sigma_{p,ii} = -\eta_0 |\dot{\gamma}| \eta_{n,i}(\phi)$ where $i = 1, 2$ and 3 . Defining the global Shields number:

$$\text{Sh} = \frac{\eta_0 \dot{\gamma}}{\Delta \rho g a}, \quad (4)$$

which is a constant control parameter for a given shear rate, we may recast Equation (3) in dimensionless form. Assuming that the normal viscosity coefficient $\eta_{n,3}$ is a function of ϕ only, we write:

$$\frac{\phi}{\text{Sh}} = -\frac{d\eta_{n,3}}{d\phi} \frac{d\phi}{d\hat{z}}, \quad (5)$$

where $\hat{z} = z/a$. Other lengths will be normalized in a similar fashion in the following sections.

Equation (5) is formally analogous to the one obtained using the diffusive model of Acrivos, Mauri, and Fan¹⁸. By identification, we can relate the normal viscosity $\eta_{n,3}$ to the dimensionless shear-induced diffusivity \hat{D} of the diffusive model, $d\eta_{n,3}/d\phi = 9\hat{D}/2f(\phi)$, where $f(\phi)$ is the hindrance function accounting for the presence of other particles.

Equation (5) can be solved together with an equation for mass conservation to compute the total height \hat{h} of the resuspended sediment and the volume fraction profile, provided one assumes an expression for $\eta_{n,3}(\phi)$. Several tentative empirical expressions for this quantity –also called correlations in the literature^{8,18}– have been proposed, which generally assume the following form:

$$\eta_{n,3}(\phi) = \lambda \left(\frac{\phi/\phi_m}{1 - \phi/\phi_m} \right)^n, \quad (6)$$

where ϕ_m is the volume fraction at which both shear and normal viscosities diverge. Zarraga, Hill, and Leighton Jr.¹⁰ choose $n = 3$, $\lambda = 0.24$ and $\phi_m = 0.62$ based on previous experimental results of viscous resuspension in a Taylor-Couette geometry¹⁸. Morris and Boulay⁴ obtain $n = 2$, $\lambda = 0.38$ and $\phi_m = 0.68$ combining sets of data from large-gap Taylor-Couette and parallel-plate migration experiments. This scaling is very similar to the one proposed by Boyer, Guazzelli, and Pouliquen^{7,29} who derived $n = 2$, $\lambda = 0.6$ and $\phi_m = 0.585$ from pressure-imposed shear and rotating rod experiments.

The volume fraction profiles can also be computed using the expressions for the normal viscosity proposed by Boyer, Guazzelli, and Pouliquen⁷ and by Zarraga, Hill, and Leighton Jr.¹⁰. Indeed, Equations (5) and (6) allow us to derive $\hat{h} - \hat{z}$ as a function of ϕ :

$$\hat{h} - \hat{z} = \text{Sh} \frac{\lambda}{\phi_m} \frac{\phi(2\phi_m - \phi)}{(\phi_m - \phi)^2} \quad \text{for Boyer } et al., \quad (7)$$

$$\hat{h} - \hat{z} = \text{Sh} \frac{\lambda}{2\phi_m} \frac{\phi^2(3\phi_m - \phi)}{(\phi_m - \phi)^3} \quad \text{for Zarraga } et al. \quad (8)$$

Since these two expressions are strictly monotonic functions of ϕ , we can invert them to generate numerical concentration profiles. In the case of the Boyer *et al.* correlation, inverting Equation (7) analytically results in:

$$\frac{\phi(\hat{z})}{\phi_m} = 1 - \left(1 + \frac{\phi_m}{\lambda \text{Sh}} (\hat{h} - \hat{z}) \right)^{-1/2}. \quad (9)$$

Finally we need to estimate \hat{h} in Equations (8) and (9) in order to superimpose numerical profiles to experimental data.

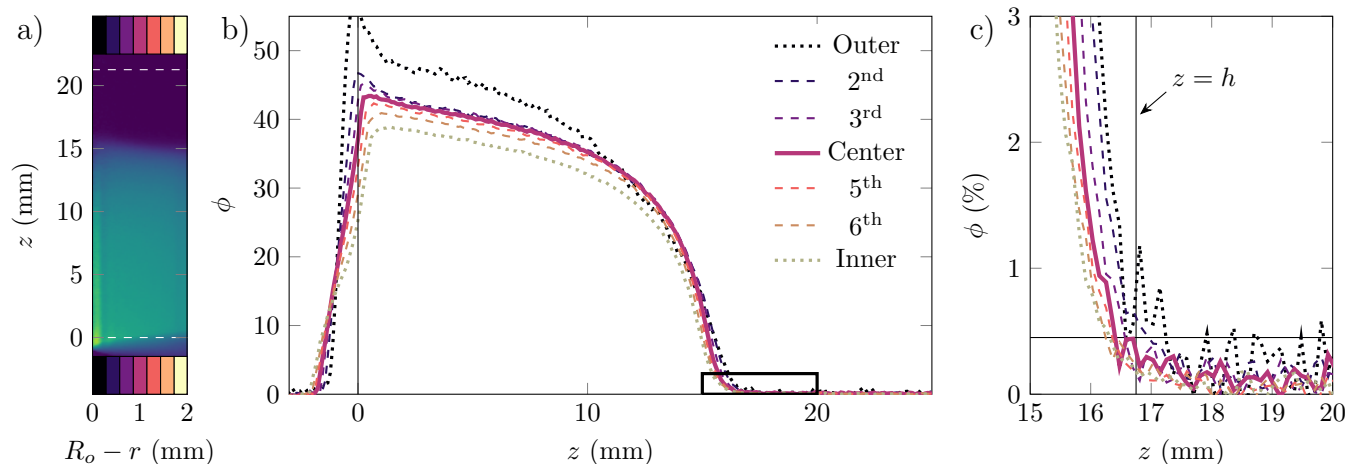


FIG. 3. Computing concentration profiles along the vertical direction in the left cross-section. a) Concentration map $\phi(r, z)$ for $\dot{\gamma} = 100 \text{ s}^{-1}$. The seven slices over which $\phi(r, z)$ is averaged to produce concentration profiles are highlighted with colored rectangles. b) Concentration profiles $\phi(r_0, z)$ resulting from the averaging process. The thick pink line represents the center slice. Surrounding slices are plotted as dashed lines. The first and last slice are plotted as dotted lines. c) Close-up of the top region between 15 and 20 mm. We set the noise level to $\phi = 0.45 \%$ (horizontal black line).

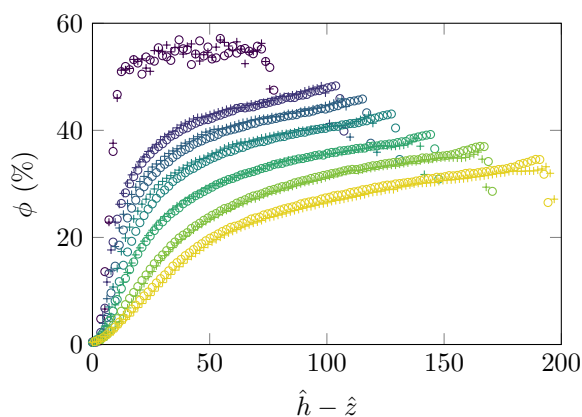


FIG. 4. Concentration profiles ϕ derived from the central zones of each cross-section of the gap. Circles: left CS. Crosses: right CS. Colors code for the imposed shear rate from $\dot{\gamma} = 0 \text{ s}^{-1}$ (dark purple) to $\dot{\gamma} = 1000 \text{ s}^{-1}$ (yellow). Both z and the resuspended sediment height h , as defined in Figure 3c, are normalized by the particle radius a .

To do so, we use particle conservation,

$$\hat{h}_0 \phi_m = \int_0^{\hat{h}} \phi(\hat{z}) d\hat{z}, \quad (10)$$

together with the values of \hat{h}_0 obtained in Appendix E for the left and right cross-sections of the gap. While the resuspended sediment heights following the correlation of Zarraga *et al.* have to be computed numerically, we can derive a closed, explicit formula for \hat{h} from the correlation of Boyer *et al.*:

$$\hat{h}(\text{Sh}) = \hat{h}_0 + 2\sqrt{\frac{\lambda \hat{h}_0}{\phi_m} \text{Sh}}. \quad (11)$$

B. Height of the sediment

We first compare our results to the resuspension heights measured by Acrivos, Mauri, and Fan¹⁸, who did not have access to local particle concentration measurements. We report our experimental results in Figure 5 along with the analytical expression of Equation (11) and two other estimates of $\hat{h}(\text{Sh})$ that are very close to one another: the first is a numerical derivation based on Zarraga, Hill, and Leighton Jr. while the second is the historical asymptotic expression proposed by Acrivos, Mauri, and Fan. Our experimental data lie systematically above the Zarraga *et al.* correlation while also disagreeing with Equation (11). Height measurements indeed offer limited or even ambiguous insight on the processes at play and highlights the critical importance of measuring the bulk concentration profiles in the sediment in order to fully understand viscous resuspension.

C. Direct estimation of the normal viscosity

The volume fraction profiles measured in the previous section allow us to determine directly the normal viscosity. Indeed, integrating Equation (5) from any normalized position \hat{z} along the resuspended sediment height to \hat{h} leads to

$$\eta_{n,3}(\hat{z}) = \frac{1}{\text{Sh}} \int_{\hat{z}}^{\hat{h}} \phi(u) du. \quad (12)$$

Interestingly, a single volume fraction profile provides an estimation of the normal viscosity on a range of ϕ that depends on the Shields number of the experiment. By varying the Shields number, we could not only cover a wide range of volume fractions but also test the robustness of the approach thanks to data redundancy.

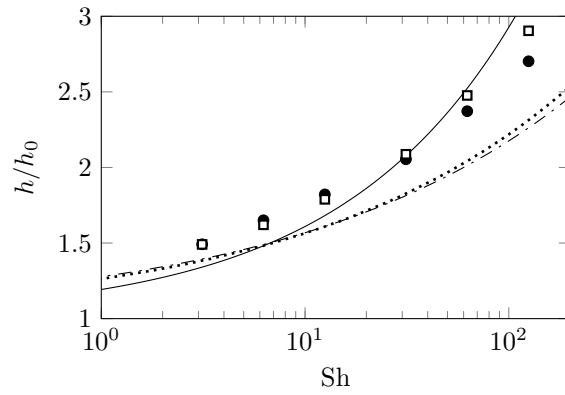


FIG. 5. Variations of the relative resuspended sediment height h/h_0 as a function of the Shields number. Open squares show experimental results for the left CS, and filled circles the right CS. The solid line shows the sediment height from the Boyer *et al.* correlation and given by Equation (11). The dotted line shows the sediment height from the Zarraga *et al.* correlation. The dash-dotted line is the sediment height predicted by Acrivos, Mauri, and Fan¹⁸.

The normal viscosities $\eta_{n,3}(\hat{z})$ inferred from our experimental measurements are shown as a function of $\phi(\hat{z})$ in Figure 6a together with the correlations of Boyer, Guazzelli, and Pouliquen⁷, Morris and Boulay⁴ and Zarraga, Hill, and Leighton Jr.¹⁰ (see section IV A). The maximum volume fraction was set to $\phi_m = 0.6$ for all correlations following the viscosity measurements reported in Appendix A for homogeneous suspensions. Maximum volume fractions are indeed not universal and have to be adjusted depending on the solid friction coefficient between particles²⁷. Rather than collapsing on a master curve independent of the applied shear, the normal viscosity curves $\eta_{n,3}(\phi)$ shift downwards with increasing shear rates. We checked that such a shear rate dependence cannot be ascribed to the uncertainty on the local volume fraction measurements or to a lack of precision on the determination of $\hat{z} = 0$ and $\hat{z} = \hat{h}$; it is also unlikely that potential wall slip or confinement effects both in the vertical and the lateral directions are responsible for this progressive shift (see Appendix F for more details). Moreover, none of these curves match any of the three correlations presented above in Section IV A. This result is quite intriguing since all shear rate dependence should be taken into account by the Shields number in Equations (5) and (12) for hard, spherical particles with a constant friction coefficient.

Figure 6b further shows that, when rescaled by a factor $0.65 \text{Sh}^{0.29}$, all normal viscosity profiles follow a universal shape for $\phi \geq 0.2$. Significant discrepancies are observed at low volume fractions, which can be attributed to vertical parallax issues, described in more detail in Appendix B. They induce a smoothing of the experimental concentration profiles over a typical length ℓ , of the order of a few particle radii for the four shear rates under study. Smoothing effects will artificially push the top of the sediment \hat{h} upwards, and eventually, through Equation 12, impact in turn our estimate of the normal viscosity $\eta_{n,3}$. In the end, this effect leads to a systematic overestimation of the normal viscosity for low volume

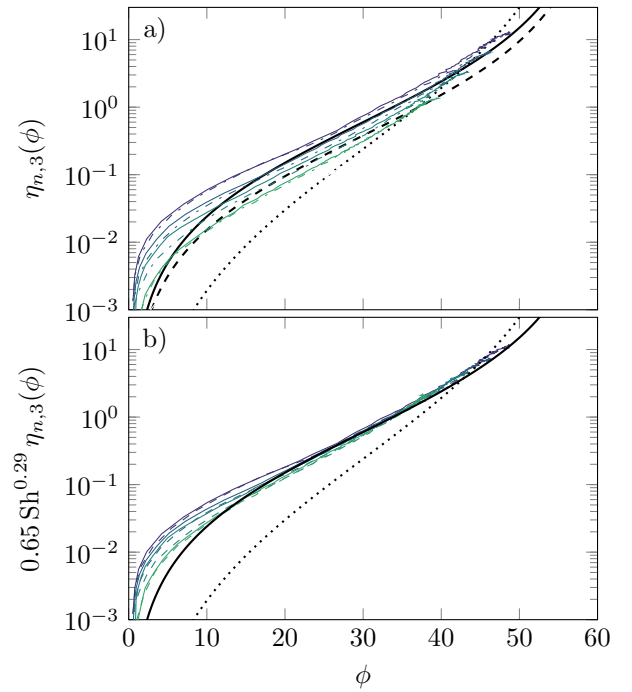


FIG. 6. a) Normal viscosity $\eta_{n,3}$ as a function of volume fraction ϕ for shear rates ranging from $\dot{\gamma} = 25 \text{ s}^{-1}$ (purple) to $\dot{\gamma} = 250 \text{ s}^{-1}$ (green) for the left (thin solid lines) and right (thin dash-dotted lines) cross-sections. $\eta_{n,3}$ is obtained from the experimental volume fraction profiles using Equation (12). The black solid line shows the normal viscosity correlation proposed by Boyer, Guazzelli, and Pouliquen⁷, the dashed line corresponds to the one proposed by Morris and Boulay⁴ and the dotted line to the Zarraga, Hill, and Leighton Jr.¹⁰ correlation. b) Same data where the normal viscosity has been rescaled by a factor $0.65 \text{Sh}^{0.31}$; the data coincide with the Morris and Boulay correlation by changing the prefactor to 0.41.

fractions, and should be maximal for the lowest shear rate, $\dot{\gamma} = 25 \text{ s}^{-1}$, since its volume fraction gradients are steeper. This is precisely what we observe in Figure 6. Additional experiments shown in Appendix G and performed with a smaller amount of the same particles support the same scaling for $\phi \geq 30\%$. Interestingly, while the correlation proposed by Zarraga *et al.* can be clearly ruled out, the normal viscosity correlations of Boyer *et al.* and Morris and Boulay now yield accurate descriptions of the experimental data in this new set of axes, down to volume fractions of about 0.1 for the largest shear rates, whose profiles are least sensitive to parallax issues. Such a shift amounts to using an effective Shields number in Equation (12) given by $\text{Sh}_{\text{eff}} = 1.54 \text{Sh}^{0.71}$ to match the prediction of Boyer *et al.*, or $2.43 \text{Sh}^{0.71}$ to match that of Morris and Boulay. This reflects the fact that the normal viscosity grows –unexpectedly– slower than $\dot{\gamma}$, or, equivalently, that resuspension becomes less and less efficient as the shear rate increases.

D. Comparison with theoretical concentration profiles

Figure 7a-b and 7c-d respectively show the numerical profiles of the volume fraction $\phi(z)$ computed from the Zarraga *et al.* and the Boyer *et al.* normal viscosity correlations without any free parameters. The Zarraga *et al.* correlation describes the sediment height \hat{h} somewhat correctly for the three lower shear rates and underestimates it for $\dot{\gamma} > 100 \text{ s}^{-1}$, as suggested in Figure 5. More importantly, it fails to fit the data at low volume fractions, i.e. close to $\hat{z} = \hat{h}$, where the numerical profiles display a vertical tangent whereas the experimental data show a finite slope. In contrast, the Boyer *et al.* correlation correctly fits the data at $\dot{\gamma} = 50 \text{ s}^{-1}$ for almost all z but grossly overestimates the sediment height at larger shear rates.

A much better agreement is obtained if we take the Shields number as a free parameter in Equation (9). The numerical profiles resulting from this procedure are displayed in Figure 7e-f and coincide very well with the experimental data for all shear rates and particle volume fractions. Figure 7g shows the variation of the effective Shields number deduced from the fitting procedure as a function of the global Shields number Sh . Therefore, using the Boyer *et al.* correlation with an effective Shields number $Sh_{\text{eff}} = 1.52 Sh^{0.70}$ provides an excellent description of our data, consistently with Section IV C and, as will be discussed in the next Section, with nonlinear particle stresses as in Equation (13).

V. DISCUSSION

The volume fraction profiles obtained for a significant range of shear rates provide a strong test of the constitutive behavior of suspensions. From our observations, and after ruling out parallax issues, wall slip, confinement effects and inertial particle migration, it appears that the SBM with the standard viscous scaling of all stresses is not able to describe our system. Instead, the particle stresses seem to obey the following scaling:

$$\Sigma_p \propto \left(\frac{\phi/\phi_m}{1 - \phi/\phi_m} \right)^2 \dot{\gamma}^{0.7}. \quad (13)$$

Let us discuss separately the dependence of the particle stress Σ_p with respect to the volume fraction and to the shear rate. Although coupling between these two variables cannot be excluded in the general case, this separation of variables is the simplest expression that fits the data. It is also natural in our thin-gap Taylor-Couette geometry, as the shear rate is homogeneous. Furthermore, such an approach has been systematically used in the framework of the SBM. This result is quite general: provided that the suspension formulation is the same, we expect Equation (13) to hold for every geometry probing the vorticity component of Σ_p .

A. Effect of volume fraction

As recalled in section IV A, two main correlations for the normal viscosity $\eta_{n,3}(\phi)$ have been proposed in the literature.

The main difference between the correlation of Zarraga *et al.* and that of Morris and Boulay⁴ or Boyer *et al.* is the value of the exponent n in Equation (6), which sets both the asymptotic behavior at low volume fraction $\eta_{n,3} \sim \phi^n$ and the one close to jamming. The fits to the concentration profiles of Figure 7 and the direct normal viscosity determination of Figure 6 lead to the same conclusion: the $n = 2$ correlation of Boyer, Guazzelli, and Pouliquen⁷ matches our results much better than the $n = 3$ equation proposed by Zarraga, Hill, and Leighton Jr.¹⁰. In particular, close to the top of the sediment, the oblique asymptotes of the $\phi(z)$ profiles highlight the $n = 2$ scaling of the normal viscosity at low ϕ , which was proposed –yet never measured– by Morris and Boulay and by Boyer *et al.*

Strikingly, the $n = 3$ scaling was deduced in Ref. 10 from viscous resuspension experiments in a Taylor-Couette geometry, in which Acrivos, Mauri, and Fan¹⁸ measured the resuspended sediment height. However, as shown in Figure 5 and contrary to the volume fraction profiles, this height provides limited insight into the asymptotic behavior of the normal viscosity at low ϕ , which might allow an $n = 3$ scaling to fit the data.

From a physical point of view, the ϕ^2 scaling at low volume fractions points to pairwise interactions, contrary to a ϕ^3 scaling which would rather hint at three-body hydrodynamic interactions as considered in Ref. 30. As pointed out by Lhuillier⁵, both non-hydrodynamic and hydrodynamic forces could in principle lead to shear-induced migration. It has been argued that the effect of non-hydrodynamic forces such as contact forces between particles is likely to dominate at high volume fraction⁶. Our finding that $\Sigma_p \propto \phi^2$ at low ϕ thus indicates that the shear-induced migration evidenced in resuspension experiments originates –at least for the system studied here– from non-hydrodynamic interactions, even at low volume fractions, where the shear viscosity is dominated by viscous stress. As will be shown in the following, these non-hydrodynamic interactions are likely to be contact forces.

B. Effect of shear-rate: nonlinear particle stress

The nonlinear power-law scaling of the particles stresses $\Sigma_p \propto \dot{\gamma}^{0.7}$ [Equation (13)] is not expected for a viscous suspension when interparticle contact forces are modeled by an ideal Coulomb friction law⁹. Many experimental results, however, show departures from the simple viscous scaling $\Sigma_p \propto \dot{\gamma}$ through a shear-thinning viscosity at high volume fraction in non-Brownian suspensions^{10–14}. For our suspension, we find in Appendix A that $\eta \propto \dot{\gamma}^{-0.17}$ for the largest volume fractions. Recently, several authors have introduced non-Coulomb friction laws to explain such shear thinning, either by adding an explicit velocity dependence¹³ or a normal stress dependence^{12,14} to the microscopic sliding friction coefficient between particles.

Still, the shear viscosity cannot be correlated directly to the particle stress that we extract from the shear-induced resuspension experiment. Indeed, the shear viscosity of the suspension finds its contribution from both hydrodynamic and

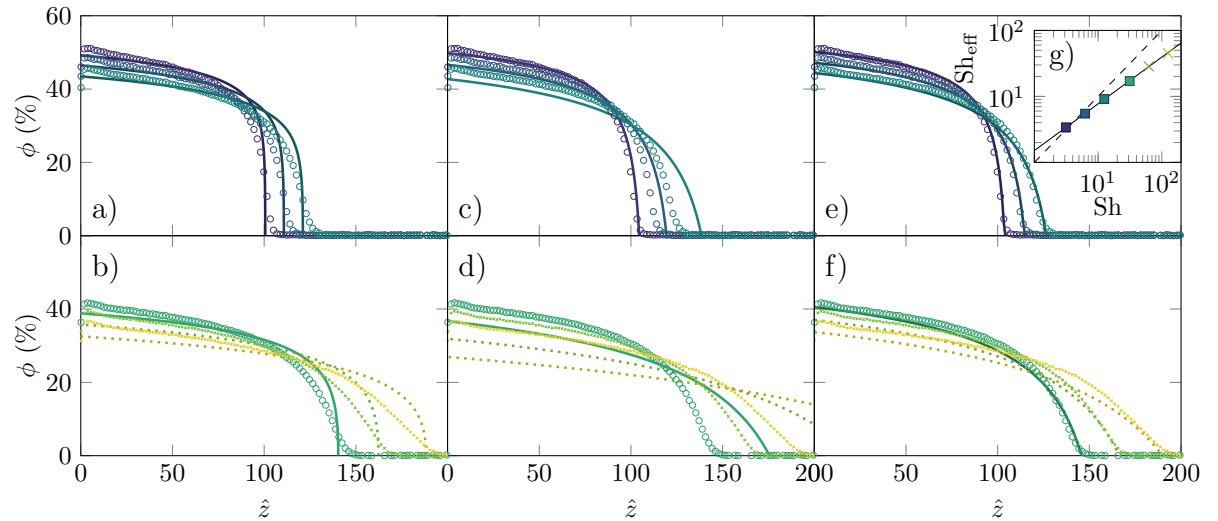


FIG. 7. Particle volume fraction profiles $\phi(z)$ from the left cross-section for $\dot{\gamma} = 25, 50, 100$ [a), c) and e)] $250, 500$ and 1000 s^{-1} [b) and d) and f)]. Same color code as in Figures 4 and 6. Circles correspond to valid experimental data and the small crosses represent experimental data for which centrifugal effects invalidate our analysis. The solid lines show the numerical profiles computed from (a-b) the Zarraga *et al.* correlation with no free parameter, (c-d) the Boyer *et al.* correlation with no free parameter and (e-f) the Boyer *et al.* correlation with the effective Shields number shown in (g). Predictions for the inertia-dominated data are shown with dotted lines in Panels (b), (d) and (f). The dashed line of panel (g) is $Sh = Sh_{\text{eff}}$ and the solid line is the best power-law fit $Sh_{\text{eff}} = 1.52 Sh^{0.70}$. The colored crosses, corresponding to inertia-dominated data, are excluded from the fit.

contact stresses. In order to get some insight into contact stresses, one needs to perform, for example, shear reversal experiments^{31–34}. In such experiments, the suspension is first sheared at a given shear stress or shear rate in a simple shear flow until steady-state is reached. The direction of shear is subsequently reversed (keeping the same value of the applied shear rate or stress), and the viscosity evolution with strain is recorded. In the presence of contact forces, most contacts are predominantly oriented in the compression direction of simple shear. Upon shear reversal, all of these contacts are now in traction and are suddenly broken, which results in an abrupt decrease of the viscosity. The minimum viscosity achieved during the reversal can then be associated mostly with hydrodynamic interactions, whereas the difference between the steady-state viscosity and this minimum provides the contact contribution to the viscosity³⁴.

In order to estimate the particle contact contribution to the shear viscosity, we performed shear reversal experiments on suspensions composed of the same glass beads as in the resuspension experiments, but in a more viscous fluid to avoid sedimentation. These experiments are discussed in Appendix A 2 and the results are shown in Figure 10. Following Peters *et al.*³⁴ to analyze these results, we show that the hydrodynamic part of the shear viscosity is essentially rate-independent, whereas the contact contribution to the viscosity shows a pronounced shear-thinning behavior (see Table I). It suggests that the contact contribution to stress scales as $\dot{\gamma}^{0.76}$, which is broadly consistent with particle stresses scaling as $\dot{\gamma}^{0.7}$ in resuspension experiments [Equation (13)]. Altogether, these observations point to non-Coulomb friction between our glass particles, as recently proposed by Chatté *et al.*¹² and by Lobry *et al.*¹⁴. This means that the resuspension properties

of non-Brownian particles should depend much on the exact nature of the particles and on the way their friction coefficient varies with load and velocity.

VI. CONCLUSION

Previous experimental studies of shear-induced resuspension in the literature focused on the height of the resuspended sediment and needed to assume a viscous scaling either for the particle stress (in the case of the SBM) or for the diffusion coefficient (in the case of the Acrivos model) in order to model their observations. This assumption is justified in the case of rate-independent Coulomb friction between the particles. Here, we have obtained local volume fraction profiles for resuspension in a Taylor-Couette geometry thanks to X-ray imaging. A significant range of volume fractions is covered under various applied shear rates, which allows us to investigate both the volume fraction and shear rate dependence of particle stresses when particle migration due to inertia is small enough, i.e. for $\dot{\gamma} \leq 250 \text{ s}^{-1}$. In the framework of the SBM, our data demonstrate that the particle stresses asymptotically scale as ϕ^2 at low volume fractions and display a nonlinear, shear-thinning scaling with respect to the shear rate. The latter is consistent with the shear thinning observed both in the shear viscosity of the suspension and in the contribution of contacts to this viscosity. This likely points to a non-Coulomb or velocity-weakening friction between the glass particles. Further work on the topic is critically needed. In particular, experiments with a more viscous fluid phase and a larger number of particles in the gap should be performed to confirm our non-

This is the author's peer reviewed, accepted manuscript. However, the online version of record will be different from this version once it has been copyedited and typeset.
PLEASE CITE THIS ARTICLE AS DOI:10.1063/1.5103271

viscous scaling and assess the impact of confinement on our concentration profiles. Experiments using other particle types – metallic, polymeric, or gel – would also be highly relevant to get more insight into the impact of the precise local contact laws between pairs of particles on the particle stresses, as well as on the efficiency of resuspension.

ACKNOWLEDGMENTS

This research was supported in part by the Agence Nationale de la Recherche through the FLUIDIDENSE project (grant number ANR-17-CE07-0040). We wish to acknowledge the support of the Plateforme de Caractérisation des Matériaux d'Aquitaine (PLACAMAT) for allowing experimental time on the X-ray tomography equipment. The authors are greatly indebted to one of the anonymous referees who pointed out centrifugal effects, therefore significantly improving the manuscript. We thank Nicolas Lenoir and Ronan Ledevin for technical support during the experiments. We also thank Élisabeth Guazzelli, Elisabeth Lemaire and Frédéric Blanc for insightful discussions.

Appendix A: Macroscopic Suspension Rheology

In this Appendix we report and discuss the steady-state macroscopic viscosity of suspensions. We also present the results of a series of shear reversal experiments performed to characterize the particle contact contribution to the shear viscosity.

We use the same glass spheres as those used in the resuspension experiments of the main text. This time, the particles are suspended in a mixture of 20% wt. water and 80% wt. UCON (instead of 65% wt. water, 35% wt. UCON), which is also a Newtonian fluid, with a viscosity $\eta_0 \simeq 14.5$ Pa.s at 25°C. Suspensions are prepared at various volume fractions ranging from 10 to 50%. We use a Kinexus Ultra+ rheometer (Malvern Panalytical) equipped with a wide-gap Taylor-Couette geometry, with sandblasted surfaces (rotor diameter 25 mm, stator diameter 37 mm), to characterize the suspensions. Experiments are conducted in the controlled-stress mode. The shear stress and shear strain are obtained from the applied torque and the measured rotation angle by using the standard equations for the Taylor-Couette geometry at the rotor surface.

1. Steady-shear viscosity

For each volume fraction, the steady-shear apparent viscosity is measured by applying a series of logarithmically-spaced constant shear stresses, corresponding to shear rates varying between 0.01 and 10 s⁻¹. Each shear stress is applied for a duration of 10 s.

The steady-state viscosity η is plotted as a function of the steady-state shear rate in Fig. 8 for various particle volume fractions ϕ . At low ϕ , a Newtonian behavior is observed with a viscosity higher than that of the interstitial fluid. As the volume fraction is increased, the viscosity increases and a mild shear-thinning is observed. For $\phi = 50\%$, the apparent viscosity follows a scaling $\eta \propto \dot{\gamma}^{-0.17}$. Similar shear-thinning at high particle concentration has already been reported in a number of other non-Brownian suspensions¹⁰⁻¹⁴.

In order to characterize the viscosity increase with volume fraction, we plot the dimensionless viscosity $\eta(\phi, \dot{\gamma} = 1 \text{ s}^{-1})/\eta_0$ as a function of ϕ in Figure 9. Since the suspensions show shear-thinning at high concentrations, we also show error bars extending from the lowest to the highest dimensionless viscosity measured at each ϕ within the range of investigated shear rates. The increase of η/η_0 with ϕ is similar to that reported for other non-Brownian suspensions⁸ and may be fitted fairly well to a Maron-Pierce law³⁵:

$$\frac{\eta}{\eta_0} = \left(1 - \frac{\phi}{\phi_m}\right)^{-2}, \quad (\text{A1})$$

with $\phi_m = 0.6$, which is in the range of ϕ_m values typically observed for monodisperse frictional spheres^{7,8,26,27}.

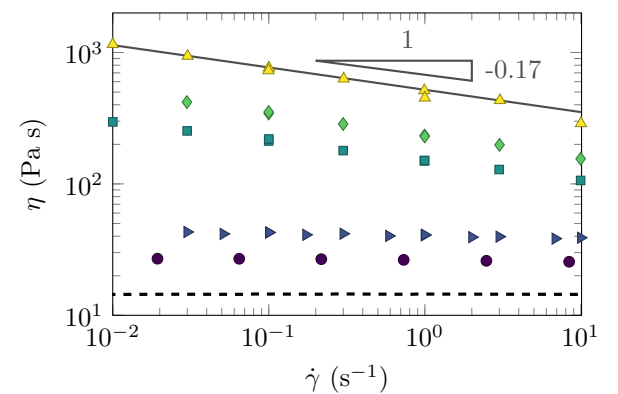


FIG. 8. Shear viscosity η of a suspensions of glass spheres (diameter $2a = 250 \mu\text{m}$) in an 80% wt. UCON aqueous solution as a function of the shear rate $\dot{\gamma}$. The thick black line shows the viscosity of the pure fluid. The purple circles, blue left pointing triangles, teal squares, green diamonds and yellow upwards pointing triangle respectively correspond to $\phi = 10\%$, 20%, 40%, 45% and 50%. The gray solid line provides the best power-law fit $\eta \propto \dot{\gamma}^{-0.17}$ to the 50% data.

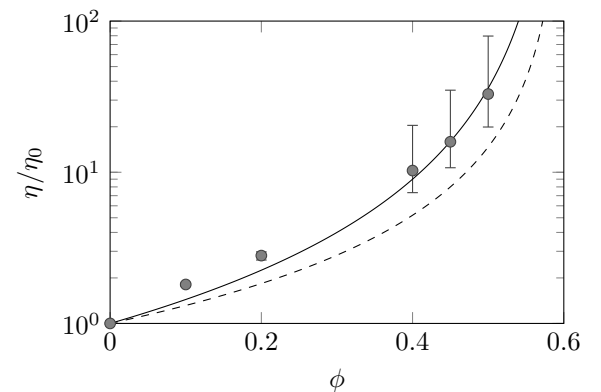


FIG. 9. Dimensionless shear viscosity η/η_0 of a suspension of glass spheres (diameter $2a = 250 \mu\text{m}$) in an 80% wt. UCON aqueous solution, plotted for $\dot{\gamma} = 1 \text{ s}^{-1}$, as a function of the particle volume fraction ϕ . Error bars on the experimental data show the maximum and minimum value measured over the range of shear rates of Fig. 8. The empirical viscosity laws of Maron and Pierce³⁵ (solid line) and Krieger and Dougherty³⁶ (dashed line), both with $\phi_m = 0.6$, are also shown.

2. Shear reversal experiments

Next, following Lin *et al.*³³ and Peters *et al.*³⁴, we use shear reversal experiments to evaluate the particle contact contribution to the shear viscosity. As in Blanc, Peters, and Lemaire³², since we use a stress-controlled rheometer, we work in the controlled-stress mode in order to monitor accurately the transient evolution of the viscosity with strain. We first shear the suspension at a constant imposed stress τ until the shear strain γ exceeds 10 and a steady state is reached. We then apply a resting period of 10 s at zero stress before applying a stress $-\tau$ until a new steady state is reached. We call γ_R

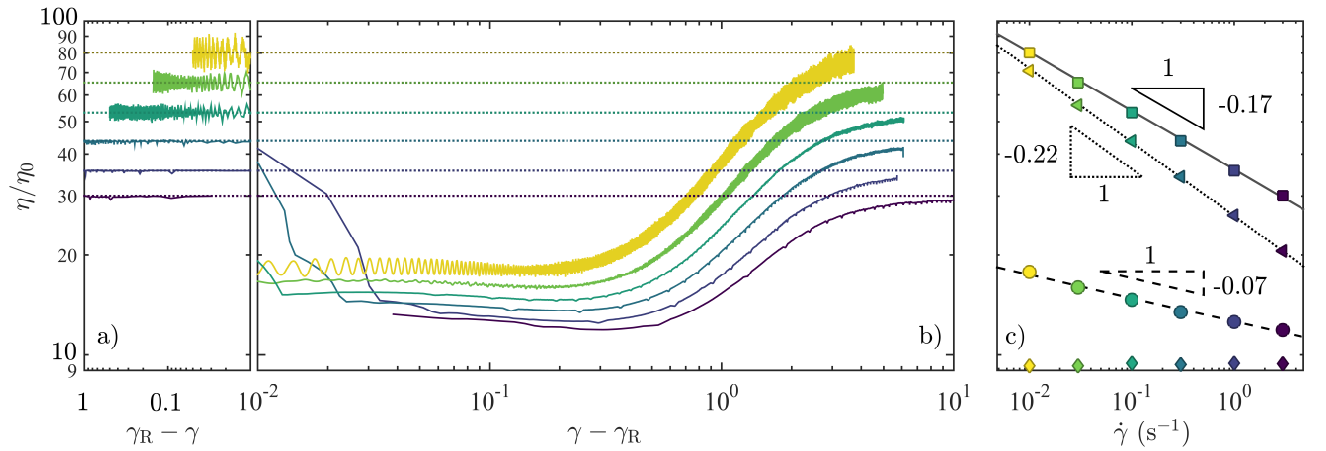


FIG. 10. Shear Reversal experiments of a 50 % wt. suspension of glass particles in an 80 % wt. UCON-20% wt. aqueous mixture. a) Steady-state relative viscosity η/η_0 of the suspension plotted as a function of the strain before reversal $\gamma_R - \gamma$. Colors code for an applied shear stress of 11.5 Pa (yellow), 28.3 Pa (green), 76.6 Pa (green-blue), 191 Pa (dark teal), 511 Pa (dark blue) and 1310 Pa (purple). b) Evolution of the relative viscosity η/η_0 as a function of the shear strain after reversal $\gamma - \gamma_R$. The shear reversal data for the all shear rates were smoothed over 10 samples for clarity. c) Relative viscosity η/η_0 as a function of the applied shear rate. Squares: steady-state viscosity, obtained from a). Circles: relative viscosity minimum η_{\min}/η_0 reached in b) soon after reversal. Triangles: contact contribution to the suspension viscosity η^C . Diamonds: hydrodynamic contribution to the suspension viscosity η^H . Contact and hydrodynamic contributions are deduced from the decomposition proposed by Peters *et al.*³⁴, which we recall in Equations (A2) and (A3). Same color codes as in a) and b).

the reversal shear strain attained when the stress is set to $-\tau$. We monitor the evolution of the shear viscosity both before and after shear reversal. These measurements are repeated for the same values of τ as in the previous section and shown in Fig. 10a-b for a suspension of volume fraction $\phi = 50\%$.

As already observed in the literature^{31,33,34}, the shear viscosity just after reversal is smaller than the steady-state viscosity and it subsequently increases with strain until it reaches a steady state for a strain of order 5. Figure 10b-c shows that the steady-state viscosity is more sensitive to the shear rate than the viscosity minimum η_{\min} reached shortly after shear reversal. This last observation is consistent with the numerical simulations of Peters *et al.*³⁴, which suggest the following decomposition:

$$\eta = \eta^H + \eta^C, \quad (\text{A2})$$

$$\eta_{\min} = \eta^H + 0.17\eta^C, \quad (\text{A3})$$

η^H and η^C being the hydrodynamic and contact contributions to viscosity; the choice of the 0.17 numerical factor may *a priori* depend on the interparticle, local friction coefficient. We perform a similar decomposition in Figure 10c. Using a numerical factor 0.12 (instead of 0.17) in Equation (A3), we observe that the hydrodynamic part of the suspension viscosity η^H is constant, as expected of a suspension of non-Brownian hard spheres. Following that choice, the contact viscosity η^C decreases for increasing shear rates $\dot{\gamma}$, and point to an average shear-thinning exponent of -0.24 ± 0.02 for the contact viscosity, as shown in Table I. This exponent broadly agrees with the -0.30 shear-thinning exponent of the normal viscosity obtained from resuspension experiments in the main text.

ϕ	0.10	0.20	0.40	0.45	0.50
n (total)	-0.01	-0.02	-0.15	-0.18	-0.17
n (contacts)	/	/	-0.25	-0.25	-0.22

TABLE I. Shear-thinning exponents n of the suspension viscosity η with the shear rate: $\eta \propto \dot{\gamma}^n$. The total exponent is obtained from the flow curves of Fig. 8. The contact exponent is deduced from the viscosity decomposition of Peters *et al.*³⁴ for shear reversal experiments, such as the one shown in Fig. 10. A viscous scaling implies $n = 0$.

Appendix B: Geometrical Approximations and Parallax Issues

In this Appendix, we provide more details on the approximations made in Section II B. We first describe how computing $\phi(r, z)$ involves averaging over different radial positions. We then detail the impact of a finite distance between the X-ray source, the geometry and the detector on the final measurements, which we shall refer to as parallax issues in the main text.

1. General Approximation

For an X-ray source located at infinity, the apparent thickness $w(x)$ of the slab of suspension crossed by the X-rays at a position x within the two cross-sections defined in Figure 1b is simply given by:

$$w(x) = 2\sqrt{R_0^2 - x^2}. \quad (\text{B1})$$

X-rays actually cross slabs of the suspension corresponding to multiple values of the radial distance r . Given the notations in Figure 1b, the integral version of the Beer-Lambert law reads:

$$A(x, z) = 2(\varepsilon_p - \varepsilon_f) \int_{r=x}^{R_o} \phi(r, z) \underbrace{\frac{r}{\sqrt{r^2 - x^2}}}_{\zeta(x, r)} dr. \quad (\text{B2})$$

The approximation that we make in the main text consists in assuming that:

$$\phi(r = x, z) \simeq \frac{A(x, z)}{w(x)(\varepsilon_p - \varepsilon_f)}. \quad (\text{B3})$$

Since $2 \int_x^{R_o} \zeta(x, r) dr = w(x)$, Equation (B2) shows that the above approximation is true only for r -independent concentration fields or for x very close to the outer edge. In the latter case, however, the precision on the volume fraction measurement is poor due to the small value of $w(x)$ (see Appendix E for more details).

Consequently, the apparent $\phi(r, z)$ inferred from Equation (B3) is actually a weighted average of the true $\phi(r, z)$ over $x \leq r \leq R_o$. The weight of $r \simeq x$ in this averaging process is particularly high since $\zeta(x, r)$ diverges for $r \rightarrow x$. This means that in the absence of strong radial gradients in the particle volume fraction, we may use Equation (B3) to obtain a reasonable estimate of the local volume fraction. In any case, our study is mostly focused on the vertical distribution of particles so that the details of the volume fraction field in horizontal planes can be averaged out.

2. Finite distance effects: parallax issues

In practice, both the X-ray source and the detector are located at a finite distance from the Taylor-Couette geometry. This implies that the incident X-rays, depicted so far as a parallel beam, actually diverge from the source. This has a direct impact on the data especially in the vertical plane.

a. Changes in the horizontal plane

First, the width $w(x)$ has to be computed for a source located at a finite distance $d \simeq 25$ cm from the center of the geometry. The location x at which an X-ray hits the sensor now varies with the distance between the source and the detector, $D \simeq 70$ cm. The geometrical relations shown in Figure 11 allow us to derive the finite-distance slab thickness of the sediment crossed by the X-rays as a function of x through the use of θ , defined as $\tan \theta = x/D$:

$$w_{\text{FD}}(x) = 2R_o \sin \beta \quad (\text{B4})$$

$$= 2 \sqrt{R_o^2 - \frac{d^2 x^2}{D^2 + x^2}}. \quad (\text{B5})$$

The boundaries of our cross-sections are defined by two limit rays of angles θ_m and θ_M , such that $d \sin \theta_m = R_i$ and

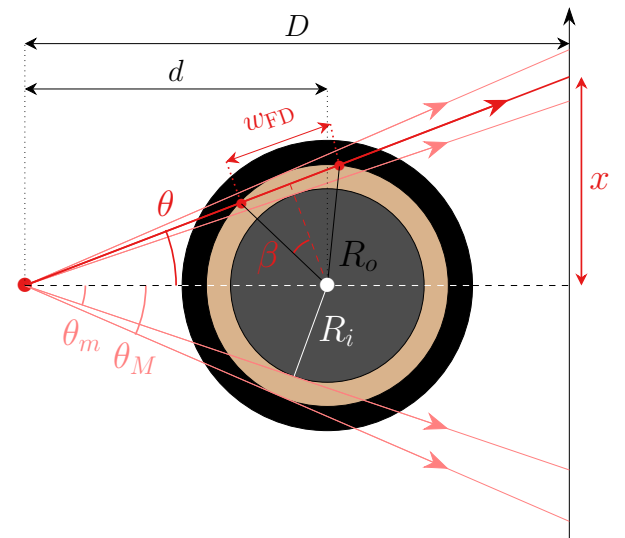


FIG. 11. Impact of the finite distance between source, geometry and detector in the horizontal plane. We notice that x is proportional to D

$d \sin \theta_M = R_o$. We can relate these angles to the locations x_m and x_M where the limit rays hit the sensor plane:

$$x_m = \frac{R_i D}{\sqrt{d^2 - R_i^2}}, \quad (\text{B6})$$

$$x_M = \frac{R_o D}{\sqrt{d^2 - R_o^2}}. \quad (\text{B7})$$

We notice that $x_M - x_m$ is not equal to $R_o - R_i$ and is instead proportional to D . The size—expressed as a number of pixels—of the cross-section in our raw images thus depends on both the true resolution of the sensor (the number of pixels per mm) and the distance D . In practice, we choose a scaling factor S in the pictures so that the apparent cross-section size is equal to $S(x_M - x_m) = R_o - R_i$.

Finally, the impact of the finite distance between the source and the detector can be quantified as $[w_{\text{FD}}(Sx) - w(x)]/w(x)$. Given our estimates for $d/R_o \geq 10$ and $D/R_o \geq 20$, the finite distance leads to corrections on w that are always smaller than 0.1% and can therefore be neglected.

b. Impact in the vertical direction

Since the source is pointlike and set at a finite distance from the geometry, X-rays may cross the suspension at some angle relative to the horizontal direction. Consequently, as shown in Figure 12, our measurements are also averaged vertically over a typical “smoothing” length ℓ that can be expressed as a function of the vertical distance Δz between the source and the slab of suspension under investigation and as a function of the slab thickness $w(x)$:

$$\ell = 4D \frac{w(x)|\Delta z|}{4d^2 - w^2(x)}. \quad (\text{B8})$$

In our setup, the vertical position of the source is $z \simeq 16$ mm in the reference frame of Figure 2. In the case of the sediment at rest, there should be a sharp transition from $\phi = \phi_m$ to $\phi = 0$ at the top of the sediment. We can thus readily estimate ℓ by measuring the typical width of the transition zone on the experimental map of Figure 2a. In the worst-case scenario, i.e. at the bottom of the sediment and close to the inner wall, we predict $\ell \simeq 3.3$ mm, which is compatible with the concentration maps of Figure 2. We further predict $\ell \simeq 1.4$ mm at the top of the sediment at rest and close to the inner wall, in fair agreement with Figure 2a-b. We finally compute an estimate of ℓ at the centre of the cross-section, used to derive the concentration profiles examined in Sections III B and IV. We obtain $\ell = 0.146|\Delta z|$ which amounts to 4 particle diameters at the top of the sediment at rest and to 9 particle diameters at the bottom of the sediment. The impact of parallax is very limited at the bottom of the sediment since no significant variations of ϕ are observed over ℓ . Rather, its impact is maximal at the top of the sediment and for low shear rates where ϕ show the strongest spatial variations.

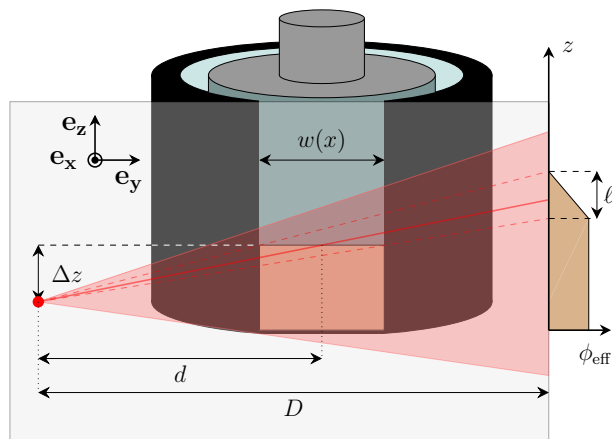


FIG. 12. Parallax issues along the vertical direction. For a pointlike source located at a vertical distance Δz from the suspension slab under study, volume fraction measurements are smoothed over a typical size ℓ , proportional to the suspension thickness crossed by the X-rays $w(x)$ and to Δz for small X-ray angles.

We may compute concentration profiles resulting from vertical parallax issues, taking into account the fact that ℓ varies along the vertical axis. This is done in Figure 13, for which we use the Zarraga correlation, both because it has been experimentally reported by D'Ambrosio *et al.*³⁷ and because they are the most sensitive to vertical parallax issues. It clearly shows that the smoothing is insufficient to explain the shape of the experimental profiles at 25 s^{-1} and that the effect of smoothing for $50, 100$ and 250 s^{-1} is negligible. This can be understood given the fact that the vertical position of the top of the sediment rises very close to that of the X-ray source for the four lower shear rates, leading to a sharp decrease of ℓ at the top of the sediment, down to 1.8, 1.3, 0.6 and 0.55 particle diameters for the four lower shear rates. From these results, we may conclude that our experimental results cannot be explained by a Zarraga concentration profile coupled

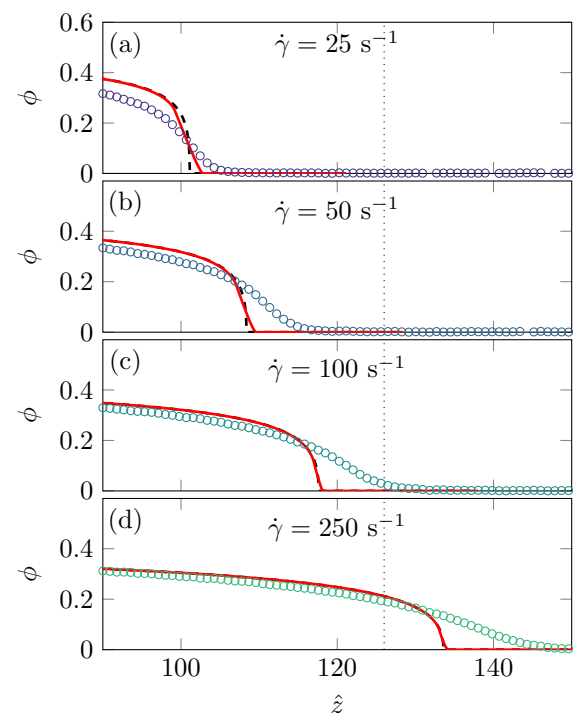


FIG. 13. Impact of the vertical parallax issues on Zarraga theoretical concentration profiles, and comparison with experimental data for $\dot{\gamma} = 25 \text{ s}^{-1}$ (a), 50 s^{-1} (b), 100 s^{-1} (c) and 250 s^{-1} (d). Black dashed lines, concentration profile based on the Zarraga correlation with no vertical parallax smoothing. Red solid line, concentration profile smoothed by parallax issues. Circles, experimental data. The dotted line represents the position of the X-ray source.

to vertical parallax issues. Their impact can still be noticed on the normal viscosity data at low volume fraction in Figures 6 and 18 and it could explain part of the slight curvature of the concentration profiles for ϕ very close to 0 in Figures 3, 4 and 7. The impact of this parallax issue then remains limited to such details.

Appendix C: Consequences of centrifugal forces

The analysis performed in the main text is purely one-dimensional (1D). We then implicitly neglect the centrifugal forces that are acting on the particles due to geometry curvature. For the highest shear rates tested, centrifugal forces exceed buoyancy terms and it is thus necessary to solve the full, two-dimensional problem using the SBM, including the secondary currents driven by gravity and the anisotropy of normal stress differences. The momentum balance in the particle phase reads:

$$\nabla \cdot \Sigma_p - \Delta \rho \phi g \mathbf{e}_z + \Delta \rho \frac{\dot{\gamma}^2 e^2}{r} \mathbf{e}_r - \frac{9 \eta_0}{2 a^2} \frac{\phi}{f(\phi)} (\mathbf{u}_p - \mathbf{u}) = 0, \quad (\text{C1})$$

where the third term corresponds to the centrifugal force. The last term represents the mean force exerted by the fluid phase; it is proportional to the difference of \mathbf{u}_p –the particle phase

velocity— and \mathbf{u} —the suspension velocity. $f(\phi)$ is the hindrance function, modelled as $(1 - \phi)^5$ following Richardson and Zaki³⁸. This last term does not necessarily vanish in the steady, two-dimensional flow whereas it is identically zero in the 1D case.

The previous equation is complemented by the Navier-Stokes (NS) equations, i.e. the momentum balance of the whole suspension,

$$\rho (\partial_t \mathbf{u} + \mathbf{u} \cdot \nabla \mathbf{u}) = -\nabla p + \nabla \cdot \Sigma + \rho \mathbf{g}, \quad (\text{C2})$$

and the conservation equations of both the particle phase and that of the suspension,

$$\partial_t \phi + \nabla \cdot (\phi \mathbf{u}_p) = 0 \quad (\text{C3a})$$

$$\nabla \cdot \mathbf{u} = 0. \quad (\text{C3b})$$

The density ρ appearing in the NS equation is the local density of the suspension $\rho = \rho_f + \phi \Delta \rho$, where ρ_f is the liquid density. The particle stress Σ_p is modelled as in the 1D case by a diagonal tensor [see, for instance, Eq. (3.1) from Guazzelli and Pouliquen⁸], while the stress tensor of the suspension is assumed to be given by:

$$\Sigma = \eta(\phi) (\nabla \mathbf{u} + \nabla \mathbf{u}^T) + \Sigma_p. \quad (\text{C4})$$

For the sake of simplicity, we neglect the contribution of the particle stress generated by the secondary currents in the plane ($\mathbf{e}_r, \mathbf{e}_z$), but keep the one due to the main shear flow.

We use a 2D finite volume numerical approach to solve the above set of equations, using a home made second order cell-centered implicit scheme to solve the particle conservation for a given velocity field of the suspension. An extra but small diffusion term has been added to the particle flux to facilitate convergence. For a given concentration field, the scheme used for the Navier-Stokes equations treats the non-linear convective term and external forces explicitly and the viscous term in an implicit fashion. Incompressibility is ensured using a projection approach. We conduct our simulations on a regular grid containing 25×250 points respectively in the radial and vertical –axial– directions. The simulations match exactly the geometrical features and physical properties of the experiments.

We show the simulation results in Figure 14, for the four highest shear rates tested experimentally. We find, as compared to the 1D case, that the centrifugal forces tilt the resuspended sediment, the particle volume fraction being higher close to the stator. The coupling with Navier-Stokes equations leads to a convection pattern which in turns curbs the tilt: the suspension velocity points downwards close to the stator and upwards at the rotor. This current is mostly localized at the top of the resuspended sediment, where the local viscosity is low. The typical velocity of this secondary current is from a few to one hundred micrometers per second, and is thus of the order of the sedimentation velocity for the highest shear rates (500 and 1000 s^{-1}). Both buoyancy and normal stress anisotropy could in principle lead to such secondary currents. Looking into the details of the numerical results, we observe that the

currents driven by the normal stress anisotropy always remain two orders of magnitude lower than buoyancy currents.

In principle, these effects preclude the use of the simple 1D model to interpret the experimental data. Nevertheless, Figure 14 shows they only have a marginal influence on the concentration maps up to $\dot{\gamma} = 250 \text{ s}^{-1}$ (included) for which the volume fractions, especially at the center of the gap, are very close to the 1D case. From $\dot{\gamma} = 500 \text{ s}^{-1}$ upwards, centrifugal forces significantly alter the concentration profiles. While the volume fraction profile distortion looks acceptable for $\dot{\gamma} = 500 \text{ s}^{-1}$, it is significant for the low volume fractions which are of highest interest in our article. For $\dot{\gamma} = 1000 \text{ s}^{-1}$, profiles are severely distorted for all ϕ . We therefore exclude these two shear rates from our analysis in the main text.

Importantly, up to 250 s^{-1} , the secondary currents have no influence on the apparent profiles, and the main conclusions of the analysis are robust. The simulation results obviously depend on the correlation used to model the particle stress Σ_p . The results shown in Fig. 14 have been obtained using the empirical correlation found in this paper, i.e. $\Sigma_{p33} = 1.53 \dot{\gamma}^{0.7} \phi^2 / (1 - \phi / \phi_m)^2$, but we have checked that the same conclusion holds for the correlations of Boyer and of Zarraga: up to $\dot{\gamma} = 250 \text{ s}^{-1}$ the predicted profiles are not sensitive to the centrifugal force and are thus very similar to the 1D case. In particular, we would have been able to identify the vertical asymptotic behaviour of $\phi(z)$ for $\phi \rightarrow 0$ predicted by the correlation of Zarraga, Hill, and Leighton Jr.¹⁰, i.e. for $\Sigma_p \propto \phi^3$.

Appendix D: Spatiotemporal diagrams of resuspension experiments

Figure 15 displays particle volume fraction maps averaged over the gap width as a function of vertical position z and time t for three different applied shear rates. All three plots show that a steady profile is reached after $t \simeq 70 \text{ s}$. Hence, the mean volume fraction fields shown in Figure 2, where the temporal average was performed over $t = 90\text{--}150 \text{ s}$, do not include any transient regime and fully characterize viscous resuspension at the steady state.

Appendix E: Data validation and calibration

1. Locating the gap in X-ray images

When computing $\phi(r, z)$ using Equation (B3), we notice that both A and w tend to zero for $x = R_o$. Therefore, volume fraction measurements close to the outer cylinder are particularly sensitive to where we define $x = R_o$ in the raw images. Any imprecision δx on the position of the outer wall may result in dividing A by an effective thickness $w(x + \delta x)$ that greatly differs from the actual $w(x)$ in the vicinity of $x = R_o$. Thus, we carefully choose the position of $x = R_o$ in both cross-sections so as to (i) obtain a gap width compatible with the actual gap of the geometry (we respectively get 2.00 mm and 2.06 mm for the left and right cross-sections) and (ii) obtain a

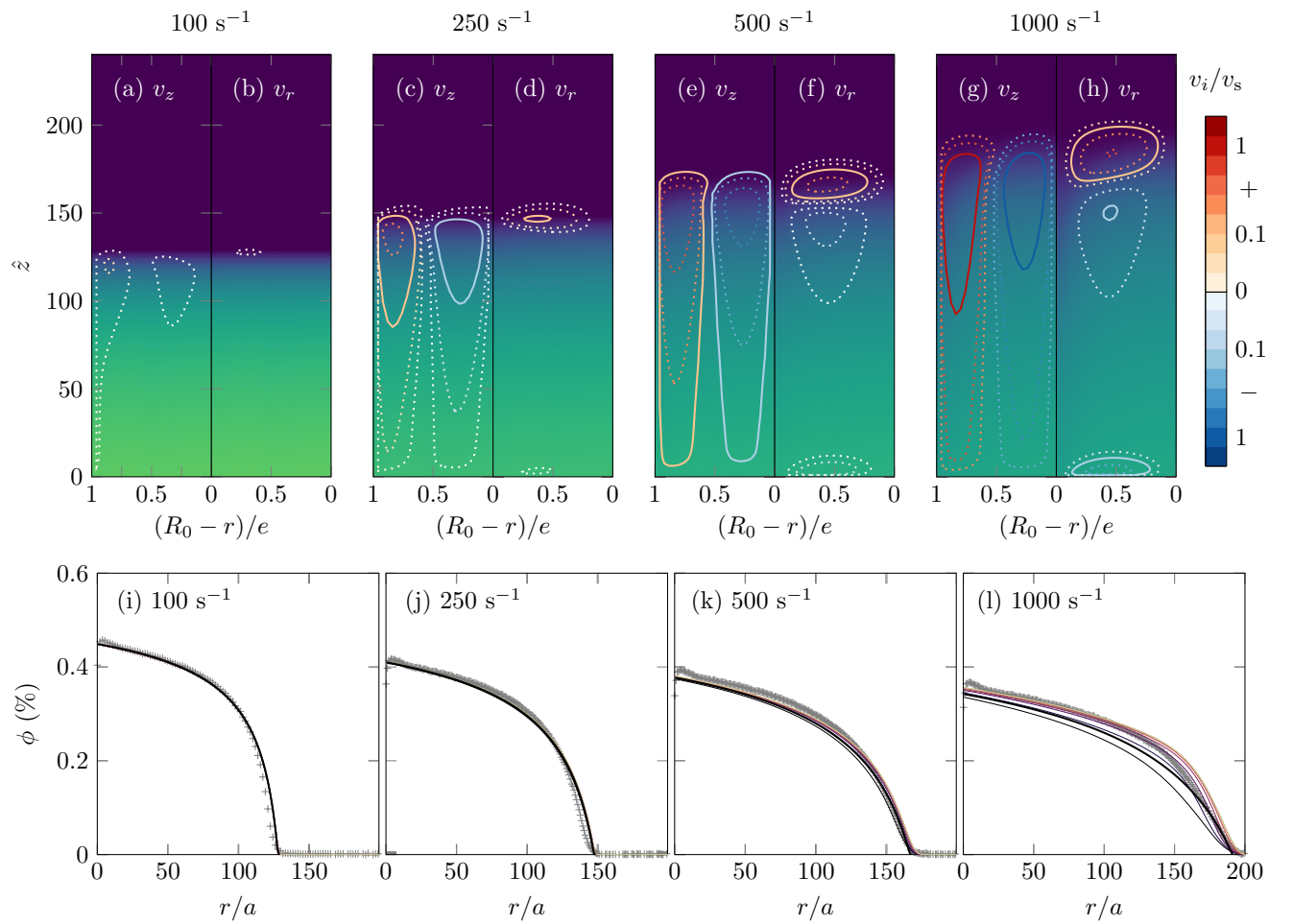


FIG. 14. Numerical investigation of centrifugal effects in our experiment. (a-h), predicted concentration maps for the four highest shear rates considered in this Article, respectively 100, 250, 500 and 1000 s^{-1} . We superpose in Panels (a),(c),(e),(g) the iso-lines of v_z , the vertical component of the suspension velocity field, and we do the same for the radial component v_r in Panels (b),(d),(f),(h). Both quantities are normalized by the free settling velocity of our particles, v_s . The two color bars (blue and red) respectively represent negative and positive values of v_r and v_z . The predicted concentration maps take into account the natural averaging due to X radiography, but excludes parallax issues. Panels (i-l) show the predicted concentration profiles. The thick black line depicts the estimated profiles when no migration and no secondary currents are considered (i.e. the 1D case). The thin colored lines correspond to the full, two dimensional simulations of the SBM. Their color scheme corresponds to the seven divisions of the gap detailed in Figure 3. The gray crosses are the corresponding experimental data.

local minimum of volume fraction at the outer edge of the geometry, followed by a progressive increase of ϕ up to $r \approx a$ for all shear rates. Our setup indeed allows us to resolve particles that are in contact with the walls, which naturally introduces an apparent particle concentration gradient at the outer boundary.

2. Estimating the extinction coefficients ε_p and ε_f

The last step when converting $A(x, z)$ into $\phi(r, z)$ consists in estimating the proportionality constant between A/w and ϕ , namely the extinction coefficient difference $\varepsilon_p - \varepsilon_f$. To this

aim, we perform the following integral:

$$2\pi\rho_p \int_{R_i}^{R_o} x dx \int_0^\infty \frac{A(x, z)}{w(x)} dz = M(\varepsilon_p - \varepsilon_f) \quad (E1)$$

For a given shear rate, we compute the above integrals for each cross-section. Measuring independently the particle mass $M = 4.00 \pm 0.01$ g with a precision scale allows us to deduce the extinction coefficient difference $\varepsilon_p - \varepsilon_f$ from Equation (E1). Figure 16 shows all the individual estimations of $\varepsilon_p - \varepsilon_f$ together with the average value $\varepsilon_p - \varepsilon_f \approx 14.9$ m^{-1} .

Such an extinction coefficient difference is compatible with an ordered layer at the outer edge of the experiment. We have plotted in Figure 17 the volume fraction profiles for the pixels corresponding to the outermost concentration profile zone (see Section III B and Figure 3) for the sediment at rest, us-

This is the author's peer reviewed, accepted manuscript. However, the online version of record will be different from this version once it has been copyedited and typeset. PLEASE CITE THIS ARTICLE AS DOI:10.1063/1.5103271

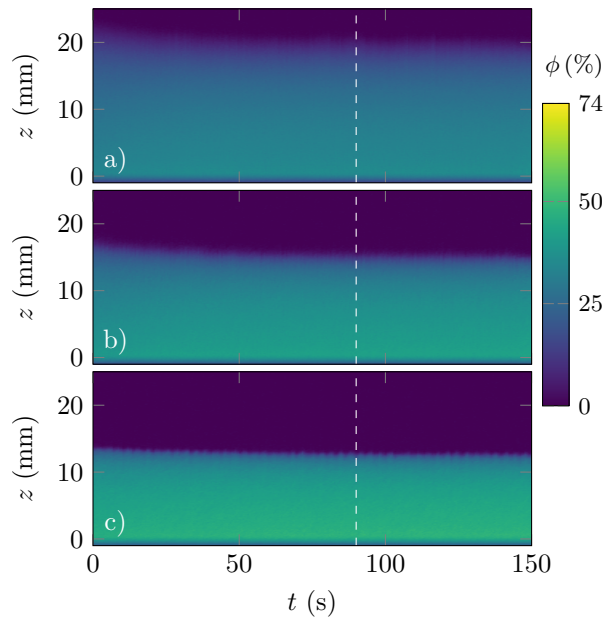


FIG. 15. Spatiotemporal maps of the particle volume fraction for three different shear rates: a) 500 s^{-1} ; b) 100 s^{-1} ; c) 25 s^{-1} . Each individual $\phi(r, z, t)$ at time t is averaged over r in order to provide a space-time representation in the (z, t) plane. The mean volume fraction fields presented in Figure 2 are averaged over the last 120 images, i.e. from the white dashed line to the right end of the axis.

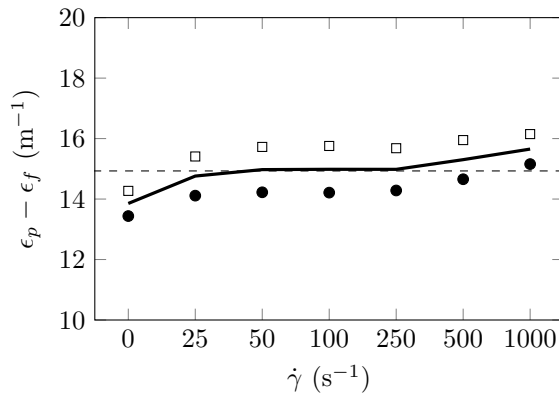


FIG. 16. Estimation of the differential extinction coefficient $\epsilon_p - \epsilon_f$ deduced from the concentration profiles when using Equation (E1) with the total particle mass $M = 4.00 \text{ g}$. Open squares: estimation from the left CS. Filled, black circles: estimation from the right CS. The black line shows the average over the two CS. The dashed line corresponds to the global average $\epsilon_p - \epsilon_f = 14.9 \text{ m}^{-1}$.

ing $\epsilon_p - \epsilon_f = 14.9$. We notice that ϕ sometimes exceeds 0.74, yet we have verified that the excursions above $\phi = 0.74$ never occur over more than one particle diameter, reflecting both on the ordering at the wall and the subparticle resolution of the X-ray apparatus. The average profile (Figure 17, in black) shown in the main text only seldom exceeds this value, confirming our data validation scheme.

Finally, we estimate the initial height h_0 to be used for the

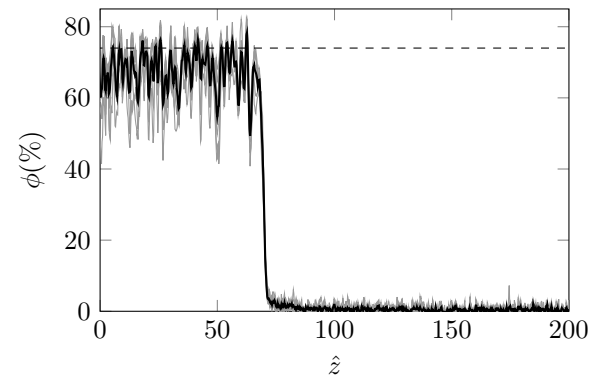


FIG. 17. Particle volume fraction profiles near the outer wall of the Taylor-Couette geometry obtained with $\epsilon_p - \epsilon_f = 14.9 \text{ m}^{-1}$ for $\dot{\gamma} = 0 \text{ s}^{-1}$. Gray lines correspond to a time-average of $\phi(r, z)$ at steady state for r values corresponding to the 6 pixels closest to the outer cup on the raw images for both the left and right cross-sections. The thick black line is an average of the gray lines. The dashed line corresponds to $\phi_{\text{cfc}} = 0.74$, which is the upper volume fraction limit for monodisperse spheres.

models in Section IV D from the measured particle mass M and by taking $\phi_m = 0.6$ for the maximum volume fraction so that $h_0 = M / [\rho \pi (R_o^2 - R_i^2) \phi_m] = 70.4a$. In practice, since we observe discrepancies in the sediment height between the left and right cross-sections (see Figures 2 and 4), we correct h_0 for each cross-section based on the data in Figure 16 and obtain $\hat{h}_0 = 72.8$ for the left CS and 68.6 for the right CS.

Appendix F: Effect of slip and confinement in the experiment

The results shown in Figures 6 and 7, discussed in Section V, are striking and counter intuitive. We must ensure that they do not result from undesirable physical effects present in our experiment.

1. Wall slip

Slip may be present at the walls of our Taylor-Couette cell. Experiments by Jana, Kapoor, and Acrivos³⁹ conducted in suspensions of non-Brownian hard spheres in a Newtonian solvent show that slip becomes noticeable only for volume fractions above 0.45. The slip rate then increases with ϕ but remains quite limited—below ten percent of the rotor velocity—up to $\phi = 0.52$, the maximum volume fraction investigated by Jana, Kapoor, and Acrivos³⁹. In Figure 7, we observe that the correlation of Boyer fits our experimental data for $\dot{\gamma} = 50 \text{ s}^{-1}$ fairly well without relying on the non-viscous scaling of the normal viscosity we observe in Figure 6. This means that the effective Shields number is roughly equal to the actual Shields number for this particular shear rate. Alternatively, it means that if non-viscous effects are solely due to wall slip, it would be zero for this particular shear rate. For higher shear rates, the non-linear scaling of Equation 13 means a smaller effective

tive Shields number, a smaller effective strain rate, and hence a higher wall slip. However, for higher applied shear rates, the sediment is resuspended more strongly, resulting in lower volume fractions, and, following Jana, Kapoor, and Acrivos³⁹, a lower or even negligible wall slip, leading to a contradiction. Wall slip therefore cannot explain our non-viscous scaling.

2. Confinement

The peculiar dependence of Σ_p with ϕ and $\dot{\gamma}$ could also be due to particle confinement present in our geometry. Confinement effects may come from the narrow gap width of the geometry or from the limited height of the sediment h compared to the particle radius a .

a. Lateral confinement Our experimental configuration involves ~ 8 particles across the gap, which is slightly below the classical limit requiring at least ~ 10 particle diameters to accurately reflect bulk behavior in granular materials⁴⁰. However, radial confinement may not be that crucial since we report layering that extends over only 1 to 2 particle radii from the walls without any other significant radial gradients in the volume fraction.

b. Vertical confinement Turning to the case of vertical confinement, we note that imposing a zero velocity at the bottom of the cup provides incompatible boundary conditions with the velocity of the inner cylinder that imposes the global shear rate. The consequences of such incompatibility should be even more drastic for smaller sediment heights. To test this idea, we performed additional resuspension experiments with a number of particles two times smaller than in previous measurements (see Appendix G). Such experiments show a larger dispersion of the normal viscosity $\eta_{n,3}$ when plotted as a function of ϕ . Yet, the scaling proposed in Equation (13) remains valid for the larger volume fractions, i.e. close to the bottom wall, suggesting that it results from a bulk property of the suspension rather than from confinement effects. A better control of boundary conditions at the edges of the geometry (top or bottom) is possible, for instance by using a non-miscible, very dense fluid such as mercury at the bottom of the geometry^{18,37} or by considering positively buoyant particles in a dense fluid. Such experiments could confirm the general nature of Equation (13).

Appendix G: Normal viscosities for a different number of particles

Additional experiments have been conducted using only half of the particle number used in the main text, bringing the global volume fraction in the experiment down to 5%. Figure 18 shows the normal viscosities $\eta_{n,3}$ rescaled by the same factors as those used in Figure 6. Discrepancies between shear rates are rather high for volume fractions below $\phi = 30\%$. This is to be expected since the resuspended sediment height is smaller, leading to larger parallax issues in the vertical direction. Nevertheless, their behavior at large volume fractions looks universal and matches the correlation pro-

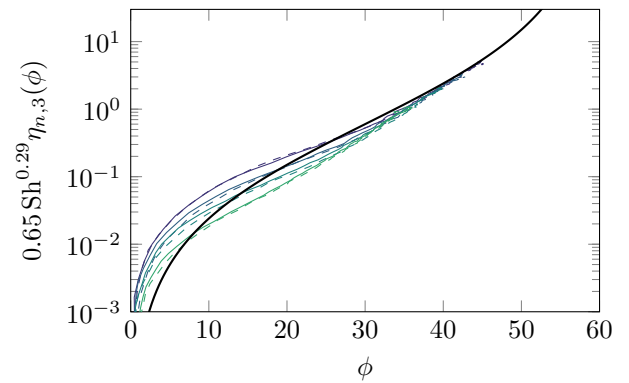


FIG. 18. Rescaled normal viscosity $0.65 \text{Sh}^{0.29} \eta_{n,3}$ as a function of volume fraction ϕ for experiments with a global volume fraction of 5%, plotted following the results of Figure 6. Colored lines depict experimental data: shear rates range from 25 s^{-1} (purple) to 250 s^{-1} (green). The black solid line corresponds to the normal viscosity correlation proposed by Boyer *et al.*⁷.

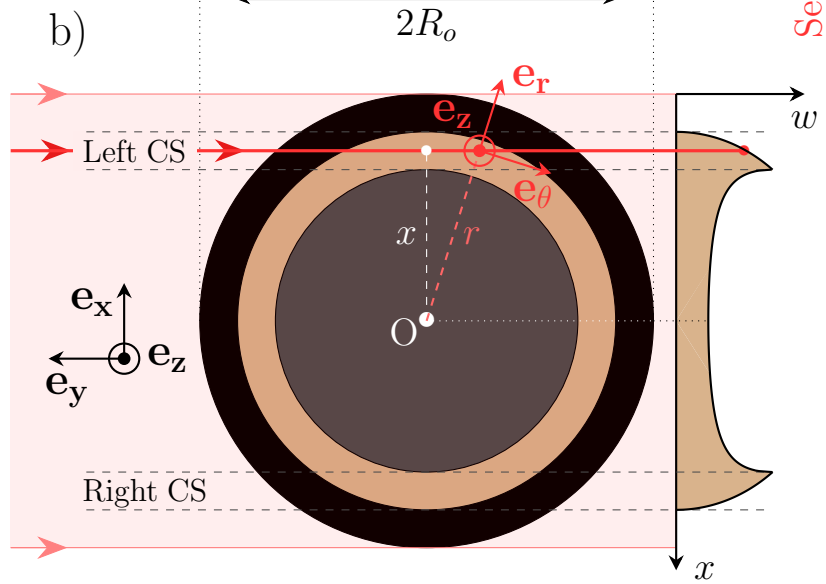
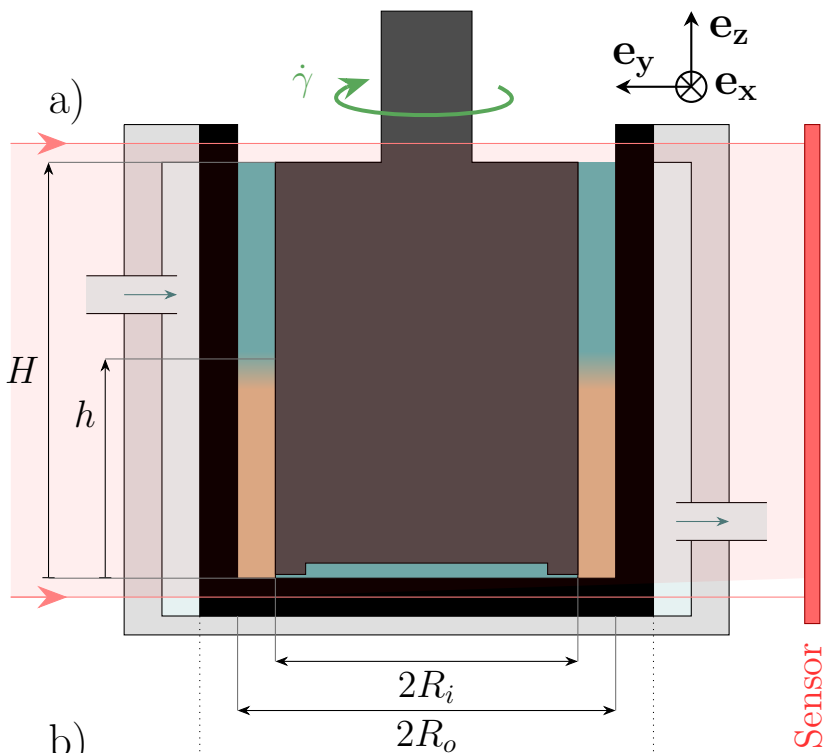
posed by Boyer, Guazzelli, and Pouliquen⁷ fairly well. This result confirms that resuspension does not depend on the total number of particles, and hence that the process is not strongly affected by boundary conditions.

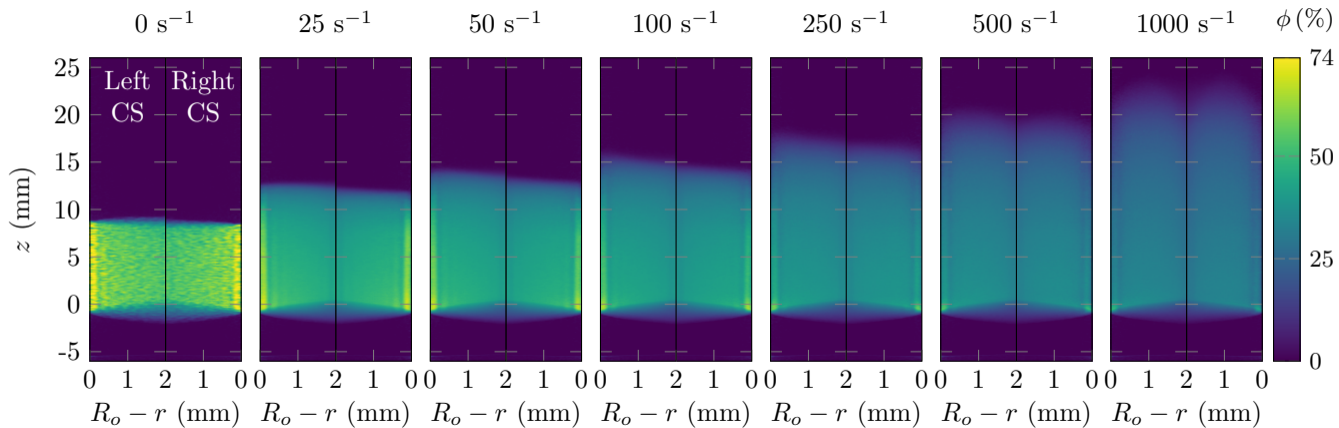
- ¹G. G. Stokes, *On the effect of the internal friction of fluids on the motion of pendulums*, Vol. 9 (Pitt Press Cambridge, 1851).
- ²A. Einstein, "Eine neue Bestimmung der Moleküldimensionen," *Ann. Phys.* **324**, 289–306 (1906).
- ³P. R. Nott and J. F. Brady, "Pressure-driven flow of suspensions: Simulation and theory," *J. Fluid Mech.* **275**, 157–199 (1994).
- ⁴J. F. Morris and F. Boulay, "Curvilinear flows of noncolloidal suspensions: The role of normal stresses," *J. Rheol.* **43**, 1213–1237 (1999).
- ⁵D. Lhuillier, "Migration of rigid particles in non-Brownian viscous suspensions," *Phys. Fluids* **21**, 023302 (2009).
- ⁶P. R. Nott, É. Guazzelli, and O. Pouliquen, "The suspension balance model revisited," *Phys. Fluids* **23**, 043304 (2011).
- ⁷F. Boyer, É. Guazzelli, and O. Pouliquen, "Unifying suspension and granular rheology," *Phys. Rev. Lett.* **107**, 188301 (2011).
- ⁸É. Guazzelli and O. Pouliquen, "Rheology of dense granular suspensions," *J. Fluid Mech.* **852** (2018).
- ⁹É. Guazzelli and J. F. Morris, *A Physical Introduction to Suspension Dynamics* (Cambridge University Press, 2012).
- ¹⁰I. E. Zarraga, D. A. Hill, and D. T. Leighton Jr., "The characterization of the total stress of concentrated suspensions of noncolloidal spheres in Newtonian fluids," *J. Rheol.* **44**, 185–220 (2000).
- ¹¹T. Dbouk, L. Lobry, and E. Lemaire, "Normal stresses in concentrated non-Brownian suspensions," *J. Fluid Mech.* **715**, 239–272 (2013).
- ¹²G. Chatté, J. Comtet, A. Niguès, L. Bocquet, A. Siria, G. Ducouret, F. Lequeux, N. Lenoir, G. Ovarlez, and A. Colin, "Shear thinning in non-Brownian suspensions," *Soft Matt.* **14**, 879–893 (2018).
- ¹³R. I. Tanner, C. Ness, A. Mahmud, S. Dai, and J. Moon, "A bootstrap mechanism for non-colloidal suspension viscosity," *Rheol. Acta* **57**, 635–643 (2018).
- ¹⁴L. Lobry, E. Lemaire, F. Blanc, S. Gallier, and F. Peters, "Shear thinning in non-Brownian suspensions explained by variable friction between particles," *J. Fluid Mech.* **860**, 682–710 (2019).
- ¹⁵C. Gamonpilas, J. F. Morris, and M. M. Denn, "Shear and normal stress measurements in non-Brownian monodisperse and bidisperse suspensions," *J. Rheol.* **60**, 289–296 (2016).
- ¹⁶É. Couturier, F. Boyer, O. Pouliquen, and É. Guazzelli, "Suspensions in a tilted trough: Second normal stress difference," *J. Fluid Mech.* **686**, 26–39 (2011).
- ¹⁷D. T. Leighton Jr. and A. Acrivos, "Viscous resuspension," *Chem. Eng. Sci.* **41**, 1377–1384 (1986).

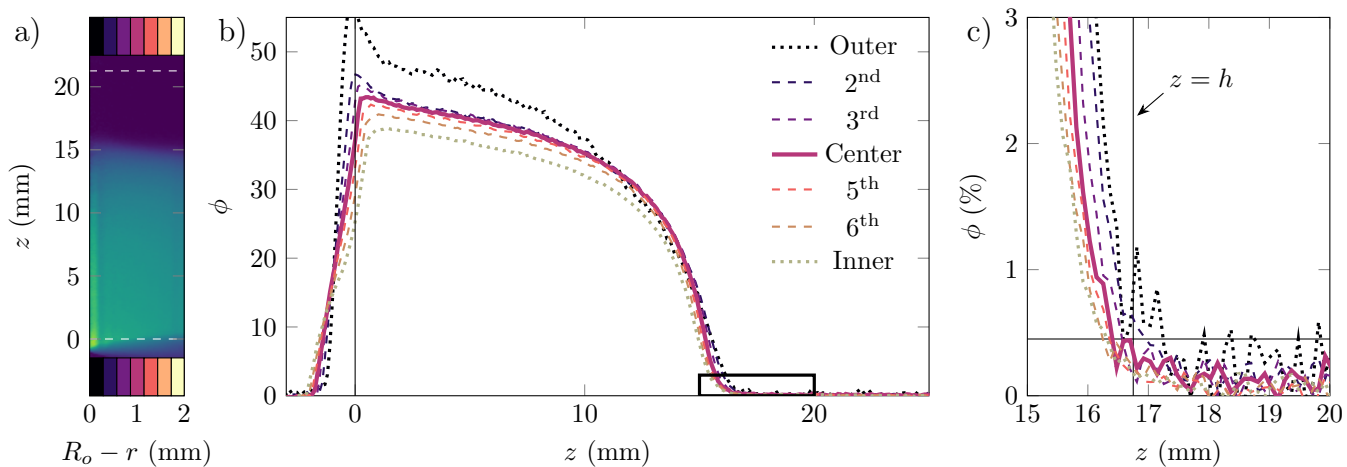
This is the author's peer reviewed, accepted manuscript. However, the online version of record will be different from this version once it has been copyedited and typeset.

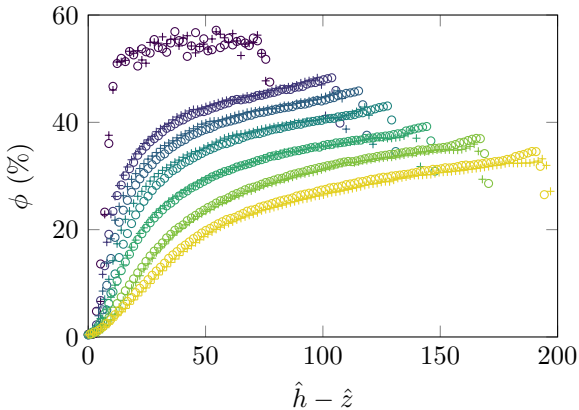
PLEASE CITE THIS ARTICLE AS DOI:10.1063/1.5103271

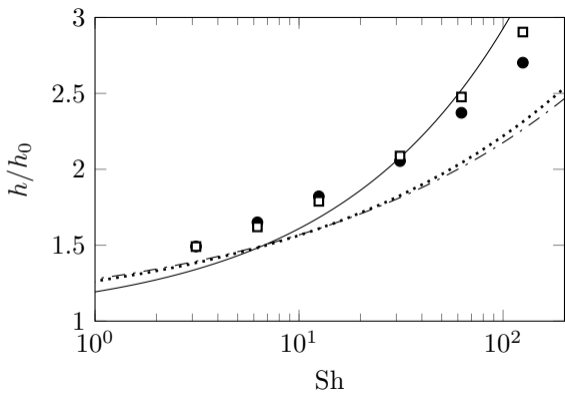
- ¹⁸A. Acrivos, R. Mauri, and X. Fan, "Shear-induced resuspension in a Couette device," *Int. J. of Multiph. Flow* **19**, 797–802 (1993).
- ¹⁹S. Deboeuf, N. Lenoir, D. Hautemayou, M. Bornert, F. Blanc, and G. Ovarlez, "Imaging non-Brownian particle suspensions with X-ray tomography: Application to the microstructure of Newtonian and viscoplastic suspensions," *J. Rheol.* **62**, 643–663 (2018).
- ²⁰M. Gholami, A. Rashedi, N. Lenoir, D. Hautemayou, G. Ovarlez, and S. Hormozi, "Time-resolved 2d concentration maps in flowing suspensions using X-ray," *J. Rheol.* **62**, 955–974 (2018).
- ²¹M. Baur, N. Uhlmann, T. Pöschel, and M. Schröter, "Correction of beam hardening in x-ray radiograms," *Review of Scientific Instruments* **90**, 025108 (2019), <https://doi.org/10.1063/1.5080540>.
- ²²J.-C. Bacri, C. Frenois, M. Hoyos, R. Perzynski, N. Rakotomalala, and D. Salin, "Acoustic study of suspension sedimentation," *Europhys. Lett.* **2**, 123 (1986).
- ²³G. Y. Onoda and E. G. Liniger, "Random loose packings of uniform spheres and the dilatancy onset," *Phys. Rev. Lett.* **64**, 2727–2730 (1990).
- ²⁴K. J. Dong, R. Y. Yang, R. P. Zou, and A. B. Yu, "Role of interparticle forces in the formation of random loose packing," *Phys. Rev. Lett.* **96**, 145505 (2006).
- ²⁵M. Jerkins, M. Schröter, H. L. Swinney, T. J. Senden, M. Saadatfar, and T. Aste, "Onset of mechanical stability in random packings of frictional spheres," *Phys. Rev. Lett.* **101**, 018301 (2008).
- ²⁶G. Ovarlez, F. Bertrand, and S. Rodts, "Local determination of the constitutive law of a dense suspension of noncolloidal particles through magnetic resonance imaging," *J. Rheol.* **50**, 259–292 (2006).
- ²⁷R. Mari, R. Seto, J. F. Morris, and M. M. Denn, "Nonmonotonic flow curves of shear thickening suspensions," *Phys. Rev. E* **91**, 052302 (2015).
- ²⁸A. Ramachandran and D. T. Leighton Jr, "Viscous resuspension in a tube: the impact of secondary flows resulting from second normal stress differences," *Physics of fluids* **19**, 053301 (2007).
- ²⁹F. Boyer, O. Pouliquen, and É. Guazzelli, "Dense suspensions in rotating-rod flows: normal stresses and particle migration," *J. Fluid Mech.* **686**, 5–25 (2011).
- ³⁰Y. Wang, R. Mauri, and A. Acrivos, "Transverse shear-induced gradient diffusion in a dilute suspension of spheres," *Journal of Fluid Mechanics* **357**, 279–287 (1998).
- ³¹F. Gadala-Maria and A. Acrivos, "Shear-induced structure in a concentrated suspension of solid spheres," *J. Rheol.* **24**, 799–814 (1980).
- ³²F. Blanc, F. Peters, and E. Lemaire, "Local transient rheological behavior of concentrated suspensions," *J. Rheol.* **55**, 835–854 (2011).
- ³³N. Y. C. Lin, B. M. Guy, M. Hermes, C. Ness, J. Sun, W. C. Poon, and I. Cohen, "Hydrodynamic and contact contributions to continuous shear thickening in colloidal suspensions," *Phys. Rev. Lett.* **115**, 228304 (2015).
- ³⁴F. Peters, G. Ghigliotti, S. Gallier, F. Blanc, E. Lemaire, and L. Lobry, "Rheology of non-Brownian suspensions of rough frictional particles under shear reversal: A numerical study," *J. Rheol.* **60**, 715–732 (2016).
- ³⁵S. H. Maron and P. E. Pierce, "Application of Ree-Eyring generalized flow theory to suspensions of spherical particles," *Journal of colloid science* **11**, 80–95 (1956).
- ³⁶I. M. Krieger and T. J. Dougherty, "A mechanism for non-Newtonian flow in suspensions of rigid spheres," *Transactions of the Society of Rheology* **3**, 137–152 (1959).
- ³⁷E. D'Ambrosio, F. Blanc, F. Peters, L. Lobry, and E. Lemaire, "Viscous resuspension of non-Brownian particles: determination of the concentration profiles and particle normal stresses," [arXiv:1907.01793](https://arxiv.org/abs/1907.01793) (2019).
- ³⁸J. Richardson and W. Zaki, "Sedimentation and fluidisation: Part i," *Transactions of the Institution of Chemical Engineers* **32**, 35–53 (1954).
- ³⁹S. Jana, B. Kapoor, and A. Acrivos, "Apparent wall slip velocity coefficients in concentrated suspensions of noncolloidal particles," *J. Rheol.* **39**, 1123–1132 (1995).
- ⁴⁰B. Andreotti, Y. Forterre, and O. Pouliquen, *Granular Media: Between Fluid and Solid* (Cambridge University Press, 2013).

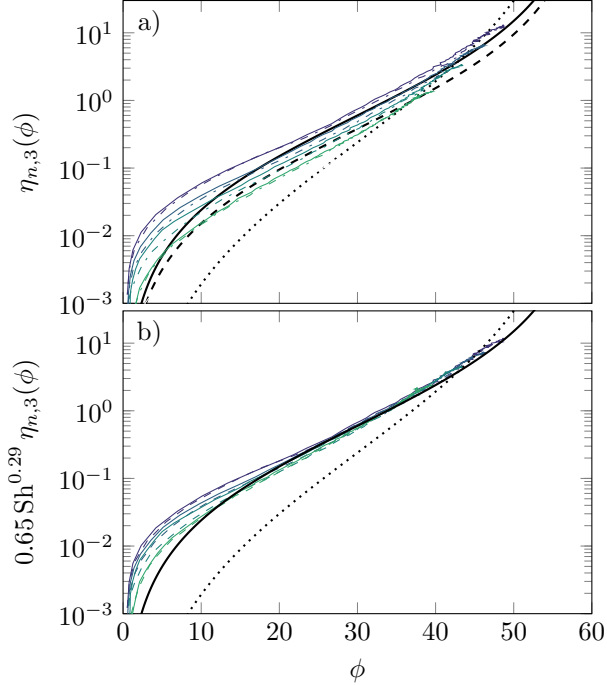


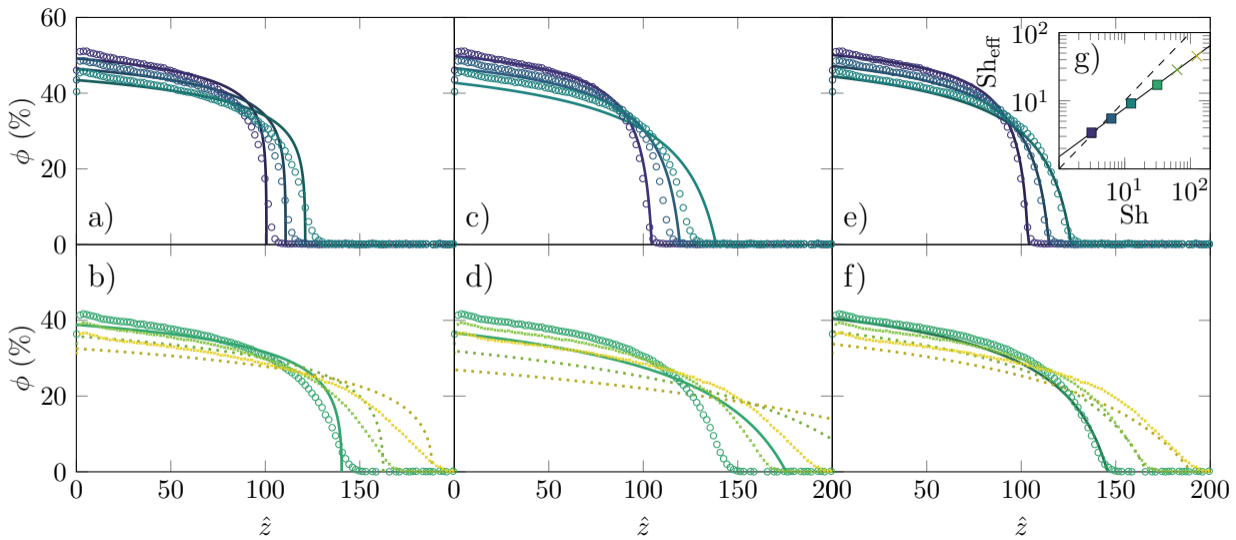


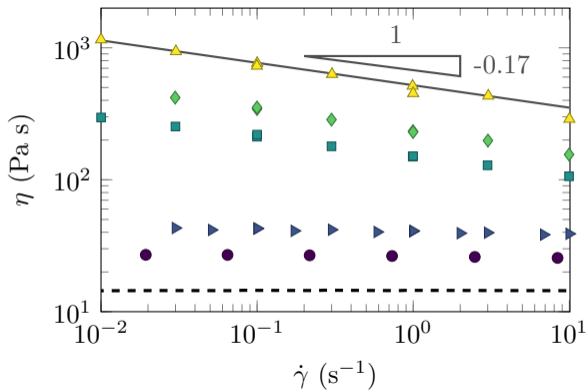


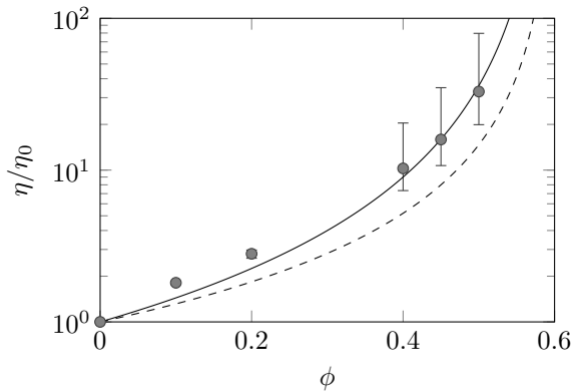


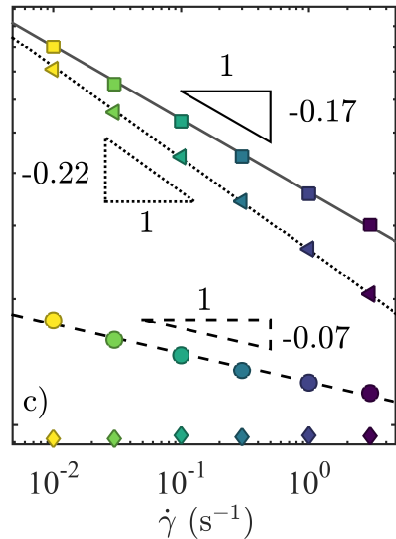
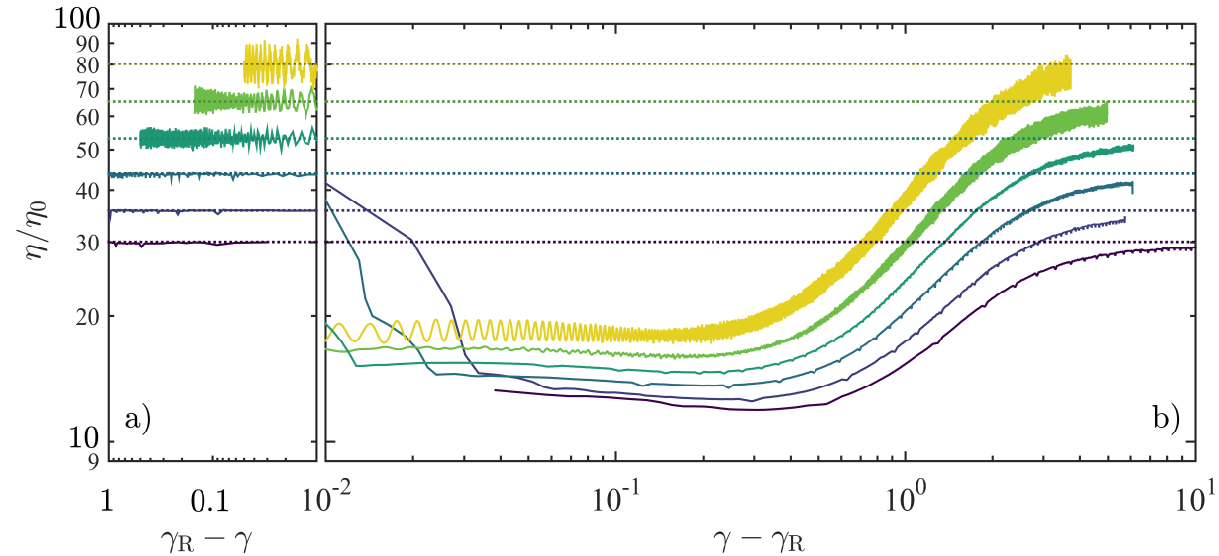


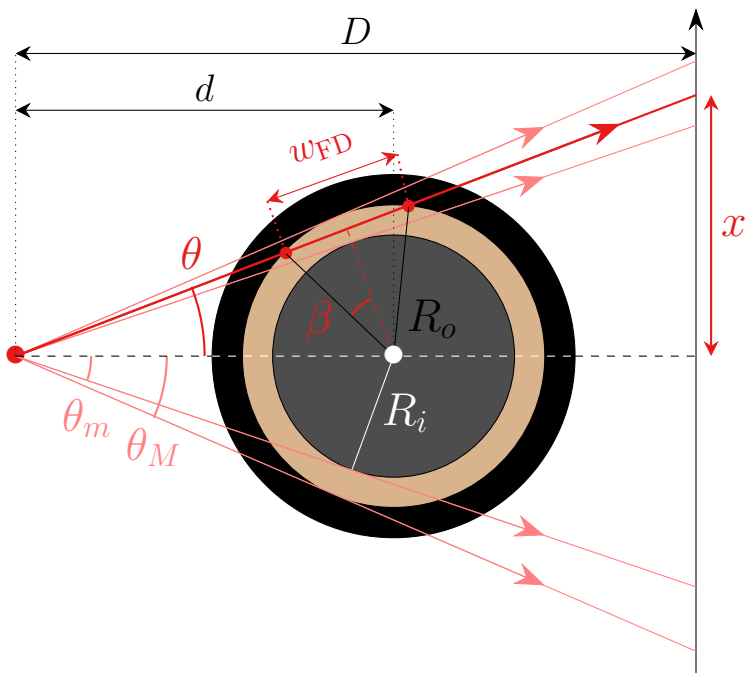


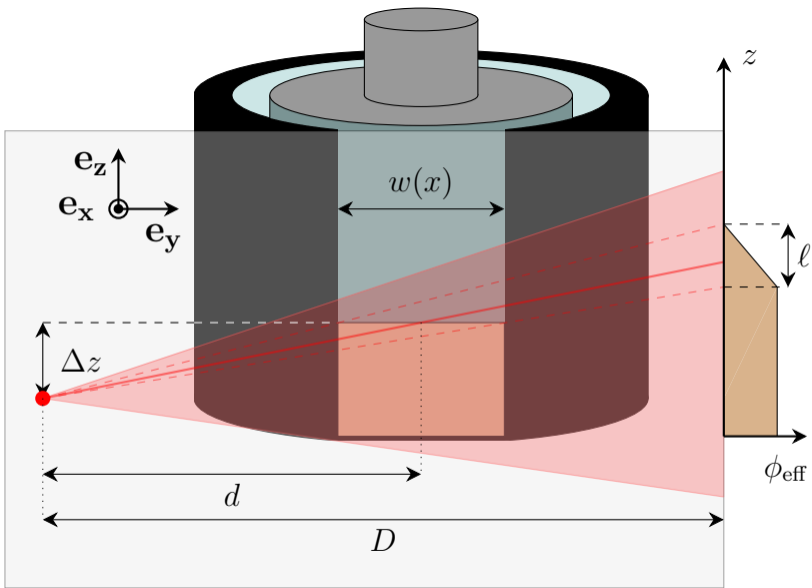


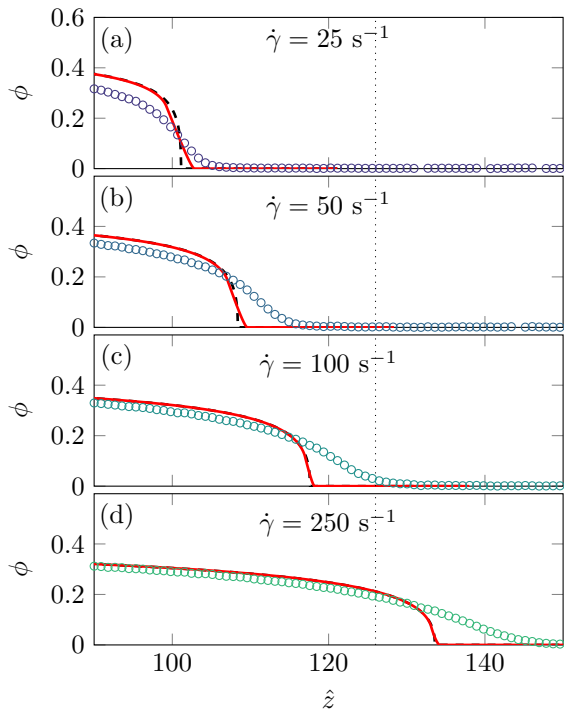












100 s^{-1} 250 s^{-1} 500 s^{-1} 1000 s^{-1} 