

Figure 1: Growth rate as a function of the susceptor temperature

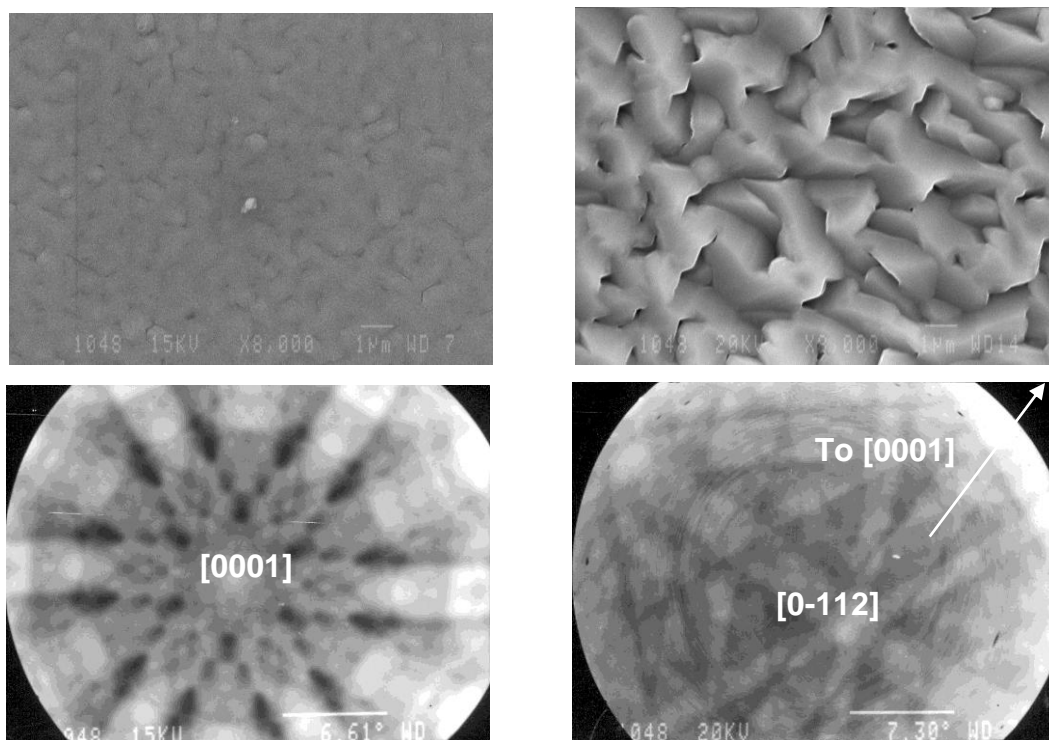


Figure 2: SEM images of ZnO/sapphire films grown in a cleaned MOCVD reactor (left) or after several runs (right) : surface morphology (up) and electron diffraction pattern (down)

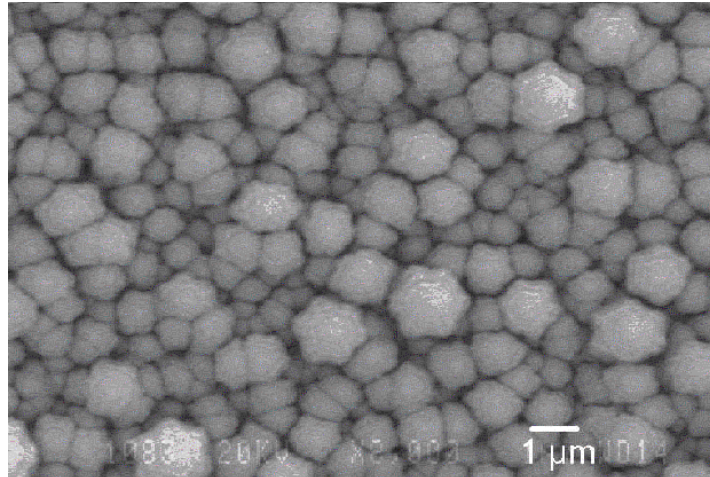


Figure 3 : surface morphology of a ZnO/sapphire epilayer grown at 330°C

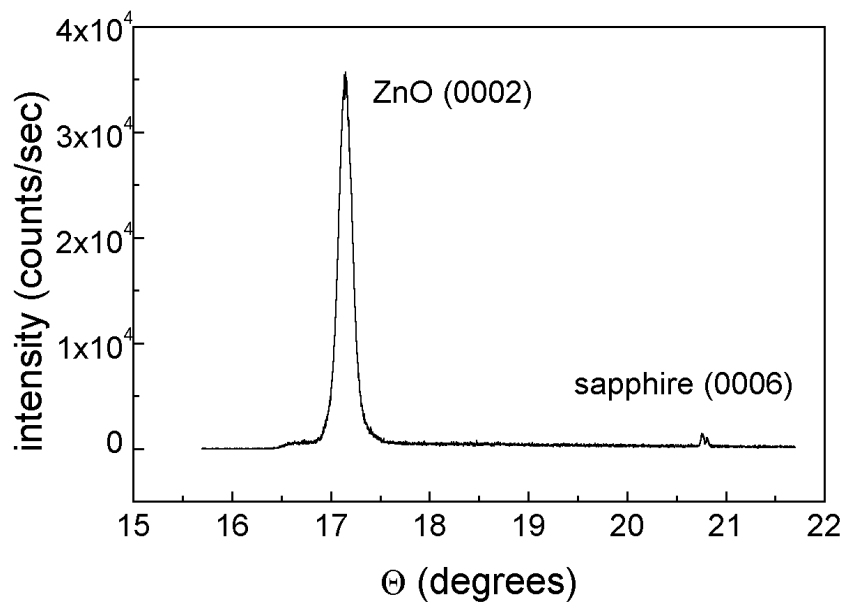


Figure 4 : X ray diffraction spectrum of ZnO grown on sapphire

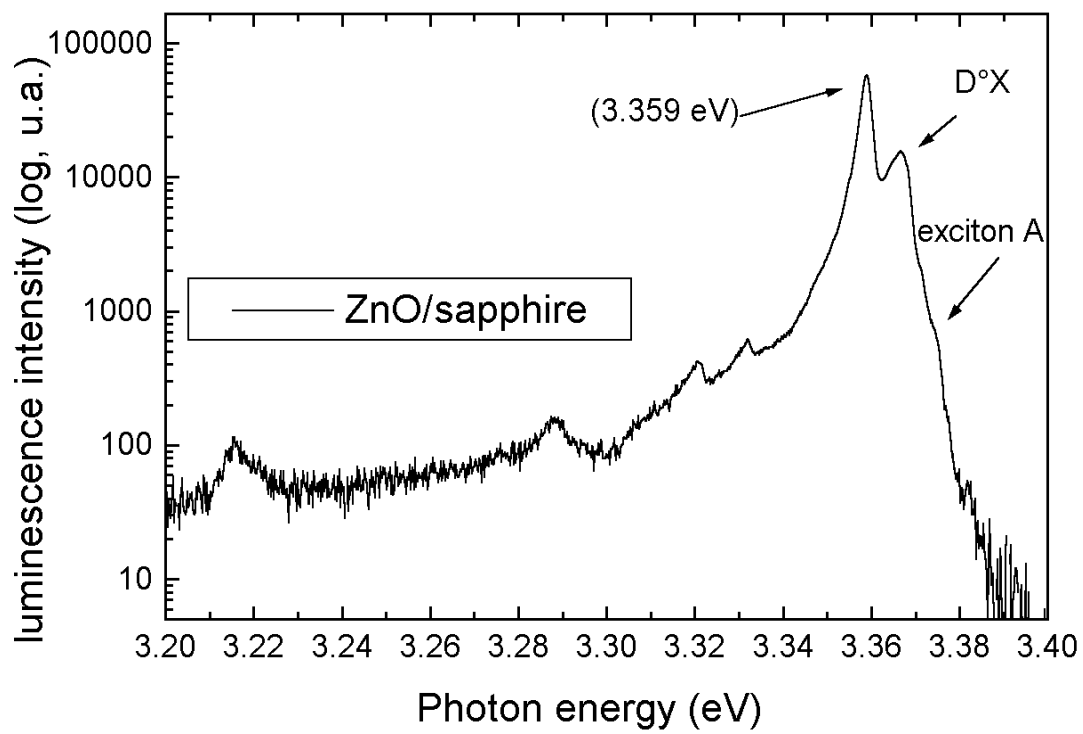


Figure 5 : low temperature (1.2K) photoluminescence spectrum of ZnO grown on (0001) sapphire