



HAL
open science

Randomised trial on clinical performances and biocompatibility of four high-flux hemodialyzers in two mode treatments: hemodialysis vs post dilution hemodiafiltration

Marion Morena, Caroline Creput, Mouloud Bouzernidj, Annie Rodriguez, Lotfi Chalabi, Bruno Seigneuric, Céline Lauret, Anne-Sophie Bargnoux, Anne-Marie Dupuy, Jean-Paul Cristol

► To cite this version:

Marion Morena, Caroline Creput, Mouloud Bouzernidj, Annie Rodriguez, Lotfi Chalabi, et al.. Randomised trial on clinical performances and biocompatibility of four high-flux hemodialyzers in two mode treatments: hemodialysis vs post dilution hemodiafiltration. *Scientific Reports*, 2019, 9 (1), pp.18265. 10.1038/s41598-019-54404-7 . hal-02397187

HAL Id: hal-02397187

<https://hal.science/hal-02397187>

Submitted on 16 Jun 2020

HAL is a multi-disciplinary open access archive for the deposit and dissemination of scientific research documents, whether they are published or not. The documents may come from teaching and research institutions in France or abroad, or from public or private research centers.

L'archive ouverte pluridisciplinaire **HAL**, est destinée au dépôt et à la diffusion de documents scientifiques de niveau recherche, publiés ou non, émanant des établissements d'enseignement et de recherche français ou étrangers, des laboratoires publics ou privés.

Randomised trial on clinical performances and biocompatibility of four high-flux hemodialyzers in two mode treatments: hemodialysis vs post dilution hemodiafiltration

Marion Morena¹, Caroline Creput³, Mouloud Bouzernidj⁴, Annie Rodriguez^{5,6}, Lotfi Chalabi⁶, Bruno Seigneuric⁷, Céline Lauret¹, Anne-Sophie Bargnoux¹, Anne-Marie Dupuy⁵ & Jean-Paul Cristol^{1,2*}

This prospective multicenter randomized comparative cross-over trial aimed at evaluating the influence of hemodialysis vs post-dilution hemodiafiltration with high-flux dialyzers in solute clearance and biocompatibility profile. 32 patients were sequentially dialyzed with Leocceed-21HX, Polypure-22S+, Rexasys-27H and VIE-21A. Primary outcome was β 2-microglobulin removal. Secondary outcomes were (i) extraction of other uremic solutes (ii) parameters of inflammation and nutrition and (iii) comparative quantification of perdialytic albumin losses (using total 'TDC' vs partial 'PDC' collection of dialysate). Significant increases in removal rates of β 2-microglobulin (84.7 ± 0.8 vs 71.6 ± 0.8 mg/L), myoglobin (65.9 ± 1.3 vs 38.6 ± 1.3 μ g/L), free immunoglobulin light chains Kappa (74.9 ± 0.8 vs 55.6 ± 0.8 mg/L), β -trace protein (54.8 ± 1.3 vs 26.8 ± 1.4 mg/L) and orosomucoid (11.0 ± 1.1 vs 6.0 ± 1.1 g/L) but not myostatin (14.8 ± 1.5 vs 13.0 ± 1.5 ng/mL) were observed in HDF compared to HD when pooling all dialyzers. Rexasys and VIE-A use in both HD and HDF subgroups was associated to a better removal of middle/large-size molecules compared to Leocceed and Polypure, except β 2-microglobulin for Rexasys. Inflammatory parameters were unchanged between dialyzers without any interaction with dialysis modality. Mean dialysate albumin loss was comparable between TDC and PDC (1.855 vs 1.826 g/session for TDC and PDC respectively). In addition, a significant difference in albumin loss was observed between dialyzers with the highest value (4.5 g/session) observed using Rexasys. Use of all dialyzers was associated with good removals of the large spectrum of uremic toxins tested and good biocompatibility profiles, with an additional gain in removal performances with HDF. Larger surface area, thinner wall and resultant very high ultrafiltration coefficient of Rexasys should be taken into account in its clear performance advantages.

Ongoing technical improvements in extrarenal therapies are achieved in order to ameliorate the long-term prognosis of chronic kidney disease dialysis patients (CKD-5D)^{1,2}. Indeed, efficacy and quality of renal replacement therapy appear among factors affecting patient mortality, the increase in middle molecule clearances ameliorating patient survival in the longer term³. Introduction of high-flux membranes first permitted an improvement in

¹PhyMedExp, Université de Montpellier, INSERM, CNRS, Département de Biochimie et Hormonologie, CHU Montpellier, Montpellier, France. ²Institut de Recherche et de Formation en Dialyse, Montpellier, France. ³Service de Néphrologie, AURA, Paris, France. ⁴Service de Néphrologie, Clinique Hemera Pays de Caux, Yvetot, France. ⁵Département de Biochimie et Hormonologie, CHU Montpellier, Université de Montpellier, Montpellier, France. ⁶AIDER, Montpellier, France. ⁷Service de Néphrologie, CHU Toulouse, Toulouse, France. *email: jp-cristol@chu-montpellier.fr

Parameter	All	HD group	HDF group
N	32	16	16
Gender, Male (%)	20 (62.5%)	9 (56.3%)	11 (68.8%)
Age (years)	72 (10); 73 [42–89]	74 (10); 76 [55–89]	69 (11); 70 [42–84]
Dry weight (kg)	73.0 (17.1); 71.8 [39.5–114.0]	69.9 (13.7); 70.5 [39.5–87.5]	76.1 (19.8); 76.0 [47.5–114.0]
BMI (kg/m ²)	26.6 (6.9); 25.3 [15.5–49.4]	26.4 (7.7); 23.6 [16.9–49.4]	26.9 (6.2); 27.0 [15.5–36.4]
Hypertension (%)	24 (75.0%)	14 (87.5%)	10 (62.5%)
Diabetes mellitus (%)	10 (31.3%)	6 (37.5%)	4 (25.0%)
Dialysis vintage (years)	4.8 (3.3); 4.4 [0.4–16.6]	5.5 (4.2); 4.7 [0.4–16.6]	4.1 (2.0); 3.6 [1.6–8.6]
Vascular access, AVF (%)	28 (87.5%)	13 (81.3%)	15 (93.8%)
Erythropoiesis stimulating agents (%)	25 (78.1%)	12 (75.0%)	13 (81.3%)
Erythropoiesis stimulating agents (IU/kg/week)	84.8 (60.6); 71.4 [15.7–231.5]	83.2 (64.1); 70.0 [15.7–231.5]	86.3 (59.7); 71.4 [23.6–210.5]
Iron injection (%)	20 (62.5%)	10 (62.5%)	10 (62.5%)
Iron injection (mg/week)	60.0 (35.4); 50.0 [20.0–100.0]	35.0 (25.8); 22.5 [20.0–100.0]	85.0 (24.2); 100.0 [50.0–100.0]
Hemoglobin (g/dL)	11.5 (1.2); 11.5 (8.9–14.2)	11.6 (1.4); 11.6 (8.9–14.2)	11.5 (1.0); 11.4 (9.8–13.7)
Hematocrit (%)	35.4 (3.8); 35.2 (27.0–44.9)	35.7 (4.5); 35.3 (27.0–44.9)	35.0 (3.1); 35.2 (29.9–42.7)
Transthyretin (g/L)	0.31 (0.08); 0.32 (0.14–0.46)	0.29 (0.08); 0.30 (0.14–0.46)	0.32 (0.06); 0.33 (0.22–0.45)
Leukocytes (G/L)	6.5 (2.1); 6.1 (3.8–14.5)	7.2 (2.6); 6.4 (4.3–14.5)	5.8 (1.3); 5.4 (3.8–8.3)
Inorganic phosphates (mmol/L)	1.5 (0.4); 1.4 (0.6–2.3)	1.4 (0.3); 1.4 (0.6–1.9)	1.6 (0.4); 1.6 (0.9–2.3)
C reactive protein (mg/L)	12.4 (22.3); 4.7 (0.6–100.4)	21.1 (29.4); 9.0 (0.8–100.4)	3.7 (2.3); 3.0 (0.6–7.4)

Table 1. Baseline characteristics of the studied population. Values were described using proportions for categorical variables and as mean (sd); median [minimum–maximum] for quantitative variables.

dialysis treatment efficiency through enhanced clearances for small and large solutes. Hemodiafiltration (HDF), a convective-based therapy combining both diffusive and convective transports⁴, has been proposed to improve dialysis outcome^{5–7} via a removal spectrum of uremic solutes (small solutes by diffusion and larger molecules with convection)⁸ with an optimized biocompatibility of the extracorporeal circuit obtained with use of ultrapure dialysate and sterile substitution fluids. To date, however, large randomized controlled trials yield conflicting results on its clinical benefits on mortality^{9–11}.

Objectives of this study were to evaluate the influence of two dialysis treatments (HD vs post-dilution HDF) with four high-flux (polysulfone or polyethersulfone) dialyzers (with membrane surface area ranging between 2.1 and 2.7 m²) (i) in the clearance evaluation for small, middle and large molecular weight substances and (ii) in the modification of several biological responses including parameters of inflammation and nutrition. In addition, a comparative quantification of per dialytic albumin losses using either a partial collection of continuous spent dialysate or the total dialysate collection was performed in a subgroup of patients.

Results

Characteristics of the patient population. Between November 2016 and June 2018, 32 CKD-5D patients assessed for eligibility in 4 French dialysis facilities were randomized and followed until their final visit at the latest in July 2018.

Main characteristics of the CKD-5D patients at baseline are listed in Table 1 and dialysis treatment parameters during follow-up are presented in Table 2.

Dialysis efficacy parameters during the follow-up (see the Methods section for calculations).

- Primary outcome (i.e. performances of b2m removal) is depicted in Table 3. Regarding *dialysis modality effect*, significantly higher reduction rate (RR) ($p < 0.001$), Kt/V ($p < 0.001$) and K simplified kinetic model (skm) ($p < 0.001$) of serum b2m were observed in HDF compared to HD mode when pooling all dialyzers. These differences observed between modes still persisted within each dialyzer tested. By contrast, b2m mass removal between modes was unchanged. Regarding *dialyzer effect*, significant differences in b2m RR ($p = 0.023$), equilibrated RR (RR-eq) ($p = 0.025$) and Kt/V ($p = 0.026$) were observed between dialyzers whatever the mode was. By contrast, no difference in Kskm and b2m mass removal was reported. In addition, Bonferroni post-hoc tests could not report differences in removal among dialyzers.
- Small solute performances with the tested dialyzers using HD and HDF are presented in Table 4. Regarding urea, HDF mode was associated with a significantly higher single pool spKt/V ($p = 0.016$),

Parameter	Leoceed 21HX				Polypure 22S+				Rexsys 27H				VIE-21A			
	HD		HDF		HD		HDF		HD		HDF		HD		HDF	
	mean	(sd)	mean	(sd)	mean	(sd)	mean	(sd)	mean	(sd)	mean	(sd)	mean	(sd)	mean	(sd)
Duration of dialysis session (h)	3.90	(0.20)	4.00	(0.00)	4.00	(0.10)	3.90	(0.20)	4.00	(0.10)	4.00	(0.10)	3.90	(0.40)	4.00	(0.00)
Blood flow (mL/min)	348.8	(35.8)	374.1	(23.8)	341.3	(35.9)	375.8	(22.9)	346.9	(39.6)	379.4	(23.6)	335.3	(34.2)	370.9	(22.3)
Dialysate flow (mL/min)	561.5	(50.6)	650.0	(51.6)	546.2	(66.0)	650.0	(51.6)	546.2	(66.0)	650.0	(51.6)	546.2	(51.9)	646.7	(51.6)
Intradialytic weight change (kg)	2.5	(3.7)	2.3	(1.0)	1.5	(1.1)	2.2	(1.3)	1.6	(1.2)	2.5	(1.2)	2.3	(1.5)	2.3	(1.2)
Convection volume (L/session)	—	—	23.8	(1.6)	—	—	24.3	(2.0)	—	—	24.6	(1.9)	—	—	22.8	(1.6)

Table 2. Characteristics of treatment according to the two groups (HD and HDF) during follow-up. Values were described using mean (sd).

Parameter	Leoceed 21HX				Polypure 22S+				Rexsys 27H				VIE-21A				ANOVA				
	HD		HDF		HD		HDF		HD		HDF		HD		HDF		Dialyzer	Mode	Dial* Mode		
	mean	(sd)	mean	(sd)	mean	(sd)	mean	(sd)	mean	(sd)	mean	(sd)	mean	(sd)	mean	(sd)					
RR (%)	70.9	(1.5)	84.3	(1.5)	67.6	(1.6)	83.5	(1.5)	74.0	(1.6)	85.6	(1.5)	73.9	(1.5)	85.6	(1.6)	0.023	<0.001	NS		
RR-eq (%)	57.3	(1.6)	72.1	(1.6)	54.0	(1.8)	70.9	(1.6)	60.5	(1.7)	73.6	(1.6)	59.9	(1.6)	73.6	(1.7)	0.025	<0.001	NS		
Kt/V	0.87	(0.05)	1.29	(0.05)	0.79	(0.05)	1.25	(0.05)	0.95	(0.05)	1.34	(0.04)	0.93	(0.05)	1.34	(0.05)	0.026	<0.001	NS		
K _{skm} (mL/min)	45.7	(3.4)	74.3	(3.4)	40.8	(3.8)	72.9	(3.4)	50.7	(3.5)	76.3	(3.3)	50.7	(3.4)	76.0	(3.5)	NS	<0.001	NS		
Mass (mg)	183.9	(14.9)	216.6	(14.9)	168.6	(16.5)	197.0	(14.9)	186.3	(15.4)	196.4	(14.4)	189.3	(14.9)	197.4	(15.4)	NS	NS	NS		
Parameter	Bonferroni post-hoc tests								ANOVA Mode				ANOVA Dialyzer								
					HD		HDF		Leoceed 21HX		Polypure 22S+		Rexsys 27H		VIE-21A						
RR (%)	NS								NS		NS		<0.001		<0.001		<0.001		<0.001		
RR-eq (%)	NS								NS		NS		<0.001		<0.001		<0.001		<0.001		
Kt/V	NS								NS		NS		<0.001		<0.001		<0.001		<0.001		
K _{skm} (mL/min)	—								—		—		<0.001		<0.001		<0.001		<0.001		
Mass (mg)	—								—		—		—		—		—		—		

Table 3. Primary outcome: b2m performances with the 4 tested dialyzers using HD and HDF modalities. Values were described using mean (sd). In the ANOVA column, *Dialyzer* means dialyzer effect; *Mode* means mode effect and *Dial* Mode* means Interaction between dialyzer and mode. Bonferroni post-hoc tests correspond to dialyzers effect whatever the mode was. *ANOVA Mode* corresponds to ANOVA testing dialyzers effect according to mode. *ANOVA Dialyzer* corresponds to ANOVA testing mode effects according to dialyzers. (*skm*, simplified kinetic model).

equilibrated eqKt/V (p = 0.012) and effective clearance (p = 0.013) whatever the dialyzer was. By contrast neither effect of dialyzers nor any interaction between dialyzer and mode were observed for these parameters. In addition, no significant difference in urea mass transfer was noted between modes and dialyzers. Creatinine RR (p = 0.001), effective clearance (p < 0.001) and mass transfer (p = 0.005) significantly increased in HDF modality without any dialyzer effect.

Finally, in terms of PO₄ removal, no significant differences in RR and effective clearance between modes and dialyzers were noted (data not shown).

- Performances of other middle/large-size molecules removal are presented in Table 5, Figs. 1 and 2.

Regarding *dialysis modality effect*, significantly higher RR, RR-eq and Kt/V of myoG (p < 0.001), FLC_K (p < 0.001), BTP (p < 0.001) and orosomuroid (p = 0.002) were observed in HDF compared to HD mode whatever the dialyzer was. These differences observed between modes still persist within each dialyzer tested except for orosomuroid. Finally, no significant difference in myoS removal performances was reported between modes.

Regarding *dialyzer effect*, significant differences in RR, RR-eq and Kt/V of serum myoG, FLC_K and BTP but not myoS and orosomuroid were observed between dialyzers whatever the mode was. In addition, Bonferroni post-hoc tests reported that Rexsys use was associated to a better removal of middle/large-size molecules except myoS and orosomuroid compared to Leoceed and Polypure. Its dialysis performances were comparable or even superior to VIE-A ones depending on the parameter tested: comparable for FLC_K (RR, RR-eq and Kt/V) and myoG (RR); superior for BTP (RR, RR-eq and Kt/V) and myoG (RR-eq and Kt/V).

Biocompatibility parameters during the follow-up. Impact of tested dialyzers on biocompatibility parameters using HD and HDF modalities is reported in Table 6. No significant change in pre-dialysis levels of

Parameter	Leoceed 21HX				Polypure 22S+				Rexsys 27H				VIE-21A				ANOVA		
	HD		HDF		HD		HDF		HD		HDF		HD		HDF		Dialyzer	Mode	Dial* Mode
	mean	(sd)	mean	(sd)	mean	(sd)	mean	(sd)	mean	(sd)	mean	(sd)	mean	(sd)	mean	(sd)			
(A) Urea (60 Da)																			
spKt/V	1.80	(0.09)	1.99	(0.08)	1.84	(0.09)	1.94	(0.09)	1.75	(0.10)	1.93	(0.08)	1.90	(0.09)	2.03	(0.09)	NS	0.016	NS
eqKt/V	1.56	(0.07)	1.72	(0.07)	1.59	(0.08)	1.68	(0.07)	1.52	(0.08)	1.66	(0.07)	1.63	(0.07)	1.76	(0.07)	NS	0.012	NS
Kt/V Urea skm	1.33	(0.11)	1.48	(0.11)	1.47	(0.11)	1.59	(0.11)	1.53	(0.12)	1.42	(0.11)	1.40	(0.11)	1.50	(0.11)	NS	NS	NS
RR-eq Urea (%)	73.0	(1.8)	76.5	(1.7)	75.0	(1.7)	76.9	(1.7)	74.7	(1.9)	75.4	(1.7)	74.9	(1.8)	77.1	(1.8)	NS	NS	NS
K skm Urea (mL/min)	209.8	(13.8)	249.0	(13.4)	234.1	(13.4)	265.3	(13.4)	237.6	(14.9)	239.4	(13.4)	224.9	(13.8)	251.1	(13.8)	NS	0.013	NS
Urea mass (mmol)	496.8	(78.3)	583.9	(75.8)	561.8	(78.3)	668.1	(75.8)	513.9	(84.1)	568.3	(75.8)	549.7	(78.3)	564.7	(78.3)	NS	NS	NS
(B) Creatinine (113 Da)																			
Kt/V Creatinine skm	1.00	(0.06)	1.26	(0.06)	1.00	(0.06)	1.13	(0.06)	1.11	(0.07)	1.12	(0.06)	1.04	(0.07)	1.16	(0.07)	NS	NS	NS
RR-eq Creatinine (%)	62.6	(1.7)	69.6	(1.7)	62.7	(1.7)	66.8	(1.7)	65.9	(1.9)	67.0	(1.7)	64.1	(1.8)	68.1	(1.8)	NS	0.001	NS
K skm Creatinine (mL/min)	158.1	(10.1)	214.2	(10.1)	157.0	(10.5)	193.3	(10.1)	176.8	(11.2)	189.0	(10.1)	166.9	(10.5)	190.1	(10.8)	NS	<0.001	NS
Creatinine mass ($\mu\text{mol} \times 10^{-3}$)	15.0	(1.3)	18.3	(1.3)	15.7	(1.3)	18.2	(1.3)	16.2	(1.4)	18.9	(1.3)	15.8	(1.3)	18.0	(1.4)	NS	0.005	NS

Table 4. Small solute performances with the 4 tested dialyzers using HD and HDF modalities. Values were described using mean (sd). In the ANOVA column, *Dialyzer* means dialyzer effect; *Mode* means mode effect and *Dial* Mode* means Interaction between dialyzer and mode. (*skm*, simplified kinetic model).

albumin and transthyretin was observed between HD and HDF groups and between all dialyzers. By contrast, pre-dialysis levels of CRP and orosomuroid were significantly lower in HDF with use of Leoceed ($p = 0.042$ for CRP only), Polypure ($p = 0.049$ and 0.026 for CRP and orosomuroid respectively), Rexsys ($p = 0.004$ for orosomuroid only) and VIE-A ($p = 0.017$ for orosomuroid only).

Regarding IL-6 and TNF- α , both pre- and post-dialysis levels remained unchanged over the study period whatever the modality or the dialyzer was.

Albumin loss with use of the four tested dialyzers. *The comparative quantification (PDC versus TDC) of albumin loss*, based on 16 comparisons reckoning concurrent PDC and TDC in 4 patients dialysed sequentially with the four different dialyzers, is depicted in the Bland–Altman bias analysis (Fig. 3). Limits of agreement with 95% confidence intervals (CI) were -1.36 to 1.30 . The deviation of dialysate albumin loss estimated using TDC vs PDC is minimal with no systematic bias. Despite the low number of subjects, the agreement may be considered as acceptable.

Mean values of dialysate albumin removal were 1.855 and 1.826 g/session for “TDC” and “PDC” respectively.

The comparative analysis of albumin loss with the four tested dialyzers using PDC method is presented in Fig. 4. Dialysate loss of albumin with post-dilution HDF was significantly lower with Polypure compared to Leoceed ($p = 0.0173$), Rexsys ($p = 0.0117$) and VIE-A ($p = 0.0180$). In addition, a significant difference was observed between Leoceed and Rexsys ($p = 0.0251$). Overall, total albumin mass was slightly removed with Polypure [median 0.6 (range 0.5 – 0.7) g] and moderately removed with Leoceed [median 1.4 (range 0.5 – 3.1) g], VIE-A [median 2.1 (range 1.4 – 3.5) g] and Rexsys [median 2.8 (range 2.1 – 4.5) g].

Discussion

CKD-5D patient survival in the long term may be improved by increasing efficacy and quality of renal replacement therapy. Among factors, treatment modality and types of dialyzer used may have a strong impact on clinical outcomes¹². Purpose of this prospective observational study thus aimed at evaluating the detailed characterization of efficacy and biocompatibility performances of four dialyzers using HD and HDF modalities. Efficacy evaluation was based on a set of small, middle- and large-sized molecules in the range 11.8 – 44 kDa. Our results confirmed the experienced superiority of HDF over HD in middle/large-sized molecule removal including b2m, myoG, FLC κ , BTP and orosomuroid whatever the dialyzer was. Dialysis performances of Rexsys were higher compared to Leoceed and Polypure but comparable or slightly above VIE-A ones depending on the tested parameters. Inflammatory parameters were unchanged between dialyzers without any interaction with dialysis modality. Dialysate albumin content in HDF was comparable using both dialysate collections. Significant differences in per dialytic losses were noted between dialyzers but the overall leaking was estimated <4.5 g/session.

Only subtle differences in removal were observed for small solutes with respect to dialysis modality, with slightly but significantly increased removal of urea and creatinine with HDF. The eqKt/V in the range 1.52 – 1.63 in HD and 1.66 – 1.76 in HDF observed here were expected since removal of small solutes mainly occurs via diffusion, the additional convection in HDF modality not affecting diffusive transport. It is generally accepted that HDF is more efficient in the removal of larger molecules. However, our results corroborate those from previous studies reporting a moderate increase in small molecules removal with HDF modality^{13,14}.

Regarding middle/larger-sized molecules, as expected, HDF was associated to improved removal performances with all tested dialyzers and among dialyzers, Rexsys and VIE-A were the most efficient ones especially

Parameter	Leoceed 21HX				Polypure 22S+				Rexsys 27H				VIE-21A				ANOVA		
	HD		HDF		HD		HDF		HD		HDF		HD		HDF		Dialyzer	Mode	Dial* Mode
	mean	(sd)	mean	(sd)	mean	(sd)	mean	(sd)	mean	(sd)	mean	(sd)	mean	(sd)	mean	(sd)			
Myoglobin (17 kDa)																			
RR (%)	31.3	(2.5)	60.5	(2.5)	25.7	(2.6)	59.5	(2.5)	53.3	(2.7)	75.0	(2.5)	44.2	(2.5)	68.5	(2.6)	<0.001	<0.001	NS
RR-eq (%)	22.9	(2.1)	47.5	(2.1)	18.4	(2.2)	46.2	(2.1)	41.1	(2.3)	61.4	(2.1)	32.6	(2.1)	55.1	(2.2)	<0.001	<0.001	NS
Kt/V	0.27	(0.04)	0.66	(0.04)	0.21	(0.04)	0.63	(0.04)	0.55	(0.04)	0.96	(0.04)	0.40	(0.04)	0.82	(0.04)	<0.001	<0.001	NS
FLCκ (22.5 kDa)																			
RR (%)	53.3	(1.7)	73.8	(1.7)	50.4	(1.7)	72.2	(1.7)	58.8	(1.7)	76.2	(1.6)	59.7	(1.7)	77.4	(1.7)	<0.001	<0.001	NS
RR-eq (%)	40.8	(1.6)	60.3	(1.6)	38.2	(1.6)	58.3	(1.6)	45.7	(1.6)	62.7	(1.5)	46.1	(1.6)	64.1	(1.6)	<0.001	<0.001	NS
Kt/V	0.53	(0.03)	0.93	(0.03)	0.48	(0.03)	0.88	(0.03)	0.62	(0.03)	1.00	(0.03)	0.63	(0.03)	1.03	(0.03)	<0.001	<0.001	NS
BTP (23–29 kDa)																			
RR (%)	22.4	(2.7)	47.3	(2.7)	19.3	(2.8)	45.0	(2.7)	35.2	(2.8)	67.7	(2.6)	30.2	(2.7)	59.1	(2.8)	<0.001	<0.001	NS
RR-eq (%)	16.2	(2.1)	35.7	(2.1)	13.8	(2.2)	33.7	(2.1)	26.0	(2.2)	54.0	(2.1)	21.7	(2.1)	46.2	(2.2)	<0.001	<0.001	NS
Kt/V	0.19	(0.03)	0.45	(0.03)	0.15	(0.03)	0.42	(0.03)	0.31	(0.03)	0.78	(0.03)	0.25	(0.03)	0.63	(0.03)	<0.001	<0.001	NS
Myostatin (12–40 kDa)																			
RR (%)	14.8	(3.0)	15.0	(3.0)	11.9	(3.1)	17.4	(3.0)	7.6	(3.1)	11.9	(2.9)	17.6	(3.0)	14.8	(3.1)	NS	NS	NS
RR-eq (%)	10.7	(2.1)	10.7	(2.1)	8.5	(2.2)	12.5	(2.1)	5.3	(2.2)	8.5	(2.1)	12.4	(2.1)	10.5	(2.2)	NS	NS	NS
Kt/V	0.12	(0.03)	0.12	(0.03)	0.09	(0.03)	0.14	(0.03)	0.06	(0.03)	0.10	(0.02)	0.14	(0.03)	0.11	(0.03)	NS	NS	NS
Orosomucoïd (44 kDa)																			
RR (%)	5.4	(2.1)	10.6	(2.1)	3.8	(2.3)	9.2	(2.1)	6.8	(2.2)	11.4	(2.1)	7.9	(2.1)	12.6	(2.2)	NS	0.002	NS
RR-eq (%)	3.9	(1.5)	7.5	(1.5)	2.7	(1.6)	6.5	(1.5)	4.7	(1.6)	8.1	(1.5)	5.5	(1.5)	8.9	(1.6)	NS	0.002	NS
Kt/V	0.05	(0.02)	0.08	(0.02)	0.03	(0.02)	0.07	(0.02)	0.05	(0.02)	0.09	(0.02)	0.06	(0.02)	0.10	(0.02)	NS	0.003	NS
Parameter	Bonferroni post-hoc tests								ANOVA Mode				ANOVA Dialyzer						
									HD		HDF		Leoceed 21HX		Polypure 22S+		Rexsys 27H		VIE-21A
Myoglobin (17 kDa)																			
RR (%)	Rexsys, VIE-A > Leoceed, Polypure								<0.001	<0.001	<0.001	<0.001	<0.001	<0.001	<0.001	<0.001	<0.001	<0.001	<0.001
RR-eq (%)	Rexsys > VIE-A > Leoceed, Polypure								<0.001	<0.001	<0.001	<0.001	<0.001	<0.001	<0.001	<0.001	<0.001	<0.001	
Kt/V	Rexsys > VIE-A > Leoceed, Polypure								<0.001	<0.001	<0.001	<0.001	<0.001	<0.001	<0.001	<0.001	<0.001	<0.001	
FLCκ (22.5 kDa)																			
RR (%)	Rexsys, VIE-A > Leoceed, Polypure								0.008	0.006	<0.001	<0.001	<0.001	<0.001	<0.001	<0.001	<0.001	<0.001	
RR-eq (%)	Rexsys, VIE-A > Leoceed, Polypure								0.011	0.005	<0.001	<0.001	<0.001	<0.001	<0.001	<0.001	<0.001	<0.001	
Kt/V	Rexsys, VIE-A > Leoceed, Polypure								0.011	0.004	<0.001	<0.001	<0.001	<0.001	<0.001	<0.001	<0.001	<0.001	
BTP (23–29 kDa)																			
RR (%)	Rexsys > VIE-A > Leoceed, Polypure								0.003	<0.001	<0.001	<0.001	<0.001	<0.001	<0.001	<0.001	<0.001	<0.001	
RR-eq (%)	Rexsys > VIE-A > Leoceed, Polypure								0.003	<0.001	<0.001	<0.001	<0.001	<0.001	<0.001	<0.001	<0.001	<0.001	
Kt/V	Rexsys > VIE-A > Leoceed, Polypure								0.004	<0.001	<0.001	<0.001	<0.001	<0.001	<0.001	<0.001	<0.001	<0.001	
Myostatin (12–40 kDa)																			
RR (%)	—								—	—	—	—	—	—	—	—	—	—	—
RR-eq (%)	—								—	—	—	—	—	—	—	—	—	—	—
Kt/V	—								—	—	—	—	—	—	—	—	—	—	—
Orosomucoïd (44 kDa)																			
RR (%)	—								—	—	NS	NS	NS	NS	NS	NS	NS	NS	NS
RR-eq (%)	—								—	—	NS	NS	NS	NS	NS	NS	NS	NS	NS
Kt/V	—								—	—	NS	NS	NS	NS	NS	NS	NS	NS	NS

Table 5. Other middle and large molecule performances with the 4 tested dialyzers using HD and HDF modalities. Values were described using mean (sd). In the ANOVA column, *Dialyzer* means dialyzer effect; *Mode* means mode effect and *Dial * Mode* means Interaction between dialyzer and mode. Bonferroni post-hoc tests correspond to dialyzers effect whatever the mode was. *ANOVA Mode* corresponds to ANOVA testing dialyzers effect according to mode. *ANOVA Dialyzer* corresponds to ANOVA testing mode effects according to dialyzers. (*BTP*, β Trace Protein; *FLCκ*, Free Light Chain kappa).

in myoG, FLCκ and BTP removal. These differences observed may be attributable to the higher effective surface of Rexsys, mainly its high cut-off, and the narrowed inner diameter of fibers for VIE-A which allows to optimize internal convective transport thus increasing clearance of middle/large size molecules. In HD mode, myoG RR obtained with VIE-A were higher than those reported with FX100 and close to FXCordiax-100 as previously reported¹⁵. In the same manner, we observed excellent myoG RR with Rexsys in HD, comparable to those

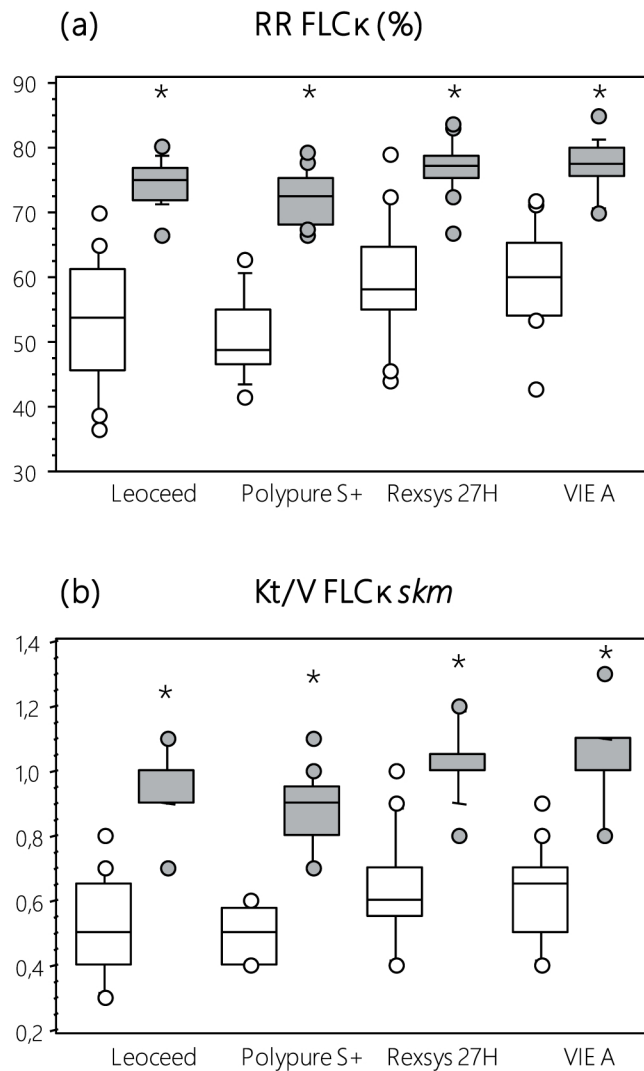


Figure 1. FLC κ performances ((a) reduction rates RR and (b) Kt/V) with the 4 tested dialyzers using HD and HDF modalities. (FLC κ , Free Light Chain kappa; RR reduction ratio; skm, simplified kinetic model). (□ HD) (■ on line HDF) (* $p < 0.001$ vs HD mode).

reported with FXCordiax-100^{15,16}. This may be due to the higher membrane surface of Rexsys (2.7 m² vs 2.2 m² for FX-Cordiax100) and the narrowed inner diameter of fibers for FXCordiax-100 (185 μ m vs 200 μ m for Rexsys). Even though HDF could improve b2m removal performances, no difference between dialyzers was observed neither in HD nor in HDF, with b2m RR close to those found with FX80¹⁷, FXCordiax-80^{17,18} and FXCordiax-100^{15,16} in HD and higher than FXCordia-100 in HDF¹⁵.

Excellent RR were observed for FLC κ removal with levels greater than 70% in HDF, even reaching 76% with Rexsys, which is higher than those previously observed with Elisio™-210H, a dialyzer whose nature of the Polynephron™ membrane and the design of the dialyzer, mainly its effective longer length, allow huge internal convection¹⁹. Of note, despite a higher molecular weight, FLC κ RR reported here are higher than myoG ones.

Regarding other large size molecules studied here, only few studies explored the removal of orosomuroid and myoS. Here, we noted a difference in orosomuroid RR between modalities but without any dialyzer effect. These levels observed in HDF represent around 10–12%. Maduell *et al.* using FXCordiax-60, with lower membrane surface (1.4 m²) but narrowed inner diameter of fibers (185 μ m) could reach similar rates but with longer time dialysis sessions²⁰. In terms of myoS, our findings could evidence removals up to 17.6% but without significant differences between modalities and between dialyzers. ELISA kit used here allows the determination of the active mature protein of myoS which can be found in the circulation either as a 12 kDa fragment (free mature protein) (25% in the circulation) or a 40 kDa fragment (75%) corresponding to a latent complex containing a disulfide-linked dimer of the mature protein and two noncovalently-associated propeptides. This should explain why only weak RR were observed here, probably attributable to the predominant 40 kDa form of myoS present in the circulation. Interestingly, Esposito *et al.*, using the same ELISA kit (R&D Systems) could report decreased pre-dialysis levels of myoS after moving from a 3 month-HD period to a 3 month-HDF period but in only 10 patients²¹.

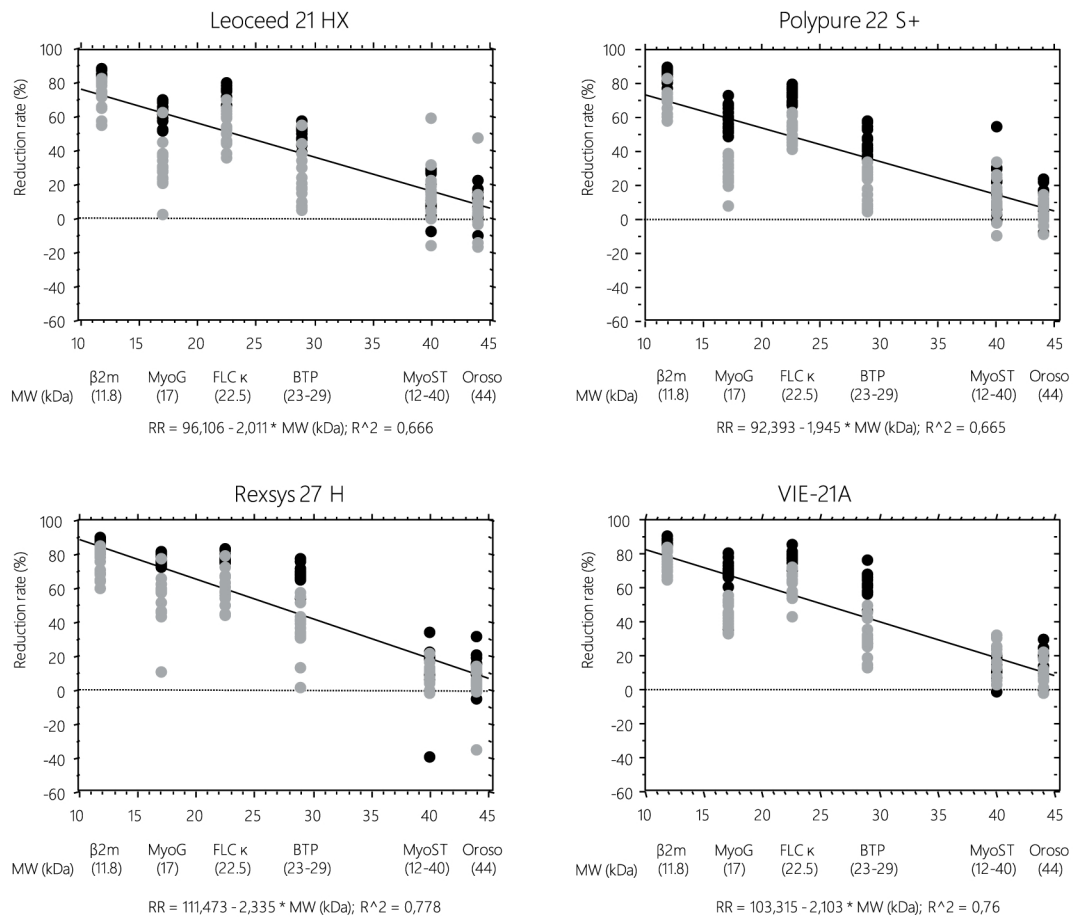


Figure 2. Correlations of the extent of medium molecule removal (reduction rates, %) to their molecular weight with HD or on line HDF technique using the four tested dialyzers. (*β2m*, beta2 microglobulin; *MyoG*, myoglobin; *FLCκ*, Free Light Chain kappa; *BTP*, Beta trace Protein; *MyoST*, myostatin; *Oroso*, orosomucoid). (□ HD) (■ on line HDF).

Our findings validate the partial dialysate collection by direct dialysate quantification of per dialytic albumin losses. This PDC appears as a reliable technique reflecting albumin losses in TDC and may be considered as a suitable method to determine total dialysate content of any solute. In our study, it must be underlined that along with their efficacy performances on middle/large-sized molecule removal, all tested dialyzers did not cause dramatic albumin leaking with HDF treatment. Indeed, even though we noted significant differences between dialyzers, with a higher amount of albumin leaking using Rexsys, the mean level did not exceed 2.8 g/3–4 hour-treatment, which corresponds to acceptable amounts in HDF compared to other studies^{22,23}. These levels are even lower than some reported with HD, as observed by Kirsch *et al.* with up to 7.3 g/session of albumin leaking using middle cut-off membranes¹⁸. Nevertheless, the amount of albumin loss during dialysis that is clinically acceptable in the long term still needs investigations all the more so because the main cause of low serum albumin levels in hypoalbuminemic dialysis patients is decreased albumin synthesis rather than per dialytic losses^{24,25}.

Lack of cellular reactivity with inflammatory parameters observed with all dialyzers attests to their high biocompatibility level. Indeed, it is noteworthy that all the tested parameters were not modified during the sessions performed with both techniques which clearly shows the excellent biocompatibility profile achieved with today's dialysis procedure²⁶, all the more with HDF wherein high volumes of reinfusion liquid are performed²⁷.

The major limitation of this study is the acute conditions of the design which not allowed to address whether use of these dialyzers in HDF mode was superior to HD in terms of clinical outcomes. In addition, before enrolment, the patients were treated with HDF or HD and no run-in was planned. This may explain the differences observed between study populations at inclusion and during the study in terms of inflammatory markers. Given the short term of the study, therefore a carry-over effect cannot be ruled out. Finally, patients in the HDF group had significantly higher blood and dialysate flow rates which let suggest increased treatment performances with this mode. However, instantaneous clearance curve of small solute and larger molecules reaches a steady state around 350 mL/min for blood flow and 500 mL/min for dialysate flow both in HD and HDF modalities²⁸. Therefore, only a moderate effect could be attributed to this difference.

In conclusion, use of the different tested dialyzers was associated with a good removal of the large spectrum of uremic toxins tested (higher performances being obtained with Rexsys and VIE-A dialyzers) and an excellent biocompatibility profile allowing their safe use for both modalities. Larger surface area, thinner wall and resultant very high ultrafiltration coefficient of Rexsys should be taken into account in its clear performance advantages.

Parameter	Leocceed 21HX				Polypure 22S+				Rexsys 27H				VIE-21A				ANOVA		
	HD		HDF		HD		HDF		HD		HDF		HD		HDF		Dialyzer	Mode	Dial* Mode
	mean	(sd)	mean	(sd)	mean	(sd)	mean	(sd)	mean	(sd)	mean	(sd)	mean	(sd)	mean	(sd)			
Albumin (g/L)	36.1	(0.8)	38.5	(0.8)	38.0	(0.8)	37.6	(0.8)	37.1	(0.8)	37.8	(0.8)	36.2	(0.8)	37.9	(0.8)	NS	NS	NS
Transthyretin (g/L)	0.298	(0.020)	0.321	(0.020)	0.310	(0.020)	0.314	(0.020)	0.333	(0.021)	0.315	(0.020)	0.307	(0.020)	0.320	(0.021)	NS	NS	NS
CRP (mg/L)	23.7	(8.6)	6.8	(8.6)	11.2	(8.6)	4.2	(8.6)	11.4	(8.9)	3.6	(8.3)	29.9	(8.6)	11.5	(8.9)	NS	0.042	NS
Orosomucoid (g/L)	1.37	(0.09)	1.05	(0.09)	1.20	(0.09)	0.98	(0.09)	1.24	(0.09)	0.96	(0.09)	1.36	(0.09)	0.98	(0.09)	NS	<0.001	NS
IL-6 (Pre) (pg/mL)	9.8	(2.0)	5.5	(2.0)	4.3	(2.0)	3.9	(2.0)	5.1	(2.0)	3.6	(1.9)	9.4	(2.0)	5.4	(2.0)	NS	NS	NS
IL-6 (Post) (pg/mL)	9.9	(1.8)	6.2	(1.8)	4.6	(1.8)	3.7	(1.8)	3.6	(1.9)	3.1	(1.7)	7.4	(1.8)	4.3	(1.8)	NS	NS	NS
TNF- α (Pre) (pg/mL)	29.3	(1.9)	29.5	(1.9)	28.6	(1.9)	27.6	(1.9)	28.5	(2.0)	25.3	(1.9)	28.9	(1.9)	27.9	(2.0)	NS	NS	NS
TNF- α (Post) (pg/mL)	13.0	(1.3)	11.9	(1.3)	12.9	(1.4)	11.8	(1.3)	13.0	(1.4)	11.0	(1.3)	14.0	(1.4)	10.6	(1.4)	NS	NS	NS

Table 6. Biocompatibility parameters with the 4 tested dialyzers using HD and HDF modalities. Values were described using mean (sd). In the ANOVA column, *Dialyzer* means dialyzer effect; *Mode* means mode effect and *Dial*Mode* means Interaction between dialyzer and mode.

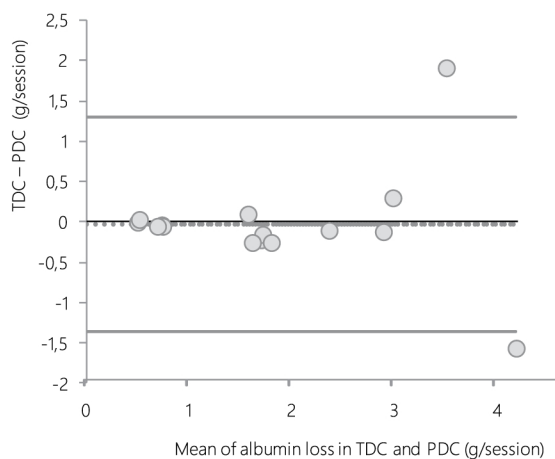


Figure 3. Bland & Altman bias plot for albumin loss measured from direct dialysis quantification using total (TDC) and partial (PDC) spent dialysate collection. For technical reasons, this comparative quantification was evaluated in only half of the patients from center 1 (n = 4). Dotted line represents the mean difference and solid lines represent 95% limits of agreement. All values are expressed in g/session.

Methods

Ethical approval. All procedures performed in this study involving human participants were in accordance with the ethical standards of the institutional and/or national research committee and with the 1964 Helsinki declaration and its later amendments or comparable ethical standards.

Study design, dialyzers and dialysis conditions. This study was a prospective multicenter randomized comparative cross-over trial (ClinicalTrials.gov Identifier: NCT03262272; first posted 25/08/2017), registered at “Ministère Santé et Solidarités” after approval by the Marseille University Hospital ethics committee. Four different dialysis facilities (AURA Paris, Yvetot clinic, AIDER clinic and Toulouse university hospital center) were involved in the study. Eligible patients were assigned to receive either post-dilution HDF (first two centers) or conventional high-flux HD (last two centers) for 4 weeks. During this period, all patients were sequentially dialyzed with 4 different dialyzers (one/week, the two first sessions of the week; the last session of the week being performed with the patient’s own dialyzer and used as a wash out session): Leocceed 21HX, Polypure 22S+, Rexsys 27H and VIE-21A (Table 7). The sequence of dialyzers use was randomly assigned: per center, device \times week allocation scheme was generated by random permutation of a block of 4 (computer generation). All patients in a given center followed the scheme allocated to this center. (Fig. 5). The randomization sequence was centralized and computed by the statistician.

Dialysis conditions remained unchanged for each patient: 3 sessions/week, 3–4 hours/session, blood flow (QB) of 300–400 mL/min, ultrapure bicarbonate buffered dialysate, dialysate flow (QD) in the range 500–700 mL/min.

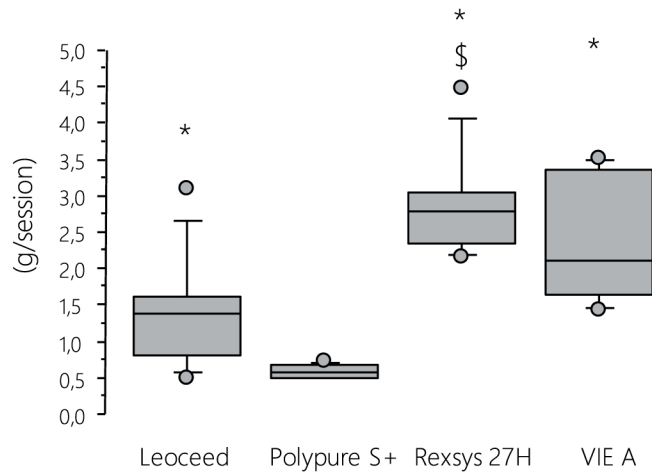


Figure 4. Dialysate loss of albumin in post-dilution HDF with the 4 tested dialyzers. Continuous partial sampling of spent dialysate with a collection pump inserted into the dialysate outlet line was carried out in all patients from center 1 during the midweek session of each four treatment phases. At the end of the session, a sample was collected after stirring and albumin determined. (*p < 0.05 vs Polypure S+; \$p < 0.05 vs Leoceed).

	Membrane	Effective surface area (m ²)	Inner diameter (μm)	Wall thickness (μm)	UF coefficient (mL/h/mm Hg)
Leoceed 21HX	polysulfone	2.1	200	35	94
Polypure 22S+	polysulfone	2.2	200	40	74
Rexsys 27H	polyethersulfone	2.7	200	30	124
VIE-21A	vitamin E-coated polysulfone	2.1	185	45	89

Table 7. Characteristics of the membranes in the tested dialyzers.

On-line production of clean dialysate and ultrapure substitution fluid was performed in both modalities. HDF was performed in post-dilution mode with a minimum convective volume of 20 L^{29,30}. The ultrafiltration flow rate (QUF) was set according to each individual patient's interdialytic weight gain. The routine anticoagulation protocol was unchanged for each patient.

Primary outcome measure of the study was the removal of β₂-microglobulin (b₂m). Secondary outcome measures were (i) the extraction of other uremic solutes including myoglobin (myoG), free immunoglobulin light chains Kappa (FLC_K), β₂-trace protein (BTP), myostatin (myoS), glycoprotein orosomucoid, urea, creatinine and phosphates (PO₄), (ii) parameters of inflammation (CRP, TNF-α, IL-6), nutrition (albumin, transthyretin) and (iii) a comparative quantification of perdialytic albumin losses.

Informed consent was obtained from all individual participants.

Patients. Thirty-two hemodialysis patients (n = 8 per center) were enrolled in the study by their nephrologists after having fulfilled the following inclusion criteria: adult patient with CKD, dialyzed for at least one month with high permeability and high surface area (≥ 1,8 m²) dialyzer and treated with the mode to be tested (HD or post-dilution HDF); with a minimum convective volume of 20 L in post-dilution HDF; with vascular access allowing a minimum blood flow rate of 300 mL/min; informed of the study goals and having signed the written informed consent.

Non inclusion criteria were as follows: patient with a fast progressive acute/chronic disease; with uncontrolled anemia; pregnant or nursing patient.

No run-in period before entering in the active study phase was performed.

Blood sample collection and laboratory measurements. Blood samples were drawn weekly during the midweek dialysis session from the arterial line before and after dialysis.

Routine laboratory analyses including serum urea, creatinine and PO₄ (all being evaluated pre- and post-dialysis) were locally performed. Specific biomarkers including serum b₂m, myoG, FLC_K, BTP, myoS, orosomucoid, CRP, TNF-α, IL-6, albumin, transthyretin were performed on samples collected weekly, centrifuged, aliquoted, frozen and further analyzed in a central laboratory.

Serum b₂m, orosomucoid, high sensitive CRP, albumin and transthyretin were determined by immunoturbidimetry (Cobas 8000, Roche Diagnostics, Meylan, France). MyoG was measured by electrochemiluminescence immunoassay (Cobas 8000, Roche Diagnostics, Meylan, France). FLC_K and BTP were evaluated using

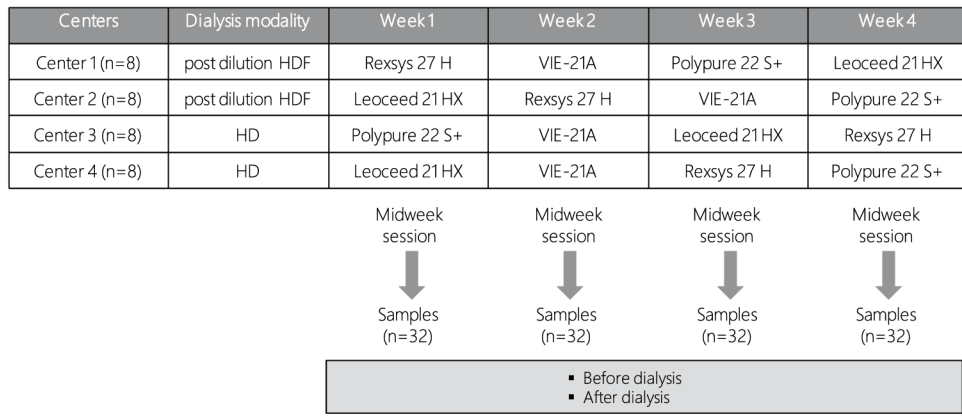


Figure 5. Study design and sequences of randomization per center. In this prospective multicenter randomized comparative cross-over trial in two parallel arms, HD vs on line HDF, all the patients were sequentially dialyzed with four different dialyzers (one/week): Leocceed 21HX, Polypure 22S+, Rexsys 27H and VIE-21A.

latex-enhanced immunonephelometry (Siemens Healthcare Diagnostics Products, Marburg, Germany). MyoS, TNF- α and IL-6 were measured by enzyme-linked immunosorbent assay (myoS: R&D Systems Europe, Lille, France; TNF- α /IL-6: ThermoFisher Scientific, Courtabouef, France).

Dialysate sample collection and albumin measurement. A comparative quantification of perdialytic albumin losses using either a “pull/push” syringe allowing to collect continuous spent sampling of dialysate (namely partial dialysate collection, “PDC”) or the total dialysate collection (namely “TDC”), which represents the gold standard method to evaluate mass balances achieved during dialysis for a given solute³¹, was performed in a subgroup of patients (i.e. center-1), all being dialyzed with post-dilution HDF (n = 8 patients for PDC and n = 4 for TDC due to the cumbersome method).

Briefly, total amount of spent dialysate with ultrafiltrate (TDC) was collected in a 200 L tank during the midweek session of each four treatment phases. At the end of the session, a 60 mL-sample was collected after a manual 8-minute stirring and sent to the laboratory for albumin determination. Regarding PDC, a continuous partial sampling of spent dialysate was carried out using a collection pump inserted into the dialysate outlet line (waste dialysate) at a sampling rate of 14.5 mL/hour for a total volume of 48 mL. The sampler was annexed to hydraulic alarms of the generator in order to avoid fresh dialysate inlet. At the end of the session, the total volume of the syringe was sent to the laboratory for albumin determination. Albumin dialysate content for TDC and PDC was assayed by immunoturbidimetric method using Beckman-Coulter AU5800 analyzer (Villepinte, France).

Calculations.

- *Dialysis dose delivered for urea* was calculated using single pool (sp)³² and equilibrated (eq)³³ Kt/V according to following Daugirdas formulas:

$$\text{sp Kt/V} = -\text{Ln}([\text{urea}_{\text{post}}]/[\text{urea}_{\text{pre}}]) - 0.008 * \text{tHD} \\ + ((4 - 3.5 * [\text{urea}_{\text{post}}]/[\text{urea}_{\text{pre}}])(\text{BW}_{\text{pre}} - \text{BW}_{\text{post}})/\text{BW}_{\text{post}}))$$

$$\text{eq Kt/V} = \text{sp Kt/V} - (0.6 * \text{sp Kt/V}/\text{tHD}) + 0.03$$

where *sp* is single pool, *pre* and *post* correspond to pre- and post-treatment conditions respectively, tHD is time on dialysis in hours, [urea] is urea concentration in mmol/L and BW is Body Weight in kg.

- *Reduction rates* of different solutes were calculated according to the following equation:

$$\text{RR} (\%) = (C_{\text{pre}} - C_{\text{post}})/C_{\text{pre}} * 100$$

where C_{pre} and C_{post} are solute concentrations pre- and post-treatment respectively.

For the middle- and large-size molecules, C_{post} was corrected (cpost-corr) for hemoconcentration, using a single compartment kinetic model³⁴:

$$C_{\text{post-corr}} = C_{\text{post}}/(1 + \Delta\text{BW}/(0, 2 * \text{BW post}))$$

where ΔBW is the difference between pre and post-treatment body weights (BW).

- *Equilibrated reduction rates* of different solutes were calculated according to the following equation:

$$\text{RR-eq} (\%) = (C_{\text{pre}} - C_{\text{post-eq}})/C_{\text{pre}} * 100$$

where $C_{\text{post-eq}}$ corresponds to post-treatment concentration corrected for solute compartment disequilibrium according to Tattersall formula³⁵:

$$C_{\text{post-eq}} = C_{\text{pre}} * (C_{\text{post}}/C_{\text{pre}})^{(t_{\text{HD}}/t_{\text{HD}+X})}$$

where X corresponds to the equilibration time and equals to 35 and 50 for urea and creatinine respectively.

For the middle- and large size molecules, the following formula considering an equilibration time of 110 was applied³⁶.

- Kt/V for all solutes was calculated using simplified kinetic model (skm) according to the following equation:

$$Kt/V \text{ solute} = \text{Ln}(C_{\text{pre}}/C_{\text{post-eq}})$$

- *Effective clearances for solutes* were calculated according to the following equation:

$$K \text{ skm solute} = \text{Ln}(C_{\text{pre}}/C_{\text{post-eq}}) * V/t_{\text{HD}}$$

where V corresponds to the volume of distribution for solutes and was calculated using the Chertow total body water (TBW) formula³⁷ as follows:

V = averaged Total Body Water (TBW) for urea and creatinine

V = One third of averaged TBW for middle- and large-size molecules

with averaged TBW = (TBW + (TBW - ΔBW))/2

- *Solute mass removal* during the sessions was estimated using the following formula:

$$\text{Mass solute} = K \text{ solute} * 0,001 * \text{TAC solute} * t_{\text{HD}}$$

where TAC is time average concentration of the solute and equals to:

$$\text{TAC solute} = (C_{\text{pre}} - C_{\text{post-corr}}) / \text{Ln}(C_{\text{pre}} - C_{\text{post-corr}})$$

- *Total mass of albumin loss* was detected in dialysate (from PDC or TDC) according to the following equation:

$$\text{Albumin loss} = C_{\text{albumin}} * Q_{\text{D}} * t_{\text{HD}}$$

where Q_{D} represents dialysate flow and C_{albumin} the dialysate concentration of albumin. Total dialysate flow (Q_{D}) includes ultrafiltration rate.

Statistical analyses. Qualitative variables were expressed as number (percentages). Quantitative variables were expressed as mean (standard deviation, sd); median [min-max].

The differences between dialyzers and dialysis modalities were tested by two-way analysis of variance (ANOVA) after normality and equal variance were tested. When initial ANOVA indicated significant differences between the studied groups, post-hoc tests of multiple comparisons were performed for dialyzers effect whatever the mode was (p-values adjusted following the Bonferroni's method).

Regarding the comparative quantification of dialysate albumin loss, a scatter of differences was visualized according to the Bland-Altman representation. Mean and limits of agreement, defined as mean ± 1.96 sd were computed.

Wilcoxon non parametric signed rank tests were used to test differences in dialysate albumin loss (with PDC only) within the subgroup of patients with use of the 4 dialyzers in post-dilution HDF.

Values were considered statistically significant at $p < 0.05$. All analyses were carried out with Statistical Package for Social Sciences version 18.0 (IBM Inc, USA).

References

1. KDOQI Clinical practice guideline for hemodialysis adequacy: 2015 Update. *Am J Kidney Dis* **66**, 884–930 (2015).
2. Palmer, S. *et al.* High-flux versus low-flux membranes for end-stage kidney disease. *Cochrane Database Syst Rev*. **12**, 1–115 (2012).
3. Okuno, S. *et al.* Serum beta2-microglobulin level is a significant predictor of mortality in maintenance haemodialysis patients. *Nephrol Dial Transplant* **24**(Feb), 571–577 (2009).
4. Canaud, B. Online hemodiafiltration. Technical options and best clinical practices. *Contrib Nephrol* **158**, 110–122 (2007).
5. Canaud, B., Chenine, L., Henriet, D. & Leray, H. Online hemodiafiltration: a multipurpose therapy for improving quality of renal replacement therapy. *Contrib Nephrol* **161**, 191–198 (2008).
6. Canaud, B. Effect of online hemodiafiltration on morbidity and mortality of chronic kidney disease patients. *Contrib Nephrol* **158**, 216–224 (2007).
7. Peters, S. A. *et al.* Haemodiafiltration and mortality in end-stage kidney disease patients: a pooled individual participant data analysis from four randomized controlled trials. *Nephrol Dial Transplant* **31**(Jun), 978–984 (2016).
8. Krieter, D. H. *et al.* Clinical cross-over comparison of mid-dilution hemodiafiltration using a novel dialyzer concept and post-dilution hemodiafiltration. *Kidney Int* **67**, 349–356 (2005).
9. Grooteman, M. P. *et al.* Effect of online hemodiafiltration on all-cause mortality and cardiovascular outcomes. *J Am Soc Nephrol* **23**, 1087–1096 (2012).
10. Ok, E. *et al.* Mortality and cardiovascular events in online haemodiafiltration (OL-HDF) compared with high-flux dialysis: results from the Turkish OL-HDF Study. *Nephrol Dial Transplant* **28**, 192–202 (2013).

11. Maduell, F. *et al.* High-efficiency postdilution online hemodiafiltration reduces all-cause mortality in hemodialysis patients. *J Am Soc Nephrol* **24**, 487–497 (2013).
12. Abe, M., Hamano, T., Wada, A., Nakai, S. & Masakane, I. Effect of dialyzer membrane materials on survival in chronic hemodialysis patients: Results from the annual survey of the Japanese Nationwide Dialysis Registry. *PLoS One* **12**, e0184424 (2017).
13. Canaud, B. *et al.* Evaluation of high-flux hemodiafiltration efficiency using an on-line urea monitor. *Am J Kidney Dis* **31**(jan), 74–80 (1998).
14. Maduell, F. *et al.* High-permeability alternatives to current dialyzers performing both high-flux hemodialysis and postdilution online hemodiafiltration. *Artif Organs* **30** (2019 Apr).
15. Potier, J., Queffeuilou, G. & Bouet, J. Are all dialyzers compatible with the convective volumes suggested for postdilution online hemodiafiltration? *Int J Artif Organs* **39**, 460–470 (2016).
16. Potier, J., Bowry, S. & Canaud, B. Clinical Performance Assessment of CorDiax Filters in Hemodialysis and Hemodiafiltration. *Contrib Nephrol* **189**, 237–245 (2017).
17. Lim, P. S. *et al.* Precise Quantitative Assessment of the Clinical Performances of Two High-Flux Polysulfone Hemodialyzers in Hemodialysis: Validation of a Blood-Based Simple Kinetic Model Versus Direct Dialysis Quantification. *Artif Organs* **42**, E55–E66 (2017).
18. Kirsch, A. H. *et al.* Performance of hemodialysis with novel medium cut-off dialyzers. *Nephrol Dial Transplant* **32**, 165–172 (2017).
19. Bourguignon, C. *et al.* Hemodiafiltration improves free light chain removal and normalizes kappa/lambda ratio in hemodialysis patients. *J Nephrol* **29**, 251–257 (2016).
20. Maduell, F. *et al.* Elimination of large uremic toxins by a dialyzer specifically designed for high-volume convective therapies. *Blood Purif* **37**, 125–130 (2014).
21. Esposito, P. *et al.* Modulation of Myostatin/Hepatocyte Growth Factor Balance by Different Hemodialysis Modalities. *Biomed Res Int* **2017**, 7635459 (2017).
22. Krieter, D. H. & Canaud, B. High permeability of dialysis membranes: what is the limit of albumin loss? *Nephrol Dial Transplant* **18**, 651–654 (2003).
23. Meert, N. *et al.* Comparison of removal capacity of two consecutive generations of high-flux dialyzers during different treatment modalities. *Nephrol Dial Transplant* **26**, 2624–2630 (2011).
24. Kaysen, G. A., Rathore, V., Shearer, G. C. & Depner, T. A. Mechanisms of hypoalbuminemia in hemodialysis patients. *Kidney Int* **48**, 510–516 (1995).
25. Kaysen, G. A., Stevenson, F. T. & Depner, T. A. Determinants of albumin concentration in hemodialysis patients. *Am J Kidney Dis* **29**, 658–668 (1997).
26. Morena, M. *et al.* Biocompatibility of heparin-grafted hemodialysis membranes: impact on monocyte chemoattractant protein-1 circulating level and oxidative status. *Hemodial Int* **14**, 403–410 (2010).
27. Canaud, B. *et al.* Mortality risk for patients receiving hemodiafiltration versus hemodialysis: European results from the DOPPS. *Kidney Int* **69**, 2087–2093 (2006).
28. Canaud, B., Chenine, L., Leray-Moragues, H., Morena, M. & Cristol, J. Principes et modalités d'application de l'hémodialyse au traitement de l'insuffisance rénale chronique. *EMC - Néphrologie [Article 18-063-B-10]* **13**, 1–25 (2016).
29. Tattersall, J., Ward, R. & Group, E. Online haemodiafiltration: definition, dose quantification and safety revisited. *Nephrol Dial Transplant* **28**, 542–550 (2013).
30. Chapdelaine, I. *et al.* Optimization of the convection volume in online post-dilution haemodiafiltration: practical and technical issues. *Clin Kidney J* **8**, 191–198 (2015).
31. Argiles, A. *et al.* Precise quantification of dialysis using continuous sampling of spent dialysate and total dialysate volume measurement. *Kidney Int* **52**, 530–537 (1997).
32. Daugirdas, J. T. Second generation logarithmic estimates of single-pool variable volume Kt/V: an analysis of error. *J Am Soc Nephrol* **4**, 1205–1213 (1993).
33. Daugirdas, J. T. & Schneditz, D. Overestimation of hemodialysis dose depends on dialysis efficiency by regional blood flow but not by conventional two pool urea kinetic analysis. *Asaio J* **41**, M719–724 (1995).
34. Bergström, J. & Wehle, B. No change in corrected beta 2-microglobulin concentration after cuprophane haemodialysis. *Lancet* **1**, 628–629 (1987).
35. Tattersall, J. E., DeTakats, D., Chamney, P., Greenwood, R. N. & Farrington, K. The post-hemodialysis rebound: predicting and quantifying its effect on Kt/V. *Kidney Int* **50**, 2094–2102 (1996).
36. Tattersall, J. Clearance of beta-2-microglobulin and middle molecules in haemodiafiltration. *Contrib Nephrol* **158**, 201–209 (2007).
37. Chertow, G. M., Lazarus, J. M., Lew, N. L., Ma, L. & Lowrie, E. G. Development of a population-specific regression equation to estimate total body water in hemodialysis patients. *Kidney Int* **51**, 1578–1582 (1997).

Acknowledgements

This study was supported by Hemotech S.A.S., France.

Author contributions

M.M., C.C. and J.P.C. are responsible for the concept/design of the study. M.M., A.R., L.C., A.S.B., A.M.D., C.L., C.C., B.S. and M.B. are responsible for data collection. M.M., J.P.C. and C.C. are responsible for data analysis/interpretation, drafting the article. All authors are responsible for the critical revision of the article. All authors approved the article.

Competing interests

The authors declare no competing interests.