



**HAL**  
open science

## Dissociation between objective and subjective perceptual experiences in a population of hemianopic patients: A new form of blindsight?

Clémentine Garric, Aïda Sebaa, Florent Caetta, Céline Perez, Julien Savatovsky, Claire Sergent, Sylvie Chokron

### ► To cite this version:

Clémentine Garric, Aïda Sebaa, Florent Caetta, Céline Perez, Julien Savatovsky, et al.. Dissociation between objective and subjective perceptual experiences in a population of hemianopic patients: A new form of blindsight?. *Cortex*, 2019, 117, pp.299-310. 10.1016/j.cortex.2019.05.006 . hal-02396090

**HAL Id: hal-02396090**

**<https://hal.science/hal-02396090v1>**

Submitted on 30 Nov 2020

**HAL** is a multi-disciplinary open access archive for the deposit and dissemination of scientific research documents, whether they are published or not. The documents may come from teaching and research institutions in France or abroad, or from public or private research centers.

L'archive ouverte pluridisciplinaire **HAL**, est destinée au dépôt et à la diffusion de documents scientifiques de niveau recherche, publiés ou non, émanant des établissements d'enseignement et de recherche français ou étrangers, des laboratoires publics ou privés.

**Title:**

Dissociation between objective and subjective perceptual experiences in a population of hemianopic patients: A new form of blindsight? (135)

**Short Title:**

Sensitivity in the blind visual field (38)

**Authors:**

Clémentine Garric<sup>a,b</sup>, Aïda Sebaa<sup>a</sup>, Florent Caetta<sup>a</sup>, Céline Perez<sup>a,c</sup>, **Julien Savatovsky**<sup>d</sup>, Claire Sergent<sup>b</sup> and Sylvie Chokron<sup>a,b,c</sup>

<sup>a</sup> Unité Vision et Cognition, Fondation Ophtalmologique de Rothschild, Paris, 75019 France

<sup>b</sup> Laboratoire de Psychologie de la Perception, UMR 8242, CNRS & Université Paris-Descartes, Paris, 75006 France

<sup>c</sup> Service de Neurologie, Fondation Ophtalmologique Rothschild, Paris, 75019 France

<sup>d</sup> Service d'Imagerie, Fondation Ophtalmologique Rothschild, Paris, 75019 France

**Corresponding author:**

Sylvie Chokron

Unité Vision et Cognition, Fondation Ophtalmologique de Rothschild, 29 rue Manin, Paris, 75019 France

+33148036672, [sylvie.chokron@gmail.com](mailto:sylvie.chokron@gmail.com)

**Keywords:**

blindsight, hemianopia, post-chiasmatic lesion, blind visual field, awareness

**Declaration of interest:**

None

## Abstract

After a post-chiasmatic lesion, some patients may retain unconscious visual function, known as *blindsight*, in their contralesional visual field. **Despite the importance of blindsight in the study of consciousness, little is known about the nature of patients' experience in their hemianopic field.** To address this knowledge gap, we measured blindsight, and assessed the perceptual experience in the contralesional visual field, of seventeen homonymous hemianopic (HH) patients. To ensure that the stimuli were shown in a “blind” sector of the visual field, we selected a subgroup of eight complete-HH patients, as determined by automatic perimetry. Firstly, we measured blindsight through a forced-choice task in which the patients had to identify letters displayed on a screen. Secondly, we compared the patients' binary responses (“Something was presented” vs. “Nothing was presented”) to responses on a new, five-level scale, the Sensation Awareness Scale (SAS), which we designed to include visual as well as non-visual answers (*e.g.* “I felt something”). Interestingly, only one of the eight complete-HH patients met the criteria for blindsight. More importantly, our SAS enabled us to identify a previously unreported dissociation, which we have named *blindsense*, in four of the eight complete-HH patients. Specifically, these four patients exhibited better-than-chance sensitivity to the presence of a stimulus on the subjective scale, despite being unable to identify the stimulus during the forced-choice task. Our findings highlight the importance of awareness-assessment methods to investigate perceptual experiences in the contralesional visual field and suggest a low incidence of blindsight in post-stroke HH patients.

## Significance Statement

**To investigate the nature of the perceptual experience in the blind visual field, we submitted a group of HH patients to visual letter-detection and letter-identification tasks and assessed them by the Sensation Awareness Scale (SAS).** Measuring their objective and subjective performance in their blind visual field enabled us to identify a previously unknown clinical profile, which we have named *blindsense* and which differs from both types (I and II) of blindsight. Our findings raise important questions on patients' perceptual experiences in the blind visual field following a post-chiasmatic lesion and underscore the complexity of classifying blindsight and related phenomena.

## 1. Introduction

The most common visual defect induced by a unilateral lesion of the retrochiasmatal pathways is *homonymous hemianopia* (HH) (Cavézian *et al.*, 2010; Zhang, Kedar, Lynn, Newman, & Biousse, 2006), whereby patients are blind in the contralesional visual field of each eye. Hemianopic patients can exhibit implicit residual capacities in the so-called “blind” visual field, despite exhibiting a severe contralesional visual-field defect. Such residual capacities are usually referred to as *blindsight*, a term coined by Weiskrantz *et al.* (1974) that has inspired debate (Cowey, 2010; Overgaard & Mogensen, 2015; Sanders, Warrington, Marshall, & Weiskrantz, 1974; Stoerig, 2006; Weiskrantz, 1972). Blindsight was first described in patients who could accurately steer their gaze toward a flashing light presented in their blind field, yet who did not report having perceived the stimulation (Poppel, Held, & Frost, 1973). Another blindsight patient, G.Y., reported awareness of certain stimuli despite not attesting to any concrete visual perception of them (Weiskrantz, Barbur, & Sahraie, 1995). Consequently, blindsight was eventually classified into two types: *type I*, the ability to discriminate specific attributes of a stimulus in the contralesional visual field without any awareness of it; and *type II: exhibiting objective performance and subjective performance in the blind visual field above chance level, without any conscious detection of the stimuli* (Brogaard, 2015; Weiskrantz, 1998). Diagnosing blindsight implies both accurate measurement of patients’ objective performance, and well-controlled and interpretable measurement of their subjective experience, which can depend on the methodology used to assess their awareness (Fayel *et al.*, 2014). For example, use of a binary scale (*i.e.* Aware *vs.* Unaware) may compel a subject to report being “unaware” of a stimulus despite having experienced a *minor degree* of awareness (Overgaard, 2011; Overgaard, FehI, Mouridsen, Bergholt, & Cleeremans, 2008). In one study, the patient G.R. exhibited distinct responses in his blind visual field in function of whether a binary scale (Seen *vs.* Not Seen) or the Perceptual Awareness Scale (PAS) (Ramsøy & Overgaard, 2004) was used, the latter of which comprises four levels: *Clear Experience*, *Almost Clear Experience*, *Weak Glimpse* and *Not Seen*. Indeed, when asked to process a stimulus in his contralesional visual field and subsequently report a dichotomous answer (Seen *vs.* Not Seen), G.R. appeared to exhibit a typical type-I-blindsight profile. However, when assessed by the PAS, he strongly reported *some degree* of awareness in the presence of stimuli in his contralesional visual field, consistent with a type-II profile. Despite this proven drawback, binary questionnaires are still widely used to study blindsight; indeed, very few researchers use graduated measurements of perception (Mazzi, Bagattini, & Savazzi, 2016; Overgaard *et al.*, 2008). Thus, our aim in the present study was to assess blindsight in several HH patients using a subjective report on a refined scale to better understand what these patients perceive and experience in their contralesional visual field.

### *1.1. Questioning the nature of perceptual experience*

Among the most controversial issues surrounding blindsight, is that of determining how to understand the nature of patients' perceptual experience in their blind field. Many authors affirm that blindsight is based on *unconscious* perceptual abilities (Leh, 2006; Sanders *et al.*, 1974). However, two other, competing hypotheses have been proposed to explain blindsight (for a review, see (Covey, 2010; Hadid & Lepore, 2017)): that of *residual remaining vision*; and that of *degraded, abnormal vision*, which arose from studies on type II blindsight and has been described as a “conscious experience, though of a very different nature to that of normal vision” (Kentridge, 2015; Mazzi *et al.*, 2016; Weiskrantz, 2009). Corroborating the residual normal-vision hypothesis, researchers have shown that blindsight could be triggered by the activation of sparse islands of surviving tissue in the primary cortex (V1) (Campion, Latto, & Smith, 1983; Fendrich, Wessinger, & Gazzaniga, 2001). However, blindsight aptitudes have also been found in patients that lack a functional primary cortex (Ajina, Pestilli, Rokem, Kennard, & Bridge, 2015; Mazzi *et al.*, 2016) and in monkeys with complete ablation of V1 (Stoerig & Covey, 1997). In those cases, blindsight seems to be mediated by subcortical pathways that bypass V1, such as the superior colliculus pathway and the dorsal lateral geniculate nucleus (dLGN) pathways. Based on a meta-analysis of human and monkey data, researchers have concluded that blindsight can indeed occur without any functional portion of the primary visual cortex (Stoerig, 2006). Moreover, several recent studies have underscored the roles of the ipsilateral hemisphere and the corpus callosum in processing of stimuli in the contralesional visual field of HH patients (Bridge, Thomas, Jbabdi, & Covey, 2008; Celeghin *et al.*, 2017; Leh, 2006).

Currently, there is a lack of consensus on the nature of perceptual experience in blindsight (*i.e.* totally unconscious vision, residual conscious vision or degraded abnormal vision), which is probably due to the fact that research in this area mainly comprises case studies, often conducted with highly trained patients (*e.g.* D.B or G.Y; for a review, see (Covey, 2010)) that are familiar with the experimental procedures involved. Therefore, even though blindsight is central to the study of consciousness, there remains a lack of basic epidemiologic data on it (*e.g.* incidence of blindsight among HH patients).

## 1.2. Towards population studies of blindsight

Understanding blindsight at the patient-population level would be beneficial both to clinicians working in rehabilitation and to researchers studying the influence of clinical parameters (*e.g.* the localization, side or size of the brain lesion; or the type of visual-field defect). Only a few studies have been conducted on (small) patient cohorts, and these provide only indirect information on blindsight incidence. For instance, Perenin and Jeannerod found blindsight in six out of eight (75%) patients (Perenin & Jeannerod, 1975). Ajina *et al.* studied the anatomical bases of blindsight in seventeen HH patients, twelve (71%) of whom they classified as “blindsight positive” and five (29%) as “blindsight negative”, based on two alternative forced-choice detection tasks related to the contralesional visual field (Ajina *et al.*, 2015). Alternatively, when blindsight was measured in a cohort of twenty patients through a Redundant Signal Effect (RSE) task involving indirect flash presentation to assess visual-information processing (Marzi, Tassinari, Aglioti, & Lutzemberger, 1986), the observed incidence was only 5%. However, in a group study of nineteen patients, in which their pupil responses to visual stimuli presented in their contralesional visual field was used as a proxy for residual visual reflexes, 13 patients (70%) were reported to exhibit blindsight (Sahraie, Trevelyan, MacLeod, Urquhart, & Weiskrantz, 2013). The above examples indicate that, despite the many articles on blindsight published over the past four decades, there remains a need for systematic investigation of the dissociation between *conscious visual detection* and *non-conscious visual processing abilities* in patient groups.

In the work reported here, our aim was two-fold: firstly, to re-evaluate the incidence of blindsight in a population of HH patients by measuring objective performance in two visual tasks; and secondly, to investigate the nature of the perceptual experience in the blind visual field, which has only been examined in single-case studies so far. According to clinical observations, the PAS, a four-level scale based on healthy subjects’ spontaneous reports, was not entirely appropriate for evaluating the experience of patients with visual-field defects. Thus, we designed the *Sensation Awareness Scale* (SAS), including a critical level that does not refer to visual experience. Thus, the complete SAS comprises the following assertions: [1] *I did not see anything*; [2] *I don’t think that I saw anything, but I am not sure*; [3] *I felt something*; [4] *I saw something*; and [5] *I clearly saw something and can identify it*. Subjective performance was calculated based on the SAS and subsequently compared to the objective performance, which was evaluated through forced-choice detection and identification tasks. Our experimental design enabled us to reclassify our HH patients according to the dissociation between objective and subjective performance and by different concepts of blindsight described in the literature.

Thus, we hypothesized that HH (and perhaps other) patients could exhibit the following profiles:

**Absence of blindsight:** objective performance and subjective performance both at chance level;

**Type I blindsight:** objective performance above chance level, without any statistically significant subjective sensitivity;

**Type II blindsight:** objective performance and subjective performance both above chance level, **without any conscious detection in the blind visual field;**

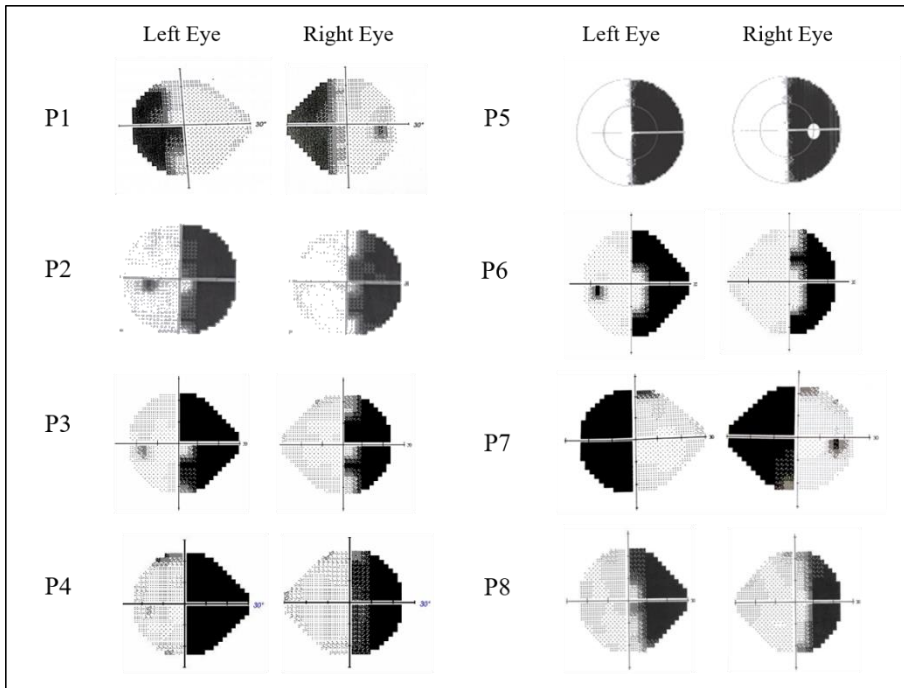
**Blindsense:** objective performance at chance level combined with a statistically significant subjective performance\*;

\* Note: **although this has not yet been defined or labeled as a specific phenomenon, there are literature reports of HH patients that experience *some* feeling in their blind visual field.**

## 2. Material and Methods

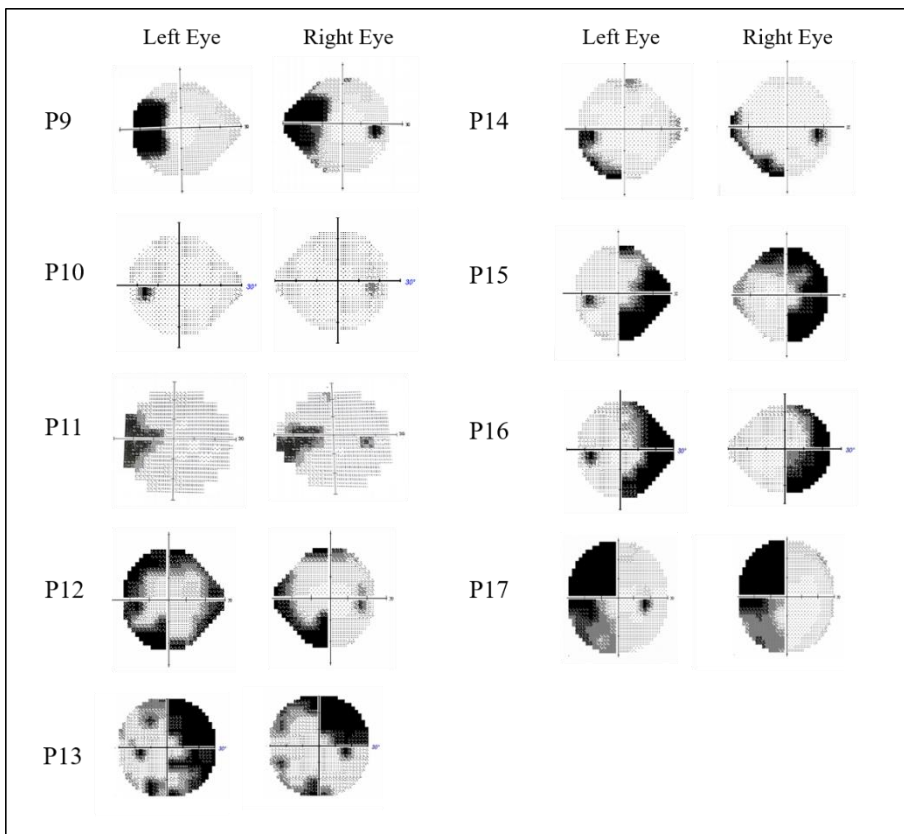
### 2.1. Participants

We recruited seventeen patients (five females; mean age = 52.8 years, SD = 17.6 years) suffering from left ( $n = 7$ ) or right ( $n = 10$ ) HH, induced by a post-stroke unilateral occipital lesion, and seventeen healthy controls (eight females; mean age = 52.2 years, SD = 14.0 years). All 34 participants were right-handed, and all completed a consent form before participation. After neuropsychological and ophthalmologic examinations, only those patients diagnosed with an *isolated* hemianopia (using Humphrey or Octopus automated perimeters) with corrected-to-normal visual acuity were included in the study. Clinical measurements of visual deficit were collected and analyzed for each patient. Based on a mean deviation obtained for both eyes, a strict threshold (at -30 dB of the mean deviation) was set for the measurements taken at  $10^\circ$  from the fixation point; above this threshold, the visual deficit was considered to be ambiguous (for technical details of the automated measurements, see (Sayo *et al.*, 2017)). Based on this clinical threshold, nine patients (group VIS10; four females; left HH ( $n = 4$ ); right HH ( $n = 5$ )) were excluded from the blindsight performance analyses; thus, these analyses were restricted to the remaining eight patients (group HH; one female; left HH ( $n = 2$ ); right HH ( $n = 6$ )) with no visual detection capacities at  $10^\circ$  of eccentricity. The clinical details and automated visual perimetry values for the patients are presented in **Figure 1**, **Figure 2** and **Table 1**.



**Figure 1: Automated visual perimetry, HH group ( $n = 8$ ).** The axial hash-marks denote increments of  $10^\circ$  (visual) and the greyscale denotes sensitivity (in decibels).

**2-column fitting image**



**Figure 2: Automated visual perimetry, VIS10 group. ( $n = 9$ ; This group had a detection score higher than  $-30$  dB at  $10^\circ$  in the blind field).** The axial hash-marks denote increments of  $10^\circ$  (visual) and the greyscale denotes sensitivity (in decibels).



## 2-column fitting image

Patient #	Sex	Age (years)	Onset (months)	Lesion site	Etiology	HH
<b><i>HH group</i></b>						
1	M	27	9	Right temporo-occipital	Ischemic	L
2	F	32	19	Left occipital and thalamic damage	Ischemic	R
3	M	58	7	Left occipital	Ischemic	R
4	M	69	14	Left temporo-parietal	Hemorrhagic	R
5	M	30	22	Left occipital	Ischemic	R
6	M	56	12	Left occipital	Ischemic	R
7	M	52	26	Right occipital	Ischemic	L
8	M	44	15	Left occipital	Ischemic	R
<b><i>VIS10 group</i></b>						
9	M	72	21	Right occipital	Ischemic	L
10	F	57	3	Left occipital	Ischemic	R
11	F	32	27	Right occipital, thalamus and subcortical atrophy	Ischemic	L
12	F	65	7	Right occipital	Ischemic	R
13	M	71	3	Left occipital	Ischemic	R
14	M	27	3	Right occipital	Ischemic	L
15	M	75	4	Left occipital	Ischemic	R
16	M	75	5	Left occipital	Ischemic	R
17	F	69	3	Right temporo-parietal	Hemorrhagic	L

**Table 1: Demographic and clinical data.** M, male; F, female; Onset: the time elapsed between lesion onset and the testing session; L, left; R, right; HH, homonymous hemianopia; “**HH group**” corresponds to the patients with a critical blind spot at 10° of eccentricity (Humphrey score  $\leq$  - 30 dB for both eyes). “**VIS10 group**” corresponds to the patients with residual detection at 10° of eccentricity (Humphrey score  $>$  - 30 dB for both eyes).

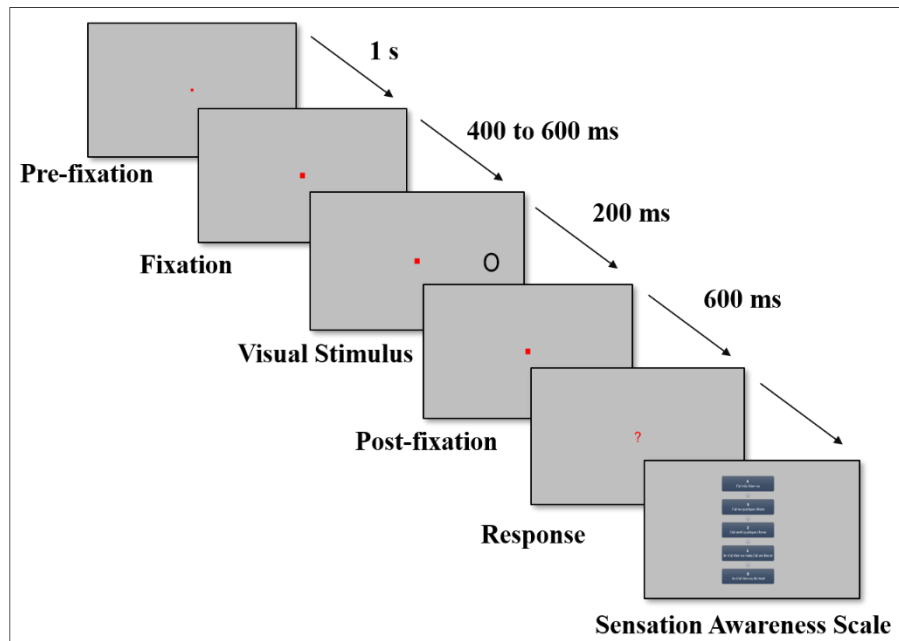
## 2-column fitting image

## 2.2. Materials

Participants were seated in a dark room and their heads were held in place using a chin piece and a forehead rest at 57 cm from the computer screen (CRT monitor; refresh rate: 85 Hz; resolution: 1280 x 1024 pixels). To control fixation during the experiment, the participants' eye movements were tracked by an *EyeTribe*.

## 2.3. Stimuli and Procedure

The central fixation point was a red square ( $1^\circ \times 1^\circ$ ). Participants were presented with black letters (X and O; size:  $3.5^\circ \times 3.5^\circ$ ) at maximal contrast on a gray background, at  $10^\circ$  eccentricity along the horizontal meridian to the left or right of the fixation point. One third of the trials were catch trials with no stimulus presented beside the fixation point. In each session, contralesional and ipsilesional visual fields were stimulated equally. **To avoid a habituation bias, the hemifield of stimulus presentation was semi-randomized: thus, a maximum of three successive trials in the same hemifield could be presented.** The experiment comprised two sessions: firstly, a detection task; and secondly, a forced-choice identification task. The two sessions differed only in the type of objective responses; otherwise, the trials were identical on the screen (see **Fig. 3**). In each session, two types of performance were recorded per trial: *objective sensitivity* (keyboard answer) and *subjective perceptual experience* (reported verbally according to the SAS). Objective performance in the detection task was measured on a binary scale as “*Something appeared on the screen*” (green button) or “*Nothing appeared on the screen*” (white button). **Objective measurements in the identification task were taken by forced-choice answers: the subjects were asked to specify manually which letter had appeared (X or O button), even if they did not see anything.** Once the objective answer had been recorded, subjective measurements were taken (using the SAS) at the end of a trial. The awareness scales were similar in the two sessions, although they were adapted to the associated objective task. For the identification task, the last two levels of the SAS were modified relative to those described earlier in the introduction: (4) *I saw a letter*; and (5) *I clearly saw a letter and can identify it*. Once the verbal response had been reported by the participant and recorded via keyboard entry by the researcher, the next trial began.



**Figure 3: Trial structure of the behavioral task.** After the pre-fixation period corresponding to a minimum of 1 second of fixation recorded by the Eyetrice, the fixation square was followed by a gap ranging from 400 ms to 600 ms. A stimulus (letter X or O) was then presented for 200 ms at 10° to the right or left visual field; however, in the catch trials, this time period was substituted with a gap of 200 ms. If the participants did not answer until 600 ms post-stimulus, then a question mark appeared on the screen to remind them that they had to press a key corresponding to their binary answer (detection task: Something appeared vs. Nothing appeared; identification task: X vs. O). Once the subject had given an objective response, they were tested on the awareness scale to obtain the subjective verbal report.

## 2-column fitting image

### 2.4. Data analysis

Trials in which the subjects' gaze deviated from the fixation window were rejected. The objective analyses were performed separately from the subjective analyses. Objective performance was measured using the Signal Detection Theory (SDT; see, for example: (Macmillan & Douglas Creelman, 2005; Stanislaw & Todorov, 1999)). To this aim, key responses were coded as *hits* in signal trials (*i.e.* correct detection or identification of the letter) and as *false alarms* in noise trials (*e.g.* the button corresponding to "something appeared on the screen" was pressed during a blank trial). Based on these data and the SDT, the objective sensitivity ( $d'$ ) for detection and for identification was calculated for each participant in the blind and the sighted fields (Green, D.M, & Swets, 1966; Macmillan & Douglas Creelman, 2005). Each subject's  $d'$  value was compared to a theoretical distribution of chance-level  $d'$  values (obtained by calculating randomized responses to the test 100,000 times) and considered as significantly above chance at an alpha risk of 5%. Subjective sensitivity was calculated in each condition using the Area Under the receiver operating Curve (AUC) extracted from the signed rank test, which also provides a statistical significance of the difference in rating for signal and noise trials. Thus, subjective performance above chance level indicated that the

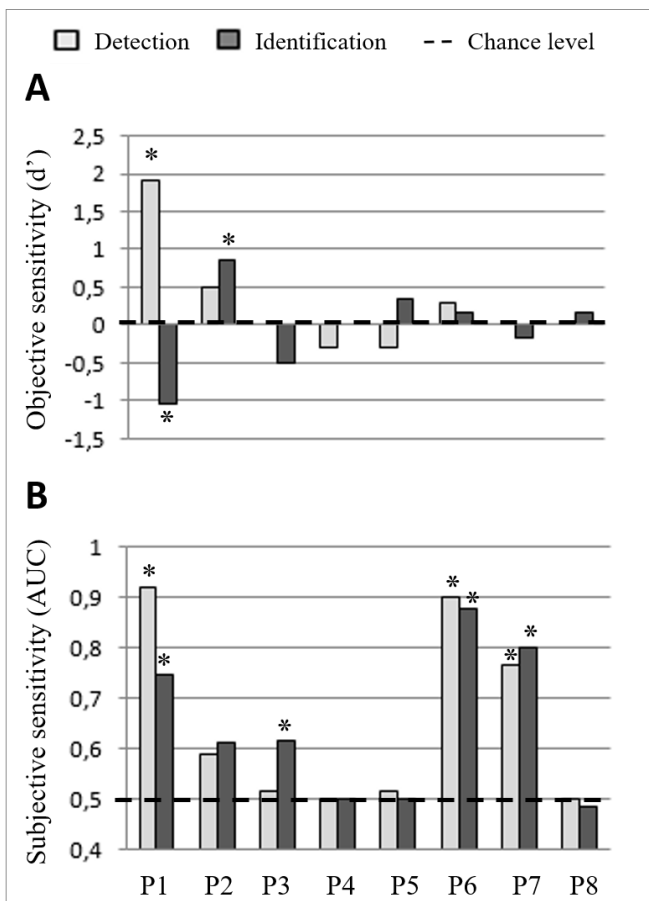
use of the awareness scale was significantly different in the presence of a target than in the absence of one.

**For two patients from the HH group (patients P6 and P8), we were able to perform a lesion analysis. For lesion reconstruction, MRI images were acquired on a Philips 3 Tesla unit, in the 3D FLAIR (Fluid-Attenuated Inversion Recovery) 8000 sequence (Time to repetition: 8000 ms; Echo time: 365 ms; Matrix size: 240 x 243 pixels; Reconstruction size: 240 x 243 pixels; Field of view: 240 x 240 mm; Flip angle: 90°; Voxel size range: from 0.9 mm to 1.25 mm). Anatomic slices were recovered in DICOM format for subsequent 3D visualization using OsiriX Medical Imaging software (OsiriX MD, Pixmeo, Geneva, Switzerland). The lesion contours were manually delineated in each 2D slice, thereby enabling reconstruction of a volume of interest (VOI; in cm<sup>3</sup>). To determine the anatomic extent of the lesions, each damaged Brodmann area was individually identified with the help of Brain Voyager software (Brain Innovation, Maastricht, The Netherlands) and subsequently checked by a neuroradiologist.**

### **3. Results**

#### *3.1. Average group performance*

As expected, in the healthy controls (CT) group, the objective and subjective sensitivities were significantly above chance ( $p < 0.05$ ). A Kruskal-Wallis multiple comparison of objective performance among the HH group, VIS10 group (composed of HH patients with spared vision at 10°) and CT group clearly revealed group effects, both in the detection task ( $H(2, N = 34) = 21.6; p < 0.01$ ) and in the identification task ( $H(2, N = 34) = 18.6; p < 0.001$ ) (see **Appendices, Figure A.**). Thus, whereas the HH patients did not significantly differ from the control group in terms of performance in the sighted hemifield **Fig A.1, A.2** (red lines), they *did* perform significantly lower in the blind field than did the controls (Dunn's multiple comparison;  $p < 0.001$  in detection task,  $p < 0.01$  in identification task), **Fig A.1, A.2** (blue lines). There was also a group effect regarding subjective performance in both the detection task ( $H(2, N = 34) = 16.57, p < 0.001$ ) and the identification task ( $H(2, N = 34) = 17.23; p < 0.001$ ). Dunn's multiple comparison revealed that for both tasks, only the HH patients' mean subjective sensitivity in the blind field was significantly lower than that of the other groups (**Fig A.3, A.4**; blue lines). Detailed objective and subjective sensitivities of the HH patients for each task are reported in **Figure 4**. Use of the SAS is represented in **Figure 4**, which is ordered according to the subjective sensitivity results.

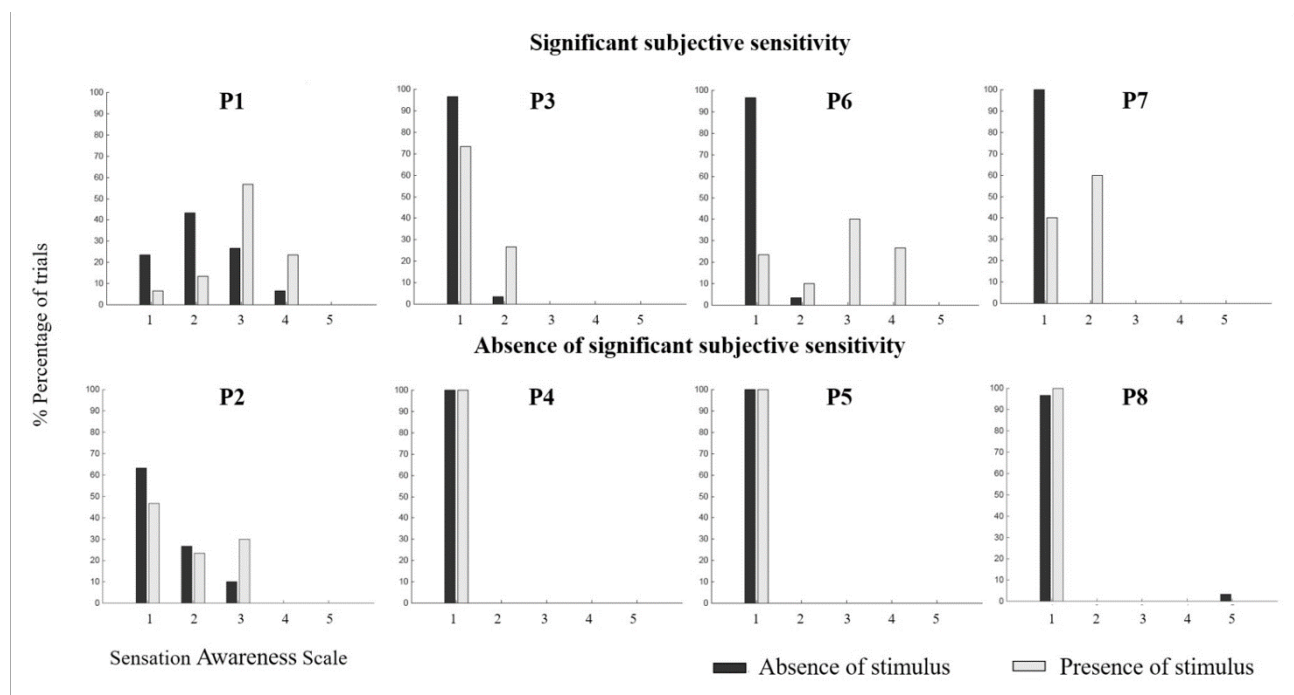


**Figure 4: Comparison of objective sensitivities and subjective sensitivities per patient (HH group,  $n = 8$ ), per session**

(detection session: light grey, identification session: dark grey); **A.** Objective sensitivities ( $d'$ ) for each patient in the detection task (keyboard responses to the binary scale) and the forced-choice task (keyboard responses: X or O) are compared to the chance level ( $*p < 0.05$ , performance significantly above chance, with a  $d'$  significantly different from a theoretical  $d'$  value generated by random responses). **B.** Subjective-sensitivity AUC values for each patient were calculated by comparing the distribution of the level reported on the SAS between “letter trials” and catch trials. The signed rank test assessed the significance of the difference of the distribution with a  $p$ -value of 0.05. ( $*p < 0.05$ ,

subjective sensitivity significantly different in the presence of stimulus compared to in the catch trials).  
AUC: Area Under the receiver operating Curve.

**1,5-column fitting image**



**Figure 5: Distribution of responses on the Sensation Awareness Scale (SAS) during stimulation in the blind hemifield and during catch trials, per patient, in the identification task.** Patients are ordered according to the results of subjective sensitivity: P1, P3, P6 and P7 exhibited a significant subjective sensitivity ( $p < 0.05$ ), compared to P2, P4, P5 and P8. The dark-grey bars denote catch trials and the light-grey bars, target trials in which 'X' or 'O' was presented in the blind visual field. Horizontal axes: the SAS levels: (1) I did not see anything; (2) I don't think that I saw anything, but I am not sure; (3) I felt something; (4) I saw something; and (5) I clearly saw something and can identify it. The vertical axis indicates the percentage of trials.

**2-column fitting image**

Below, we describe the dissociation between the objective performance and the subjective performance of the HH patients.

### 3.2. Type I blindsight: Patient P2

Only one of the eight HH patients (P2) could distinguish between the letters X and O in her contralesional visual field, responding at significantly higher than chance level ( $p < 0.05$ ; **Figure 4A** dark grey bar). However, P2's objective detection was at chance level, suggesting the presence of type I blindsight. This was confirmed by the subjective experience assessment, which revealed her lack of explicit sensitivity to the presence of stimuli in both tasks (**Figure 4B**). Indeed, P2 responded at different SAS levels but similarly in the presence or absence of letters on the screen (**Figure 5**).

### 3.3. Absence of blindsight: Patients P4, P5 and P8

The objective performance and subjective performance of patients P4, P5 and P8 in both tasks did not exceed chance level (**Figures 4A & 4B**). They reported seeing nothing (SAS level 1) during the catch trials or when a letter had been presented in their blind hemifield (**Figure 5**).

### 3.4. Subjective sensitivity without significant objective identification: Patients P1, P3, P6 and P7

The four remaining HH patients (P1, P3, P6 and P7) did not perform the identification task above chance-level (**Figure 4A**, dark grey bar); however, they demonstrated significant subjective sensitivity ( $p < 0.05$ ; **Figure 4B**). To the best of our knowledge, this profile has never previously been described in the literature. We have named this dissociation between significant subjective performance and chance-level stimulus identification, *blindsense*. Although P3 demonstrated a significant subjective sensitivity only during the identification task ( $p = 0.01$ ; light grey bar: P3), P1, P6 and P7 exhibited subjective sensitivity in both tasks. Regarding these patients' SAS responses during the second session, a pattern clearly arose (**Figure 5**). Their reported awareness when a letter appeared in the blind field is shifted on the scale, mainly at levels 2 (*I don't think that I saw anything, but I am not sure*) and 3 (*I felt something*), whereas when nothing appeared on the screen, the patients reported primarily at level 1 (*I did not see anything*). Interestingly, and as observed in **Figure 5**, two of the patients (P3 and P7) answered exclusively at level 2 when presented with the stimulus, whereas the other two patients (P1 and P6) answered mainly at level 3 and marginally at level 2. The results for patient P1 differed notably from this group in two regards. Firstly, he was the only patient to both objectively and subjectively detect the presence of stimuli in his blind field ( $p < 0.05$ ; P1: light grey bar). Secondly, he demonstrated an abnormal reverse performance in identifying the letters, with an objective sensitivity significantly *below* chance in the identification task ( $p < 0.05$ ; P1: light grey bar). This atypical result is discussed later as a case of “*reverse blindsight*”. The aforementioned blindsight profiles are summarized in **Table 2**.

Patient #	Objective performance above chance (p < 0.05)	Subjective performance above chance (p < 0.05)	Profile
1	-	✓	Blindsense
2	✓	-	Type I blindsight
3	-	✓	Blindsense
4	-	-	Absence of blindsight
5	-	-	Absence of blindsight
6	-	✓	Blindsense
7	-	✓	Blindsense
8	-	-	Absence of blindsight

**TABLE 2:** Presence and type of blindsight and presence of blindsense, in the HH group, based on the dissociation between objective performance and subjective performance during the identification task

**2-column fitting image**

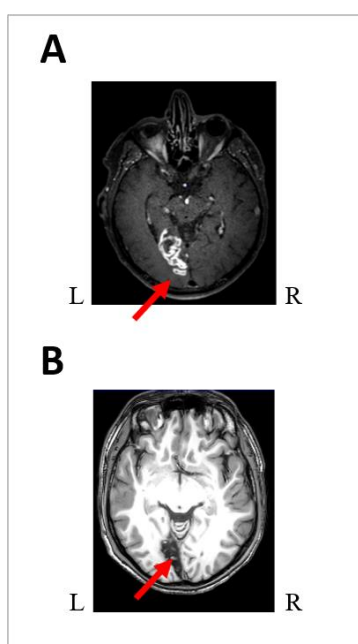
### 3.5. SAS levels and correctness

We plotted the distributions of correct responses and incorrect responses in the identification task, for each level of the SAS (**Appendices, Figure B**). Even though P2 successfully identified the letters X and O at a significant level, there was no correlation between a higher reported sensitivity on the scale and the correct answers. In fact, P2 answered *mostly* at levels 1, 2 and 3, but performed *best* at level 2. Concerning the remaining seven patients (P1, P3 to P8), their level of sensitivity was not predictive of their objective performance, either.



### 3.6. Lesion analysis

As illustrated in Figure 6, we were able to perform neuroanatomic analysis of the lesions in patients P6 and P8. Interestingly, both patients suffered from a complete right homonymous hemianopia. However, P6 exhibited a blindsense profile (*i.e.* subjective sensitivity without significant objective identification) whereas P8 did not exhibit any sign of blindsight or blindsense. For P6, neuroanatomic analysis revealed a mean lesion volume of 4.98 cm<sup>3</sup> and his lesion involved only Brodmann Areas 17 and 18. In P8, neuroanatomic analysis revealed a mean lesion volume of 14.5 cm<sup>3</sup> and his lesion involved Brodmann Areas 17, 18, 19, 29 and 30.



**Figure 6:** Neuroanatomical lesion analyses: (A) P6, right homonymous hemianopia and blindsense, 3D Flair 8000 sequence acquisition showing the lesion of BA 17 and 18 in the left hemisphere and (B) P8, right homonymous hemianopia with absence of blindsight, 3DTI sequence showing a lesion of BA 17, 18, 19, 29, 30 in the left hemisphere. Please note that conversely to radiological conventions, here, for convenience, the left hemisphere is presented on the left.

1 -column fitting image

## 4. Discussion

Although the objective tasks that we employed in this study were consistent with the classical format of blindsight experiments, we introduced a novel element in the subjective measure. Indeed, it is not uncommon during clinical examinations that patients with a field defect spontaneously report having a “sensation” in response to a stimulus presented in their blind field—albeit a sensation that they cannot

qualify as “visual”. Despite this common observation, this spontaneously-reported level of awareness has never been integrated in systematic tests. In the present experiment, we developed the SAS, which adds the aforementioned level to the previously reported PAS. Using this procedure, we classified the patients’ deficits into different profiles according to the presence or absence of significant sensitivity to the stimulus in the objective measurements and the subjective measurements.

#### 4.1. Scarcity of blindsight

Among the eight tested patients, only one patient, P2, met the criteria for blindsight. Indeed, P2 performed the identification task better than chance while being unable to consciously detect the target (detection performance below chance level). Considering that sensitivity on the subjective scale was not significant, P2’s profile clearly corresponds to type I blindsight. Using a restrictive threshold to eliminate patients that could residually detect a visual stimulus at 10° of eccentricity, we thus found type I blindsight in only one HH patient. Three patients were unable to identify the letters or to report any subjective experience from the stimulus (**Table 2**: patients P4, P5 and P8). Since we did not observe any patients with type II blindsight, according to our criteria the HH group showed an incidence of blindsight of 12.5% (one of eight patients) and an absence of blindsight of 37.5% (three of eight patients). Finally, the four remaining patients in the HH group (50%) did not meet the criteria previously described in the literature for either incidence or non-incidence of blindsight. These patients performed at chance-level on the objective task, whereas their sensitivity to the stimulus was significantly above chance when measured on the SAS (see patients P1, P3, P6, and P7 in **Table 2**). We have named their profile as *blindsense*, as all these patients significantly sensed the presence of the stimuli in their blind field without actually identifying the stimuli. We expound on this concept below.

#### 4.2. Blindsense

Blindsense patients, exhibiting an unusual dissociation between significant subjective performance and objective performance at chance-level, represented half of our group of complete HH patients. Thus, in our study, a markedly higher number of patients exhibited blindsense than type I blindsight, the latter of which has been extensively discussed in the literature. Blindsense patients do not match the type II blindsight description, since their objective detection and identification performance scores were at chance. However, their SAS answers indicate that their perceptual experiences differed significantly when a letter was presented in their blind field compared to when nothing was presented. Interestingly, although such a profile has never been described in the literature, it is consistent with a frequently observed clinical reality. Indeed, neuropsychologists specialized in cortical visual impairment have confirmed that many patients report “*feeling something*” in their contralesional visual field without being able to precisely distinguish or describe the stimuli that they “*felt*”. Here we wish

p. 17

to emphasize that, by testing a patient cohort, rather than a single case, and by using an extended awareness scale, we were able to identify the behavioral pattern of blindsense. Assessment of a larger population should enable measurement of the incidence of this phenomenon relative to types I and II blindsight.

One patient, P1, stood out from the blindsense group due to a remarkable result: his identification performance was significantly *lower* than chance-level, yet he was the only patient to have scored *above* chance in the binary task, despite being objectively “blind” (based on perimetry). This result suggests that the responses he gave were *not* completely independent from the stimulus: indeed, P1 pressed the O-key significantly more often when an X appeared on the screen, and *vice versa*. However, during the same session, he performed far above chance in the trials involving presentation of a stimulus in the intact visual field. Thus, we can exclude the possibility that his performance was due to an erroneous understanding of the response mapping. One interpretation is that P1 presented a sort of “*reverse-blindsight*”: he processed the visual information, but his behavioral output was somehow reversed. A rather similar phenomenon has been reported in a patient with unilateral neglect (Mijović-Prelec, Shin, Chabris, & Kosslyn, 1994). Again, such behavior raises questions on the nature of patients’ experiences in their blind visual field, as discussed below.

#### 4.3. Awareness measurement

Methods for assessing patients’ awareness levels in blindsight experiments remain controversial (Overgaard, 2011; Weiskrantz, 2009). Undeniably, if one claims to demonstrate unconscious abilities, one must provide strong evidence to this effect. In our study, the juxtaposition between the binary scale and the SAS in the same session (detection task) demonstrated that, after patients had answered “*nothing appeared on the screen*” in a binary forced-choice objective task, they could nonetheless report “*not being sure*” or “*feeling something*”. Thus, our results highlight two main points: firstly, they confirm that a gradual scale enables more sensitive measurement of the subjective report than does a binary scale; secondly, they suggest that the assessment of detection performance through a binary choice in patients strongly depends on the patients’ decision criteria. If researchers choose to use a Yes/No paradigm to assess patient’s detection, then one requirement would be to eliminate the response criteria bias through a highly specific psychophysical experimental design, as previously proposed (Azzopardi & Cowey, 1997). Moreover, we would like to highlight the fact that the patients in our study, instead answering “*I saw something*” or “*I clearly saw something and can identify it*”, mainly gave the non-visual answers such as “*I am unsure*” or “*I feel something*”. This is highly interesting in terms of phenomenological experience. In fact, researchers have traditionally assumed that blindsight is a *visual* experience, albeit a degraded one. However, as we discuss below, this may not be the case: patients may be *aware of a stimulus* but *unaware of its specific visual nature*.

#### 4.4. Nature of the perceptual experience

Is the residual perception experience of patients with visual-field defects triggered by degraded normal vision or is it a “non-visual experience”? (Brogaard, 2015; Kentridge, 2015; Weiskrantz, 2009). The profile observed in type II blindsight patients suggests that they *do indeed experience a form of degraded normal vision*. Corroborating this interpretation, a positive correlation between patients’ correct responses in a stimulus-identification task and their level of awareness of the stimulus has previously been reported (Overgaard *et al.*, 2008). However, while our blindsense patients displayed above-chance level sensitivity to the stimulus using a subjective scale, they performed at chance level for detection or identification in forced-choice tasks. Thus, it seems that rather than exhibiting normal degraded vision, blindsense patients might instead experience a conscious “non-visual” sensation in response to visual stimulation. These results open a new avenue for future studies on blindsight, suggesting that objective and subjective scales (binary or otherwise) could include non-visual questions to elucidate patients’ perceptual experiences in the contralesional visual field. Another critical point to address in the future will be to ascertain any possible differences between left and right HH patients, as our group has previously demonstrated the effect of lesion lateralization on capacities in the contralesional as well as ipsilesional visual field in HH patients (Cavézian *et al.*, 2015; Chokron, S., Peyrin, C. & Perez, 2018; Perez & Chokron, 2014). **Interestingly, in the present study, a left hemispheric lesion could be associated either with the presence or absence of blindsight, or with blindsense. Accordingly, the association between the lesion lateralization and the subjective experience in the blind visual field is far from being evident and requires further studies among a larger group of HH patients. However, being able to perform a neuroanatomical analysis on patients P6 (blindsense) and P8 (absence of blindsight or blindsense), we found that blindsense in patient P6 was associated to a relatively small lesion that affected only left BA 17 and 18, whereas patient P8, who presented a larger lesion that affected, in addition to left BA 17 and 18, left BA 19, 29 and 30, did not exhibit any sign of blindsense. Our findings suggest that the occurrence of blindsense or blindsight in post-stroke HH patients could require a relatively small lesion that includes, at the very least, loss of the striate cortex, but that spares other occipital areas. Further studies should include analysis of neuroanatomic lesions in larger cohorts of HH patients to elucidate the neuroanatomical correlates of patients’ perceptual experience in their contralesional visual field.**

#### 5. Conclusion

Measuring blindsight and perceptual experience in eight patients selected among a group of seventeen post-stroke HH patients, we identified one patient with type I blindsight (12.5%), no cases of type II blindsight (0%), three patients with a total absence of blindsight (37.5%) and most importantly, four patients (50%) exhibiting a never-before described phenomenon, which we have named *blindsense*.

Given that blindsight is frequently used to train HH patients (Chokron *et al.*, 2008; Hadid & Lepore, 2017; Perez & Chokron, 2014), clinicians and researchers must gain a broader understanding of the subtleties of patients' perception experiences. Further characterization of blindsight types, including the blindsense phenomenon that we have reported here, and understanding of the neuronal correlates of these phenomena, will both require studies of larger cohorts of hemianopic patients.

## **6. Acknowledgments**

SC is grateful to the Edmond and Benjamin de Rothschild Foundations for their support.

## **7. Funding**

This research was not funded or financed by any specific grants from public, private or not-for-profit agencies.

## References

- Ajina, S., Pestilli, F., Rokem, A., Kennard, C., & Bridge, H. (2015). Human blindsight is mediated by an intact geniculo-extrastriate pathway. *ELife*, 4, 1–23. <https://doi.org/10.7554/eLife.08935>
- Azzopardi, P., & Cowey, A. (1997). Is blindsight like normal, near-threshold vision? *Proceedings of the National Academy of Sciences*, 94(December), 14190–14194. <https://doi.org/10.1073/pnas.94.25.14190>
- Bridge, H., Thomas, O., Jbabdi, S., & Cowey, A. (2008). Changes in connectivity after visual cortical brain damage underlie altered visual function. *Brain*, 131(6), 1433–1444. <https://doi.org/10.1093/brain/awn063>
- Brogaard, B. (2015). Type 2 blindsight and the nature of visual experience. *Consciousness and Cognition*, 32, 92–103. <https://doi.org/10.1016/j.concog.2014.09.017>
- Campion, J., Latto, R., & Smith, Y. M. (1983). Is blindsight an effect of scattered light, spared cortex, and near-threshold vision? *Behavioral and Brain Sciences*, 6(03), 423. <https://doi.org/10.1017/S0140525X00016861>
- Cavézian, C., Gaudry, I., Perez, C., Coubard, O., Doucet, G., Peyrin, C., ... Chokron, S. (2010). Specific impairments in visual processing following lesion side in hemianopic patients. *Cortex*, 46(9), 1123–1131. <https://doi.org/10.1016/j.cortex.2009.08.013>
- Cavézian, C., Perez, C., Peyrin, C., Gaudry, I., Obadia, M., Gout, O., & Chokron, S. (2015). Hemisphere-dependent ipsilesional deficits in hemianopia: Sightblindness in the ‘intact’ visual field. *Cortex*, 69, 166–174. <https://doi.org/10.1016/j.cortex.2015.05.010>
- Celeghin, A., Diano, M., de Gelder, B., Weiskrantz, L., Marzi, C. A., & Tamietto, M. (2017). Intact hemisphere and corpus callosum compensate for visuomotor functions after early visual cortex damage. *Proceedings of the National Academy of Sciences*, 114(48), E10475–E10483. <https://doi.org/10.1073/pnas.1714801114>
- Chokron, S., Peyrin, C. & Perez, C. (2018). Ipsilesional Deficit of Selective Attention in Left homonymous hemianopia and Left Unilateral spatial Neglect. *Neuropsychologia* (in press). *Neuropsychologia*. <https://doi.org/10.1016/j.neuropsychologia>
- Chokron, S., Perez, C., Obadia, M., Gaudry, I., Laloum, L., & Gout, O. (2008). From blindsight to sight: Cognitive rehabilitation of visual field defects. *Restorative Neurology and Neuroscience*, 26, 305–320.
- Cowey, A. (2010). The blindsight saga. *Experimental Brain Research*, 200(1), 3–24. <https://doi.org/10.1007/s00221-009-1914-2>
- Fayel, A., Chokron, S., Cavezian, C., Vergilino-Perez, D., Lemoine, C., & Dore-Mazars, K. (2014). Characteristics of contralesional and ipsilesional saccades in hemianopic patients. *Experimental Brain Research*, 232(3), 903–917. <https://doi.org/10.1007/s00221-013-3803-y>
- Fendrich, R., Wessinger, C. M., & Gazzaniga, M. S. (2001). Speculations on the neural basis of islands of blindsight. *Progress in Brain Research*, 134(June), 353–366. [https://doi.org/10.1016/S0079-6123\(01\)34023-2](https://doi.org/10.1016/S0079-6123(01)34023-2)
- Green, D.M., & Swets, J. A. (1966). Signal detection and psychophysics. *New York: Wiley*, 702.
- Hadid, V., & Lepore, F. (2017). From Cortical Blindness to Conscious Visual Perception: Theories on Neuronal Networks and Visual Training Strategies. *Frontiers in Systems Neuroscience*. <https://doi.org/10.3389/fnsys.2017.00064>
- Kentridge, R. W. (2015). What is it like to have type-2 blindsight? Drawing inferences from residual function in type-1 blindsight. *Consciousness and Cognition*, 32, 41–44. <https://doi.org/10.1016/j.concog.2014.08.005>
- Leh, S. E. (2006). Unconscious vision: new insights into the neuronal correlate of blindsight using diffusion tractography. *Brain*, 129(7), 1822–1832. <https://doi.org/10.1093/brain/awl111>
- Macmillan, N. A., & Douglas Creelman, C. (2005). *Detection Theory, A user’s Guide* (TeAM YYEPG).
- Marzi, C. A., Tassinari, G., Aglioti, S., & Lutzemberger, L. (1986). Spatial summation across the vertical meridian in hemianopics: A test of blindsight. *Neuropsychologia*, 24(6), 749–758. [https://doi.org/10.1016/0028-3932\(86\)90074-6](https://doi.org/10.1016/0028-3932(86)90074-6)

- Mazzi, C., Bagattini, C., & Savazzi, S. (2016). Blind-Sight vs. Degraded-Sight: Different Measures Tell a Different Story. *Frontiers in Psychology*, 7(JUN), 1–11. <https://doi.org/10.3389/fpsyg.2016.00901>
- Mijović-Prelec, D., Shin, L. M., Chabris, C. F., & Kosslyn, S. M. (1994). When does “no” really mean “yes”? A case study in unilateral visual neglect. *Neuropsychologia*, 32(2), 151–158. [https://doi.org/10.1016/0028-3932\(94\)90002-7](https://doi.org/10.1016/0028-3932(94)90002-7)
- Overgaard, M. (2011). Visual experience and blindsight: A methodological review. *Experimental Brain Research*, 209(4), 473–479. <https://doi.org/10.1007/s00221-011-2578-2>
- Overgaard, M., Fehl, K., Mouridsen, K., Bergholt, B., & Cleeremans, A. (2008). Seeing without seeing? Degraded conscious vision in a blindsight patient. *PLoS ONE*, 3(8), 8–11. <https://doi.org/10.1371/journal.pone.0003028>
- Overgaard, M., & Mogensen, J. (2015). Reconciling current approaches to blindsight. *Consciousness and Cognition*, 32, 33–40. <https://doi.org/10.1016/j.concog.2014.08.003>
- Perenin, M. T., & Jeannerod, M. (1975). Residual vision in cortically blind hemifields. *Neuropsychologia*, 13(1), 1–7. [https://doi.org/10.1016/0028-3932\(75\)90041-X](https://doi.org/10.1016/0028-3932(75)90041-X)
- Perez, C., & Chokron, S. (2014). Rehabilitation of homonymous hemianopia: insight into blindsight. *Frontiers in Integrative Neuroscience*, 8(October), 1–12. <https://doi.org/10.3389/fnint.2014.00082>
- Poppel, E., Held, R., & Frost, D. (1973). Residual Visual Function after Brain Wounds involving the Central Visual Pathways in Man. *Nature*, 243, 295–296. <https://doi.org/10.1038/243295a0>
- Ramsøy, T. Z., & Overgaard, M. (2004). Introspection and subliminal perception. *Phenomenology and the Cognitive Sciences*, 3(1), 1–23. <https://doi.org/10.1023/B:PHEN.0000041900.30172.e8>
- Sahraie, A., Trevethan, C. T., MacLeod, M. J., Urquhart, J., & Weiskrantz, L. (2013). Pupil response as a predictor of blindsight in hemianopia. *Proceedings of the National Academy of Sciences*, 110(45), 18333–18338. <https://doi.org/10.1073/pnas.1318395110>
- Sanders, M. D., Warrington, E., Marshall, J., & Weiskrantz, L. (1974). “BLINDSIGHT”: VISION IN A FIELD DEFECT. *The Lancet*, 303(7860), 707–708. [https://doi.org/10.1016/S0140-6736\(74\)92907-9](https://doi.org/10.1016/S0140-6736(74)92907-9)
- Sayo, A., Ueno, S., Kominami, T., Nishida, K., Inooka, D., Nakanishi, A., ... Terasaki, H. (2017). Longitudinal study of visual field changes determined by Humphrey Field Analyzer 10-2 in patients with Retinitis Pigmentosa. *Scientific Reports*, 7(1), 16383. <https://doi.org/10.1038/s41598-017-16640-7>
- Stanislaw, H., & Todorov, N. (1999). Calculation of signal detection theory measures. *Behavior Research Methods, Instruments, & Computers*, 31(1), 137–149. <https://doi.org/10.3758/BF03207704>
- Stoerig, P. (2006). Blindsight, conscious vision, and the role of primary visual cortex. *Progress in Brain Research*, 155(1), 217–234. [https://doi.org/10.1016/S0079-6123\(06\)55012-5](https://doi.org/10.1016/S0079-6123(06)55012-5)
- Stoerig, P., & Cowey, A. (1997). Blindsight in man and monkey. *Brain*, 120(3), 535–559. <https://doi.org/10.1093/brain/120.3.535>
- Weiskrantz, L. (1972). Review Lecture: Behavioural analysis of the monkey’s visual nervous system. *Royal Society*, 455(1069), 427–455. Retrieved from <http://www.jstor.org/stable/76163>
- Weiskrantz, L. (1998). Consciousness and commentaries. In *Towards a science of consciousness II—the second Tucson discussions and debates* (pp. 371–377). Cambridge.
- Weiskrantz, L. (2009). Is blindsight just degraded normal vision? *Experimental Brain Research*, 192(3), 413–416. <https://doi.org/10.1007/s00221-008-1388-7>
- Weiskrantz, L., Barbur, J. L., & Sahraie, A. (1995). Parameters affecting conscious versus unconscious visual discrimination with damage to the visual cortex (V1). *Proceedings of the National Academy of Sciences of the United States of America*, 92(13), 6122–6126. <https://doi.org/10.1073/pnas.92.13.6122>
- Zhang, X., Kedar, S., Lynn, M. J., Newman, N. J., & Biousse, V. (2006). Homonymous hemianopias: Clinical-anatomic correlations in 904 cases. *Neurology*, 66(6), 906–910. <https://doi.org/10.1212/01.wnl.0000203913.12088.93>