



HAL
open science

Genomic architecture and introgression shape a butterfly radiation

Nathaniel B Edelman, Paul B Frandsen, Michael Miyagi, Bernardo Clavijo, John Davey, Rebecca B Dikow, Gonzalo García-Accinelli, Steven M van Belleghem, Nick Patterson, Daniel E Neafsey, et al.

► **To cite this version:**

Nathaniel B Edelman, Paul B Frandsen, Michael Miyagi, Bernardo Clavijo, John Davey, et al.. Genomic architecture and introgression shape a butterfly radiation. *Science*, 2019, 366 (6465), pp.594-599. 10.1126/science.aaw2090 . hal-02395414

HAL Id: hal-02395414

<https://hal.science/hal-02395414v1>

Submitted on 5 Dec 2019

HAL is a multi-disciplinary open access archive for the deposit and dissemination of scientific research documents, whether they are published or not. The documents may come from teaching and research institutions in France or abroad, or from public or private research centers.

L'archive ouverte pluridisciplinaire **HAL**, est destinée au dépôt et à la diffusion de documents scientifiques de niveau recherche, publiés ou non, émanant des établissements d'enseignement et de recherche français ou étrangers, des laboratoires publics ou privés.

Title: Genomic architecture and introgression shape a butterfly radiation

Authors: Nathaniel B. Edelman^{1*}, Paul B. Frandsen^{2,3}, Michael Miyagi¹, Bernardo Clavijo⁴, John Davey⁵, Rebecca Dikow³, Gonzalo García-Accinelli⁴, Steven M. Van Belleghem⁶, Nick Patterson^{7,8}, Daniel E. Neafsey^{8,9}, Richard Challis¹⁰, Sujai Kumar¹⁰, Gilson R. P. Moreira¹¹, Camilo Salazar¹², Mathieu Chouteau¹³, Brian A. Counterman¹⁴, Riccardo Papa^{6,15}, Mark Blaxter¹⁰, Robert D. Reed¹⁶, Kanchon K. Dasmahapatra⁵, Marcus Kronforst¹⁷, Mathieu Joron¹⁸, Chris D. Jiggins¹⁹, W. Owen McMillan²⁰, Federica Di Palma⁴, Andrew J. Blumberg²¹, John Wakeley¹, David Jaffe^{8,22}, James Mallet^{1*}

Affiliations:

¹Department of Organismic and Evolutionary Biology, Harvard University, Cambridge, MA, 02138, USA

²Department of Plant and Wildlife Sciences, Brigham Young University, Provo, UT, 84602, USA

³Data Science Lab, Office of the Chief Information Officer, Smithsonian Institution, Washington, D.C., 20560, USA

⁴Earlham Institute, Norwich Research Park, NR4 7UZ, UK

⁵Department of Biology, University of York, YO10 5DD, UK

⁶Department of Biology, University of Puerto Rico, Río Piedras Campus, San Juan, Puerto Rico

⁷Department of Human Evolutionary Biology, Harvard University, Cambridge, MA, 02138, USA

⁸Broad Institute of MIT and Harvard, Cambridge, MA, 02142, USA

⁹Harvard TH Chan School of Public Health, Boston, MA, 02115, USA

¹⁰Institute of Evolutionary Biology, University of Edinburgh, Edinburgh, EH9 3JT, UK

¹¹Departamento de Zoologia, Universidade Federal do Rio Grande do Sul, Porto Alegre, Brasil

¹²Biology Program, Faculty of Natural Sciences and Mathematics, Universidad del Rosario, Carrera 24, No. 63C-69, Bogotá, D.C. 111221, Colombia

¹³Laboratoire Ecologie, Evolution, Interactions des Systèmes Amazoniens (LEEISA), USR 3456, Université De Guyane, CNRS Guyane, 275 Route de Montabo, 97334 Cayenne, French Guiana.

¹⁴Department of Biological Sciences, Mississippi State University, Starkville, Mississippi 39762, USA

¹⁵Molecular Sciences and Research Center, University of Puerto Rico, San Juan, Puerto Rico

¹⁶Department of Ecology and Evolutionary Biology, Cornell University, Ithaca, NY 14853, USA

¹⁷Department of Ecology and Evolution, University of Chicago, Chicago, IL 60637, USA

¹⁸CEFE, CNRS, Université Paul Valéry Montpellier 3, EPHE, IRD, Montpellier, France

¹⁹Department of Zoology, University of Cambridge, Cambridge CB2 3EJ, UK

²⁰Smithsonian Tropical Research Institute, Apartado 0843-03092, Panamá, Panama

²¹Department of Mathematics, University of Texas, Austin, TX, 78712, USA

²²10x Genomics, Pleasanton, California 94566, USA

*Correspondence to: nedelman@g.harvard.edu; jmallet@oeb.harvard.edu

Abstract:

We use twenty *de novo* genome assemblies to probe the speciation history and architecture of gene flow in rapidly radiating *Heliconius* butterflies. Our tests to distinguish incomplete lineage sorting from introgression indicate that gene flow has overwritten the original bifurcating evolutionary history of loci across the genome. Introgressed loci are underrepresented in low recombination and gene-rich regions, consistent with the purging of foreign alleles more tightly linked to incompatibility loci. We identify a hitherto unknown inversion that traps a color pattern switch locus. We infer that this inversion was transferred between lineages via introgression and is convergent with a similar rearrangement in another part of the genus. These multiple *de novo* genome sequences enable improved understanding of the importance of introgression and selective processes in adaptive radiation.

One Sentence Summary: Introgression has been a major contributor of genealogical discordance throughout *Heliconius* evolution, varying across the genome with local recombination rate, gene density, and genome architecture.

Main Text: Adaptive radiations play a fundamental role in generating biodiversity. Initiated by key innovations and ecological opportunity, radiation is fueled by niche competition that promotes rapid diversification of species (1). Reticulate evolution may enhance radiation by introducing genetic variation, enabling rapidly emerging populations to take advantage of novel ecological opportunities (2, 3). Diverging from its sister genus *Eueides* ~12 My ago, *Heliconius* radiated in a burst of speciation in the last ~5 My (4). Introgression is well known in *Heliconius*, with widespread reticulate evolution across the genus (5), though this has been disputed (6). Nonetheless, how introgression varies across the genome is known only in one pair of sister lineages (7, 8). Here, we use multiple *de novo* whole genome assemblies to improve the resolution of introgression, incomplete lineage sorting (ILS), and genome architecture in deeper branches of the *Heliconius* phylogeny.

Phylogenetic analysis

We generated 20 *de novo* genome assemblies for species in both major *Heliconius* sub-clades and three additional genera of Heliconiini. Here we align the sixteen highest quality Heliconiini assemblies to two *Heliconius* reference genomes and seven other Lepidoptera genomes, resulting in an alignment of 25 taxa (9). *De novo* assembly provides superior sequence information for low complexity regions, allows for discovery of structural rearrangements, and improves alignment of evolutionarily distant clades (10). Other studies in *Heliconius* have shown a high level of phylogenetic discordance, arguably a result of rampant introgression (4, 5). We attempted to reconstruct a bifurcating species tree by estimating relationships using protein-coding genes, conserved coding regions, and conserved non-coding regions. We generated phylogenies with coalescent-based and concatenation approaches, using both the full Lepidoptera alignment and a restricted, Heliconiini-only sub-alignment. These topologies were largely congruent among analytical approaches, but weakly supported nodes were resolved inconsistently. These approaches therefore failed to resolve the phylogeny of *Heliconius* as a simple bifurcating tree (Fig. 1A, **Erreur ! Source du renvoi introuvable.**).

To determine whether hybridization was a cause of the species tree uncertainty, we calculated Patterson's *D*-statistics (11) for every triplet of the 13 *Heliconius* species, using a member of the sister genus, *Eueides tales*, as outgroup. In 201 of 286 triplets, we observed values significantly different from zero based on block-jackknifing, demonstrating strong evidence for introgression (Erreur ! Source du renvoi introuvable.). However, this test alone yields little quantitative information about admixture. We therefore used phyloNet (12) to infer reticulate phylogenetic networks of these species on the basis of random samples of one hundred 10 kb windows across the alignment. For each sample, we co-estimated all 100 regional gene trees and the overall species network in parallel (12). To improve alignments, we analyzed the *melpomene*-silvaniform group with respect to the *H. melpomene* Hmel2.5 assembly (13) and the *erato-sara* group with respect to the *H. erato demophon* v1 assembly (9, 14). Most species exhibited an admixture event at some point in their history using this method; we confirmed extensive reticulation among silvaniform species and discovered major gene flow events in the *erato-sara* clade. Based on these results, we propose the reticulate phylogenies in Fig. 1B-C.

Correlation of local ancestry with genome architecture

We next analyzed the distribution of tree topologies across the genome, again treating each major clade separately and using its respective reference genome. The *melpomene*-silvaniform group lacked topological consensus, unsurprisingly since introgression, especially of key mimicry loci, is well known from this clade (15). The most common tree topology was found in only 4.3% of windows, with an additional 14 topologies appearing in 1.0-3.4% of windows (Erreur ! Source du renvoi introuvable.-Erreur ! Source du renvoi introuvable.). By contrast, we here focus on the *erato-sara* group, where two topologies dominate (Fig. 2). One (Tree 2, Fig. 2B) matched our bifurcating consensus topology (Fig. 1A) and a recently published tree (4), while the other (Tree 1) differs in that it places *H. hecalesia* and *H. telesiphe* as sisters.

Regions with local topologies discordant from the species tree may have arisen through introgression or ILS. In order to make within-topology locus-by-locus inferences, we developed a statistical test to distinguish between ILS and introgression based on the distribution of internal branch lengths among windows for a given three-taxon subtree, conditional on its topology. We call this method Quantifying Introgression via Branch Lengths (QuIBL). In the absence of introgression, we expect internal branch lengths of triplet topologies discordant with the species tree (due to ILS) to be exponentially distributed. However, if introgression has occurred, their distribution should have that same exponential component, but also include an additional component with a non-zero mode corresponding to the time between the introgression event and the most recent common ancestor of all three species (9). Like other tree-based methods, QuIBL is potentially sensitive to the assumption that each tree is inferred from loci with limited internal recombination (Fig. S75). We therefore chose small (5 kb) windows to reduce the probability of intra-locus recombination breakpoints.

For every triplet in the *erato-sara* clade, we calculate the likelihood that the distribution of internal branch lengths is consistent with introgression or with ILS only. We formally distinguish between these two models using a BIC test with a strict cutoff of $\Delta\text{BIC} > 10$. Consistent with our results from *D*-statistics, we find that 13 of 20 triplets have evidence for introgression (Table S13). For example, in the triplet *H. erato*-*H. hecalesia*-*H. telesiphe*, QuIBL infers that 76% of discordant loci, or 38% of all loci genome-wide are introgressed. Averaging over all triplets, QuIBL estimates

that 71% (67% with BIC filtering) of loci with discordant gene trees have a history of introgression, or 20% (19% with BIC filtering) of all triplet loci, recovering a broad signal of introgression throughout the clade (Equation, S7.7, **Erreur ! Source du renvoi introuvable.**; see (9) for additional discussion).

5

In hybrid populations, individuals have genomic regions that originate from different species and may be incompatible with the recipient genome or with their environment (16). Linked selection causes harmless or even beneficial introgressed loci to be removed along with these deleterious loci if they are tightly linked; this effect depends on the strength of selection and the local recombination rate (17, 18). We therefore expect introgressed loci to be enriched in regions where selection is likely to be weak, such as gene deserts, or in regions of high recombination, where harmless introgressed loci more readily recombine away from linked incompatibility loci.

10

In *Heliconius*, even distant species like *H. erato* and *H. melpomene* have the same number of broadly collinear chromosomes (13), facilitating direct comparisons among species. Furthermore, each chromosome in *Heliconius* has approximately one crossover per chromosome per meiosis in males (there is no crossing over in female *Heliconius*) (14, 19). Chromosomes vary in length, and chromosome size is inversely proportional to recombination rate per base pair (8, 13). We found a strong correlation between the fraction of windows in each chromosome that show a given topology and physical chromosome length (Fig. 3A). Such relationships exist for all 8 trees in Fig. 2B (9), but we focus here on the two most common trees: Tree 1 has a strongly negative correlation with chromosome size ($r^2=0.883$, $t= 11.7$, 18 *d.f.*, $p<0.0001$,) while Tree 2 (concordant with our inferred species tree) has a positive correlation ($r^2=0.726$, $t=6.9$, 18 *d.f.*, $p<0.0001$). Results from QuIBL indicate that 94% of windows that recover a Tree 1 triplet topology are consistent with introgression (**Erreur ! Source du renvoi introuvable.**, **Erreur ! Source du renvoi introuvable.**). The Z (sex) chromosome 21, is strongly enriched for Tree 2, suggesting it may harbor more incompatibility loci than autosomes. Interspecific hybrid females in *Heliconius* are often sterile, conforming to Haldane's Rule, and sex chromosomes have been implicated as particularly important in generating this incompatibility (8, 20-24).

20

25

30

To test whether the pattern we observe among chromosomes is related to differences in recombination, we investigated the relationship between recombination rate and tree topology within chromosomes. Recombination rate declines at the ends of chromosomes (**Erreur ! Source du renvoi introuvable.**), and the species tree (Tree 2) is more abundant in those regions (Fig. 3B). In addition, when windows are grouped by local recombination rate calculated from population genetic data (9, 14), we observe a strong relationship with the recovered topology (Fig. 3C). Finally, we observe a minor enrichment of Tree 1 in regions of very low gene density, but this effect is weak (Fig. 3D) compared to that of recombination. Taken together, these results show that tighter linkage on longer chromosomes, and in lower recombination regions within chromosomes leads to removal of more introgressed variation in those regions. This very strong correlation is consistent with a highly polygenic architecture of incompatibilities between species.

35

40

Introgression of a convergent inversion

The topology block size distribution in the *erato* clade generally decayed exponentially (Fig. 2C), but two unusually long blocks contained minor topologies: one on chromosome 2 (Tree 3, composed of three sub-blocks) and the other on chromosome 15 (Tree 4). Our study of the ~3 Mb

45

topology block on chromosome 2 confirms an earlier finding of an inversion in *H. erato* (13), and we show here that its rare topology is most likely explained by ILS including a long period of ancestral polymorphism (**Erreur ! Source du renvoi introuvable.**).

5 The topology block on chromosome 15 is of particular interest, as it spans *cortex*, a genetic hotspot of wing color pattern diversity in Lepidoptera (25, 26). We hypothesized that this block could be an inversion, as in *H. numata*, where the P_1 'supergene' inversion polymorphism around *cortex* controls color pattern switching among mimicry morphs (27). This block recovers *H. telesiphe* and *H. hecalesia* as a monophyletic subclade, which together are sister to the *sara* clade (Fig. 2B, Tree
10 4). We searched our *de novo* assemblies for contigs that mapped across topology transitions. Taking *H. melpomene* as the standard arrangement, we find clear inversion breakpoints in *H. telesiphe*, *H. hecalesia*, *H. sara*, and *H. demeter*. Conversely, *H. erato*, *H. himera*, and *E. tales* all contain contigs that map in their entirety across the breakpoints (Fig. 4A), implying that they have the ancestral *H. melpomene* arrangement.

15 This chromosome 15 inversion covers almost exactly the same region as the 400 kb P_1 inversion in *H. numata* (25, 27, 28). However, *de novo* contigs from our *H. numata* assembly show that the breakpoints of P_1 are close to but not identical to those of the inversion in the *erato* clade (Fig. 4A). Furthermore, in topologies for *H. numata*, *H. telesiphe*, *H. erato*, and *E. tales* across
20 chromosome 15, not a single window recovered *H. numata* and *H. telesiphe* as a monophyletic subclade, as would be expected if the *erato* group inversion was homologous to P_1 in *H. numata*.

We used QuIBL with the triplet (*H. erato* + *H. telesiphe* + *H. sara*) to elucidate the evolutionary history of this inversion. A small internal branch would suggest ILS while a large internal branch
25 would be more consistent with introgression (Fig. 4B). The average internal branch length in the inversion was much longer than the genome-wide average, corresponding to a 79% probability of introgression (Fig. 4C). If the inversion was polymorphic in the ancestral population for some time, we could also recover a similarly long internal branch (Fig. 4B, center). We distinguish
30 between this longer-term polymorphic scenario and introgression by comparing the genetic distance (D_{XY}) between *H. telesiphe* and *H. sara*, represented by T_3 in Fig. 4B. Normalized D_{XY} (as in Fig. S95) within the inversion is ~25% less than in the rest of the genome. Given that this is a large genomic block, introgression is therefore the most parsimonious explanation for the evolutionary history of the inversion (Fig. 4D) (29).

35 Discussion

Species involved in rapid radiations are prone to hybridization due to frequent geographical overlap with closely related taxa. In both *melpomene* and *erato* clades of *Heliconius*, introgression has overwritten the original bifurcation history of several species across large swaths of the genome, a pattern also observed in *Anopheles* mosquitoes (30). This observation is also consistent
40 with genomic analysis of other rapid radiations characterized by widespread hybridization and introgression, including Darwin's finches (2) and African cichlids (31). In other radiations, the role of introgression is less clear: in *Tamias* chipmunks, widespread introgression of mitochondrial DNA was identified, in contrast to an absence of evidence for nuclear gene flow (32). With few genomic comparisons available to date, it is perhaps too early to say whether introgression is a
45 major feature of adaptive radiations in general, but evidence thus far suggests this to be the case.

Our results raise the question of why some genomic regions cross species boundaries while others do not. In the *erato* clade, we find a strong correlation between recombination rate and introgression probability. Similar associations with topology also exist between sister species in the *melpomene* clade (7). Associations between recombination and introgression in actively hybridizing populations of sword-tail fish (*Xiphophorus*) and monkey flowers (*Mimulus*) support the role of linked selection on a highly polygenic landscape of interspecific incompatibilities (18, 33, 34). Our results establish that this relationship persists and may indeed be strengthened with time since introgression. This may be because while hybridization is ongoing, many introgressed blocks are constantly being re-introduced into the population. Even if linked to weakly deleterious alleles, this genetic material will persist for some time before being purged by linked selection depending on the local recombination rate.

Recombination rate alone cannot account for differential introgression, so we must delve into specific regions to elucidate their function and relevance to speciation. It is critical, therefore, to have tools that can confidently identify introgressed loci, and much effort has gone into developing such methods (11, 35). Our test using internal branch lengths in triplet gene trees is based in coalescent theory and takes advantage of the discriminatory power of a property of gene trees not explicitly accounted for by other methods. QuIBL allows us to assess probability of introgression for each locus in each species triplet (8). Here, we employ this method to identify the evolutionary origin of a convergent inversion that has undergone multiple independent introgression events, and to show that genomic regions with discordant topologies arose mostly through hybridization. Just as sex aids adaptation within species, occasional introgression and recombination among species can have major long-term effects on the genome, contributing variation that could fuel rapid adaptive divergence and radiation.

25

References and Notes

1. D. Schluter, *The Ecology of Adaptive Radiation* (OUP Oxford, 2000).
2. S. Lamichhaney, J. Berglund, M. S. Almén, K. Maqbool, M. Grabherr, A. Martinez-Barrio, M. Promerová, C.-J. Rubin, C. Wang, N. Zamani, B. R. Grant, P. R. Grant, M. T. Webster, L. Andersson, Evolution of Darwin's finches and their beaks revealed by genome sequencing. *Nature* **518**, 371–375 (2015).
3. J. B. Pease, D. C. Haak, M. W. Hahn, L. C. Moyle, Phylogenomics reveals three sources of adaptive variation during a rapid radiation. *PLoS Biol.* **14**, e1002379 (2016).
4. K. M. Kozak, N. Wahlberg, A. F. E. Neild, K. K. Dasmahapatra, J. Mallet, C. D. Jiggins, Multilocus species trees show the recent adaptive radiation of the mimetic *Heliconius* butterflies. *Syst. Biol.* **64**, 505–524 (2015).
5. K. M. Kozak, O. McMillan, M. Joron, C. D. Jiggins, Genome-wide admixture is common across the *Heliconius* radiation. *bioRxiv*, 414201 (2018).
6. A. V. Z. Brower, I. J. G. Orduña, Missing data, clade support and “reticulation”: the molecular systematics of *Heliconius* and related genera (Lepidoptera: Nymphalidae) re-examined. *Cladistics* **34**, 151–166 (2018).
7. S. H. Martin, K. K. Dasmahapatra, N. J. Nadeau, C. Salazar, J. R. Walters, F. Simpson, M. Blaxter, A. Manica, J. Mallet, C. D. Jiggins, Genome-wide evidence for speciation with gene flow in *Heliconius* butterflies. *Genome Research* **23**, 1817–1828 (2013).
8. S. H. Martin, J. W. Davey, C. Salazar, C. D. Jiggins, Recombination rate variation shapes barriers to introgression across butterfly genomes. *PLoS Biol.* **17**, e2006288 (2019).
9. Materials and methods are available as supplementary materials.
10. *Drosophila* 12 Genomes Consortium, Evolution of genes and genomes on the *Drosophila* phylogeny. *Nature* **450**, 203–218 (2007).
11. N. Patterson, P. Moorjani, Y. Luo, S. Mallick, N. Rohland, Y. Zhan, T. Genschoreck, T. Webster, D. Reich, Ancient admixture in human history. *Genetics* **192**, 1065–1093 (2012).
12. D. Wen, L. Nakhleh, Co-estimating reticulate phylogenies and gene trees from multi-locus sequence data. *Syst. Biol.* **61**, 170–457 (2017).
13. J. W. Davey, S. L. Barker, P. M. Rastas, A. Pinharanda, S. H. Martin, R. Durbin, W. O. McMillan, R. M. Merrill, C. D. Jiggins, No evidence for maintenance of a sympatric *Heliconius* species barrier by chromosomal inversions. *Evolution Letters* **1**, 138–154 (2017).
14. S. M. Van Belleghem, P. Rastas, A. Papanicolaou, S. H. Martin, C. F. Arias, M. A. Supple, J. J. Hanly, J. Mallet, J. J. Lewis, H. M. Hines, M. Ruiz, C. Salazar, M. Linares, G. R. P.

- Moreira, C. D. Jiggins, B. A. Counterman, W. O. McMillan, R. Papa, Complex modular architecture around a simple toolkit of wing pattern genes. *Nat. Ecol. Evol.* **1**, 52 (2017).
15. C. D. Jiggins, *The Ecology and Evolution of Heliconius Butterflies* (Oxford University Press, 2017).
- 5 16. J. A. Coyne, H. A. Orr, *Speciation* (Sinauer Associates Incorporated, 2004).
17. D. J. Begun, C. F. Aquadro, Levels of naturally occurring DNA polymorphism correlate with recombination rates in *D. melanogaster*. *Nature* **356**, 519–520 (1992).
18. M. Schumer, C. Xu, D. L. Powell, A. Durvasula, L. Skov, C. Holland, J. C. Blazier, S. Sankararaman, P. Andolfatto, G. G. Rosenthal, M. Przeworski, Natural selection interacts with recombination to shape the evolution of hybrid genomes. *Science* **360**, 656–660 (2018).
- 10 19. J. W. Davey, M. Chouteau, S. L. Barker, L. Maroja, S. W. Baxter, F. Simpson, M. Joron, J. Mallet, K. K. Dasmahapatra, C. D. Jiggins, Major improvements to the *Heliconius melpomene* genome assembly used to confirm 10 chromosome fusion events in 6 million years of butterfly evolution. *G3: Genes/Genomes/Genetics* **6**, 695–708 (2016).
- 15 20. T. Dobzhansky, *Genetics and the Origin of Species* (Columbia University Press, 1937).
21. H. A. Orr, M. Turelli, Dominance and Haldane's rule. *Genetics* **143**, 613–616 (1996).
22. C. D. Jiggins, M. Linares, R. E. Naisbit, C. Salazar, Z. H. Yang, J. Mallet, Sex-linked hybrid sterility in a butterfly. *Evolution* **55**, 1631–1638 (2001).
- 20 23. R. E. Naisbit, C. D. Jiggins, M. Linares, C. Salazar, J. Mallet, Hybrid sterility, Haldane's rule and speciation in *Heliconius cydno* and *H. melpomene*. *Genetics* **161**, 1517–1526 (2002).
24. S. M. Van Belleghem, M. Baquero, R. Papa, C. Salazar, W. O. McMillan, B. A. Counterman, C. D. Jiggins, S. H. Martin, Patterns of Z chromosome divergence among *Heliconius* species highlight the importance of historical demography. *Mol. Ecol.* **27**, 3852–3872 (2018).
- 25 25. M. Joron, R. Papa, M. Beltrán, N. Chamberlain, J. Mavárez, S. Baxter, M. Abanto, E. Bermingham, S. J. Humphray, J. Rogers, H. Beasley, K. Barlow, R. H. ffrench-Constant, J. Mallet, W. O. McMillan, C. D. Jiggins, A conserved supergene locus controls colour pattern diversity in *Heliconius* butterflies. *PLoS Biol.* **4**, e303–10 (2006).
- 30 26. N. J. Nadeau, C. Pardo-Diaz, A. Whibley, M. A. Supple, S. V. Saenko, R. W. R. Wallbank, G. C. Wu, L. Maroja, L. Ferguson, J. J. Hanly, H. Hines, C. Salazar, R. M. Merrill, A. J. Dowling, R. H. ffrench-Constant, V. Llaurens, M. Joron, W. O. McMillan, C. D. Jiggins, The gene *cortex* controls mimicry and crypsis in butterflies and moths. *Nature* **534**, 106–110 (2016).

27. P. Jay, A. Whibley, L. Frezal, M. Á. Rodríguez de Cara, R. W. Nowell, J. Mallet, K. K. Dasmahapatra, M. Joron, Supergene evolution triggered by the introgression of a chromosomal inversion. *Curr. Biol.* **28**, 1839–1845.e3 (2018).
- 5 28. M. Joron, L. Frezal, R. T. Jones, N. L. Chamberlain, S. F. Lee, C. R. Haag, A. Whibley, M. Becuwe, S. W. Baxter, L. Ferguson, P. A. Wilkinson, C. Salazar, C. Davidson, R. Clark, M. A. Quail, H. Beasley, R. Glithero, C. Lloyd, S. Sims, M. C. Jones, J. Rogers, C. D. Jiggins, R. H. ffrench-Constant, Chromosomal rearrangements maintain a polymorphic supergene controlling butterfly mimicry. *Nature* **477**, 203–206 (2011).
- 10 29. F. Roda, F. K. Mendes, M. W. Hahn, R. Hopkins, Genomic evidence of gene flow during reinforcement in Texas *Phlox*. *Mol. Ecol.* **26**, 2317–2330 (2017).
- 15 30. M. C. Fontaine, J. B. Pease, A. Steele, R. M. Waterhouse, D. E. Neafsey, I. V. Sharakhov, X. Jiang, A. B. Hall, F. Catteruccia, E. Kakani, S. N. Mitchell, Y.-C. Wu, H. A. Smith, R. R. Love, M. K. Lawniczak, M. A. Slotman, S. J. Emrich, M. W. Hahn, N. J. Besansky, Extensive introgression in a malaria vector species complex revealed by phylogenomics. *Science* **347**, 1258524–1258524 (2015).
31. J. I. Meier, D. A. Marques, S. Mwaiko, C. E. Wagner, L. Excoffier, O. Seehausen, Ancient hybridization fuels rapid cichlid fish adaptive radiations. *Nat. Commun.* **8**, 14363–11 (2017).
- 20 32. J. M. Good, D. Vanderpool, S. Keeble, K. Bi, Negligible nuclear introgression despite complete mitochondrial capture between two species of chipmunks. *Evolution* **69**, 1961–1972 (2015).
33. Y. Brandvain, A. M. Kenney, L. Flagel, G. Coop, A. L. Sweigart, Speciation and introgression between *Mimulus nasutus* and *Mimulus guttatus*. *PLoS Genet.* **10**, e1004410 (2014).
- 25 34. H. F. Gante, M. Matschiner, M. Malmstrøm, K. S. Jakobsen, S. Jentoft, W. Salzburger, Genomics of speciation and introgression in Princess cichlid fishes from Lake Tanganyika. *Mol. Ecol.* **25**, 6143–6161 (2016).
35. S. H. Martin, J. W. Davey, C. D. Jiggins, Evaluating the use of ABBA-BABA statistics to locate introgressed loci. *Mol. Biol. Evol.* **32**, 244–257 (2015).
- 30 36. The *Heliconius* Genome Consortium, Butterfly genome reveals promiscuous exchange of mimicry adaptations among species. *Nature* **487**, 94–98 (2012).
37. Broad Institute, DISCOVAR: Assemble genomes, find variants. <https://www.broadinstitute.org/software/discovar/blog> (2015).
- 35 38. D. Mapleson, G. Garcia Accinelli, G. Kettleborough, J. Wright, B. J. Clavijo, B. Berger, KAT: a K-mer analysis toolkit to quality control NGS datasets and genome assemblies. *Bioinformatics* **33**, 574–576 (2017).

39. R. Luo, B. Liu, Y. Xie, Z. Li, W. Huang, J. Yuan, G. He, Y. Chen, Q. Pan, Y. Liu, J. Tang, G. Wu, H. Zhang, Y. Shi, Y. Liu, C. Yu, B. Wang, Y. Lu, C. Han, D. W. Cheung, S.-M. Yiu, S. Peng, Z. Xiaoqian, G. Liu, X. Liao, Y. Li, H. Yang, J. Wang, T.-W. Lam, J. Wang, SOAPdenovo2: an empirically improved memory-efficient short-read de novo assembler. *GigaScience* **1**, 18 (2012).
5
40. G. W. Vurture, F. J. Sedlazeck, M. Nattestad, C. J. Underwood, H. Fang, J. Gurtowski, M. C. Schatz, GenomeScope: fast reference-free genome profiling from short reads. *Bioinformatics* **33**, 2202–2204 (2017).
41. G. Marçais, C. Kingsford, A fast, lock-free approach for efficient parallel counting of occurrences of k-mers. *Bioinformatics* **27**, 764–770 (2011).
10
42. A. Smit, R. Hubley, P. Green, RepeatMasker Open-4.0. www.repeatmasker.org (2013).
43. F. A. Simão, R. M. Waterhouse, P. Ioannidis, E. V. Kriventseva, E. M. Zdobnov, BUSCO: assessing genome assembly and annotation completeness with single-copy orthologs. *Bioinformatics* **31**, 3210–3212 (2015).
44. B. Paten, D. Earl, N. Nguyen, M. Diekhans, D. Zerbino, D. Haussler, Cactus: Algorithms for genome multiple sequence alignment. *Genome Research* **21**, 1512–1528 (2011).
15
45. G. Hickey, B. Paten, D. Earl, D. Zerbino, D. Haussler, HAL: a hierarchical format for storing and analyzing multiple genome alignments. *Bioinformatics* **29**, 1341–1342 (2013).
46. M. J. Hubisz, K. S. Pollard, A. Siepel, PHAST and RPHAST: phylogenetic analysis with space/time models. *Brief. Bioinformatics* **12**, 41–51 (2011).
20
47. W. J. Kent, C. W. Sugnet, T. S. Furey, K. M. Roskin, T. H. Pringle, A. M. Zahler, D. Haussler, The human genome browser at UCSC. *Genome Research* **12**, 996–1006 (2002).
48. B. Misof, K. Misof, A Monte Carlo approach successfully identifies randomness in multiple sequence alignments: a more objective means of data exclusion. *Syst. Biol.* **58**, 21–34 (2009).
25
49. P. Kück, ALICUT: a Perlscript which cuts ALISCORE identified RSS. *Department of Bioinformatics, Zoologisches Forschungsmuseum A. Koenig (ZFMK), Bonn, Germany, version 2* (2009).
50. S. Kalyaanamoorthy, B. Q. Minh, T. K. F. Wong, A. von Haeseler, L. S. Jermin, ModelFinder: fast model selection for accurate phylogenetic estimates. *Nat. Methods* **14**, 587–589 (2017).
30
51. L.-T. Nguyen, H. A. Schmidt, A. von Haeseler, B. Q. Minh, IQ-TREE: a fast and effective stochastic algorithm for estimating maximum-likelihood phylogenies. *Mol. Biol. Evol.* **32**, 268–274 (2015).

52. D. T. Hoang, O. Chernomor, A. von Haeseler, B. Q. Minh, L. S. Vinh, UFBoot2: Improving the ultrafast bootstrap approximation. *Mol. Biol. Evol.* **35**, 518–522 (2018).
53. S. Mirarab, R. Reaz, M. S. Bayzid, T. Zimmermann, M. S. Swenson, T. Warnow, ASTRAL: genome-scale coalescent-based species tree estimation. *Bioinformatics* **30**, i541–8 (2014).
- 5 54. P. Kück, K. Meusemann, FASconCAT: Convenient handling of data matrices. *Mol. Phylogenetics Evol* **56**, 1115–1118 (2010).
55. A. R. Quinlan, BEDTools: The Swiss-army tool for genome feature analysis. *Curr. Protoc. Bioinformatics* **47**, 11.12.1–34 (2014).
- 10 56. E. Paradis, K. Schliep, ape 5.0: an environment for modern phylogenetics and evolutionary analyses in R. *Bioinformatics* **9**, 532. (2018).
57. A. J. Page, B. Taylor, A. J. Delaney, J. Soares, T. Seemann, J. A. Keane, S. R. Harris, SNP-sites: rapid efficient extraction of SNPs from multi-FASTA alignments. *Microb. Genom.* **2**, e000056 (2016).
- 15 58. B. Gel, E. Serra, karyoploteR: an R/Bioconductor package to plot customizable genomes displaying arbitrary data. *Bioinformatics* **33**, 3088–3090 (2017).
59. A. H. Chan, P. A. Jenkins, Y. S. Song, Genome-wide fine-scale recombination rate variation in *Drosophila melanogaster*. *PLoS Genet.* **8**, e1003090 (2012).
- 20 60. G. A. Van der Auwera, M. O. Carneiro, C. Hartl, R. Poplin, G. del Angel, A. L. Moonshine, T. Jordan, K. Shakir, D. Roazen, J. Thibault, E. Banks, K. V. Garimella, D. Altshuler, S. Gabriel, M. A. DePristo, From FastQ data to high-confidence variant calls: the genome analysis toolkit best practices pipeline. *Curr. Protoc. Bioinformatics* **43**, 11.10.1–11.10.33 (2013).
61. B. L. Browning, S. R. Browning, Genotype imputation with millions of reference samples. *Am. J. Hum. Genet.* **98**, 116–126 (2016).
- 25 62. R. R. Hudson, 2002, Generating samples under a Wright–Fisher neutral model of genetic variation. *Genome Biol. Evol.* **18**, 337–338 (2002).
63. J. Kelleher, A. M. Etheridge, G. McVean, Efficient coalescent simulation and genealogical analysis for large sample sizes. *PLoS Comput. Biol.* **12**, e1004842 (2016).
- 30 64. A. Rambaut, N. C. Grassly, Seq-Gen: an application for the Monte Carlo simulation of DNA sequence evolution along phylogenetic trees. *Comput. Appl. Biosci.* **13**, 235–238 (1997).
65. S. Guindon, J.-F. Dufayard, V. Lefort, M. Anisimova, W. Hordijk, O. Gascuel, New algorithms and methods to estimate maximum-likelihood phylogenies: assessing the performance of PhyML 3.0. *Syst. Biol.* **59**, 307–321 (2010).

66. H. Thorvaldsdottir, J. T. Robinson, J. P. Mesirov, Integrative genomics viewer (IGV): high-performance genomics data visualization and exploration. *Brief. Bioinformatics* **14**, 178–192 (2013).
- 5 67. N. I. Weisenfeld, S. Yin, T. Sharpe, B. Lau, R. Hegarty, L. Holmes, B. Sogoloff, D. Tabbaa, L. Williams, C. Russ, C. Nusbaum, E. S. Lander, Broad Institute, D. B. Jaffe, Comprehensive variation discovery in single human genomes. *Nat. Genet.* **46**, 1350–1355 (2014).
- 10 68. R. R. Love, N. I. Weisenfeld, D. B. Jaffe, N. J. Besansky, D. E. Neafsey, Evaluation of DISCOVAR de novo using a mosquito sample for cost-effective short-read genome assembly. *BMC Genomics* **17**, 187–10 (2016).
69. B. Clavijo, G. Garcia Accinelli, J. Wright, D. Heavens, K. Barr, L. Yanes, F. Di Palma, W2RAP: a pipeline for high quality, robust assemblies of large complex genomes from short read data. *bioRxiv*, 110999 (2017).
- 15 70. A. V. Zimin, D. Puiu, R. Hall, S. Kingan, B. J. Clavijo, S. L. Salzberg, The first near-complete assembly of the hexaploid bread wheat genome, *Triticum aestivum*. *GigaScience* **6**, 705 (2017).
- 20 71. P. Paajanen, G. Kettleborough, E. López-Girona, M. Giolai, D. Heavens, D. Baker, A. Lister, F. Cugliandolo, G. Wilde, I. Hein, I. Macaulay, G. J. Bryan, M. D. Clark, A critical comparison of technologies for a plant genome sequencing project. *GigaScience* (2019), doi:10.1093/gigascience/giy163.
72. S. Goodwin, J. D. McPherson, W. R. McCombie, Coming of age: ten years of next-generation sequencing technologies. *Nature Reviews Genetics* **17**, 333–351 (2016).
- 25 73. D. A. Ray, J. R. Grimshaw, M. K. Halsey, J. M. Korstian, A. B. Osmanski, K. A. M. Sullivan, K. A. Wolf, H. Reddy, N. Foley, R. D. Stevens, B. Knisbacher, O. Levy, B. Counterman, N. B. Edelman, J. Mallet, Simultaneous TE analysis of 19 Heliconiine butterflies yields novel insights into rapid TE-based genome diversification and multiple SINE births and deaths. *Genome Biol. Evol.* (2019).
- 30 74. V. Ahola, R. Lehtonen, P. Somervuo, L. Salmela, P. Koskinen, P. Rastas, N. Välimäki, L. Paulin, J. Kvist, N. Wahlberg, J. Tanskanen, E. A. Hornett, L. C. Ferguson, S. Luo, Z. Cao, M. A. de Jong, A. Duploux, O.-P. Smolander, H. Vogel, R. C. McCoy, K. Qian, W. S. Chong, Q. Zhang, F. Ahmad, J. K. Haukka, A. Joshi, J. Salojärvi, C. W. Wheat, E. Grosse-Wilde, D. Hughes, R. Katainen, E. Pitkänen, J. Ylinen, R. M. Waterhouse, M. Turunen, A. Vähärautio, S. P. Ojanen, A. H. Schulman, M. Taipale, D. Lawson, E. Ukkonen, V. Mäkinen, M. R. Goldsmith, L. Holm, P. Auvinen, M. J. Frilander, I. Hanski, The Glanville fritillary genome retains an ancient karyotype and reveals selective chromosomal fusions in Lepidoptera. *Nat. Commun.* **5**, 4737 (2014).
- 35 75. R. W. Nowell, B. Elsworth, V. Oostra, B. J. Zwaan, C. W. Wheat, M. Saastamoinen, I. J. Saccheri, A. E. Van't Hof, B. R. Wasik, H. Connahs, M. L. Aslam, S. Kumar, R. J. Challis,

- A. Monteiro, P. M. Brakefield, M. Blaxter, A high-coverage draft genome of the mycalesine butterfly *Bicyclus anynana*. *GigaScience* **6**, 1–7 (2017).
- 5 76. S. Zhan, W. Zhang, K. Niitepõld, J. Hsu, J. F. Haeger, M. P. Zalucki, S. Altizer, J. C. de Roode, S. M. Reppert, M. R. Kronforst, The genetics of monarch butterfly migration and warning colouration. *Nature* **514**, 317–321 (2014).
77. H. Nishikawa, T. Iijima, R. Kajitani, J. Yamaguchi, T. Ando, Y. Suzuki, S. Sugano, A. Fujiyama, S. Kosugi, H. Hirakawa, S. Tabata, K. Ozaki, H. Morimoto, K. Ihara, M. Obara, H. Hori, T. Itoh, H. Fujiwara, A genetic mechanism for female-limited Batesian mimicry in *Papilio* butterfly. *Nat. Genet.* **47**, 405–409 (2015).
- 10 78. Q. Cong, D. Borek, Z. Otwinowski, N. V. Grishin, Skipper genome sheds light on unique phenotypic traits and phylogeny. *BMC Genomics* **16**, 639 (2015).
79. The International Silkworm Genome Consortium, The genome of a lepidopteran model insect, the silkworm *Bombyx mori*. *Insect Biochem. Mol. Biol.* **38**, 1036–1045 (2008).
- 15 80. M. You, Z. Yue, W. He, X. Yang, G. Yang, M. Xie, D. Zhan, S. W. Baxter, L. Vasseur, G. M. Gurr, C. J. Douglas, J. Bai, P. Wang, K. Cui, S. Huang, X. Li, Q. Zhou, Z. Wu, Q. Chen, C. Liu, B. Wang, X. Li, X. Xu, C. Lu, M. Hu, J. W. Davey, S. M. Smith, M. Chen, X. Xia, W. Tang, F. Ke, D. Zheng, Y. Hu, F. Song, Y. You, X. Ma, L. Peng, Y. Zheng, Y. Liang, Y. Chen, L. Yu, Y. Zhang, Y. Liu, G. Li, L. Fang, J. Li, X. Zhou, Y. Luo, C. Gou, J. Wang, J. Wang, H. Yang, J. Wang, A heterozygous moth genome provides insights into herbivory and detoxification. *Nat. Genet.* **45**, 220–225 (2013).
- 20 81. T. C. Bruen, H. Philippe, D. Bryant, A simple and robust statistical test for detecting the presence of recombination. *Genetics* **172**, 2665–2681 (2006).
82. B. M. Peter, Admixture, population structure, and F-statistics. *Genetics* **202**, 1485–1501 (2016).
- 25 83. S. Zairis, H. Khiabani, A. J. Blumberg, R. Rabadan, Genomic data analysis in tree spaces. *arxiv.org* (2016).
84. S. H. Martin, M. Möst, W. J. Palmer, C. Salazar, W. O. McMillan, F. M. Jiggins, C. D. Jiggins, Natural selection and genetic diversity in the butterfly *Heliconius melpomene*. *Genetics* **203**, 525–541 (2016).
- 30 85. J. Wakeley, *Coalescent Theory* (Roberts and Co, 2008).
86. F. de Mendiburu, *Una herramienta de análisis estadístico para la investigación agrícola* (Universidad Nacional de Ingeniería, Lima, 2009).
87. A. Pinharanda, S. H. Martin, S. L. Barker, J. W. Davey, C. D. Jiggins, The comparative landscape of duplications in *Heliconius melpomene* and *Heliconius cydno*. *Heredity* **118**, 78–87 (2017).
- 35

88. L. Nakhleh, A metric on the space of reduced phylogenetic networks. *IEEE/ACM Trans Comput Biol Bioinform* **7**, 218–222 (2010).

Acknowledgments: We thank the Harvard FAS Research Computing team and the Smithsonian Institution for their support. Conversations with S. Martin were instrumental in developing our thinking around recombination rate. We also thank J. Edelman for assistance with the Scaffolding With DISCOVAR pipeline and J. Zhu and L. Nakhleh for their guidance with the PhyloNet toolkit. We thank E. Harney for assistance with qpGraph, as well as N. Rosser, F. Seixas, T. Xiong, P. Muralidhar and C. Veller for illuminating discussions. **Funding:** This project was funded by a SPARC Grant from the Broad Institute of Harvard and MIT and startup and studentship funds from Harvard University for JM and NBE. Additional funding through NSF grant DGE1745303 to MM; BBSRC, Core Strategic Programme Grant BB/CSP17270/1 at the Earlham Institute for BC, GGA, and FDP; a Herchel Smith Postdoctoral Research Fellowship and a Smithsonian Tropical Research Institute Fellowship for JWD; NSF grant OIA 1736026 to BC and RP; Brazilian National Council for Scientific and Technological Development" (CNPq) grant 309853/2014-1 to GRPM; Fondos Concursables Universidad del Rosario 2016-PIN-2017-001 to CS; Marie Skłodowska-Curie fellowship (FITINV, N 655857) and NSERC fellowship for MC; NERC award UKSBS PR18037 to MB; NSF grant IOS-1656514 to RDR; NSF grant IOS-1656389 to RP; NERC NE/K012886/1 to KKD; NSF grant IOS-1452648 and NIH grant GM108626 to MK; MJ is supported by French National Research Agency: ANR-12-JSV7-0005-HybEvol and ANR-18-CE02-0019-Supergene. AB was supported by NIH grants 5U54CA193313 and GG010211-R01-HIV, and AFOSR grant FA9550-18-1-0415. DEN was supported in part by Federal funds from the National Institute of Allergy and Infectious Diseases, National Institutes of Health, Department of Health and Human Services, under Grant Number U19AI110818 to the Broad Institute. DBJ's work on *DISCOVAR de novo* was funded in part with federal funds from the National Human Genome Research Institute, US National Institutes of Health, US Department of Health and Human Services, under grants R01HG003474 and U54HG003067. LepBase development was supported by BBSRC grants BB/K020161/1 and BB/R015325/1. **Author contributions:** NBE, NP, DEN, RC, SK, MB, RDR, KKD, MK, MJ, CDJ, WOM, DJ, and JM conceived the project; NBE, PBF, MM, BC, DJ, and JM designed experiments; JD, GM, CS, MC, BAC, RDR, KKD, MJ, CDJ, WOM, and JM supplied specimens and extracted DNA; DJ, BC, GGA, and FDP assembled genomes, PBF inferred species trees; NBE performed reference gap filling, phylogenetic network, local gene tree, recombination rate, and genome structure analyses; JD and SVB generated linkage maps, MM, JW, and AB developed the branch length test; NBE and JM wrote and edited the manuscript with input from all authors. **Competing interests:** Authors declare no competing interests. **Data and materials availability:** Reads generated are available in the SRA, BioProject PRJNA531399. Genome assemblies are available on LepBase (<http://lepbase.org>). The full multi-species, whole genome alignment, as well as sub-alignments for windows and their respective inferred phylogenies are available on Dryad, DOI 10.5061/dryad.b7bj832. Also on Dryad are configuration files for progressiveCactus, the inferred LD recombination map for *H. erato*, loci used for phyloNet, and repeatMasker output for all assemblies. All code used to analyze data is available on Zenodo repositories, DOIs 10.5281/zenodo.3286366 and 10.5281/zenodo.2653677.

Supplementary Materials:

Materials and Methods

Fig.s S1- S95

Tables S1- S14

References (36-88)

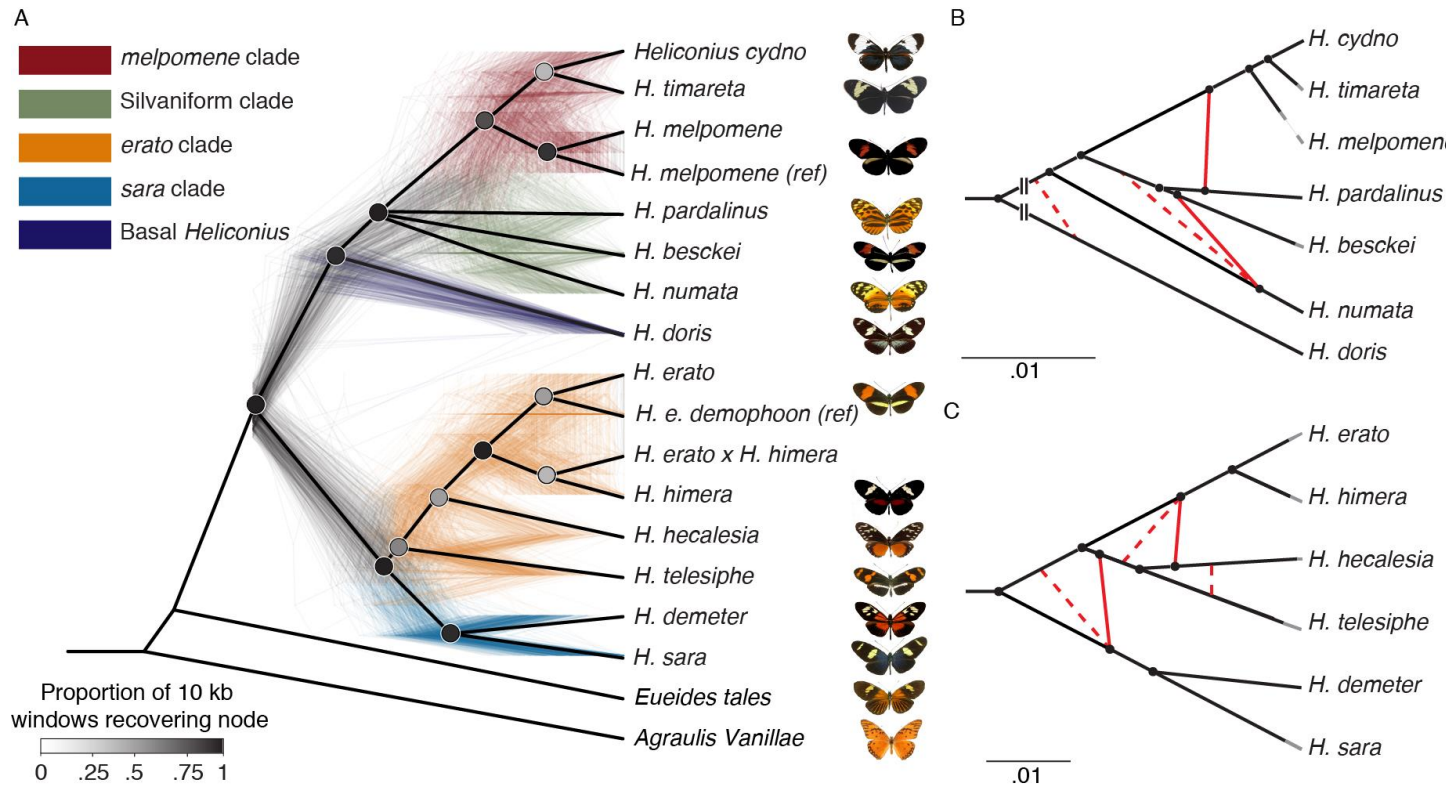


Fig. 1: Phylogeny and phylogenetic networks of *Heliconius* show lack of support for bifurcating tree. **A.** All nodes resolved in a majority of species trees are shown in this cladogram (heavy black lines), while the poorly resolved silvaniform clade is collapsed as a polytomy (**Erreur! Source du renvoi introuvable.**). The 500 colored trees were sampled from 10 kb non-overlapping windows and constructed with maximum likelihood. **B, C.** High-confidence tree structure (black) and introgression events (red) are shown as solid lines. Dashed red lines indicate weakly supported introgression events. Grey branch ends are cosmetic. The *melpomene*-silvaniform clade is shown in **B**, the *erato*-*sara* clade in **C**. Euclidean lengths of solid black lines are proportional to genetic distance along the branches. Scale bars in units of substitutions per site. Breaks at the base in **B** indicate that the branch leading to *H. doris* has been shortened for display.

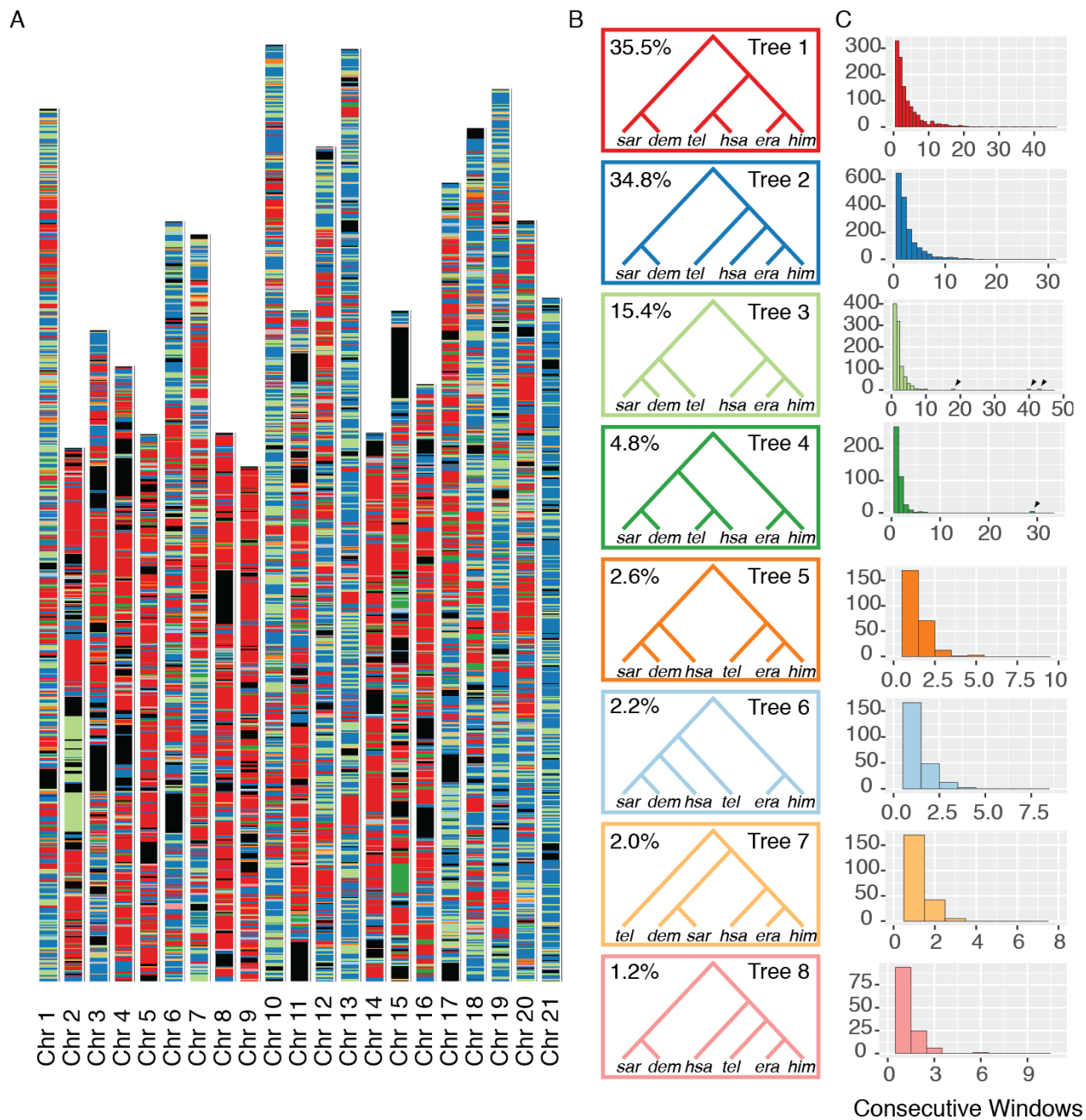


Fig. 2: Local evolutionary history in the *erato-sara* clade is heterogeneous across the genome.

A. Each bar represents a chromosome, in terms of the *H. erato* reference (14). Colored bands represent tree topologies of each 50 kb window; colors correspond to the topologies in **B**, with black regions showing missing data. **B.** The eight most common trees are shown. The value in the top left corner is the percentage of all 50 kb windows that recover that topology. **C.** Each histogram corresponds to the topology of the same color in **B**, and shows the distribution of the number of consecutive 50 kb windows with that topology. Arrows indicate long blocks in inversions.

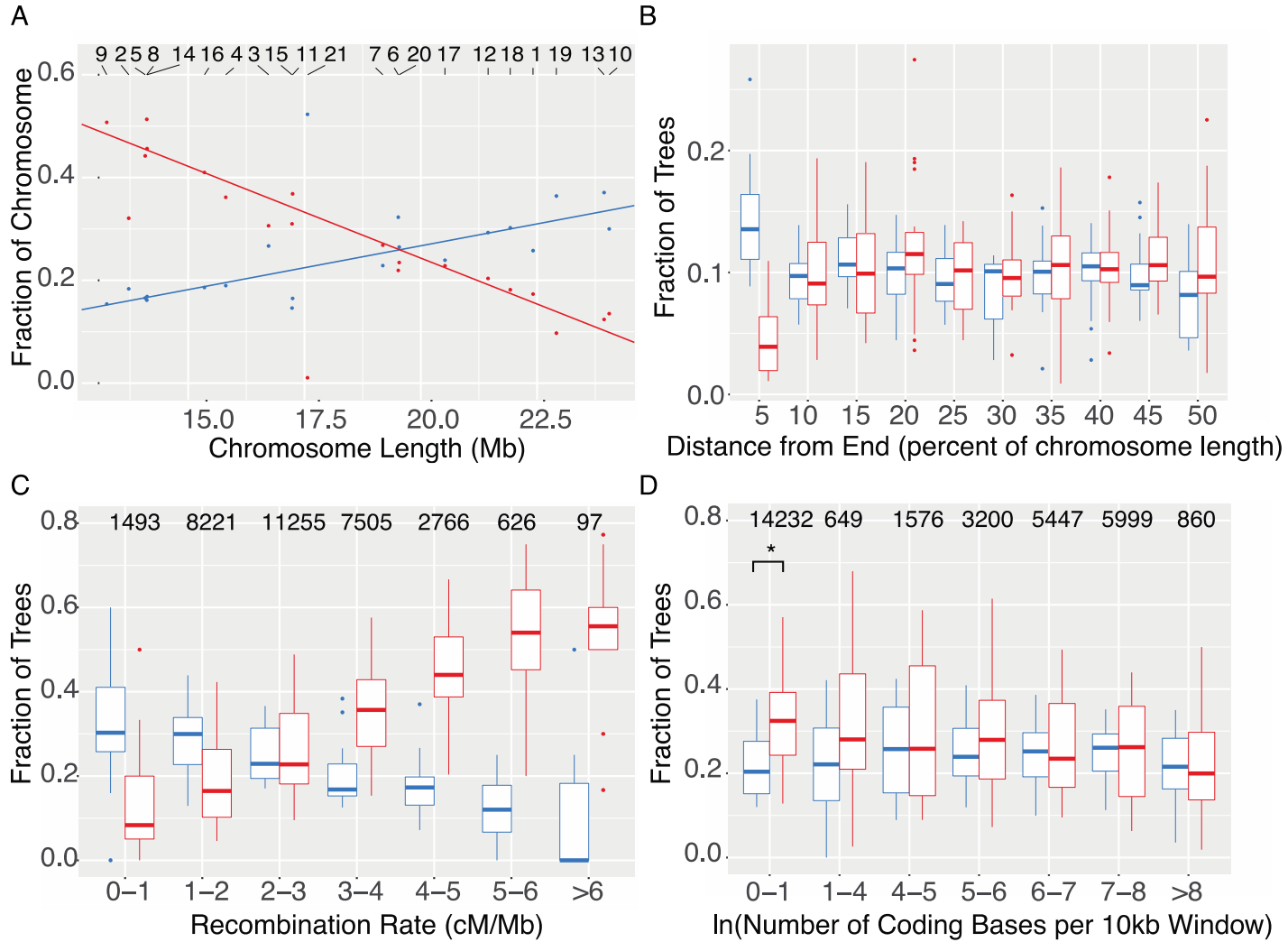


Fig. 3: Chromosomal architecture is strongly correlated with local topology.

Tree 1 is shown in red, and Tree 2 is shown in blue, as in Fig. 2. **A.** Tree 1 shows a negative relationship with chromosome size, while Tree 2 shows a positive relationship. Lines are linear regressions with chromosome 21 excluded. Numbers along top indicate chromosome number. **B.** Each chromosome was divided into 10 equally sized bins, and the occupancy of each topology in each bin was calculated as the number of windows that recovered the topology in the bin divided by the number of windows that recovered the topology in the chromosome. **C.** Windows are binned by recombination rate, and boxes show the fraction of each tree in each bin for each chromosome separately. Numbers above boxes are the number of windows in each bin. **D.** Boxes show the relationship of tree topology with coding density. Asterisk denotes significance at 5% level (paired t-test, $p < 0.025$). In all boxplots, central line is median, box edges are first and third quartile, and whiskers extend to the largest value no further than $1.5 \times$ (inter-quartile range).

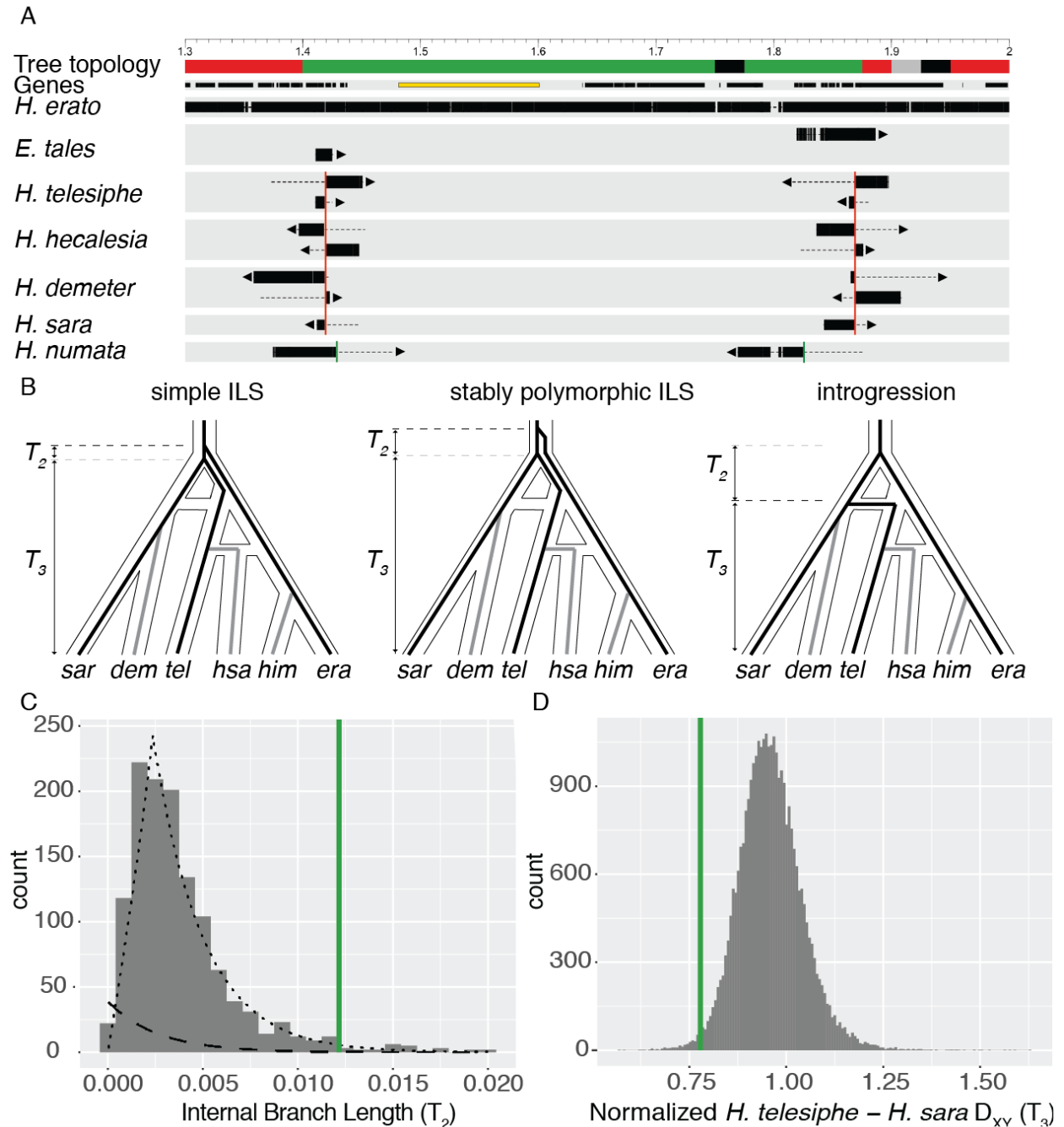


Fig. 4: Parallel evolution of a major inversion at the *cortex* supergene locus.

A. Map of 1.7 Mb region on chromosome 15. Coordinates are in terms of Hmel 2.5, and ticks are in Mb. Tree topology colors correspond to those in Fig. 2. Genes are shown as black rectangles; *cortex* is highlighted in yellow. Each line shows the mapping of a single contig. Aligned sections of each contig are shown as thick bars, while unaligned sections are shown as dotted lines. Arrows indicate the strand of the alignment. The *H. erato* group breakpoints are shown with red vertical lines, while the *H. numata* breakpoints are shown with green vertical lines. **B.** Evolutionary hypotheses consistent with the topology observed in this inversion in the context of the previously estimated phylogenetic network. The three species used in the triplet gene tree method – *H. erato*, *H. telesiphe*, and *H. sara* – are shown as black lines, while lineages not included are shown as grey lines. **C.** Histogram of internal branch lengths (T_2) in windows with the topology *H. erato*, (*H. telesiphe*, *H. sara*). The inferred ILS distribution is shown as a

dashed line, and the inferred introgression distribution is shown as a dotted line. The average internal branch length in the inversion is shown as a green vertical line. **D.** Histogram of normalized $D_{XY}(T_3)$ between *H. telesiphe* and *H. sara*. Mean normalized D_{XY} in the inversion is shown as a green vertical line.

