



**HAL**  
open science

# Hypercapnia modulates cAMP signalling and cystic fibrosis transmembrane conductance regulator-dependent anion and fluid secretion in airway epithelia

Mark J. Turner, Vinciane Saint-Criq, Waseema Patel, Salam H. Ibrahim, Bernard Verdon, Christopher Ward, James P. Garnett, Robert Tarran, Martin J. Cann, Michael A. Gray

► **To cite this version:**

Mark J. Turner, Vinciane Saint-Criq, Waseema Patel, Salam H. Ibrahim, Bernard Verdon, et al.. Hypercapnia modulates cAMP signalling and cystic fibrosis transmembrane conductance regulator-dependent anion and fluid secretion in airway epithelia. *The Journal of Physiology*, 2016, 594 (6), pp.1643-1661. 10.1113/JP271309 . hal-02394656

**HAL Id: hal-02394656**

**<https://hal.science/hal-02394656v1>**

Submitted on 4 Dec 2019

**HAL** is a multi-disciplinary open access archive for the deposit and dissemination of scientific research documents, whether they are published or not. The documents may come from teaching and research institutions in France or abroad, or from public or private research centers.

L'archive ouverte pluridisciplinaire **HAL**, est destinée au dépôt et à la diffusion de documents scientifiques de niveau recherche, publiés ou non, émanant des établissements d'enseignement et de recherche français ou étrangers, des laboratoires publics ou privés.



Distributed under a Creative Commons Attribution 4.0 International License

# Hypercapnia modulates cAMP signalling and cystic fibrosis transmembrane conductance regulator-dependent anion and fluid secretion in airway epithelia

Mark J. Turner<sup>1,5</sup>, Vinciane Saint-Criq<sup>1</sup>, Waseema Patel<sup>1</sup>, Salam H. Ibrahim<sup>1</sup>, Bernard Verdon<sup>1</sup>, Christopher Ward<sup>2</sup>, James P. Garnett<sup>1</sup>, Robert Tarran<sup>3</sup>, Martin J. Cann<sup>4</sup> and Michael A. Gray<sup>1</sup>

<sup>1</sup>Institute for Cell & Molecular Biosciences, The Medical School, Newcastle University, Framlington Place, Newcastle upon Tyne NE2 4HH, UK

<sup>2</sup>Institute for Cellular Medicine, The Medical School, Newcastle University, Framlington Place, Newcastle upon Tyne NE2 4HH, UK

<sup>3</sup>Marsico Lung Institute, University of North Carolina, Chapel Hill, NC 27599, USA

<sup>4</sup>School of Biological and Biomedical Sciences, Durham University, South Road, Durham DH1 3LE, UK

<sup>5</sup>Department of Physiology, McIntyre Medical Sciences Building, McGill University, 3655 Promenade Sir William Osler, Montreal, Quebec, Canada, H3G 1Y6

## Key points

- Raised arterial blood CO<sub>2</sub> (hypercapnia) is a feature of many lung diseases.
- CO<sub>2</sub> has been shown to act as a cell signalling molecule in human cells, notably by influencing the levels of cell signalling second messengers: cAMP and Ca<sup>2+</sup>.
- Hypercapnia reduced cAMP-stimulated cystic fibrosis transmembrane conductance regulator-dependent anion and fluid transport in Calu-3 cells and primary human airway epithelia but did not affect cAMP-regulated HCO<sub>3</sub><sup>-</sup> transport *via* pendrin or Na<sup>+</sup>/HCO<sub>3</sub><sup>-</sup> cotransporters.
- These results further support the role of CO<sub>2</sub> as a cell signalling molecule and suggests CO<sub>2</sub>-induced reductions in airway anion and fluid transport may impair innate defence mechanisms of the lungs.

**Abstract** Hypercapnia is clinically defined as an arterial blood partial pressure of CO<sub>2</sub> of above 40 mmHg and is a feature of chronic lung disease. In previous studies we have demonstrated that hypercapnia modulates agonist-stimulated cAMP levels through effects on transmembrane adenylyl cyclase activity. In the airways, cAMP is known to regulate cystic fibrosis transmembrane conductance regulator (CFTR)-mediated anion and fluid secretion, which contributes to airway surface liquid homeostasis. The aim of the current work was to investigate if hypercapnia could modulate cAMP-regulated ion and fluid transport in human airway epithelial cells. We found that acute exposure to hypercapnia significantly reduced forskolin-stimulated elevations in intracellular cAMP as well as both adenosine- and forskolin-stimulated increases in CFTR-dependent transepithelial short-circuit current, in polarised cultures of Calu-3 human airway cells. This CO<sub>2</sub>-induced reduction in anion secretion was not due to a decrease in HCO<sub>3</sub><sup>-</sup> transport given that neither a change in CFTR-dependent HCO<sub>3</sub><sup>-</sup> efflux nor Na<sup>+</sup>/HCO<sub>3</sub><sup>-</sup> cotransporter-dependent HCO<sub>3</sub><sup>-</sup> influx were CO<sub>2</sub>-sensitive. Hypercapnia also reduced the volume of forskolin-stimulated fluid secretion over 24 h, yet had no effect on the HCO<sub>3</sub><sup>-</sup> content of the secreted fluid. Our data reveal that hypercapnia reduces CFTR-dependent, electrogenic Cl<sup>-</sup> and fluid secretion, but not CFTR-dependent HCO<sub>3</sub><sup>-</sup> secretion, which highlights a differential sensitivity of Cl<sup>-</sup> and HCO<sub>3</sub><sup>-</sup> transporters to raised CO<sub>2</sub> in Calu-3 cells. Hypercapnia also reduced forskolin-stimulated CFTR-dependent anion secretion in primary human airway epithelia. Based on current models of airways biology, a reduction in fluid secretion, associated with hypercapnia, would be predicted to have important consequences for airways hydration and the innate defence mechanisms of the lungs.

(Received 17 July 2015; accepted after revision 5 November 2015; first published online 17 November 2015)

**Corresponding author** Michael Gray: Institute for Cell & Molecular Biosciences, The Medical School, Newcastle University, Framlington Place, Newcastle upon Tyne NE2 4HH, UK. Email: m.a.gray@ncl.ac.uk.

**Abbreviations** CF, cystic fibrosis; CFTR, cystic fibrosis transmembrane conductance regulator;  $I_{sc}$ , short circuit current; NBC,  $\text{Na}^+/\text{HCO}_3^-$  cotransporter; NHE,  $\text{Na}^+/\text{H}^+$  exchanger;  $\text{pH}_i$ , intracellular pH;  $\text{pH}_e$ , extracellular pH; PKA, protein kinase A; sAC, soluble adenylyl cyclase; tmAC, transmembrane adenylyl cyclase;  $V_{te}$ , transepithelial voltage.

## Introduction

Carbon dioxide constitutes 0.04% by volume of the Earth's atmosphere (van der Laan-Luijkx *et al.* 2013) and has major roles in plant, prokaryote and animal biology (Cummins *et al.* 2014). In plants,  $\text{CO}_2$  is used to synthesise sugars during photosynthesis whilst in animals, although  $\text{CO}_2$  is a waste product of cellular respiration, it also has an important role in maintaining plasma pH via its buffering effect on  $\text{HCO}_3^-$  (Marques *et al.* 2003) as well as stimulation of peripheral and central chemoreceptors to regulate ventilation (Somers *et al.* 1989; Guyenet *et al.* 2010). Elevated  $\text{CO}_2$  in arterial blood (hypercapnia) is associated with lung disease in humans (Lourenco & Miranda, 1968; Prin *et al.* 2002), yet the effects of hypercapnia in human physiology are not fully understood. In mammals, recent studies have provided strong evidence that  $\text{CO}_2$  can act as a *bona fide* cell signalling molecule, and that changes in  $\text{CO}_2$  alter the activity of a variety of membrane transporters, including connexin 26 (Huckstepp *et al.* 2010a,b; Meigh *et al.* 2013), the epithelial  $\text{Na}^+/\text{HCO}_3^-$  cotransporter (NBC) (Adijanto *et al.* 2009), inwardly rectifying  $\text{K}^+$  channels (Huckstepp & Dale, 2011) and the  $\text{Na}^+/\text{K}^+$ -ATPase (Briva *et al.* 2007; Vadasz *et al.* 2008). The action of  $\text{CO}_2$  on membrane transporters has been shown to involve different mechanisms. For instance,  $\text{CO}_2$ -dependent downregulation of  $\text{Na}^+/\text{K}^+$ -ATPase activity specifically involves the endocytosis of the  $\alpha$  subunit of the  $\text{Na}^+/\text{K}^+$ -ATPase, demonstrating that  $\text{CO}_2$  can alter surface expression of ion transporters (Briva *et al.* 2007). Alternatively,  $\text{CO}_2$  directly modulates connexin 26 via carbamylation, a post-translational modification whereby a covalent bond forms between the carbon in  $\text{CO}_2$  and a primary amine group of the target protein (Meigh *et al.* 2013). In addition,  $\text{CO}_2$  also has reported effects on key cell second messengers involved in membrane transporter regulation, specifically cAMP and  $\text{Ca}^{2+}$  (Cann *et al.* 2003; Cann, 2004). cAMP is synthesised from ATP, a reaction catalysed by adenylyl cyclase, of which there exists both membrane-bound transmembrane adenylyl cyclase (tmAC) and the soluble adenylyl cyclase (sAC) in mammals (Buck *et al.* 1999). Our laboratory has previously shown that the activity of a recombinant, catalytically active mammalian tmAC, expressed in HEK 293T cells, was significantly higher in cells exposed to 5%  $\text{CO}_2$  compared to those exposed to 0.03%  $\text{CO}_2$ ,

demonstrating that tmAC is sensitive to changes in  $\text{CO}_2$  (Townsend *et al.* 2009). This study also showed that tmAC was sensitive to  $\text{CO}_2$  but not  $\text{HCO}_3^-$  *in vivo* and *in vitro*, supporting previous findings that first proposed tmAC activity was only sensitive to  $\text{CO}_2$  and not inorganic carbon *per se* (Hammer *et al.* 2006). More recently, we have shown that incubating OK cells (a model of human proximal tubule cells) in 10%  $\text{CO}_2$  caused a significant reduction in both forskolin and parathyroid hormone-stimulated increases in intracellular cAMP ( $[\text{cAMP}]_i$ ) compared to levels measured under normocapnic conditions of 5%  $\text{CO}_2$  (Cook *et al.* 2012). The decrease in cAMP correlated with an enhanced activity of the  $\text{Na}^+/\text{H}^+$  exchanger (NHE) 3, a transporter known to be negatively regulated by cAMP/protein kinase A (PKA), thus providing evidence that hypercapnia was able to modulate cAMP-regulated transporters in human epithelial cells. This work further showed that the effect of raised  $\text{CO}_2$  on cAMP was dependent on an  $\text{IP}_3$ -dependent release of  $\text{Ca}^{2+}$  which, in turn, led to an inhibition in tmAC activity, thereby demonstrating that  $\text{CO}_2$  affected  $\text{Ca}^{2+}$  as well as cAMP signalling. These data supported earlier studies that demonstrated  $\text{CO}_2$  modulated  $\text{Ca}^{2+}$  signalling in other mammalian and human cells (Nishio *et al.* 2001; Bouyer *et al.* 2003; Briva *et al.* 2011).

In the airways, cAMP plays a major role in regulating the volume and composition of the airway surface liquid (ASL). In the upper airways, ASL secretion occurs predominantly from serous cells of the submucosal glands (SMGs). Studies on intact SMG secretions as well as SMG-derived secretory cell lines, such as Calu-3, have found that elevations in intracellular cAMP stimulate cystic fibrosis transmembrane conductance regulator (CFTR)-dependent  $\text{Cl}^-$ ,  $\text{HCO}_3^-$  and fluid transport (Lee *et al.* 1998; Devor *et al.* 1999; Joo *et al.* 2002; Krouse *et al.* 2004; Ballard *et al.* 2006; Ianowski *et al.* 2007; Lee & Foskett, 2010; Garnett *et al.* 2011; Huang *et al.* 2012; Shan *et al.* 2012). Efficient anion secretion in the airways is paramount to maintain ASL hydration and pH, as well as efficient mucus secretion and expansion (Garcia *et al.* 2009; Chen *et al.* 2010; Gustafsson *et al.* 2012; Ridley *et al.* 2014). Loss of functional expression of CFTR at the apical membrane of  $\text{HCO}_3^-$ -secreting epithelia underlies the hereditary disease cystic fibrosis (CF) and airways dehydration and impaired ASL alkalinisation have been reported in CF airways (Coakley *et al.* 2003; Song *et al.* 2006; Boucher, 2007) consistent with a key role for CFTR

in mediating airway  $\text{HCO}_3^-$  secretion. Furthermore, it has been shown that the acidic ASL found in CF pigs compromises the ability to kill airway pathogens (Pezzulo *et al.* 2012) and provides a plausible explanation as to why CF patients are susceptible to airway bacterial colonisation.

Given the previously reported findings from our laboratory that hypercapnia modulated cAMP signalling in renal epithelial cells (Cook *et al.* 2012), we hypothesised that hypercapnia would also affect airway epithelial cell function. Our results show that hypercapnia reduced cAMP levels in Calu-3 cells and this correlated with a drop in cAMP-dependent anion secretion. The reduction in anion secretion appeared primarily due to a reduction in  $\text{Cl}^-$  transport, given that both CFTR-dependent  $\text{HCO}_3^-$  efflux *via* pendrin, and NBC-dependent  $\text{HCO}_3^-$  import were unaffected by hypercapnia. Furthermore, hypercapnia also reduced the volume of cAMP-stimulated fluid secretion without affecting the  $\text{HCO}_3^-$  content of the fluid, implying that  $\text{Cl}^-$  secretion and  $\text{HCO}_3^-$  secretion have differential sensitivities to hypercapnia. Hypercapnia also reduced cAMP-stimulated anion secretion in primary human bronchial epithelial layers, indicating this effect of  $\text{CO}_2$  would be predicted to occur *in vivo*. Our results therefore demonstrate that  $\text{CO}_2$  acts as a signalling molecule in human airway epithelia to downregulate anion and fluid secretion.

## Methods

### Calu-3 cell culture

The human serous cell line, Calu-3 (Shen *et al.* 1994), was grown in Eagle's minimum essential medium supplemented with 10% (v/v) fetal calf serum, 1% (v/v) non-essential amino acids, 2 mM L-glutamine, 100 U ml<sup>-1</sup> penicillin and 100  $\mu\text{g}$  ml<sup>-1</sup> streptomycin. Cells were incubated at 37°C in humidified air containing 5% (v/v)  $\text{CO}_2$  and were used between passage 20 and 50. Unless otherwise stated, 250,000 cells were seeded onto either 12 mm Costar Transwells or 12 mm Snapwells, 0.4  $\mu\text{m}$  pore size, polyester membrane inserts, and grown under submerged conditions with 500  $\mu\text{l}$  growth media applied to the apical compartment of membrane inserts. Transepithelial electrical resistance (TEER) was routinely measured using an epithelial voltohmmeter (WPI, Hitchin, UK) and cells generally reached a confluent monolayer, with a TEER of above 600  $\Omega$  cm<sup>-2</sup> after 6 days of growth on Transwell inserts. Experiments were performed 9–13 days after seeding.

### Primary human bronchial epithelial cell culture

Ethical approval was granted for this work from Newcastle and North Tyneside 2 [Min Ref: 2001/179]. Differentiated

primary bronchial epithelial cells were derived from bronchial brushings taken from lung transplant recipients during surveillance bronchoscopy as previously described (Forrest *et al.* 2005). These were grown in a  $\text{CO}_2$  incubator (37°C; 5%  $\text{CO}_2$ ) to 90% confluence using bronchial epithelial growth medium with supplements (BEGM, Lonza, Tewkesbury, UK) in T25 flasks pre-coated with 32  $\mu\text{g}$  ml<sup>-1</sup> collagen. Cells were passaged using a standard trypsin/EDTA technique and cryopreserved for future use. After reconstitution, cells were again expanded to near confluence in T25 flasks, before being seeded onto collagen-coated 12 mm Costar Snapwells at a density of 100,000 cells per membrane in 0.5 ml BEGM, with 2 ml of this medium applied to the basal chamber. Confluence was reached after 72 h, at which point the cell culture was taken to the air–liquid interface (ALI). Here, the medium above the cells was removed completely, and the cells were subsequently fed only from the basal chamber with an ALI medium as described by Fulcher *et al.* (2005). Ciliogenesis was first observed at 14 days at the ALI, and short-circuit current measurements were performed 30–35 days after growth at the ALI.

### Short-circuit current measurements

Cells were grown on Snapwell inserts and mounted into a Ussing chamber in which each chamber was connected to a calomel voltage sensing electrode and an  $\text{AgCl}_2$  current sensing electrode by 3 M KCl salt bridges containing 3% (w/v) agar. Cells were bathed in 7.5 ml Krebs solution and continually gassed with either 5% (v/v)  $\text{CO}_2$ /95% (v/v)  $\text{O}_2$  for control conditions or 10% (v/v)  $\text{CO}_2$ /90% (v/v)  $\text{O}_2$  to induce hypercapnia. To measure the short circuit current ( $I_{\text{sc}}$ ), cells were clamped at 0 mV using a DVC-1000 Voltage/Current Clamp (WPI) and a Powerlab 1200 feedback amplifier (AD Instruments, Oxford, UK) injected the appropriate current to clamp transepithelial voltage ( $V_{\text{te}}$ ) to 0 mV, which was recorded as the  $I_{\text{sc}}$  using Scope 3 software (AD Instruments). To monitor transepithelial resistance ( $R_{\text{te}}$ ), a 2 s, 10 mV pulse was applied every 30 s.

### Intracellular pH measurements

Calu-3 cells were grown on Transwell inserts and loaded with the pH-sensitive, fluorescent dye BCECF-AM (10  $\mu\text{M}$ ) for 1 h in a NaHEPES buffered solution at 37°C. Cells were mounted on to the stage of a Nikon fluor inverted microscope and perfused with a modified Krebs solution gassed with either 5% (v/v)  $\text{CO}_2$ /95% (v/v)  $\text{O}_2$  or 10% (v/v)  $\text{CO}_2$ /90% (v/v)  $\text{O}_2$ . Solutions were perfused across the apical and basolateral membranes at 37°C at a speed of 3 ml min<sup>-1</sup> (apical) and 6 ml min<sup>-1</sup> (basolateral). Intracellular pH ( $\text{pH}_i$ ) was measured using a Life Sciences Microfluorimeter System in which cells

were alternately excited at 490 and 440 nm wavelengths every 1.024 s with emitted light collected at 510 nm. The ratio of 490 to 440 nm emission was recorded using PhoCal 1.6 b software and calibrated to  $\text{pH}_i$  using the high  $\text{K}^+$ /nigericin technique (Hegyí *et al.* 2003) in which cells were exposed to high  $\text{K}^+$  solutions containing  $10 \mu\text{M}$  nigericin, set to a desired  $\text{pH}_i$ , ranging from 6.6 to 8.4. Total buffering capacity ( $\beta_{\text{tot}}$ ) was calculated by addition of the intrinsic buffering capacity ( $\beta_i$ ) to the buffering capacity of the  $\text{CO}_2$ - $\text{HCO}_3^-$  buffer system ( $\beta_{\text{HCO}_3^-}$ ) in which  $\beta_i$  was calculated using the  $\text{NH}_4^+$  technique as described by Roos and Boron (1981). For analysis of  $\text{pH}_i$  measurements,  $\Delta\text{pH}_i$  was determined by calculating the mean  $\text{pH}_i$  over 60 s resulting from treatment. The rate of  $\text{pH}_i$  change ( $\Delta\text{pH}_i/\Delta t$ ) was determined by performing a linear regression over a period of at least 30 s which was converted to a transmembrane  $\text{HCO}_3^-$  flux [ $-J(B)$ ] by multiplying  $\Delta\text{pH}_i/\Delta t$  by  $\beta_{\text{tot}}$ .

### Radiolabelled cAMP assay

Calu-3 cells were cultured in Corning 12-well plates at an initial seeding density of  $3 \times 10^5$  cells per well and used at approximately 80% confluency. Cells were loaded with  $2 \mu\text{Ci ml}^{-1}$  [ $^3\text{H}$ ]-adenine and incubated for 2 h at  $37^\circ\text{C}$  in humidified air containing 5% (v/v)  $\text{CO}_2$ . Cells were then washed twice with PBS and incubated for a further 30 min at  $37^\circ\text{C}$  in humidified air containing 5% (v/v)  $\text{CO}_2$ /95% (v/v)  $\text{O}_2$  (normocapnic controls) or 10% (v/v)  $\text{CO}_2$ /90% (v/v)  $\text{O}_2$  (hypercapnia). Incubation was performed in growth medium containing 1 mM 3-isobutyl-1-methylxanthine (IBMX) that had been pre-gassed with the appropriate  $\text{CO}_2$  concentration and titrated to  $\text{pH}$  7.4 using 1 M NaOH. Forskolin ( $5 \mu\text{M}$ ) was then added to the cells for 10 min before the assay was ended by removal of media and lysis of cells by adding 5% (w/v) trichloroacetic acid containing 1 mM ATP and 1 mM cAMP for 1 h at  $4^\circ\text{C}$ . cAMP levels in lysates were measured by the twin column chromatography procedure described by Johnson *et al.* (1994).

### Cell surface biotinylation

Calu-3 cells were grown on Transwell inserts and washed three times with PBS. Cells were then incubated at  $37^\circ\text{C}$  in humidified air containing 5% (v/v)  $\text{CO}_2$  (control) or 10% (v/v)  $\text{CO}_2$  (hypercapnia) in pre-gassed high  $\text{Cl}^-$  Krebs solution for 20 min. The solution was removed and cells were incubated for 30 min at  $4^\circ\text{C}$  in PBS++ (PBS containing 0.1 mM  $\text{Ca}^{2+}$  and 1 mM  $\text{Mg}^{2+}$ ;  $\text{pH}$  8.0) with  $0.5 \text{ mg ml}^{-1}$  EZ-Link Sulfo-NHS-Biotin (Thermo Scientific, Waltham, MA, USA) added to the apical membrane. Biotinylation was stopped by removal of the apical solution and addition of ice cold PBS++.

Cells were then lysed using RIPA buffer containing 150 mM NaCl, 20 mM Tris, 1% Triton-X-100, 0.1% SDS and 0.08% sodium deoxycholate ( $\text{pH}$  8.0) with one protease inhibitor cocktail tablet (Roche Applied Sciences, Penzberg, Germany) added to 50 ml RIPA buffer. The lysate was collected and centrifuged for 15 min at  $16,200 \times g$  at  $4^\circ\text{C}$  and the protein concentration of the supernatant was assessed using the BCA protein assay kit (Pierce Biotechnology, Rockford, IL, USA). One hundred micrograms of protein was taken to be used for analysis of whole cell protein expression. Streptavidin agarose beads (Novagen, Billerica, MA, USA) that had been equilibrated with PBS++ and RIPA buffer were added to the remaining protein at  $1 \mu\text{l beads}/20 \mu\text{g protein}$  and incubated overnight at  $4^\circ\text{C}$  with continuous inversion of samples to ensure thorough mixing. These samples were then centrifuged and washed five times with RIPA buffer and heated to  $65^\circ\text{C}$  for 5 min. Protein expression was then detected by Western blot.

### Western blot

SDS-PAGE using 7% gels was performed on all samples at 120 V for 2 h. Samples were then transferred to a nitrocellulose membrane at 400 mA for 90 min at  $4^\circ\text{C}$ . The membrane was blocked for 1 h in blocking buffer consisting of Tris-buffered saline (TBS) + 0.1% Tween 20 (TTBS) containing 5% dried skimmed milk powder (Compliments) before primary mouse anti-CFTR monoclonal antibody 23C5 (1:200 dilution in TBS) and mouse anti- $\alpha$  tubulin antibody (1:1000 dilution in TBS) were added overnight at  $4^\circ\text{C}$ . The membrane was then washed using TTBS before a goat anti-mouse antibody labelled with HRP was added at 1:5000 dilution in TBS for 1 h. Any unbound secondary antibody was then washed off with TTBS. To detect any HRP activity, equal volumes of the enhanced chemiluminescent substrates Enhanced Luminol Reagent and the Oxidizing Reagent (Thermo Scientific) were added to the blot for 10 min before the blot was exposed to Kodak Scientific Imaging film for 30 s. The film was developed and the band intensity was analysed using ImageJ software.

### Fluid secretion assays

Calu-3 cells were grown on Transwell inserts and washed three times with PBS to remove any mucus that may have accumulated over time. Extra care was taken when removing the PBS to ensure no residual fluid remained in the Transwell at the end of the washes. Solutions were then added to the cells (1 ml basolaterally,  $200 \mu\text{l}$  apically) and cells were incubated at  $37^\circ\text{C}$  in humidified air containing 5% (v/v)  $\text{CO}_2$  (control) or 10% (v/v)  $\text{CO}_2$  (hypercapnia) for 24 h (Garnett *et al.* 2011). The apical fluid was then

removed and its volume was measured. First, 180  $\mu\text{l}$  was removed and then the rest of the fluid was removed 1  $\mu\text{l}$  at a time to ensure high accuracy. Samples were collected in an Eppendorf tube and after a full equilibration in either 5 or 10%  $\text{CO}_2$ , pH was assessed using a MiniTrode lab pH electrode (Hamilton, Reno, NV, USA). This enabled the  $\text{HCO}_3^-$  concentration of the secreted fluid to be calculated using the Henderson–Hasselbalch equation, where;  $\text{pH} = \text{pK}_a + \log_{10} ([\text{HCO}_3^-]/(0.03 \times P_{\text{CO}_2}))$  where  $\text{pK}_a = 6.1$  (the negative log of the carbonic acid dissociation constant).

### Periodic acid-Schiffs (PAS) assay

Given that it has been reported that Calu-3 cells secrete mucins, notably MUC5AC (Kreda *et al.* 2007, 2010), the PAS assay was used to detect the glycoprotein content of the secreted fluid as an indicator of secreted mucin. To generate a standard curve, pig mucin (a gift from Prof. Jeff Pearson, Newcastle University) was diluted to 100, 50, 20, 10, 5, 2 and 1  $\mu\text{g ml}^{-1}$  and 100  $\mu\text{l}$  of standards was added to a 96-well plate in duplicate. Then, 100  $\mu\text{l}$  of sample was made to 1 ml by addition of deionised water and 100  $\mu\text{l}$  was added to wells in duplicate. One hundred microlitres of a periodic acid/acetic acid mix (made from 10  $\mu\text{l}$  periodic acid added to 7% acetic acid) was added to all standards and samples and the plate were incubated for 60 min at 37°C. In total, 100  $\mu\text{l}$  of 1.6% sodium metabisulphate solution in Schiff's reagent was added to all standards and samples. The plate was then incubated at room temperature for 30 min before absorbance was read at 550 nm using an ELx808 Absorbance Microplate Reader (BioTek, Winooski, VT, USA). Absorbance was then converted to mucin concentration using the standard curve.

### Solutions and reagents

All reagents were purchased from Sigma Aldrich (Poole, UK) apart from forskolin and ouabain (R & D Systems, Abingdon, UK), BCECF-AM (Invitrogen, Paisley, UK) and GlyH-101 and CFTR<sub>inh</sub> 172 (Calbiochem, Watford, UK). All gas cylinders were purchased from BOC (Guildford, UK) and consisted of the following mixtures: 5%  $\text{CO}_2/95\% \text{O}_2$  and 10%  $\text{CO}_2/90\% \text{O}_2$ . NaHEPES solution consisted of (in mM) 130 NaCl, 5 KCl, 1  $\text{CaCl}_2$ , 1  $\text{MgCl}_2$ , 10 NaHEPES and 10 D-glucose, pH 7.4 at 37°C. High  $\text{Cl}^-$  Krebs solution consisted of (in mM) 25  $\text{NaHCO}_3$ , 115 NaCl, 5 KCl, 1  $\text{CaCl}_2$ , 1  $\text{MgCl}_2$  and 10 D-glucose (pH 7.4). For high  $\text{Cl}^-$ ,  $\text{Na}^+$ -free solutions,  $\text{NaHCO}_3$  was replaced with choline bicarbonate and NaCl was replaced with N-methyl-D-glucamine (NMDG)-Cl. Zero  $\text{Cl}^-$  Krebs solution consisted of (in mM) 25  $\text{NaHCO}_3$ , 115 Na-gluconate, 2.5  $\text{K}_2\text{SO}_4$ , 1 Ca-gluconate, 1 Mg-gluconate

and 10 D-glucose. pH<sub>i</sub> calibration solutions consisted of (in mM) 5 NaCl, 130 KCl, 1  $\text{CaCl}_2$ , 1  $\text{MgCl}_2$ , 10 D-glucose, 10 HEPES (for solutions set at pH 7.6 or below) or 10 Tris (for solutions set at pH 7.8 or above) as well as 10  $\mu\text{M}$  nigericin. Solutions were set to the desired pH by using 1 M HCl or 1 M NaOH. Solutions used to determine intracellular buffering capacity consisted of (in mM) 4.5 KCl, 1  $\text{MgCl}_2$ , 2  $\text{CaCl}_2$ , 5 BaCl, 10 Hepes, 10 D-glucose as well as varying concentrations of  $\text{NH}_4\text{Cl}/\text{NMDG-Cl}$ , ranging from 0  $\text{NH}_4\text{Cl}/145 \text{NMDG-Cl}$  to 30  $\text{NH}_4\text{Cl}/115 \text{NMDG-Cl}$ . All solutions were titrated to pH 7.4 at 37°C using 1 M CsOH.

### Statistical analysis

Statistical analysis was performed using GraphPad Prism 4 software. Results are expressed as mean  $\pm$  SEM of  $n$  observations. Student's  $t$  test, one-way ANOVA (with Tukey's multiple comparison post-test) or two-way ANOVA (with Bonferroni post-test) were carried out where applicable to determine statistical significance between measurements. A  $P$  value of  $< 0.05$  was considered statistically significant.

## Results

### Acute hypercapnia attenuates forskolin-stimulated cAMP levels in Calu-3 cells independent of changes in pH<sub>i</sub>

We first assessed the effect of hypercapnia on the pH<sub>i</sub> of Calu-3 cells as it is well known that raising  $\text{CO}_2$  generally induces cytosolic acidification. Cells were first perfused with Krebs solution gassed with 5% (v/v)  $\text{CO}_2$  to maintain cells in a normocapnic environment. Perfusing cells with 10% (v/v)  $\text{CO}_2$  caused pH<sub>i</sub> to decrease by  $0.18 \pm 0.01$  pH units ( $n = 60$ ). This intracellular acidosis recovered after  $\sim 20$  min even upon continuous exposure of cells to 10% (v/v)  $\text{CO}_2$  (Fig. 1A). We therefore chose 20 min as an appropriate time to study the effects of acute hypercapnia as cells would have recovered their pH<sub>i</sub>. Exposure of cells to 10% (v/v)  $\text{CO}_2$  for 20 min did not alter the integrity of the epithelial monolayer as assessed by recording TEER. In normocapnia, TEER was  $671 \pm 42 \Omega \text{ cm}^{-2}$  ( $n = 3$ ) and  $600 \pm 42 \Omega \text{ cm}^{-2}$  in monolayers of Calu-3 cells exposed to acute hypercapnia ( $P > 0.05$  vs. normocapnia;  $n = 3$ ). For all experiments,  $[\text{HCO}_3^-]$  in the Krebs solution was maintained at 25 mM in both normocapnia and hypercapnia. This was necessary to ensure that any effects of hypercapnia on cAMP signalling were due to  $\text{CO}_2$ -dependent effects on tmAC as opposed to effects of  $\text{HCO}_3^-$  on sAC – an enzyme shown to be sensitive to  $\text{HCO}_3^-$  (Chen *et al.* 2000). In addition, given the scope of our work was to investigate the effect of raised  $\text{CO}_2$  on

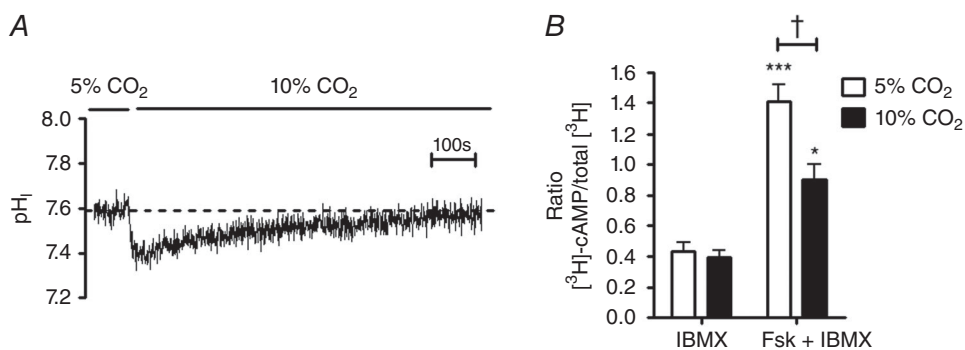
bicarbonate secretion, changing  $[\text{HCO}_3^-]$  in hypercapnia would be predicted to compromise these studies.

As we have previously shown that cAMP signalling is sensitive to changes in  $\text{CO}_2$  (Townsend *et al.* 2009; Cook *et al.* 2012),  $[\text{cAMP}]_i$  was measured in conditions of normocapnia and after 20 min exposure to hypercapnia, with the incubation media buffered to pH 7.4 in each condition to control for differences in extracellular pH ( $\text{pH}_e$ ). In the presence of the non-specific phosphodiesterase (PDE) inhibitor IBMX, there was no effect of hypercapnia on  $[\text{cAMP}]_i$  (Fig. 1B). Stimulation of cells with the cAMP elevating agonist forskolin (added after 20 min of exposure to 5 or 10%  $\text{CO}_2$  to allow for  $\text{pH}_i$  recovery) produced a  $3.3 \pm 0.5$ -fold increase in  $[\text{cAMP}]_i$  in normocapnia ( $P < 0.001$ ;  $n = 6$ ; Fig. 1B) but this was significantly reduced to a  $2.3 \pm 0.4$ -fold increase in  $[\text{cAMP}]_i$  in cells exposed to acute hypercapnia ( $P < 0.05$  vs. normocapnia;  $n = 6$ ; Fig. 1B). When the cAMP levels produced in IBMX-stimulated cells were subtracted from the cAMP levels measured in the presence of forskolin + IBMX, acute hypercapnia induced a  $48 \pm 4\%$  reduction in  $[\text{cAMP}]_i$ . These results demonstrate that cAMP signalling in Calu-3 cells is responsive to elevated  $\text{CO}_2$ , through a mechanism that is independent of changes in  $\text{pH}_e$  and not due to the  $\text{CO}_2$ -induced intracellular acidosis.

### Forskolin-stimulated transepithelial anion secretion is reduced in conditions of acute hypercapnia in Calu-3 cells

To assess whether the  $\text{CO}_2$ -induced reductions in forskolin-stimulated  $[\text{cAMP}]_i$  modulated cAMP-regulated transepithelial ion transport,  $I_{\text{sc}}$  measurements were made in monolayers of Calu-3 cells.  $I_{\text{sc}}$  is the current

required to clamp the transepithelial voltage difference ( $V_{\text{te}}$ ) to 0 mV. In Calu-3 monolayers, the magnitude of  $V_{\text{te}}$  is mainly accounted for by transepithelial anion secretion (Lee *et al.* 1998; Devor *et al.* 1999; Cobb *et al.* 2003; Cuthbert *et al.* 2003; Shan *et al.* 2012) and therefore changes in  $I_{\text{sc}}$  reflect changes in anion secretion. Figure 2A shows a representative recording of  $I_{\text{sc}}$  in normocapnic conditions. To maximise electrogenic  $\text{Cl}^-$  secretion, a basolateral to apical  $\text{Cl}^-$  gradient was applied across the monolayer by reducing apical  $[\text{Cl}^-]$  to 40 mM by substitution of 84 mM NaCl with equimolar Na-gluconate. In normocapnia, prior to reducing the apical  $\text{Cl}^-$  concentration, Calu-3 cells displayed a basal  $I_{\text{sc}}$  of  $5.2 \pm 0.4 \mu\text{A}$  and further investigations showed that this basal  $I_{\text{sc}}$  was insensitive to both the basolateral  $\text{Na}^+/\text{K}^+/\text{2Cl}^-$  (NKCC1) inhibitor bumetanide ( $25 \mu\text{M}$ ) and the NHE inhibitor Ethyl-isopropyl amiloride (EIPA) ( $3 \mu\text{M}$ ) (Masereel *et al.* 2003), whereas application of the CFTR blocker CFTR<sub>inh</sub>-172 ( $20 \mu\text{M}$ ) reduced basal  $I_{\text{sc}}$  by  $48.5 \pm 4.2\%$  ( $P < 0.01$ ;  $n = 3$ ), indicating that the majority of basal  $I_{\text{sc}}$  was mediated by CFTR. Interestingly, in cells exposed to 20 min hypercapnia (Fig. 2B), basal  $I_{\text{sc}}$  was reduced to  $1.3 \pm 1.3 \mu\text{A}$  ( $P < 0.01$  vs. normocapnia;  $n = 8$ ; Fig. 2C), implying that acute hypercapnia inhibited CFTR-dependent anion secretion under resting conditions. After establishing a basolateral to apical  $\text{Cl}^-$  gradient, addition of forskolin stimulated an increase in  $I_{\text{sc}}$  which peaked after approximately 90 s to a maximal level and then decreased slightly until a new steady state was reached. The forskolin-stimulated increase in  $I_{\text{sc}}$  was blocked by a combination of apical CFTR<sub>inh</sub>-172 ( $20 \mu\text{M}$ ) and basolateral bumetanide ( $25 \mu\text{M}$ ), and both the magnitude and the rate of  $I_{\text{sc}}$  increase were significantly reduced by  $61.8 \pm 16.0$  and



**Figure 1. Acute hypercapnia attenuates forskolin-stimulated cAMP levels in Calu-3 cells independent of changes in intracellular pH**

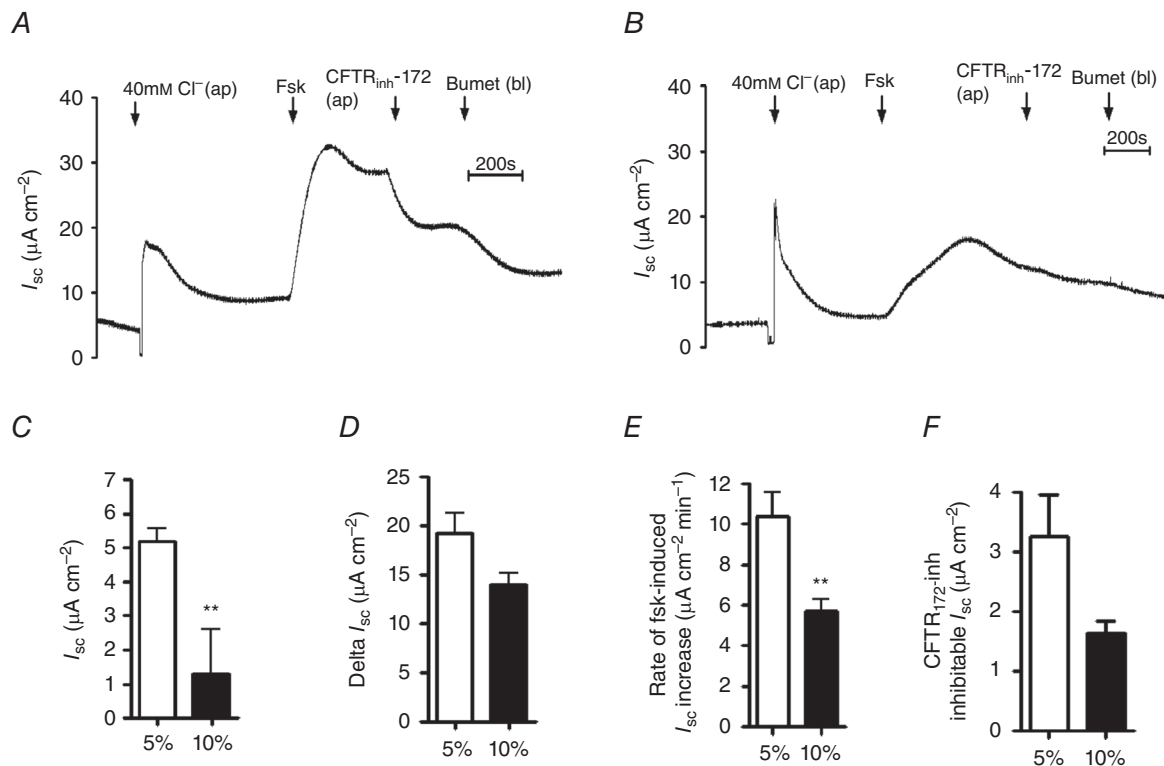
A, the effect of hypercapnia (10%  $\text{CO}_2$ ) on the  $\text{pH}_i$  of Calu-3 cells; cells recovered  $\text{pH}_i$  from  $\text{CO}_2$ -induced acidosis after ~20 min. B, the effect of acute hypercapnia on intracellular cAMP in which cells were incubated for 20 min in either 5%  $\text{CO}_2$  (v/v) in air or 10%  $\text{CO}_2$  (v/v) in air before being stimulated with either IBMX (1 mM) or forskolin (5  $\mu\text{M}$ ) + IBMX (1 mM) for a further 10 min. Intracellular cAMP levels were determined by measuring the amount of  $[\text{3H}]\text{-cAMP}$  in each sample. \*\*\*Significant effect of forskolin ( $P < 0.001$ ); \* $P < 0.05$ ); †significant effect of hypercapnia ( $P < 0.05$ ). Data represent mean  $\pm$  SEM;  $n = 6$  for each.

73.4 ± 6.8%, respectively, by the PKA inhibitor H-89 ( $P < 0.05$  vs. control;  $n = 3$ ). These results demonstrated that CFTR-dependent anion secretion mediated the forskolin-stimulated increase in  $I_{sc}$ , consistent with previous studies (Welsh & Smith, 2001; Kreda *et al.* 2007; Shan *et al.* 2012). The maximal forskolin-stimulated increase in  $I_{sc}$  ( $\Delta I_{sc}$ ) was  $19.3 \pm 2.0 \mu A cm^{-2}$  ( $n = 10$ ) in normocapnia compared to  $14.1 \pm 1.1 \mu A cm^{-2}$  in acute hypercapnia ( $P = 0.053$  vs. normocapnia;  $n = 8$ ; Fig. 2D). The rate of forskolin-stimulated increase in  $I_{sc}$  in normocapnia was  $10.4 \pm 1.3 \mu A cm^{-2} min^{-1}$  ( $n = 10$ ), which was reduced to  $5.7 \pm 0.6 \mu A cm^{-2} min^{-1}$  ( $P < 0.01$  vs. normocapnia;  $n = 8$ ; Fig. 2E) in cells exposed to acute hypercapnia. These results, combined with those in Fig. 1, imply that attenuation of forskolin-stimulated cAMP levels by acute hypercapnia was sufficient to significantly reduce the rate of cAMP-regulated anion secretion in Calu-3 cells. In addition, the forskolin-stimulated  $I_{sc}$  that was sensitive to CFTR<sub>inh</sub>-172 was also measured. In normocapnia, this was  $3.3 \pm 0.7 \mu A cm^{-2}$  ( $n = 10$ ) and although it

was lower in hypercapnia ( $1.6 \pm 0.2 \mu A cm^{-2}$ ;  $n = 8$ ), this was not statistically significant, although a clear trend existed ( $P = 0.058$  vs. normocapnia; Fig. 2F). Taken together with the data displayed in Fig. 2C and E, these findings suggest CFTR activity is lower in hypercapnia in both basal and forskolin-stimulated conditions.

### Acute hypercapnia reduces adenosine but not IBMX-stimulated transepithelial anion secretion in Calu-3 cells

Having shown that hypercapnia reduced forskolin-stimulated  $I_{sc}$  in Calu-3 cells, it was important to investigate whether hypercapnia also elicited similar effects when a more physiological agonist was used to increase  $[cAMP]_i$  in Calu-3 cells. For this, cells were stimulated with adenosine (Cobb *et al.* 2003) and the resulting  $I_{sc}$  was measured. In normocapnia, adenosine stimulated a maximal  $I_{sc}$  increase of  $23.9 \pm 3.5 \mu A cm^{-2}$  ( $n = 5$ ), which was significantly reduced to  $6.4 \pm 1.4 \mu A cm^{-2}$  in cells

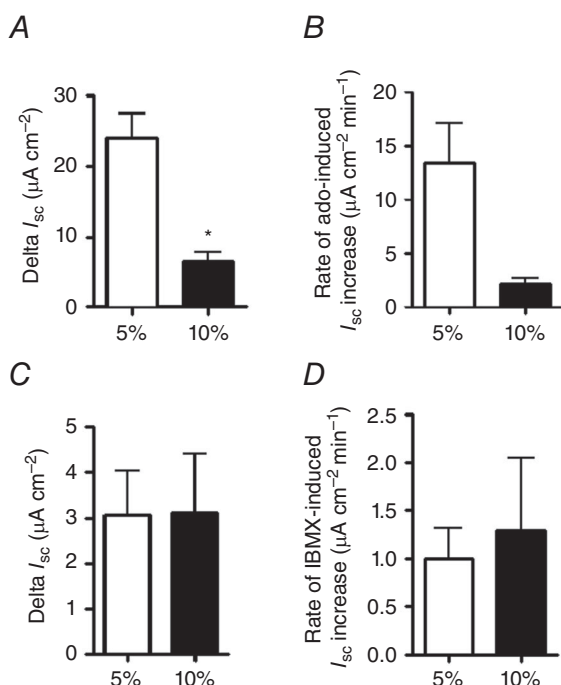


**Figure 2. Forskolin-stimulated transepithelial anion secretion is reduced in conditions of acute hypercapnia in Calu-3 cells**

Calu-3 cells were grown on permeable Snapwell supports and  $I_{sc}$  was measured using an Ussing chamber. A, a representative  $I_{sc}$  recording of a control experiment in which cells were exposed to 5% (v/v)  $CO_2$ /95% (v/v)  $O_2$ ; B, a representative recording in which cells were pre-exposed to 10% (v/v)  $CO_2$ /90% (v/v)  $O_2$  for 20 min prior to being studied. Apical  $[Cl^-]$  was reduced to 40 mM and cells were stimulated with forskolin (Fsk; 5  $\mu M$ ) before addition of apical CFTR<sub>inh</sub>-172 (20  $\mu M$ ) and basolateral bumetanide (Bumet; 25  $\mu M$ ) as indicated. C–F, basal  $I_{sc}$  (C), maximal forskolin-stimulated increase in  $I_{sc}$  (D), rate of increase in forskolin-stimulated  $I_{sc}$  (E) and amount of forskolin-stimulated current that was inhibited by CFTR<sub>inh</sub>-172 (F). \*\*Significant effect of hypercapnia ( $P < 0.01$ ). Data represent mean  $\pm$  SEM;  $n = 10$  for normocapnia and  $n = 8$  for hypercapnia.



exposed to acute hypercapnia ( $P < 0.05$  vs. normocapnia;  $n = 3$ ; Fig. 3A). The rate of the adenosine-stimulated increase in  $I_{sc}$  was  $13.4 \pm 8.4 \mu\text{A cm}^{-2} \text{ min}^{-1}$  ( $n = 5$ ) in normocapnia which was reduced to  $2.3 \pm 0.8 \mu\text{A cm}^{-2} \text{ min}^{-1}$  in acute hypercapnia ( $P = 0.06$  vs. normocapnia;  $n = 3$ ; Fig. 3B). Therefore, these data demonstrated that hypercapnia reduced adenosine-stimulated, CFTR-dependent anion secretion in Calu-3 cells, which mimicked what was observed with forskolin. Interestingly, when  $[\text{cAMP}]_i$  levels were increased by stimulation of cells with IBMX, there was no effect of acute hypercapnia on either the IBMX-stimulated  $\Delta I_{sc}$  (normocapnia =  $3.1 \pm 0.9 \mu\text{A cm}^{-2}$ ; hypercapnia =  $3.1 \pm 1.3 \mu\text{A cm}^{-2}$ ;  $P > 0.05$  vs. normocapnia;  $n = 3-4$ ; Fig. 3C) or the rate of IBMX-stimulated increase in  $I_{sc}$  (normocapnia =  $1.0 \pm 0.31 \mu\text{A cm}^{-2} \text{ min}^{-1}$ ; hypercapnia =  $1.2 \pm 0.8 \mu\text{A cm}^{-2} \text{ min}^{-1}$ ;  $P > 0.05$  vs. normocapnia;  $n = 3-4$ ; Fig. 3D). Therefore,



**Figure 3. Acute hypercapnia reduces adenosine but not IBMX-stimulated transepithelial anion secretion in Calu-3 cells**

Calu-3 cells were grown on permeable Snapwell supports and  $I_{sc}$  was measured using an Ussing chamber. For control experiments, cells were gassed with 5% (v/v)  $\text{CO}_2/95\%$  (v/v)  $\text{O}_2$  whilst hypercapnia was induced by pre-exposing cells to 10% (v/v)  $\text{CO}_2/90\%$  (v/v)  $\text{O}_2$  for 20 min prior to being studied. Apical  $[\text{Cl}^-]$  was reduced to 40 mM and cells were stimulated with either adenosine (10  $\mu\text{M}$ ) or IBMX (1 mM) before addition of apical  $\text{CFTR}_{\text{inh}}-172$  (20  $\mu\text{M}$ ) and basolateral bumetanide (25  $\mu\text{M}$ ). A, the maximal adenosine-stimulated increase in  $I_{sc}$ ; B, the rate of increase in adenosine-stimulated  $I_{sc}$ . \*Significant effect of hypercapnia ( $P < 0.05$ ). Data represent mean  $\pm$  SEM;  $n = 5$  for normocapnia and  $n = 3$  for hypercapnia. C, the maximal IBMX-stimulated increase in  $I_{sc}$ ; D, the rate of increase in IBMX-stimulated  $I_{sc}$ . Data represent mean  $\pm$  SEM;  $n = 3$  for normocapnia and  $n = 4$  for hypercapnia.

these data support the observations in Fig. 1B, which demonstrated that IBMX-stimulated increases in  $[\text{cAMP}]_i$  was insensitive to  $\text{CO}_2$ , and suggest hypercapnia-induced changes in  $[\text{cAMP}]_i$  were not due to modulation of IBMX-sensitive PDE activity.

### The effect of hypercapnia on cAMP-dependent transepithelial anion secretion is independent of $\text{CO}_2$ -induced intracellular acidosis

Although  $I_{sc}$  measurements performed in hypercapnia were made after 20 min of exposure to 10%  $\text{CO}_2$ , during which time  $\text{pH}_i$  had recovered from intracellular acidosis (see Fig. 1A), it was possible the intracellular acidosis may have induced long-term modifications to transporters involved in cAMP-regulated anion secretion. Therefore, cells were acid loaded using 40 mM sodium acetate, which caused an intracellular acidification of  $0.17 \pm 0.02$  ( $n = 6$ ) that recovered within 20 min (Fig. 4A and B) and was thus highly similar to the effect of 10%  $\text{CO}_2$ . Thus, the effect of forskolin on  $I_{sc}$  was measured in cells exposed to 40 mM sodium acetate or 80 mM mannitol (to compensate for the increased osmolarity of the sodium acetate-containing solutions). Representative experiments are shown in Fig. 4C and D. There was no effect of 40 mM sodium acetate on either the magnitude or the rate of forskolin-stimulated increases in  $I_{sc}$  (Fig. 4E and F), therefore demonstrating that the  $\text{CO}_2$ -induced intracellular acidosis does not contribute to the effects of hypercapnia on cAMP-stimulated anion transport in Calu-3 cells.

### Surface expression of CFTR is unaffected by hypercapnia

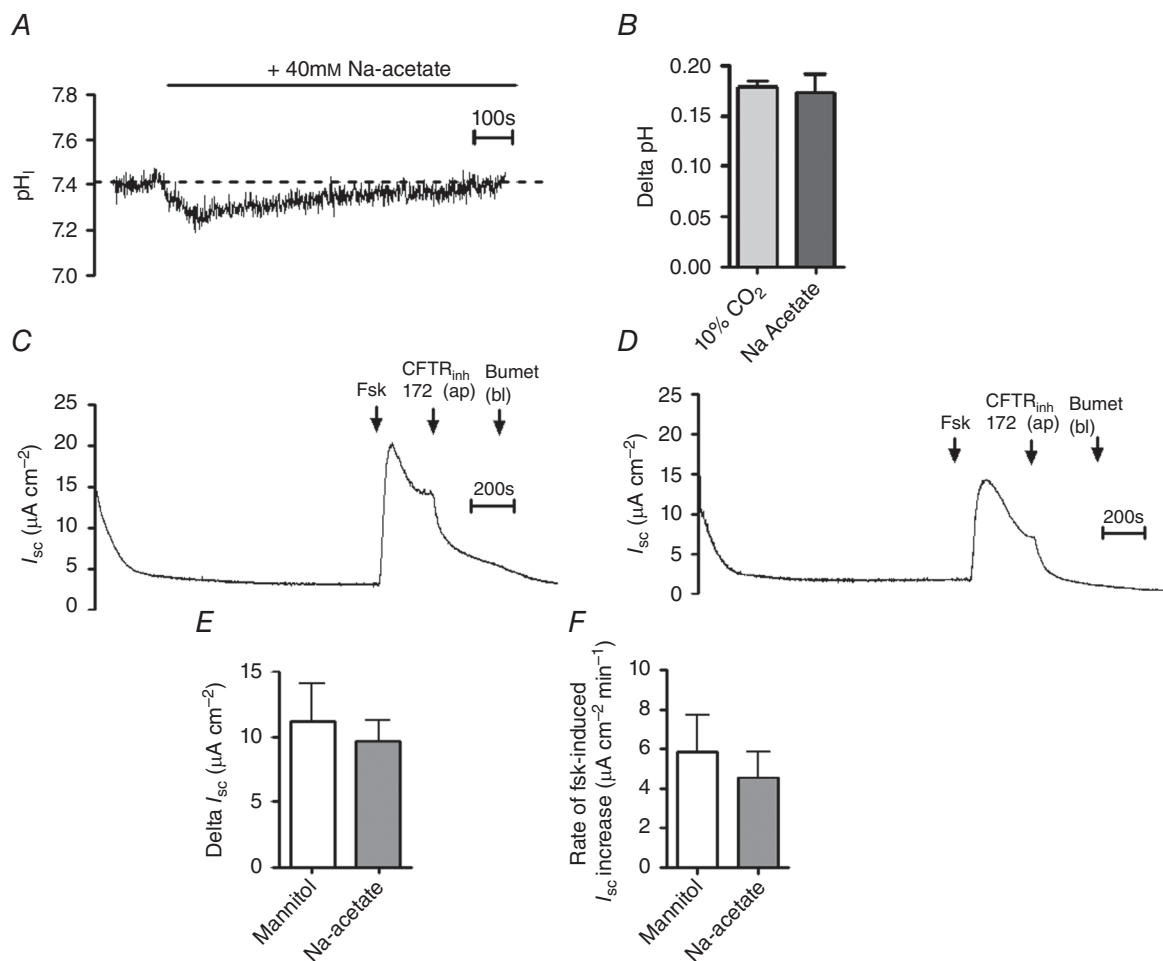
Our results from the  $I_{sc}$  measurements indicated that  $\text{CO}_2$ -induced reductions in  $[\text{cAMP}]_i$  were sufficient to reduce cAMP-stimulated, CFTR-dependent anion secretion in Calu-3 cells. To investigate if this observation was due to the effect of  $\text{CO}_2$  on cAMP and not on cell surface levels of CFTR, the amount of CFTR present at the apical membrane was assessed by cell surface biotinylation. Figure 5 shows that after normalising CFTR levels to  $\alpha$ -tubulin, there was no significant effect of  $\text{CO}_2$  on either total cell CFTR expression ( $P > 0.05$ ;  $n = 5$ , Fig. 5A) or cell surface CFTR expression ( $P > 0.05$ ;  $n = 4$ , Fig. 5B), which therefore suggest that mechanisms which control CFTR expression at the plasma membrane are insensitive to hypercapnia.

### CFTR-regulated, pendrin-dependent apical $\text{HCO}_3^-$ secretion is unaffected by hypercapnia

Having identified that hypercapnia reduces cAMP-stimulated anion secretion in Calu-3 cells, it was interesting

to assess whether  $\text{CO}_2$  was modulating  $\text{Cl}^-$  or  $\text{HCO}_3^-$  secretion or indeed both.  $\text{pH}_i$  measurements were performed to indirectly measure  $\text{HCO}_3^-$  transport across the cells. At the apical membrane, we have previously shown that Calu-3 cells express the  $\text{Cl}^-/\text{HCO}_3^-$  anion exchanger pendrin, which mediates the majority of  $\text{HCO}_3^-$  efflux from the cell (Garnett *et al.* 2011). Pendrin activity was also shown to be regulated by CFTR. To measure CFTR-dependent pendrin activity, cells were stimulated with forskolin and pendrin activity was assessed by  $\text{Cl}^-$  removal and re-addition (Fig. 6A) (Garnett *et al.* 2011). In normocapnia, removal of apical  $\text{Cl}^-$  caused  $\text{pH}_i$  to increase by  $0.61 \pm 0.08$  units ( $n = 6$ ), due to reversal of pendrin-mediated  $\text{Cl}^-/\text{HCO}_3^-$

exchange, whilst in hypercapnia this increase in  $\text{pH}_i$  was  $0.64 \pm 0.10$  ( $P > 0.05$  vs. normocapnia;  $n = 6$ , Fig. 6B). Furthermore, reintroduction of apical  $\text{Cl}^-$  caused  $\text{pH}_i$  to re-acidify at a rate of  $0.49 \pm 0.08$  pH units  $\text{min}^{-1}$  in normocapnia and  $0.45 \pm 0.06$  pH units  $\text{min}^{-1}$  in hypercapnia ( $P > 0.05$ ;  $n = 6$ ; Fig. 6C) which equated to an  $\text{HCO}_3^-$  efflux of  $104 \pm 21$   $\text{mm HCO}_3^- \text{min}^{-1}$  and  $127 \pm 38$   $\text{mm HCO}_3^- \text{min}^{-1}$ , respectively ( $P > 0.05$ ;  $n = 6$ ; Fig. 6D). Note that in forskolin-stimulated conditions, the basolateral anion exchanger, AE2, was almost completely inhibited, both in normocapnia ( $96.9 \pm 1.9\%$  inhibition;  $n = 4$ ) and in hypercapnia ( $93.8 \pm 4.3\%$  inhibition;  $n = 4$ ), consistent with previous findings (Garnett *et al.* 2011). Thus, AE2-dependent  $\text{HCO}_3^-$  transport can be



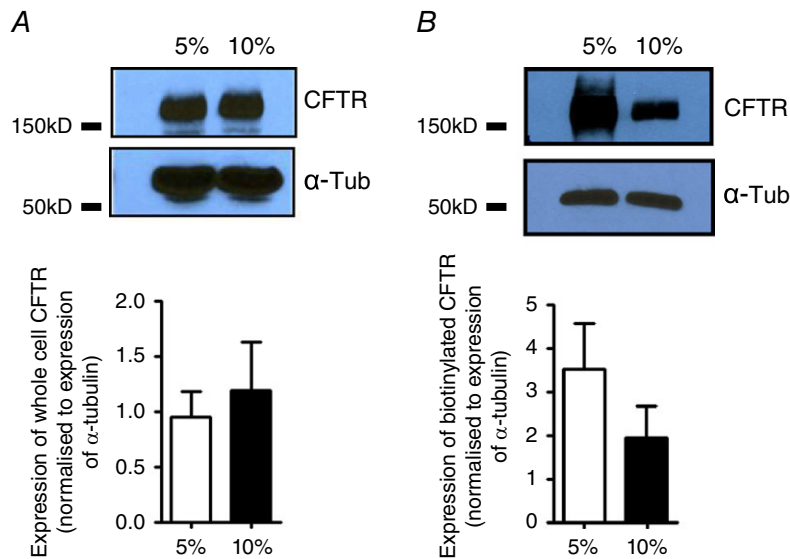
**Figure 4. The effect of hypercapnia on cAMP-dependent transepithelial anion secretion is independent of  $\text{CO}_2$ -induced intracellular acidosis**

A, a representative experiment in which Calu-3 cells were gassed with 5% (v/v)  $\text{CO}_2/95\%$  (v/v)  $\text{O}_2$  and exposed to 40 mM sodium acetate and  $\text{pH}_i$  was measured using fluorescence microscopy. B, summary of the magnitude of the intracellular acidosis resulting from either 10%  $\text{CO}_2$  or sodium acetate. Data represent mean  $\pm$  SEM;  $n = 60$  for 10%  $\text{CO}_2$  and  $n = 6$  for sodium acetate. C and D, representative  $I_{sc}$  measurements in which cells were exposed to 80 mM mannitol or 40 mM sodium acetate, respectively, for 20 min prior to addition of forskolin (Fsk; 5  $\mu\text{M}$ ), apical CFTR<sub>inh</sub>-172 (20  $\mu\text{M}$ ) and basolateral bumetanide (Bumet; 25  $\mu\text{M}$ ) as indicated. E and F, summary of the effect of sodium acetate on the magnitude and the rate, respectively, of the forskolin-stimulated increase in  $I_{sc}$ . Data represent mean  $\pm$  SEM,  $n = 5$  for each.

eliminated from having any effect on these measurements. Therefore, these data show that apical CFTR-dependent anion exchange activity was unaffected by acute hypercapnia and suggested that  $\text{HCO}_3^-$  transport across the apical membrane was insensitive to changes in  $\text{CO}_2$ .

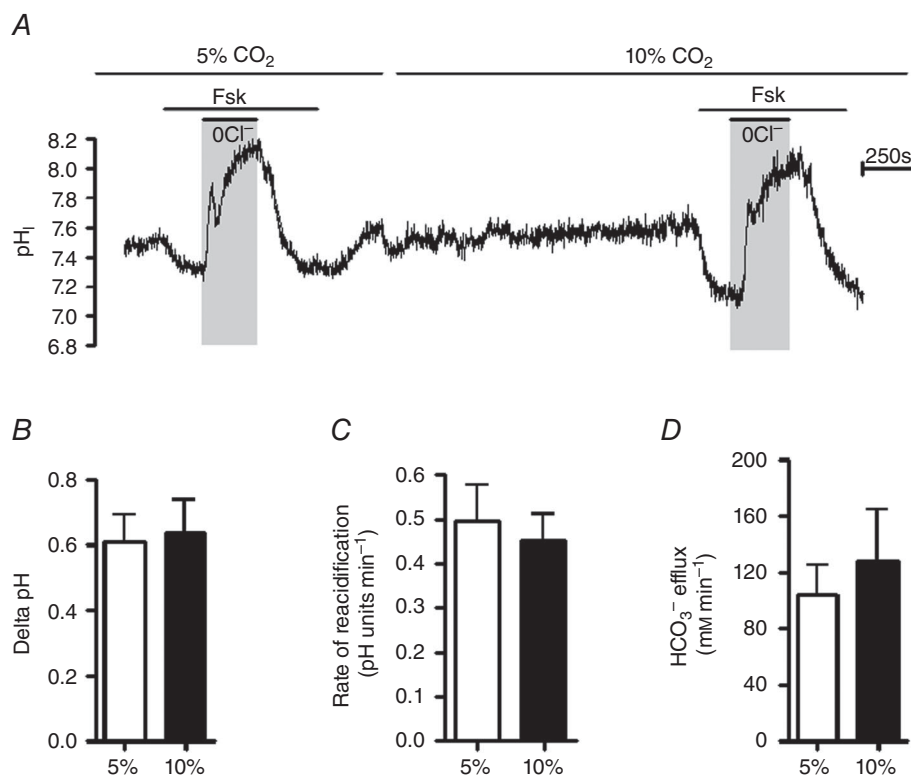
### Acute hypercapnia does not alter cAMP-stimulated NBC activity in Calu-3 cells

To investigate  $\text{HCO}_3^-$  transport across the basolateral membrane, we measured the activity of NBC transporters,



#### Figure 5. Cell surface expression of CFTR is unaffected by acute hypercapnia

Calu-3 cells were grown on permeable transwell supports and membrane expression of CFTR was assessed using a biotinylation assay. *A*, an example blot of whole cell CFTR expression under 5%  $\text{CO}_2$  and 10%  $\text{CO}_2$  and the relative expression of whole cell CFTR when normalised to expression of whole cell  $\alpha$ -tubulin. Data represent mean  $\pm$  SEM;  $n = 5$ . *B*, an example blot of biotinylated CFTR expression, used as a marker of surface expression, under 5%  $\text{CO}_2$  and 10%  $\text{CO}_2$  and the relative expression of biotinylated CFTR when normalised to expression of biotinylated  $\alpha$ -tubulin. Data represent mean  $\pm$  SEM;  $n = 4$ .



#### Figure 6. CFTR-regulated, pendrin-dependent apical $\text{HCO}_3^-$ efflux is unaffected by hypercapnia

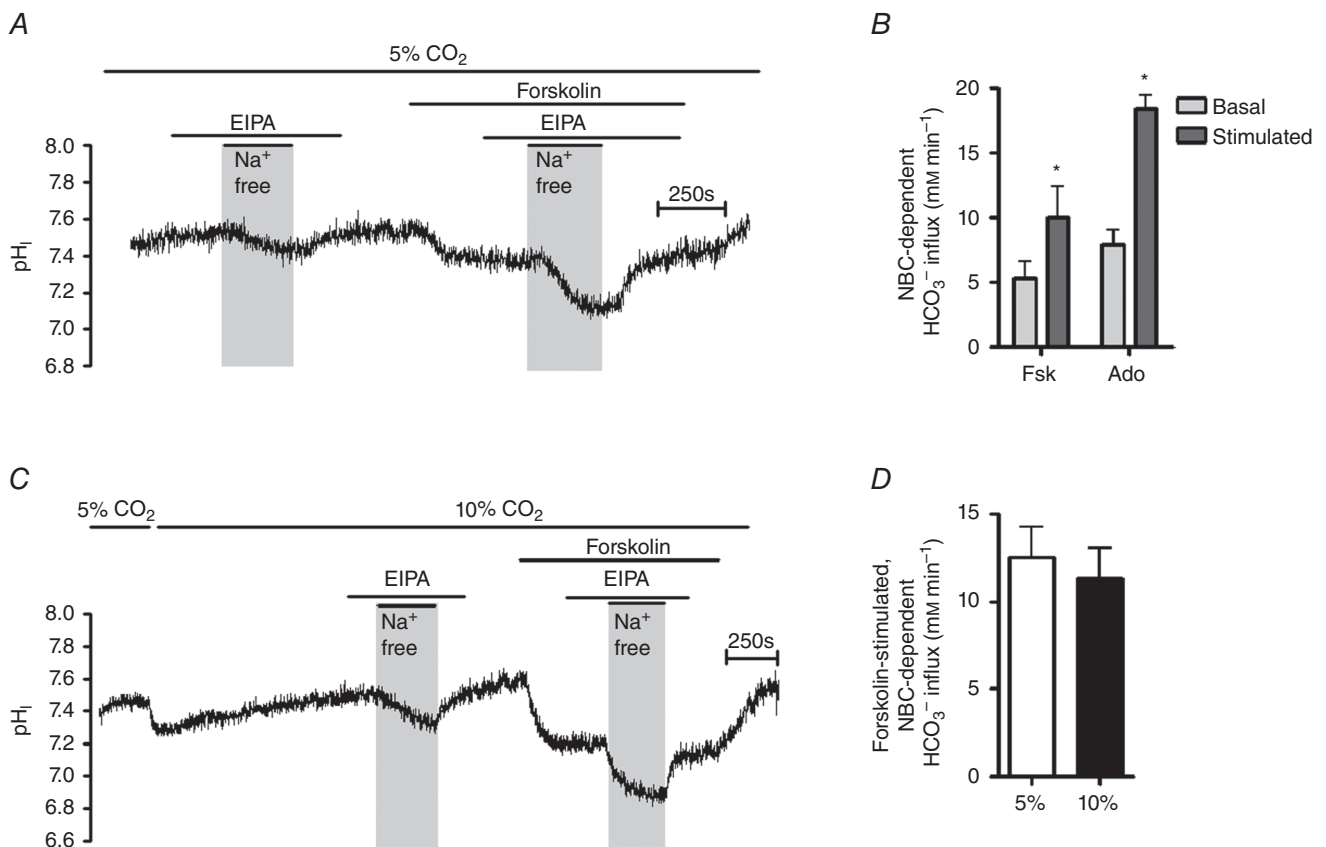
*A*, a representative  $\text{pH}_i$  experiment in which the effect of acute hypercapnia on  $5 \mu\text{M}$  forskolin-stimulated, CFTR-regulated apical  $\text{HCO}_3^-$  transport was assessed by removal and subsequent re-addition of apical  $\text{Cl}^-$ . *B*,  $\Delta\text{pH}$  in response to removal of  $\text{Cl}^-$ . *C* and *D*, rate of re-acidification (*C*) and  $\text{HCO}_3^-$  flux resulting from re-addition of apical  $\text{Cl}^-$  (*D*). Data represent mean  $\pm$  SEM;  $n = 6$  for each.

which have been shown to mediate basolateral membrane  $\text{HCO}_3^-$  import in Calu-3 cells (Lee *et al.* 1998; Devor *et al.* 1999; Shan *et al.* 2012). NBC activity was monitored by measuring changes in  $\text{pH}_i$  following the removal of basolateral  $\text{Na}^+$  (to inhibit NBC) and the re-addition of basolateral  $\text{Na}^+$  (to re-activate NBC), as described by Yang *et al.* (2009), in the presence of EIPA to inhibit NHE activity. However, it was first necessary to determine whether NBC activity in Calu-3 cells was cAMP-dependent. Figure 7A and B shows that both forskolin and adenosine stimulated a  $2.3 \pm 0.4$ -fold ( $n = 3$ ;  $P < 0.05$ ) and  $2.5 \pm 0.5$ -fold ( $n = 3$ ;  $P < 0.05$ ) increase, respectively, in NBC activity, under normocapnic conditions, indicating that NBC activity in Calu-3 cells is increased by cAMP. The effect of acute hypercapnia on cAMP-regulated NBC activity was next assessed. Here, NBC activity was measured in normocapnic conditions (Fig. 7A) or after cells had been exposed to 20 min of hypercapnia (Fig. 7C). As summarised in Fig. 7D, forskolin stimulated an NBC-dependent  $\text{HCO}_3^-$  influx of  $12.5 \pm 1.8 \text{ mM min}^{-1}$

( $n = 7$ ) under normocapnia whilst in hypercapnia, forskolin-stimulated NBC-dependent  $\text{HCO}_3^-$  influx was  $11.3 \pm 1.7 \text{ mM min}^{-1}$  ( $n = 7$ ;  $P > 0.05$  vs. normocapnia). These findings suggest that, like pendrin, acute hypercapnia does not affect cAMP-stimulated NBC activity and thus imply that  $\text{CO}_2$ -induced effects on cAMP-regulated anion transport were not due to changes in  $\text{HCO}_3^-$  secretion *per se* and suggested only  $\text{Cl}^-$  secretion was sensitive to elevated  $\text{CO}_2$ .

### Hypercapnia reduces the volume of forskolin-stimulated fluid secretion in Calu-3 cells but has no effect on pH

We have previously shown that stimulation of Calu-3 cells with forskolin for 24 h increased the secretion of a  $\text{HCO}_3^-$ -rich fluid. Furthermore, based on pharmacological and genetic knockdown experiments, we suggested that cAMP-stimulated liquid secretion was primarily regulated by CFTR, while  $\text{HCO}_3^-$  secretion

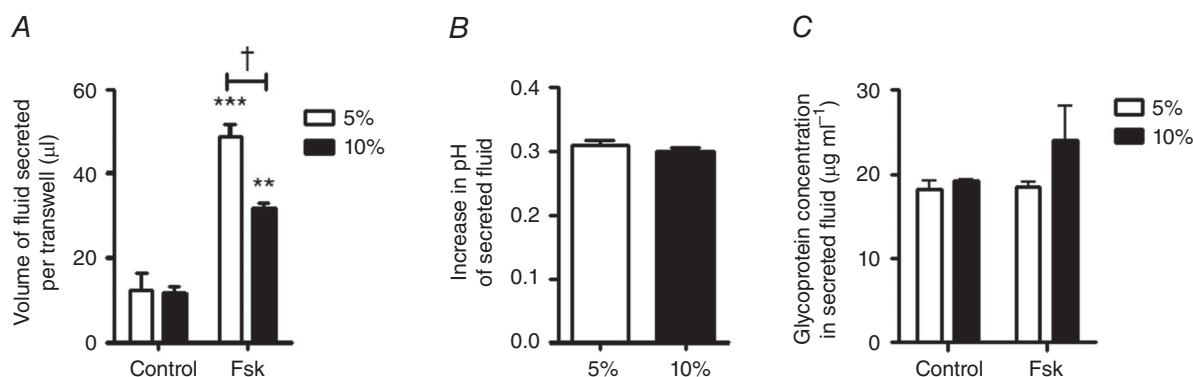


**Figure 7. Hypercapnia does not alter cAMP-stimulated NBC activity in Calu-3 cells**

A, a representative  $\text{pH}_i$  experiment in which NBC activity was assessed under basal and forskolin-stimulated conditions in 5%  $\text{CO}_2$ . EIPA ( $3 \mu\text{M}$ ) was present to inhibit the NHE. B, the effect of the cAMP agonists forskolin ( $5 \mu\text{M}$ ) and adenosine ( $10 \mu\text{M}$ ) on NBC-dependent  $\text{HCO}_3^-$  influx. \*Significant effect of agonist stimulation ( $P < 0.05$ ). Data represent mean  $\pm$  SEM;  $n = 3$  for each. C, a representative  $\text{pH}_i$  experiments in which forskolin-stimulated NBC activity was assessed in conditions of acute hypercapnia. EIPA ( $3 \mu\text{M}$ ) was present to inhibit the NHE. E, the effect of hypercapnia on forskolin-stimulated NBC activity. Data represent mean  $\pm$  SEM;  $n = 7$  for each.

was not directly *via* CFTR but through  $\text{Cl}^-/\text{HCO}_3^-$  *via* pendrin (Garnett *et al.* 2011, 2013). Given that it appears separate transporters were responsible for  $\text{Cl}^-$  and  $\text{HCO}_3^-$  secretion in Calu-3 cells, it was of interest to assess if hypercapnia impacted upon forskolin-stimulated ion and fluid secretion. Calu-3 cells were stimulated with forskolin in either 5%  $\text{CO}_2$  (v/v) in air or 10%  $\text{CO}_2$  (v/v) in air for 24 h and the amount and pH of the secreted fluid were analysed. Note that TEER was not significantly different between normocapnic controls ( $682 \pm 28 \Omega \text{ cm}^{-2}$ ;  $n = 6$ ) and cells incubated for 24 h in hypercapnia ( $681 \pm 6 \Omega \text{ cm}^{-2}$ ;  $P > 0.05$  vs. control;  $n = 6$ ), suggesting that chronic hypercapnia did not alter tight junction properties of Calu-3 cells. In normocapnic conditions, unstimulated cells secreted  $12 \pm 4 \mu\text{l}$  fluid over 24 h ( $n = 3$ ), which was significantly enhanced 3.9  $\pm$  0.2-fold to  $49 \pm 3 \mu\text{l}$  by forskolin stimulation ( $P < 0.01$  vs. unstimulated cells;  $n = 3$ ; Fig. 8A). In hypercapnic conditions, unstimulated cells secreted  $12 \pm 1 \mu\text{l}$  fluid over 24 h which was almost identical to that seen in normocapnia ( $P > 0.05$ ;  $n = 3$ ). However, although forskolin increased fluid secretion to  $32 \pm 1 \mu\text{l}$  over 24 h ( $P < 0.01$ ;  $n = 3$ ; Fig. 8A), this 2.7  $\pm$  0.1-fold increase in the volume of forskolin-stimulated fluid secretion was significantly lower than that observed in normocapnia ( $P < 0.05$  vs. normocapnia;  $n = 3$ ; Fig. 8A). This suggested chronic hypercapnia impaired cAMP-regulated CFTR-dependent  $\text{Cl}^-$  secretion in airway epithelia to reduce the osmotic driving force for fluid secretion. The pH of the secreted fluid was also measured. In normocapnia, the pH of secreted fluid increased from  $7.52 \pm 0.01$  to  $7.82 \pm 0.06$  ( $P < 0.01$ ;  $n = 3$ ) indicative of a greater  $[\text{HCO}_3^-]$  in forskolin-stimulated fluid secretion. This pH increase of  $0.31 \pm 0.01$  was not different from the pH increase

of  $0.30 \pm 0.01$  observed in hypercapnia ( $7.21 \pm 0.04$  to  $7.51 \pm 0.02$ ;  $P < 0.01$  vs. unstimulated controls;  $P > 0.05$  vs. normocapnia;  $n = 3$ ; Fig. 8B) with the lower pH values observed due to acidosis induced by elevated  $\text{CO}_2$ . Using the Henderson–Hasselbalch equation to calculate  $[\text{HCO}_3^-]$  revealed that the forskolin-stimulated fluid contained  $61.6 \pm 9.5 \text{ mM HCO}_3^-$  in normocapnia, which was not significantly different from the  $58.2 \pm 2.4 \text{ mM HCO}_3^-$  in the forskolin-stimulated fluid in hypercapnia ( $P > 0.05$ ;  $n = 3$ ). Together, these findings suggest that CFTR-dependent electrogenic  $\text{Cl}^-$  secretion is  $\text{CO}_2$ -sensitive, whilst pendrin-dependent  $\text{HCO}_3^-$  secretion is  $\text{CO}_2$ -insensitive, and supports the findings from  $I_{\text{sc}}$  and  $\text{pH}_i$  measurements (Figs 2, 6 and 7). In addition as mucin secretion has been shown to be dependent on  $[\text{HCO}_3^-]$  (Garcia *et al.* 2009; Chen *et al.* 2010; Gustafsson *et al.* 2012; Ridley *et al.* 2014), we also analysed the glycoprotein content of the secreted fluid by the PAS assay. In normocapnia, forskolin did not alter the amount of glycoproteins detected relative to unstimulated cells ( $18.5 \pm 0.5$  vs.  $18.2 \pm 1.0 \mu\text{g ml}^{-1}$ , respectively;  $P > 0.05$ ;  $n = 3$ ; Fig. 8C). Furthermore, hypercapnia had no effect on glycoprotein secretion from Calu-3 cells relative to normocapnia in either basal or forskolin-stimulated cells. Unstimulated cells secreted  $19.2 \pm 0.1 \mu\text{g ml}^{-1}$  glycoprotein ( $P > 0.05$  vs. unstimulated cells in normocapnia;  $n = 3$ ), which was unchanged in response to forskolin stimulation ( $24.0 \pm 4.0 \mu\text{g ml}^{-1}$ ;  $P > 0.05$  vs. unstimulated cells in hypercapnia;  $P > 0.05$  vs. stimulated cells in normocapnia;  $n = 3$ ; Fig. 8C). Therefore, hypercapnia modulated transporters involved in regulating the volume of secreted fluid but not those involved in mediating its composition.



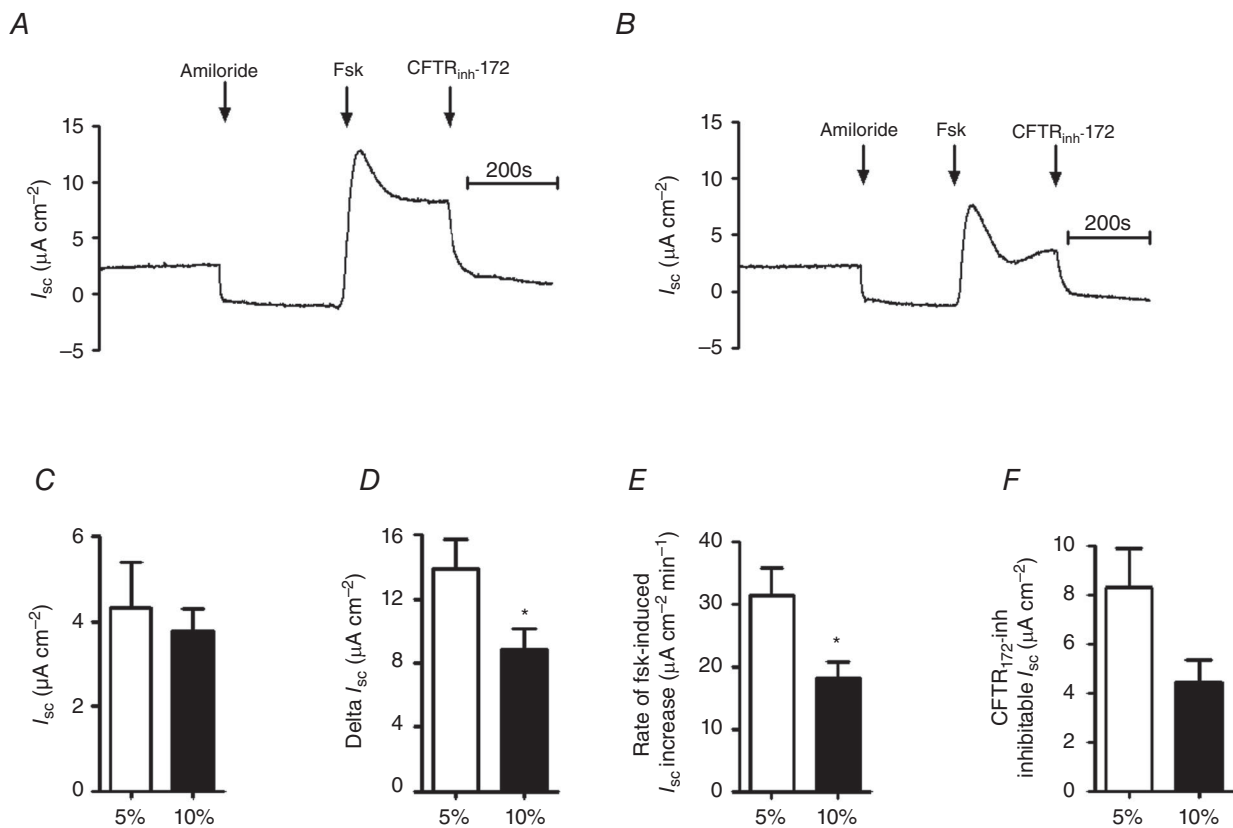
**Figure 8. Hypercapnia reduces the volume of forskolin-stimulated fluid secretion in Calu-3 cells**

Cells were stimulated with forskolin (Fsk;  $5 \mu\text{M}$ ) and incubated for 24 h in either 5%  $\text{CO}_2$  (v/v) in air or 10%  $\text{CO}_2$  (v/v) in air in high  $\text{Cl}^-$  Krebs solution at  $37^\circ\text{C}$ . *A*, the effect of chronic hypercapnia on the volume of fluid secreted over 24 h. \*\*Significant effect of forskolin stimulation compared to unstimulated control cells ( $P < 0.01$ ; \*\*\* $P < 0.001$ ); †significant effect of 10%  $\text{CO}_2$  ( $P < 0.05$ ). Data represent mean  $\pm$  SEM;  $n = 3$  for each. *B*, the increase in pH of forskolin-stimulated secreted fluid relative to unstimulated control cells. Data represent mean  $\pm$  SEM;  $n = 3$  for each. *C*, the effects of forskolin and hypercapnia on the amount of glycoprotein present in the secreted fluid, quantified by the PAS assay. Data represent mean  $\pm$  SEM;  $n = 3$  for each.

### Hypercapnia reduces forskolin-stimulated increases in $I_{sc}$ across primary human bronchial epithelial cells

To assess whether hypercapnia elicited similar effects in primary airway epithelia as it did in an airway epithelial cell line,  $I_{sc}$  measurements were made on fully differentiated primary human bronchial epithelial cells (HBECs) grown under ALI. Figure 9A and B shows representative experiments performed in conditions of normocapnia and hypercapnia, respectively. Hypercapnia had no effect on basal  $I_{sc}$  ( $4.3 \pm 1.1 \mu\text{A cm}^{-2}$  in normocapnia and  $3.8 \pm 0.5 \mu\text{A cm}^{-2}$  in acute hypercapnia;  $P > 0.05$  vs. normocapnia;  $n = 6$ ; Fig. 9C). However, it was found that the basal  $I_{sc}$  was sensitive to apical amiloride ( $10 \mu\text{M}$ ), which reduced basal  $I_{sc}$  by  $5.0 \pm 0.9 \mu\text{A cm}^{-2}$  in normocapnia ( $n = 6$ ) and  $4.4 \pm 0.6 \mu\text{A cm}^{-2}$  in hypercapnia ( $P > 0.05$  vs. normocapnia;  $n = 6$ ), indicating that these cells expressed

functional epithelial  $\text{Na}^+$  channels (ENaC). Stimulation of cells with forskolin in normocapnia induced a maximal increase in  $I_{sc}$  of  $13.9 \pm 1.8 \mu\text{A cm}^{-2}$  ( $n = 6$ ) which was significantly reduced to  $8.8 \pm 1.3 \mu\text{A cm}^{-2}$  in cells that had been exposed to acute hypercapnia ( $P < 0.05$  vs. normocapnia;  $n = 6$ ; Fig. 9D). Furthermore, the rate of forskolin-stimulated  $I_{sc}$  increase was also significantly reduced from  $31.3 \pm 4.4 \mu\text{A cm}^{-2} \text{ min}^{-1}$  ( $n = 6$ ) in normocapnia to  $18.1 \pm 2.6 \mu\text{A cm}^{-2} \text{ min}^{-1}$  in hypercapnia ( $P < 0.05$  vs. normocapnia;  $n = 6$ ; Fig. 9E). These data are consistent with the findings from Calu-3 cells and suggest that hypercapnia reduces cAMP-stimulated CFTR-dependent anion transport in primary human airway epithelial cells as well as in an airway epithelial cell line. When measuring the amount of CFTR<sub>inh</sub>-172-sensitive current, it was again found that there was a clear trend for this to be lower in acute hypercapnia, supporting the findings that CFTR activity was reduced by 10%  $\text{CO}_2$ . As



**Figure 9. Forskolin-stimulated transepithelial anion secretion is reduced in conditions of acute hypercapnia in primary human bronchial epithelial cells**

Primary human bronchial epithelial cells were grown on collagen-coated permeable Snapwell supports and allowed to differentiate at an ALI for 30–35 days before  $I_{sc}$  was measured using an Ussing chamber. A, a representative  $I_{sc}$  recording of a control experiment in which cells were exposed to 5% (v/v)  $\text{CO}_2$ /95% (v/v)  $\text{O}_2$ ; B, a representative recording in which cells were pre-exposed to 10% (v/v)  $\text{CO}_2$ /90% (v/v)  $\text{O}_2$  for 20 min prior to being studied. Apical  $[\text{Cl}^-]$  and basolateral  $[\text{Cl}^-]$  were both 124 mM for these experiments. Cells were treated with apical amiloride (Amil;  $10 \mu\text{M}$ ) and stimulated with forskolin (Fsk;  $10 \mu\text{M}$ ) before addition of apical CFTR<sub>inh</sub>-172 ( $20 \mu\text{M}$ ) as indicated. C–F, basal  $I_{sc}$  (C), maximal forskolin-stimulated increase in  $I_{sc}$  (D), rate of increase in forskolin-stimulated  $I_{sc}$  (E) and amount of forskolin-stimulated current that was inhibited by CFTR<sub>inh</sub>-172 (F). \*Significant effect of hypercapnia ( $P < 0.05$ ). Data represent mean  $\pm$  SEM;  $n = 6$  for each.

shown in Fig. 9F, in normocapnia, forskolin-stimulated  $CFTR_{inh-172}$ -sensitive current was  $8.3 \pm 1.6 \mu A cm^{-2}$  and was reduced in hypercapnia to  $4.4 \pm 0.9 \mu A cm^{-2}$  ( $n = 6$ ;  $P > 0.05$  vs. normocapnia; Fig. 9F).

## Discussion

The ability of  $CO_2$  to act as a cell signalling molecule is currently gaining substantial support within human physiology. Here we show, for the first time, that hypercapnia modulates cAMP-dependent signalling, as well as cAMP-dependent ion and fluid transport, in both a human airway epithelial cell line and also in primary HBECs. We found that acute hypercapnia caused a significant reduction in forskolin-stimulated  $[cAMP]_i$  levels in Calu-3 cells – even in the presence of a PDE inhibitor – which was independent of  $CO_2$ -induced intracellular or extracellular acidosis (Fig. 1B). Interestingly, hypercapnia did not affect cAMP levels in cells stimulated with IBMX only (Fig. 1B), implying that the  $CO_2$ -induced attenuation of  $[cAMP]_i$  was not due to modulation of PDE activity, consistent with our previous results (Townsend *et al.* 2009; Cook *et al.* 2012). The apparent lack of effect of hypercapnia in the absence of forskolin suggests that for hypercapnia to alter tmAC activity, the cyclase needs to be in an active state. Zhang *et al.* (1997) have described the presence of hydrophobic forskolin binding pockets on tmAC, and forskolin binding at these sites induces a conformational change leading to dimerisation of the two catalytic subunits of tmAC. Thus, it seems likely that  $CO_2$  can only modulate tmAC activity when it is held within this ‘forskolin-bound’ state. Similar conformational changes in tmAC are induced when free  $G_{\alpha s}$  bind to the enzyme, implying that  $CO_2$  modulates tmAC activity *via* the same mechanism when cells are stimulated with G-protein coupled receptor agonists such as adenosine (Tesmer *et al.* 1997).

The hypercapnic-induced reduction in forskolin-stimulated cAMP levels also had significant effects on forskolin-stimulated transepithelial ion transport in Calu-3 cells. In the presence of a basolateral to apical  $Cl^-$  gradient, 10%  $CO_2$  caused an  $\sim 45\%$  reduction in the rate of forskolin-stimulated increase in  $CFTR_{inh-172}$  and bumetanide-sensitive  $I_{sc}$  (Fig. 2E). These findings imply that  $CO_2$ -induced changes in  $[cAMP]_i$  were sufficient to reduce CFTR-dependent electrogenic anion secretion in Calu-3 cells. Hypercapnia also produced the same effect when cells were stimulated with the physiological cAMP agonist adenosine but did not alter IBMX-stimulated changes in  $I_{sc}$  (Fig. 3). These findings indicated that  $CO_2$ -dependent reductions in  $[cAMP]_i$  were a result of modulations to tmAC-dependent cAMP production as opposed to PDE-dependent cAMP breakdown, which supports previous findings from our laboratory (Townsend *et al.* 2009; Cook *et al.* 2012).

We were also able to conclude that the modulations to cAMP-regulated anion transport in hypercapnia were not a result of the  $CO_2$ -induced intracellular acidosis as mimicking this acid load using sodium acetate did not alter forskolin-stimulated increases in  $I_{sc}$  (Fig. 4).

Biotinylation experiments further showed that the effect of hypercapnia on  $I_{sc}$  could not be explained by a reduction in surface levels of CFTR (Fig. 5). These findings support our hypothesis that in cAMP-stimulated conditions, the effects of  $CO_2$  were due to modulation of  $[cAMP]_i$  as opposed to  $CO_2$ -dependent effects on pathways involved in regulating CFTR surface expression, for instance endocytosis. Furthermore, these findings are of particular relevance given that hypercapnia has been shown to modulate the surface expression of the  $Na^+/K^+$ -ATPase in mammalian alveolar epithelia (Briva *et al.* 2007), which therefore suggests that  $CO_2$  only induces endocytosis of specific ion transporters. Acute hypercapnia also significantly lowered basal  $I_{sc}$  in Calu-3 cells. That a large component of this basal  $I_{sc}$  was sensitive to  $CFTR_{inh-172}$  suggests that hypercapnia also reduced the activity of CFTR under these conditions. However, hypercapnia did not alter levels of  $[cAMP]_i$  under resting conditions (Fig. 1B), and hypercapnia did not alter surface CFTR expression (Fig. 5), indicating that the effect of high  $CO_2$  on resting CFTR activity was independent of its effects on cAMP and not due to loss of CFTR at the plasma membrane. Therefore, why we observed a decrease in basal  $I_{sc}$  in Calu-3 cells exposed to acute hypercapnia remains unclear, but we cannot exclude the possibility that hypercapnia may have effects on basal  $[cAMP]_i$  that cannot be detected using our current method of quantification. Note that whilst hypercapnia induces a reversible intracellular acidosis (Fig. 1A) and that CFTR has been shown to be pH-sensitive (Reddy *et al.* 1998; Chen *et al.* 2009; Melani *et al.* 2010), the 10%  $CO_2$ -induced acidosis of  $\sim 0.2$  units is unlikely to significantly alter CFTR activity based on single channel recordings of CFTR expressed in mammalian cells (Chen *et al.* 2009) and measurements of CFTR-dependent  $Cl^-$  conductance made in human sweat ducts (Reddy *et al.* 1998). Furthermore, the fact that all measurements of cAMP-stimulated CFTR activity were made after cells had recovered  $pH_i$  in response to  $CO_2$ -induced acidosis also strongly argues against any  $pH_i$ -dependent effects on CFTR activity in hypercapnia.

To identify the transport of which anion ( $Cl^-$  or  $HCO_3^-$ ) hypercapnia was modulating,  $pH_i$  measurements were performed to indirectly measure  $HCO_3^-$  transport in real time in polarised cultures of Calu-3 cells. Importantly, we showed that cAMP-stimulated, pendrin-dependent apical  $HCO_3^-$  secretion and cAMP-stimulated, NBC-dependent basolateral  $HCO_3^-$  influx were both insensitive to hypercapnia (Figs 6 and 7), suggesting that hypercapnia did not alter  $HCO_3^-$  transport directly in Calu-3 cells. Thus, the results from the  $I_{sc}$

measurements suggested that the CO<sub>2</sub>-induced reduction in electrogenic anion secretion was specifically due to a reduction in transepithelial Cl<sup>-</sup> secretion. Thus, it appears that cAMP-regulated transporters have different sensitivities to CO<sub>2</sub>-induced decreases in [cAMP]<sub>i</sub> in Calu-3 cells. Although the reasons for this are unclear at the present, it is known that CFTR exists in a microdomain at the apical membrane of airway epithelial cells, in which cAMP signalling is highly compartmentalised (Barnes *et al.* 2005; Penmatsa *et al.* 2010). A decrease in cAMP levels in such a compartmentalised microdomain would have more pronounced effects than in areas of the cell where cAMP signalling is less compartmentalised, for instance at the basolateral subcellular location. Similarly, apical and basolateral microdomains may possess distinct tmAC isoforms that could display differential sensitivities to raised CO<sub>2</sub>.

We also observed similar results when investigating the effects of hypercapnia on cAMP-stimulated anion and fluid transport using a different approach. Incubating cells for 24 h in hypercapnia enabled us to assess the effect of hypercapnia on the volume, as well as the composition, of the secreted fluid (Fig. 8). We found that hypercapnia did not affect the amount of fluid secreted under basal conditions. This is consistent with results from Fig. 1B that demonstrated cAMP levels in non-stimulated Calu-3 cells were insensitive to hypercapnia. However, the fluid secretion data do contradict our  $I_{sc}$  measurements in which CFTR<sub>inh</sub>-172-sensitive basal  $I_{sc}$  was reduced in hypercapnia, suggesting that CFTR may be altered by hypercapnia through a cAMP-independent mechanism. Nonetheless, hypercapnia caused a significant reduction in the amount of secreted fluid under forskolin-stimulated conditions (Fig. 8A). We have previously shown that the volume of forskolin-stimulated fluid secretion is predominantly mediated by electrogenic CFTR-dependent Cl<sup>-</sup> secretion (Garnett *et al.* 2011), strongly suggesting that hypercapnia reduced fluid secretion *via* an effect on CFTR-dependent Cl<sup>-</sup> transport. This was probably due to the CO<sub>2</sub>-induced reduction in forskolin-stimulated cAMP levels (Fig. 1B). Although we demonstrated chronic hypercapnia did not affect the transepithelial resistance of Calu-3 monolayers, indicating paracellular ion and fluid transport was not altered by 10% CO<sub>2</sub>, one cannot rule out the possibility that hypercapnia may alter the water permeability of the epithelial monolayer, which would be another interesting effect of elevated CO<sub>2</sub>. However, unpublished findings from our laboratory have found that the osmolarity of secreted fluid in Calu-3 cells is unchanged in forskolin-stimulated cells compared to control cells. Thus, as we know forskolin to increase ion and fluid secretion in Calu-3 cells, these findings demonstrate that changes in transepithelial ion secretion do not alter water permeability and thus are unlikely to contribute to the changes in fluid secretion

observed in hypercapnia. Kim *et al.* (2014) also suggest water permeability is unchanged in Calu-3 cells even in conditions where ion secretion is stimulated. Interestingly, the [HCO<sub>3</sub><sup>-</sup>] of forskolin-stimulated fluid secretion was unaffected by chronic hypercapnia (Fig. 8B). Garnett *et al.* (2011) demonstrated that the pH of forskolin-secreted fluid was predominately regulated by the Cl<sup>-</sup>/HCO<sub>3</sub><sup>-</sup> exchanger pendrin, and not directly by CFTR, as fluid pH was insensitive to GlyH-101 or genetic knockdown of CFTR, but was reduced by pendrin K<sub>D</sub>. Thus, our results demonstrate that CFTR and pendrin exhibit differential sensitivities to CO<sub>2</sub>. In addition, neither forskolin nor hypercapnia had any effect on the amount of glycoprotein detected in apical secretions from Calu-3 cells, suggesting that neither treatment modified mucus secretion. Kreda *et al.* (2007) demonstrated that secretion of mucins by Calu-3 cells, including MUC5AC, was a result of Ca<sup>2+</sup>-dependent exocytosis of mucin granules, probably explaining why forskolin did not alter mucus secretion. Furthermore, these findings also imply that hypercapnia does not alter Ca<sup>2+</sup>-dependent mucin secretion and therefore only modulates cAMP-regulated responses.

Finally, the findings of acute hypercapnia on CFTR-dependent  $I_{sc}$  in Calu-3 cells were also replicated in fully differentiated HBECs. In these cells, 10% CO<sub>2</sub> also significantly reduced cAMP-stimulated CFTR-dependent anion transport (Fig. 9). Although we did not measure [cAMP]<sub>i</sub> in response to hypercapnia in HBECs, the ~42% decrease in the rate of forskolin-stimulated  $I_{sc}$  increase in HBECs was comparable to the ~45% decrease observed in Calu-3 cells, and thus suggests CO<sub>2</sub> elicited its effects *via* similar mechanisms in both cell types. However, one interesting difference was the fact that hypercapnia had no effect on basal  $I_{sc}$  in HBECs whereas it did in Calu-3 monolayers (see Figs 2C and 9C), suggesting that basal CFTR activity is less sensitive to CO<sub>2</sub> in primary airway epithelia. However, basal  $I_{sc}$  in Calu-3 cells was amiloride-insensitive (our unpublished observations), as opposed to the large component of basal  $I_{sc}$  in HBECs that was inhibited by amiloride, suggesting different transporters regulate basal  $I_{sc}$  in the two cell types and probably explaining the differences in response to hypercapnia. Furthermore, given there was no effect of CO<sub>2</sub> on amiloride-sensitive  $I_{sc}$  in HBECs, ENaC activity was probably insensitive to acute hypercapnia. This reinforces the findings that acute hypercapnia mediates specific effects on CFTR as opposed to other membrane ion transporters.

In summary, we have shown for the first time that acute hypercapnia reduced cAMP production as well as cAMP-stimulated, CFTR-dependent Cl<sup>-</sup>, but not HCO<sub>3</sub><sup>-</sup>, secretion in human airway epithelial cells. We propose that CO<sub>2</sub>-induced reductions in cytosolic cAMP inhibit CFTR activity and thus CFTR-dependent Cl<sup>-</sup> secretion. However, the lack of an effect on pendrin-dependent HCO<sub>3</sub><sup>-</sup> secretion implies that there



was sufficient residual CFTR activity to maintain  $\text{Cl}^-/\text{HCO}_3^-$  exchange by pendrin, and thus efficient  $\text{HCO}_3^-$  secretion persisted. This is consistent with our previous results in which we showed significant pendrin-mediated anion exchange activity was still present in Calu-3 cells where CFTR levels were knocked down by ~75% (Garnett *et al.* 2011). However, dysregulation of CFTR-dependent  $\text{Cl}^-$  and fluid secretion would be predicted to reduce airways hydration and compromise the innate defence mechanisms of the lungs (Pezzulo *et al.* 2012) predisposing the airways to bacterial colonisation. These findings are of particular relevance to patients suffering from chronic lung diseases, such as chronic obstructive pulmonary disease (COPD) or severe CF, in which bacterial infection is a major problem and hypercapnia is a complication. Thus, based on our findings, hypercapnia may be an additional contributing factor to airways pathophysiology in these situations (Lourenco & Miranda, 1968; Holland *et al.* 2003; Sheikh *et al.* 2011). However, the effects of hypercapnia that we have reported should also be considered for those patients receiving treatment for acute respiratory distress syndrome (ARDS) who suffer from pulmonary oedema due to increased permeability of the alveolar epithelium (Grommes & Soehnlein, 2011). These patients become hypercapnic as a consequence of their clinical treatment (Prin *et al.* 2002) and it has been postulated that it is the elevated  $\text{CO}_2$  that provides the beneficial effects of the treatment. We suggest that a potential protective role of hypercapnia for ARDS patients could be in the reduction in the amount of cAMP-stimulated fluid secretion in the airways, which would help to minimise the extent of the oedema without compromising the pH-dependent components of the airway innate defence mechanisms. Interestingly, our findings somewhat contradict those published by the Sznajder group who demonstrated that (i) hypercapnia reduced alveolar fluid reabsorption and thus increased pulmonary oedema in rat alveolar cells (Briva *et al.* 2007; Vadasz *et al.* 2008) and (ii) high  $\text{CO}_2$  increased apical  $[\text{cAMP}]_i$  in both A549 cells and rat alveolar type II cells (Lecuona *et al.* 2013). The findings reported here highlight potential differences in  $\text{CO}_2$  signalling between rat and humans as well as suggest that secretory cells of the conducting airways respond differently to hypercapnia compared to absorptive cells of the respiratory airways. Several studies have also implicated  $\text{CO}_2$  as an anti-inflammatory agent (Laffey *et al.* 2000; Sinclair *et al.* 2002; De Smet *et al.* 2007; Contreras *et al.* 2012; Oliver *et al.* 2012) whilst hypercapnia has also been shown to attenuate ventilator-induced lung injury in mice (Otulakowski *et al.* 2014). Our findings may suggest another possible protective role of hypercapnia in ARDS patients which would complement the other reported benefits of hypercapnia.

## References

- Adjianto J, Banzon T, Jalickee S, Wang NS & Miller SS (2009).  $\text{CO}_2$ -induced ion and fluid transport in human retinal pigment epithelium. *J Gen Physiol* **133**, 603–622.
- Ballard ST, Trout L, Garrison J & Inglis SK (2006). Ionic mechanism of forskolin-induced liquid secretion by porcine bronchi. *Am J Physiol Lung Cell Mol Physiol* **290**, L97–104.
- Barnes AP, Livera G, Huang P, Sun C, O'Neal WK, Conti M, Stutts MJ & Milgram SL (2005). Phosphodiesterase 4D forms a cAMP diffusion barrier at the apical membrane of the airway epithelium. *J Biol Chem* **280**, 7997–8003.
- Boucher RC (2007). Evidence for airway surface dehydration as the initiating event in CF airway disease. *J Intern Med* **261**, 5–16.
- Bouyer P, Zhou Y & Boron WF (2003). An increase in intracellular calcium concentration that is induced by basolateral  $\text{CO}_2$  in rabbit renal proximal tubule. *Am J Physiol Renal Physiol* **285**, F674–687.
- Briva A, Santos C, Malacrida L, Rocchiccioli F, Soto J, Angulo M, Batthyany C, Cairoli E & Piriz H (2011). Adenosine triphosphate-dependent calcium signaling during ventilator-induced lung injury is amplified by hypercapnia. *Exp Lung Res* **37**, 471–481.
- Briva A, Vadasz I, Lecuona E, Welch LC, Chen J, Dada LA, Trejo HE, Dumasius V, Azzam ZS, Myrianthefs PM, Batlle D, Gruenbaum Y & Sznajder JI (2007). High  $\text{CO}_2$  levels impair alveolar epithelial function independently of pH. *PLoS One* **2**, e1238.
- Buck J, Sinclair ML, Schapal L, Cann MJ & Levin LR (1999). Cytosolic adenylyl cyclase defines a unique signaling molecule in mammals. *Proc Natl Acad Sci USA* **96**, 79–84.
- Cann M (2004). Bicarbonate stimulated adenylyl cyclases. *IUBMB Life* **56**, 529–534.
- Cann MJ, Hammer A, Zhou J & Kanacher T (2003). A defined subset of adenylyl cyclases is regulated by bicarbonate ion. *J Biol Chem* **278**, 35033–35038.
- Chen EY, Yang N, Quinton PM & Chin WC (2010). A new role for bicarbonate in mucus formation. *Am J Physiol Lung Cell Mol Physiol* **299**, L542–549.
- Chen JH, Cai Z & Sheppard DN (2009). Direct sensing of intracellular pH by the cystic fibrosis transmembrane conductance regulator (CFTR)  $\text{Cl}^-$  channel. *J Biol Chem* **284**, 35495–35506.
- Chen Y, Cann MJ, Litvin TN, Iourgenko V, Sinclair ML, Levin LR & Buck J (2000). Soluble adenylyl cyclase as an evolutionarily conserved bicarbonate sensor. *Science* **289**, 625–628.
- Coakley RD, Grubb BR, Paradiso AM, Gatzky JT, Johnson LG, Kreda SM, O'Neal WK & Boucher RC (2003). Abnormal surface liquid pH regulation by cultured cystic fibrosis bronchial epithelium. *Proc Natl Acad Sci USA* **100**, 16083–16088.
- Cobb BR, Fan L, Kovacs TE, Sorscher EJ & Clancy JP (2003). Adenosine receptors and phosphodiesterase inhibitors stimulate  $\text{Cl}^-$  secretion in Calu-3 cells. *Am J Respir Cell Mol Biol* **29**, 410–418.

- Contreras M, Ansari B, Curley G, Higgins BD, Hassett P, O'Toole D & Laffey JG (2012). Hypercapnic acidosis attenuates ventilation-induced lung injury by a nuclear factor-kappaB-dependent mechanism. *Crit Care Med* **40**, 2622–2630.
- Cook ZC, Gray MA & Cann MJ (2012). Elevated carbon dioxide blunts mammalian cAMP signaling dependent on inositol 1,4,5-triphosphate receptor-mediated  $\text{Ca}^{2+}$  release. *J Biol Chem* **287**, 26291–26301.
- Cummins EP, Selfridge AC, Sporn PH, Sznajder JI & Taylor CT (2014). Carbon dioxide-sensing in organisms and its implications for human disease. *Cell Mol Life Sci* **71**, 831–845.
- Cuthbert AW, Supuran CT & MacVinish LJ (2003). Bicarbonate-dependent chloride secretion in Calu-3 epithelia in response to 7,8-benzoquinoline. *J Physiol* **551**, 79–92.
- De Smet HR, Bersten AD, Barr HA & Doyle IR (2007). Hypercapnic acidosis modulates inflammation, lung mechanics, and edema in the isolated perfused lung. *J Crit Care* **22**, 305–313.
- Devor DC, Singh AK, Lambert LC, DeLuca A, Frizzell RA & Bridges RJ (1999). Bicarbonate and chloride secretion in Calu-3 human airway epithelial cells. *J Gen Physiol* **113**, 743–760.
- Forrest IA, Murphy DM, Ward C, Jones D, Johnson GE, Archer L, Gould FK, Cawston TE, Lordan JL & Corris PA (2005). Primary airway epithelial cell culture from lung transplant recipients. *Eur Respir J* **26**, 1080–1085.
- Fulcher ML, Gabriel S, Burns KA, Yankaskas JR & Randell SH (2005). Well-differentiated human airway epithelial cell cultures. *Methods Mol Med* **107**, 183–206.
- Garcia MA, Yang N & Quinton PM (2009). Normal mouse intestinal mucus release requires cystic fibrosis transmembrane regulator-dependent bicarbonate secretion. *J Clin Invest* **119**, 2613–2622.
- Garnett JP, Hickman E, Burrows R, Hegyi P, Tiszlavicz L, Cuthbert AW, Fong P & Gray MA (2011). Novel role for pendrin in orchestrating bicarbonate secretion in cystic fibrosis transmembrane conductance regulator (CFTR)-expressing airway serous cells. *J Biol Chem* **286**, 41069–41082.
- Garnett JP, Hickman E, Tunkamnerdthai O, Cuthbert AW & Gray MA (2013). Protein phosphatase 1 coordinates CFTR-dependent airway epithelial  $\text{HCO}_3^-$  secretion by reciprocal regulation of apical and basolateral membrane  $\text{Cl}^-$ - $\text{HCO}_3^-$  exchangers. *Br J Pharmacol* **168**, 1946–1960.
- Grommes J & Soehnlein O (2011). Contribution of neutrophils to acute lung injury. *Mol Med* **17**, 293–307.
- Gustafsson JK, Ermund A, Ambort D, Johansson ME, Nilsson HE, Thorell K, Hebert H, Sjoval H & Hansson GC (2012). Bicarbonate and functional CFTR channel are required for proper mucin secretion and link cystic fibrosis with its mucus phenotype. *J Exp Med* **209**, 1263–1272.
- Guyenet PG, Stornetta RL, Abbott SB, Depuy SD, Fortuna MG & Kanbar R (2010). Central  $\text{CO}_2$  chemoreception and integrated neural mechanisms of cardiovascular and respiratory control. *J Appl Physiol* (1985) **108**, 995–1002.
- Hammer A, Hodgson DR & Cann MJ (2006). Regulation of prokaryotic adenylyl cyclases by  $\text{CO}_2$ . *Biochem J* **396**, 215–218.
- Hegyi P, Gray MA & Argent BE (2003). Substance P inhibits bicarbonate secretion from guinea pig pancreatic ducts by modulating an anion exchanger. *Am J Physiol Cell Physiol* **285**, C268–276.
- Holland AE, Wilson JW, Kotsimbos TC & Naughton MT (2003). Metabolic alkalosis contributes to acute hypercapnic respiratory failure in adult cystic fibrosis. *Chest* **124**, 490–493.
- Huang J, Shan J, Kim D, Liao J, Evagelidis A, Alper SL & Hanrahan JW (2012). Basolateral chloride loading by the anion exchanger type 2: role in fluid secretion by the human airway epithelial cell line Calu-3. *J Physiol* **590**, 5299–5316.
- Huckstepp RT & Dale N (2011).  $\text{CO}_2$ -dependent opening of an inwardly rectifying  $\text{K}^+$  channel. *Pflugers Arch* **461**, 337–344.
- Huckstepp RT, Eason R, Sachdev A & Dale N (2010a).  $\text{CO}_2$ -dependent opening of connexin 26 and related beta connexins. *J Physiol* **588**, 3921–3931.
- Huckstepp RT, id Bihi R, Eason R, Spyer KM, Dicke N, Willecke K, Marina N, Gourine AV & Dale N (2010b). Connexin hemichannel-mediated  $\text{CO}_2$ -dependent release of ATP in the medulla oblongata contributes to central respiratory chemosensitivity. *J Physiol* **588**, 3901–3920.
- Ianowski JP, Choi JY, Wine JJ & Hanrahan JW (2007). Mucus secretion by single tracheal submucosal glands from normal and cystic fibrosis transmembrane conductance regulator knockout mice. *J Physiol* **580**, 301–314.
- Johnson RA, Alvarez R & Salomon Y (1994). Determination of adenylyl cyclase catalytic activity using single and double column procedures. *Methods Enzymol* **238**, 31–56.
- Joo NS, Irokawa T, Wu JV, Robbins RC, Whyte RI & Wine JJ (2002). Absent secretion to vasoactive intestinal peptide in cystic fibrosis airway glands. *J Biol Chem* **277**, 50710–50715.
- Kim D, Liao J & Hanrahan JW (2014). The buffer capacity of airway epithelial secretions. *Front Physiol* **5**, 188.
- Kreda SM, Okada SF, van Heusden CA, O'Neal W, Gabriel S, Abdullah L, Davis CW, Boucher RC & Lazarowski ER (2007). Coordinated release of nucleotides and mucin from human airway epithelial Calu-3 cells. *J Physiol* **584**, 245–259.
- Kreda SM, Seminario-Vidal L, van Heusden CA, O'Neal W, Jones L, Boucher RC & Lazarowski ER (2010). Receptor-promoted exocytosis of airway epithelial mucin granules containing a spectrum of adenine nucleotides. *J Physiol* **588**, 2255–2267.
- Krouse ME, Talbott JF, Lee MM, Joo NS & Wine JJ (2004). Acid and base secretion in the Calu-3 model of human serous cells. *Am J Physiol Lung Cell Mol Physiol* **287**, L1274–L1283.
- Laffey JG, Tanaka M, Engelberts D, Luo X, Yuan S, Tanswell AK, Post M, Lindsay T & Kavanagh BP (2000). Therapeutic hypercapnia reduces pulmonary and systemic injury following in vivo lung reperfusion. *Am J Respir Crit Care Med* **162**, 2287–2294.
- Lecuona E, Sun H, Chen J, Trejo HE, Baker MA & Sznajder JI (2013). Protein kinase A- $\text{I}\alpha$  regulates Na,K-ATPase endocytosis in alveolar epithelial cells exposed to high  $\text{CO}_2$  concentrations. *Am J Respir Cell Mol Biol* **48**, 626–634.

- Lee MC, Penland CM, Widdicombe JH & Wine JJ (1998). Evidence that Calu-3 human airway cells secrete bicarbonate. *Am J Physiol* **274**, L450–453.
- Lee RJ & Foskett JK (2010). cAMP-activated  $\text{Ca}^{2+}$  signaling is required for CFTR-mediated serous cell fluid secretion in porcine and human airways. *J Clin Invest* **120**, 3137–3148.
- Lourenco RV & Miranda JM (1968). Drive and performance of the ventilatory apparatus in chronic obstructive lung disease. *N Engl J Med* **279**, 53–59.
- Marques PA, Magalhaes MC & Correia RN (2003). Inorganic plasma with physiological  $\text{CO}_2/\text{HCO}_3^-$  buffer. *Biomaterials* **24**, 1541–1548.
- Masereel B, Pochet L & Laeckmann D (2003). An overview of inhibitors of  $\text{Na}^+/\text{H}^+$  exchanger. *Eur J Med Chem* **38**, 547–554.
- Meigh L, Greenhalgh SA, Rodgers TL, Cann MJ, Roper DI & Dale N (2013).  $\text{CO}_2$  directly modulates connexin 26 by formation of carbamate bridges between subunits. *eLife* **2**, e01213.
- Melani R, Tomati V, Galiotta LJ & Zegarra-Moran O (2010). Modulation of cystic fibrosis transmembrane conductance regulator (CFTR) activity and genistein binding by cytosolic pH. *J Biol Chem* **285**, 41591–41596.
- Nishio K, Suzuki Y, Takeshita K, Aoki T, Kudo H, Sato N, Naoki K, Miyao N, Ishii M & Yamaguchi K (2001). Effects of hypercapnia and hypocapnia on  $[\text{Ca}^{2+}]_i$  mobilization in human pulmonary artery endothelial cells. *J Appl Physiol* (1985) **90**, 2094–2100.
- Oliver KM, Lenihan CR, Bruning U, Cheong A, Laffey JG, McLoughlin P, Taylor CT & Cummins EP (2012). Hypercapnia induces cleavage and nuclear localization of RelB protein, giving insight into  $\text{CO}_2$  sensing and signaling. *J Biol Chem* **287**, 14004–14011.
- Otulakowski G, Engelberts D, Gusarova GA, Bhattacharya J, Post M & Kavanagh BP (2014). Hypercapnia attenuates ventilator-induced lung injury via a disintegrin and metalloprotease-17. *J Physiol* **592**, 4507–4521.
- Penmatsa H, Zhang W, Yarlagadda S, Li C, Conoley VG, Yue J, Bahouth SW, Buddington RK, Zhang G, Nelson DJ, Sonecha MD, Manganiello V, Wine JJ & Naren AP (2010). Compartmentalized cyclic adenosine 3',5'-monophosphate at the plasma membrane clusters PDE3A and cystic fibrosis transmembrane conductance regulator into microdomains. *Mol Biol Cell* **21**, 1097–1110.
- Pezzulo AA, Tang XX, Hoegger MJ, Alaiwa MH, Ramachandran S, Moninger TO, Karp PH, Wohlford-Lenane CL, Haagsman HP, van Eijk M, Banfi B, Horswill AR, Stoltz DA, McCray PB, Jr, Welsh MJ & Zabner J (2012). Reduced airway surface pH impairs bacterial killing in the porcine cystic fibrosis lung. *Nature* **487**, 109–113.
- Prin S, Chergui K, Augarde R, Page B, Jardin F & Vieillard-Baron A (2002). Ability and safety of a heated humidifier to control hypercapnic acidosis in severe ARDS. *Intensive Care Med* **28**, 1756–1760.
- Reddy MM, Kopito RR & Quinton PM (1998). Cytosolic pH regulates GCl through control of phosphorylation states of CFTR. *Am J Physiol* **275**, C1040–1047.
- Ridley C, Kouvatso N, Raynal BD, Howard M, Collins RF, Desseyn JL, Jowitt TA, Baldock C, Davis CW, Hardingham TE & Thornton DJ (2014). Assembly of the respiratory mucin MUC5B: a new model for a gel-forming mucin. *J Biol Chem* **289**, 16409–16420.
- Roos A & Boron WF (1981). Intracellular pH. *Physiol Rev* **61**, 296–434.
- Shan J, Liao J, Huang J, Robert R, Palmer ML, Fahrenkrug SC, O'Grady SM & Hanrahan JW (2012). Bicarbonate-dependent chloride transport drives fluid secretion by the human airway epithelial cell line Calu-3. *J Physiol* **590**, 5273–5297.
- Sheikh HS, Tiangco ND, Harrell C & Vender RL (2011). Severe hypercapnia in critically ill adult cystic fibrosis patients. *J Clin Med Res* **3**, 209–212.
- Shen BQ, Finkbeiner WE, Wine JJ, Mrsny RJ & Widdicombe JH (1994). Calu-3: a human airway epithelial cell line that shows cAMP-dependent  $\text{Cl}^-$  secretion. *Am J Physiol* **266**, L493–501.
- Sinclair SE, Kregenow DA, Lamm WJ, Starr IR, Chi EY & Hlastala MP (2002). Hypercapnic acidosis is protective in an in vivo model of ventilator-induced lung injury. *Am J Respir Crit Care Med* **166**, 403–408.
- Somers VK, Mark AL, Zavala DC & Abboud FM (1989). Contrasting effects of hypoxia and hypercapnia on ventilation and sympathetic activity in humans. *J Appl Physiol* (1985) **67**, 2101–2106.
- Song Y, Salinas D, Nielson DW & Verkman AS (2006). Hyperacidity of secreted fluid from submucosal glands in early cystic fibrosis. *Am J Physiol Cell Physiol* **290**, C741–749.
- Tesmer JJ, Sunahara RK, Gilman AG & Sprang SR (1997). Crystal structure of the catalytic domains of adenylyl cyclase in a complex with  $\text{Gs}\alpha\text{.GTP}\gamma\text{S}$ . *Science* **278**, 1907–1916.
- Townsend PD, Holliday PM, Fenyk S, Hess KC, Gray MA, Hodgson DR & Cann MJ (2009). Stimulation of mammalian G-protein-responsive adenylyl cyclases by carbon dioxide. *J Biol Chem* **284**, 784–791.
- Vadasz I, Dada LA, Briva A, Trejo HE, Welch LC, Chen J, Toth PT, Lecuona E, Witters LA, Schumacker PT, Chandel NS, Seeger W & Sznajder JJ (2008). AMP-activated protein kinase regulates  $\text{CO}_2$ -induced alveolar epithelial dysfunction in rats and human cells by promoting  $\text{Na,K-ATPase}$  endocytosis. *J Clin Invest* **118**, 752–762.
- van der Laan-Luijckx IT, van der Laan S, Uglietti C, Schibig MF, Neubert REM, Meijer HAJ, Brand WA, Jordan A, Richter JM, Rothe M & Leuenberger MC (2013). Atmospheric  $\text{CO}_2$ ,  $\delta(\text{O}_2/\text{N}_2)$  and  $\delta^{13}\text{CO}_2$  measurements at Jungfraujoch, Switzerland: results from a flask sampling intercomparison program. *Atmospheric Measurement Techniques* **6**, 1805–1815.
- Welsh MJ & Smith JJ (2001). cAMP stimulation of  $\text{HCO}_3^-$  secretion across airway epithelia. *JOP* **2**, 291–293.
- Yang D, Shcheynikov N, Zeng W, Ohana E, So I, Ando H, Mizutani A, Mikoshiba K & Muallem S (2009). IRBIT coordinates epithelial fluid and  $\text{HCO}_3^-$  secretion by stimulating the transporters pNBC1 and CFTR in the murine pancreatic duct. *J Clin Invest* **119**, 193–202.
- Zhang G, Liu Y, Ruoho AE & Hurley JH (1997). Structure of the adenylyl cyclase catalytic core. *Nature* **386**, 247–253.

## Additional information

### Competing interests

None declared.

### Author Contributions

M.J.T., M.J.C. and M.A.G. conceived and designed the experiments. M.J.T., V.S., W.P., S.I. and B.V. conducted experiments and collected data. M.J.T., V.S. and W.P. performed data analysis. J.P.G. and C.W. provided resources. M.J.T., C.W., R.T., M.J.C. and M.A.G. drafted the article or revised it critically for important intellectual content.

### Funding

This work was supported by an MRC Studentship awarded to M.J.T., a BBSRC studentship to W.P. and an overseas studentship to S.H.I. funded by the Higher Committee for Education Development (HCED), Iraq. Additional funding was also provided by the Cystic Fibrosis Trust (Grant SRC003).

### Acknowledgements

The authors acknowledge the technical expertise of Yishan Luo in assisting with cell surface biotinylation experiments.