



HAL
open science

A hexagon in Saturn's northern stratosphere surrounding the emerging summertime polar vortex

L. Fletcher, G. Orton, J. Sinclair, S. Guerlet, P. Read, A. Antuñano, R. Achterberg, F. Flasar, P. Irwin, G. Bjoraker, et al.

► **To cite this version:**

L. Fletcher, G. Orton, J. Sinclair, S. Guerlet, P. Read, et al.. A hexagon in Saturn's northern stratosphere surrounding the emerging summertime polar vortex. *Nature Communications*, 2018, 9 (1), 10.1038/s41467-018-06017-3 . hal-02392309

HAL Id: hal-02392309

<https://hal.science/hal-02392309>

Submitted on 5 Jan 2021

HAL is a multi-disciplinary open access archive for the deposit and dissemination of scientific research documents, whether they are published or not. The documents may come from teaching and research institutions in France or abroad, or from public or private research centers.

L'archive ouverte pluridisciplinaire **HAL**, est destinée au dépôt et à la diffusion de documents scientifiques de niveau recherche, publiés ou non, émanant des établissements d'enseignement et de recherche français ou étrangers, des laboratoires publics ou privés.



Distributed under a Creative Commons Attribution - NoDerivatives 4.0 International License

ARTICLE

DOI: 10.1038/s41467-018-06017-3

OPEN

A hexagon in Saturn's northern stratosphere surrounding the emerging summertime polar vortex

L.N. Fletcher¹, G.S. Orton², J.A. Sinclair², S. Guerlet³, P.L. Read⁴, A. Antuñano¹, R.K. Achterberg⁵, F.M. Flasar⁶, P.G.J. Irwin⁴, G.L. Bjoraker⁶, J. Hurley⁷, B.E. Hesman⁸, M. Segura⁶, N. Gorius⁹, A. Mamoutkine⁶ & S.B. Calcutt⁴

Saturn's polar stratosphere exhibits the seasonal growth and dissipation of broad, warm vortices poleward of $\sim 75^\circ$ latitude, which are strongest in the summer and absent in winter. The longevity of the exploration of the Saturn system by Cassini allows the use of infrared spectroscopy to trace the formation of the North Polar Stratospheric Vortex (NPSV), a region of enhanced temperatures and elevated hydrocarbon abundances at millibar pressures. We constrain the timescales of stratospheric vortex formation and dissipation in both hemispheres. Although the NPSV formed during late northern spring, by the end of Cassini's reconnaissance (shortly after northern summer solstice), it still did not display the contrasts in temperature and composition that were evident at the south pole during southern summer. The newly formed NPSV was bounded by a strengthening stratospheric thermal gradient near 78°N . The emergent boundary was hexagonal, suggesting that the Rossby wave responsible for Saturn's long-lived polar hexagon—which was previously expected to be trapped in the troposphere—can influence the stratospheric temperatures some 300 km above Saturn's clouds.

¹Department of Physics & Astronomy, University of Leicester, University Road, Leicester LE1 7RH, UK. ²Jet Propulsion Laboratory, California Institute of Technology, 4800 Oak Grove Drive, Pasadena, CA 91109, USA. ³Laboratoire de Meteorologie Dynamique/IPSL, Sorbonne Université, École Normale Supérieure, PSL Research University, École Polytechnique, CNRS, F-75005 Paris, France. ⁴Department of Physics (Atmospheric, Oceanic and Planetary Physics), University of Oxford, Parks Road, Oxford OX1 3PU, UK. ⁵Department of Astronomy, University of Maryland, College Park, MD 20742, USA. ⁶NASA/Goddard Space Flight Center, Greenbelt, MD 20771, USA. ⁷STFC Rutherford Appleton Laboratory, Harwell Science and Innovation Campus, Didcot OX11 0QX, UK. ⁸Space Telescope Science Institute (STScI), 3700 San Martin Drive, Baltimore, MD 21218, USA. ⁹Department of Physics, The Catholic University of America, Washington, DC 20064, USA. Correspondence and requests for materials should be addressed to L.N.F. (Email: leigh.fletcher@le.ac.uk)

Polar vortices are important features of planet-wide atmospheric circulation systems on terrestrial worlds and giant planets alike, from Jupiter's turbulent polar environment¹ to Uranus' seasonal polar hood² and Neptune's warm south polar vortex³. Saturn's axial tilt of 26.7° renders its seasonally illuminated poles readily accessible from Earth, providing the paradigm for testing our understanding of the interplay between dynamics, chemistry, cloud formation and auroral processes in shaping giant planet polar environments. Saturn's stratosphere, some 200–300 km above the clouds, exhibits the growth and dissipation of broad, warm polar vortices over seasonal timescales (Saturn's orbit spans 30 Earth years), which are strongest in the summer and absent during winter^{4,5}. These vortices, which extend ~15° latitude away from the pole, are bounded by a strong latitudinal temperature gradient and are distinct from the compact, seasonally independent polar cyclones present in the troposphere^{5–10}. It has not been previously possible to constrain the formation timescales of Saturn's stratospheric vortices. By the time the Keck observatory observed Saturn in February 2004 (a planetocentric solar longitude of $L_s = 287^\circ$), 16 months after southern summer solstice (October 2002), the warm South Polar Stratospheric Vortex (SPSV) was already well established poleward of 70°S⁴. Half a Saturnian year earlier, when the NASA Infrared Telescope Facility observed Saturn's North Pole in March 1989 ($L_s = 104.5^\circ$), 15 months after the northern summer solstice (December 1987), the warm North Polar Stratospheric Vortex (NPSV) could already be seen¹¹. The longevity of Cassini's exploration of Saturn (2004–2017) now provides the first complete data set to trace the growth of the NPSV, as Saturn reached northern summer solstice ($L_s = 90^\circ$) in May 2017.

Previous work used 7–16 μm infrared spectroscopy obtained by the Cassini spacecraft¹² to trace the dissipation of the SPSV from northern winter (July 2004, $L_s = 293^\circ$) to northern spring (June 2014, $L_s = 56^\circ$). However, the seasonal evolution in the northern hemisphere was less dramatic: although the north had been warming, as expected from radiative and dynamical climate models^{13–15}, there was no sign of the sharp latitudinal thermal gradients (and hence vertical windshear) that had been associated with the SPSV at the beginning of Cassini's mission. This suggested¹² that the NPSV might begin to form during the remaining years of the Cassini mission (2014–2017, $L_s = 56–93^\circ$), during late spring or early summer.

Theoretical expectations for the warming and cooling of Saturn's stratosphere are hampered by an incomplete knowledge of both the distribution of opacity sources contributing to the radiative balance^{13,14,16} and of contributions from dynamical upwelling and subsidence^{14,17}. In particular, the primary stratospheric coolants (ethane and acetylene) are spatially and temporally variable due to both photochemistry and atmospheric circulation^{18–24}, and the rarity of studies constraining the properties of polar stratospheric aerosols prevents a comprehensive assessment of their contribution to the radiative budget^{13,25,26}. While subsidence within the vortices might be expected to cause heating by adiabatic compression, the increased hydrocarbon and aerosol abundances could balance this by enhanced radiative cooling, rendering this coupled radiative–dynamical–chemical balance extremely complex.

Here we provide observational evidence for the development of localised thermal and compositional gradients to understand the formation timescales of the NPSV and present the final status of Saturn's polar stratosphere at the end of the Cassini mission. Furthermore, the spatial resolution and sensitivity provided by the Composite Infrared Spectrometer (CIRS)²⁷ reveal a significant surprise: the NPSV exhibits a hexagonal boundary that mirrors the well-studied hexagonal wave in Saturn's troposphere^{28–30}. The meandering of the jet that forms the hexagon is believed to

be a Rossby wave³¹ resulting from an instability of the eastward zonal jet near 78°N^{29,32–34} and trapped within a waveguide formed by the zonal jets and Saturn's vertical static stability profile. We show here that Saturn's famous hexagon is not always restricted to the troposphere but can persist high in the stratosphere in the spring/summer, creating a hexagonal structure that spans more than ~300 km in height from the clouds to the stratospheric polar vortex.

Results

Hexagonal boundary of the NPSV. This study uses nadir-sounding spectroscopy from Cassini's CIRS^{27,35}, a 10–1400 cm^{-1} Fourier Transform Spectrometer with programmable spectral resolution between 0.5 and 15.5 cm^{-1} . We utilise the mid-infrared Michelson interferometer (600–1400 cm^{-1}), which featured two arrays of 1×10 HgCdTe detectors, each with an instantaneous field of view of 0.27×0.27 mrad. Spectra are inverted using an optimal estimation retrieval algorithm^{36,37} to characterise the upper tropospheric (80–300 mbar) and stratospheric (0.5–5.0 mbar) temperatures and composition³⁸ as a function of time (see Methods). Before performing spectral inversions, we begin with an investigation of the polar morphology observed in the raw brightness temperatures.

Figure 1 displays spatially resolved maps of CIRS brightness temperatures from 2013 to 2017. These are brightness temperatures averaged over the CH_4 Q band emission between 1280 and 1320 cm^{-1} and represent the kinetic temperatures over a broad range of altitudes between 0.5 and 5.0 mbar³⁸. For the purpose of these observations, the CIRS focal plane was slowly scanned from north to south as the planet rotated beneath over one or two rotations (10–20 h).

Four features are immediately evident in the maps. First, the brightness temperature has increased by approximately 10 K during the 4 years shown in this figure. Second, the compact polar cyclone⁵ is evident in the centre of each image, related to a strong negative vertical shear on the zonal jet at $87 \pm 1^\circ\text{N}$ (see below). Third, a boundary can be seen near 78°N in the later images, separating cooler low-latitude temperatures from warmer polar temperatures and suggesting the strengthening of the temperature gradient there. Finally, and most surprising, the boundary appears to have a hexagonal appearance in many of these images. Cassini demonstrated that Saturn's famous hexagonal wave²⁸, observed at the cloud tops ($p \sim 500$ mbar) since the Voyager era, was related to hexagonal temperature contrasts reaching as high as Saturn's tropopause ($p \sim 80–100$ mbar)⁵. However, at the conclusion of the 2004–2014 study¹², the north polar stratosphere did not exhibit enough of a latitudinal temperature gradient ($\partial T/\partial y$, where y is the north–south distance) to observe any contrast associated with the jet at 78°N. This is therefore the first evidence that Saturn's hexagon extends far higher than previously thought into the stably stratified middle atmosphere to the 0.5–5.0-mbar level.

There are limitations to what the CIRS observations can tell us. An attempt to provide a spatially resolved temperature retrieval of the stratospheric hexagon was unsuccessful, as the binned spectra did not have sufficient signal-to-noise to constrain the hexagonal shape of the temperature field as a function of altitude. We therefore cannot tell whether the hexagon is present at 5 mbar or at 0.5 mbar or a combination of both. However, data presented in the next section indicates that Saturn's banded structure is clearer at 5 mbar than at lower pressures, raising the likelihood that the hexagon is only detectable in the lower stratosphere ($p > 1$ mbar). Furthermore, the low signal in the pre-2014 data means that we cannot distinguish between scenarios where the hexagon is always present in the stratosphere irrespective of season or the hexagon is allowed to extend upwards due to the seasonally changing

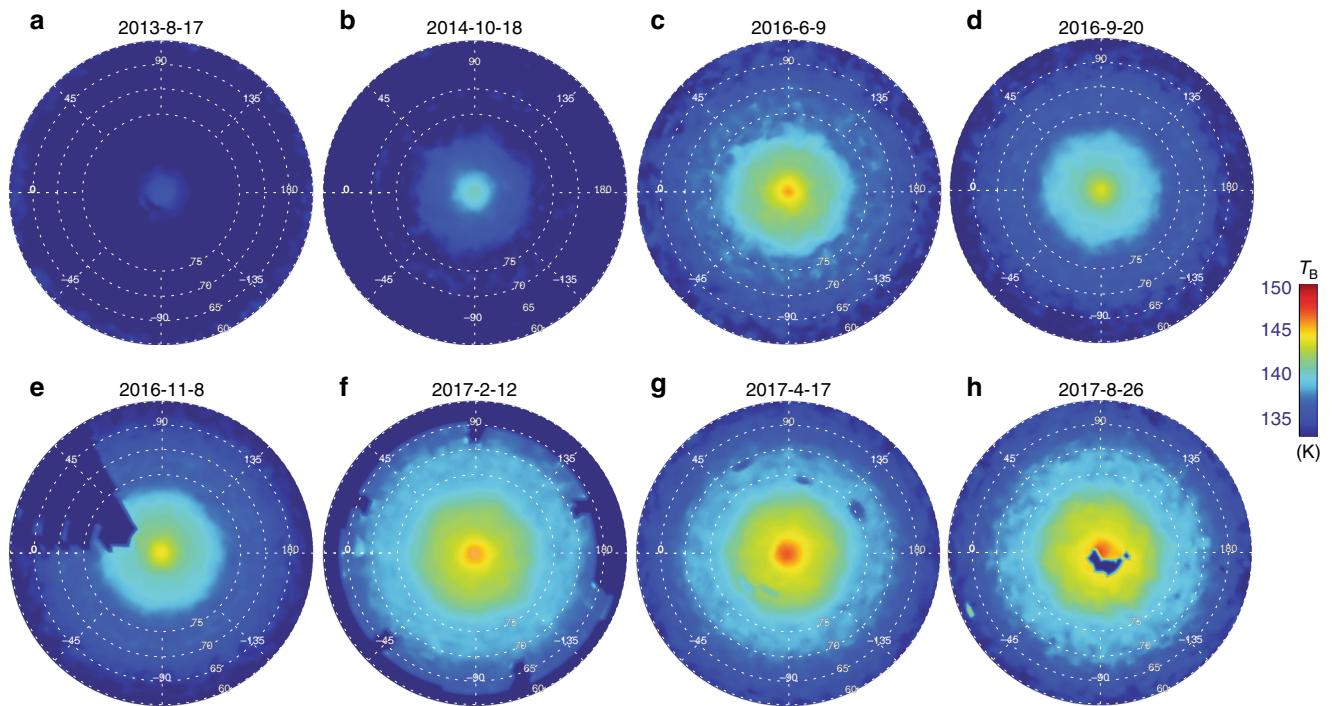


Fig. 1 Brightness temperature maps of the north polar stratosphere from 2013 to 2017. Brightness temperatures were averaged over the $1280\text{--}1320\text{ cm}^{-1}$ range sensing $0.5\text{--}5.0$ mbar, and each map has the same temperature scale. The figure indicates the hexagonal boundary to the polar stratospheric hood. The panels provide maps for **a** August 17, 2013, **b** October 18, 2014, **c** June 9, 2016, **d** September 20, 2016, **e** November 8, 2016, **f** February 12, 2017, **g** April 17, 2017 and **h** August 26, 2017. Maps with spectral resolutions of 2.5 cm^{-1} (REGMAPs) and 15.0 cm^{-1} (FIRMAPs) were used here, spanning Cassini's solstice mission and proximal orbits. These data were obtained from a relatively high orbital inclination to facilitate views of the north pole. Spectra have been averaged on an equal-area projection to reduce noise. Regions of dark blue represent missing data and defects—in particular, the central polar cyclone was partially obscured in the final FIRMAP of the mission acquired in August 2017 (**h**). The hexagonal boundary near $78\text{--}80^\circ$ latitude is clearest in the October 2014 (**b**), November 2016 (**e**) and February 2017 (**f**) data. The sinusoidal variation of temperature is shown in Fig. 2e–f for two dates

temperatures as summer solstice approaches (to be discussed below).

Figure 2 displays both a periodogram analysis and an attempt to fit a simple sinusoidal shape to the hexagon brightness temperatures in 2014 and 2017. The wavenumber-6 pattern is clearly detected in both the troposphere and stratosphere, and we find that the hexagon vertices differ in position by no more than 4° longitude between the two altitudes, so there appears to be no longitudinal translation in the pattern with height. Using the tropospheric maps, we find a clockwise (westward) translation of the hexagon pattern with time, equating to $((9.9 \pm 1.3) \times 10^{-3})^\circ \text{ day}^{-1}$ (using the System III West Longitude System). Performing the same calculation in the stratosphere yields $((7.6 \pm 1.9) \times 10^{-3})^\circ \text{ day}^{-1}$ such that the rotation rates are equivalent to within the uncertainties. Given that precise identification of the vertex longitudes is limited by the low spatial resolution and noise of the thermal maps, this drift rate is likely consistent with the $((12.8 \pm 1.3) \times 10^{-3})^\circ \text{ day}^{-1}$ estimate²⁹ from tracking the hexagon at the cloud tops between 2008 and 2014. The hexagon is therefore present in a least three altitude ranges separated by three decades of pressure, from the deep 2–3 bar troposphere⁸ to the tropopause⁵ and into the stratosphere, a vertical distance of ~ 300 km. Finally, we note that the tropospheric hexagon vertices do not move with the $\sim 120\text{ ms}^{-1}$ eastward cloud-top velocity of the jet at 78°N , so despite the strong windshear from the troposphere to the stratosphere (next section), the presence of a coherent wave in both altitude domains, with a coupled and very slow rotation, is plausible irrespective of the winds. The long-term temperature changes that allowed the hexagon to be visible in the stratosphere after 2014 will be explored in the next section.

Long-term temperature trends. Figure 3 displays the temperatures retrieved for each latitude (averaging spectra over longitude, see Methods) for a selection of stratospheric pressures as a function of time. These are interpolated in Fig. 4 to display the reconstructed temperatures for the North Pole and the South Pole for three altitudes (0.5, 1.0 and 5.0 mbar) in the stratosphere. Assuming geostrophic balance (a valid assumption at polar latitudes with Rossby numbers < 0.2 ²⁹), meridional temperature gradients ($\partial T/\partial y$, where y is the north–south distance) are in thermal wind balance with the vertical shear on the zonal winds³⁹ ($\partial u/\partial z$, where u is the zonal wind and z is altitude). This allows us to estimate the windshear $\partial u/\partial z = -(g/fT)\partial T/\partial y$, where g is the gravitational acceleration for each latitude and altitude and f is the Coriolis parameter. This provides us with a means of expressing the changing meridional gradients as a function of time, where the windshear can be interpreted as enhancing eastward winds (positive shear) or westward winds (negative shear) if a level-of-zero-motion exists somewhere in the lower stratosphere. Tropospheric temperatures and windshear are shown in Supplementary Figure 1.

Figure 4 allows us to compare the disappearance of the warm SPSV to the onset of the NPSV. Warm stratospheric polar vortices become evident when strong temperature gradients develop over time, strengthening negative windshear to promote westward winds. The zonal mean temperatures reveal latitudinal gradients that are strongest at 5 mbar, reminiscent of the banded structure that dominates in the troposphere. These contrasts are not as apparent at 0.5–1.0 mbar, where temperatures vary more smoothly with latitude and are dominated by negative shear

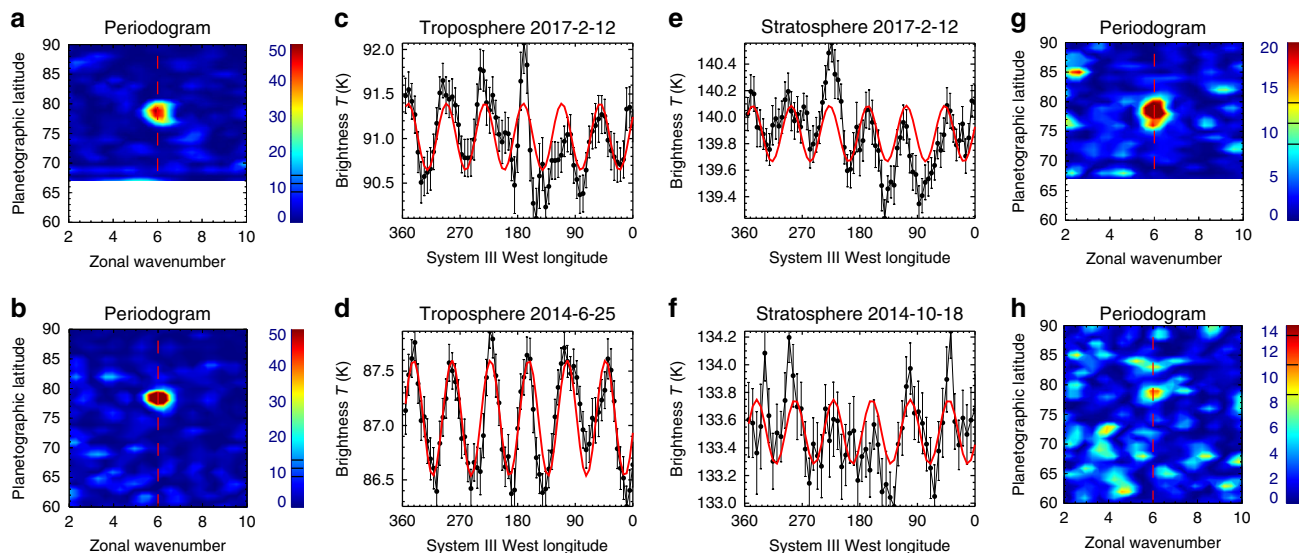


Fig. 2 Detection of the hexagon in the troposphere and stratosphere. **c–f** show brightness temperatures and their uncertainties in the troposphere (**c, d**, averaged over $600\text{--}620\text{ cm}^{-1}$) and stratosphere (**e, f**, averaged over $1280\text{--}1320\text{ cm}^{-1}$) extracted from $77\text{--}79^\circ\text{N}$ in the June 25, 2014 and February 12, 2017 REGMAP observations, and the October 18, 2014 FIRMAP observation. As a guideline, a wavenumber-6 sinusoid has been fitted to each observation (red curve), although the stratospheric map in 2014 is extremely noisy. **a, b, g, h** show the corresponding Lomb Scargle periodograms⁵, displayed as a function of latitude, showing the spectral power contained in each longitudinally resolved brightness temperature scan. Black lines on the colour bars represent false-alarm probabilities (from top to bottom) of 0.001, 0.01 and 0.1. A wavenumber-6 feature is clear in each data set near 78°N (vertical red dashed line), although the 2014 stratospheric hexagon is rather noisy (Fig. 1b). Using the sinusoidal fits, we detect a westward shift in the tropospheric hexagon vertices of $8.5 \pm 1.1^\circ$ over 963 days (the uncertainty comes from the quality of the sinusoidal fit). Offsets between the tropospheric and stratospheric vertices were $<4^\circ$ in February 2017

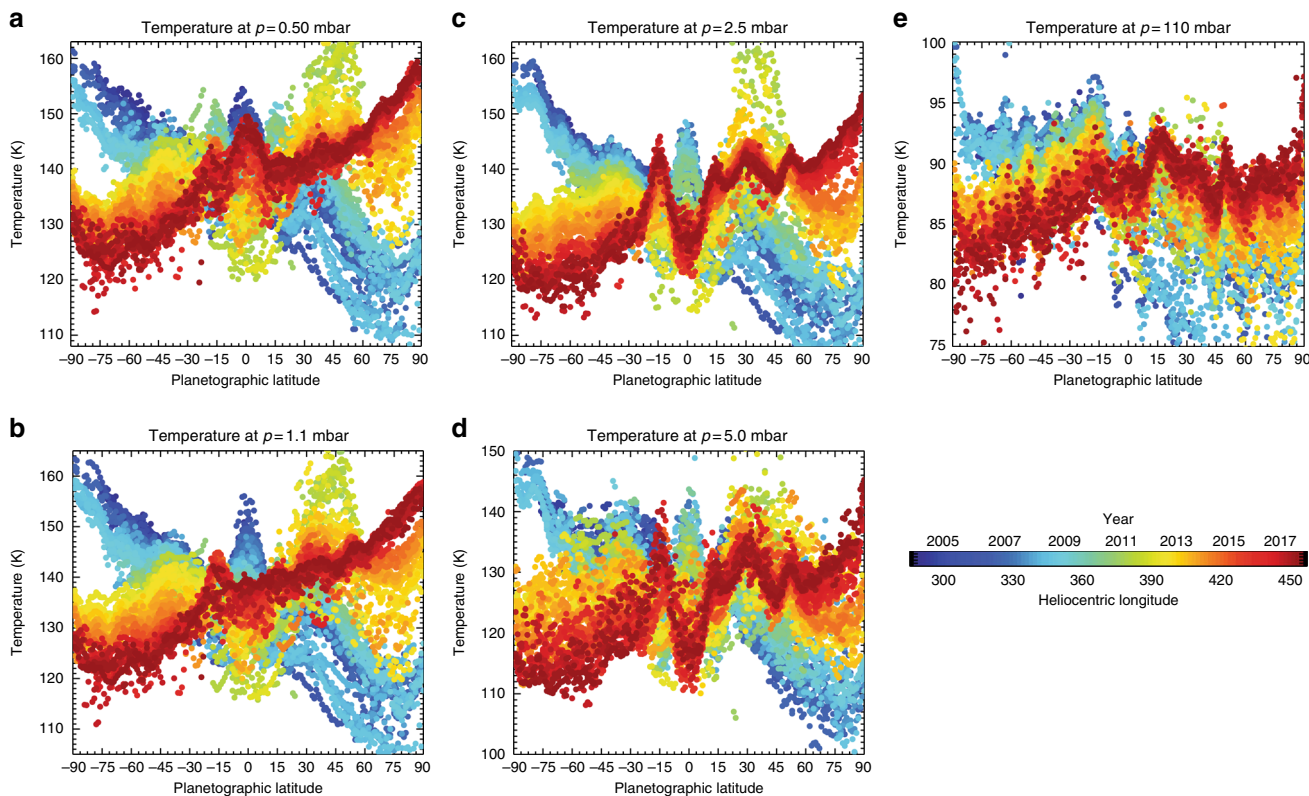


Fig. 3 Retrieved temperatures in the upper troposphere and stratosphere from the entire Cassini mission. Temperatures are displayed at five pressure levels: **a** 0.5 mbar, **b** 1.1 mbar, **c** 2.5 mbar, **d** 5.0 mbar, and **e** 110 mbar. Colours refer to dates given by the legend. Saturn's equatorial oscillation is observed at low latitudes⁵⁸, the effects of the Great Northern Storm are visible at northern mid-latitudes⁶¹ and the reversal of the stratospheric temperature asymmetry is most evident at the poles (this work)

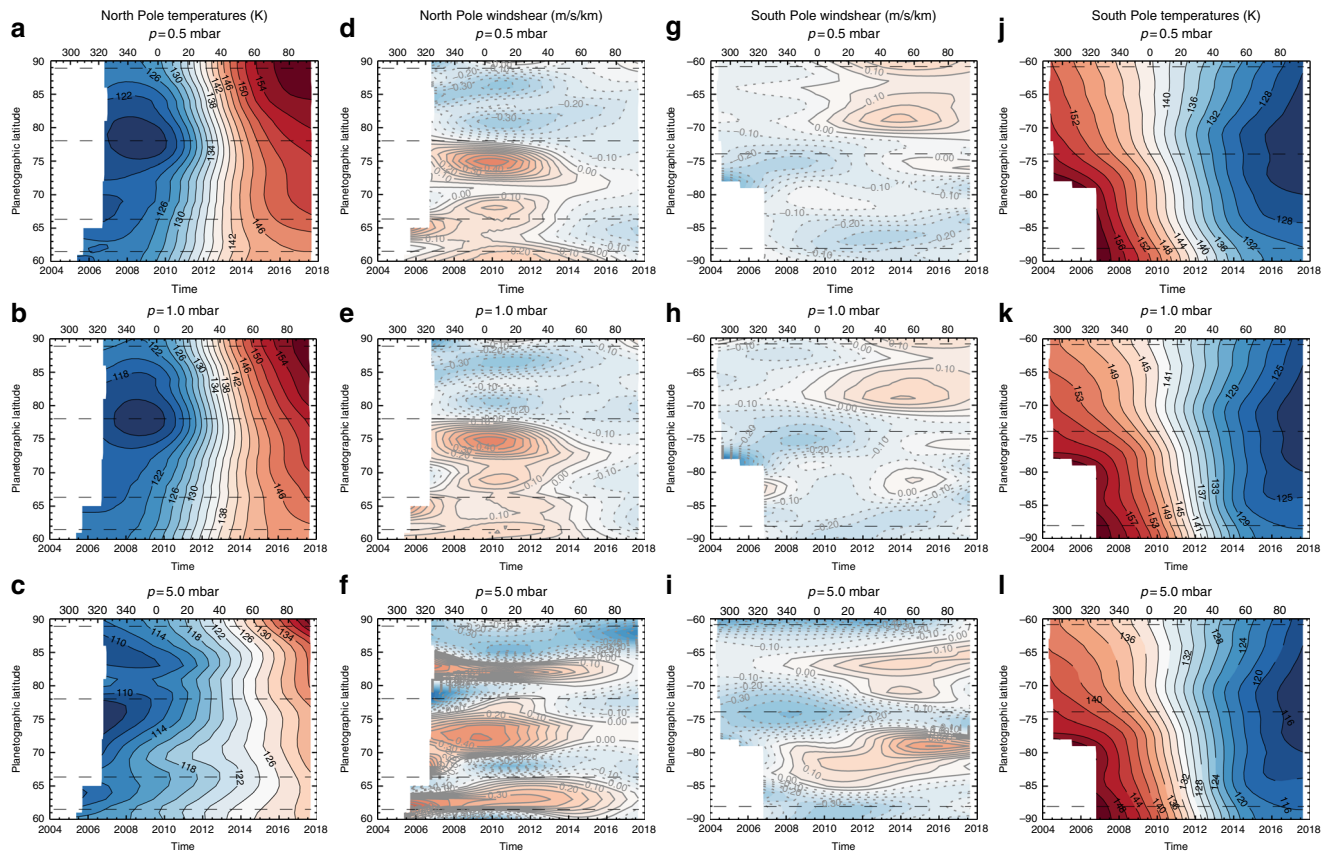


Fig. 4 North and South polar stratospheric temperature gradients as a function of time throughout the whole Cassini mission, 2004–2017. We display north polar temperatures (**a–c**), north polar windshears (**d–f**), south polar windshears (**g–i**) and south polar temperatures (**j–l**) at three different pressure levels (0.5, 1.0 and 5.0 mbar). These were derived from averages of low-resolution CIRS spectra on a monthly temporal grid and interpolated using tensioned splines⁴³ to reconstruct a smoothed temperature field. Horizontal dashed lines signify the peak of eastward zonal jets in the troposphere⁹. The data are displayed as a function of time (years), but a second horizontal axis provides the planetocentric solar longitude (L_s) in degrees

poleward of the prograde zonal jets at 78°N and 74°S . At the start of the Cassini time series, the SPSV had two primary structures: the negative dT/dy near 88°S that defines the edge of the compact polar cyclone⁴ and the negative dT/dy near 74°S that represents the edge of the SPSV⁵ (Fig. 4j–l). In 2006 ($L_s = 320^\circ$), temperatures increased towards the South Pole at all altitudes, but in 2007–2008 a cool band began to form at 5 mbar centred on 84°S , signified by the onset of the positive windshear in Fig. 4g–j. By 2013–2014 ($L_s \approx 40^\circ$), the negative shear at the SPSV boundary (74°S) had weakened considerably and a cool band was beginning to form near 80 – 85°S at 1 mbar, signifying the demise of the SPSV. The cooling and dissipation of the SPSV started pre-equinox ($L_s \approx 340^\circ$), as measured from the timing of the most negative windshear at 74°S .

The latitudinal structure of the vertical windshear in the northern hemisphere (Fig. 4d–f) is remarkably similar to that in the south, with higher pressures exhibiting banded temperature structures and lower pressures exhibiting smooth latitudinal gradients. Negative windshear dominates poleward of 78°N and $p < 1$ mbar throughout the time series, because temperatures have always increased towards 90°N despite the sequence starting in polar winter, counter to the expectations of radiative climate models^{12,13,40}. A 5-mbar region of positive windshear (Fig. 4c, f, i.e. a cool band, mirroring the one that formed in the SPSV) was centred on 83°N until 2017, when it had weakened and was replaced by warmer temperatures (i.e. 5-mbar temperatures increased everywhere poleward of $\sim 75^\circ\text{N}$ by the end of the mission). Similar positive windshear bands, centred over the broad

westward tropospheric jets, existed at $73 \pm 1^\circ\text{N}$ and $63 \pm 1^\circ\text{N}$, but these all weakened as Saturn approached solstice, indicating a positive dT/dy gradient throughout the north polar region. In particular, the temperatures near the 78°N eastward jet in Fig. 4a exhibited a strengthening $\partial T/\partial y$ gradient with time, signifying the development of the NPSV boundary. The windshear on this jet transitioned from weakly positive to negative at 5 mbar in 2012–2013 ($L_s \approx 40^\circ$), which would serve to promote westward winds surrounding the summertime vortex.

However, by the end of the mission near northern summer solstice ($L_s = 93^\circ$), the NPSV boundary windshear was less than half of that at the SPSV boundary in 2006–2008, and the 5-mbar temperature maximum (~ 140 K at 90°N in Fig. 4c) was still cooler than the maximum temperature at the south pole (~ 150 K at 90°S in Fig. 4l). So, although the NPSV had been developing a strong thermal gradient since the end of the last CIRS study in northern spring¹² and positive windshear zones had disappeared by northern summer, it still lacked the contrasts exhibited by the SPSV during the later parts of southern summer. As the thermal maximum lags behind the seasonal insolation maximum¹², we expect that the NPSV continued to warm beyond northern summer solstice and the end of the Cassini observations.

Composition of the NPSV and SPSV. Although the NPSV was forming in the final years of Cassini’s mission, the thermal gradients (and negative windshear) have not yet reached the extent of those observed in the southern hemisphere surrounding the SPSV. This may not be unexpected—northern summer occurred

near aphelion (April 17, 2018), whereas southern summer was closer to perihelion (July 26, 2003), implying a difference in the rate of energy deposition in the upper atmosphere. However, CIRS offers another technique for assessing the similarities and differences between the NPSV and SPSV by studying the relative enhancements of different chemical species within each vortex. This requires fitting high spectral resolution CIRS observations that stared directly at each vortex (see Methods), as shown for the NPSV in Fig. 5.

Vertical profiles of temperature, ethane and acetylene were derived starting from a broad ensemble of priors (see Methods) and are displayed in Fig. 6 for both the NPSV ($L_s = 88^\circ$) and the SPSV ($L_s = 346^\circ$). The temperature profiles are compared with the predictions of a radiative climate model¹³ for the same season, which assumed a time-invariant low-latitude mean of the stratospheric coolants ethane and acetylene derived from CIRS limb observations between 2005 and 2008²⁰. While the northern $T(p)$ is consistent with these predictions for 2–100 mbar, the southern $T(p)$ is always warmer, even though the maximum stratospheric temperatures ($T \sim 160$ K at 0.3–0.5 mbar) are similar at both poles. This hints at a missing source of heat in the radiative model for the lower stratosphere during southern summer that was not required in the north at $L_s = 88^\circ$, maybe due to stratospheric aerosols (radiative) or stronger polar subsidence (adiabatic heating)^{12,13,25}, the latter being supported by the excess C_2H_2 observed in the SPSV compared to the NPSV in Table 1, discussed below. At lower pressures, both the NPSV and SPSV inversions suggest a weak stratopause, with temperatures declining from 160 K at 0.3 mbar to ~ 150 K at 0.01 mbar, again consistent with the radiative model with and without the presence of polar aerosols²⁵. Although this is dependent on the prior and hampered by the nadir viewing geometry, it is worth noting that this decrease in temperature occurs even with an isothermal 170-K prior. Intriguingly, the presence of a

mesosphere overlying a warmer stratosphere was also inferred from ground-based IRTF observations of Saturn's southern hemisphere⁴¹ at $L_s = 268^\circ$, before Cassini's arrival.

The vertical hydrocarbon profiles in Fig. 6 are less well constrained than the temperatures, but they show that CIRS 0.5 cm^{-1} spectral resolution data can constrain the acetylene gradient between 0.05 and 5 mbar and the ethane gradient between 0.5 and 5 mbar. Outside of these ranges, the profiles diverge and tend back to their respective priors. For this reason, abundances at low pressures ($p < 0.1$ mbar) should be treated with caution, but there is a trend for the south polar data to exhibit well-mixed hydrocarbons with altitude (i.e. no deviation from the uniform prior at low pressures), whereas north polar ethane shows a slight decline with altitude and north polar acetylene shows a high-altitude peak near 0.01 mbar. Ethane is enhanced in the 0.5–5 mbar range compared to the expectations of photochemical models^{19,40,42} for both poles and exhibits a somewhat shallower vertical gradient than predicted. This is qualitatively consistent with the idea of a long-lived photochemical product being advected downwards over the pole. Conversely, the acetylene gradient is steeper than expected from the photochemical model, suggesting photochemical depletion at a rate that is faster than the downward advection. The 1-mbar acetylene abundance is well matched at the south pole but somewhat depleted at the north pole compared to predictions.

Minor hydrocarbons. Adopting the best-fitting (i.e. minimum χ^2) temperature, ethane, and acetylene profiles from Fig. 6, the 0.5- cm^{-1} spectra were used to search for evidence of minor species in both the NPSV and SPSV by scaling the model profiles¹⁹ of each species during the spectral inversion. Figure 7 shows the effect on the spectra of removing a gas species or doubling its best-fitting abundance, compared to the uncertainty

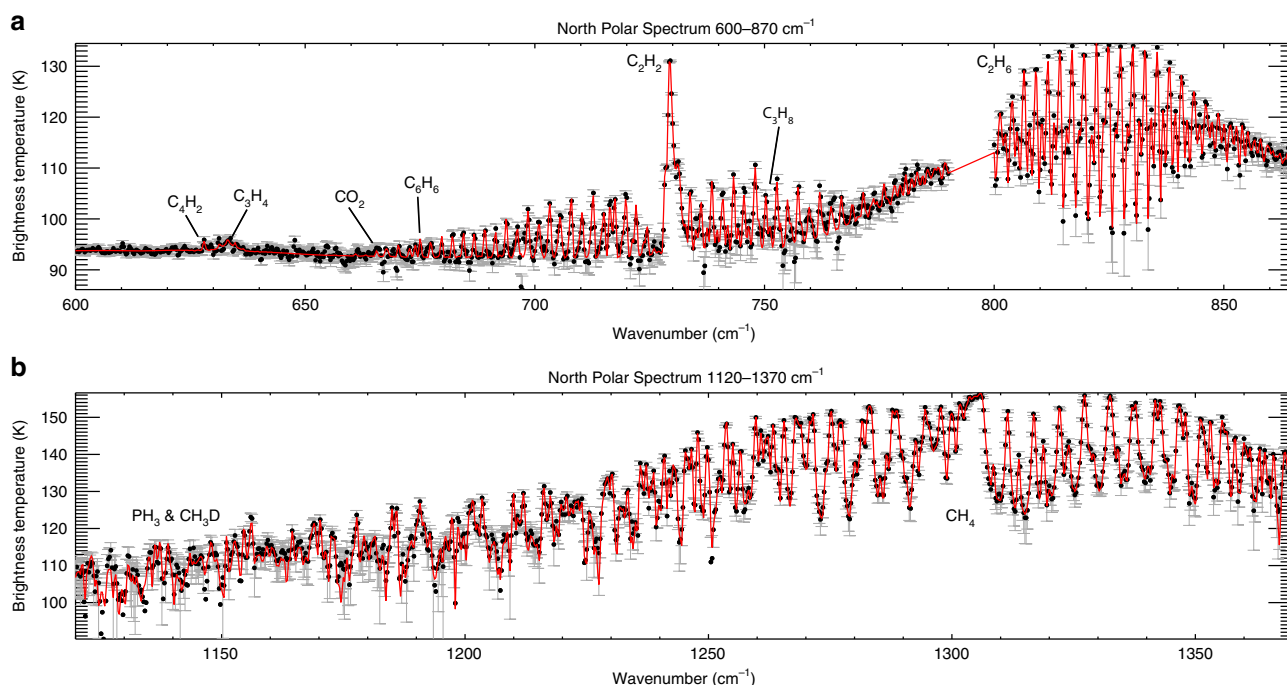


Fig. 5 Best-fitting brightness temperature spectrum for the 0.5- cm^{-1} resolution observation of the NPSV on March 27, 2017 (spanning 84–87°N). The figure shows the model fit (red) to the data (black points with grey uncertainties). The figure is split into the two spectral ranges used in the inversions: **a** 600–870 cm^{-1} and **b** 1120–1370 cm^{-1} . Key gaseous features are labelled. Data between 870 and 1120 cm^{-1} were omitted from the inversion. The measurement uncertainties (grey bars) depend on the number of coadded CIRS spectra and the number of deep space reference spectra used in the calibration

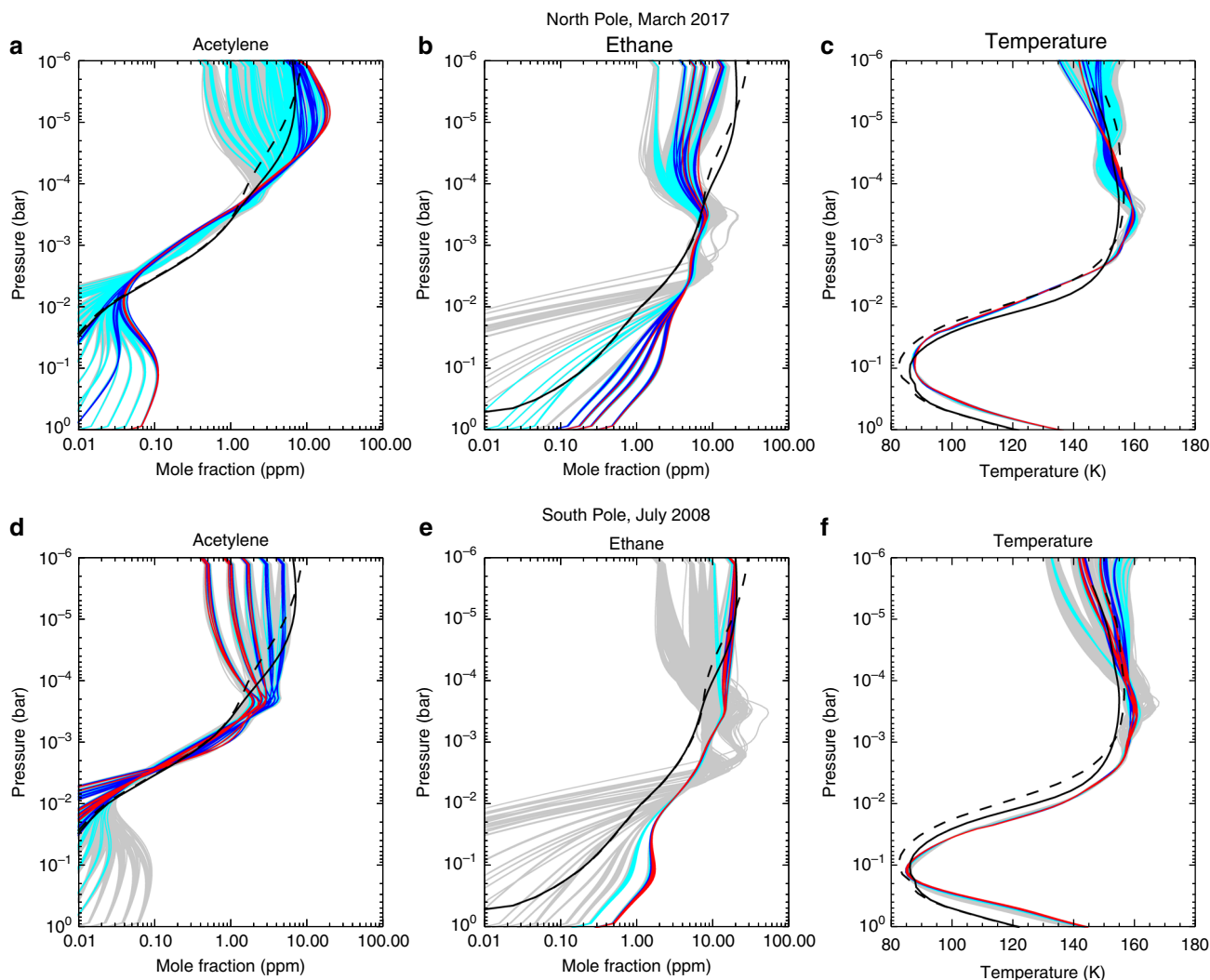


Fig. 6 Vertical distributions of temperature, acetylene and ethane derived from 0.5-cm⁻¹ spectral resolution data of both poles. The panels show COMSITs targeting the north pole in March 2017 (**a–c**, 84–87°N) and the south pole in July 2008 (**d–f**, 83–88°S). A grid of 2000 a priori atmospheres (varying the temperature and hydrocarbon distributions) was employed as starting point. Red lines indicate profiles fitting the spectrum within 1σ of the best fit, blue lines are for 2σ, turquoise lines are for 3σ and grey lines are for optimal estimates that do not fit within the 3σ envelope. We have confidence in retrieved profiles in altitude ranges where the profiles converge, irrespective of the a priori starting points. The hydrocarbon profiles are compared to the output of a diffusive photochemistry model¹⁹ at ±72° latitude for $L_s = 88^\circ$ (dashed black line) and $L_s = 346^\circ$ (solid black line). The temperature profiles are compared to the predictions of a radiative climate model¹³ in the absence of stratospheric aerosols for ±85° latitude and for $L_s = 88^\circ$ (dashed black line) and $L_s = 346^\circ$ (solid black line)

on the coadded CIRS spectrum. The change in χ^2 , evaluated over the spectral range shown in each figure, is given beneath each brightness temperature spectrum. Methyl acetylene and diacetylene are both clearly detected at both poles, whereas detections of propane, CO₂ and benzene are more marginal, particularly in the NPSV.

The retrieved abundances are recorded in Table 1 and show that the ratio of the NPSV and SPSV abundances are always <1, contrary to the expectations of a photochemical model¹⁹ for the same season. This provides another indication that the NPSV was not as mature as the SPSV when viewed at northern summer solstice. Only ethane and benzene have abundances that are consistent between both poles (although with the largest uncertainties), whereas all other species are less abundant by 20–60% in the north compared to the south. The uncertainties on the mole fractions in Table 1 are the uncertainties on the scale factor for the prior abundance—propane and diacetylene exceed the expectations of the photochemical model¹⁹, methyl acetylene

is close to expectations and CO₂ and benzene are smaller than expectations. That benzene is 0.6–0.8× <1-mbar photochemical predictions at the poles is consistent with previous findings using limb-sounding CIRS spectra²⁵. Nevertheless, the measured ratio deviates from the model ratio¹⁹ substantially for all but ethane and benzene.

There may be a weak trend with the longevity of the photochemical species¹⁸, with longer-lived ethane and propane showing the most similarity between the poles (ratios of 0.7–1.0) and the shorter-lived acetylene, diacetylene and methyl acetylene showing greater contrasts (0.2–0.6). This makes sense if the shorter-lived species are more sensitive to the dynamical and chemical changes associated with the polar vortex formation, although this qualitative view ignores any potential feedbacks between dynamics, chemistry and radiative cooling in the vortices. The challenge to future seasonal photochemistry models is to reproduce the observed gradients by better constraining the vertical and horizontal mixing rates.

Table 1 Abundances of gases in NPSV and SPSV at 1 mbar (ppbv) compared to the expected ratio from a photochemical model¹⁹ for the same season

Gas	NPSV	SPSV	Ratio (N/S)	Model ratio
Acetylene C ₂ H ₂	225 ± 65	423 ± 132	0.53 ± 0.23	1.04
Ethane C ₂ H ₆	8000 ± 1841	8214 ± 4585	0.97 ± 0.58	0.98
Methyl acetylene C ₃ H ₄	2.0 ± 0.2	3.3 ± 0.5	0.62 ± 0.11	0.91
Propane C ₃ H ₈	100 ± 16	147 ± 20	0.68 ± 0.14	0.96
Diacetylene C ₄ H ₂	0.11 ± 0.03	0.53 ± 0.07	0.20 ± 0.06	1.10
Benzene C ₆ H ₆	0.26 ± 0.10	0.33 ± 0.14	0.80 ± 0.45	0.95
Carbon dioxide CO ₂	0.2 ± 0.1	0.5 ± 0.2	0.37 ± 0.26	1.02

With the exception of ethane and acetylene, these values were derived by scaling the a priori profiles from Moses et al.¹⁹

Chemical distributions within the NPSV. Despite the strong constraints on abundances provided by the 0.5-cm⁻¹ CIRS spectra, they lack the spatial coverage to track the latitudinal variation of these species. A compromise is to consider the variations of only temperature, ethane and acetylene using the 2.5-cm⁻¹ resolution REGMAP observations. The north polar priors (Fig. 6a–c) were used as the starting point for latitudinally resolved retrievals between 2013 and 2017 shown in Fig. 8. These figures reinforce the warming trends described above and show the difference between $p < 1$ mbar, where the $\partial T/\partial y$ gradients are relatively smooth with latitude, and $p > 2$ mbar, where the banded structure that typifies the troposphere can be seen. The north polar cyclone is easily observed on all dates as the sharp temperature rise within 3° of the pole for $p > 1$ mbar but is not evident for $p < 1$ mbar. The 2.5-, 5- and 10-mbar temperature gradients are particularly strong across the latitude of the hexagonal jet at 78°N, which is why the stratospheric hexagon appears readily in Fig. 1.

The 1-mbar distributions of acetylene and ethane at the North Pole for the same three dates are shown in Fig. 9a, b and were generated by scaling the best-fitting vertical profiles in Fig. 6. We caution the reader that these simple scalings of the a priori gas abundances would omit any changes in the vertical hydrocarbon gradients, which are assumed to be invariant in the present study. These are compared to the 1-mbar abundances at both poles derived from the low-resolution inversions, which have been smoothed and interpolated via a tensioned spline^{12,43}. C₂H₂ shows a minimum near 75°N and increases towards the poles by a factor of ~2 (Fig. 9c), similar to that seen poleward of 75°S when the SPSV was present (Fig. 9e). However, while there was little change between 2013 and 2014, there has been a surprising drop in C₂H₂ by 2017 that is counter to the pre-2014 trend¹². This reduction is seen in both the 2.5-cm⁻¹ and 15-cm⁻¹ inversions, suggesting that the C₂H₂ abundance peaked before summer solstice. However, the comparison with the SPSV suggests that the NPSV has not reached the same elevated abundance during this time series, as suggested in Table 1.

The distribution of C₂H₆ is different, showing an overall increase in the northern hemisphere and a potential spike in the abundance poleward of 86°N (Fig. 9b), although this is not seen in the low-resolution time series (Fig. 9d). A similar high-latitude peak in ethane may have been present in the centre of the SPSV early in the Cassini mission (Fig. 9f). In summary, both C₂H₂ and C₂H₆ increase poleward of the NPSV boundary at 78°N, similar to chemical enhancements observed in the SPSV at the start of the Cassini mission. Such an increase is not seen in photochemical models that lack meridional motions^{19,42} and is further evidence that subsidence is occurring throughout the NPSV to generate the warming and elevated chemical abundances³⁰. Based on the record of the SPSV, we would expect these polar

enhancements to start to decline after the summer solstice ($L_s = 90^\circ$). However, we caution that ion chemistry in the auroral regions, which could also be modulating the hydrocarbon abundances, remains to be explored in detail.

Discussion

Our results indicate that Saturn's long-awaited NPSV started to develop during late northern spring ($L_s > 40^\circ$) but that temperature gradients only became positive poleward of 78°N at 5 mbar in 2017, around northern summer solstice ($L_s = 90^\circ$). Even so, neither the temperature gradients nor the peak temperatures nor the stratospheric molecular abundances were able to match those observed in the SPSV in late southern summer. Either the NPSV will never reach the same contrasts as those of the SPSV or the NPSV will continue to develop through early northern summer.

Most surprisingly, the boundary of the NPSV exhibited a hexagonal shape mirroring that observed in the clouds ~300 km below. Saturn's polar hexagon was discovered by Voyager²⁸, re-observed during Saturn's last northern summer in the early 1990s by Hubble⁴⁴ and ground-based facilities⁴⁵ and re-detected by Cassini in the thermal-infrared^{5,12}, near-infrared⁸ and visible^{9,10,29,46,47}. The meandering of the jetstream that forms the hexagon is believed to be a Rossby wave³¹ resulting from an instability of the eastward zonal jet near 78°N^{29,32–34} and trapped within a waveguide formed by the zonal jets.

Figure 10 shows how the two-dimensional (2D) temperatures and winds derived from the CIRS time series can be used to explore the nature of the wave and its vertical propagation. Mean zonal winds u are calculated via the thermal wind equation³⁹, using the latitudinal temperature gradients of Fig. 4 to integrate the cloud-top winds⁹ (assumed to reside at 500 mbar). Gradients in temperatures, winds and vorticity provide a valuable diagnostic tool for understanding wave propagation, and we follow previous work⁴⁸ in estimating the latitudinal gradient of quasi-geostrophic potential vorticity ($\beta_e = \partial q_G/\partial y$), where y is the north–south distance and q_G is the potential vorticity⁴⁹. β_e is the sum of three terms: (1) $\beta = \partial f/\partial y$, the northward gradient of planetary vorticity (i.e. the Coriolis parameter f); (2) $\beta_y = -\partial^2 u/\partial y^2$, the meridional curvature of the zonal wind field; and (3) β_z , related to the vertical curvature of the wind field and the static stability. This reduces to⁴⁸:

$$\beta_e = \beta + \beta_y + \beta_z \quad (1)$$

$$\beta_e = \beta - \frac{\partial^2 u}{\partial y^2} - \frac{1}{\rho} \frac{\partial}{\partial z} \left(\rho \frac{f^2}{N^2} \frac{\partial u}{\partial z} \right) \quad (2)$$

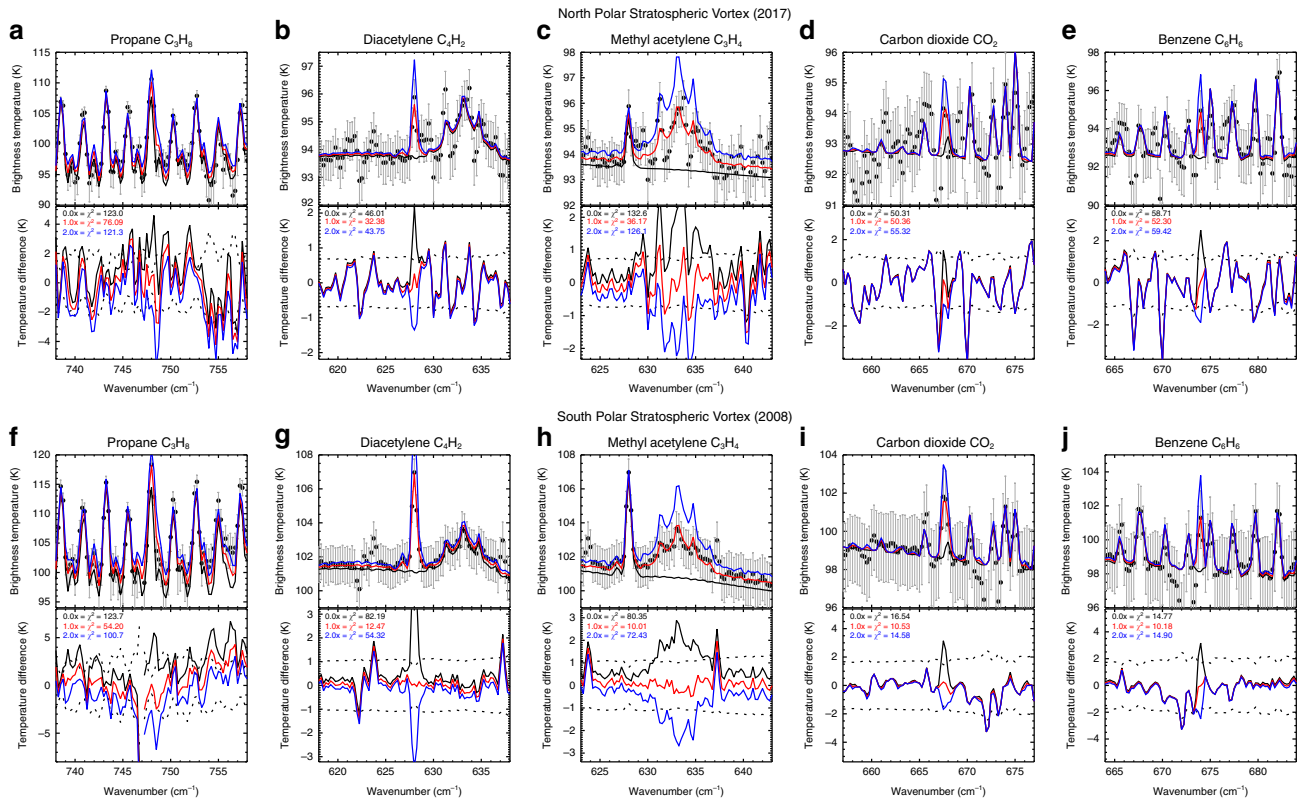


Fig. 7 Detection of minor species within Saturn’s northern and southern polar vortices. The NPSV was observed in March 2017 (a–e), the SPSV was observed in July 2008 (f–j), using the same data as in Fig. 6. Five minor species are shown: propane (a, f), diacetylene (b, g), methyl acetylene (c, h), carbon dioxide (d, i), and benzene (e, j). Once the best-fitting atmospheric profiles (temperatures and hydrocarbons) had been established, we scaled the abundance of five minor species by 0.0 (black), 1.0 (red) and 2.0 (blue) times to show their detectability in the spectrum. For each panel and gaseous species, we show the brightness temperature spectrum and its uncertainty, as well as the difference spectrum between the data and the model. The goodness-of-fit is reported for each model, with a $\Delta\chi^2 > 1$ signifying a 1σ detection

Here ρ is the density and N is the Brunt–Väisälä frequency: wavenumbers^{48,52}:

$$N^2 = \frac{g}{T} \left(\frac{\partial T}{\partial z} + \frac{g}{c_p} \right) \quad (3)$$

$$\nu^2 \equiv k^2 + l^2 + \left(\frac{f^2}{N^2} \right) m^2 \quad (4)$$

This can be related to the dispersion relationship for a three-dimensional Rossby wave in a baroclinic atmosphere⁵³:

$$\nu^2 = \frac{\beta_e}{u - c_x} - \frac{f^2 n^2}{N^2} \quad (5)$$

where n^2 includes the higher-order vertical derivatives of the buoyancy frequency^{48,52}. This index depends only on the phase speed of the wave (c_x) and the properties of the background medium (u , N^2 , scale height H , f and β_e). With known values of k and l , this can be rearranged to estimate the vertical wavenumber m : $m^2 > 0$ implies that Rossby waves are permitted to propagate in the vertical, whereas regions of $m^2 < 0$ imply evanescent waves that decay exponentially with altitude.

To investigate whether changing atmospheric conditions have permitted the tropospheric hexagon to propagate into the stratosphere, Fig. 10e shows the subtle changes in ν^2 since spring equinox, calculated assuming the measured phase speed of the tropospheric hexagon $c_x = -0.036 \text{ ms}^{-1}$ ²⁹, and confirms that regions of positive ν^2 are confined to low pressures by the static stability (the β_e term, which changed with time) and confined latitudinally by the curvature of the windfield (the β_y term, which was relatively constant over time). The hexagon latitude is characterised by a vertically extended region of positive ν^2 in the

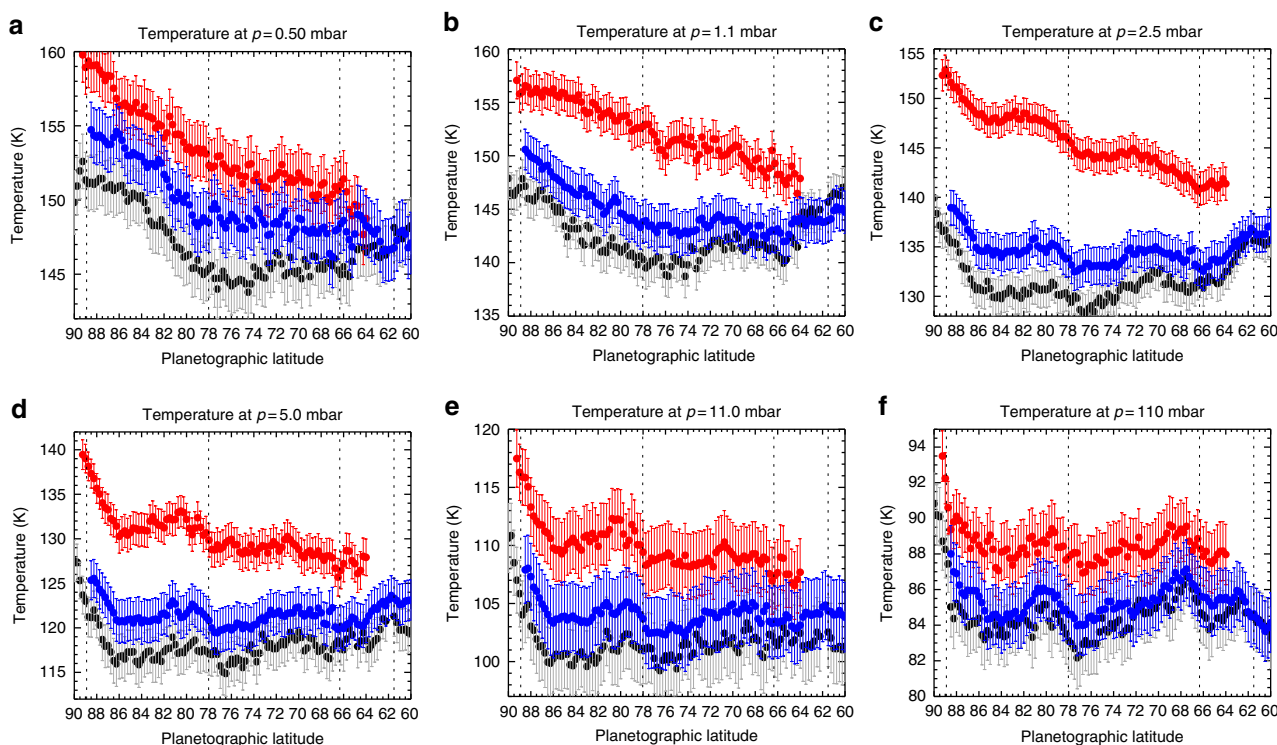


Fig. 8 Zonal-mean north polar temperatures for three REGMAP data sets showing the warming of the polar stratosphere. Temperatures are displayed at six pressure levels: **a** 0.5 mbar, **b** 1.1 mbar, **c** 2.5 mbar, **d** 5.0 mbar, **e** 11 mbar, and **f** 110 mbar. Three dates are included in each panel: August 17 2013 (black, REGMAP 196.001), June 25 2014 (blue, REGMAP 205.001), and February 12 2017 (red, REGMAP 261.003). Vertical dotted lines show the locations of prograde jet peaks⁹ for comparison with the meridional temperature gradients. Error bars represent the formal retrieval uncertainty. Note that the June 2014 data set utilised 15-cm⁻¹ resolution spectra, whereas the 2013 and 2017 data sets are better constrained by 2.5-cm⁻¹ resolution spectra

stratosphere coincident with a region of positive vorticity gradient β_e between 77–80°N, which is suggestive of a wave duct that can be seen to extend downwards as northern solstice approached (i.e. the static stability changed with season) but never quite reached the tropopause. These distributions are subject to large uncertainties⁴⁸, most notably because the temperatures and winds in the 5–80 mbar range are poorly constrained by the CIRS inversions (see Methods), such that quantitative values should be treated with caution.

However, taking values of $k = 2\pi/L_x$ (where $L_x = 14,500$ km is the length of the hexagon's side²⁹) and $l = 2\pi/L_y$ (where $L_y = 3150$ km, estimated as the distance between the two β_e sign changes at 77–80°N in Fig. 10d, which could demarcate the latitudinal boundaries of the wave), we searched for regions where vertical propagation is possible for a hexagon-like Rossby wave (i.e. where $m^2 > 0$). Although a region of positive m^2 does exist for the hexagon at $p > 600$ mbar (i.e. near the cloud tops), we found $m^2 < 0$ throughout the upper troposphere and stratosphere, supporting the 'trapped-wave' concept. This poses a problem for the hexagon observed in both the upper troposphere ($p \sim 100$ mbar) and stratosphere ($p \sim 1$ mbar).

At least two possibilities should therefore be considered. First, if the magnitude of the imaginary m were sufficiently small, any vertically propagating wave could travel by evanescence (tunnelling) over a limited altitude range from the troposphere into the stratosphere. Although the coupling of these two altitude ranges may be weak, the amplitude of a Rossby wave will still tend to increase with height because of the decreasing density of the air. The fact that we do not see any zonal phase shift of the hexagon vertices between the upper troposphere and stratosphere (Fig. 2) is consistent with the idea that the wave is not formally

propagating. Second, the β_e sign reversal in Fig. 10d shows that the atmosphere exhibits the necessary conditions for instability in the stratosphere, irrespective of what is happening in the troposphere. However, if such a pattern were excited independently, one would need to explain why it retains the same wavenumber, meridional amplitude and phase speed as its tropospheric counterpart. Such a stable phase alignment would require some form of dynamical coupling between these two altitude ranges. Distinguishing between these cases will require investigation via more detailed middle atmosphere modelling. Finally, we note that we found no evidence of stratospheric polygonal waves surrounding the SPSV during southern summer, consistent with their absence in the troposphere, and confirming the differences in dynamical stability of Saturn's northernmost (78°N) and southernmost (74°S) eastward jets.

Finally, we discuss potential sources of the heating responsible for the formation of the NPSV. Supplementary Figure 2 compares the CIRS temperatures at 1 mbar to the results of radiative models from several different studies. Although they differ in the details, each model qualitatively reproduces the amplitude of the temperature changes and the timing of the temperature minima/maxima. However, none of the models successfully reproduces the formation of $\partial T/\partial y$ gradients associated with the edges of the compact polar cyclones or the broad stratospheric vortices. All models account for the radiative balance between heating (methane and H₂ absorption) and cooling (from C₂H₂, C₂H₆ and, to a much smaller extent, CH₄ and the H₂ continuum), but they treat the distribution of the stratospheric coolants differently—some using mean abundances that are uniform with latitude and time^{13,14}, some using meridional distributions that are fixed with time¹⁵ and one⁴⁰ using temporally and spatially variable

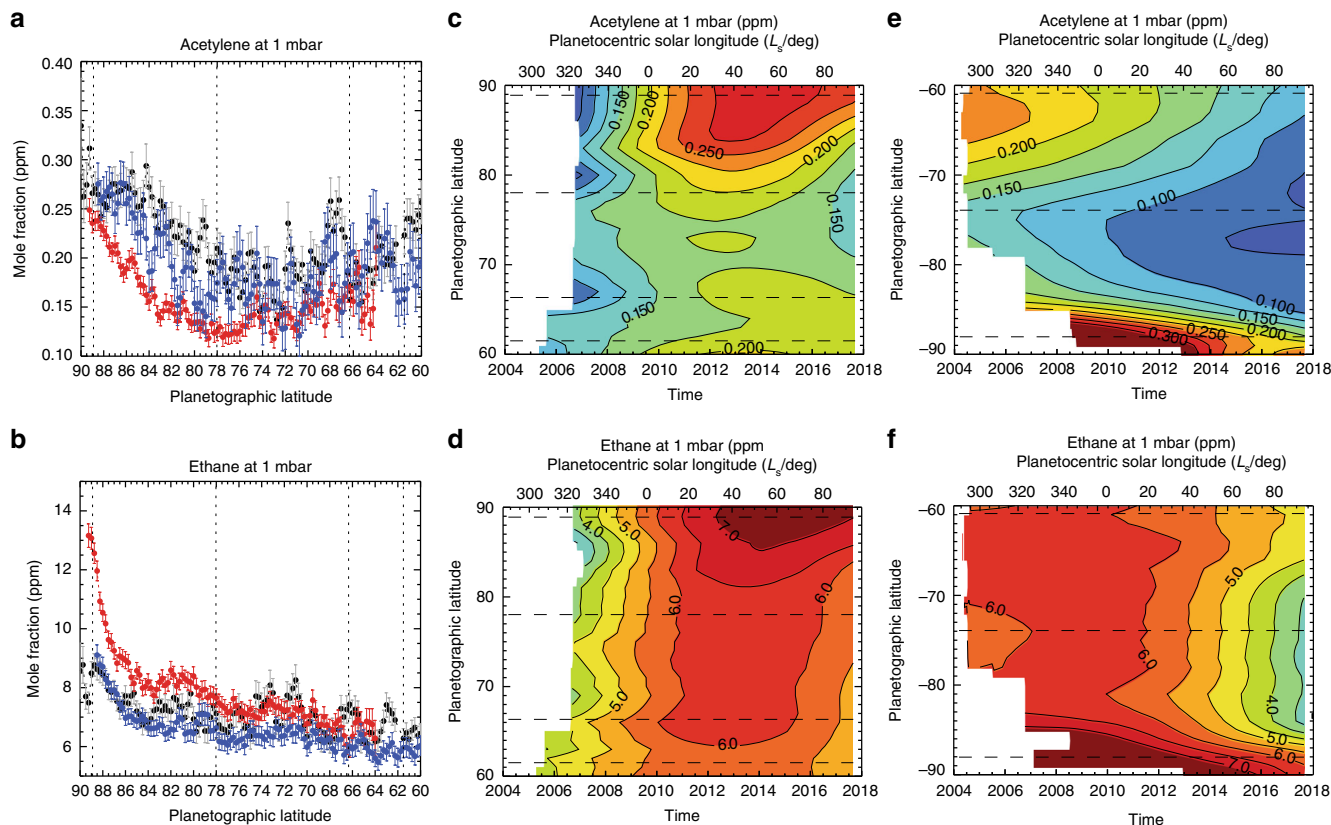


Fig. 9 Temporal evolution of polar ethane and acetylene. Latitudinal distributions of **a** acetylene and **b** ethane at 1 mbar as derived from spectra on August 17, 2013 (black, REGMAP 196.001), June 25, 2014 (blue, REGMAP 205.001) and February 12, 2017 (red, REGMAP 261.003). These results come from scaling of the hydrocarbon profiles derived for the north pole from the 0.5-cm⁻¹ resolution observations, at the same time as retrieving the temperature profiles in Fig. 8. Uncertainties on these retrieved scale factors are shown for each data point. The four contour plots show the spline-interpolated results for **c** north polar acetylene, **d** north polar ethane, **e** south polar acetylene and **f** south polar ethane from the low-resolution time series in Fig. 4. Dotted/dashed lines show the locations of prograde jet peaks⁹ in all six panels

abundances predicted by iterating between their seasonal photochemistry model⁴² and a radiative model¹⁵. None of these adequately represent the spike in hydrocarbon abundances in the NPSV and SPSV (Fig. 9) nor their temporal variation. To date, only one model¹⁴ includes circulation resulting from seasonal forcings (Supplementary Fig. 2c), making some progress in introducing sharper $\partial T/\partial y$ gradients, but this model was not designed with polar circulations in mind and does not generate gradients in the right locations.

Warming by polar subsidence of order 1 mm s⁻¹ at 1 mbar has been invoked to close the gap between the CIRS measurements and radiative models¹². However, aerosols also constitute a significant part of the radiative budget¹³, which can introduce a 5–6 K warming effect in the stratosphere²⁵. Aerosols are a challenge to include in a time-resolved seasonal model, primarily because the latitudinal distribution and temporal variability of upper tropospheric and stratospheric hazes remain poorly understood. A recent study of Saturn’s reflectivity by Cassini’s Imaging Science Subsystem⁴⁷ observed that the tropospheric hazes moved deeper and became optically thinner poleward of the hexagon. This provides further evidence that subsidence is occurring within the hexagon and that it extends from the cloud-forming region into the mid-stratosphere. In addition, the polar region exhibits an increased optical thickness of stratospheric hazes^{47,54} that is potentially related to aerosol production associated with Saturn’s aurora. Saturn’s main auroral oval, associated with the boundary between open and closed magnetic field lines, occurs at an average latitude of 76.5°N⁵⁵

and therefore completely encompasses the area of the NPSV, sitting ~1° south of the hexagon latitude (78°N). Stratospheric aerosols, irrespective of how they are formed, may be localised within the NPSV and SPSV and contribute to the sharp rise in stratospheric heating across the vortex boundaries. Currently, it is not possible to disentangle the complementary effects of radiative warming and atmospheric subsidence, although the elevated polar hydrocarbon abundances in Fig. 9 indicate that polar downwelling occurs within both vortices.

At nanobar pressures, far above the stratosphere, Saturn’s exospheric temperatures increase to ~400 K⁵⁶, but this value also shows latitudinal and seasonal fluctuations, being warmer in summer (with increased insolation increasing ionospheric conductivity and, therefore, Joule heating rates) than winter. On Jupiter, stratospheric temperatures are elevated within the auroral oval both by Joule heating and particulate absorption⁵⁷. Future work could address whether the processes heating the atmosphere at nanobar pressures could also influence the temperatures of Saturn’s polar stratosphere at millibar levels but would require a close coupling of thermospheric and stratospheric circulation, chemistry and radiative models that include the influences of aerosols.

That the formation and strengthening of the NPSV should be occurring right at the end of Cassini’s unprecedented 13-year mission is frustrating. Nevertheless, ground-based and space-based (James Webb Space Telescope) observations will continue to track its evolving temperature, composition and aerosol field, as well as the hexagonal boundary, whenever possible. This northern-summer

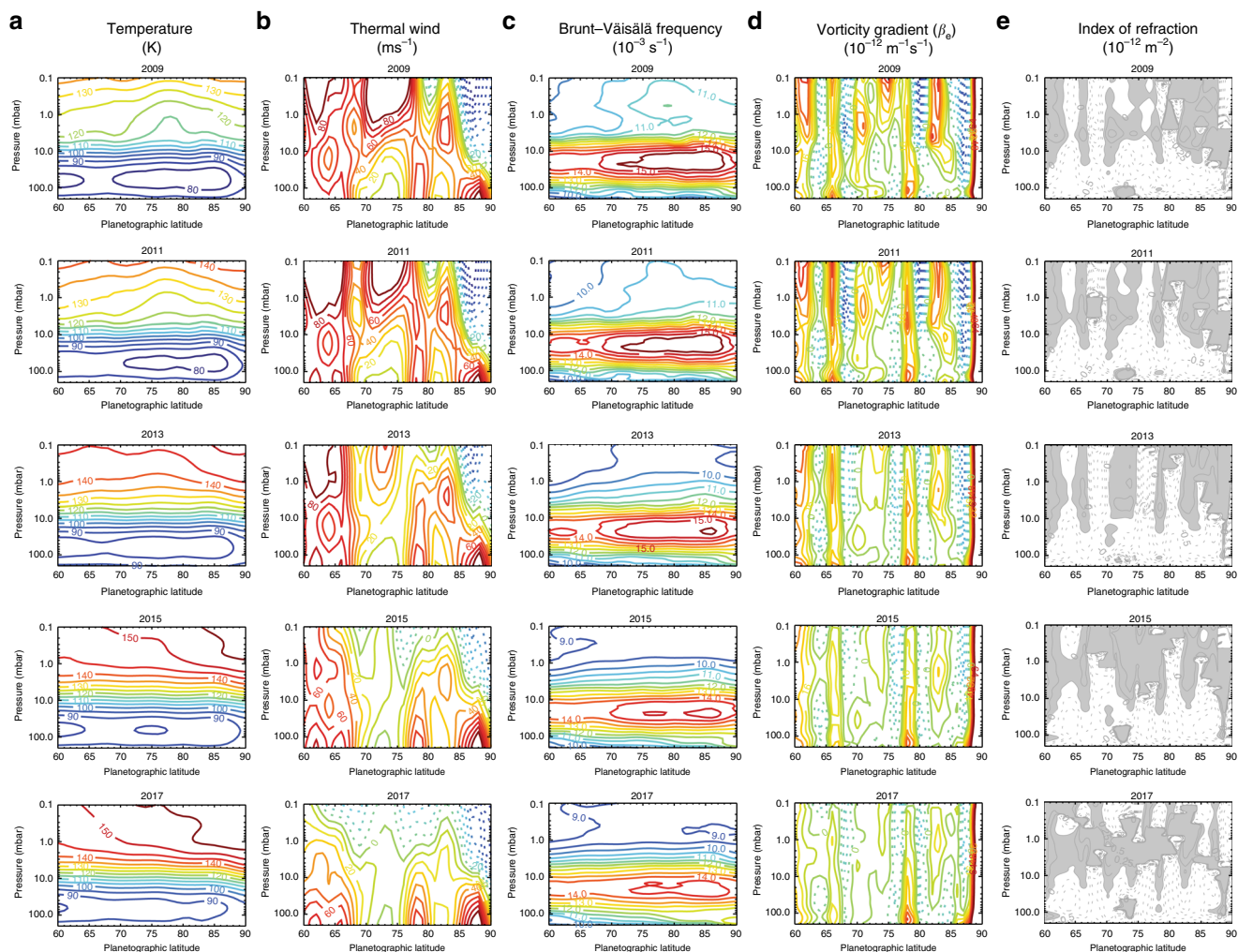


Fig. 10 Derived dynamical products based on the reconstructed north polar time series. Annual averages for 2009, 2011, 2013, 2015 and 2017 are shown in the five rows. We show **a** the temperatures T , **b** zonal winds u , **c** Brunt-Väisälä buoyancy frequency N , **d** effective vorticity gradient β_e and **e** the index of refraction v^2 . Negative values are shown as dotted contours, positive values as solid contours. In **e**, regions of real refractive index are shown in grey. In **d**, the scale for β_e ranges from $\pm 80 \times 10^{-12} \text{ m}^{-1} \text{ s}^{-1}$ in steps of $8 \times 10^{-12} \text{ m}^{-1} \text{ s}^{-1}$. Contour lines in **e** are drawn for $\pm 0.5 \times 10^{-12} \text{ m}^{-2}$, $\pm 0.25 \times 10^{-12} \text{ m}^{-2}$ and 0 m^{-2} . Given the uncertainties in the thermal winds (see Methods), these panels should be considered as qualitative trends rather than quantitative values

survey will include searches for any inter-annual variability between the NPSV observations in 1989¹¹ and those in 2018, one Saturnian year later.

Methods

Low-resolution CIRS time series. To track the evolving stratospheric temperature gradients as a function of latitude and time, we adopt a similar technique to previous work^{12,58}, truncating all CIRS interferograms so that they are all treated at the lowest possible spectral resolution of 15 cm^{-1} . This means that all CIRS Saturn observations, including those that rode along with other Cassini instruments, are considered. These are binned onto a monthly time grid on a 2° latitude grid (with a 1° step size) for all latitudes, retaining only observations within $\pm 10^\circ$ emission angle of the mean for each bin, and ensuring that this emission angle was $<60^\circ$. Data were also filtered for smearing due to fast motion of the focal plane across the disc: known interferences, instances of negative radiances introduced by shifting instrument temperatures, and examples where <10 spectra were available at a particular latitude and time. This produced approximately 13,000 spectra for inversion over the 2004–2017 timeline. At the spatial resolution and sensitivity of the CIRS data, Saturn's thermal structure is largely axisymmetric in the absence of large-scale storms and waves¹², so the coadded spectra are a good approximation of the zonal mean.

Spectral retrieval. Spectral inversions use the NEMESIS optimal estimation retrieval algorithm³⁷. The latitude-independent atmospheric prior and weighting between

measurement and a priori uncertainty are described by Fletcher et al.¹², whereas the sources of spectroscopic line data have been updated to those given in Supplementary Table 1 and the $\text{H}_2\text{-H}_2$ collision-induced opacities are from the compilation of free-free and dimeric contributions⁵⁹. The vertical temperature profile is retrieved alongside a scaling of the a priori ethane and acetylene abundances (additional hydrocarbon species are not visible at low spectral resolution but are considered only at high spectral resolution). Aerosols are omitted, and we assume the equilibrium distribution of para-hydrogen. The results for every latitude and month are shown in Fig. 3. Temperature uncertainties range from $\sim 3 \text{ K}$ at the tropopause to $1.5\text{--}2.0 \text{ K}$ near 200 mbar (the peak of the tropospheric contribution), $3.5\text{--}4.5 \text{ K}$ at $1\text{--}5 \text{ mbar}$ (the peak of the stratospheric contribution).

The resulting time series contains numerous outliers related to problems with calibration, incomplete longitude sampling, differences in spatial resolution, etc.¹². Although a quadratic fit to every latitude and altitude was previously used to interpolate and smooth the 10-year time series¹², we find that a quadratic was inadequate for the 14-year time series and instead adopt the tensioned spline-fitting technique⁴³ as a better representation of the expected sinusoidal variation of temperatures with season. Splines are best constrained near the middle of the time series and show divergence at the start and end but are still within the uncertainties of the earliest and latest CIRS measurements available.

Thermal winds. Integration of the thermal wind equation to estimate the zonal winds as a function of latitude and altitude is hampered by several factors⁵⁸: the vertical resolution of nadir spectra is limited to approximately a scale height, implying that regions of strong $\partial u/\partial z$ are smoothed with altitude; nadir spectra do

not sense $\partial T/\partial y$ gradients between 5 and 80 mbar, such that we have no knowledge of the windshear in the lower stratosphere; and the boundary conditions for the integration (namely, the altitude of the cloud-top winds) remains poorly constrained, and it likely to vary significantly with location on the planet. By the time the integration reaches millibar pressures, this can lead to uncertainties in the absolute values of the winds of hundreds of metres per second. Thus we caution the reader that the stratospheric winds derived from nadir remote sounding, in this study and all others, should be considered as only a qualitative guideline for the zonal motions of the middle atmosphere.

Composition from high-resolution CIRS data. The spectral resolution of the CIRS data used so far is insufficient for the identification of species beyond CH_4 , C_2H_2 and C_2H_6 , so we instead utilise observations acquired at 0.5 cm^{-1} by sitting and staring at a particular latitude (an observation design known as a COMPSIT). Observation 267_002 targeted the NPSV at 85°N for 8 h (1200 spectra) with a mean emission angle of 70° on March 27, 2017 ($L_s = 88.2^\circ$). This is compared to observation 076_001, which targeted the SPSV at 85°S for 8 h on July 15, 2008 ($L_s = 346^\circ$). Although the latter was closer to equinox than southern solstice, this was one of the first COMPSITs to target the south polar region, capturing the SPSV in its later stages. The NPSV spectrum is shown in Fig. 5, with key hydrocarbons labelled.

To reproduce these spectra, k -distributions were generated from the gases listed in Supplementary Table 1, and vertical profiles of stratospheric hydrocarbons were extracted from a 2D seasonal photochemistry model¹⁹. Given that this model includes an estimate for the vertical diffusion (K_{zz}) but assumes no meridional motion ($K_{yy} = 0$), we elected to take average polar compositions for 72°N and 72°S (the maximum poleward extent of the model) over the $L_s = 280\text{--}90^\circ$ range representing Cassini's mission. The profiles of methyl acetylene (C_3H_4), diacetylene (C_4H_2), carbon dioxide (CO_2), propane (C_3H_8) and benzene (C_6H_6) were simply scaled during the retrievals of full vertical profiles for temperature, ethane and acetylene. To test the sensitivity of the retrievals to the priors, we set up a grid of 2000 separate inversions for each pole, each with a different profiles for temperature, ethane and acetylene. The temperature priors merged tropospheric temperatures⁶⁰ with stratospheric isotherms from 130 to 170 K. The acetylene profile was parameterised as a uniform abundance (ranging from 0.5 to 5.0 ppm) for $1 < p < 300\ \mu\text{bar}$ and a decreasing abundance (linear in log-pressure) into the deeper stratosphere. The ethane profile was similar, with abundances of 2–20 ppm for $1 < p < 300\ \mu\text{bar}$ and a declining abundance for $p > 300\ \mu\text{bar}$. These values were broadly representative of those extracted from the photochemical model¹⁹.

The retrieved profiles, based on this grid of priors, are shown in Fig. 6 for both the NPSV ($L_s = 88^\circ$) and the SPSV ($L_s = 346^\circ$). Some inversions fit the CIRS spectra better than others, but where multiple profiles overlap, we can be confident that it is the data (rather than the prior) that is driving the inversion. For example, temperatures only begin to diverge for $p < 1\text{ mbar}$, whereas the gas profiles are best constrained in the 0.5–5.0-mbar range, approximately. The goodness-of-fit for the acetylene and ethane spectra were calculated from the 710–750 cm^{-1} and 800–840 cm^{-1} ranges, respectively, whereas the goodness-of-fit for temperature uses the full spectrum (600–900 cm^{-1} and 1120–1370 cm^{-1}).

Data availability

All data can be obtained from the primary author (L.N.F., email: leigh.fletcher@leicester.ac.uk) upon request or can be accessed from the following GitHub repository doi:10.5281/zenodo.1286856, which contains the temporally and latitudinally averaged spectra used in this study. Raw and calibrated Cassini Composite Infrared Spectrometer observations are available from NASA's Planetary Data System (PDS). The entire CIRS database was used in this study, but we provide unique data identifiers where data subsets were used in our figures. The NEMESIS spectral retrieval tool is available upon reasonable request from P.G.J.I. (patrick.irwin@physics.ox.ac.uk). The reconstructed temperature and hydrocarbon fields are also available at the DOI listed above.

Received: 24 March 2018 Accepted: 1 August 2018

Published online: 03 September 2018

References

- Bolton, S. J. et al. Jupiter's interior and deep atmosphere: the initial pole-to-pole passes with the Juno spacecraft. *Science* **356**, 821–825 (2017).
- de Pater, I. et al. Record-breaking storm activity on Uranus in 2014. *Icarus* **252**, 121–128 (2015).
- Orton, G., Encrenaz, T., Leyrat, C., Puetter, R. & Friedson, A. Evidence for methane escape and strong seasonal and dynamical perturbations of Neptune's atmospheric temperatures. *A&A* **473**, L5–L8 (2007).
- Orton, G. S. & Yanamandra-Fisher, P. A. Saturn's temperature field from high-resolution middle-infrared imaging. *Science* **307**, 696–698 (2005).
- Fletcher, L. N. et al. Temperature and composition of Saturn's polar hot spots and hexagon. *Science* **319**, 79–82 (2008).
- Sánchez-Lavega, A., Hueso, R., Pérez-Hoyos, S. & Rojas, J. F. A strong vortex in Saturn's South Pole. *Icarus* **184**, 524–531 (2006).
- Dyudina, U. et al. Dynamics of Saturn's south polar vortex. *Science* **319**, 1801 (2008).
- Baines, K. H. et al. Saturn's north polar cyclone and hexagon at depth revealed by Cassini/VIMS. *Planet. Space Sci.* **57**, 1671–1681 (2009).
- Antuñano, A., Ro-Gaztelurrutia, T., Sánchez-Lavega, A. & Hueso, R. Dynamics of Saturn's polar regions. *J. Geophys. Res. (Planets)* **120**, 155–176 (2015).
- Sayanagi, K. M., Blalock, J. J., Dyudina, U. A., Ewald, S. P. & Ingersoll, A. P. Cassini ISS observation of Saturn's north polar vortex and comparison to the south polar vortex. *Icarus* **285**, 68–82 (2017).
- Gezari, D. Y. et al. New features in Saturn's atmosphere revealed by high-resolution thermal infrared images. *Nature* **342**, 777–780 (1989).
- Fletcher, L. N. et al. Seasonal evolution of Saturn's polar temperatures and composition. *Icarus* **250**, 131–153 (2015).
- Guerlet, S. et al. Global climate modeling of Saturn's atmosphere. Part I: Evaluation of the radiative transfer model. *Icarus* **238**, 110–124 (2014).
- Friedson, A. J. & Moses, J. I. General circulation and transport in Saturn's upper troposphere and stratosphere. *Icarus* **218**, 861–875 (2012).
- Greathouse, T. K. et al. A general radiative seasonal climate model applied to Saturn, Uranus, and Neptune. AGU Fall Meeting Abstracts, abstr. P21B-06 (2008).
- Bézar, B. & Gautier, D. A seasonal climate model of the atmospheres of the giant planets at the Voyager encounter time. I - Saturn's stratosphere. *Icarus* **61**, 296–310 (1985).
- Conrath, B. J., Gierasch, P. J. & Leroy, S. S. Temperature and circulation in the stratosphere of the outer planets. *Icarus* **83**, 255–281 (1990).
- Moses, J. I. & Greathouse, T. K. Latitudinal and seasonal models of stratospheric photochemistry on Saturn: comparison with infrared data from IRTF/TEXES. *J. Geophys. Res. (Planets)* **110**, E09007 (2005).
- Moses, J. I., Liang, M.-C., Yung, Y. L. & Shia, R.-L. Two-dimensional photochemical modeling of hydrocarbon abundances on Saturn. In *38th Lunar and Planetary Science Conference*, LPI contribution no. 1338, 2196 (LPI, 2007).
- Guerlet, S., Fouchet, T., Bézar, B., Simon-Miller, A. A. & Flasar, F. M. Vertical and meridional distribution of ethane, acetylene and propane in Saturn's stratosphere from CIRS/Cassini limb observations. *Icarus* **203**, 214–232 (2009).
- Guerlet, S. et al. Meridional distribution of $\text{CH}_3\text{C}_2\text{H}$ and C_4H_2 in Saturn's stratosphere from CIRS/Cassini limb and nadir observations. *Icarus* **209**, 682–695 (2010).
- Sinclair, J. A. et al. Seasonal variations of temperature, acetylene and ethane in Saturn's atmosphere from 2005 to 2010, as observed by Cassini-CIRS. *Icarus* **225**, 257–271 (2013).
- Sylvestre, M. et al. Seasonal changes in Saturn's stratosphere inferred from Cassini/CIRS limb observations. *Icarus* **258**, 224–238 (2015).
- Fletcher, L. N., Greathouse, T. K., Moses, J. I., Guerlet, S. & West, R. A. Saturn's seasonally changing atmosphere: thermal structure, composition and aerosols. Preprint at <https://arxiv.org/abs/1510.05690> (2015).
- Guerlet, S. et al. Stratospheric benzene and hydrocarbon aerosols detected in Saturn's auroral regions. *A&A* **580**, A89 (2015).
- Koskinen, T. T., Moses, J. I., West, R. A., Guerlet, S. & Jouchoux, A. The detection of benzene in Saturn's upper atmosphere. *Geophys. Res. Lett.* **43**, 7895–7901 (2016).
- Flasar, F. M. et al. Exploring the Saturn system in the thermal infrared: the composite infrared spectrometer. *Space Sci. Rev.* **115**, 169–297 (2004).
- Godfrey, D. A. A hexagonal feature around Saturn's North Pole. *Icarus* **76**, 335–356 (1988).
- Sánchez-Lavega, A. et al. The long-term steady motion of Saturn's hexagon and the stability of its enclosed jet stream under seasonal changes. *Geophys. Res. Lett.* **41**, 1425–1431 (2014).
- Sayanagi, K. M. et al. Saturn's polar atmosphere. Preprint at <https://arxiv.org/abs/1609.09626> (2016).
- Allison, M., Godfrey, D. A. & Beebe, R. F. A wave dynamical interpretation of Saturn's polar hexagon. *Science* **247**, 1061–1063 (1990).
- Read, P. L. et al. Mapping potential vorticity dynamics on Saturn: zonal mean circulation from Cassini and Voyager data. *Planet. Space Sci.* **57**, 1682–1698 (2009).
- Barbosa Aguiar, A. C., Read, P. L., Wordsworth, R. D., Salter, T. & Hiro Yamazaki, Y. A laboratory model of Saturn's north polar hexagon. *Icarus* **206**, 755–763 (2010).
- Morales-Juberías, R., Sayanagi, K. M., Simon, A. A., Fletcher, L. N. & Cosentino, R. G. Meandering shallow atmospheric jet as a model of Saturn's north-polar hexagon. *Astrophys. J. Lett.* **806**, L18 (2015).

35. Jennings, D. E. et al. Composite infrared spectrometer (CIRS) on Cassini. *Appl. Opt.* **56**, 5274–5294 (2017).
36. Rodgers, C. D. *Inverse Methods for Atmospheric Remote Sensing: Theory and Practice* (World Scientific, 2000).
37. Irwin, P. et al. The NEMESIS planetary atmosphere radiative transfer and retrieval tool. *J. Quant. Spectrosc. Radiat. Transf.* **109**, 1136–1150 (2008).
38. Fletcher, L. N. et al. Characterising Saturn's vertical temperature structure from Cassini/CIRS. *Icarus* **189**, 457–478 (2007).
39. Holton, J. *An Introduction to Dynamic Meteorology* (Academic Press, San Diego, 2004).
40. Hue, V., Greathouse, T. K., Cavalié, T., Dobrijevic, M. & Hersant, F. 2D photochemical modeling of Saturn's stratosphere. Part II: Feedback between composition and temperature. *Icarus* **267**, 334–343 (2016).
41. Greathouse, T. K., Roe, H. G. & Richter, M. J. Evidence for a mesosphere on Saturn and the seasonal variation of temperature between 2002 and 2004 in Saturn's southern hemisphere. In *AAS/Division for Planetary Sciences Meeting Abstracts, vol. 37 of Bulletin of the American Astronomical Society*, 657 (AAS, 2005).
42. Hue, V., Cavalié, T., Dobrijevic, M., Hersant, F. & Greathouse, T. K. 2D photochemical modeling of Saturn's stratosphere. Part I: Seasonal variation of atmospheric composition without meridional transport. *Icarus* **257**, 163–184 (2015).
43. Teanby, N. Constrained smoothing of noisy data using splines in tension. *Math. Geol.* **39**, 419–434 (2007).
44. Caldwell, J., Hua, X.-M., Turgeon, B., Westphal, J. A. & Barnet, C. D. The drift of Saturn's north polar SPOT observed by the Hubble Space Telescope. *Science* **260**, 326–329 (1993).
45. Sánchez-Lavega, A., Lecacheux, J., Colas, F. & Laques, P. Ground-based observations of Saturn's north polar SPOT and hexagon. *Science* **260**, 329–332 (1993).
46. Antuñano, A., del Ro-Gaztelurrutia, T., Sánchez-Lavega, A. & Rodríguez-Aseguinolaza, J. Cloud morphology and dynamics in Saturn's northern polar region. *Icarus* **299**, 117–132 (2018).
47. Sanz-Requena, J. F., Pérez-Hoyos, S., Sánchez-Lavega, A., Antuñano, A. & Irwin, P. G. J. Haze and cloud structure of Saturn's North Pole and hexagon wave from Cassini/ISS imaging. *Icarus* **305**, 284–300 (2018).
48. Fletcher, L. N., Irwin, P. G. J., Achterberg, R. K., Orton, G. S. & Flasar, F. M. Seasonal variability of Saturn's tropospheric temperatures, winds and para-H₂ from Cassini far-IR spectroscopy. *Icarus* **264**, 137–159 (2016).
49. Andrews, D. G., Holton, J. R. & Leovy, C. B. *Middle Atmosphere Dynamics* (Academic Press, New York, 1987).
50. Charney, J. G. & Stern, M. E. On the stability of internal baroclinic jets in a rotating atmosphere. *J. Atmos. Sci.* **19**, 159–172 (1962).
51. Charney, J. G. & Drazin, P. G. Propagation of planetary-scale disturbances from the lower into the upper atmosphere. *J. Geophys. Res.* **66**, 83–109 (1961).
52. Achterberg, R. K. & Flasar, F. M. Planetary-scale thermal waves in Saturn's upper troposphere. *Icarus* **119**, 350–369 (1996).
53. Sánchez-Lavega, A. et al. Deep winds beneath Saturn's upper clouds from a seasonal long-lived planetary-scale storm. *Nature* **475**, 71–74 (2011).
54. West, R. A., Baines, K. H., Karkoschka, E. & Sánchez-Lavega, A. in *Saturn from Cassini-Huygens* (eds Dougherty, M., Esposito, L. & Krimigis, S.) Ch. 7 (Springer, Dordrecht, 2009).
55. Badman, S. V. et al. Location of Saturn's northern infrared aurora determined from Cassini VIMS images. *Geophys. Res. Lett.* **38**, L03102 (2011).
56. Koskinen, T. T. et al. Saturn's variable thermosphere from Cassini/UVIS occultations. *Icarus* **260**, 174–189 (2015).
57. Sinclair, J. A. et al. Jupiter's auroral-related stratospheric heating and chemistry II: analysis of IRTF-TEXES spectra measured in December 2014. *Icarus* **300**, 305–326 (2018).
58. Fletcher, L. N. et al. Disruption of Saturn's quasi-periodic equatorial oscillation by the Great Northern Storm. *Nat. Astron.* **1**, 765–770 (2017).
59. Fletcher, L. N., Gustafsson, M. & Orton, G. S. Hydrogen dimers in giant-planet infrared spectra. *Astrophys. J.* **235**, 24 (2018).
60. Fletcher, L. N., Orton, G. S., Teanby, N. A. & Irwin, P. G. J. Phosphine on Jupiter and Saturn from Cassini/CIRS. *Icarus* **202**, 543–564 (2009).
61. Fletcher, L. N. et al. The origin and evolution of Saturn's 2011–2012 stratospheric vortex. *Icarus* **221**, 560–586 (2012).

Acknowledgements

This work is based on data acquired by the Cassini Composite Infrared Spectrometer and would not have been possible without the tireless efforts of the instrument design, operations, and calibration team over more than two decades. L.N.F. was supported by a Royal Society Research Fellowship and European Research Council Consolidator Grant (under the European Union's Horizon 2020 research and innovation programme, grant agreement No 723890) at the University of Leicester. The UK authors acknowledge the support of the Science and Technology Facilities Council (STFC). A portion of this work was performed by GSO at the Jet Propulsion Laboratory, California Institute of Technology, under a contract with NASA. J.A.S. was supported by the NASA Postdoctoral and Caltech programs as well as by a contract with NASA. S.G. was supported by the Centre National d'Etudes Spatiales (CNES). This research used the ALICE High Performance Computing Facility at the University of Leicester. We are extremely grateful to S. Guerlet, V. Hue, A.J. Friedson, T. Greathouse and J.I. Moses for sharing the outputs of their Saturn simulations.

Author contributions

L.N.F. wrote the manuscript and performed the analysis. G.S.O., J.A.S., S.G. and A.A. participated in the data analysis; P.L.R., R.K.A. and F.M.F. aided in dynamical interpretations; P.G.J.I. and S.B.C. developed the software for spectral modelling; G.L.B., J.H., B.E.H. and M.S. designed and implemented the CIRS observations; N.G. and A.M. developed the calibration software. All of the authors discussed the results and commented on the manuscript.


Additional information

Supplementary Information accompanies this paper at <https://doi.org/10.1038/s41467-018-06017-3>.

Competing interests: The authors declare no competing interests.

Reprints and permission information is available online at <http://npg.nature.com/reprintsandpermissions/>

Publisher's note: Springer Nature remains neutral with regard to jurisdictional claims in published maps and institutional affiliations.

 **Open Access** This article is licensed under a Creative Commons Attribution 4.0 International License, which permits use, sharing, adaptation, distribution and reproduction in any medium or format, as long as you give appropriate credit to the original author(s) and the source, provide a link to the Creative Commons license, and indicate if changes were made. The images or other third party material in this article are included in the article's Creative Commons license, unless indicated otherwise in a credit line to the material. If material is not included in the article's Creative Commons license and your intended use is not permitted by statutory regulation or exceeds the permitted use, you will need to obtain permission directly from the copyright holder. To view a copy of this license, visit <http://creativecommons.org/licenses/by/4.0/>.

© The Author(s) 2018