



**HAL**  
open science

## Whole exome sequencing identifies a new mutation in the SLC19A2 gene leading to thiamine-responsive megaloblastic anemia in an Egyptian family

Khalda Amr, Patrycja Pawlikowska, Said Aoufouchi, Filippo L Rosselli,  
Ghada El-kamah

### ► To cite this version:

Khalda Amr, Patrycja Pawlikowska, Said Aoufouchi, Filippo L Rosselli, Ghada El-kamah. Whole exome sequencing identifies a new mutation in the SLC19A2 gene leading to thiamine-responsive megaloblastic anemia in an Egyptian family. *Molecular Genetics & Genomic Medicine*, 2019, 7 (7), pp.e777. 10.1002/mgg3.777. hal-02391876

**HAL Id: hal-02391876**

**<https://hal.science/hal-02391876>**

Submitted on 8 Apr 2024

**HAL** is a multi-disciplinary open access archive for the deposit and dissemination of scientific research documents, whether they are published or not. The documents may come from teaching and research institutions in France or abroad, or from public or private research centers.

L'archive ouverte pluridisciplinaire **HAL**, est destinée au dépôt et à la diffusion de documents scientifiques de niveau recherche, publiés ou non, émanant des établissements d'enseignement et de recherche français ou étrangers, des laboratoires publics ou privés.

## ORIGINAL ARTICLE

# Whole exome sequencing identifies a new mutation in the *SLC19A2* gene leading to thiamine-responsive megaloblastic anemia in an Egyptian family

Khalda Amr<sup>1</sup> | Patrycja Pawlikowska<sup>2,3,4</sup> | Said Aoufouchi<sup>2,3,4</sup>  | Filippo Rosselli<sup>2,3,4</sup>  | Ghada El-Kamah<sup>1</sup> 

<sup>1</sup>Human Genetics and Genome Research Division, National Research Centre, Cairo, Egypt

<sup>2</sup>UMR8200-CNRS, Gustave Roussy, Villejuif Cedex, France

<sup>3</sup>Université Paris-Sud, Université Paris-Saclay, Orsay, France

<sup>4</sup>Equipe labellisée "La Ligue Contre le Cancer", Villejuif Cedex, France

## Correspondence

Ghada El-Kamah, Hereditary Blood Disorders and Genodermatoses Clinics and Research Teams, Human Genetics and Genome Research Division, National Research Centre, Cairo, Egypt.  
Email: ghadaelkamah@hotmail.com

Filippo Rosselli, UMR8200-CNRS, Gustave Roussy, Villejuif Cedex, Université Paris-Sud, Université Paris-Saclay, Orsay, France.  
Email: filippo.rosselli@gustaveroussy.fr

## Funding information

Science and Technology Development Fund, Grant/Award Number: 5253; La ligue Contre la cancer

## Abstract

**Background:** The Solute Carrier Family 19 Member 2 (*SLC19A2*, OMIM \*603941) encodes the thiamine transporter 1 (THTR-1) that brings thiamine (Vitamin B1) into cells. THTR-1 is the only thiamine transporter expressed in bone marrow, cochlear, and pancreatic beta cells. THTR-1 loss-of-function leads to the rare recessive genetic disease Thiamine-Responsive Megaloblastic Anemia (TRMA, OMIM #249270).

**Methods:** In vitro stimulated blood lymphocytes were used for cytogenetics and the isolation of genomic DNA used to perform whole exome sequencing (WES). To validate identified mutations, direct Sanger sequencing was performed following PCR amplification.

**Results:** A 6-year-old male born from a consanguineous couple presenting bone marrow failure and microcephaly was referred to our clinic for disease diagnosis. The patient presented a normal karyotype and no chromosomal fragility in response to DNA damage. WES analysis led to the identification of a new pathogenic variant in the *SLC19A2* gene (c.596C>G, pSer199Ter) allowing to identify the young boy as a TRMA patient.

**Conclusion:** Our analysis extend the number of inactivating mutations in *SLC19A2* leading to TRMA that could guide future prenatal diagnosis for the family and follow-up for patients.

## KEYWORDS

bone marrow failure, deafness, diabetes, *SLC19A2*, thiamine-responsive megaloblastic anemia, THTR-1

## 1 | INTRODUCTION

The association of megaloblastic anemia, diabetes mellitus, and sensorineural deafness is recognized as a rare recessive genetic disease named Thiamine-Responsive Megaloblastic Anemia (TRMA, OMIM #249270) also called thiamine metabolism dysfunction syndrome-1 (THMD1) or Roger's syndrome (Porter, Rogers, & Sidbury, 1969). The responsible gene, *SLC19A2* (OMIM: \*603941, HGNC ID: 10938;

NM\_006996.2) is composed of six exons, spanning 22.5 kb on the chromosome 1q and codes for the high-affinity thiamine transporter protein THTR-1 and was identified in 1999 (Diaz, Banikazemi, Oishi, Desnick, & Gelb, 1999; Fleming et al., 1999; Labay et al., 1999). Long of 497aa, the encoded *SLC19A2* protein, THTR-1 (Uniprot/Swissprot: O60779) possesses 12 putative transmembrane domains and is the sole thiamine transporter expressed in bone marrow, in a subset of cochlear cells and in pancreatic beta cells, explaining the clinical triad

This is an open access article under the terms of the Creative Commons Attribution License, which permits use, distribution and reproduction in any medium, provided the original work is properly cited.

© 2019 CNRS. *Molecular Genetics & Genomic Medicine* published by Wiley Periodicals, Inc.

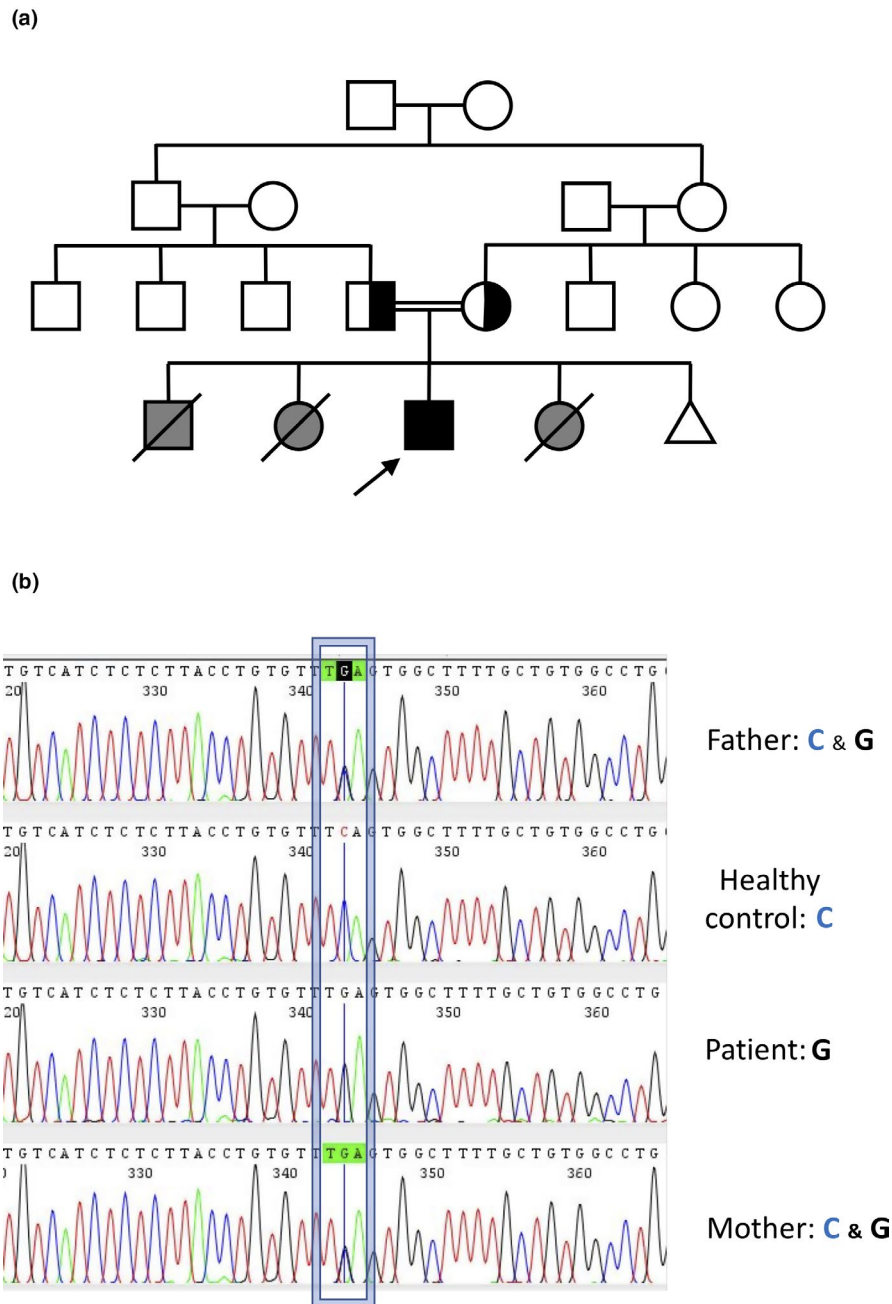
that defines TRMA (Diaz et al., 1999; Fleming et al., 1999; Labay et al., 1999). However, TRMA patients could also present several other clinical abnormalities, including thrombocytopenia, pancytopenia, myelodysplasia, cone-rod dystrophy, optic atrophy, retinal degeneration, ataxia, hepatomegaly, atrial septal defect, and stroke that make difficult diagnosis and genotype phenotype correlation analysis (Shaw-Smith et al., 2012). This variability could be associated with differences in residual activities of some mutants, to environmental clues and/or coinherance with mutations in other genes. Indeed, less than

100 families associated with around 60 *SLC19A2* variants have been described.

## 2 | METHODS

### 2.1 | Ethical compliance

This study obtained the approbation of a genetic study by the Ethics Committee of the National Research Center of Cairo and the written informed consent of the parents.



**FIGURE 1** (a) pedigree of the index patient showing a typical autosomal recessive pattern of inheritance. Since siblings were already died at the time of our proband analysis, TRMA is proposed only on the basis of their clinical characteristics. (b) Sequences showing the novel point mutation identified in the exon 2 of *SLC19A2* (OMIM: \*603941, HGNC ID: 10938; NM\_006996.2)

## 2.2 | Lymphocytes culture and DNA analysis

Blood samples were obtained from patient and parents and lymphocytes cultures were established following standard protocol and used for cytogenetics analysis. Whole exome sequencing (WES) on genomic DNA isolated from blood samples were performed following a standard protocol. Direct Sanger sequencing of the *SLC19A2* gene (OMIM: \*603941, HGNC ID: 10938; NM\_006996.2) was performed using standard methods following PCR amplification with the following primers: *SLC19A2* - Rev 5'-AGGCTGAGCTTACCGGTTTC-3'; *SLC19A2* - 5'-CCAGTATGGACTTACTCTTACCTGG-3'.

## 3 | RESULTS

A 6-year-old boy presenting with bone marrow failure (BMF) and microcephaly (-3,6), hearing and language impairment, as well as intellectual disability (SQ 57 by Vineland social maturity scale) was admitted at the Hereditary Blood Disorders Clinic, Human Genetics and Genome Research Division of the National Research Centre, Cairo, Egypt. The patient is born in a consanguineous family, marriage between first cousins, and was preceded by two infants and followed by one. The first sibling died at the age of 6 months from severe ear infection, the second had diabetes and BMF and died at age of 2 years, the last sib, died at the age of 9 months, was also diagnosed as diabetic at the age of 7 months and presented an anemic status. A fifth pregnancy did not come to its end (Figure 1a).

Initial suspicion of Fanconi anemia, the most frequent inherited bone marrow failure syndrome associated with mutations in more than 20 genes (Gueiderikh, Rosselli, & Neto, 2017), was rejected on the basis of the analysis of the chromosomal sensitivity to the exposure to DNA interstrands crosslinking inducing agent Dyeoxybutane (data not shown).

Considering the consanguinity of the family and the health problems of the siblings, a disorder inherited as an autosomal recessive trait was suspected. Thus, taking into account the variability of the phenotype and the little information on the metabolism of the patient we have, we chosen a holistic approach rather than a gene panel or a candidate gene approach to identify the gene-coding protein which loss-of-function was responsible for the disease. Whole exome sequencing (WES) was performed on genomic DNA isolated from blood samples obtained from the parents and the patient. After filtering to exclude known nonpathogenic SNPs, eliminating "silent" variations (synonymous SNV, nonframeshift insertion, nonframeshift deletion) and SNPs present in the 1000G and AvSNP150 data bases, around 15,000 variants were identified in each individual. Among the variants presenting

an allelic frequency (VAF) >25% and <75% in the parents, only two, the c. 596C>G in the exon 2 of the *SLC19A2* gene and the c.3438T>G in the exon 26 of the *VWF* gene, were scored as «likely pathogenics». Both genomic variants lead to a stop codon in the mRNA. Of the two variants, only the *SLC19A2* c.596C>G presented a VAF of 100, that is homozygosity, in the patient. Mutation was validated by Sanger analysis (Figure 1b). The identified C to G transversion leads to a codon stop that truncates the THTR-1 receptor at Ser199 (Ser199Ter) in the middle of the sixth transmembrane domain of the protein.

## 4 | DISCUSSION

Taken into account the clinical features and the identified mutated gene, we conclude that the patient is affected by TRMA. The identified mutation was not previously described. The identification of the inactivating mutation in the family will allow prenatal diagnosis for future pregnancy in the family and for follow-up and treatment of eventual new siblings. Indeed, lifelong oral treatment with thiamine at pharmacological doses (25-100 mg/day) reverse anemia and delay diabetes, and, when started during the first years of life, prevent hearing defects.

Our patient is the second Egyptian with a pathogenic mutation in the *SLC19A2* gene. The first one was identified by direct sequencing of known genes involved in diabetes (Habebe et al., 2018). As for our proband, the first Egyptian patient identified in the study of Habebe and collaborators was from consanguineous parents. He/she presented in addition to diabetes, deafness, anemia, thrombocytopenia, mild leukopenia, and atrial septal defect. He/she presented a previously unknown homozygous mutation in the fourth exon of the *SLC19A2* gene that leads to a stop codon (p.Trp387Ter) resulting in a protein truncated at the beginning of the ninth transmembrane domain.

Thus, it seems that *SLC19A2* inactivating mutations are diffused in the Egyptian genetic background and are different from those already retrieved worldwide. On the previous basis it appears interesting to propose the inclusion of the *SLC19A2* gene in the panels of candidate genes used for the diagnosis of complex diseases associating bone marrow failure, diabetes and hearing loss and, possibly, developmental anomalies of heart and bones (microcephaly).

## ACKNOWLEDGMENTS

The authors thank the family for their participation in this study. This work was supported by grants from GEFLUC Ile-de-France to P.P. and La Ligue Contre Le Cancer to F.R. and STDF Grants for Centers of Scientific Excellence: Center of Excellence for Human Genetics, No. 5253.

## DISCLOSURE

The authors have no conflict of interest to declare.

## ORCID

Said Aoufouchi  <https://orcid.org/0000-0001-6547-2664>

Filippo Rosselli  <https://orcid.org/0000-0003-1080-5745>

Ghada El-Kamah  <https://orcid.org/0000-0002-7739-1674>

## REFERENCES

- Diaz, G. A., Banikazemi, M., Oishi, K., Desnick, R. J., & Gelb, B. D. (1999). Mutations in a new gene encoding a thiamine transporter cause thiamine-responsive megaloblastic anaemia syndrome. *Nature Genetics*, 22(3), 309–312. <https://doi.org/10.1038/10385>
- Fleming, J. C., Tartaglino, E., Steinkamp, M. P., Schorderet, D. F., Cohen, N., & Neufeld, E. J. (1999). The gene mutated in thiamine-responsive anaemia with diabetes and deafness (TRMA) encodes a functional thiamine transporter. *Nature Genetics*, 22(3), 305–308. <https://doi.org/10.1038/10379>
- Gueiderikh, A., Rosselli, F., & Neto, J. B. C. (2017). A never-ending story: the steadily growing family of the FA and FA-like genes. *Genetics and Molecular Biology*, 40(2), 398–407. <https://doi.org/10.1590/1678-4685-gmb-2016-0213>
- Habeb, A. M., Flanagan, S. E., Zulali, M. A., Abdullah, M. A., Pomahačová, R., Boyadzhiev, V., ... De Franco, E. (2018). Pharmacogenomics in diabetes: outcomes of thiamine therapy in TRMA syndrome. *Diabetologia*, 61(5), 1027–1036. <https://doi.org/10.1007/s00125-018-4554-x>
- Labay, V., Raz, T., Baron, D., Mandel, H., Williams, H., Barrett, T., ... Cohen, N. (1999). Mutations in SLC19A2 cause thiamine-responsive megaloblastic anaemia associated with diabetes mellitus and deafness. *Nature Genetics*, 22(3), 300–304. <https://doi.org/10.1038/10372>
- Porter, F. S., Rogers, L. E., & Sidbury, J. B. Jr (1969). Thiamine-responsive megaloblastic anemia. *Journal of Pediatrics*, 74, 494–504. [https://doi.org/10.1016/S0022-3476\(69\)80031-4](https://doi.org/10.1016/S0022-3476(69)80031-4)
- Shaw-Smith, C., Flanagan, S. E., Patch, A. M., Grulich-Henn, J., Habeb, A. M., Hussain, K., ... Ellard, S. (2012). Recessive SLC19A2 mutations are a cause of neonatal diabetes mellitus in thiamine-responsive megaloblastic anaemia. *Pediatrics Diabetes*, 13, 314–321. <https://doi.org/10.1111/j.1399-5448.2012.00855.x>

**How to cite this article:** Amr K, Pawlikowska P, Aoufouchi S, Rosselli F, El-Kamah G. Whole exome sequencing identifies a new mutation in the *SLC19A2* gene leading to thiamine-responsive megaloblastic anemia in an Egyptian family. *Mol Genet Genomic Med*. 2019;7:e777. <https://doi.org/10.1002/mgg3.777>