



HAL
open science

Conformational landscape of the SF₆ dimer as revealed by various free jet conditions

M. Gaveau, M. Mons, Laurent Bruel, A. Potapov, A. Turner, V. Boudon, P.
Asselin

► **To cite this version:**

M. Gaveau, M. Mons, Laurent Bruel, A. Potapov, A. Turner, et al.. Conformational landscape of the SF₆ dimer as revealed by various free jet conditions. AIP Conference Proceedings, 2019, pp.030004. 10.1063/1.5119529 . hal-02390696

HAL Id: hal-02390696

<https://hal.science/hal-02390696>

Submitted on 3 Dec 2020

HAL is a multi-disciplinary open access archive for the deposit and dissemination of scientific research documents, whether they are published or not. The documents may come from teaching and research institutions in France or abroad, or from public or private research centers.

L'archive ouverte pluridisciplinaire **HAL**, est destinée au dépôt et à la diffusion de documents scientifiques de niveau recherche, publiés ou non, émanant des établissements d'enseignement et de recherche français ou étrangers, des laboratoires publics ou privés.

Conformational Landscape of the SF₆ Dimer as Revealed by Various Free Jet Conditions

M.A. Gaveau^{1, a)}, M. Mons^{1, b)}, L. Bruel^{2, c)}, A. Potapov^{3, d)}, A.C. Turner^{4, e)},
V. Boudon^{5, f)} and P. Asselin^{6,7 g)}

¹ LIDYL, CEA, CNRS, Université Paris-Saclay, CEA Saclay, 91191 Gif-sur-Yvette, France

² CEA Marcoule, DEN, Bagnols-sur-Cèze, France

³ Laboratory Astrophysics Group of the Max Planck Institute for Astronomy at the Friedrich Schiller University
Jena, Germany

⁴ Department of Earth and Planetary Science, University of California, Berkeley, California 94720 USA.

⁵ Laboratoire Interdisciplinaire Carnot de Bourgogne, UMR 6303 CNRS Université
Bourgogne Franche-Comté, 9 Av. A. Savary, BP 47870, F-21078 Dijon, France

⁶ Sorbonne Universités, UPMC Univ. Paris 06, UMR 8233, MONARIS, F-75005, Paris, France.

⁷ CNRS, UMR 8233, MONARIS, F-75005, Paris, France

^{a)}Corresponding author: marc-andre.gaveau@cea.fr

^{b)} michel.mons@cea.fr

^{c)} laurent.brueel@cea.fr

^{d)} alexey.potapov@uni-jena.de

^{e)} acturner@berkeley.edu

^{f)} vincent.boudon@u-bourgogne.fr

^{g)} pierre.asselin@upmc.fr

Abstract. The experiment SPIRALES coupling a tunable infrared laser to a pulsed supersonic free jet has allowed us to reinvestigate the high-resolution absorption spectroscopy of the SF₆ dimer in the ν_3 mode region under various experimental conditions. In addition to the SF₆ dimer spectrum so far reported, we demonstrate the existence of two new spectral features: i) one assigned to a second conformer of this species, characterized by a larger interatomic distance as well as ii) a complex (SF₆)₂-He.

INTRODUCTION

Supersonic free jets are an ideal way to form and study van der Waals complexes [1], through the very fast cooling and rarefaction of the gas during the expansion leading to the stabilization of these isolated species. Of course, the formation of these complexes depends dramatically on the expansion conditions, i.e. the nozzle geometry, the nature of the gas mixture and the stagnation conditions (P_0 , T_0). Taking advantage of this sensitivity, we have used a series of different expansion conditions to explore the potential energy landscape of the SF₆ dimer with high resolution spectroscopy.

Low resolution spectra of the SF₆ dimer were first studied by photodissociation spectroscopy in the groups of Reuss [2] and coworkers and of Scoles *et al.* [3]. They used line-tunable cw CO₂ or N₂O lasers to excite the dimers: In the first group, they monitored the depletion of the dimer while in the latter one they measured the dissociation fragments ejected off the beam axis. The absorption spectra of the dimer were not rotationally resolved and featured two broad bands respectively blue-shifted and red-shifted from the monomer band at 948 cm⁻¹.

The first high resolution absorption spectrum of the SF₆ dimer was obtained by Urban and Takami in a jet-cooled IR diode laser spectroscopy study [4]. The rotationally resolved spectrum was recorded in an axisymmetric free jet of 5% SF₆ in helium and stagnation pressure 7-8 bars at a distance of 20 mm from the nozzle (diameter $D = 0.5$ mm) with a rotational temperature of 1 K. In the SF₆ dimer, the triply degenerate ν_3 band of the monomer splits into two bands, the parallel and perpendicular bands respectively, centered at 934.01 and 956.10 cm⁻¹. A single conformer of

(SF₆)₂ was observed. The rovibrational analysis of the // band allowed to determine $\nu_{//}$, the rotational constants B'' and B' and a vibrationally averaged S-S distance equal to 475.4 pm. Only one perpendicular band was observed and found to be consistent with a D_{2d} structure of the SF₆ dimer. This was in agreement with the work of van Bladel *et al.* who predicted that the most stable (SF₆)₂ had a D_{2d} symmetry in a simple atom-atom potential model [5]. Beu and Takeuchi used a more sophisticated intermolecular potential and obtained similar conclusions [6]. However, a second predicted structure of C_{2h} symmetry was not observed experimentally by Urban and Takami.

The high resolution absorption spectrum of small SF₆ clusters embedded in helium clusters has also been observed in the 10 micron region [7]. It displays a partially rotationally resolved structure at the very low temperature (0.37 K) of the helium clusters. The perturbation due to the helium environment is weak and the shift of the solvated dimer bands with respect to those of the free dimer is expected to remain small. However, even if the rotation of the small SF₆ clusters is nearly free in the helium droplet, the proximity of helium atoms leads to an increase of the moments of inertia, and therefore to a decrease of the rotational constants, which prevents determining structural information about the free dimer.

More recently, 2 or 3 conformers of the SF₆ dimer have been predicted to be nearly isoenergetic within 0.5 kJ/mole by quantum chemistry calculations [8].

As only one conformer had been detected experimentally, the spectrum of the SF₆ dimer has been reinvestigated at high resolution in the 10.5 micron region thanks to the SPIRALES setup [9].

EXPERIMENTAL SETUP

The SPIRALES experimental setup couples a tunable infrared laser and a pulsed supersonic free jet through multipass optics in order to record the absorption spectrum of rotationally cold species and weakly bound complexes that can be formed in the jet [10] [9]. The light source is a continuous wave external cavity quantum cascade laser (EC-QCL) with a spectral width of 10 MHz. It covers the 930-990 cm⁻¹ range and its power is about 120 mW around 950 cm⁻¹. It can be scanned on a frequency range of 0.8 cm⁻¹ at a repetition rate of 100 Hz allowing data acquisition with a very good detectivity. 8% of the laser light is sent through two laser channels for relative and absolute frequency calibration with an accuracy around 0.0001 cm⁻¹. The remaining light is sent through an astigmatic optical cavity aligned according to a 182-pass configuration mounted in the jet chamber (Fig. 1). The light intensity transmitted through the jet is measured by an HgCdTe detector in order to record the absorption spectrum.

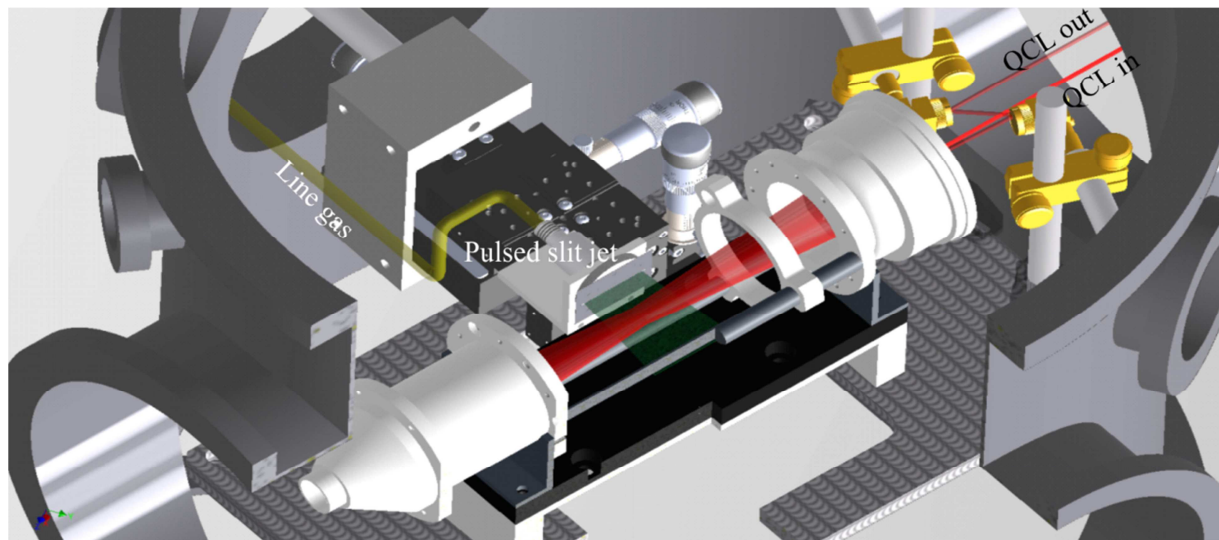


FIGURE 1. Scheme of the multipass cell mounted in the jet chamber

The SF₆ clusters were generated in pulsed supersonic expansions of He/SF₆ or He/SF₆/Rg mixtures. The gas mixtures were prepared in a 10 l tank fitted to the gas lines. Their compositions were determined by the ratio of the partial pressures of different gases forming the mixture. In order to reinvestigate the conformational landscape of (SF₆)₂, it was necessary to change the conditions of formation and stabilization of these clusters, and therefore the conditions of the expansion. This was achieved in three different ways:

- The supersonic free jet was generated from a pulsed nozzle (General Valve) with different geometries, either a 0.35 mm circular nozzle or a slit nozzle (30 mm length \times $l=50$ μ m width). A good balance between efficient rovibrational cooling and high molecular density was found even at longer distances up to $z = 18$ mm for slit jet expansions ($T_R = 3$ K) and at shortest distances ($z = 12$ mm) for pin hole jet expansions ($T_R = 0.8$ K).
- The SF₆ dilution was varied from 0.25 to 4 % in He and also in ternary mixtures He/Rg/SF₆.
- The stagnation pressure was varied up to 10 bars.

For all the experiments, the reservoir and the nozzle were at room temperature. The stagnation pressure was measured by two sensors connected to the gas lines: a Baratron capacitance manometer for the pressure ranges up to 1 bar (precision: 0.1 mbar), and a transducer based on a piezo-resistive ceramic (precision: 0.1 bar) for the pressures between 1 and 10 bar. The absorption spectra have also been recorded at different distances from the nozzle between $z = 9$ and 18 mm, in order to probe different regions of the expansion. However, the region probed with the multipass cavity is relatively broad (about 10 mm) and corresponds to a large range of reduced distances z/D (z/l).

EXPERIMENTAL RESULTS

Slit Nozzle: Evolution of the Parallel Band Region of (SF₆)₂ with the SF₆ Concentration and Evidence for Three Different Features in He-SF₆ Expansions

We started our study by investigating the parallel band region of (SF₆)₂ (933-935 cm⁻¹) in order to detect other spectroscopic signatures than the band detected by Urban and Takami [4]. Figure 2 presents the evolution of the parallel band region of the SF₆ dimer as a function of the SF₆ concentration (from 0.25 % for (a) to 4 % for (e)) in He for the slit expansion. The backing pressure is 6 bars, the distance from the nozzle 9 mm.

The experimental linewidth (100 MHz) is rather large for a planar expansion. If the slit nozzle was perfect, at the distance $z = 9$ mm ($z/l = 180$), the translational temperature would be equal to about 17 K, corresponding to a Doppler width of only 7 MHz at 934 cm⁻¹ for SF₆ (142 amu). But our slit has a finite length and is fixed to the front valve very close to the circular hole exit to limit the size of the buffer volume. As a consequence, the gas is not very well distributed over all the length of the slit and an expansion not quite planar is expected. In this case, residual Doppler broadenings take place, particularly important when using helium as a carrier gas: It is due to the fact that a streamline can be at an angle θ to the jet axis, and therefore $\pi/2 - \theta$ to the laser direction. This has the effect of inducing a Doppler shift $\Delta\nu = v_0 U \sin(\theta)/c$ for the transitions at frequency ν_0 of a SF₆ molecule flowing at speed U along this streamline. SF₆ is seeded in helium, the speed of which is about 1700 m/s at $z = 9$ mm. Of course U is smaller than this value due to the velocity slip. If we take $U = 1200$ m/s then $\Delta\nu = 32$ MHz for $\theta = 20^\circ$, and 47 MHz for $\theta = 30^\circ$. The distribution of molecules along diverging streamlines can therefore explain the observed linewidths which nevertheless remain much smaller than in the case of axisymmetric expansions [11].

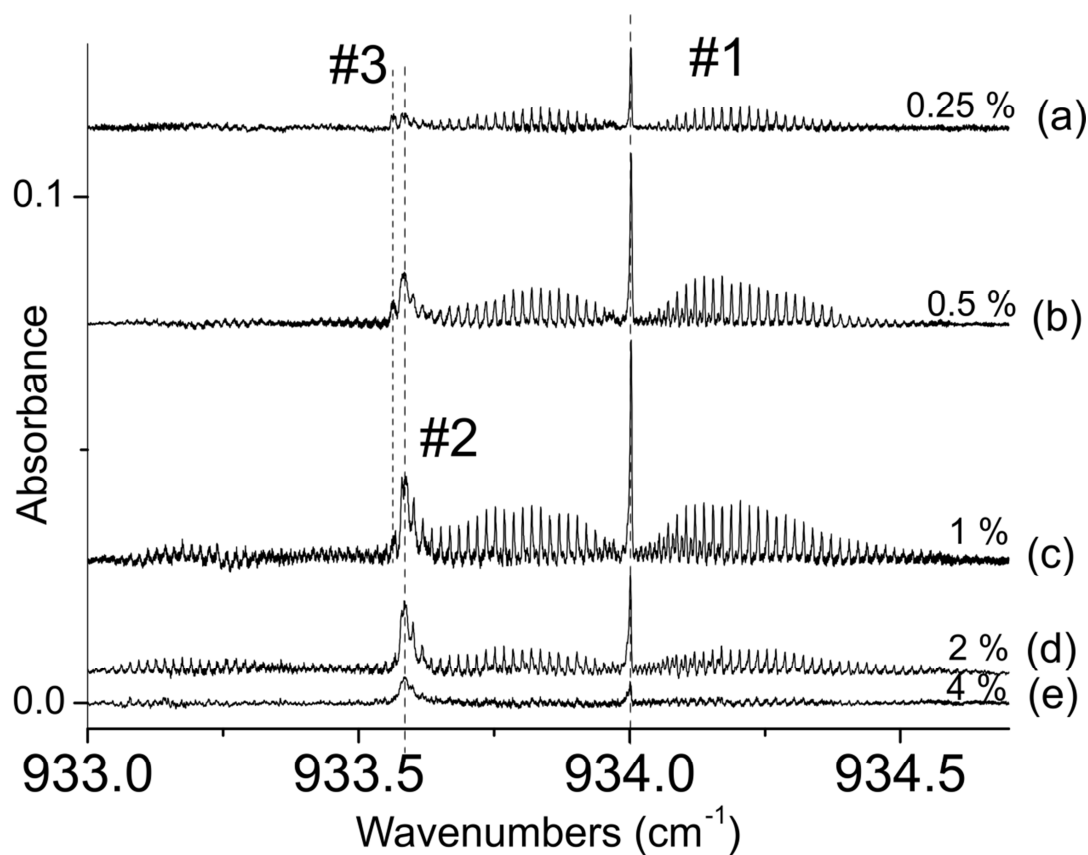


FIGURE 2. EC-QCL absorption spectra of the parallel band of SF₆ dimer at various concentrations: (a) 0.25%, (b) 0.5%, (c) 1%, (d) 2%, (e) 4% of SF₆ diluted in helium. The stagnation pressure is 6 bars and the axial distance from the nozzle 9 mm. Reproduced from *Phys. Chem. Chem. Phys.* **19** (26), 17224 (2017) with permission from the PCCP Owner Societies.

The band denoted #1 is in agreement with the high resolution spectrum of Urban and Takami [4]: It is composed of a ${}^oQ(J,K)$ branch peaking at 934 cm^{-1} as well as well J-resolved ${}^oP(J,K)$ and ${}^oR(J,K)$ branches. The experimental linewidth (100 MHz) does not allow resolving the K substructure. On the red side of band #1, another feature is observed (noted #2 hereafter) at 933.58 cm^{-1} . This new spectral feature that was not detected previously presents well identified P, Q and R branches. The intensities of #1 and #2 begin to increase with the SF₆ concentration before dropping significantly above 1%. However, the ratio #2 / #1 increases continuously as the SF₆/He ratio is increased: It suggests that the formation of #2 is favored with respect to that of #1 in these expansion conditions, *i.e.* with more collisions between SF₆ molecules and a slightly higher translational and rotational temperature. One can notice also the presence of a small satellite band (noted #3) on the red side of the feature #2 at small concentration of SF₆.

Parallel Band Region of (SF₆)₂: Comparison between Slit and Circular Nozzle Spectra

The absorption spectrum has also been obtained with the circular nozzle free jet: It also shows the 3 spectral features detected with the slit nozzle but with very different intensities. Figure 3 presents a comparison of spectra recorded in the axisymmetric and slit expansion, with a stagnation pressure of 6 bars.

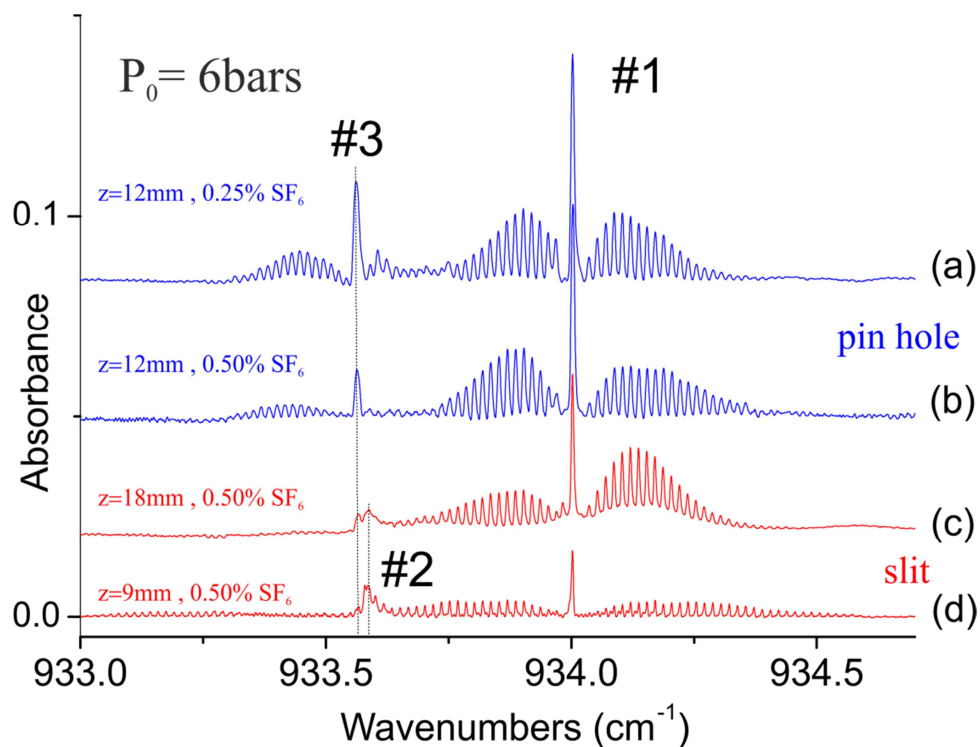


FIGURE 3. Comparison of spectra of the parallel band region of $(\text{SF}_6)_2$ obtained in the pinhole expansion (in blue) and in the slit expansion (in red) with a stagnation pressure of 6 bars, at low concentration of SF_6 and various distances from the nozzle exit: (a) pin hole nozzle at $z = 12$ mm with 0.25% SF_6 ; (b) pin hole, $z = 12$ mm, 0.5% SF_6 ; (c) slit nozzle, $z = 18$ mm, 0.5% SF_6 and (d) slit nozzle, $z = 9$ mm, 0.5% SF_6 . Reproduced from *Phys. Chem. Chem. Phys.* **19** (26), 17224 (2017) with permission from the PCCP Owner Societies.

Figure 3 shows that the feature #3 becomes intense in the circular nozzle free jet and at low concentrations of SF_6 . This band, not previously detected, is located at 933.56 cm^{-1} and presents P, Q and R branches clearly visible in this case (Fig. 3a and b). On the contrary, the intensity of the feature #3 becomes much smaller in the slit nozzle expansion, even if it increases a little bit at larger distances from the nozzle exit (Fig. 3c). So, depending on the experimental conditions, the new spectral features (#2 and #3) can reach intensities that are comparable to that of the dimer feature #1. However, it seems that #2 and #3 are not favoured by the same expansion conditions: #3 appears mainly at low SF_6 concentrations and low temperature expansion (circular nozzle), whereas #2 is more intense at higher SF_6 concentrations and higher temperature (slit expansion). Moreover, these features are very close (933.58 cm^{-1} and 933.56 cm^{-1} for #2 and #3 respectively) and #2 and #3 have to be assigned while taking into account these puzzling properties.

Rovibrational Band Contour Analysis and Assignments

The conformer #1 is similar to $(\text{SF}_6)_2$ previously observed by Urban and Takami [4]. The corresponding experimental spectra of the parallel and perpendicular bands are presented in red on Fig. 4. The simulated spectra are plotted in blue assuming a D_{2d} structure and a rotational temperature of 3 K. It allows to determine the rovibrational constants and the distance S-S equal to 474.2 pm in agreement with that previously (475 pm) measured. The rotational temperature of 3 K is fully consistent with the translational temperature (3.1 K) that can be calculated in a slit expansion at $z/l = 180$ for this mixture from the formula of H. Murphy [12] [13], if we neglect the energy release due to nucleation.

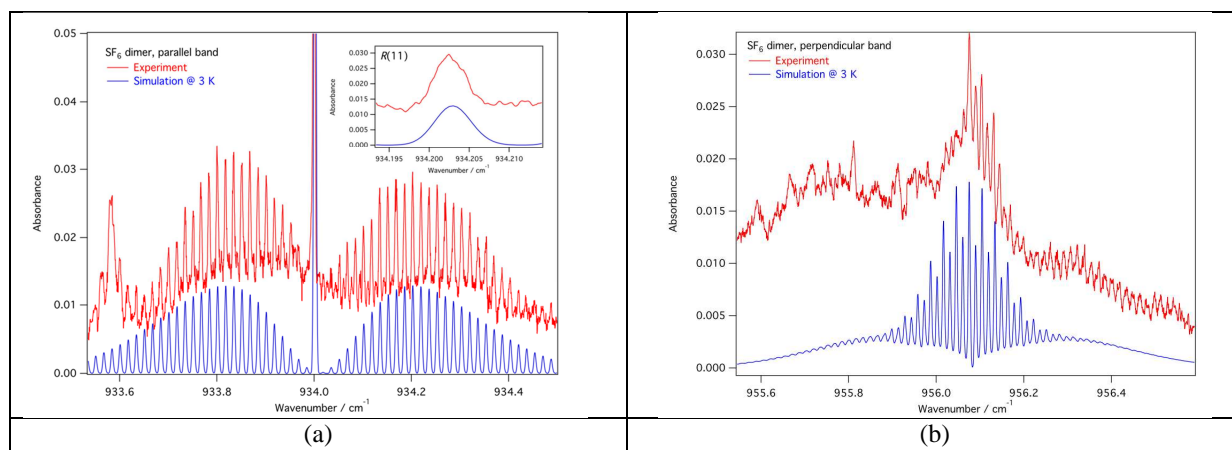


FIGURE 4. Conformer #1: Experimental spectra (in red) of the parallel (a) and perpendicular bands (b) compared to the corresponding simulated spectra in blue. The parallel and perpendicular bands of $(\text{SF}_6)_2$ have been recorded with 0.5% SF_6 seeded in 6 bar He at $z = 9$ mm using a slit nozzle.

We have then to assign bands #2 and #3 knowing that they have maximal intensities for different experimental conditions and that the two features are very close in frequency. Several possibilities have to be considered for these assignments: Another conformer of the SF_6 dimer, the SF_6 trimer or larger multimer, or a complex with He as $(\text{SF}_6)_2\text{-He}$. Actually, the simulation shows that #2 corresponds to a new conformer of the SF_6 dimer: Figure 5 presents the comparison of the experimental spectrum recorded at $z = 9$ mm in a slit nozzle expansion of 0.5% SF_6 in He ($P_0 = 6$ bars), with a simulation spectrum. The latter is the sum of the simulation spectrum of the $(\text{SF}_6)_2$ conformer #1 with a symmetry D_{2d} and a rotational temperature of 3 K, and the simulation spectrum of the $(\text{SF}_6)_2$ conformer #2 with a symmetry C_{2h} and a rotational temperature of 8 K. The distance S-S in this second conformer is equal to 480.1 pm. It is interesting to note that the two rotational temperatures (3 and 8 K) used in the simulations are substantially different: Presumably because, with the multipass cell, the laser beam is able to probe several conformers present in different regions of the jet.

Concerning the band #3, despite the contour features P, Q, R branches, some details of the contour, especially on the R branch side, could not be properly reproduced by a simulated symmetric top transition, suggesting that the species responsible could not be a symmetric top. The rotational constants derived being nevertheless very similar to bands 1 and 2, but inconsistent with a homotrimer molecule, we are left with an assignment to a $(\text{SF}_6)_2\text{-He}$ trimer. This is consistent with the fact that the presence of the He atom is not expected to strongly affect the SF_6 dimer features: Neither the rotational constants, nor the vibrational spectral shift (-0.02 cm^{-1}). A further support to this assignment has been found in complementary experiments which were performed by recording spectra at $z = 9$ mm in slit nozzle expansions of ternary mixture 0.5% $\text{SF}_6/\text{Rg}/\text{He}$ and $\text{Rg} = \text{He, Ne, Ar, Kr, Xe}$. Except for pure helium spectra, a SF_6/Rg equimolar concentration is used. The backing pressure was $P_0 = 6$ bars. These spectra are shown on Fig.6 (a). Each spectrum presents a specific spectral feature red shifted with respect to #2. The corresponding $^{\text{Q}}$ Q branches are marked by an asterisk. The vibrational shift of these branches with respect to the central frequency of #2 is plotted as a function of the polarizability α of the rare gas Rg: The experimental data can be perfectly fitted by a straight line and this linear dependence suggests that these spectral features are composed of the #2 dimer complexed with a single rare gas atom and similar structures. The fact that the vibrational shift of feature #3 follows this linear dependence, supports its assignment to a helium complex of the #2 dimer. On the contrary, the #1 dimer does not show any additional bands in its vicinity that could be assigned to a complex of the #1 dimer complexed with a rare gas atom. This seems to indicate a specific behavior in terms of complexation.

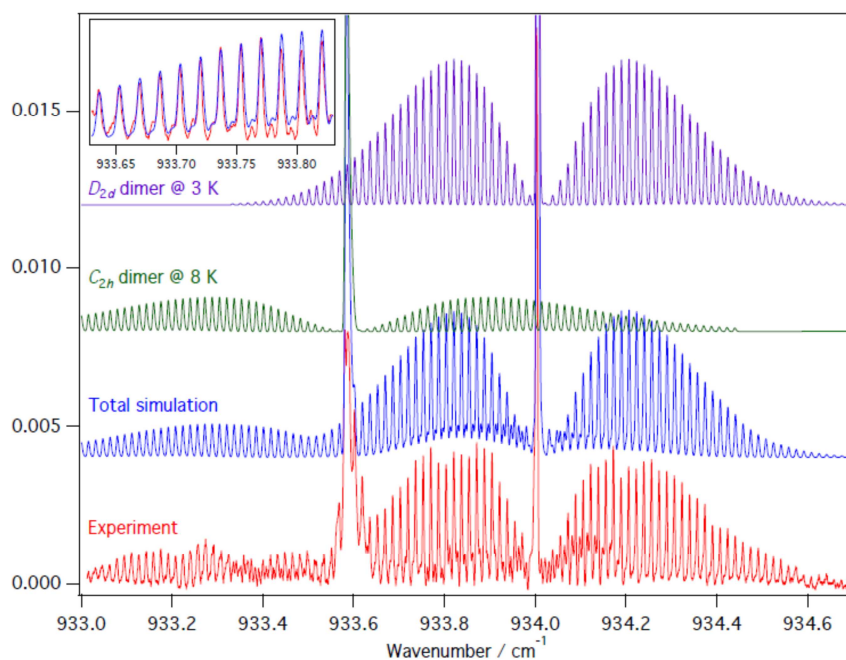


FIGURE 5. Slit nozzle spectrum (bottom in red) of the parallel band of $(\text{SF}_6)_2$ recorded at $z = 9$ mm with 0.5% SF_6 in 6 bar He. It is compared to the total simulation spectrum (in blue) which is the sum of the simulated spectrum of conformer #1 (D_{2d} symmetry, 3 K, in purple) and conformer #2 (C_{2h} symmetry, 8 K, in green). Reproduced from *Phys. Chem. Chem. Phys.* 19 (26), 17224 (2017) with permission from the PCCP Owner Societies.

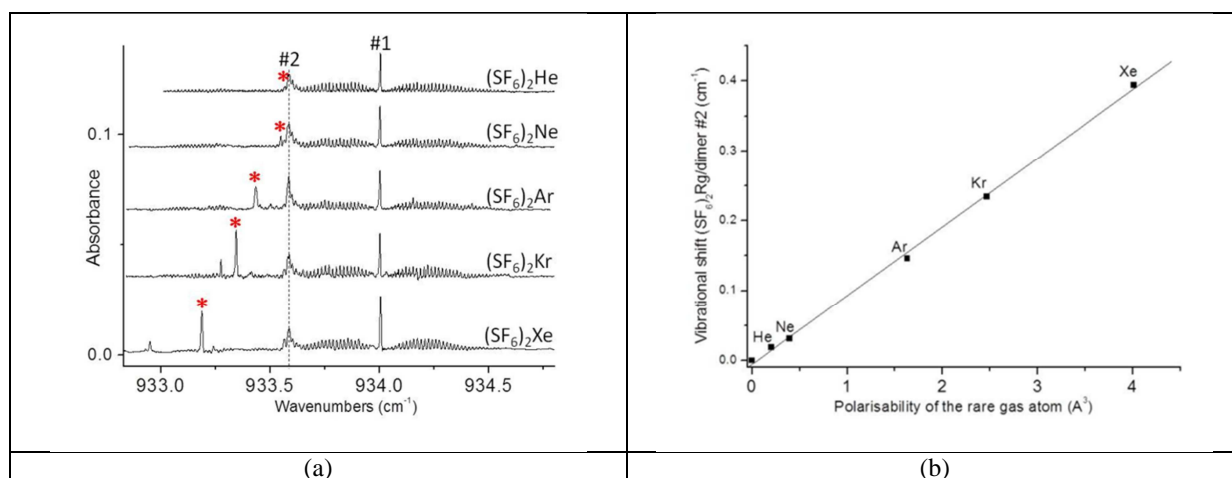


FIGURE 6. (a) Complementary spectra of the parallel band of $(\text{SF}_6)_2$ recorded at $z = 9$ mm in slit nozzle expansions of 0.5% $\text{SF}_6/\text{Rg}/\text{He}$ ($\text{Rg} = \text{He}, \text{Ne}, \text{Ar}, \text{Kr}, \text{Xe}$) with $P_0 = 6$ bars. Except for the pure helium case, $\text{SF}_6/$ and Rg have the same concentration. The ^0Q branches marked by an asterisk are assigned to $(\text{SF}_6)_2\text{-Rg}$ complexes. Their red shift with respect to the Q branch position of conformer #2 is plotted as a function of the rare gas polarizability on panel (b). Reproduced from *Phys. Chem. Chem. Phys.* 19 (26), 17224 (2017) with permission from the PCCP Owner Societies

DISCUSSION AND CONCLUSION

In this experiment, two different conformers #1 and #2 of the SF_6 dimer were observed including one which had not been detected previously. The rovibrational analysis of the parallel band contours of the ν_3 transition allows

determining two distinct S-S distances for these conformers. A complex of He with the conformer #2 was also identified. This was only possible thanks to the versatility of the experimental setup that enables us to vary the free jet conditions, by using either a circular nozzle or a slit nozzle, by changing the SF₆ concentration of the gas mixture with He, by varying P₀ and the distance z from the nozzle exit to the location where the jet was probed or by adding another rare gas to the mixture. Indeed, the dynamics of their formation seems specific to each conformer. In the circular nozzle expansion, at high pressure and low SF₆ concentration, the fast cooling in the early expansion leads to the stabilization of dimer #1 and of the heterotrimer #3 with a low rotational temperature (0.8 K). As the concentration of SF₆ increases, an increased number of SF₆-SF₆ collisions leads to the formation of some population of the conformer #2.

The slit expansion is slower and the collision rates are larger at the same reduced distance (z/l) than in the circular expansion (z/D), which apparently favors the formation of the conformer #2. There is also a conformational relaxation as proved by the decrease of the ratio between populations of #2 and #1 at large z (see Fig.3 c and d). This also indicates a larger stability of #1 and a low energy barrier to interconversion. The larger stability of the conformer #1 is confirmed by its presence in all the experiments where SF₆ dimers are detected. As the concentration of SF₆ increases, the conformer #2 is strongly favored with respect to #1 (Fig. 2) by SF₆-SF₆ collisions and SF₆-dimer collisions suggesting a mode of formation of #2 significantly different from that of #1. Population of #2 is consistent with hot complexes formed in the early stages of the expansion by these collisions. This is also consistent with the two different rotational temperatures measured for the two conformers in the slit expansion.

A third band has been assigned to (SF₆)₂-He trimer on the ground of complementary experiments with SF₆:Rg:He mixtures that has allowed the assignment of all (SF₆)₂-Rg trimers. The hetero trimers are formed from the conformer #2. It also suggests an interconversion between #1 and #2 consistent with the picture of a conformer #2 entropically favored in presence of rare gas collision partners.

ACKNOWLEDGMENTS

AP acknowledges COST ActionCM1401 "Our Astro-Chemical History".

REFERENCES

1. D. H. Levy, *Annu. Rev. Phys. Chem.* **31**, 197-225 (1980).
2. J. Geraedts, S. Setiadi, S. Stolte, and J. Reuss, *Chem. Phys. Lett.* **78**, 277-282 (1981).
3. T. E. Gough, D. G. Knight, P. A. Rowntree, and G. Scoles, *J. Phys. Chem.* **90**, 4026-4032 (1986).
4. R. D. Urban and M. Takami, *J. Chem. Phys.* **103**, 9132-9137 (1995).
5. J. W. I. Vanbladel and A. Vanderavoird, *J. Chem. Phys.* **92**, 2837-2847 (1990).
6. T. A. Beu and K. Takeuchi, *J. Chem. Phys.* **103**, 6394-6413 (1995).
7. M. Hartmann, R. E. Miller, J. P. Toennies, and A. F. Vilesov, *Science* **272**, 1631-1634 (1996).
8. T. Vazhappilly, A. Marjolin, and K. D. Jordan, *Journal of Physical Chemistry B* **120**, 1788-1792 (2016).
9. P. Asselin, A. Potapov, A. C. Turner, V. Boudon, L. Bruel, M. A. Gaveau, and M. Mons, *Phys. Chem. Chem. Phys.* **19**, 17224-17232 (2017).
10. P. Asselin, Y. Berger, T. R. Huet, L. Margules, R. Motiyenko, R. J. Hendricks, M. R. Tarbutt, S. K. Tokunaga, and B. Darquie, *Physical Chemistry Chemical Physics* **19**, 4576-4587 (2017).
11. M. A. Gaveau, D. Boscher, and J. P. Martin, *Chem. Phys. Lett.* **107**, 31-34 (1984).
12. H. R. Murphy, "The effects of source geometry on free jet expansions", Ph.D. Thesis, University of California, 1984.
13. D. R. Miller, "Free jet sources", in *Atomic and Molecular Beam Methods*, edited by G. Scoles (Oxford University Press, New-York, Oxford, 1988), Vol. 1, pp. 14-53.