



HAL
open science

A partitioned two-step solution algorithm for concurrent fluid flow and stress–strain numerical simulation in solidification processes

Shaojie Zhang, Gildas Guillemot, Charles-André Gandin, Michel Bellet

► To cite this version:

Shaojie Zhang, Gildas Guillemot, Charles-André Gandin, Michel Bellet. A partitioned two-step solution algorithm for concurrent fluid flow and stress–strain numerical simulation in solidification processes. *Computer Methods in Applied Mechanics and Engineering*, 2019, 356, pp.294-324. 10.1016/j.cma.2019.07.006 . hal-02377794

HAL Id: hal-02377794

<https://hal.science/hal-02377794v1>

Submitted on 3 Jan 2021

HAL is a multi-disciplinary open access archive for the deposit and dissemination of scientific research documents, whether they are published or not. The documents may come from teaching and research institutions in France or abroad, or from public or private research centers.

L'archive ouverte pluridisciplinaire **HAL**, est destinée au dépôt et à la diffusion de documents scientifiques de niveau recherche, publiés ou non, émanant des établissements d'enseignement et de recherche français ou étrangers, des laboratoires publics ou privés.

A partitioned two-step solution algorithm for concurrent fluid flow and stress-strain numerical simulation in solidification processes

Shaojie Zhang, Gildas Guillemot, Charles-André Gandin and Michel Bellet*

*MINES ParisTech, PSL Research University, CEMEF - Centre de Mise en Forme des Matériaux, CNRS UMR
7635, CS 10207, 1 rue Claude Daunesse, 06904 Sophia Antipolis cedex, France*

Abstract: One of the critical challenges encountered when modeling solidification processes is to achieve a concurrent and efficient computation of fluid flow and solid mechanics. Several detrimental casting defects justify this development: cracks, either as a result of stresses built at surface or sub-surface in solidified regions during the filling stage of ingot casting, or due to hot tears deep in the mushy zone during solidification; macrosegregation, as a result of thermo-solutal convection flows and possible deformation of solid. It is therefore of crucial importance to provide for a global and synthetic analysis of casting processes considering a single numerical modelling that includes coupling between fluid flow and solid mechanics. A two-step solution strategy combining fluid flow and solid mechanics has been developed. A partitioned formulation is used, performing at each time increment, separately a solid-oriented resolution and a fluid-oriented resolution. Liquid flow (natural convection or forced flow during ingot filling stage), solidification shrinkage as well as thermally induced deformation of the solid regions are taken into account. The paper presents the numerical formulation in a level set finite element context, and associated validation tests. Application in a practical case corresponding to an ingot filling is proposed in order to investigate the solidification process and associated fluid flow and stress evolutions. Some discussions on computations time and others numerical aspects are also developed at the end in order to show the potential improvements of this methodology.

Key words: Solidification; Solid-fluid interaction; Thermohydraulics; Thermomechanics; Finite element; Level set

*Corresponding author. Tel.: +33 4 93 95 74 61, michel.bellet@mines-paristech.fr.

Email addresses: shaojie.zhang@mines-paristech.fr (S. ZHANG), gildas.guillemot@mines-paristech.fr (G. Guillemot), charles-andre.gandin@mines-paristech.fr (Ch.-A. Gandin), michel.bellet@mines-paristech.fr (M. Bellet).

1 Introduction

In industry, it is of crucial importance to predict fluid flow induced segregation phenomena in ingot castings. Concurrently, deformation related defects such as hot tears in the mushy zone or surface cracking during cooling need prediction of stresses built upon cooling. Modelling mechanical problems in the context of solidification thus requires solving both liquid flow in the non-solidified regions and solid deformation in solidified regions.

The liquid flow, carrying heat and chemical species, determines the temperature field and segregation patterns and hence influences the solidification path and the deformation induced by thermal dilatation and non-uniform cooling. In large ingot casting, a considerable amount of the ingot volume may solidify during the filling stage due to long filling duration, leading to formation of surface or sub-surface cracks. Similar observation is possible in continuous casting: surface cracks appear in the thin solid shell formed in the mold region where an intense fluid flow is induced by nozzle jet. Therefore an efficient mechanical analysis through numerical simulation should consider concurrently stress and strains development in the solid regions, and flow evolution in the fluid regions.

Nowadays, either the simulation of fluid flow during ingot filling or the simulation of deformation and stress during cooling are routinely performed by software dedicated to the modelling of casting processes. Computational fluid dynamics (CFD) codes, based on Navier-Stokes equations, and including turbulence models, are efficient to model liquid flow. But such software does not provide access to stress and strain evolution in the solidified domains. Conversely, structural thermomechanical codes, assuming an elasto-viscoplastic behavior, fail in modelling the fluid related phenomena. However, few propositions have emerged for concurrent simulation of fluid related phenomena and stress/strain analysis.

Numerical methods for the solution of such fluid-structure interaction (FSI) can be classified in two categories: the monolithic approach and the partitioned approach. In a monolithic approach, a single set of momentum and mass conservation equations is solved in the whole domain encompassing the fluid and the solid regions. In a partitioned formulation, separate fluid and solid problems are solved and coupled. In order to estimate the coupling effect, Heil *et al.* [1] have defined a FSI index Q , as the ratio of the flow stresses in the fluid and solid (or *structure*) regions: $Q = \bar{\sigma}_{fluid} / \bar{\sigma}_{solid}$, where $\bar{\sigma}$ stands for the equivalent von Mises stress. In the context of solidification, the FSI index keeps very low values. The highest Q values are encountered for thin solid shells just below the solidus, when exposed to fluid flow, or in mushy zones just above the solidus. In such cases, the liquid dynamic viscosity μ_l is about 10^{-3} Pa · s. Assuming a generalized strain rate $\dot{\epsilon}$ in the metal flow in the range of 10 to 1000 s⁻¹, $\bar{\sigma}_{fluid}$, being equal to $3\mu_l\dot{\epsilon}$, is of the order of 10^{-2} to 1 Pa. The flow stress $\bar{\sigma}_{solid}$ of the solid zone at very high temperature being about 1 to 10 MPa, the FSI index Q is then found in the range $[10^{-9}, 10^{-6}]$, expressing a very weak interaction. More concretely, such a solid region is hardly deformed by fluid flow. It was proved by [1] that for such a weak FSI problem, a partitioned approach is more efficient than a monolithic one. Actually, such a low Q -value problem is associated with very poor conditioning

of the stiffness matrices arising in the solution of the momentum conservation. That explains why the liquid viscosity should be arbitrarily maintained at a high value when considering simultaneously liquid and solid metal in a single-step solution of a mechanical problem [2].

As a consequence, in the present work, a partitioned two-step solution algorithm is developed for application to the modeling of solidification processes in ingot casting. The momentum and mass conservations are solved twice at each time increment, thus defining the two steps. In the first step, a solid-oriented solution deriving from an existing thermomechanical solidification model [2,3] is performed in order to calculate stress and deformation fields in solid containing regions. In the second step, a liquid-oriented solution is derived, which addresses the fluid flow in the bulk liquid and in the mushy zone while making use of the solid velocity field derived from the first step. Volume averaging and Darcy's law are used to model the interactions between solid and liquid phases in the mushy zone. Both solutions are formulated with the finite element (FE) method on a single three-dimensional (3D) spatial domain which includes the metal and a surrounding gas as sub-domains. The level set method is used to track the motion of the metal/gas boundary induced by hydrodynamics, solidification shrinkage, thermal dilatation and deformation phenomena. The algorithm is coupled with an existing non-linear energy solver to calculate the temperature field [4]. Validation is demonstrated by comparison with analytical solutions in the context of directional solidification. Finally, application to case studies similar to industrial solidification processes (ingot filling and cooling) is presented and discussed.

2 Numerical model

Typical regions found in casting processing are shown in Fig. 1a, except the molds that are not described in the present contribution. The numerical model of the partitioned solution algorithm consists principally of two steps: the first one, labeled STEP I, is a solid-oriented solution of the momentum and mass conservation equations, dedicated to the strain and stress computation in the regions partially or completely solidified. The second one, labeled STEP II, is a fluid-oriented solution of the momentum and mass conservation equations that aims at determining velocity and pressure fields in the fluid-containing zones, i.e. regions with liquid, mushy zone and gas. In this paper, the presentation will be focused on the numerical issues associated with STEP I and STEP II and with their organization as sequential solvers. The bases of the numerical solutions developed to solve the heat transfer problem and the mechanical problem will not be detailed hereafter. Details can be found in [2-4]. In the following, the level set method is first presented in Section 2.1 as it provides the relevant framework to formulate a unique set of conservation and constitutive equations for the whole domain (i.e. metal and surrounding gas) as well as to track the metal/gas interface between the two sub-domains during the casting process. Conservation and constitutive equations in each region and the final formulation in the level set framework will be described in Section 2.2 for the solid-oriented solution and in Section 2.3 for the liquid-oriented solution. Section 2.4 will be devoted to the general presentation of the partitioned two-step solution algorithm.

2.1 Level set method

The level set method was initially introduced by Osher and Sethian [5] in order to follow moving interfaces. This method has been largely applied to model dynamic interface problems in computational fluid mechanics [6,7] because of its facility to handle topological changes and geometrical dependent quantities. In the present study, the interface Γ between the metal and gas sub-domains, respectively Ω^M and Ω^G , is implicitly represented by the zero-value of a signed distance function, also called level set function, $\varphi(\mathbf{x}, t)$ for any given point \mathbf{x} of a global domain Ω and time t as :

$$\varphi(\mathbf{x}, t) = \begin{cases} d(\mathbf{x}, t) & \text{if } \mathbf{x} \in \Omega^M \\ 0 & \text{if } \mathbf{x} \in \Gamma \\ -d(\mathbf{x}, t) & \text{if } \mathbf{x} \in \Omega^G \end{cases} \quad (1)$$

where $d(\mathbf{x}, t)$ denotes the geometric distance from point \mathbf{x} to the interface Γ at time t . In the Eulerian context, this level set function is convected by the solution velocity field \mathbf{v} through the following transport equation:

$$\frac{\partial \varphi}{\partial t} + \mathbf{v} \cdot \nabla \varphi = 0 \quad (2)$$

However, the eikonal property (i.e. unitary gradient vector) of the level set function is generally not preserved after such a transport. This may be problematic when special meshing technique at interface depends on the geometrical distance, or when the interface motion is curvature dependent through surface tension. Thus, a reset method developed by Shakoor *et al.* [8] is used to preserve this property. The method is based on a geometrical computation of the distance between each FE node and the convected zero-level set interface. This reset step is performed systematically after each transportation of the level set function.

Besides, the level set is used to mix material properties in a transition zone around the interface. The smoothed Heaviside function, \mathcal{H}^M , is then introduced to indicate locally the type of domain. A smooth transition over an artificial interface thickness $[-\varepsilon, +\varepsilon]$ centered at the zero-level set interface is also introduced in order to develop a continuous transition between domains. This function is consequently defined as follows:

$$\mathcal{H}^M(\varphi) = \begin{cases} 0 & \text{if } \varphi < -\varepsilon \\ 1 & \text{if } \varphi > \varepsilon \\ \frac{1}{2} \left(1 + \frac{\varphi}{\varepsilon} + \frac{1}{\pi} \sin\left(\frac{\pi\varphi}{\varepsilon}\right) \right) & \text{if } -\varepsilon \leq \varphi \leq \varepsilon \end{cases} \quad (3)$$

Eq. (3) is used to preserve a smooth transition of physical quantities at interface with an arithmetic mixing law. Denoting ψ^M and ψ^G the values of a physical variable ψ relative to sub-domains Ω^M and Ω^G , the mixed value of ψ through the level set transition zone, $\hat{\psi}$, is defined by:

$$\hat{\psi} = \mathcal{H}^M \psi^M + (1 - \mathcal{H}^M) \psi^G \quad (4)$$

Note that expression (4) holds as well in each of the two sub-domains Ω^M and Ω^G , i.e. outside of the transition zone. In the rest of the paper, the level set framework will be used to follow the interface between metal and gas, as illustrated in Fig. 1b, and the following convention will be used: φ will be counted positively in the metal sub-domain (Ω^M), and negatively in gas (Ω^G), so that at any instant $\mathcal{H}^M(\varphi) = 1$ for a position \boldsymbol{x} in metal, and $\mathcal{H}^M(\varphi) = 0$ in gas.

2.2 STEP I: solid-oriented resolution

This section focuses on the evaluation of thermal stresses and strains in the solid zone. The solver used in STEP I is derived from a previous thermomechanical solidification solver [2,3]. As illustrated in Fig. 1c, two types of constitutive equations are used simultaneously depending on the local state of the metal:

- thermo-elasto-viscoplastic (TEVP) constitutive model in metallic regions where temperature is lower than a critical temperature, T_C . In the present study, it is supposed that T_C is lower than the solidus temperature, T_S .
- thermo-viscoplastic (TVP) model in all other regions (i.e. metallic regions over T_C as well as the gas sub-domain).

In the metal sub-domain, the standard Heaviside function, taken for the temperature difference ($T_C - T$), is introduced as an indicator relative to the use of the TEVP constitutive model. This function consequently differs from the smoothed Heaviside function, \mathcal{H}^M , previously introduced. Its value is one if the temperature is below the critical temperature T_C , and zero otherwise:

$$H(T_C - T) = \begin{cases} 0 & \text{if } T > T_C \\ 1 & \text{if } T \leq T_C \end{cases} . \quad (5)$$

Note that depending on the local nature of the material (gas or metal) and on temperature, the TVP model is either purely Newtonian (gas domain and liquid metal) or viscoplastic (mushy and solid metals over T_C). If the critical temperature, T_C , is lower than the solidus temperature, T_S , the pure viscoplastic model is extended to the solid metal. Then elasticity and strain-hardening effects are ignored in the solid state, between T_C and T_S , i.e. at high temperature. In the present study, T_C is taken equal to the solidus temperature T_S of the alloy. Thus, metal solid regions are fully modelled with the TEVP model. Both TVP and TEVP constitutive models are detailed hereunder. Then the associated conservation equations used with the level set method are introduced. A summary of the weak formulation and its finite element discretization form is finally provided.

2.2.1 Constitutive models for STEP I

2.2.1.1 Thermo-elasto-viscoplasticity (TEVP): solid metal region

A thermo-elasto-viscoplastic model is relevant below the critical temperature T_C as mentioned previously. It is described by the following equations [2]:

$$\dot{\boldsymbol{\varepsilon}} = \dot{\boldsymbol{\varepsilon}}_{el} + \dot{\boldsymbol{\varepsilon}}_{vp} + \dot{\boldsymbol{\varepsilon}}_{th} \quad (6)$$

$$\dot{\boldsymbol{\varepsilon}}_{el} = \mathbf{E}^{-1} \dot{\boldsymbol{\sigma}} = \frac{1+\nu}{E} \dot{\boldsymbol{\sigma}} - \frac{\nu}{E} \text{tr}(\dot{\boldsymbol{\sigma}}) \mathbf{I} \quad (7)$$

$$\dot{\boldsymbol{\varepsilon}}_{vp} = \frac{\sqrt{3}}{2\bar{\sigma}} \left[\frac{\bar{\sigma} - \sigma_Y}{\sqrt{3}K\bar{\varepsilon}^n} \right]_+^{\frac{1}{m}} \mathbf{s} \quad (8)$$

$$\dot{\boldsymbol{\varepsilon}}_{th} = -\frac{1}{3\rho} \frac{d\rho}{dt} \mathbf{I} \quad (9)$$

The strain rate tensor $\dot{\boldsymbol{\varepsilon}}$ is split into an elastic part, $\dot{\boldsymbol{\varepsilon}}_{el}$, a viscoplastic part, $\dot{\boldsymbol{\varepsilon}}_{vp}$, and a thermal part, $\dot{\boldsymbol{\varepsilon}}_{th}$ (Eq. (6)). The latter consists of the thermal expansion rate (Eq. (9)), with ρ the density. Eq. (7) yields the hypoelastic Hooke's law where \mathbf{E} represents the elastic tensor depending on the Young's modulus E , and the Poisson's coefficient ν . $\dot{\boldsymbol{\sigma}}$ denotes the total time derivative of the stress tensor. Eq. (8) gives the relation between the viscoplastic strain rate and the stress deviator \mathbf{s} . It is reminded here that the stress deviator is defined as $\mathbf{s} = \boldsymbol{\sigma} - 1/3 \text{tr}(\boldsymbol{\sigma})\mathbf{I} = \boldsymbol{\sigma} + p\mathbf{I}$, where $\boldsymbol{\sigma}$ is the Cauchy stress tensor, p is the hydrostatic pressure, and \mathbf{I} is the identity tensor. Coefficient K is the viscoplastic consistency, σ_Y denotes the static yield stress below which no viscoplastic deformation occurs. The function $[x]_+$ is equal to 0 when x is negative and to the value x otherwise. Coefficients m and n denote the strain-rate sensitivity coefficient, and the strain hardening coefficient, respectively. Finally, the corresponding relationship between the von Mises equivalent stress, $\bar{\sigma}$, the generalized plastic strain, $\bar{\varepsilon}$, and the equivalent strain rate, $\dot{\bar{\varepsilon}}$, is given by:

$$\bar{\sigma} = \sigma_Y + K(\sqrt{3})^{m+1} \dot{\bar{\varepsilon}}^m \bar{\varepsilon}^n \quad (10)$$

2.2.1.2 Thermo-viscoplasticity (TVP): mushy and liquid metal regions, and gas sub-domain

The thermo-viscoplastic model is used to model the mechanical behavior of gas, liquid and mushy regions. Possibly this model may be extended to solid metal over T_C . In this case, the compressibility is only due to the thermal contribution as elasticity is neglected. Equations of the constitutive model are written as follows:

$$\dot{\boldsymbol{\varepsilon}} = \dot{\boldsymbol{\varepsilon}}_{vp} + \dot{\boldsymbol{\varepsilon}}_{th} \quad (11)$$

$$\dot{\boldsymbol{\varepsilon}}_{vp} = \frac{1}{2K} (\sqrt{3}\dot{\bar{\varepsilon}})^{1-m} \mathbf{s} \quad (12)$$

$$\dot{\boldsymbol{\varepsilon}}_{th} = -\frac{1}{3\rho} \frac{d\rho}{dt} \mathbf{I} \quad (13)$$

The strain rate tensor $\dot{\boldsymbol{\varepsilon}}$ is split into a viscoplastic part, $\dot{\boldsymbol{\varepsilon}}_{vp}$, and a thermal part, $\dot{\boldsymbol{\varepsilon}}_{th}$ (Eq. (11)). Eq. (12) is the classical constitutive law for a generalized non-Newtonian fluid behavior. It relates the viscoplastic strain rate $\dot{\boldsymbol{\varepsilon}}_{vp}$ to the stress deviator \mathbf{s} , in which the strain-rate sensitivity m continuously

increases with the liquid fraction in the mushy zone. The Newtonian behavior, which is assumed to be the behavior law of the gas and of the liquid metal above its liquidus temperature, T_L , is obtained for $m = 1$. In this case, the viscoplastic consistency K is simply the dynamic viscosity of the fluid (liquid metal or gas). Finally, the corresponding relationship between the von Mises equivalent stress $\bar{\sigma}$ and the equivalent strain rate $\dot{\epsilon}$ is the following one:

$$\bar{\sigma} = K(\sqrt{3})^{m+1} \dot{\epsilon}^m \quad (14)$$

It is important to note that gas and liquid metal viscosities will be arbitrarily augmented in the present resolution STEP I, in order to preserve an acceptable conditioning of stiffness matrices (cf analysis in the Introduction section). As a consequence, the velocity field \mathbf{v}_I will show mitigated values in gas and liquid metal. However, as it will be seen later, the resolution STEP II will act as a corrector step in order to finally obtain a good prediction of liquid metal and gas flows.

Mechanical coherency point and continuity with the solid behavior

As reported by Dantzig and Rappaz [9], the mechanical response of the mushy metal is quite different below and over a critical point named coherency point, which can be characterized by a critical liquid fraction g_{coh}^l . At low volume fractions of liquid ($g^l < g_{coh}^l$), the mushy metal can be considered as homogeneous, but simply weakened by the presence of isolated liquid pockets and localized interdendritic films. Referring to the experimental studies conducted by Vicente-Hernandez [10] using needle indentation tests of mushy metal, there is a linear variation of both the viscoplastic consistency and the strain-rate sensitivity between solidus and coherency points:

$$\text{for } g^l \in [0, g_{coh}^l], \quad K(g^l) = K(T_S) + \frac{\partial K}{\partial g^l} g^l \quad \text{and} \quad m(g^l) = m(T_S) + \frac{\partial m}{\partial g^l} g^l \quad (15)$$

with $\partial K / \partial g^l < 0$ and $\partial m / \partial g^l > 0$. Using those relations, the continuity with the solid behavior is ensured, provided that, in the TEVP model, both the yield stress σ_Y and the strain hardening coefficient n tend to zero at the solidus temperature: see Eqs. (10) and (14).

At higher volume fractions of liquid ($g^l \geq g_{coh}^l$), the present model simply expresses a smooth transition towards the Newtonian behavior characterizing the liquid metal. It consists of a mixture rule applied to the flow stress. Considering that the flow stress varies by several orders of magnitude between coherency and liquidus points, a logarithmic mixture rule is proposed:

$$\begin{aligned} & \text{for } g^l \in [g_{coh}^l, 1], \\ \ln(\bar{\sigma}(g^l, \dot{\epsilon})) &= \ln(\bar{\sigma}(g_{coh}^l, \dot{\epsilon})) + \left(\ln(\bar{\sigma}(1, \dot{\epsilon})) - \ln(\bar{\sigma}(g_{coh}^l, \dot{\epsilon})) \right) \frac{g^l - g_{coh}^l}{1 - g_{coh}^l} \\ &= \ln(\bar{\sigma}(g_{coh}^l, \dot{\epsilon})) \frac{1 - g^l}{1 - g_{coh}^l} + \ln(\bar{\sigma}(1, \dot{\epsilon})) \frac{g^l - g_{coh}^l}{1 - g_{coh}^l} \end{aligned} \quad (16)$$

Expressing then the equivalent stress by Eq. (14), a few additional calculations lead to the expressions of K and m as functions of the liquid fraction in the interval of interest:

$$\ln K(g^l) = \ln K(g_{coh}^l) + (\ln K(1) - \ln K(g_{coh}^l)) \frac{g^l - g_{coh}^l}{1 - g_{coh}^l} \quad (17)$$

$$m(g^l) = m(g_{coh}^l) + (1 - m(g_{coh}^l)) \frac{g^l - g_{coh}^l}{1 - g_{coh}^l} \quad (18)$$

2.2.2 Treatment of thermal dilatation and solidification shrinkage in the metal sub-domain for STEP I

Unlike the metal density ρ in Eq. (9), the metal density in Eq. (13) involves at the same time the effect of thermal dilatation and solidification shrinkage. In previous works [2,3,11,12], the metal density used in the solidification interval in Eq. (13) was the mixed density defined by

$$\rho = (1 - g^l)\rho_S + g^l\rho_L \quad (19)$$

where ρ_S and ρ_L are the metal densities at solidus and liquidus temperatures, respectively. Outside the solidification interval, $[T_S, T_L]$, the density in fully solid and fully liquid regions is temperature dependent, respectively corresponding to the function $\rho^S(T)$ and $\rho^L(T)$ and thus accounting for thermal dilatation. Considering Eq. (19), Eq. (13) includes the thermal expansion of the two phases, as well as the solidification shrinkage in the solidification interval. However, two reasons explain the need to change expression (19) in the present study:

- Firstly, applying the shrinkage contribution on the whole solidification interval is not appropriate. This is especially true below the coherency point, in the interval $[0, g_{coh}^l]$, where the stiffness is still high as it consists of a direct extension of the solid behavior. Applying Eq. (19) would make the mechanical problem very stiff, initiating possible numerical difficulties and/or giving birth to spurious local velocity fields.
- Secondly, in the framework of the present two-step solver, we are essentially interested in the intrinsic velocity of the solid phase (*i.e.* the movement of the columnar dendritic structure in the mushy zone) when using the TVP model in STEP I. Using Eq. (19) in the definition of $\dot{\mathbf{x}}_{th}$, the velocity field in STEP I would be a mixture of the movement of the columnar dendritic structure and of the feeding liquid, due to volume change during solidification.

For those two reasons, the approach retained with the STEP I solver in the present work consists in taking into account the thermal dilatation of the sole solid phase in the definition of $\dot{\mathbf{x}}_{th}$:

$$\rho = \rho^S(T) \quad (20)$$

In addition, in order to avoid discontinuity of density ρ at liquidus temperature, the density in the pure liquid zone is also provided by the extension of expression Eq. (20). Even if this approximation is non-physical, the objective of STEP I is to compute velocity and stress fields in the solid zones, together with a good approximation of the intrinsic solid velocity field in the mushy zones. The precise estimation

of the liquid velocity field and the accounting of solidification shrinkage will be ensured in STEP II, as explained later.

2.2.3 Conservation equations

The equation for momentum conservation must be satisfied everywhere in the domain Ω and at any instant. When solving STEP I, inertia effects can be neglected for two reasons. Firstly, the viscosity in liquid and gas regions is arbitrarily increased and secondly, STEP I is essentially dedicated to the calculation of variables in solid regions where accelerations are extremely low. Having in view the application of a mixed velocity-pressure formulation, the pressure, p , is kept as a primary variable and the momentum equation is:

$$\nabla \cdot \mathbf{s} - \nabla p + \rho \mathbf{g} = 0 \quad (21)$$

The tensor \mathbf{s} is related to the velocity field \mathbf{v} . However this involves only the deviatoric part of the constitutive equations (Eqs. (6-9) for TEVP; Eqs. (11-13) for TVP). This is why, in the context of a velocity-pressure resolution, an additional equation should be taken into account, which consists of the spherical part of these constitutive equations. Written in a unified form for both TVP and TEVP, this equation is:

$$\text{tr}(\dot{\boldsymbol{\epsilon}}) = \text{tr}(\dot{\boldsymbol{\epsilon}}_{el})H(T_c - T) + \text{tr}(\dot{\boldsymbol{\epsilon}}_{th}) \quad (22)$$

Considering Eqs. (7) and (9), Eq. (22) can be written as:

$$\text{tr}(\dot{\boldsymbol{\epsilon}}) = \nabla \cdot \mathbf{v} = -H(T_c - T) \frac{\dot{p}}{\chi} - \frac{1}{\rho} \frac{d\rho}{dt} \quad (23)$$

where $\chi = E/(3(1 - 2\nu))$ denotes the elastic module for compressibility. Note that this equation holds in metal only. Because of the assumption of incompressibility in the gas sub-domain, Eq. (23) is transformed in order to be applied to the whole domain Ω by simply multiplying the right hand side by the smooth Heaviside function attached to the metal domain. Then, at any instant t , we must have at any position \mathbf{x} :

$$\text{tr}(\dot{\boldsymbol{\epsilon}}) = \nabla \cdot \mathbf{v} = \mathcal{H}^M(\varphi) \left(-H(T_c - T) \frac{\dot{p}}{\chi} - \frac{1}{\rho} \frac{d\rho}{dt} \right) \quad (24)$$

Applied on the whole domain, Eq. (24) is equivalent to Eq. (23) in the metal, while it yields $\nabla \cdot \mathbf{v} = 0$ in the gas sub-domain.

2.2.4 Weak form and finite element discretization

The numerical resolution of Eqs. (21) and (24) is performed by a non-linear solver as in [2,3] in the framework of the finite element method, using a mixed velocity-pressure formulation, with tetrahedral elements of P1+/P1 type. The principal unknowns are the velocity field, \mathbf{v} , and pressure field, p , respectively. The weak form of Eqs. (21) and (24) is given by:

$$\begin{cases} \int_{\Omega} \mathbf{s} : \dot{\boldsymbol{\varepsilon}}(\mathbf{v}^*) dV - \int_{\Omega} p \nabla \cdot \mathbf{v}^* dV - \int_{\Omega} \rho \mathbf{g} \cdot \mathbf{v}^* dV - \int_{\partial\Omega_{\tau}} \boldsymbol{\tau}_{imp} \cdot \mathbf{v}^* dS = 0 \\ \int_{\Omega} p^* \left(-\nabla \cdot \mathbf{v} + \mathcal{H}^M(\varphi) \left(-H(T_c - T) \frac{\dot{p}}{\chi} - \frac{1}{\rho} \frac{d\rho}{dt} \right) \right) dV = 0 \end{cases} \quad (25)$$

with the following boundary conditions: imposed velocity vector (Dirichlet condition, $\mathbf{v} = \mathbf{v}_{imp}$ on velocity-imposed boundary $\partial\Omega_v$), or imposed stress vector ($\boldsymbol{\tau} = \boldsymbol{\tau}_{imp}$ on $\partial\Omega_{\tau}$). In Eq. (25), \mathbf{v}^* denotes any virtual velocity field belonging to the Sobolev space $H^1(\Omega)$ over the analysis domain Ω with zero boundary condition over $\partial\Omega_v$, and p^* denotes any virtual pressure field belonging to the Sobolev space $H^1(\Omega)$.

Note that in the context of a level set formulation, the tensor \mathbf{s} and the density ρ in the first equation of Eq. (25) should result of a mix – as defined in Eq. (4) – between their expression prevailing in the metal and gas domains:

$$\hat{\mathbf{s}} = \mathcal{H}^M(\varphi) \mathbf{s}^M + (1 - \mathcal{H}^M(\varphi)) \mathbf{s}^G \quad \text{and} \quad \hat{\rho} = \mathcal{H}^M(\varphi) \rho^M + (1 - \mathcal{H}^M(\varphi)) \rho^G \quad (26)$$

Note that the mixed value $\hat{\rho}$ could also be used in the second equation of Eq. (25) but without any effect, because of the already present multiplication by $\mathcal{H}^M(\varphi)$. A similar reasoning can be applied to the expression of χ which is of interest only in the metal sub-domain.

Eq. (25) is then discretized on a finite element mesh Ω_h , composed of linear tetrahedra, with a P1+/P1 formulation [13]. It is just reminded here that this formulation basically consists in adding three extra degrees of freedom for the velocity at the center of each element to ensure the Brezzi-Babuska condition [14,15]:

$$\mathbf{v}_h = \mathbf{v}_h^L + \mathbf{b}_h \quad (27)$$

Hence the discretized velocity field \mathbf{v}_h is divided into two parts: the first part \mathbf{v}_h^L is linear over the element, and verifies the velocity-imposed boundary conditions. The second part \mathbf{b}_h is "bubble-type": linear in each of the four sub-tetrahedra constituting the element and taking zero values along the entire boundary of the element. The finite element discretization form of Eq. (25) is given as follows:

$$\begin{cases} \int_{\Omega_h} \hat{\mathbf{s}}(\mathbf{v}_h^L) : \dot{\boldsymbol{\varepsilon}}(\mathbf{v}_h^{L*}) dV - \int_{\Omega_h} p_h \nabla \cdot \mathbf{v}_h^{L*} dV - \int_{\Omega_h} \hat{\rho} \mathbf{g} \cdot \mathbf{v}_h^{L*} dV - \int_{\partial\Omega_{h\tau}} \boldsymbol{\tau}_{imp} \cdot \mathbf{v}_h^{L*} dS = 0 \\ \int_{\Omega_h} \hat{\mathbf{s}}(\mathbf{b}_h) : \dot{\boldsymbol{\varepsilon}}(\mathbf{b}_h^*) dV - \int_{\Omega_h} p_h \nabla \cdot \mathbf{b}_h^* dV - \int_{\Omega_h} \hat{\rho} \mathbf{g} \cdot \mathbf{b}_h^* dV = 0 \\ \int_{\Omega_h} p_h^* \left(-\nabla \cdot (\mathbf{v}_h^L + \mathbf{b}_h) + \mathcal{H}^M(\varphi) \left(-H(T_c - T) \frac{\dot{p}_h}{\chi} - \frac{1}{\rho} \frac{d\rho}{dt} \right) \right) dV = 0 \end{cases} \quad (28)$$

At this stage, it should be noted that different constitutive equations cannot be used concurrently in a given finite element, *i.e.* TVP at an integration point and TEVP at another one. This is inherent to the P1+/P1 character of elements. Therefore the value of the smooth Heaviside function $\mathcal{H}^M(\varphi)$ used in Eq.

(25) and the second equation of Eq. (28) is calculated using the φ value at the center of each tetrahedron. Similarly, the Heaviside function in the last bracketed expression is calculated using the temperature at the center of each tetrahedron: $H(T_C - T_{center})$.

Without entering into the details of the resolution of Eq. (28), it is worth noting that the "bubble" extra-unknowns \mathbf{b}_h can be eliminated because they are internal to each finite element. This explains that the second equation in Eq. (28) can in fact be injected in the two others, yielding only (\mathbf{v}_h^l, p_h) as principal unknowns. Details on "bubble elimination" or "bubble condensation" can be found in [3] and references therein. The resulting set of equations is then solved with the Newton-Raphson iterative method. At each iteration, the corrections of nodal values are calculated by solving a set of linear equations, using an iterative solver (preconditioned conjugate residual solver with block Jacobi preconditioning and incomplete LU factorization). In order to optimize the convergence of this solver, and in addition to the use of the preconditioner, an adaptive change of variable is carried out regarding the pressure degrees of freedom. The objective is first to homogenize units in Eq. (28) in order to better express the norm of residual vectors, and second to monitor the amplitude of the diagonal terms of the different blocks of the stiffness matrix. Further details on this change of variable, which is performed at each time increment and for each node, can be found in [16].

The velocity and pressure fields obtained from this first step solid-oriented resolution (STEP I), through the resolution of Eq. (28), are denoted (\mathbf{v}_I, p_I) .

2.2.5 Remarks and discussion regarding STEP I resolution

It is important to remind the main features of STEP I:

- i) *The values of the fluid viscosity are arbitrarily augmented for both the liquid metal and the gas.* As already outlined in Section 2.2.1.2, this keeps the solver robust by preserving an acceptable conditioning of the stiffness matrices. In the perspective of a two-step resolution algorithm, no problem should occur from that. Although the velocity field \mathbf{v}_I will effectively show underestimated values in gas and liquid metal because of such arbitrary high viscosities, the resolution STEP II (see next Section) will act as a corrector step to finally provide a good prediction of liquid metal and gas flows.
- ii) *The mechanical behavior of the metal in the solidification interval (between solidus and coherency point) consists of an extension of metal behavior in the solid state.* The objective is to develop a solution field, \mathbf{v}_I , close to the velocity field of the solid phase in the mushy zone defined by the solidification interval. This is in view of STEP II resolution in which it will be necessary to express a relative velocity between the liquid and the solid phase. The latter will be taken as \mathbf{v}_I , as calculated in STEP I, see next Section. It is reminded here that in its current development state, the present approach is restricted to dendritic columnar growth of the solid phase.
- iii) *The temperature variation of the density of the metal in the solidification interval is chosen as an extension of density variation in the solid state, in line with the previous feature.* From what

precedes regarding constitutive modelling of metal in the solidification interval in STEP I, it follows that the density variation should be selected accordingly. This is why it has been chosen to restrict the thermal part of the strain-rate tensor, $\boldsymbol{\varepsilon}_{th}$, to the sole dilatation of the sole solid phase. As a consequence, solidification shrinkage is not modelled in STEP I resolution, but will be taken into account in the STEP II resolution, in order to ensure global mass conservation.

Because of the above mentioned features, it is clear that STEP I cannot give access to any information about the liquid flow due to thermo-solutal convection and shrinkage, both in the liquid bulk and in the mushy zone through the solid phase. However, an accurate calculation of such liquid flow is obviously of paramount importance in view of energy and chemical species transport. Thus, a liquid-oriented resolution is necessary to supplement, in a coupled way, the solid-oriented resolution. This is precisely the objective of the STEP II resolution, which is described in the next Section.

2.3 STEP II: liquid-oriented resolution

The second step is a fluid-oriented solution of the momentum and mass conservation equations, in charge of calculating an accurate velocity field in the liquid metal - including the mushy zone - and in the gas. In the present work, it is yet operated on the whole computational domain, but – as explained further – in the solid metallic regions, the velocity field is imposed to its value arising from the STEP I solution:

$$\mathbf{v}_{II}^{imp} = \mathbf{v}_I \text{ if } T < T_S \text{ and } \varphi > 0 \quad (29)$$

An accurate description of the interdendritic liquid flow in the mushy zone requires an effective two-phase approach. In the literature the different studies are based on the volume averaging technique. The basics of the method in the context of solidification are not detailed in the present paper. However, a detailed description can be found in [17-19]. In this section, a three-dimensional finite element two-phase model relative to the liquid phase is proposed, based on the previous works of Gouttebroze *et al.* [20,21] and Saad *et al.* [4] who developed a two-phase model in the context of a stationary (fixed) solid phase, to calculate the liquid flow both in the mushy zone and in the bulk liquid.

The proposed liquid-oriented solver is limited to a columnar dendritic solid phase. The movement of this latter phase is taken into account both in the momentum interaction between phases as modelled by the Darcy law, and in the global mass conservation. The conservation equations supporting the STEP II solver are introduced in the following. The weak formulation and its finite element discretization with the SUPG-PSPG formulation are presented, in the context of the level set method. Finally, the coupling with the solid-oriented resolution performed in STEP I is presented and discussed.

2.3.1 Two-phase model during solidification

The two-phase approach was initially proposed in the context of solidification in the paper of Ganesan and Poirier [17] to model the liquid flow through a mushy zone defined by a stationary dendritic solid phase. Ni and Beckermann [18] extended this model to the transport of equiaxed dendritic crystals. In

the present work, we are interested in the modelling of interdendritic liquid flow through the solid phase in the mushy zone, the solid phase being in the form of a columnar dendritic structure. Interaction with equiaxed grains is not considered.

From the above mentioned references, the conservation equations that govern the flow of the liquid phase in a representative volume element (RVE) can be initially written as follows:

$$\begin{cases} \frac{\partial}{\partial t} (g^l \langle \rho \rangle^l \langle \mathbf{v} \rangle^l) + \nabla \cdot (g^l \langle \rho \rangle^l \langle \mathbf{v} \rangle^l \times \langle \mathbf{v} \rangle^l) - \nabla \cdot \langle \mathbf{s}^l \rangle + \nabla \langle p^l \rangle - g^l \langle \rho \rangle^l \mathbf{g} = \mathbf{M}^l \\ \frac{\partial}{\partial t} (g^l \langle \rho \rangle^l + g^s \langle \rho \rangle^s) + \nabla \cdot (g^l \langle \rho \rangle^l \langle \mathbf{v} \rangle^l + g^s \langle \rho \rangle^s \langle \mathbf{v} \rangle^s) = 0 \end{cases} \quad (30)$$

The first equation is the momentum conservation equation of the liquid phase, averaged on the RVE. The second equation is the total mass conservation equation of solid and liquid phases, also issued from the averaging process. In these expressions, g^l and g^s are respectively the volume fraction of liquid and solid phases in the RVE, $\langle \mathbf{v} \rangle^l$ and $\langle \mathbf{v} \rangle^s$ are the intrinsic velocity of each phase, $\langle \rho \rangle^l$ and $\langle \rho \rangle^s$ are the intrinsic density of each phase, $\langle \mathbf{s}^l \rangle$ is the averaged deviatoric stress tensor of the liquid phase. Note that the dispersion terms are neglected to obtain Eq. (30). \mathbf{M}^l is the interfacial momentum relative to the liquid phase:

$$\mathbf{M}^l = \frac{1}{V_0} \int_{\Gamma^{l/s}} (\langle \mathbf{s} \rangle^l - \langle p \rangle^l \mathbf{I}) \mathbf{n}^{l/s} dS - \frac{1}{V_0} \int_{\Gamma^{l/s}} \langle \rho \rangle^l \langle \mathbf{v} \rangle^l (\langle \mathbf{v} \rangle^l - \mathbf{v}^*) \cdot \mathbf{n}^{l/s} dS \quad (31)$$

where V_0 is the volume of RVE, $\Gamma^{l/s}$ denotes the interface between solid and liquid phases, and $\mathbf{n}^{l/s}$ is the outward (relative to the liquid phase) unit vector to $\Gamma^{l/s}$. The second term at the RHS is induced by inertia and phase transformation, with \mathbf{v}^* the interfacial velocity vector of the s/l interface.

The first term at the RHS is due to interfacial stress and can be divided into two parts. The second part, $-1/V_0 \int_{\Gamma^{l/s}} \langle p \rangle^l \mathbf{n}^{l/s} dS$, can be approximated as $\langle p \rangle^{l*} \nabla g^l$ with $\langle p \rangle^{l*}$ the average liquid pressure onto the interface. Assuming that there is an immediate equilibrium of pressure in the liquid phase, we have:

$$\langle p \rangle^{l*} = \langle p \rangle^l \quad (32)$$

Therefore, this second part, written as $\langle p \rangle^l \nabla g^l$, can be combined with the term $\nabla \langle p^l \rangle$ in the momentum equation to finally yield the term $g^l \nabla \langle p \rangle^l$. The second part, $1/V_0 \int_{\Gamma^{l/s}} \langle \mathbf{s} \rangle^l \mathbf{n}^{l/s} dS$, is generally interpreted as the average interfacial viscous stress exerted by the solid structure onto the liquid phase and vice-versa. In the case of a slow fluid flow through a columnar dendritic structure, its expression can be written as [17,22,23]:

$$\frac{1}{V_0} \int_{\Gamma^{l/s}} \langle \mathbf{s} \rangle^l \mathbf{n}^{l/s} dS = -g^{l2} \mu^l \mathbf{K}^{-1} (\langle \mathbf{v} \rangle^l - \langle \mathbf{v} \rangle^s) \quad (33)$$

where \mathbf{K} is the permeability tensor and μ^l the dynamic viscosity of the liquid phase. \mathbf{K} is represented by a 3×3 matrix containing at least two different components, considering the anisotropy of the columnar

dendritic structure. However, for the sake of simplicity, in most literature studies, an isotropic permeability is assumed and thus the permeability tensor reduces to a simple scalar K . The same assumption is done in the present work, the permeability is approximated by the well-known Carman-Kozeny relationship [24], assuming that the specific surface of the solid phase is equal to that of uniform spheres with constant diameter λ_2 :

$$K = \frac{\lambda_2^2 g^l^3}{180(1 - g^l)^2} \quad (34)$$

where λ_2 is the secondary interdendritic spacing, which is defined a priori. Another approximation in Eq. (31) consists in neglecting the first contribution in the momentum exchange term. Indeed, this term represents the exchange of momentum due to inertia and volume change during solidification. Considering liquid flow in the mushy zone, when the liquid phase is dominant (*i.e.* $g^l > 0.7$), the liquid flow induced by the thermal-solutal convection is much greater than that induced by phase change. On the other hand, when the local amount of liquid is relatively small, the interfacial viscous effect (second contribution in Eq. (31)) is certainly dominant compared to that induced by phase change. In fact, in conventional industry casting applications, the volume change due to solid/liquid transformation is small and it is commonly accepted that the first contribution in the momentum exchange term can be neglected. Finally, the conservation equations dedicated to the liquid phase can be obtained, in the context of a non-stationary columnar dendritic solid structure in the mushy zone:

$$\left\{ \begin{array}{l} \frac{\partial}{\partial t} (g^l \langle \rho \rangle^l \langle \mathbf{v} \rangle^l) + \nabla \cdot (g^l \langle \rho \rangle^l \langle \mathbf{v} \rangle^l \times \langle \mathbf{v} \rangle^l) - \nabla \cdot \langle \mathbf{s}^l \rangle + g^l \nabla \langle p \rangle^l - g^l \langle \rho \rangle^l \mathbf{g} \\ \quad + g^{l^2} \mu^l K^{-1} (\langle \mathbf{v} \rangle^l - \langle \mathbf{v} \rangle^s) = 0 \\ \frac{\partial}{\partial t} (g^l \langle \rho \rangle^l + g^s \langle \rho \rangle^s) + \nabla \cdot (g^l \langle \rho \rangle^l \langle \mathbf{v} \rangle^l + g^s \langle \rho \rangle^s \langle \mathbf{v} \rangle^s) = 0 \end{array} \right. \quad (35)$$

Metal in the liquid state is considered as an incompressible Newtonian fluid. Its microscopic constitutive equation is expressed by:

$$\mathbf{s}^l = \mu^l (\nabla \mathbf{v}^l + \nabla^T \mathbf{v}^l) \quad (36)$$

As justified by Ni and Beckermann [18], taking into account that the density differences between the phases are small, that the phase change rates are low, and that the interfacial velocities of the liquid and solid phases are approximately equal, the averaged deviatoric stress tensor $\langle \mathbf{s}^l \rangle$ can be modelled as:

$$\langle \mathbf{s}^l \rangle = \mu^l (\nabla \langle \mathbf{v} \rangle^l + \nabla^T \langle \mathbf{v} \rangle^l) \quad (37)$$

where $\langle \mathbf{v} \rangle^l = g^l \langle \mathbf{v} \rangle^l$ denotes the averaged (or so-called superficial) liquid velocity $\langle \mathbf{v} \rangle^l$. Considering that this velocity is not necessarily divergence free, it is preferred here to consider the following expression:

$$\langle \mathbf{s}^l \rangle = \mu^l \text{dev}(\nabla \langle \mathbf{v} \rangle^l + \nabla^T \langle \mathbf{v} \rangle^l) \quad (38)$$

where $\text{dev}(\mathbf{a})$ stands for the deviatoric part of a tensor \mathbf{a} : $\text{dev}(\mathbf{a}) = \mathbf{a} - 1/3 \text{tr}(\mathbf{a})\mathbf{I}$. Finally, considering the superficial liquid velocity as the velocity unknown, Eq. (35) can be reformulated as follows:

$$\begin{cases} \frac{\partial}{\partial t} (\langle \rho \rangle^l \langle \mathbf{v}^l \rangle) + \frac{1}{g^l} \nabla \cdot (\langle \rho \rangle^l \langle \mathbf{v}^l \rangle \times \langle \mathbf{v}^l \rangle) - \nabla \cdot \langle \mathbf{s}^l \rangle + g^l \nabla \langle p \rangle^l - g^l \langle \rho \rangle^l \mathbf{g} \\ \quad + g^l \mu^l \mathbf{K}^{-1} (\langle \mathbf{v}^l \rangle - g^l \langle \mathbf{v} \rangle^s) = 0 \\ \nabla \cdot \langle \mathbf{v}^l \rangle = -\frac{1}{\langle \rho \rangle^l} \left(\frac{\partial}{\partial t} (g^l \langle \rho \rangle^l + g^s \langle \rho \rangle^s) + \langle \mathbf{v}^l \rangle \cdot \nabla \langle \rho \rangle^l + \nabla \cdot (g^s \langle \rho \rangle^s \langle \mathbf{v} \rangle^s) \right) \end{cases} \quad (39)$$

2.3.2 Formulations coupling with solid-oriented resolution STEP I and with level set method

An important issue in this liquid-oriented resolution step is to identify the intrinsic average velocity of the solid phase, $\langle \mathbf{v} \rangle^s$, which is involved both in the momentum and mass conservation equations of Eq. (39). As underlined in Section 2.2, in the mushy zone, the velocity field obtained in the solid-oriented resolution, \mathbf{v}_I , is made to be an estimate of the intrinsic velocity of the solid phase in the mushy zone. At the same time, from a numerical point of view, there is an interest in obtaining a liquid velocity field, deep in the mushy zone, that would converge to the intrinsic velocity of the solid zone. This is why it is chosen in the present study to replace $g^l \langle \mathbf{v} \rangle^s$ by \mathbf{v}_I in the Darcy term in the momentum conservation equation. Note such a choice is feasible as long as the intrinsic velocity of solid structure deep in the mushy zone remains small compared to the average velocity of the liquid phase in front of the mushy zone, that is to say for rather small values of the solid phase movement. Fortunately, this is generally the case for the solidification problems under consideration in this work. Consequently, the conservation equations to be solved in the STEP II resolution are proposed hereunder. In these expressions, the coupling from STEP I to STEP II appears clearly:

$$\begin{cases} \frac{\partial}{\partial t} (\langle \rho \rangle^l \langle \mathbf{v}^l \rangle) + \frac{1}{g^l} \nabla \cdot (\langle \rho \rangle^l \langle \mathbf{v}^l \rangle \times \langle \mathbf{v}^l \rangle) - \nabla \cdot \langle \mathbf{s}^l \rangle + g^l \nabla \langle p \rangle^l - g^l \langle \rho \rangle^l \mathbf{g} + g^l \mu^l \mathbf{K}^{-1} (\langle \mathbf{v}^l \rangle - \mathbf{v}_I) = 0 \\ \nabla \cdot \langle \mathbf{v}^l \rangle = -\frac{1}{\langle \rho \rangle^l} \left(\frac{\partial (g^l \langle \rho \rangle^l + g^s \langle \rho \rangle^s)}{\partial t} + \langle \mathbf{v}^l \rangle \cdot \nabla \langle \rho \rangle^l + \nabla \cdot (g^s \langle \rho \rangle^s \mathbf{v}_I) \right) \end{cases} \quad (40)$$

Deep in the mushy zone, at low liquid fractions, the expression of the Darcy term provides a penalty effect: based on Eq. (34), $g^l \mu^l \mathbf{K}^{-1} \rightarrow +\infty$ when $g^l \rightarrow 0$. This enforces the continuity between the liquid velocity field $\langle \mathbf{v}^l \rangle$ and \mathbf{v}_I , which is supposed to be close to the solid velocity field.

Let us note also that the STEP II resolution does not need to be operated in the fully solid regions. In such zones, the relevant information is calculated in STEP I: metal velocity, strain-rate tensor, equivalent strain-rate, stress deviator, pressure (from which the stress tensor can be calculated). Therefore, in the present study, the STEP II resolution is performed on the whole domain, but the velocity \mathbf{v}_{II} is imposed to \mathbf{v}_I (which is previously calculated in STEP I) at any node belonging to a "solid" finite element, that is an element for which $\mathcal{H}^M(\varphi_{center}) = 1$ and $g_{center}^l = 0$.

It is worth noting that Eq. (40) can be used in bulk liquid regions. In this case, $\langle \rho \rangle^l$, $\langle \mathbf{v} \rangle^l$ and $\langle p \rangle^l$ are simply the density, velocity and pressure fields, ρ , \mathbf{v} and p , respectively. The classical Navier-Stokes equations for fluid mechanics are retrieved:

$$\begin{cases} \rho \left(\frac{\partial \mathbf{v}}{\partial t} + (\nabla \mathbf{v}) \mathbf{v} \right) - \nabla \cdot (\mu^l \nabla \mathbf{v}) + \nabla p - \rho \mathbf{g} = 0 \\ \nabla \cdot \mathbf{v} = -\frac{1}{\rho} \left(\frac{\partial \rho}{\partial t} + \mathbf{v} \cdot \nabla \rho \right) \end{cases} \quad (41)$$

Similarly, the same equation can be extended in the gas, which will be considered, like in STEP I resolution, as a Newtonian fluid. In a first approach, the study focuses on the flow of metal liquid, not on the gas flow. This is why the gas is assumed incompressible, its density being a constant, ρ^G . The second equation reduces in this case to: $\nabla \cdot \mathbf{v} = 0$.

Having noted that the conservation equations in Eq. (40) apply to the different domains: liquid metal in the mushy zone, bulk liquid metal, and gas, the level set method can be used to form a unique set of equations, with unknowns velocity $\mathbf{v} \equiv \langle \mathbf{v} \rangle^l$ and pressure $p \equiv \langle p \rangle^l$, which could be applied to the whole domain and with variables mixed in the neighborhood of the interface defined by $\varphi = 0$, using the smooth Heaviside function $\mathcal{H}^M(\varphi)$ relative to the metal:

$$\begin{cases} \hat{\rho}^F = \mathcal{H}^M \langle \rho \rangle^l + (1 - \mathcal{H}^M) \rho^G & \hat{g}^F = \mathcal{H}^M g^l + (1 - \mathcal{H}^M) \\ \hat{\mu}^F = \mathcal{H}^M \mu^l + (1 - \mathcal{H}^M) \mu^G & \hat{g} \hat{\rho}^F = \mathcal{H}^M g^l \langle \rho \rangle^l + (1 - \mathcal{H}^M) \rho^G \end{cases} \quad (42)$$

Based on Eqs. (40) and (41), and on the mixed properties defined in Eq. (42), the following set of equations is proposed:

$$\begin{cases} \left(\frac{\partial}{\partial t} (\hat{\rho}^F \mathbf{v}) + \frac{1}{\hat{g}^F} \nabla \cdot (\hat{\rho}^F \mathbf{v} \times \mathbf{v}) \right) - \nabla \cdot \hat{\mathbf{g}} \mathbf{s}^F + \hat{g}^F \nabla p - \hat{g} \hat{\rho}^F \mathbf{g} + \hat{g}^F \hat{\mu}^F (\hat{\mathbf{K}}^F)^{-1} (\mathbf{v} - \mathbf{v}_I) = 0 \\ \nabla \cdot \mathbf{v} = -\frac{\mathcal{H}^M}{\langle \rho \rangle^l} \left(\frac{\partial}{\partial t} (g^l \langle \rho \rangle^l + g^s \langle \rho \rangle^s) + \mathbf{v} \cdot \nabla \langle \rho \rangle^l + \nabla \cdot (g^s \langle \rho \rangle^s \mathbf{v}_I) \right) \end{cases} \quad (43)$$

with $\hat{\mathbf{g}} \mathbf{s}^F$ the mixed deviatoric stress tensor deriving from the selected constitutive equations in the metal domain (mushy zone or bulk liquid) and in the gas domain:

$$\hat{\mathbf{g}} \mathbf{s}^F = \mathcal{H}^M g^l \langle \mathbf{s} \rangle^l + (1 - \mathcal{H}^M) \mathbf{s}^G \quad (44)$$

and $\hat{\mathbf{K}}^F$ the mixed permeability, governing over the metal and gas domains:

$$\hat{\mathbf{K}}^F = \frac{\lambda_2^2 \hat{g}^{F3}}{180(1 - \hat{g}^F)^2} \quad (45)$$

Noting that in the gas domain, $\hat{\mathbf{K}}^F$ tends well to infinite and the Darcy term in the first equation of Eq. (43) is neglected. Table 1 gives the expressions of the different mixed properties in each of the

considered regions. It allows an easy check that Eq. (43) tends to Eq. (40) in the mushy regions, while it resumes to Eq. (41) in the bulk liquid regions of the metal sub-domain as well as in the gas sub-domain.

2.3.3 Weak formulation and finite element discretization

The expression of the weak formulation of Eq. (43) can be obtained after some calculations requiring successive integration by part of certain terms. These calculation details are not given here, they can be found in [25]. Finally, this weak form can be written as follows:

$$\left\{ \begin{array}{l} \int_{\Omega} \frac{1}{\hat{g}^F} \left(\frac{\partial}{\partial t} (\hat{\rho}^F \mathbf{v}) + \frac{1}{\hat{g}^F} \nabla \cdot (\hat{\rho}^F \mathbf{v} \times \mathbf{v}) \right) \cdot \mathbf{v}^* dV + \int_{\Omega} \frac{1}{\hat{g}^F} \widehat{\mathbf{g}} \mathbf{s}^F : \dot{\boldsymbol{\varepsilon}}(\mathbf{v}^*) dV - \int_{\Omega} p \nabla \cdot \mathbf{v}^* dV \\ - \int_{\Omega} \frac{\widehat{g} \rho^F}{\hat{g}^F} \mathbf{g} \cdot \mathbf{v}^* dV - \int_{\partial \Omega_{\tau}} \frac{1}{\hat{g}^F} \boldsymbol{\tau}_{imp} \cdot \mathbf{v}^* dS + \int_{\Omega} \hat{\mu}^F (\hat{\mathbf{K}}^F)^{-1} (\mathbf{v} - \mathbf{v}_I) \cdot \mathbf{v}^* dV = 0 \\ \int_{\Omega} -p^* \left(\nabla \cdot \mathbf{v} + \frac{\mathcal{H}^M}{\langle \rho \rangle^l} \left(\frac{\partial}{\partial t} (g^l \langle \rho \rangle^l + g^s \langle \rho \rangle^s) + \mathbf{v} \cdot \nabla \langle \rho \rangle^l + \nabla \cdot (g^s \langle \rho \rangle^s \mathbf{v}_I) \right) \right) dV = 0 \end{array} \right. \quad (46)$$

where \mathbf{v}^* denotes any virtual velocity field belonging to the Sobolev space $H^1(\Omega)$ over the analysis domain Ω with zero boundary condition over velocity-imposed boundary and Dirichlet conditions for solid zones with values from STEP I. p^* denotes any virtual pressure field belonging to the Sobolev space $H^1(\Omega)$.

In addition, the expression of the inertia term is simplified:

$$\frac{\partial}{\partial t} (\hat{\rho}^F \mathbf{v}) + \frac{1}{\hat{g}^F} \nabla \cdot (\hat{\rho}^F \mathbf{v} \times \mathbf{v}) \approx \hat{\rho}_0^F \left(\frac{\partial \mathbf{v}}{\partial t} + \frac{1}{\hat{g}^F} \nabla \cdot (\mathbf{v} \times \mathbf{v}) \right) \approx \hat{\rho}_0^F \left(\frac{\partial \mathbf{v}}{\partial t} + \frac{1}{\hat{g}^F} (\nabla \mathbf{v}) \mathbf{v} \right) \quad (47)$$

with $\hat{\rho}_0^F$ defined by

$$\hat{\rho}_0^F = \mathcal{H}^M \langle \rho \rangle_0^l + (1 - \mathcal{H}^M) \rho^G \quad (48)$$

where $\langle \rho \rangle_0^l$ represents the reference density of liquid.

On one hand, the effect of the time and space derivatives of $\hat{\rho}_0^F$ is neglected, and on another hand the contribution of the divergence of the velocity is neglected. It is anticipated here that those shortcomings make the coding of the inertia term easier. However, it is still difficult to assess the impact on the solution, the main risk being the occurrence of spurious velocities in the interfacial region. Moreover, the expression of the gravity term is simplified:

$$\left\{ \begin{array}{l} \frac{\widehat{g} \rho^F}{\hat{g}^F} \mathbf{g} = \frac{\mathcal{H}^M g^l \langle \rho \rangle^l + (1 - \mathcal{H}^M) \rho^G}{\mathcal{H}^M g^l + (1 - \mathcal{H}^M)} \mathbf{g} \\ = \frac{\mathcal{H}^M g^l \langle \rho \rangle_0^l (1 - \beta^l (T - T_{ref})) + (1 - \mathcal{H}^M) \rho^G}{\mathcal{H}^M g^l + (1 - \mathcal{H}^M)} \mathbf{g} \approx \hat{\rho}_0^F \hat{\theta}^F \mathbf{g} \end{array} \right. \quad (49)$$

with $\hat{\theta}^F$ defined by

$$\hat{\theta}^F = \mathcal{H}^M \left(1 - \beta^l (T - T_{ref}) \right) + (1 - \mathcal{H}^M) \quad (50)$$

where β^l is the thermal dilatation coefficient of liquid phase and T_{ref} the corresponding reference temperature.

It is well known that the conventional weak formulation as described in Eq. (46) may encounter numerical oscillations and other instabilities when solving problems with high Reynolds numbers. This is why the SUPG-PSPG stabilization method, initially proposed by Tezduyar *et al.* [26,27] is used. At Cemef laboratory, the SUPG-PSPG formulation was introduced by Gouttebroze *et al.* [20,21] and was later implemented by Hachem *et al.* [28,29]. The present work is based on the latter developments. The discretized formulation over the computational mesh Ω_h is given by:

$$\left\{ \begin{aligned} & \int_{\Omega_h} \frac{\hat{\rho}_0^F}{\hat{g}^F} \left(\frac{\partial \mathbf{v}_h}{\partial t} + \frac{1}{\hat{g}^F} (\nabla \mathbf{v}_h) \mathbf{v}_h \right) \cdot \mathbf{v}_h^* dV + \int_{\Omega_h} \frac{1}{\hat{g}^F} \hat{g} \mathbf{s}^F : \dot{\boldsymbol{\varepsilon}}(\mathbf{v}_h^*) dV - \int_{\Omega_h} p_h \nabla \cdot \mathbf{v}_h^* dV - \int_{\Omega_h} \hat{\rho}_0^F \hat{\theta}^F \cdot \mathbf{v}_h^* dV \\ & \quad - \int_{\partial \Omega_{h\tau}} \frac{1}{\hat{g}^F} \boldsymbol{\tau}_{imp} \cdot \mathbf{v}_h^* dS + \int_{\Omega_h} \hat{\mu}^F (\hat{K}^F)^{-1} (\mathbf{v}_h - \mathbf{v}_l) \cdot \mathbf{v}_h^* dV \\ & + \int_{\Omega_h} \tau_{SUPG} (\nabla \mathbf{v}_h^*) \mathbf{v}_h \cdot \left\{ \frac{\hat{\rho}_0^F}{\hat{g}^F} \frac{\partial \mathbf{v}_h}{\partial t} + \frac{\hat{\rho}_0^F}{\hat{g}^{F2}} (\nabla \mathbf{v}_h) \mathbf{v}_h - \frac{1}{\hat{g}^F} \nabla \cdot \hat{g} \mathbf{s}^F + \nabla p_h - \hat{\rho}_0^F \hat{\theta}^F \mathbf{g} + \hat{\mu}^F (\hat{K}^F)^{-1} (\mathbf{v}_h - \mathbf{v}_l) \right\} dV \\ & \quad + \int_{\Omega_h} \tau_{LSIC} (\nabla \cdot \mathbf{v}_h^*) \hat{\rho}_0^F (\nabla \cdot \mathbf{v}_h) dV = 0 \\ & \int_{\Omega_h} -p_h^* \left(\nabla \cdot \mathbf{v}_h + \frac{\mathcal{H}^M}{\langle \rho \rangle^l} \left(\frac{\partial}{\partial t} (g^l \langle \rho \rangle^l + g^s \langle \rho \rangle^s) + \mathbf{v}_h \cdot \nabla \langle \rho \rangle^l + \nabla \cdot (g^s \langle \rho \rangle^s \mathbf{v}_l) \right) \right) dV \\ & + \int_{\Omega_h} \tau_{PSPG} \frac{\nabla p_h^*}{\hat{g}^F} \cdot \left\{ \frac{\hat{\rho}_0^F}{\hat{g}^F} \frac{\partial \mathbf{v}_h}{\partial t} + \frac{\hat{\rho}_0^F}{\hat{g}^{F2}} (\nabla \mathbf{v}_h) \mathbf{v}_h - \frac{1}{\hat{g}^F} \nabla \cdot \hat{g} \mathbf{s}^F + \nabla p_h - \hat{\rho}_0^F \hat{\theta}^F \mathbf{g} + \hat{\rho}_0^F \hat{\theta}^F (\mathbf{v}_h - \mathbf{v}_l) \right\} dV = 0 \end{aligned} \right. \quad (51)$$

\mathbf{v}_h , \mathbf{v}_h^* , p_h , p_h^* are the discretized forms of \mathbf{v} , \mathbf{v}^* , p , and p^* , respectively. τ_{SUPG} is the SUPG (Streamline-Upwind/Petrov-Galerkin) stabilization parameter; τ_{PSPG} is the PSPG (Pressure-Stabilization/Petrov-Galerkin) stabilization parameter; τ_{LSIC} is the LSIC (Least-Squares on Incompressibility Constant) stabilization parameter. The linear system described in Eq. (51) is solved, using a preconditioned conjugate residual solver with block Jacobi preconditioning and incomplete LU factorization.

The velocity and pressure fields obtained from this second step liquid-oriented resolution (STEP II), through the resolution of Eq. (51), are denoted $(\mathbf{v}_{II}, p_{II})$.

2.4 Partitioned resolution strategy

The partitioned resolution strategy is presented hereunder, considering that the two resolutions STEP I and STEP II are performed once at each constant time increment Δt . The incremental resolution scheme is divided in 7 modules, as illustrated in Fig. 2.

- In a first step, the energy equation is solved, giving access to the temperature distribution in the metal and in the gas, and the liquid metal fraction [4]. The advection velocity in the convection terms consists of the velocity field \mathbf{v}_{II} calculated at the previous time increment.
- The second step is the first stage for the momentum and mass conservations, which consists of the solid-oriented global solution STEP I. It provides velocity and pressure fields on the whole domain: (\mathbf{v}_I, p_I) . However, only \mathbf{v}_I at nodes belonging to fully solid elements will be used in the follow-up of the resolution scheme. The stress tensor $\boldsymbol{\sigma}$, and the generalized plastic strain $\bar{\epsilon}$ and strain rate $\dot{\bar{\epsilon}}$ are calculated in the fully solid elements. Such a solid-oriented resolution is not necessary when solid is not yet formed. This is the case for example in the early filling stage of a casting process, when all metal is still in liquid state.
- The third step is the second stage for the momentum and mass conservations, which consists of the fluid-oriented global solution STEP II. It provides velocity and pressure fields on the whole domain: $(\mathbf{v}_{II}, p_{II})$. Note that at nodes belonging to fully solid elements, \mathbf{v}_{II} is imposed equal to \mathbf{v}_I .
- The fourth step consists in updating the level set function for tracking of the metal/gas boundary as well as the mesh. Regarding mesh updating, the nodes belonging to fully solid elements are considered Lagrangian. Their position is updated according to the following expression (note that $\mathbf{v}_{II} = \mathbf{v}_I$ for such nodes):

$$\mathbf{x}^{new} = \mathbf{x}^{old} + \Delta t \mathbf{v}_{II} \quad (52)$$

All other nodes of the finite element grid are considered Eulerian and then remain fixed. The level set function φ is updated through the convection-reinitialization scheme mentioned in Section 2.1. The advection velocity field \mathbf{v} in the convection term of Eq. (2) is defined according to the node temperature. For the nodes with temperature higher than the solidus, $\mathbf{v} = \mathbf{v}_{II}$. For all other nodes, $\mathbf{v} = \mathbf{v}_I$. Such a definition of the advection velocity considers that the velocity from STEP II describes better the moving interface of liquid/gas and mush/gas, while the velocity from STEP I describes better the interface solid/gas.

- The fifth step is the incremental mass correction method for metal domain. At each time increment, the current metal mass can be calculated by $m^M = \int_{\Omega} \mathcal{H}^M(\varphi) \langle \rho \rangle^M dV$, where $\langle \rho \rangle^M = g^l \langle \rho \rangle^l + g^s \langle \rho \rangle^s$ denotes the average metal density. The current mass error can be defined as $\delta m_{err} = m^M - m^{theo}$, where m^{theo} denotes the known theoretical metal mass at the considered instant. This mass error is corrected by adjusting the position of a restricted part Γ_{corr} of the metal/gas interface Γ by a uniform distance δ through modifying the distance function φ as follows in the neighborhood of Γ_{corr} :

$$\begin{cases} \delta = \frac{\delta m_{err}}{\int_{\Gamma_{corr}} \langle \rho \rangle^M dS} \\ \varphi^{new} = \varphi^{old} - H(T - T_S) \delta \end{cases} \quad (53)$$

The second equation expresses that for any node of the whole domain having a temperature above the solidus, the value of its level set function φ is decreased by the correction distance δ . In other words, the restricted part Γ_{corr} consists of the union of the mush/gas and liquid/gas interfaces.

- The sixth step is the mixing of material properties, according to the value of the level set function.
- The seventh step is a possible adaptive remeshing, guided either by directional error estimation for complex cases involving adaptation of different fields, as initially proposed by Coupez [30], or more simply by formulae based on φ values (for instance to define a coarse mesh size in the gas domain).

3 Simulation results

3.1 Validation: 1D directional solidification test case

The objective of the test detailed hereafter is to illustrate, on a simple solidification case, the proposed two-step resolution scheme. In particular it aims at showing the complementarity, but also the differences, between the solutions provided by each of the two steps: STEP I and STEP II. In order to check the correct implementation of the two-step scheme, this validation test is one-dimensional and the temperature evolution is imposed. Based on these hypotheses, a reference analytical solution can be produced and is used for model validation.

3.1.1 Model description

The test consists of the solidification of a 3D parallelepiped ingot under imposed cooling history. The geometry of the test case is shown in Fig. 3a. The solidification problem is made one-dimensional by prescribing a vertical temperature profile at any instant. Over the whole domain, a constant vertical temperature gradient G is applied, together with a constant cooling rate R . The isotherms are those defined by horizontal planes that moves at constant velocity equal to R/G , the initial temperature at the bottom surface being fixed to T_0^{bot} . The thermal dilatation of solid and liquid phases is considered with constant dilatation coefficients β^s and β^l , respectively. The densities in metal thus follow:

$$\rho^s(z, t) = \rho_s(1 - \beta^s(T(z, t) - T_s)) \quad (54)$$

$$\rho^l(z, t) = \rho_L(1 - \beta^l(T(z, t) - T_L)) \quad (55)$$

In the specific context of this validation test, the solidification path is considered in an oversimplified form, assuming that the volume fraction of the phases evolves linearly with temperature in the solidification interval:

$$g^s = \frac{T_L - T(z, t)}{T_L - T_s} \quad \text{and} \quad g^l = \frac{T(z, t) - T_s}{T_L - T_s} \quad (56)$$

In addition, in STEP I, both gas and metal (whatever its state for the latter) are considered as purely Newtonian fluids, with a fixed viscosity of $100 \text{ Pa} \cdot \text{s}$. This is simply achieved by choosing a very low critical temperature, T_C , and adequate parameters for the TVP model. For STEP II, viscosities in both

domains are differentiated and closer in magnitude to values reported in literature: the dynamic viscosities of gas and liquid metal are respectively equal to 10^{-5} Pa · s and 5×10^{-3} Pa · s. Gas density is artificially augmented, in order to keep a stable solution of velocity at the metal/gas boundary. Such an assumption is obviously not physical but it is justified in the context of a case test as it has no influence on the solidification process in metal. Values of all parameters mentioned above are summarized in Table 2.

No filling stage is considered so at zero time the bottom domain is filled with metal at rest up to position $z = 40$ mm, the rest being filled by gas. The corresponding initial mesh is shown in Fig. 3b. It is generated based on the signed distance function as defined in Eq. (1). An isotropic mesh with size 1 mm is used outside a refined zone designed at the metal/gas boundary, as observed in Fig. 3b. Through the level set transition zone of total thickness 2ε , an anisotropic mesh is used, with size 0.1 mm in the vertical direction. In addition, an extra-transition zone of thickness 1mm is defined at each side of level set transition zone, with mesh size varying from 0.1mm to 1mm in the vertical direction, in order to smooth the transition between the level set transition zone and the outside isotropic mesh zone.

As for the boundary conditions for STEP I and STEP II, the bottom horizontal surface is considered as sticking, the upper horizontal surface is considered as a free surface, and pure sliding conditions are applied to all other surfaces.

3.1.2 Analytical solution

The temperature field is known as a function of time t and vertical coordinate z , $T(z, t)$:

$$T(z, t) = T_0^{bot} + Rt + Gz \quad (57)$$

In the following, we consider an instant t such that solid, mushy and liquid zones coexist in the metal domain with solidus (T_S) and liquidus (T_L) isotherms being respectively at height z_S and z_L (Fig. 3a). In addition, the position of the free surface, $z_{interface}$, can be deduced from a simple calculation below this interface based on total metal mass conservation, considering the density of solid ($z < z_S$), mushy ($z_S < z < z_L$) and liquid ($z_L < z$) domains.

In the solid-oriented resolution, given the above assumptions, the motion of the metal and of the gas is exclusively governed by thermal dilatation. Indeed, considering Eq. (24), elasticity can be ignored due to the extremely low critical temperature that has been chosen for this case, it can be seen that the solution velocity field \mathbf{v}_I at the considered time t should satisfy the condition:

$$\nabla \cdot \mathbf{v}_I = \text{tr}(\dot{\boldsymbol{\varepsilon}}) = \text{tr}(\dot{\boldsymbol{\varepsilon}}_{th}) = -\frac{1}{\rho} \frac{d\rho}{dt} \quad (58)$$

Considering the assumptions formulated in Section 2.2.1 regarding the expression of the density ρ in STEP I (Eq. (20)), the solution velocity field \mathbf{v}_I should fulfil the following conditions:

$$\text{STEP I: } \begin{cases} \nabla \cdot \mathbf{v}_I = -\frac{1}{\rho^s} \frac{d\rho^s}{dt} & \text{in solid} \\ \nabla \cdot \mathbf{v}_I = -\frac{1}{\rho^s} \left(\frac{\partial \rho^s}{\partial t} + \mathbf{v}_I \cdot \nabla \rho^s \right) & \text{in mush and liquid} \\ \nabla \cdot \mathbf{v}_I = 0 & \text{in gas} \\ \mathbf{v}_I(z=0) = 0 \text{ and continuity of } \mathbf{v}_I \text{ at solidus and free surface} \end{cases} \quad (59)$$

In the mush and in the liquid zone, the transport term of $\mathbf{v}_I \cdot \nabla \rho^s$ is neglected in the simulation. This is justified as it remains very small compared to the time derivative of solid density. The system described by Eq. (59) has an explicit solution:

$$\mathbf{v}_I = \begin{cases} \frac{\beta^s R z}{1 - \beta^s G(z - z_S)} & \text{in solid} \\ \beta^s R z_S - \frac{R}{G} \ln(1 - \beta^s G(z - z_S)) & \text{in mush and in liquid} \\ \beta^s R z_S - \frac{R}{G} \ln(1 - \beta^s G(z_{interface} - z_S)) & \text{in gas} \end{cases} \quad (60)$$

Similarly, regarding STEP II and considering the sole Eq. (43), the velocity field \mathbf{v}_{II} can be resolved through the following system of equations, with consideration of solidification shrinkage in the solidification interval:

$$\text{STEP II: } \begin{cases} \mathbf{v}_{II} = \mathbf{v}_I & \text{in solid} \\ \nabla \cdot \mathbf{v}_{II} = -\frac{1}{\rho^l} \left(\frac{\partial (g^s \rho^s + g^l \rho^l)}{\partial t} + \mathbf{v}_{II} \cdot \nabla \rho^l + \nabla \cdot (g^s \rho^s \mathbf{v}_I) \right) & \text{in mush} \\ \nabla \cdot \mathbf{v}_{II} = -\frac{1}{\rho^l} \left(\frac{\partial \rho^l}{\partial t} + \mathbf{v}_{II} \cdot \nabla \rho^l \right) & \text{in liquid} \\ \nabla \cdot \mathbf{v}_{II} = 0 & \text{in gas} \\ \mathbf{v}_{II}(z=0) = 0 \text{ and continuity of } \mathbf{v}_{II} \text{ at solidus, liquidus and free surface} \end{cases} \quad (61)$$

The system described in Eq. (61) does not have an explicit solution in the mushy zone due to the extra divergence term involving the solid velocity resulting from STEP I. However, a numerical solution can be easily obtained by resolving a differential equation.

The preceding resolutions can consequently be extended to the situation where no mushy zone or no fully solid region have formed yet, providing the full analytical solution for comparison with a numerical simulation.

3.1.3 Results of numerical simulation and comparison

Fig. 4 shows the reference analytical solution and the simulation results, for both STEP I and STEP II, at times 0.05 s, 0.3 s, 0.9 s and 1.2 s. Excellent agreement is found. In the mushy zone, after STEP II, the solidification shrinkage and thermal dilatation of both the solid and liquid phases are accounted for, while STEP I considers only thermal dilatation of the solid phase. For both STEP I and STEP II, velocity in the gas domain is constant due to its incompressibility and also equal to the velocity of last liquid phase.

At time 0.05 s, the solidification has not yet started, the metal is still at fully liquid state (Fig. 4a). Velocity in the liquid sub-domain is simply due to the thermal dilatation, for both STEP I and STEP II. In the gas domain, the velocity is constant due to the incompressibility of the gas. Note that, due to the two-step scheme, only the velocity at the end of STEP II is meaningful.

At time 0.3 s, solidification has started as revealed by the presence of a mushy domain but no fully solid region has yet formed in the metal domain (Fig. 4b). As expected, there is a uniform gradient of v_I in the mush and in the liquid, and a zero gradient in the gas. Regarding v_{II} in the liquid, its gradient is half the one of v_I because β^l is twice lower than β^s . Conversely, in the mush, the gradient of v_{II} is higher due to solidification shrinkage. This solidification shrinkage consequently explains the large differences observed in the magnitude of the v_I and v_{II} velocity fields.

At time 0.9 s and 1.2 s, a full solid region is present in the lower part of the metal sub-domain (Fig. 4c) while at the latter case (Fig. 4d) the fully liquid metal region disappears and the mushy zone is in contact with the air domain. The trend is exactly the same as for 0.3 s with, in addition, $v_{II} = v_I$ in the solid region, thus verifying application of the Dirichlet boundary condition applied for STEP II. According to the assumptions, the velocity gradient is thus the same as the one found in the mushy zone for v_I .

Small differences exist between the analytical reference solution and the numerical simulation. They are mainly due to mesh discretization, especially in Fig. 4b and Fig. 4d for STEP II. In fact, mesh is locally not fine enough to capture the transition between the mushy zone and the liquid sub-domain or gas domain. In total, the maximum relative error on velocities is 0.55% at time 0.05 s, 2.45% at time 0.3 s, 0.66% at time 0.9 s and 3.96% at time 1.2 s expressing a very good quantitative agreement. The present test case thus demonstrates the capacity of the partitioned two-step algorithm for predicting velocity fields in both the solid and the liquid regions.

3.2 Application to ingot filling and cooling

A more practical and relevant application is proposed hereafter, in the context of ingot casting process, considering realistic material properties. This constitutes a preliminary step to future applications of the developed model to cases of industrial interest. In particular, it intends to illustrate the added value of the proposed partitioned solution scheme, considering stages associated to filling and cooling as encountered in industry. A simple parallelepiped geometry (Fig. 5a) is considered. Liquid steel enters through the bottom inlet at prescribed temperature T_{fill} and velocity v_{fill} . Gas can flow in and out

through the upper surface. Heat is extracted from the metal through the sole right-hand lateral surface using a convection-type expression for heat flux density, $q = h_T(T - T_{ext})$, where the heat transfer coefficient h_T and the external temperature T_{ext} are constant. The metal is supposed to slide along surrounding surfaces and to stick on the bottom surface except at the liquid inlet surface. The same mechanical boundary conditions are applied for \mathbf{v}_I and \mathbf{v}_{II} for STEP I and STEP II. A symmetry plane is defined at the left-hand surface and the problem is planar (even if simulations are performed in 3D). All boundary conditions are summarized in Fig. 5a.

The initial mesh is defined in Fig. 5b, with an adapted isotropic mesh in the bottom metal domain and coarse mesh in the gas domain. This initial mesh is defined with a simple adaptive meshing computation based on directional error estimator. This latter makes use of four different fields: the smoothed Heaviside function, \mathcal{H}^M , the velocity field from STEP II, \mathbf{v}_{II} , the temperature field, T , and the von Mises equivalent stress from STEP I, $\bar{\sigma}$. The chemical composition of the 40CrMnMoS8-6 steel grade is provided in Table 3. Thermodynamic properties of the material are computed with a thermodynamic package that makes use of database TCFE6 [31] assuming full equilibrium following the level rule. As no macrosegregation is considered in the present model, nominal composition is used for any temperature. For the sake of simplicity, solid behavior over the mushy zone is slightly simplified, with the mechanical coherency fraction g_{coh}^l equal to zero. Properties of material and main parameters are summarized in Table 4 and in the Appendix.

3.2.1 Ingot filling

Figs. 6(a-c) illustrate the filling stage of the ingot. The zero-isovalue of the level set function representing the metal/gas interface is shown with the thick green line, as observed in Fig. 6a. As filling proceeds, the position of the free surface rises until the end of filling at time 2.8 s shown in Fig. 6c. At time 1.0 s, as shown in Fig. 6b, a mushy zone is already formed, with the liquidus (white line) isotherm near the bottom vertical right-hand surface that defines the metal/mold boundary. In the mushy zone, the liquid flow penetrates only the uppermost layers below the liquidus isotherm due to the rapid decrease of permeability with the liquid fraction. In the bulk liquid zone, the liquid flow moves freely, essentially under the effect of the filling velocity, carrying the cooled down liquid from the surface to interiors. A small fully solidified layer is already present at time 2.8 s as shown in Fig. 6c. It is located between the solidus isotherm (the closest white line to the metal/mold boundary) at the vicinity of the right-hand bottom corner. The stress formed in this thin solid shell can reach about 8 MPa at the end of the filling stage. Fig. 6d shows the adapted mesh at time 2.8 s as a result of the current magnitude of fields considered in the metric computation. A fine adapted mesh is locally generated to capture the variation of liquid flow. The mesh is also refined in the solid shell in order to get more precise information about stress formed in this critical zone. In addition, the mesh is adapted in an anisotropic way to the smoothed Heaviside function in order to maintain a smooth transition between gas and metal sub-domains. As the gas sub-domain is not a zone of interest in the present

approach, a coarse mesh is imposed to reduce computation time. A discussion on computation time can be found hereafter in Section 4.1.

3.2.2 Ingot cooling

After filling, the ingot is cooled down under the same heat extraction conditions. The fluid flow and stresses in the metal domain are shown in Fig. 7 at various later times selected in the same simulation as Fig. 6. The gas sub-domain is removed for a better view of the metal/gas boundary. It can be seen in Fig. 7a that liquid flow at 20 s reaching up to $13 \text{ mm} \cdot \text{s}^{-1}$ is present mainly in the bulk liquid zone and in the part of the mushy zone where liquid fraction is high. At the same time, simulation gives access to stresses in the solidified zone where calculated equivalent stress reaches 120 MPa. However, when the bulk liquid zone is reduced and the mushy zone is dominant at time 60 s (Fig. 7b), the liquid flow is considerably slowed down, with values of the order of $2 \text{ mm} \cdot \text{s}^{-1}$. The stress in the solid region continues to increase near the right-hand surface. As a result of the thermal effect, stress in the solid can reach about 600 MPa. Note that the velocity field at the metal/gas boundary also reaches about $2 \text{ mm} \cdot \text{s}^{-1}$ at the same time. In fact, properties like density and viscosity are mixed between gas and metal. Material in the level set transition zone, on the side of gas domain behaves like a fluid. This induces fluid flow due to the gravity term, especially near the area where borders of mushy zone, solid zone and gas sub-domain meet and locally the metal/interface forms a descending shape. It may become problematic when the mushy/gas boundary reaches a critically small value as shown in Fig. 7c at time 96 s. In this situation, the incremental correction distance δ turns to be excessive because of the very small correction surface and the updating of the mushy/gas interface with fluid flow derived from STEP II becomes difficult. Thus, only STEP I is performed after 96 s, the metal/gas boundary being then updated with velocity from STEP I and incremental mass error being corrected over the whole metal/gas boundary. Figs. 7(d,e) present respectively the equivalent stress field and temperature field at time 120 s. All metal is now solidified with a highest temperature of 1300 °C, about 130 °C below the solidus temperature. The maximum of the equivalent stress reaches a value higher than 1000 MPa near the right-hand cooling surface. Such a high value is commented in the next paragraph. Fig. 7f presents the final adapted mesh at time 120 s. It shows that the error estimator mesh adaptation method gives satisfying results. At this final cooling stage, smooth variations of the gradients of the temperature and velocity fields are computed. Consequently, the mesh is adapted almost exclusively on the stress field and with the smoothed Heaviside function at the metal/gas boundary.

Stress profiles computed on the domain front surface at height $z = 20 \text{ mm}$ are drawn in Fig. 8 at four different times. As shown, stress remains very low far from the cooling surface so the representation in Fig. 8 is limited to a region that extends only 20 mm inward the metal from the cooling surface, e.g. $20 \text{ mm} < x < 40 \text{ mm}$. Fig. 8(a-c) reveal that the stress component in the x -direction is relatively small compared to the components in the two other directions. This evolution is explained by the fact that solidification proceeds in the x -direction, mainly deriving a $\dot{\epsilon}_{th}$ contribution that corresponds to the highest temperature gradient. It contributes little to stress generation. As for stress in the y -direction at

the surface of the simulation domain, tension is observed at all times. One should remind that according to the planar type boundary conditions, the deformation along the y -direction cannot be accommodated and the associated stress component continuously increases with time, reaching almost 700 MPa at 120 s in Fig. 8d. This regular increase of σ_{yy} is responsible for the high values of $\bar{\sigma}$ that were noticed in Fig. 7(c-d). For stress in the z -direction, the solid shell is firstly loaded in tension at the early stage of cooling at 10 s. Several millimeters away from the mold surface, compression is found, expressing the necessary mechanical equilibrium along the vertical direction. This profile is progressively inverted and, at 120 s, the opposite situation is found with compression of the outer skin and tension of the inner product. This can be explained by the fact that at the early stage, when solid shell thickness is still small, the cooling rate of the solid shell is higher at the surface than in depth, due to the release of the latent heat in the mushy zone. The heat flux extracted from the cooling surface decreases continuously due to the Fourier-type condition limit. At a later stage, when the solid shell is thick enough, the latent heat release has little influence on the analyzed 20 mm solid shell near the cooling surface. Therefore the cooling rate becomes higher in depth than at the cooling surface.

4 Discussions

Beyond the above demonstration of the partitioned two-step solution algorithm, a discussion concerning simulation time and possible improvement directions is given hereafter.

4.1 Computation time analysis

The computation time is investigated for the academic ingot casting case previously analyzed. The simulation is performed on 28 Intel[®] cores with a computation time of 67 h until the process time 96 s with a full two-step algorithm and 12 h from 96 s to 120 s with only STEP I performed. The time consumption of the different steps of the algorithm is detailed in Table 5 until time 96 s, in order to analysis the computation efficiency of the full two-step algorithm before complete solidification. Results show that the remeshing step and level set reset step take considerable resources representing respectively 27 % and 31 % of the total computation time. The remeshing step is performed at each time increment in the present simulation. Frequent remeshing is indeed necessary in order to capture the evolving metal/gas boundary during filling. However the metal/gas boundary is later on relatively stable as it evolves slowly at each increment during ingot cooling. Frequent remeshing becomes unnecessary. Management of the remeshing frequency thus becomes an interesting optimization approach to reduce the computing time.

The level set reset step has also an important cost despite the already optimized direct reinitialization method. In the present algorithm, a complete reconstruction of the distance function is performed at each level set reset step. However, only distance over an artificial interface thickness $[-\varepsilon, +\varepsilon]$ around the zero-level set interface is valuable so as to calculate the smoothed Heaviside function. An option would thus be to reinitiate the distance function only through a certain thickness around the zero-level set surface, not over the complete domain.

Finally, the thermal resolution and the mechanical resolutions STEP I and STEP II represent 39 % of the total computation time, of which STEP I takes about 58 % of the cost. This is due to the fact that the resolution of STEP I is non-linear while STEP II is linear. Therefore, another possible option to save computation time is the desynchronization of STEP I and STEP II, which will be discussed in the following section.

4.2 Desynchronization of STEP I and STEP II

STEP I and STEP II are performed once in each time increment. However, there is a real interest in desynchronizing the two resolutions. Indeed, in many casting applications, the solid-oriented resolutions could be performed less often than the liquid-oriented ones, because of different characteristic time scales. Moreover, influence of STEP I to STEP II is much smaller than that of STEP II to STEP I. The direct momentum transfer from solid movement to fluid flow remains small compared to the influence of STEP II to STEP I via the heat and mass transfer by fluid flow. For instance, with a STEP I performed only once for each two time increments, computation time can be reduced by at least 10 % and even more if optimization is expected by combination of the remeshing and level set steps.

4.3 Mass conservation of the metal domain

In the present partitioned algorithm, mass conservation problem is observed. Fig. 9 shows the time evolution of the deviation of the total mass from its value over the first 96 s of the simulation. Without mass correction, the total metal mass globally decreases until about time 50 s and then continuously increases until 96 s. The relative mass error reaches a maximum value of about 1.3 %. While limited, this mass loss must be corrected. Its origin essentially lies in the use of the level set method in the context of a solidification process. The velocity field used to transport the metal/gas interface is not exact, it is an approximation obtained by considering a transition zone around this interface, with mixed material properties. As a consequence, the capture of the motion of the metal/gas interface by the level set method may result in non-conservation of metal mass. Certainly there exist other issues like finite element discretization, time discretization, and mesh adaptation, which drive also the non-conservation of the total metal mass. Therefore, it was proposed to implement an incremental mass correction method in the present algorithm, as described in Section 2.4.

The mass correction method was tested in the previous ingot casting simulation. When mass correction method is applied, the total metal mass is well conserved. One should consider that, with the present methodology, the correction of the level set position at each time increment remains of the order of few μm . This is 1000 times lower than the artificial level set thickness used in the simulation. Hence, application of this correction method in the partitioned resolution algorithm has almost no influence on the calculated fluid flow and solid stress, while keeping a good metal mass conservation.

4.4 Compressive behavior of the mushy zone

In the STEP I solution, the selected constitutive model for metal in the mushy state consists of an extrapolation of the constitutive model of the fully solid metal at higher temperatures. Currently, this is

achieved by simply extending the temperature dependence of the constitutive parameters, such as K and m . Possible alternatives could be made available in future developments to better capture the movement of the columnar dendritic structure in the mush. An interesting approach would consist in introducing a dependence of these constitutive parameters with respect to the solid fraction, together with compressible viscoplasticity by use of a compressible viscoplastic potential. This was actually done by Bellet and coworkers in a 2D finite element model with a concurrent resolution (in a single non-linear set of equations) of liquid velocity, solid velocity and liquid pressure for the study of liquid/metal interactions in the mushy zones [32,33]. In this approach the constitutive model for the solid phase was inspired from the work of Suéry and coworkers [34,35]. A similar approach has been developed by Ludwig *et al.* [36] in a 2D finite volume discretization, with, in addition, the modelling of the transport and sedimentation of equiaxed grains in the melt. Beckermann and coworkers [37,38], also used a compressible viscoplastic constitutive model, but restricted their resolution to the solid phase deformation in the mushy zone, without interaction with the melt. Interest of such an extension would also lie in the possibility to make use of the intrinsic properties of each solid phase formed upon solidification. Indeed, all possible solid phases forming are made accessible thanks to tabulation of the solidification path by using a thermodynamic database. With potentially different intrinsic mechanical properties of different solid phases, averaging of the behavior of the phases would also be possible, that would then no longer depend on the total fraction of solid alone. Coupling with microsegregation models would also then be made accessible, which was shown to be crucial for the prediction of macrosegregation [39].

5 Conclusions

In this paper an original solution scheme has been proposed in view of solving concurrently solid mechanics and fluid flow in the context of the numerical modelling of solidification processes. This is a very challenging objective, because of huge differences in the order of magnitude of stress, velocities and mechanical stiffness characterizing bulk liquid regions on one hand and fully solidified regions on the other hand. Up to the knowledge of the authors, this problem had not been satisfactorily solved so far.

The model presented in this paper consists of a partitioned solution scheme. At each time increment a solid-oriented solution is performed first, followed by a liquid-oriented one. Both solution schemes are formulated in the finite element method, with a level set tracking of the moving interface between the solidifying metal and the surrounding gas. The successive resolutions are tightly coupled and operated on a common spatial discretization of the whole analysis domain: metal and gas. The first resolution – solid-oriented – is in charge of providing the velocity field, and the associated strains and stresses arising from the highly non-linear elastic-viscoplastic deformation of the solidified regions. The second resolution – liquid oriented – is in charge of providing the velocity field arising from the liquid flow, governed by Navier-Stokes equations with Darcy damping in the mushy zones. A detailed presentation of the sets of equations, and of their weak forms with level set formulation has been given.

The two-step solver was first validated in the context of directional solidification: the proposed algorithm provided solutions in excellent agreement with reference solutions. Then it was applied to the context of ingot casting. It was demonstrated that the proposed scheme was able to solve the entire process: first the filling stage, during which stress and strains can be captured in the fine solid skin formed, together with the forced fluid flow; second the cooling stage after filling, with stress and strains in bulk solid regions, together with thermally convected flow in bulk liquid regions and mushy zone. The accurate capture of these phenomena was achieved thanks to continuous remeshing all along the process simulation, the local density of the mesh being determined by a multi-objective metric tensor.

The limitations of the present approach essentially lie in the treatment of contact with molds. At present, there is a strong hypothesis of non-departure of the solidified skin from the mold surface. In a short term future, this should be taken into account by implementing a penalty treatment of the non-penetration condition.

The main perspectives of this work are twofold. First, besides the ingot casting application, the proposed solution will be extended to the continuous casting process. This will require the implementation of an Arbitrary Lagrangian-Eulerian (ALE) scheme, using mobile meshes in the interval between two successive remeshing steps. Second, the coupling of the proposed two-step solver with the solution of chemical species conservation, gas flow and grain motion will give access to enhanced predictions of macrosegregation due to thermosolutal convection, shrinkage flow, transport of equiaxed grains [40] and thermomechanical deformation of solid and mushy regions. Together with the demonstrated efficient coupling of thermohydraulic and thermomechanical effects on heat and total mass transport, this is expected to provide engineers with radically new simulation methods and packages for optimization of industrial casting processes.

Acknowledgements

This work was funded by the European Space Agency – ESTEC (Netherlands) under the projects CCEMLCC (Grant AO-2004-017) and industrial partners ARCELORMITTAL Maizières Research, APERAM ALLOYS IMPHY and INDUSTRIEL.

References

- [1] M. Heil, A. L. Hazel, J. Boyle, *Solvers for large-displacement fluid-structure interaction problems: segregated versus monolithic approaches*, *Comput. Mech.* 43 (2008) 91-101
- [2] M. Bellet, V. D. Fachinotti, ALE method for solidification modelling, *Computer Methods in Applied Mechanics and Engineering* 193, 39-41 (2004) 4355-4381
- [3] M. Bellet, O. Jaouen, I. Poitroult, An ALE-FEM approach to the thermomechanics of solidification processes with application to the prediction of pipe shrinkage, *International Journal of Numerical Methods for Heat and Fluid Flow* 15, 2-3 (2005) 120-142
- [4] A. Saad, Ch.-A. Gandin, M. Bellet, Temperature-based energy solver coupled with tabulated thermodynamic properties - Application to the prediction of macrosegregation in multicomponent alloys, *Computational Materials Science* 99 (2015) 221-231
- [5] S. Osher, J.A. Sethian, Fronts Propagating with Curvature Dependent Speed: Algorithms Based on Hamilton-Jacobi Formulations, *Journal of Computational Physics* 79 (1988) 12-49
- [6] J. A. Sethian, P. Smereka, Level-Set methods for fluid interfaces, *Annual Review of Fluid Mechanics*, 35 (2003) 341-372
- [7] A. Saad, Ch.-A. Gandin, M. Bellet, T. Volkman, D. Herlach, Simulation of shrinkage-induced macrosegregation in a multicomponent alloy during reduced-gravity solidification, *TMS2016 Annual Meeting Supplemental Proceedings* (2016) 35-42
- [8] M. Shakoor, B. Scholtes, P.-O. Bouchard, M. Bernacki, An efficient and parallel level set reinitialization method – Application to micromechanics and microstructural evolutions, *Applied Mathematical Modelling* 39 (2015) 7291-7302
- [9] J. A. Dantzig, M. Rappaz, *Solidification*, EPFL Press, Lausanne (2009)
- [10] P. Vicente-Hernandez, *Vers une approche thermomécanique du procédé de fonderie: caractérisation rhéologique et microstructurale d'alliages métalliques à l'état semi-solide (Towards a thermomechanical approach of casting processes: rheological and microstructural characterization of metallic alloys in the semi-solid state)*, Ph.D. Thesis (in French), École Nationale Supérieure des Mines de Paris, 1994
- [11] M. Bellet, B.G. Thomas, Solidification macroprocesses (Thermal - Mechanical modeling of stress, distortion and hot tearing), in *Materials Processing Handbook*, J.R. Groza, J.F. Shackelford, E.J. Lavernia and M.T. Powers (eds.), Chapter 27, CRC Press, Taylor and Francis (2007) 27-1 – 27-26
- [12] B. G. Thomas, M. Bellet, Modeling of stress, distortions and hot tearing, in *ASM Handbook Volume 15: Casting*, American Society of Metals (2008) Division 4: Modeling and Analysis of Casting Processes, 449-461
- [13] D. N. Arnold, F. Brezzi, M. Fortin, A stable finite element for Stokes equation, *Calcolo* 21 (1984) 337-352
- [14] P. I. Babuška, Error-bounds for finite element method, *Numerische Mathematik* 16, 4 (1971) 322-333
- [15] F. Brezzi, On the existence, uniqueness and approximation of saddle-point problems arising from Lagrangian multipliers, *ESAIM: Mathematical Modelling and Numerical Analysis-Modélisation Mathématique et Analyse Numérique* 8, R2 (1974) 129-151
- [16] M. Bellet, Optimisation du changement de variable sur la pression pour les formulations éléments finis vitesse-pression de Theracast® et R2sol, Technical note (in French), Mines ParisTech – CEMEF (2003), 4 pages, internal communication
- [17] S. Ganesan, D. R. Poirier, Conservation of Mass and Momentum for the Flow of Interdendritic Liquid during Solidification, *Metallurgical Transactions B* 21 (1990) 173-181
- [18] J. Ni, C. Beckermann, A Volume-Averaged Two-Phase Model for Transport phenomena during Solidification, *Metallurgical Transactions B* 22 (1991) 349-361
- [19] M. Rappaz, M. Bellet, M. Deville, *Numerical modeling in materials science and engineering*, Springer-Verlag, Berlin Heidelberg (2003)
- [20] S. Gouttebroze, Modélisation 3D par éléments finis de la macroségrégation lors de la solidification d'alliages binaires (3D finite element modeling of macrosegregation upon

- solidification of binary alloys), Ph.D. Thesis (in French), Ecole Nationale Supérieure des Mines de Paris (2005)
- [21] S. Gouttebroze, M. Bellet, H. Combeau, 3D macrosegregation simulation with anisotropic remeshing, *C. R. Mécanique* 335, 5-6 (2007) 269-279
- [22] W. G. Gray, K. O'Neill, On the general equations for flow in porous media and their reduction to Darcy's law, *Water Resources Research* 12(1976) 148-154
- [23] S. Whitaker, *Flow in Porous Media I: A theoretical derivation of Darcy's law*, *Transport in Porous Media* 1 (1986) 3-25
- [24] P. C. Carman, Fluid flow through granular beds, *Chemical Engineering Research and Design: Transactions of the Institution of Chemical Engineers Part A*, 37 (1937) 2069-2079.
- [25] M. Bellet, Modélisation thermomécanique des procédés de déformation plastique et de solidification, (Thermomechanical modeling of processes involving plastic deformation and solidification), *Mémoire d'Habilitation à Diriger des Recherches (in French)*, Université de Nice – Sophia Antipolis (2005)
- [26] T. E. Tezduyar, S. Mittal, S. E. Ray, R. Shih, Incompressible flow computations with stabilized bilinear and linear equal-order-interpolation velocity-pressure elements, *Computer Methods in Applied Mechanics and Engineering* 95 (1992) 221-242
- [27] T. E. Tezduyar, Y. Osawa, Finite element stabilization parameters computed from element matrices and vectors, *Computer Methods in Applied Mechanics and engineering* 190 (2000) 411-433
- [28] E. Hachem, Stabilized Finite Element Method for Heat Transfer and Turbulent Flows inside Industrial Furnaces, Ph.D. Thesis, Mines ParisTech (2009)
- [29] E. Hachem, B. Rivaux, T. Kloczko, H. Dignonnet, T. Coupez, Stabilized finite element method for incompressible flows with high Reynolds number, *J. Comp. Phys.* 229 (2010) 8643-8665
- [30] T. Coupez, Metric construction by length distribution tensor and edge based error for anisotropic adaptive meshing, *Journal of Computational Physics* . 230 (2011) 2391-2405
- [31] TCFE6: A thermodynamic database for different kinds of steels and Fe-based alloys. Thermo-Calc Software AB, 2010, Stockholm, SE
- [32] V. D. Fachinotti, S. Le Corre, N. Triolet, M. Bobadilla, M. Bellet, Two-phase thermo-mechanical and macrosegregation modelling of binary alloys solidification with emphasis on the secondary cooling stage of steel slab continuous casting, *Int. J. Num. Meth. Eng.* 67 (2006) 1341-1384
- [33] T. Koshikawa, M. Bellet, Ch.-A. Gandin, H. Yamamura, M. Bobadilla, Study of hot tearing during steel solidification through ingot punching test and its numerical simulation, *Metallurgical and Materials Transactions A* 47 (2016) 4053-4067
- [34] T. G. Nguyen, D. Favier, M. Suéry, Theoretical and experimental study of the isothermal mechanical behavior of alloys in the semi-solid state, *Int. J. Plasticity* 10 (1994) 663–693
- [35] C. L. Martin, D. Favier, M. Suéry, Viscoplastic behaviour of porous metallic materials saturated with liquid, Part I: constitutive equations, *Int. J. Plasticity* 13 (1997) 215 –235
- [36] A. Ludwig, A. Vakhrushev, T. Holzmann, M. Wu, A. Karicha, Two-phase modelling of equiaxed crystal sedimentation and thermomechanic stress development in the sedimented packed bed, *Proc. MCWASP XIV, 14th Int. Conf. on Modeling of Casting, Welding and Advanced Solidification Processes*, Awaji Island, Japan, 21-26 June 2015, H. Yasuda (ed.), IOP Conference Series: Materials Science and Engineering 84 (2015) 012102
- [37] C. A. Monroe, C. Beckermann, J. Klinkhammer, *Modeling of Casting, Welding, and Advanced Solidification Processes-XII*, Edited by: Steve L. Cockcroft and Daan M. Maijer, TMS (2009) 313-320
- [38] M. G. Pokorný, C.A. Monroe, C. Beckermann, Z. Zhen, N. Hort, Simulation of Stresses during Casting of Binary Magnesium-Aluminum Alloys, *Metallurgical and Materials Transactions A* 41 (2010) 3196-3207
- [39] T. Koshikawa, M. Bellet, Ch.-A. Gandin, H. Yamamura, M. Bobadilla, Experimental study and two-phase numerical modelling of macrosegregation induced by solid deformation during punch pressing of solidifying steel ingots, *Acta Materialia* 124 (2017) 513-527
- [40] T.-T.-M. Nguyen, Ch.-A. Gandin, H. Combeau, M. Založnik, M. Bellet, Finite element multi-scale modelling of chemical segregation in steel solidification taking into account the transport of equiaxed grains, *Metallurgical and material transactions A* 49 (2018) 1725-1748

Appendix

The following figures detail the physical and materials properties of the 40CrMnMoS8-6 steel grade used in the present computations.

Illustrations captions

Fig. 1. Schematic of a representative volume element in the context of solidification with (a) distribution of regions of metal and the surrounding gas, (b) the smoothed Heaviside function based on the level set method used for tracking the metal/gas boundary, (c) the parameters of the constitutive model for the metal sub-domain, (d) the Heaviside function based on a temperature parameter to distinguish the regions of metal with TEVP and TVP mechanical behaviors.

Fig. 2. Resolution scheme on a time increment.

Fig. 3. Test case for model validation with (a) geometric configuration and boundary conditions and (b) initial mesh.

Fig. 4. Vertical profiles of the vertical components of computed velocities v_I and v_{II} for the test case at time (a) 0.05 s, (b) 0.3 s, (c) 0.9 s and (d) 1.2 s with (plain lines) the analytical reference solution and (lines with symbols) the numerical simulation.

Fig. 5. Geometry of ingot case simulation with (a) initial configuration of the ingot during the filling stage and boundary conditions and (b) initial mesh. Note the non-symmetric boundary conditions along the left and right vertical walls.

Fig. 6. Snapshot of solidification simulation showing on the front surface (a-c) a time sequence of the evolution of the temperature field, T , and fluid velocity, v_{II} , in the metal sub-domain during the filling stage. Evolutions are presented at times (a) 0.1 s, (b) 1 s and (c) 2.8 s and corresponding (d) adapted mesh and (e) equivalent stress field, $\bar{\sigma}$, in a small region close to the cooling wall at time 2.8 s. The liquidus and solidus temperature isotherms are highlighted with thick white lines in (a-c) and (e), while the iso-level set value $\varphi = 0$ that represents the metal/gas boundary is highlighted in green in (a-c). Note that the left vertical wall is a symmetry plane.

Fig. 7. Time evolution of the equivalent stress field, $\bar{\sigma}$ in the metal sub-domain during the cooling stage at times (a) 20 s, (b) 60 s, (c) 96 s and (d) 120 s; corresponding (e) temperature field and (f) adapted mesh at time 120 s. Fluid velocity, v_{II} , is also shown on (a) and (b) when liquid domain is still present in ingot. The liquidus and solidus temperature isotherms are highlighted with thick white lines. The fields in the gas sub-domain are not shown.

Fig. 8. Stress components along the three directions x, y, z are plotted at different process times (a) 10 s, (b) 20 s, (c) 60 s, and (d) 120 s, along a horizontal profile at height $z = 20$ mm and $y = 2.5$ mm. Stress curves are shown only for the right part of the profile between $x = 20$ mm (ingot center) and $x = 40$ mm (right lateral wall), as they are null along the left part of the profile (liquid state).

Fig. 9. Time evolution of the relative error on metal mass conservation without and with correction.

Fig. A.1: Evolution of the liquid fraction g^l in the solidification interval

Fig. A.2: Evolution of the solid density ρ^s (until liquidus temperature) and the liquid density ρ^l (until solidus temperature) as a function of temperature.

Fig. A.3: Evolution of the specific solid enthalpy h^s and specific liquid enthalpy h^l as a function of temperature

Fig. A.4: Evolution of the solid consistency K as a function of temperature

Fig. A.5: Evolution of the solid strain rate sensibility m as a function of temperature

Fig. A.6: Evolution of the solid hardening coefficient n as a function of temperature

Fig. A.7: Evolution of the Young modulus E as a function of temperature

Fig. A.8: Evolution of the yield stress σ_Y as a function of temperature

Tables captions:

Table 1: Expressions of the different mixed properties according to the region considered.

Table 2: Values of material and numerical parameters used in unidirectional solidification test case.

Table 3: Composition of the steel grade.

Table 4: Material, simulation and numerical parameters used in ingot casting. All tabulations are provided as graphs in the Appendix.

Table 5: Distribution of the computation time for the ingot casting simulation at process time 96 s.

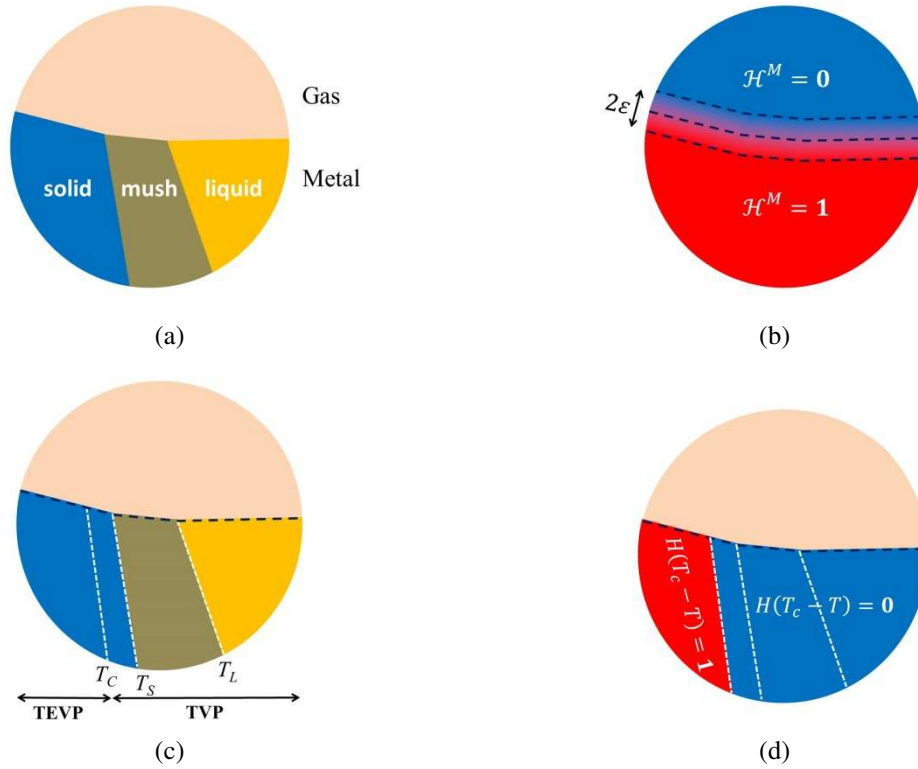


Fig. 1. Schematic of a representative volume element in the context of solidification with (a) distribution of regions of metal and the surrounding gas, (b) the smoothed Heaviside function based on the level set method used for tracking the metal/gas boundary, (c) the parameters of the constitutive model for the metal sub-domain, (d) the Heaviside function based on a temperature parameter to distinguish the regions of metal with TEVP and TVP mechanical behaviors (see main text).

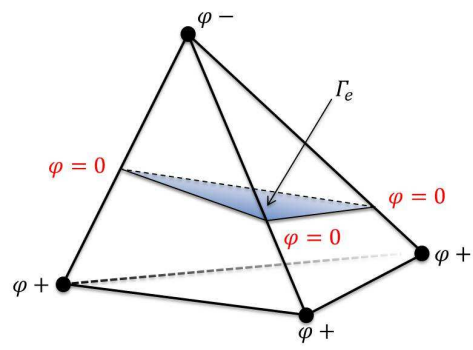


Fig. 2. Illustration of an element at interface Γ_0 with Γ_e representing the cutting interface by zero-isovalue of the level set function φ .

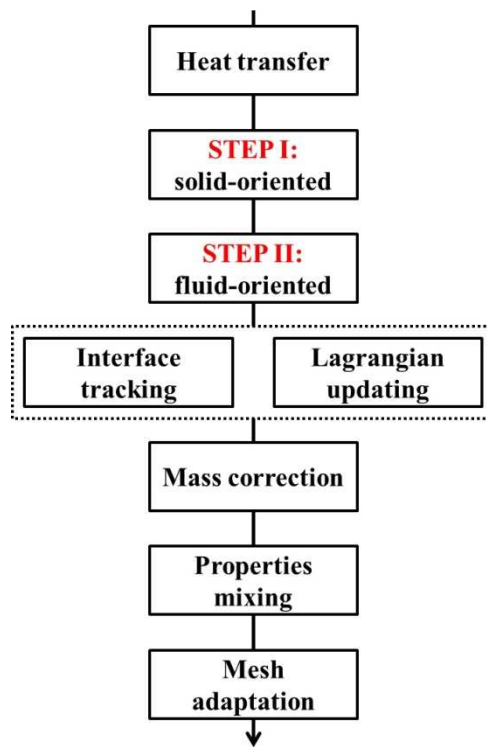
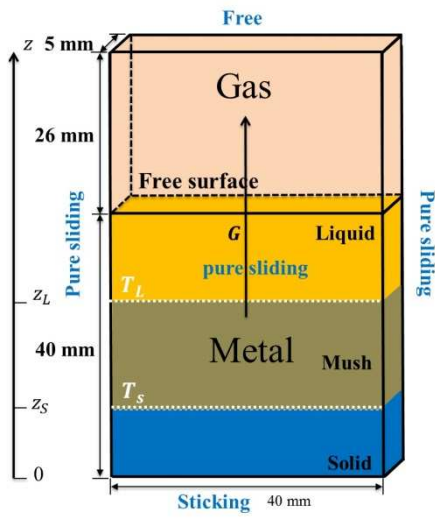
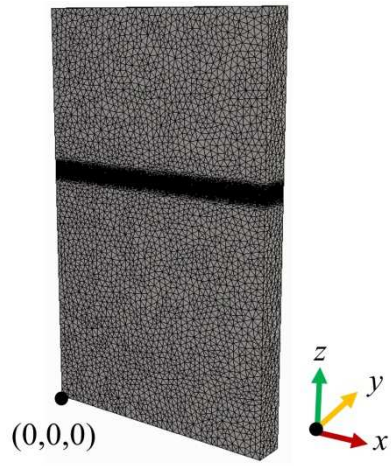


Fig. 3. Resolution scheme on a time increment.

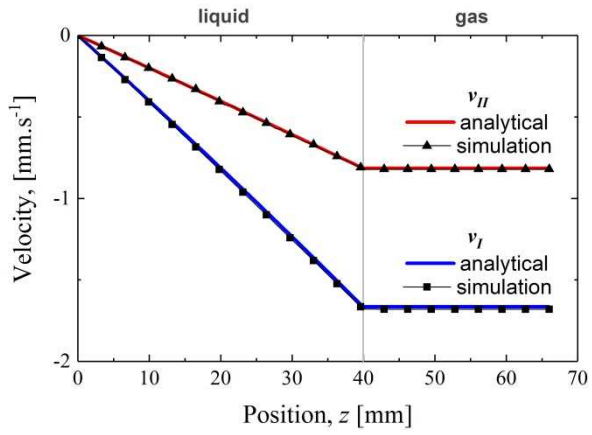


(a)

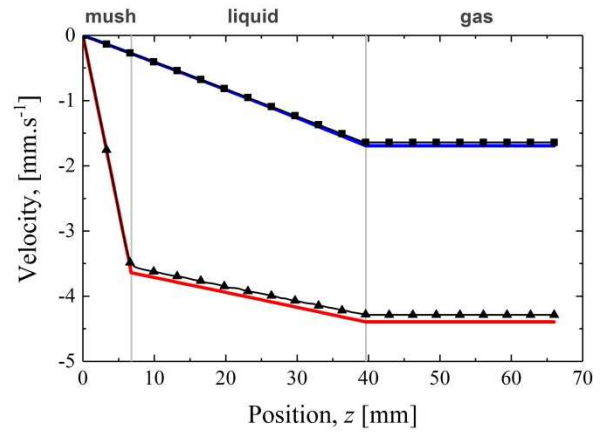


(b)

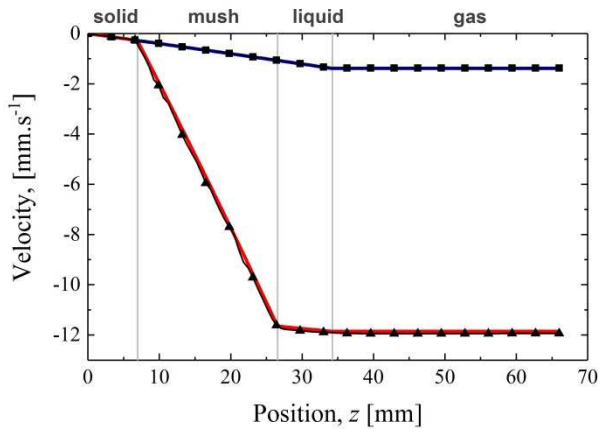
Fig. 4. Test case for model validation with (a) geometric configuration and boundary conditions and (b) initial mesh.



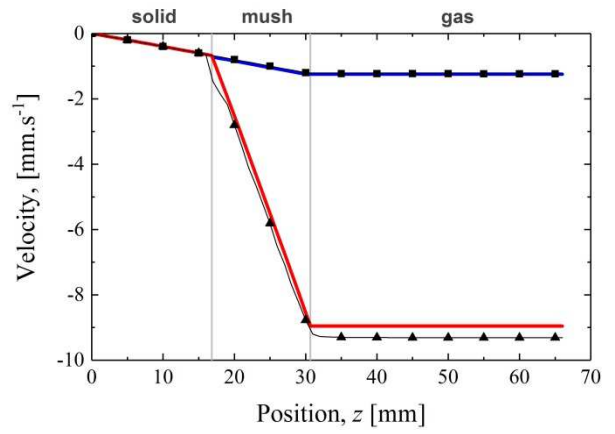
(a)



(b)



(c)



(d)

Fig. 5. Vertical profiles of the vertical components of computed velocities v_I and v_{II} for the test case at time (a) 0.05 s, (b) 0.3 s, (c) 0.9 s and (d) 1.2 s with (plain lines) the analytical reference solution and (lines with symbols) the numerical simulation.

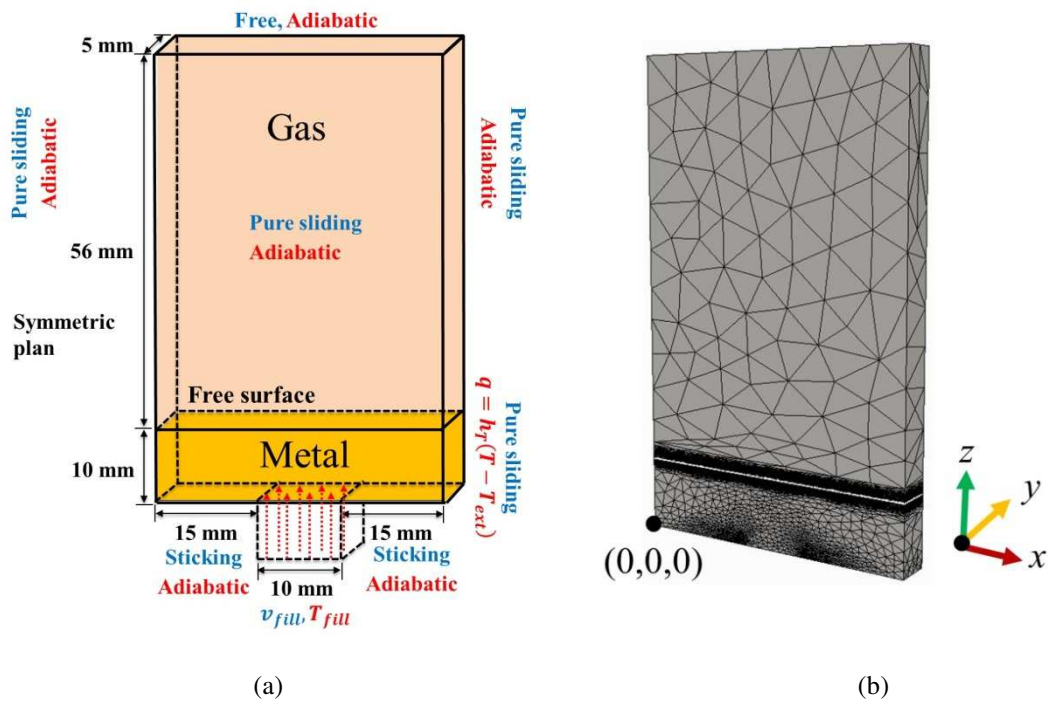


Fig. 6. Geometry of ingot case simulation with (a) initial configuration of the ingot during the filling stage and boundary conditions and (b) initial mesh.

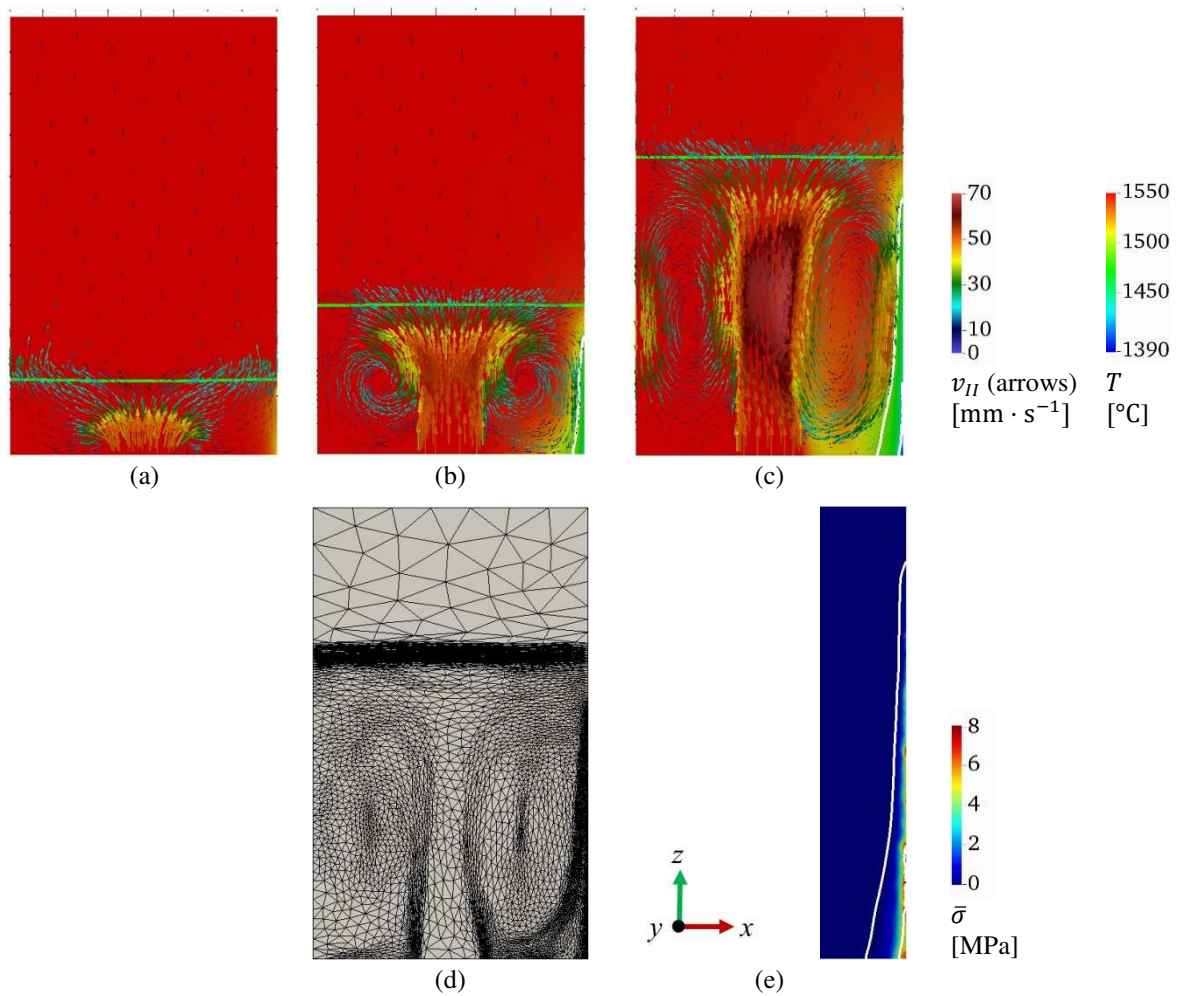


Fig. 7. Snapshot of solidification simulation showing on the front surface (a-c) a time sequence of the evolution of the temperature field, T , and fluid velocity, v_H , in the metal sub-domain during the filling stage. Evolutions are presented at times (a) 0.1 s, (b) 1 s and (c) 2.8 s and corresponding (d) adapted mesh and (e) equivalent stress field, $\bar{\sigma}$, in a small region close to the cooling wall at time 2.8 s. The liquidus and solidus temperature isotherms are highlighted with thick white lines in (a-c) and (e), while the iso-level set value $\varphi = 0$ that represents the metal/gas boundary is highlighted in green in (a-c).

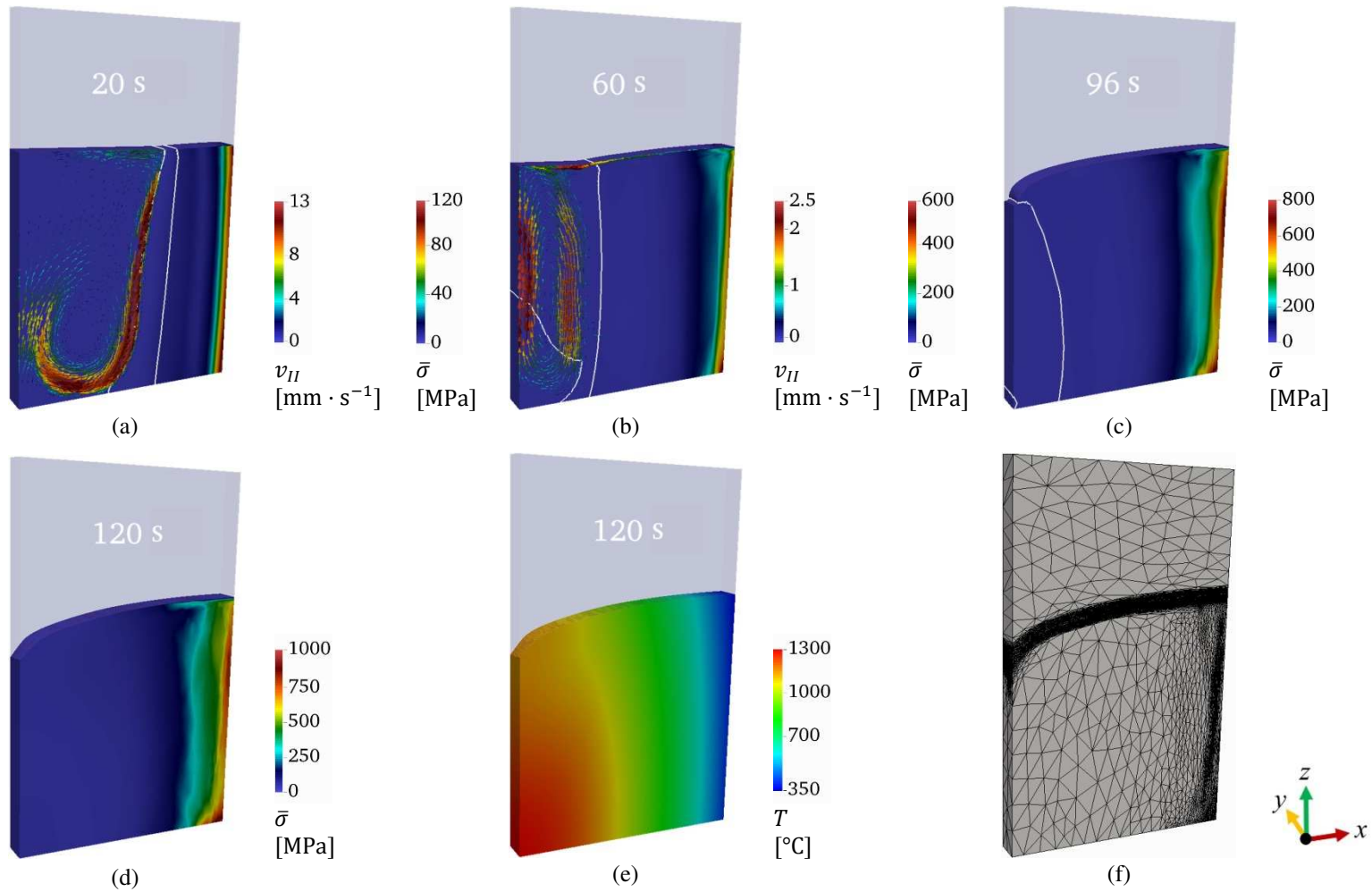


Fig. 8. Time evolution of the equivalent stress field, $\bar{\sigma}$ in the metal sub-domain during the cooling stage at times (a) 20 s, (b) 60 s, (c) 96 s and (d) 120 s; corresponding (e) temperature field and (f) adapted mesh at time 120 s. Fluid velocity, v_{II} , is also shown on (a) and (b) when liquid domain is still present in ingot. The liquidus and solidus temperature isotherms are highlighted with thick white lines. The fields in the gas sub-domain are not shown.

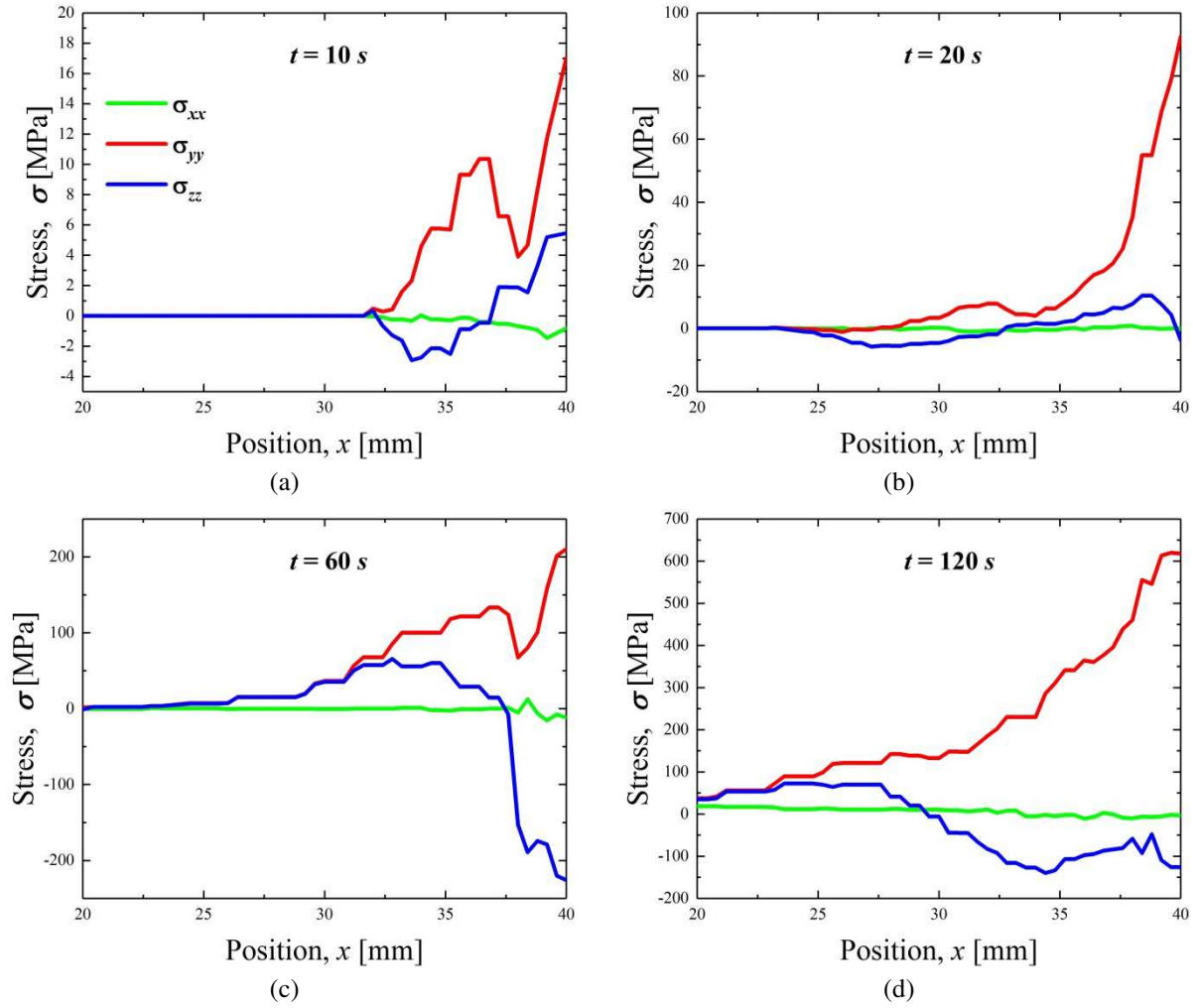


Fig. 9. Stress in the three principal directions x , y , z at 20 mm height of the ingot, respectively at time t equal to (a) 10 s, (b) 20 s, (c) 60 s and (d) 120 s. Stress is plotted in the layer of 20 mm at cooling surface.

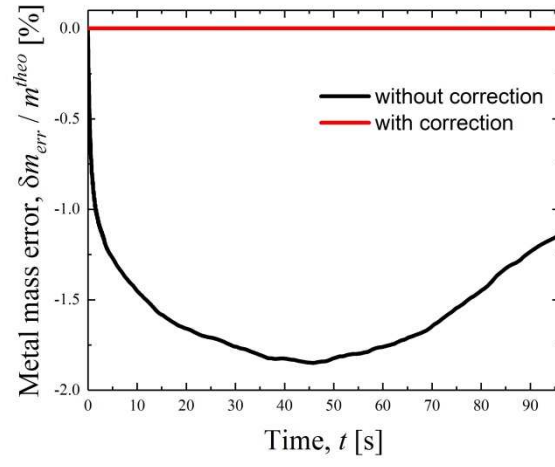


Fig. 10. Time evolution of the relative error on metal mass conservation without and with correction.

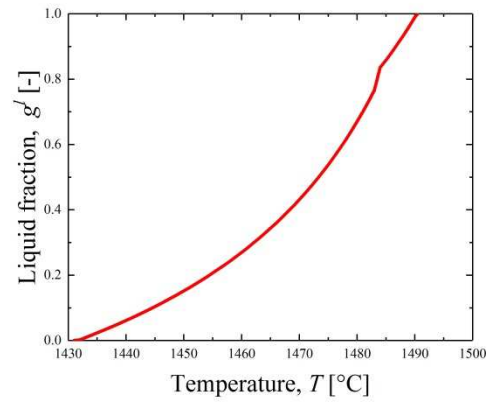


Fig. A.1: Evolution of the liquid fraction g^l in the solidification interval

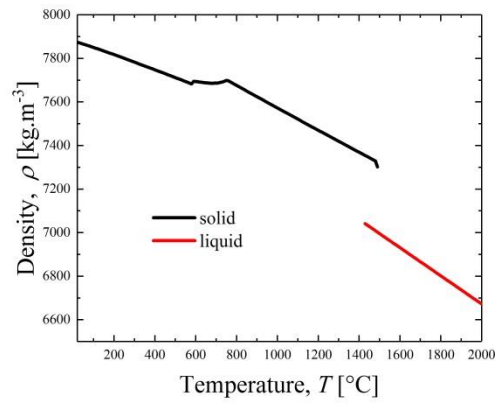


Fig. A.2: Evolution of the solid density ρ^s (until liquidus temperature) and the liquid density ρ^l (until solidus temperature) as a function of temperature.

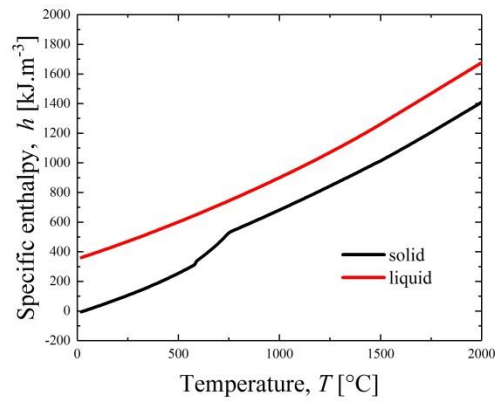


Fig. A.3: Evolution of the specific solid enthalpy h^s and specific liquid enthalpy h^l as a function of temperature

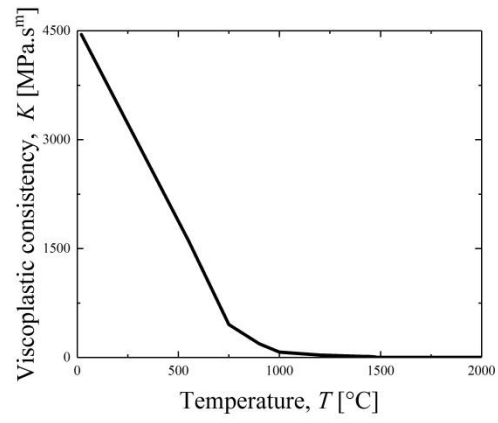


Fig. A.4: Evolution of the solid consistency K as a function of temperature

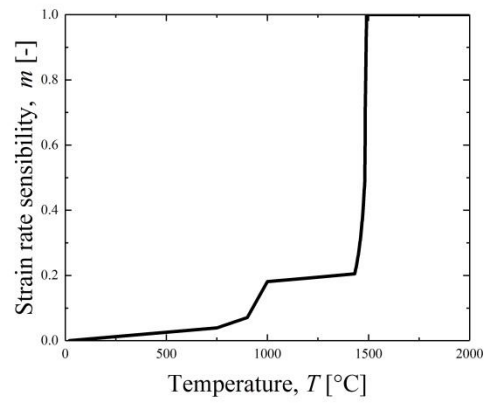


Fig. A.5: Evolution of the solid strain rate sensibility m as a function of temperature

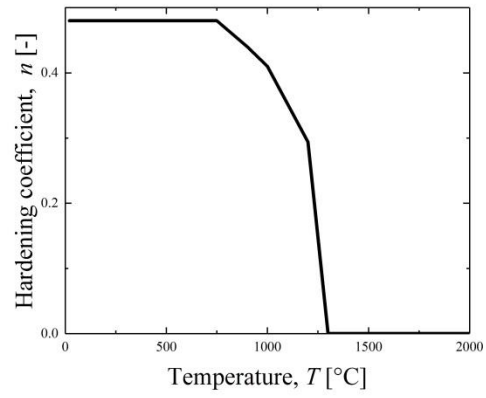


Fig. A.6: Evolution of the solid hardening coefficient n as a function of temperature

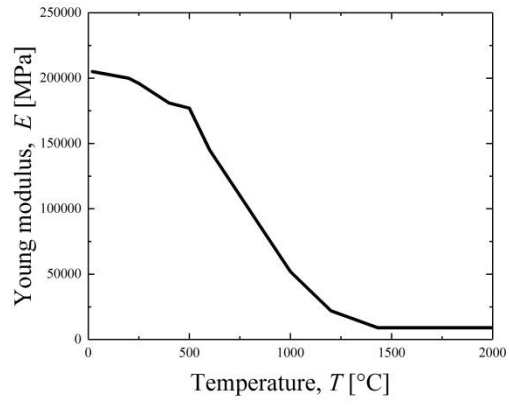


Fig. A.7: Evolution of the Young modulus E as a function of temperature

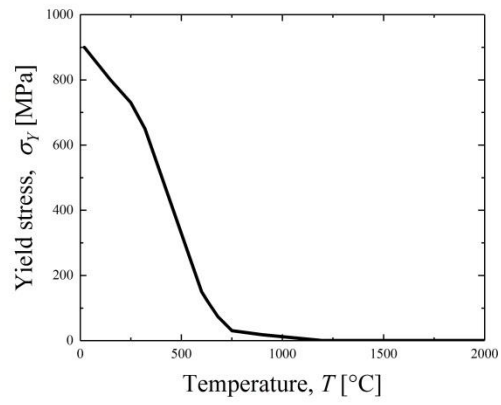


Fig. A.8: Evolution of the yield stress σ_Y as a function of temperature

<i>Mixed property</i>	<i>Mush</i>	<i>Bulk liquid</i>	<i>Gas</i>
$\hat{\rho}^F$	$\langle \rho \rangle^l$	$\langle \rho \rangle^l$	ρ^G
\hat{g}^F	g^l	1	1
$\widehat{g\rho}^F$	$g^l \langle \rho \rangle^l$	$\langle \rho \rangle^l$	ρ^G
$\hat{\mu}^F$	μ^l	μ^l	μ^G
$(\widehat{K}^F)^{-1}$	$\frac{180(1 - g^l)^2}{\lambda_2^2 g^{l^3}}$	0	0

Table 1. Expressions of the different mixed properties according to the region considered.

<i>Material parameter</i>	<i>Symbol</i>	<i>Value</i>	<i>Unit</i>
<i>Initial bottom temperature</i>	T_0^{bot}	1773.15	K
<i>Vertical temperature gradient</i>	G	3030.30	$K \cdot m^{-1}$
<i>Cooling rate</i>	R	-100	$K \cdot s^{-1}$
<i>Solidus temperature</i>	T_S	1704.15	K
<i>Liquidus temperature</i>	T_L	1763.65	K
<i>Solid density at solidus</i>	ρ_S	8000	$kg \cdot m^{-3}$
<i>Liquid density at liquidus</i>	ρ_L	6000	$kg \cdot m^{-3}$
<i>Gas density</i>	ρ^G	6000	$kg \cdot m^{-3}$
<i>Solid dilatation coefficient</i>	β^S	4×10^{-4}	K^{-1}
<i>Liquid dilatation coefficient</i>	β^L	2×10^{-4}	K^{-1}
<i>Gas viscosity</i> STEP I STEP II	μ^G	100 100	$Pa \cdot s$
<i>Liquid viscosity</i> STEP I STEP II	μ^L	100 100	$Pa \cdot s$
<i>Solid consistency</i>	K	100	$Pa \cdot s$
<hr/>			
<i>Numerical parameter</i>			
<i>Level set thickness</i>	ε	1	mm
<i>Time step</i>	Δt	0.01	s

Table 2. Values of material and numerical parameters used in unidirectional solidification test case.

<i>Element</i>	C	Mn	Cr	Mo	Si	Fe
<i>wt.%</i>	0.4	1.5	2	0.2	0.3	Balance

Table 3. Composition of the steel grade.

<i>Material parameter</i>			
	<i>Symbol</i>	<i>Value</i>	<i>Unit</i>
Solidus temperature	T_S	1704.15 (1431)	K (°C)
Liquidus temperature	T_L	1763.65 (1490.5)	K (°C)
Reference temperature	T_{ref}	1763.65 (1490.5)	K (°C)
Liquid density at liquidus	ρ_L	7001.82	kg · m ⁻³
Solid density	ρ^s	<i>Tabulation</i>	kg · m ⁻³
Gas density	ρ^G	1.3	kg · m ⁻³
Liquid dilatation coefficient	β^l	9.23×10^{-5}	K ⁻¹
Secondary dendritic arm spacing	λ_2	5×10^{-4}	m
Gas viscosity	STEP I STEP II μ^G	100 1×10^{-5}	Pa · s
Liquid viscosity	STEP I STEP II μ^l	100 5×10^{-3}	Pa · s
Solid consistency	K	<i>Tabulation</i>	Pa · s ^m
Poisson's ratio	ν	0.3	–
Strain rate sensibility	m	<i>Tabulation</i>	–
Hardening coefficient	n	<i>Tabulation</i>	–
Young modulus	E	<i>Tabulation</i>	MPa
Yield stress	σ_Y	<i>Tabulation</i>	MPa
<i>Simulation parameter</i>			
Initial temperature	T_{init}	1823.15 (1550)	K (°C)
Filling temperature	T_{fill}	1823.15 (1550)	K (°C)
External temperature	T_{ext}	293.15 (20)	K (°C)
Filling velocity	v_{fill}	5×10^{-2}	m · s ⁻¹
Heat transfer coefficient	h_T	3000	W · m ⁻² · K ⁻¹
<i>Numerical parameter</i>			
Level set thickness	ε	1	mm
Time step	Δt	0.01	s

Table 4. Material, simulation and numerical parameters used in ingot casting. All tabulations are provided as graphs in the Appendix.

<i>Solver</i>	<i>Computation time [h]</i>
Energy	2
Mechanics STEP I STEP II	15 9
Level set updating and reset	21
Remeshing	18
Others	2
Total	67

Table 5. Distribution of the computation time for the ingot casting simulation at process time 96 s.