



HAL
open science

α TAT1 controls longitudinal spreading of acetylation marks from open microtubules extremities OPEN

Nathalie Ly, Nadia Elkhatib, Enzo Bresteau, Olivier Pietrement, Mehdi Khaled, Maria M. Magiera, Carsten Janke, Eric Le Cam, Andrew Rutenberg, Guillaume Montagnac

► To cite this version:

Nathalie Ly, Nadia Elkhatib, Enzo Bresteau, Olivier Pietrement, Mehdi Khaled, et al.. α TAT1 controls longitudinal spreading of acetylation marks from open microtubules extremities OPEN. Scientific Reports, 2016, 10.1038/srep35624 . hal-02376384

HAL Id: hal-02376384

<https://hal.science/hal-02376384>

Submitted on 22 Nov 2019

HAL is a multi-disciplinary open access archive for the deposit and dissemination of scientific research documents, whether they are published or not. The documents may come from teaching and research institutions in France or abroad, or from public or private research centers.

L'archive ouverte pluridisciplinaire **HAL**, est destinée au dépôt et à la diffusion de documents scientifiques de niveau recherche, publiés ou non, émanant des établissements d'enseignement et de recherche français ou étrangers, des laboratoires publics ou privés.



Distributed under a Creative Commons Attribution 4.0 International License

SCIENTIFIC REPORTS



OPEN

α TAT1 controls longitudinal spreading of acetylation marks from open microtubules extremities

Received: 19 July 2016
Accepted: 27 September 2016
Published: 18 October 2016

Nathalie Ly^{1,*}, Nadia Elkhatab^{1,*}, Enzo Bresteau¹, Olivier Piétrement², Mehdi Khaled³, Maria M. Magiera⁴, Carsten Janke⁴, Eric Le Cam², Andrew D. Rutenberg^{5,*} & Guillaume Montagnac^{1,*}

Acetylation of the lysine 40 of α -tubulin (K40) is a post-translational modification occurring in the lumen of microtubules (MTs) and is controlled by the α -tubulin acetyl-transferase α TAT1. How α TAT1 accesses the lumen and acetylates α -tubulin there has been an open question. Here, we report that acetylation starts at open ends of MTs and progressively spreads longitudinally from there. We observed acetylation marks at the open ends of *in vivo* MTs re-growing after a Nocodazole block, and acetylated segments growing in length with time. Bias for MTs extremities was even more pronounced when using non-dynamic MTs extracted from HeLa cells. In contrast, K40 acetylation was mostly uniform along the length of MTs reconstituted from purified tubulin *in vitro*. Quantitative modelling of luminal diffusion of α TAT1 suggested that the uniform acetylation pattern observed *in vitro* is consistent with defects in the MT lattice providing lateral access to the lumen. Indeed, we observed that *in vitro* MTs are permeable to macromolecules along their shaft while cellular MTs are not. Our results demonstrate α TAT1 enters the lumen from open extremities and spreads K40 acetylation marks longitudinally along cellular MTs. This mode of tip-directed microtubule acetylation may allow for selective acetylation of subsets of microtubules.

Results and Discussion

Microtubules (MTs) are dynamic polymers composed of $\alpha\beta$ -tubulin dimers that assembled into hollow tubes. In most eukaryotic cells, MTs can undergo post-translational modifications (PTMs) that modify their properties and functions¹. Acetylation of the lysine 40 of α -tubulin (K40) is a common PTM that is catalysed by the α -tubulin acetyl-transferase α TAT1 and is associated with stable, long-lived MTs^{2–4}. Remarkably, K40 acetylation occurs in the lumen of MTs^{5,6} and is the only such PTM that we know of ref. 1. Supporting this, Szyk *et al.* recently used *in vitro* approaches to demonstrate that α TAT1 enters into and diffuses within the MT lumen⁷. However, Szyk *et al.* also suggested that fast diffusivity of α TAT1 leads to stochastic acetylation that occurs uniformly along the length of MTs. This was in marked contrast with earlier *in vivo* observations of discrete acetylated segments along MTs^{8–10} progressively elongating with time¹¹. More recently, several groups have reported that the acetylated segments were predominately associated with the ends of MTs *in vivo*^{3,12}. Thus, reported observations *in vivo* do not match the proposed model of uniformly distributed acetylated K40 marks based on experiments performed with *in vitro* MTs⁷.

To understand how acetylated K40 marks spreading occurs *in vivo*, we first analyzed acetylation dynamics in HeLa cells. In order to synchronize acetylation events, HeLa cells were subjected to complete MT depolymerisation by a prolonged treatment with Nocodazole before being allowed to reassemble MTs after washing out the

¹Inserm U1170, Gustave Roussy Institute, Université Paris-Saclay, Villejuif, France. ²CNRS UMR8126, Gustave Roussy Institute, Université Paris-Saclay, Villejuif, France. ³CNRS UMR1186, Gustave Roussy Institute, Université Paris-Saclay, Villejuif, France. ⁴Institut Curie, CNRS UMR3348, PSL Research University, Centre Universitaire, Orsay, France. ⁵Department of Physics and Atmospheric Science, Dalhousie University, Halifax, NS, B3H 4R2, Canada. *These authors contributed equally to this work. Correspondence and requests for materials should be addressed to A.D.R. (email: andrew.rutenberg@Dal.Ca) or G.M. (email: guillaume.montagnac@gustave.roussy.fr)

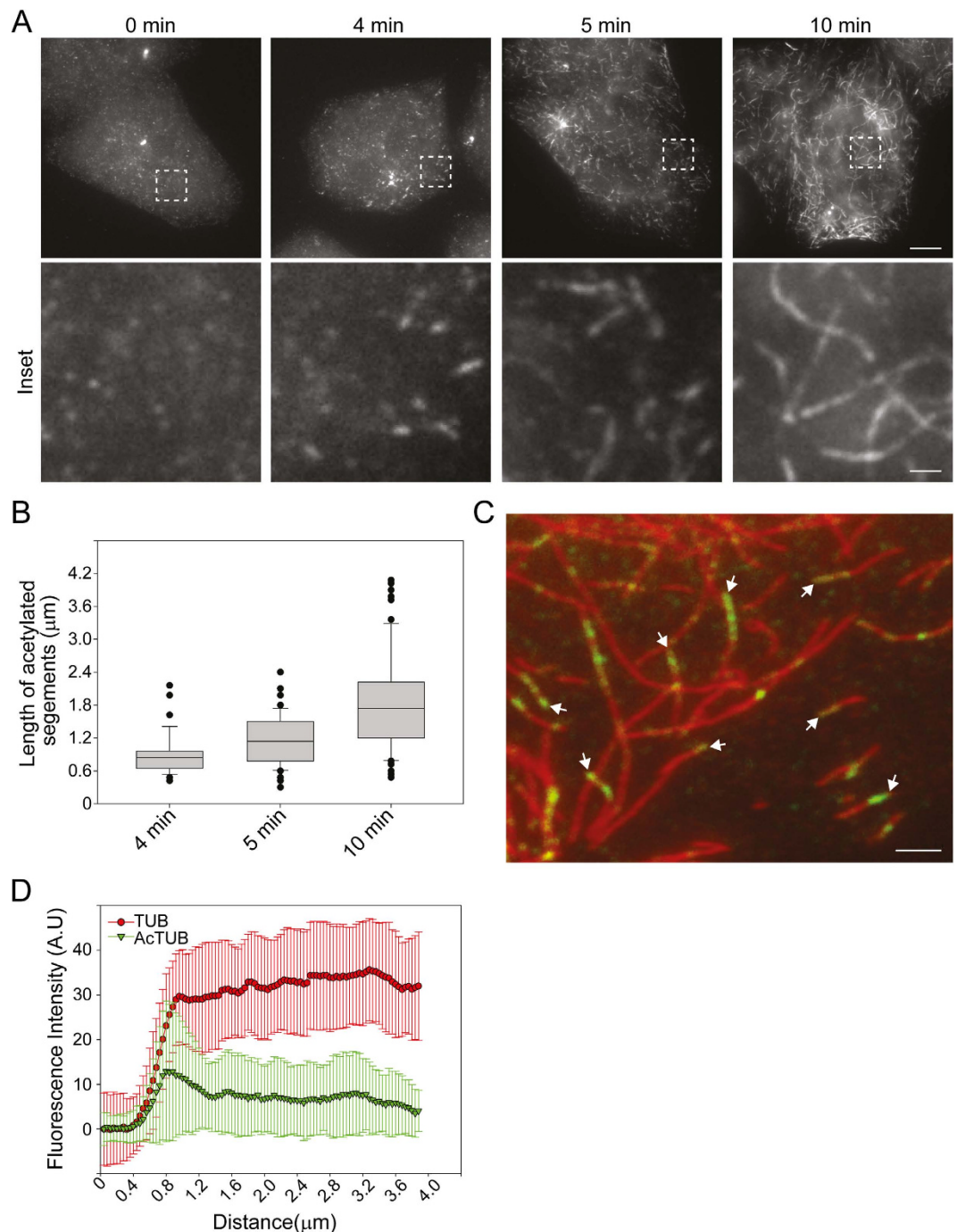


Figure 1. Preferential acetylation of MT ends *in vivo*. (A) HeLa cells recovering from a Nocodazole block were fixed at the indicated time point after washing out the drug and then stained for K40 acetylated tubulin. Scale bar: 10 μm . Insets corresponding to boxed regions are shown. Scale bar: 2 μm . (B) Box plot of acetylated segments length at the indicated time points. Data are represented as mean \pm S.E.M. (C) HeLa cells recovering from a Nocodazole block were fixed at 5 min after washing out the drug and stained for total tubulin (red) and K40 acetylated tubulin (green). Arrows indicate acetylated MT extremities. Scale bar: 2 μm . (D) Average fluorescence intensity distribution of total tubulin staining (red) and K40 acetylated tubulin (green) along MTs as in C (see Experimental Procedures section). Data are represented as mean \pm S.E.M.

drug. As previously reported, we observed that acetylated K40 segments became detectable as early as 4 minutes after Nocodazole washout (Fig. 1A). The length of these acetylated segments progressively increased with time (Fig. 1A,B). Careful examination of the distribution of acetylated segments visible at 5 minutes after washout revealed that acetylated K40 marks were frequently, but not always, associated with MT extremities (Fig. 1C). Measurements of the fluorescence intensity distribution along the long axis of MTs also showed an average enrichment of acetylated K40 marks at the extremities of MTs (Fig. 1D).

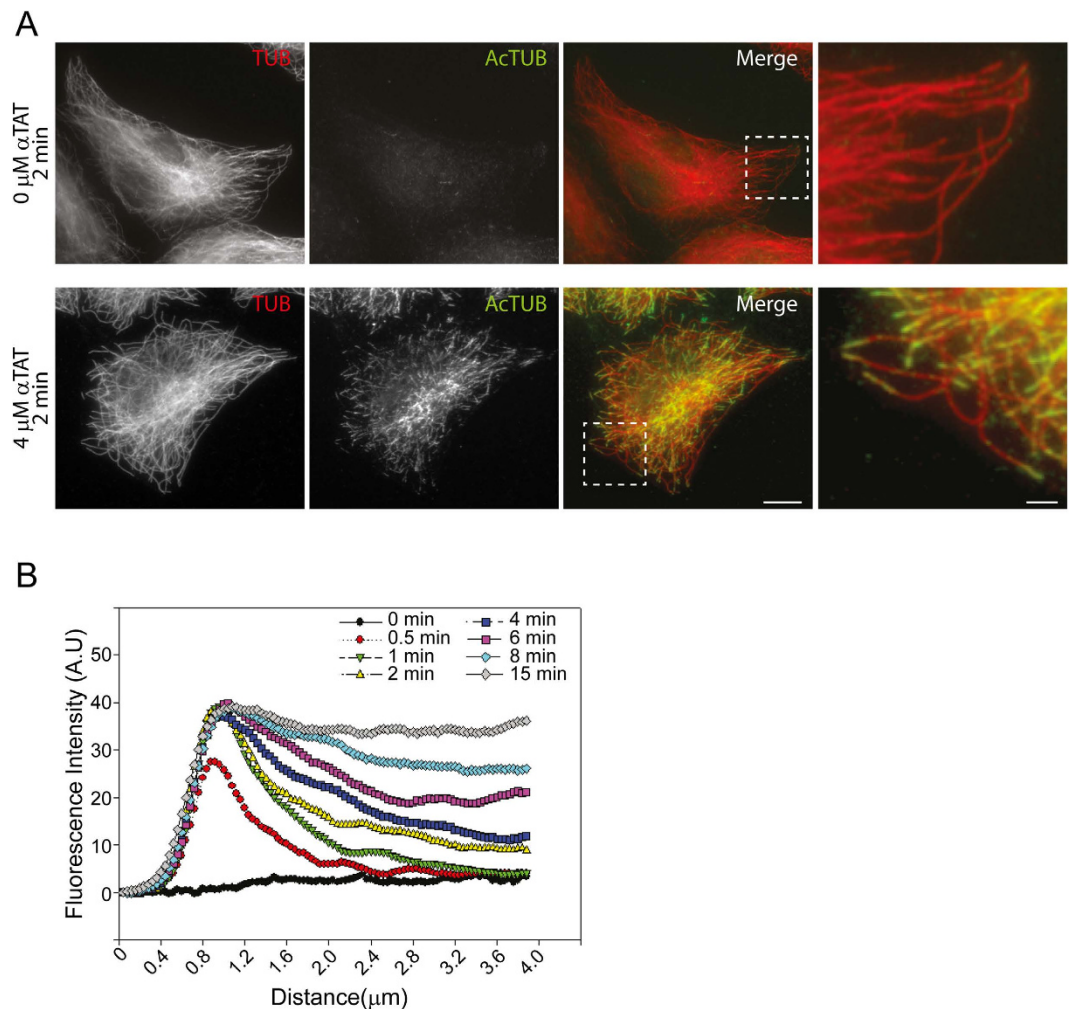


Figure 2. Longitudinal spreading of acetylated K40 marks from the ends of *ex vivo* MTs. (A) α TAT1-knockdown HeLa cells were Triton-extracted in the presence of Taxol and incubated for 2 min without (upper panels) or with $4\ \mu\text{M}$ recombinant α TAT1 (lower panels) before being fixed and stained for total (red) and acetylated tubulin (green). Scale bar: $10\ \mu\text{m}$. Insets corresponding to boxed regions are shown. Scale bar: $2\ \mu\text{m}$. (B) Average fluorescence intensity distribution of K40 acetylated tubulin along MTs (MTs tip at $x = 1\ \mu\text{m}$) after indicated time period incubation with $4\ \mu\text{M}$ recombinant α TAT1 as in A. Data are represented as mean. The S.E.M was omitted for clarity.

Our observation of a preference for acetylation at MT extremities agrees with earlier reports *in vivo*^{3,12} and suggests that α TAT1 accesses the lumen from the open ends of MTs and starts acetylating at those extremities. However, we also observed acetylation segments far from *in vivo* microtubule ends (Fig. 1C). While this might denote alternative lateral α TAT1 entry sites, we hypothesize instead that the extremely dynamic nature of microtubules *in vivo* allows unacetylated extensions to grow past acetylated K40-positive extremities, leaving acetylated segments behind. Indeed, microtubule polymerization is much faster than acetylation spreading (in the order of $\sim 10\ \mu\text{m}/\text{min}$ while acetylated segments elongate only $2\ \mu\text{m}$ in 8 min as measured here). In this case, non-dynamic MTs should exhibit more acetylation segments at MT ends.

To test this hypothesis, we used α TAT1-knockdown HeLa cells extracted by a brief immersion in a MT stabilizing buffer containing Triton. In these conditions, Taxol-stabilized *ex vivo* cellular MTs were readily visible and were negative for anti-acetylated K40 staining (Fig. 2A, upper panels). *Ex vivo* MTs were then incubated with $4\ \mu\text{M}$ of a recombinant catalytic domain of mouse α TAT1 (residues 1–193) in the presence of Acetyl-CoA for different time periods. Acetylated segments of MTs became visible as early as 30 s after addition of the recombinant enzyme and these segments were found to grow longer with time (Supplementary Figure 1), similarly to our *in vivo* observations. We then analysed the distribution of acetylated segments along MTs and observed that virtually all acetylated segments detected after a 2 min incubation period with the enzyme were located at the ends of individual MTs, with no detectable staining in other MT regions (Fig. 2A, lower panels). At the earliest time point analysed (30 s), small acetylated K40 segments were similarly found at the open extremity of MTs (Supplementary Figure 2). These tip-located acetylated segments grew in length with time, and by 15 min, most visible MTs were acetylated along their entire length (Supplementary Figure 2).

Measurements of fluorescence intensity showed that while total tubulin staining was constant along the length of *ex vivo* MTs (Supplementary Figure 3A), a strong bias for the extremities was observed for the acetylated K40 signal (Fig. 2B). We also noted a time-dependent progressive increase of staining intensity near the tips along with a progressive longitudinal (axial) spreading of acetylated K40 marks (Fig. 2B). We obtained similar results when using *ex vivo* MTs that were not stabilized with Taxol (Supplementary Figure 3B). In these latter conditions, the maximum intensity of acetylated K40 staining at the extremity was lower than in Taxol-stabilized *ex vivo* MTs. This may be due to a slow depolymerisation of MT ends leading to a partial loss of acetylation signal. Also, we performed acetylation assays on Taxol-stabilized *ex vivo* MTs by using a lower concentration (0.4 μM) of recombinant αTAT1 . While the kinetics of acetylation was reduced, we observed the same preference for MT extremities and a progressive spreading of acetylated K40 marks from the ends (Supplementary Figure 3C). Together, our analysis unambiguously demonstrates that acetylation spreads progressively, longitudinally along *ex vivo* MTs, from their open extremities. Our data also suggest that acetylated segments observed far from MT ends *in vivo* most likely results from the dynamicity of MTs.

Because this conclusion disagrees with reports of uniform acetylation *in vitro*⁷, we next decided to analyse acetylation dynamics in Taxol-stabilized MTs assembled *in vitro* from purified HeLa cells tubulin dimers. Because HeLa tubulin dimers are poorly acetylated, no acetylated K40 marks were observed immediately after polymerization *in vitro* (Fig. 3A, left panel). However, after a 2 minutes incubation period in the presence of 4 μM recombinant αTAT1 , we observed a punctuated acetylated K40 staining with an approximately random distribution along the length of MTs (Fig. 3A, middle panel). After a 4 minutes incubation period with the enzyme, the acetylated K40 signal was more intense but still distributed randomly along the length of the MTs. Careful examination revealed that extremities were often positive for acetylated K40 marks (Fig. 3A), though this was less striking than *in vivo* (Fig. 1C). The average fluorescence intensity distribution also showed a slight enrichment of acetylated K40 marks at open extremities as compare to other regions of MTs (Fig. 3C). We obtained similar results when using MTs assembled *in vitro* from purified bovine brain tubulin (not shown). In agreement with observations by Szyk *et al.*, we concluded that acetylation occurs randomly (uniformly) along the length of *in vitro* MTs⁷. This is in marked contrast with our *in vivo* and *ex vivo* observations and therefore suggests that *in vitro* and cellular MTs may differ in their intrinsic properties.

Structural defects in the MT lattice, such as missing tubulin dimers or abrupt variations of protofilament number have been reported in *in vitro* assembled MTs^{13,14}. It was recently proposed that stress accumulation at these lattice defects can results in the formation of larger damages that self-repair rapidly^{14,15}. Indeed, transient opening of the MT lattice resulting from separation between protofilaments have been hypothesized to provide direct access to the MT lumen in a proposed “breathing model”^{16,17}. To explore the hypothesis that the differences we observed were due to transient holes or defects on the sides of *in vitro* MTs, we have developed a mathematical model of αTAT1 diffusion within MTs followed by local acetylation by αTAT1 . We have included both lateral access (due to holes), and access from MT extremities, followed by longitudinal diffusion as characterized by Szyk *et al.*⁷ (see Experimental Procedures section for details). When lateral access was not allowed, we observed that acetylation marks spreads longitudinally from the open MT extremities (Fig. 3D). This is in qualitative agreement with our *ex vivo* results. However, when lateral access was implemented in the model using αTAT1 residence times determined by Szyk *et al.*⁷, acetylation was uniform along the length of MTs (Fig. 3E). Thus, our modelling captures the qualitative difference between the mostly uniform acetylation *in vitro* and the progressive acetylation *ex vivo* and suggests that the shaft of *in vitro* reconstituted MTs is permeable to αTAT1 while the one of cellular MTs is not.

With our quantitative model of longitudinal diffusion, local acetylation, and possible lateral entry we observed that tip-directed acetylation is consistent with the measured luminal diffusivity of αTAT1 ⁷, together with a moderate acetylation rate and vanishing lateral entry. Conversely, we showed that uniform acetylation is consistent with rapid lateral entry (with respect to the times at which measurements are taken) independent of the other parameters. Are other parameterizations, perhaps without lateral entry, consistent with the observed phenomenology? Without lateral entry, tip-directed acetylation should be observed at earlier times in longer MT. The earliest reported uniform acetylation was at 15s in 10 μm *in vitro* MT⁷, which we found (data not shown) requires luminal diffusivities at least 5 times larger than measured by Szyk *et al.* if uniformity of αTAT1 within 20% of the maximum is required. For 20 μm long MT, at least 20 times larger diffusivities are needed. However, such large luminal diffusivities preclude the tip-directed acetylation we observe *in vivo*. Since we have no reason to expect luminal diffusivities to hugely differ between *in vivo* and *in vitro* MT, we conclude that uniform acetylation observed for *in vitro* MT requires rapid lateral access of αTAT1 .

If defects or holes in lattice allow αTAT1 to access the lumen of MTs assembled *in vitro*, the same could be true for other macromolecules. It has been reported that antibodies targeting luminal epitopes cannot access to the lumen of unfixed cellular MTs¹⁸. Indeed, while fixed, Triton-extracted HeLa cell MTs showed a classical anti-acetylated K40 staining, only a background staining was detectable in unfixed conditions (Fig. 4A). In sharp contrast, anti-acetylated K40 staining was visible along both fixed and unfixed *in vitro* MTs (Fig. 4B). We concluded that, in unfixed conditions, the anti-acetylated K40 antibody can access the lumen of *in vitro* but not cellular MTs. Our data suggest that the shaft of *in vitro* MTs is leaky and allows lateral access of macromolecules to the lumen. This agrees with both our modelling, and the observed uniform acetylation patterns of *in vitro* MTs.

It has been suggested that αTAT1 could bind to the outside of MTs and that this could facilitate targeting the enzyme to the lumen¹⁹. Indeed, we observed by Atomic Force Microscopy that αTAT1 binds to the exterior face of *in vitro* MTs (Supplementary Figure 4). This exterior binding could enhance αTAT1 entry to the lumen through holes or defects in the lattice of MTs polymerized *in vitro*, or to the open ends of MTs polymerized *in vivo*. This raises the possibility that the reported scanning behaviour of individual αTAT1 molecules does not occur exclusively in the lumen of MTs as previously suggested⁷ but also on the outer surface, facilitating αTAT1

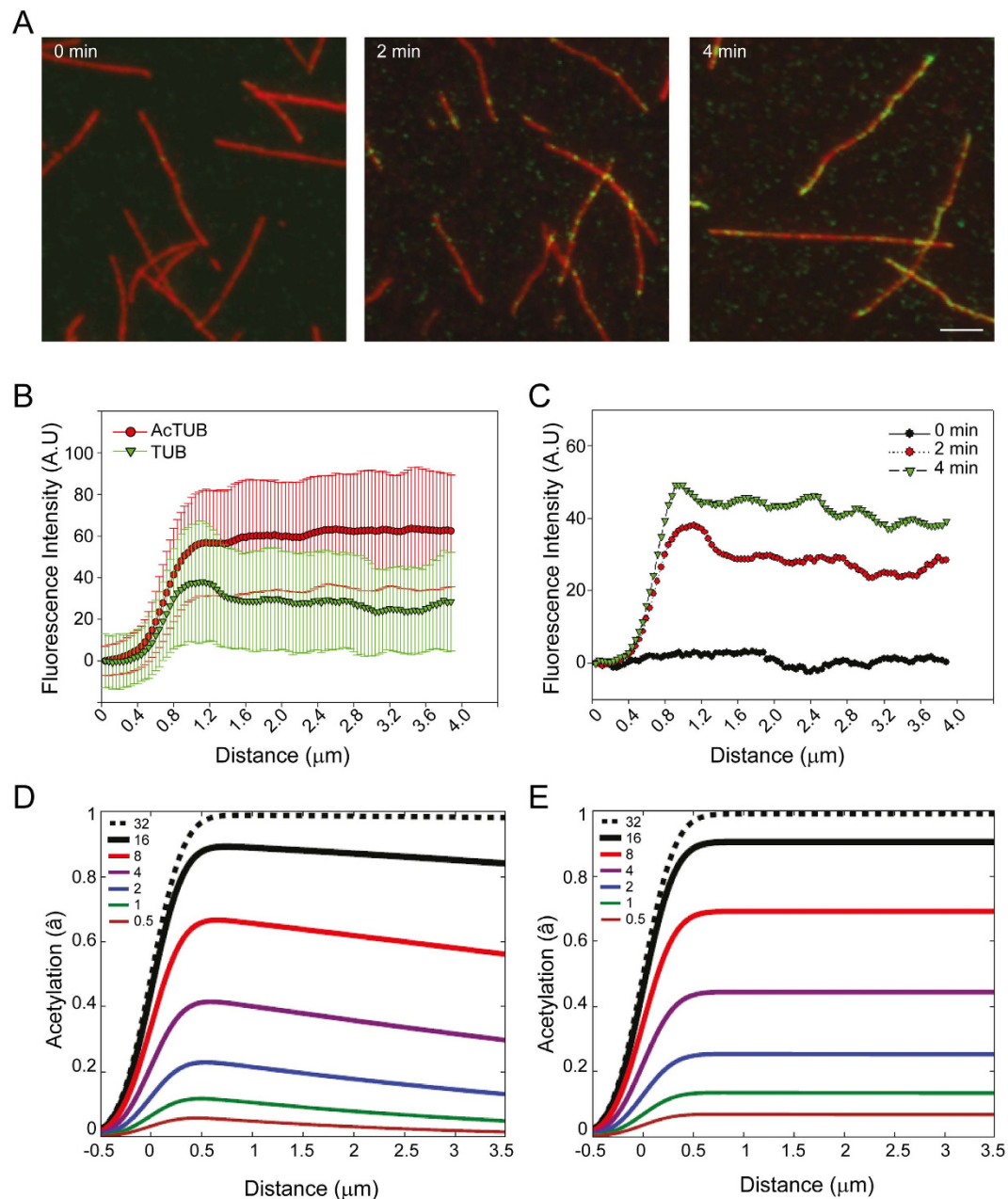


Figure 3. Stochastic acetylation of microtubules assembled *in vitro*. (A) MTs assembled *in vitro* from HeLa cell-purified tubulin dimers were incubated in the presence of $4\mu\text{M}$ recombinant αTAT1 for the indicated time period before being fixed and stained for total tubulin (red) and acetylated K40 tubulin (green). Scale bar: $5\mu\text{m}$. (B) Average fluorescence intensity distribution of total tubulin staining (red) and acetylated K40 tubulin (green) along MTs (MTs tip at $x = 1\mu\text{m}$) after a 2 min incubation period with recombinant αTAT1 as in A. Data are represented as mean \pm S.E.M. (C) Average fluorescence intensity distribution of acetylated K40 tubulin along MTs (MTs tip at $x = 1\mu\text{m}$) after a 0 (black), 2 (red) or 4 (green) min incubation period with recombinant αTAT1 as in A. Data are represented as mean. The S.E.M was omitted for clarity. (E,D) Theoretical average acetylation marks distribution along MTs (MTs tip at $x = 1\mu\text{m}$) after the indicated incubation period with $4\mu\text{M}$ αTAT1 without (E) or with (D) allowed lateral access. Data were convoluted with a 250nm width Gaussian point-spread-function (PSF) to better qualitatively compare with the microscopy results. The color-coded legend indicates the time in minutes since entry into the unacetylated lumen begins.

entry in the lumen. Such surface scanning behaviour would not change our results or conclusions, which relate to the luminal availability and acetylation activity of αTAT1 .

To conclude, our data suggest that *in vitro* assembled MTs presents holes or defects along their shaft that allow lateral entry of αTAT1 to the lumen. The nature of such holes and why *in vitro* MTs would display more holes as compare to cellular MTs is not clear. One possibility is that MTs growing in the cellular context would be protected from developing or acquiring lateral access-promoting defects. Along this line, dislocation defects due to

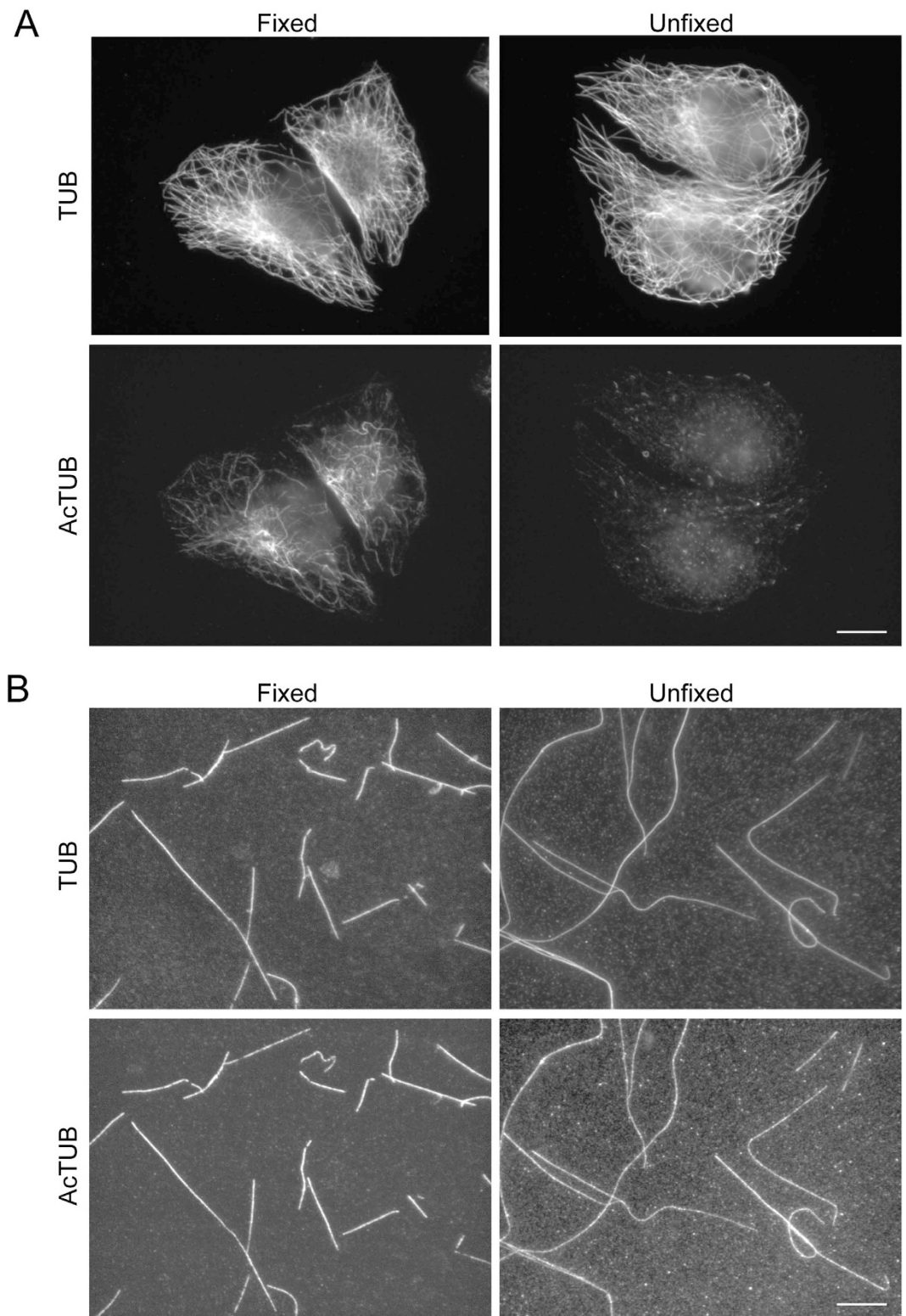


Figure 4. MTs assembled *in vitro* are permeable to anti-acetylated K40 antibody. (A) HeLa cells were Triton-extracted in the presence of Taxol and then fixed or not with MetOH as indicated before being stained for total (TUB) and acetylated tubulin (AcTUB). Scale bar: 10 μm . (B) MTs assembled *in vitro* from acetylated bovine brain-purified tubulin dimers were stabilized with Taxol and then fixed or not with MetOH as indicated before being stained for total (TUB) and acetylated tubulin (AcTUB). Scale bar: 10 μm .

abrupt transition in the number of protofilaments have been reported to be twice as common *in vitro* as compared to *in vivo* conditions¹³. This raises the possibility that growth conditions for *in vitro* MT could be adjusted to

reduce the number of holes or defects. Alternatively, microtubule-associated proteins (MAPs) might block lateral holes in cellular MTs, preventing α TAT1 access to the lumen at these sites. In this case, appropriate MAPs would need to be included in *in vitro* acetylation assays to recapitulate *in vivo* results.

Our results demonstrate that *in vitro* reconstituted MTs do not recapitulate the properties of cellular MTs and we urge great caution in studying the effects of MT acetylation with such MTs. Based on the apparent stochastic acetylation pattern *in vitro*, it was proposed that α TAT1 controls a selective, age-dependent MT acetylation⁷. In contrast to this model, the major finding of our work is that α TAT1 controls the longitudinal spreading of acetylation marks from open MT extremities in physiological conditions. In our model, the selective acetylation of a subset of MTs that is observed *in vivo* is not primarily controlled by the stability of this subset but rather by the chance that a given MT would acquire α TAT1 at its extremities. MTs have been shown to contact α TAT1-rich structures like clathrin-coated pits and focal adhesions, two types of structures that mostly accumulate at the front of migrating cells^{12,20,21}. We propose that multiple contacts between MTs and these structures would enhance α TAT1 acquisition by front-oriented MTs leading to the progressive acetylation of this MT subset from their open extremities. This selective, tip-oriented acetylation mechanism has important consequences since cell-front oriented acetylated MTs are instrumental in controlling directional cell migration¹².

Methods

Cell culture. HeLa cells (a gift from A. Dautry, Institut Pasteur, Paris, France) were grown in DMEM, high glucose, GlutaMax™ supplement media, supplemented with 10% fetal calf serum at 37 °C in 5% CO₂.

Antibodies and reagents. Mouse monoclonal anti-K40 acetylated tubulin (clone 6–11B1) was purchased from Sigma. Recombinant humanised anti- α -tubulin (clone F2C-hFc2) and Cy3-conjugated anti-human antibodies were purchased from the antibody platform of the Institut Curie (Paris, France). DyLight488-conjugated anti-mouse antibodies were from Jackson Immunoresearch. Nocodazole was purchased from Sigma.

RNA interference. For siRNA depletion, HeLa cells were plated at 20% confluence and treated with the α TAT1 siRNA (25 nM; ON-TARGETplus SMARTpool, Dharmacon, Lafayette, CO, USA) using RNAiMAX transfection reagent according to the manufacturer's instruction (Invitrogen, Carlsbad, CA). Protein depletion was maximal after 72 h of siRNA treatment as shown by immunofluorescence analysis with anti-acetylated K40 antibodies. Sequences of α TAT1 siRNAs: 5'-GUAGCUAGGUCCCGAUUA-3', 5'-GAGUAUAGCUAGAUCUUU-3', 5'-GGGAAACUCACCAGAACGA-3', 5'-CUUGUGAGAUUGUCGAGAU-3'.

DNA constructs and protein purification. DNA sequence encoding residues 1–193 (catalytic domain) of mouse α TAT1 was obtained by PCR by using cDNA of C-terminally GFP-tagged mMEC17 as a template (Montagnac *et al.*, Nature, 2013). PCR fragment with engineered flanking restriction sites was subcloned into the multi-cloning sites of pGEX4T1 (Amersham Pharmacia Biotech) to encode in-frame fusion proteins with the amino-terminal GST-tag. The construct was verified by double-stranded DNA sequencing. Purification of the recombinant protein was performed using standard protocols as described¹². HeLa cell tubulin and bovine brain tubulin were purified as described²².

Indirect immunofluorescence. For analysis of acetylation dynamics with *in vivo* microtubules, HeLa cells plated onto coverslips were incubated in the presence of 10 μ M Nocodazole for 5 hours to induce microtubule depolymerisation. Cells were then washed three times in complete medium to washout Nocodazole and allow microtubules to re-grow. Cells were then fixed at indicated time points after washout in ice-cold methanol and processed for immunofluorescence microscopy by using anti- α -tubulin and anti-acetylated K40 antibodies.

For *ex vivo* acetylation assay, cells were washed in PEM buffer (80 mM PIPES, 1 mM EGTA, 1 mM MgCl₂, pH 6, 8) before microtubules extraction in PEM buffer containing 1% Triton X-100 and 10 μ M Taxol. Acetylation reactions were performed in PEM buffer containing 10 μ M Taxol and the indicated concentration of recombinant α TAT1 in presence of 50 μ M acetyl coenzyme A (Sigma) at 37 °C and stopped at indicated time points by fixation with ice cold methanol before being processed for immunofluorescence microscopy by using anti- α -tubulin and anti-acetylated K40 antibodies.

For the *in vitro* microtubule acetylation assay, 25 μ M HeLa cell-purified tubulin was incubated in PEM buffer supplemented with 15% glycerol and 1 mM GTP, for 40 min at 37 °C to promote polymerization. Microtubules were then diluted in PEM progressively supplemented with 10 μ M taxol (Sigma). Acetylation reactions were performed in PEM-Taxol buffer with 4 μ M recombinant α TAT, in presence of 50 μ M acetyl coenzyme A (Sigma) at 37 °C and stopped at indicated time points by fixation with 2% glutaraldehyde. Microtubules were adsorbed on poly-L-lysine coated coverslips and processed for immunofluorescence microscopy by using anti- α -tubulin and anti-acetylated K40 antibodies.

For experiments with unfixed microtubules, Triton-extracted HeLa cell microtubules or microtubules assembled *in vitro* from purified bovine brain tubulin were prepared as described above and incubated with the anti-acetylated K40 antibody for 30 min at room temperature. For *in vitro* microtubules, this incubation step was performed in suspension before microtubules were washed and spotted on a glass coverslip. Microtubules were then processed for immunofluorescence microscopy as described above except that microtubules were not fixed.

Cells or microtubules were imaged with the 100 \times objective of a wide-field microscope DM6000 B/M (Leica Microsystems) equipped with a CCD CoolSnap HQ camera (Roper Scientific) and steered by Metamorph 7 (Molecular Devices). All pictures shown are representative of at least three independent experiments.

Analysis of fluorescence distribution along microtubules. Analysis of total tubulin or acetylated K40 tubulin signal distribution along microtubules was performed using Metamorph 7 (Molecular Devices) software by drawing a 4 μ m long linescan along the long axis of unambiguously individual microtubules, starting 1 μ m in

front of the visible tip. Total or acetylated K40 background fluorescence values were subtracted for each individual microtubules. At least 100 microtubules from 3 independent experiments were analysed for each time points. Data were pooled and expressed as mean fluorescence \pm S.E.M. over distance. S.E.M. was omitted in some figures for clarity.

Modelling Methods. From the one-dimensional diffusion equation for the time-evolution of a linear density $\rho(x, t)$ of α TAT1 in the MT lumen,

$$\frac{\partial \rho(x, t)}{\partial t} = D \partial^2 \rho / \partial x^2, \quad (1)$$

the solution²³ is

$$\rho(x, t) = \rho_0 \operatorname{erfc}\left(\frac{x}{\sqrt{4Dt}}\right), \quad (2)$$

where the position $x \geq 0$ is measured from the end of the MT and the time $t \geq 0$ is measured from when α TAT1 is added. Here ρ_0 represents the steady-state luminal concentration of α TAT1 that results from whatever bulk concentration is imposed from outside the MT. This differs slightly from the model of Szyk *et al.*, since they used a fixed length MT open at both ends⁷. In addition, Szyk *et al.* did not consider acetylation or lateral entry of α TAT1 in their quantitative model⁷.

We model the acetylation as a local density of available sites $a(x, t)$ that are acetylated by locally available α TAT1, so that

$$\frac{\partial a(x, t)}{\partial t} = \Gamma \rho(x, t)(a_0 - a) \quad (3)$$

where Γ is our acetylation rate. This is easily solvable in closed form, and defining $\hat{a} \equiv a/a_0$ and $z \equiv x/\sqrt{4Dt}$ we obtain

$$\hat{a}(x, t) = 1 - \exp(-\rho_0 \Gamma t [(1 + 2z^2) \operatorname{erfc}(z) - 2z \exp(-z^2)/\sqrt{\pi}]). \quad (4)$$

To model the effects of lateral entry of α TAT1 into the MT lumen, through transient or static holes, we assume uniform entry so that

$$\frac{\partial \rho(x, t)}{\partial t} = \frac{D \partial^2 \rho}{\partial x^2} + \gamma(\rho_0 - \rho) \quad (5)$$

where the rate γ captures the size, density, frequency, and lifetime of holes that allow α TAT1 entry. The closed-form solution is

$$\rho(x, t) = \rho_0 \left[1 + \exp(-\gamma t) \left(\operatorname{erfc}\left(\frac{x}{\sqrt{4Dt}}\right) - 1 \right) \right]. \quad (6)$$

We see that as $\gamma \rightarrow \infty$, we immediately impose the steady-state luminal concentration $\rho = \rho_0$. When $\gamma > 0$, we solve for the time-dependent acetylation numerically to obtain $\hat{a}(x, t)$ —note that the spatial-dependence of \hat{a} will no longer be simply in terms of $z \equiv x/\sqrt{4Dt}$.

To evaluate our analytical and numerical results, we need to determine the diffusivity D , the lateral entry rate γ , and the combination $\Gamma \rho_0$. Since acetylation is reported in arbitrary units, we do not need an explicit value of a_0 —i.e. we plot $\hat{a} \equiv a/a_0$.

Szyk *et al.* determined $D = 0.27 \mu\text{m}^2/\text{s}$ from tracking of individual fluorescently-labeled α TAT1 in the MT lumen⁷. D is approximately 100x smaller than the geometrically hindered diffusivity $D_{\text{hindered}} = 26.3 \mu\text{m}^2/\text{s}$ expected for a particle the size of α TAT1 in the tube-like MT geometry⁷. This difference is due to the reversible binding of α TAT1 to the MT²⁴, with $D = \alpha D_{\text{hindered}}$. The correction factor α is the duty-factor, or the proportion of time that α TAT1 is unbound and diffusing. The 100x reduced D results from α TAT1 being almost always immobilized with $\alpha \approx 0.01$. Crucially, a key assumption is that the binding kinetics are “faster than diffusion transport rates”²⁴. From the video microscopy of Szyk *et al.*, no immobilized α TAT1 is apparent by eye. This implies very fast binding/unbinding within the lumen, with $\tau_{\text{unbind}} \lesssim 0.1 \text{ s}$, which is consistent with the assumptions of Odde and Crank for length-scales greater-than $\ell = \sqrt{D \tau_{\text{unbind}}} \approx 0.1 \mu\text{m}$.

Szyk *et al.* determined a lifetime $\tau = 1.5 \text{ s}$ of α TAT1 “interaction” in the MT lumen (see their Fig. 5c). However, τ cannot be a transition between D and D_{hindered} since $D = 0.27 \mu\text{m}^2/\text{s}$ already includes the effects of binding/unbinding and we have already seen that binding and unbinding are relatively fast. Instead, we interpret τ as a lifetime of residence in the MT lumen. We believe τ represents the rate of escape from the MT lumen, and so also determines the lateral entry rate $\gamma = \frac{1}{\tau} = 40/\text{min}$. Finally, Shida *et al.* determined $k_{\text{cat}} = 615 \pm 34 \times 10^{-6} \text{ s}^{-1}$ for $1 \mu\text{M}$ bulk α TAT1⁴. We take $\Gamma \rho_0 = 4 k_{\text{cat}} \tau = 0.15/\text{min}$, corresponding to our $4 \mu\text{M}$ bulk α TAT1.

Atomic Force Microscopy. As described above microtubules polymerization was promoted by incubating tubulin in PEM buffer supplemented with 15% glycerol and 1 mM GTP, for 40 min at 37 °C to. Microtubules were then diluted in PEM supplemented with 10 μM taxol. Experiments with α TAT were carried out in PEM-Taxol buffer with 400 nM recombinant α TAT1 at 37 °C.

5 μ l of microtubules aliquot (with and without α TAT1) were deposited on mica surface pretrated with 100 μ M spermidine²⁵ and incubated for typically 20 s, which allows the diffusion of microtubules on the surface and their adsorption²⁶. The mica surface was then plunged for 30s in uranyl acetate solution (0.02% w/v) for microtubules fixation on mica surface. Finally, the sample was rinsed with pure water (Millipore) and dried with a filter paper. AFM imaging was carried out in Tapping Mode, with a Multimode system (Bruker) operating with a Nanoscope V controller (Bruker). We used silicon AC200TS cantilevers (Olympus) with resonance frequencies around 150 kHz. All images were collected at a scan frequency of 1 Hz and a resolution of 2048 \times 2048 pixels. Images were analysed with Nanoscope V software, and a third-order polynomial function was used to remove the background.

References

- Song, Y. & Brady, S. T. Post-translational modifications of tubulin: pathways to functional diversity of microtubules. *Trends in cell biology* **25**, 125–136 (2015).
- Perdiz, D., Mackeh, R., Pous, C. & Baillet, A. The ins and outs of tubulin acetylation: more than just a post-translational modification? *Cellular signalling* **23**, 763–771 (2011).
- Akella, J. S. *et al.* MEC-17 is an alpha-tubulin acetyltransferase. *Nature* **467**, 218–222 (2010).
- Shida, T., Cueva, J. G., Xu, Z., Goodman, M. B. & Nachury, M. V. The major alpha-tubulin K40 acetyltransferase alphaTAT1 promotes rapid ciliogenesis and efficient mechanosensation. *Proc Natl Acad Sci USA* **107**, 21517–21522 (2010).
- Nogales, E., Whittaker, M., Milligan, R. A. & Downing, K. H. High-resolution model of the microtubule. *Cell* **96**, 79–88 (1999).
- Soppina, V., Herbstman, J. F., Skiniotis, G. & Verhey, K. J. Luminal localization of alpha-tubulin K40 acetylation by cryo-EM analysis of fab-labeled microtubules. *PLoS One* **7**, e48204 (2012).
- Szyk, A. *et al.* Molecular basis for age-dependent microtubule acetylation by tubulin acetyltransferase. *Cell* **157**, 1405–1415 (2014).
- Piperno, G., LeDizet, M. & Chang, X. J. Microtubules containing acetylated alpha-tubulin in mammalian cells in culture. *J Cell Biol* **104**, 289–302 (1987).
- Webster, D. R. & Borisy, G. G. Microtubules are acetylated in domains that turn over slowly. *J Cell Sci* **92** (Pt 1), 57–65 (1989).
- Wilson, P. J. & Forer, A. Effects of nanomolar taxol on crane-fly spermatocyte spindles indicate that acetylation of kinetochore microtubules can be used as a marker of poleward tubulin flux. *Cell motility and the cytoskeleton* **37**, 20–32 (1997).
- Bulinski, J. C., Richards, J. E. & Piperno, G. Posttranslational modifications of alpha tubulin: deetyrosination and acetylation differentiate populations of interphase microtubules in cultured cells. *J Cell Biol* **106**, 1213–1220 (1988).
- Montagnac, G. *et al.* alphaTAT1 catalyses microtubule acetylation at clathrin-coated pits. *Nature* **502**, 567–570 (2013).
- Chretien, D., Metz, F., Verde, F., Karsenti, E. & Wade, R. H. Lattice defects in microtubules: protofilament numbers vary within individual microtubules. *J Cell Biol* **117**, 1031–1040 (1992).
- Schaap, I. A., Carrasco, C., de Pablo, P. J., MacKintosh, F. C. & Schmidt, C. F. Elastic response, buckling, and instability of microtubules under radial indentation. *Biophysical journal* **91**, 1521–1531 (2006).
- Schaedel, L. *et al.* Microtubules self-repair in response to mechanical stress. *Nature materials* **14**, 1156–1163 (2015).
- Diaz, J. F., Barasoain, I. & Andreu, J. M. Fast kinetics of Taxol binding to microtubules. Effects of solution variables and microtubule-associated proteins. *J Biol Chem* **278**, 8407–8419 (2003).
- Diaz, J. F., Valpuesta, J. M., Chacon, P., Diakun, G. & Andreu, J. M. Changes in microtubule protofilament number induced by Taxol binding to an easily accessible site. Internal microtubule dynamics. *J Biol Chem* **273**, 33803–33810 (1998).
- Draber, P., Draberova, E., Linhartova, I. & Viklicky, V. Differences in the exposure of C- and N-terminal tubulin domains in cytoplasmic microtubules detected with domain-specific monoclonal antibodies. *J Cell Sci* **92** (Pt 3), 519–528 (1989).
- Howes, S. C., Alushin, G. M., Shida, T., Nachury, M. V. & Nogales, E. Effects of tubulin acetylation and tubulin acetyltransferase binding on microtubule structure. *Mol Biol Cell* **25**, 257–266 (2014).
- Kaverina, I., Krylyshkina, O. & Small, J. V. Microtubule targeting of substrate contacts promotes their relaxation and dissociation. *J Cell Biol* **146**, 1033–1044 (1999).
- Castro-Castro, A., Janke, C., Montagnac, G., Paul-Gilloteaux, P. & Chavrier, P. ATAT1/MEC-17 acetyltransferase and HDAC6 deacetylase control a balance of acetylation of alpha-tubulin and cortactin and regulate MT1-MMP trafficking and breast tumor cell invasion. *European journal of cell biology* **91**, 950–960 (2012).
- Barisic, M. *et al.* Mitosis. Microtubule deetyrosination guides chromosomes during mitosis. *Science* **348**, 799–803 (2015).
- Crank, J. *The Mathematics of Diffusion*, 2nd edition (Oxford University Press, Oxford UK, 1975).
- Odde, D. Diffusion inside microtubules. *European biophysics journal: EBJ* **27**, 514–520 (1998).
- Pastre, D. *et al.* Anionic polyelectrolyte adsorption on mica mediated by multivalent cations: a solution to DNA imaging by atomic force microscopy under high ionic strengths. *Langmuir: the ACS journal of surfaces and colloids* **22**, 6651–6660 (2006).
- Hamon, L., Curmi, P. A. & Pastre, D. High-resolution imaging of microtubules and cytoskeleton structures by atomic force microscopy. *Methods in cell biology* **95**, 157–174 (2010).

Acknowledgements

The authors wish to thank members of GM's and AR's laboratory for helpful discussions and F. Perez and D. Chrétien for critical reading of the manuscript. We thank the PFIC Imaging Facility of the Gustave Roussy institute for help with image acquisition. Core funding for this work was provided by the Gustave Roussy institute and the Inserm. Additional support was provided by grants from the *ATIP/Avenir program/Plan cancer* to GM and from the Natural Sciences and Engineering Research Council of Canada (NSERC) for operating Grant No. RGPIN-2014-06245 to ADR. The work of CJ was supported by the program “Investissements d’Avenir” launched by the French Government and implemented by ANR (ANR-10-LBX-0038, ANR-10-IDEX-0001-02 PSL), by the ANR grant ANR-12-BSV2-0007, and by the Institut Curie.

Author Contributions

N.L., N.E.K. and E.B. performed experiments, analysed results and wrote the manuscript. M.K. helped designing experiments. C.J. and M.M.M. purified tubulin and helped designing experiments. O.P. and E.L.C. designed and performed AFM experiments. G.M. and A.D.R. supervised the study, designed experiments and wrote the manuscript.

Additional Information

Supplementary information accompanies this paper at <http://www.nature.com/srep>

Competing financial interests: The authors declare no competing financial interests.

How to cite this article: Ly, N. *et al.* α TAT1 controls longitudinal spreading of acetylation marks from open microtubules extremities. *Sci. Rep.* **6**, 35624; doi: 10.1038/srep35624 (2016).



This work is licensed under a Creative Commons Attribution 4.0 International License. The images or other third party material in this article are included in the article's Creative Commons license, unless indicated otherwise in the credit line; if the material is not included under the Creative Commons license, users will need to obtain permission from the license holder to reproduce the material. To view a copy of this license, visit <http://creativecommons.org/licenses/by/4.0/>

© The Author(s) 2016