



**HAL**  
open science

## Distribution of iridescent colours in hummingbird communities results from the interplay between selection for camouflage and communication

Hugo Gruson, Marianne Elias, Juan L. Parra, Christine Andraud, Serge Berthier, Claire Doutrelant, Doris Gomez

### ► To cite this version:

Hugo Gruson, Marianne Elias, Juan L. Parra, Christine Andraud, Serge Berthier, et al.. Distribution of iridescent colours in hummingbird communities results from the interplay between selection for camouflage and communication. 2019. hal-02372238v1

**HAL Id: hal-02372238**

**<https://hal.science/hal-02372238v1>**

Preprint submitted on 20 Nov 2019 (v1), last revised 17 Dec 2021 (v3)

**HAL** is a multi-disciplinary open access archive for the deposit and dissemination of scientific research documents, whether they are published or not. The documents may come from teaching and research institutions in France or abroad, or from public or private research centers.

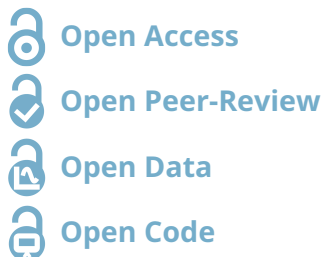
L'archive ouverte pluridisciplinaire **HAL**, est destinée au dépôt et à la diffusion de documents scientifiques de niveau recherche, publiés ou non, émanant des établissements d'enseignement et de recherche français ou étrangers, des laboratoires publics ou privés.

Copyright



# Peer Community In Evolutionary Biology

## RESEARCH ARTICLE



# Distribution of iridescent colours in hummingbird communities results from the interplay between selection for camouflage and communication

Cite as: preprint

Posted: 15th November 2019

Recommender:  
Sébastien Lavergne

Reviewers:  
XXX

Correspondence:  
[hugo.gruson@normalesup.org](mailto:hugo.gruson@normalesup.org)

Hugo Gruson<sup>1</sup>, Marianne Elias<sup>2</sup>, Juan L. Parra<sup>3</sup>, Christine Andraud<sup>4</sup>, Serge Berthier<sup>5</sup>, Claire Doutrelant<sup>1</sup>, & Doris Gomez<sup>1,5</sup>

<sup>1</sup> CEFE, Univ Montpellier, CNRS, Univ Paul Valéry Montpellier 3, EPHE, IRD, Montpellier, France

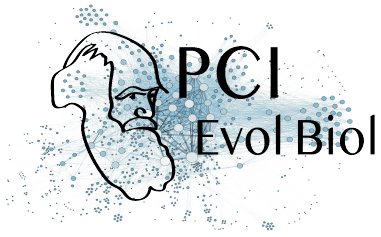
<sup>2</sup> ISYEB, CNRS, MNHN, Sorbonne Université, EPHE, 45 rue Buffon CP50, Paris, France

<sup>3</sup> Grupo de Ecología y Evolución de Vertebrados, Instituto de Biología, Universidad de Antioquia, Medellín, Colombia

<sup>4</sup> CRC, MNHN, Ministère de la Culture et de la Communication, CNRS, Paris, France

<sup>5</sup> INSP, Sorbonne Université, CNRS, Paris, France

This article has been peer-reviewed and recommended by  
*Peer Community In Evolutionary Biology*



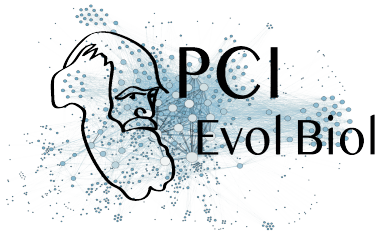
## Abstract

Identification errors between closely related, co-occurring, species may lead to misdirected social interactions such as costly interbreeding or misdirected aggression. This selects for divergence in traits involved in species identification among co-occurring species, resulting from character displacement. On the other hand, predation may select for crypsis, potentially leading co-occurring species that share the same environment and predators to have a similar appearance. However, few studies have explored how these antagonistic processes influence colour at the community level. Here, we assess colour clustering and overdispersion in 189 hummingbird communities, tallying 112 species, across Ecuador and suggest possible evolutionary mechanisms at stake by controlling for species phylogenetic relatedness. In hummingbirds, most colours are iridescent structural colours, defined as colours that change with the illumination or observation angle. Because small variations in the underlying structures can have dramatic effects on the resulting colours and because iridescent structures can produce virtually any hue and brightness, we expect iridescent colours to respond finely to selective pressures. Moreover, we predict that hue angular dependence – a specific aspect of iridescent colours – may be used as an additional channel for species recognition. In our hummingbird assemblages in Ecuador, we find support for colour overdispersion in ventral and facial patches at the community level even after controlling for the phylogeny, especially on iridescence-related traits, suggesting character displacement among co-occurring species. We also find colour clustering at the community level on dorsal patches, suspected to be involved in camouflage, suggesting that the same cryptic colours are selected among co-occurring species.

**Keywords:** Reproductive Character Displacement; Agonistic Character Displacement; Camouflage; Structural Colours; Angle-Dependent Colouration; Community structure; Ecuador

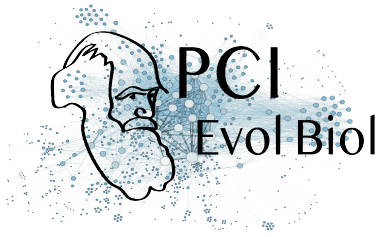
## Introduction

Colour is a complex communication channel widespread among various taxa and involved in many ecological and evolutionary processes [7]. It can be described by multiple variables, including hue (colour in its common sense, such as red, green, blue, etc.) and brightness (average level of grey of a colour, i.e. whether the object is light or dark). Colours can be produced by two non-mutually exclusive means: pigmentary colours are produced by the selective absorption of incoming light by pigments, while structural colours are produced by the interaction of incoming light with nanostructures, causing diffraction, interferences or scattering [68]. Among structural colours, iridescent colours are characterised by a shift in hue with changes in illumination or observation angle [88]. Iridescent colours are found



in many bird families such as Anatidae (ducks) Phasianidae (fowls), Sturnidae (starlings), or Trochilidae (hummingbirds), and thought to be involved in numerous adaptations [24]. But evolution of iridescent colours at the community level remains poorly understood. Yet, evolutionary patterns of iridescent colours, which remain poorly studied and understood, may differ from that of non-iridescent colours. Indeed, as opposed to other types of colours, iridescent colours can produce virtually any hue and are expected to respond more readily and finely to selection, because large changes of hue can be achieved by small changes in the underlying structures [72]. They can also result in directional colours only seen at specific angles, as well as highly reflective colours [65].

Because colours are involved in many different ecological processes, they are subject to multiple selection pressures, often with opposite effects [33]. Colour may indeed increase or decrease detectability of an animal depending on the colour contrast with its surroundings. In particular, colour can reduce predation risk via crypsis or aposematism or serve as a means of species identification. In this case, two opposite evolutionary forces act on colours: (i) On the one hand, species living in the same environment are likely experiencing similar selective pressures, such as predation. The environment is characterised by ambient light and vegetation, which both influence greatly which colours are poorly detectable and which colours are highly detectable [29, 32]. We thus expect co-occurring species to harbour the same, poorly detectable, colours as this would decrease the risk of being detected by predators, thereby causing a clustering pattern in colouration at the community level, all else being equal. This colour clustering can result from convergence between sympatric species (evolutionary process), from environmental filtering (ecological process), i.e. species sorting locally according to the traits they harbour, or a mixture of the two (detailed in table 1). (ii) On the other hand, sympatric closely-related species are more likely to face problems of species recognition, eventually resulting in reproductive interference - a phenomenon where an individual courts or mates with individuals of another species, producing no offspring or low fertility hybrids, leading to costly interbreeding [38]. Species misidentification can also lead to misdirected aggression and costly fighting when individuals compete over resources or territories. Hence, any feature that would enhance species recognition is expected to be selected for. In this context, closely related species living in sympatry should be under strong selective pressure to diverge in traits involved in communication, if divergence enhances species recognition. Divergence can result from a process called character displacement (RCD for reproductive character displacement, ACD for agonistic character displacement; evolutionary process) [8, 9, 37] or from species sorting (ecological process). For ACD, it is worth noting that traits are expected to diverge only in case of moderate ecological competition, whereas they should converge in case of high competition [37, 86]. Multiple empirical studies have shown character displacement for songs (e.g. Gerhardt [31] in frogs and Grant and Grant [35] in birds), or olfactory signals [3]. However, fewer studies have looked at divergence in colour patterns (but see Doutrelant, Paquet, Renoult, Grégoire, Crochet, and Covas [25], Hemingson, Cowman, Hodge, and Bellwood [44], Lukhtanov, Kandul, Plotkin, Dantchenko, Haig,

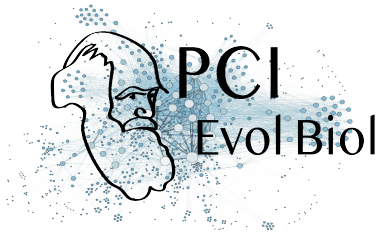


and Pierce [50], Martin, Montgomerie, and Lougheed [53], Naisbit, Jiggins, and Mallet [61], and Sætre, Moum, Bureš, Král, Adamjan, and Moreno [74]). Almost all these studies were at the species level, and at best involved comparison between closely related species. Many of them also did not use objective spectrometry measurements and instead relied on human vision, which did not allow them to analyse colours as perceived by the intended receiver, in the case of this study: birds [6, 16, 27, 59].

In birds, it has been shown that colouration is under different selective pressures depending on the body patch location: dorsal patches, which are exposed to aerial predators, are mainly involved in camouflage while ventral and facial patches are mainly involved in communication [21, 33]. In this study, we test this hypothesis for iridescent colours at the community level by looking at phenotypic structure in hummingbird local assemblages across different body parts. Hummingbirds are an interesting study system to test this hypothesis as various published accounts of sexual displays and aggressive encounters among hummingbirds have made clear that certain feather patches such as the crown and throat are consistently used during these displays [46, 75–78]. On the other hand, colours displayed on the dorsal side of hummingbirds tend to resemble background colours and thus have been suggested to be cryptic [70]. Accordingly, we predict that co-occurring hummingbird species should display similar hues on dorsal patches, leading to phenotypic clustering of hues (i.e. co-occurring species are more similar than expected by chance, prediction 1) and different hues on ventral patches, resulting in a phenotypic overdispersion pattern (i.e. co-occurring species are more dissimilar than expected by chance, prediction 2). For brightness, we can formulate two alternative predictions: on the one hand, it might evolve in the same way as hue, also because of reproductive character displacement and selection for camouflage, leading to the same outcome as for hue (prediction 3, equivalent to predictions 1 and 2 but for brightness). On the other hand, because brightness level positively correlates with signal conspicuousness, poorly detectable signals have similar brightness, and highly detectable signals have similar brightness. Hence, we may instead expect that species co-occurring should converge for brightness on all patches (prediction 3bis) if the same patches are involved in the same ecological process (communication or camouflage).

Compared to other types of colouration, iridescent colours might enable species recognition on another dimension in the sensory space. Two species can have the same hue or brightness at a given angle but can differ at another angle, via an additional variable we call "hue shift". Because hue shift cannot be seen at long distances, it may allow species to diverge without interfering with camouflage against predators [24, 90]. Accordingly, we predict overdispersion for hue shift not only on ventral patches, but also on dorsal patches (prediction 4). However, hue shift is often highly correlated with hue due to the optics underlying iridescence (Dakin and Montgomerie [17] for example reported  $R^2 \geq 0.95$  for the correlation between hue and hue shift). We test this correlation with the data from this article and discuss how it may impact our results.

At the community level, we predict that community colour volume (also known as func-



tional richness  $FRic$  in functional ecology [87]) and brightness range increase with species richness more than expected in a random species assemblage (null model) because co-occurring species would use different colours (hue or brightness) (prediction 5).

Here we test our five predictions by quantifying both iridescent and non-iridescent colours of 189 hummingbird assemblages in Ecuador that include 112 species and span a large variety of habitats, and by assessing the phenotypic structure (clustering, random distribution, overdispersion of colours) and investigate the underlying processes by taking into account species phylogenetic relatedness within these assemblages. Comparing the uncorrected and the phylogenetically-corrected phenotypic structure of hummingbird communities will allow us to identify which mechanisms (character displacement, species sorting with mutual exclusion of similar species, environmental filtering; as detailed in table 1) underlie the community structure of iridescent colours in hummingbirds.

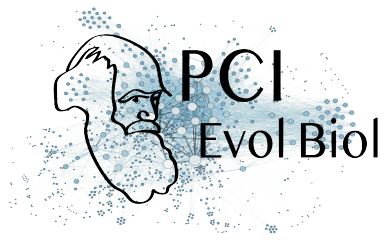
## Materials and methods

All scripts and data used to produce the results and figures from this article are available at <https://doi.org/10.5281/zenodo.3355444>.

### Community data

Hummingbirds are particularly suited as a study system to explore the possible effect of reproductive character displacement on iridescent colours because (i) they display a large variety of hues [20] and all species harbour some iridescent patches, many of which have a very strong angular dependence, rapidly shifting from e.g. pink to green or black [22, 26] (but note that many hummingbirds species also have non-iridescent, pigmentary, patches), (ii) they belong to a very speciose family whose phylogeny is well established and readily available [48, 55], (iii) they live only in the Americas, especially in the tropics where numerous species can coexist locally [20] (iv) there is an extensive documentation of hybridisation between co-occurring species (see for example [36, 79] for our region of interest), which creates the perfect opportunity to study reproductive interference and (v) almost all species are available in museum collections and their colour can be objectively measured using spectrometric measurements [23].

Presence/absence data for hummingbird assemblages at 189 sites in Ecuador (see map in fig. S3) were compiled from data in peer-reviewed papers and reports from environmental organisations [34]. These sites cover a large variety of elevation ranges (fig. S3) and habitats [34, 69]. This dataset was previously thoroughly reviewed by comparing the observations with the known elevational and geographical ranges of each species [69] and includes observations of 112 of the 132 hummingbirds species found in Ecuador [73].



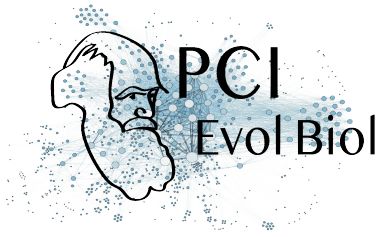
## Colour measurements and analyses

For each one of the 112 species, we borrowed one adult male in good condition from either the Museum National d'Histoire Naturelle (MNHN) in Paris or the Musée des Confluences, in Lyon (full list in Online Supplementary Information). Previous studies show that even low sampling per species can accurately capture colour characteristics of the species [18]. Additionally, preliminary analyses on an independent dataset of 834 points across 18 hummingbird species, with up to 5 individuals measured by species, showed that intraspecific coefficient of variation (standard deviation divided by the average) of hue is very low (1.69 %) but could be higher for brightness (23.18 %) (detailed values for each species in table S3). When comparing intra- to interspecific variation, intraspecific however always remains negligible compared to interspecific variation (intra-class coefficient reported in table S3). We ensured that the specimen colouration was representative of the other specimens available in the collections to the human eye. When multiple subspecies were living in the area where presence was recorded, we randomly picked one of them. Whenever possible, we picked specimens collected in Ecuador (88 % of the cases), or when not available in neighbouring countries, such as Colombia or North Peru (11 % of the cases), as to minimise the effect of regional variability in colour.

We consistently took spectral reflectance measurements on the eight following patches (described in fig. S1): crown, back, rump, tail, throat, breast, belly, wing. We also made additional measurements on patches that visually differed in colouration from these eight main ones, as in Gomez and Théry [33] and Doutrelant, Paquet, Renoult, Grégoire, Crochet, and Covas [25].

We measured reflectance using a setup similar to Meadows, Morehouse, Rutowski, Douglas, and McGraw [57], relying on the use of two separate optical fibres. Light was conducted from an Oceanoptics DH-2000 lamp emitting over the 300-700 nm range of wavelengths to which birds are sensitive [11] to the sample through an illuminating FC-UV200-2-1.5 x 100 optical fibre (named illumination fibre). Light reflected by the sample was then collected by a second identical optical fibre (named collection fibre) and conducted toward an Oceanoptics USB4000 spectrophotometer (used with the SpectraSuite 2.0.162 software). This setup allows for a precise independent rotation of the illumination and the collection fibres, necessary for the measurements of iridescent colours [65]. For more details about the measurement conditions as recommended in White, Dalrymple, Noble, O'Hanlon, Zurek, and Umbers [89], see the supplementary materials (ESM).

For every patch, we recorded a first reflectance spectrum at the position of the fibres which maximised total reflectance. To measure hue angle dependency (iridescence), we then moved both fibres  $10^\circ$  away from the previous position and recorded a second spectrum, as in Meadows, Roudybush, and McGraw [58]. More recent measurement methods revealed that it would be more accurate to keep the angular span between the illumination and collection fibres constant [39]. We however confirmed that this did not impact our results by run-

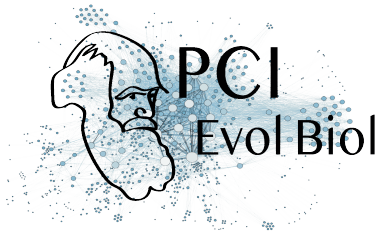


ning our analyses once with all data and once with only data at a given angular span (which represented 94% of the total data). All measurements were performed in a dark room with temperature control. Recorded spectra were normalised by an Avantes WS-1 white standard and a measurement with the lamp shut down (dark reference) and integration times were determined for each sample as to maximise the intensity of the signal without saturating the spectrometer. Final values were averaged over five consecutive measurements and spectra were smoothed using a loess algorithm and interpolated every 1 nm and negative values were set to zero using the R package *pavo* [52].

We analysed spectra using Endler and Mielke [30] model with relative quantum catches  $Q_i$  (without Fechner's law). All birds are tetrachromats and can see light with wavelengths from 300 to 700 nm, which includes ultra-violet light (UV) [66]. But different bird species vary in their sensitivity [63]: some are UV-sensitive (UVS) while others are violet-sensitive (VS). Literature on colour vision in hummingbirds suggests that both types are found within the family (see Chen and Goldsmith [11] and Herrera, Zagal, Diaz, Fernández, Vielma, Cure, Martinez, Bozinovic, and Palacios [45] for UVS species and Ödeen and Håstad [64] for VS species). Because we did not have enough information to compute ancestral states and vision type for all species in our study and because it was found to have little influence in previous studies [21, 33], we ran our analyses as if all species were VS, using the spectral sensitivities of a typical VS bird, *Puffinus pacificus* [43], whose photoreceptor absorbances match closely those reported for hummingbirds [64]. We used different illuminants defined in Endler [29], depending on the habitat of the species described in Stotz, Fitzpatrick, Parker III, and Moskovits [83] (detailed in SI): "large gaps" illumination was used for species living in the canopy while "forest shade" was used for species living in the understory. Hue was a tridimensional variable defined by the position ( $x$ ,  $y$  and  $z$ ) of the reflectance spectrum in the tetrahedron representing bird colour vision space [30] and brightness was defined as in Endler and Mielke [30] (perceived intensity of colour, also sometimes referred to as luminance). We ensured that all indices were repeatable (table S1) by measuring twice the same individual and patch on 20 patches and computing the intra-class coefficient (ICC) with the *rptR* R package [82]. We add another variable to describe iridescence: hue shift, defined as the difference between hue at maximum reflectance and hue at  $10^\circ$  away from maximum reflectance, in a similar fashion to Dakin and Montgomerie [17]. Because it is the difference of two tridimensional variables (hue at the position where reflectance was maximum and hue at  $10^\circ$  away), hue shift is tridimensional as well. Dakin and Montgomerie [17] found a high correlation between hue and hue shift at the intraspecific level in the peacock *Pavo cristatus*, we also report a high correlation at the interspecific level in hummingbirds by performing a linear regression in  $\mathbb{R}^3$  between hue and hue shift ( $R^2 = 0.51$ ,  $F(3; 1372) = 469.7$ ,  $p < 0.0001$ ). New measurement methods have since been developed and propose a new definition for hue shift which is not correlated to hue but they were not available at the time of this study [39].

We analysed the colour volume for each species by measuring the convex hull volume of all colour patches on the bird, as suggested in Stoddard and Prum [81]. We compared the re-





relationship between the colour volume of a community and the number of species within this community relative to a null model (prediction 5) obtained by creating random assemblages from a species pool containing all species from all communities. In other words, actual assemblages are compared to fictional assemblages with exactly the same number of species but no abiotic or biotic constraints on the species composition.

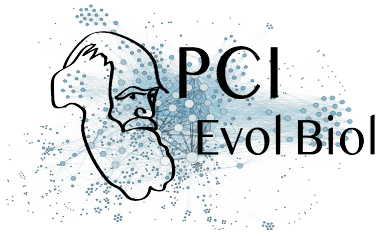
However, the colour volume does not take into account the patch location on the bird body, raising several concerns. First, two species could use the same colour but at different places on their body. They would then look different to an observer but not identified as such in this analysis. Additionally, we expect different evolutionary signals on different patches, that could even each other out, and blur the outcome at the bird level. For these reasons, we also performed our analyses separately for each one of the following eight patches: crown, back, rump, tail, throat, breast, belly, wing (locations shown in fig. S1).

### Trochilidae phylogeny and comparative analyses

A distribution of 100 phylogenetic trees of the Trochilidae family was downloaded from birdtree.org [48] to take into account phylogenetic uncertainty in the comparative analyses [67]. The 112 species included in this study constitute a fairly even sampling of the hummingbird phylogeny (fig. S2).

We used the method developed by Hardy and Senterre [42] and Baraloto, Hardy, Paine, Dexter, Cruaud, Dunning, Gonzalez, Molino, Sabatier, Savolainen, and Chave [5] to analyse respectively the phylogenetic ( $\Pi_{ST}$ ) and phenotypic ( $\tau_{ST}$ ) structures of the hummingbird communities of Ecuador (clustering or overdispersion). This method relies on computing indices inspired by the Simpson index and the fixation index  $F_{ST}$ , comparing the observed diversity within and between communities. For phylogeny,  $\Pi_{ST}$  can reveal phylogenetic clustering ( $\Pi_{ST} > 0$ ) or phylogenetic overdispersion ( $\Pi_{ST} < 0$ ) within communities. Likewise, for phenotypic traits,  $\tau_{ST}$  can reveal phenotypic clustering ( $\tau_{ST} > 0$ ) or phenotypic overdispersion ( $\tau_{ST} < 0$ ) within communities. Statistical significance of overdispersion or clustering is obtained from comparing the observed value to that obtained for the same patch location from 1000 random communities (created by drawing from the total species pool, using algorithm 1s from Hardy [41], which keeps the local species richness per site constant). This approach compares the phenotypic structure to what would be expected by chance.

To disentangle the relative effect of ecological (species sorting) and evolutionary mechanisms (selection), we also perform our analyses by taking into account the phylogenetic relationships between species. If the species in the community are more clustered or overdispersed than expected given their phylogenetic relationships, this is taken as evidence that the trait has not evolved in a Brownian fashion (detailed in table 1). To this end, we used the `decouple` function [19], which returns phylogenetically predicted and residual trait values by performing a linear regression of individual trait values explained by the phylogeny. We computed the value of  $\tau_{ST}$  on trait values decoupled from the phylogeny. This value is hereafter



denoted  $dc\tau_{ST}$ . Similarly to the classical  $\tau_{ST}$ , the sign of  $dc\tau_{ST}$  indicates phenotypic clustering ( $dc\tau_{ST} > 0$ ) or overdispersion ( $dc\tau_{ST} < 0$ ) once the effect of the phylogenetic structure of the communities has been decoupled.

Analyses performed on a tree distribution ( $\Pi_{ST}$  and  $dc\tau_{ST}$ ) with  $n$  trees return a distribution of  $n$  statistics values and  $n$  p-values  $p_i$ . We summarised this information by computing the median of the statistics and the overall p-value  $p$  by using Jost's formula [4]:

$$p = k \sum_{i=0}^{n-1} \frac{(-\ln(k))^i}{i!} \quad \text{where } k = \prod_{i=1}^n p_i \quad (1)$$

## Results

We find a strong phylogenetic clustering within communities ( $\Pi_{ST} = 0.062 > 0$ ,  $p < 0.0001$ ), indicating that co-occurring species are more closely related than expected by chance.

### Phenotypic structure of the communities (predictions 1 - 4)

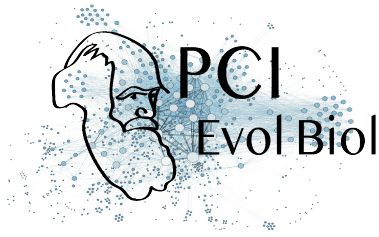
When looking at the bird entire body (when all patches are included simultaneously) by computing the overlap of the colour volumes, we did not find any phenotypic structure.

When the different major patches (crown, back, rump, tail, throat, breast, belly and wing) are examined separately (table 2 and table S2), we find clustering ( $\tau_{ST} > 0$ ) in hue and hue shift on the back, rump, tail, belly and wing. Once we decouple the effect of the shared evolutionary history, we find clustering on the crown and the back ( $dc\tau_{ST} > 0$ ) but overdispersion on the belly for both hue and hue shift ( $dc\tau_{ST} < 0$ ). Hue shift is also overdispersed on the rump and the tail ( $dc\tau_{ST} < 0$ ). There is no phenotypic structure on the throat, breast or wing for hue and hue shift nor on the rump or the tail for hue.

We find no phenotypic structure (neither clustering nor overdispersion) for brightness on any patches before phylogenetic correction. After phylogenetic correction, brightness values for the throat, breast and belly are clustered among co-occurring species ( $dc\tau_{ST} > 0$ ) but show no phenotypic structure for the crown, the back, the wing and the tail.

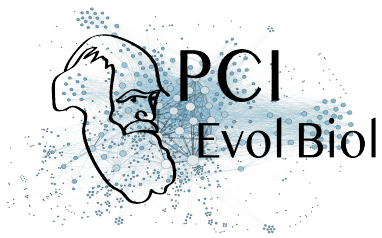
### Effect of community species richness on colour characteristics (prediction 5)

We found that the brightness range within a community increased in the same way as a null model built from random species assemblages (fig. 1b). For colour volume, we find some outliers with a higher colour volume than expected for community with the same number of species (fig. 1a).



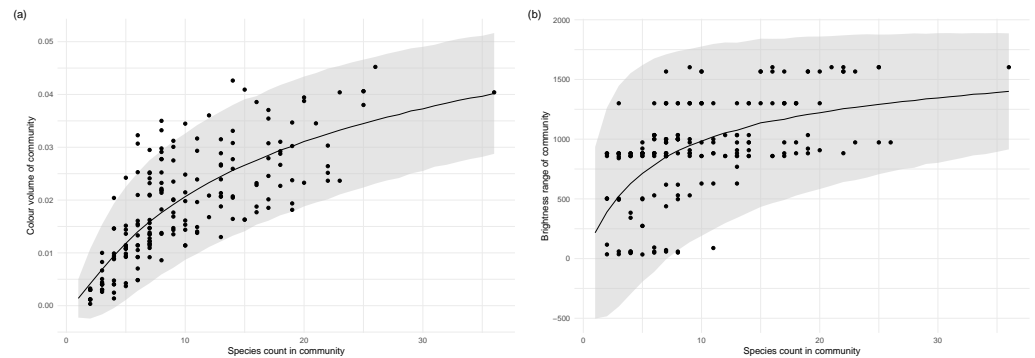
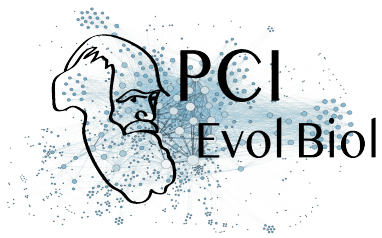
	$\tau_{ST} < 0$	$\tau_{ST} = 0$	$\tau_{ST} > 0$
	<b>Phenotypic overdispersion</b> Co-occurring species are less similar than expected by chance because of character displacement.	<b>No community structure</b> Co-occurring species are not more neither less similar than expected by chance despite character displacement because closely related species co-occur more often than expected at random ( <b>phylogenetic clustering</b> ; $\Pi_{ST} > 0$ ).	<b>Phenotypic clustering</b> Co-occurring species are more similar than expected by chance despite character displacement because closely related species co-occur more often than expected at random ( <b>phylogenetic clustering</b> ; $\Pi_{ST} > 0$ ).
$d_{c\tau_{ST}} < 0$	<b>Character displacement (divergence):</b> co-occurring species are more dissimilar than expected given their phylogenetic relationships, which means they evolved towards dissimilarity in their colours.		
$d_{c\tau_{ST}} = 0$	<b>Competitive exclusion:</b> co-occurring species are more dissimilar than expected by chance because distantly-related (and therefore dissimilar) species co-occur more often than expected at random ( <b>phylogenetic overdispersion</b> ; $\Pi_{ST} < 0$ ).		<b>Environmental filtering:</b> co-occurring species are more similar than expected by chance because closely-related (and therefore similar) species co-occur more often than expected at random ( <b>phylogenetic clustering</b> ; $\Pi_{ST} > 0$ ).
$d_{c\tau_{ST}} > 0$	<b>Evolutionary convergence :</b> co-occurring species are more similar than expected given their phylogenetic relationships, which means they evolved towards similarity in their colours.		

**Table 1.** Summary of the different evolutionary and ecological scenarios and their results in terms of values of  $\tau_{ST}$  and decoupled  $d_{c\tau_{ST}}$ .



Variable	Phenotypic structure ( $\tau_{ST}$ )	Decoupled phenotypic structure ( $dc\tau_{ST}$ )
Hue		
Brightness		
Hue shift (=iridescence)		

**Table 2.** Phenotypic structure of hummingbird communities for different variables (hue, brightness and hue shift) on the patches studied (crown, back, rump, tail, throat, breast, belly, wing; names and locations illustrated in fig. S1). Hue is a tridimensional variable defined by the reflectance spectrum position  $x$ ,  $y$  and  $z$  in the tetrahedron representing avian colour space. Blue plus signs + indicate significant phenotypic clustering ( $\tau_{ST}$  or  $dc\tau_{ST} > 0$ ), orange minus signs - indicate significant phenotypic overdispersion ( $\tau_{ST}$  or  $dc\tau_{ST} < 0$ ), and green zeros 0 represent the absence of phenotypic structure. The left column shows the raw phenotypic structure of the community (columns in table 1), which may be influenced by the phylogenetic structure while the right column shows the phenotypic structure of the community, decoupled from all effects caused by the phylogeny (rows in table 1). By comparing the values of  $\tau_{ST}$  and  $dc\tau_{ST}$  for each trait colour variable (hue, brightness and hue shift), we can assume a probable evolutionary scenario for each patch, based on the explanation in table 1. Exact values for the statistics are available in table S2.



**Figure 1.** (a) Community total colour volume and (b) brightness range increase with the number of species within the community. Each point is a community. The black solid line represents the mean value of (a) colour volume or (b) brightness range from 10 000 random communities with a given species count (null model) and the gray ribbon represents two standard deviations from the mean of the null model.

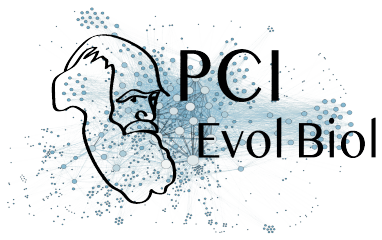
## Discussion

Our findings are consistent with our hypothesis that colour structure within hummingbird communities likely results from the interplay between two selective pressures, acting in opposite directions: selection by the local environment (e.g. camouflage from predators, leading to phenotypic clustering on dorsal patches, and selection for species recognition, leading to phenotypic overdispersion on ventral and facial patches. We also discuss other possible effects that might have contributed to the observed pattern.

### Evidence for different evolutionary scenarios depending on patch location

At the entire bird level (i.e. when pooling together all patches), we did not find any phenotypic structure. But as mentioned earlier, this was expected since different locations on the birds are thought to be under different selection regimes [21, 33].

In accordance with our prediction 5, community colour volume (as estimated by the convex hull of hue and brightness range within a community) increases slightly faster with the number of species in the community than predicted by a null model. This suggests that co-occurring species in these communities tend to use more similar colours than expected by chance. However, this is not the case for the majority of communities, where co-occurring species do not use more nor less similar colours than expected by chance. This is further confirmed by the absence of phenotypic structure on the colour volume and the brightness when the effect of the phylogeny is not decoupled.

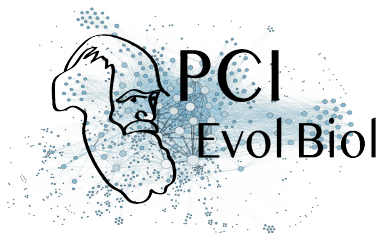


This could be the consequence of similar selective pressures between the communities we studied, leading colours in all assemblages to be randomly determined. This is however not very likely because the communities we studied differ a lot in both their vegetation background and therefore in the pressure for crypsis [34] and in their species composition. A more likely hypothesis is that co-occurring species tend to use the same colours but not necessarily on the same patches, which would also explain the absence of phenotypic structure when we pool all patches without taking into account their location. This is confirmed by our analysis patch by patch, where we find either clustering or overdispersion depending on the location of the patch.

### **Selection for convergence and phenotypic clustering**

In accordance with our first two predictions, co-occurring hummingbird species tend to have similar hues on patches more likely dedicated to camouflage (back, rump, tail, wing; prediction 1) but not on patches more likely used in communication (crown, throat, breast; prediction 2), as shown in table 2 and table S2. This new result for iridescent colours matches what has been previously described for non-iridescent colours [21, 33]. The phenotypic clustering observed for hue on the rump, the tail and the wing vanishes after decoupling the clustering effect due to phylogenetic structure. This suggests that phenotypic clustering of hue on the rump, the tail and the wing is not caused by convergent evolution of co-occurring species but by environmental filtering, leading related, similar-looking species to live in the same area (as explained in table 1). This is confirmed by the high value of phylogenetic clustering. This sign of phylogenetic clustering complements the results from Graham, Parra, Rahbek, and McGuire [34] on the same dataset. We showed that intra-community species relatedness is high compared to inter-community species relatedness ( $II_{ST}$ ), while they showed that intra-community species relatedness (Net Relatedness Index) is higher than expected from random assemblages in 71 % of the cases [34]. This phylogenetic clustering may be caused by a strong niche conservatism but our study cannot discriminate whether such niche conservatism involves colour or other ecological traits. Our data does not allow us to assert with certainty the evolutionary history from the pattern we observe but the predominance of green and brown hues on the back and the wing respectively, as shown in fig. S4, hints to a role in camouflage. Alternatively, this phylogenetic clustering could be caused by hummingbirds' costly hovering flight at high elevation due to weaker lift caused by the decreasing atmospheric pressure [1, 2, 84], high foraging specialisation [49] or low dispersal ability, but this last hypothesis remains quite unlikely as the rare studies on this topic have shown that different hummingbird species display a wide variation in their dispersal ability [10, 60].

Contrary to our prediction 2, we also find clustering of hue on the belly before the use of the `decouple` function. However, the fact that it turns into overdispersion after the use of the `decouple` function, and not simply into a random phenotypic structure (as opposed to the rump, the tail and the wing mentioned just before), suggests this initial clustering (right



column in table 1) is mainly caused by environmental filtering on another trait but that hue on the belly is still under selection for divergence (first row in table 1). This other trait may be the colour of another patch or other ecological traits, as we explained previously.

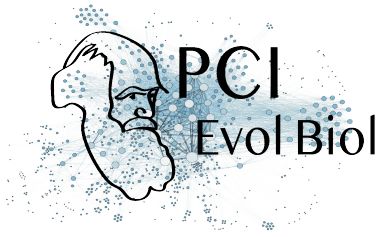
We found a significant clustering of brightness on the throat, breast and belly after controlling for the phylogeny, indicating that brightness on those patches is more similar than expected given the phylogeny among co-occurring species (prediction 3bis). This suggests that the same patches have been selected to be involved either in communication or in camouflage among species living in the same environment. This is seen after controlling for the phylogeny and it is therefore not caused by the phylogenetic relatedness of co-occurring species. This is not surprising as many studies showed the paramount importance of the throat in the courtship display of many hummingbird species [46, 75–78] Two main hypotheses can explain why co-occurring species tend to communicate (or camouflage themselves) using the same patches: (i) There may be selective pressures for the use of specific patches in camouflage in a given environment (e. g., patches that are more exposed to predators' sight). (ii) Convergence in patches used in communication may be selected because it improves competitor identification in the case of a strong ecological niche overlap (convergence by agonistic character displacement as shown in Grether, Losin, Anderson, and Okamoto [37] and Tobias, Planqué, Cram, and Seddon [85]).

All those results suggest a strong effect of the environment in the evolution of colour in agreement with McNaught and Owens [56] who found that bird plumage colour was due to the light environment and not to reproductive character displacement in Australian birds. However, we do not find clustering on all patches, which suggests that, for some patches, the effect of habitat pressure is somehow limited or counterbalanced by reproductive or agonistic character displacement. On the contrary, for some patches, we found patterns that are likely the result of character displacement.

### **Character displacement and phenotypic overdispersion**

In agreement with our prediction 2, after decoupling the effect of the phylogeny, there is overdispersion of hue on the belly, likely caused by character displacement (table 1). At a completely different taxonomic scale, focusing on a single hummingbird genus (*Coeligena*) with 11 species, Parra [70] also found that the belly was always involved in the difference in hue between subspecies. It was sometimes even the only patch causing those differences, as for example between *Coeligena torquata fulgidigula* and *Coeligena torquata torquata*. This suggests that the interspecific divergence we found on the belly at the community level on the whole Trochilidae family can be observed at different geographic and taxonomic scales, and even between subspecies of the same species.

As predicted, we also find more phenotypic overdispersion for hue shift than hue after decoupling the effect of the phylogeny, for example, on the rump and on the tail (prediction 4). It is possible that hue shift is less sensitive to selection for convergence because it may

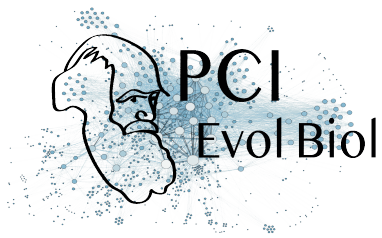


vary without disturbing camouflage efficacy. However, we did not find the expected relaxing of clustering on hue shift on patches such as the back. This is likely caused by the fact that hue shift is highly correlated with hue, as found in this study and in Dakin and Montgomerie [17], who used the same indices to quantify iridescence. This correlation is due to the optics controlling iridescence, meaning that species that display similar hues should also display the same hue shift if they use the same underlying multilayer structures. The fact that the correlation is not perfect and that we nonetheless get different phenotypic patterns for hue and hue shift on some patches suggests that co-occurring species use different multilayer structures (as recently confirmed by [40]), which can produce different iridescent effects while displaying the same hue (functional convergence on hue).

Against our prediction 2, we did not find phenotypic overdispersion on any of the colour variables on patches such as the throat or the crown, that are thought to be sexually selected and often used in courtship displays [15, 78]. Several hypotheses can explain this fact: (i) The overdispersion on some patches (hue on the belly and hue shift on the rump and tail) is sufficient to enable species recognition. (ii) The current phenotypic structure, which is neither overdispersed nor clustered, on those patches is sufficient to enable species recognition. Indeed, the absence of phenotypic overdispersion does not mean that species look the same. It simply means that colour differences between species living in the same community and species in different communities occur in similar ranges. This difference may be sufficient to relax the selective pressure towards reproductive character displacement. (iii) The pressure towards overdispersion is balanced by habitat filtering (for both ventral and dorsal patches), resulting in no apparent phenotypic structure. The latter hypothesis was also a candidate explanation of the pattern found by Martin, Montgomerie, and Loughheed [53], where sympatric closely related species are more divergent than allopatric ones, but only when the range overlap is limited. They suggested that local adaptation could hinder divergence when species ranges was exactly the same. (iv) Species recognition is achieved by additional means and divergence occurs on others traits, such as modified feathers [28], song [51, 54] or non-vocal noises [12–14] and size. Notably, different species of hummingbirds can have very different courtship behaviour: leks for hermits [71, 80], dives and shuttle displays for bees [13, 47, 77], for instance.

Taken together, our results suggest that hummingbird iridescent colours are determined by different evolutionary mechanisms depending on their location. Within a community, co-occurring hummingbird species tend to display the same hues on dorsal patches which is what we expect if colour on these patches is mainly driven by selective pressures related to the local environment, such as selection for crypsis by predators, causing phenotypic clustering at the community level. This phenotypic clustering does not seem to be caused by adaptive convergence on colours but rather by environmental filtering perhaps linked to other ecological traits such as elevation tolerance or flight ability. In spite this suspected environmental filtering, there is overdispersion for hue on the belly and hue shift on the rump and the tail. This suggest a possible role of character displacement, which could mean that iri-





descent could be used a way to enable species recognition without affecting camouflage efficacy of birds, by opening up a new dimension in the sensory space: hue shift.

## Data accessibility

Data are available online: <https://doi.org/10.5281/zenodo.3355443>

## Acknowledgments

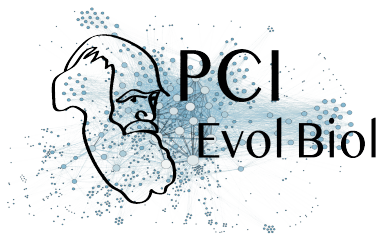
This project heavily relied on museum specimens which were made available by the work of collection curators: Patrick Boussès, Anne Previato, and Jérôme Fuchs (Muséum National d'Histoire Naturelle), Cédric Audibert and Harold Labrique (Musée des Confluences). J.L.P was funded by a Colombian Administrative Department for Science and Technology – Colciencias Grant code 111571250482 – contract number 248-2016. We also thank PCI recommender Sebastien Lavergne and two anonymous reviewers for their comments which helped us improve this manuscript. Version 5 of this preprint has been peer-reviewed and recommended by Peer Community In Evolutionary Biology (<https://doi.org/10.24072/pci.evolbiol.100086>).

## Conflict of interest disclosure

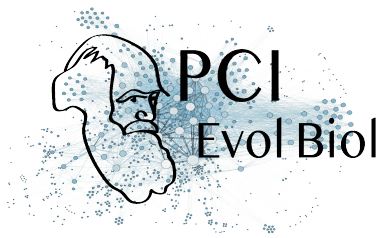
The authors of this preprint declare that they have no financial conflict of interest with the content of this article. Marianne Elias is part of the managing board of PCIEvolBiol and is one of the PCIEvolBiol recommenders.

## References

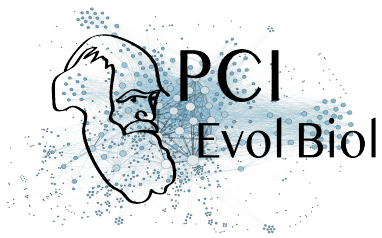
- [1] Altshuler DL, Dudley R, and McGuire JA. Resolution of a paradox: Hummingbird flight at high elevation does not come without a cost. *Proceedings of the National Academy of Sciences* 101 (2004), 17731–17736. doi: 10.1073/pnas.0405260101. pmid: 15598748.
- [2] Altshuler DL, Stiles FG, and Dudley R. Of hummingbirds and helicopters: hovering costs, competitive ability, and foraging strategies. *The American Naturalist* 163 (2004), 16–25. doi: 10.1086/380511. pmid: 14767833.
- [3] Bacquet PMB, Brattström O, Wang HL, Allen CE, Löfstedt C, Brakefield PM, and Nieberding CM. Selection on male sex pheromone composition contributes to butterfly reproductive isolation. *Proceedings of the Royal Society B: Biological Sciences* 282 (2015), 20142734. doi: 10.1098/rspb.2014.2734. pmid: 25740889.



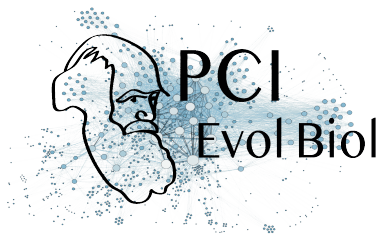
- [4] Balasubramanian VN, Chakraborty S, and Panchanathan S. Conformal predictions for information fusion. *Annals of Mathematics and Artificial Intelligence* 74 (2015), 45–65. doi: 10.1007/s10472-013-9392-4.
- [5] Baraloto C, Hardy OJ, Paine CET, Dexter KG, Cruaud C, Dunning LT, Gonzalez MA, Molino JF, Sabatier D, Savolainen V, and Chave J. Using functional traits and phylogenetic trees to examine the assembly of tropical tree communities. *Journal of Ecology* 100 (2012), 690–701. doi: 10.1111/j.1365-2745.2012.01966.x.
- [6] Bennett ATD, Cuthill IC, and Norris KJ. Sexual selection and the mismeasure of color. *The American Naturalist* 144 (1994), 848–860. doi: 10.1086/285711.
- [7] Bradbury JW and Vehrencamp SL. *Principles of animal communication*. 2. ed. Sunderland, Mass: Sinauer Associates, 2011. 697 pp. isbn: 978-0-87893-045-6.
- [8] Brown WL and Wilson EO. Character displacement. *Systematic Biology* 5 (1956), 49–64. doi: 10.2307/2411924.
- [9] Butlin R. Speciation by reinforcement. *Trends in Ecology & Evolution* 2 (1987), 8–13. doi: 10.1016/0169-5347(87)90193-5.
- [10] Céspedes LN, Pavan LI, Hazlehurst JA, and Jankowski JE. The behavior and diet of the Shining Sunbeam (*Aglaeactis cupripennis*): A territorial high-elevation hummingbird. *The Wilson Journal of Ornithology* 131 (2019), 24–34. doi: 10.1676/18-79.
- [11] Chen DM and Goldsmith TH. Four spectral classes of cone in the retinas of birds. *Journal of Comparative Physiology A* 159 (1986), 473–479. doi: 10.1007/BF00604167.
- [12] Clark CJ. Wing, tail, and vocal contributions to the complex acoustic signals of courting Calliope hummingbirds. *Current Zoology* 57 (2011), 187–196. doi: 10.1093/czoolo/57.2.187.
- [13] Clark CJ, Elias DO, and Prum RO. Aeroelastic flutter produces hummingbird feather songs. *Science* 333 (2011), 1430–1433. doi: 10.1126/science.1205222. pmid: 21903810.
- [14] Clark CJ and Feo TJ. The Anna's hummingbird chirps with its tail: a new mechanism of sonation in birds. *Proceedings of the Royal Society of London B: Biological Sciences* 275 (2008), 955–962. doi: 10.1098/rspb.2007.1619. pmid: 18230592.
- [15] Clark CJ, Feo TJ, and Escalante I. Courtship displays and natural history of scintillant (*Selasphorus scintilla*) and volcano (*S. flammula*) hummingbirds. *The Wilson Journal of Ornithology* 123 (2011), 218–228. doi: 10.1676/10-076.1.
- [16] Cuthill IC, Bennett ATD, Partridge JC, and Maier EJ. Plumage reflectance and the objective assessment of avian sexual dichromatism. *The American Naturalist* 153 (1999), 183–200. doi: 10.1086/303160.
- [17] Dakin R and Montgomerie R. Eye for an eyespot: how iridescent plumage ocelli influence peacock mating success. *Behavioral Ecology* 24 (2013), 1048–1057. doi: 10.1093/beheco/art045.



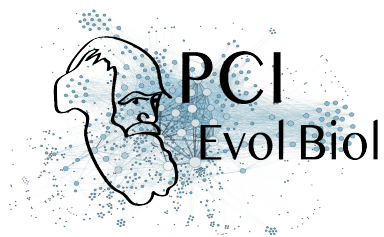
- [18] Dalrymple RL, Hui FKC, Flores-Moreno H, Kemp DJ, and Moles AT. Roses are red, violets are blue – so how much replication should you do? An assessment of variation in the colour of flowers and birds. *Biological Journal of the Linnean Society* 114 (2015), 69–81. doi: 10.1111/bij.12402.
- [19] De Bello F, Šmilauer P, Diniz-Filho JAF, Carmona CP, Lososová Z, Herben T, and Götzenberger L. Decoupling phylogenetic and functional diversity to reveal hidden signals in community assembly. *Methods in Ecology and Evolution* 8 (2017), 1200–1211. doi: 10.1111/2041-210X.12735.
- [20] Del Hoyo J, Elliott A, Sargatal J, Christie DA, and de Juana E. *Handbook of the Birds of the World Alive*. 2017. url: hbw.com.
- [21] Delhey K. Revealing the colourful side of birds: Spatial distribution of conspicuous plumage colours on the body of Australian birds. *Journal of Avian Biology* (2019). doi: 10.1111/jav.02222.
- [22] Dorst J. *Recherches sur la structure des plumes des trochilidés*. Paris: Université de Paris, 1951. 260 pp.
- [23] Doucet SM and Hill GE. Do museum specimens accurately represent wild birds? A case study of carotenoid, melanin, and structural colours in long-tailed manakins *Chiroxiphia linearis*. *Journal of Avian Biology* 40 (2009), 146–156. doi: 10.1111/j.1600-048X.2009.03763.x.
- [24] Doucet SM and Meadows MG. Iridescence: a functional perspective. *Journal of The Royal Society Interface* 6 (Suppl 2 2009), S115–S132. doi: 10.1098/rsif.2008.0395.focus. pmid: 19336344.
- [25] Doutrelant C, Paquet M, Renoult JP, Grégoire A, Crochet PA, and Covas R. Worldwide patterns of bird colouration on islands. *Ecology Letters* 19 (2016), 537–545. doi: 10.1111/ele.12588.
- [26] Dürrer H. *Schillerfarben der Vogelfeder als Evolutionsproblem*. Medizinischen Fakultät der Universität Basel, 1977.
- [27] Eaton MD. Human vision fails to distinguish widespread sexual dichromatism among sexually “monochromatic” birds. *Proceedings of the National Academy of Sciences* 102 (2005), 10942–10946. doi: 10.1073/pnas.0501891102. pmid: 16033870.
- [28] Eliason CM, Shawkey MD, and Clarke JA. Evolutionary shifts in the melanin-based color system of birds. *Evolution* 70 (2016), 445–454. doi: 10.1111/evo.12855. pmid: 26044706.
- [29] Endler JA. The color of light in forests and its implications. *Ecological Monographs* 63 (1993), 1–27. doi: 10.2307/2937121.
- [30] Endler JA and Mielke PW. Comparing entire colour patterns as birds see them. *Biological Journal of the Linnean Society* 86 (2005), 405–431. doi: 10.1111/j.1095-8312.2005.00540.x.



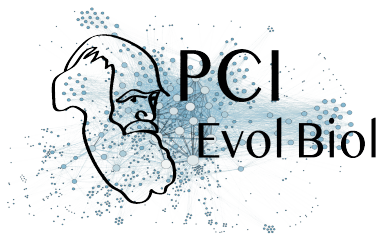
- [31] Gerhardt HC. Reproductive character displacement of female mate choice in the grey treefrog, *Hyla chrysoscelis*. *Animal Behaviour* 47 (1994), 959–969. doi: 10.1006/anbe.1994.1127.
- [32] Gomez D and Théry M. Influence of ambient light on the evolution of colour signals: comparative analysis of a Neotropical rainforest bird community. *Ecology Letters* 7 (2004), 279–284. doi: 10.1111/j.1461-0248.2004.00584.x.
- [33] Gomez D and Théry M. Simultaneous crypsis and conspicuousness in color patterns: comparative analysis of a neotropical rainforest bird community. *The American Naturalist* 169 (2007), S42–S61. doi: 10.1086/510138.
- [34] Graham CH, Parra JL, Rahbek C, and McGuire JA. Phylogenetic structure in tropical hummingbird communities. *Proceedings of the National Academy of Sciences* 106 (Supplement 2 2009), 19673–19678. doi: 10.1073/pnas.0901649106. pmid: 19805042.
- [35] Grant BR and Grant PR. Songs of Darwin’s finches diverge when a new species enters the community. *Proceedings of the National Academy of Sciences* 107 (2010), 20156–20163. doi: 10.1073/pnas.1015115107. pmid: 21048082.
- [36] Graves GR and Zusi RL. An intergeneric hybrid hummingbird (*Heliodoxa leadbeateri* x *Heliangelus amethysticollis*) from Northern Colombia. *The Condor* 92 (1990), 754–760. doi: 10.2307/1368695.
- [37] Grether GF, Losin N, Anderson CN, and Okamoto K. The role of interspecific interference competition in character displacement and the evolution of competitor recognition. *Biological Reviews* 84 (2009), 617–635. doi: 10.1111/j.1469-185X.2009.00089.x. pmid: 19681844.
- [38] Gröning J and Hochkirch A. Reproductive interference between animal species. *The Quarterly Review of Biology* 83 (2008), 257–282. doi: 10.1086/590510.
- [39] Gruson H, Andraud C, Daney de Marcillac W, Berthier S, Elias M, and Gomez D. Quantitative characterization of iridescent colours in biological studies: a novel method using optical theory. *Interface Focus* 9 (2019), 20180049. doi: 10.1098/rsfs.2018.0049.
- [40] Gruson H, Elias M, Andraud C, Djediat C, Berthier S, Doutrelant C, and Gomez D. Hummingbird iridescence: an unsuspected structural diversity influences colouration at multiple scales. *bioRxiv* (2019). in revision, 699744. doi: 10.1101/699744.
- [41] Hardy OJ. Testing the spatial phylogenetic structure of local communities: Statistical performances of different null models and test statistics on a locally neutral community. *Journal of Ecology* 96 (2008), 914–926. doi: 10.1111/j.1365-2745.2008.01421.x.
- [42] Hardy OJ and Senterre B. Characterizing the phylogenetic structure of communities by an additive partitioning of phylogenetic diversity. *Journal of Ecology* 95 (2007), 493–506. doi: 10.1111/j.1365-2745.2007.01222.x.



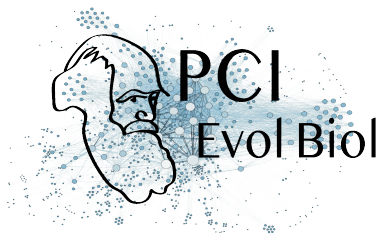
- [43] Hart NS. Microspectrophotometry of visual pigments and oil droplets in a marine bird, the wedge-tailed shearwater *Puffinus pacificus*: topographic variations in photoreceptor spectral characteristics. *Journal of Experimental Biology* 207 (2004), 1229–1240. doi: 10.1242/jeb.00857. pmid: 14978063.
- [44] Hemingson CR, Cowman PF, Hodge JR, and Bellwood DR. Colour pattern divergence in reef fish species is rapid and driven by both range overlap and symmetry. *Ecology Letters* 22 (2019), 190–199. doi: 10.1111/ele.13180.
- [45] Herrera G, Zagal JC, Diaz M, Fernández MJ, Vielma A, Cure M, Martinez J, Bozinovic F, and Palacios AG. Spectral sensitivities of photoreceptors and their role in colour discrimination in the green-backed firecrown hummingbird (*Sephanoides sephaniodes*). *Journal of Comparative Physiology A* 194 (2008), 785. doi: 10.1007/s00359-008-0349-8. pmid: 18584181.
- [46] Hogan BG and Stoddard MC. Synchronization of speed, sound and iridescent color in a hummingbird aerial courtship dive. *Nature Communications* 9 (2018), 5260. doi: 10.1038/s41467-018-07562-7.
- [47] Hurly TA, Scott RD, and Healy SD. The function of displays of male rufous hummingbirds. *The Condor* 103 (2001), 647–651. doi: 10.1650/0010-5422(2001)103[0647:TFODOM]2.0.CO;2.
- [48] Jetz W, Thomas GH, Joy JB, Hartmann K, and Mooers AO. The global diversity of birds in space and time. *Nature* 491 (2012), 444–448. doi: 10.1038/nature11631. pmid: 23123857.
- [49] Lindberg AB and Olesen JM. The fragility of extreme specialization: *Passiflora mixta* and its pollinating hummingbird *Ensifera ensifera*. *Journal of Tropical Ecology* 17 (2001), 323–329. doi: 10.1017/S0266467401001213.
- [50] Lukhtanov VA, Kandul NP, Plotkin JB, Dantchenko AV, Haig D, and Pierce NE. Reinforcement of pre-zygotic isolation and karyotype evolution in *Agrodiaetus* butterflies. *Nature* 436 (2005), 385–389. doi: 10.1038/nature03704.
- [51] Luther D. The influence of the acoustic community on songs of birds in a neotropical rain forest. *Behavioral Ecology* 20 (2009), 864–871. doi: 10.1093/beheco/arp074.
- [52] Maia R, Gruson H, Endler JA, and White TE. pavo 2: New tools for the spectral and spatial analysis of colour in R. *Methods in Ecology and Evolution* 10 (2019), 1097–1107. doi: 10.1111/2041-210X.13174.
- [53] Martin PR, Montgomerie R, and Loughheed SC. Color patterns of closely related bird species are more divergent at intermediate levels of breeding-range sympatry. *The American Naturalist* 185 (2015), 443–451. doi: 10.1086/680206.
- [54] Matyjasiak P. Birds associate species-specific acoustic and visual cues: recognition of heterospecific rivals by male blackcaps. *Behavioral Ecology* 16 (2005), 467–471. doi: 10.1093/beheco/ari012.



- [55] McGuire JA, Witt CC, Remsen JV, Corl A, Rabosky DL, Altshuler DL, and Dudley R. Molecular phylogenetics and the diversification of hummingbirds. *Current Biology* 24 (2014), 910–916. doi: 10.1016/j.cub.2014.03.016. pmid: 24704078.
- [56] McNaught MK and Owens IPF. Interspecific variation in plumage colour among birds: species recognition or light environment? *Journal of Evolutionary Biology* 15 (2002), 505–514. doi: 10.1046/j.1420-9101.2002.00431.x.
- [57] Meadows MG, Morehouse NI, Rutowski RL, Douglas JM, and McGraw KJ. Quantifying iridescent coloration in animals: a method for improving repeatability. *Behavioral Ecology and Sociobiology* 65 (2011), 1317–1327. doi: 10.1007/s00265-010-1135-5. pmid: 876.
- [58] Meadows MG, Roudybush TE, and McGraw KJ. Dietary protein level affects iridescent coloration in Anna's hummingbirds, *Calypte anna*. *Journal of Experimental Biology* 215 (2012), 2742–2750. doi: 10.1242/jeb.069351. pmid: 22837446.
- [59] Montgomerie R. Analyzing colors. In: *Bird Coloration, Volume 1: Mechanisms and Measurements*. Ed. by Hill GE and McGraw KJ. Vol. 1. 2 vols. Bird Coloration. Harvard University Press, 2006, p. 640. isbn: 978-0-674-01893-8.
- [60] Moore RP, Robinson WD, Lovette IJ, and Robinson TR. Experimental evidence for extreme dispersal limitation in tropical forest birds. *Ecology Letters* 11 (2008), 960–968. doi: 10.1111/j.1461-0248.2008.01196.x.
- [61] Naisbit RE, Jiggins CD, and Mallet J. Disruptive sexual selection against hybrids contributes to speciation between *Heliconius cydno* and *Heliconius melpomene*. *Proceedings of the Royal Society of London B: Biological Sciences* 268 (2001), 1849–1854. doi: 10.1098/rspb.2001.1753. pmid: 11522205.
- [62] Nakagawa S and Schielzeth H. Repeatability for Gaussian and non-Gaussian data: a practical guide for biologists. *Biological Reviews* 85 (2010), 935–956. doi: 10.1111/j.1469-185X.2010.00141.x. pmid: 20569253.
- [63] Ödeen A and Håstad O. Complex distribution of avian color vision systems revealed by sequencing the SWS1 opsin from total DNA. *Molecular Biology and Evolution* 20 (2003), 855–861. doi: 10.1093/molbev/msg108. pmid: 12716987.
- [64] Ödeen A and Håstad O. Pollinating birds differ in spectral sensitivity. *Journal of Comparative Physiology A* 196 (2010), 91–96. doi: 10.1007/s00359-009-0474-z.
- [65] Osorio DC and Ham AD. Spectral reflectance and directional properties of structural coloration in bird plumage. *Journal of Experimental Biology* 205 (2002), 2017–2027. pmid: 12089207.
- [66] Osorio DC and Vorobyev M. A review of the evolution of animal colour vision and visual communication signals. *Vision Research*. Vision Research Reviews 48 (2008), 2042–2051. doi: 10.1016/j.visres.2008.06.018. pmid: 18627773.

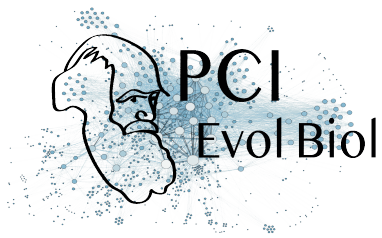


- [67] Pagel M and Lutzoni F. Accounting for phylogenetic uncertainty in comparative studies of evolution and adaptation. In: *Biological Evolution and Statistical Physics*. Ed. by Lässig M and Valleriani A. Vol. 585. Lecture Notes in Physics. Berlin, Heidelberg: Springer Berlin Heidelberg, 2002. isbn: 978-3-540-43188-6. doi: 10.1007/3-540-45692-9.
- [68] Parker AR. 515 million years of structural colour. *Journal of Optics A: Pure and Applied Optics* 2 (2000), R15–R28. doi: 10.1088/1464-4258/2/6/201.
- [69] Parra JL, McGuire JA, and Graham CH. Incorporating clade identity in analyses of phylogenetic community structure: an example with hummingbirds. *The American Naturalist* 176 (2010), 573–587. doi: 10.1086/656619. pmid: 20849270.
- [70] Parra JL. Color evolution in the hummingbird genus *Coeligena*. *Evolution* 64 (2010), 324–335. doi: 10.1111/j.1558-5646.2009.00827.x. pmid: 19703221.
- [71] Pizo MA. Lek behavior of the plovercrest (*Stephanoxis lalandi*, Trochilidae). *The Wilson Journal of Ornithology* 124 (2012), 106–112. doi: 10.1676/11-055.1.
- [72] Prum RO. Anatomy, physics, and evolution of structural colors. In: *Bird Coloration, Volume 1: Mechanisms and Measurements*. Ed. by Hill GE and McGraw KJ. Vol. 1. 2 vols. Bird Coloration. Harvard University Press, 2006, p. 640. isbn: 978-0-674-01893-8.
- [73] Ridgely RS and Greenfield PJ. *The birds of Ecuador: status, distribution and taxonomy*. Ithaca, NY: Cornell University Press, 2001. 880 pp. isbn: 978-0-8014-8720-0.
- [74] Sætre GP, Moum T, Bureš S, Král M, Adamjan M, and Moreno J. A sexually selected character displacement in flycatchers reinforces premating isolation. *Nature* 387 (1997), 589–592. doi: 10.1038/42451. pmid: 847.
- [75] Simpson RK and McGraw KJ. Experimental trait mis-matches uncover specificity of evolutionary links between multiple signaling traits and their interactions in hummingbirds. *Evolution* 73 (2019), 436–451. doi: 10.1111/evo.13662.
- [76] Simpson RK and McGraw KJ. It's not just what you have, but how you use it: solar-positional and behavioural effects on hummingbird colour appearance during courtship. *Ecology Letters* 21 (2018), 1413–1422. doi: 10.1111/ele.13125.
- [77] Simpson RK and McGraw KJ. Two ways to display: male hummingbirds show different color-display tactics based on sun orientation. *Behavioral Ecology* 29 (2018), 637–648. doi: 10.1093/beheco/ary016.
- [78] Stiles FG. Aggressive and courtship displays of the male Anna's hummingbird. *The Condor* 84 (1982), 208–225. doi: 10.2307/1367674. JSTOR: 1367674.
- [79] Stiles FG and Cortés-Herrera JO. Diagnosis and observations of a hybrid hummingbird (*Metallura tyrianthina* x *Aglaiocercus kingi*) in the Eastern Andes of Colombia. *Revista de la Academia Colombiana de Ciencias Exactas, Físicas y Naturales* 39 (2015), 481–490. doi: 10.18257/raccefyn.260.



- [80] Stiles FG and Wolf LL. Ecology and evolution of lek mating behavior in the long-tailed hermit hummingbird. *Ornithological Monographs* (1979), iii–78. doi: 10.2307/40166760. JSTOR: 40166760.
- [81] Stoddard MC and Prum RO. Evolution of avian plumage color in a tetrahedral color space: a phylogenetic analysis of New World buntings. *The American Naturalist* 171 (2008), 755–776. doi: 10.1086/587526.
- [82] Stoffel MA, Nakagawa S, and Schielzeth H. rptR: repeatability estimation and variance decomposition by generalized linear mixed-effects models. *Methods in Ecology and Evolution* 8 (2017). Ed. by Goslee S, 1639–1644. doi: 10.1111/2041-210X.12797.
- [83] Stotz DF, Fitzpatrick JW, Parker III TA, and Moskovits DK. *Neotropical birds: ecology and conservation*. Vol. 3. University of Chicago Press, 1996. isbn: 978-0-226-77629-3.
- [84] Suarez RK. Hummingbird flight: sustaining the highest mass-specific metabolic rates among vertebrates. *Experientia* 48 (1992), 565–570. doi: 10.1007/BF01920240.
- [85] Tobias JA, Planqué R, Cram DL, and Seddon N. Species interactions and the structure of complex communication networks. *Proceedings of the National Academy of Sciences* 111 (2014), 1020–1025. doi: 10.1073/pnas.1314337111. pmid: 24395769.
- [86] Tobias JA and Seddon N. Signal design and perception in *Hypocnemis* antbirds: Evidence for convergent evolution via social selection. *Evolution* 63 (2009), 3168–3189. doi: 10.1111/j.1558-5646.2009.00795.x. pmid: 19659594.
- [87] Villéger S, Mason NWH, and Mouillot D. New multidimensional functional diversity indices for a multifaceted framework in functional ecology. *Ecology* 89 (2008), 2290–2301. doi: 10.1890/07-1206.1.
- [88] Vukusic P. Natural photonics. *Physics World* 17 (2004), 35. doi: 10.1088/2058-7058/17/2/34.
- [89] White TE, Dalrymple RL, Noble DW, O’Hanlon JC, Zurek DB, and Umbers KD. Reproducible research in the study of biological coloration. *Animal Behaviour* 106 (2015), 51–57. doi: 10.1016/j.anbehav.2015.05.007.
- [90] Wilts BD, Michielsen K, Kuipers J, De Raedt H, and Stavenga DG. Brilliant camouflage: photonic crystals in the diamond weevil, *Entimus imperialis*. *Proceedings of the Royal Society B: Biological Sciences* 279 (2012), 2524–2530. doi: 10.1098/rspb.2011.2651.

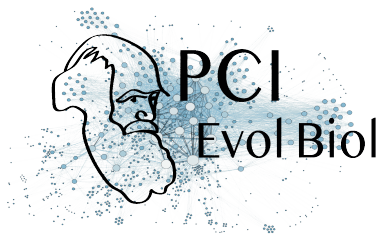




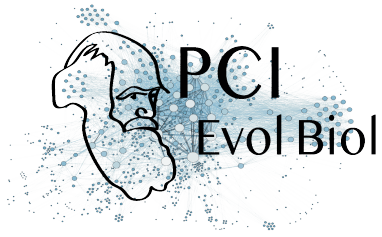
## Appendix

**Table 3.** List of species with their provenance (Confluences = Musée des Confluences, Lyon, France, MNHN = Muséum National d'Histoire Naturelle, Paris, France), strata, and place of collection (when known). Strata data were extracted from Stotz, Fitzpatrick, Parker III, and Moskovits [83] and used in vision models.

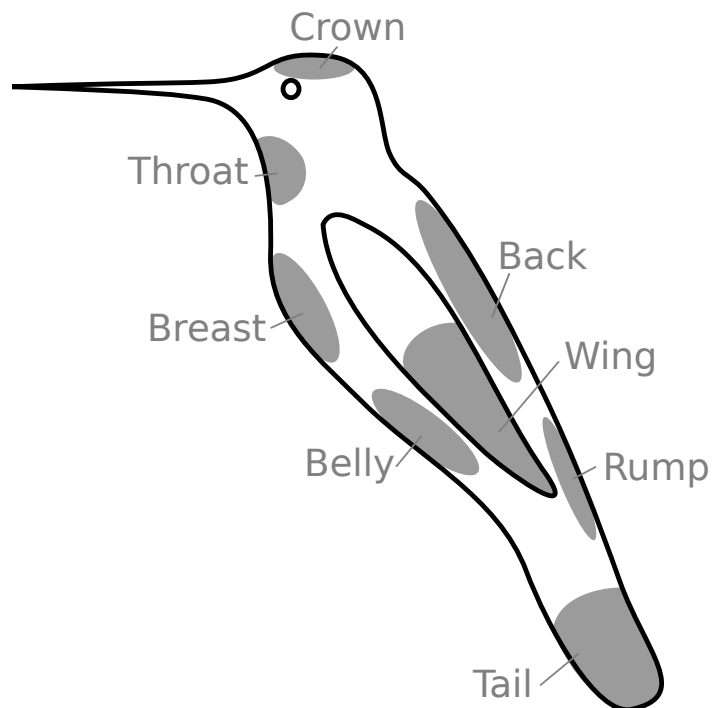
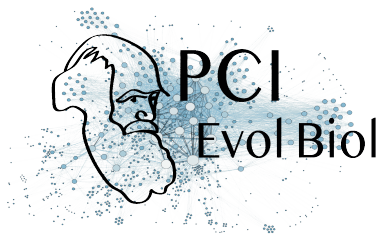
Species	Clade	Provenance	Strata	Location
<i>Adelomyia melanogenys</i>	Coquette	Confluences	Understory	
<i>Aglaeactis cupripennis</i>	Brilliant	MNHN	Canopy	Ecuador
<i>Aglaiocercus coelestis</i>	Coquette	MNHN	Canopy	Ecuador
<i>Aglaiocercus kingi mocoa</i>	Coquette	MNHN	Canopy	Ecuador
<i>Amazilia amabilis</i>	Emerald	MNHN	Understory	Ecuador
<i>Amazilia amazilia</i>	Emerald	MNHN	Understory	Ecuador
<i>Amazilia fimbriata fluviatilis</i>	Emerald	MNHN	Canopy	Ecuador
<i>Amazilia francae</i>	Emerald	MNHN	Canopy	Ecuador
<i>Amazilia grayi meridionalis</i>	Emerald	MNHN	Canopy	Ecuador
<i>Amazilia rosenbergi</i>	Emerald	MNHN	Understory	Ecuador
<i>Amazilia sapphirina</i>	Emerald	MNHN	Canopy	Brasil
<i>Amazilia tzacatl jucunda</i>	Emerald	MNHN	Canopy	Ecuador
<i>Androdon aequatorialis</i>	Mangoe	MNHN	Understory	Ecuador
<i>Anthracothonax nigricollis</i>	Mangoe	MNHN	Canopy	Colombia
<i>Avocettula recurvirostris</i>	Mangoe	Confluences	Understory	
<i>Boissonneaua flavescens</i>	Brilliant	MNHN	Canopy	Ecuador
<i>Boissonneaua matthewsii</i>	Brilliant	MNHN	Canopy	Ecuador
<i>Calliphlox amethystina</i>	Bee	MNHN	Canopy	Ecuador
<i>Calliphlox mitchellii</i>	Bee	Confluences	Canopy	
<i>Campylopterus falcatus</i>	Emerald	MNHN	Understory	Colombia
<i>Campylopterus largipennis</i>	Emerald	MNHN	Understory	Peru
<i>Campylopterus villaviscensio</i>	Emerald	MNHN	Understory	Ecuador
<i>Chaetocercus bombus</i>	Bee	MNHN	Canopy	Ecuador
<i>Chaetocercus mulsant</i>	Bee	MNHN	Understory	Ecuador
<i>Chalcostigma herrani</i>	Coquette	MNHN	Canopy	Ecuador
<i>Chalcostigma ruficeps</i>	Coquette	Confluences	Understory	
<i>Chalcostigma stanleyi stanleyi</i>	Coquette	MNHN	Canopy	Ecuador
<i>Chalybura buffonii intermedia</i>	Emerald	Confluences	Understory	
<i>Chalybura urochrysia urochrysia</i>	Emerald	Confluences	Understory	
<i>Chlorestes notata obsoletus-puruensis</i>	Emerald	Confluences	Canopy	
<i>Chlorostilbon melanorhynchus</i>	Emerald	MNHN	Understory	Ecuador
<i>Chlorostilbon mellisugus phoeopygus</i>	Emerald	Confluences	Understory	
<i>Chrysuronia oenone</i>	Emerald	MNHN	Canopy	Ecuador
<i>Coeligena coeligena</i>	Brilliant	MNHN	Understory	Ecuador
<i>Coeligena iris hesperus</i>	Brilliant	MNHN	Understory	Ecuador
<i>Coeligena iris iris</i>	Brilliant	MNHN	Understory	Ecuador
<i>Coeligena lutetiae</i>	Brilliant	MNHN	Understory	Ecuador
<i>Coeligena torquata fulgidigula</i>	Brilliant	MNHN	Understory	Ecuador
<i>Coeligena torquata torquata</i>	Brilliant	MNHN	Understory	Ecuador
<i>Coeligena wilsoni</i>	Brilliant	MNHN	Understory	Ecuador
<i>Colibri coruscans</i>	Mangoe	MNHN	Canopy	Ecuador



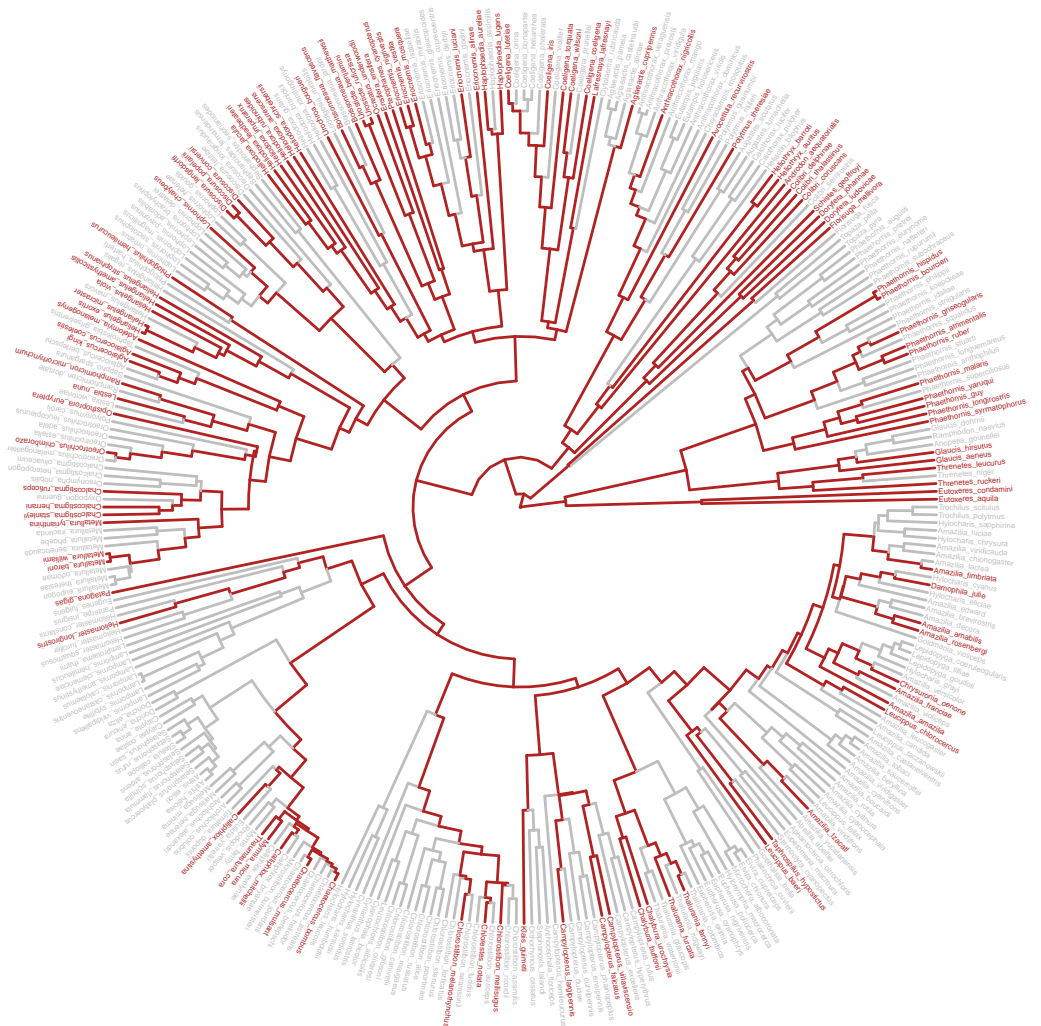
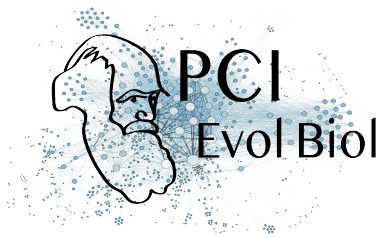
Species	Clade	Provenance	Strata	Location
<i>Colibri delphinae</i>	Mangoe	MNHN	Canopy	Ecuador
<i>Colibri thalassinus</i>	Mangoe	MNHN	Canopy	Colombia
<i>Damophila julie</i>	Emerald	MNHN	Understory	Ecuador
<i>Discosura conversii</i>	Coquette	MNHN	Canopy	Ecuador
<i>Discosura langsdorffi</i>	Coquette	Confluences	Canopy	
<i>Discosura popelairii</i>	Coquette	MNHN	Canopy	Ecuador
<i>Doryfera johannae</i>	Mangoe	MNHN	Understory	Ecuador
<i>Doryfera ludovicae</i>	Mangoe	MNHN	Understory	Ecuador
<i>Ensifera ensifera</i>	Brilliant	MNHN	Understory	Ecuador
<i>Eriocnemis alinae</i>	Brilliant	MNHN	Understory	Ecuador
<i>Eriocnemis luciani</i>	Brilliant	MNHN	Understory	Ecuador
<i>Eriocnemis mosquera</i>	Brilliant	Confluences	Understory	
<i>Eriocnemis nigrivestis</i>	Brilliant	MNHN	Understory	Ecuador
<i>Eriocnemis vestita smaragdinicollis</i>	Brilliant	MNHN	Understory	Ecuador
<i>Eutoxeres aquila</i>	Hermit	MNHN	Understory	Ecuador
<i>Eutoxeres condensini</i>	Hermit	Confluences	Understory	
<i>Florisuga mellivora</i>	Topazes	MNHN	Canopy	Ecuador
<i>Glaucis aeneus</i>	Hermit	MNHN	Understory	
<i>Glaucis hirsutus affinis</i>	Hermit	MNHN	Understory	Peru
<i>Haplophaedia aureliae russata</i>	Brilliant	Confluences	Understory	
<i>Haplophaedia lugens</i>	Brilliant	Confluences	Understory	
<i>Heliangelus amethysticollis laticlavus</i>	Coquette	Confluences	Understory	
<i>Heliangelus exortis</i>	Coquette	MNHN	Understory	Ecuador
<i>Heliangelus micraster</i>	Coquette	MNHN	Understory	Ecuador
<i>Heliangelus strophianus</i>	Coquette	MNHN	Understory	Ecuador
<i>Heliangelus viola</i>	Coquette	MNHN	Understory	Ecuador
<i>Heliodoxa aurescens</i>	Brilliant	MNHN	Understory	Colombia
<i>Heliodoxa imperatrix</i>	Brilliant	MNHN	Understory	Ecuador
<i>Heliodoxa jacula jamesoni</i>	Brilliant	MNHN	Understory	Ecuador
<i>Heliodoxa leadbeateri</i>	Brilliant	MNHN	Understory	Ecuador
<i>Heliodoxa rubinoides aequatorialis</i>	Brilliant	MNHN	Understory	Ecuador
<i>Heliodoxa schreibersii</i>	Brilliant	MNHN	Understory	Ecuador
<i>Heliomaster longirostris</i>	MtGem	MNHN	Canopy	Colombia
<i>Heliothryx auritus</i>	Mangoe	MNHN	Canopy	Ecuador
<i>Heliothryx barroti</i>	Mangoe	MNHN	Canopy	Ecuador
<i>Klais guimeti</i>	Emerald	MNHN	Understory	Ecuador
<i>Lafresnaya lafresnayi gayi</i>	Brilliant	Confluences	Understory	
<i>Lesbia nuna gracilis</i>	Coquette	MNHN	Canopy	Ecuador
<i>Leucippus baeri</i>	Emerald	Confluences	Understory	
<i>Leucippus chlorocercus</i>	Emerald	Confluences	Canopy	
<i>Lophornis chalybeus verreauxi</i>	Coquette	MNHN	Canopy	Colombia
<i>Metallura baroni</i>	Coquette	MNHN	Canopy	Ecuador
<i>Metallura tyrianthina tyrianthina</i>	Coquette	MNHN	Understory	Ecuador
<i>Metallura williami primolina</i>	Coquette	MNHN	Canopy	Ecuador
<i>Myrmia micrura</i>	Bee	MNHN	Canopy	Peru
<i>Ocreatus underwoodii melanantherus</i>	Brilliant	MNHN	Understory	Ecuador
<i>Opisthoprora euryptera</i>	Coquette	Confluences	Understory	
<i>Oreotrochilus chimborazo chimborazo</i>	Coquette	MNHN	Understory	Ecuador
<i>Oreotrochilus chimborazo jamesonii</i>	Coquette	MNHN	Understory	Ecuador



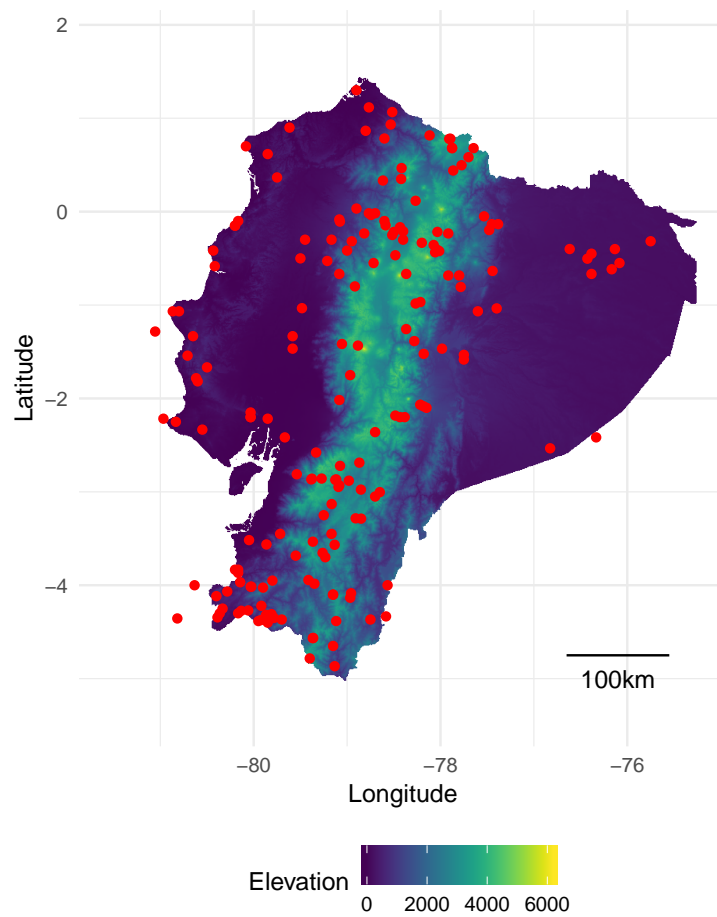
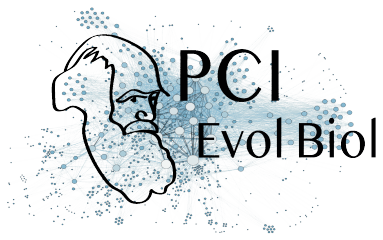
Species	Clade	Provenance	Strata	Location
<i>Patagona gigas</i>	Patagona	MNHN	Canopy	Ecuador
<i>Phaethornis atrimentalis atrimentalis</i>	Hermit	Confluences	Understory	
<i>Phaethornis bourcieri</i>	Hermit	MNHN	Understory	
<i>Phaethornis griseogularis</i>	Hermit	MNHN	Understory	Ecuador
<i>Phaethornis guy</i>	Hermit	MNHN	Understory	Ecuador
<i>Phaethornis hispidus</i>	Hermit	Confluences	Understory	
<i>Phaethornis longirostris</i>	Hermit	Confluences	Understory	
<i>Phaethornis malaris</i>	Hermit	Confluences	Understory	
<i>Phaethornis ruber</i>	Hermit	Confluences	Understory	
<i>Phaethornis syrmatophorus columbianus</i>	Hermit	MNHN	Understory	Ecuador
<i>Phaethornis yaruqui yaruqui</i>	Hermit	MNHN	Understory	Ecuador
<i>Phlogophilus hemileucurus</i>	Coquette	MNHN	Understory	Ecuador
<i>Polytmus theresiae leucorrhous</i>	Mangoe	MNHN	Understory	Ecuador
<i>Pterophanes cyanopterus</i>	Brilliant	MNHN	Understory	Ecuador
<i>Ramphomicron microrhynchum</i>	Coquette	MNHN	Canopy	Ecuador
<i>Schistes geoffroyi</i>	Mangoe	MNHN	Understory	Ecuador
<i>Taphrospilus hypostictus</i>	Emerald	MNHN	Understory	Ecuador
<i>Thalurania fannyi verticeps</i>	Emerald	MNHN	Understory	Ecuador
<i>Thalurania furcata viridipectus</i>	Emerald	MNHN	Understory	
<i>Thaumastura cora</i>	Bee	Confluences	Canopy	
<i>Threnetes leucurus cervinicauda</i>	Hermit	Confluences	Understory	
<i>Threnetes ruckeri</i>	Hermit	MNHN	Understory	Ecuador
<i>Urochroa bougueri</i>	Brilliant	Confluences	Understory	
<i>Urochroa bougueri leucura</i>	Brilliant	Confluences	Understory	
<i>Urosticte benjamini</i>	Brilliant	MNHN	Understory	Ecuador
<i>Urosticte ruficrissa</i>	Brilliant	Confluences	Understory	



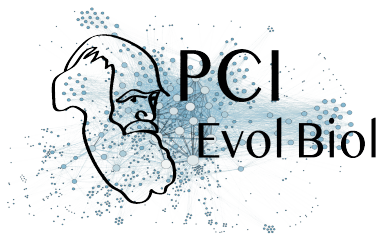
**Supplementary figure 1.** Locations and names of the 8 patches measured on all species. Additional patches were measured for each species as soon as they differed from one of the 8 patches listed here for a human observer, as detailed in the methods section and as in Gomez and Théry [33].



**Supplementary figure 2.** Phylogenetic coverage of the *Trochilidae* family in our dataset (species and lineages in red).

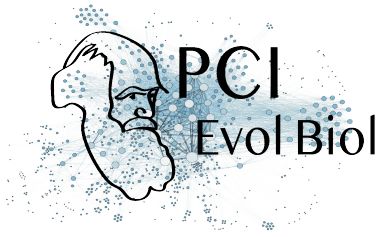


**Supplementary figure 3.** Study site locations (red dots) plotted on an altitudinal map of Ecuador. Communities outside the borders of the map are on islands or close enough to Ecuador borders to be taken into account in our study.



**Table 4.** Measurement of intraspecific variability for brightness (B2) and hue (H1) by computing the coefficient of variation (standard deviation divided the average) on an independent dataset of hummingbirds living in French Guiana (Gomez *et al*, unpublished data), in which between 2 and 5 males (last column) were measured for each species. The measurement protocol differs slightly from the one used in this study, because we used a bifurcated probe at 45°, which may increase the intraspecific variability in brightness. In spite of the apparently high values of the coefficient of variation for brightness, it remains highly repeatable as estimated by the intra-class coefficient [62]:  $R = 0.809$ ,  $p < 0.0001$  for brightness and  $R = 0.661$ ,  $p < 0.0001$  for hue.

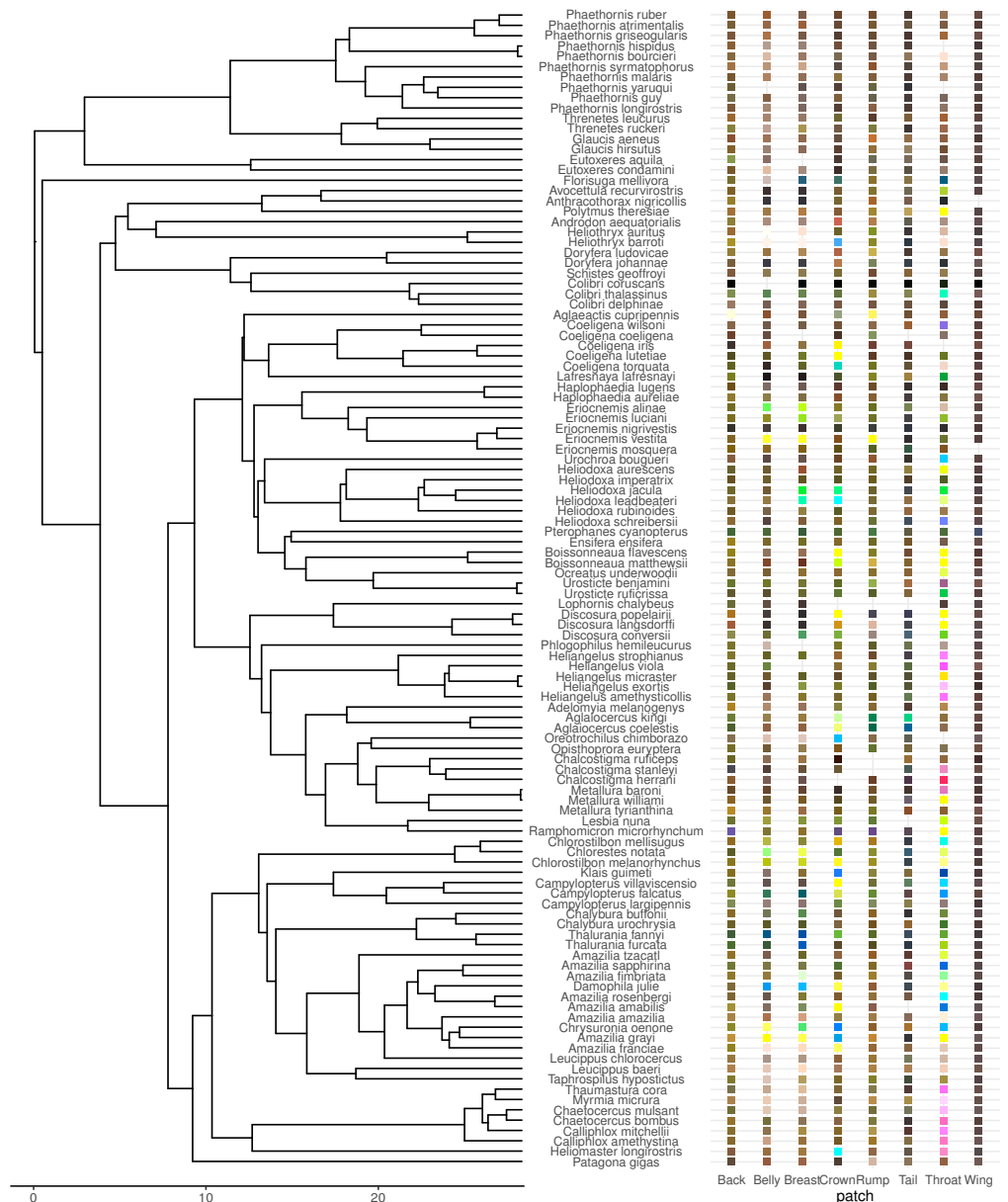
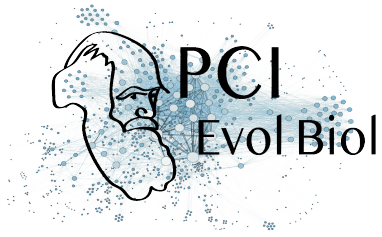
Species	CV brightness (%)	CV_ hue (%)	n
<i>Anthracothorax nigricollis</i>	20.57	2	3
<i>Calliphlox amethystina</i>	24.37	1.13	5
<i>Campylopterus largipennis</i>	17.43	0.1	2
<i>Chlorestes notatus</i>	19.79	1.96	5
<i>Discosura longicauda</i>	26.27	2.51	5
<i>Florisuga mellivora</i>	22.41	2.1	5
<i>Glaucis hirsuta</i>	33.75	0	4
<i>Heliomaster longirostris</i>	26.88	2.26	4
<i>Heliiothryx aurita</i>	22.82	1.26	5
<i>Hylocharis cyanus</i>	29.75	2.55	3
<i>Hylocharis sapphirina</i>	23.32	3.36	4
<i>Lophornis ornatus</i>	23.38	1.55	5
<i>Phaethornis longuemareus</i>	18.59	0.15	4
<i>Phaethornis malaris</i>	21.44	0.1	2
<i>Phaethornis superciliosus</i>	27.88	0.1	5
<i>Thalurania furcata</i>	84.13	12.4	2
<i>Threnetes niger</i>	16.42	0.1	2
<i>Topaza pella</i>	23.04	1.83	5



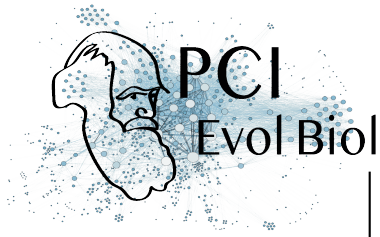
Variable	Diffuse		Directional		Both	
	R	p-value	R	p-value	R	p-value
x	0.734	0.002	0.877	<0.0001	0.925	<0.0001
Hue y	0.923	<0.0001	0.785	0.0006	0.951	<0.0001
z	0.780	0.0006	0.880	<0.0001	0.940	<0.0001
Brightness	0.411	0.090	0.055	0.48	0.373	0.04

**Supplementary table 1.** We quantified the repeatability R (intra-class coefficient ICC) and the related p-value by bootstrapping using the `rptR` R package [62] of indices used in this study by performing the same measurements twice on two patches for 12 species (*Coeligena torquata*, *Colibri coruscans*, *Doryfera ludovicae*, *Heliangelus strophianus*, *Heliodoxa jamesonii*, *Heliathryx barroti*, *Juliomyia julie*, *Lesbia nuna*, *Metallura tyrianthina*, *Ramphomicron microrhynchum*, *Schistes albogularis*, *Urosticte benjamini*). Patches were selected to be of similar hue from a human point of view.





**Supplementary figure 4.** Colour of the 8 main patches for each species in our dataset. The colour corresponds to the colour in the human visual system (CIE10). The x-axis on the phylogeny is in millions years.



variable	value	Crown	Back	Rump	Tail	Throat	Breast	Belly	Wing
Hue	$\tau_{st}$	-0.0073	0.055	0.055	0.044	0.027	0.03	0.05	0.058
	$p_{\tau_{st}<0}$	0.4	1	1	1	0.9	0.9	1	1
	$p_{\tau_{st}>0}$	0.6	<b>0.01</b>	<b>0.01</b>	<b>0.03</b>	0.09	0.06	<b>0.005</b>	<b>0.006</b>
	$d\tau_{st}$	0.0099	0.026	-0.0021	0.0034	-0.0021	-0.0032	-0.01	0.00073
	$p_{\tau_{st}<0}$	1	1	0.8	1	0.9	0.3	<b>&lt;0.0001</b>	1
	$p_{\tau_{st}>0}$	<b>&lt;0.0001</b>	<b>&lt;0.0001</b>	1	0.2	1	1	1	1
Brightness	$\tau_{st}$	-0.021	0.0078	0.0032	-0.0064	0.00015	0.0041	-0.0031	0.0091
	$p_{\tau_{st}<0}$	0.1	0.7	0.6	0.5	0.5	0.6	0.5	0.6
	$p_{\tau_{st}>0}$	0.9	0.3	0.4	0.5	0.5	0.4	0.5	0.4
	$d\tau_{st}$	-0.0014	0.0028	0.00037	0.00068	0.013	0.023	0.007	-0.0058
	$p_{\tau_{st}<0}$	0.3	1	0.9	1	1	1	1	0.2
	$p_{\tau_{st}>0}$	0.8	0.7	0.7	0.8	<b>&lt;0.0001</b>	<b>&lt;0.0001</b>	<b>0.002</b>	1
Hue shift	$\tau_{st}$	-0.007	0.051	0.052	0.043	0.027	0.029	0.049	0.058
	$p_{\tau_{st}<0}$	0.4	1	1	1	0.9	0.9	1	1
	$p_{\tau_{st}>0}$	0.6	<b>0.01</b>	<b>0.01</b>	<b>0.03</b>	0.08	0.06	<b>0.006</b>	<b>0.006</b>
	$d\tau_{st}$	0.0087	0.0059	-0.0068	-0.006	-0.0033	0.0023	-0.0098	-0.0018
	$p_{\tau_{st}<0}$	1	1	<b>0.005</b>	<b>0.01</b>	0.6	1	<b>&lt;0.0001</b>	1
	$p_{\tau_{st}>0}$	<b>&lt;0.0001</b>	<b>0.03</b>	1	1	1	0.9	1	1

**Supplementary table 2.** Numerical values for  $\tau_{st}$  and decoupled  $\tau_{st}$  (denoted  $d\tau_{st}$ ). P-values were computed by comparison of the actual value with the null distribution (obtained by randomisation of the communities using method 1s of Hardy [41]). Significant p-values are in bold and green. Positive values of  $d\tau_{st}$  indicate phenotypic clustering whereas negative values indicate overdispersion.