



**HAL**  
open science

## Influence of porosity on lipid preservation in the wall of archaeological pottery

Léa Drieu, Matthieu Horgnies, Didier Binder, Pierre Petrequin, Anne-Marie Pétrequin, Kewin Peche-Quilichini, T. Lachenal, Martine Regert

### ► To cite this version:

Léa Drieu, Matthieu Horgnies, Didier Binder, Pierre Petrequin, Anne-Marie Pétrequin, et al.. Influence of porosity on lipid preservation in the wall of archaeological pottery. *Archaeometry*, 2019, 61 (5), pp.1081-1096. 10.1111/arc.12479 . hal-02371740

**HAL Id: hal-02371740**

**<https://hal.science/hal-02371740v1>**

Submitted on 3 Dec 2021

**HAL** is a multi-disciplinary open access archive for the deposit and dissemination of scientific research documents, whether they are published or not. The documents may come from teaching and research institutions in France or abroad, or from public or private research centers.

L'archive ouverte pluridisciplinaire **HAL**, est destinée au dépôt et à la diffusion de documents scientifiques de niveau recherche, publiés ou non, émanant des établissements d'enseignement et de recherche français ou étrangers, des laboratoires publics ou privés.

# 1 INFLUENCE OF POROSITY ON LIPID PRESERVATION INTO THE WALL OF ARCHAEOLOGICAL POTTERY

2  
3  
4 Léa Drieu<sup>a,\*</sup>,<sup>1</sup>, Matthieu Horgnies<sup>b</sup>, Didier Binder<sup>a</sup>, Pierre Pétrequin<sup>c</sup>, Anne-Marie Pétrequin<sup>c</sup>, Kewin  
5 Peche-Quilichini<sup>d,e</sup>, Thibault Lachenal<sup>e</sup>, Martine Regert<sup>a</sup>

6  
7  
8 <sup>a</sup> CNRS, Université Côte d'Azur, CEPAM, France

9 <sup>b</sup> LafargeHolcim R&D, 95 rue du Montmurier, 38291 Saint Quentin Fallavier, France

10 <sup>c</sup> Maison des Sciences de l'Homme et de l'Environnement C.N. Ledoux, CNRS & Université de  
11 Franche-Comté, 32 rue Mégevand, 25030 Besançon Cedex, France

12 <sup>d</sup> Inrap Méditerranée, France

13 <sup>e</sup> ASM, UMR5140, Univ Montpellier 3, CNRS, MCC, France

14  
15  
16 \* Corresponding author. E-mail address: [lea.drieu@york.ac.uk](mailto:lea.drieu@york.ac.uk) (L. Drieu)

17 <sup>1</sup> Present address: BioArCh, Department of Archaeology, University of York, Wentworth Way,  
18 Heslington, York, YO10 5NG, United Kingdom.

## 19 20 21 ABSTRACT

22  
23  
24 Porosity of archaeological pottery is a key parameter to assess its ability to trap lipids during the use  
25 of the pot and to preserve them overtime. Mercury intrusion porosimetry and gas chromatography  
26 were used to study the distribution of porosity and the preservation of lipids in different chrono-  
27 cultural contexts. The data obtained show that the porosity pattern, related to the raw materials and  
28 the *savoir-faire* of the potters, influences the amount of lipids accumulated in the pottery. A  
29 significant overall porosity together with high level of small pores is generally favourable to the  
30 preservation of lipids, but variations related to the environmental context are observed.

## 31 32 33 KEYWORDS

34  
35  
36 Organic residue analysis; Mercury intrusion porosimetry; Organic matter degradation; Pottery use

## 37 38 39 INTRODUCTION

40  
41  
42 Organic molecules have proven to be absorbed inside the walls of unglazed pottery during their use  
43 and to be preserved over millennia in archaeological vessels (Charters et al., 1997; Evershed, 2008;  
44 Evershed et al., 1995; Regert, 2011). Thanks to the development of analytical techniques such as gas  
45 chromatography, mass spectrometry and isotopic ratio mass spectrometry, a wide diversity of

46 natural substances was detected in archaeological pottery. The study of these organic residues  
47 provided valuable data to understand past communities and their changes over time by investigating  
48 pottery function (Drieu et al., 2018; Fanti et al., 2018; Salque et al., 2013) and the exploitation of  
49 natural resources (e.g. Craig et al., 2011; Debono Spiteri et al., 2016; Evershed et al., 2008b).

50

51

52 The porous nature of unglazed ceramics is known to be one of the key parameters allowing both  
53 absorption and preservation of organic products inside pottery walls (Evershed et al., 2008a;  
54 Shepard, 1956, p. 126). The absorption of liquid or semi-liquid substances inside the pores of  
55 unglazed pottery is easily understood, and the analysis of non-porous vessels generally yields poor  
56 results (Evershed, 2008), except if micro-cracks exist on pottery surface (Pecci et al., 2015, 2016). The  
57 absorption of organic molecules inside the porous ceramic matrix is thought to be an essential factor  
58 of their preservation over time (Eglinton et al., 1991; Heron and Evershed, 1993). Indeed, when  
59 trapped into the pores, the organic molecules are protected from the surrounding sediment, in an  
60 environment generally less favourable to the growth of microorganisms (pH conditions, availability of  
61 oxygen, water, and nutrients; Aillaud, 2001, pp. 4–5; Evershed, 1993, 2008). Furthermore, part of  
62 the organic compounds is located in small-size pores that strongly limit their access for fungi and  
63 microorganisms (Evershed, 1993, 2008; Heron et al., 1991; Heron and Evershed, 1993). Thus,  
64 porosity characteristics are thought to play an important role in both the absorption and  
65 preservation of organic molecules within the pottery walls.

66

67

68 Porosity of ceramic vessels has been investigated for studying pottery manufacture and firing  
69 (Carvalho et al., 2006; Gomart et al., 2017; Maniatis and Tsirtsoni, 2002; Morariu et al., 1977;  
70 Sanders, 1973; Sobott et al., 2014; Thér, 2016; Volzone and Zagorodny, 2014), physical properties  
71 related to pottery function (Lapp, 2012; Moraru and Szendrei, 2010; Rice, 1987, pp. 350–354), and  
72 resistance to degradation during burial (Bronitsky, 1986, pp. 225–231). However, although several  
73 authors mention relationships between porosity and organic products trapped into pottery walls,  
74 only few have investigated porosity in this view (Correa-Ascencio and Evershed, 2013; Matlova et al.,  
75 2017; Namdar et al., 2009) and none have specifically studied the properties of absorption and  
76 preservation of organic molecules detected in archaeological pottery using porosity analysis.  
77 From a methodological perspective, porosity of archaeological pottery has been studied by producing  
78 2D images using Scanning Electron Microscope (SEM; Carvalho et al., 2006; Correa-Ascencio and  
79 Evershed, 2013; Maniatis and Tsirtsoni, 2002; Moraru and Szendrei, 2010) or 3D images by micro  
80 tomography (Gomart et al., 2017; Kulkova and Kulkov, 2016; Sobott et al., 2014). Both techniques  
81 have the advantage of being non-destructive, but quantitative study of the distribution of porosity  
82 requires specific data processing (image analysing software or mathematical treatments of the  
83 tomography data; Adrian De la Fuente and Vera, 2015; Aprile et al., 2014; Reedy et al., 2014, Thér,  
84 2016). Mercury Intrusion Porosimetry (MIP), a technique specifically adapted to the quantitation of  
85 the porosity that allows both the measurement of the total volume of pores and an estimation of the  
86 pores distribution depending on their diameter (Giesche, 2006; Sobott et al., 2014), was used to  
87 study the porosity of archaeological ceramics (Matlova et al., 2017; Morariu et al., 1977; Namdar et  
88 al., 2009; Sanders, 1973; Sobott et al., 2014; Volzone and Zagorodny, 2014), but up to now, the  
89 question of the influence of porosity on the preservation of organic molecules has not yet been  
90 considered in this way

91  
92  
93  
94  
95  
96  
97  
98  
99  
100  
101  
102  
103  
104  
105  
106  
107  
108  
109  
110  
111  
112  
113  
114  
115  
116  
117  
118  
119  
120  
121  
122  
123  
124  
125  
126  
127  
128  
129  
130  
131  
132  
133  
134  
135

With mercury intrusion porosimetry, the present study investigates the relationship between the amount of lipids preserved in archaeological potsherds and the porosity of the ceramic matrix (quantity of pores and distribution). This issue is addressed by studying the porosity of potsherds taken from three different chrono-cultural contexts and having preserved various quantities of lipids as determined by gas chromatography analysis. By improving our understanding of the impact of porosity on the amount of lipids extracted from archaeological sherds, this work aims, in the long term, to (i) determine if it is possible to build a selection grid for optimising sampling of archaeological pottery for lipid analysis; and (ii) better understand lipid absorption and preservation in pottery walls for in-depth interpretation of pottery use.

MATERIALS AND METHODS

Archaeological potsherds

Three archaeological sites, having different chronological and geographical locations, were chosen to represent different contexts of preservation which were either more, or less favourable to biochemical (anoxic vs. oxic conditions, basic vs. acid sediment) and physical degradation (various degrees of waterflow, wetlands).

The Pendimoun rock shelter was chosen to represent a context favourable to biochemical degradation processes, with oxic conditions of burial and basic sediments related to the calcareous geological environment. In this settlement, archaeological artefacts were also exposed to intensive leaching, due to the location of the site at a stratification joint between Jurassic limestones and Cretaceous marl-limestone (Binder et al., 1993). This site, situated in the south-east of France near the Italian border (Castellar, France), revealed archaeological remains from the Epipaleolithic to the Middle Ages (Binder et al., 1993). Thirteen samples dating from the Early Neolithic period (*Impressa* ware, 5720 to 5470 BCE; Binder et al., 2017) were selected for analysis. Pottery from this period was recovered in high amounts and is made of three main fabrics: granitoid, glauconitic and mixed granitoid and glauconitic earths (Binder & Sénépart, 2010; Gabriele, 2014, pp. 223–225). Due to the heterogeneity and complexity of mixed earths, only granitoids and glauconitic potsherds were sampled for the present study.

The site of Cuciurpula was selected because of its acidic sediment, unfavourable to microorganism activity (DeLaune et al., 1981; Drieu et al., 2018; Moucawi et al., 1981). Twelve potsherds were sampled from this open-air site dating from the end of the Bronze Age to the first half of the Iron Age and situated in the mountainous region of central south Corsica (Serra-di-Scopamena and Sorbollano, France; Peche-Quilichini et al., 2015). In-depth analysis of the ceramic fabric has not yet been carried out but most of the pottery seems to be made of local granitic earth with high quantity of non-plastic inclusions of variable grain size (Peche-Quilichini, 2010).

Clairvaux XIV was selected for its wet and anoxic environment, very unfavourable to biochemical degradation of lipids (Den Dooren De Jong et al., 1961; Eglinton et al., 1991). This site is one of a number of settlements surrounding the Lake of Clairvaux (Jura, France) ranging from the Neolithic to

136 the Bronze Age (Pétrequin and Pétrequin, 2016a) and is dated to the first half of the 4th millennium  
137 BC (Pétrequin, 2016). For the present study, we selected thirteen potsherds, made of marl clay  
138 tempered with ground limestone or calcite (Pétrequin and Pétrequin, 2016b).

139  
140

141 To limit excessive destruction of archaeological artefacts, a single fragment of pottery (between 2.5  
142 and 4 g) was sampled on each ceramic vessel investigated. Unspecific samples (non-refitting sherds,  
143 absence of decoration or chrono-cultural markers) were preferentially selected. Each sample was  
144 then divided into two subsamples for lipid and mercury intrusion porosimetry analyses.

145  
146

#### 147 Lipids extraction and analysis

148  
149

150 Sample treatment and analysis were carried out following Evershed et al. (1990) with slight  
151 modifications. When visible residues existed on the surface of potsherds, they were sampled using a  
152 clean scalpel blade. Following the vast majority of the literature on lipid residue analysis, the surface  
153 of the potsherds (around 1 mm) was then removed using a clean scalpel blade to eliminate any  
154 exogenous lipid. Around 2 g of ceramic sherd and between 20 and 100 µg of visible residue were  
155 then crushed with a mortar and pestle and 20 µL of internal standard was added for quantitation (*n*-  
156 tetratriacontane, 1 mg/mL in *n*-hexane). Lipids were extracted with 10 mL of  
157 dichloromethane/methanol (DCM:MeOH; 2:1, v/v) by sonication (2 × 15 min). After centrifugation,  
158 the supernatant was evaporated to dryness under a gentle stream of nitrogen and dissolved in  
159 500 µL of DCM/MeOH to obtain the total lipid extract (TLE). An aliquot of the TLE (100 µL) was  
160 evaporated to dryness and treated with 50 µL of *N,O*-bis(trimethylsilyl)trifluoroacetamide containing  
161 1% trimethylchlorosilane (BSTFA; 70°C, 1h). The excess BSTFA was evaporated under nitrogen and  
162 the sample recovered in 25 to 2000 µL of cyclohexane (depending on the amount of lipid matter  
163 preserved) for high temperature gas chromatography analysis (HT GC).

164 1 µL of sample was introduced into an Agilent Technologies 7890A gas chromatograph, via an on-  
165 column injector. The analysis was performed using a 15 m x 0.32 mm i.d. fused silica capillary column  
166 (DB5-MS, 0.1 µL film thickness, Agilent J&W), and helium as carrier gas. The temperature programme  
167 consisted of an increase from 50°C to 100°C at 15°C.min<sup>-1</sup>, and then from 100°C to 375°C at  
168 10°C.min<sup>-1</sup>.

169 Gas-chromatography mass-spectrometry was used to determine the structure of the molecular  
170 compounds, in particular to distinguish between molecules originating from the pottery use and  
171 modern contaminants. These analyses were performed on a Shimadzu GC 2010 PLUS chromatograph  
172 coupled to a Shimadzu QP 2010 ULTRA mass spectrometer. An aliquot of sample (1 µL) was injected  
173 on a high temperature non-polar column (DB5-HT, 15 m x 0.322 mm i.d., 0.1 µm film thickness,  
174 Agilent J&W) via a splitless injector. The GC temperature programme was as follows: 1 min  
175 isothermal hold at 50°C followed by an increase to 100°C at 15°C.min<sup>-1</sup>, then to 240°C at 10°C.min<sup>-1</sup>  
176 and to 380°C.min<sup>-1</sup> and a final isothermal hold for 7 min. The GC-MS interface temperature was  
177 maintained at 300°C. The mass spectrometer was used in electron ionization mode (EI, 70 eV) and  
178 mass spectra were acquired over the range *m/z* 50–950.

179 The lipid concentration was calculated by summing the area of all the peaks and comparing it with  
180 the area of the internal standard peak. Modern contaminants, such as phthalates (easily identified by  
181 the characteristic  $m/z$  149 fragment), were excluded from the overall calculation.

182  
183

184 This study is part of a wider project of lipid analysis, in which large sets of samples were analysed for  
185 each site (Drieu et al., 2018, submitted). For the present study a subset of samples was selected from  
186 each of these assemblages to represent the complete range of lipid preservation inside the ceramic  
187 walls at each site: the samples with the best preservation of lipids of each site were selected and  
188 compared with samples with medium and very low preservation (Table 1). Potsherds from Clairvaux  
189 XIV and Cuciurpula originate from a large diversity of ceramic types: cooking pots, serving and storing  
190 vessels. The functional study of the pots, based on their content, shape and traces of use have been  
191 published elsewhere (Drieu et al., 2018, submitted). Most of the samples from the site of Pendimoun  
192 originate from pots of unknown function, especially because it was not possible to reconstruct the  
193 form, and they did not display any traces of use (carbonised residues, traces of soot, etc.).

194  
195

196 Table 1: List of samples analysed during the study and lipid yield. \* two distinct residues removed  
197 from the internal and external surfaces of the pot.

198  
199

## 200 Mercury Intrusion Porosimetry

201  
202

203 Mercury intrusion porosimetry analyses were performed using microporosimeter Autopore IV  
204 (Micromeritics). The pressure range of the technique was from sub ambient up to 400 MPa, in order  
205 to cover a pore diameter range from approximately 360  $\mu\text{m}$  to 3 nm. Archaeological samples were  
206 broken into fragments having a small volume between 0.5 and 1  $\text{cm}^3$  (0.30 to 1.75 g), dried overnight  
207 in an oven at 45 °C and introduced alone or in pairs in the analysis cell. A contact angle of 130° was  
208 used for the calculation of the entrance diameter of pores, a value already used for mercury intrusion  
209 porosimetry on archaeological samples (Sanders, 1973).

210 Considering equation (1) where  $P$  is the apply pressure;  $\gamma$  is the surface tension of the liquid  
211 (mercury);  $\theta$  is the contact angle between the liquid and the substrate; we can determine  $r$ , which is  
212 the radius of the pores.

$$213 r = (-2 \gamma \cos \theta) / P \quad (1)$$

214 This method of characterisation is often used to study the porosity of different types of materials.  
215 However, some assumptions need to be considered before discussing the results, such as the aging  
216 of the samples, the presence of mineral post-deposits, but also the influences of the pressure on the  
217 microstructure, the presence of residual air or humidity into the pores, the use of a cylindrical pore  
218 model, etc. (as well explained by A.J. Klemm [2009]). In this study, the preparation of the samples  
219 was designed to remove most of the remaining humidity without inducing any damage in the  
220 microstructure, by gently drying the samples. The analytical conditions were tested on modern  
221 pieces of ceramics in order to rule out the risk of damages due to the pressure. The presence of  
222 visible carbonated deposits on some sherds from the site of Pendimoun is not correlated with a  
223 reduced porosity, suggesting that they have limited impact on the post-depositional evolution of the

224 porosity, contrarily to what was stated in the literature (Bronitsky, 1986, pp. 228; Rice, 1987, pp. 353).  
225 Finally, these analyses are semi-quantitative due to the use of the cylindrical pore model and the  
226 presence of potential residual air or humidity. However, they provide useful comparative results  
227 because they were carried out on similar ceramic materials and in the exact same analytical  
228 conditions.

229 It is noteworthy to emphasize that this protocol does not specifically measure the porosity of the  
230 internal surface of the pot. This is because mercury not only enters the samples through the pores of  
231 the internal and external surface of the pot, but also enters through the fractured edges. The effect  
232 of surface treatments, such as burnishing and the application of a slip is thus not measured. As  
233 these treatments heterogeneously affect the surface properties of the pottery, we think that a  
234 specific research project should be entirely dedicated to the study of the influence of the surface  
235 properties of the samples. Consequently, as a first approach of the topic, we decided to restrict the  
236 scope of this paper to the study of the influence of the core properties (microstructure) of the  
237 ceramics.

238 To evaluate the ability of microorganisms to penetrate the pottery walls, the data of Total Intrusion  
239 Volume were subdivided for each sample. Two types of pores were distinguished based on their  
240 diameter: pores of diameter larger than 1  $\mu\text{m}$ , accessible to microorganisms and pores with smaller  
241 diameters («small pores»), where microorganisms cannot penetrate due to their size (generally in  
242 the range of the micrometer; Davis et al., 1990, p. 21).

243

244

## 245 RESULTS

246

247

### 248 Porosity analysis

249

250

251 Figure 1 details the results obtained on the pore distributions of the samples. The percentage of  
252 overall porosity ranges from 14 to 36% of the volume of the sherd, and the percentage of the total  
253 intrusion volume relative to «small pores» (diameters < 1  $\mu\text{m}$ ) ranges from 23 to 78% of the overall  
254 porosity (Table 2).

255

256

257 The samples from Pendimoun are distributed in three different porosity groups (Table 2). Samples  
258 from the first group (AP1; LD10700a, LD10702a, LD10703a, LD10716a, LD10718a, LD10720a and  
259 LD10723) are characterised by:

- 260 - an overall porosity between 22 and 25%,
- 261 - between 48 and 67% of pores having a diameter < 1  $\mu\text{m}$  («small pores»),
- 262 - three main types of pores having a diameter around 10  $\mu\text{m}$ , around 4  $\mu\text{m}$  and between 0.03  
263 and 0.15  $\mu\text{m}$  (Figure 1a),
- 264 - less than 7  $\mu\text{g.g}^{-1}$  of lipids preserved.

265 A second group (AP2; LD10711, LD10724, and LD10731) which included three samples made of  
266 granitoid paste with:

- 267 - much smaller overall porosity, between 16 and 19%,

- 268 - a smaller quantity of «small pores» having a diameter < 1 µm (44 to 45%),  
269 - one main pore type with a diameter between 0.5 and 4 µm (Figure 1b),  
270 - between 1.2 and 34.1 µg.g<sup>-1</sup> of lipids preserved.

271 The third group (AP3; LD10710, LD10713, and LD10714; Figure 1c) comprised samples with:

- 272 - a small percentage of overall porosity (14 to 20%),  
273 - between 23 to 40% of «small pores» having a diameter < 1 µm,  
274 - two main types of pores having a diameter around 4 µm and around 10 µm,  
275 - less than 6.6 µg.g<sup>-1</sup> of lipids preserved.

276  
277

278 Figure 1: Differential distribution curves measured by mercury intrusion porosimetry for the  
279 archaeological potsherds. a) Group AP1; b) Group AP2; c) Group AP3; d) Group Cuci1; e) Group Cuci2;  
280 f) Group Cuci3; g) Group Cl1; h) Group Cl2. Dotted lines indicate the main types of pores discussed in  
281 the text.

282  
283

284 The percentage of overall porosity is more homogeneous for the samples from Cuciurpula (21.8 to  
285 28.7%). Three groups of samples can nonetheless be distinguished based on the distribution of the  
286 pore diameters (Figure 1d, e, f). The first group (Cuci1; LD10659, LD10665, and MR2707) is defined  
287 by samples having:

- 288 - between 49 and 45% of «small pores» with diameters < 1 µm  
289 - two main types of pores with diameter of around 10 µm and 4 µm, and a smaller number of  
290 pores between 0.1 and 1 µm (Figure 1d)  
291 - low preservation of lipids (0.94 to 15.1 µg.g<sup>-1</sup> of lipids).

292 The second group (Cuci2; MR2696, MR2698, MR2711, and MR2717) is characterised by:

- 293 - a percentage of «small pores» higher than the group Cuci1 (55 to 57%)  
294 - three main types of pores with diameters close to 10 µm, 4 µm and between 0.01 and 0.1 µm  
295 (Figure 1e).  
296 - overall low preservation of lipids except one sample that yielded 316.4 µg.g<sup>-1</sup> of lipids.

297 A third group (Cuci3; LD10656, LD10667, LD10676, MR2699 and MR2701) includes samples  
298 characterised by:

- 299 - between 46 and 51% of «small pores» with diameters < 1 µm  
300 - homogeneous porosity profile without clear peaks (Figure 1f)  
301 - diverse preservation of lipids: two samples yielded respectively 0.2 and 25.0 µg.g<sup>-1</sup> while the  
302 remaining three preserved between 153.3 and 856.2 µg.g<sup>-1</sup> of lipids.

303  
304

305 Samples from Clairvaux XIV were divided in two groups, mainly defined by their percentage of  
306 porosity (Figure 1g, h). The first group (Cl1; LD10100, LD10101, LD10103, LD10114, LD10126, and  
307 LD10133) comprised samples having:

- 308 - overall porosity between 25 and 36%  
309 - less than 65% of «small pores»  
310 - two main types of pores with diameters between 6 and 200 µm and between 0.02 and 1 µm  
311 (Figure 1g).  
312 - less than 22 µg.g<sup>-1</sup> of lipids preserved.



313 The second group is composed of the seven samples (Cl2; LD10104, LD10113, LD10117, LD10125,  
314 LD10129, LD10130, and LD10131) displaying:  
315 - overall porosity between 23 and 30%  
316 - large quantity of «small pores» (more than 65%).  
317 - one main type of pores with a diameter between 0.02 and 1  $\mu\text{m}$  (Figure 1h)  
318 - excellent preservation of lipids (between 95.1 and 901.9  $\mu\text{g}\cdot\text{g}^{-1}$ , except for LD10104, yielding  
319 3.5  $\mu\text{g}\cdot\text{g}^{-1}$  of lipids.

320  
321

322 Table 2: Table summarising the results obtained by lipid and mercury intrusion porosimetry analyses  
323 for all groups analysed.

324  
325

326 Comparison between lipids preservation and porosity

327  
328

329 Figure 2: Lipid concentration (TLE,  $\mu\text{g}\cdot\text{g}^{-1}$ ) versus overall porosity (a) and «small pores» (diameters < 1  
330  $\mu\text{m}$ ) (b).

331  
332

333 All the samples preserving lipids have specific porosity values (between 18 and 30% of overall  
334 porosity and 43 and 78% of «small pores» of diameters < 1  $\mu\text{m}$ ; Figure 2), potentially suggesting a  
335 range of % overall porosity and % of pores of «small pores» (diameters < 1  $\mu\text{m}$ ) that favours the  
336 preservation of the lipids absorbed into the ceramic matrix.

337 Particularly, the quantity of «small pores» (diameters < 1  $\mu\text{m}$ ) seems to be related to lipid  
338 preservation (Figure 3). This relationship is notably seen for extreme cases: for example only one of  
339 the eight samples displaying less than 45% of «small pores» with diameters < 1  $\mu\text{m}$  yielded more  
340 than 20  $\mu\text{g}\cdot\text{g}^{-1}$  of lipids (Figure 2b). On the contrary, among the six samples with more than 70% of  
341 «small pores» of diameter < 1  $\mu\text{m}$ , five preserved lipids (Figure 2b). The samples having significant  
342 percentage of overall porosity (more than 26%; LD10100, LD10103, LD10114, LD10133, LD10659,  
343 MR2707, LD10665, LD10126), seem to better preserve lipids when their porosity is mostly made up  
344 of «small pores» (more than 65% of pores of diameter < 1  $\mu\text{m}$ ).

345 The near absence of lipids in some samples which have a large quantity of «small pores» (LD10104,  
346 LD10700, LD10702, LD10703, LD10716, LD10718, LD10720, LD10723, MR2698, MR2699, MR2711,  
347 MR2717) could be related to other parameters such as chemical degradation or specific use of the  
348 vessels for non-fatty substances. This latter hypothesis is confirmed for 4 samples from Cuciurpula  
349 (MR2698, MR2699, MR2711, and MR2717) bearing visible surface residues that yielded very low  
350 amounts of lipids (between 3 and 84  $\mu\text{g}\cdot\text{g}^{-1}$ , when other visible residues at the site contain several  
351 hundred  $\mu\text{g}\cdot\text{g}^{-1}$ ; Table 1 and Drieu et al., 2018).

352  
353

354 Figure 3: Degree of preservation of lipids depending on «small pores» < 1  $\mu\text{m}$ . Samples with TLE > 20  
355  $\mu\text{g}\cdot\text{g}^{-1}$  are considered as well preserved and those with TLE < 20  $\mu\text{g}\cdot\text{g}^{-1}$  are considered as badly  
356 preserved. The percentage indicated corresponds to the % of well-preserved samples for each  
357 category of size distribution of «small pores» < 1  $\mu\text{m}$ .

358  
359  
360  
361  
362  
363  
364  
365  
366  
367  
368  
369  
370  
371  
372  
373  
374  
375  
376  
377  
378  
379  
380  
381  
382  
383  
384  
385  
386  
387  
388  
389  
390  
391  
392  
393  
394  
395  
396  
397  
398  
399  
400  
401  
402

The impact of «small pores» is mainly seen in potsherds from Pendimoun and Clairvaux XIV (Figure 2b), as they display extreme cases of porosity: a very low quantity of «small pores» in Pendimoun and a very high quantity in Clairvaux XIV. At Pendimoun, samples with less than 40% of «small pores» (LD10713 and LD10714) did not preserved any lipids, while the only sample yielding more than 20  $\mu\text{g.g}^{-1}$  of lipids displays such pores, even in small quantities (LD10731, 44% of pores < 1  $\mu\text{m}$ ). Samples from Clairvaux XIV with both a high quantity of «small pores» and absence of pores of large diameter (more than 10  $\mu\text{m}$ ; Group Cl2) seem to preserve the highest quantity of lipids: 85% of samples yielding more than 20  $\mu\text{g.g}^{-1}$  are also characterised by more than 65% of «small pores» with diameters smaller than 1  $\mu\text{m}$ . At Cuciurpula, the porosity range seems to have a lesser impact on the preservation of lipids into pottery walls, as lipids are better preserved inside samples with a very homogenous distribution of pores (Group Cuci3).

## DISCUSSION

### Diversity of the porosity pattern and making of the pottery

Pottery from the three sites investigated presents various patterns of porosity (Figure 4): sherds from Clairvaux XIV are the most porous (mean value of overall porosity of 28%) with the highest level of «small pores» < 1  $\mu\text{m}$  (mean value of «small pores» of 66.%) while the opposite is observed for the site of Pendimoun (mean value of overall porosity of 25%; mean value of «small pores» of 50.%). The site of Cuciurpula presents intermediate values (mean value of overall porosity of 21%; mean value of «small pores» of 66%). This diversity reflects different manufacturing *chaînes opératoires* between sites: differences in terms of the nature of the clay, quantity, nature and granulometry of non-plastic inclusions, intensity of handling, and firing conditions (Bronitsky, 1986, p. 226; Rice, 1987, p. 351; Rye, 1981, pp. 40 and 122; Shepard, 1956, p. 126; Skibo, 2013, p. 40). For example, at Pendimoun, the small percentage of overall porosity of some samples (groups AP2 and AP3) and the absence of very small pores (less than 0.1  $\mu\text{m}$ ) are to be compared with petrographic information. Sherds investigated are all made of granitoid earth and comprised very large quantities of non-plastic inclusions and a very small amount of clay matrix (Binder & Sénépart, 2010). This specificity of the ceramic paste could explain the absence of very small pores, that are probably related to clay structures and cannot exist if no clay fine fraction is present. At Clairvaux, the porosity seems to be related to the level of *savoir-faire* (Pétrequin and Pétrequin, 2016b): the best made ceramics generally have low overall porosity and high amount of «small pores».

Figure 4: Overall porosity versus «small pores» (diameter < 1  $\mu\text{m}$ ) depending on the sites investigated.

Relationship between porosity and preservation of lipids

403  
404

405 Given the diversity of environmental contexts considered in this study, the diameter of the pores  
406 appears to impact different types of lipids degradation processes.

407 First, our results confirm that the presence of «small pores» limits the degradation of lipids by  
408 microorganisms, as supposed in the literature. Generally larger than 1  $\mu\text{m}$ , (Davis et al. 1990, p. 21)  
409 most of bacteria and fungi are not able to enter pores smaller than this size. Thus, the lipids within  
410 the ceramic matrix are protected from microbial degradation (Evershed, 1993, 2008; Heron et al.,  
411 1991; Heron and Evershed, 1993; Matlova et al., 2017; Saboyainsta and Maubois, 2000). This  
412 property has been exploited in food science for microfiltration: porous ceramic fabrics with pore  
413 diameters under 1.4  $\mu\text{m}$  are used as effective milk microfiltration devices, removing up to 99.75% of  
414 microorganisms responsible for the biochemical degradation of milk (Saboyainsta and Maubois,  
415 2000; Trouvé et al., 1991). The impact of porosity on the degradation of lipids by biochemical  
416 degradation was probably important at the site of Pendimoun, but limited at Clairvaux XIV and  
417 Cuciurpula respectively due to the anoxic context of Clairvaux and the acidic sediments of Cuciurpula  
418 (Drieu et al., 2018, submitted) considerably reducing microbial activity.

419 Other degradation processes therefore need to be considered to explain the impact of porosity on  
420 the preservation of lipids at Clairvaux. In this wet environment, reduced transport of water through  
421 porosity is more likely to explain good preservation of lipids in «small pores». Following Poiseuille  
422 equation, for a laminar flow of water, the smaller the radius of the pore the slower the flow rates  
423 through it. In «small pores», the slowing of the water flow probably limits the leaching of absorbed  
424 lipids, and possibly reduces hydrolysis. A similar hypothesis has also been suggested to explain the  
425 poor preservation of chlorine in Late Neolithic salt moulds (Ard and Weller, 2012). This type of  
426 degradation process may have also occurred at Pendimoun. Indeed, despite the limited rainfalls of  
427 the Mediterranean climate, this rock shelter is exposed to a significant water flow related to its  
428 geological location, as evidenced by the substantial calcium carbonate deposits on the potsherds  
429 from the site (Binder et al., 1993). At Cuciurpula, leaching is probably limited as the site is open-air,  
430 without rock walls favouring water flow.

431  
432

433 The effect of other parameters on lipid degradation in archaeological samples should also be  
434 examined in the future.

435 First, the impact of pottery surface treatment (slipping, burnishing) on the absorption and the  
436 degradation of organic matter has never been studied in-depth, to the best of our knowledge (Reber,  
437 2007). However, this type of treatment considerably modifies the surface of the pots by promoting  
438 smaller pores at the surface of the walls, probably affecting both the preservation of lipids and the  
439 amount absorbed during pottery use (Correa-Ascencio and Evershed, 2013; Reber, 2007). A protocol  
440 for coating the edges of potsherds with polymer resin is under development to specifically measure  
441 the porosity of the internal surface of the vessels. This investigation will be particularly useful to  
442 better understand some samples from Pendimoun that display evidence of deep burnishing (Binder  
443 et al., 1993; Binder & Maggi, 2001), not reflected in the core porosity measured in the present study.  
444 Secondly, hydrolysis is not the only chemical reaction responsible for the degradation of lipids in  
445 archaeological samples: radical oxidation, photo-oxidation, and reduction also affect the lipid content  
446 (Aillaud, 2001; Heron and Evershed, 1993) and porosity has probably no impact on it.

447 Finally, the actual use of pottery is a key parameter influencing the amount of lipids absorbed and  
448 preserved in archaeological potsherds. The absence of lipids in numerous samples from Pendimoun  
449 may not be due to their degradation but to specific use of pottery in this early phase of the Neolithic  
450 in the western Mediterranean, to transform cereals or to store water, for example, as suggested by  
451 other researchers (Spiteri et al., 2017).

452

453

## 454 CONCLUSION

455

456

457 This article has revealed that when potsherds are exposed to normal microbial activity (as at the site  
458 of Pendimoun) or to water (at Clairvaux XIV, and to a lesser extent at Pendimoun), the range of  
459 porosity inside the pottery walls is of importance for the preservation of lipids. When trapped in  
460 «small pores» (less than 1  $\mu\text{m}$  of diameter), lipids are protected from microorganisms, but also from  
461 leaching. A high abundance of «small pores» of diameter  $< 1 \mu\text{m}$  in pottery walls favours thus the  
462 preservation of lipids in archaeological samples, by reducing biological (microorganism activity),  
463 physical (leaching) and possibly chemical (hydrolysis) degradation.

464 In very specific environments when leaching is limited, and microorganism activity reduced, porosity  
465 appears to have a limited impact on the preservation of lipids. The site of Cuciurpula considered in  
466 this study meets these criteria, but other types of archaeological contexts, such as arid or frozen  
467 environments, should be considered and studied in the future.

468 These first results need now to be confirmed with new analyses of larger sample sets from a range of  
469 environmental contexts (acid and basic soils, arid, frozen and submerged environments). A better  
470 understanding of the preservation of lipids in porous ceramic matrices could lead to more selective  
471 sampling of pottery in the future, avoiding the destruction of archaeological potsherds unlikely to  
472 have preserved lipids. Secondly, mercury intrusion porosimetry can be used as a new tool for  
473 functional analysis allowing a better understanding of the process of penetration of organic  
474 substances into the porous walls of ceramic vessels and the degradation likely to have occurred. In  
475 particular, this technique can be used to understand the use of ceramic vessels yielding small  
476 amounts of lipids, such as in the Mediterranean.

477

478

## 479 ACKNOWLEDGMENTS

480

481

482 This research was partly funded by a grant from the Agence Nationale de la Recherche for the project  
483 'Western Mediterranean Impressed Wares. An interdisciplinary research on Early Neolithic pottery  
484 (6th millennium cal BCE): sourcing, production, uses and transfers' (ANR n°14CE310009; 2015–2018;  
485 dir.: D. Binder). We thank the ICN (Institute of Chemistry of Nice, UMR 7272 UNS – CNRS) where gas  
486 chromatography and gas chromatography-mass spectrometry analyses were performed. We are also  
487 thankful to Jasmine Lundy for her careful re-reading of this article and to reviewers for their fruitful  
488 considerations that helped to improve this article.

489

490

## 491 REFERENCES

492  
493  
494 Adrian De la Fuente, G., Vera, S.D., 2015. Using image analysis software (IAS) for the technological  
495 characterization of archaeological ceramics: scope, limitations and perspectives. *Chungara Rev.*  
496 *Antropol. Chil.* 47, 257–265.  
497  
498  
499 Aprile, A., Castellano, G., Eramo, G., 2014. Combining image analysis and modular neural networks  
500 for classification of mineral inclusions and pores in archaeological potsherds. *J. Archaeol. Sci.* 50, 262-  
501 272. <https://doi.org/10.1016/j.jas.2014.07.017>  
502  
503  
504 Aillaud, S., 2001. Field and laboratory studies of diagenetic reactions affecting lipid residues absorbed  
505 in unglazed archaeological pottery vessels. PhD thesis, University of Bristol.  
506  
507  
508 Ard, V., Weller, O., 2012. Les vases de «type Champ-Durand»: témoins d’une exploitation du sel au  
509 Néolithique récent dans le Marais poitevin, in: Joussaume, R. (Ed.), *L’enceinte Néolithique de Champ-*  
510 *Durand à Nieul-Sur-l’Autise (Vendée)*. Assoc. des Publ. Chauvinoises, Chauvigny, pp. 309–333.  
511  
512  
513 Binder, D., Brochier, J.-E., Duday, H., Helmer, D., Marival, P., Thiebault, S., Wattez, J., 1993. L’abri  
514 Pendimoun à Castellar (Alpes-Maritimes). Nouvelles données sur le complexe culturel de la  
515 céramique imprimée méditerranéenne dans son contexte stratigraphique. *Gall. Préhistoire* 35, 177–  
516 251.  
517  
518  
519 Binder, D., Lanos, P., Angeli, L., Gomart, L., Guilaine, J., Manen, C., Maggi, R., Muntoni, I.M., Panelli,  
520 C., Radi, G., Tozzi, C., Arobba, D., Battentier, J., Brandaglia, M., Bouby, L., Briois, F., Carré, A., Delhon,  
521 C., Gourichon, L., Marival, P., Nisbet, R., Rossi, S., Rowley-Conwy, P., Thiebault, S., 2017. Modelling  
522 the earliest north-western dispersal of Mediterranean Impressed Wares: new dates and Bayesian  
523 chronological model. *Documenta Praehistorica* 44, 54–77. <http://dx.doi.org/10.4312/dp.44.4>  
524  
525  
526 Binder, D., Maggi, R., 2001. Le Néolithique ancien de l’arc liguro-provençal. *Bull. Soc. Préhist. Fr.* 98,  
527 411–422.  
528  
529  
530 Binder, D., Sénépart, I., 2010. La séquence de l’Impresso-Cardial de l’abri Pendimoun et l’évolution  
531 des assemblages céramiques en Provence, in: Manen, C., Convertini, F., Binder, D., Sénépart, I. (Eds.),  
532 *Premières Sociétés Paysannes de Méditerranée Occidentale : Structures Des Productions*  
533 *Céramiques*. Séance de La Société Préhistorique Française, Toulouse, 11-12 Mai 2007. *Soc. Préhist.*  
534 *Fr.*, Paris, pp. 149–167.  
535  
536

537 Bronitsky, G., 1986. The use of materials science techniques in the study of pottery construction and  
538 use. *Adv. Archaeol. Method Theory* 9, 209–276. [https://doi.org/10.1016/B978-0-12-003109-2.50008-](https://doi.org/10.1016/B978-0-12-003109-2.50008-8)  
539 [8](https://doi.org/10.1016/B978-0-12-003109-2.50008-8)  
540  
541  
542 Carvalho, A.P., Vaz, M.F., Pires, J., Samora, M.J., 2006. Characterisation of ceramic pastes of  
543 Portuguese ancient tiles. *Mater. Sci. Forum* 514–516, 1648–1652.  
544 <https://doi.org/10.4028/www.scientific.net/MSF.514-516.1648>  
545  
546  
547 Charters, S., Evershed, R.P., Quye, A., Blinkhorn, P.W., Reeves, V., 1997. Simulation experiments for  
548 determining the use of ancient pottery vessels: the behaviour of epicuticular leaf wax during boiling  
549 of a leafy vegetable. *J. Archaeol. Sci.* 24, 1–7. <https://doi.org/10.1006/jasc.1995.0091>  
550  
551 Correa-Ascencio, M., Evershed, R.P., 2013. High throughput screening of organic residues in  
552 archaeological potsherds using direct acidified methanol extraction. *Anal. Methods* 6, 1330–1340.  
553 <https://doi.org/10.1039/c3ay41678j>  
554  
555  
556 Craig, O.E., Steele, V.J., Fischer, A., Hartz, S., Andersen, S.H., Donohoe, P., Glykou, A., Saul, H., Jones,  
557 D.M., Koch, E., Heron, C.P., 2011. Ancient lipids reveal continuity in culinary practices across the  
558 transition to agriculture in Northern Europe. *Proc. Natl. Acad. Sci. U. S. A.* 108 (44), 17910–17915.  
559 <https://doi.org/10.1073/pnas.1107202108>  
560  
561  
562 Davis, B.D., Dulbecco, R., Eisen H.N., Ginsberg, H.S., 1990. *Microbiology*, 4th ed. Lippincott,  
563 Philadelphia.  
564  
565  
566 Debono Spiteri, C., Gillis, R.E., Roffet-Salque, M., Castells Navarro, L., Guilaine, J., Manen, C.,  
567 Muntoni, I.M., Segui, M.S., Urem-Kotsou, D., Whelton, H.L., Craig, O.E., Vigne, J.-D., Evershed, R.P.,  
568 2016. Regional asynchronicity in dairy production and processing in early farming communities of the  
569 northern Mediterranean. *Proc. Natl. Acad. Sci.* 113 (48), 13594–13599.  
570 <https://doi.org/10.1073/pnas.1607810113>  
571  
572  
573 DeLaune, R., Reddy, C., Patrick, W., 1981. Organic matter decomposition in soil as influenced by pH  
574 and redox conditions. *Soil Biol. Biochem.* 13 (6), 533–534.  
575  
576  
577 Den Dooren De Jong, I., Dauvillier, M.M., Roman, W., 1961. On the formation of adipocere from fats.  
578 *Antonie Van Leeuwenhoek* 27 (1), 337–361.  
579  
580

581 Drieu, L., Mirabaud, S., Roffet-Salque, M., Blasco, T., Pétrequin, P., Pétrequin, A.-M., Evershed, R.P.,  
582 Regert, M., submitted. Defining pottery use and exploitation of natural products at Clairvaux XIV  
583 during the Middle Neolithic. Settling watery landscapes in Europe: archaeology of pile-settlements of  
584 Neolithic-Bronze Age, *Themes in Contemp. Archaeol.*  
585  
586  
587 Drieu, L., Peche-Quilichini, K., Lachenal, T., Regert, M., 2018. Domestic activities and pottery use in  
588 the Iron Age Corsican settlement of Cuciurpula revealed by organic residue analysis. *J. Archaeol. Sci.*  
589 *Rep.* 19, 213-223. <https://doi.org/10.1016/j.jasrep.2018.02.032>  
590  
591  
592 Eglinton, G., Logan, G.A., Ambler, R., Boon, J., Perizonius, W., 1991. Molecular preservation. *Philos.*  
593 *Trans. R. Soc. B Biol. Sci.* 333 (1268), 315–328. <https://doi.org/10.1098/rstb.1991.0081>  
594  
595  
596 Evershed, R.P., 2008. Organic residue analysis in archaeology: the archaeological biomarker  
597 revolution. *Archaeometry* 50 (6), 895–924. <https://doi.org/10.1111/j.1475-4754.2008.00446.x>  
598  
599  
600 Evershed, R.P., 1993. Biomolecular archaeology and lipids. *World Archaeol.* 25 (1), 74–93.  
601 <https://doi.org/10.1080/00438243.1993.9980229>  
602  
603  
604 Evershed, R.P., Charters, S., Quye, A., 1995. Interpreting lipid residues in archaeological ceramics:  
605 Preliminary results from laboratory simulations of vessel use and burial. *Mater. Res. Symp. Proc.* 352  
606 (85), 85–95. <https://doi.org/10.1557/PROC-352-85>  
607  
608  
609 Evershed, R.P., Stott, Evershed, R.P., Copley, M.S., Dickson, L., Hansel, F.A., 2008a. Experimental  
610 evidence for the processing of marine animal products and other commodities containing  
611 polyunsaturated fatty acids in pottery vessels. *Archaeometry* 50 (1), 101–113.  
612 <https://doi.org/10.1111/j.1475-4754.2007.00368.x>  
613  
614  
615 Evershed, R.P., Heron, C., Goad, L.J., 1990. Analysis of organic residues of archaeological origin by  
616 high-temperature gas chromatography and gas chromatography-mass spectrometry. *Analyst* 115,  
617 1339–1342. <https://doi.org/10.1039/AN9901501339>  
618  
619  
620 Evershed, R.P., Payne, S., Sherratt, A.G., Copley, M.S., Coolidge, J., Urem-Kotsu, D., Kotsakis, K.,  
621 Özdoğan, M., Özdoğan, A.E., Nieuwenhuysse, O., Akkermans, P., Bailey, D., Andeescu, R.R., Campbell,  
622 S., Farid, S., Hodder, I., Yalman, N., Özbaşaran, M., Biçakci, E., Garfinkel, Y., Levy, T., Burton, M.M.,  
623 2008b. Earliest date for milk use in the Near East and southeastern Europe linked to cattle herding.  
624 *Nature* 455, 528–531. <https://doi.org/10.1038/nature07180>  
625

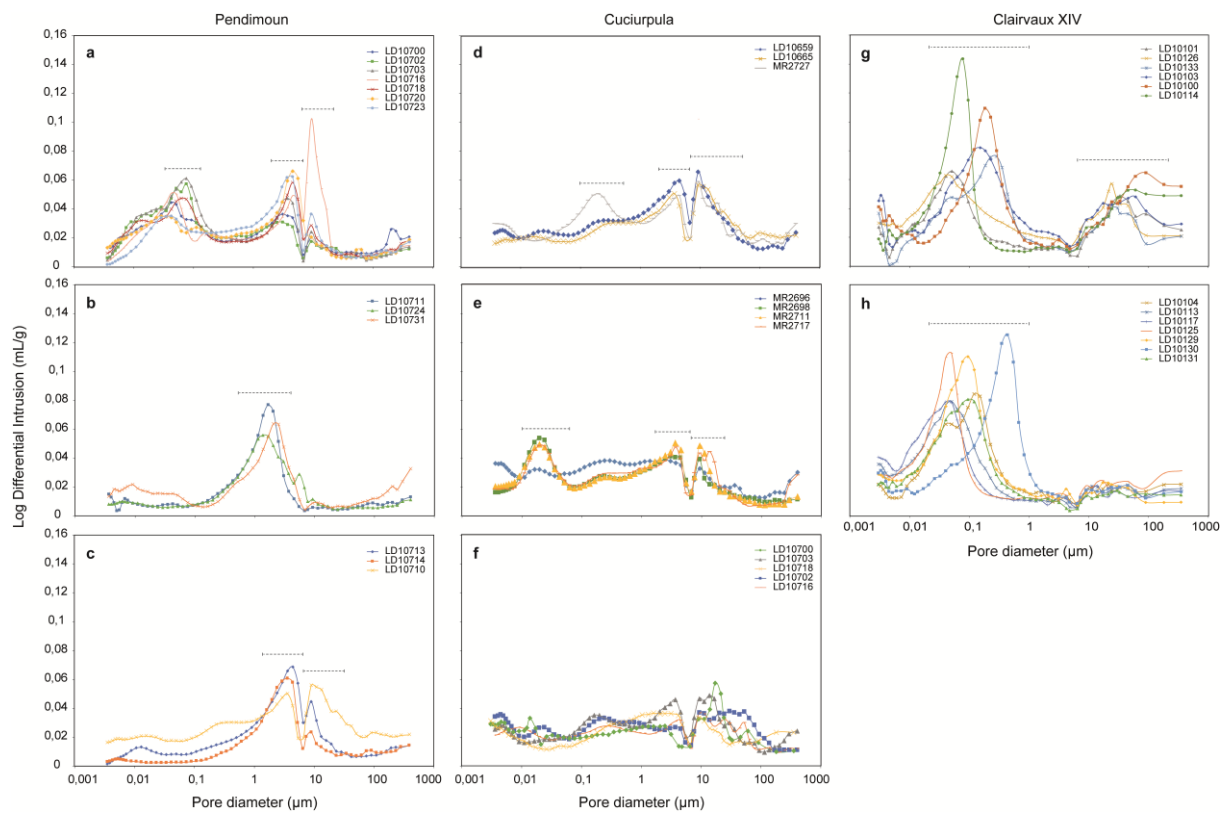
626  
627 Fanti, L., Drieu, L., Mazuy, A., Blasco, T., Lugliè, C., Regert, M., 2018. The role of pottery in Middle  
628 Neolithic societies of western Mediterranean (Sardinia, Italy, 4500-4000 cal BC) revealed through an  
629 integrated morphometric, use-wear, biomolecular and isotopic approach. *J. Archaeol. Sci.* 93, 110-  
630 128. <https://doi.org/10.1016/j.jas.2018.03.005>  
631  
632  
633 Gabriele, M., 2014. La circolazione delle ceramiche del Neolitico nel medio e alto Tirreno e nell'area  
634 ligure-provenzale. Studi di provenienza. PhD Thesis Università di Pisa, Université de Nice Sophia-  
635 Antipolis.  
636  
637  
638 Giesche, H., 2006. Mercury porosimetry: a general (practical) overview. *Part. Part. Syst. Charact.* 23  
639 (1), 9–19. <https://doi.org/10.1002/ppsc.200601009>  
640  
641  
642 Gomart, L., Weiner, A., Gabriele, M., Durrenmath, G., Sorin, S., Angeli, L., Colombo, M., Fabbri, C.,  
643 Maggi, R., Panelli, C., Pisani, D.F., Radi, G., Tozzi, C., Binder, D., 2017. Spiralled patchwork in pottery  
644 manufacture and the introduction of farming to Southern Europe. *Antiquity* 91 (360), 1501–1514.  
645 <https://doi.org/10.15184/aqy.2017.187>  
646  
647  
648 Heron, C., Evershed, R.P., 1993. The analysis of organic residues and the study of pottery use.  
649 *Archaeol. Method Theory* 5, 247–284.  
650  
651  
652 Heron, C., Evershed, R.P., Goad, L.J., 1991. Effects of migration of soil lipids on organic residues  
653 associated with buried potsherds. *J. Archaeol. Sci.* 18, 641–659. [https://doi.org/10.1016/0305-](https://doi.org/10.1016/0305-4403(91)90027-M)  
654 [4403\(91\)90027-M](https://doi.org/10.1016/0305-4403(91)90027-M)  
655  
656  
657 Klemm, A.J., 2009. Microstructural characterisation of porous construction materials – major  
658 challenges. *Comput. Method Exp. Mater. Charact.* IV 64, 395–406.  
659  
660  
661 Kulkova, M., Kulkov, A., 2016. The identification of organic temper in Neolithic pottery from Russia  
662 and Belarus. *Old Potters Alm.* 21, 2–12.  
663  
664  
665 Lapp, E.C., 2012. A water absorption analysis of Nabatean, North African and other clay lamp fabrics  
666 unearthed at the Red Sea Port of Roman Aila (Aqaba, Jordan). *Archaeometry* 54 (1), 56–79.  
667 <https://doi.org/10.1111/j.1475-4754.2011.00611.x>  
668  
669



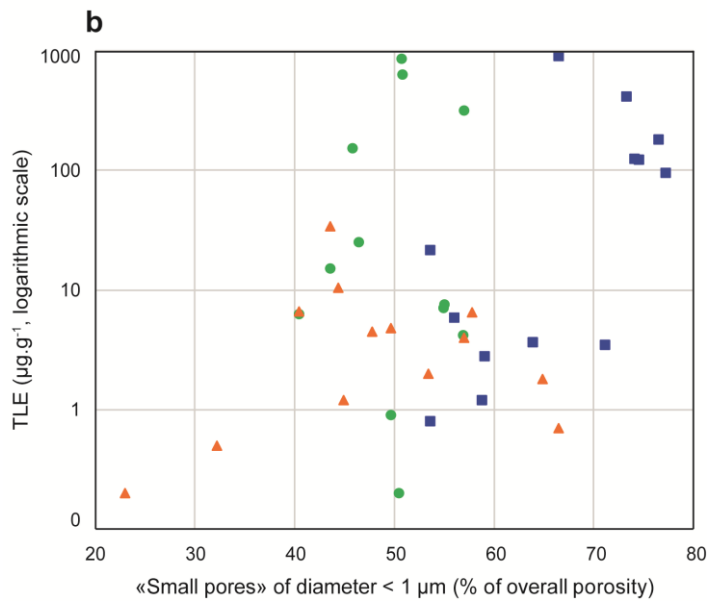
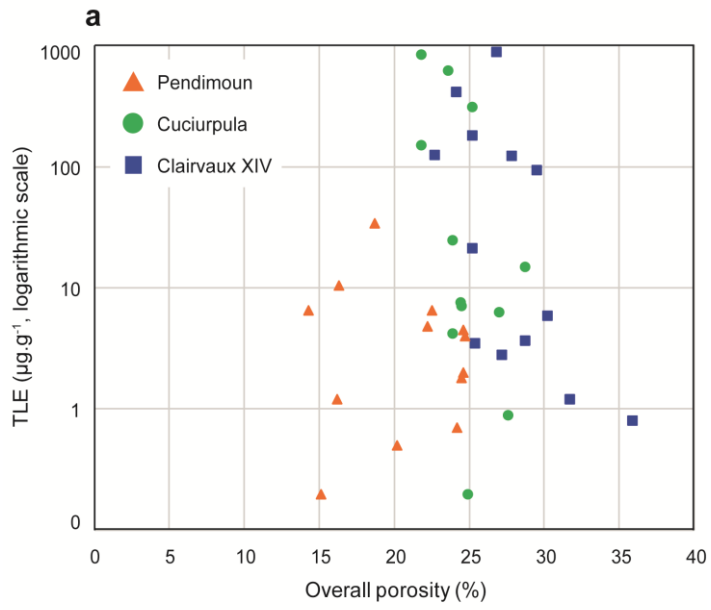
670 Maniatis, Y., Tsirtsoni, Z., 2002. Characterization of a black residue in a decorated Neolithic pot from  
671 Dikili Tash, Greece: an unexpected result. *Archaeometry* 44 (2), 229–239.  
672 <https://doi.org/10.1111/1475-4754.t01-1-00055>  
673  
674  
675 Matlova, V., Roffet-Salque, M., Pavlu, I., Kyselka, J., Sedlarova, I., Filip, V., Evershed, R.P., 2017.  
676 Defining pottery use and animal management at the Neolithic site of Bylany (Czech Republic). *J.*  
677 *Archaeol. Sci. Rep.* 14, 262–274. <https://doi.org/10.1016/j.jasrep.2017.05.028>  
678  
679  
680 Morariu, V., Bogdan, M., Ardelean, I., 1977. Ancient pottery: its pore structure. *Archaeometry* 19 (2),  
681 187–192. <https://doi.org/10.1111/j.1475-4754.1977.tb00197.x>  
682  
683  
684 Moraru, L., Szendrei, F., 2010. Ancient pottery analysis using SEM image processing. *Eur. J. Sci. Theol.*  
685 6 (2), 69–78.  
686  
687  
688 Moucawi, J., Fustec, E., Jambu, P., Jacquesy, R., 1981. Decomposition of lipids in soils: free and  
689 esterified fatty acids, alcohols and ketones. *Soil Biol. Biochem.* 13 (6), 461–468.  
690 [https://doi.org/10.1016/0038-0717\(81\)90035-3](https://doi.org/10.1016/0038-0717(81)90035-3)  
691  
692  
693 Namdar, D., Stacey, R.J., Simpson, S.J., 2009. First results on thermally induced porosity in chlorite  
694 cooking vessels from Merv (Turkmenistan) and implications for the formation and preservation of  
695 archaeological lipid residues. *J. Archaeol. Sci.* 36, 2507–2516.  
696 <https://doi.org/10.1016/j.jas.2009.07.003>  
697  
698  
699 Pecci, A., Degl’Innocenti, E., Giorgi, G., Ontiveros, M.Á.C., Cantini, F., Potrony, E.S., Alós, C., Miriello,  
700 D., 2015. Organic residue analysis of experimental, medieval, and post-medieval glazed ceramics.  
701 *Archaeol. Anthropol. Sci.* 8 (4), 879–890. <https://doi.org/10.1007/s12520-015-0262-3>  
702  
703  
704 Pecci, A., Gabrieli, R.S., Inserra, F., Cau, M.A., Waksman, S.Y., 2016. Preliminary results of the organic  
705 residue analysis of 13th century cooking wares from a household in Frankish Paphos (Cyprus). *STAR :*  
706 *Sci. Technol. Archaeol. Res.* 1 (2), 99–105. <https://doi.org/10.1080/20548923.2016.1183960>  
707  
708  
709 Peche-Quilichini, K., 2010. Le vase de fondation zoomorphe du Premier Âge du fer de Cuciurpula  
710 (Serra-di-Scopamene/Sorbollano, Corse-du-Sud). *Bull. Société Préhistorique Fr.* 107 (2), 371–381.  
711  
712

713 Peche-Quilichini, K., Delvaux, S., Lachenal, T., Grevey, A.-L., Amici, S., de Lanfranchi, F., Bartoloni, G.,  
714 Milletti, M., Bergerot, L., Mottolese, C., 2015. L'espace domestique au Bronze final et au premier âge  
715 du Fer dans le sud de la Corse. *Trab. Prehist.* 72 (2), 259–281. <https://doi.org/10.3989/tp.2015.12154>  
716  
717  
718 Pétrequin, P., 2016. Le “Néolithique Moyen Bourguignon” (N.M.B.) et la problématique de recherche,  
719 in: Pétrequin, P., Pétrequin, A.-M. (Eds.), *Clairvaux et Le “Néolithique Moyen Bourguignon.”* Presses  
720 univ. de Franche-Comté et CRAVA, Besançon, pp. 11–19.  
721  
722  
723 Pétrequin, P., Pétrequin, A.-M., 2016a. Evaluation archéologique et découverte des villages  
724 Néolithique moyen II du Grand Lac de Clairvaux, in: Pétrequin, P., Pétrequin, A.-M. (Eds.), *Clairvaux et*  
725 *Le “Néolithique Moyen Bourguignon.”* Presses univ. de Franche-Comté et CRAVA, Besançon, pp. 23–  
726 49.  
727  
728  
729 Pétrequin, P., Pétrequin, A.-M., 2016b. Techniques céramiques : dégraissants, outillages, montage,  
730 cuisson et styles, in: Pétrequin, P., Pétrequin, A.-M. (Eds.), *Clairvaux et Le “Néolithique Moyen*  
731 *Bourguignon.”* Presses univ. de Franche-Comté et CRAVA, Besançon.  
732  
733  
734 Reber, E., 2007. The well-tempered pottery analysis: residue and typological analysis of potsherds  
735 from the Lower Mississippi Valley, in: Barnard, H., Eerkens, J.W. (Eds.), *Theory and Practice of*  
736 *Archaeological Residue Analysis.* Archaeopress, Oxford, pp. 148–160.  
737  
738  
739 Reedy, C.L., Anderson, J., Reedy, T.J., Liu, Y., 2014. Image Analysis in Quantitative Particle Studies of  
740 Archaeological Ceramic Thin Sections. *Adv. Archaeol. Pract.* 2(4), 252-268.  
741 <https://doi.org/10.7183/2326-3768.2.4.252>  
742  
743  
744  
745 Regert, M., 2011. Analytical strategies for discriminating archeological fatty substances from animal  
746 origin. *Mass Spectrom. Rev.* 30 (2), 177–220. <https://doi.org/10.1002/mas.20271>  
747  
748  
749 Rice, P.M., 1987. *Pottery analysis, a sourcebook.* The Univ. of Chicago Press, Chicago and London.  
750  
751  
752 Rye, O. S. (1981). *Pottery technology: principles and reconstruction.* Taraxacum, Washington DC.  
753 Saboyainsta, L.V., Maubois, J.-L., 2000. Current developments of microfiltration technology in the  
754 dairy industry. *Le lait* 80 (6), 541–553. <https://doi.org/10.1051/lait:2000144>  
755  
756

757 Salque, M., Bogucki, P.I., Pyzel, J., Sobkowiak-Tabaka, I., Grygiel, R., Szmyt, M., Evershed, R.P., 2013.  
758 Earliest evidence for cheese making in the sixth millennium BC in northern Europe. *Nature* 493, 522–  
759 525. <https://doi.org/10.1038/nature11698>  
760  
761  
762 Sanders, H.P., 1973. Pore-size distribution determinations in Neolithic, Iron Age, Roman and other  
763 pottery. *Archaeometry* 15 (1), 159–161. <https://doi.org/10.1111/j.1475-4754.1973.tb00085.x>  
764  
765  
766 Shepard, A.O., 1956. *Ceramics for the archaeologist*. Carnegie Institution of Washington,  
767 Washington, DC.  
768  
769  
770 Skibo, J.M., 2013. *Understanding pottery function, Manuals in Archaeological Methods, Theory and*  
771 *Technics*. Springer, New York.  
772  
773  
774 Sobott, R., Bente, K., Kittel, M., 2014. Comparative porosity measurements on ceramic materials. *Old*  
775 *Potters Alm.* 19, 18–25.  
776  
777  
778 Spiteri, C., Muntoni, I.M., Craig, O.E., 2017. Dietary Practices at the Onset of the Neolithic in the  
779 Western Mediterranean Revealed Using a Combined Biomarker and Isotopic Approach, in: García  
780 Puchol, O., Salazar García, D.C. (Eds.), *Times of Neolithic Transition along the Western*  
781 *Mediterranean, Fundamental Issues in Archaeology*. Springer, pp. 253–279.  
782  
783  
784 Thér, R., 2016. Identification of pottery-forming techniques using quantitative analysis of the  
785 orientation of inclusions and voids in thin sections. *Archaeometry* 58 (2), 222–238.  
786 <https://doi.org/10.1111/arcm.12166>  
787  
788  
789 Trouvé, E., Maubois, J., Piot, M., Madec, M., Fauquant, J., Rouault, A., Tabard, J., Brinkman, G., 1991.  
790 Rétention de différentes espèces microbiennes lors de l'épuration du lait par microfiltration en flux  
791 tangentiel. *Le lait* 71 (1), 1–13. <https://doi.org/10.1051/lait:199111>  
792  
793  
794 Volzone, C., Zagorodny, N., 2014. Mercury intrusion porosimetry (MIP) study of archaeological  
795 pottery from Hualfin Valley, Catamarca, Argentina. *Appl. Clay Sci.* 91-92, 12–15.  
796 <https://doi.org/10.1016/j.clay.2014.02.002>  
797  
798  
799 FIGURES  
800



801  
 802 Figure 1  
 803  
 804



805

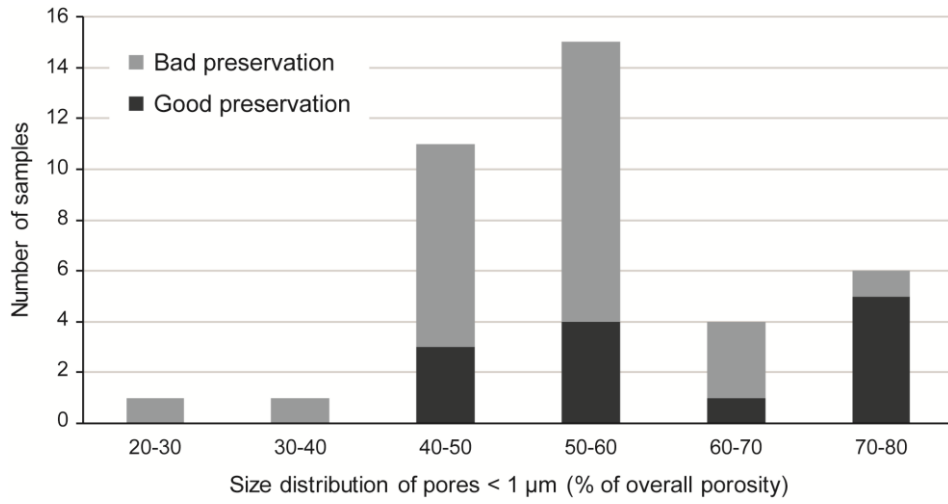
806

Figure 2

807

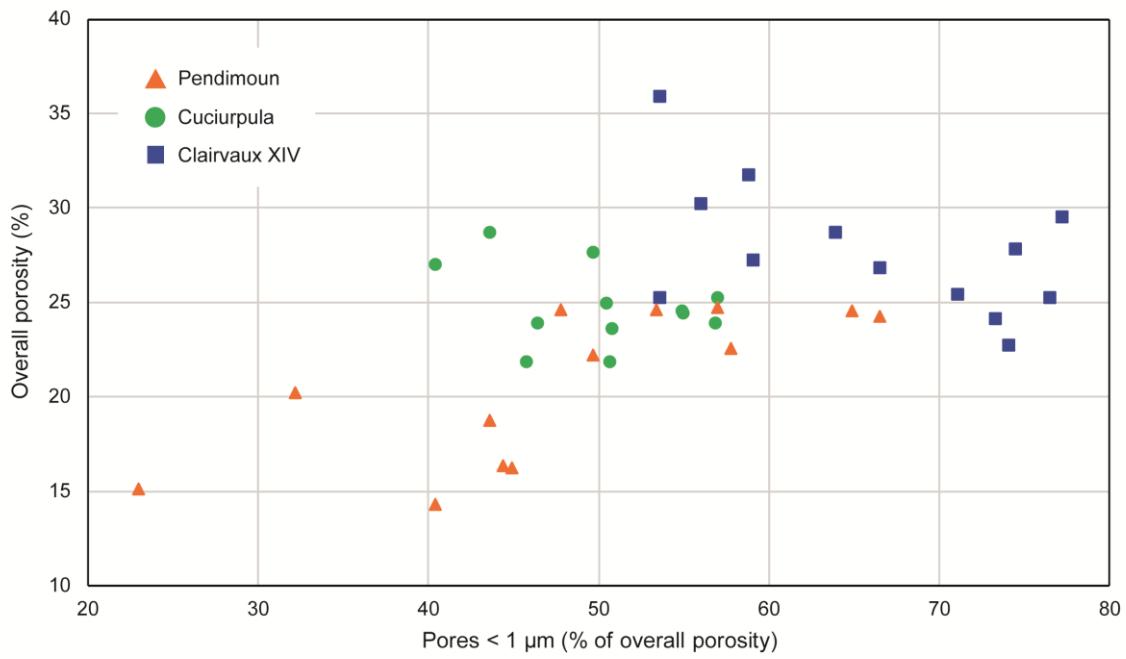
808

809



810  
811 Figure 3

812  
813  
814  
815



816  
817 Figure 4