



# **Robustness and performance of semi-distributed (SWAT) and global (GR4J) hydrological models throughout an observed climatic shift over contrasted French watersheds**

Etienne Brulebois, Marjorie Ubertosi, Thierry Castel, Yves Richard, Sabine Sauvage, Jose-Miguel Sanchez-Perez, Nicolas Le Moine, Philippe Amiotte-Suchet

## **► To cite this version:**

Etienne Brulebois, Marjorie Ubertosi, Thierry Castel, Yves Richard, Sabine Sauvage, et al.. Robustness and performance of semi-distributed (SWAT) and global (GR4J) hydrological models throughout an observed climatic shift over contrasted French watersheds. Open Water Journal, 2018, 5 (1), pp.41-56. hal-02368907

**HAL Id: hal-02368907**

**<https://hal.science/hal-02368907>**

Submitted on 18 Nov 2019

**HAL** is a multi-disciplinary open access archive for the deposit and dissemination of scientific research documents, whether they are published or not. The documents may come from teaching and research institutions in France or abroad, or from public or private research centers.

L'archive ouverte pluridisciplinaire **HAL**, est destinée au dépôt et à la diffusion de documents scientifiques de niveau recherche, publiés ou non, émanant des établissements d'enseignement et de recherche français ou étrangers, des laboratoires publics ou privés.



2018

# Robustness and performance of semi-distributed (SWAT) and global (GR4J) hydrological models throughout an observed climatic shift over contrasted French watersheds

Etienne Brulebois

*Biogéosciences, UMR n°6282 CNRS University of Bourgogne Franche-Comté, etienne.brulebois@gmail.com*

Marjorie Ubertosi

*Agroécologie, UMR n°1347 AgroSup Dijon, INRA, University of Bourgogne Franche-Comté, marjorie.ubertosi@agrosupdijon.fr*

Thierry Castel

*Biogéosciences, UMR n°6282 CNRS, University of Bourgogne Franche-Comté, 2A2E Departement, Agrosup Dijon, thierry.castel@u-bourgogne.fr*

Yves Richard

*Biogéosciences, UMR n°6282 CNRS, University of Bourgogne Franche-Comté, yves.richard@u-bourgogne.fr*

Sabine Sauvage

*Ecolab, UMR n°5245 CNRS, INPT, ENSAT, University Paul Sabatier, sabine.sauvage@univ-tlse3.fr*

---

## BYU ScholarsArchive Citation

Brulebois, Etienne; Ubertosi, Marjorie; Castel, Thierry; Richard, Yves; Sauvage, Sabine; Sanchez Perez, José-Miguel; Le Moine, Nicolas; and Amiotte-Suchet, Philippe (2018) "Robustness and performance of semi-distributed (SWAT) and global (GR4J) hydrological models throughout an observed climatic shift over contrasted French watersheds," *Open Water Journal*: Vol. 5 : Iss. 1 , Article 4.

Available at: <https://scholarsarchive.byu.edu/openwater/vol5/iss1/4>

This Article is brought to you for free and open access by the All Journals at BYU ScholarsArchive. It has been accepted for inclusion in Open Water Journal by an authorized editor of BYU ScholarsArchive. For more information, please contact [scholarsarchive@byu.edu](mailto:scholarsarchive@byu.edu), [ellen\\_amatangelo@byu.edu](mailto:ellen_amatangelo@byu.edu).

*See next page for additional authors*

Follow this and additional works at: <https://scholarsarchive.byu.edu/openwater>

---

---

# Robustness and performance of semi-distributed (SWAT) and global (GR4J) hydrological models throughout an observed climatic shift over contrasted French watersheds

## **Cover Page Footnote**

The authors thank Météo-France who provided the precipitation data, as part of an agreement with the University of Burgundy. They also thank the DREAL Bourgogne, especially Marc Philippe, who transferred the runoff time series.

## **Authors**

Etienne Brulebois, Marjorie Ubertosi, Thierry Castel, Yves Richard, Sabine Sauvage, José-Miguel Sanchez Perez, Nicolas Le Moine, and Philippe Amiotte-Suchet



# Robustness and performance of semi-distributed (SWAT) and global (GR4J) hydrological models throughout an observed climatic shift over contrasted French watersheds

Etienne Brulebois<sup>1\*</sup>, Marjorie Ubertosi<sup>2</sup>, Thierry Castel<sup>1</sup>, Yves Richard<sup>1</sup>, Sabine Sauvage<sup>3</sup>, José-Miguel Sanchez Perez<sup>3</sup>, Nicolas Le Moine<sup>4</sup>, Philippe Amiotte-Suchet<sup>1</sup>

<sup>1</sup>UMR n°6282, CNRS University of Bourgogne Franche-Comté

<sup>2</sup>UMR n°1347 AgroSup Dijon, INRA, University of Bourgogne Franche-Comté

<sup>3</sup>UMR n°5245 CNRS, INPT, ENSAT, University Paul Sabatier

<sup>4</sup>UMR n°7619 CNRS, EPHE, University Pierre & Marie Curie

\*Corresponding Author: [etienne.brulebois@u-bourgogne.fr](mailto:etienne.brulebois@u-bourgogne.fr)

---

## ABSTRACT

Many studies about climate change impacts assessment are published every year. These studies commonly use a hydroclimatic modelling chain, whose principle is to feed impact models with climate models outputs. An important step in this process is to test the validity of impact models in a climate change context. However, this step is not frequently applied. The aim of this study is to test the robustness of two hydrological models with distinct conceptualizations: a global and empirical model (GR4J) and a semi-distributed and physically-based model (SWAT). They both have been calibrated and validated over climate contrasted periods. Despite a higher decrease of performance between calibration and validation for the GR4J model, both of them show relative robustness. Moreover, the stability of parameters between the two calibration periods shows that their value are not much influenced by the climate of the calibration period, and consequently remains valid during the entire projection period.

## Keywords

Hydrological models, robustness, climate change, SWAT, GR4J

---

## 1. Introduction

In the past few decades, more and more studies have been dealing with climate change impacts on hydrological cycle (Huntington, 2006; Jiménez Cisneros et al., 2014). Links between global warming and hydrological cycle modification can be assessed by two main ways:

comparisons between observed time series, where the authors highlight trends and/or correlation between hydrological and climate variability (Dai et al., 2009; Gedney et al., 2006; Gerten et al., 2008; Milly et al., 2005), and prospective studies, where future simulated climate data supply hydrological models to analyze their influences on water quality (Boorman, 2003; Ducharne,

2008; Rehana and Mujumdar, 2012; Whitehead et al., 2009) as well as water quantity (Arnell, 1999; Feyen and Dankers, 2009; Henrichs, T. et al., 2002; Lehner et al., 2006). Modeling approach is essential for a better understanding of interactions between the numerous processes involved in the water resources (Kroeze et al., 2012). Over France, several prospective works have studied impacts of climate change on water resources, but they mainly focused on large watersheds: Rhône river (Etchevers et al., 2002; Otlé et al., 2001), Seine river (Boé et al., 2007; Ducharne et al., 2007; Habets et al., 2011), Garonne river (Sauquet et al., 2010; Tisseuil et al., 2010; Grusson, 2016) or Loire river (Ducharne et al., 2010), or even over the entire French metropolitan territory (Boé, 2007; MEDDE, 2012b).

Nevertheless, filling the gap of knowledge of climate change impacts over moderate-size watersheds is a major concern and more regional impact studies should be performed at this scale (Bates et al., 2008). In this context, a prospective study of climate change impacts at watershed scale has been performed over northeastern French watersheds, using spatial disaggregation of general circulation model (GCM) data (Rossi et al., 2014) to feed hydrological models (Brulebois et al., 2015a, 2014; Legras, 2014) at daily scale throughout the entire 21st century. Two catchment hydrological models with distinct conceptualization were chosen: GR4J (global and empirical model) and SWAT (semi-distributed and physical-based model). The SWAT model has already been widely used in climate change impacts studies over a large number of watersheds (Gassman et al., 2007, 2014). GR4J model is less frequently used in climate change context. But some studies exist over the French territory (Lespinas et al., 2014; MEDDE, 2012b).

Before model projection, a primordial question is the validity of the parameters values throughout the simulation period (the next 100 years for example) whereas these parameters have been calibrated during an observed reference period, with a much different climate (Thirel et al., 2015b).

In a short review, Coron et al. (2011) identifies the three common pathologies from which models suffer: dependency of model parameters on the inputs quality and availability, dependency of model parameters on the climate of the calibration period, and low identifiability of parameters value. The first one is not discussed here, due to the reliability of climate data on the two sub-periods. The last one will not be discussed either, because both SWAT and GR4J models have been widely applied and validated on a large number of

watersheds (Gassman et al., 2007; Perrin et al., 2003). Moreover, since GR4J is a few parametrized model, its parameters show an high identifiability (Perrin et al., 2001). But SWAT can be over-parametrized if a large number of parameters are calibrated. A low number of parameters used in calibration can avoid a possible over-parametrization, and permits to keep a high identifiability of their values during calibration process.

The objective of this study is to assess the transposability of each hydrological model (GR4J and SWAT) in a climate change context, i.e, to discuss about the 2nd pathology described by Coron et al (2011).

This essential step is not always performed before model projection, and only few studies exist about this concern. About SWAT model, we note some studies on sensitivity and uncertainty of parameters (van Griensven et al., 2006; Nossent, 2012; White and Chaubey, 2005; Sellami et al., 2016) or cross validation in space (Son and Kim, 2008) and time (Guse et al., 2014; Lévesque et al., 2008). But also studies on multi-calibration on contrasted hydroclimatic period (Zhang et al., 2015, 2011, Grusson, 2016).

The robustness of the GR4J model in context of climate change was less studied. Although Brigode et al., (2013) pointed out the difficulty for lumped rainfall-runoff models (such as GR4J) to simulate streamflow on periods with contrasted climate, Seiller et al. (2012) concluded, after a comparison between twenty lumped rainfall-runoff models, to the better transposability across periods of GR4J than the others. Furthermore, Le Lay et al. (2007) applied GR4J on the Upper Ouémé watershed (Benin) and highlight the relative stability of GR4J parameters across calibration on several periods. Finally, a study comparing projections of several hydrological models (including GR4J and SWAT) has been conducted by Cornelissen et al. (2013), over the Upper Ouémé and the Térou watersheds (Benin).

According to these authors, both SWAT and GR4J models were judged able to simulate future streamflow by calibrating and validating using contrasted period. But because of its lumped conceptualization, the GR4J model does not contribute to improve the knowledge of watershed processes (Cornelissen et al., 2013).

In order to test the robustness of hydrological models throughout climate contrasted periods, several testing schemes can be applied. Most of the time, the DSST method (Differential Split-Sampling Test) is used (Klemes, 1986b). It consists in calibrating and validating the model with distinct periods, and analyzing the simulation accuracy in validation



period. However, this method does not guarantee a strong difference in climate and in its hydrological impacts between calibration and validation periods. In this paper, we propose to assess the robustness and GR4J and SWAT models throughout an observed climate shift, impacting the hydrological cycle.

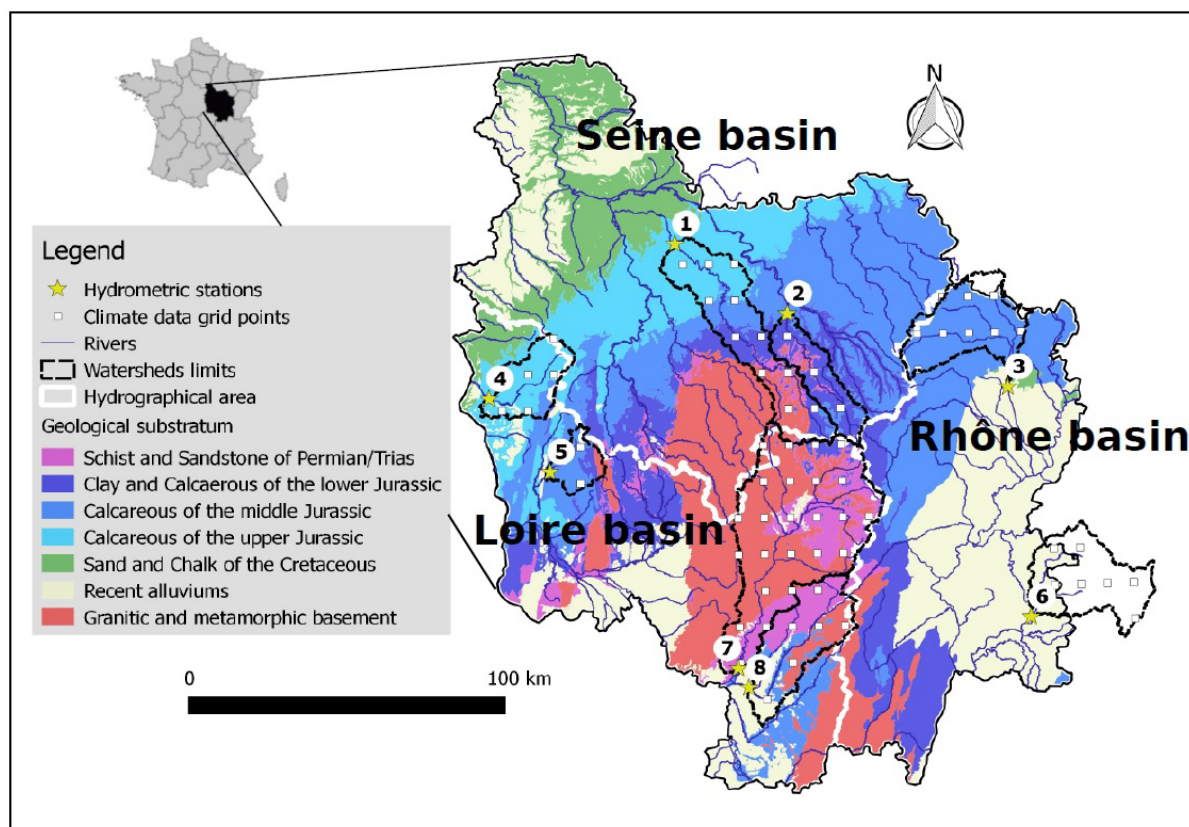
The western Europe has experienced a major change during the last fifty years (Laat and Crok, 2013), which had also been detected over France (Brulebois et al., 2015b), even at Burgundy region scale (Castel et al., 2014 ; Richard, 2014). Over France, the shift consists in an abrupt increase in both minimal and maximal temperatures in 1987/88. At the annual scale, this increase reaches 0.92°C and 1.1°C for minimal and maximal temperatures respectively. In Burgundy, this increase can locally reach 1.37°C and 1.32°C for minimal and maximal temperatures respectively (Richard, 2014). The hydrological response to this shift has been described by Brulebois et al. (2015b) over France, on a selection of 30 watersheds. They have shown a decrease of annual streamflow of 4%, between 1988-2009 and 1969-1987 periods, although an increase of 5% of pre-

cipitations during the same time. This shift gives us the opportunity to assess the transposability of hydrological models throughout an observed climate shift. For this purpose, in this study, both SWAT and GR4J models have been alternatively calibrated and validated on two periods of 8 years, before (1980-1987) and after (1988-1995) the shift. Their robustness and parameters stability have been assessed by comparing the performance decrease between calibration and validation, as well as changes in parameters values between each calibration.

## 2. Materials and methods

### 2.1. Study area

Burgundy is located in North-East of France (Figure 1). It covers an area of about 31,500 km<sup>2</sup> and its elevation varies between 50 m in the North-West to 900 m in the Morvan mountains. It includes several geological contexts: the metamorphic and granitic basement of the Morvan mountains (the northern continuation of the Massif Central), surrounded by sedimentary (mainly



**Figure 1.** Burgundy geological contexts, selected watersheds and climate data grid points

calcareous) rocks of Jurassic and Quaternary alluviums in the Saône and the Loire valleys. Furthermore, the region is divided between three hydrographical areas, which are the headwater of three main French rivers: Seine, Loire and Rhône basins. Burgundy has a well-developed hydrographical network but unequally distributed, because of the spatial heterogeneity of the geological substratum. It is characterized by a high drainage density in the Morvan mountains, with streams supplied by small and superficial groundwater, whereas the surrounding limestones plateau, which are very permeable, show almost no streams because water mainly flows throughout a well-developed karst aquifer.

For these reasons, the water resource in Burgundy is highly fragmented, and could be seriously impacted by climate change. Burgundy climate is mainly semi-continental, with moderate Mediterranean influences in the South, and oceanic influences in the West (Chabin, 2001; Cuccia, 2008). The average annual precipitations during the 1981-2010 period are equal to 850 mm, but show strong regional differences, ranging from 600 to 700 mm in the North, 700 to 900 mm in the Saône valley, and locally rises to 1500 mm in the Morvan mountains. The average annual mini-

mal and maximal temperatures are equal to 6°C and 14°C respectively (Meteo France Station Network).

## 2.2 Hydrometric stations

Daily runoff data were extracted from the “Banque Hydro” database (French Ministry of Ecology, Sustainable Development and Energy) for 8 selected hydrometric stations from 1980-1995. This selection of 8 hydrometric stations (Table 1) was based on several criteria:

- Data reliability according to the station managers;
- Climatic, land-use and geological representativeness of Burgundy;
- Distribution between the three main hydrographical areas (Loire, Rhône and Seine basins)
- Data availability before and after the observed temperature shift (1987/88).

## 2.3. Hydrological models

### 2.3.1 The SWAT model

SWAT is a physically-based and semi-distributed agro-hydrological model, operating at watershed scale, on a daily time step (Arnold et al., 1998). It allows to

N°	River	Outlet	Area (km <sup>2</sup> )	Module (m <sup>3</sup> /s)	Altitude(m) min/mean/max	Geological context	Main land-use
1	Serein	Chablis	1119	8.3	129 / 310 / 596	Calcareous	Agricultural area
2	Armançon	Quincy-le-Vicomte	483	3.5	220 / 357 / 525	Calcareous	Permanent pasture
3	Tille	Arceau	846	7.9	225 / 396 / 591	Calcareous	Forest
4	Nohain	Saint-Martin-sur-Nohain	473	3.5	157 / 237 / 382	Calcareous	Agricultural area
5	Nièvre d'Arzembouy	Poiseux	224	2.5	88 / 282 / 599	Calcareous	Permanent pasture
6	Seille	Saint-Usuge	937	14.9	186 / 289 / 570	Alluvions	Agricultural area
7	Arroux	Rigny-sur-Arroux	2277	23.5	233 / 407 / 897	Metamorphic rocks	Permanent pasture
8	Bourbince	Vitry-en-Charollais	819	7.9	232 / 308 / 653	Schists, metamorphic	Permanent pasture

**Table 1.** Main characteristics of the 8 selected watersheds



simulate hydrology, weather, erosion, plant growth, nutrient cycles, land management and stream routing, at a high resolution, by dividing the simulated watershed into a large number of sub-basins, themselves are further divided into hydrological responses units (HRU). An HRU consists of a homogenous combination of land-use classes, soil types and slope classes. The model takes account of spatialized climate information, at the sub-basin scale, and needs daily precipitations (mm), minimum and maximum temperatures ( $^{\circ}\text{C}$ ), wind speed ( $\text{m.s}^{-1}$ ), relative humidity (%) and solar radiation ( $\text{MJ.m}^{-2}$ ). At the HRU scale and for each time-step, SWAT divides water from rainfalls between soil infiltration and surface runoff, based on the SCS-CN empirical method (USDA-SCS, 1986). The soil is considered as a multi-layer store from where water can be evaporated or transpired by plants according to potential evapotranspiration (PET) value. Among different formulations of PET proposed by SWAT, the Penman-Monteith method (Penman, 1948), which is the most commonly used one, was chosen in this study.

A percolation function brings soil water from the lowest soil layer to the shallow aquifer, where it can be re-evaporated, be drained toward the streamflow, or supply the deep aquifer.

In this study, the SWAT model has been implemented on watersheds using the Arcview GIS interface for SWAT (ArcSWAT).

### 2.3.2 The GR4J model

The GR4J model is a global rainfall-runoff model, developed by the national institute of research in sciences and technologies for environment and agriculture (IRSTEA) (Perrin, 2007). The model is few parameterized with only 4 parameters to calibrate, and includes 2 reservoirs (production and routing) and 2 transfer functions to represent the watershed processes. The model needs daily precipitation and PET to simulate streamflow at the outlet of the watershed. The four parameters are :

- The daily maximum capacity of the production store ( $X_1$ , in mm);
- The groundwater exchange coefficient ( $X_2$ , in mm/day), which allows water to be imported ( $X_2 > 0$ ) or exported ( $X_2 < 0$ ) from the system;
- The daily maximum capacity of the routing store ( $X_3$ , in mm);
- The time base of unit hydrograph ( $X_4$ , in days).

The parameters are automatically calibrated, optimizing an objective function, such as the Nash

coefficient (Nash et Sutcliffe, 1970) and range between a maximum and a minimum fixed by the user. Here, the boundaries have been provided by the developers of the model (Perrin et al., 2003).

### 2.4. Input data

Topography (25 m Digital Elevation Model), land-use information and soil types have been provided by the French Geographical Institute (IGN), the Corine Land Cover 2006 database (1/100.000) and the Infosol database from the French National Institute of the Agronomical Research (INRA, 1998) respectively.

Daily precipitations (mm) have been provided by the MeteoFrance Station Network (MFSN) on the 1961-2011 period. These observed precipitations have been then re-interpolated on a 12 km-grid, in order to get spatialized information over each watershed.

Relative humidity (%), minimal and maximal temperature ( $^{\circ}\text{C}$ ), wind at 2 m above the ground ( $\text{m/s}$ ), and solar radiation ( $\text{MJ/m}^2$ ) have been provided at a daily time step. by the dynamical disaggregation of ERA-INTERIM reanalysis (Simmons et al., 2006) using the regional climate model ARW/WRF (Skamarock et al., 2008) implemented over Burgundy (Castel et al., 2010 ; Xu et al., 2012). These data have been validated on the present time and used with success for impact studies on water balance (Boulard et al., 2015).

### 2.5. Model implementation

#### 2.5.1 Calibration of SWAT and GR4J model

The first step in calibration and validation process of the SWAT model is the identification of sensitive parameters on the implemented watersheds (Arnold et al., 2012a). Such sensitivity analysis can be performed locally (changing values one at a time) or globally (changing values of all parameters). This latter requires a very large number of simulations to be done. Here, a local sensitivity analysis was performed, highlighting the influence of six parameters (Table 2) on the streamflow simulations. These parameters belong to the most sensitive (Nossent, 2012) and the most commonly used (Arnold et al., 2012a) parameters in water cycle calibration. A brief description of each parameter is given below.

The SURLAG coefficient controls the fraction of the total surface runoff which is held in a surface runoff storage before reaching the main channel.

Parameter	Signification	Default value	Range of calibration	Fixed values (min-max)
CN2	Curve number (no unit)	Calculated	+ / - 10%	-10%
SURLAG	Surface runoff lag coefficient (days)	4	0.5-5	0.5
ALPHA_BF	Baseflow alpha factor (days-1)	0.048	0.01-0.1	0.012-0.099
RCHRG_DP	Deep aquifer percolation fraction (no unit)	0.01	0-0.5	0-0.45
GW_DELAY	Groundwater delay time (days)	31	0.5-10	0.9-5.9
GW_QMIN	Threshold depth of water in the shallow aquifer for return flow to occurs (mm)	1000	100-1500	500-1430

**Table 2.** Description of the most sensitive parameters of the SWAT model in our study, with their default values, range of calibration and minimum and maximum values form the semi-automatic-calibration based on 1000 simulations run of SWAT-CUP

The Curve Number depends on the soil permeability, land-use and antecedent soil water conditions, and controls the fraction of infiltrated water from precipitations.

The base flow alpha factor corresponds to the groundwater flow response to changes in recharge. A low value (near 0) indicates a very slow response, while a high value (near 1) indicates a very quick response.

The groundwater delay time is the required time for the water to move from the lowest depth of the soil profile to the shallow aquifer. During this time, water can be removed from the soil by plants or soil uptake.

The threshold depth of water corresponds to the water table needed in the shallow aquifer for return flow to occur. As long as the shallow aquifer has not reached this water table, there is no return flow contribution to the streamflow.

The deep aquifer percolation fraction represents the water quantity removed from the shallow aquifer to the deep aquifer (so which goes out of the system).

Based on manual calibration, the SURLAG parameter has been fixed for the entire project (for all watersheds) at 0.5, and the CN2 parameter has been decreased by 10% for each HRU with regard to its SWAT default value.

The four other parameters have been determined by an automatic calibration using the SWAT-CUP autocalibration program with the “SUF2” tool (Abbaspour et al., 2007a).

The calibration was performed at a daily scale, on the 1977-1995 period, for the 8 watersheds independently, and with 3 years of warm-up period (performance cal-

culate only on the 1980-1995 period). The objective function (O.F) chosen for this calibration was the Nash Efficiency (NSE) criteria (Nash and Sutcliffe, 1970). Only minimum and maximum parameters values are shown (not the values of each watershed) (Table 2).

The GR4J calibration has been performed using the hydromad R. package (Andrews, 2011) at the daily time scale, for each watershed independently, on the 1977-1995 period with 3 years of warm-up. It has been run using the NSE coefficient as the objective function, the Nelder-Mead method as the optimizing algorithm, and the latin-hypercube as the sampling method of parameters (such as in SUFI2 tool in SWAT-CUP program).

### 2.5.2 Model performances in validation on the 1980-2010 period

Model performances have been tested on each calibrated watershed. SWAT simulating streamflow at sub-basin scale, 28 hydrometric stations available within selected watersheds have been used to validate simulation (Figure 2a). All of the 8 watersheds have shown satisfactory performance (NSE > 0.6). At monthly scale, the mean performance (NSE) on the 8 stations reaches 0.83 with SWAT simulation and up to 0.91 with GR4J simulation (Figure 2b).

### 2.6 Cross calibration/validation

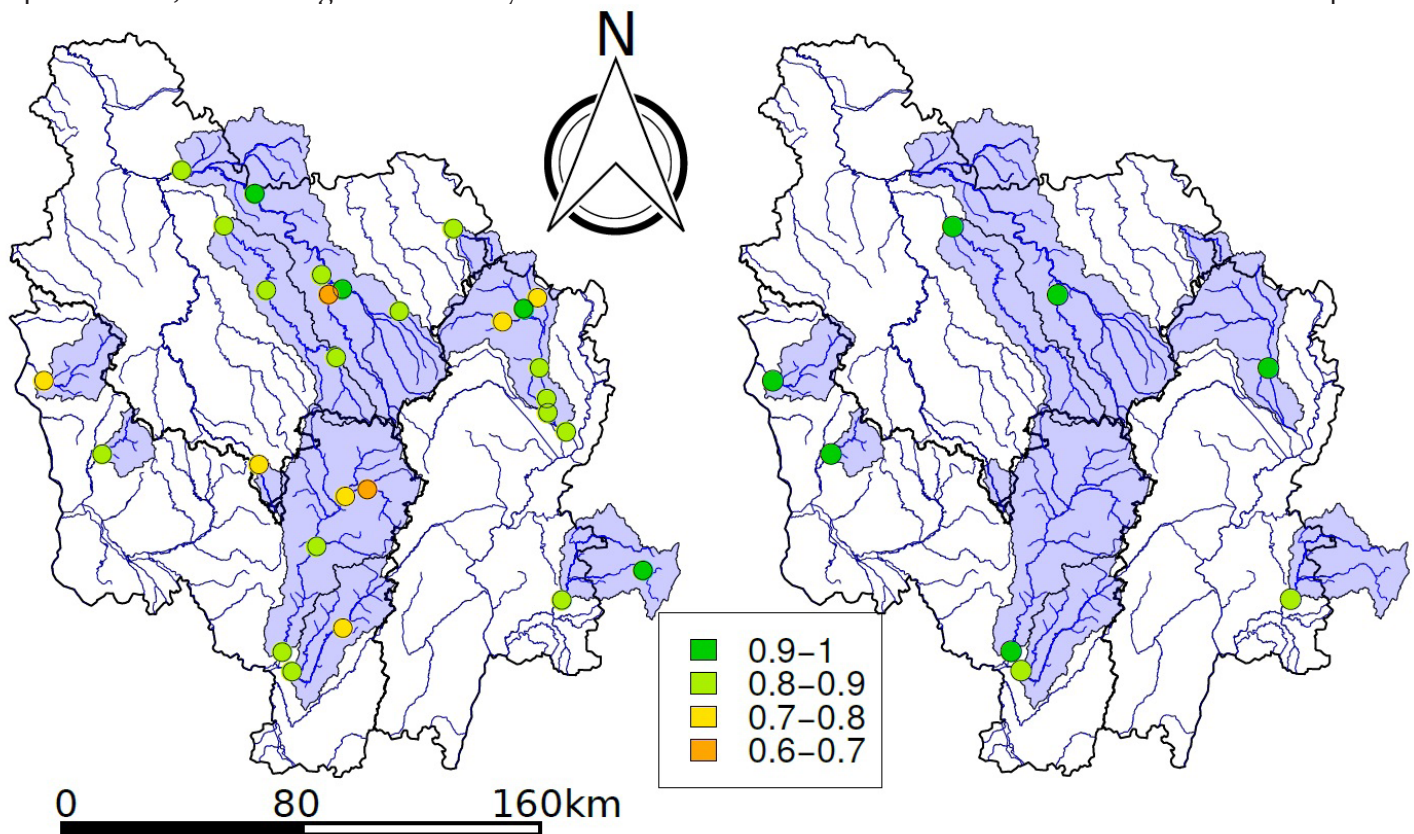
A Split Sample Test (SST) (Klemes, 1986), which is the most frequently used method (Thirel et al., 2015b) is processed to estimate the dependency of parameters on the climate characteristics. This method consists of a cross-calibration and validation tests of the models on two periods with distinct climate characteristics. Based on this scheme, four modalities have been created to test model performances: C1V1 : calibration and validation over the P1 period (1980-1987), C1V2 : calibration over P1 and validation over P2 period (1988-1995), C2V2 : calibration and validation over P2, C2V1: calibration over P2 and validation over P1.

The analysis of performance decrease between modalities 1 and 2, as well as between modality 3 and 4, describes the model robustness throughout two different hydroclimatic periods. This robustness can also be assessed regarding to the error between simulated and observed streamflow.

During calibration processes, the SWAT-CUP program calculates the 95 percentage prediction uncertainty (95PPU), which represents the distribution of output variable, disallowing 5% of the very bad simula-

tions (Abbaspour et al., 2007b). This uncertainty can be graphically represented as a band, where the thickness varies according to the number of parameters as inputs in the calibration process, and their calibration ranges.

Associated to the 95PPU, two criteria are calculated by SWAT-CUP: the P-factor, which is the percentage of observed data bracketed by the 95PPU, and the R-factor, which is the average thickness of the 95PPU band divided by the standard deviation of the observed data. The P-factor and R-factor are considered satisfactory when their values are higher than 70% and lower than 1.5 respectively (Abbaspour et al., 2007a; Moriasi et al., 2007). A good calibration must show in first satisfactory R and P-factor, then, a good efficiency (NSE or other objective function). The GR4J performance is assessed based on the performance criteria. Finally, the model behavior throughout the climate shift can also be characterized by the stability of its parameters between the two calibrations. Strong changes between parameters values (i.e. a low stability of parameters) indicate a strong dependency on the climate characteristics of the calibration period.



**Figure 2.** Monthly performance (NSE criteria) of a) SWAT model; b) GR4J model, on the selected watersheds.



### 3. Results

#### 3.1 Identification of a climate shift in inputs and outputs data

Input climate data series have been divided between two sub-periods: the P1 period from 1980-01-01 to 1987-12-31, and P2 period from 1988-01-01 to 1995-12-31. Mean minimal and maximal temperature values calculated on the two sub-periods show significant (t-test) differences (table 3), with a difference about  $0.9^{\circ}\text{C}$  for both minimal and maximal temperatures. These values are very close to those described over France (Brulebois et al., 2015b). However, no significant differences can be observed for the other climate variables.

In response to these changes in temperature, an impact in streamflow is expected. Indeed, annual observed anomaly streamflow (figure 3) is about -90 mm, and except in September and November (which show few variations), all the months show decrease in streamflow, from -10% in September to 50% (July). In comparison to observation, anomalies simulated by GR4J and SWAT are fewer. Anomalies are quite similar between the two models: a decrease of about 50 mm/year. This decrease occurs during 7 months: December, January, and from April to August, and to a lesser extent, in February, while March, September and October show few changes, and November shows a significant increase of about 20%.

#### 3.2 Cross calibration-validation of models

SWAT monthly performances (Table 4 and Figure 4) are very close between each modality (NSE from 0.72 to 0.92), while GR4J performances are more unequal (NSE from 0.27 to 0.97). In C1V1 and C1V2, sometimes SWAT is better, sometimes GR4J is. In C2V1, SWAT is systematically better than GR4J, and in C2V2, GR4J is better. The two models do not show similar behavior in calibration: the best calibration performances are obtained in C1V1 modality for SWAT and C2V2 for GR4J, and the worst validation performances are obtained in C1V2 modality for SWAT and C2V1 for GR4J.

Obviously, GR4J calibration permits to be more adapted than SWAT to the climate characteristics of the calibration period (see performance in C2V2), but in this case, the calibration is less robust across other validation period (see performance in C2V1), while SWAT calibration is relatively robust, since the monthly performance differences are very

low between calibration and validation. Moreover, at monthly scale, on the eight watersheds, the mean P-factor reached 73% in C1 and 72% in C2, and the mean R-factor reached 0.73 in C1 and 0.77 in C2. From this point of view, and with monthly NSE higher than 0.80, the SWAT calibrations can be judged good.

Regarding performances for each watershed, the St. Martin/Nohain watershed shows the lowest NSE values and the strongest differences in performance between calibration and validation period for both GR4J and SWAT models. The performance decrease reaches 0.11 for the SWAT model, while it reaches 0.64 for the GR4J model. All the other watersheds show robust performances between calibration and validation for the SWAT model (performances decrease  $<0.1$ ). Conversely, for GR4J model, all watersheds show low robustness, with a decrease performance greater than 0.1, except for the St. Usage watershed (Table 4).

#### 3.3 Streamflow reproduction errors

For each modality, errors between observations and simulations (in percentage) averaged on all watersheds are systematically lower for SWAT simulations than for GR4J simulations, and show a similar pattern: C1V1 modality shows the lower error, then, by increasing order, C2V2, C2V1 and C1V2. Errors are however included in the same order of magnitude (from 4.3 to 11.6% for SWAT, and from 5.5 to 17.4% for GR4J).

Regarding each watershed, errors in C1V1 are lower than these in C1V2 for both SWAT and GR4J models, but this is not the case between C2V2 and C2V1. Streamflow errors are not directly correlated with performance differences. We can see low or no differences in model performance between calibration and validation (SWAT performance on Arceau watershed in C1V2) associated to high streamflow errors (17.9%), and conversely, strong differences in model performance between calibration and validation (GR4J performance on Rigny/Arroux watershed in C2V1), associated to low streamflow errors (-1.7%).

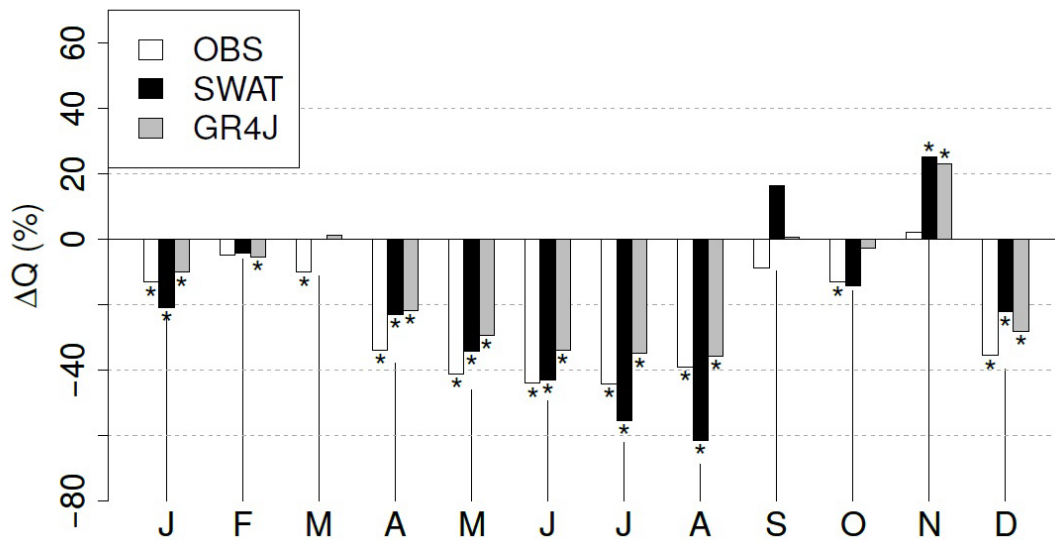
#### 3.4 Stability of parameters and induced uncertainty

The ALPHA\_BE, RCHRG\_DP and GW\_DELAY parameters values remain stable between the 2 sub-periods and show strong and significant correlation between the two calibrations:  $R=0.94$ ,  $0.94$  and  $0.87$  respectively. The GW\_QMIN parameter is much less stable ( $R=0.45$ ).

	P1	P2	$\Delta$	%	1980-2010
Tmin (°C)	5.2	6.1	+0.9*	+17.3	5.8
Tmax(°C)	13.3	14.2	+0.9*	+6.8	13.8
P (mm/an)	952	874	-78	-7.4	948
PET (mm/an)	684	704	+20	+3.3	686
Relative humidity (%)	82	81	-1	-1.2	81
Solar radiation (MJ/m <sup>2</sup> /an)	4020	4133	+113	+2.8	4255
Wind (m/s)	2.8	2.8	-0.02	-0.7	2.8

Significance (stars) is based on t-test at 5% of uncertainty. P1: 1980-1987, P2: 1988-1995, P total: 1980-1995

**Table 3.** Mean values of each climate parameters during sub-periods.



**Figure 3.** Monthly streamflow anomalies (%) of the 8 outlets between the 2 subperiods, simulated and observed. Significance (stars) is based on t-test at 5% uncertainty.

The ALPHA\_BF values show few or no variations between the two calibrations, except for two watersheds (Figure 5a). The GW\_DELAY shows an increase for three watersheds but no changes for the others. The QMIN parameter shows an increase for 5 watersheds and a decrease for St. Martin/Nohain and Chablis only. Finally, RCHRG\_DP shows a slight increase for 4 watersheds and no changes for the others. All of GR4J parameters are stable between calibration, with a significant correlation coefficient significant higher

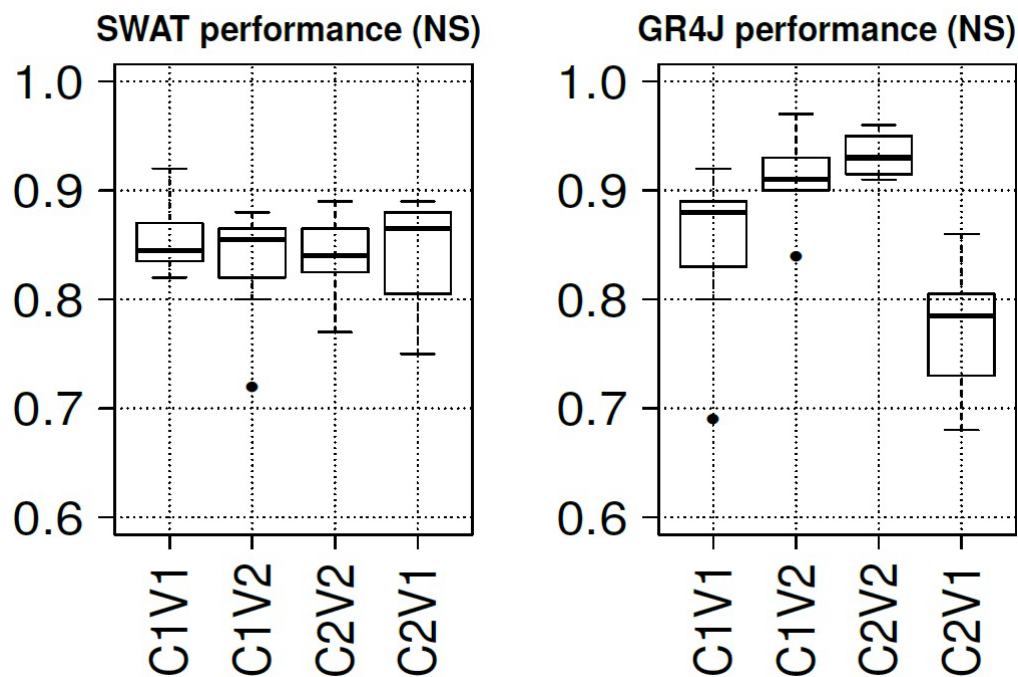
than 0.75 (Figure 5b). Except for St. Martin/Nohain and Chablis watersheds, changes are slight between the two calibrations. The GR4J parameter values show quite homogenous changes between calibrations: decreases in X2 parameter, except for 2 watersheds, no changes or slight decreases in X3 parameter, few variations in X4 parameter, and very slight increases in X1 parameter, except for the Nohain watershed.

The parameters values fixed during each calibration have been set as inputs in a new SWAT-CUP

Watersheds	SWAT MODEL				GR4J MODEL			
	NS C1V1	NS C1V2	NS C2V2	NS C2V1	NS C1V1	NS C1V2	NS C2V2	NSC2V1
Chablis	0.87	0.84	0.85	0.88	0.89	0.92	0.95	0.78
Quincy-le-Vicomte	0.84	0.88	0.88	0.86	0.88	0.92	0.96	0.79
Arceau	0.87	0.86	0.84	0.88	0.89	0.94	0.94	0.82
St-Martin/N.	0.83	0.72	0.77	0.75	0.69	0.84	0.91	0.27
Poiseux	0.85	0.80	0.81	0.87	0.88	0.97	0.92	0.79
St-Usuge	0.92	0.87	0.89	0.89	0.92	0.90	0.95	0.86
Rigny/Arroux	0.82	0.86	0.84	0.76	0.86	0.90	0.91	0.78
Vitry-en-Charollais	0.84	0.85	0.84	0.85	0.80	0.90	0.92	0.68
Mean	0.86	0.83	0.84	0.84	0.85	0.90	0.93	0.72

*c1: Calibration 1980-1987/v1: Validation 1980-1987/c2: Calibration 1988-1995/v2: Validation 1988-1995*

**Table 4.** SWAT and GR4J monthly performances (NASH coefficient) on calibration and validation



**Figure 4.** SWAT (left) and GR4J (right) performances (Nash Efficiency) of the watersheds for the four modalities

run, to obtain the 95PPU induced by the parameters changes. This corresponds to an estimation of the uncertainty due to climate characteristics of the calibration period. At monthly scale, the R-factor averaged over all watersheds reaches only 0.1, which is much lower than that obtained during calibration

processes. The two watersheds shown (Arceau and Nohain) correspond to extreme watershed behavior throughout the climate shift: the Arceau watershed shows very slight variations of its parameters fixed values between the two calibrations while St-Martin/Nohain watershed is the one with the strongest param-



	SWAT MODEL				GR4J MODEL			
	C1V1	C1V2	C2V1	C2V2	C1V1	C1V2	C2V1	C2V2
Chablis	5.4	18.1	-6.0	5.6	1.9	23.2	-12.2	9.3
Quincy-le-Vicomte	5.7	10.6	3.7	9.2	7.7	22.5	-8.2	5.5
Arceau	10.8	17.9	10.6	18.1	-1.2	10.8	-4.0	10.9
St-Martin/Nohain	-0.7	16.7	-11.8	4.1	-7.9	14.2	-30.4	-6.3
Poiseux	0.7	8.5	-15.3	-10.6	4.6	18.8	-9.1	6.6
St-Usuge	-3.1	12.2	-5.3	3.3	8.3	25.3	-7.3	8.5
Rigny/Arroux	-7.4	8.5	7.3	7.9	6.9	19.9	-1.7	10.9
Vitry-en-Charollais	-0.4	0.7	0	0.2	-5.3	4.5	-7.2	5.7
Mean	4.3	11.6	7.5	7.4	5.5	17.4	10.0	7.9

*Means are calculated from absolute values.*

**Table 5.** Errors (in percentage) between observed and simulated interannual module. Means are calculated from absolute values.

eter changes (Figure 6). Therefore, the R-factors calculated on these two watersheds (based on the 95PPU obtained in Figure 6) are quite different: it equal to 0.03 for Arceau, and reaches 0.20 for St. Martin/Nohain.

Nevertheless, the thickness of the 95PPU band obtained from the parameters values fixed on the two calibrations period remains very slight, even for watersheds showing the strongest changes in its parameter values (Figure 5a).

#### 4. Discussion

The behavior of SWAT and GR4J model throughout the climatic shift shows both similarities and differences. Concerning the performance decrease between calibration and validation, the two models are opposite. The low decrease of SWAT performance between calibration and validation provided us the proof of the ability of SWAT model to simulate correctly streamflow throughout a climatic shift (table 4). For GR4J performance, however, strong decreases have been observed over some watersheds (Vitry-en-C. or Rigny/Arroux for example), but these decreases are associated to low variation in parameters values (Table 4 and Figure 6). This fact indicates that the better adaptation of GR4J model on the second calibration period is not associated with strong changes in parameters values. This stability of parameters (although some differences,

especially for X2 parameter), already highlighted (Brigode et al., 2013), means, in agreement with Le Lay (2007), that changes in parameter values are not always a good indicator of changes in watershed behavior.

Errors between simulated and observed streamflow showed similar patterns between SWAT and GR4J (Table 5). Error values are systematically higher for C1V2 than for C1V1, showing that models calibrated during period 1 are adapted to a wetter climate. When models calibrated on P1 are applied on P2, simulated stream flows are over-estimated compared to the observed ones. Conversely, models calibrated on P2 show stream flows more underestimated in validation on P1 than in validation on P2, showing that models are adapted to a drier climate. This fact is consistent with the changes in both SWAT and GR4J parameters values.

Indeed, they mainly consist in an increasing of GW\_DELAY, GW\_QMN and RCHRG\_DP for SWAT parameters, and a decrease of X2 and a slight increase of X1 for GR4J parameters. These changes correspond to an adaptation of the model to a drier period: they allow water to meet more easily soil and plant water demand: with an increase in store capacity (increase of X1, GW\_QMN and GW\_DELAY), and to be exported out of the system (by a decrease of X2 or an increase of RCHRG\_DP).

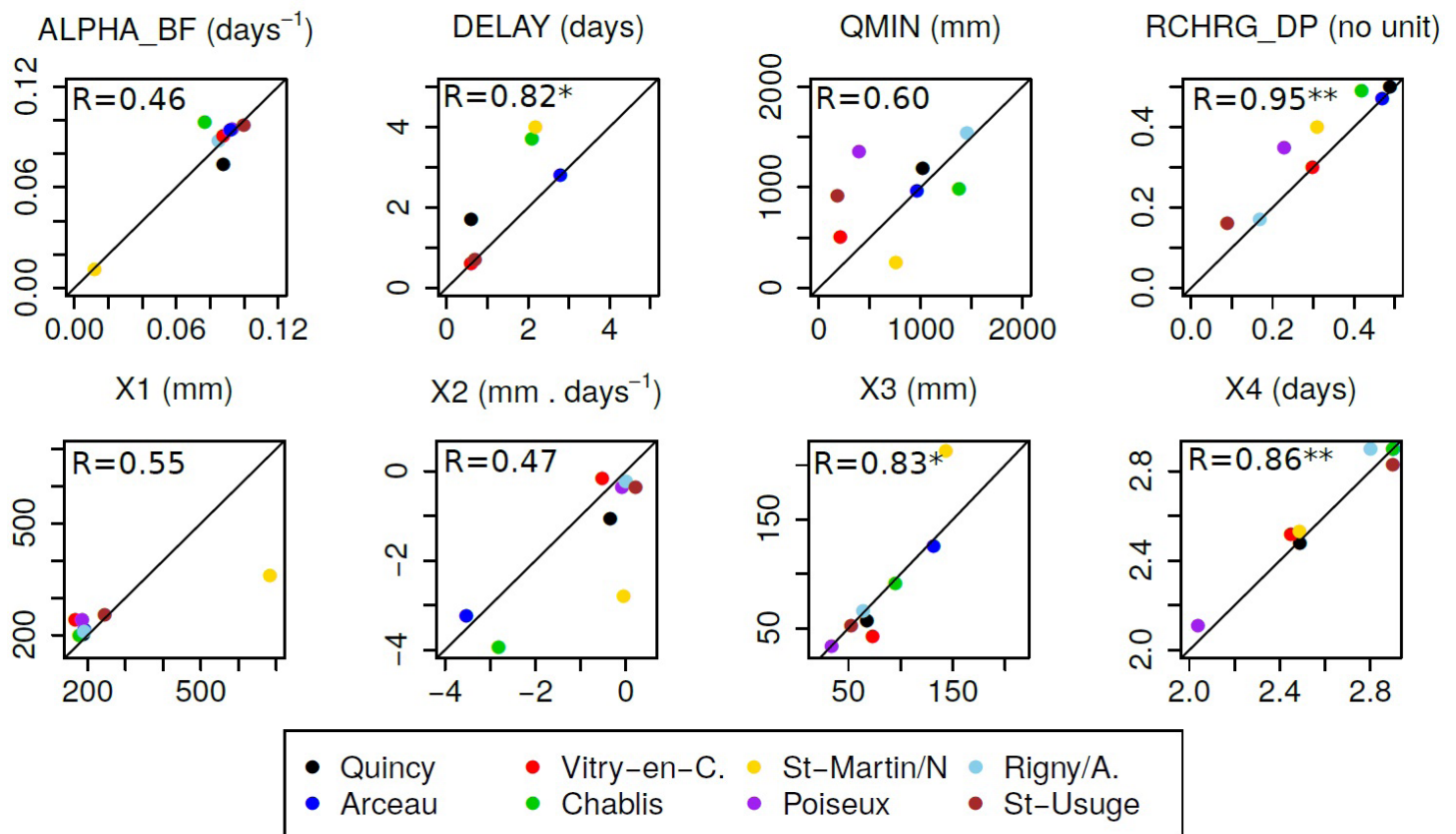
However, for some watersheds, these recharge parameters (both RCHRG\_DP and X2) are close between the two calibrations, or even change in the

other way (Vitry-en-C., Rigny/Arroux, Arceau). These watersheds are also those with the lowest differences between C1V2 and C2V1 streamflow errors. On the other hand, St-Martin/Nohain and Chablis watersheds, which show strong differences for both SWAT and GR4J recharge parameters, have the highest differences in streamflow errors between C1V2 and C2V1.

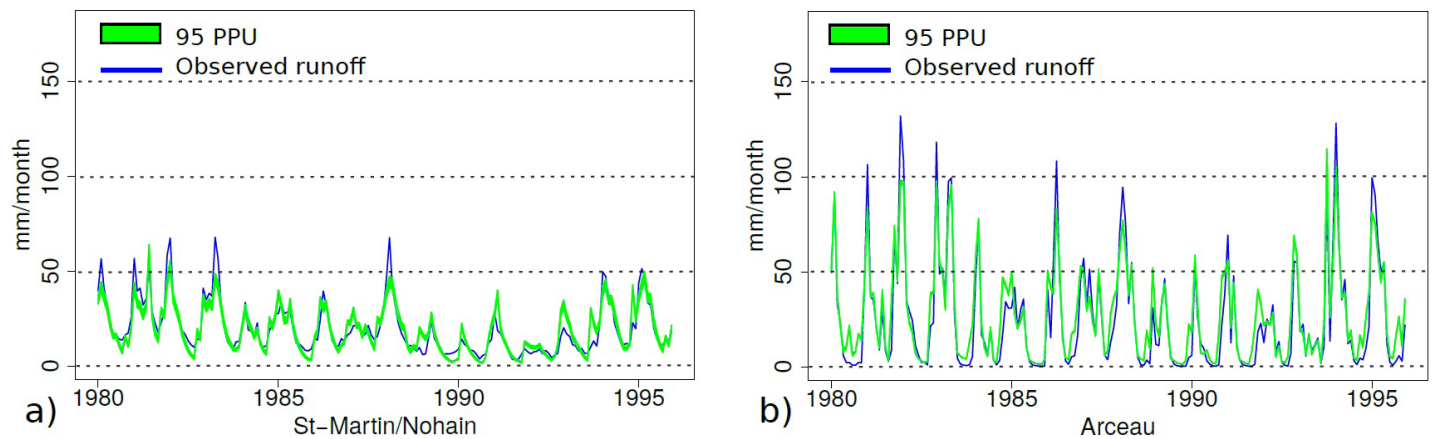
This fact leads us to think that when the recharge parameters are used to adapt the model to the climate characteristics of the calibration period, the model is less robust. The question is why some watersheds have differences in their recharge parameters, while other watersheds keep their parameters stable between the two calibrations. The answer is maybe in the way the climate shift is taken into account in the model. The GR4J model uses directly potential evapotranspiration values from ERA\_INTERIM spatial disaggregation; and we can assume that the PET is correctly reproduced by SWAT model: mean PET values calculated on the 1980-1987 period is 688 mm, which is close to the value from ERA\_INTERIM (Table 3).

Another possibility is the bad reproduction of ET (effective evapotranspiration). The ET simulated by SWAT on the 1980-1987 period is 486 mm, so about 70% of the PET, what we think is a credible value.

Here, we argue that the parametrisation during calibration process is the origin of the mistake. Instead of modify store capacities (which allow more water to meet soil or plant demand), calibration processes result in changes in recharge parameters. From our point of view, these changes are not the good solution for the model to be adapted at contrasted climate periods. The integration of another parameter in the calibration process (linked with evapotranspiration) could improve the cross calibration/validation in climate-contrasted periods. This problem highlights the fact that the automatic calibration process cannot replace the expertise of the user concerning the choice of parameter to be changed or not.



**Figure 5.** Correlation of a) SWAT and b) GR4J calibrated parameter values between the 2 calibrations. Stars show significance.



**Figure 6.** Monthly observed streamflow and 95PPU from uncertainty analysis a) Nohain at St. Martin/Nohain, b) Tille at Arceau

## 5. Conclusion and perspectives

The existence of an observed shift in air temperature over France in 1987/88 (Brulebois et al., 2015b) allowed us to test the robustness of two hydrological models throughout this shift. The aim of this study is the assessment of the ability of both SWAT and GR4J models to simulate observed discharge during post-shift period, when the model has been calibrated before the shift, and conversely. Such assessment is an essential step in a prospective study on climate change impacts (Thirel et al., 2015a).

First, both models (GR4J and SWAT) were able to reproduce correctly streamflow of the 8 selected watersheds during the reference period (1980–2010), with P-factor equal to 0.74, R-factor equal to 1.02, and NSE equal to 0.83 at monthly scale for SWAT simulations, and NSE equal to 0.91 for GR4J simulations.

Regarding to models robustness throughout contrasted climate periods, performance decreases observed between calibration and validation showed that GR4J model can be more efficient in calibration, but also less robust during validation. Conversely, SWAT showed homogenous performance and lower errors in streamflow simulations for each modality tested (C1V1, C1V2, C2V2, C2V1). The integration of more parameters in calibration could improve the efficiency in calibration but also reduce robustness.

Both models showed a good stability of their parameters between the two calibrations, especially on GR4J parameters (correlation coefficients are higher than those on SWAT parameters).

Despite this stability, some changes have been observed in parameters value between the two calibrations. The changes in recharge parameters (RCHRG\_DP and X2) characterize an adaptation to a drier calibration period, but could be a “maladaptation” of the model in a climate change context.

Finally, the uncertainty induced by these changes remains slight; the watershed with the strongest changes (Nohain at St-Martin/Nohain) showed a very thin band of uncertainty (based on the 95PPU analysis).

These results let us conclude to the validity of model parameters throughout contrasted climate periods. Despite a lower robustness for GR4J model than for SWAT, it appears to be reliable in climate change context. But it does not eliminate the need to analyze jointly the SWAT and GR4J results in order to be more confident in the simulations with a specific focus on soil water content and evaporation transpiration calculation.

## References

- Abbaspour, K.C., Yang, J., Maximov, I., Siber, R., Bogner, K., Mieleitner, J., Zobrist, J., and Srinivasan, R. (2007b). Modelling hydrology and water quality in the pre-alpine/alpine Thur watershed using SWAT. *J. Hydrol.* 333, 413–430.
- Andrews, F. (2011). Hydromad Tutorial.
- Arnell, N.W. (1999). The effect of climate change on hydrological regimes in Europe: a continental perspective. *Glob. Environ. Change* 9, 5–23.
- Arnold, J., Moriasi, D.N., Gassman, P.W., Abbaspour, K.C., White, M.J., Srinivasan, R., Santhi, C., Harmel, R.D., Griensven, A., Van Liew, M.W., et al. (2012). SWAT: Model Use, Calibration, and Validation. *Trans. ASABE* 55, 1491–1508.

- Arnold, J.G., Srinivasan, R., Muttiah, R.S., and Williams, J.R. (1998). Large Area Hydrologic Modeling and Assessment Part I: Model Development I. *JAWRA J. Am. Water Resour. Assoc.* 34, 73–89.
- Bates, B.C., Kundzewicz, Z.W., Wu, S., and Palutikof, J.P. (2008). Le changement climatique et l'eau, document technique publié par le Groupe d'experts intergouvernemental sur l'évolution du climat, Secrétariat du GIEC, Genève (GIEC).
- Boé, J. (2007). Changement global et cycle hydrologique: Une étude de régionalisation sur la France. phd. Université de Toulouse, Université Toulouse III - Paul Sabatier.
- Boé, J., Terray, L., Habets, F., and Martin, E. (2007). Statistical and dynamical downscaling of the Seine basin climate for hydro-meteorological studies. *Int. J. Climatol.* 27, 1643–1655.
- Boorman, D.B. (2003). Climate, Hydrochemistry and Economics of Surface-water Systems (CHESS): adding a European dimension to the catchment modelling experience developed under LOIS. *Sci. Total Environ.* 314–316, 411–437.
- Boulard, D., Castel, T., Camberlin, P., Sergeant, A.-S., Bréda, N., Badeau, V., Rossi, A., and Pohl, B. (2015). Capability of a regional climate model to simulate climate variables requested for water balance computation: a case study over northeastern France. *Clim. Dyn.* 1–28.
- Brigode, P., Oudin, L., and Perrin, C. (2013). Hydrological model parameter instability: A source of additional uncertainty in estimating the hydrological impacts of climate change? *J. Hydrol.* 476, 410–425.
- Brulebois, E., Rossi, A., Le Moine, N., Philippe, M., Castel, T., Richard, Y., and Amiotte-suchet, P. (2014). Potentialités d'une chaîne hydroclimatique à l'échelle des bassins versants bourguignons, XXVIIème colloque de l'Association Internationale de Climatologie. (Dijon, France), pp. 23–29.
- Brulebois, E., Ubertosi, M., Bachmann, J., Rossi, A., Castel, T., Richard, Y., Sauvage, S., Sanchez Perez, J.-M., and Amiotte-Suchet, P. (2015a). Sensitivity of water quality of three contrasted north-eastern French watersheds to climate change (2006–2100) using SWAT model. *International SWAT conference.* (Pula, Sardinia, Italy), p.
- Brulebois, E., Castel, T., Richard, Y., Chateau-Smith, C., and Amiotte-Suchet, P. (2015b). Hydrological response to an abrupt shift in surface air temperature over France in 1987/88. *J. Hydrol.* 531, 892–901.
- Castel, T., Richard, Y., Pohl, B., Crétat, J., Thévenin, D., Cuccia, C., Bois, B., and Roucou, P. (2010). Assessment of Dynamic Downscaling of the Continental East French Regional Climate at high-resolution using the ARW/WRF model. *Assoc. Int. Climatol.* 23 107–112.
- Castel, T., Lecomte, C., Richard, Y., Lejeune-Hénaut, I., and Larmure, A. (2014). Does global warming reduce the freezing injury risk to temperate climate crops ? (DIJON), pp. 271–277.
- Chabin, J.-P. (2001). La forêt dans tous ses états: de la préhistoire à nos jours: actes du colloque de l'Association interuniversitaire de l'Est, Dijon, 16-17 novembre 2001 (Besançon: Presses universitaires de Franche-Comté).
- Cornelissen, T., Diekkrüger, B., and Giertz, S. (2013). A comparison of hydrological models for assessing the impact of land use and climate change on discharge in a tropical catchment. *J. Hydrol.* 498, 221–236.
- Coron, L., Andréassian, V., Bourqui, M., Perrin, C., and Hendrickx, F. (2011). Pathologies of hydrological models used in changing climatic conditions: a review. In S.W. Franks, et Al., Eds., (344: IAHS Publ.), pp. 39–44.
- Cuccia, C. (2008). Changement climatique en Bourgogne depuis 1961 : Etude des variations de températures et de précipitations. Mémoire pour l'obtention du M2 Géobiosphère. Université de Bourgogne.
- Dai, A., Qian, T., Trenberth, K.E., and Milliman, J.D. (2009). Changes in Continental Freshwater Discharge from 1948 to 2004. *J. Clim.* 22, 2773–2792.
- Ducharne, A. (2008). Importance of stream temperature to climate change impact on water quality. *Hydrol Earth Syst Sci* 12, 797–810.
- Ducharne, A., Baubion, C., Beaudoin, N., Benoit, M., Billen, G., Brisson, N., and Garnier J. Kieken H. Lebonvallet S. Ledoux E. Mary B. Mignolet C. Poux X. Sauboua E. Schott C. Théry S. Viennot P. (2007). Long term prospective of the Seine River system: Confronting climatic and direct anthropogenic changes. *Sci. Total Environ.* 375, 292–311.
- Ducharne, A., Thiéry, D., Sauquet, E., and Bustillo, V. (2010). ICC-HYDROQUAL (CEMAGREF Lyon).
- Etchevers, P., Golaz, C., Habets, F., and Noilhan, J. (2002). Impact of a climate change on the Rhone river catchment hydrology. *J. Geophys. Res. Atmospheres* 107, ACL 6-1.
- Feyen, L., and Dankers, R. (2009). Impact of global warming on streamflow drought in Europe. *J. Geophys. Res.* 114.
- Gassman, P.W., Reyes, M.R., Green, C.H., and Arnold, J.G. (2007). The soil and water assessment tool—Historical development applications, and future research directions. *Trans. Am. Soc. Agric. Biol. Eng.* 50, 1211–1240.
- Gassman, P.W., Sadeghi, A.M., and Srinivasan, R. (2014). Applications of the SWAT Model Special Section: Overview and Insights. *J. Environ. Qual.* 43, 1.
- Gedney, N., Cox, P.M., Betts, R.A., Boucher, O., Huntingford, C., and Stott, P.A. (2006). Detection of a direct carbon dioxide effect in continental river runoff records. *Nature* 439, 835–838.
- Gerten, D., Rost, S., von Bloh, W., and Lucht, W. (2008). Causes of change in 20th century global river discharge. *Geophys. Res. Lett.* 35, L20405.
- van Griensven, A., Meixner, T., Grunwald, S., Bishop, T., Diluzio, M., and Srinivasan, R. (2006). A global sensitivity analysis tool for the parameters of multi-variable catchment models. *J. Hydrol.* 324, 10–23.
- Guse, B., Reusser, D.E., and Fohrer, N. (2014). How to improve the representation of hydrological processes in SWAT for a lowland catchment – temporal analysis of parameter sensitivity and model performance. *Hydrol. Process.* 28, 2651–2670.
- Habets, F., Boé, J., Déqué, M., Ducharne, A., Gascoin, S., Hachour, A., Martin, E., Page, C., Sauquet, E., Terray, L., et al. (2011). Programme PIREN-SEINE Impact du changement climatique sur les ressources en eau du bassin versant de la Seine. Résultats du projet GICC-RExHySS #13 (Agence de l'eau Seine-Normandie).
- Henrichs, T., Lehner, B., and Alcamo, J. (2002). An Integrated Analysis of Changes in Water Stress in Europe — European Environment Agency (EEA).



- Huntington, T.G. (2006). Evidence for intensification of the global water cycle: Review and synthesis. *J. Hydrol.* 319, 83–95.
- INRA (1998). Base de Données Géographiques de Sols de France, version 1.0 du 10/09/1998.
- Jiménez Cisneros, B.E., Oki, T., Arnell, N.W., Benito, G., Cogley, J.G., Döll, P., Jiang, T., and Mwakalila, S.. (2014). Freshwater resources. In: *Climate Change 2014: IMpacts, Adaptation, and Vulnerability. Part A: Global and Sectoral Aspects. Contribution of Working Group II to the Fifth Assessment Report of the Intergovernmental Panel on Climate Change* [Field, C.B., V.R. Barros, D.J. Dokken, K.J. Mach, M.D. Mastrandrea, T.E. Bilir, M. Chatterjee, K.L. Ebi, Y.O. Estrada, R.C. Genova, B. Girma, E.S. Kissel, A.N. Levy, S. MacCracken, P.R. Mastrandrea, and L.L. White (eds.)]. Cambridge University Press, Cambridge, United Kingdom and New York, NY, USA, pp. 229–269.
- Klemes, V. (1986). Operational testing of hydrological simulation models. *Hydrol. Sci. J.* 31, 13–24.
- Kroeze, C., Bouwman, L., and Seitzinger, S. (2012). Modeling global nutrient export from watersheds. *Curr. Opin. Environ. Sustain.* 4, 195–202.
- Laat, A.T.J. de, and Crok, M. (2013). A Late 20th Century European Climate Shift: Fingerprint of Regional Brightening? *Atmospheric Clim. Sci.* 3, 291–300.
- Le Lay, M., Galle, S., Saulnier, G.M., and Braud, I. (2007). Exploring the relationship between hydroclimatic stationarity and rainfall-runoff model parameter stability: A case study in West Africa. *Water Resour. Res.* 43, W07420.
- Legras, O. (2014). Evolution du bilan hydrique à l'échelle de bassins-versants en contexte de changement climatique, mise en place d'une méthodologie. Mémoire pour l'obtention du diplôme d'Ingénieur agronome. (Dijon, France: Agrosup Dijon).
- Lehner, B., Döll, P., Alcamo, J., Henrichs, T., and Kaspar, F. (2006). Estimating the Impact of Global Change on Flood and Drought Risks in Europe: A Continental, Integrated Analysis. *Clim. Change* 75, 273–299.
- Lespinas, F., Ludwig, W., and Heussner, S. (2014). Hydrological and climatic uncertainties associated with modeling the impact of climate change on water resources of small Mediterranean coastal rivers. *J. Hydrol.* 511, 403–422.
- Lévesque, E., Anctil, F., Griensven, A., and Beauchamp, N. (2008). Evaluation of streamflow simulation by SWAT model for two small watersheds under snowmelt and rainfall. *Hydrol. Sci. J.* 53, 961–976.
- Milly, P.C.D., Dunne, K.A., and Vecchia, A.V. (2005). Global pattern of trends in streamflow and water availability in a changing climate. *Nature* 438, 347–350.
- Ministère de l'Ecologie, du Développement Durable et de l'Energie (2012). *Explore2070 Eau et changement climatique, Hydrologie de surface. A1 - Rapport de synthèse.*
- Moriasi, D.N., Arnold, J.G., Van Liew, M.W., Bingner, R.L., Harmel, R.D., and Veith, T.L. (2007). Model evaluation guidelines for systematic quantification of accuracy in watershed simulations. *Transactions of the ASABE* 50, 885–900.
- Nash, S. (1970). River flow forecasting through conceptual models part I ? A discussion of principles. *J. Hydrol.* 10, 282–290.
- Nossent, J. (2012). Sensitivity and uncertainty analysis in view of the parameter estimation of a SWAT model of the River Kleine Nete, Belgium. Vrije Universiteit Brussel.
- Ottlé, C., Etchevers, P., Golaz, C., Habets, F., Noilhan, J., Martin, E., Ledoux, E., Leblois, E., Sauquet, E., Amraoui, N., et al. (2001). Hydro-meteorological modelling of the Rhone basin: general presentation and objectives. *Phys. Chem. Earth Part B Hydrol. Oceans Atmosphere* 26, 443–453.
- Penman, H.L. (1948). Natural Evaporation from open water, bare soil and grass. 120–145.
- Perrin, C. (2007). Modèles hydrologiques du Génie Rural (GR).
- Perrin, C., Michel, C., and Andréassian, V. (2001). Does a large number of parameters enhance model performance? Comparative assessment of common catchment model structures on 429 catchments. *J. Hydrol.* 242, 275–301.
- Perrin, C., Michel, C., and Andréassian, V. (2003). Improvement of a parsimonious model for streamflow simulation. *J. Hydrol.* 279, 275–289.
- Rehana, S., and Mujumdar, P.P. (2012). Climate change induced risk in water quality control problems. *J. Hydrol.* 444–445, 63–77.
- Rossi, A., Castel, T., Richard, Y., Amiotte-suchet, P., Brulebois, E., Ubertosi, M., Brayer, J.-M., Doney, C., and Toussaint, H. (2014). Impact du changement climatique sur l'évolution de la ressource en eau en Bourgogne, France (1980-2100) - Analyse des paramètres hydroclimatiques simulés à haute résolution par un modèle climatique régional. (Dijon, France), pp. 170–175.
- Sauquet, E., Dupeyrat, Hendrickx, and Perrin (2010). *IMAGINE 2030, climat et aménagements de la Garonne : quelles incertitudes sur la ressource en eau en 2030 ?*
- Sellami, H., Benabdallah, S., Jeunesse, I.L., and Vanclooster, M. (2016). Climate models and hydrological parameter uncertainties in climate change impacts on monthly runoff and daily flow duration curve of a Mediterranean catchment. *Hydrol. Sci. J.* 61, 1415–1429.
- Simmons, A., Uppala, S.M., Dee, D.P., and Kobayashi, S. (2006). ERA-Interim : New ECMWF reanalysis products from 1989 onwards. *ECMWF Newsletter* 110, 26–35.
- Skamarock, W., Klemp, J.B., Dudhia, J., Gill, D.O., Barker, D.M., Wang, W., and Powers, J.G.A. (2008). Description of the Advanced Research WRF Version 3. Technical report.
- Son, K.-H., and Kim, J.-K. (2008). Application of Proxy-basin Differential Split-Sampling and Blind-Validation Tests for Evaluating Hydrological Impact of Climate Change Using SWAT. *J. Korea Water Resour. Assoc.* 41, 969–982.
- Thirel, G., Andreassian, V., and Perrin, C. (2015a). On the need to test hydrological models under changing conditions. *Hydrol. Sci. J.-J. Sci. Hydrol.* 60, 1165–1173.
- Thirel, G., Andreassian, V., Perrin, C., Audouy, J.-N., Berthet, L., Edwards, P., Folton, N., Furusho, C., Kuentz, A., Lerat, J., et al. (2015b). Hydrology under change: an evaluation protocol to investigate how hydrological models deal with changing catchments. *Hydrol. Sci. J.-J. Sci. Hydrol.* 60, 1184–1199.
- Tisseuil, C., Vrac, M., Lek, S., and Wade, A.J. (2010). Statistical downscaling of river flows. *J. Hydrol.* 385, 279–291.

- USDA-SCS (1986). Urban Hydrology for Small Watersheds. (US Department of Agriculture-soil Conservation Service (USDA-SCS), USDA, Washington, DC.).
- White, K.L., and Chaubey, I. (2005). Sensitivity Analysis, Calibration, and Validations for a Multisite and Multivariable Swat Model. *JAWRA J. Am. Water Resour. Assoc.* 41, 1077–1089.
- Whitehead, P.G., Wilby, R.L., Battarbee, R.W., Kernan, M., and Wade, A.J. (2009). A review of the potential impacts of climate change on surface water quality. *Hydrol. Sci. J.* 54, 101–123.
- Xu, Y., Castel, T., Richard, Y., Cuccia, C., and Bois, B. (2012). Burgundy regional climate change and its potential impact on grapevines. *Clim. Dyn.* 39, 1613–1626.
- Zhang, D., Chen, X., Yao, H., and Lin, B. (2015). Improved calibration scheme of SWAT by separating wet and dry seasons. *Ecol. Model.* 301, 54–61.
- Zhang, H., Huang, G.H., Wang, D., and Zhang, X. (2011). Multi-period calibration of a semi-distributed hydrological model based on hydroclimatic clustering. *Adv. Water Resour.* 34, 1292–1303.