


Fine-tuning cellular levels of DprA ensures transformant fitness in the human pathogen *Streptococcus pneumoniae*

Calum Johnston, ^{1,2*} Isabelle Mortier-Barriere,^{1,2}
Vanessa Khemici,^{1,2,3} and Patrice Polard,^{1,2*}

¹Laboratoire de Microbiologie et Génétique Moléculaires (LMGM), UMR5100, Centre de Biologie Intégrative (CBI), Centre National de la Recherche Scientifique (CNRS), Toulouse, France.

²Université de Toulouse, Université Paul Sabatier, Toulouse, France.

³Department of Microbiology and Molecular Medicine, CMU, Faculty of Medicine, University of Geneva, Geneva, Switzerland.

Summary

Natural genetic transformation is a widespread mechanism of horizontal gene transfer. It involves the internalization of exogenous DNA as single strands and chromosomal integration via homologous recombination, promoting acquisition of new genetic traits. Transformation occurs during a distinct physiological state called competence. In *Streptococcus pneumoniae*, competence is controlled by ComDE, a two-component system induced by an exported peptide pheromone. DprA is universal among transformable species, strongly induced during pneumococcal competence, and crucial for pneumococcal transformation. Pneumococcal DprA plays three crucial roles in transformation and competence. Firstly, DprA protects internalized DNA from degradation. Secondly, DprA loads the homologous recombinase RecA onto transforming DNA to promote transformation. Finally, DprA interacts with the response regulator ComE to shut-off competence. Here, we explored the effect of altering the cellular levels of DprA on these three roles. High cellular levels of DprA were not required for the primary role of DprA as a transformation-dedicated recombinase loader or for protection of transforming DNA. In contrast, full expression of *dprA* was

required for optimal competence shut-off and transformant fitness. High cellular levels of DprA thus ensure the fitness of pneumococcal transformants by mediating competence shut-off. This promotes survival and propagation of transformants, maximizing pneumococcal adaptive potential.

Introduction

Natural genetic transformation is a mechanism of horizontal gene transfer that is widespread in the bacterial kingdom (Johnston *et al.*, 2014). This process, entirely encoded by the recipient cell, involves the capture and internalization of exogenous DNA in single strand form (ssDNA), followed by integration into the recipient chromosome by homologous recombination (Johnston *et al.*, 2014). Transformation thus allows acquisition of new genetic traits and promotes the spread of antibiotic resistance and vaccine escape (Croucher *et al.*, 2011). In the human pathogen *Streptococcus pneumoniae* (the pneumococcus), transformation occurs during a short window called competence, which occurs during early exponential growth (Claverys and Havarstein, 2002). Pneumococcal competence is a transient physiological state during which over 100 genes are specifically expressed (Dagkessamanskaia *et al.*, 2004; Peterson *et al.*, 2004). Around 20 of these are involved in transformation (Claverys *et al.*, 2006), with the products of these genes collectively defined as the transformosome (Claverys *et al.*, 2009).

In *S. pneumoniae*, the transformation process begins with the transformation pilus (Laurenceau *et al.*, 2013; 2015), encoded by the *comG* operon (Bergé *et al.*, 2002; Claverys and Martin, 2003), which captures exogenous DNA (Laurenceau *et al.*, 2013). This DNA is then accessed by the DNA receptor ComEA, and the endonuclease EndA, which degrades one strand (Lacks and Neuberger, 1975; Lacks *et al.*, 1974), allowing the remaining strand to be internalized through the ComEC transformation pore, mediated by the ATP-dependent DNA translocase ComFA (Diallo *et al.*, 2017). Upon internalization, transforming ssDNA initially interacts with three

Accepted 26 June 2018. *For correspondence. E-mail johnston@biotoul.fr; polard@biotoul.fr; Tel. +33 5 61 33 59 38; Fax +33 5 61 33 59 86.

transformasome proteins, DprA, RecA, and SsbB. The transformation-dedicated recombination mediator protein (RMP) DprA can bind to ssDNA and load the homologous recombinase RecA to promote homologous recombination (I. Mortier-Barrière *et al.*, 2007; Quevillon-Cheruel *et al.*, 2012). Both DprA and RecA protect transforming ssDNA from degradation (Bergé *et al.*, 2003). Once RecA is loaded onto ssDNA, it polymerizes and promotes chromosomal integration by homologous recombination. Interestingly, DprA is produced at high levels, with over 8000 molecules present in each competent cell (Mirouze *et al.*, 2013). This is in stark contrast to expression levels of other RMPs such as RecFOR and RecBCD, with less than 100 molecules generally thought to be present per cell (Li *et al.*, 2014). Transforming ssDNA can also be coated with the transformation-dedicated single-stranded DNA-binding protein SsbB (Morrison *et al.*, 2007), which generates a reservoir of DNA for transformation, facilitating multiple transformation events (Attaiech *et al.*, 2011).

Competence is a transient phenotype and uncontrolled induction was observed to strongly impact pneumococcal growth in *in vitro* planktonic culture (Mirouze *et al.*, 2013). Induction and shut-off of competence are thus tightly regulated. Firstly, induction is controlled by an autocatalytic feedback loop involving the genes *comABCDE*. The *comC* gene encodes the peptide pheromone CSP (Competence Stimulating Peptide), which is exported and matured by the dedicated ComAB ABC transporter (Hui *et al.*, 1995). Outside the cell, CSP induces phosphorylation of the membrane-bound histidine kinase ComD, which in turn phosphorylates the intracellular response regulator ComE. ComE~P induces the expression of the *comAB* and *comCDE* operons, generating an autocatalytic feedback loop, as well as other 'early' competence (*com*) genes. The early *com* genes *comX1* and *comX2* encode for an alternative sigma factor (σ^X), which induces the 'late' *com* genes, including those of the transformasome (Claverys *et al.*, 2009; Lee and Morrison, 1999). Secondly, competence shut-off is mediated by DprA, which interacts strongly with ComE~P to either sequester or dephosphorylate it, promoting the shut-off of competence (Mirouze *et al.*, 2013). Inactivation of *dprA* was shown to be highly detrimental for development of pneumococcal infection, dependent on the ability of cells to develop competence (Zhu *et al.*, 2015). This is probably linked to the large growth defect observed in competent *dprA*⁻ cells grown *in vitro*, which is due to uncontrolled competence induction (Mirouze *et al.*, 2013). Thus, DprA plays key roles in transformation and competence (Fig. 1A), and the DprA-mediated shut-off of pneumococcal competence is key for fitness. This study aimed to investigate how these two key activities are balanced in pneumococcal cells.

Pneumococcal DprA is made up of two domains (Fig. 1B), an N-terminal sterile alpha motif (SAM) domain and

a C-terminal extended Rossman fold (eRF) (Quevillon-Cheruel *et al.*, 2012). The interaction of DprA with its partner proteins involves distinct domains, with interaction with ComE~P occurring via the SAM domain (Mirouze *et al.*, 2013) and dimerization and interaction with RecA involving the eRF (Quevillon-Cheruel *et al.*, 2012). DprA is conserved among all transformable species (Johnston *et al.*, 2014), and absence of pneumococcal DprA results in almost complete loss of transformation (Bergé *et al.*, 2003). In *Bacillus subtilis*, DprA also loads RecA onto transforming ssDNA (Yadav *et al.*, 2013), although inactivation of *dprA* results in a more modest ~50–100-fold loss of transformation efficiency (Yadav *et al.*, 2012). DprA also plays a role in transformation, presumably as a RMP, in *Haemophilus influenzae* (Karudapuram *et al.*, 1995), *Neisseria gonorrhoeae* (Duffin and Barber, 2016), *Neisseria meningitidis* (Hovland *et al.*, 2017) *Campylobacter jejuni* (Takata *et al.*, 2005), and *Helicobacter pylori* (Ando *et al.*, 1999; Smeets *et al.*, 2000). Although the mechanism of transformation remains broadly conserved across transformable bacteria, the regulation of competence is very diverse (Johnston *et al.*, 2014). Since pneumococcal competence shut-off is dependent on interaction between DprA and ComE~P, the role of DprA in competence shut-off may be limited to streptococci which control competence via ComDE (Mirouze *et al.*, 2013).

In this study, we explore the effect of altering the cellular levels of DprA on the roles of DprA in transformation and competence shut-off. By controlling cellular DprA levels using an inducible expression platform, we show that even a ten-fold reduction in cellular DprA barely affects transformation. In contrast, optimal competence shut-off requires full *dprA* expression. The high cellular level of DprA is thus coupled to its distinct role in competence shut-off and as a result may only be conserved among streptococci that control competence via ComDE. In addition, high cellular levels of DprA are crucial for the fitness of pneumococcal transformants. Together, these results directly link high cellular levels of DprA to survival and propagation of pneumococcal transformants, optimizing the adaptive potential of this human pathogen.

Results

Controlling cellular levels of DprA using CEP_{lac}

The aim of this study was to explore the effect of varying the cellular levels of DprA on the roles of this protein in pneumococcal transformation and competence shut-off. In order to achieve this, a platform allowing expression of a desired gene from the P_{lac} promoter (Vagner *et al.*, 1998), induced by isopropyl β -D-1-thiogalactopyranoside (IPTG), was constructed and validated using the *luc*

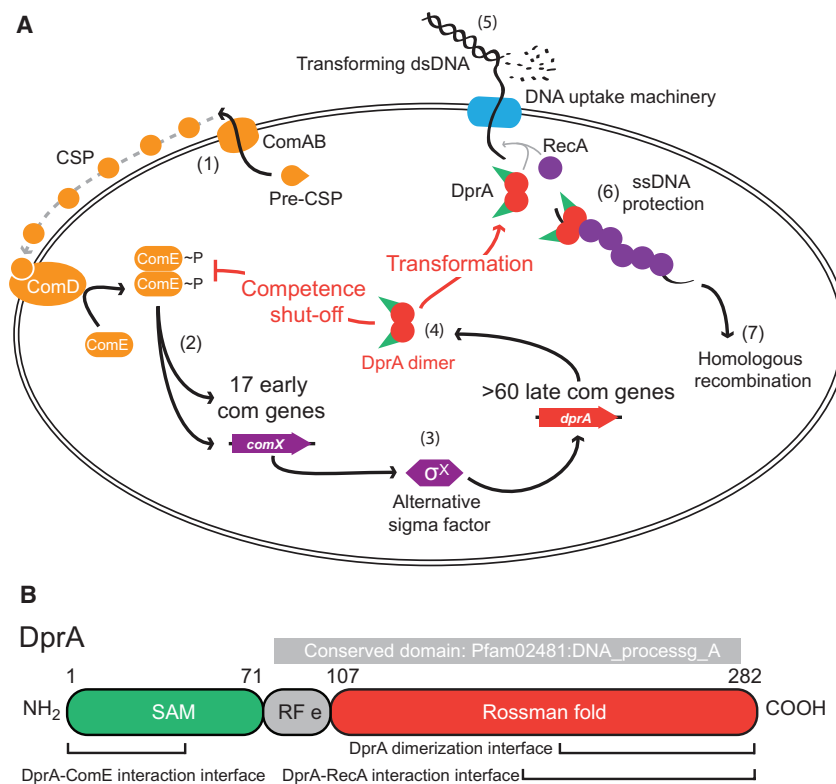


Fig. 1. DprA in competence and transformation.

A. (1) Pre-CSP, encoded by the *comC* gene, is exported and matured by the ComAB transporter, and then interacts with the histidine kinase ComD, stimulating its phosphorylation. (2) ComD-P transphosphorylates the response regulator ComE, which then stimulates the expression of 17 early *com* genes, including two copies of *comX*. (3) These encode an alternative sigma factor σ^X , which induces expression of over 60 late *com* genes including *dprA*. (4) DprA dimers load RecA onto ssDNA to mediate transformation and interact with ComE-P to shut-off competence. (5) Transforming DNA is internalized in single strand form via the DNA uptake machinery. (6) DprA and RecA interact with transforming ssDNA, protecting it from degradation. (7) RecA mediates homologous recombination between transforming ssDNA and the chromosome to promote transformation.

B. Linear representation of DprA with the limits of Pfam02481 (in gray) and structural domains indicated. Interfaces of dimerization and interaction with RecA and ComE are indicated and represent the regions within which the majority of point mutations affecting interaction were identified (Mirouze *et al.*, 2013; Quevillon-Cheruel *et al.*, 2012).

gene (Prudhomme and Claverys, 2007) as described (Fig. S1). To explore the effect of varying cellular DprA levels on its roles in competence shut-off and transformation, the *dprA* gene was placed in the CEP platform (Guiral *et al.*, 2006) controlled by the P_{lac} promoter to generate $CEP_{lac}-dprA$ (Fig. 2A), before inactivation of native *dprA* using a spectinomycin resistance cassette (*dprA::spc^{21C}*, (Mirouze *et al.*, 2013)). Western blots using α -DprA antibodies show that expression levels of *dprA* can be finely tuned by varying IPTG concentration (Fig. 2B). To determine the number of DprA molecules per cell in each IPTG concentration, quantitative Western blots were carried out as previously described (Mirouze *et al.*, 2013). Results show that ~8,250 wild-type DprA molecules are produced per competent cell, in agreement with previous findings (Mirouze *et al.*, 2013), validating our quantifications (Fig. 2C). In contrast, maximal induction of $CEP_{lac}-dprA$ generated ~6,500 DprA molecules per cell, with a decreasing IPTG concentration resulting

in a decreasing number of DprA molecules per cell, with only ~40 molecules observed in absence of IPTG (Fig. 2C). This strain thus provided the opportunity to test how altering cellular concentrations of DprA affects transformation and competence shut-off.

Optimal transformation requires few DprA molecules per competent cell

The conserved role of DprA is as a RMP, to load RecA onto transforming ssDNA during transformation (I. Mortier-Barrière *et al.*, 2007). To investigate whether reducing cellular DprA levels impacted pneumococcal transformation, the transformation efficiency of $CEP_{lac}-dprA$, *dprA*⁻ cells in varying concentrations of IPTG was determined. To achieve this, $CEP_{lac}-dprA$, *dprA*⁻ cells were transformed with either saturating concentrations of genomic DNA possessing a point mutation conferring streptomycin resistance (*rpsL41*), or non-saturating

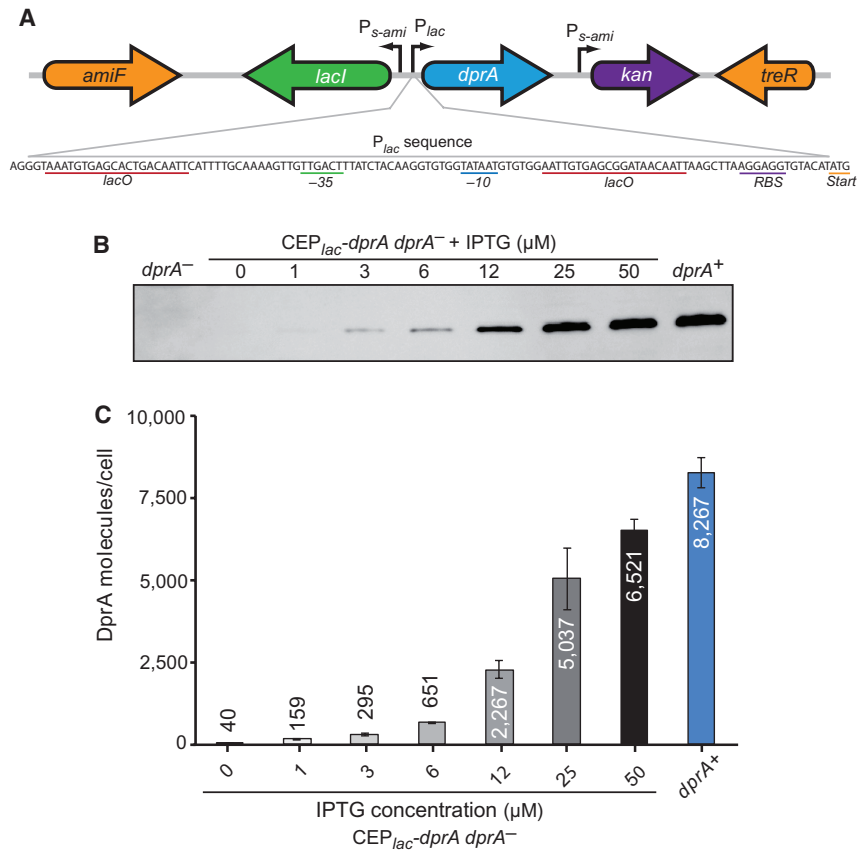


Fig. 2. Quantification of DprA produced from $CEP_{lac-dprA}$.

A. Genetic organization of $CEP_{lac-dprA}$ expression platform. *amiF* and *treR* are pneumococcal genes between which the platform is inserted. The *kan* gene is constitutively expressed via the P_{s-ami} promoter and confers kanamycin resistance. The *lacI* repressor gene is also expressed via a distinct P_{s-ami} promoter. The *dprA* gene is expressed via P_{lac} , the sequence of which is shown. RBS, ribosome-binding site; Start, start codon (ATG).

B. Western blot comparing expression levels of $CEP_{lac-dprA}$ in varying IPTG concentrations to those of wildtype and $dprA^-$ cells.

C. Quantified numbers of DprA molecules produced per competent cell for each concentration of IPTG. Results represent averages of triplicate repeats of Western blots compared to gradients of purified DprA. Strain used: $CEP_{lac-dprA}$, $dprA^-$, R3833. DprA molecules per competent cell and error bars as follows: 0 μ M IPTG, 40 \pm 22; 1 μ M IPTG, 159 \pm 23; 3 μ M IPTG, 295 \pm 25; 6 μ M IPTG, 651 \pm 9; 12 μ M IPTG, 2,267 \pm 271; 25 μ M IPTG, 5,037 \pm 948; 50 μ M IPTG, 6,521 \pm 320; $dprA^+$, 8,267 \pm 451.

concentrations of a PCR fragment possessing the same point mutation, where on average one DNA molecule is present per three competent cells. Growth of pneumococcal cells in IPTG was previously shown to induce very little transcriptional changes (Liu *et al.*, 2017), which ensures that the observed effects due solely to alterations in cellular DprA levels. In saturating DNA concentrations (Fig. 3A), there was no significant difference between transformation efficiencies in presence of 12–50 μ M IPTG (2,250–6,500 DprA molecules per competent cell; Fig. 2C). With 650 DprA molecules per competent cell, there is a modest but significant three-fold drop in transformation efficiency, followed by a rapid linear decline in transformation efficiency below this point. Indeed, in the absence of IPTG, where only ~40 DprA molecules are produced per competent cell, transformation efficiency drops ~240-fold. This remains

above the >4-log drop observed in $dprA^-$ cells (Fig. S2), showing that even 40 molecules of DprA are capable of ensuring transformation. Taken together, these results show that full transformation efficiency is maintained in presence of ~650–2,250 molecules of DprA, but that below this point, the cellular levels of DprA fall below those necessary to stimulate optimal transformation. In non-saturating DNA concentrations, the profile of efficiency was similar, although there was no significant difference between ~6,500 and ~650 molecules of DprA (Fig. 3B). This result shows that even when transforming DNA is limiting, ~300 DprA molecules per cell (3 μ M IPTG) are not sufficient to ensure optimal transformation efficiency. Fold decreases in transformation efficiency taken for each cellular level of DprA compared to the highest expression condition are directly comparable between excess and limiting transforming DNA

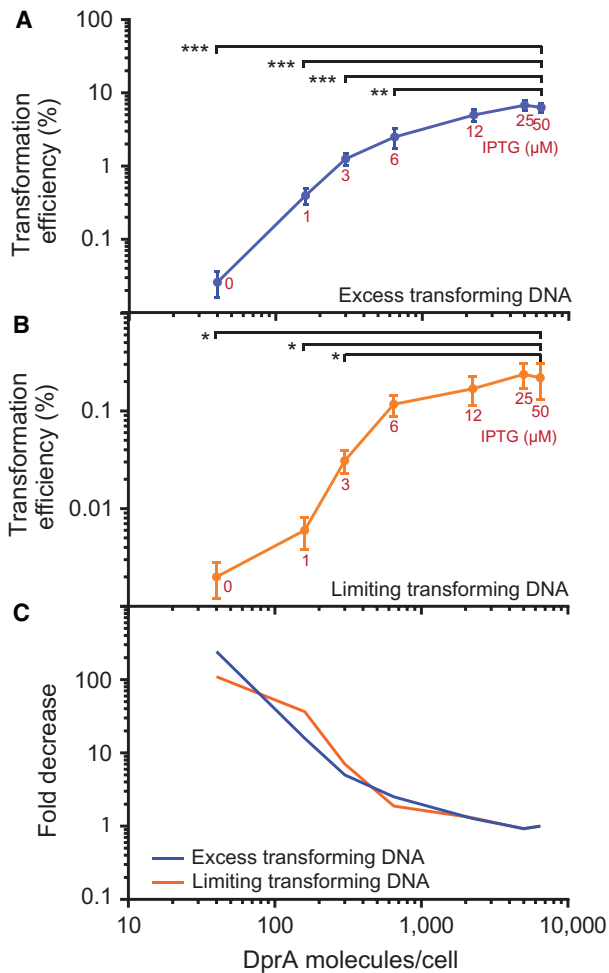


Fig. 3. The effect of varying IPTG concentration on transformation efficiency in $CEP_{lac-dprA}, dprA^{-}$. A. Transformation efficiencies of $CEP_{lac-dprA}, dprA^{-}$ strain in varying IPTG concentrations when transformed with excess transforming DNA. Results represent averages of triplicate repeats. Transformation efficiencies (%) and error bars as follows: 0 μ M IPTG, 0.026 \pm 0.01 %; 1 μ M IPTG, 0.4 \pm 0.1 %; 3 μ M IPTG, 1.25 \pm 0.22 %; 6 μ M IPTG, 2.5 \pm 0.46 %; 12 μ M IPTG, 5 \pm 0.58 %; 25 μ M IPTG, 6.8 \pm 0.69 %; 50 μ M IPTG, 6.3 \pm 0.55 %. **, $p < 0.01$; ***, $p < 0.001$. B. Transformation efficiencies of $CEP_{lac-dprA}, dprA^{-}$ strain in varying IPTG concentrations when transformed with limiting transforming DNA (~1 DNA molecule per 3 competent cells). Results represent averages of triplicate repeats. Values and error bars as follows: 0 μ M IPTG, 0.002 \pm 0.0008 %; 1 μ M IPTG, 0.006 \pm 0.002 %; 3 μ M IPTG, 0.03 \pm 0.008 %; 6 μ M IPTG, 0.12 \pm 0.08 %; 12 μ M IPTG, 0.17 \pm 0.06 %; 25 μ M IPTG, 0.24 \pm 0.07 %; 50 μ M IPTG, 0.22 \pm 0.09 %. *, $p < 0.05$. C. Fold decrease of transformation efficiencies compared to condition with highest expression of DprA (50 μ M IPTG). Blue line, excess DNA; orange line, limiting DNA. Strain used: $CEP_{lac-dprA}, dprA^{-}$, R3833.

conditions (Fig. 3C). This demonstrates that loss of transformation efficiency directly correlates to cellular DprA levels independent of the concentration of transforming DNA present. Taken together, these results show that whether the transforming DNA is in excess or

limiting, between ~650 and ~2,250 molecules of DprA per competent cell are required to ensure maximal transformation efficiency.

DprA-mediated protection of transforming ssDNA correlates with transformation efficiency

DprA plays two roles that directly affect transformation, as a recombination mediator protein and as a protector of transforming ssDNA. Since both DprA and RecA are crucial for protection of transforming ssDNA, it is possible that protection and recombination are one and the same, in that the DprA-mediated loading of RecA onto transforming ssDNA, and subsequent polymerization, itself protects the DNA. To shed light on this, the protection of transforming ssDNA was compared in competent cells expressing varying levels of DprA. To achieve this, competent cells were transformed with radiolabeled PCR fragments and cellular DNA recovered to determine the presence of internalized radio-labeled ssDNA, resolved and visualized by native agarose gel electrophoresis. When comparing wild-type and $dprA^{-}$ cells, a large smear of protected ssDNA was observed in wild-type at both timepoints, while no signal was detected for $dprA^{-}$ cells (Fig. 4A), as previously reported (Attaiech *et al.*, 2008; Bergé *et al.*, 2003), indicating rapid degradation of transforming ssDNA after internalization. For $CEP_{lac-dprA}, dprA^{-}$ cells, 25 μ M IPTG showed ssDNA protection similar to wild-type, followed by a loss of protection correlating with decreasing IPTG concentration (Fig. 4A). Density plots of the ssDNA smears in each lane were generated and the area under each plot (Fig. 4B) allowed quantification of ssDNA protection and showed that below 6 μ M of IPTG (~650 DprA molecules/cell), almost no protection of transforming ssDNA was observed (Fig. 4B), correlating with the rapid loss of transformation efficiency observed in these conditions (Fig. 3A and B). Taken together, these results show a strong correlation between protection of ssDNA and transformation efficiency. This strongly suggests that ssDNA protection mediated by DprA limits transformation efficiency.

Protection of transforming ssDNA depends on DprA-mediated RecA loading on ssDNA

Since transforming ssDNA protection is dependent on not only DprA but also RecA (Bergé *et al.*, 2003), we hypothesized that DprA-mediated RecA-loading protected target ssDNA from degradation. To test this hypothesis, the protection of transforming ssDNA was investigated in a strain possessing a DprA mutant specifically affected for its interaction with RecA (DprA^{Q^NQ}) (Quevillon-Cheruel *et al.*, 2012). In addition, the ability of DprA to dimerize

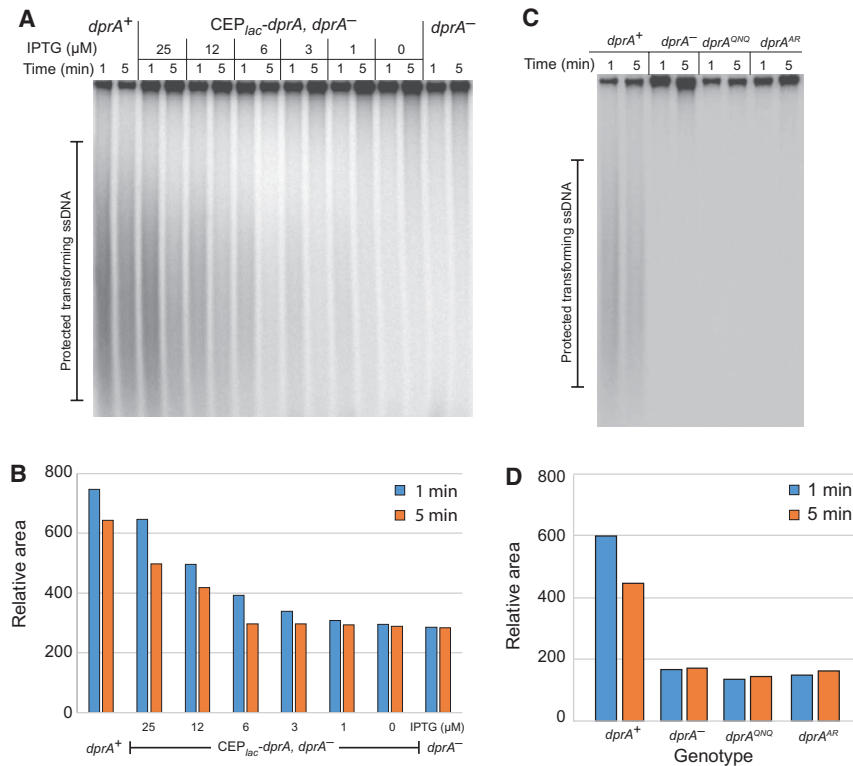


Fig. 4. Investigating the DprA-mediated protection of transforming ssDNA.

A. Electrophoregram of agarose gel of DNA extracted from *dprA*⁺ (R3584), *dprA*⁻ (R3587) and *CEP_{lac}-dprA, dprA*⁻ (R3833) cells transformed with radiolabeled DNA in varying IPTG concentrations. Top bands represent chromosomal DNA, and smears represent radiolabeled transforming ssDNA. Time represents time after blockage of DNA uptake by DNase addition.

B. Plots of the relative areas underneath the density curves calculated from the gel in panel A.

C. Electrophoregram of agarose gel of DNA extracted from *dprA*⁺ (R1818), *dprA*⁻ (R2017), *dprA*^{AR} (R3108) and *dprA*^{QNO} (R2830) cells transformed with radiolabeled DNA. Top bands represent chromosomal DNA, and smears represent radio labeled transforming ssDNA. Time represents time after blockage of DNA uptake by DNase.

D. Plot of the relative areas underneath the density curves calculated from the gel in panel C.

is as important for transformation as its ability to interact with RecA (Quevillon-Cheruel *et al.*, 2012). The stability of transforming ssDNA in a DprA dimerization mutant (*DprA*^{AR}), which is able to interact with RecA but interacts poorly with ssDNA, was thus also analyzed. These two DprA mutants were incapable of protecting transforming ssDNA (Fig. 4C). Calculated areas under density plots confirmed that these two mutants do not detectably protect ssDNA better than cells lacking *dprA* (Fig. 4D). Thus, the dimerization of DprA and its interaction with RecA are both crucial for transformation (Quevillon-Cheruel *et al.*, 2012) but also for protection of transforming ssDNA. Taken together with the fact that transformation and ssDNA protection require similar cellular levels of DprA, these results strongly suggest that the actions of DprA in both of these processes stem from a single mechanism: the DprA-mediated loading of RecA onto transforming ssDNA.

Optimal competence shut-off requires full expression of dprA

The master regulator of competence ComE is produced at over 80,000 molecules per competent cell (B. Martin *et al.*, 2013), although it is unclear what proportion of this is phosphorylated. In addition, previous experiments showed that full expression of *dprA* was not required for optimal transformation (Fig. 3). We next explored whether the high levels of DprA expression during competence were necessary for its interaction with ComE~P to mediate competence shut-off. To determine the impact of reducing cellular levels of DprA on competence shut-off, a transcriptional fusion consisting of the promoter of the late *com* gene *ssbB* and the *luc* reporter gene (Chastanet *et al.*, 2001), which allows tracking of competence in live cells in real time, was inserted into the *CEP_{lac}-dprA, dprA*⁻ strain. The shut-off of competence was determined in this strain in the same IPTG gradient

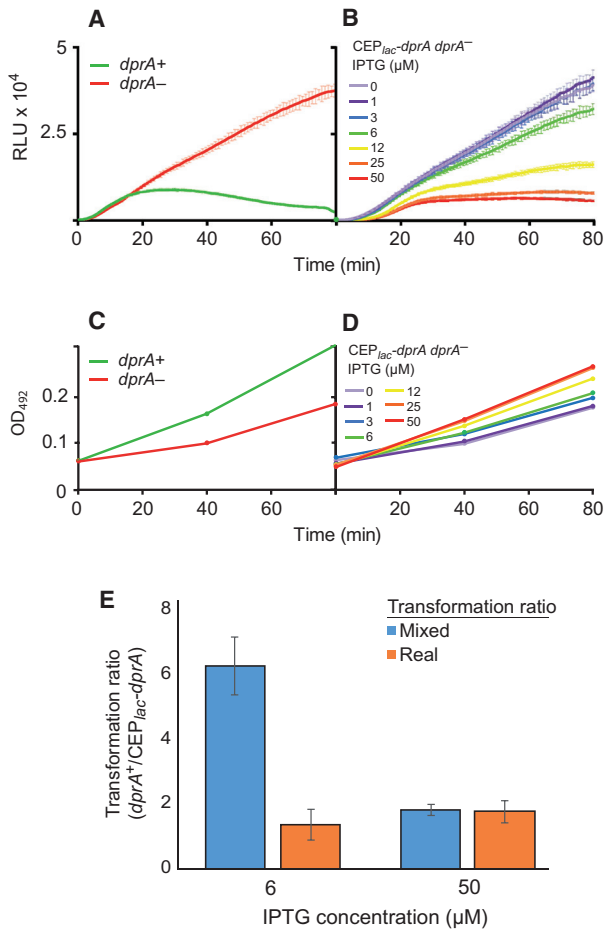


Fig. 5. The effect of varying IPTG concentration on competence shut-off in $CEP_{lac-dprA}, dprA^-$.
 A. Competence shut-off tracked using *ssbB-luc* in wildtype (R3584, green) and $dprA^-$ (R3587, red) strains. Results represent averages of triplicate repeats.
 B. Competence shut-off tracked using *ssbB-luc* in $CEP_{lac-dprA}, dprA^-$ (R3834) at varying concentrations of IPTG. 0 μ M, purple; 1 μ M, violet; 3 μ M, blue; 6 μ M, green; 12 μ M, yellow; 25 μ M, orange; 50 μ M, red. Results represent averages of triplicate repeats.
 C. Growth curves of wildtype (R3584, green) and $dprA^-$ (R3587, red) strains, with OD readings taken every 40 min.
 D. Growth curves of $CEP_{lac-dprA}, dprA^-$ in varying IPTG concentrations. 0 μ M, purple; 1 μ M, violet; 3 μ M, blue; 6 μ M, green; 12 μ M, yellow; 25 μ M, orange; 50 μ M, red. OD readings taken every 40 min.
 E. Ratios of transformation efficiency between $dprA^+$ (R3584) and $CEP_{lac-dprA}, dprA^-$ (R3833) cells in conditions where $CEP_{lac-dprA}, dprA^-$ transforms optimally but does not (50 μ M IPTG) or does not (6 μ M IPTG) shut-off competence optimally. Comparing real (orange) and mixed (blue) transformation efficiencies allows us to determine the effect of abrogating competence shut-off on transformant fitness (see Figure S6). Results represent averages of triplicate repeats. Ratios and error bars as follows: 6 μ M IPTG mixed ratio, 6.2 \pm 0.9; 6 μ M IPTG real ratio 1.3 \pm 0.2; 50 μ M IPTG mixed ratio, 1.8 \pm 0.5; 50 μ M IPTG real ratio 1.7 \pm 0.4.

as used above, compared to wildtype and $dprA^-$ strains. Competence was rapidly induced in wild-type cells, reaching a peak around 20 min post-induction, followed by shut-off (Fig. 5A). In the absence of $dprA$, no

competence shut-off was observed (Fig. 5A), in line with previous results (Mirouze *et al.*, 2013). In the $CEP_{lac-dprA}, dprA^-, ssbB-luc$ strain, the peak of competence occurs slightly later than in the wildtype strain (Fig. 5B), possibly due to the ectopic expression of $dprA$ prior to competence induction. However, a reduction in competence shut-off compared to wild type is observed even when \sim 5,000 DprA molecules are produced per competent cell. Below this point, a sequential loss of competence shut-off was observed, with no shut-off at all observed below \sim 650 DprA molecules per cell (Fig. 5B). As previously reported, the absence of $dprA$ delays growth in competent cells (Mirouze *et al.*, 2013). Following growth in $CEP_{lac-dprA}, dprA^-$ cells after competence induction revealed an inverse correlation between growth rate and competence shut-off (Figs 5D and S3) with growth more severely affected in conditions where competence was poorly shut-off. This confirmed the importance of competence shut-off for pneumococcal physiology. Taken together, these results show that optimal competence shut-off, but not transformation, requires high cellular levels of DprA.

High cellular levels of DprA are important for transformant fitness

To determine if absence of DprA impacts cell viability, colony-forming units (cfu mL^{-1}) were compared to OD_{492} readings in competent $dprA^+$ and $dprA^-$ cultures. This revealed a decrease in viability in $dprA^-$ cultures, strongly suggesting that the lack of competence shut-off affects cell viability as well as negatively impacting growth (Fig. S4). This was confirmed by tracking competent $dprA^+$ and $dprA^-$ cells by microscopy, where frequent cell lysis was observed in $dprA^-$ cells (Fig. S5). The absence of DprA thus impacts cell viability as well as physiology. This suggested that high levels of DprA in competent cells mediate competence shut-off and thus ensure fitness of transformants. To explore this, we took advantage of the fact that a $CEP_{lac-dprA}, dprA^-$ strain grown in 6 μ M IPTG transformed at wild-type levels (Fig. 3B) while displaying almost no shut-off of competence (Fig. 5B). An equal number of competent $dprA^+$ and $CEP_{lac-dprA}, dprA^-$ cells containing different selectable markers (Cm^R and Kan^R respectively) were mixed and grown in 6 μ M IPTG. Cells were then transformed with an *rpsL41* DNA fragment (conferring Sm^R) and grown together in liquid culture for 3 h and 30 mins prior to plating and selection. During this time period, $dprA^+$ cells should transform, then rapidly shut-off competence and grow, while $CEP_{lac-dprA}, dprA^-$ cells should also transform but then take longer to shut-off competence, strongly impacting growth (Fig. S3). By comparing transformation efficiencies based on the whole mixed population or each individual population, we

can directly compare the fitness of transformants (Figs S6 and S7). Comparing transformation of individual populations (real transformation ratio) showed that CEP_{lac}-*dprA*, *dprA*⁻ cells transformed at levels comparable to *dprA*⁺ cells (Fig. 5E). When comparing transformation efficiencies based on the whole mixed population (mixed transformation ratio), *dprA*⁺ transformants were recovered over 6-fold more than CEP_{lac}-*dprA*, *dprA*⁻ (Fig. 5E), showing that although the individual populations transformed at similar levels, the lack of competence shut-off in CEP_{lac}-*dprA*, *dprA*⁻ resulted in these transformants being out-competed by *dprA*⁺ transformants. However, in 50 μM IPTG, where CEP_{lac}-*dprA*, *dprA*⁻ cells transform fully and shut off competence, the *dprA*⁺ cells did not out-compete the CEP_{lac}-*dprA*, *dprA*⁻ cells, since both shut-off competence (Fig. 5E). This showed that the high levels of DprA produced in competent cells ensure the fitness of transformants by rapidly shutting off competence, promoting the propagation of cells having acquired potentially advantageous genetic alterations.

Discussion

Optimal transformation efficiency does not require full dprA expression

In this study, we showed that although ~8300 molecules of DprA are produced per competent cell, only ~650–2250 are required to ensure optimal transformation efficiency (Fig. 3). Below ~650 DprA molecules per cell, a rapid drop in efficiency is observed, although even with only ~40 DprA molecules, transformation still occurs. Despite a ~240-fold decrease in efficiency compared to optimal conditions, this remains high above the ~10,000-fold decrease observed in *dprA*⁻ cells (Bergé *et al.*, 2003; I. Mortier-Barrière *et al.*, 2007). Thus, ~40 DprA molecules per cell is enough to carry out transformation, but between ~650 and ~2250 molecules are required to ensure optimal transformation. This is most likely an over-estimate of the number of DprA molecules required for transformation, as in these conditions, competence shut-off still occurs to some extent (Fig. 5B), and thus the majority of available DprA may be mobilized to this end rather than for transformation. Therefore, fewer DprA molecules are probably required for transformation, but this is masked by the secondary role of DprA in competence shut-off.

Linking the roles of DprA in ssDNA protection and homologous recombination during transformation

By using radiolabeled donor DNA, we were able to demonstrate that the protection of transforming ssDNA paralleled transformation efficiency in competent cells expressing varying levels of DprA. The fact that *dprA*^{AR}

and *dprA*^{ONQ} mutant cells, in which DprA cannot dimerize (and as a result interacts poorly with ssDNA) or interact with RecA, respectively, also do not protect ssDNA, shows that three interactions are necessary for ssDNA protection. Firstly, DprA must be able to form dimers, secondly, DprA dimers must be able to interact with transforming ssDNA and finally, DprA must be able to interact with RecA. Taken together with the fact that both DprA and RecA are crucial for ssDNA protection (Bergé *et al.*, 2003), this result shows that the recombination mediator action of DprA also ensures protection of transforming ssDNA from degradation. These results demonstrate for the first time that the protective role of DprA on ssDNA is mediated directly by the loading of RecA onto ssDNA. This strongly suggests that the polymerization of RecA along transforming ssDNA prevents nuclease access, mediating protection.

Cellular levels of DprA are high during competence to ensure optimal competence shut-off

The unexpected finding of a key role for DprA in competence shut-off (Mirouze *et al.*, 2013) makes this protein unique in playing two central roles in two intrinsically linked processes. These two roles involve starkly different mechanisms and protein domains. DprA forms dimers by self-interaction via the eRF domain (Fig. 1B), and during transformation these dimers bind to transforming ssDNA via the DNA-binding domain at the centre of the DprA protein (Quevillon-Cheruel *et al.*, 2012). DprA also interacts with RecA via the eRF domain, with a strong overlap between RecA-binding and dimerization interfaces. The role of DprA in competence shut-off involves the N-terminal SAM domain, which binds strongly to ComE~P, the dimeric active form of the ComE response regulator. It was suggested that DprA either interacts with ComE~P to remove it from its target DNA, disrupts the phosphorylated ComE~P dimer or sequesters ComE~P to promote competence shut-off (Mirouze *et al.*, 2013). While ~80,000 molecules of ComE are produced during competence (B. Martin *et al.*, 2013), 10-fold less DprA molecules are produced (Mirouze *et al.*, 2013). However, since DprA primarily interacts with ComE~P, which likely makes up a minority fraction of cellular ComE, DprA may in fact be in excess compared to its ComE~P target. The ratio of ComE/ComE~P was shown to govern competence initiation and shut-off, with ComE~P and ComE competing for access to the same early *com* gene promoters. ComE~P activates these promoters, while ComE represses them (B. Martin *et al.*, 2013). Interaction of DprA with ComE~P thus alters this ratio in favor of the repressor ComE by removing ComE~P, mediating shut-off.

Here we have shown that optimal competence shut-off requires full expression of *dprA*, with a stark decrease in shut-off observed below 5,000 DprA molecules per

competent cell. In light of our findings, antiactivation of ComE~P on its target DNA appears the least likely hypothesis for DprA activity in competence shut-off, since such high levels of DprA are required for optimal shut-off and ComE~P has only nine genetic targets (B. Martin *et al.*, 2013). We suggest that DprA more likely either dephosphorylates ComE~P dimers or sequesters ComE~P to prevent access to the early *com* gene promoters. Either of these activities would potentially require high cellular levels of DprA to shift the ComE/ComE~P ratio in favor of ComE and mediate competence shut-off.

Our findings show that high cellular levels of DprA are key for the shut-off of pneumococcal competence but not necessary for the primary role of DprA as a RMP in transformation. The secondary role of DprA in competence shut-off is an acquired role (Mirouze *et al.*, 2013). Competence is controlled by ComDE in *mitis* and *anginosus* groups of streptococci but by ComRS in the remaining streptococci (Mirouze *et al.*, 2013). Comparing the evolution rates of DprA among streptococci showed that the SAM domain of DprA, which interacts with ComE~P to shut-off competence, shows a higher rate of evolution than the eRF domain in streptococci regulating competence via ComDE but not those using ComRS. This strongly suggested that the control of competence shut-off by DprA is conserved among the *anginosus* and *mitis* groups of streptococci (Mirouze *et al.*, 2013). In light of our findings, we suggest that the role of DprA in competence shut-off via interaction with ComE~P may be coupled to the high level of cellular DprA necessary for the role of this protein in competence shut-off. This coupling may be conserved among these two groups of streptococci

to facilitate the shut-off of competence in species which depend on ComDE for competence regulation.

High cellular levels of DprA ensure transformant fitness to maximize adaptive potential

The lack of DprA in competent cells was previously shown to be detrimental for pneumococcal physiology *in vitro* (Mirouze *et al.*, 2013) as well as bacteraemia and pneumonia *in vivo* (Zhu *et al.*, 2015). Here, we have shown that competence induces cell lysis in a *dprA*⁻ population (Fig. S4). Furthermore, high cellular levels of DprA during competence are crucial for the fitness of transformants (Fig. 5E). These findings demonstrate that although low levels of DprA in competent cells can ensure optimal transformation (Fig. 3), high cellular levels of DprA are required to ensure the propagation and survival of these transformants. The pneumococcus colonizes the human nasopharynx, an environment it shares with many other bacteria (Tsai *et al.*, 2015). In a situation where competence is induced in response to a stress such as exposure to antibiotics (Prudhomme *et al.*, 2006), the whole pneumococcal population becomes competent, but only a minority may gain a selective advantage allowing survival in response to the initial stress. This minority, despite having a selective advantage over the rest of the pneumococcal population, would be out-competed by neighboring species which may already be resistant to the stress if they lacked *dprA* and thus did not shut-off competence, and the pneumococcal population would not survive. However, competence is not always a reactive mechanism. For example, capsule switching

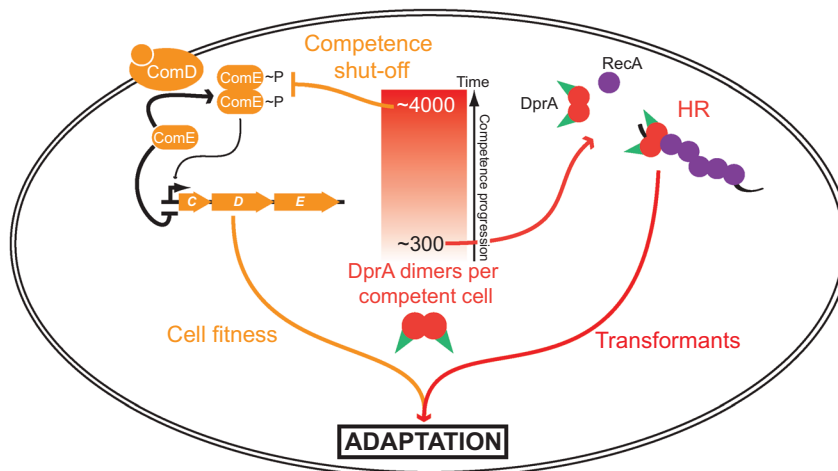


Fig. 6. Cellular levels of DprA during competence dictate transformant fitness and adaptive potential. The number of DprA dimers present in competent cells evolves over time during the induction of competence (red gradient box). Full expression of DprA (~4,000 dimers) is required for competence shut-off (orange). DprA dimers either dephosphorylate or sequester ComE~P dimers, which shifts the ratio of ComE/ComE~P in favor of the repressive ComE, promoting competence shut-off. However, only ~300 DprA dimers are required to ensure optimal transformation efficiency (red). DprA is necessary to generate transformants, and to ensure cell fitness by shutting off competence, ensuring the adaptive potential of transformation can be realized.

by transformation, which allows vaccine escape (Wyres *et al.*, 2013), occurs spontaneously within mixed populations and not as a response to vaccine administration (Croucher *et al.*, 2014). In this situation, high cellular levels of DprA allow capsule switch transformants to compete with the rest of the niche population in the absence of selective pressure. Thus, by ensuring rapid and efficient competence shut-off, high cellular levels of DprA ensure the fitness of pneumococcal transformants, allowing them to propagate and survive. This in turn maximizes the adaptive potential of the pneumococcus (Fig. 6).

Concluding remarks

The induction of pneumococcal competence is crucial to the lifestyle of the pneumococcus, since it mediates transformation and thus allows adaptation. However, uncontrolled competence induction is detrimental to pneumococcal physiology, affecting both pneumococcal physiology *in vitro* (Mirouze *et al.*, 2013) and survival *in vitro* (Fig. S4) and *in vivo* (Zhu *et al.*, 2015). Since DprA interacts directly with ComE~P to mediate the shut-off of pneumococcal competence, there is a direct link between DprA and pneumococcal fitness. It has been suggested that the link between competence and fitness provides a selective pressure for maintenance of an intact *com* regulon, which in turn provides the adaptive benefit of transformation (Lin *et al.*, 2016). Here, we have shown that the high cellular levels of DprA are crucial for optimal competence shut-off and for the fitness of transformants. We suggest that these high levels have evolved to ensure tight control of competence shut-off, ensuring the fitness of competent pneumococcal cells and the survival and propagation of transformants, thus maximizing the adaptive potential that transformation provides. Since DprA is required both to generate pneumococcal transformants and ensure their fitness, it emerges as an interesting therapeutic target to drastically reduce the adaptive potential of this human pathogen in response to treatment.

Experimental procedures

Bacterial strains, primers and transformation

The pneumococcal strains and primers used in this study can be found in Table S1. Standard procedures for transformation and growth media were used (B. Martin, *et al.*, 2000). In this study, cells were rendered unable to spontaneously develop competence by replacing the *comC* gene which encodes CSP1 with an allelic variant encoding CSP2 (Pozzi *et al.*, 1996), since ComD1 is unable to respond to CSP2 (Johnsborg *et al.*, 2006). Unless described, pre-competent cultures were prepared by

growing cells to a OD_{550} of 0.1 in C+Y medium before 10-fold concentration and storage at -80°C as 100 μL aliquots. Antibiotic concentrations ($\mu\text{g mL}^{-1}$) used for the selection of *S. pneumoniae* transformants were: chloramphenicol (Cm), 4.5; kanamycin (Kan), 250; spectinomycin (Spc), 100; streptomycin (Sm), 200. For the monitoring of growth and *luc* expression, precultures were gently thawed and aliquots were inoculated (1 in 100) in luciferin-containing (Prudhomme, and Claverys, 2007) C+Y medium and distributed (300 ml per well) into a 96-well white microplate with clear bottom. Relative luminescence unit (RLU) and OD values were recorded throughout incubation at 37°C in a Varioskan luminometer (ThermoFisher). The *ssbB-luc* reporter gene was transferred from R895 as previously described (Chastanet *et al.*, 2001). The *dprA::spc^{21C}* cassette was transferred from R1800 as previously described (Mirouze *et al.*, 2013).

Assessing transformation efficiency of *CEP_{lac}-dprA*, *dprA*⁻

To determine the transformation efficiency of R3834 (*CEP_{lac}-dprA*, *dprA*⁻), we used a previously described transformation protocol (B. Martin *et al.*, 2000). Briefly, pre-competent cells were prepared by growth to OD_{550} 0.1 in 3 mL C+Y medium containing varying concentrations of IPTG (1, 3, 6, 12, 25, 50 μM), centrifuged to harvest cells and resuspended in 300 μL C+Y with 15% glycerol before being split into aliquots of 100 μL containing $\sim 10^7$ cells. For transformation, 100 μL aliquots of pre-competent cells were resuspended in 900 μL fresh C+Y medium with 100 ng mL^{-1} CSP and appropriate IPTG concentrations and incubated at 37°C for 10 min. Transforming DNA was then added to a 100 μL aliquot of this culture, followed by incubation at 30°C for 20 min. Cells were then diluted and plated on 10 mL CAT agar with 5% horse blood and appropriate concentrations of IPTG before incubation at 37°C for 2 h. A second 10 mL layer of CAT agar with streptomycin (200 $\mu\text{g mL}^{-1}$) was added to plates to select transformants, and plates without antibiotic were used as comparison to calculate transformation efficiency. Plates were incubated overnight at 37°C . Transforming DNA was either 25 ng of R304 (I. Mortier-Barrière *et al.*, 1998) genomic DNA ($\sim 1.5 \times 10^8$ chromosomes) or 6×10^{-3} ng ($\sim 3 \times 10^6$ DNA molecules) of a 1982 bp PCR fragment amplified with primer pair *rpsL3-rpsL4*, both possessing an *rpsL41* point mutation conferring streptomycin resistance. Since these molecules were transformed into $\sim 10^7$ competent cells, this represented ~ 10 *rpsL41*-providing DNA molecules per competent cell for genomic DNA and ~ 1 molecule per 3 competent cells for the PCR. Both R304 genomic DNA and the PCR fragment transferred the *rpsL41* point mutation, conferring streptomycin

resistance. Results presented are averages of triplicate repeats. Statistical analyses used were unpaired *t*-tests done using GraphPad Prism 7.04. *p*-values were adjusted for multiple comparisons by the Benjamini-Hochberg procedure (Benjamini and Hochberg, 1995) with an accepted false discovery rate of 5%.

Assessing competence shut-off and growth of *CEP_{lac}⁻dprA⁻, dprA⁻, ssbB-luc*

To determine the effect of varying cellular DprA levels on competence shut-off, we used a previously described protocol (Prudhomme and Claverys, 2007), with modifications. Briefly, cells were grown to OD₅₅₀ 0.2 in 2 mL C+Y medium containing varying concentrations of IPTG (1, 3, 6, 12, 25, 50 μM), harvested and resuspended in 1 mL C+Y with 15% glycerol before being split into 100 μL aliquots. Cells were then diluted 100-fold in 270 μL C+Y with 0.5 mM luciferin and appropriate IPTG concentration in a 96-well plate before incubation at 37°C in a Varioskan luminometer (ThermoFisher) with luminometry and OD readings every 10 min. When an OD₄₉₂ of ~0.05 was reached, 200 ng mL⁻¹ CSP was added to each well, and the plate was incubated for 37°C with luminometry readings every 2 min for 80 min to track the shut-off of competence. Results presented are averages of triplicate repeats. To assess the effect of varying cellular DprA levels on growth, a similar experiment was carried out, although no luminometry readings were taken, and optical density was measured every 10 min for 3 h.

Co-transformation analysis of transformant fitness

Pre-competent *dprA⁺* (R3584, Cm^R) and *CEP_{lac}⁻dprA⁻, dprA⁻* (R3833, Kan^R, Spc^R) cells were grown in varying concentrations of IPTG (50, 6 μM) and stored at -80°C as 50 μL aliquots. *dprA⁺* cells were then mixed 1:1 with *CEP_{lac}⁻dprA⁻, dprA⁻* cells and diluted 10-fold in C+Y containing either 50 or 6 μM IPTG and competence was induced by addition of 200 ng mL⁻¹ CSP. Cells were then incubated for 10 min at 37°C before addition of 100 ng mL⁻¹ transforming DNA (PCR fragment of 1.4 kb possessing *rpsL41* point mutation conferring streptomycin resistance, Sm^R) before further incubation at 30°C for 20 min. Approximately 1.4 mL fresh C+Y was added to cultures, followed by incubation at 37°C for a further 3 h and 30 min. Cultures were then diluted and cells were plated on CAT agar supplemented with 5% horse blood and appropriate antibiotics. Cells were plated to determine total cells present (no selection), *dprA⁺* cells present (Cm^R), *CEP_{lac}⁻dprA⁻, dprA⁻* cells present (Kan^R), *dprA⁺* transformants (Cm^R, Sm^R), and *CEP_{lac}⁻dprA⁻, dprA⁻* transformants (Kan^R, Sm^R).

Acknowledgements

We thank Nathalie Campo and Mathieu Bergé for critical reading of the manuscript. We also thank Mathieu Bergé for the *comC2D1* construct. We thank Bernard Martin for help initiating the project and for useful discussions. We thank Anne-Lise Soulet for experimental assistance. We thank Jérôme Rech for assistance with microscopy. This work was funded by the Centre National de la Recherche Scientifique, University Paul Sabatier, Agence Nationale de la Recherche (grants ANR-10BLAN-1331 and EXStasis-17-CE13-0031-01).

Author contributions

Conceived and designed the experiments: CJ IMB PP. Performed the experiments: CJ IMB. Developed experimental tools: VK. Analyzed the data: CJ PP. Wrote the paper: CJ PP. Edited the paper: CJ IMB VK PP.

References

- Ando, T., Israel, D.A., Kusugami, K., and Blaser, M.J. (1999) HP0333, a member of the *dprA* family, is involved in natural transformation in *Helicobacter pylori*. *J Bacteriol* **181**: 5572–5580.
- Attaiech, L., Granadel, C., Claverys, J.-P., and Martin, B. (2008) RadC, a misleading name? *J Bacteriol* **190**: 5729–5732.
- Attaiech, L., Olivier, A., Mortier-Barrière, I., Soulet, A.-L., Granadel, C., Martin, B., and Claverys, J.-P. (2011) Role of the single-stranded DNA-binding protein SsbB in pneumococcal transformation: maintenance of a reservoir for genetic plasticity. *PLoS Genet* **7**(6): e1002156.
- Benjamini, Y., and Hochberg, Y. (1995) Controlling the false discovery rate: a practical and powerful approach to multiple testing. *J Roy Stat Soc Series B (Methodol)* **57**: 289–300.
- Bergé, M., Moscoso, M., Prudhomme, M., Martin, B., and Claverys, J.-P. (2002) Uptake of transforming DNA in gram-positive bacteria: a view from *Streptococcus pneumoniae*. *Mol Microbiol* **45**: 411–421.
- Bergé, M., Mortier-Barrière, I., Martin, B., and Claverys, J.-P. (2003) Transformation of *Streptococcus pneumoniae* relies on DprA- and RecA-dependent protection of incoming DNA single strands. *Mol Microbiol* **50**: 527–536.
- Chastanet, A., Prudhomme, M., Claverys, J.P., and Msadek, T. (2001) Regulation of *Streptococcus pneumoniae* *clp* genes and their role in competence development and stress survival. *J Bacteriol* **183**: 7295–7307.
- Claverys, J.-P., and Havarstein, L.S. (2002) Extracellular-peptide control of competence for genetic transformation in *Streptococcus pneumoniae*. *Front Biosci: J Virtual Lib* **7**: d1798–1814.
- Claverys, J.-P., and Martin, B. (2003) Bacterial 'competence' genes: signatures of active transformation, or only remnants? *Trends Microbiol* **11**: 161–165.
- Claverys, J.-P., Prudhomme, M., and Martin, B. (2006) Induction of competence regulons as a general response

- to stress in gram-positive bacteria. *Annu Rev Microbiol* **60**: 451–475.
- Claverys, J.-P., Martin, B., and Polard, P. (2009) The genetic transformation machinery: composition, localization, and mechanism. *FEMS Microbiol Rev* **33**: 643–656.
- Croucher, N.J., Harris, S.R., Fraser, C., Quail, M.A., Burton, J., van der Linden, M., and Bentley, S.D. (2011) Rapid pneumococcal evolution in response to clinical interventions. *Science* **331**: 430–434.
- Croucher, N.J., Chewapreecha, C., Hanage, W.P., Harris, S.R., McGee, L., van der Linden, M., et al. (2014) Evidence for soft selective sweeps in the evolution of pneumococcal multidrug resistance and vaccine escape. *Genome Biol Evol* **6**: 1589–1602.
- Dagkessamanskaia, A., Moscoso, M., Hénard, V., Guiral, S., Overweg, K., Reuter, M., et al. (2004) Interconnection of competence, stress and CiaR regulons in *Streptococcus pneumoniae*: competence triggers stationary phase autolysis of ciaR mutant cells. *Mol Microbiol* **51**: 1071–1086.
- Diallo, A., Foster, H.R., Gromek, K.A., Perry, T.N., Dujeancourt, A., Krasteva, P.V., and Fronzes, R. (2017) Bacterial transformation: ComFA is a DNA-dependent ATPase that forms complexes with ComFC and DprA. *Mol Microbiol* **105**: 741–754.
- Duffin, P.M., and Barber, D.A. (2016) DprA is required for natural transformation and affects pilin variation in *Neisseria gonorrhoeae*. *Microbiology* **162**(9): 1620–1628.
- Guiral, S., Hénard, V., Laaberki, M.-H., Granadel, C., Prudhomme, M., Martin, B., and Claverys, J.-P. (2006) Construction and evaluation of a chromosomal expression platform (CEP) for ectopic, maltose-driven gene expression in *Streptococcus pneumoniae*. *Microbiology* **152**: 343–349.
- Hovland, E., Beyene, G.T., Frye, S.A., Homberset, H., Balasingham, S.V., Gómez-Muñoz, M., and Ambur, O.H. (2017) DprA from *Neisseria meningitidis*: properties and role in natural competence for transformation. *Microbiology* **163**: 1016–1029.
- Hui, F.M., Zhou, L., and Morrison, D.A. (1995) Competence for genetic transformation in *Streptococcus pneumoniae*: organization of a regulatory locus with homology to two lactococcal A secretion genes. *Gene* **153**: 25–31.
- Johnsborg, O., Kristiansen, P.E., Blomqvist, T., and Håvarstein, L.S. (2006) A hydrophobic patch in the competence-stimulating peptide, a pneumococcal competence pheromone, is essential for specificity and biological activity. *J Bacteriol* **188**: 1744–1749.
- Johnston, C., Martin, B., Fichant, G., Polard, P., and Claverys, J.-P. (2014) Bacterial transformation: distribution, shared mechanisms and divergent control. *Nat Rev Microbiol* **12**: 181–196.
- Karudapuram, S., Zhao, X., and Barcak, G.J. (1995) DNA sequence and characterization of Haemophilus influenzae dprA+, a gene required for chromosomal but not plasmid DNA transformation. *J Bacteriol* **177**: 3235–3240.
- Lacks, S., and Neuberger, M. (1975) Membrane location of a deoxyribonuclease implicated in the genetic transformation of *Diplococcus pneumoniae*. *J Bacteriol* **124**: 1321–1329.
- Lacks, S., Greenberg, B., and Neuberger, M. (1974) Role of a deoxyribonuclease in the genetic transformation of *Diplococcus pneumoniae*. *Proc Nat Acad Sci USA* **71**: 2305–2309.
- Laurenceau, R., Péhau-Arnaudet, G., Baconnais, S., Gault, J., Malosse, C., Dujeancourt, A., and Fronzes, R. (2013) A type IV pilus mediates DNA binding during natural transformation in *Streptococcus pneumoniae*. *PLoS Pathog* **9**(6): e1003473.
- Laurenceau, R., Krasteva, P.V., Diallo, A., Ouarti, S., Duchateau, M., Malosse, C., and Fronzes, R. (2015) Conserved *Streptococcus pneumoniae* spiroosomes suggest a single type of transformation pilus in competence. *PLoS Pathog* **11**(4): e1004835.
- Lee, M.S., and Morrison, D.A. (1999) Identification of a new regulator in *Streptococcus pneumoniae* linking quorum sensing to competence for genetic transformation. *J Bacteriol* **181**(16): 5004–5016.
- Li, G.-W., Burkhardt, D., Gross, C., and Weissman, J.S. (2014) Quantifying absolute protein synthesis rates reveals principles underlying allocation of cellular resources. *Cell* **157**: 624–635.
- Lin, J., Zhu, L., and Lau, G.W. (2016) Disentangling competence for genetic transformation and virulence in *Streptococcus pneumoniae*. *Curr Genet* **62**: 97–103.
- Liu, X., Gallay, C., Kjos, M., Domenech, A., Slager, J., van Kessel, S.P., and Veening, J.-W. (2017) High-throughput CRISPRi phenotyping identifies new essential genes in *Streptococcus pneumoniae*. *Mol Syst Biol* **13**(5): 931.
- Martin, B., Prudhomme, M., Alloing, G., Granadel, C., and Claverys, J.P. (2000) Cross-regulation of competence pheromone production and export in the early control of transformation in *Streptococcus pneumoniae*. *Mol Microbiol* **38**: 867–878.
- Martin, B., Soulet, A.-L., Mirouze, N., Prudhomme, M., Mortier-Barrière, I., Granadel, C., and Claverys, J.-P. (2013) ComE/ComE-P interplay dictates activation or extinction status of pneumococcal X-state (competence). *Mol Microbiol* **87**: 394–411.
- Mirouze, N., Bergé, M.A., Soulet, A.-L., Mortier-Barrière, I., Quentin, Y., Fichant, G., and Claverys, J.-P. (2013) Direct involvement of DprA, the transformation-dedicated RecA loader, in the shut-off of pneumococcal competence. *Proc Nat Acad Sci US A* **110**: E1035–1044.
- Morrison, D.A., Mortier-Barrière, I., Attaiech, L., and Claverys, J.-P. (2007) Identification of the major protein component of the pneumococcal eclipse complex. *J Bacteriol* **189**: 6497–6500.
- Mortier-Barrière, I., de Saizieu, A., Claverys, J.P., and Martin, B. (1998) Competence-specific induction of recA is required for full recombination proficiency during transformation in *Streptococcus pneumoniae*. *Mol Microbiol* **27**: 159–170.
- Mortier-Barrière, I., Velten, M., Dupaigne, P., Mirouze, N., Piétrement, O., McGovern, S., and Claverys, J.-P. (2007) A key presynaptic role in transformation for a widespread bacterial protein: DprA conveys incoming ssDNA to RecA. *Cell* **130**: 824–836.
- Peterson, S.N., Sung, C.K., Cline, R., Desai, B.V., Snesrud, E.C., Luo, P., and Morrison, D.A. (2004) Identification of competence pheromone responsive genes in *Streptococcus pneumoniae* by use of DNA microarrays. *Mol Microbiol* **51**: 1051–1070.

- Pozzi, G., Masala, L., Iannelli, F., Manganeli, R., Havarstein, L.S., Piccoli, L., and Morrison, D.A. (1996) Competence for genetic transformation in encapsulated strains of *Streptococcus pneumoniae*: two allelic variants of the peptide pheromone. *J Bacteriol* **178**: 6087–6090.
- Prudhomme, M., Attaiech, L., Sanchez, G., Martin, B., and Claverys, J.-P. (2006) Antibiotic stress induces genetic transformability in the human pathogen *Streptococcus pneumoniae*. *Science* **313**(5783): 89–92.
- Prudhomme, M., and Claverys, J.-P. (2007) There will be a light: the use of luc transcriptional fusions in living pneumococcal cells. In *The Molecular Biology of Streptococci*. Hakenbeck, R., and Chatwal, G.S. (ed). Norfolk: Horizon Scientific Press, pp. 519–524.
- Quevillon-Cheruel, S., Campo, N., Mirouze, N., Mortier-Barrière, I., Brooks, M.A., Boudes, M., and Polard, P. (2012) Structure-function analysis of pneumococcal DprA protein reveals that dimerization is crucial for loading RecA recombinase onto DNA during transformation. *Proc Nat Acad Sci USA* **109**: E2466–2475.
- Smeets, L.C., Bijlsma, J.J., Kuipers, E.J., Vandenbroucke-Grauls, C.M., and Kusters, J.G. (2000) The dprA gene is required for natural transformation of *Helicobacter pylori*. *FEMS Immunol Med Microbiol* **27**: 99–102.
- Takata, T., Ando, T., Israel, D.A., Wassenaar, T.M., and Blaser, M.J. (2005) Role of dprA in transformation of *Campylobacter jejuni*. *FEMS Microbiol Lett* **252**: 161–168.
- Tsai, M.-H., Huang, S.-H., Chen, C.-L., Chiu, C.-Y., Hua, M.-C., Liao, S.-L., and Huang, J.-L. (2015) Pathogenic bacterial nasopharyngeal colonization and its impact on respiratory diseases in the first year of life: the PATCH Birth Cohort Study. *Pediatr Infect Dis J* **34**: 652–658.
- Vagner, V., Dervyn, E., and Ehrlich, S.D. (1998) A vector for systematic gene inactivation in *Bacillus subtilis*. *Microbiology* **144**(Pt 11): 3097–3104.
- Wyres, K.L., Lambertsen, L.M., Croucher, N.J., McGee, L., von Gottberg, A., Liñares, J., and Brueggemann, A.B. (2013) Pneumococcal capsular switching: a historical perspective. *J Infect Dis* **207**: 439–449.
- Yadav, T., Carrasco, B., Myers, A.R., George, N.P., Keck, J.L., and Alonso, J.C. (2012) Genetic recombination in *Bacillus subtilis*: a division of labor between two single-strand DNA-binding proteins. *Nucl Acids Res* **40**: 5546–5559.
- Yadav, T., Carrasco, B., Hejna, J., Suzuki, Y., Takeyasu, K., and Alonso, J.C. (2013) *Bacillus subtilis* DprA recruits RecA onto single-stranded DNA and mediates annealing of complementary strands coated by SsbB and SsbA. *J Biol Chem* **288**: 22437–22450.
- Zhu, L., Lin, J., Kuang, Z., Vidal, J.E., and Lau, G.W. (2015) Deletion analysis of *Streptococcus pneumoniae* late competence genes distinguishes virulence determinants that are dependent or independent of competence induction. *Mol Microbiol* **97**: 151–165.

Supporting information

Additional supporting information may be found online in the Supporting Information section at the end of the article.