



Gas slip flow in a fracture: local Reynolds equation and upscaled macroscopic model

Tony Zaouter, Didier Lasseux, Marc Prat

► To cite this version:

Tony Zaouter, Didier Lasseux, Marc Prat. Gas slip flow in a fracture: local Reynolds equation and upscaled macroscopic model. *Journal of Fluid Mechanics*, 2018, 837, pp.413 - 442. 10.1017/jfm.2017.868 . hal-02366909v1

HAL Id: hal-02366909

<https://hal.science/hal-02366909v1>

Submitted on 16 Nov 2019 (v1), last revised 25 Sep 2019 (v2)

HAL is a multi-disciplinary open access archive for the deposit and dissemination of scientific research documents, whether they are published or not. The documents may come from teaching and research institutions in France or abroad, or from public or private research centers.

L'archive ouverte pluridisciplinaire **HAL**, est destinée au dépôt et à la diffusion de documents scientifiques de niveau recherche, publiés ou non, émanant des établissements d'enseignement et de recherche français ou étrangers, des laboratoires publics ou privés.

Gas slip flow in a fracture: local Reynolds equation and upscaled macroscopic model

Tony Zaouter^{1, 3}, Didier Lasseux^{2†} and Marc Prat¹

¹Institut de Mécanique des Fluides de Toulouse (IMFT), Université de Toulouse, CNRS, INPT, UPS, Toulouse, France.

²CNRS, I2M, UMR 5295 - Esplanade des Arts et Métiers
33405 Talence, Cedex, France.

³CEA, DEN, SEAD, Laboratoire d'Étanchéité, 30207 Bagnols-sur-Cèze, France

(Received xx; revised xx; accepted xx)

The slightly compressible flow of a gas in the slip regime within a rough fracture featuring a heterogeneous aperture field is analyzed in depth in this work. Starting from the governing Navier-Stokes, continuity and gas state-law equations together with a first order slip boundary condition at the impermeable walls of the fracture, the two-dimensional slip-corrected Reynolds model is first derived that is shown to be second order accurate in the local slope of the roughness asperities while being first order accurate in the Knudsen number. Focusing the interest on the flow-rate to pressure-gradient relationship over a representative element of the fracture, an upscaling procedure is applied to the local Reynolds equation using the method of volume averaging, providing a macroscopic model for which the momentum conservation equation has a Reynolds-like form. The effective macroscopic transmissivity tensor, that is characteristic of the representative element, is shown to be given by a closure problem that is non-intrinsic to the geometrical structure of the fracture only due to the slip effect. An expansion to the first order in the Knudsen number is carried out on the closure, yielding a decomposition of the effective transmissivity tensor into its purely viscous part and its slip-correction, both being given by the solution of intrinsic closure sub-problems. Numerical validations of the solution to the closure problem are performed with analytical predictions for simple fracture geometries. Comparison between the macroscopic transmissivity tensor, obtained from the solution of the closure problem, and its first order approximation is illustrated on a randomly rough correlated Gaussian fracture.

1. Introduction

A real rough fracture is usually characterized by a heterogeneous structure composed of aperture zones and localized contact spots. Modelling the fluid transport properties of channels having such complex topographies can be a challenging problem due to their multi-scale nature. Indeed, the domain under study can have a length-scale of the order of a few millimetres or more, while containing influential details down to the micrometre or less (Lorenz & Persson 2009; Dapp & Müser 2016). Yet, the transport properties of such fractures represent a critical issue in many industrial applications as they can determine their success or failure. For example, one can cite the flow study through fractured rocks (Berkowitz 2002; Mourzenko *et al.* 1995) for fluid recovery and for integrity of caprocks or for the leak rate determination of metal-to-metal mechanical seals (Marie *et al.* 2003; Marie & Lasseux 2007; Vallet *et al.* 2009; Ledoux *et al.* 2011; Pérez-Ràfols *et al.* 2016)

† Email address for correspondence: didier.lasseux@ensam.eu

intervening in the design of nuclear power plants or in ultra-high vacuum applications amongst many others (Lefrançois 2004).

Noticing that, in general, the typical length-scale of the roughness pattern is much smaller than the macroscopic size of the domain, many authors have thus been interested in a scale separation approach to describe an average flow model rather than a deterministic solution at the roughness scale. This was first addressed in the context of surface lubrication by splitting the problem in two scales, that is, a global scale, and a smaller one taking into consideration the details at the roughness level. Moreover, when it is assumed that the local slopes of the roughness are small, the lubrication assumption holds and the flow is described by the Reynolds equation at the microscopic scale. Interested in the effect of a one-dimensional longitudinal or transverse roughness pattern on the flow, Christensen (1970) developed a model based on statistical averaging of the Reynolds equation. Later, Patir & Cheng (1978) published a study for a more general roughness structure while taking into account the possible contact between the surfaces. This analysis resulted in the inclusion of scalar “flow factors” in the macro-scale Reynolds equation to model the effect of roughness on the flow, thus making a link between the two scales of the problem. This concept has been extended by Tripp (1983) who used a stochastic approach while Prat *et al.* (2002) made use of the method of volume averaging to obtain an averaged Reynolds equation involving a tensorial transmissivity. Such a formulation allows the description of the average flow for anisotropic roughness and basically reduces to Patir and Cheng’s model when the off-diagonal terms of the transmissivity tensor vanishes, *i.e.* when expressed in the principal axes of the fracture. Fractures in geological formation can exhibit more complex structures for which the scale separation, from the scale of asperities to that of the fracture itself is not always fulfilled. Moreover, fractures in this kind of material are often organized in complex networks (see Tsang & Tsang (1987), Lee *et al.* (2001) and references therein) requiring a careful attention for a proper description at the scale of an entire fracture or fractures network. Nevertheless, our approach developed below is restricted to the first upscaling, from the scale of asperities to that of a local element characterized by a local transmissivity, for which scale separation does not usually represent a critical constraint. In many other configurations, this constraint is even easily satisfied, as for instance in assemblies of machined surfaces. Machining operates an upper cut-off on the characteristic size of asperities so that their scale is distinctly separated from that of waviness (Stout *et al.* 1990, 2000; Stout & Blunt 2013), a sufficient requirement for this first upscaling to be applied. Further upscaling procedures, similar to the one developed here, can be envisaged to account for defaults at larger scale if appropriate.

Most of the works reported so far often concentrate on the flow of an incompressible liquid. In this work, the interest is focused on the single-phase, pressure-driven flow of a slightly compressible fluid between confined rough walls. When the aperture of the fracture is comparable to the mean free path of the fluid, rarefaction effect (or Knudsen effect) may appear, which can significantly impact the mass, momentum and heat transfer through the aperture field. The existence of this flow regime can be characterized by the value of the Knudsen number, Kn , defined as the ratio of the mean free path of the gas molecules at the pressure and temperature under consideration to a characteristic constriction length. According to Karniadakis *et al.* (2005), when $10^{-2} \lesssim Kn \lesssim 10^{-1}$, the so-called slip flow regime is reached and the Navier-Stokes equations together with the classical no-slip boundary condition fail to model the rarefied flow properly. This is circumvented by introducing a finite slip velocity at the walls while the classical mass and momentum conservation equations remain the same as in the continuum regime (*i.e.*, when $Kn \lesssim 10^{-2}$). Such a situation has been particularly studied in micro and

nanofluidic devices (Porodnov *et al.* 1974; Arkilic *et al.* 1997; Beskok & Karniadakis 1999; Dongari *et al.* 2007; Cai *et al.* 2007) or for gas flow in porous media for instance (Klinkenberg 1941; Skjetne & Auriault 1999; Lasseux *et al.* 2014, 2016). The concept of linear, or first order slip velocity boundary condition was initially introduced by Navier and later improved by Maxwell (1879). It is such that the slip velocity is tangential to the wall and proportional to the local shear rate. So as to increase the Knudsen number's range of applicability of the slip regime, second order and more general slip boundary conditions have been introduced (Karniadakis *et al.* 2005) but may result in erroneous velocity distribution along with numerical implementation difficulties (McNenly *et al.* 2005). Hence, our objective in this article is to carefully derive a macroscopic model operating at the scale of a representative elementary portion of the fracture for slightly compressible slip-flow (*i.e.* for sufficiently small values of the Knudsen number). To this end, the flow will be described by the classical continuum-based mass conservation and Navier-Stokes equations along with a Maxwell-type first order slip boundary condition at the walls.

The present paper is organized as follows. Assuming that the local slope of the fracture walls is everywhere small compared to unity, the first order slip-corrected Reynolds equation is derived in § 2, starting from the microscale Stokes and continuity equations along with a first order slip boundary condition at the walls. Then, the upscaling process is applied to the Reynolds equation in § 3, making use of the method of volume averaging and leading to the macroscopic flow model and to a closure problem that is to be solved to obtain the effective transmissivity tensor. An expansion of the closure problem at the first order in the Knudsen number is then performed to identify purely viscous and slip-correction effects separately. In § 4, numerical solutions to the closure problem, along with a comparison between the macroscopic model and its first order approximation on a randomly rough fracture are presented. The dependence of the macroscopic transmissivity tensor on the Knudsen number that appears in the average flow model is portrayed. Finally, conclusions of this study are proposed in § 5.

2. Microscale physical model

2.1. Scale analysis and simplified governing equations

The situation under consideration in this work is that of a stationary, isothermal, slightly compressible one-phase flow of a barotropic gas in a fracture made-up of two rough surfaces. Moreover, the viscous flow is assumed to occur at small Reynolds number (creeping flow) so that it can be described by the Stokes equation at the roughness level. This can be shown starting from the compressible Navier-Stokes equations and performing an order of magnitude analysis on the different terms using length-scale constraints (see (Lasseux *et al.* 2014; Quintard & Whitaker 1996) for the details). A first order slip boundary condition is assumed at the solid-fluid interface making the fluid velocity locally tangential to the wall. Such a condition takes the form of equation (2.1d) as proposed in (Lauga *et al.* 2007). Under these circumstances, while neglecting the effect of body forces, the flow can be described by the following set of equations

$$\nabla \cdot (\rho \mathbf{v}) = 0 \quad \text{in } \Omega_\beta \quad (2.1a)$$

$$-\nabla p + \mu \nabla^2 \mathbf{v} = 0 \quad \text{in } \Omega_\beta \quad (2.1b)$$

$$\rho = \varphi(p) \quad \text{in } \Omega_\beta \quad (2.1c)$$

$$\mathbf{v} = -\xi \lambda \mathbf{n} \cdot (\nabla \mathbf{v} + \nabla \mathbf{v}^T) \cdot (\mathbf{I} - \mathbf{n}\mathbf{n}) \quad \text{on } \mathcal{A}_{\sigma\beta} \quad (2.1d)$$

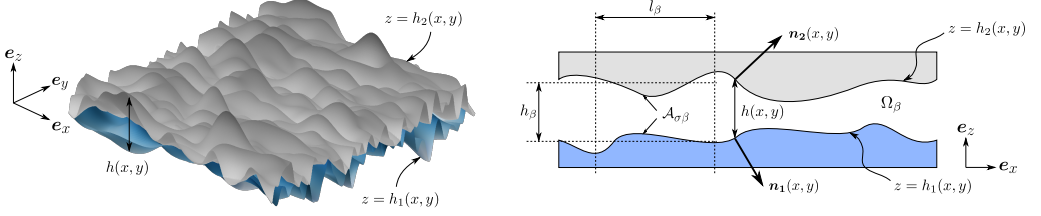


Figure 1: Fracture made of two rough surfaces and associated parameters.

In problem (2.1), Ω_β designates the fluid phase domain, $\mathcal{A}_{\sigma\beta}$ is the solid-fluid interface, ρ and p are respectively the density and pressure, μ is the dynamic viscosity that will be considered constant throughout this work (*i.e.*, the fluid is Newtonian) and \mathbf{v} is the velocity which components in the orthonormal basis $(\mathbf{e}_x, \mathbf{e}_y, \mathbf{e}_z)$ (see figure 1) are (u, v, w) . In equation (2.1d), \mathbf{I} is the identity tensor, \mathbf{n} is the unit normal vector at $\mathcal{A}_{\sigma\beta}$ pointing from the fluid-phase β toward the solid-phase σ and the superscript T represents the transpose of a second order tensor. Moreover, λ denotes the mean free path of the gas molecules at the pressure and temperature under consideration and ξ is a factor that depends on the tangential-momentum accommodation coefficient (TMAC), σ_v , as (Maxwell 1879):

$$\xi = \frac{2 - \sigma_v}{\sigma_v} \quad (2.2)$$

The TMAC was introduced by Maxwell to account for the type of molecule-to-wall reflection and is related to the tangential component of the shear stress at the wall. A value of $\sigma_v = 0$ is representative of a purely specular reflection whereas $\sigma_v = 1$ refers to a purely diffusive one. Experimentally, σ_v ranges from 0.75 to 0.85 for various gases, yielding values for ξ between 1.3 and 1.7 (Karniadakis *et al.* 2005; Arkilic *et al.* 2001; Ewart *et al.* 2007) while the TMAC seems to increase with the molar mass of the gas (Graur *et al.* 2009). For the important application of CO₂ sequestration, one finds values of σ_v in the range mentioned above or even larger (Arkilic *et al.* 2001; Agrawal & Prabhu 2008). Obviously, ξ is a factor of the order of unity and, for practical purposes, it will be considered as a constant throughout this work.

As sketched in figure 1, the fracture is composed of two rough surfaces that are both described by their height $z = h_i(x, y)$ with respect to a reference set of coordinates and their normal unit vector, that depend on the (x, y) coordinates, are denoted by $\mathbf{n}_i(x, y)$, $i = 1$ and 2 for the bottom and top surfaces respectively. Furthermore, the local aperture field is denoted by $h(x, y) = h_2(x, y) - h_1(x, y)$ which can be positive or zero if contact occurs.

If we assume that the aperture field is slowly varying with the in-plane coordinates x and y (*i.e.*, that the slope of asperities is everywhere small compared to 1), it is of interest to derive the Reynolds equation from problem (2.1). To this purpose, we introduce the following dimensionless quantities (denoted with an underline)

$$\begin{aligned} \underline{x} &= x/l_\beta, & \underline{y} &= y/l_\beta, & \underline{z} &= z/h_\beta \\ \underline{u} &= u/u_\beta, & \underline{v} &= v/v_\beta, & \underline{w} &= w/w_\beta \\ \underline{p} &= p/p_\beta, & \underline{\rho} &= \rho/\rho_\beta \end{aligned} \quad (2.3)$$

where l_β is the characteristic length-scale over which the aperture field experiences

significant variations in the (x, y) directions while h_β is the characteristic length-scale of the aperture h . In addition, u_β , v_β and w_β represent the characteristic velocity magnitudes in the x , y and z directions respectively; p_β and ρ_β are the characteristic pressure and density. Reporting these dimensionless quantities back into the continuity equation (2.1a) yields:

$$\rho_\beta \frac{u_\beta}{l_\beta} \frac{\partial(\underline{\rho u})}{\partial \underline{x}} + \rho_\beta \frac{v_\beta}{l_\beta} \frac{\partial(\underline{\rho v})}{\partial \underline{y}} + \rho_\beta \frac{w_\beta}{h_\beta} \frac{\partial(\underline{\rho w})}{\partial \underline{z}} = 0 \quad (2.4)$$

To ensure that all the terms in equation (2.4) have the same order of magnitude, following the principle of least degeneracy classical in the method of matched asymptotic expansions (Van Dyke 1975), it is required that u_β and v_β are equal and

$$\frac{w_\beta}{u_\beta} = \frac{h_\beta}{l_\beta} = \varepsilon \quad (2.5)$$

In equation (2.5) the parameter ε denotes the ratio of the normal to the in-plane characteristic length-scales (or velocity magnitudes). If we recall the small slope hypothesis, *i.e.* $h_\beta \ll l_\beta$, then ε is a small parameter compared to unity: $\varepsilon \ll 1$.

Similarly, introducing the dimensionless quantities in equation (2.1b) and making use of the definition of ε in equation (2.5) leads to the non-dimensional form of the momentum conservation equation

$$-\frac{p_\beta}{\mu} \frac{h_\beta^2}{u_\beta l_\beta} \frac{\partial \underline{p}}{\partial \underline{x}} + \varepsilon^2 \left(\frac{\partial^2 \underline{u}}{\partial \underline{x}^2} + \frac{\partial^2 \underline{u}}{\partial \underline{y}^2} \right) + \frac{\partial^2 \underline{u}}{\partial \underline{z}^2} = 0 \quad (2.6a)$$

$$-\frac{p_\beta}{\mu} \frac{h_\beta^2}{u_\beta l_\beta} \frac{\partial \underline{p}}{\partial \underline{y}} + \varepsilon^2 \left(\frac{\partial^2 \underline{v}}{\partial \underline{x}^2} + \frac{\partial^2 \underline{v}}{\partial \underline{y}^2} \right) + \frac{\partial^2 \underline{v}}{\partial \underline{z}^2} = 0 \quad (2.6b)$$

$$-\frac{p_\beta}{\mu} \frac{h_\beta}{w_\beta} \frac{\partial \underline{p}}{\partial \underline{z}} + \varepsilon^2 \left(\frac{\partial^2 \underline{w}}{\partial \underline{x}^2} + \frac{\partial^2 \underline{w}}{\partial \underline{y}^2} \right) + \frac{\partial^2 \underline{w}}{\partial \underline{z}^2} = 0 \quad (2.6c)$$

For least degeneracy, the characteristic pressure p_β must be such that all the terms in equations (2.6a) and (2.6b) are of the same order of magnitude and this is satisfied provided $p_\beta = \mu u_\beta l_\beta / h_\beta^2$. In this way, equations (2.6) can be rewritten as

$$-\frac{\partial \underline{p}}{\partial \underline{x}} + \varepsilon^2 \left(\frac{\partial^2 \underline{u}}{\partial \underline{x}^2} + \frac{\partial^2 \underline{u}}{\partial \underline{y}^2} \right) + \frac{\partial^2 \underline{u}}{\partial \underline{z}^2} = 0 \quad (2.7a)$$

$$-\frac{\partial \underline{p}}{\partial \underline{y}} + \varepsilon^2 \left(\frac{\partial^2 \underline{v}}{\partial \underline{x}^2} + \frac{\partial^2 \underline{v}}{\partial \underline{y}^2} \right) + \frac{\partial^2 \underline{v}}{\partial \underline{z}^2} = 0 \quad (2.7b)$$

$$-\frac{\partial \underline{p}}{\partial \underline{z}} + \varepsilon^4 \left(\frac{\partial^2 \underline{w}}{\partial \underline{x}^2} + \frac{\partial^2 \underline{w}}{\partial \underline{y}^2} \right) + \varepsilon^2 \frac{\partial^2 \underline{w}}{\partial \underline{z}^2} = 0 \quad (2.7c)$$

Using the fact that $\varepsilon \ll 1$, a truncation at $O(\varepsilon^2)$ yields the following form of the components of the momentum equation

$$-\frac{\partial p}{\partial x} + \frac{\partial^2 u}{\partial z^2} + O(\varepsilon^2) = 0 \quad (2.8a)$$

$$-\frac{\partial p}{\partial y} + \frac{\partial^2 v}{\partial z^2} + O(\varepsilon^2) = 0 \quad (2.8b)$$

$$-\frac{\partial p}{\partial z} + O(\varepsilon^2) = 0 \quad (2.8c)$$

or, while switching back to the dimensional form

$$-\frac{\partial p}{\partial x} + \mu \frac{\partial^2 u}{\partial z^2} + O\left(\mu \frac{u_\beta}{l_\beta^2}\right) = 0 \quad (2.9a)$$

$$-\frac{\partial p}{\partial y} + \mu \frac{\partial^2 v}{\partial z^2} + O\left(\mu \frac{u_\beta}{l_\beta^2}\right) = 0 \quad (2.9b)$$

$$-\frac{\partial p}{\partial z} + O\left(\mu \frac{u_\beta}{l_\beta h_\beta}\right) = 0 \quad (2.9c)$$

From equation (2.9c), it can be seen that the pressure is independent of the z coordinate. A double integration of equations (2.9a) and (2.9b) can thus be performed with respect to this coordinate providing the two in-plane velocity profiles

$$u = \frac{1}{2\mu} \frac{\partial p}{\partial x} (z^2 + \mathcal{I}_1 z + \mathcal{I}_2) \quad (2.10a)$$

$$v = \frac{1}{2\mu} \frac{\partial p}{\partial y} (z^2 + \mathcal{I}_3 z + \mathcal{I}_4) \quad (2.10b)$$

In these equations \mathcal{I}_i , $i = 1, 4$ are four constants which need to be determined with the boundary condition in equation (2.1d).

2.2. Slip boundary condition

We now turn our attention to the first order slip boundary condition in equation (2.1d) with the purpose of a simplification consistent with an approximation at $O(\varepsilon^2)$ in accordance with the momentum balance equation. Denoting n_{xi} , n_{yi} and n_{zi} the x , y and z components of the normal unit vector \mathbf{n}_i at the fracture wall $z = h_i$ ($i = 1, 2$) where the velocity components are u_i , v_i and w_i , the general explicit form of equation (2.1d) can be written as

$$u_i = -\xi \lambda (A_{xi} (1 - n_{xi}^2) - A_{yi} n_{xi} n_{yi} - A_{zi} n_{xi} n_{zi}) \quad (2.11a)$$

$$v_i = -\xi \lambda (-A_{xi} n_{xi} n_{yi} + A_{yi} (1 - n_{yi}^2) - A_{zi} n_{yi} n_{zi}) \quad (2.11b)$$

$$w_i = -\xi \lambda (-A_{xi} n_{xi} n_{zi} - A_{yi} n_{yi} n_{zi} + A_{zi} (1 - n_{zi}^2)) \quad (2.11c)$$

Here, A_{xi} , A_{yi} and A_{zi} are respectively defined as

$$A_{xi} = 2n_{xi} \frac{\partial u}{\partial x} + n_{yi} \left(\frac{\partial u}{\partial y} + \frac{\partial v}{\partial x} \right) + n_{zi} \left(\frac{\partial u}{\partial z} + \frac{\partial w}{\partial x} \right) \quad (2.12a)$$

$$A_{yi} = n_{xi} \left(\frac{\partial u}{\partial y} + \frac{\partial v}{\partial x} \right) + 2n_{yi} \frac{\partial v}{\partial y} + n_{zi} \left(\frac{\partial v}{\partial z} + \frac{\partial w}{\partial y} \right) \quad (2.12b)$$

$$A_{zi} = n_{xi} \left(\frac{\partial u}{\partial z} + \frac{\partial w}{\partial x} \right) + n_{yi} \left(\frac{\partial v}{\partial z} + \frac{\partial w}{\partial y} \right) + 2n_{zi} \frac{\partial w}{\partial z} \quad (2.12c)$$

where all derivatives are taken at the solid boundary $z = h_i$ ($i = 1, 2$) and where the components of \mathbf{n}_i are such that

$$\mathbf{n}_i = (-1)^{i-1} \left(1 + \left(\frac{\partial h_i}{\partial x} \right)^2 + \left(\frac{\partial h_i}{\partial y} \right)^2 \right)^{-\frac{1}{2}} \left(\frac{\partial h_i}{\partial x} \mathbf{e}_x + \frac{\partial h_i}{\partial y} \mathbf{e}_y - \mathbf{e}_z \right) \quad (2.13)$$

or, equivalently

$$\mathbf{n}_i = (-1)^{i-1} \left(1 + \varepsilon^2 \left(\frac{\partial \underline{h}_i}{\partial \underline{x}} \right)^2 + \varepsilon^2 \left(\frac{\partial \underline{h}_i}{\partial \underline{y}} \right)^2 \right)^{-\frac{1}{2}} \left(\varepsilon \frac{\partial \underline{h}_i}{\partial \underline{x}} \mathbf{e}_x + \varepsilon \frac{\partial \underline{h}_i}{\partial \underline{y}} \mathbf{e}_y - \mathbf{e}_z \right) \quad (2.14)$$

Inserting these expressions into equations (2.12) yields

$$A_{xi} = \varepsilon N_i \frac{u_\beta}{l_\beta} \left\{ 2 \frac{\partial \underline{h}_i}{\partial \underline{x}} \frac{\partial \underline{u}}{\partial \underline{x}} + \frac{\partial \underline{h}_i}{\partial \underline{y}} \left(\frac{\partial \underline{u}}{\partial \underline{y}} + \frac{\partial \underline{v}}{\partial \underline{x}} \right) - \frac{\partial \underline{w}}{\partial \underline{x}} - \frac{1}{\varepsilon^2} \frac{\partial \underline{u}}{\partial \underline{z}} \right\} \quad (2.15a)$$

$$A_{yi} = \varepsilon N_i \frac{u_\beta}{l_\beta} \left\{ \frac{\partial \underline{h}_i}{\partial \underline{x}} \left(\frac{\partial \underline{u}}{\partial \underline{y}} + \frac{\partial \underline{v}}{\partial \underline{x}} \right) + 2 \frac{\partial \underline{h}_i}{\partial \underline{y}} \frac{\partial \underline{v}}{\partial \underline{y}} - \frac{\partial \underline{w}}{\partial \underline{y}} - \frac{1}{\varepsilon^2} \frac{\partial \underline{v}}{\partial \underline{z}} \right\} \quad (2.15b)$$

$$A_{zi} = \varepsilon^3 N_i \frac{u_\beta}{h_\beta} \left\{ \frac{\partial \underline{h}_i}{\partial \underline{x}} \left(\frac{1}{\varepsilon^2} \frac{\partial \underline{u}}{\partial \underline{z}} + \frac{\partial \underline{w}}{\partial \underline{x}} \right) + \frac{\partial \underline{h}_i}{\partial \underline{y}} \left(\frac{1}{\varepsilon^2} \frac{\partial \underline{v}}{\partial \underline{z}} + \frac{\partial \underline{w}}{\partial \underline{y}} \right) - \frac{2}{\varepsilon^2} \frac{\partial \underline{w}}{\partial \underline{z}} \right\} \quad (2.15c)$$

with $N_i = (-1)^{i-1} \left(1 + \varepsilon^2 \left(\frac{\partial \underline{h}_i}{\partial \underline{x}} \right)^2 + \varepsilon^2 \left(\frac{\partial \underline{h}_i}{\partial \underline{y}} \right)^2 \right)^{-\frac{1}{2}}$. Since $\varepsilon \ll 1$, $N_i = (-1)^{i-1} + O(\varepsilon^2)$ so that, at $O(\varepsilon^2)$, equations (2.15) can be simplified to give

$$A_{xi} = (-1)^i \frac{u_\beta}{h_\beta} \frac{\partial \underline{u}}{\partial \underline{z}} + O\left(\varepsilon^2 \frac{u_\beta}{h_\beta}\right) \quad (2.16a)$$

$$A_{yi} = (-1)^i \frac{u_\beta}{h_\beta} \frac{\partial \underline{v}}{\partial \underline{z}} + O\left(\varepsilon^2 \frac{u_\beta}{h_\beta}\right) \quad (2.16b)$$

$$A_{zi} = (-1)^{i-1} \varepsilon \frac{u_\beta}{h_\beta} \left\{ \frac{\partial \underline{h}_i}{\partial \underline{x}} \frac{\partial \underline{u}}{\partial \underline{z}} + \frac{\partial \underline{h}_i}{\partial \underline{y}} \frac{\partial \underline{v}}{\partial \underline{z}} - 2 \frac{\partial \underline{w}}{\partial \underline{z}} \right\} + O\left(\varepsilon^3 \frac{u_\beta}{h_\beta}\right) \quad (2.16c)$$

Once reported in equations (2.11), the dimensionless slip velocity components at $z = h_i$ can be hence approximated at $O(\varepsilon^2 \xi Kn)$ by

$$\underline{u}_i = (-1)^{i-1} \xi Kn \frac{\partial \underline{u}}{\partial \underline{z}} + O(\varepsilon^2 \xi Kn) \quad (2.17a)$$

$$\underline{v}_i = (-1)^{i-1} \xi Kn \frac{\partial \underline{v}}{\partial \underline{z}} + O(\varepsilon^2 \xi Kn) \quad (2.17b)$$

$$\underline{w}_i = (-1)^{i-1} \xi Kn \left(\frac{\partial \underline{h}_i}{\partial \underline{x}} \frac{\partial \underline{u}}{\partial \underline{z}} + \frac{\partial \underline{h}_i}{\partial \underline{y}} \frac{\partial \underline{v}}{\partial \underline{z}} \right) + O(\varepsilon^2 \xi Kn) \quad (2.17c)$$

where Kn denotes the Knudsen number defined by

$$Kn = \lambda / h_\beta \quad (2.18)$$

It must be noted that, due to the fact that ξKn remains smaller than unity in the context of slip flow, this approximation is consistent with that derived so far at $O(\varepsilon^2)$.

In the dimensional form, this yields, at $z = h_i$ ($i = 1, 2$)

$$u_i = (-1)^{i-1} \xi \lambda \frac{\partial u}{\partial z} + O(\varepsilon^2 \xi Kn u_\beta) \quad (2.19a)$$

$$v_i = (-1)^{i-1} \xi \lambda \frac{\partial v}{\partial z} + O(\varepsilon^2 \xi Kn u_\beta) \quad (2.19b)$$

$$w_i = (-1)^{i-1} \xi \lambda \varepsilon \left(\frac{\partial h_i}{\partial x} \frac{\partial u}{\partial z} + \frac{\partial h_i}{\partial y} \frac{\partial v}{\partial z} \right) + O(\varepsilon^3 \xi Kn u_\beta) \quad (2.19c)$$

As expected, equation (2.19c) clearly indicates that the vertical velocity w_i is smaller than the in-plane velocities u_i and v_i ($i = 1, 2$) by a factor ε . Under the small slopes hypothesis, the first order boundary condition (2.1d) simplifies to equations (2.19) at the bottom and top surfaces, and this justifies the form put forth without formal demonstration by Burgdorfer (1959) in a study of gas lubricated bearings.

2.3. Local Reynolds equation

To complete the flow solution, the constants of integration Υ_i ($i = 1, 4$) in equations (2.10) may be determined by making use of the relationships in equations (2.19a) and (2.19b). Solving the system of equations for Υ_i yields the expressions of the in-plane parabolic velocity profiles

$$u = \frac{1}{2\mu} \frac{\partial p}{\partial x} (z^2 - (h_1 + h_2)z + h_1 h_2 + \xi \lambda (h_1 - h_2)) \quad (2.20a)$$

$$v = \frac{1}{2\mu} \frac{\partial p}{\partial y} (z^2 - (h_1 + h_2)z + h_1 h_2 + \xi \lambda (h_1 - h_2)) \quad (2.20b)$$

At this point, the aim is to reduce the flow model from its original 3D form to an equivalent 2D version which is $O(\varepsilon^2 \xi Kn)$. Recalling that the fluid is considered as barotropic, (equation (2.1c)) and that the pressure is independent of the z coordinate

(equation (2.9c)), the mass flow rate per unit width of the fracture can be obtained by integrating the mass flux across the aperture, which gives

$$q_x = \int_{h_1}^{h_2} \rho(x, y) u(x, y, z) dz = -\rho \frac{h^3}{12\mu} \left(1 + 6 \frac{\xi\lambda}{h} \right) \frac{\partial p}{\partial x} \quad (2.21a)$$

$$q_y = \int_{h_1}^{h_2} \rho(x, y) v(x, y, z) dz = -\rho \frac{h^3}{12\mu} \left(1 + 6 \frac{\xi\lambda}{h} \right) \frac{\partial p}{\partial y} \quad (2.21b)$$

where $h = h_2 - h_1$. Letting $\mathbf{q} = q_x \mathbf{e}_x + q_y \mathbf{e}_y$, this can be written in a vectorial 2D form as

$$\mathbf{q} = -\rho \frac{h^3}{12\mu} \left(1 + 6 \frac{\xi\lambda}{h} \right) \nabla p \quad (2.22)$$

The continuity equation (2.1a) can also be integrated in the z -direction across the aperture to give

$$\int_{h_1}^{h_2} \frac{\partial(\rho u)}{\partial x} dz + \int_{h_1}^{h_2} \frac{\partial(\rho v)}{\partial y} dz + \int_{h_1}^{h_2} \frac{\partial(\rho w)}{\partial z} dz = 0 \quad (2.23)$$

Using the definition of the mass flow rate per unit fracture width used in equations (2.21) and the Leibniz's rule, one obtains

$$\begin{aligned} \int_{h_1}^{h_2} \frac{\partial(\rho u)}{\partial x} dz + \int_{h_1}^{h_2} \frac{\partial(\rho v)}{\partial y} dz + \int_{h_1}^{h_2} \frac{\partial(\rho w)}{\partial z} dz &= \frac{\partial q_x}{\partial x} + \rho u_1 \frac{\partial h_1}{\partial x} - \rho u_2 \frac{\partial h_2}{\partial x} \\ &+ \frac{\partial q_y}{\partial y} + \rho v_1 \frac{\partial h_1}{\partial y} - \rho v_2 \frac{\partial h_2}{\partial y} \\ &+ \rho w_2 - \rho w_1 \end{aligned} \quad (2.24)$$

This can be written in a more compact form as (we use Einstein's notation)

$$\frac{\partial q_x}{\partial x} + \frac{\partial q_y}{\partial y} + \rho \mathbf{v}_i \cdot \mathbf{m}_i = 0, \quad i = 1, 2 \quad (2.25)$$

where

$$\mathbf{v}_i = u_i \mathbf{e}_x + v_i \mathbf{e}_y + w_i \mathbf{e}_z, \quad \mathbf{m}_i = (-1)^{i-1} \left(\frac{\partial h_i}{\partial x} \mathbf{e}_x + \frac{\partial h_i}{\partial y} \mathbf{e}_y - \mathbf{e}_z \right), \quad i = 1, 2 \quad (2.26)$$

Because \mathbf{v}_i is tangential at the surface $z = h_i$ ($i = 1, 2$) while \mathbf{m}_i is proportional to the normal vector \mathbf{n}_i at this surface (see equation (2.13)), the integrated mass conservation equation (2.23) reduces to

$$\frac{\partial q_x}{\partial x} + \frac{\partial q_y}{\partial y} = \nabla \cdot \mathbf{q} = 0 \quad (2.27)$$

This result is exact at any order of ε and $\xi K n$ as it was directly derived from equation

(2.1d). The same result could have been obtained at $O(\varepsilon^2 \xi Kn)$ by replacing equations (2.19) in equation (2.24).

The original boundary-value problem (2.1) is now reduced from a 3D form to a 2D one in the (x, y) plane. If \mathcal{A}_β designates the 2D region occupied by the fluid phase and \mathcal{A}_σ the 2D region corresponding to the solid phase, *i.e.* the contact zones, the flow problem in equations (2.1) can be equivalently formulated in the following version, that is second order accurate in the local slope of the wall roughness and first order accurate in the Knudsen number, as

$$\nabla \cdot \mathbf{q} = 0 \quad \text{in } \mathcal{A}_\beta \quad (2.28a)$$

$$\mathbf{q} = -\rho \frac{h^3}{12\mu} \left(1 + 6 \frac{\xi \lambda}{h} \right) \nabla p \quad \text{in } \mathcal{A}_\beta \quad (2.28b)$$

$$\rho = \varphi(p) \quad \text{in } \mathcal{A}_\beta \quad (2.28c)$$

$$\mathbf{q} \cdot \mathbf{n}_{\sigma\beta} = 0 \quad \text{on } \mathcal{C}_{\sigma\beta} \quad (2.28d)$$

In the boundary condition of equation (2.28d), $\mathbf{n}_{\sigma\beta}$ is the normal unit vector to the contours $\mathcal{C}_{\sigma\beta}$ of \mathcal{A}_σ in the $(\mathbf{e}_x, \mathbf{e}_y)$ plane, pointing from the fluid phase toward the solid phase. This boundary condition refers to the impermeability of the contact zones when they exist.

Equations (2.28b) and (2.28a) form the Reynolds model of a pressure driven slip flow. The local transmissivity is identified as $\frac{h^3}{12} \left(1 + 6 \frac{\xi \lambda}{h} \right)$ where the second term in the parentheses reflects the correction for slip flow in which λ/h can be viewed as the local Knudsen number. This term vanishes to obtain the Reynolds flow model with a classical local transmissivity $h^3/12$ for a slightly compressible or incompressible flow in the absence of slip at the solid-fluid interfaces (Vallet *et al.* 2009; Szeri 1998).

3. Upscaling of the Reynolds flow model

The boundary-value problem (2.28) describes the viscous slip flow at the roughness scale. The interest is now to derive a macroscopic flow model that relates the macroscopic mass flow rate per unit width at the scale of a Representative Elementary Surface (RES), to the macroscopic pressure gradient. To do so, we make use of a formalism completely similar to the volume averaging method (Whitaker 1999). Averaging is performed over a domain \mathcal{S} of surface S and radius r_0 that is a sample of the entire fracture of dimension L_0 as shown in figure 2. The fluid phase β within this averaging domain occupies a region \mathcal{S}_β of surface S_β . For any given quantity ψ defined in \mathcal{S}_β , two distinct averages may be used (Whitaker 1999), namely the superficial average, which can be expressed as

$$\langle \psi \rangle = \frac{1}{S} \int_{S_\beta} \psi \, dS \quad (3.1)$$

and the intrinsic average, which is defined by

$$\langle \psi \rangle^\beta = \frac{1}{S_\beta} \int_{S_\beta} \psi \, dS \quad (3.2)$$

When the superficial average is applied to the problem given by equations (2.28) with the purpose of obtaining a macroscopic model involving averaged quantities only, spatial

differentiation and averaging operators need to be inverted. This is achieved by making use of the spatial averaging theorem, a special form of the Leibniz rule, which, for the gradient of a scalar quantity, yields (Howes & Whitaker 1985)

$$\langle \nabla \psi \rangle = \nabla \langle \psi \rangle + \frac{1}{S} \int_{\mathcal{C}_{\sigma\beta}} \psi \mathbf{n}_{\sigma\beta} dl \quad (3.3)$$

and a similar version for the divergence operator.

As for any upscaling process, the development of the macroscopic model relies on the hypothesis of a scale separation, namely

$$l_\beta \ll r_0 \ll L_0 \quad (3.4)$$

The scale L_0 in the above relationship is used, for the sake of simplicity in the presentation, as the scale of the fracture itself while assuming it remains homogeneous, *i.e.* that no other scale is involved in the flow process. This is not always the case in practice, and to be more precise, L_0 should be understood as the length-scale of defaults of characteristic size immediately larger than l_β . In the remainder of this article, this hierarchy expressed in (3.4) is assumed, a constraint that is usually not too difficult to satisfy, except maybe for some fracture patterns in natural geological media. Under these circumstances, a spatial decomposition on ψ can be performed according to (Gray 1975)

$$\psi = \langle \psi \rangle^\beta + \tilde{\psi} \quad (3.5)$$

The quantity $\tilde{\psi}$ refers to the spatial deviation of ψ from its average value and has a length-scale of variation l_β (*i.e.* the roughness scale) while the characteristic length-scale of variation for the average quantity $\langle \psi \rangle^\beta$ is of the order of L_0 (see figure 2). If the scale hierarchy expressed in (3.4) is fulfilled, it can be shown (Whitaker 1999) that the intrinsic average exhibits negligible variations within the RES, which means

$$\left\langle \langle \psi \rangle^\beta \right\rangle^\beta \approx \langle \psi \rangle^\beta \quad (3.6)$$

and this implies

$$\left\langle \tilde{\psi} \right\rangle^\beta \approx 0 \quad (3.7)$$

3.1. Volume averaging and unclosed macroscopic model

The derivation of the macroscale slip flow model from equations (2.28) starts with the application of the superficial average operator to the continuity equation (2.28a). Making use of the spatial averaging theorem, this leads to

$$\langle \nabla \cdot \mathbf{q} \rangle = \nabla \cdot \langle \mathbf{q} \rangle + \frac{1}{S} \int_{\mathcal{C}_{\sigma\beta}} \mathbf{q} \cdot \mathbf{n}_{\sigma\beta} dl = 0 \quad (3.8)$$

When the boundary condition in equation (2.28d) is taken into account, this readily gives

$$\nabla \cdot \langle \mathbf{q} \rangle = 0 \quad (3.9)$$

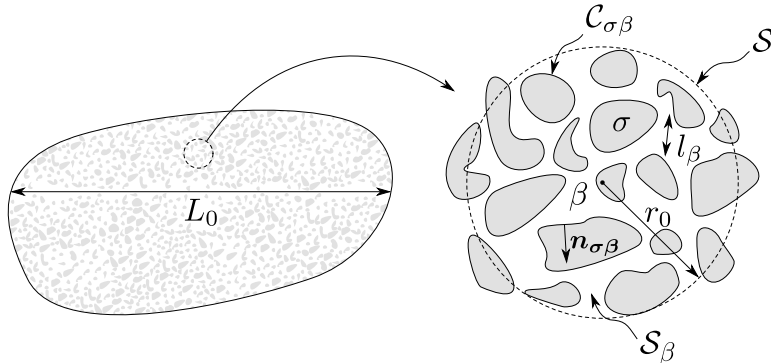


Figure 2: Macroscopic region and averaging surface of the fracture including the fluid phase β and contact zones σ .

The attention can now be focused on the average of equation (2.28b), and a careful attention must be first paid to the mean free path present in this expression of the mass flow rate. If molecular collisions are assumed to be represented by pair collisions between hard spheres, λ depends on the inverse of the gas density according to (Loeb 2004)

$$\lambda = \frac{M}{\pi\sqrt{2}\delta^2\mathcal{N}_A\rho} \quad (3.10)$$

In this expression, M is the molar mass of the gas, \mathcal{N}_A is the Avogadro number and δ denotes the effective collision diameter of gas molecules. In many situations of practical interest, the flow can be considered as slightly compressible at the scale of the RES which means that the variations of the fluid-phase density remain small compared to the average density at the scale r_0 , even though ρ can exhibit significant variations at the macroscopic scale L_0 . This assumption is adopted in the remainder of this work through the constraint (Lasseux *et al.* 2014; Quintard & Whitaker 1996)

$$\tilde{\rho} \ll \langle \rho \rangle^\beta \quad (3.11)$$

With this hypothesis and from the decomposition of ρ (see equation (3.5)), λ can be considered as a constant at the scale r_0 so that its average, denoted $\bar{\lambda}$, is simplified to the following expression (Lasseux *et al.* 2014, 2016)

$$\bar{\lambda} = \frac{M}{\pi\sqrt{2}\delta^2\mathcal{N}_A\langle \rho \rangle^\beta} \approx \lambda \quad \text{on the RES} \quad (3.12)$$

The averaging process can now be continued and when the superficial average of (2.28b) is formed while taking into account the slightly compressible assumption, one obtains

$$\langle \mathbf{q} \rangle = -\langle \rho \rangle^\beta \frac{1}{12\mu} \langle k \nabla p \rangle \quad (3.13)$$

where k is given by

$$k = h^3 + \alpha h^2 \quad (3.14)$$

and

$$\alpha = 6\xi\bar{\lambda} \quad (3.15)$$

Equation (3.13) represents the unclosed form of the average mass flow rate per unit width as it involves the pressure gradient at the roughness scale l_β .

Before switching to the closure, the gas state law has to be expressed in its macroscopic form. Due to the slightly compressible hypothesis, it can be easily shown that the average of equation (2.1c) yields (see section III. C in Lasseux *et al.* (2014))

$$\langle \rho \rangle^\beta = \varphi(\langle p \rangle^\beta) \quad (3.16)$$

3.2. Closure problem

To progress toward a closed form of the macroscopic flow model, equations (3.13) and (3.9) may be combined and when the result is subtracted from the analogue combination of equations (2.28b) and (2.28a) together with the slightly compressible assumption, one obtains

$$\nabla \cdot \left(\langle \rho \rangle^\beta \{ k \nabla p - \langle k \nabla p \rangle \} \right) = 0 \quad (3.17)$$

When the pressure decomposition as defined by equation (3.5) is further employed, this last expression takes the form

$$\nabla \cdot \left(\langle \rho \rangle^\beta \left\{ k^* \nabla \langle p \rangle^\beta + k \nabla \tilde{p} - \langle k \nabla \tilde{p} \rangle \right\} \right) = 0 \quad (3.18)$$

with

$$k^* = k - \langle k \rangle \quad (3.19)$$

In equation (3.18), $\nabla \langle p \rangle^\beta$ was treated as a constant within the averaging surface and was thus taken out of the averaging operator. This is justified by the constraint $r_0 \ll L_{p1}$ where L_{p1} represents the characteristic length-scale over which the first derivative of the average pressure exhibits significant variations (see Whitaker (1999)). Since L_{p1} is expected to be of the same order as L_0 , this constraint is equivalent to (3.4).

Equation (3.18) can now be simplified by performing an order of magnitude analysis. Directing our attention to the boundary condition in equation (2.28d) which can be written as

$$\nabla \tilde{p} \cdot \mathbf{n}_{\sigma\beta} = -\nabla \langle p \rangle^\beta \cdot \mathbf{n}_{\sigma\beta} \quad (3.20)$$

the following order of magnitude estimate for \tilde{p} is obtained

$$\tilde{p} = O\left(\frac{l_\beta \langle p \rangle^\beta}{L_p}\right) \quad (3.21)$$

In equation (3.21), the characteristic length-scales of variation of \tilde{p} and $\langle p \rangle^\beta$ were respectively taken as l_β and L_p , with the idea that $L_p \sim L_0$. On this basis, the order of magnitude of the last two terms on the left-hand side (*lhs*) of equation (3.18) can be expressed as

$$\nabla \cdot \left(\langle \rho \rangle^\beta k \nabla \tilde{p} \right) = O\left(\frac{\langle \rho \rangle^\beta k \langle p \rangle^\beta}{l_\beta L_p}\right) \quad (3.22)$$

$$\nabla \cdot \left(\langle \rho \rangle^\beta \langle k \nabla \tilde{p} \rangle \right) = O \left(\frac{\langle \rho \rangle^\beta k \langle p \rangle^\beta}{L_0 L_p} \right) \quad (3.23)$$

Due to the scale hierarchy (see relation (3.4)), the last term on the *lhs* of equation (3.18) can be neglected and this yields

$$\langle \rho \rangle^\beta \nabla k^* \cdot \nabla \langle p \rangle^\beta + k^* \nabla \cdot \left(\langle \rho \rangle^\beta \nabla \langle p \rangle^\beta \right) + \langle \rho \rangle^\beta \nabla \cdot (k \nabla \tilde{p}) + k \nabla \tilde{p} \cdot \nabla \langle \rho \rangle^\beta = 0 \quad (3.24)$$

Again, an order of magnitude analysis can be performed to estimate each of the terms of this last expression and this gives

$$\langle \rho \rangle^\beta \nabla k^* \cdot \nabla \langle p \rangle^\beta = O \left(\frac{\langle \rho \rangle^\beta k^* \langle p \rangle^\beta}{L_p l_\beta} \right) \quad (3.25)$$

$$k^* \nabla \cdot \left(\langle \rho \rangle^\beta \nabla \langle p \rangle^\beta \right) = O \left(\frac{\langle \rho \rangle^\beta k^* \langle p \rangle^\beta}{L_p L_0} \right) \quad (3.26)$$

$$\langle \rho \rangle^\beta \nabla \cdot (k \nabla \tilde{p}) = O \left(\frac{\langle \rho \rangle^\beta k \tilde{p}}{l_\beta^2} \right) \quad (3.27)$$

$$k \nabla \tilde{p} \cdot \nabla \langle \rho \rangle^\beta = O \left(\frac{\langle \rho \rangle^\beta k \tilde{p}}{L_\rho l_\beta} \right) \quad (3.28)$$

For the last term, L_ρ was used to designate the characteristic length of variation of $\langle \rho \rangle^\beta$, with again $L_\rho \sim L_0$. The same argument of scale hierarchy (*i.e.* $l_\beta \ll L_0$) can be invoked to conclude that the second and fourth terms on the *lhs* of expression (3.24) are negligible. Consequently, equation (3.17) finally takes the following simplified form

$$\nabla k^* \cdot \nabla \langle p \rangle^\beta + \nabla \cdot (k \nabla \tilde{p}) = 0 \quad (3.29)$$

Equation (3.29) together with the associated boundary condition given by equation (3.20) form the closure problem although additional external boundary conditions are still required. Nevertheless, it should be clear that the goal is not to solve the closure problem over the entire structure. Instead, it can be solved on a portion that contains all the structural information, (*i.e.* a RES) allowing a pseudo periodic representation of the whole fracture while applying a periodic boundary condition on the pressure deviation \tilde{p} on the RES. Such a condition can be written as

$$\tilde{p}(\mathbf{x} + \mathbf{\Pi}_i) = \tilde{p}(\mathbf{x}), \quad i = x, y \quad (3.30)$$

where \mathbf{x} is a position vector locating any point in the averaging surface and $\mathbf{\Pi}_i$ represents the two lattice vectors required to describe the spatially periodic rough structure. The local closure problem for \tilde{p} can hence be stated as

$$\nabla \cdot (k \nabla \tilde{p}) = -\nabla k^* \cdot \nabla \langle p \rangle^\beta \quad \text{in } \mathcal{S}_\beta \quad (3.31a)$$

$$\nabla \tilde{p} \cdot \mathbf{n}_{\sigma\beta} = -\nabla \langle p \rangle^\beta \cdot \mathbf{n}_{\sigma\beta} \quad \text{on } \mathcal{C}_{\sigma\beta} \quad (3.31b)$$

$$\tilde{p}(\mathbf{x} + \mathbf{\Pi}_i) = \tilde{p}(\mathbf{x}) \quad i = x, y \quad (3.31c)$$

Since this problem on \tilde{p} is linear, the solution can be sought as a linear combination of the sources that make it non-homogeneous. Here, $\nabla\langle p \rangle^\beta$ acts as the unique source term and the pressure deviation field can hence be determined with the following representation

$$\tilde{p} = \mathbf{b} \cdot \nabla\langle p \rangle^\beta + \gamma \quad (3.32)$$

Here, \mathbf{b} is the closure vector while γ is an arbitrary function. Substituting the representation (3.32) into equations (3.31) and keeping in mind that γ is arbitrary, \mathbf{b} can be chosen to obey the following boundary value problem

$$\nabla \cdot (k \nabla \mathbf{b}) = -\nabla k^* \quad \text{in } \mathcal{S}_\beta \quad (3.33a)$$

$$\mathbf{n}_{\sigma\beta} \cdot \nabla \mathbf{b} = -\mathbf{n}_{\sigma\beta} \quad \text{on } \mathcal{C}_{\sigma\beta} \quad (3.33b)$$

$$\mathbf{b}(\mathbf{x} + \mathbf{\Pi}_i) = \mathbf{b}(\mathbf{x}) \quad i = x, y \quad (3.33c)$$

With such a choice for the closure problem on \mathbf{b} , it can be shown that γ is a constant, which thus has no impact on the final macroscopic model. The proof is provided in appendix A. The closure procedure can now be completed by expressing the macroscopic model as detailed in the next section.

3.3. Macroscopic flow model

The pressure decomposition together with the deviation representation (equation (3.32)) can now be introduced in equation (3.13) to obtain the closed macroscopic expression of the mass flow rate per unit width of the fracture as

$$\langle \mathbf{q} \rangle = -\langle \rho \rangle^\beta \frac{1}{12\mu} \left\langle k \nabla\langle p \rangle^\beta + k \nabla(\mathbf{b} \cdot \nabla\langle p \rangle^\beta) \right\rangle \quad (3.34)$$

or, since $\nabla\langle p \rangle^\beta$ can be treated as a constant at the scale of the RES

$$\langle \mathbf{q} \rangle = -\langle \rho \rangle^\beta \frac{1}{12\mu} \langle k (\mathbf{I} + \nabla \mathbf{b}) \rangle \cdot \nabla\langle p \rangle^\beta \quad (3.35)$$

As a summary, the macroscopic Reynolds model for slightly compressible slip flow in a fracture is given by

$$\nabla \cdot \langle \mathbf{q} \rangle = 0 \quad (3.36a)$$

$$\langle \mathbf{q} \rangle = -\langle \rho \rangle^\beta \frac{\mathbf{K}}{\mu} \cdot \nabla\langle p \rangle^\beta \quad (3.36b)$$

$$\langle \rho \rangle^\beta = \varphi(\langle p \rangle^\beta) \quad (3.36c)$$

where \mathbf{K} is the macroscopic transmissivity tensor defined as

$$\mathbf{K} = \frac{1}{12} \langle k (\mathbf{I} + \nabla \mathbf{b}) \rangle \quad (3.37)$$

The macroscopic transmissivity tensor is entirely determined from the solution of the closure problem of equations (3.33) on \mathbf{b} . It should be noted that this problem defines \mathbf{b} to within an additive constant which has however no impact on \mathbf{K} . Moreover, the closure problem is not intrinsic as it does not only depend on the local aperture of the fracture but also on the average density $\langle \rho \rangle^\beta$ (or on the reference mean free path $\bar{\lambda}$)

which is implicitly present in k , featuring a non intrinsic tensor \mathbf{K} . The transmissivity tensor can be shown to be symmetric regardless the aperture field structure (Lasseux & Valdes Parada 2017).

3.4. Decomposition of the closure

As indicated in the previous section, the closure problem on \mathbf{b} is not intrinsic and yields a transmissivity tensor \mathbf{K} lumping together viscous and slip effects. In order to exhibit the particular role of the slip at the fracture walls, a further development of the closure problem is carried out.

Let us first reformulate equation (3.33a) by introducing the decomposition of k given in the relationship (3.19) to obtain

$$\nabla \cdot (k \{\mathbf{I} + \nabla \mathbf{b}\}) = 0 \quad (3.38)$$

To arrive at this result, we have used the fact that k^* and $\langle k \rangle$ are of the same order of magnitude along with the length-scale contrast $l_\beta \ll L_0$ so that $\nabla \langle k \rangle \ll \nabla k^*$. The closure problem is now rewritten in a dimensionless form as

$$\underline{\nabla} \cdot (\underline{k} \{\mathbf{I} + \underline{\nabla} \mathbf{b}\}) = 0 \quad \text{in } \mathcal{S}_\beta \quad (3.39a)$$

$$\mathbf{n}_{\sigma\beta} \cdot (\mathbf{I} + \underline{\nabla} \mathbf{b}) = 0 \quad \text{on } \mathcal{C}_{\sigma\beta} \quad (3.39b)$$

$$\underline{\mathbf{b}}(\underline{\mathbf{x}} + \underline{\mathbf{II}}_i) = \underline{\mathbf{b}}(\underline{\mathbf{x}}) \quad i = x, y \quad (3.39c)$$

where dimensionless quantities are given by

$$\begin{aligned} \underline{h} &= h/h_\beta, & \underline{k} &= k/h_\beta^3, & \underline{\mathbf{K}} &= \mathbf{K}/h_\beta^3 \\ \underline{\nabla} &= l_\beta \nabla, & \underline{\mathbf{b}} &= \mathbf{b}/l_\beta \end{aligned} \quad (3.40)$$

As before, h_β is the characteristic aperture of the fracture over the RES and l_β is the characteristic roughness length-scale. In addition, the Knudsen number \overline{Kn} associated with the reference mean free path $\bar{\lambda}$ is defined as

$$\overline{Kn} = \bar{\lambda}/h_\beta \quad (3.41)$$

on which \underline{k} explicitly depends according to

$$\underline{k} = \underline{h}^3 + 6\xi \overline{Kn} \underline{h}^2 \quad (3.42)$$

The macroscopic dimensionless transmissivity tensor has the following expression

$$\underline{\mathbf{K}} = \frac{1}{12} \langle \underline{k} (\mathbf{I} + \underline{\nabla} \mathbf{b}) \rangle \quad (3.43)$$

Since the value of $\xi \overline{Kn}$ is constrained to remain smaller than unity in the slip regime (Karniadakis *et al.* 2005), the dimensionless closure variable $\underline{\mathbf{b}}$ may be expanded as a power series of this parameter under the form

$$\underline{\mathbf{b}} = \underline{\mathbf{b}}_0 + 6\xi \overline{Kn} \underline{\mathbf{b}}_1 + (6\xi \overline{Kn})^2 \underline{\mathbf{b}}_2 + \dots \quad (3.44)$$

where each dimensionless closure variable $\underline{\mathbf{b}}_i$ at the i th order is defined as

$$\underline{\mathbf{b}}_i = \frac{h_\beta^i}{l_\beta} \mathbf{b}_i \quad (3.45)$$

When the expansion in equation (3.44) along with the expression in equation (3.42) are introduced back into equations (3.39), the original problem can be split into two intrinsic but coupled closure sub-problems at successive orders in $\xi \bar{K} n$. Returning to the dimensional form and restricting our analysis to the first order, one obtains

Zeroth order sub-problem

$$\nabla \cdot (h^3 \{I + \nabla b_0\}) = 0 \quad \text{in } \mathcal{S}_\beta \quad (3.46a)$$

$$n_{\sigma\beta} \cdot (I + \nabla b_0) = 0 \quad \text{on } \mathcal{C}_{\sigma\beta} \quad (3.46b)$$

$$b_0(x + \Pi_i) = b_0(x) \quad i = x, y \quad (3.46c)$$

First order sub-problem

$$\nabla \cdot (h^3 \nabla b_1) = -\nabla \cdot (h^2 \{I + \nabla b_0\}) \quad \text{in } \mathcal{S}_\beta \quad (3.47a)$$

$$n_{\sigma\beta} \cdot \nabla b_1 = 0 \quad \text{on } \mathcal{C}_{\sigma\beta} \quad (3.47b)$$

$$b_1(x + \Pi_i) = b_1(x) \quad i = x, y \quad (3.47c)$$

Similarly, introducing the relationships (3.42) and (3.44) into equation (3.43) allows to write the dimensionless transmissivity tensor at the desired order in $\xi \bar{K} n$. Under a dimensional form and at the first order, this writes

$$K \approx K_0 (I + \alpha S) \quad (3.48)$$

where K_0 is the intrinsic transmissivity tensor defined as

$$K_0 = \frac{1}{12} \langle h^3 (I + \nabla b_0) \rangle \quad (3.49)$$

and S is the intrinsic first order slip correction tensor which expression is given by

$$S = \frac{1}{12} K_0^{-1} \langle h^2 (I + \nabla b_0) + h^3 \nabla b_1 \rangle \quad (3.50)$$

The solution of the two above sub-problems for b_0 and b_1 on the RES provides K_0 and S yielding a linear approximation of K in terms of the slip parameter α defined in equation (3.15). It should be noted that the zeroth order sub-problem exactly corresponds to that obtained while upscaling an incompressible Reynolds flow without slip at the solid-fluid boundary in a rough fracture (Vallet *et al.* 2009; Prat *et al.* 2002) yielding the intrinsic transmissivity tensor K_0 which is a signature of viscous effects only.

The first order approximation (3.48) of the macroscopic transmissivity tensor can be viewed as an analogue of the tensorial Klinkenberg apparent permeability (Klinkenberg 1941) for gas slip-flow in a two-dimensional porous medium. Indeed, the expression of the reference mean free path $\bar{\lambda}$ in equation (3.12), which depends on the inverse of the average density $\langle \rho \rangle^\beta$, takes the following form if the gas obeys an ideal gas law and the flow is quasi isothermal (*i.e.* $\langle T \rangle^\beta \gg \tilde{T}$) (Cercignani 1988)

$$\bar{\lambda} = \frac{\mu}{\langle p \rangle^\beta} \sqrt{\frac{\pi R \langle T \rangle^\beta}{2M}} \quad (3.51)$$

where R is the ideal gas constant. Inserting this last expression into equation (3.48)

allows to write the first order approximation of \mathbf{K} as a function of the inverse average pressure in a classical Klinkenberg-like formulation (Lasseux *et al.* 2014)

$$\mathbf{K} \approx \mathbf{K}_0 \left(I + \frac{1}{\langle p \rangle^\beta} \mathbf{B} \right) \quad (3.52)$$

\mathbf{B} being the two-dimensional tensorial Klinkenberg coefficient defined as

$$\mathbf{B} = 6\xi\mu \sqrt{\frac{\pi R \langle T \rangle^\beta}{2M}} \mathbf{S} \quad (3.53)$$

4. Numerical solutions to the closure problems

4.1. Validation on simple geometries

In this section, a numerical validation of the macroscopic flow model (3.36) is illustrated on simple aperture fields for which the complete macroscopic transmissivity tensor can be determined analytically from the local transmissivities in equation (2.28b) and compared to that obtained from the solution of the closure problem given by equations (3.33). In the general case, the aperture field on the RES is varying in both the x - and y -directions (*i.e.*, $h = h(x, y)$). However when h depends only on one spatial coordinate (x for instance), the aperture field can be assimilated to a set of conductivities arranged in a purely serial or parallel configuration when the pressure gradient is along x or y respectively. For a parallel configuration, the transmissivity, K_p , of the aperture field is given by the arithmetic mean of the local transmissivities Zimmerman & Bodvarsson (1996)

$$K_p = \frac{1}{12} \langle k \rangle = \frac{1}{12} \langle h^3 + \alpha h^2 \rangle \quad (4.1)$$

For a serial configuration, the transmissivity, K_s is the harmonic mean of the local transmissivities

$$K_s = \frac{1}{12} \left\langle \frac{1}{k} \right\rangle^{-1} = \frac{1}{12} \left\langle \frac{1}{h^3 + \alpha h^2} \right\rangle^{-1} \quad (4.2)$$

In the following, two aperture fields varying with respect to the x -direction only are analyzed. They are defined for $x \in [0, l_x]$ and have a mean value h_0 .

Sinusoidal aperture field

A sinusoidal aperture field is considered first, given by

$$h(x) = h_0 \left(1 + \Upsilon \cos \left(\frac{2\pi x}{l_x} \right) \right) \quad (4.3)$$

where the amplitude, Υ , is assumed to be smaller than unity (non-contact case) and l_x corresponds to the spatial period. The determination of the parallel transmissivity with equation (4.1) is trivial in this case and gives

$$K_p = \frac{3\Upsilon^2 + 2}{24} h_0^3 + \frac{\Upsilon^2 + 2}{24} \alpha h_0^2 \quad (4.4)$$

The evaluation of the serial transmissivity, using equation (4.2), is a little more complex and requires the calculation of the following integral

$$J = \frac{1}{l_x} \int_0^{l_x} \frac{1}{h^3(x) + \alpha h^2(x)} dx \quad (4.5)$$

while $K_s = J^{-1}/12$. By performing a partial fraction decomposition of the integrand, equation (4.5) can be rewritten as

$$J = \frac{1}{l_x} \int_0^{l_x} \frac{1}{\alpha h^2(x)} dx - \frac{1}{l_x} \int_0^{l_x} \frac{1}{\alpha^2 h(x)} dx + \frac{1}{l_x} \int_0^{l_x} \frac{1}{\alpha^2 (h(x) + \alpha)} dx \quad (4.6)$$

The first two integrals in this expression of J can be obtained analytically by making use of the ‘‘Sommerfeld substitution’’ method (see for instance (Hamrock *et al.* 2004)) while the result for the third integral can be found in (Abramowitz & Stegun 1964). The analytical expression of J is finally given by

$$J = \frac{1}{\alpha h_0^2 (1 - \mathcal{Y}^2)^{3/2}} - \frac{1}{\alpha^2 h_0 (1 - \mathcal{Y}^2)^{1/2}} + \frac{1}{\alpha^2 \sqrt{(h_0 + \alpha)^2 - (h_0 \mathcal{Y})^2}} \quad (4.7)$$

yielding the serial transmissivity for a sinusoidal aperture field

$$K_s = \frac{1}{12} \frac{\alpha^2 h_0^2 (1 - \mathcal{Y}^2)^{3/2} \sqrt{(h_0 + \alpha)^2 - (h_0 \mathcal{Y})^2}}{(\alpha - h_0 (1 - \mathcal{Y}^2)) \sqrt{(h_0 + \alpha)^2 - (h_0 \mathcal{Y})^2} + h_0^2 (1 - \mathcal{Y}^2)^{3/2}} \quad (4.8)$$

In the limiting case of no-slip flow, the intrinsic transmissivity for the parallel configuration is

$$K_{0p} = \lim_{\alpha \rightarrow 0} K_p = \frac{3\mathcal{Y}^2 + 2}{24} h_0^3 \quad (4.9)$$

For the serial configuration, the use of l'Hôpital's rule twice indicates that the transmissivity reduces to

$$K_{0s} = \lim_{\alpha \rightarrow 0} K_s = \frac{1}{6} \frac{(1 - \mathcal{Y}^2)^{5/2}}{2 + \mathcal{Y}^2} h_0^3 \quad (4.10)$$

These last two results coincide with those reported in a previous work in the case of an incompressible flow with a no-slip boundary condition, directly leading to the intrinsic transmissivities of a sinusoidal aperture field (Letalleur *et al.* 2002).

Exponential aperture field

In a second step, the following exponential aperture field is considered

$$h(x) = H \exp\left(-\frac{\mathcal{Y}x}{l_x}\right) \quad (4.11)$$

where \mathcal{Y} is a positive constant and H is given by

$$H = \frac{\mathcal{Y}h_0}{1 - e^{-\mathcal{Y}}} \quad (4.12)$$

In that case, the analytical results for the integrals in equations (4.1) and (4.2) yield the following expressions for K_p and K_s

Parameter	Sinusoidal			Exponential		
	#1	#2	#3	#1	#2	#3
l_x	1	1	1	1	1	1
α	$6 \cdot 10^{-2}$	$6 \cdot 10^{-5}$	$6 \cdot 10^{-5}$	$6 \cdot 10^{-2}$	$6 \cdot 10^{-5}$	$6 \cdot 10^{-5}$
h_0	$1 \cdot 10^{-2}$	$1 \cdot 10^{-3}$	$1 \cdot 10^{-2}$	$1 \cdot 10^{-2}$	$1 \cdot 10^{-3}$	$1 \cdot 10^{-2}$
Υ	0.5	0.5	0.9	2	2	4

Table 1: Numerical values of the parameters used to define the sinusoidal and exponential aperture fields in equations (4.3) and (4.11) respectively. Three sets of parameters are investigated for each one. All variables are given in arbitrary but consistent units.

$$K_p = \frac{H^3}{36\Upsilon} (1 - e^{-3\Upsilon}) + \frac{\alpha H^2}{24\Upsilon} (1 - e^{-2\Upsilon}) \quad (4.13)$$

$$K_s = \frac{\alpha^3 H^2 \Upsilon}{6 \left\{ 2H^2 \ln \left(\frac{H + \alpha e^\Upsilon}{H + \alpha} \right) + 2\alpha H (1 - e^\Upsilon) - \alpha^2 (1 - e^{2\Upsilon}) \right\}} \quad (4.14)$$

Again, in the situation of no-slip flow, the intrinsic transmissivities of the exponential aperture field for the parallel configuration is recovered as

$$K_{0p} = \lim_{\alpha \rightarrow 0} K_p = \frac{H^3}{36\Upsilon} (1 - e^{-3\Upsilon}) \quad (4.15)$$

whereas, for the serial configuration, it is given by

$$K_{0s} = \lim_{\alpha \rightarrow 0} K_s = \frac{\Upsilon H^3}{4(e^{3\Upsilon} - 1)} \quad (4.16)$$

It must be noted that the transmissivity in the parallel configuration remains linear in α (see equations (4.4) and (4.13)) while, conversely, K_s exhibits a non linear dependence on the slip parameter as indicated by equations (4.8) and (4.14). This simply results from the fact that the linear dependence on the slip parameter at the local scale (see equation (2.28b)) is preserved by the arithmetic mean while deriving K_p whereas the harmonic mean introduces non linearity. This further suggests that, in the general case, the macroscopic transmissivity tensor \mathbf{K} , which results from a complex average process reflected in equation (3.37), might not be linear in $\xi \bar{\lambda}$. This will be further addressed in section 4.2.

The objective is now to compare the above analytical results for the macroscopic transmissivities of the sinusoidal and exponential aperture fields with those obtained from equation (3.37) and the numerical solution of the closure problem (3.33). The computed solution was achieved using a finite volume scheme over a regular grid while the linear system deriving from the discretization process was solved using a preconditioned conjugate gradient algorithm (Moukalled *et al.* 2016). The numerical values of the parameters used for the sinusoidal and exponential aperture fields in our simulations are reported in table 1.

A quick analysis of the mesh convergence of the scheme must be carried out first to check the accuracy of the numerical procedure. Since the aperture fields under consideration only vary with respect to the x coordinate, the computed macroscopic

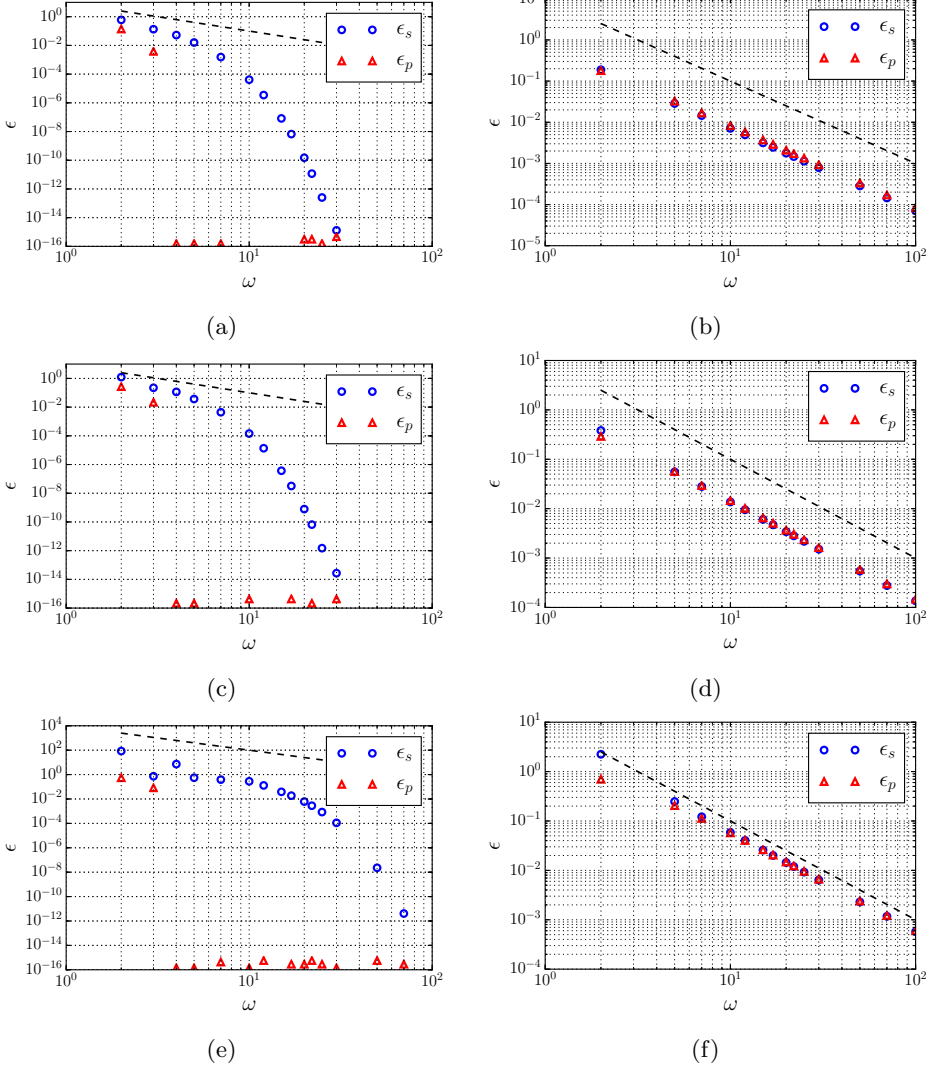


Figure 3: Variation of the relative error given in equation (4.17) between the analytical and numerical solution versus the mesh density ω for the sinusoidal (a) #1, c) #2, e) #3) and exponential (b) #1, d) #2, f) #3) aperture fields. Parameters for aperture fields #1, #2 and #3 are provided in table 1. The dashed line represents a power law function of ω with an exponent of -2 .

transmissivity tensor \mathbf{K} is diagonal and the serial and parallel transmissivities correspond to the K_{xx} and K_{yy} components respectively. Convergence is hence analysed from the relative error between the computed and analytical solutions using the parameters ϵ_p and ϵ_s for the parallel and serial transmissivities, namely

$$\epsilon_p = \frac{|K_{yy} - K_p|}{K_p}, \quad \epsilon_s = \frac{|K_{xx} - K_s|}{K_s} \quad (4.17)$$

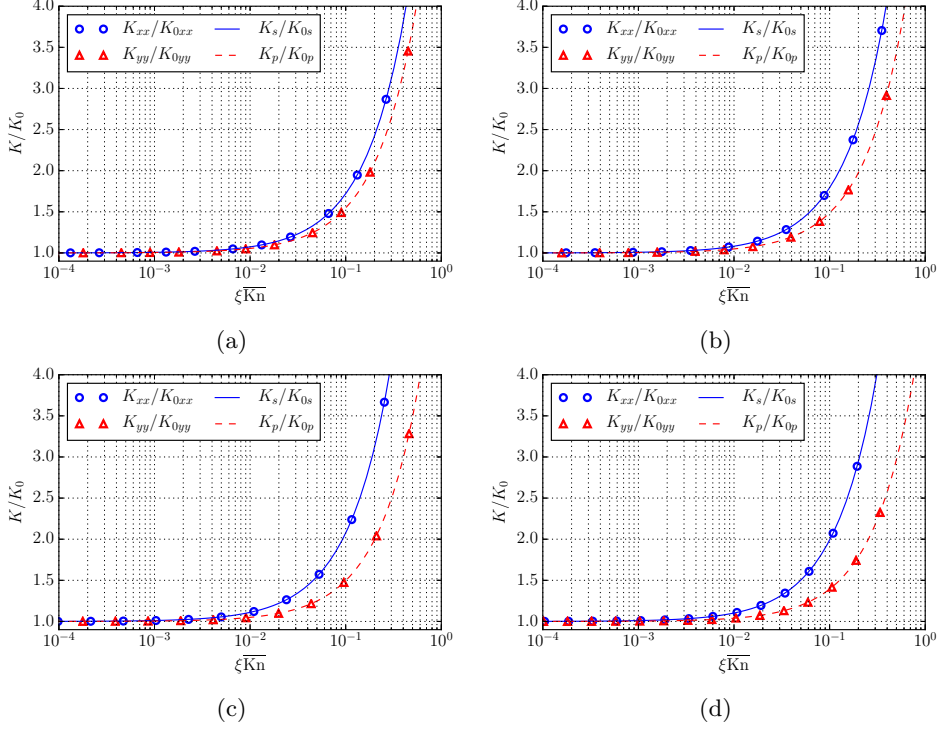


Figure 4: Ratio of the apparent slip-corrected to intrinsic transmissivity K_{ij}/K_{0ij} as a function of $\xi\bar{K}n = \xi\bar{\lambda}/h_{\beta j}$ for the sinusoidal fracture defined by equation (4.3) (a) #1, c) #3) and the exponential aperture field given in equation (4.11) (b) #1, d) #3) (see parameters for aperture fields #1 and #3 in table 1). The characteristic aperture $h_{\beta j}$ is defined by the relationship (4.18). Dots represent the solutions computed from the closure problem (3.33) while solid lines are the analytical solutions reported in equations (4.4), (4.8) and (4.13), (4.14).

where K_p and K_s are respectively given by equations (4.4) and (4.8) for the sinusoidal fracture, and by equations (4.13) and (4.14) for the exponential aperture field.

In figure 3, the variation of the relative errors ϵ_s and ϵ_p are reported versus the mesh density ω defined as the number of sampling points per unit length l_x of the aperture field in the x -direction. The finite volume scheme employed in the numerical method is expected to be second order accurate in space (Moukalled *et al.* 2016). For the exponential aperture field, this property is clearly observed (see figures 3b, 3d and 3f) whereas for the sinusoidal field, the scheme features a much faster convergence rate for both the serial and parallel transmissivities as shown in figure 3a, 3c and 3e leading to the conclusion that the scheme is at least second order accurate in space.

We now report on the effect of the slip parameter on the transmissivities. Numerical results representing the ratio of the apparent slip-corrected to intrinsic transmissivity components K/K_0 versus $\xi\bar{K}n = \xi\bar{\lambda}/h_{\beta j}$ are represented in figure 4 for the sinusoidal and exponential aperture fields. Evidently, normalized transmissivities exclusively depend on $\xi\bar{K}n$ and \mathcal{Y} and, for this reason, results for aperture fields #1 and #3 only, characterized by contrasted values of \mathcal{Y} , are reported in figure 4. The Knudsen number was chosen to be characteristic of the flow direction by using $h_{\beta j}$ given by

$$h_{\beta j} = (12K_{0jj})^{1/3} \quad j = x, y \quad (4.18)$$

which means that $h_{\beta j}$ represents the uniform aperture of a smooth fracture that would exhibit the same intrinsic transmissivity K_{0jj} in the j th-direction ($j = x, y$).

The agreement of our numerical results with the analytical solutions of equations (4.4) and (4.8) for the two aperture fields under consideration is excellent over the whole range of $\xi \overline{Kn}$. For all the configurations (sinusoidal or exponential aperture fields, serial or parallel directions), the dependence of normalized transmissivities on $\xi \overline{Kn}$ is quite similar, although the parallel normalized transmissivity remains smaller than the serial one on the whole range of $\xi \overline{Kn}$. Moreover, one can notice that for both aperture fields, the serial normalized transmissivity increases while the parallel one decreases when \mathcal{T} increases. This can be confirmed by a careful analysis of K_p/K_{0p} , K_s/K_{0s} obtained from the analytical expressions of the transmissivities given above. As expected, when the dimensionless slip parameter $\xi \overline{Kn}$ tends to zero, all the transmissivity components reach their corresponding intrinsic values for the flow occurs in the no slip regime. These results assess the validity of the upscaled model and the numerical scheme used to solve the closure problem (3.33) allowing the determination of the macroscopic transmissivity tensor \mathbf{K} .

4.2. Solutions on a random Gaussian fracture

In this sub-section, some illustrative results on the transmissivity obtained for the complete closure problem (3.33) to compute the tensor \mathbf{K} (equation (3.37)) are presented. They are further compared with the first order approximation in equation (3.48) derived from the solutions of the two sub-problems (3.46) and (3.47) after decomposition, respectively yielding the complete form of the macroscopic transmissivity tensor \mathbf{K} defined by equation (3.37) and the decomposed one defined by relation (3.48). This is performed on a random Gaussian fracture.

4.2.1. Generation of the aperture field

The fracture aperture field considered in this section is generated from a random surface characterized by prescribed statistical parameters. As reported in many other works, (see Mourzenko *et al.* (1995); Plouraboué *et al.* (2006) for instance), the surface height, denoted by z , is supposed to obey a random, shortly-correlated Gaussian function. The numerical generation of the Gaussian rough surface was carried out with an algorithm proposed by Bergström (2012) based on a methodology suggested by Garcia & Stoll (1984). The statistical distribution of z follows a Gaussian probability density function of zero mean value given by

$$\phi(z) = \frac{1}{\sigma_h \sqrt{2\pi}} \exp\left(-\frac{z^2}{2\sigma_h^2}\right) \quad (4.19)$$

in which σ_h is the root mean square height of the surface.

To introduce a short-range correlation in both directions, the generated z -field is convolved with a Gaussian filter so that the auto-correlation function $C(x, y)$ of the resulting surface height, which is also Gaussian for a Gaussian surface, is given by (Patir 1978; Shi *et al.* 2015)

$$C(x, y) = \frac{\langle z(x_0, y_0) z(x_0 + x, y_0 + y) \rangle}{\sigma_h^2} = \exp\left(-\left(\frac{x^2}{\sigma_x^2} + \frac{y^2}{\sigma_y^2}\right)\right) \quad (4.20)$$

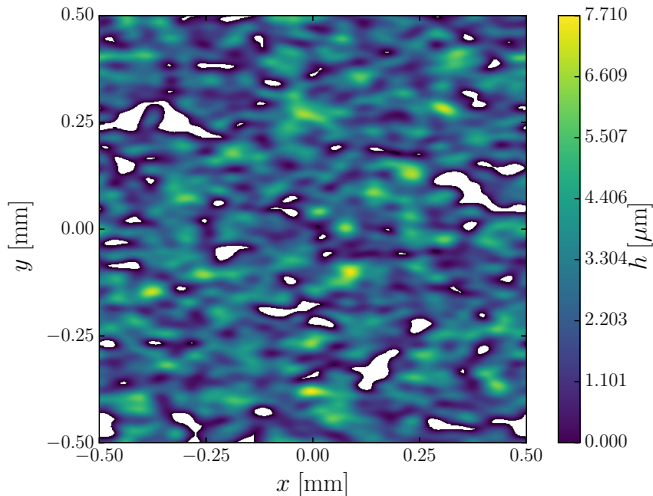


Figure 5: Numerically generated anisotropic aperture field. White zones denote contact spots (*i.e.*, where $h(x, y) = 0$) so that the bearing area reaches 7%.

In this expression, σ_x and σ_y are the correlation lengths in the x - and y -directions respectively. The surface dimensions in the x - and y -directions were set to $l_x = l_y = 1$ mm and a 512×512 Cartesian regular grid was used for the discretization. The root mean square height and correlation lengths were respectively taken as $\sigma_h = 1.5$ μm , $\sigma_x = 40$ μm and $\sigma_y = 20$ μm so that the resulting surface is geometrically anisotropic. The final step to obtain the desired aperture field $h(x, y)$ is to shift the generated Gaussian correlated surface z in the positive vertical direction by a value z_0 ($z_0 = 2.2$ μm) to obtain a new height field $z' = z + z_0$. The aperture $h(x, y)$ is then given by

$$h(x, y) = \begin{cases} z'(x, y) & \text{if } z'(x, y) > 0 \\ 0 & \text{if } z'(x, y) \leq 0 \end{cases} \quad (4.21)$$

A zero value of the aperture field corresponds to a contact spot in the fracture. The resulting generated aperture field is represented in figure 5.

4.2.2. Closure solutions

The closure problem (3.33) was solved on the aperture field of figure 5. An example of the dimensionless fields of the closure variable \mathbf{b} is reported in figure 6 with, for \underline{b}_x , $\xi \overline{Kn} = 0.047$ and, for \underline{b}_y , $\xi \overline{Kn} = 0.059$. Again, $\xi \overline{Kn} = \xi \bar{\lambda} / h_{\beta j}$, $h_{\beta j}$ being given by the relationship (4.18). It should be noted that, since the aperture field is anisotropic with a preferential orientation of the roughness in the x -direction (*i.e.* $\sigma_x > \sigma_y$), the value of K_{0xx} is expected to be larger than K_{0yy} so that \overline{Kn} is larger in the y -direction than in the x -direction. Physically, the closure variable fields represented in figures 6a and 6b are actually the pressure deviation fields made dimensionless by $l_j \|\nabla \langle p \rangle^\beta \cdot \mathbf{e}_j\|$, $j = x, y$, due to a unitary average-pressure gradient in the corresponding j -direction.

Similarly, the two closure sub-problems (3.46) and (3.47) were solved sequentially using the same numerical procedure, the solution of the former being required to solve the latter. The dimensionless fields of the decomposed intrinsic closure variables \mathbf{b}_0 and \mathbf{b}_1 are represented in figure 7 for the aperture field of figure 5. All the closure variable fields

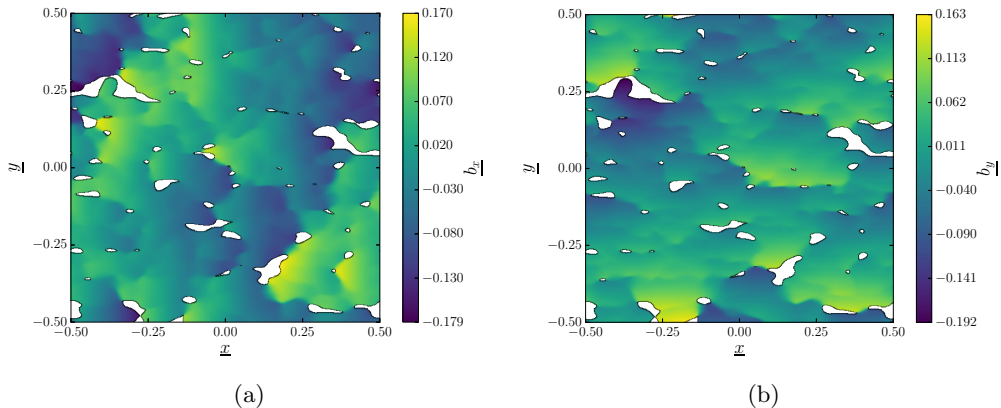


Figure 6: Dimensionless closure variable fields computed on the aperture field of figure 5: a) $\underline{b}_x = b_x/l_x$ for $\xi\overline{Kn} \approx 0.047$; b) $\underline{b}_y = b_y/l_y$ for $\xi\overline{Kn} \approx 0.059$. Surface dimensions are made dimensionless according to $\underline{x} = x/l_x$ and $\underline{y} = y/l_y$.

allow the computation of the transmissivity tensor \mathbf{K} and its approximation at $O(\xi\overline{Kn})$ using the average in equations (3.37) and (3.48) through (3.50) respectively.

Results on the ratio of the apparent slip-corrected to intrinsic transmissivity components K_{ij}/K_{0ij} ($i, j = x, y$) are represented versus $\xi\overline{Kn} = \xi\bar{\lambda}/h_{\beta j}$ in figure 8. It can be clearly seen that the apparent slip-corrected transmissivity exhibits a non-linear behavior with respect to $\xi\overline{Kn}$ as indicated by the deviation of the complete transmissivity components from their first order approximation analogues. For the Gaussian aperture field under study in this section, a stronger non-linearity is observed on the extra-diagonal terms of the transmissivity tensor compared to its diagonal components. The first order approximation can therefore become inaccurate in some particular situations, even when $\xi\overline{Kn}$ remains small enough for the slip regime to remain valid. To better illustrate this point, the relative error ϵ between the complete apparent slip-corrected transmissivity and its first order approximation is reported in figure 9. It shows that this relative error increases with increasing values of $\xi\overline{Kn}$, whatever the component. Furthermore, for a given value of the slip parameter, this error is roughly one order of magnitude larger for the extra-diagonal terms than for the diagonal terms. For $\xi\overline{Kn} \approx 0.1$, the relative error is approximately 1.5% for the diagonal terms and reaches 16% for the extra-diagonal terms. Consequently the error cannot be considered as negligible even in a domain where the slip-flow is expected to be relevant for this particular surface. As mentioned in section 4.1, this behavior obviously results from the spatial dependence of the aperture field and from the averaging process that breaks the linearity present at the underlying roughness scale. In the particular case of a perfectly smooth fracture, the transmissivity tensor is spherical and depends linearly on $\xi\overline{Kn}$ whatever its value, leading to a first order approximation of the transmissivity tensor that exactly corresponds to the complete one.

5. Conclusions

In this work, a cautious formal derivation of the Reynolds equation for an isothermal, slightly compressible gas flow in a fracture in the slip regime was derived first, using a first order slip boundary condition at the fracture walls. The model is second order accurate in the local slope of the wall defaults and first order accurate in the Knudsen number at the roughness scale.

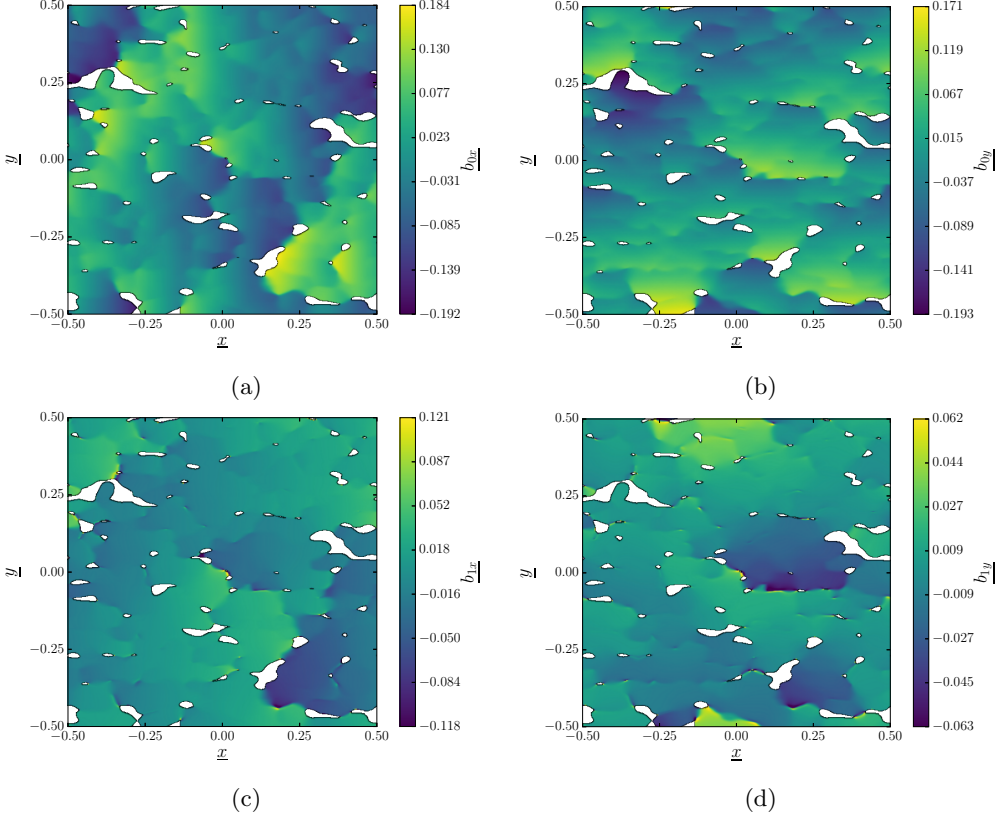


Figure 7: Dimensionless closure variable fields at the first order computed on the unit version of the aperture field of figure 5: a) $\underline{b}_{0x} = b_{0x}/l_x$; b) $\underline{b}_{0y} = b_{0y}/l_y$; c) $\underline{b}_{1x} = b_{1x}h_{\beta x}/l_x$; d) $\underline{b}_{1y} = b_{1y}h_{\beta y}/l_y$.

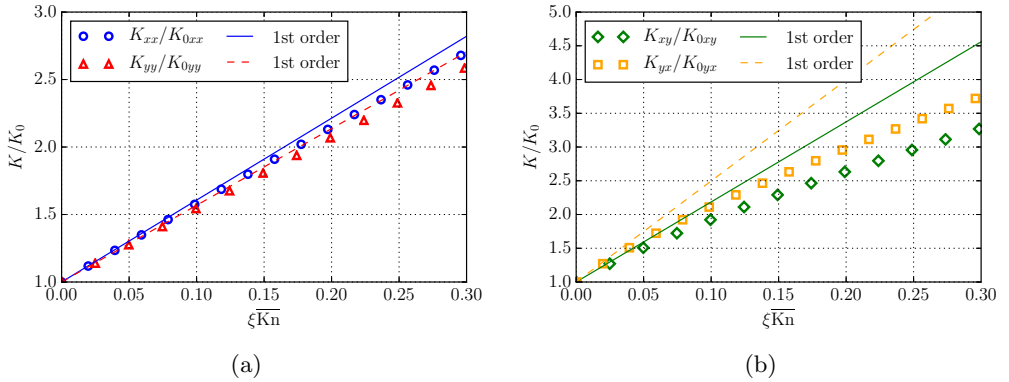


Figure 8: Ratio of the apparent slip-corrected to intrinsic transmissivity plotted as a function of the dimensionless slip parameter, computed from the solution of the complete closure problem (3.33) (dots) and estimated at the first-order with the solutions of the sub-problems (3.46) and (3.47) (solid lines): a) diagonal components; b) extra-diagonal components.

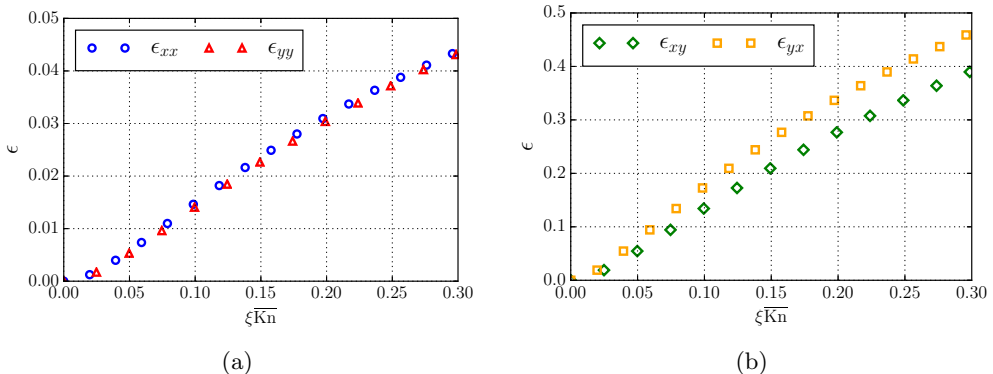


Figure 9: Evolution of the relative error between the computed solution of the complete closure problem (3.33) and estimated at the first-order with the solutions of the sub-problems (3.46) and (3.47). The solution of the complete closure problem is taken as the reference: a) diagonal components; b) extra-diagonal components.

An upscaling procedure of the first order slip-corrected Reynolds equation was applied next on a representative elementary surface (RES) of a fracture using the method of volume averaging. As for any upscaling technique, the procedure was applied with the constraint that a scale hierarchy can be satisfied, an issue that must be carefully considered in the case of fractures in geological materials for instance. In practice, however, this constraint might not be too restrictive regarding the first upscaling considered in this work, as for instance in the case of assemblies of machined surfaces. The ensuing upscaled model was shown to be entirely determined by the solution of a closure problem that is non intrinsic due to the presence of slip. The derived macroscopic momentum conservation equation has a Reynolds-like form and involves an effective transmissivity tensor \mathbf{K} that is characteristic of the RES at a given Knudsen number. At the first order in the Knudsen number, the macroscopic transmissivity tensor can be approximated by an expansion that involves two intrinsic tensors, namely, \mathbf{K}_0 , the purely viscous transmissivity tensor, and \mathbf{S} , the slip correction tensor, both being obtained from the solution of two coupled and intrinsic closure sub-problems. When no slip effect is considered in the model, the effective transmissivity tensor \mathbf{K} and its first order approximation both reduce to \mathbf{K}_0 , in accordance with existing models (Vallet *et al.* 2009; Prat *et al.* 2002).

Validation of the complete non-intrinsic model was carried out numerically on fractures having simple geometries featuring defaults in one-direction only, namely a sinusoidal and an exponential roughness, for which analytical expressions for the transmissivities with slip were obtained. The agreement between the analytical and computed solutions showed an excellent agreement over the whole investigated range of the Knudsen number.

Numerical comparisons have been performed between \mathbf{K} and its first order approximation on a Gaussian shortly-correlated rough aperture field. A non-linear behavior of the complete form of the transmissivity tensor was evidenced as a result of the averaging process that breaks the existing linearity at the underlying roughness scale. For this particular fracture, the relative error can reach non-negligible values for $\xi \overline{Kn} \approx 0.1$, especially for the off-diagonal terms of \mathbf{K} . Further work is necessary for an experimental validation of the upscaling procedure presented in this article.

Acknowledgements

Financial support from CEA and CEA-Technetics joint sealing laboratory for this research is gratefully acknowledged.

Appendix A.

In this appendix, it is shown that the arbitrary function γ involved in the representation of the pressure deviation (see equation (3.32))

$$\tilde{p} = \mathbf{b} \cdot \nabla \langle p \rangle^\beta + \gamma \quad (\text{A } 1)$$

is a constant.

When this representation is inserted into the original closure problem given by equations (3.31) and taking into account that the closure vector \mathbf{b} is chosen so as to satisfy the boundary value problem (3.33), the following closure problem for γ is obtained

$$\nabla \cdot (k \nabla \gamma) = 0 \quad \text{in } \mathcal{S}_\beta \quad (\text{A } 2a)$$

$$\mathbf{n}_{\sigma\beta} \cdot \nabla \gamma = 0 \quad \text{on } \mathcal{C}_{\sigma\beta} \quad (\text{A } 2b)$$

$$\gamma(\mathbf{x} + \mathbf{II}_i) = \gamma(\mathbf{x}) \quad i = x, y \quad (\text{A } 2c)$$

Multiplying equation (A 2a) by γ and rearranging the divergence yields

$$\nabla \cdot (\gamma k \nabla \gamma) = k \nabla \gamma \cdot \nabla \gamma \quad (\text{A } 3)$$

This expression can now be integrated over \mathcal{S}_β to obtain

$$\int_{\mathcal{S}_\beta} \nabla \cdot (\gamma k \nabla \gamma) \, dS = \int_{\mathcal{S}_\beta} k \nabla \gamma \cdot \nabla \gamma \, dS \quad (\text{A } 4)$$

or, equivalently, when Ostrogradsky's theorem is employed on the *lhs* of this expression

$$\int_{\mathcal{C}_{\sigma\beta}} \gamma k \mathbf{n}_{\sigma\beta} \cdot \nabla \gamma \, dl = \int_{\mathcal{S}_\beta} k \nabla \gamma \cdot \nabla \gamma \, dS \quad (\text{A } 5)$$

Using the boundary condition (A 2b) in equation (A 5) allows a simplification of the latter to the following form

$$\int_{\mathcal{S}_\beta} k \nabla \gamma \cdot \nabla \gamma \, dS = 0 \quad (\text{A } 6)$$

Since k is not zero in \mathcal{S}_β and $\nabla \gamma \cdot \nabla \gamma \geq 0$, the only possible solution to satisfy equation (A 6) is γ to be a constant, completing the proof. Any constant superimposed to the field of \tilde{p} is of no importance in the macroscopic model that involves $\nabla \tilde{p}$ in the closure procedure leading to the macroscopic Reynolds model.

REFERENCES

ABRAMOWITZ, M. & STEGUN, I. A. 1964 *Handbook of Mathematical Functions: With Formulas, Graphs, and Mathematical Tables*. Dover Publications.

- AGRAWAL, A. & PRABHU, S. V. 2008 Survey on measurement of tangential momentum accommodation coefficient. *J. Vac. Sci. Technol. A* **26** (4), 634–645.
- ARKILIC, E. B., BREUER, K. S. & SCHMIDT, M. A. 2001 Mass flow and tangential momentum accommodation in silicon micromachined channels. *Journal of Fluid Mechanics* **437**, 29–43.
- ARKILIC, E. B., SCHMIDT, M. A. & BREUER, K. S. 1997 Gaseous slip flow in long microchannels. *Journal of Microelectromechanical Systems* **6** (2), 167–178.
- BERGSTRÖM, D. 2012 Rough surface generation & analysis. http://www.mysimlabs.com/surface_generation.html.
- BERKOWITZ, B. 2002 Characterizing flow and transport in fractured geological media: A review. *Advances in Water Resources* **25** (8–12), 861–884.
- BESKOK, A. & KARNIAKAKIS, G. E. 1999 A model for flows in channels, pipes, and ducts at micro and nano scales. *Microscale Thermophysical Engineering* **3** (1), 43–77.
- BURGDORFER, A. 1959 The influence of the molecular mean free path on the performance of hydrodynamic gas lubricated bearings. *Journal of Basic Engineering* **81**, 94–100.
- CAI, C., SUN, Q. & BOYD, I. D. 2007 Gas flows in microchannels and microtubes. *Journal of Fluid Mechanics* **589**, 305–314.
- CERCIGNANI, C. 1988 *The Boltzmann Equation and its Applications*. Springer.
- CHRISTENSEN, H. 1970 Stochastic models for hydrodynamic lubrication of rough surfaces. In *Proceedings of the Institution of Mechanical Engineers*, , vol. 184, pp. 1013–1026.
- DAPP, W. B. & MÜSER, M. H. 2016 Fluid leakage near the percolation threshold. *Scientific Reports* **6**, 19513.
- DONGARI, N., AGRAWAL, A. & AGRAWAL, A. 2007 Analytical solution of gaseous slip flow in long microchannels. *International Journal of Heat and Mass Transfer* **50** (17–18), 3411–3421.
- EWART, T., PERRIER, P., GRAUR, I. & MÉOLANS, J. G. 2007 Tangential momentum accommodation in microtube. *Microfluidics and Nanofluidics* **3** (6), 689–695.
- GARCIA, N. & STOLL, E. 1984 Monte Carlo calculation for electromagnetic-wave scattering from random rough surfaces. *Physical Review Letters* **52** (20), 1798–1801.
- GRAUR, I. A., PERRIER, P., GHOZLANI, G. & MOLANS, J. G. 2009 Measurements of tangential momentum accommodation coefficient for various gases in plane microchannel. *Physics of Fluids* **21** (102004).
- GRAY, W. G. 1975 A derivation of the equations for multi-phase transport. *Chemical Engineering Science* **30** (2), 229–233.
- HAMROCK, B. J., SCHMID, S. R. & JACOBSON, B. O. 2004 *Fundamentals of Fluid Film Lubrication*. CRC Press.
- HOWES, F. A. & WHITAKER, S. 1985 The spatial averaging theorem revisited. *Chemical Engineering Science* **40** (8), 1387–1392.
- KARNIAKAKIS, G. E., BESKOK, A. & ALURU, N. 2005 *Microflows and Nanoflows: Fundamentals and Simulation, Interdisciplinary Applied Mathematics*, vol. 29. Springer.
- KLINKENBERG, L. J. 1941 The permeability of porous media to liquids and gases. In *Drilling and Production Practice*, pp. 200–213. American Petroleum Institute.
- LASSEUX, D. & VALDES PARADA, F. J. 2017 Symmetry properties of macroscopic transport coefficients in porous media. *Physics of Fluids* **29** (4).
- LASSEUX, D., VALDES PARADA, F. J., OCHOA TAPIA, J. A. & GOYEAU, B. 2014 A macroscopic model for slightly compressible gas slip-flow in homogeneous porous media. *Physics of Fluids* **26** (5).
- LASSEUX, D., VALDÉS PARADA, F. J. & PORTER, M. 2016 An improved macroscale model for gas slip flow in porous media. *Journal of Fluid Mechanics* **805**, 118–146.
- LAUGA, E., BRENNER, M. P. & STONE, H. A. 2007 *Springer Handbook of Experimental Fluid Mechanics*, chap. Microfluidics: The No-Slip Boundary Condition, pp. 1219–1240. Springer.
- LEDoux, Y., LASSEUX, D., FAVRELIERE, H., SAMPER, S. & GRANDJEAN, J. 2011 On the dependence of static flat seal efficiency to surface defects. *International Journal of Pressure Vessels and Piping* **88** (11–12), 518–529.
- LEE, S. H., LOUGH, M. F. & JENSEN, C. L. 2001 Hierarchical modeling of flow in naturally fractured formations with multiple length scale. *Water Resour. Res.* **37** (3), 443–455.

- LEFRANÇOIS, M. 2004 Metal-to-metal seals: The innovative route in static sealing. *Sealing Technology* **2004** (4), 10–13.
- LETALLEUR, N., PLOURABOUÉ, F. & PRAT, M. 2002 Average flow model of rough surface lubrication: Flow factors for sinusoidal surfaces. *Journal of Tribology* **124** (3), 539–546.
- LOEB, L. B. 2004 *The Kinetic Theory of Gases*. Dover Publications.
- LORENZ, B. & PERSSON, B. N. J. 2009 Leak rate of seals: Comparison of theory with experiment. *EPL* **86** (4), 44006.
- MARIE, C. & LASSEUX, D. 2007 Experimental leak-rate measurement through a static metal seal. *Journal of Fluids Engineering* **129** (6), 799–805.
- MARIE, C., LASSEUX, D., ZAHOUANI, H. & SAINSOT, P. 2003 An integrated approach to characterize liquid leakage through metal contact seal. *European Journal of Mechanical and Environmental Engineering* **48** (2), 81–86.
- MAXWELL, J. C. 1879 On stresses in rarified gases arising from inequalities of temperature. *Philosophical Transactions of the Royal Society of London* **170**, 231–256.
- MCMENLY, M. J., GALLIS, M. A. & D., BOYD I. 2005 Empirical slip and viscosity model performance for microscale gas flow. *Int. J. Numer. Methods Fluids* **49**, 1169–1191.
- MOUKALLED, F., MANGANI, L. & DARWISH, M. 2016 *The Finite Volume Method in Computational Fluid Dynamics, Fluid Mechanics and Its Applications*, vol. 113. Springer.
- MOURZENKO, V., THOVERT, J.-F. & ADLER, P. 1995 Permeability of a single fracture: Validity of the Reynolds equation. *Journal de Physique II* **5** (3), 465–482.
- PATIR, N. 1978 A numerical procedure for random generation of rough surfaces. *Wear* **47** (2), 263–277.
- PATIR, N. & CHENG, H. S. 1978 An average flow model for determining effects of three-dimensional roughness on partial hydrodynamic lubrication. *Journal of Lubrication Technology* **100** (1), 12–17.
- PÉREZ-RÀFOLS, F., LARSSON, R. & ALMQVIST, A. 2016 Modelling of leakage on metal-to-metal seals. *Tribology International* **94**, 421–427.
- PLOURABOUÉ, F., FLUCKIGER, F., PRAT, M. & CRISPEL, P. 2006 Geodesic network method for flows between two rough surfaces in contact. *Physical Review E* **73**, 036305.
- PORODNOV, B. T., SUETIN, P. E., BORISOV, S. F. & AKINSHIN, V. D. 1974 Experimental investigation of rarefied gas flow in different channels. *Journal of Fluid Mechanics* **64** (3), 417–438.
- PRAT, M., PLOURABOUÉ, F. & LETALLEUR, N. 2002 Averaged Reynolds equation for flows between rough surfaces in sliding motion. *Transport in Porous Media* **48** (3), 291–313.
- QUINTARD, M. & WHITAKER, S. 1996 Transport in chemically and mechanically heterogeneous porous media. i: Theoretical development of region-averaged equations for slightly compressible single-phase flow. *Advances in Water Resources* **19** (1), 29–47.
- SHI, F., CHOI, W., LOWE, M. J. S., SKELTON, E. A. & CRASTER, R. V. 2015 The validity of Kirchhoff theory for scattering of elastic waves from rough surfaces. *Proceedings of the Royal Society of London A: Mathematical, Physical and Engineering Sciences* **47** (2178), 19, arXiv: <http://rspa.royalsocietypublishing.org/content/471/2178/20140977.full.pdf>.
- SKJETNE, E. & AURIAULT, J.-L. 1999 Homogenization of wall-slip gas flow through porous media. *Transport in Porous Media* **36** (3), 293–306.
- STOUT, K.J. & BLUNT, L. 2013 *Three dimensional surface topography*. London: Butterworth-Heinemann.
- STOUT, K.J., BLUNT, L., DONG, W.P., MAINSAH, E., LUO, N., MATHIA, T., SULLIVAN, P.J. & ZAHOUANI, H. 2000 *The development of methods for the characterisation of roughness in three dimensions*. London: Penton Press.
- STOUT, K.J., DAVIS, E.J. & SULLIVAN, P.J. 1990 *Atlas of machined surfaces*. London: Chapman and Hall.
- SZERI, A. Z. 1998 *Fluid Film Lubrication*. Cambridge University Press.
- TRIPP, J. H. 1983 Surface roughness effects in hydrodynamic lubrication: The flow factor method. *Journal of Lubrication Technology* **105** (3), 458–463.
- TSANG, Y. W. & TSANG, C. F. 1987 Channel model of flow through fractured media. *Water Resour. Res.* **23** (3), 467–479.
- VALLET, C., LASSEUX, D., SAINSOT, P. & ZAHOUANI, H. 2009 Real versus synthesized fractal

- surfaces: Contact mechanics and transport properties. *Tribology International* **42** (2), 250–259.
- VAN DYKE, M. 1975 *Perturbation methods in fluid mechanics*. Stanford: The Parabolic Press.
- WHITAKER, S. 1999 *The Method of Volume Averaging, Theory and Applications of Transport in Porous Media*, vol. 13. Springer.
- ZIMMERMAN, R. W. & BODVARSSON, G. S. 1996 Hydraulic conductivity of rock fractures. *Transport in Porous Media* **23** (1), 1–30.