



HAL
open science

Evolutionary History of Plant LysM Receptor Proteins Related to Root Endosymbiosis

Clare Gough, Ludovic Cottret, Benoît Lefebvre, Jean-Jacques Bono

► **To cite this version:**

Clare Gough, Ludovic Cottret, Benoît Lefebvre, Jean-Jacques Bono. Evolutionary History of Plant LysM Receptor Proteins Related to Root Endosymbiosis. *Frontiers in Plant Science*, 2018, 9, 10.3389/fpls.2018.00923 . hal-02366084

HAL Id: hal-02366084

<https://hal.science/hal-02366084v1>

Submitted on 26 May 2020

HAL is a multi-disciplinary open access archive for the deposit and dissemination of scientific research documents, whether they are published or not. The documents may come from teaching and research institutions in France or abroad, or from public or private research centers.

L'archive ouverte pluridisciplinaire **HAL**, est destinée au dépôt et à la diffusion de documents scientifiques de niveau recherche, publiés ou non, émanant des établissements d'enseignement et de recherche français ou étrangers, des laboratoires publics ou privés.



Distributed under a Creative Commons Attribution 4.0 International License



Evolutionary History of Plant LysM Receptor Proteins Related to Root Endosymbiosis

Clare Gough*, Ludovic Cottret, Benoit Lefebvre and Jean-Jacques Bono

LIPM, Université de Toulouse, INRA, CNRS, Castanet-Tolosan, France

LysM receptor-like kinases (LysM-RLKs), which are specific to plants, can control establishment of both the arbuscular mycorrhizal (AM) and the rhizobium-legume (RL) symbioses in response to signal molecules produced, respectively, by the fungal and bacterial symbiotic partners. While most studies on these proteins have been performed in legume species, there are also important findings that demonstrate the roles of LysM-RLKs in controlling symbiosis in non-legume plants. Phylogenomic studies, which have revealed the presence or absence of certain LysM-RLKs among different plant species, have provided insight into the evolutionary mechanisms underlying both the acquisition and the loss of symbiotic properties. The role of a key nodulation LysM-RLK, NFP/NFR5, in legume plants has thus probably been co-opted from an ancestral role in the AM symbiosis, and has been lost in most plant species that have lost the ability to establish the AM or the RL symbiosis. Another LysM-RLK, LYK3/NFR1, that controls the RL symbiosis probably became neo-functionalised following two rounds of gene duplication. Evidence suggests that a third LysM-RLK, LYR3/LYS12, is also implicated in perceiving microbial symbiotic signals, and this protein could have roles in symbiosis and/or plant immunity in different plant species. By focusing on these three LysM-RLKs that are widespread in plants we review their evolutionary history and what this can tell us about the evolution of both the RL and the AM symbioses.

OPEN ACCESS

Edited by:

Jeanne Marie Harris,
University of Vermont, United States

Reviewed by:

Rene Geurts,
Wageningen University & Research,
Netherlands

Stéphane De Mita,
INRA UMR1136 Interactions
Arbres-Microorganismes, France

*Correspondence:

Clare Gough
clare.gough@inra.fr

Specialty section:

This article was submitted to
Plant Evolution and Development,
a section of the journal
Frontiers in Plant Science

Received: 08 April 2018

Accepted: 11 June 2018

Published: 04 July 2018

Citation:

Gough C, Cottret L, Lefebvre B and
Bono J-J (2018) Evolutionary History
of Plant LysM Receptor Proteins
Related to Root Endosymbiosis.
Front. Plant Sci. 9:923.
doi: 10.3389/fpls.2018.00923

Keywords: LysM domain, kinase domain, NFP, LYR3, LYK3, nodulation, arbuscular mycorrhization, lipochitooligosaccharide

INTRODUCTION

In plants, several LysM receptor-like kinases (LysM-RLKs) have been characterised as symbiotic receptor proteins. After an introduction about the evolutionary origins of LysM-RLKs, we focus on three LysM-RLKs, known as NFP/NFR5, LYK3/NFR1, and LYR3/LYS12 in *Medicago truncatula*/*Lotus japonicus*, and their hypothetical evolutionary histories related to root endosymbiosis establishment. Other LysM-RLKs described in the text are listed in the glossary.

EVOLUTIONARY ORIGINS OF LYSM-RLKS

Proteins incorporating three extracellular LysM domains, a transmembrane domain and an intracellular kinase domain (**Figure 1A**) are specific to plants, and result from evolutionary events that apparently predate plant colonization of the land (Delaux et al., 2015). Whether the LysM triplet was only formed once is difficult to know, but LysM1, LysM2, and LysM3 of each protein

usually resemble more the same domain of homologous LysM-RLK proteins than other domains of the same protein (Arrighi et al., 2006). LysM domains are of bacterial origin, but unlike prokaryotic proteins with repeated LysM domains, those of LysM-RLKs are always separated by conserved cysteine-X-cysteine motifs, responsible for the formation of disulphide bridges (Lefebvre et al., 2012).

Three types of kinase domain can be distinguished for LysM-RLKs, two of which are predicted to have kinase activity, while a third group can be considered to be pseudo-kinases (Arrighi et al., 2006). These all have a common evolutionary origin, since all kinase domains of plant RLKs form a monophyletic family within the superfamily of plant kinases (Shiu and Bleecker, 2001). Symbiotic LysM-RLKs have so far been identified as “LYK-type” (active kinase) or “LYR-type” (pseudo-kinase) proteins. The presence of both types in all higher plants, together with strong conservation of intron-exon structure, indicates their ancient evolutionary origin and ancient events of duplication. Canonical 3-D structures can be predicted for LYR-type kinase domains (Arrighi et al., 2006), indicating that they evolved from active kinase domains. From our sequence analyses, the first changes were probably loss of the glycine-rich loop and the “DFG” motif at the start of the activation loop, which are ubiquitously absent in such proteins. Subsequently, one evolutionary line leads to proteins such as NFP that have lost the activation loop in their kinase domains, and another leads to most other LYR-type proteins, which have a conserved activation loop. The loss of the activation loop in NFP is common to all plant species analysed here, as shown in the sequence logos in **Figure 1B**, which include the basal flowering plant *Amborella trichopoda* estimated to have split from other flowering plants 145–210 MYA (Aoki et al., 2004). These sequence logos also show good sequence conservation in the activation loop region among all the LYR3 proteins analysed (**Figure 1B**).

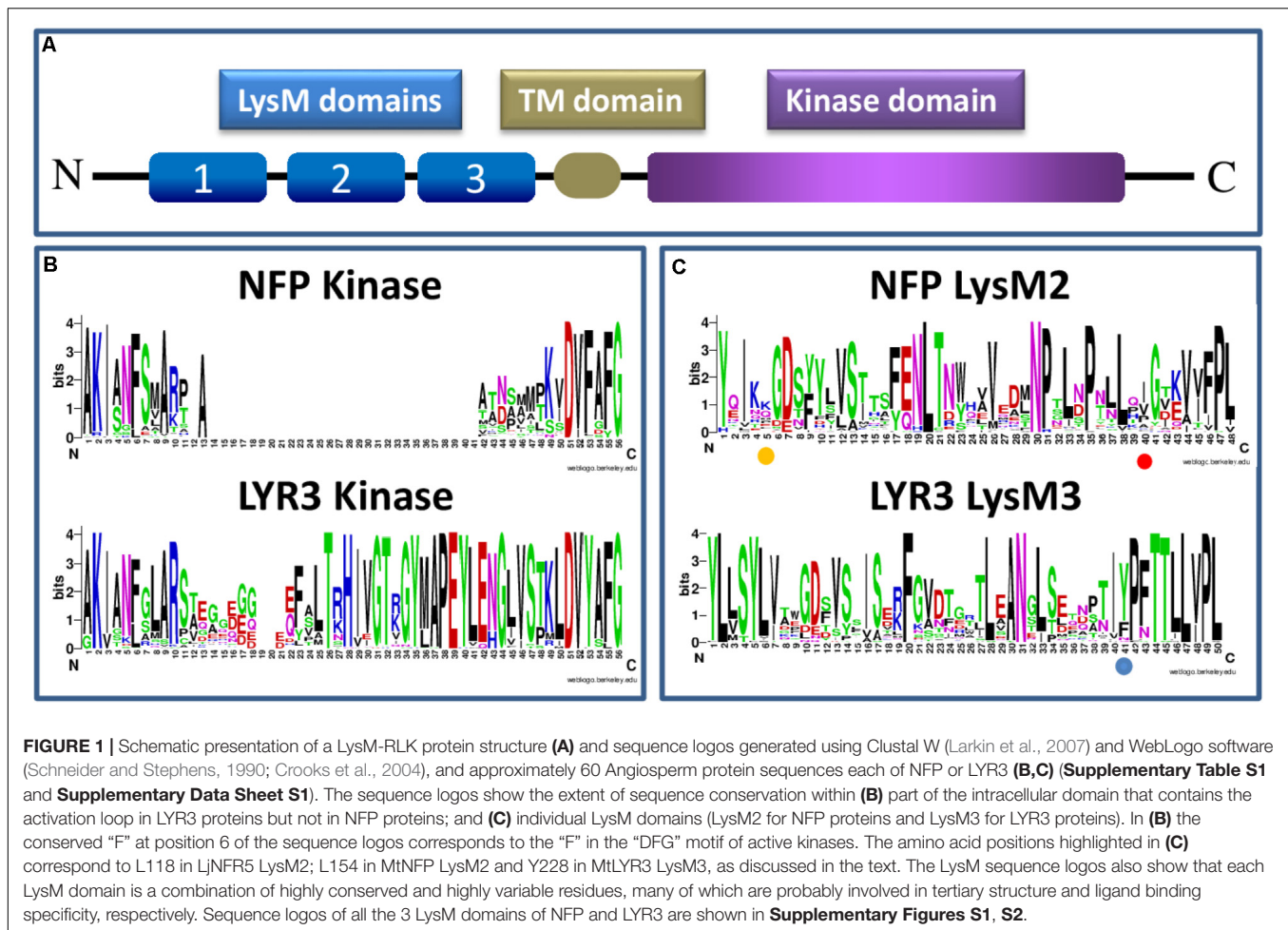
THE EVOLUTIONARY ACQUISITION AND LOSS OF SYMBIOTIC NFP PROTEINS

NFP proteins have been shown to play important roles in establishment of the arbuscular mycorrhizal (AM) symbiosis in the non-legume dicot plants *Parasponia andersonii* (Op den Camp et al., 2010) and *Solanum lycopersicum* (Buendia et al., 2016), and they control nodulation in model legume plants (Gough and Cullimore, 2011). There is a lot of evidence that NFP proteins first controlled the AM symbiosis that evolved approximately 400 MYA, and were subsequently recruited by legume plants so that bacteria could activate symbiotic signalling pathways that were adapted to allow nodulation (Geurts et al., 2016), which appeared approximately 65 MYA. The presence of a pseudo-kinase in a LysM-RLK (LYR-type) involved in both symbioses suggests signal transduction occurs via protein/protein interactions. At least in the model legumes *M. truncatula* and *L. japonicus*, it is likely that heterodimerisation of NFP/NFR5 proteins with the kinase-active LYK3/NFR1 LysM-RLK forms a receptor complex (Madsen et al., 2011; Pietraszewska-Bogiel et al., 2013; Moling et al., 2014).

Legume NFP proteins are essential for the perception of rhizobial Nod factors, which are lipo-chitooligosaccharide (LCO) signal molecules, consisting of an *N*-acetyl glucosamine backbone and an acyl chain. In acquiring the ability to synthesise LCOs, rhizobial bacteria mimicked the production of LCOs, the so-called Myc-LCOs, produced by AM fungi (Maillet et al., 2011). LysM domains of bacterial proteins recognise peptidoglycan that contains a backbone alternating *N*-acetyl glucosamine and *N*-acetyl muramic acid. Appropriate changes to the module of three LysM domains that enabled recognition of an LCO molecule must therefore have been selected during evolution, and, for the rhizobium-legume (RL) symbiosis, there were presumably further selections for recognition of Nod factor decorations that are important in host specificity. Studies have identified critical residues in LysM2 of both MtNFP and LjNFR5. For MtNFP, this residue (L154) is different in orthologues of closely-related legume species nodulated by rhizobia producing different Nod factor structures (Bensmihen et al., 2011). Using complementation tests, the switch to L154 in the *Pisum sativum* NFP ortholog enabled *M. truncatula* mutant plants to be nodulated (Bensmihen et al., 2011). In LjNFR5, the L118 residue might define specificity towards decorations present on the non-reducing end of Nod factors (Radutoiu et al., 2007), and Nod factor binding to an individual LysM2 of LjNFR5 was reported (Sorensen et al., 2014). The sequence logos we generated with LysM domains of NFP proteins show that these two LysM2 residues implicated in the biological function of NFP proteins are both variable, compatible with direct or indirect roles in specific ligand recognition (**Figure 1C**). Using a sliding window approach in *L. japonicus*, some evidence was also provided for positive selection in LjNFR5 LysM2 (Lohmann et al., 2010). No significant signatures of selection were found in a study of nucleotide diversity of NFP in 30 genotypes of *M. truncatula* (De Mita et al., 2007).

During legume evolution, NFP became indispensable for the RL symbiosis, but not for the AM symbiosis, at least in model legumes (Ben Amor et al., 2003; Madsen et al., 2003). This suggests differences in activation of AM signalling in legume and non-legume plants. In addition, AM signalling activation might be different in monocots, despite the AM symbiosis appearing well before the monocot-dicot split, since there is no observable AM phenotype for *Osnfr5* knock-out mutants. However, these mutants show reduced symbiotic gene expression, and a chimeric receptor consisting of the extracellular domain of LjNFR5 and the intracellular domain of OsNFR5 complements an *Ljnfr5* mutant for rhizobial symbiosis, indicating some conservation of function (Miyata et al., 2016).

NFP and LYR3 are in different clades of the *M. truncatula* LysM-RLK family (Bono et al., 2018). Nevertheless, NFP genes are often in tandem with a LYR3 gene, suggesting an ancient common evolutionary history, and a possible symbiotic role of the ancestral gene. This idea is reinforced by the finding that LYR3 proteins from *M. truncatula*, *L. japonicus* (LYS12), *P. sativum*, *Glycine max*, and *Phaseolus vulgaris* are high affinity LCO binding proteins (Fliegmann et al., 2013; Malkov et al., 2016). Furthermore, Malkov et al. (2016) identified residues that are good candidates to be involved in a high affinity LCO binding



site in LysM3, including a tyrosine residue, and their data suggest that loss of one or more of these residues in the non AM species *Lupinus angustifolius*, has led to loss of LCO binding. In our sequence logo analysis on LysM domains of LYR3 proteins (**Figure 1C**), this tyrosine residue is relatively well conserved across LYR3 proteins in plants, suggesting conservation of ligand binding properties. Although MtLYR3 can bind both Nod factors and Myc-LCOs, this protein is not indispensable for either symbiosis, but the LCO binding properties and reported interaction between MtLYR3 and MtLYK3 (Fliegmann et al., 2016) are suggestive of a symbiotic-related function.

To get further insights into the evolutionary histories of NFP and LYR3 proteins, we constructed phylogenetic trees with approximately 60 protein sequences each of NFP and LYR3 orthologues from 64 Angiosperm species (**Supplementary Table S1** and **Supplementary Data Sheet S1**). In the *Fabaceae* family, traces of the whole genome duplication event, dated at approximately 60 MYA (Cannon et al., 2015), can be seen (**Figure 2**). In some species the second copy of NFP (called LYR1 in *M. truncatula*) has been maintained (**Figure 2A**), while in other species, there is a second copy of LYR3 (called LYR3-2 in *Lupinus angustifolius*) (**Figure 2B**). No symbiotic role has been shown for any of these second copies, and divergence from consensus

sequences could suggest a process of pseudogenisation. The presence of two copies each of NFP and LYR3 in *Populus* species could be due to the Salicoid genome duplication ancestral to speciation in this family, approximately 58 MYA (Harikrishnan et al., 2015). Other more recent events of genome duplication or hybridisation, have led to polyploidy in *G. max* and *Triticum aestivum*, respectively, and consequent additional copies of NFP and LYR3. Other examples of duplications include the two significantly different copies of NFP in both *Cucumis sativus* and *Cucumis melo*, and the three divergent copies of LYR3 encoded in tandem in *Beta vulgaris*.

A particularly interesting example of NFP duplication is in Rosales plants, where the *NFP2* gene was recently identified in three *Parasponia* species, and with high sequence divergence compared to the *NFP1* gene in these plants (van Velzen et al., 2018). Importantly, Van Velzen et al. found that *NFP2* is absent in closely related non-nodulating *Trema* species (and also in other non-nodulating Rosaceae spp. like *Prunus persica*, *Fragaria vesca* and *Malus domestica*), and that legume NFP proteins correspond to *Parasponia NFP2*. These data strongly suggest an importance of *NFP2* for the ability of *Parasponia*, but not closely related plants, to nodulate. Furthermore, the absence of *NFP2*, as well as other key symbiotic genes, in

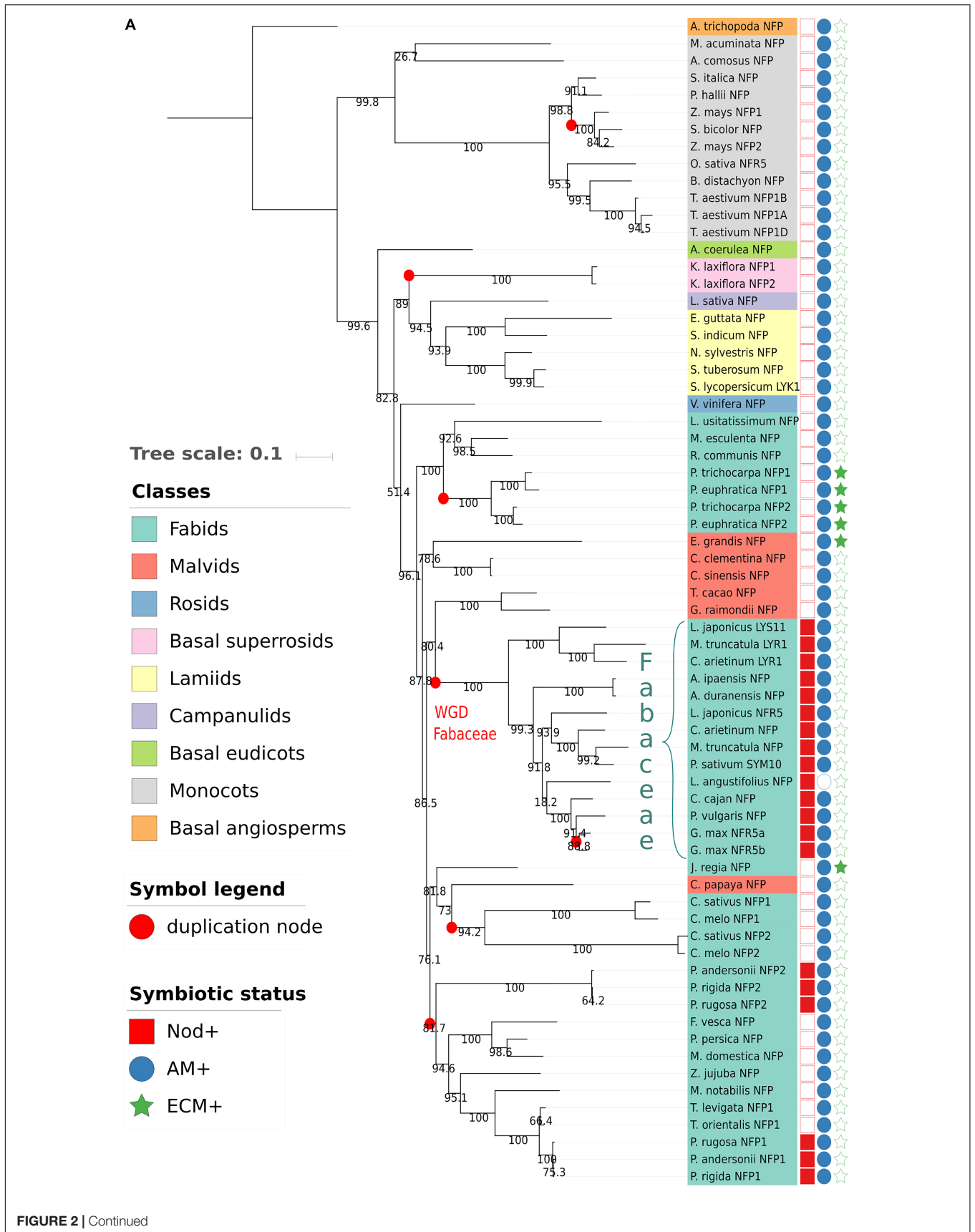


FIGURE 2 | Continued

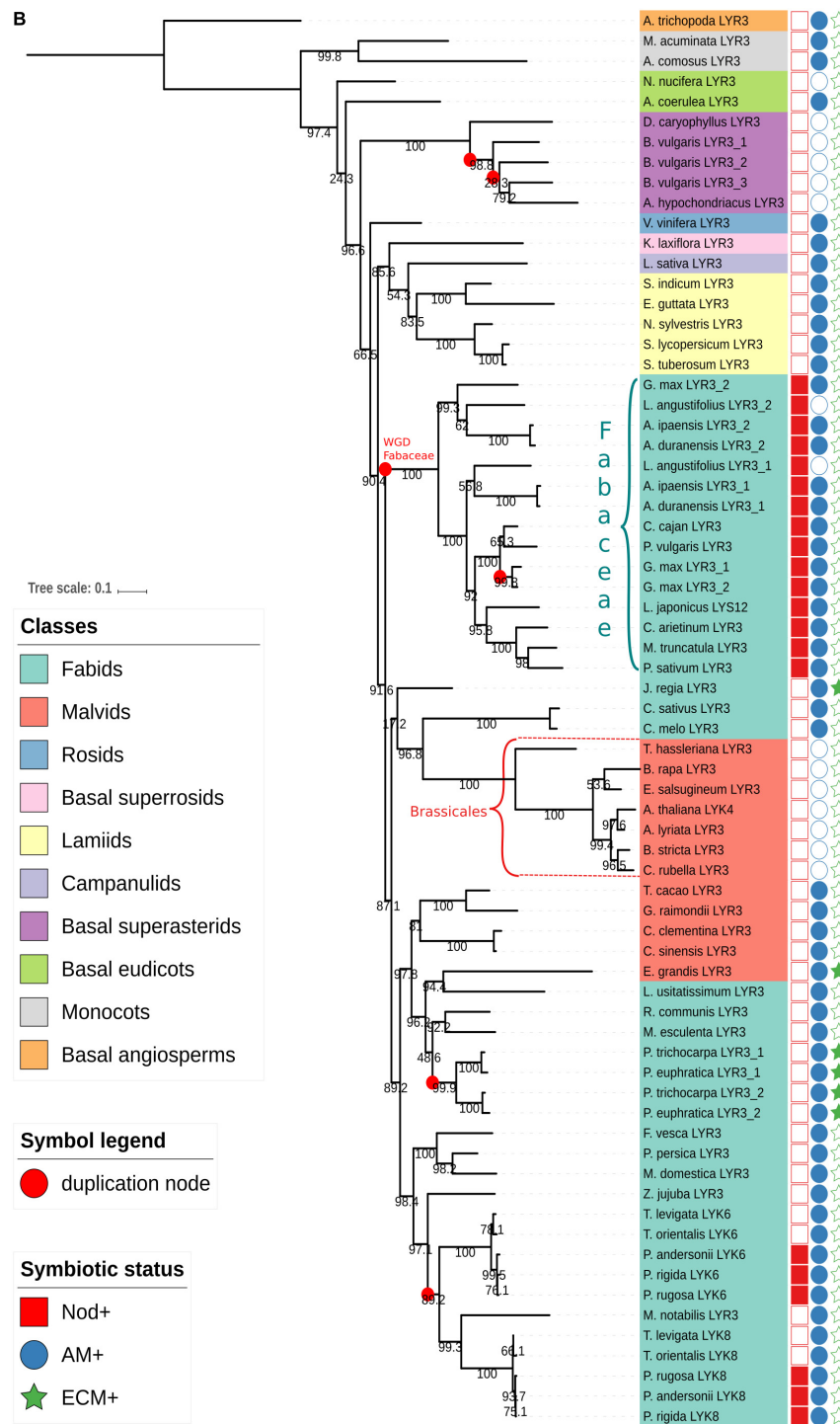


FIGURE 2 | Phylogenetic trees generated from approximately 60 Angiosperm sequences of **(A)** NFP proteins or **(B)** LYR3 proteins (**Supplementary Table S1** and **Supplementary Data Sheet S1**). The sequences were aligned by Mafft (v7.271) (Katoh et al., 2002) with the following parameters: –maxiterate 1000 –retree 1 –genafpair. Sites with more than 50% of gaps were pruned from the alignments. The phylogenetic trees were computed with IQ-Tree (Nguyen et al., 2015) with the following parameters: –nt AUTO –bb 1000 –alrt 1000. The trees and metadata were visualised with ItoI (Letunic and Bork, 2007). Branches with alrt support values (Anisimova and Gascuel, 2006) less than 0.75 were collapsed. Support values are displayed on the internal branches. The Amborella trichopoda LYR3 sequence was considered as an outgroup for the NFP tree, and the Amborella trichopoda LYR3 sequence was considered as an outgroup for the LYR3 tree. These proteins were chosen as outgroups as Amborella trichopoda is a basal Angiosperm species. An interactive view for the NFP tree is available at this url: <http://itol.embl.de/tree/14799102217475161526387035>. An interactive view for the LYR3 tree is available at this url: <http://itol.embl.de/tree/14799102217474321526387017>

Trema species, led van Velzen et al. (2018) to challenge the long-standing hypothesis on the evolution of nitrogen-fixing symbioses, pointing towards massive loss of nodulation rather than many events of parallel acquisition following a single hypothetical predisposition event in the common ancestor of the nitrogen-fixing clade.

It is also noteworthy that LYR3 was probably duplicated in a common ancestor of extant Rosales plant species, and two, divergent copies (LYK6 and LYK8) have been retained in both Parasponia and Trema species but not in other closely related species (van Velzen et al., 2018). Of these two proteins, LYK6 is more divergent between Parasponia and Trema species, suggesting different selection pressures on LYK6, but not LYK8, between these nodulating and non-nodulating plants. Taken together, ancestral events of gene duplication of NFP and LYR3 have usually been followed either by loss of one copy or by strong divergence of the two copies. In the case of preferential retention of both copies, which could have led to neofunctionalisation, NFP1 and NFP2 in Parasponia species are excellent candidates for such a scenario.

Consistent with the symbiotic roles of NFP proteins, plant species such as *Arabidopsis thaliana* that have lost the ability to establish the AM symbiosis, have lost NFP (Delaux et al., 2014). Exceptions to this rule are non-mycorrhizal lupin species, which have retained NFP to control the RL symbiosis. Thus in most *Brassicales* species, only LYR3 is present. However, in *Carica papaya*, which is a mycorrhizal species, LYR3 is absent, but NFP was found as reported before (Delaux et al., 2014). Also, only NFP was clearly found in Poaceae species such as rice, maize, and sorghum, but we found NFP and LYR3 in the monocots *Musa acuminata* and *Ananas comosus*, and in *Amborella trichopoda*, which is basal to both monocots and dicots.

Considering the trees of NFP and LYR3 proteins, each one has two clades in which sequences are phylogenetically close to each other and that are significantly phylogenetically distant from the other sequences in the tree. For NFP, these two clades correspond to *Fabaceae* and monocot proteins (Figure 2A), and for LYR3, they correspond to *Fabaceae* and *Brassicales* proteins (Figure 2B). This suggests that these groups of proteins have undergone significantly different evolutionary events, leading to specific and well conserved functions or properties. Nodulation is a likely explanation for the *Fabaceae* NFP proteins, while this divergence of *Brassicales* LYR3 proteins is correlated with absence of the AM symbiosis. Therefore, it is possible that the loss of the AM symbiosis was the driving force for a change of function for LYR3 in these plants. Since the *A. thaliana* LYR3 protein (called AtLYK4) controls chitin oligomer (CO) perception for immunity (Wan et al., 2012), a significant change to *Brassicales* LYR3 proteins could have been in terms of the ligand binding site predicted on LysM2 (Tanaka et al., 2013). The lack of LCO binding to LYR3 proteins from lupin species (Malkov et al., 2016) could also have evolved following loss of the AM symbiosis in these plants. LYR3 proteins of other non-AM species (*Dianthus caryophyllus*, *Beta vulgaris*, *Amaranthus hypochondriacus* and *Nelumbo nucifera*) do not group with the *Brassicales* LYR3 proteins, probably because of multiple, independent losses of the AM symbiosis in higher plants.

THE EVOLUTION OF KINASE-ACTIVE LYSM-RLKS WITH SYMBIOTIC ROLES

LysM-RLK proteins with an active kinase domain also control symbiosis in legume and non-legume plants. OsCERK1 in *Oryza sativa* controls the AM symbiosis (Miyata et al., 2014; Zhang et al., 2015). OsCERK1 has a common ancestor with MtLYK3 and LjNFR1 that control nodulation in *M. truncatula* and *L. japonicus*, respectively (Gough and Cullimore, 2011). Phylogeny studies suggest that the common ancestor of MtLYK3 and LjNFR1 became neofunctionalised relatively recently following two rounds of legume-specific tandem duplications (De Mita et al., 2014). There is evidence of positive selection pressure for 3 amino acid residues in LysM1 of LYK3 (De Mita et al., 2014), compatible with data showing that MtLYK3 intervenes in controlling host range specificity (Limpens et al., 2003; Smit et al., 2007), and suggesting a role of LysM1 in Nod factor recognition. Similarly, Sulima et al. found evidence for strong selection pressure on LysM1 of MtLYK3, and also on LysM2 of a paralogous protein, MtLYK2 (Sulima et al., 2017). In *P. sativum*, evidence was found that PsLykX, which is encoded in a region syntenic to MtLYK2 and MtLYK3, is under positive selection in the extracellular region, mainly LysM1 again, compatible with a role in Nod factor recognition. This is reinforced by the higher allelic variation in PsLykX compared to highly homologous proteins, and one haplotype of PsLykX corresponds to nodulation specificity for a certain Nod factor structure (Sulima et al., 2017).

Chimeric protein studies indicate that the kinase “YAQ” sequence in LjNFR1 is important for activation of downstream symbiotic signalling leading to nodulation (Nakagawa et al., 2011). Phylogenetic studies suggest that the YAQ motif has an ancestral origin, predating the origin of nodulation (De Mita et al., 2014). Consistent with this and probably extending the role of the YAQ motif to the AM symbiosis, a very similar motif (YAR) is present in OsCERK1. Furthermore, the kinase domain of OsCERK1 combined with the LysM domains of LjNFR1 in complementation tests, can trigger nodulation signalling (Miyata et al., 2014). In legumes, PsLykX and MtLYK4, which are the results of recent duplications in *M. truncatula* and pea, respectively (Limpens et al., 2003; Sulima et al., 2017), are “YAQ-less” proteins that might heterodimerise with “YAQ-type” LysM-RLKs. The YAQ motif was also lost in AtCERK1 (De Mita et al., 2014), and this is reminiscent of the loss of NFP proteins and the divergence in LYR3 proteins in *Brassicales* plants.

In addition to LCOs, plant LysM proteins can recognise peptidoglycan and chitin (Antolin-Llovera et al., 2014), and these or other structurally-related, secreted or surface constituents of microbial symbionts are candidate ligands for symbiotic LysM-RLKs. COs are proposed to be symbiotic AM fungal signals (Genre et al., 2013), and OsCERK1 is involved in the recognition of such molecules, although no binding to chitin or COs has been observed (Shimizu et al., 2010; Shinya et al., 2012). For the RL symbiosis, the YAQ-less “LYK-type” LysM-RLK LjEPR3 was reported to bind rhizobial exopolysaccharide and control nodulation (Kawaharada et al., 2015). Interestingly, although there are candidate LjEPR3 orthologs in many plants,

Parasponia spp. are notable exceptions (van Velzen et al., 2018), indicating that this protein is not indispensable for symbiosis.

SYMBIOTIC LYSM-RLKS CAN ALSO CONTROL IMMUNITY

Relationships between symbiosis and plant immunity are becoming more documented (Rey and Jacquet, 2018), and interestingly, both MtNFP and OsCERK1 have dual roles in symbiosis and immunity (Ben et al., 2013; Rey et al., 2013, 2015; Miyata et al., 2014; Zhang et al., 2015). In the case of OsCERK1 this is likely linked to CO perception (Carotenuto et al., 2017), and in legume plants LjLYS6/MtLYK9/PsLYK9 is a good candidate to have analogous roles to OsCERK1 (De Mita et al., 2014; Bozsoki et al., 2017; Leppyanen et al., 2018; our unpublished data). For MtNFP, one hypothesis is that it evolved to interact with both symbiotic and immune-related receptor proteins (Gough and Jacquet, 2013). Recently, LjLYS12 was reported to intervene in plant immunity (Fuechtbauer et al., 2018), suggesting that this LYR3 protein can also have a dual role in symbiosis and immunity.

More generally, people have asked whether the roles of LysM-RLKs in plant immunity diverged from symbiotic perception mechanisms or vice versa (Liang et al., 2014). Given that certain immune-type responses might be co-opted to facilitate symbiosis establishment (Limpens et al., 2015), then ancestral proteins could have had dual symbiotic and immune roles such that *Brassicales* LysM-RLKs have become subfunctionalised in immunity, while other proteins could have become subfunctionalised for symbiosis or retained the dual role. Indeed, the sequence divergence and biological roles of AtCERK1 and AtLYK4, can be interpreted as examples of subfunctionalisation in immunity.

FUTURE CHALLENGES

Other symbiotic plant-fungal interactions include ectomycorrhiza (ECM), orchid mycorrhiza, ericoid mycorrhiza, and fine root endophytes have recently been described (Orchard et al., 2017). There are also other nitrogen-fixing symbioses, between Frankia bacteria and actinorhizal plants, and between certain legume plants and rhizobia that cannot produce Nod factors. Future studies should determine whether LysM-RLKs play roles in these diverse types of symbiosis. By analogy with the quenching role of the LysM protein Ecp6 of the fungal tomato pathogen *Cladosporium fulvum* (de Jonge et al., 2010) future investigations should also address whether any rhizobial or AM fungal LysM proteins have evolved symbiotic roles (Zeng et al., 2018). Evolutionary and structural studies are also needed to help decipher ligand binding properties of symbiotic LysM-RLKs, and more knowledge is needed on evolutionary events that have led to protein regulation, both quantitatively and at subcellular and tissue-specific levels.

SEQUENCE FILES

Glossary of LysM-RLK proteins discussed in the text:

MtNFP: *Medicago truncatula* Nod Factor Perception, controls all Nod factor responses and nodulation, as well as plant immunity
 LjNFR5: the *Lotus japonicus* ortholog of MtNFP
 SLYK10: the *Solanum lycopersicum* ortholog of MtNFP, controls the AM symbiosis
 OsNFR5: the *Oryza sativa* ortholog of MtNFP
 MtLYR3: *Medicago truncatula* high affinity LCO binding protein with unknown biological function
 LjLYS12: the *Lotus japonicus* ortholog of MtLYR3
 AtLYK4: the *Arabidopsis thaliana* ortholog of MtLYR3, controls immunity
 MtLYK3: *Medicago truncatula* LysM receptor-like kinase3, controls rhizobial infection and nodulation
 LjNFR1: the *Lotus japonicus* ortholog of MtLYK3
 PslykX: a *Pisum sativum* LysM-RLK potentially involved in nodulation specificity for Nod factor structure
 AtCERK1: *Arabidopsis thaliana* Chitin Elicitor Receptor Kinase1, controls plant immunity
 OsCERK1: the *Oryza sativa* ortholog of AtCERK1, controls the AM symbiosis and plant immunity

AUTHOR CONTRIBUTIONS

CG and BL provided the sequences. CG, LC, BL, and J-JB analysed the sequences and wrote the text. LC constructed the phylogeny trees. CG and J-JB constructed the weblogs.

FUNDING

This work was supported by the “Laboratoire d’Excellence (LABEX)” TULIP (ANR-10-LABX-41), the ANR “NICE CROPS” (ANR-14-CE18-0008-02) and the ANR “WHEATSYM” (ANR-16-CE20-0025-01).

ACKNOWLEDGMENTS

We are grateful to Julie Cullimore for her helpful comments and discussions.

SUPPLEMENTARY MATERIAL

The Supplementary Material for this article can be found online at: <https://www.frontiersin.org/articles/10.3389/fpls.2018.00923/full#supplementary-material>

FIGURE S1 | Sequence logos generated using WebLogo software (Schneider and Stephens, 1990; Crooks et al., 2004), and approximately 60 Angiosperm protein sequences of NFP for each individual LysM domain of NFP proteins.

FIGURE S2 | Sequence logos generated using WebLogo software (Schneider and Stephens, 1990; Crooks et al., 2004), and approximately 60 Angiosperm protein sequences of LYR3 for each individual LysM domain of LYR3 proteins.

TABLE S1 | Lists of NFP and LYR3 sequences used in **Figures 1, 2** and **Supplementary Figures S1, S2**.**DATA SHEET S1** | Protein sequences, whole protein, LysM and kinase domain alignments, and tree files.

REFERENCES

- Anisimova, M., and Gascuel, O. (2006). Approximate likelihood-ratio test for branches: a fast, accurate, and powerful alternative. *Syst. Biol.* 55, 539–552. doi: 10.1080/10635150600755453
- Antolin-Llovera, M., Petutsching, E. K., Ried, M. K., Lipka, V., Nurnberger, T., Robatzek, S., et al. (2014). Knowing your friends and foes - plant receptor-like kinases as initiators of symbiosis or defence. *New Phytol.* 204, 791–802. doi: 10.1111/nph.13117
- Aoki, S., Uehara, K., Imafuku, M., Hasebe, M., and Ito, M. (2004). Phylogeny and divergence of basal angiosperms inferred from *APETALA3*- and *PISTILLATA*-like MADS-box genes. *J. Plant Res.* 117, 229–244. doi: 10.1007/s10265-004-0153-7
- Arrighi, J. F., Barre, A., Ben Amor, B., Bersoult, A., Soriano, L. C., Mirabella, R., et al. (2006). The *Medicago truncatula* lysin motif-receptor-like kinase gene family includes NFP and new nodule-expressed genes. *Plant Physiol.* 142, 265–279. doi: 10.1104/pp.106.084657
- Amor, B. B., Shaw, S. L., Oldroyd, G. E. D., Maillet, F., Penmetsa, R. V., Cook, D., et al. (2003). The NFP locus of *Medicago truncatula* controls an early step of Nod factor signal transduction upstream of a rapid calcium flux and root hair deformation. *Plant J.* 34, 495–506. doi: 10.1046/j.1365-313X.2003.01743.x
- Ben, C., Toueni, M., Montanari, S., Tardin, M. C., Fervel, M., Negahi, A., et al. (2013). Natural diversity in the model legume *Medicago truncatula* allows identifying distinct genetic mechanisms conferring partial resistance to *Verticillium* wilt. *J. Exp. Bot.* 64, 317–332. doi: 10.1093/jxb/ers337
- Bensmihen, S., de Billy, F., and Gough, C. (2011). Contribution of NFP LysM domains to the recognition of Nod factors during the *Medicago truncatula*/*Sinorhizobium meliloti* symbiosis. *PLoS One* 6:e26114. doi: 10.1371/journal.pone.0026114
- Bono, J., Fliegmann, J., Gough, C., and Cullimore, J. (2018). “Expression and function of the *Medicago truncatula* lysin motif receptor-like kinase (LysM-RLK) gene family in the legume-rhizobia symbiosis,” in *The Model Legume Medicago truncatula*, ed F. de Bruijn (Hoboken, NJ: John Wiley & Sons Inc.)
- Bozsoki, Z., Cheng, J., Feng, F., Gysel, K., Vinther, M., Andersen, K. R., et al. (2017). Receptor-mediated chitin perception in legume roots is functionally separable from Nod factor perception. *Proc. Natl. Acad. Sci. U.S.A.* 114, E8118–E8127. doi: 10.1073/pnas.1706795114
- Buendia, L., Wang, T., Girardin, A., and Lefebvre, B. (2016). The LysM receptor-like kinase SLYK10 regulates the arbuscular mycorrhizal symbiosis in tomato. *New Phytol.* 210, 184–195. doi: 10.1111/nph.13753
- Cannon, S. B., McKain, M. R., Harkess, A., Nelson, M. N., Dash, S., Deyholos, M. K., et al. (2015). Multiple polyploidy events in the early radiation of nodulating and nonnodulating legumes. *Mol. Biol. Evol.* 32, 193–210. doi: 10.1093/molbev/msu296
- Carotenuto, G., Chabaud, M., Miyata, K., Capozzi, M., Takeda, N., Kaku, H., et al. (2017). The rice LysM receptor-like kinase OsCERK1 is required for the perception of short-chain chitin oligomers in arbuscular mycorrhizal signaling. *New Phytol.* 214, 1440–1446. doi: 10.1111/nph.14539
- Crooks, G. E., Hon, G., Chandonia, J. M., and Brenner, S. E. (2004). WebLogo: a sequence logo generator. *Genome Res.* 14, 1188–1190. doi: 10.1101/gr.849004
- de Jonge, R., van Esse, H. P., Kombrink, A., Shinya, T., Desaki, Y., Bours, R., et al. (2010). Conserved fungal LysM effector Ecp6 prevents chitin-triggered immunity in plants. *Science* 329, 953–955. doi: 10.1126/science.1190859
- De Mita, S., Ronfort, J., McKhann, H. I., Poncet, C., El Malki, R., and Bataillon, T. (2007). Investigation of the demographic and selective forces shaping the nucleotide diversity of genes involved in nod factor signaling in *Medicago truncatula*. *Genetics* 177, 2123–2133. doi: 10.1534/genetics.107.076943
- De Mita, S., Streng, A., Bisseling, T., and Geurts, R. (2014). Evolution of a symbiotic receptor through gene duplications in the legume-rhizobium mutualism. *New Phytol.* 201, 961–972. doi: 10.1111/nph.12549
- Delaux, P. M., Varala, K., Edgar, P. P., Coruzzi, G. M., Pires, J. C., and Ane, J. M. (2014). Comparative phylogenomics uncovers the impact of symbiotic associations on host genome evolution. *PLoS Genet.* 10:e1004487. doi: 10.1371/journal.pgen.1004487
- Delaux, P. M., Radhakrishnan, G. V., Jayaraman, D., Cheem, J., Malbreil, M., Volkening, J. D., et al. (2015). Algal ancestor of land plants was preadapted for symbiosis. *Proc. Natl. Acad. Sci. U.S.A.* 112, 13390–13395. doi: 10.1073/pnas.1515426112
- Fliegmann, J., Canova, S., Lachaud, C., Uhlenbroich, S., Gascioli, V., Pichereaux, C., et al. (2013). Lipo-chitoooligosaccharidic symbiotic signals are recognized by LysM receptor-like kinase LYR3 in the legume *Medicago truncatula*. *ACS Chem. Biol.* 8, 1900–1906. doi: 10.1021/cb400369u
- Fliegmann, J., Jauneau, A., Pichereaux, C., Rosenberg, C., Gascioli, V., Timmers, A. C., et al. (2016). LYR3, a high-affinity LCO-binding protein of *Medicago truncatula*, interacts with LYK3, a key symbiotic receptor. *FEBS Lett.* 590, 1477–1487. doi: 10.1002/1873-3468.12191
- Fuechtbauer, W., Yunusov, T., Bozsoki, Z., Gavrin, A., James, E. K., Stougaard, J., et al. (2018). LYS12 LysM receptor decelerates *Phytophthora palmivora* disease progression in *Lotus japonicus*. *Plant J.* 93, 297–310. doi: 10.1111/tj.13785
- Genre, A., Chabaud, M., Balzergue, C., Puech-Pages, V., Novero, M., Rey, T., et al. (2013). Short-chain chitin oligomers from arbuscular mycorrhizal fungi trigger nuclear Ca²⁺ spiking in *Medicago truncatula* roots and their production is enhanced by strigolactone. *New Phytol.* 198, 179–189. doi: 10.1111/nph.12146
- Geurts, R., Xiao, T. T., and Reinhold-Hurek, B. (2016). What does it take to evolve a nitrogen-fixing endosymbiosis? *Trends Plant Sci.* 21, 199–208. doi: 10.1016/j.tplants.2016.01.012
- Gough, C., and Cullimore, J. (2011). Lipo-chitoooligosaccharide signaling in endosymbiotic plant-Microbe interactions. *Mol. Plant Microbe Interact.* 24, 867–878. doi: 10.1094/MPMI-01-11-0019
- Gough, C., and Jacquet, C. (2013). Nod factor perception protein carries weight in biotic interactions. *Trends Plant Sci.* 18, 566–574. doi: 10.1016/j.tplants.2013.06.001
- Harikrishnan, S. L., Pucholt, P., and Berlin, S. (2015). Sequence and gene expression evolution of paralogous genes in willows. *Sci. Rep.* 5:18662. doi: 10.1038/srep18662
- Katoh, K., Misawa, K., Kuma, K., and Miyata, T. (2002). MAFFT: a novel method for rapid multiple sequence alignment based on fast fourier transform. *Nucleic Acids Res.* 30, 3059–3066. doi: 10.1093/nar/gkf436
- Kawaharada, Y., Kelly, S., Nielsen, M. W., Hjulster, C. T., Gysel, K., Muszynski, A., et al. (2015). Receptor-mediated exopolysaccharide perception controls bacterial infection. *Nature* 523, 308–312. doi: 10.1038/nature14611
- Larkin, M. A., Blackshields, G., Brown, N. P., Chenna, R., McGettigan, P. A., McWilliam, H., et al. (2007). Clustal W and clustal X version 2.0. *Bioinformatics* 23, 2947–2948. doi: 10.1093/bioinformatics/btm404
- Lefebvre, B., Klaus-Heisen, D., Pietraszewska-Bogiel, A., Herve, C., Camut, S., Auriac, M. C., et al. (2012). Role of N-Glycosylation sites and CXC motifs in trafficking of *Medicago truncatula* nod factor perception protein to plasma membrane. *J. Biol. Chem.* 287, 10812–10823. doi: 10.1074/jbc.M111.281634
- Leppyanen, I. V., Shakhnazarova, V. Y., Shtark, O. Y., Vishnevskaya, N. A., Tikhonovich, I. A., and Dolgikh, E. A. (2018). Receptor-like kinase LYK9 in *Pisum sativum*, L. Is the CERK1-like receptor that controls both plant immunity and AM symbiosis development. *Int. J. Mol. Sci.* 19:E8. doi: 10.3390/ijms19010008
- Letunic, I., and Bork, P. (2007). Interactive tree of life (iTOL): an online tool for phylogenetic tree display and annotation. *Bioinformatics* 23, 127–128. doi: 10.1093/bioinformatics/btl529
- Liang, Y., Toth, K., Cao, Y. R., Tanaka, K., Espinoza, C., and Stacey, G. (2014). Lipochitoooligosaccharide recognition: an ancient story. *New Phytol.* 204, 289–296. doi: 10.1111/nph.12898
- Limpens, E., Franken, C., Smit, P., Willemse, J., Bisseling, T., and Geurts, R. (2003). LysM domain receptor kinases regulating rhizobial Nod factor-induced infection. *Science* 302, 630–633. doi: 10.1126/science.1090074
- Limpens, E., van Zeijl, A., and Geurts, R. (2015). Lipochitoooligosaccharides modulate plant host immunity to enable endosymbioses. *Annu. Rev. Phytopathol.* 53, 311–334. doi: 10.1146/annurev-phyto-080614-120149
- Lohmann, G. V., Shimoda, Y., Nielsen, M. W., Jorgensen, F. G., Grossmann, C., Sandal, N., et al. (2010). Evolution and regulation of the lotus japonicus LysM

- receptor gene family. *Mol. Plant Microbe Interact.* 23, 510–521. doi: 10.1094/MPMI-23-4-0510
- Madsen, E. B., Antolin-Llovera, M., Grossmann, C., Ye, J. Y., Vieweg, S., Broghammer, A., et al. (2011). Autophosphorylation is essential for the *in vivo* function of the *Lotus japonicus* Nod factor receptor 1 and receptor-mediated signalling in cooperation with Nod factor receptor 5. *Plant J.* 65, 404–417. doi: 10.1111/j.1365-313X.2010.04431.x
- Madsen, E. B., Madsen, L. H., Radutoiu, S., Olbryt, M., Rakwalska, M., Szczyglowski, K., et al. (2003). A receptor kinase gene of the LysM type is involved in legume perception of rhizobial signals. *Nature* 425, 637–640. doi: 10.1038/nature02045
- Maillet, F., Poinso, V., Andre, O., Puech-Pages, V., Haouy, A., Gueunier, M., et al. (2011). Fungal lipochitoooligosaccharide symbiotic signals in arbuscular mycorrhiza. *Nature* 469, 58–63. doi: 10.1038/nature09622
- Malkov, N., Fliegmann, J., Rosenberg, C., Gasciolli, V., Timmers, A. C. J., Nurisso, A., et al. (2016). Molecular basis of lipo-chitoooligosaccharide recognition by the lysin motif receptor-like kinase LYR3 in legumes. *Biochem. J.* 473, 1369–1378. doi: 10.1042/BCJ20160073
- Miyata, K., Hayafune, M., Kobae, Y., Kaku, H., Nishizawa, Y., Masuda, Y., et al. (2016). Evaluation of the role of the LysM receptor-like kinase, OsNFR5/OsRLK2 for AM symbiosis in rice. *Plant Cell Physiol.* 57, 2283–2290. doi: 10.1093/pcp/pcw144
- Miyata, K., Kozaki, T., Kouzai, Y., Ozawa, K., Ishii, K., Asamizu, E., et al. (2014). The bifunctional plant receptor, OsCERK1, regulates both chitin-triggered immunity and arbuscular mycorrhizal symbiosis in rice. *Plant Cell Physiol.* 55, 1864–1872. doi: 10.1093/pcp/pcu129
- Moling, S., Pietraszewska-Bogiel, A., Postma, M., Fedorova, E., Hink, M. A., Limpens, E., et al. (2014). Nod factor receptors form heteromeric complexes and are essential for intracellular infection in *Medicago* nodules. *Plant Cell* 26, 4188–4199. doi: 10.1105/tpc.114.129502
- Nakagawa, T., Kaku, H., Shimoda, Y., Sugiyama, A., Shimamura, M., Takanashi, K., et al. (2011). From defense to symbiosis: limited alterations in the kinase domain of LysM receptor-like kinases are crucial for evolution of legume-*Rhizobium* symbiosis. *Plant J.* 65, 169–180. doi: 10.1111/j.1365-313X.2010.04411.x
- Nguyen, L. T., Schmidt, H. A., von Haeseler, A., and Minh, B. Q. (2015). IQ-TREE: a fast and effective stochastic algorithm for estimating maximum-likelihood phylogenies. *Mol. Biol. Evol.* 32, 268–274. doi: 10.1093/molbev/msu300
- Op den Camp, R., Streng, A., De Mita, S., Cao, Q., Polone, E., Liu, W., et al. (2010). LysM-type mycorrhizal receptor recruited for rhizobium symbiosis in nonlegume *Parasponia*. *Science* 331, 909–912. doi: 10.1126/science.1198181
- Orchard, S., Hilton, S., Bending, G. D., Dickie, I. A., Standish, R. J., Gleeson, D. B., et al. (2017). Fine endophytes (*Glomus tenue*) are related to Mucoromycotina, not Glomeromycota. *New Phytol.* 213, 481–486. doi: 10.1111/nph.14268
- Pietraszewska-Bogiel, A., Lefebvre, B., Koini, M. A., Klaus-Heisen, D., Takken, F. L. W., Geurts, R., et al. (2013). Interaction of *Medicago truncatula* lysin motif receptor-like kinases, NFP and LYK3, produced in *Nicotiana benthamiana* induces defence-like responses. *PLoS One* 8:e65055. doi: 10.1371/journal.pone.0065055
- Radutoiu, S., Madsen, L. H., Madsen, E. B., Jurkiewicz, A., Fukai, E., Quistgaard, E. M., et al. (2007). LysM domains mediate lipochitin-oligosaccharide recognition and *Nfr* genes extend the symbiotic host range. *EMBO J.* 26, 3923–3935. doi: 10.1038/sj.emboj.7601826
- Rey, T., Chatterjee, A., Buttay, M., Toulotte, J., and Schornack, S. (2015). *Medicago truncatula* symbiosis mutants affected in the interaction with a biotrophic root pathogen. *New Phytol.* 206, 497–500. doi: 10.1111/nph.13233
- Rey, T., and Jacquet, C. (2018). Symbiosis genes for immunity and vice versa. *Curr. Opin. Plant Biol.* 44, 64–71. doi: 10.1016/j.pbi.2018.02.010
- Rey, T., Nars, A., Bonhomme, M., Bottin, A., Huguet, S., Balzergue, S., et al. (2013). NFP, a LysM protein controlling Nod factor perception, also intervenes in *Medicago truncatula* resistance to pathogens. *New Phytol.* 198, 875–886. doi: 10.1111/nph.12198
- Schneider, T. D., and Stephens, R. M. (1990). Sequence logos: a new way to display consensus sequences. *Nucleic Acids Res.* 18, 6097–6100. doi: 10.1093/nar/18.20.6097
- Shimizu, T., Nakano, T., Takamizawa, D., Desaki, Y., Ishii-Minami, N., Nishizawa, Y., et al. (2010). Two LysM receptor molecules, CEBiP and OsCERK1, cooperatively regulate chitin elicitor signaling in rice. *Plant J.* 64, 204–214. doi: 10.1111/j.1365-313X.2010.04324.x
- Shinya, T., Motoyama, N., Ikeda, A., Wada, M., Kamiya, K., Hayafune, M., et al. (2012). Functional characterization of CEBiP and CERK1 homologs in *Arabidopsis* and rice reveals the presence of different chitin receptor systems in plants. *Plant Cell Physiol.* 53, 1696–1706. doi: 10.1093/pcp/pcs113
- Shiu, S. H., and Bleeker, A. B. (2001). Receptor-like kinases from *Arabidopsis* form a monophyletic gene family related to animal receptor kinases. *Proc. Natl. Acad. Sci. U.S.A.* 98, 10763–10768. doi: 10.1073/pnas.181141598
- Smit, P., Limpens, E., Geurts, R., Fedorova, E., Dolgikh, E., Gough, C., et al. (2007). *Medicago* LYK3, an entry receptor in rhizobial nodulation factor signaling. *Plant Physiol.* 145, 183–191. doi: 10.1104/pp.107.100495
- Sorensen, K. K., Simonsen, J. B., Maolanon, N. N., Stougaard, J., and Jensen, K. J. (2014). Chemically synthesized 58-mer lysm domain binds lipochitin oligosaccharide. *Chembiochem* 15, 2097–2105. doi: 10.1002/cbic.201402125
- Sulima, A. S., Zhukov, V. A., Afonin, A. A., Zhernakov, A. I., Tikhonovich, I. A., and Lutova, L. A. (2017). Selection signatures in the first exon of paralogous receptor kinase genes from the *sym2* region of the *Pisum sativum*, L. Genome. *Front. Plant Sci.* 8:1957. doi: 10.3389/fpls.2017.01957
- Tanaka, K., Nguyen, C., Liang, Y., Cao, Y., and Stacey, G. (2013). Role of LysM receptors in chitin-triggered plant innate immunity. *Plant Signal. Behav.* 8:e22598. doi: 10.4161/psb.22598
- van Velzen, R., Holmer, R., Bu, F., Rutten, L., van Zeijl, A., Liu, W., et al. (2018). Comparative genomics of the nonlegume *Parasponia* reveals insights into evolution of nitrogen-fixing rhizobium symbioses. *Proc. Natl. Acad. Sci. U.S.A.* 115, E4700–E4709. doi: 10.1073/pnas.1721395115
- Wan, J. R., Tanaka, K., Zhang, X. C., Son, G. H., Brechenmacher, L., Nguyen, T. H., et al. (2012). LYK4, a lysin motif receptor-like kinase, is important for chitin signaling and plant innate immunity in *Arabidopsis*. *Plant Physiol.* 160, 396–406. doi: 10.1104/pp.112.201699
- Zeng, T., Holmer, R., Hontelez, J., Te Lintel-Hekkert, B., Marufu, L., de Zeeuw, T., et al. (2018). Host- and stage-dependent secretome of the arbuscular mycorrhizal fungus *Rhizophagus irregularis*. *Plant J.* 94, 411–425. doi: 10.1111/tpj.13908
- Zhang, X. W., Dong, W. T., Sun, J. H., Feng, F., Deng, Y. W., He, Z. H., et al. (2015). The receptor kinase *CERK1* has dual functions in symbiosis and immunity signalling. *Plant J.* 81, 258–267. doi: 10.1111/tpj.12723

Conflict of Interest Statement: The authors declare that the research was conducted in the absence of any commercial or financial relationships that could be construed as a potential conflict of interest.

Copyright © 2018 Gough, Cottret, Lefebvre and Bono. This is an open-access article distributed under the terms of the Creative Commons Attribution License (CC BY). The use, distribution or reproduction in other forums is permitted, provided the original author(s) and the copyright owner(s) are credited and that the original publication in this journal is cited, in accordance with accepted academic practice. No use, distribution or reproduction is permitted which does not comply with these terms.