



HAL
open science

Enhancing the performance of vehicle cooling modules using diffusers

H. El Hage, Cathy Castelain, J. Faraj, F. Hachem, M. Ramadan, M. Khaled

► To cite this version:

H. El Hage, Cathy Castelain, J. Faraj, F. Hachem, M. Ramadan, et al.. Enhancing the performance of vehicle cooling modules using diffusers. *Case Studies in Thermal Engineering*, 2018, 11, pp.120-124. <10.1016/j.csite.2018.01.006>. <hal-02364790>

HAL Id: hal-02364790

<https://hal.science/hal-02364790v1>

Submitted on 9 Feb 2023

HAL is a multi-disciplinary open access archive for the deposit and dissemination of scientific research documents, whether they are published or not. The documents may come from teaching and research institutions in France or abroad, or from public or private research centers.

L'archive ouverte pluridisciplinaire **HAL**, est destinée au dépôt et à la diffusion de documents scientifiques de niveau recherche, publiés ou non, émanant des établissements d'enseignement et de recherche français ou étrangers, des laboratoires publics ou privés.



HAL Authorization

Enhancing the performance of vehicle cooling modules using diffusers

H. El Hage¹, C. Castelain², J. Faraj¹, F. Hachem³, M. Ramadan¹, and M Khaled^{1,4,*}

¹Energy and Thermo-Fluid Group, School of Engineering, International University of Beirut BIU, Beirut–Lebanon

²Heat Transfer and Energy Group, Polytech’Nantes, University of Nantes, Nantes–France

³Energy and Thermo-Fluid group, School of Engineering, Lebanese International University LIU, Bekaa–Lebanon

⁴University Paris Diderot, Sorbonne Paris Cité, Interdisciplinary Energy Research Institute (PIERI), Paris-France

**Corresponding author: mahmoud.khaled@liu.edu.lb*

Abstract

In this work, numerical results focused on the enhancement of water-air heat exchanger thermal performance are presented. New designs consisting of using diffusers between the front end openings of the vehicle and the first exchanger facing the airflow are suggested. The diffuser will reduce the velocity magnitude but over a larger area through the exchanger. This will reduce the air velocity non-uniformity upstream the exchanger and then increase its thermal performance. An in-house code is established to evaluate the thermal performance of the exchanger based on known parameters; namely, the ratio of the area of the air inlet opening to the area of the exchanger, the distance between the air inlet opening and the first exchanger at its downstream, the angle of the diffuser, and the water and air mass flow rates. It was shown that the thermal performance of the exchanger can be enhanced by up to 67 % when the diffuser is present depending on the configuration.

Keywords: Diffuser, Energy consumption, Cooling module, Heat exchanger, Thermal performance, Air velocity uniformity.

1. Introduction

Tubes-and-fins heat exchangers are cross-flow heat exchangers composed of numerous tubes of elliptical geometry over which several continuous parallel fins are positioned. These exchangers are the most commonly used water-air heat exchangers where water flows through the elliptical-section tube and air through the exchanger fins.

Studies on the effect of air velocity non-uniformity on the thermal performance of liquid-air heat exchangers are present in the literature for different types of heat exchangers and different ranges of applications and operational parameters [1-6]. Particularly, Khaled et al. [7-8] studied the effect of air velocity nonuniformity on the performance of water air heat exchangers of tubes and fins types used mainly in automotive applications. They have concluded that the nonuniformity of air velocity distribution upstream of a tubes-and-fins air-water heat exchanger can decrease its thermal performance up to 35 % when the standard deviation of the distribution is equal to its mean value. From an optimization point of view, the above mentioned conclusion means that to increase the thermal performance of a heat exchanger, the non-uniformity upstream of it should be decreased. This result is the motivation of this work in which a new concept allowing to optimize the thermal performance of water-air heat exchangers is presented. The originality of the present work resides mainly in the newly suggested concept along with the use of an in-house computational code that uses the appropriate modeling to deal with calculations involving non-uniformity. The main idea of the suggested concept consists of using a diffuser between the front end air opening and the first exchanger at its downstream (Figure 1).

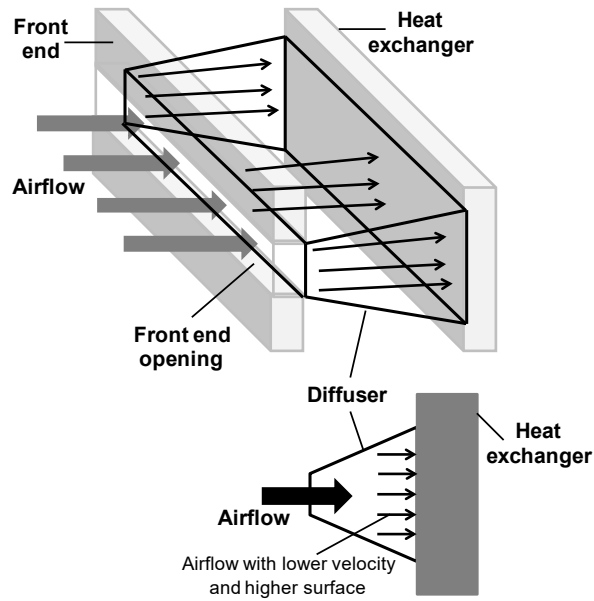


Figure 1: New suggested design.

Although the use of a diffuser upstream of a heat exchanger will reduce the velocity magnitude upstream the exchanger, the air velocity distribution upstream of the exchanger considered over the entire area of the exchanger will have the same flow rate as at the air inlet opening (the same mean velocity) but with lower standard deviation (or nonuniformity). The decrease of the nonuniformity of the air velocity distribution upstream of the exchanger will increase its thermal performance. To quantify the performance enhancement associated with the use of the diffuser, a parametric analysis that comprises the effect of many parameters will be considered in section 3. These parameters are mainly the ratio of the area of the air inlet opening to the area of the exchanger, the distance between the air inlet opening and the first exchanger at its downstream (which is equal to the length of the diffuser), the angle of the diffuser, and the water and air mass flow rates. Calculations are performed with an in-house computational code that will be presented in section 2.

2. In-house computational code

Details on the code concepts and operational algorithm can be found in [7-9]. Below a short account will be exposed.

The principle of the method consists in dividing the calculation domain into smaller sub-domains called Representative Cell (RC) representing the different non-uniform conditions that the sub-domains may undergo (Figure 2).

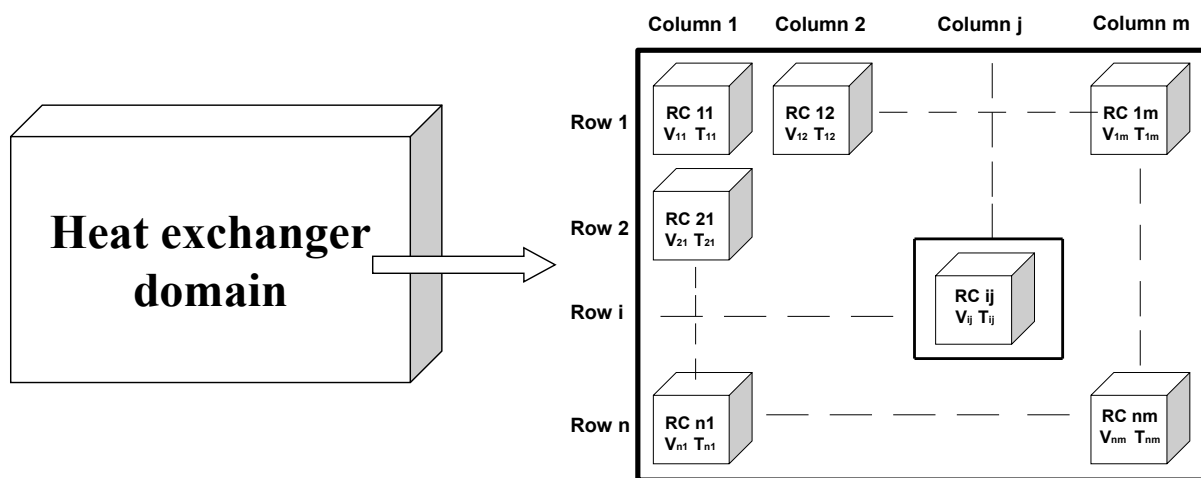


Figure 2: Division of the heat exchanger domain into sub-domains (representative cells).

The global heat exchanger problem is thus divided into several local problems at each RC. In other terms, the global energy balance problem is converted to several local energy balance problem at each RC. The results of a cell are utilized as boundary condition for the next cell. The temperature at each RC is then calculated and thus the distribution of the temperature is obtained over the entire domain. The outlet temperature of the heat exchanger is calculated from the values of the temperature at the boundary RC of the domain.

The code was validated against experiments and shows very good agreement qualitatively and quantitatively [8].

3. Results and Observations

In this section, the aforementioned code is employed to perform parametric study on the thermal performance enhancement of a heat exchanger subjected to the new design integrating a diffuser in the cooling module. Figure 3 shows a schematic of the exchanger and the associated diffuser including the main parameters that will be tested.

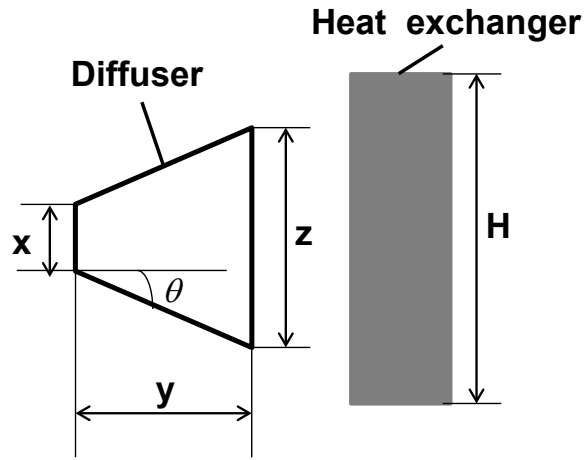


Figure 3: Schematic including the parameters to be tested.

In Figure 3, x is the height of the small cross-sectional area of the diffuser (considered equal to front end inlet air openings), y is the length of the diffuser in the direction of the flow, z is the height of the large cross-sectional area of the diffuser, H is the height of the exchanger and θ is the angle of the diffuser.

The height of the large cross-sectional area of the diffuser is related to the height of the small cross-sectional area by the following relation:

$$z = x + 2y \tan \theta \quad (5)$$

The different parameters defined above are normalized with respect to the heat exchanger length as follows:

$$X = \frac{x}{H} \quad (6)$$

$$Y = \frac{y}{H} \quad (7)$$

$$Z = \frac{z}{H} \quad (8)$$

Since the height of the large cross-sectional area should not exceed the heat exchanger height, there is a maximum for the length of the diffuser although it will be a sufficient space between the exchanger and front end openings of the vehicle.

A first set of calculations is carried out for a water flow rate of 6000 L/h and an air velocity of 7 m/s. The water and air inlet temperatures are set equal to 90 °C and 20 °C respectively. Ratios X (height of the small cross-sectional area of the diffuser to the HX height) of 0.2, 0.3, 0.4, and 0.5 are considered. For each X , the ratio Y (length of the diffuser to the HX height) is varied from 0 to its maximum possible value. The diffuser angle is set equal to 30°. Figure 4 shows the variation of the HX thermal performance as well as the performance enhancement calculated in each case with respect to the case without diffuser (which corresponds to $Y = 0$) in function of X and Y .

As shown in Figure 4, the thermal performance of the exchanger increases as Y increases and as X increases. On the other hand, the enhancement of the thermal performance increases as Y increases but decreases as X increases. As illustration for $X = 0.2$ (the air inlet opening corresponds to 20 % of the heat exchanger area), when Y varies from 0 to its maximum of 0.7, the thermal performance of the exchanger increases from 16.3 to 23.1 kW. For $X = 0.5$, when Y varies from 0 to its maximum of 0.4, the HX thermal performance increases from 39.6 to 79 kW.

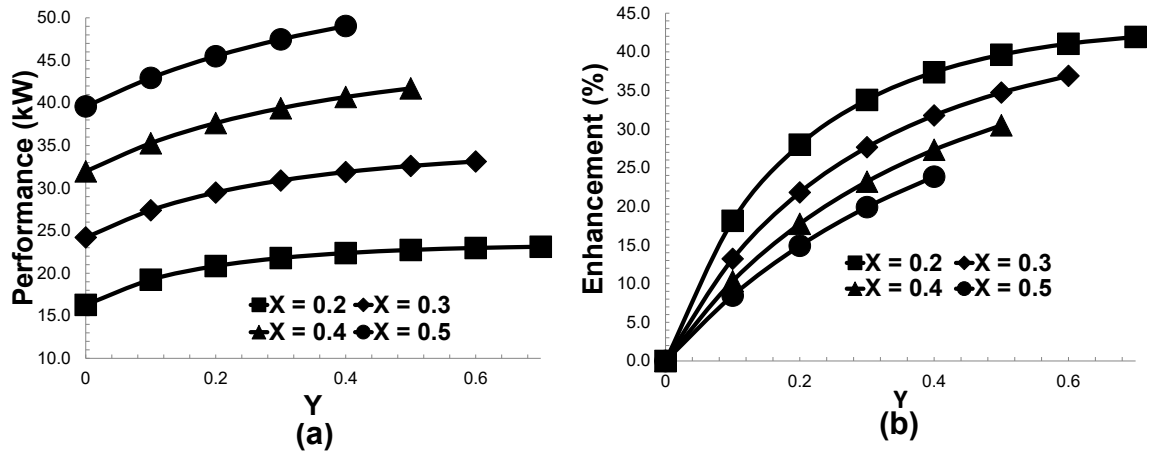


Figure 4: Variation of the (a) HX thermal performance and (b) enhancement in function of X and Y .

For $X = 0.2$, the enhancement of the thermal performance increases from 0 to 41.9 % when Y increases from 0 to its maximum value of 0.7. For $X = 0.5$, the enhancement increases from 0 to 23.8 % when Y varies from 0 to its maximum value of 0.4.

Indeed, when the diffuser is used and as mentioned previously, the non-uniformity in the velocity distribution upstream of the heat exchanger decreases (Please see Figures 5-a and 5-b) and then the thermal performance of the exchanger increases. Now when Y increases, the reduction in the non-uniformity of the velocity distribution upstream of the heat exchanger is increased (as shown in Figures 5-a, 5-b, and 5-c) and then the thermal performance is increased. Figure 5-a corresponds to the case without diffuser (since $Y=0$). When X increases, the mass flow rate of airflow across the heat exchanger increases and then the thermal performance increases. These features explain the trends shown in Figure 4-a.

Now to explain the increase of the enhancement with respect to Y and its decrease with respect to X , the variation of the relative standard deviation of velocity distribution (the standard deviation of velocity distribution in each case divided by that obtained without the use of the diffuser) with respect to X and Y is shown in Figure 6.

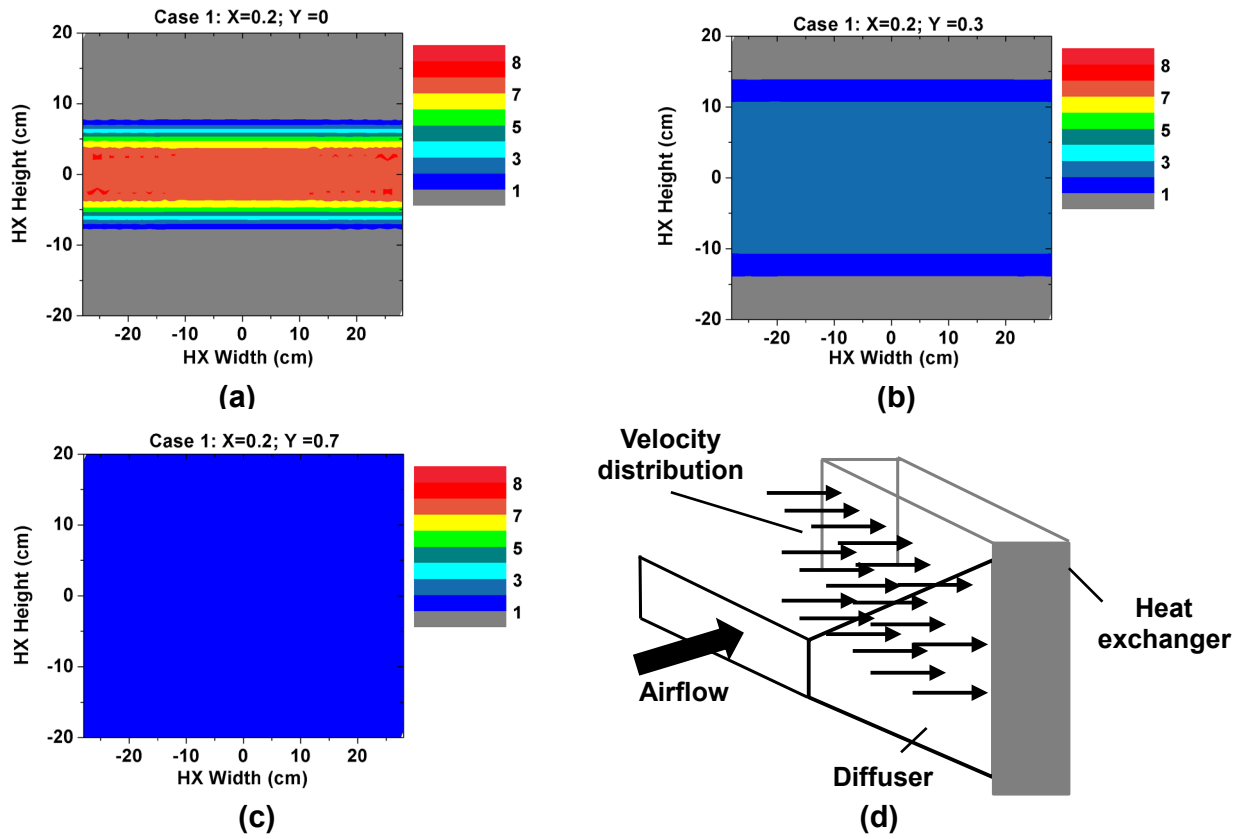


Figure 5: Velocity distribution (in m/s) upstream of the heat exchanger for (a) $X = 0.2$ and $Y = 0$; (b) $X = 0.2$ and $Y = 0.3$; and (c) $X = 0.2$ and $Y = 0.7$ and (d) location of the velocity distribution.

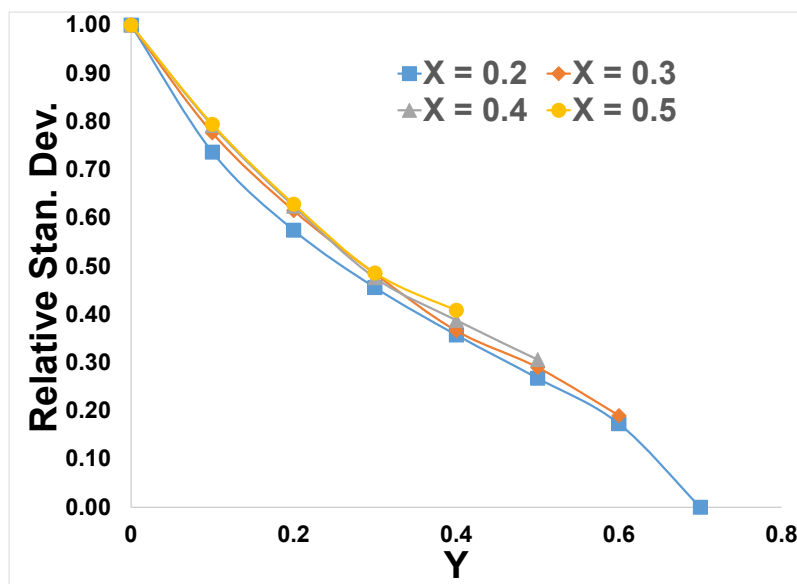


Figure 6: Variation of the relative standard deviation of velocity distribution in function of Y.

As shown in the figure, the relative standard deviation increases when Y increases which causes the enhancement of the thermal performance to increase with Y . However, the relative standard deviation decreases when X increases which makes the enhancement decreasing with X .

A second set of calculations is performed for a water inlet temperature of $90\text{ }^{\circ}\text{C}$ and an air of $20\text{ }^{\circ}\text{C}$. The ratio of the length of the diffuser to the HX height Y is set equal to 0.3 . The water flow rate is set equal to 9000 L/h and the air velocity to 7 m/s . Figure 7 shows the variation of the HX performance enhancement calculated in each case with respect to the case without diffuser (which corresponds to $Y = 0$) in function of the diffuser angle for different ratios of the height of the small cross-sectional area of the diffuser to the HX height X .

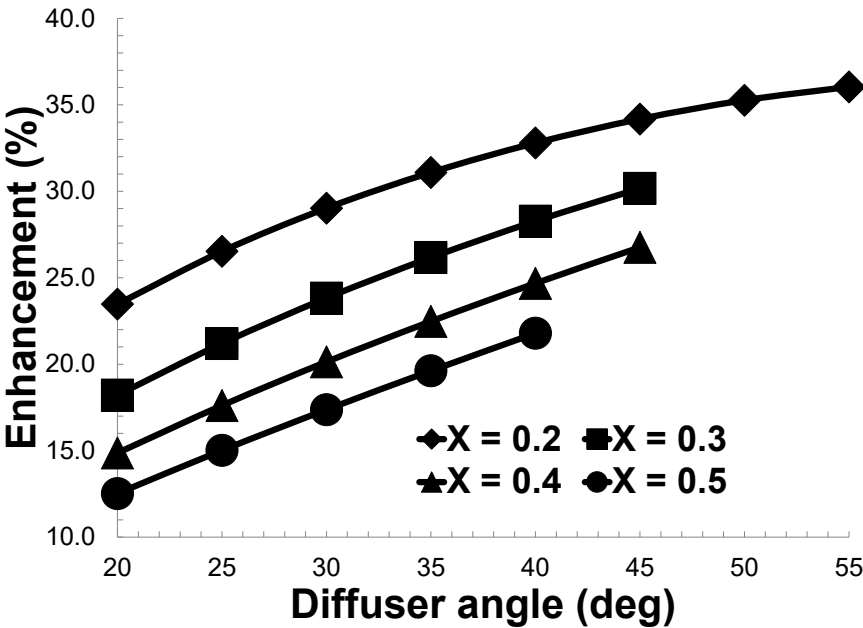


Figure 7: Variation of the thermal performance enhancement in function of the diffuser angle for different X .

As shown in the Figure, the thermal performance enhancement increases as the diffuser angle increases for a constant diffuser small area and constant distance between the air inlet opening

and the exchanger. As illustration for $X = 0.2$, when the diffuser angle increases from 20 to 55 deg, the thermal performance enhancement increases from 23.5 to 36 %. This enhancement is smaller at higher X . For $X = 0.5$ par example, the thermal performance enhancement increases from 12.5 to 21.8 % when the diffuser angle increases from 20 to 40 deg. It should be noticed in Figure 5 that there is a maximum for the diffuser angle related to each value of X otherwise the diffuser outlet section will be larger than that of the exchanger.

4- Closure

This paper suggested a new design for improving the performance of a water-air heat exchanger subjected to non-uniform air velocity distribution induced by the geometry of the air inlet openings. The new design consists on using a diffuser between the front end openings of a vehicle and the first exchanger facing the airflow (most commonly the condenser).

It was shown that the thermal performance of the exchanger is enhanced by up to 67 % when the diffuser is present.

References

- [1] Q. Zhang, S. Qin, and R. Ma, Simulation and experimental investigation of the wavy fin-and-tube intercooler, *Case Studies in Thermal Engineering*, 8 (2016) 32-40.
- [2] S. Tamna, Y. Kaewkohkiat, S. Skullong, and P. Promvonge, Heat transfer enhancement in tubular heat exchanger with double V-ribbed twisted-tapes, *Case Studies in Thermal Engineering*, 7 (2016) 14-24.
- [3] Mahmoud Khaled, Mohamad Ramadan, Heating fresh air by hot exhaust air of HVAC systems, *Case Studies in Thermal Engineering*, 8 (2016) 398-402
- [4] A. Raj Singh Suri, A. Kumar, and R. Maithani, Effect of square wings in multiple square perforated twisted tapes on fluid flow and heat transfer of heat exchanger tube, *Case Studies in Thermal Engineering*, 10 (2017) 28-43.
- [5] M. Izzedine, S. Adjibade, A. Thiam, C. Awanto, and D. Azilinson, Experimental analysis of diffusion absorption refrigerator driven by electrical heater and engine exhaust gas, *Case Studies in Thermal Engineering*, 10 (2017) 255-261.
- [6] A.M. Hussein, H.K. Dawood, R.A. Bakara, and K. Kadirgamaa, Numerical study on turbulent forced convective heat transfer using nanofluids TiO₂ in an automotive cooling system, *Case Studies in Thermal Engineering*, 9 (2017) 72-78
- [7] M. Ramadan, M. Gad El Rab, and M. Khaled, Parametric analysis of air–water heat recovery concept applied to HVAC systems: Effect of mass flow rates, *Case Studies in Thermal Engineering*, 6 (2015) 61-68.
- [8] M. Ramadan, S. Ali, H. Bazzi, and M. Khaled, New hybrid system combining TEG, condenser hot air and exhaust airflow of all-air HVAC systems, *Case Studies in Thermal Engineering*, 10 (2017) 154-160.
- [9] M. Khaled, M. Ramadan, H. El Hage, A. Elmarakbi, F. Harambat, and H. Peerhossaini, Review of underhood aerothermal management: towards vehicle simplified models, *Applied Thermal Engineering*, 73 (2014) 840-856.
- [10] M. Khaled, F. Mangi , H. El Hage, F. Harambat, and H. Peerhossaini, Fan air flow analysis and Heat Transfer Enhancement of Vehicle Underhood Cooling System – Towards a New Control Approach for Fuel Consumption Reduction, *Applied Energy*, 91 (2012) 439-450.
- [11] M. Khaled, A. Al Shaer, F. Hachem, F. Harambat, and H. Peerhossaini, Effects of ground vehicle inclination on underhood compartment cooling, *International Journal of Automotive Technology*, 13 (2012) 895-904.
- [12] J.N. Mao, H.X. Chen, H. Jia, Y.Z. Wang, H.M. Hu, Effect of air-side flow maldistribution on thermal-hydraulic performance of the multi-louvered fin and tube heat exchanger, *International Journal of Thermal Sciences*, 73 (2013) 46-57.
- [13] M. Khaled, F. Harambat, and H. Peerhossaini, Analytical and empirical determination of thermal performance of louvered heat exchanger – effects of air flow statistics, *International Journal of Heat and Mass Transfer*, 54 (2011), 356-365.

[14] M. Khaled, M. Ramadan, A. Shaito, H. El Hage, F. Harambat, and H. Peerhossaini, Parametric Analysis of Heat Exchanger Thermal Performance in Complex Geometries—Effect of Air Velocity and Water Flow Distributions, *Heat Transfer Engineering*, 37 (2016) 1027-1037.

[15] M. Khaled, F. Harambat, H. El Hage, and H. Peerhossaini, Spatial optimization of underhood cooling module – towards an innovative control approach, *Applied Energy*, 88 (2011) 3841-3849.