



HAL
open science

Serotonin in stem cell based-dental repair and bone formation: A review

Anne Baudry, Benoit Schneider, Jean-Marie Launay, Odile Kellermann

► To cite this version:

Anne Baudry, Benoit Schneider, Jean-Marie Launay, Odile Kellermann. Serotonin in stem cell based-dental repair and bone formation: A review. *Biochimie*, 2019, 161, pp.65-72. 10.1016/j.biochi.2018.07.030 . hal-02363112

HAL Id: hal-02363112

<https://hal.science/hal-02363112>

Submitted on 22 Oct 2021

HAL is a multi-disciplinary open access archive for the deposit and dissemination of scientific research documents, whether they are published or not. The documents may come from teaching and research institutions in France or abroad, or from public or private research centers.

L'archive ouverte pluridisciplinaire **HAL**, est destinée au dépôt et à la diffusion de documents scientifiques de niveau recherche, publiés ou non, émanant des établissements d'enseignement et de recherche français ou étrangers, des laboratoires publics ou privés.



Distributed under a Creative Commons Attribution - NonCommercial 4.0 International License

Serotonin in stem cell based-dental repair and bone formation: a review

Anne Baudry^{1,2*}, Benoit Schneider^{1,2}, Jean-Marie Launay^{3,4}, Odile Kellermann^{1,2}

¹Université Paris Descartes, Sorbonne Paris Cité, UFR des Sciences Fondamentales et Biomédicales, UMR 1124, France.

²INSERM, UMR 1124, France.

³Assistance Publique des Hôpitaux de Paris, Service de Biochimie, INSERM UMR942, Hôpital Lariboisière, France.

***Corresponding author:**

anne.baudry@parisdescartes.fr

ABSTRACT

Genetic and pharmacological studies provided evidence that serotonin (5-HT) is an important signaling molecule for the development and the maintenance of mineralized tissues. However, how 5-HT takes part to the homeostasis of teeth and bone remains elusive. In the dental field, a major breakthrough comes from the identification of 5-HT but also dopamine (DA) as "damage" signals necessary for stem cell-based tooth repair. Pulpal stem cells express the overall functions of 5-HT and DA neurons including a definite set of functional 5-HT/DA receptors that render cells responsive for circulating bioamines. Upon tooth injury, activated platelets release bulks of 5-HT/DA that mobilize pulpal stem cells for natural dental repair. The contribution of 5-HT to bone metabolism is more documented with description of both anabolic and resorptive effects. By controlling the tissue-non specific alkaline phosphatase (TNAP), 5-HT_{2B} receptors exert an anabolic function and a pivotal role in mineralization processes. Increasing our understanding of the role of 5-HT receptors in bone metabolism may pave the road for the development of therapeutic strategies towards skeletal-associated pathologies and ectopic calcification.

Keywords: Serotonin, Stem cells, Bone mineralization, Tooth repair

Contents

1. Introduction
2. Serotonin in tooth repair: a dialogue between odontogenic stem cells and platelets
 - 2.1. Isolation of clonal pulpal stem cell lines
 - 2.2. Odontogenic pulpal stem cells display a mixed serotonergic/dopaminergic phenotype
 - 2.3. Functional serotonergic 5-HT_{1D,2B,7} and dopaminergic D_{1,3} autoreceptors are expressed by odontogenic stem cells
 - 2.4. Serotonergic and dopaminergic receptors relay the action of platelets-derived 5-HT and DA to mobilize pulpal stem cells for tooth repair
3. Bone mineralization: a major role of 5-HT_{2B}R signaling
 - 3.1. The C1 mesoblastic cell line selectively expresses 5-HT_{2B}Rs during osteogenic differentiation
 - 3.2. 5-HT_{2B}Rs are coupled to NO and eicosanoid productions along C1 osteogenic program
 - 3.3. 5-HT_{2B}Rs govern bone mineralization through control of TNAP activity via eicosanoids and phosphatidylinositol-specific phospholipase C
4. Conclusions and future directions

1. Introduction

Serotonin (5-hydroxytryptamine ; 5-HT) is a tryptophan-derived bioamine synthesized by neurons of the raphe nuclei in the central nervous system and gut enterochromaffin cells in the periphery, this last site accounting for 95% of 5-HT produced in the human body. In the brain, 5-HT acts as a neurotransmitter and mediates a wide variety of behavioral and physiological processes such as sleep, memory, cognition, appetite or mood [1]. Peripheral 5-HT stored in platelet-dense granules is involved in the regulation of cardiovascular, gastrointestinal, smooth muscle and endocrine functions [1]. This monoamine influences such broad physiological processes thanks to the presence at the surface of recipient cells of a serotonin transporter (SERT) and/or serotonergic receptors (5-HTRs). To date, 15 serotonergic receptor subtypes were identified, divided in seven classes (5-HT₁₋₇R) [2]. They all belong to the G-protein coupled receptor (GPCR) superfamily except for the 5-HT₃R, a ligand gated ion channel [2].

At early stages of embryonic mammalian development, 5-HT of maternal origin [3] was shown to exert a trophic role [4-6], notably in craniofacial development [7,8]. Shuey et al. reported craniofacial malformations, including mandibular and maxillary hypoplasia, in mouse embryos exposed to antidepressants such as sertraline or fluoxetine (Prozac[®]) that target and block the SERT [9]. Similar morphological defects were observed when mouse embryos were treated with the 5-HT₂R inverse agonist ritanserin [7]. Supporting the role of 5-HT in skeleton development and tooth formation, 5-HT would drive the migration and differentiation of neural crest cells which are at the origin of oral facial mineralized tissues. Following migration from the rostral hindbrain (rhombomeres 1 and 2) and caudal midbrain, neural crest cells populate the first branchial arch to give rise to the ectomesenchyme required for the formation of (i) mandibular and maxillary bones and (ii) the central core dentin and root lining cementum in teeth [10,11] (Fig. 1). The ectomesenchyme functionally interacts

with the dental epithelium to promote formation of the tooth bud preceding cell differentiation into dentin-secreting odontoblasts and enamel-secreting ameloblasts. Interestingly, the presence of 5-HT_{2B}R at day 9 of mouse embryogenesis in the first branchial arch argues for an involvement of this receptor in the migration of neural crest cells and their commitment towards osteo-odontogenic lineages. Consistent with this, by using the alternative vertebrate model *Xenopus laevis*, Reisoli et al. showed that 5-HT_{2B}R contributes to morphogenesis of the first branchial arch and formation of the jaw joint [12], reinforcing the key role of the 5-HT_{2B}R in craniofacial development.

Expression of the SERT and diverse serotonergic receptors has been evidenced at the mRNA or protein levels in osteoblast primary cultures, osteoblastic cell lines or RANKL-induced RAW264.7 osteoclasts as well as in tooth tissues [13-20]. This suggests that bone-forming osteoblasts, bone-resorbing osteoclasts, ameloblasts and odontoblasts are directly influenced by circulating 5-HT. Accordingly, Gustafsson et al. showed that 5-HT stimulates proliferation of human osteoclasts and primary osteoblasts as well as murine preosteoblasts *in vitro* [21]. Two-months old rats treated by daily 5-HT administration for 3 months display higher bone mineral density, altered bone architecture and higher femoral stiffness [22]. Further, clinical studies have reported that the use of selective serotonin reuptake inhibitors (SSRIs) antidepressants such as fluoxetine, for a long time period, is associated with altered bone mineral density, osteoporosis or increased risks of bone fracture [23-25]. Four-weeks old wild-type mice treated with fluoxetine exhibit reduced bone mass accrual during growth [26]. SERT knockout mice also display reduced bone mass, altered skeletal architecture and decreased femur mechanical properties [26]. Yun et al. recently reported that activation of 5-HT₆R by the agonist ST1936 inhibits osteoblast differentiation *in vitro* and calvarial bone regeneration *in vivo* [20]. The 5-HT_{1B}R was also involved in the negative control of bone mass. 5-HT_{1B}R knockout mice display increased osteoblast proliferation and bone formation

resulting in high bone mass [27]. In contrast, pharmacological blockade of the 5-HT_{2A}R with MDL11939 leads to loss of bone mass in mice, due to an impairment of bone formation [28]. The deletion of 5-HT_{2B}R provokes an age-dependent reduction of bone mineral density, but only in females [16]. The osteopenia observed in 5-HT_{2B}R^{-/-} mice can be accounted for by a defect of osteoprogenitor recruitment and a decrease of osteoblast proliferation [16]. The bony phenotype of 5-HT_{2B}R^{-/-} mice is reminiscent to that of SERT^{-/-} mice [26], but the damages on skeleton caused by the absence of 5-HT_{2B}R are less pronounced and occur later compared to SERT^{-/-} mice. Of note, 5-HT_{2A}R is up-regulated in 5-HT_{2B}R^{-/-} calvaria-derived osteoblasts [16]. 5-HT_{2A}R may, at least partly, compensate for the absence of the 5-HT_{2B}R. Besides, we monitored structural alterations of dental tissues in 5-HT_{2B}R knockout mice [17,29]. Electron microscopy analysis revealed that teeth of both male and female 5-HT_{2B}R^{-/-} mice exhibit numerous enamel porosities and reduced thickness of the crystallite, which are worsened in female (Fig. 2).

In this review, we will highlight how the use of stem cell lines, which combine the capacities to maintain a stable immature phenotype and to recapitulate *in vitro* upon induction the spatio-temporal features of odontogenic or osteogenic differentiation, has contributed to our understanding of the role of 5-HT and serotonergic receptors in bone homeostasis and tooth repair.

2. Serotonin in tooth repair: a dialogue between odontogenic stem cells and platelets

To rational the development of stem cell-based tooth regenerative strategies, a prerequisite is to define the intrinsic properties of odontogenic stem cells and to identify the physiological signals leading to the recruitment of those pulpal progenitors for reparative dentin formation upon tooth injury. Since the 2000's, odontogenic stem cells were isolated from the pulp of human permanent third molars that referred to as dental pulp stem cells (DPSCs) [30] and

from exfoliated deciduous teeth called SHED cells [31]. Upon induction, DPSCs and SHEDs can differentiate *in vitro* into odontoblasts, osteoblasts, adipocytes and neuron-like cells. *In vivo*, they give rise to dentin-like structures when transplanted subcutaneously with hydroxyapatite/tricalcium phosphate (HA/TCP) powder into the dorsal surface of immunocompromised mice [30,32]. Other stem cells have been derived from the periodontal ligament of permanent tooth (PDLCS) [33]. PDLCS showed the capacity to differentiate into cementoblasts, adipocytes and osteoblasts *in vitro* and to form cementum and periodontal ligament-like structures after transplantation *in vivo* [33]. SCAP cells, derived from the root apical papilla of human tooth, are able to differentiate into osteoblasts and adipocytes *in vitro* [34]. Upon transplantation with HA/TCP in immunocompromised mice, SCAP cells formed dentin [34]. These dental stem cells are heterogeneous cell populations and the lack of specific markers render their isolation difficult. This limits their use for defining the proper identity of odontogenic stem cells. Establishing homogenous dental stem cell lines will help to challenge this issue.

2.1. Isolation of clonal pulpal stem cell lines

In 2005, our laboratory isolated clonal cell lines from the first molar tooth germs of day 18 mouse embryos [35], which display stem cell properties [36]. They maintain a stable phenotype under long-term standard culture conditions, even in 10% fetal calf serum and exhibit the hallmarks of the odontogenic lineage. They express the transcription factors Lhx6 and Lhx7, two LIM-domain homeobox genes that specify the first branchial arch where the tooth bud is formed, as well as low levels of the odontoblast markers, type 1 collagen, dentin matrix protein (DMP1) and dentin sialoprotein (DSP). After implantation in a mouse incisor or rat molar, two pulpal stem cell lines (A4 and H8) induce spatio-temporally controlled-osteodentin formation and promote efficient tooth repair [36,37]. A4 and H8 cells are

however precursors at different stages of commitment along the odontogenic lineage. The A4 cell line behaves as a multipotent mesoblastic stem cell, which undergo *in vitro* odonto/osteogenic, chondrogenic or adipogenic differentiation, depending on the inducers. H8 cells are monopotent progenitors whose potential is restricted towards the odontogenic fate [36].

2.2. Odontogenic pulpal stem cells display a mixed serotonergic/dopaminergic phenotype

As human DPSCs that secrete diverse neurotrophic factors [38,39], A4 and H8 pulpal cell lines display high contents of Brain-Derived Neurotrophic Factor (BDNF) and Nerve Growth Factor (NGF) as well as insulin-like growth factor-1 (IGF1), which are all stored in large dense-core vesicles [40]. Of note, the dental pulp is a tissue highly innervated. BDNF, NGF and IGF-1 are all well known to promote axon guidance and elongation as well as neuronal survival [41,42]. These neurotrophins released by pulpal stem cells might contribute to tooth innervation along root formation and tooth repair.

Surprisingly, we discovered that odontogenic stem cells have a dual serotonergic and dopaminergic identity [40]. Both A4 and H8 pulpal cell lines are able to synthesize 5-HT and dopamine (DA) and express all functional enzymes ensuring complete 5-HT/DA metabolisms. This includes the tryptophane hydroxylase and the tyrosine hydroxylase, the rate-limiting enzymes in 5-HT and DA synthesis, respectively, as well as monoamine oxidases involved in the catabolism of these bioamines. Further, both cell lines express functional SERT and vesicular transporters (VMATs), which confer the ability to co-store 5-HT and DA. Until now, such a mixed 5-HT/DA phenotype is an intriguing finding that has never been described. Finally, the properties of pulpal stem cells to produce neurotrophins as well as overall bioaminergic functions led foundation for their use for therapeutic purposes, including the treatment of neural tissue injury [43] or neurodegenerative diseases [44,45].

2.3. Functional serotonergic 5-HT_{1D,2B,7} and dopaminergic D_{1,3} autoreceptors are expressed by odontogenic stem cells

A striking feature of A4 and H8 pulpal stem cells is the expression at the plasma membrane of the same specific subset of serotonergic and dopaminergic receptors. This includes the 5-HT_{2B}, 5HT_{1D} and 5-HT₇ receptor subtypes and dopaminergic D₁ and D₃ receptor subtypes, which are all G-protein coupled receptors (GPCRs). Of note, the three 5-HT receptors selectively expressed by odontogenic stem cells have been shown to mediate trophic effects of 5-HT during early embryogenesis [4,46]. 5-HT_{1D}R and 5-HT₇R are detected in preimplantation mouse embryos [47]. The 5-HT_{2B}R is expressed at embryonic day 9 by neural crest-derived tooth buds [46]. All these bioaminergic receptors are functional in pulpal cell lines since they are coupled to downstream signaling effectors (Fig. 3). For instance, 5-HT₇R and D₁R positively control adenylate cyclase activity while 5-HT_{1D}R and D₃R are negatively coupled to cAMP production. The pleiotropic 5-HT_{2B}R couplings to phospholipase C-dependent inositol 1, 4, 5-triphosphate (IP3), NO and phospholipase A2 (PLA2)-mediated eicosanoid productions put forward some preferential role of this receptor in dental repair since all these regulatory molecules are known to contribute to mechanical stress, inflammation and vasodilatation mechanisms in other tissues [48-50]. Such specific expression of 5-HT/DA receptors at the cell surface of pulpal stem cells suggests these receptors take part to the fine-tuning of odontogenic stem cell functions in an autocrine and/or paracrine manner. An overexpression of 5-HT_{1D,2B,7}R and D_{1,3}R has been reported in various types of cancer stem cells [51,52]. In a physiological context, whether 5-HT and DA receptor-dependent signalings act together to maintain pulpal stem cell quiescence and/or influence the balance between self-renewal and differentiation remains to be delineated.

Stem cell behavior is regulated by a local microenvironment referred as to "the stem cell

niche". This anatomic space includes (i) stem cells and (ii) stromal-supporting cells that interact with the stem cells via secreted factors and/or extracellular matrix (ECM), which allows the diffusion of mechanical and chemical signals [53-56]. The distribution of tissue stem cells is not random, and, several distinct stem cell niches (apex, isthmus between the mesial and the central pulp chambers, mesial part below the pulp exposure site,...) potentially exist within the dental pulp [37,40,57]. In these specialized niches, whether the maintenance of the odontogenic stem cell state and/or differentiation of odontogenic progenitors would relate to 5-HT/DA receptors-dependent control of developmental signals such as BMP, FGF, Notch, Hedgehog and Wnt remains to be explored. Finally, the role of 5-HT and DA signaling in the recruitment of pulpal stem cells, their self-renewal, migration and differentiation for tooth repair deserves further *in vitro* and *in vivo* investigations.

2.4. Serotonergic and dopaminergic receptors relay the action of platelets-derived 5-HT and DA to mobilize pulpal stem cells for tooth repair

The presence of a specific repertoire of serotonergic and dopaminergic receptors at the plasma membrane of odontogenic stem cells renders these cells competent to respond to both 5-HT and DA, and in particular to those circulating bioamines. In the periphery, 5-HT and DA are mainly stored in blood platelets. In platelets, 5-HT and DA contents are about 25,000 and 100-300 times higher than the concentration of free circulating 5-HT and DA in plasma, respectively [58]. Of note, the dental pulp is highly vascularized [59]. This raised the question of whether 5-HT and DA released by injury-activated platelets would represent "warning" signals necessary for mobilizing pulpal stem cells for tooth repair. Such issue was tackled using Fawn-hooded and reserpine-treated rats, two rat models whose blood platelets are deficient in bioamine storage. In wild-type rats, after pulp exposure of the mesial part of the first maxillary molar, the formation of a reparative dentin was observed at the lesion site after

30 days and the thickness of the dental bridge increased until 3 months. By contrast, with Fawn-hooded and reserpine-treated rats, natural dentin formation was not detected [40]. Thus, natural dental repair depends on platelet-stored bioamines that recruit genuine stem cells expressing 5-HT/DA receptors (Fig. 4). The pharmacological inhibition of each of the 5-HT_{2B,7} and D_{1,3} receptors upon introduction of selective antagonists within the pulp also altered the reparative process [40]. Upon tooth injury, these receptors are involved in pulpal stem cell-based dental repair by transducing 5-HT and DA co-released by activated platelets. The identification of 5-HT/DA as crucial “damage” signals for stem cell-mediated tooth repair paves the road for novel therapeutic approaches in the dental field.

3. Bone mineralization: a major role of 5-HT_{2BR} signaling

Bone development, growth, remodeling and repair are highly regulated processes ensuring skeleton homeostasis. Despite considerable efforts to dissect the molecular pathways sustaining osteogenesis, the regulatory mechanisms governing collagen matrix mineralization still remain enigmatic. It is now clear that the serotonergic system contributes to bone metabolism [60], but our understanding of the role of serotonergic receptors in bone mineralization is still scarce. Notably, what are the signaling pathways and targets governed by 5-HT receptors to orchestrate bone homeostasis? Tackling this issue *in vivo* or with primary cultures is rendered difficult by the heterogeneity of cell types and the multiplicity of signals at play. Clonal osteogenic cell lines with homogenous phenotypic properties permit to overcome these limitations.

3.1. The C1 mesoblastic cell line selectively expresses 5-HT_{2BRs} during osteogenic differentiation

The C1 tripotential mesoblastic cell line maintains a stable undifferentiated phenotype even in 10% serum. Upon addition of appropriate inducers, C1 cells engage at high frequency

(>90%), in a mutually exclusive and synchronous manner, into the osteogenic, chondrogenic or adipogenic programs [61]. For osteogenic differentiation, C1 cells must first form three-dimensional nodules mimicking the *in vivo* mesodermal stem cell condensation required for skeleton development and bone repair. After addition of β -glycerophosphate (β GP) and ascorbate, C1 cells reach terminal differentiation within 12 days (Fig. 5). Till day 4 of the osteogenic program, close to 100% C1 aggregates direct the deposition of a profuse type 1 collagen extracellular matrix, consistent with what observed during intramembranous bone formation *in vivo*. At day 7, hydroxyapatite crystals start to be formed and deposited on collagen fibrils surrounding C1 osteoblasts leading to progressive mineralization of the extracellular matrix. At day 12, C1 cells convert into mature osteocyte-like cells embedded in a calcified matrix and cease to divide [62].

Pharmacological studies led to show that a functional 5-HT_{2B}R is implemented at day 5 of the osteogenic program, just before matrix mineralization [63,64]. Of note, the mRNAs encoding 5-HT_{2B}R are already present at the stem cell state in condensing C1 mesoblastic cells and their level do not vary during the 12 day differentiation time course. The selective expression of 5-HT_{2B}R is an intrinsic event of the C1 osteogenic program and requires post-transcriptional regulation mechanisms that have yet-to-be identified. 5-HT_{2B}R signaling optimizes matrix mineralization since blockade of 5-HT_{2B}R by ritanserin from day 5 reduces by 40% Ca²⁺ incorporation within the bone matrix [63], in agreement with the osteopenic phenotype of 5-HT_{2B}R^{-/-} mice [16].

3.2. 5-HT_{2B}Rs are coupled to NO and eicosanoid productions along C1 osteogenic program

From day 5 to terminal differentiation, 5-HT_{2B}Rs exhibit an agonist dependent- and independent-coupling to the nitric oxide (NO) signaling pathway (Fig. 5). The critical role of NO radical in the dynamic process of bone remodeling has been described for more than a

decade [65]. In bone, the endothelial isoform of nitric oxide synthase (eNOS) is constitutively expressed while the inducible NOS (iNOS) is only activated in inflammatory conditions. eNOS knockout mice display osteoporosis, which sustains an anabolic role of NO in bone metabolism [66,67]. Resorptive effects of NO on the skeleton have also been reported [68]. The importance of a tight regulation of NO production for bone homeostasis is further supported by bone defects in patients suffering of inflammatory diseases like rheumatoid arthritis, associated with strong NO production [68].

In addition to its coupling to NOS, the 5-HT_{2B}Rs are coupled to the phospholipase A2 (PLA2)/acid arachidonic (AA) signaling pathway. 5-HT_{2B}R/PLA2 coupling contributes to osteogenic differentiation by controlling the cyclooxygenase (COX) and lipoxygenase (LOX) pathways in a stepwise manner. During the initial phase of mineralization process, *i.e.* from day 5 to day 10, 5-HT_{2B}Rs control a COX-dependent prostaglandin PGE2 synthesis (Fig. 5). At day 10, when osteoblasts are converted into osteocytes, COX activity switches off. 5-HT_{2B}R/PLA2-derived AA becomes substrates for LOX enzymes and osteocytes produce the leukotriene LTB4. As for NO, both PGE2 and LTB4 eicosanoids are known to be involved in the regulation of bone metabolism by exercising either bone-forming and/or bone-resorbing actions [69]. Of note, COX knockout mice display reduced bone formation [70]. NO/PGE2/LTB4 can either act as intra- and/or inter-cellular second messengers. This raises the question of the nature of the osteoblast specific-functions governed by these effectors in bone homeostasis.

3.3. 5-HT_{2B}Rs govern bone mineralization through control of TNAP activity via eicosanoids and phosphatidylinositol-specific phospholipase C

Although not an osteoblast specific enzyme, the tissue-non specific alkaline phosphatase (TNAP) is a key actor in bone mineralization that governs the inorganic phosphate

(Pi)/pyrophosphate (PPi) ions ratio. The essential role of this glycosylphosphatidylinositol (GPI)-anchored enzyme in mineral crystal formation has been evidenced in human patients with TNAP loss-of-function mutation [71] or TNAP knockout mice [72], which are defective for bone and teeth mineralization. Furthermore, transgenic mice, which ectopically express TNAP specifically in the dermis enriched in type 1 collagen, develop pathological skin calcification [73]. The dynamics of the C1 cell differentiation allowed to show that TNAP activity is fully controlled by 5-HT_{2B}R-dependent PLA2 signaling pathway (Fig. 5). As for 5-HT_{2B}R transcripts, TNAP mRNAs are dormant at the stem cell stage and their levels remain constant along the osteogenic program. To date, the signals that turn on 5-HT_{2B}R and TNAP translation at day 5 are still missing. While expressed, TNAP enzyme remains inactive until day 7. Its activation depends on post-translational modifications elicited by 5-HT_{2B}R signaling. 5-HT_{2B}R coupling to PLA2 stimulates phosphatidylinositol-specific phospholipase C (PIPLC) activity, which cleaves the GPI anchor of TNAP and thereby unlocks TNAP activity. Such a functional link between 5-HT_{2B}R, PIPLC and TNAP has also been evidenced in primary calvarial cells [64]. 5-HT_{2B}R^{-/-} osteoblasts also revealed a hitherto-unknown interaction between 5-HT_{2B}Rs and the nuclear PPAR β/δ receptors via prostacyclins [74]. While the functional impact of 5-HT in the skeleton is still debated, the 5-HT_{2B}R plays a key role in mineralization processes.

4. Conclusions and future directions

This review reports some recent aspects of the implication of 5-HT and serotonergic receptors in mineralized tissues homeostasis. As concern dental tissues, tooth decay is one of the widest spread infections around the world (almost 100%). Root canal sealers used for endodontic treatments aim to eradicate bacterial infection and protect tooth against re-contaminations. These filling materials are not designed to preserve and/or mobilize resident pulpal stem cells

for tooth repair. The identification of a dialogue mediated by 5-HT and DA between blood platelets and odontogenic stem cells provides a rationale for the development of novel therapeutic strategies targeting pulpal stem cells and therefore enhancing natural tooth repair. Regarding the skeleton, the integrity of this dynamic tissue is ensured by a constant remodeling through the coordinated action of bone-forming osteoblasts and bone-resorbing osteoclasts. Although, it is becoming clear that the 5-HT system contributes to bone metabolism, the action of 5-HT on skeleton homeostasis is still controversial. A genetic approach developed by Yadav et al. revealed a low bone mass phenotype in mice depleted for TPH2, the brain TPH isoform. These data suggest that brain-derived 5-HT contributes to skeleton homeostasis through the hypothalamus by suppression of sympathetic tone [75]. Yadav et al. have also shown that gut-specific TPH1 conditional knockout mice display increased bone formation and high bone mass suggesting an inhibiting effect of circulating 5-HT on bone formation through 5-HT_{1B}Rs [27]. However, other studies reported that adult TPH1^{-/-} mice had no change in bone mass density [76,77]. Further analyses indicate altered bone resorption in TPH1^{-/-} mice due to osteoclastic differentiation defect [77]. Additional works are thus required to better characterize the role of 5-HT in bone metabolism taking into account the relative affinity of serotonergic receptors for 5-HT and the diversity of their couplings. Among the 5-HT receptors, the 5-HT_{2B}R exerts a pivotal role in mineralization processes by controlling TNAP activity through its PLA2/eicosanoids/PIPLC coupling. Several lines of evidence support the notion that physiological and pathological mineralizations mobilize similar pathways [78]. Currently, molecular mechanisms involved in ectopic mineralization of soft tissues are unsolved. Of note, deregulations of PGE2 and LTB4 levels have been associated with pathological situations such as bone fracture, rheumatoid arthritis, osteoarthritis, osteoporosis [69]. Whether alteration of 5-HT_{2B}R signaling would drive ectopic pathological calcifications deserves further investigations.

Conflicts of interest

The authors declare no conflict of interest.

Acknowledgments

This work was supported by Inserm.

References

- [1] C. Jonnakuty and C. Gragnoli, What do we know about serotonin?, *J Cell Physiol* 217 (2008) 301-306.
- [2] J. Hannon and D. Hoyer, Molecular biology of 5-HT receptors, *Behav Brain Res* 195 (2008) 198-213.
- [3] F. Cote, C. Fligny, E. Bayard, J.M. Launay, M.D. Gershon, J. Mallet and G. Vodjdani, Maternal serotonin is crucial for murine embryonic development, *Proc Natl Acad Sci U S A* 104 (2007) 329-334.
- [4] P. Gaspar, O. Cases and L. Maroteaux, The developmental role of serotonin: news from mouse molecular genetics, *Nat Rev Neurosci* 4 (2003) 1002-1012.
- [5] J.R. Moiseiwitsch, The role of serotonin and neurotransmitters during craniofacial development, *Crit Rev Oral Biol Med* 11 (2000) 230-239.
- [6] J.M. Lauder, H. Tamir and T.W. Sadler, Serotonin and morphogenesis. I. Sites of serotonin uptake and -binding protein immunoreactivity in the midgestation mouse embryo, *Development* 102 (1988) 709-720.
- [7] D.S. Choi, S.J. Ward, N. Messaddeq, J.M. Launay and L. Maroteaux, 5-HT_{2B} receptor-mediated serotonin morphogenetic functions in mouse cranial neural crest and myocardial cells, *Development* 124 (1997) 1745-1755.

- [8] D.L. Shuey, T.W. Sadler, H. Tamir and J.M. Lauder, Serotonin and morphogenesis. Transient expression of serotonin uptake and binding protein during craniofacial morphogenesis in the mouse, *Anat Embryol (Berl)* 187 (1993) 75-85.
- [9] D.L. Shuey, T.W. Sadler and J.M. Lauder, Serotonin as a regulator of craniofacial morphogenesis: site specific malformations following exposure to serotonin uptake inhibitors, *Teratology* 46 (1992) 367-378.
- [10] I. Thesleff, Epithelial-mesenchymal signalling regulating tooth morphogenesis, *J Cell Sci* 116 (2003) 1647-1648.
- [11] F. Santagati and F.M. Rijli, Cranial neural crest and the building of the vertebrate head, *Nat Rev Neurosci* 4 (2003) 806-818.
- [12] E. Reisoli, S. De Lucchini, I. Nardi and M. Ori, Serotonin 2B receptor signaling is required for craniofacial morphogenesis and jaw joint formation in *Xenopus*, *Development* 137 (2010) 2927-2937.
- [13] M.M. Bliziotis, A.J. Eshleman, X.W. Zhang and K.M. Wiren, Neurotransmitter action in osteoblasts: expression of a functional system for serotonin receptor activation and reuptake, *Bone* 29 (2001) 477-486.
- [14] I. Westbroek, A. van der Plas, K.E. de Rooij, J. Klein-Nulend and P.J. Nijweide, Expression of serotonin receptors in bone, *J Biol Chem* 276 (2001) 28961-28968.
- [15] R. Battaglino, J. Fu, U. Spate, U. Ersoy, M. Joe, L. Sedaghat and P. Stashenko, Serotonin regulates osteoclast differentiation through its transporter, *J Bone Miner Res* 19 (2004) 1420-1431.
- [16] C. Collet, C. Schiltz, V. Geoffroy, L. Maroteaux, J.M. Launay and M.C. de Vernejoul, The serotonin 5-HT_{2B} receptor controls bone mass via osteoblast recruitment and proliferation, *FASEB J* 22 (2008) 418-427.

- [17] Y. Harichane, S. Dimitrova-Nakov, A. Marchadier, C. Collet, A. Baudry, C. Vidal, A. Kamoun-Goldrat, O. Kellermann and M. Goldberg, Enamel alterations in serotonin 2B receptor knockout mice, *Eur J. Oral Sci* 119 (2011) 177-184.
- [18] E.A. Riksen, A.K. Stunes, A. Kalvik, B.I. Gustafsson, M.L. Snead, U. Syversen, S.P. Lyngstadaas and J.E. Reseland, Serotonin and fluoxetine receptors are expressed in enamel organs and LS8 cells and modulate gene expression in LS8 cells, *Eur J Oral Sci* 118 (2010) 566-573.
- [19] S.J. Warden, A.G. Robling, E.M. Haney, C.H. Turner and M.M. Bliziotes, The emerging role of serotonin (5-hydroxytryptamine) in the skeleton and its mediation of the skeletal effects of low-density lipoprotein receptor-related protein 5 (LRP5), *Bone* 46 (2010) 4-12.
- [20] H.M. Yun, K.R. Park, J.T. Hong and E.C. Kim, Peripheral serotonin-mediated system suppresses bone development and regeneration via serotonin 6 G-protein-coupled receptor, *Sci Rep* 6 (2016) 30985.
- [21] B.I. Gustafsson, L. Thommesen, A.K. Stunes, K. Tommeras, I. Westbroek, H.L. Waldum, K. Slordahl, M.V. Tamburstuen, J.E. Reseland and U. Syversen, Serotonin and fluoxetine modulate bone cell function in vitro, *J Cell Biochem* 98 (2006) 139-151.
- [22] B.I. Gustafsson, I. Westbroek, J.H. Waarsing, H. Waldum, E. Solligard, A. Brunsvik, S. Dimmen, J.P. van Leeuwen, H. Weinans and U. Syversen, Long-term serotonin administration leads to higher bone mineral density, affects bone architecture, and leads to higher femoral bone stiffness in rats, *J Cell Biochem* 97 (2006) 1283-1291.
- [23] E.M. Haney and S.J. Warden, Skeletal effects of serotonin (5-hydroxytryptamine) transporter inhibition: evidence from clinical studies, *J Musculoskelet Neuronal Interact* 8 (2008) 133-145.

- [24] R. Rizzoli, C. Cooper, J.Y. Reginster, B. Abrahamsen, J.D. Adachi, M.L. Brandi, O. Bruyere, J. Compston, P. Ducy, S. Ferrari, N.C. Harvey, J.A. Kanis, G. Karsenty, A. Laslop, V. Rabenda and P. Vestergaard, Antidepressant medications and osteoporosis, *Bone* 51 (2012) 606-613.
- [25] E.M. Tsapakis, Z. Gamie, G.T. Tran, S. Adshead, A. Lampard, A. Mantalaris and E. Tsiridis, The adverse skeletal effects of selective serotonin reuptake inhibitors, *Eur Psychiatry* 27 (2012) 156-169.
- [26] S.J. Warden, A.G. Robling, M.S. Sanders, M.M. Bliziotes and C.H. Turner, Inhibition of the serotonin (5-hydroxytryptamine) transporter reduces bone accrual during growth, *Endocrinology* 146 (2005) 685-693.
- [27] V.K. Yadav, J.H. Ryu, N. Suda, K.F. Tanaka, J.A. Gingrich, G. Schutz, F.H. Glorieux, C.Y. Chiang, J.D. Zajac, K.L. Insogna, J.J. Mann, R. Hen, P. Ducy and G. Karsenty, Lrp5 controls bone formation by inhibiting serotonin synthesis in the duodenum, *Cell* 135 (2008) 825-837.
- [28] K. Tanaka, T. Hirai, Y. Ishibashi, N. Izumo and A. Togari, Modulation of osteoblast differentiation and bone mass by 5-HT_{2A} receptor signaling in mice, *Eur J Pharmacol* 762 (2015) 150-157.
- [29] S. Dimitrova-Nakov, A. Baudry, Y. Harichane, C. Collet, A. Marchadier, O. Kellermann and M. Goldberg, Deletion of serotonin 2B receptor provokes structural alterations of mouse dental tissues, *Calcif Tissue Int* 94 (2014) 293-300.
- [30] S. Gronthos, M. Mankani, J. Brahim, P.G. Robey and S. Shi, Postnatal human dental pulp stem cells (DPSCs) in vitro and in vivo, *Proc Natl Acad Sci U S A* 97 (2000) 13625-13630.

- [31] M. Miura, S. Gronthos, M. Zhao, B. Lu, L.W. Fisher, P.G. Robey and S. Shi, SHED: stem cells from human exfoliated deciduous teeth, *Proc Natl Acad Sci U S A* 100 (2003) 5807-5812.
- [32] G.T. Huang, S. Gronthos and S. Shi, Mesenchymal stem cells derived from dental tissues vs. those from other sources: their biology and role in regenerative medicine, *J Dent Res* 88 (2009) 792-806.
- [33] B.M. Seo, M. Miura, S. Gronthos, P.M. Bartold, S. Batouli, J. Brahim, M. Young, P.G. Robey, C.Y. Wang and S. Shi, Investigation of multipotent postnatal stem cells from human periodontal ligament, *Lancet* 364 (2004) 149-155.
- [34] W. Sonoyama, Y. Liu, D. Fang, T. Yamaza, B.M. Seo, C. Zhang, H. Liu, S. Gronthos, C.Y. Wang, S. Wang and S. Shi, Mesenchymal stem cell-mediated functional tooth regeneration in swine, *PLoS One* 1 (2006) e79.
- [35] F. Priam, V. Ronco, M. Locker, K. Bourd, M. Bonnefoix, T. Duchene, J. Bitard, T. Wurtz, O. Kellermann, M. Goldberg and A. Poliard, New cellular models for tracking the odontoblast phenotype, *Arch Oral Biol* 50 (2005) 271-277.
- [36] S. Lacerda-Pinheiro, S. Dimitrova-Nakov, Y. Harichane, M. Souyri, L. Petit-Cocault, L. Legres, A. Marchadier, A. Baudry, S. Ribes, M. Goldberg, O. Kellermann and A. Poliard, Concomitant multipotent and unipotent dental pulp progenitors and their respective contribution to mineralised tissue formation, *Eur Cell Mater* 23 (2012) 371-386.
- [37] Y. Harichane, A. Hirata, S. Dimitrova-Nakov, I. Granja, A. Goldberg, O. Kellermann and A. Poliard, Pulpal progenitors and dentin repair, *Adv Dent Res* 23 (2011a) 307-312.
- [38] W. Martens, K. Sanen, M. Georgiou, T. Struys, A. Bronckaers, M. Ameloot, J. Phillips and I. Lambrichts, Human dental pulp stem cells can differentiate into

- Schwann cells and promote and guide neurite outgrowth in an aligned tissue-engineered collagen construct in vitro, *FASEB J* 28 (2014) 1634-1643.
- [39] J. Ratajczak, A. Bronckaers, Y. Dillen, P. Gervois, T. Vangansewinkel, R.B. Driesen, E. Wolfs, I. Lambrichts and P. Hilkens, The Neurovascular Properties of Dental Stem Cells and Their Importance in Dental Tissue Engineering, *Stem Cells Int* 2016 (2016) 9762871.
- [40] A. Baudry, A. Alleaume-Butaux, S. Dimitrova-Nakov, M. Goldberg, B. Schneider, J.M. Launay and O. Kellermann, Essential Roles of Dopamine and Serotonin in Tooth Repair: Functional Interplay Between Odontogenic Stem Cells and Platelets, *Stem Cells* 33 (2015) 2586-2595.
- [41] M.G. Lykissas, A.K. Batistatou, K.A. Charalabopoulos and A.E. Beris, The role of neurotrophins in axonal growth, guidance, and regeneration, *Curr Neurovasc Res* 4 (2007) 143-151.
- [42] L. Decourtye, E. Mire, M. Clemessy, V. Heurtier, T. Ledent, I.C. Robinson, P. Mollard, J. Epelbaum, M.J. Meaney, S. Garel, Y. Le Bouc and L. Kappeler, IGF-1 Induces GHRH Neuronal Axon Elongation during Early Postnatal Life in Mice, *PLoS One* 12 (2017) e0170083.
- [43] K. Sakai, A. Yamamoto, K. Matsubara, S. Nakamura, M. Naruse, M. Yamagata, K. Sakamoto, R. Tauchi, N. Wakao, S. Imagama, H. Hibi, K. Kadomatsu, N. Ishiguro and M. Ueda, Human dental pulp-derived stem cells promote locomotor recovery after complete transection of the rat spinal cord by multiple neuro-regenerative mechanisms, *J Clin Invest* 122 (2012) 80-90.
- [44] A.A. Volponi, Y. Pang and P.T. Sharpe, Stem cell-based biological tooth repair and regeneration, *Trends Cell Biol* 20 (2010) 715-722.

- [45] J. Wang, X. Wang, Z. Sun, X. Wang, H. Yang, S. Shi and S. Wang, Stem cells from human-exfoliated deciduous teeth can differentiate into dopaminergic neuron-like cells, *Stem Cells Dev* 19 (2010) 1375-1383.
- [46] J.M. Lauder, M.B. Wilkie, C. Wu and S. Singh, Expression of 5-HT(2A), 5-HT(2B) and 5-HT(2C) receptors in the mouse embryo, *Int J Dev Neurosci* 18 (2000) 653-662.
- [47] J. Vesela, P. Rehak, J. Mihalik, S. Czikkova, J. Pokorny and J. Koppel, Expression of serotonin receptors in mouse oocytes and preimplantation embryos, *Physiol Res* 52 (2003) 223-228.
- [48] T. Aoki and S. Narumiya, Prostaglandins and chronic inflammation, *Trends Pharmacol Sci* 33 (2012) 304-311.
- [49] C. Li and Q. Xu, Mechanical stress-initiated signal transduction in vascular smooth muscle cells in vitro and in vivo, *Cell Signal* 19 (2007) 881-891.
- [50] K. Nizar, H. Uhlirova, P. Tian, P.A. Saisan, Q. Cheng, L. Reznichenko, K.L. Weldy, T.C. Steed, V.B. Sridhar, C.L. Macdonald, J. Cui, S.L. Gratiy, S. Sakadzic, D.A. Boas, T.I. Beka, G.T. Einevoll, J. Chen, E. Masliah, A.M. Dale, G.A. Silva and A. Devor, In vivo stimulus-induced vasodilation occurs without IP3 receptor activation and may precede astrocytic calcium increase, *J Neurosci* 33 (2013) 8411-8422.
- [51] V.P. Pai, A.M. Marshall, L.L. Hernandez, A.R. Buckley and N.D. Horseman, Altered serotonin physiology in human breast cancers favors paradoxical growth and cell survival, *Breast Cancer Res* 11 (2009) R81.
- [52] E. Sachlos, R.M. Risueno, S. Laronde, Z. Shapovalova, J.H. Lee, J. Russell, M. Malig, J.D. McNicol, A. Fiebig-Comyn, M. Graham, M. Levadoux-Martin, J.B. Lee, A.O. Giacomelli, J.A. Hassell, D. Fischer-Russell, M.R. Trus, R. Foley, B. Leber, A. Xenocostas, E.D. Brown, T.J. Collins and M. Bhatia, Identification of drugs including

- a dopamine receptor antagonist that selectively target cancer stem cells, *Cell* 149 (2012) 1284-1297.
- [53] D.L. Jones and A.J. Wagers, No place like home: anatomy and function of the stem cell niche, *Nat Rev Mol Cell Biol* 9 (2008) 11-21.
- [54] T.A. Mitsiadis, A. Feki, G. Papaccio and J. Caton, Dental pulp stem cells, niches, and notch signaling in tooth injury, *Adv Dent Res* 23 (2011) 275-279.
- [55] P. Pagella, E. Neto, M. Lamghari and T.A. Mitsiadis, Investigation of orofacial stem cell niches and their innervation through microfluidic devices, *Eur Cell Mater* 29 (2015) 213-223.
- [56] M. Oh and J.E. Nor, The Perivascular Niche and Self-Renewal of Stem Cells, *Front Physiol* 6 (2015) 367.
- [57] T.A. Mitsiadis, J. Caton, P. Pagella, G. Orsini and L. Jimenez-Rojo, Monitoring Notch Signaling-Associated Activation of Stem Cell Niches within Injured Dental Pulp, *Front Physiol* 8 (2017) 372.
- [58] M. Da Prada and G.B. Picotti, Content and subcellular localization of catecholamines and 5-hydroxytryptamine in human and animal blood platelets: monoamine distribution between platelets and plasma, *Br J Pharmacol* 65 (1979) 653-662.
- [59] B. Matthews and D. Andrew, Microvascular architecture and exchange in teeth, *Microcirculation* 2 (1995) 305-313.
- [60] B. Lavoie, J.B. Lian and G.M. Mawe, Regulation of Bone Metabolism by Serotonin, *Adv Exp Med Biol* 1033 (2017) 35-46.
- [61] A. Poliard, A. Nifuji, D. Lamblin, E. Plee, C. Forest and O. Kellermann, Controlled conversion of an immortalized mesodermal progenitor cell towards osteogenic, chondrogenic, or adipogenic pathways, *J Cell Biol* 130 (1995) 1461-1472.

- [62] A. Poliard, M.C. Ronziere, A.M. Freyria, D. Lamblin, D. Herbage and O. Kellermann, Lineage-dependent collagen expression and assembly during osteogenic or chondrogenic differentiation of a mesoblastic cell line, *Exp Cell Res* 253 (1999) 385-395.
- [63] M. Locker, J. Bitard, C. Collet, A. Poliard, V. Mutel, J.M. Launay and O. Kellermann, Stepwise control of osteogenic differentiation by 5-HT(2B) receptor signaling: nitric oxide production and phospholipase A2 activation, *Cell Signal* 18 (2006) 628-639.
- [64] A. Baudry, J. Bitard, S. Mouillet-Richard, M. Locker, A. Poliard, J.M. Launay and O. Kellermann, Serotonergic 5-HT(2B) receptor controls tissue-nonspecific alkaline phosphatase activity in osteoblasts via eicosanoids and phosphatidylinositol-specific phospholipase C, *J Biol Chem* 285 (2010) 26066-26073.
- [65] J. Klein-Nulend, R.F. van Oers, A.D. Bakker and R.G. Bacabac, Nitric oxide signaling in mechanical adaptation of bone, *Osteoporos Int* 25 (2014) 1427-1437.
- [66] K.E. Armour, K.J. Armour, M.E. Gallagher, A. Godecke, M.H. Helfrich, D.M. Reid and S.H. Ralston, Defective bone formation and anabolic response to exogenous estrogen in mice with targeted disruption of endothelial nitric oxide synthase, *Endocrinology* 142 (2001) 760-766.
- [67] J. Aguirre, L. Buttery, M. O'Shaughnessy, F. Afzal, I. Fernandez de Marticorena, M. Hukkanen, P. Huang, I. MacIntyre and J. Polak, Endothelial nitric oxide synthase gene-deficient mice demonstrate marked retardation in postnatal bone formation, reduced bone volume, and defects in osteoblast maturation and activity, *Am J Pathol* 158 (2001) 247-257.
- [68] R.J. van't Hof and S.H. Ralston, Nitric oxide and bone, *Immunology* 103 (2001) 255-261.

- [69] H. Hikiji, T. Takato, T. Shimizu and S. Ishii, The roles of prostanoids, leukotrienes, and platelet-activating factor in bone metabolism and disease, *Prog Lipid Res* 47 (2008) 107-126.
- [70] X. Zhang, E.M. Schwarz, D.A. Young, J.E. Puzas, R.N. Rosier and R.J. O'Keefe, Cyclooxygenase-2 regulates mesenchymal cell differentiation into the osteoblast lineage and is critically involved in bone repair, *J Clin Invest* 109 (2002) 1405-1415.
- [71] M.P. Whyte, Hypophosphatasia and the role of alkaline phosphatase in skeletal mineralization, *Endocr Rev* 15 (1994) 439-461.
- [72] S. Narisawa, N. Frohlander and J.L. Millan, Inactivation of two mouse alkaline phosphatase genes and establishment of a model of infantile hypophosphatasia, *Dev Dyn* 208 (1997) 432-446.
- [73] M. Murshed, D. Harmey, J.L. Millan, M.D. McKee and G. Karsenty, Unique coexpression in osteoblasts of broadly expressed genes accounts for the spatial restriction of ECM mineralization to bone, *Genes Dev* 19 (2005) 1093-1104.
- [74] Y. Chabbi-Achengli, J.M. Launay, L. Maroteaux, M.C. de Vernejoul and C. Collet, Serotonin 2B receptor (5-HT_{2B} R) signals through prostacyclin and PPAR- δ in osteoblasts, *PLoS One* 8 (2013) e75783.
- [75] V.K. Yadav, F. Oury, N. Suda, Z.W. Liu, X.B. Gao, C. Confavreux, K.C. Klemenhagen, K.F. Tanaka, J.A. Gingrich, X.E. Guo, L.H. Tecott, J.J. Mann, R. Hen, T.L. Horvath and G. Karsenty, A serotonin-dependent mechanism explains the leptin regulation of bone mass, appetite, and energy expenditure, *Cell* 138 (2009) 976-989.
- [76] Y. Cui, P.J. Niziolek, B.T. MacDonald, C.R. Zylstra, N. Alenina, D.R. Robinson, Z. Zhong, S. Matthes, C.M. Jacobsen, R.A. Conlon, R. Brommage, Q. Liu, F. Mseeh, D.R. Powell, Q.M. Yang, B. Zambrowicz, H. Gerrits, J.A. Gossen, X. He, M. Bader,

- B.O. Williams, M.L. Warman and A.G. Robling, Lrp5 functions in bone to regulate bone mass, *Nat Med* 17 (2011) 684-691.
- [77] Y. Chabbi-Achengli, A.E. Coudert, J. Callebert, V. Geoffroy, F. Cote, C. Collet and M.C. de Vernejoul, Decreased osteoclastogenesis in serotonin-deficient mice, *Proc Natl Acad Sci U S A* 109 (2012) 2567-2572.
- [78] M. Murshed and M.D. McKee, Molecular determinants of extracellular matrix mineralization in bone and blood vessels, *Curr Opin Nephrol Hypertens* 19 (2010) 359-365.

Figure legends

Fig. 1. Schematic representation of the migration of neural crest cells from the rostral hindbrain and caudal midbrain to reach the first branchial arch at the origin of teeth and mandibular (mb) and maxillary (mx) bones.

Fig. 2. Enamel structural defects in molar of 5-HT_{2B}R knockout mice observed by micro-computed tomography and electron microscopy analysis.

Fig. 3. 5-HT and DA receptors present at the surface of odontogenic stem cells and their couplings.

Fig. 4. 5-HT and DA co-released by activated platelets upon tooth injury are "warning" signals that mobilize pulpal stem cells for tooth repair through 5-HT/DA receptors.

Fig. 5. Diagram summarizing the regulation of TNAP activity by 5-HT_{2B}R through its PLA2/eicosanoids/PIPLC coupling during osteogenic differentiation.

Rhombomeres
of hindbrain

midbrain

r1

r2

r3

r4

r5

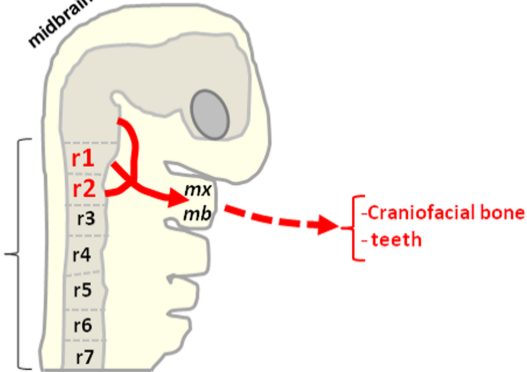
r6

r7

mx

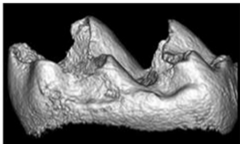
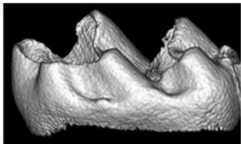
mb

-Craniofacial bone
-teeth

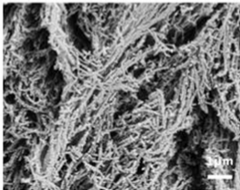
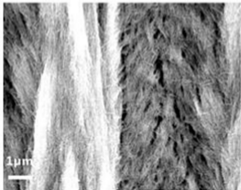


WT

5-HT_{2B}R^{-/-}



micro-computed
tomography
&
3D imaging



Electron
microscopy

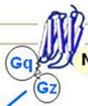
5-HT_{1D}R

D₃R

5-HT₇R

D₁R

5-HT_{2B}R



Adenylate cyclase

cAMP

PLC

IP3

PLA2

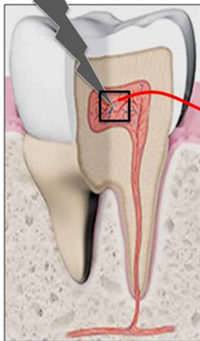
AA

NOS

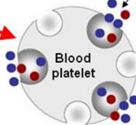
NO

*Dual «5-HT+DA» phenotype
of pulpal stem cells*

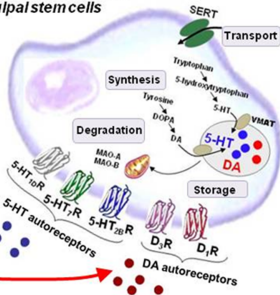
Tooth injury



Dense granules
(5-HT, DA)



Injury-activated
blood platelets
release
5-HT and DA



5-HT and DA recruit pulpal
stem cells for tooth repair
through the 5-HT and DA
autoreceptors

Ascorbate
+ β GP



D0

D5

Col I matrix
deposition

D7

D10

D12



Matrix mineralization

Conversion into
osteocytes

mRNA translation

Induction of
functional
5HT_{2B}R

5HT_{2B}R



G

PIPLC

Active
TNAP

Inactive
TNAP

PLA2

AA

COX

PGE2

Loss of
COX
coupling

5HT_{2B}R



G

PIPLC

Active
TNAP

PLA2

AA

LOX

LTB4

Dormant
5-HT_{2B}R and
TNAP mRNAs

0 3 7 10 12

