



General approaches for shear-correcting coordinate transformations in Bragg coherent diffraction imaging: Part 1

S. Maddali, P. Li, A. Pateras, D. Timbie, N. Deegan, A.L. Crook, H. Lee, I. Calvo-Almazan, D. Sheyfer, W. Cha, et al.

► To cite this version:

S. Maddali, P. Li, A. Pateras, D. Timbie, N. Deegan, et al.. General approaches for shear-correcting coordinate transformations in Bragg coherent diffraction imaging: Part 1. J.Appl.Cryst., 2020, 53, pp.393. hal-02362605

HAL Id: hal-02362605

<https://hal.science/hal-02362605>

Submitted on 9 Mar 2020

HAL is a multi-disciplinary open access archive for the deposit and dissemination of scientific research documents, whether they are published or not. The documents may come from teaching and research institutions in France or abroad, or from public or private research centers.

L'archive ouverte pluridisciplinaire **HAL**, est destinée au dépôt et à la diffusion de documents scientifiques de niveau recherche, publiés ou non, émanant des établissements d'enseignement et de recherche français ou étrangers, des laboratoires publics ou privés.

General approaches for shear-correcting coordinate transformations in Bragg coherent diffraction imaging. Part I

S. Maddali,^{a,*} P. Li,^b A. Pateras,^{c,d} D. Timbie,^e N. Deegan,^{a,f} A. L. Crook,^{e,g} H. Lee,^e I. Calvo-Almazan,^a D. Sheyfer,^a W. Cha,^h F. J. Heremans,^{a,e,f} D. D. Awschalom,^{a,e,f} V. Chamard,^b M. Allain^b and S. O. Hruszkewycz^a

Received 15 August 2019

Accepted 31 January 2020

Edited by S. Sasaki, Tokyo Institute of Technology, Yokohama, Japan

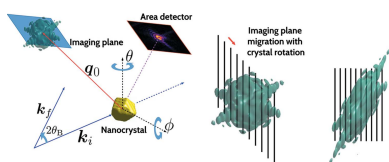
Keywords: Bragg coherent diffraction imaging; phase retrieval; shear correction; coordinate transformation; scattering geometry; Bragg ptychography; conjugate spaces.

^aMaterials Science Division, Argonne National Laboratory, Lemont, IL 60439, USA, ^bAix-Marseille Univ., CNRS, Centrale Marseille, Institut Fresnel, Marseille, France, ^cCenter for Integrated Nanotechnologies, Los Alamos National Laboratory, Los Alamos, NM 87545, USA, ^dMaterials Science and Technology Division, Los Alamos National Laboratory, Los Alamos, NM 87545, USA, ^ePritzker School of Molecular Engineering, University of Chicago, 5640 South Ellis Avenue, Chicago, IL 60637, USA, ^fCenter for Molecular Engineering, Argonne National Laboratory, Lemont, IL 60439, USA, ^gDepartment of Physics, University of Chicago, 5620 South Ellis Avenue, Chicago, IL 60637, USA, and ^hX-ray Science Division, Argonne National Laboratory, Lemont, IL 60439, USA. *Correspondence e-mail: smaddali@anl.gov

This two-part article series provides a generalized description of the scattering geometry of Bragg coherent diffraction imaging (BCDI) experiments, the shear distortion effects inherent in the 3D image obtained from presently used methods and strategies to mitigate this distortion. Part I starts from fundamental considerations to present the general real-space coordinate transformation required to correct this shear, in a compact operator formulation that easily lends itself to implementation with available software packages. Such a transformation, applied as a final post-processing step following phase retrieval, is crucial for arriving at an undistorted, correctly oriented and physically meaningful image of the 3D crystalline scatterer. As the relevance of BCDI grows in the field of materials characterization, the available sparse literature that addresses the geometric theory of BCDI and the subsequent analysis methods are generalized here. This geometrical aspect, specific to coherent Bragg diffraction and absent in 2D transmission CDI experiments, gains particular importance when it comes to spatially resolved characterization of 3D crystalline materials in a reliable nondestructive manner. This series of articles describes this theory, from the diffraction in Bragg geometry to the corrections needed to obtain a properly rendered digital image of the 3D scatterer. Part I of this series provides the experimental BCDI community with the general form of the 3D real-space distortions in the phase-retrieved object, along with the necessary post-retrieval correction method. Part II builds upon the geometric theory developed in Part I with the formalism to correct the shear distortions directly on an orthogonal grid within the phase-retrieval algorithm itself, allowing more physically realistic constraints to be applied. Taken together, Parts I and II provide the X-ray science community with a set of generalized BCDI shear-correction techniques crucial to the final rendering of a 3D crystalline scatterer and for the development of new BCDI methods and experiments.

1. Introduction

Bragg coherent diffraction imaging (BCDI) is a lensless imaging method by which the morphology and internal strain state of compact crystalline objects may be visualized nondestructively (Robinson *et al.*, 2001; Robinson & Harder, 2009; Miao *et al.*, 2015). A 3D rendering of an appropriately oriented crystalline scatterer is obtained by coherently illuminating it with monochromatic X-rays and computationally inverting the acquired 3D diffraction pattern using iterative



phase-retrieval algorithms [Fig. 1(a)] (Fienup, 1982, 1987; Marchesini *et al.*, 2003; Marchesini, 2007). The 3D coherent diffraction pattern is collected in the vicinity of a Bragg peak using a pixelated area detector and by incrementally changing the preferred orientation of the object in the X-ray beam. The method has recently seen increased use at third-generation synchrotron light sources for a variety of static, *in situ* and *operando* studies of materials in environments difficult to access with other characterization methods, *e.g.* elevated temperatures or deeply embedded crystals (Cha *et al.*, 2016; Cherukara *et al.*, 2018; Dupraz *et al.*, 2015; Highland *et al.*, 2017; Hofmann, Tarleton *et al.*, 2017; Ulvestad, Singer *et al.*, 2015; Ulvestad, Welland *et al.*, 2015).

The goal of any coherent diffraction imaging measurement is to numerically compute the complex-valued field of the scattering object from the acquired diffraction pattern. Different variants of coherent diffraction imaging interpret this complex field in different ways. In particular, it represents the local complex refractive index in the case of 2D transmission CDI experiments and the local crystal lattice strain in the case of 3D Bragg scattering geometry. In the specific case of BCDI (which includes beam-scanning techniques like Bragg ptychography; Hruszkewycz, Allain *et al.*, 2017), a single component of the six-parameter strain tensor field within the scatterer bulk is encoded into the complex field of the retrieved object (Robinson & Harder, 2009). Unlike the refractive index which is a scalar invariant, lattice strain components depend intimately on the frame of reference. Thus, accurate representation of the crystalline scatterer in a suitable real-space orthogonal frame is essential for the meaningful interpretation of the object morphology and strain state, and thereby the study of any physical process that may depend on these factors.

In BCDI, this orthogonal rendering is complicated by the fact that the diffraction signal, modeled as the squared modulus of the Fourier transform of the complex field of the scatterer (Goodman, 2005), is necessarily sampled along

non-orthogonal directions. This inevitably imposes a non-orthogonal shear on the axes of the 3D object array obtained from conventional phase retrieval, as we demonstrate in detail in Section 3.3. The non-orthogonal sampling of the 3D space of the scattered signal (hereafter referred to as Fourier space) is intimately connected to experimental considerations such as (i) the pixel size of the area detector, (ii) the object–detector distance, (iii) the X-ray wavelength, (iv) the orientation of the mounted scatterer and (v) the manner of rotation ('rocking') of the scatterer in the X-ray beam. Through the wave-propagation process (here, the Fourier transform), the discrete sampling grid of the reconstructed real-space scatterer is also tightly constrained by these factors and is non-orthogonal in general. A naïve 3D rendering of the phase-retrieval result without accounting for this effect results in a sheared image not truly representative of the physical scatterer. In this paper we rigorously derive the relationship between the two shears in real and Fourier space and provide a prescription to correct the real-space distortion, enabling the correct 3D rendering of the scatterer.

Although BCDI has been steadily gaining popularity within the materials science community as a valuable nanoscale characterization method, existing literature on the underlying geometric theory is as yet sparse. Currently, the available literature consists of general-purpose tools to map Fourier space (Kriegner *et al.*, 2013) and working-rule prescriptions for the post-processing of the phase-retrieval output, tailored for the highly specific experimental geometries of existing BCDI beamline facilities (Pfeifer, 2005; Pateras, 2015; Pateras *et al.*, 2015). In this paper, the first of two parts, we fill this gap in the literature by providing an analysis of the intricate scattering geometry of a BCDI measurement, as well as deriving the general way to correct the 3D distortion. We achieve this by starting from basic considerations and build up to the adaptation to discretely sampled fields, as in a real-world BCDI experiment.

More specifically, Part I of this series describes a method

which takes as its input the geometric configuration of a BCDI experiment and returns a basis of three sampling vectors in 3D real space associated with the three independent axes of the phase-retrieval solution array. This array (representing non-orthogonal samples of the scatterer), when combined with knowledge of the sampling basis, is sufficient to render a physically accurate (albeit shear-sampled) image of the scatterer with one of many available visualization tools such as MATLAB (The MathWorks Inc., Natick, MA, USA), Python or *ParaView* (<https://www.paraview.org/>). Building on this foundation, Part II describes a formal derivation of a modification to the 3D Fourier transformation itself, appropriate for phase retrieval, in which the sheared Fourier-space sampling basis is directly incorporated into the reconstruction of the scatterer on an orthogonal grid.

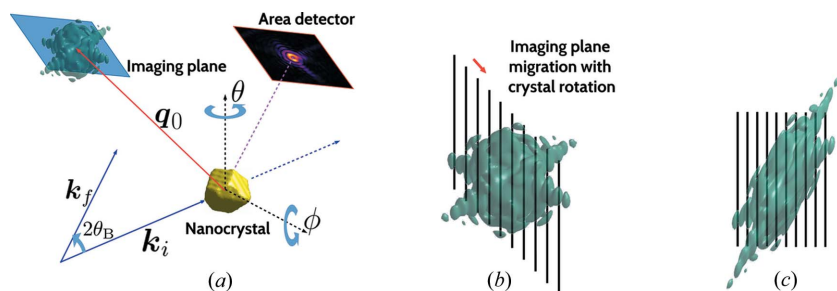


Figure 1

(a) Basic anatomy of a BCDI measurement of an isolated crystalline nanoparticle. Rotating the scatterer in small increments (for instance about the θ direction) causes the reciprocal lattice point q_0 of the scatterer's crystal structure to sweep an incremental angle in Fourier space. The 'rocking' of the crystal's position about the Bragg condition effectively causes the measurement plane of the area detector to interrogate parallel slices of the 3D coherent diffraction pattern. (b) Effective shear in the relative Fourier-space positions of the successive slices acquired by the area detector. The black lines indicate the position of the measurement plane relative to the center of the diffraction pattern. This sampling geometry is typical of crystal rocking about the ϕ axis in (a). (c) Inferred shape of the diffraction pattern if the collected detector images are naively assumed to be orthogonal to each other.

Part I is organized as follows: In Section 2 we describe the dual nature of basis vectors in real and Fourier space, in the continuous and discrete contexts. In Section 3 we provide a generalized treatment of the scattering geometry generally applicable to any BCDI configuration. We then cast the physical quantities and transformation operators thus introduced into orthonormal coordinate frames convenient for realistic sample rendering, thereby demonstrating the ease of implementation of the theory developed in Section 2 using standard software packages. Section 4 describes a demonstrative example of a reconstructed 3D image of a silicon carbide (SiC) nano-particle from data collected at a BCDI facility, in which the computed shear correction is applied to the results of conventional phase retrieval. The image thus obtained is corroborated by scanning electron microscopy (SEM) images of identically fabricated nanoparticles. In Section 5 we close with a summary of our formalism and the shear-correction results.

2. Representation of real and Fourier space

In a BCDI measurement, the discretization of three-dimensional Fourier space is achieved through (i) a pixelated area detector and (ii) finite angular steps in the ‘rocking’ direction along which the scatterer is physically rotated. The sampling directions are determined by geometric considerations such as the placement of the detector (equivalently, the Bragg reflection of interest) and the direction of rocking of the scatterer. These considerations in turn have a direct bearing on the subsequent discretization of the 3D reconstructed object resulting from successful inversion from Fourier to real space.

In this section we set up the mathematical preliminaries for this two-part series. Before we begin, we describe the notation in use. Scalar quantities (real or complex) are denoted by lowercase, non-boldface Greek or Roman letters (r, q, ψ), and two- and three-dimensional vectors by lowercase boldface letters (\mathbf{r}, \mathbf{q}). In addition, the Euclidean (ℓ^2) norm of a vector \mathbf{r} is denoted by $\|\mathbf{r}\|$ and vectors of unit norm are denoted by lowercase boldface letters with a caret ($\hat{\mathbf{s}}, \hat{\mathbf{e}}, \hat{\mathbf{k}}_1$). Matrices representing either rank-2 tensors (such as rotation operators) or three-dimensional basis sets are denoted by uppercase Roman letters, either in boldface (\mathbf{B}, \mathbf{P}) or script font ($\mathcal{R}, \mathcal{D}, \mathcal{I}$). The determinant of a square matrix \mathbf{B} is denoted by $\det \mathbf{B}$.

A representation \mathbf{v} of a three-component physical vector (whether in real or Fourier space) in orthonormal coordinates is related to another (possibly non-orthogonal) representation $\tilde{\mathbf{v}}$ through a linear transformation: $\mathbf{v} = \mathbf{B}\tilde{\mathbf{v}}$, where \mathbf{B} represents the change from the ‘tilded’ to the ‘untilded’ basis. Consider vectors from two Fourier-conjugate spaces, represented in the usual orthonormal reference frames by \mathbf{r} and \mathbf{q} . Let alternative representations $\tilde{\mathbf{r}}$ and $\tilde{\mathbf{q}}$ of these vectors in their respective spaces map to the original representations through the operators \mathbf{B}_r and \mathbf{B}_q , respectively, *i.e.* $\mathbf{r} = \mathbf{B}_r\tilde{\mathbf{r}}$ and $\mathbf{q} = \mathbf{B}_q\tilde{\mathbf{q}}$. The columns of \mathbf{B}_r and \mathbf{B}_q represent triplets of unit-norm basis vectors (directions) that span three-dimensional real and Fourier space, respectively. The physical position vector \mathbf{r} is a

weighted sum of the columns of \mathbf{B}_r , the weights being precisely the components of $\tilde{\mathbf{r}}$. The dimensions of length are incorporated by our convention into the components of $\tilde{\mathbf{r}}$, with the columns of \mathbf{B}_r merely serving as three independent directions in 3D space. Similar reasoning follows for \mathbf{q} , \mathbf{B}_q and $\tilde{\mathbf{q}}$.

The mutually Fourier-conjugate relationship between \mathbf{r} and \mathbf{q} necessitates the following relationship between these matrices, whose columns are the basis vectors (see Appendix A for a derivation):

$$\mathbf{B}_r = \mathbf{B}_q^{-T}, \quad (1)$$

where ‘ $-T$ ’ denotes the inverse of the transpose, or equivalently the transpose of the inverse. We note that we follow the crystallographers’ convention in which the dimensions of \mathbf{r} and \mathbf{q} are strict reciprocals of each other ($q \sim 1/r$), as opposed to the physicists’ convention which includes an extra multiplicative factor ($q \sim 2\pi/r$). The crystallographer’s convention places \mathbf{r} and \mathbf{q} on an equal footing and expresses the complex exponential $\exp(i2\pi\mathbf{r}^T\mathbf{q})$ [where $i = (-1)^{1/2}$] in the ‘symmetric’ form of the continuous Fourier transform (CFT) as a scalar multiplier $\mathbf{r}^T\mathbf{q}$ applied to the angular quantity 2π , which has units of radians.

The approach of equation (1) in BCDI analysis is motivated by the fact that the signal-sampling directions in Fourier space (*i.e.* the columns of \mathbf{B}_q) are determined in a highly nontrivial manner by the experimental geometry, and consequently, so are the directions along which the reconstructed real-space scatterer is sampled (the columns of \mathbf{B}_r).

Consider the case of equation (1) applicable to BCDI measurements in which Fourier space is sampled in integer multiples of step sizes ($\delta q_1, \delta q_2, \delta q_3$) along directions specified by the columns of \mathbf{B}_q . Each position in Fourier space is indexed by the position vector $\mathbf{n} \equiv [i \ j \ k]^T$ such that

$$\mathbf{q} = \mathbf{B}_q \underbrace{\begin{bmatrix} \delta q_1 & & \\ & \delta q_2 & \\ & & \delta q_3 \end{bmatrix}}_{\mathbf{\Lambda}_q} \begin{bmatrix} i \\ j \\ k \end{bmatrix} = \mathbf{B}_q \mathbf{\Lambda}_q \mathbf{n}. \quad (2)$$

Here $\mathbf{\Lambda}_q$ is a diagonal matrix whose elements carry physical dimensions of inverse length. For convenience, we write the discretization as $\mathbf{q} = \mathbf{B}_{\text{recip}}\mathbf{n}$ in terms of \mathbf{n} and the individual Fourier-space steps determined by the columns of the matrix $\mathbf{B}_{\text{recip}} := \mathbf{B}_q\mathbf{\Lambda}_q$, which by convention have dimensions of inverse length. Similarly, the discretization of real space is parameterized by an integer vector $\mathbf{m} \equiv [l \ m \ n]^T$ as

$$\mathbf{r} = \mathbf{B}_r \underbrace{\begin{bmatrix} \delta r_1 & & \\ & \delta r_2 & \\ & & \delta r_3 \end{bmatrix}}_{\mathbf{\Lambda}_r} \begin{bmatrix} l \\ m \\ n \end{bmatrix} = \mathbf{B}_r \mathbf{\Lambda}_r \mathbf{m}. \quad (3)$$

Here we similarly define $\mathbf{B}_{\text{real}} := \mathbf{B}_r\mathbf{\Lambda}_r$, whose columns denote individual real-space steps. In this article we seek to derive the matrix $\mathbf{B}_{\text{recip}}$ and subsequently \mathbf{B}_{real} solely from fundamental considerations of the BCDI experimental geometry.

With the definitions of \mathbf{B}_{real} and $\mathbf{B}_{\text{recip}}$ above, we seek the relation analogous to equation (1) that applies to a discrete

Fourier transform (DFT) on a grid of size $N_1 \times N_2 \times N_3$. Provided the fringe intensity distribution is sufficiently sampled and the experimental Fourier-space aperture is large enough to avoid cyclic aliasing issues, the phase factors in complex exponential kernels in the DFT and CFT are equivalent, implying that

$$2\pi \mathbf{q}^T \mathbf{r} = 2\pi \left(\frac{il}{N_1} + \frac{jm}{N_2} + \frac{kn}{N_3} \right) \Rightarrow (\mathbf{n}^T \mathbf{B}_{\text{recip}}^T) (\mathbf{B}_{\text{real}} \mathbf{m})$$

$$= \mathbf{n}^T \underbrace{\begin{bmatrix} N_1^{-1} & & \\ & N_2^{-1} & \\ & & N_3^{-1} \end{bmatrix}}_{\mathcal{D}} \mathbf{m} \quad \forall \mathbf{m}, \mathbf{n} \in \mathbb{Z}^3 \quad (4)$$

$$\Rightarrow \mathbf{B}_{\text{recip}}^{-T} \mathcal{D} \mathbf{B}_{\text{real}}^{-1} = \mathcal{I}, \quad (5)$$

where \mathcal{I} is the 3×3 identity matrix. Equation (5) is the discrete analog of equation (1). At this point we note its equivalence to other documented prescriptions that relate conjugate sampling bases of the general form

$$\begin{cases} \mathbf{B}_{\text{real}} \equiv [\hat{\mathbf{e}}'_1 & \hat{\mathbf{e}}'_2 & \hat{\mathbf{e}}'_3] \Lambda_r, \\ \mathbf{B}_{\text{recip}} \equiv [\hat{\mathbf{k}}'_1 & \hat{\mathbf{k}}'_2 & \hat{\mathbf{k}}'_3] \Lambda_q. \end{cases} \quad (6)$$

Here the primed quantities $\hat{\mathbf{e}}'_i$ and $\hat{\mathbf{k}}'_i$ denote unit-norm sampling directions (not necessarily mutually orthogonal) in real and Fourier space, respectively. The columns of $\mathbf{B}_{\text{real}} = \mathbf{B}_{\text{recip}}^{-T} \mathcal{D}$ are given by

$$\delta r_1 \hat{\mathbf{e}}'_1 = \frac{1}{N_1} \frac{\delta q_2 \hat{\mathbf{k}}'_2 \times \delta q_3 \hat{\mathbf{k}}'_3}{(\delta q_1 \delta q_2 \delta q_3) \hat{\mathbf{k}}'_1 \cdot \hat{\mathbf{k}}'_2 \times \hat{\mathbf{k}}'_3} = \frac{1}{V_{123}} N_2 \delta q_2 \hat{\mathbf{k}}'_2 \times N_3 \delta q_3 \hat{\mathbf{k}}'_3, \quad (7)$$

$$\delta r_2 \hat{\mathbf{e}}'_2 = \frac{1}{V_{123}} N_3 \delta q_3 \hat{\mathbf{k}}'_3 \times N_1 \delta q_1 \hat{\mathbf{k}}'_1, \quad (8)$$

$$\delta r_3 \hat{\mathbf{e}}'_3 = \frac{1}{V_{123}} N_1 \delta q_1 \hat{\mathbf{k}}'_1 \times N_2 \delta q_2 \hat{\mathbf{k}}'_2, \quad (9)$$

where ‘ \cdot ’ and ‘ \times ’ denote the dot product and cross product, respectively, and $V_{123} := (N_1 \delta q_1)(N_2 \delta q_2)(N_3 \delta q_3) \hat{\mathbf{k}}'_1 \cdot \hat{\mathbf{k}}'_2 \times \hat{\mathbf{k}}'_3 = \det(\mathbf{B}_{\text{recip}} \mathcal{D}^{-1})$ is the total Fourier-space volume queried over the entire BCDI scan. Up to the conventional multiplicative factor of 2π mentioned earlier, equations (7), (8) and (9) are identical to the several familiar prescriptions for coordinate inversions found in the existing literature (Pfeifer, 2005; Berenguer *et al.*, 2013; Pateras, 2015; Yang *et al.*, 2019).

In addition, they are reminiscent of the conversion between the primitive vectors of an atomic crystal’s real-space and reciprocal-space Bravais lattices, from solid-state physics (Shmueli, 2001). Up to the effect of finite Fourier-space volume (represented by the scaling factor of $1/N_i$ in each direction), the relationship between \mathbf{B}_{real} and $\mathbf{B}_{\text{recip}}$ mirrors the relationship between the primitive vectors of these Bravais lattices. This is because both relations have their origins in the underlying concept of far-field coherent diffraction from an array of regularly spaced point scatterers. In the context of BCDI phase retrieval, these point scatterers represent digi-

tized samples of a numeric diffracting object, while in a crystal lattice they represent actual atomic electron clouds.

We now briefly show that the use of equation (5) is unaffected by the real-space and Fourier-space origin offsets characteristic of BCDI measurements. Vartanyants & Robinson (2001) describe an *ab initio* treatment of the various phase effects in a BCDI diffracted wavefield as a result of origin offsets. We consider a discrete sample point \mathbf{q} in Fourier space in the vicinity of a Bragg peak located at \mathbf{q}_0 , in relation to an (as yet unspecified) origin:

$$\mathbf{q} = \mathbf{q}_0 + \mathbf{B}_{\text{recip}} \mathbf{n}. \quad (10)$$

Analogously in real space, the complex-valued scatterer is sampled at points \mathbf{r} given by

$$\mathbf{r} = \mathbf{r}_0 + \mathbf{B}_{\text{real}} \mathbf{m}. \quad (11)$$

In this formulation, \mathbf{r}_0 and \mathbf{q}_0 are chosen as arbitrary constant offsets in real and Fourier space, even though \mathbf{q}_0 is in fact determined by the Bragg scattering geometry, as seen in Section 3. The complex phase factor now becomes

$$\mathbf{q}^T \mathbf{r} = \mathbf{q}_0^T \mathbf{r}_0 + \mathbf{q}_0^T \mathbf{B}_{\text{real}} \mathbf{m} + \mathbf{n}^T \mathbf{B}_{\text{recip}}^T \mathbf{r}_0 + \mathbf{n}^T \mathbf{B}_{\text{recip}}^T \mathbf{B}_{\text{real}} \mathbf{m}. \quad (12)$$

We see that the only relevant contribution to the measured signal comes from the last term: $\mathbf{n}^T \mathbf{B}_{\text{recip}}^T \mathbf{B}_{\text{real}} \mathbf{m}$. The measured diffraction intensity is not affected by the uniform phase offset of the outgoing wavefield ($\mathbf{q}_0^T \mathbf{r}_0$), or by the phase ramps resulting from the absolute offset of the scatterer in real space ($\mathbf{n}^T \mathbf{B}_{\text{recip}}^T \mathbf{r}_0$) or Fourier space ($\mathbf{q}_0^T \mathbf{B}_{\text{real}} \mathbf{m}$). In practice, this last term is explicitly set to zero by enforcing that the maximum of the Bragg peak is centered in the numerical array.

We therefore see that, as far as the measured intensity distribution is concerned, the constant real- and Fourier-space offsets \mathbf{q}_0 and \mathbf{r}_0 characteristic of a BCDI measurement may be set to zero without loss of generality. This allows us to apply equation (5) directly to the BCDI sampling bases in real and Fourier space.

We note that the method developed to compute \mathbf{B}_{real} for use in equation (11) merely seeks to associate a sheared sampling basis with the three independent axes of the phase-retrieval solution array. In other words, the coordinate transformation $\mathbf{m} \rightarrow \mathbf{B}_{\text{real}} \mathbf{m}$ of discrete pixels to the correct points in real space serves to inform the physically accurate rendering of the scatterer. The rendering itself (albeit on the sheared sampling grid) may be achieved with one of many available software packages for 3D visualization. We have compared pre-transformation ($\mathbf{r} = \mathbf{m}$) and post-transformation ($\mathbf{r} = \mathbf{B}_{\text{real}} \mathbf{m}$) renderings of a phase-retrieved object from a real-world BCDI measurement in Section 4.

One potential shortcoming of this rendering convention is the subsequent computation of local lattice strain in the crystalline scatterer, which requires evaluation of the spatial gradient of the complex phase at these sheared grid points, in non-orthogonal coordinates. Under these circumstances, the complex phase in real space may first be approximated at the nodes of a new orthogonal grid *via* interpolation, followed by the usual computation of the gradient in orthogonal coordinates (Newton *et al.*, 2010; Hofmann, Phillips *et al.*, 2017).

Alternatively, one may do away with real-space interpolation altogether and directly compute the correct strain component at each non-orthogonal grid point. For the interested reader, we derive this latter computation in Appendix B.

3. Quantitative aspects of BCDI

Having established the use of equation (5) for the purposes of BCDI, we proceed to a general description of the geometry of a BCDI measurement. In Section 3.1 we first provide a symbolic frame-agnostic description of the relevant degrees of freedom and vector quantities in a BCDI experiment. In Section 3.2 we describe the relevant orthonormal coordinate frames in which to analytically represent these quantities and cast the subsequent discussion on BCDI geometry that is the subject of this article. In Section 3.3 we finally derive the analytical expressions of the relevant vector quantities and rotation operators, with respect to the appropriate coordinate frame. We refer to the schematic in Fig. 2.

3.1. Scattering preliminaries

3D BCDI datasets are obtained by illuminating an isolated single-crystal scatterer with a coherent X-ray beam and rotating it about a fixed axis in small steps. The face of the detector is typically aligned perpendicular to the exit beam and defines the Fourier-space measurement plane. Each rotational step of the scatterer incrementally rotates the 3D coherent diffraction pattern (centered at a reciprocal lattice point) through the Fourier-space aperture in the detector plane. The path traversed by the center of the Bragg peak nominally lies on a circular arc along the Ewald sphere for the family of Bragg reflections. Subsequently, the points at which the detector samples the 3D intensity distribution are rectilinear in the detector plane (owing to square pixels), but strictly curvilinear in the rocking direction. For typical BCDI measurements at hard X-ray wavelengths ($\lambda \simeq 0.1$ nm) and with object–detector distances of ~ 1 m, the object is rotated through an angular interval of $\sim 0.3^\circ \simeq 5 \times 10^{-3}$ rad, which is the angle subtended by the Ewald sphere arc at the Fourier-

space origin. For rotation increments within this interval (typically 0.01° to ensure fringe oversampling in this direction), the intermediate translation of the imaging plane when viewed relative to the Bragg peak may be approximated as rectilinear. In this manner, the diffraction pattern is measured slice by slice within a rhomboidal volume of Fourier space, resulting in a 3D data array with indices $\mathbf{n} = [i\ j\ k]$, where i and j correspond to the pixel coordinates of the detector and k corresponds to angular increments. A typical size for this data array is $\sim 256 \times 256 \times 64$ (Cha *et al.*, 2016). Though parallel, the measured slices are not sampled in an orthogonal manner, as we shall see with the explicit derivation of the sampling vectors \mathbf{q}_i , \mathbf{q}_j and \mathbf{q}_k .

An arbitrary point in Fourier space is determined on an absolute scale by $\mathbf{q} = \mathbf{k}_f - \mathbf{k}_i$, where \mathbf{k}_i and \mathbf{k}_f are the wave-vectors of the incident and scattered X-rays, respectively, and $\|\mathbf{k}_i\| = \|\mathbf{k}_f\| = 1/\lambda$, the reciprocal of the X-ray wavelength. One such point \mathbf{q}_0 corresponds to the center of the Bragg reflection, a location easily identified in BCDI data as the peak of the intensity distribution. \mathbf{q}_0 sweeps through a small angle $\Delta\Omega$ between successive image acquisitions. In the Fig. 2 schematic, the crystal is rotated about the $\hat{\mathbf{s}}_2$ direction, as is common practice at conventional BCDI facilities like the 34-ID-C end station of the Advanced Photon Source. The resulting displacement of the measurement plane with respect to the diffraction pattern has a magnitude $\|\mathbf{q}_0\|\Delta\Omega$ in Fourier space. This quantity, equal to $\|\mathbf{q}_k\|$ (*i.e.* the third Fourier-space sampling vector) is derived explicitly in Section 3.3.

The discretized sampling of the relative Fourier-space position $\mathbf{q} - \mathbf{q}_0$ as a result of the pixel measurements and the rotational positions of the scatterer can be written in a consolidated manner: $\mathbf{q} - \mathbf{q}_0 = \mathbf{B}_{\text{recip}}\mathbf{n}$, where $\mathbf{B}_{\text{recip}} = [\mathbf{q}_i\ \mathbf{q}_j\ \mathbf{q}_k]$ comes from equation (10). Furthermore, we note two characteristics that hold for BCDI measurements:

(1) When the detector face is oriented along the measurement plane, we have $\mathbf{q}_i \perp \mathbf{q}_j$, but the Bragg scattering geometry ensures that the two are never simultaneously perpendicular to \mathbf{q}_k . This is proved rigorously in Section 3.3 and is the reason for the sheared sense of Fourier-space sampling.

(2) The norms of these sampling vectors in Fourier space are given by

$$\|\mathbf{q}_i\| = \|\mathbf{q}_j\| = p/\lambda D, \quad (13)$$

$$\|\mathbf{q}_k\| = \|\mathbf{q}_0\|\Delta\Omega = 2(\Delta\Omega) \sin \theta_B/\lambda, \quad (14)$$

where p is the physical pixel size, λ is the wavelength of illumination, θ_B is the Bragg angle of scattering, D is the object–detector distance and $\Delta\Omega$ is the magnitude of the angle swept by \mathbf{q}_0 as a result of the rotation of the crystal by a single angular increment. The numerical value of $\Delta\Omega$ is specific to a given diffractometer setup.

3.2. Coordinate conventions

The vector and matrix quantities introduced thus far in Section 3.1 are symbolic in nature without explicit representation in a coordinate frame, and the relations between

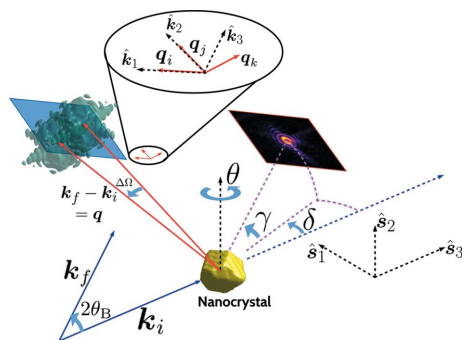


Figure 2

Basic geometry of a BCDI measurement. Also shown are the laboratory frame $\mathbf{B}_{\text{lab}} \equiv [\hat{\mathbf{s}}_1\ \hat{\mathbf{s}}_2\ \hat{\mathbf{s}}_3]$, the detector frame $\mathbf{B}_{\text{det}} \equiv [\hat{\mathbf{k}}_1\ \hat{\mathbf{k}}_2\ \hat{\mathbf{k}}_3]$, and the sampling basis for Fourier space imposed by the scattering and object-rotation geometry $\mathbf{B}_{\text{recip}} \equiv [\mathbf{q}_i\ \mathbf{q}_j\ \mathbf{q}_k]$. The γ and δ degrees of freedom are specific to the 34-ID-C end station of the Advanced Photon Source.

them are true for any BCDI configuration. We now enumerate the bases in which these quantities are most naturally expressed in order to develop the numerical machinery for our demonstrative examples. The frames we define are seen in Fig. 2:

(1) We choose as a reference frame the synchrotron-based orthonormal laboratory frame denoted by the matrix of column vectors of unit norm $\mathbf{B}_{\text{lab}} \equiv [\hat{\mathbf{s}}_1 \ \hat{\mathbf{s}}_2 \ \hat{\mathbf{s}}_3]$, in which $\hat{\mathbf{s}}_3$ points along the incident beam (downstream) and $\hat{\mathbf{s}}_2$ points vertically upward. This is the orthonormal frame chosen for the display of the final BCDI reconstruction.

(2) A second frame, $\mathbf{B}_{\text{det}} \equiv [\hat{\mathbf{k}}_1 \ \hat{\mathbf{k}}_2 \ \hat{\mathbf{k}}_3]$, is attached to the detector. This frame is instrumental in determining the first two of the three sampling vectors ($\mathbf{q}_i, \mathbf{q}_j, \mathbf{q}_k$), as we shall demonstrate presently. Two of the three mutually orthogonal directions of this frame lie in the measurement plane, while the third is perpendicular to it, in the direction of the (nominal) exit beam. When the detector face is aligned with the measurement plane (*i.e.* the detector is perpendicular to the exit beam), the directions of \mathbf{q}_i and \mathbf{q}_j coincide with the axes of this frame.

This second coordinate frame has been used in several studies in BCDI and Bragg ptychography (Cha *et al.*, 2016; Hruszkewycz *et al.*, 2012; Hruszkewycz, Allain *et al.*, 2017; Hruszkewycz, Cha *et al.*, 2017). In transmission mode (*i.e.* the direct beam is incident upon the detector), \mathbf{B}_{det} coincides exactly with \mathbf{B}_{lab} in terms of orientation. At the 34-ID-C end station of the Advanced Photon Source (dedicated to BCDI measurements), the change in detector placement from transmission mode to Bragg mode is achieved with two rotational motors. This corresponds to a two-parameter transformation (*i.e.* corresponding to the γ and δ angular rotations from Fig. 2) that takes the axes of the frame \mathbf{B}_{lab} to the position \mathbf{B}_{det} . We derive the general expression for this transformation in Section 3.3.

Central to the implementation of rotations in any diffractometer configuration is a way to compute a generic rotation operator. This is mathematically described as actively rotating a vector \mathbf{v} about a direction $\hat{\mathbf{u}}$ by an angle α in a right-handed sense, with the understanding that \mathbf{v} and $\hat{\mathbf{u}}$ are expressed in the same frame of reference. Such a matrix is given by (Rodrigues, 1840)

$$\mathcal{R}(\alpha, \hat{\mathbf{u}}) = (\cos \alpha) \mathcal{I} + (1 - \cos \alpha) \hat{\mathbf{u}} \hat{\mathbf{u}}^T + (\sin \alpha) \mathbf{S}_{\hat{\mathbf{u}}}, \quad (15)$$

where $\hat{\mathbf{u}} \hat{\mathbf{u}}^T$ is the projector onto $\hat{\mathbf{u}}$ and

$$\mathbf{S}_{\hat{\mathbf{u}}} = \begin{bmatrix} 0 & -u_3 & u_2 \\ u_3 & 0 & -u_1 \\ -u_2 & u_1 & 0 \end{bmatrix} \quad (16)$$

is the skew-symmetric matrix constructed from the components of $\hat{\mathbf{u}}$, or equivalently the linear-operator version of the cross product $\mathbf{S}_{\hat{\mathbf{u}}} \mathbf{v} = \hat{\mathbf{u}} \times \mathbf{v}$.

3.3. Sampling geometry

In the laboratory frame, the axes of the laboratory frame itself are trivially expressed as the columns of the identity matrix:

$$\mathbf{B}_{\text{lab}} = \mathcal{I}. \quad (17)$$

Put another way, in the laboratory frame, $\hat{\mathbf{s}}_1 = [1 \ 0 \ 0]^T$, $\hat{\mathbf{s}}_2 = [0 \ 1 \ 0]^T$ and $\hat{\mathbf{s}}_3 = [0 \ 0 \ 1]^T$. Then from Fig. 2 (the arrangement at 34-ID-C), the orientation of the detector frame \mathbf{B}_{det} is achieved by an active rotation of the laboratory frame, which is composed of two rotations of the type denoted in equation (15), acting upon each of the constituent basis vectors:

$$\mathbf{B}_{\text{det}} = \mathcal{R}(\delta, \hat{\mathbf{s}}_2) \mathcal{R}(\gamma, -\hat{\mathbf{s}}_1) \mathbf{B}_{\text{lab}} = \mathcal{R}(\delta, \hat{\mathbf{s}}_2) \mathcal{R}(\gamma, -\hat{\mathbf{s}}_1). \quad (18)$$

In the laboratory frame, the matrix expressions for these two rotation operators are given by equation (15) with $\hat{\mathbf{s}}_1 = [1 \ 0 \ 0]^T$ and $\hat{\mathbf{s}}_2 = [0 \ 1 \ 0]^T$:

$$\mathcal{R}(\gamma, -\hat{\mathbf{s}}_1) = \begin{bmatrix} 1 & 0 & 0 \\ 0 & \cos \gamma & \sin \gamma \\ 0 & -\sin \gamma & \cos \gamma \end{bmatrix} \quad (19)$$

and

$$\mathcal{R}(\delta, \hat{\mathbf{s}}_2) = \begin{bmatrix} \cos \delta & 0 & \sin \delta \\ 0 & 1 & 0 \\ -\sin \delta & 0 & \cos \delta \end{bmatrix}, \quad (20)$$

leading to

$$\mathbf{B}_{\text{det}} = \begin{bmatrix} \cos \delta & -\sin \gamma \sin \delta & \cos \gamma \sin \delta \\ 0 & \cos \gamma & \sin \gamma \\ -\sin \delta & -\cos \delta \sin \gamma & \cos \delta \cos \gamma \end{bmatrix}. \quad (21)$$

We note from Fig. 2 that the negative sign in the γ rotation above is necessary since the motor configuration at 34-ID-C results in a clockwise rotation about the positive $\hat{\mathbf{s}}_1$ direction. The columns of \mathbf{B}_{det} in equation (21) denote the unit-norm axes $\hat{\mathbf{k}}_1, \hat{\mathbf{k}}_2, \hat{\mathbf{k}}_3$ of the detector frame, each expressed in the laboratory frame. We note that the first two columns of \mathbf{B}_{det} are also the directions of Fourier-space sampling vectors \mathbf{q}_i and \mathbf{q}_j from Fig. 2.

We next derive the expression for the third sampling vector \mathbf{q}_k . The location of the Bragg peak \mathbf{q}_0 in Fourier space is computed analytically using \mathbf{k}_i and \mathbf{k}_f in the following manner (where $\hat{\mathbf{s}}_3$ is the downstream direction):

$$\begin{aligned} \mathbf{k}_i &= \frac{1}{\lambda} \hat{\mathbf{s}}_3 \\ \mathbf{k}_f &= \frac{1}{\lambda} \underbrace{[\mathcal{R}(\delta, \hat{\mathbf{s}}_2) \mathcal{R}(\gamma, -\hat{\mathbf{s}}_1)]}_{\text{composite rotation operator}} \hat{\mathbf{s}}_3 \\ \Rightarrow \mathbf{q}_0 &= \mathbf{k}_f - \mathbf{k}_i = \frac{1}{\lambda} [\mathcal{R}(\delta, \hat{\mathbf{s}}_2) \mathcal{R}(\gamma, -\hat{\mathbf{s}}_1) - \mathcal{I}] \hat{\mathbf{s}}_3. \end{aligned} \quad (22)$$

As mentioned earlier, the magnitude of \mathbf{q}_k is given by the sweep step of the reciprocal lattice vector \mathbf{q}_0 due to the incremental rotation of the scatterer. The rotation in question is determined by the single angular step $\Delta\theta$ about the $\hat{\mathbf{s}}_2$ axis according to Fig. 2 [we note that this is not always the case; for

example, in the article by Cha *et al.* (2016), the object rotation is about the $\hat{\mathbf{s}}_1$ axis]. The change in \mathbf{q}_0 is given by

$$\Delta \mathbf{q}_0 := \mathcal{R}(\Delta\theta, \hat{\mathbf{s}}_2) \mathbf{q}_0 - \mathbf{q}_0 = [\mathcal{R}(\Delta\theta, \hat{\mathbf{s}}_2) - \mathcal{I}] \mathbf{q}_0 \quad (23)$$

$$= \frac{1}{\lambda} [\mathcal{R}(\Delta\theta, \hat{\mathbf{s}}_2) - \mathcal{I}] [\mathcal{R}(\delta, \hat{\mathbf{s}}_2) \mathcal{R}(\gamma, -\hat{\mathbf{s}}_1) - \mathcal{I}] \hat{\mathbf{s}}_3 \quad (24)$$

[using equation (22)]. We finally note that, regardless of how \mathbf{q}_0 is rotated while rocking the scatterer, \mathbf{q}_k is the displacement of the measurement plane relative to the center of the coherent intensity distribution and therefore the negative of $\Delta \mathbf{q}_0$. Keeping in mind that the norms of \mathbf{q}_i and \mathbf{q}_j are both $p/\lambda D$ from Section 3.1, we write down the simplified final expressions for the sampling vectors in Fourier space, still expressed in the laboratory frame:

$$\mathbf{q}_i := \frac{p}{\lambda D} \hat{\mathbf{k}}_1 = \frac{p}{\lambda D} \begin{bmatrix} \cos \delta \\ 0 \\ -\sin \delta \end{bmatrix}, \quad (25)$$

$$\mathbf{q}_j := \frac{p}{\lambda D} \hat{\mathbf{k}}_2 = \frac{p}{\lambda D} \begin{bmatrix} -\sin \gamma \sin \delta \\ \cos \gamma \\ -\cos \delta \sin \gamma \end{bmatrix}, \quad (26)$$

$$\begin{aligned} \mathbf{q}_k &:= -\Delta \mathbf{q}_0 \\ &= -\frac{1}{\lambda} \begin{bmatrix} \sin \delta \cos \gamma (\cos \Delta\theta - 1) + \sin \Delta\theta (\cos \delta \cos \gamma - 1) \\ (\cos \delta \cos \gamma - 1)(\cos \Delta\theta - 1) - \cos \gamma \sin \delta \sin \Delta\theta \end{bmatrix}, \end{aligned} \quad (27)$$

$$= \frac{\Delta\theta}{\lambda} \begin{bmatrix} 1 - \cos \gamma \cos \delta \\ 0 \\ \cos \gamma \sin \delta \end{bmatrix} + \mathcal{O}(\Delta\theta^2). \quad (28)$$

Equation (28) highlights the first-order dependence of \mathbf{q}_k on the small rocking step $\Delta\theta$, obtained through a Taylor series expansion. The sampling basis matrix $\mathbf{B}_{\text{recip}}$ is obtained by concatenating the numerically evaluated expressions for the sampling vectors: $\mathbf{B}_{\text{recip}} = [\mathbf{q}_i \ \mathbf{q}_j \ \mathbf{q}_k]$. The relations (25), (26) and (27) explicitly demonstrate the highly intricate relationship between the experimental considerations, such as the scattering and sample rotation geometries, and the manner in which Fourier space is discretely sampled. Specifically, in the Bragg geometry, the projections $\mathbf{q}_i^T \mathbf{q}_k$ and $\mathbf{q}_j^T \mathbf{q}_k$ cannot simultaneously be zero, implying that in BCDI the sampling grid in Fourier space is inevitably non-orthogonal. The computation of the discrete Fourier-space points spanned by $\mathbf{B}_{\text{recip}}$ for a variety of standard goniometer geometries is in fact the primary function of the software package *xrayutilities* (Kriegner *et al.*, 2013).

We now examine equations (25) and (27) in the pathological case of $\delta = 0$ but $\gamma \neq 0$, for which we show that it is impossible to acquire a 3D BCDI signal. Under these conditions, the incident and exit beams lie in the vertical $(\hat{\mathbf{s}}_2, \hat{\mathbf{s}}_3)$ plane and equations (25) and (27) become

$$\mathbf{q}_i = \frac{p}{\lambda D} \begin{bmatrix} 1 \\ 0 \\ 0 \end{bmatrix}, \quad (29)$$

$$\mathbf{q}_k = -\frac{1}{\lambda} \begin{bmatrix} (\cos \gamma - 1) \Delta\theta \\ 0 \\ 0 \end{bmatrix} + \mathcal{O}(\Delta\theta^2). \quad (30)$$

From equations (29) and (30), in the approximation of small rocking steps $\Delta\theta$ about the $\hat{\mathbf{s}}_2$ direction, we deduce that two of the three Fourier-space sampling vectors are parallel and therefore not mutually linearly independent, rendering it impossible to sample a nonzero Fourier-space volume for the 3D BCDI measurement. Such a scenario more generally occurs when the rocking axis (in this case, $\hat{\mathbf{s}}_2$) is improperly chosen to lie in the plane defined by \mathbf{k}_i and \mathbf{k}_f . For this reason, this axis is ideally chosen to lie well outside this plane in any BCDI measurement. A particularly favorable case is when the rocking axis is perpendicular to this plane, a configuration sometimes referred to as a symmetric θ - 2θ geometry (Cha *et al.*, 2016; Hruszkewycz, Allain *et al.*, 2017). In our special case of $\delta = 0$ and $\gamma \neq 0$, the symmetric θ - 2θ geometry dictates a rotational increment by the angular step $\Delta\theta$ about $\hat{\mathbf{s}}_1$ instead of $\hat{\mathbf{s}}_2$. The rotation matrix $\mathcal{R}(\Delta\theta, \hat{\mathbf{s}}_2)$ in equation (23) is thus replaced with $\mathcal{R}(\Delta\theta, \hat{\mathbf{s}}_1)$ in the analysis (a different sample rotation motor is typically chosen to achieve this in practice). This results in the following modified expressions for the Fourier-space sampling vectors:

$$\mathbf{q}_i^{(\theta-2\theta)} = \frac{p}{\lambda D} \begin{bmatrix} 1 \\ 0 \\ 0 \end{bmatrix}, \quad (31)$$

$$\mathbf{q}_j^{(\theta-2\theta)} = \frac{p}{\lambda D} \begin{bmatrix} 0 \\ \cos \gamma \\ -\sin \gamma \end{bmatrix}, \quad (32)$$

$$\begin{aligned} \mathbf{q}_k^{(\theta-2\theta)} &= -\frac{1}{\lambda} \begin{bmatrix} 0 \\ (\cos \Delta\theta - 1) \sin \gamma - (\cos \gamma - 1) \sin \Delta\theta \\ (\cos \gamma - 1)(\cos \Delta\theta - 1) + \sin \gamma \sin \Delta\theta \end{bmatrix} \\ &= \frac{\Delta\theta}{\lambda} \begin{bmatrix} 0 \\ \cos \gamma - 1 \\ -\sin \gamma \end{bmatrix} + \mathcal{O}(\Delta\theta^2). \end{aligned} \quad (33)$$

We see from equations (31), (32) and (33) that, in the symmetric θ - 2θ geometry, the new sampling vectors are indeed non-coplanar, allowing one to interrogate a finite 3D Fourier-space volume. This configuration is adopted in Bragg ptychography measurements and also in the main derivations of Part II.

In our derivations so far, we have chosen for visual clarity to express the experimental degrees of freedom and the eventual reconstruction in the universal frame \mathbf{B}_{lab} . In a completely equivalent treatment, the same analysis may also be developed entirely with respect to the detector frame \mathbf{B}_{det} instead of \mathbf{B}_{lab} , provided the relevant vectors and rotation operators are formulated correctly. This is in fact the natural frame of choice in Bragg ptychography applications and has been adopted in Part II, whose starting point is the theory developed so far. In order to reconcile these two frames we now provide a prescription to transform physical quantities seamlessly from

one to the other. Any laboratory-frame vector \mathbf{v} can be converted into the corresponding detector-frame representation \mathbf{v}' by projection along the axes of \mathbf{B}_{det} :

$$\mathbf{v}' = \mathbf{B}_{\text{det}}^T \mathbf{v}. \quad (34)$$

The reverse transformation from the detector- to the laboratory-frame representation is also achieved in a straightforward manner:

$$\mathbf{v} = \mathbf{B}_{\text{det}}^{-T} \mathbf{v}' = \mathbf{B}_{\text{det}} \mathbf{v}' \quad (35)$$

(since \mathbf{B}_{det} is orthogonal). Any rotation matrix \mathcal{R} defined with respect to the laboratory frame may be transformed to its detector-frame representation \mathcal{R}' through the following similarity transformation:

$$\mathcal{R}' = \mathbf{B}_{\text{det}}^T \mathcal{R} \mathbf{B}_{\text{det}}. \quad (36)$$

It follows from equation (34) that the laboratory-frame sampling basis $\mathbf{B}_{\text{recip}} = [\mathbf{q}_i \ \mathbf{q}_j \ \mathbf{q}_k]$ defined by equations (25), (26) and (27) is transformed to the detector frame by

$$\mathbf{B}_{\text{recip}} \xrightarrow[\text{frame}]{\text{to det.}} \mathbf{B}_{\text{det}}^T \mathbf{B}_{\text{recip}}, \quad (37)$$

where \mathbf{B}_{det} is computed numerically from equation (21). In either frame, the corresponding real-space sampling basis \mathbf{B}_{real} of the final BCDI reconstruction may be computed from $\mathbf{B}_{\text{recip}}$ using equation (5).

In Section 4 we describe an example of a BCDI reconstruction that implements the computational machinery that has been developed in this section.

4. An example: BCDI on an isolated nanoparticle

With the theoretical and computational machinery developed in Section 3, we are now in a position to demonstrate the effect of sampling-induced shear in the reconstruction of a real-world nanoparticle imaged at a BCDI facility. In our demonstrative example, the coherent diffraction from a compact isolated nanoparticle of silicon carbide (SiC) was collected at the 34-ID-C end station of the Advanced Photon Source. This

Table 1

Experimental parameters of the SiC nanocrystal BCDI scan, measured at Beamline 34-ID-C at the Advanced Photon Source.

Refer to Fig. 2 for the experimental geometry.

Parameter	Value	Description
E	9 keV	Beam energy
λ	1.378 Å	Wavelength
$\Delta\theta$	0.0023°	Angular increment
D	2.0 m	Object–detector distance
γ	11.104°	Detector alignment (elevation)
δ	29.607°	Detector alignment (azimuth)
p	55×10^{-6} m	Pixel size
(N_1, N_2, N_3)	(256, 256, 100)	Pixel array dimensions

nanoparticle was one of many nominally identical, tapered pillars with flat tops and bottoms, drop-cast onto an Si substrate after extraction from an etched SiC bulk single-crystal substrate. A single such nanoparticle was chosen for imaging purposes. The particulars of the experimental parameters during the BCDI measurement are given in Table 1.

Armed with this information, we may compute the following quantities in the laboratory frame:

$$\mathbf{B}_{\text{det}} = \begin{bmatrix} 0.869435 & -0.095149 & 0.484799 \\ 0 & 0.981279 & 0.19259 \\ -0.494048 & -0.167445 & 0.853158 \end{bmatrix} \quad (38)$$

[from equation (21)],

$$\mathbf{B}_{\text{recip}} = \begin{bmatrix} 173445.418 & -18981.475 & 42763.895 \\ 0 & 195757.552 & 0 \\ -98558.742 & -33403.935 & 141174.943 \end{bmatrix} \text{ m}^{-1} \quad (39)$$

[from equations (25), (26) and (27)] and finally from equation (5)

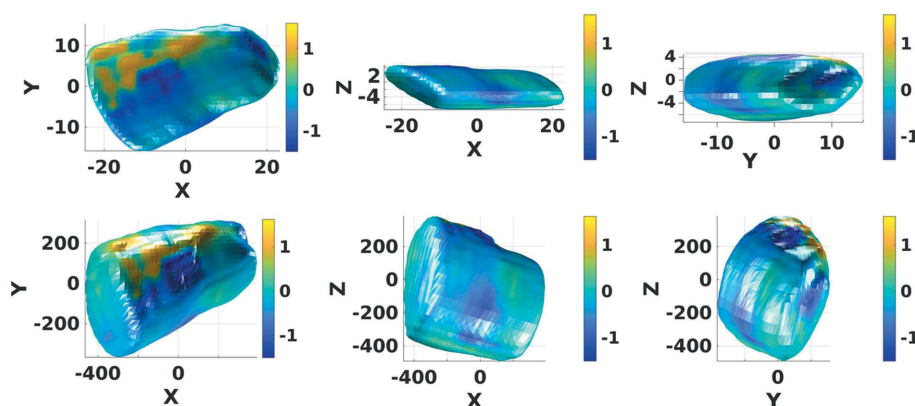


Figure 3

Isosurface plots of the reconstructed object (XY , YZ and XZ views), with the color scale depicting complex phase in radians. (Top row) Direct isosurface plot of the scatterer from the phase-retrieval solution array, without the required shear correction. Axis units are in pixels. (Bottom row) Isosurface plots after the shear correction has been applied ($\mathbf{r} = \mathbf{B}_{\text{real}} \mathbf{m}$). Axis dimensions are in nanometres and the X , Y and Z axes correspond to the laboratory-frame directions $\hat{\mathbf{s}}_1$, $\hat{\mathbf{s}}_2$ and $\hat{\mathbf{s}}_3$, respectively.

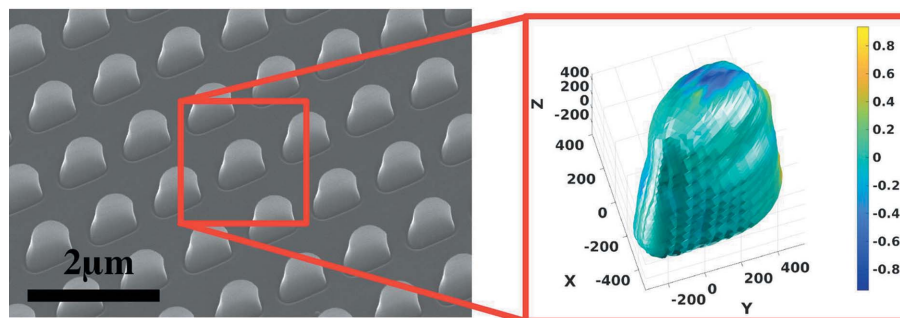


Figure 4

Comparison of the shear-corrected BCDI rendering of the SiC nanoparticle with a SEM image. In contrast to Fig. 3, this BCDI rendering has been artificially reoriented to match the view of the nanoparticles in the SEM image, shown here on the original etched SiC block. This view is no longer in the synchrotron laboratory frame. Here, the inherent mathematical degeneracy in the phase-retrieval inverse problem [*i.e.* if $\psi(\mathbf{r})$ is a real-space solution for an observed BCDI diffraction pattern then so is $\psi^*(-\mathbf{r})$] was resolved by choosing the solution that most closely reproduced the asymmetric morphological features of the SiC particle in the SEM image, after application of the shear correction.

$$\mathbf{B}_{\text{real}} = \mathbf{B}_{\text{recip}}^{-T} \begin{bmatrix} 256^{-1} & & \\ & 256^{-1} & \\ & & 100^{-1} \end{bmatrix} = \begin{bmatrix} 19.214 & 0 & 34.340 \\ 0.870 & 19.955 & 13.642 \\ -5.820 & 0 & 60.432 \end{bmatrix} \times 10^{-9} \text{ m.} \quad (40)$$

The columns of \mathbf{B}_{real} above are the sampling steps of the reconstructed scatterer corresponding to the pixels in the numerical reconstruction obtained from conventional phase retrieval. We further note that the real-space image thus rendered depicts the scatterer as it was oriented in the Bragg condition while in the diffractometer. Fig. 3 finally shows the effect of the shear correction on the rendered image of the scatterer. A naïve isosurface rendering from the numerical array obtained from phase retrieval (top row) shows obvious distortions along different views of the nanocrystal image and the clear absence of top and bottom surfaces of the tapered pillar, as compared to the shear-corrected object (bottom row). Fig. 4 shows the shear-corrected view of the SiC nanoparticle, reoriented to match a SEM image of the batch of SiC pillars prior to their release from the substrate. The essential morphological features in the SEM image are seen to be reproduced faithfully with the appropriate shear correction. In particular, the flat base of the pillar is clearly visible in the images in the bottom row.

5. Summary

In Part I of this work we have described in general terms the scattering geometry of a BCDI experiment and its distortion effects on the imaged morphology of a crystalline scatterer obtained from phase retrieval. This real-space distortion is demonstrated as an unavoidable effect of the non-orthogonal sampling of Fourier space using a conventional pixelated area detector and sample rocking arrangements. We have provided a flexible numerical method to correct this image distortion, which can be easily implemented using standard linear algebra software packages and adapted to a variety of geometric

configurations possible in BCDI. We have done this by examining the representations of real- and Fourier-space points and their fundamental conjugate relation through the Fourier transform.

We have also demonstrated the validity of this shear correction with a BCDI reconstruction of a carefully fabricated silicon carbide nanoparticle, corroborated with SEM images. This work serves as a theoretical basis for the analysis of BCDI diffraction geometry, as well as a general guideline for developing software tools for three-dimensional reconstruction.

The distortion correction formalism laid out in Part I unifies various customized prescriptions currently found in the literature and in regular use at BCDI and ptychography facilities around the world. As presented, it permits the flexible implementation of the BCDI shear-correction methodology to the experimental configurations of new BCDI beamlines, anticipating the wider adoption of BCDI at upcoming fourth-generation synchrotron light sources. The formalism presented is the basic foundation of the methods developed in Part II, for direct reconstruction of the scatterer image on an orthogonal grid within the phase-retrieval process. This latter capability is demonstrated for the cases of even as well as uneven signal sampling in Fourier space, greatly increasing the scope of applicability of 3D phase retrieval. An entirely new class of BCDI experiments potentially stand to benefit from this enhanced reconstruction capability, for instance measurements on dynamically varying samples or BCDI in the presence of unstable or vibrating components (Calvo-Almazán *et al.*, 2019). As we shall see in Part II, such reconstructions can be achieved with minimal computational overhead through the modified 3D Fourier transform.

APPENDIX A Fundamental theory

A three-dimensional real-space vector \mathbf{v} denoting position is represented in a given ‘reference’ orthonormal frame as a

linear combination of an ordered set of basis vectors $[\hat{\mathbf{s}}_1 \ \hat{\mathbf{s}}_2 \ \hat{\mathbf{s}}_3]$ of unit norm:

$$\mathbf{v} := \sum_{n=1}^3 r_n \hat{\mathbf{s}}_n. \quad (41)$$

In this convention, the coefficients $r_n \in \mathbb{R}$ carry dimensions of length, while $\{\hat{\mathbf{s}}_n\}_{n=1}^3$ merely denote a set of three orthogonal directions with unit norms. If the components of each basis vector $\hat{\mathbf{s}}_n$ (expressed in the same frame) are concatenated as the columns of a 3×3 matrix \mathbf{L} , then equation (41) can be written compactly as

$$\mathbf{v} := \mathbf{L}\mathbf{r}, \quad (42)$$

where $\mathbf{r} \equiv [r_1 \ r_2 \ r_3]^T$. The same vector \mathbf{v} can be expressed in terms of another basis $\tilde{\mathbf{L}}$ of non-coplanar unit vectors $[\tilde{\mathbf{s}}_1 \ \tilde{\mathbf{s}}_2 \ \tilde{\mathbf{s}}_3]$ with a different set of coefficients $\tilde{\mathbf{r}} = [\tilde{r}_1 \ \tilde{r}_2 \ \tilde{r}_3]^T$:

$$\mathbf{v} = \tilde{\mathbf{L}}\tilde{\mathbf{r}}. \quad (43)$$

From equations (42) and (43), the prescription for transformation between two representations of the vector \mathbf{v} can be derived:

$$\mathbf{r} = \mathbf{B}_r \tilde{\mathbf{r}}. \quad (44)$$

where $\mathbf{B}_r \equiv \mathbf{L}^{-1}\tilde{\mathbf{L}}$ denotes the linear transformation operator from the ‘tilded’ to the ‘untilded’ basis. We now consider a scalar field in real space, which is represented by two distinct but equivalent scalar functions $\psi: \mathbb{R}^3 \rightarrow \mathbb{C}$ and $\tilde{\psi}: \mathbb{R}^3 \rightarrow \mathbb{C}$ such that

$$\psi(\mathbf{r}) = \tilde{\psi}(\tilde{\mathbf{r}}). \quad (45)$$

Let the Fourier transforms of the functions $\psi(\mathbf{r})$ and $\tilde{\psi}(\tilde{\mathbf{r}})$, respectively, be $\Psi(\mathbf{q})$ and $\tilde{\Psi}(\tilde{\mathbf{q}})$. $\tilde{\Psi}$ is the distorted representation of the scattered 3D wavefield whose intensity distribution is probed during the BCDI measurement, whereas Ψ is the undistorted representation of the field in its orthogonal frame. Here, (\mathbf{r}, \mathbf{q}) and $(\tilde{\mathbf{r}}, \tilde{\mathbf{q}})$ are conjugate pairs of vector coordinates as defined by the Fourier transform. Then for $\Psi(\mathbf{q})$ and $\tilde{\Psi}(\tilde{\mathbf{q}})$ to represent the same physical scalar field in Fourier space, the quantities \mathbf{q} and $\tilde{\mathbf{q}}$ should satisfy the following conditions:

- (1) They should be two distinct three-component representations of the same physical Fourier-space point.
- (2) They should be related by a linear transformation akin to equation (44):

$$\mathbf{q} \equiv \mathbf{B}_q \tilde{\mathbf{q}}. \quad (46)$$

As with real space, we adopt the convention that the elements of the column matrix representation \mathbf{q} carry physical units of inverse length and the columns of \mathbf{B}_q are dimensionless directions in Fourier space. The linear operator \mathbf{B}_q is determined in terms of \mathbf{B}_r in the following manner:

$$\begin{aligned} \tilde{\Psi}(\tilde{\mathbf{q}}) &:= \int_{\mathbb{R}^3} \tilde{\psi}(\tilde{\mathbf{r}}) \exp(-i2\pi\tilde{\mathbf{r}}^T \tilde{\mathbf{q}}) d\tilde{\mathbf{r}} \\ &= \int_{\mathbb{R}^3} \tilde{\psi}(\tilde{\mathbf{r}}) \exp[-i2\pi(\mathbf{B}_r \tilde{\mathbf{r}})^T \mathbf{B}_r^{-T} \tilde{\mathbf{q}}] d\tilde{\mathbf{r}}. \end{aligned} \quad (47)$$

By changing the integration variable from $\tilde{\mathbf{r}}$ to \mathbf{r} according to equation (44) we obtain

$$\begin{aligned} \tilde{\Psi}(\tilde{\mathbf{q}}) &= \frac{1}{\det(\mathbf{B}_r)} \int_{\mathbb{R}^3} \tilde{\psi}(\mathbf{B}_r^{-1}\mathbf{r}) \exp(-i2\pi\mathbf{r}^T \mathbf{B}_r^{-T} \tilde{\mathbf{q}}) d\mathbf{r} \\ &= \frac{1}{\det(\mathbf{B}_r)} \int_{\mathbb{R}^3} \psi(\mathbf{r}) \exp(-i2\pi\mathbf{r}^T \mathbf{B}_r^{-T} \tilde{\mathbf{q}}) d\mathbf{r} \\ &= \frac{1}{\det(\mathbf{B}_r)} \Psi(\mathbf{B}_r^{-T} \tilde{\mathbf{q}}), \end{aligned} \quad (48)$$

where the relation $\tilde{\psi}(\mathbf{B}_r^{-1}\mathbf{r}) = \psi(\mathbf{r})$ [derived from equations (44) and (45)] was used in the second equality. A direct consequence of equation (48) is that \mathbf{q} and $\mathbf{B}_r^{-T} \tilde{\mathbf{q}}$ are actually the same physical point in the Fourier space: as a result, we have $\mathbf{q} = \mathbf{B}_r^{-T} \tilde{\mathbf{q}}$, from which we deduce with equation (46)

$$\mathbf{B}_q = \mathbf{B}_r^{-T}. \quad (49)$$

By definition, representations of mutually conjugate spaces in a Fourier sense obey equation (49). This relation was first alluded to in the PhD thesis of Anastasios Pateras (2015). It tells us that if the pair of variables $(\tilde{\mathbf{r}}, \tilde{\mathbf{q}})$ are Fourier conjugate to each other then so are $(\mathbf{B}_r \tilde{\mathbf{r}}, \mathbf{B}_r^{-T} \tilde{\mathbf{q}})$ or equivalently $(\mathbf{B}_q^{-T} \tilde{\mathbf{r}}, \mathbf{B}_q \tilde{\mathbf{q}})$. Furthermore, if \mathbf{B}_r represents an orthonormal frame, \mathbf{B}_r is an orthogonal matrix (*i.e.* $\mathbf{B}_r^{-1} = \mathbf{B}_r^T$) and equation (49) reads $\mathbf{B}_r = \mathbf{B}_q$, *i.e.* orthonormal bases defined in this manner are self-conjugate.

APPENDIX B

Computing strain components on a sheared grid

The components of the rank-2 strain tensor \mathcal{E} , when expressed in a convenient orthonormal frame, are typically indexed by two integers: ϵ_{ij} . Here the indices range over the number of dimensions ($i, j = 1, 2, 3$). In BCDI, the component of the lattice strain field along the relevant reciprocal lattice vector \mathbf{q}_0 [see Fig. 1(a)] at a point \mathbf{r} in the crystal is given by

$$\epsilon_{\mathbf{q}_0}(\mathbf{r}) = \hat{\mathbf{q}}_0^T \mathcal{E}(\mathbf{r}) \hat{\mathbf{q}}_0, \quad (50)$$

where we have denoted $\hat{\mathbf{q}}_0 \equiv [\hat{q}_{0,1} \ \hat{q}_{0,2} \ \hat{q}_{0,3}]^T$ as the unit-norm vector in the direction of \mathbf{q}_0 (*i.e.* $\mathbf{q}_0 = \|\mathbf{q}_0\| \hat{\mathbf{q}}_0$). If $\mathbf{u}(\mathbf{r})$ is the lattice distortion at the point \mathbf{r} , then equation (50) can also be written as

$$\epsilon_{\mathbf{q}_0}(\mathbf{r}) = \hat{\mathbf{q}}_0^T \nabla [\hat{\mathbf{q}}_0^T \mathbf{u}(\mathbf{r})] \quad (51)$$

$$= \left(\frac{1}{2\pi\|\mathbf{q}_0\|} \right) \hat{\mathbf{q}}_0^T \nabla \phi(\mathbf{r}), \quad (52)$$

where ∇ is the gradient with respect to \mathbf{r} and $\phi(\mathbf{r}) \equiv 2\pi\mathbf{q}_0^T \mathbf{u}(\mathbf{r})$ is recognized as the complex phase field measured in a BCDI experiment.

We now wish to compute $\nabla \phi(\mathbf{r})$ at each grid point $\mathbf{r} = \mathbf{B}_{\text{real}} \mathbf{m}$, for use in equation (52). To do this, we first compute the projections of $\nabla \phi$ along the three independent sampling directions given by the columns of \mathbf{B}_{real} . If these directions are denoted by $\hat{\mathbf{e}}'_i$ where $i = 1, 2, 3$, and we define the integer array $\mathbf{m} \in \mathbb{Z}^3$ as before, then these projections may

be approximated by the finite differences of the discrete phase field, evaluated at $\mathbf{B}_{\text{real}}\mathbf{m}$:

$$(\hat{\mathbf{e}}'_1)^T \nabla \phi_{\mathbf{m}} = 2\pi \left(\frac{\phi_{\mathbf{m}+[100]^T} - \phi_{\mathbf{m}}}{\delta x_1} \right) + \mathcal{O}(\delta x_1), \quad (53)$$

$$(\hat{\mathbf{e}}'_2)^T \nabla \phi_{\mathbf{m}} = 2\pi \left(\frac{\phi_{\mathbf{m}+[010]^T} - \phi_{\mathbf{m}}}{\delta x_2} \right) + \mathcal{O}(\delta x_2), \quad (54)$$

$$(\hat{\mathbf{e}}'_3)^T \nabla \phi_{\mathbf{m}} = 2\pi \left(\frac{\phi_{\mathbf{m}+[001]^T} - \phi_{\mathbf{m}}}{\delta x_3} \right) + \mathcal{O}(\delta x_3), \quad (55)$$

where δx_i are the norms of the columns of \mathbf{B}_{real} and $\phi_{\mathbf{m}}$ is shorthand for $\phi(\mathbf{B}_{\text{real}}\mathbf{m})$. If we define $\mathbf{B}_r \equiv [\hat{\mathbf{e}}'_1 \hat{\mathbf{e}}'_2 \hat{\mathbf{e}}'_3]$ and the right-hand sides of equation (53), (54) and (55) are concatenated to form a column vector ξ then we have $\mathbf{B}_r^T \nabla \phi(\mathbf{r}) = \xi$, and therefore equation (52) becomes

$$\epsilon_{\mathbf{q}_0}(\mathbf{r}) = \left(\frac{1}{2\pi \|\mathbf{q}_0\|} \right) \hat{\mathbf{q}}_0^T \mathbf{B}_r^{-T} \xi = \left(\frac{1}{2\pi \|\mathbf{q}_0\|} \right) (\mathbf{B}_r^{-1} \hat{\mathbf{q}}_0)^T \xi. \quad (56)$$

Here ξ can be computed with relative ease owing to the availability of numerous software tools for finite differencing. Equation (56) is a prescription to directly compute the strain component at each point $\mathbf{B}_{\text{real}}\mathbf{m}$ of the discrete non-rectilinear grid spanned by \mathbf{B}_{real} without having to interpolate the complex phase field on to a rectilinear grid in advance.

Funding information

The theoretical framework pertaining to the duality of continuous real and Fourier space was developed with support from the European Research Council (European Union's Horizon H2020 research and innovation program grant agreement No. 724881). Adaptation of this theory to discrete sampling and BCDI geometry and the accompanying X-ray measurements were supported by the US Department of Energy (DOE), Office of Science, Basic Energy Sciences, Materials Science and Engineering Division. Sample preparation and SEM characterization made use of the Pritzker Nanofabrication Facility of the Institute for Molecular Engineering at the University of Chicago, which receives support from Soft and Hybrid Nanotechnology Experimental (SHyNE) Resource (NSF ECCS-1542205), a node of the National Science Foundation's National Nanotechnology Coordinated Infrastructure. This research uses the resources of the Advanced Photon Source, a US DOE Office of Science User Facility operated for the DOE Office of Science by Argonne National Laboratory under contract No. DE-AC02-06CH11357.

References

Berenguer, F., Godard, P., Allain, M., Belloc, J.-M., Talneau, A., Ravy, S. & Chamard, V. (2013). *Phys. Rev. B*, **88**, 144101.

- Calvo-Almazán, I., Allain, M., Maddali, S., Chamard, V. & Hruszkewycz, S. O. (2019). *Sci. Rep.* **9**, 6386.
- Cha, W., Ulvestad, A., Allain, M., Chamard, V., Harder, R., Leake, S. J., Maser, J., Fuoss, P. H. & Hruszkewycz, S. O. (2016). *Phys. Rev. Lett.* **117**, 225501.
- Cherukara, M. J., Pokharel, R., O'Leary, T. S., Baldwin, J. K., Maxey, E., Cha, W., Maser, J., Harder, R. J., Fensin, S. J. & Sandberg, R. L. (2018). *Nat. Commun.* **9**, 3776.
- Dupraz, M., Beutier, G., Rodney, D., Mordehai, D. & Verdier, M. (2015). *J. Appl. Cryst.* **48**, 621–644.
- Fienup, J. R. (1982). *Appl. Opt.* **21**, 2758–2769.
- Fienup, J. R. (1987). *J. Opt. Soc. Am. A*, **4**, 118–123.
- Goodman, J. (2005). *Introduction to Fourier Optics*, McGraw-Hill Physical and Quantum Electronics Series. W. H. Freeman.
- Highland, M. J., Hruszkewycz, S. O., Fong, D. D., Thompson, C., Fuoss, P. H., Calvo-Almazán, I., Maddali, S., Ulvestad, A., Nazaretski, E., Huang, X., Yan, H., Chu, Y. S., Zhou, H., Baldo, P. M. & Eastman, J. A. (2017). *Appl. Phys. Lett.* **111**, 161602.
- Hofmann, F., Phillips, N. W., Harder, R. J., Liu, W., Clark, J. N., Robinson, I. K. & Abbey, B. (2017). *J. Synchrotron Rad.* **24**, 1048–1055.
- Hofmann, F., Tarleton, E., Harder, R. J., Phillips, N. W., Ma, P.-W., Clark, J. N., Robinson, I. K., Abbey, B., Liu, W. & Beck, C. E. (2017). *Sci. Rep.* **7**, 45993.
- Hruszkewycz, S. O., Allain, M., Holt, M. V., Murray, C. E., Holt, J. R., Fuoss, P. H. & Chamard, V. (2017). *Nat. Mater.* **16**, 244–251.
- Hruszkewycz, S. O., Cha, W., Andrich, P., Anderson, C. P., Ulvestad, A., Harder, R., Fuoss, P. H., Awschalom, D. D. & Heremans, F. J. (2017). *APL Mat.* **5**, 026105.
- Hruszkewycz, S., Holt, M., Murray, C., Bruley, J., Holt, J., Tripathi, A., Shpyrko, O., McNulty, I., Highland, M. & Fuoss, P. (2012). *Nano Lett.* **12**, 5148–5154.
- Kriegner, D., Wintersberger, E. & Stangl, J. (2013). *J. Appl. Cryst.* **46**, 1162–1170.
- Marchesini, S. (2007). *Rev. Sci. Instrum.* **78**, 011301.
- Marchesini, S., He, H., Chapman, H. N., Hau-Riege, S. P., Noy, A., Howells, M. R., Weierstall, U. & Spence, J. C. H. (2003). *Phys. Rev. B*, **68**, 140101.
- Miao, J., Ishikawa, T., Robinson, I. K. & Murnane, M. M. (2015). *Science*, **348**, 530–535.
- Newton, M. C., Leake, S. J., Harder, R. & Robinson, I. K. (2010). *Nat. Mater.* **9**, 120–124.
- Pateras, A. (2015). PhD thesis, Aix Marseille University, France.
- Pateras, A. I., Allain, M., Godard, P., Largeau, L., Patriarche, G., Talneau, A., Pantzas, K., Burghammer, M., Minkevich, A. A. & Chamard, V. (2015). *Phys. Rev. B*, **92**, 205305.
- Pfeifer, M. (2005). PhD thesis, University of Illinois at Urbana-Champaign, USA.
- Robinson, I. & Harder, R. (2009). *Nat. Mater.* **8**, 291–298.
- Robinson, I. K., Vartanyants, I. A., Williams, G. J., Pfeifer, M. A. & Pitney, J. A. (2001). *Phys. Rev. Lett.* **87**, 195505.
- Rodrigues, O. (1840). *J. Math. Pures Appl. Ire Sér.* **5**, 380–440.
- Shmueli, U. (2001). *Reciprocal Space in Crystallography*, pp. 2–9. Dordrecht: Springer Netherlands.
- Ulvestad, A., Singer, A., Clark, J., Cho, J., Kim, J. W., Harder, R., Maser, J., Meng, S. & Shpyrko, O. (2015). *Science*, **348**, 1344–1347.
- Ulvestad, A., Welland, M. J., Collins, S. S. E., Harder, R., Maxey, E., Wingert, J., Singer, A., Hy, S., Mulvaney, P., Zapol, P. & Shpyrko, O. G. (2015). *Nat. Commun.* **6**, 10092.
- Vartanyants, I. & Robinson, I. (2001). *J. Phys. Condens. Matter*, **13**, 10593–10611.
- Yang, D., Phillips, N. W. & Hofmann, F. (2019). *J. Synchrotron Rad.* **26**, 2055–2063.