



HAL
open science

On-line collision avoidance for collaborative robot manipulators by adjusting off-line generated paths: An industrial use case

Mohammad Safeea, Pedro Neto, Richard Bearee

► To cite this version:

Mohammad Safeea, Pedro Neto, Richard Bearee. On-line collision avoidance for collaborative robot manipulators by adjusting off-line generated paths: An industrial use case. *Robotics and Autonomous Systems*, 2019, 119, pp.278-288. hal-02362167

HAL Id: hal-02362167

<https://hal.science/hal-02362167v1>

Submitted on 13 Nov 2019

HAL is a multi-disciplinary open access archive for the deposit and dissemination of scientific research documents, whether they are published or not. The documents may come from teaching and research institutions in France or abroad, or from public or private research centers.

L'archive ouverte pluridisciplinaire **HAL**, est destinée au dépôt et à la diffusion de documents scientifiques de niveau recherche, publiés ou non, émanant des établissements d'enseignement et de recherche français ou étrangers, des laboratoires publics ou privés.

On-line collision avoidance for collaborative robot manipulators by adjusting off-line generated paths: an industrial use case

Mohammad Safeea^{a,b}, Pedro Neto^a, Richard Bearee^b

^a *University of Coimbra, Department of Mechanical Engineering, 3030-788 Coimbra, Portugal*

^b *Arts et Métiers, LISPEN, 59800 Lille, France*

Abstract

Human-robot collision avoidance is a key in collaborative robotics and in the framework of Industry 4.0. It plays an important role for achieving safety criteria while having humans and machines working side-by-side in unstructured and time-varying environment. This study introduces the subject of manipulator's on-line collision avoidance into a real industrial application implementing typical sensors and a commonly used collaborative industrial manipulator, KUKA iiwa. In the proposed methodology, the human co-worker and the robot are represented by geometric primitives (capsules). The minimum distance and relative velocity between them is calculated, when human/obstacles are nearby the concept of hypothetical repulsion and attraction vectors is used. By coupling this concept with a mathematical representation of robot's kinematics, a task level control with collision avoidance capability is achieved. Consequently, the off-line generated nominal path of the industrial task is modified on-the-fly so the robot is able to avoid collision with the co-worker safely while being able to fulfill the industrial operation. To guarantee motion continuity when switching between different tasks, the notion of repulsion-vector-reshaping is introduced. Tests on an assembly robotic cell in automotive industry show that the robot moves smoothly and avoids collisions successfully by adjusting the off-line generated nominal paths.

Keywords: collision avoidance, collaborative robotics, industry, assembly.

1. Introduction

Industrial robots are traditionally working inside fences, isolated from humans. The ability to have robots sharing the workspace and working side-by-side

Email address: `ms@uc.pt`, `pedro.neto@dem.uc.pt`, `Richard.BEAREE@ensam.eu`
(Mohammad Safeea^{a,b}, Pedro Neto^a, Richard Bearee^b)

with human co-workers is a key factor for the materialization of the Industry 4.0 concept. The paradigm for robot usage has changed in the last few years, from an idea in which robots work with complete autonomy to a scenario where robots cognitively collaborate with human beings. This brings together the best of each partner, robot and human, by combining coordination, dexterity and cognitive capabilities of humans with the robots' accuracy, agility and ability to produce repetitive work. For example, robots can help humans in carrying and manipulating sensitive/heavy objects safely [1] and positioning them precisely by hand-guiding [2]. In this scenario the robot can play the role of a force magnifier while moving compliantly according to the haptic feedback from the human.

Reaching the goal of developing/creating safe collaborative robots will allow a greater presence of robots in our society, with a positive impact in several domains, including industry [3]. Nowadays, industrial collaborative robots, which are not operating inside fences, do not have autonomy to perceive its unstructured and time-varying surrounding environment, nor the ability to avoid collisions with human co-workers in real-time while keeping the task target defined by the off-line generated paths. On the contrary, they stop when a predefined minimum separation distance is reached. Due to this issue, the full potentialities of collaborative robots in industrial environment are not totally explored. The increasing demand by industry for collaborative robot-based solutions makes the need for advanced collision avoidance strategies more visible. To have them working safely alongside with humans, robots need to be provided with biological-like reflexes, allowing them to circumvent obstacles and avoid collisions. This is extremely important in order to give robots more autonomy and minimum need for human intervention, especially when robots are operating in dynamic environment and interacting/collaborating with human co-workers [4]. The requirements for safe collaborative robots, including physical human-robot interaction (HRI), are detailed in [5], where collision avoidance is listed as a factor, among others, which is important for human-robot safety. The new standard ISO 10218 and the technical specification TS 15066 define the safety requirements for collaborative robots [6]. Apart from industrial domain and human-robot collaboration, collision avoidance is also being investigated for aerospace applications, including robotic arms mounted on space maneuverable platforms [7] and aerial manipulators mounted on drones [8].

For a proper implementation of collision avoidance in Human-Robot Interaction (HRI) scenario, the motion of the human co-worker shall be predicted, and his/her configuration shall be captured. For this purpose, researches have utilized various methods and sensors. In [9], the authors presented a method for human pose estimation (in a plane) based on laser range measurements, the method was applied successfully in HRI scenario between a human and a mobile robot. The intelligent space (iSpace) project was introduced in [10], iSpace implements a distributed network of sensors for tracking the motion of humans, the iSpace provides a platform for guiding mobile robots in human cantered environment. In [11] the authors used the depth data from a Kinect camera for calculating distances between the human and reference points on the robot.

In [12] the authors presented a new method, by using a camera mounted on the EEF (eye-in-hand) or the worker's head, a coordinated motion between a robot and a human was achieved, for future work the authors plan to extend the method for achieving human-robot collision avoidance.

After capturing the motion of the human(s)/obstacle(s), the collision avoidance shall be developed. In the robotics literature various studies has been proposed. In the pioneering work of Khatib [13], a real-time obstacle avoidance approach based on the classical artificial potential field (PF) concept is introduced. In PF-based methods, the robot is in a hypothetical vector field, and its motion is influenced by forces of attraction that guide the robot towards the goal and forces of repulsion that repel it away from obstacles. Subjected to these forces the robot finds its way to the goal while avoiding collisions. Recently, a depth space approach for collision avoidance proposes an improved implementation of the PF method in which an estimation of obstacle's velocity was taken into consideration when computing the repulsion vector [14]. PF-based robot self-collision avoidance has been studied, as well as the development of collision avoidance techniques for redundant robots [15]. A distributed real-time approach to collision avoidance considering not only the robot tool centre point over the objects in the cell, but also the body of the tool mounted on the robot flange is in [16]. A passivity-based control scheme for human-robot safe cooperation is proposed in [17]. A collision free trajectory generating method for a robot operating in a shared workspace in which a neural network is applied to create the way points required for dynamic obstacles avoidance is proposed in [18]. In [19], the authors presented a method for calculating collision free optimal trajectories for robotic manipulators with static obstacles. The proposed algorithm takes into consideration the maximum limits of jerk, torques, and power for each actuator. Tests have been carried out in simulation in a PUMA 560 robot. In [20], it is presented a collision avoidance algorithm between robotic manipulators and mobile obstacles validated in simulation environment. Using the variation principal, it is proposed a path planner for serial manipulators with high degrees of freedom operating in constrained work spaces where the planner produces monotonically optimal collision free paths [21]. Based on fuzzy rules [22], the authors presented a method for resolving internal joint angles in redundant manipulators. The method allows the EEF to follow the desired path, while the internal motion manifold is used to perform other objectives including collision avoidance with surrounding obstacles.

While artificial PF is inspired by electric field phenomena, other approaches, inspired by electromagnetism (circular fields) were investigated [23, 24]. Other researchers have approached robot collision avoidance using optimization techniques [25], by formulating the problem as a graph search using Probabilistic Roadmaps (PRM) [26], and considering dynamic changing environment [27].

However, the number of existing studies dedicated to on-line human-robot collision avoidance for manipulators in industrial setups is very limited, and when existing, results are presented in simulation environment. Some of these studies, especially the ones with more direct industrial application, approach collision avoidance by stopping the robot or reducing its velocity when a human

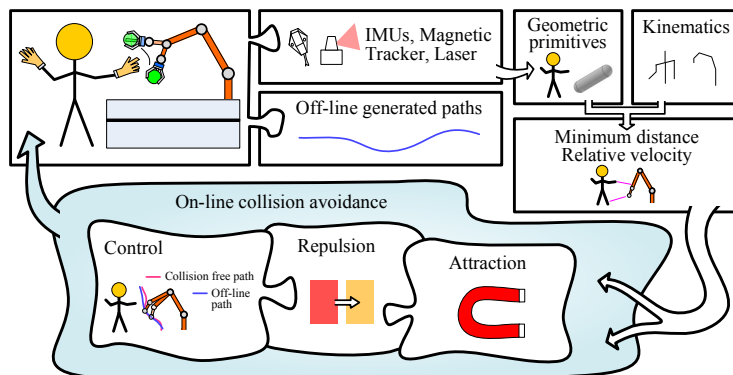


Figure 1: Proposed framework for on-line human-robot collision avoidance.

reaches a given distance threshold [28]. An interesting work defines four safety strategies for workspace monitoring and collision detection: the system alerts the operator, stops the robot, moves the robot away, or modifies the robot’s trajectory from an approaching operator [29].

In our study, an industrial task is defined by the off-line generated robot paths (task primitives), which can be programmed by a Computer-Aided Design (CAD) software, or by using more sophisticated methods including Programming by Demonstration (PbD) [30]. Consequently, a safe human robot interaction is achieved through real-time modification of the off-line generated paths, Fig. 1. In this scenario of shared workspace, the human co-worker focuses on the collaborative task he/she is performing rather than the potential danger from the robot. Using external sensors (IMUs, a magnetic tracker and a laser scanner) the pose of the human body is captured and approximated by hemisphere-capped cylinders designated in this paper by capsules. The robot is represented by three capsules. The analytical minimum distance between capsules representing the robot and the human(s) is calculated using the method in [31]. The human-robot minimum distance and relative velocity are used as inputs for the proposed collision avoidance controller, where hypothetical attraction and repulsion vectors attract the robot towards the goal/target while repelling it away from obstacles. We also introduce the notion of repulsion-vector-reshaping to avoid control discontinuity. By coupling these concepts with a mathematical representation of robot’s kinematics we can achieve a task level control with smooth collision avoidance capability. The proposed framework is tested in three different configurations, including a real use case for assembly in automotive industry using real sensors and a collaborative industrial manipulator. Results indicate that the robot reacts smoothly by modifying its off-line generated paths to avoid collision with the human co-worker. Consequently, our study is the first of its kind (according to our knowledge) that satisfies all the following points combined:

1. In our study a real industrial robot (not experimental) is used for per-

forming a typical industrial task;

2. The proposed method for performing the collision avoidance is tailored for industrial use, by combining an off-line path of the EEF (important for industrial applications) with an on-line reactive collision avoidance (required for dynamic collision avoidance);
3. In our method a human co-worker is moving freely around the robot, the whole configuration of his upper body is captured using real sensors. While, most other studies utilize simulation. The few that approached human-robot collision avoidance utilized an experimental robot, and mostly vision systems which suffer from occlusion, in addition other studies focused on the collision avoidance itself, without showing results in a real industrial operation;
4. Unlike other studies, we realized that in a real industrial scenario, the control shall switch between different operation modes (as shown later in Fig. 9 and Algorithm Collision avoidance – automotive sample case), this can lead to repulsion action discontinuity, we resolved this issue by proposing the repulsion-vector-reshaping (described in Algorithm Modified repulsion vector).

2. Challenges and problem Specification

Two major problems in on-line human-robot collision avoidance can be identified. The first is related with the reliable acquisition of the human pose in unstructured environments. The second is due to the difficulty in achieving smooth continuous robot motion while generating collision avoidance paths. For capturing the configuration of the human the method in [32] is implemented. On the other hand, our study presents solutions concerning the difficulty in achieving collision free and smooth continuous robot motion, which is particularly visible in an industrial setup where the control algorithm switches between different controllers depending on the task-in-hand. In summary, several challenges can be pointed out:

1. Accurate definition of humans/obstacles and robot pose in space using geometric primitives, and calculation of the minimum distance between them;
2. Achieving reliable autonomous human-robot collision avoidance in which the robot adapts the off-line generated nominal paths while keeping the task goal/target. In such a case, instead of stopping or reducing robot's velocity when humans are nearby, the robot has to continue its motion while avoiding the humans/obstacles;
3. The control strategy shall produce continuous motion of robot's reaction when it adjusts the path to avoid collision. This continuity shall be guaranteed even when switching between different controllers;
4. Industrial applications require high-performance control in terms of motion accuracy and agility;

5. Collision free robot motion should be possible and reliable in the entire working volume of the robot.

Experiments demonstrated the ability of the proposed solution to achieve on-line human-robot collision avoidance materialized in the following contributions:

1. Reliable and smooth human-robot collision avoidance in which the robot adapts the off-line generated nominal paths (defined in the initial robot program) while keeping the task target. The robot finds a way to get around the human(s)/obstacles when they are nearby. Human-robot minimum distance and relative velocity are used as inputs to the implemented collision avoidance algorithm;
2. Successfully applying on-line collision avoidance on a real industrial collaborative robot performing industrial assembly tasks in collaboration with a human co-worker.

3. Collision Avoidance Strategy

Hypothetical attraction and repulsion vectors attract the robot towards the goal/target (defined by the off-line generated nominal paths) while repelling it away from human(s)/obstacles. By coupling this concept with a mathematical representation of robot's kinematics we can achieve a task level control with collision avoidance capability.

3.1. Repulsion

A vector $\mathbf{v}_{cp.rep}$ acts on the point of the robot closest to the obstacle (CP) repelling it away from collision. This vector is defined considering a magnitude $v_{rep.mod}$ (calculated from a base repulsion amplitude v_{rep}) and a direction \mathbf{s} :

$$\mathbf{v}_{cp.rep} = v_{rep.mod}\mathbf{s} \quad (1)$$

The direction of the repulsion vector \mathbf{s} is taken to be aligned with the line segment associated with the minimum distance:

$$\mathbf{s} = \frac{\mathbf{r}_1 - \mathbf{r}_2}{|\mathbf{r}_1 - \mathbf{r}_2|} \quad (2)$$

Where \mathbf{r}_1 is the position vector of the point of the robot closest to the obstacle and \mathbf{r}_2 is the position vector of the point of the obstacle closest to the robot. For calculating the base repulsion amplitude v_{rep} we propose to superimpose the repulsion due to the minimum distance (v_{rep1}) and the repulsion due to the relative velocity between human and robot (v_{rep2}), so that $v_{rep} = v_{rep1} + v_{rep2}$. Here, v_{rep1} is calculated from the minimum distance d_{min} :

$$v_{rep1} = \begin{cases} k_1 \left(\frac{d_0}{d_{min} - d_{cr}} - 1 \right), & \text{if } d_{min} - d_{cr} < d_0 \\ 0 & \text{if } d_{min} - d_{cr} \geq d_0 \end{cases} \quad (3)$$

Where k_1 is a constant, d_0 is an offset distance around the obstacle’s capsule, it specifies the area around the obstacle where the repulsion vector is activated, and d_{cr} is a critical distance below which the robot is not allowed to be near the human. To enhance the responsiveness of the robot, we propose a dynamical reshaping of the size of the area of influence around the obstacle d_0 , such that the value of d_0 increases when the relative velocity between the robot and the obstacle increases:

$$d_0 = \begin{cases} d_1 - c_v v_{rel} & v_{rel} < 0 \\ d_1 & v_{rel} \geq 0 \end{cases} \quad (4)$$

Where v_{rel} is the human-robot relative velocity, c_v is a constant and d_1 is the minimum value of the area of influence around the obstacle. For v_{rep2} we have:

$$v_{rep2} = \begin{cases} -c k_2 v_{rel} & v_{rel} < 0 \\ 0 & v_{rel} \geq 0 \end{cases} \quad (5)$$

Where k_2 is a damping constant and c is a coefficient that takes into consideration the proximity of the obstacle from the robot:

$$c = \begin{cases} 1 & d_{min} < l_1 \\ \frac{1 + \cos(\pi \frac{d_{min} - l_1}{l_2 - l_1})}{2} & l_1 < d_{min} < l_2 \\ 0 & l_2 < d_{min} \end{cases} \quad (6)$$

Where l_1 and l_2 are constant distances that define the range around the robot where the damping force is activated. The intuition of using c is that obstacles far away from the robot shall not affect robot’s motion since that they do not pose any risk of collision.

The modified repulsion magnitude $v_{rep.mod}$ is calculated from v_{rep} according to Algorithm “Modified repulsion vector”. For complex industrial collaborative operations, the collision avoidance controller is typically embedded in a state machine, where the collision avoidance functionality is activated/deactivated according to the tasks being performed. In such a case, discontinuity could appear when calculating the repulsion action. As an example, if the controller is switched (from the collision avoidance deactivation to the collision avoidance activation) while the co-worker is near the robot, discontinuity appears. In such a case, a high magnitude of the repulsion vector will act on the robot suddenly. To solve this problem, the repulsion action is proposed to be time dependent, by introducing the concept of repulsion-vector-reshaping coefficient γ , such that when the control scheme is switched the repulsion magnitude is allowed to increase monotonically starting from zero up to its stable value. In the Algorithm, *now* is a function returning the current time, τ is a time constant that can be calculated from $v_{max}/(5a_{max})$, where v_{max} and a_{max} are the maximum curvilinear velocity and acceleration of the end-effector (EEF) used during collision avoidance, respectively.

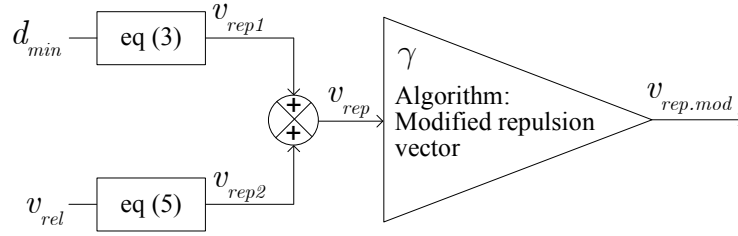


Figure 2: Block diagram showing the proposed method for calculating the magnitude of the modified repulsion vector.

Algorithm Modified repulsion vector

- 1: **for each** time step Δt **do**
 - 2: **if** controller switched **then**
 - 3: $t_0 = now$
 - 4: **end if**
 - 5: $t = now - t_0$
 - 6: $\gamma = 1 - exp(-t/\tau)$
 - 7: $v_{rep.mod} = \gamma v_{rep}$
 - 8: **end for**
-

Figure 2 shows a block diagram illustrating the proposed method for calculating the modified repulsion vector $v_{rep.mod}$ and its relationship to $v_{rep.1}$ and $v_{rep.2}$.

3.2. Attraction

An attraction velocity vector $v_{e.att}$ attached to the EEF guides the robot towards the goal/target, Fig. 3. This vector is a function of the error e between EEF's position p_e and the goal position p_g (defined in the off-line generated nominal paths):

$$e = p_e - p_g \quad (7)$$

The attraction velocity is calculated from a proportional term (ψ_p) and a quasi-integral term (ψ_i):

$$v_{e.att} = \beta(\psi_p + \psi_i) \quad (8)$$

Where ψ_p is a pure proportional term:

$$\psi_p = -\mathbf{K}_p e \quad (9)$$

In which \mathbf{K}_p is the proportional coefficient. The quasi-integral term ψ_i , Algorithm "Integral term of the attraction vector", prevents the quasi-integral from accumulating when the human-robot distance is less than a predefined safety distance d_0 . In the Algorithm, d_{min} is the human-robot minimum distance and the integral term is calculated numerically using a simple Euler scheme (more

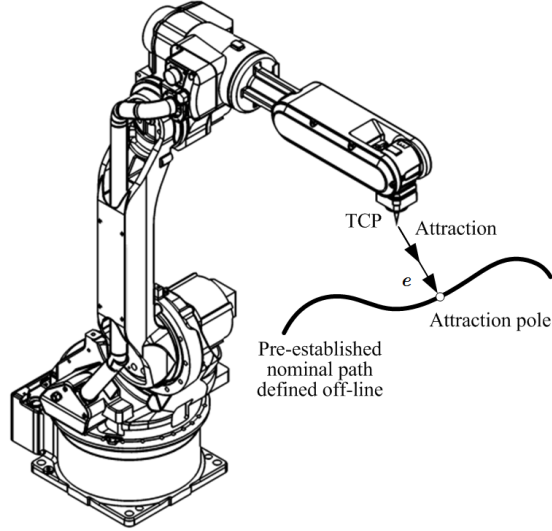


Figure 3: The nominal path curve defined off-line, the attraction pole, and the error vector.

sophisticated Runge-Kutta methods could also be used). The term β is used to reduce the magnitude of the attraction vector. This term has the effect of detaching the EEF gradually from the goal when the human co-worker is closer to the robot:

$$\beta = \left(\frac{2}{1 + e^{-\left(\frac{d_{min}-d_{cr}}{d_0}\right)^2}} - 1 \right) \quad (10)$$

Algorithm Integral term of the attraction vector

- 1: **for each** time step Δt **do**
 - 2: **if** $d_{min}-d_{cr} > d_0$ **then**
 - 3: $\psi_i = \psi_i - \mathbf{K}_i \int_t^{t+\Delta t} e dt$
 - 4: **else**
 - 5: $\psi_i = \psi_i$ ▷ to prevent windup of integral term
 - 6: **end if**
 - 7: **end for**
-

Figure 4 shows a block diagram illustrating the proposed method for calculating the attraction vector.

3.3. Controller

The robot is controlled at the joint velocity level. The repulsion and attraction vectors are considered velocity vectors in which the repulsion velocity is calculated from (1), and the attraction velocity at the EEF $v_{e.att}$ is calculated from (8). Calculating the overall angular velocities of the joints requires

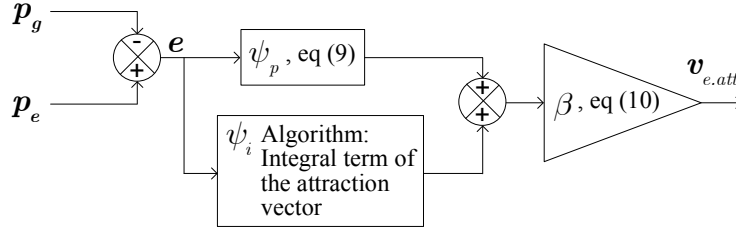


Figure 4: Block diagram showing the proposed method for calculating the attraction vector. Term ψ_i is calculated using the Algorithm Integral term of the attraction vector, which is used to avoid windup problem.

superimposing the angular velocities due to repulsion and attraction. Thus, the angular velocities due to $\mathbf{v}_{cp.rep}$ that acts at CP is calculated using the Damped Least Squares [33]:

$$\dot{\mathbf{q}}_{rep} = \mathbf{J}_{cp}^T (\mathbf{J}_{cp} \mathbf{J}_{cp}^T + \lambda^2 \mathbf{I})^{-1} \mathbf{v}_{cp.rep} \quad (11)$$

Where $\dot{\mathbf{q}}_{rep}$ is the joint velocities vector due to the repulsion action, \mathbf{J}_{cp} is the partial Jacobian associated with CP on the robot, λ is a damping constant, and \mathbf{I} is the identity matrix.

The angular velocities due to $\mathbf{v}_{e.att}$ that act at the EEF are calculated from:

$$\dot{\mathbf{q}}_{att} = \mathbf{J}_e^T (\mathbf{J}_e \mathbf{J}_e^T + \lambda^2 \mathbf{I})^{-1} \mathbf{v}_{e.att} \quad (12)$$

Where $\dot{\mathbf{q}}_{att}$ is the joint velocities vector due to the attraction action and \mathbf{J}_e is the Jacobian associated with the EEF. Thus, the total angular velocities of the joints sent to the robot:

$$\dot{\mathbf{q}}_{total} = \dot{\mathbf{q}}_{att} + \dot{\mathbf{q}}_{rep} \quad (13)$$

4. Experiments and Results

Experiments are conducted in three main configurations:

1. Configuration 1: the human arm acts as an obstacle for the robot that is performing a straight line path (off-line generated nominal path);
2. Configuration 2: the human approaches the robot from the side while the robot is stopped at a predefined home position;
3. Configuration 3: an industrial collaborative assembly operation for automotive industry in which the human co-worker approaches the robot to place a sticker in a car door card while the robot is inserting trim clips in the same door card.

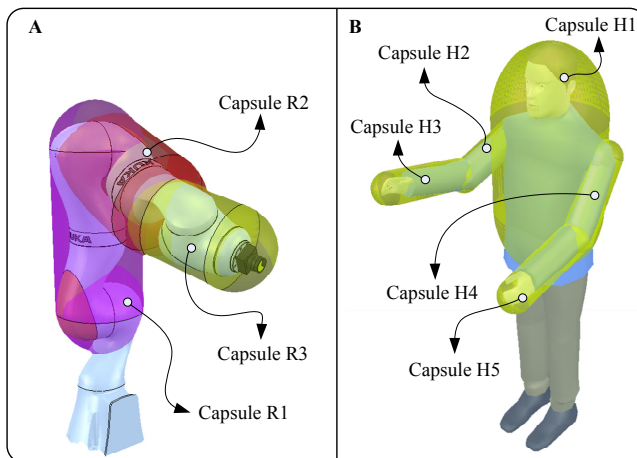


Figure 5: Robot (A) and human (B) represented by capsules.

4.1. Setup and Data Acquisition

The three experimental configurations were tested using different sensors for capturing the human pose in space. In configuration 1 and configuration 2, the proposed solution was tested with Polhemus Liberty magnetic tracking sensors attached to the human upper body (arm, forearm and chest) to acquire 6 DOF pose (position and orientation) of each body part in space. In configuration 3, the method proposed in [32] is used for capturing the human body pose from five IMUs (Technaid MCS) attached to the arms/forearms and the chest, and a laser scanner (SICK TiM5xx) at the level of the legs. An external computer Intel Core i7 with 32 GB of RAM running MATLAB[®] was used for performing the required computations: sensor data acquisition, capsules configuration calculation, minimum-distance and relative-velocity calculation, collision avoidance algorithms, and robot control using the KUKA Sunrise Toolbox (KST) [34]. In such a case, the robot is controlled at the kinematics level without considering its dynamics explicitly. The low-level control is built on the DirectServo library [35] provided by the manufacturer (Kuka Roboter), a 25Hz angular position update of the real-time system of the robot controller is used. Hence, the industrial joint servo is used for controlling the joint error dynamics, while the commanded joint position is calculated according to the manufacturer’s data in order not to exceed the maximum allowable angular velocity. The demonstration of an efficient and fast obstacle avoidance responsiveness is an objective of this study. However, the joint trajectories may be smoothed by filtering [36], to adjust the HRI acceptance and/or to improve the dynamic accuracy.

4.2. Human and Robot Representation

The human is represented by five capsules, Fig. 5, four capsules used to cover the right/left upper arm and forearm, while the fifth capsule is used to cover the

torso up to the head [32]. The robot (KUKA iiwa with 7 DOF) is represented by three capsules, Fig. 5. Capsule R3 also incorporates the tool attached to the robot. The pose of the capsules are defined by applying the forward kinematics on the joint angles acquired from the controller of the robot.

4.3. Results and Discussion

Figure 6 shows the results for configuration 1. The human forearm, represented by a capsule, is extended and acts as an obstacle. The robot is moving on a straight line path (nominal path defined off-line) along the y direction of its base frame. While moving on the straight line, the minimum distance between the human-arm and the robot decreases. Consequently, the robot adapts the nominal path smoothly circumventing the human arm. At the top of Fig. 6, the graph shows the minimum distance, the velocity of the EEF and its position in Cartesian coordinates along y axis. These quantities are reported as function of time. We can notice from the plot that at the beginning the human arm is in a resting position and the robot is moving with a constant velocity of about 0.26 m/sec, along y direction, towards the human arm. When the robot EEF approaches the human arm the minimum distance decreases to a minimum of about 5 centimeters. The EEF velocity is constant until a threshold minimum distance is reached. In such scenario the EEF velocity decreases to start circumventing the obstacle and then accelerates to reach a velocity close to the nominal velocity of 0.26 m/s. It can be concluded that the robot manages to avoid collision with the co-worker successfully and the collision avoidance controller smoothly reacts to avoid collision while reaching the task target.

In configuration 2 the human approaches the robot from the side while the robot is stopped at a pre-defined home position. As the human approaches the robot the human-robot minimum distance decreases and the robot reacts in an agile-smooth behaviour to avoid collision. At the top of Fig. 7, the same quantities presented for configuration 1 show that at the beginning the human starts walking towards the robot, when the minimum distance reaches 0.5 meters, the robot reacts to avoid collision. When the human goes away the robot returns to the initial home position. The robot successfully avoided collision as in the snapshots at the bottom of Fig. 7 and in the video in extra multimedia materials.

Flexible manufacturing, and industrial assembly processes in particular, present several challenges due to the unstructured nature of an industrial environment. Some tasks are more suited to be executed by humans, others by robots, and others by the collaborative work between human and robot. The ability to have humans and robots working side-by-side will bring enormous efficiency benefits to flexible manufacturing. However, this scenario is challenging, due to the requirement of having the robot avoiding collisions with the co-worker in real-time, allowing him/her to focus on the manufacturing tasks and not on the potential danger from the robot side. In this context, we tested the proposed system, in configuration 3, in an automotive sample case in which the human co-worker approaches the robot to place a sticker in a car door card while the robot

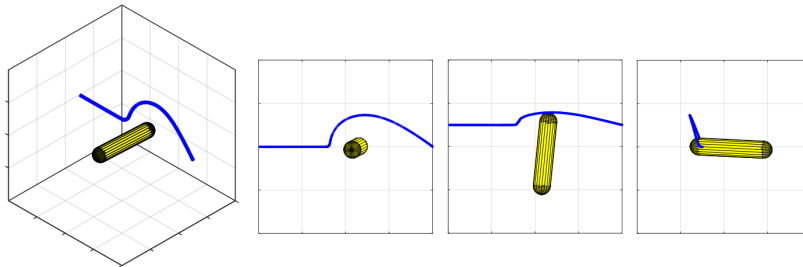
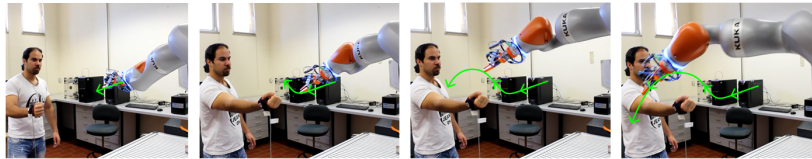
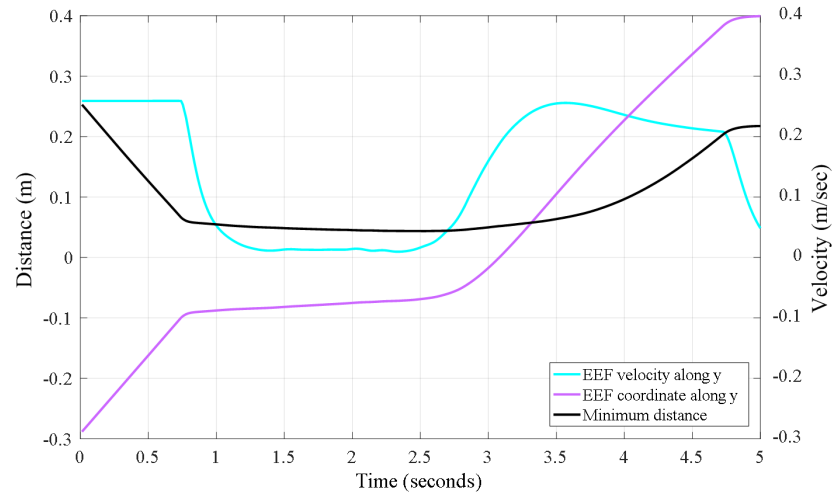


Figure 6: Configuration 1 results. Minimum distance, EEF velocity and position along y axis (top). Snapshot of collision avoidance testing and collision avoidance path in 3D and 2D space (middle and bottom).

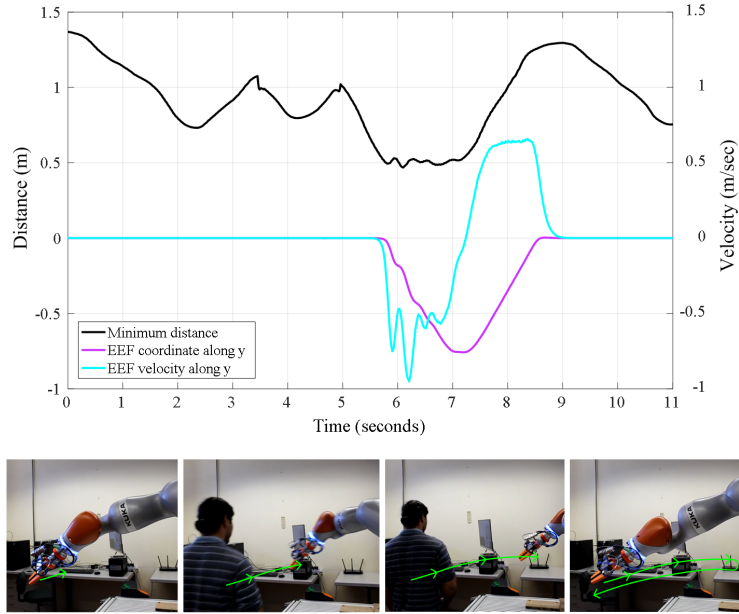


Figure 7: Configuration 2 results. Minimum distance, EEf velocity and position along y axis (top). Snapshot of collision avoidance testing (bottom).

is inserting trim clips in the same door card, Fig. 8 (video in extra multimedia materials). This flexible collaborative task allows the co-worker to manage his/her working time and sequencing of operations since he/she is free to place the sticker in the door card at any time and devotes attention to other tasks that he/she has to take care of. Meanwhile the robot continues inserting the trim clips in the door card by using its force feedback to compensate for deviations in the door card positioning. When the human co-worker approaches the robot it adapts the nominal path to avoid collisions in a smooth way while keeping its task. For this sample case, the pre-established nominal path is divided in 3 sub-path segments, Fig. 9 (A). In segment 1 and 3 (green line) the collision avoidance control is activated (collision avoidance (CA) paths) while in segment 2 (red and blue line) is deactivated. This is because this path is defined to be the working path where the robot is inserting the trim clips at relative reduced velocity. Starting from a given home position coincident with the beginning of segment 1 and the tool centre point (TCP) the system behaves as in Algorithm “collision avoidance - automotive sample case”. In Fig. 9 (B) the robot and goal point move along segment 1 so that an error vector is established. If the human is detected in the safety zone the collision avoidance is activated and the goal point stops moving, Fig. 9 (C). When the human is not in the safety zone the robot returns back to the goal point that starts moving with the robot, Fig. 9 (D). When the robot reaches segment 2 the collision avoidance is deactivated, Fig. 9 (E). Due to the use of IMUs to capture the configuration of the hu-

man, in practice, the noise in the measurements shall be filtered. In our study, we utilized the Technaid IMU system, where filters [37] are implemented on an external processing unit (inside the system’s hub). Consequently, using the manufacturer’s API (Application Programming Interface) we can acquire the orientation of each IMU from an external PC, wirelessly through a Bluetooth connection. Since that the accuracy of the IMU measurements is represented by a maximum orientation error (for example, the Technaid data sheets specify a one-degree angular error), then based on the kinematics of the human body [32], an estimate of the resulting maximum Cartesian error can be calculated. In such a case, our algorithm allows minimizing the effect of the Cartesian error (due to the inaccuracy of the IMU angular measurement) simply by increasing d_{cr} (equation 3) to include the maximum Cartesian error. In such a case, the uncertainty in the calculated minimum distance (resulting from IMU inaccuracy) will be less than the critical distance d_{cr} (the minimum distance below which the robot cannot be near the human), consequently, we can be sure that the robot does not touch the human even when a maximum measurement error is present.

Based on the tests, all the users indicate that the system does not appear to be dangerous virtue to the collision avoidance motion which is perceived as smooth and natural. It is also demonstrated that the system performs well even in situations where the human is showing a hesitation or a back-and-forth motion, this is shown during tests (in the attached video segment, from seconds 43 to 47), where the co-worker is moving his hand back and forth towards the robot while the robot is reacting to avoid collisions smoothly. However, a final determination of the effect on the co-worker’s psychology (feelings of danger, fear, security, distraction) will require a dedicated study in collaboration with psychologists, involving more users and taking into consideration various factors (including: age and background), as such it will be left open for future work.

It is hard to perform a quantitative comparison between our algorithm and others, since that various studies have utilized different hardware architectures (robots, control systems), different type of sensors, and different scenarios. However, qualitatively speaking, our study, unlike others, demonstrates the feasibility of on-line collision avoidance in HRI situation for a real industrial use case while taking into consideration various important aspects:

1. Unlike other methods, our method is tailored for industrial application, our algorithm implements off-line generated paths of the EEF (important for performing industrial operation) combined with an on-line reactive collision avoidance, to avoid collisions with the human co-worker;
2. The algorithm takes into consideration various aspects to guarantee the continuity of the motion (due to the necessity of switching between different controllers imposed by the industrial task);
3. In our tests, it is used a real industrial manipulator KUKA iiwa (certified for industrial use), and utilizing commonly-used sensors (well-established technologies);
4. A unique feature of our application is that we developed the low-level

control of our algorithm using the DirectServo library of the KUKA iiwa. In such a case, all the security features of the Sunrise.OS (operating system of the KUKA iiwa controller) are running in parallel with our developed controlling program. This includes the collision detection feature, which is activated by our control program during the free collision avoidance motion, adding an additional safety layer to the system;

5. Unlike most of the studies, we demonstrated our algorithm in the context of a real-life (not simulation) industrial scenario (assembly operation).

Algorithm Collision avoidance - automotive sample case

```

1: for each time step do
2:   if human is not detected in the safety zone then
3:     if CA path then
4:       Goal point moves along path segment
5:       Error vector generated between TCP and the goal point, Fig. 7
6:       (B)
7:       Attraction velocity generated from the error vector
8:       if goal point reaches the segment end then
9:         Goal point stops moving
10:        The robot TCP reaches the goal point
11:      end if
12:    else
13:      Collision avoidance controller is deactivated
14:      Controller to insert trim clip is activated
15:    end if
16:  else human is detected in the safety zone
17:    if CA path then
18:      Goal point stops moving
19:      Integral term stops accumulating
20:      A repulsion velocity  $v_{rep}$  acts in the robot, Fig. 7 (C)
21:    else
22:      Collision avoidance controller is deactivated
23:      Controller to insert trim clip is activated, Fig. 7 (E)
24:    end if
25:  end if
26: end for

```

5. Conclusion

This paper presented a novel method for human-robot collision avoidance for collaborative robotics tailored for industrial applications. The collision avoidance controller demonstrated on-line capabilities to avoid collisions while the robot continues working by keeping the task target. The concept of repulsion-vector-reshaping was introduced to guarantee the continuity of the generated motion when switching between controllers. Experiments indicated that the



Figure 8: Automotive sample case for car door card assembly (video in extra multimedia materials).

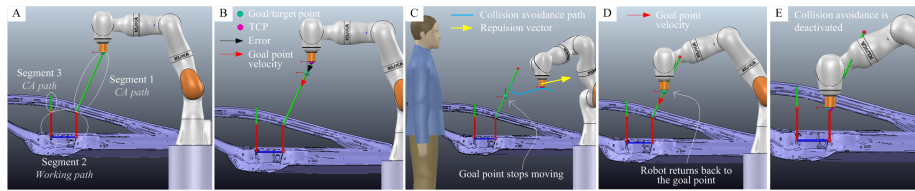


Figure 9: Pre-established sub-path segments for the automotive sample case. This process is detailed in the algorithm Collision avoidance - automotive sample case.

robot reaction to avoid collisions is well perceived by the co-worker, smooth, natural and effective.

6. Acknowledgements

This research was partially supported by Portugal 2020 project DM4Manufacturing POCI-01-0145-FEDER-016418 by UE/FEDER through the program COMPETE 2020, and the Portuguese Foundation for Science and Technology (FCT) SFRH/BD/131091/2017 and COBOTIS (PTDC/EMEEME/ 32595/2017).

7. References

References

- [1] J. E. Solanes, L. Gracia, P. Muñoz-Benavent, J. V. Miro, M. G. Carmichael, J. Tornero, Human-robot collaboration for safe object transportation using force feedback, *Robotics and Autonomous Systems* (2018).
- [2] M. Safeea, R. Bearee, P. Neto, End-effector precise hand-guiding for collaborative robots, in: *Iberian Robotics conference*, Springer, 2017, pp. 595–605.

- [3] P. Neto, M. Simão, N. Mendes, M. Safeea, Gesture-based human-robot interaction for human assistance in manufacturing, *The International Journal of Advanced Manufacturing Technology* (2018). URL: <https://doi.org/10.1007/s00170-018-2788-x>. doi:10.1007/s00170-018-2788-x.
- [4] S. Nikolaidis, P. Lasota, R. Ramakrishnan, J. Shah, Improved human-robot team performance through cross-training, an approach inspired by human team training practices, *The International Journal of Robotics Research* 34 (2015) 1711–1730.
- [5] S. Haddadin, A. Albu-Schäffer, G. Hirzinger, Requirements for safe robots: Measurements, analysis and new insights, *The International Journal of Robotics Research* 28 (2009) 1507–1527.
- [6] J. Saenz, N. Elkmann, O. Gibaru, P. Neto, Survey of methods for design of collaborative robotics applications-why safety is a barrier to more widespread robotics uptake, in: *4th International Conference on Mechatronics and Robotics Engineering*, 2018.
- [7] X. Chu, Q. Hu, J. Zhang, Path planning and collision avoidance for a multi-arm space maneuverable robot, *IEEE Transactions on Aerospace and Electronic Systems* 54 (2018) 217–232.
- [8] B. Jeon, H. Kim, H. J. Kim, Collision avoidance of robotic arm of aerial manipulator, in: *Control Conference (ASCC), 2017 11th Asian*, IEEE, 2017, pp. 1859–1864.
- [9] M. Svenstrup, S. Tranberg, H. J. Andersen, T. Bak, Pose estimation and adaptive robot behaviour for human-robot interaction, in: *2009 IEEE International Conference on Robotics and Automation*, 2009, pp. 3571–3576. doi:10.1109/ROBOT.2009.5152690.
- [10] Intelligent interactive spaces - integration of it and robotics, in: *IEEE Workshop on Advanced Robotics and its Social Impacts*, 2005., 2005, pp. 85–90. doi:10.1109/ARSO.2005.1511628.
- [11] F. Flacco, T. Kröger, A. De Luca, O. Khatib, A depth space approach to human-robot collision avoidance, in: *Robotics and Automation (ICRA), 2012 IEEE International Conference on*, IEEE, 2012, pp. 338–345.
- [12] M. Khatib, K. A. Khudir, A. De Luca, Visual coordination task for human-robot collaboration, in: *2017 IEEE/RSJ International Conference on Intelligent Robots and Systems (IROS)*, 2017, pp. 3762–3768. doi:10.1109/IROS.2017.8206225.
- [13] O. Khatib, Real-time obstacle avoidance for manipulators and mobile robots, *The international journal of robotics research* 5 (1986) 90–98.

- [14] F. Fabrizio, A. D. Luca, Real-time computation of distance to dynamic obstacles with multiple depth sensors, *IEEE Robotics and Automation Letters* 2 (2017) 56–63. doi:10.1109/LRA.2016.2535859.
- [15] F. Flacco, A. D. Luca, O. Khatib, Control of redundant robots under hard joint constraints: Saturation in the null space, *IEEE Transactions on Robotics* 31 (2015) 637–654. doi:10.1109/TRO.2015.2418582.
- [16] A. Fenucci, M. Indri, F. Romanelli, A real time distributed approach to collision avoidance for industrial manipulators, in: *Proceedings of the 2014 IEEE Emerging Technology and Factory Automation (ETFA)*, 2014, pp. 1–8. doi:10.1109/ETFA.2014.7005160.
- [17] A. M. Zanchettin, B. Lacevic, P. Rocco, Passivity-based control of robotic manipulators for safe cooperation with humans, *International Journal of Control* 88 (2015) 429–439. URL: <https://doi.org/10.1080/00207179.2014.956338>. doi:10.1080/00207179.2014.956338. arXiv:<https://doi.org/10.1080/00207179.2014.956338>.
- [18] R. Meziane, M. J.-D. Otis, H. Ezzaidi, Human-robot collaboration while sharing production activities in dynamic environment: Spader system, *Robotics and Computer-Integrated Manufacturing* 48 (2017) 243 – 253. URL: <http://www.sciencedirect.com/science/article/pii/S0736584515301447>. doi:<https://doi.org/10.1016/j.rcim.2017.04.010>.
- [19] F. Rubio, C. Llopis-Albert, F. Valero, J. L. Suárez, Industrial robot efficient trajectory generation without collision through the evolution of the optimal trajectory, *Robotics and Autonomous Systems* 86 (2016) 106–112.
- [20] V. Perdereau, C. Passi, M. Drouin, Real-time control of redundant robotic manipulators for mobile obstacle avoidance, *Robotics and Autonomous Systems* 41 (2002) 41–59.
- [21] A. Shukla, E. Singla, P. Wahi, B. Dasgupta, A direct variational method for planning monotonically optimal paths for redundant manipulators in constrained workspaces, *Robotics and Autonomous Systems* 61 (2013) 209–220.
- [22] R. Palm, Control of a redundant manipulator using fuzzy rules, *Fuzzy Sets and Systems* 45 (1992) 279 – 298. URL: <http://www.sciencedirect.com/science/article/pii/016501149290146U>. doi:[https://doi.org/10.1016/0165-0114\(92\)90146-U](https://doi.org/10.1016/0165-0114(92)90146-U).
- [23] S. Haddadin, R. Belder, A. Albu-Schaffer, Dynamic motion planning for robots in partially unknown environments*, *IFAC Proceedings Volumes* 44 (2011) 6842 – 6850. doi:<http://dx.doi.org/10.3182/20110828-6-IT-1002.02500>, 18th IFAC World Congress.

- [24] L. Singh, H. Stephanou, J. Wen, Real-time robot motion control with circulatory fields, in: Proceedings., 1996 IEEE International Conference on Robotics and Automation, volume 3, IEEE, 1996, pp. 2737–2742.
- [25] P. Bosscher, D. Hedman, Real-time collision avoidance algorithm for robotic manipulators, *Industrial Robot: An International Journal* 38 (2011) 186–197.
- [26] L. E. Kavraki, P. Svestka, J. . Latombe, M. H. Overmars, Probabilistic roadmaps for path planning in high-dimensional configuration spaces, *IEEE Transactions on Robotics and Automation* 12 (1996) 566–580. doi:10.1109/70.508439.
- [27] P. Leven, S. Hutchinson, A framework for real-time path planning in changing environments, *The International Journal of Robotics Research* 21 (2002) 999–1030.
- [28] B. Schmidt, L. Wang, Depth camera based collision avoidance via active robot control, *Journal of Manufacturing Systems* 33 (2014) 711 – 718. doi:<https://doi.org/10.1016/j.jmsy.2014.04.004>.
- [29] A. Mohammed, B. Schmidt, L. Wang, Active collision avoidance for human–robot collaboration driven by vision sensors, *International Journal of Computer Integrated Manufacturing* 30 (2017) 970–980. URL: <https://doi.org/10.1080/0951192X.2016.1268269>. doi:10.1080/0951192X.2016.1268269. arXiv:<https://doi.org/10.1080/0951192X.2016.1268269>.
- [30] A. Skoglund, B. Iliev, B. Kadmiry, R. Palm, Programming by demonstration of pick-and-place tasks for industrial manipulators using task primitives, in: 2007 International Symposium on Computational Intelligence in Robotics and Automation, IEEE, 2007, pp. 368–373.
- [31] M. Safeea, P. Neto, R. Bearee, Efficient calculation of minimum distance between capsules and its use in robotics, *IEEE Access* 7 (2019) 5368–5373. doi:10.1109/ACCESS.2018.2889311.
- [32] M. Safeea, P. Neto, Minimum distance calculation using laser scanner and imus for safe human-robot interaction, *Robot and Computer-Integrated Manufacturing* 54 (2018) 217–232.
- [33] S. R. Buss, Introduction to inverse kinematics with jacobian transpose, pseudoinverse and damped least squares methods, *IEEE Journal of Robotics and Automation* 17 (2004) 16.
- [34] M. Safeea, P. Neto, Kuka sunrise toolbox: Interfacing collaborative robots with matlab, *IEEE Robotics Automation Magazine* 26 (2019) 91–96. doi:10.1109/MRA.2018.2877776.
- [35] KUKA Sunrise.Connectivity Servoing 1.7, KUKA Roboter GmbH, 2015.

- [36] P. Besset, R. Béarée, Fir filter-based online jerk-constrained trajectory generation, *Control Engineering Practice* 66 (2017) 169 – 180. URL: <http://www.sciencedirect.com/science/article/pii/S096706611730151X>. doi:<https://doi.org/10.1016/j.conengprac.2017.06.015>.
- [37] S. L. Nogueira, S. Lambrecht, R. S. Inoue, M. Bortole, A. N. Montagnoli, J. C. Moreno, E. Rocon, M. H. Terra, A. A. G. Siqueira, J. L. Pons, Global kalman filter approaches to estimate absolute angles of lower limb segments, *BioMedical Engineering On-Line* 16 (2017) 58. URL: <https://doi.org/10.1186/s12938-017-0346-7>. doi:10.1186/s12938-017-0346-7.