



HAL
open science

Pre-clinical blocking of PD-L1 molecule, which expression is down regulated by NF- κ B, JAK1/JAK2 and BTK inhibitors, induces regression of activated B-cell lymphoma

Christelle Vincent-Fabert, Lilian Roland, Ursula Zimmer-Strobl, Jean Feuillard, Nathalie Faumont

► To cite this version:

Christelle Vincent-Fabert, Lilian Roland, Ursula Zimmer-Strobl, Jean Feuillard, Nathalie Faumont. Pre-clinical blocking of PD-L1 molecule, which expression is down regulated by NF- κ B, JAK1/JAK2 and BTK inhibitors, induces regression of activated B-cell lymphoma. *Cell Communication and Signaling*, 2019, 17 (1), 10.1186/s12964-019-0391-x . hal-02361818

HAL Id: hal-02361818

<https://hal.science/hal-02361818>

Submitted on 3 Nov 2023

HAL is a multi-disciplinary open access archive for the deposit and dissemination of scientific research documents, whether they are published or not. The documents may come from teaching and research institutions in France or abroad, or from public or private research centers.

L'archive ouverte pluridisciplinaire **HAL**, est destinée au dépôt et à la diffusion de documents scientifiques de niveau recherche, publiés ou non, émanant des établissements d'enseignement et de recherche français ou étrangers, des laboratoires publics ou privés.



Distributed under a Creative Commons Attribution 4.0 International License

RESEARCH

Open Access



Pre-clinical blocking of PD-L1 molecule, which expression is down regulated by NF- κ B, JAK1/JAK2 and BTK inhibitors, induces regression of activated B-cell lymphoma

Christelle Vincent-Fabert¹, Lilian Roland¹, Ursula Zimmer-Strobl², Jean Feuillard¹ and Nathalie Faumont^{1*} 

Abstract

Escape from immune control must be important in the natural course of B-cell lymphomas, especially for those with activation of NF- κ B. The pre-clinical LMP1/CD40-expressing transgenic mouse model is characterized by B-cell specific CD40 signaling responsible for NF- κ B continuous activation with a spleen monoclonal B-cell tumor after 1 year in 60% of cases. LMP1/CD40 tumors B-cells expressed high levels of PD-L1. This expression was dependent on activation of either NF- κ B, JAK1/JAK2 or BTK pathways since these pathways were activated in tumor B-cells and *ex vivo* treatment with the inhibitory molecules PHA-408, ruxolitinib and ibrutinib led to decrease of its expression. Treatment of LMP1/CD40-expressing lymphomatous mice with an anti-PD-L1 monoclonal antibody induced tumor regression with decreased spleen content, activation and proliferation rate of B-cells as well as a marked increase in T-cell activation, as assessed by CD62L and CD44 expression. These results highlight the interest of therapies targeting the PD-1/PD-L1 axis in activated lymphomas with PD-L1 expression, with possible synergies with tyrosine kinase inhibitors.

Keywords: B-cell lymphomas, PD-L1, Immune surveillance

Background

Aberrant expression of the programmed death-ligand 1 (PD-L1, also known as B7-H1 or CD274) checkpoint molecule has been reported in many cancers such as breast, lung and colon tumors as well as during chronic viral infections like those with Epstein-Barr virus (EBV) for example [1, 2]. Efficacy of immunotherapies against the PD-1/PD-L1 axis in lung tumors or melanoma demonstrated the importance of the immune checkpoints in the control of emergence and growth of tumors [2]. As reviewed recently, various publications have indicated that disruption of immune checkpoints is also a critical step in B-cell non-Hodgkin's Lymphomas (NHL) [3]. NF- κ B, one of the most cited transcription factor in B-

cell lymphomas, is able to increase tumor cell expression of PD-L1 either directly or indirectly [3]. NF- κ B constitutive activation is found either in aggressive diffuse large B-cell lymphomas (DLBCL) with an activated phenotype (ABC-DLBCL), or in indolent B-cell lymphomas such as chronic lymphocytic leukemia, Waldenström Macroglobulinemia, marginal zone B-cell lymphomas (MZL) [4]. Here, we wanted to explore the putative interest of PD-L1 immune therapy against B-cell lymphoma with NF- κ B activation. To experimentally address this question, we used a transgenic mouse model which specifically express in B-cells a chimeric protein composed of the transmembrane moiety of the Epstein-Barr Virus latent membrane protein 1 (LMP1) and the transduction tail of CD40 (LMP1/CD40 protein), that results in continuous activation of NF- κ B, responsible for a spleen monoclonal B-cell tumor (LMP1/CD40 B-cell lymphoma) after 1 year in 60% of cases [5].

* Correspondence: nathalie.faumont@unilim.fr

¹UMR-CNRS 7276/INSERM U1262 CRIBL "Contrôle de la Réponse Immune et Lymphoproliférations", CBRS "Centre de Biologie et de Recherche en Santé", Dupuytren Hospital University Center, University of Limoges, Hematology Laboratory of Dupuytren CHU, 2 rue du Pr Descottes, 87025 Limoges, France

Full list of author information is available at the end of the article



Methods

Mouse models and in vivo and ex vivo treatments

LMP1/CD40-expressing mice have been already described [5]. Animals were housed at 21–23 °C with a 12-h light/dark cycle. All procedures were conducted under an approved protocol according to European guidelines for animal experimentation (French national authorization number: 87–022 and French ethics committee registration number “CREEAL”: 09-07-2012). For in vivo PD-L1 treatment, LMP1/CD40-expressing mice were injected intraperitoneally every 4 days for 3 weeks with 200 µg anti-PD-L1 antibody (clone 10F.9G2; Bio X cell; US). For ex vivo treatments, splenocytes were cultured for 48 h in complete RPMI medium (Eurobio) supplemented with 10% of FBS, 2 mM of L-Glutamine, 1% of Na pyruvate, 100 U/ml of penicillin and 100 µg/ml of streptomycin (ThermoFisher Scientific) and with the following treatments: either 10 µM of PHA-408 or 1.5 µM of ruxolitinib or 1 µM of ibrutinib.

Flow cytometry

Spleen from mice were collected and immune cells were filtered through a sterile nylon membrane. Cell suspensions were stained at 4 °C in FACS Buffer (PBS, 1% FBS, 2 mM EDTA) with the following fluorescent-labelled antibodies: anti B220-BV421 (clone RA3-6B2, 1/400), anti CD4-FITC (clone RM4–5, 1/2000), anti CD8a-APC (clone 53–6.7, 1/400), anti CD62L-BV421 (clone MEL-14, 1/200), anti CD44-PE (clone IM7, 1/200), anti-PD-L1-PE (clone 10F.9G2, 1/80), anti PD-1-PECy7 (clone 29F.1A12, 1/50), anti CD80-APC (clone16-10A1, 1/2500) and anti CD86-FITC (clone GL-1, 1/600). Stained cells were analyzed using a BD-Fortessa SORP flow cytometer (BD Bioscience; US). Results were analyzed using Kaluza Flow Cytometry software 1.2 (Beckman Coulter; France).

Proliferation

For in vivo proliferation, mice were injected intraperitoneally with 2 mg BrdU (Sigma-Aldrich, US), 18 h before isolating cells. Splenocytes were stained for B220 and phases of cell cycle were analyzed by measuring BrdU and Propidium Iodide (PI)-incorporation, using the FITC-BrdU Flow Kit (BD Pharmingen; US).

Real time quantitative reverse-transcription PCR

Total RNA was extracted from CD19_Cre or LMP1/CD40 splenocytes and complementary DNAs were reverse transcribed from 1 µg of total RNA samples using the High Capacity cDNA Archive Kit (Life Technologies, Carlsbad, USA). PCR products were amplified from each cDNA using the TaqMan® Universal PCR Master Mix and TaqMan® Gene Expression Assays: IL-10/Mm01288386_m1, PD-L1/Mm03048248_m1, GAPDH/

Mm99999915_g1. The GAPDH gene was used as a reference gene for the control of amplification. The calculated relative gene expression level was equal to 2^{-DDCT} , where DDCT is the delta delta cycle threshold. Gene expression fold changes were calculated as the ratio of the test condition to its control.

Immunoblot

10×10^6 cells were lysed and sonicated in Laemmli sample buffer. Lysates were separated on 12% SDS-PAGE gel and transferred to PVDF membrane. Revelation were done using anti-TRAF1 antibody (N-19) purchased from Santa Cruz Biotechnology; anti-STAT3 antibody (124H6) and anti-phosphoSTAT3 antibody (Tyr 705) (D3A7) from Cell Signaling Technology; and anti-ERK (p-44/42) antibody and anti-phosphoERK antibody (Thr 202/Tyr 204) from Cell Signaling Technology. Signals were visualized with Immobilon™ Western Chemiluminescent HRP Substrate (Millipore). The amount of loaded protein was standardized against GAPDH using an anti-GAPDH antibody from R&D Systems. Membranes were numerized with ChemiDoc™ Touch Imaging System (Bio-Rad) and images were analysed with the Image Lab Software (Bio-Rad).

Results

Our previous transcriptome studies from LMP1/CD40-expressing mice suggested that those tumors might express high levels of CD274/PD-L1 [6]. We thus analyzed the Immune Escape Gene Signature published by C Laurent et al (Additional file 1: Table S1) [7] from the Affymetrix transcriptome (HT MG-430 PM Array, Additional file 1: Table S2 and Additional file 2: Table S3) of a series of six LMP1/CD40 B-cell lymphomas that were compared to their CD19_Cre littermate. As shown in Fig. 1a, both PD-L1 (red arrow) and PD-L2 (orange arrow) were co-clusterized with the immunosuppressive interleukin 10 (IL-10, green arrow), CD80 and MCL1, being over expressed. We confirmed overexpression of IL-10 and PD-L1 by RT-QPCR in 12-month-old LMP1/CD40-expressing mice when compared to CD19_Cre mice (Fig. 1b). We also showed higher levels of total PD-L1 expression by immunoblotting and of PD-L1 exported to the membrane by flow cytometry on LMP1/CD40 lymphoma cells from those mice than on B-cells from age related CD19_Cre mice (Fig. 1c and d).

To address in vivo the role of PD-L1 in these B-cell lymphoma, LMP1/CD40-expressing mice were treated with an antibody blocking PD-1/PD-L1 signaling for 3 weeks according to a methodology already described [8, 9]. We observed a reduction of spleen size and absolute number of splenocytes in anti-PD-L1 treated LMP1/CD40-expressing mice (Fig. 2a), due to decreased B-cell numbers (Fig. 2b) without significantly affecting total

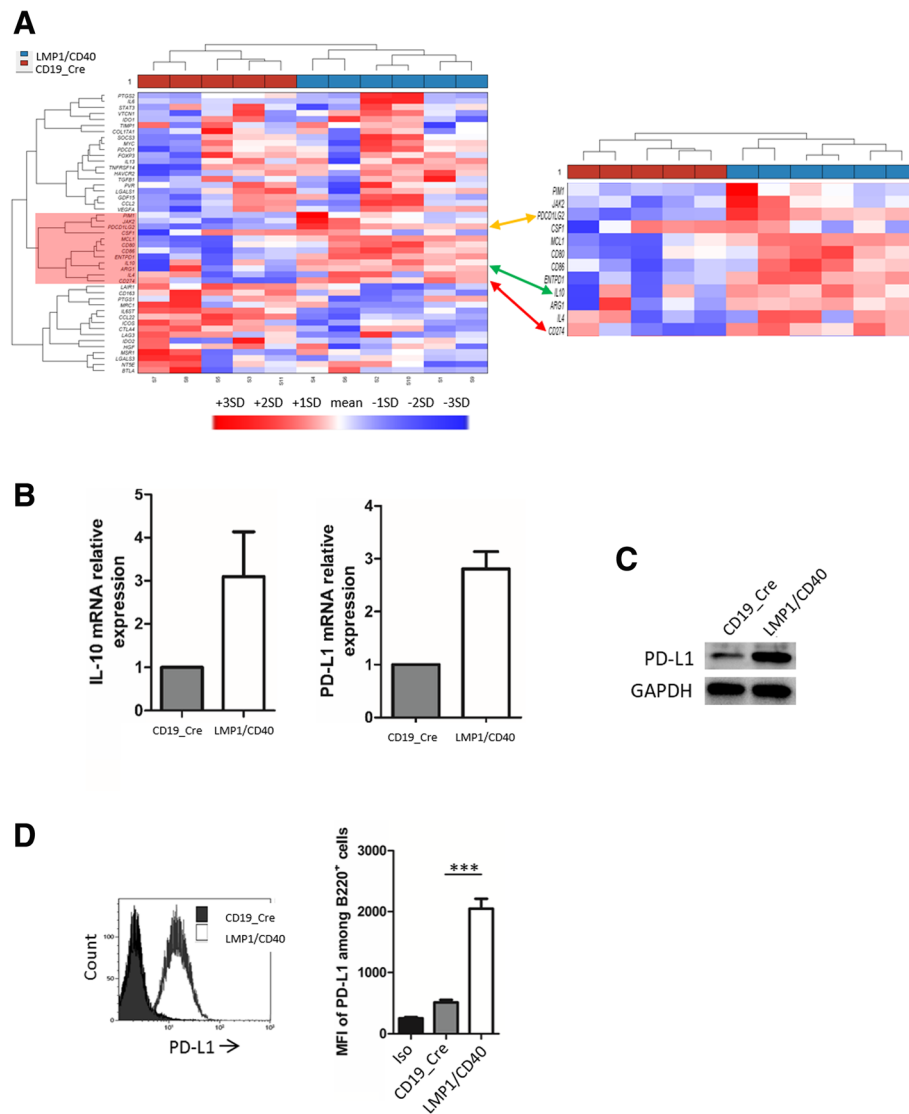


Fig. 1 **a** Clustering of genes from the Immune Escape Gene Signature published by C Laurent et al. for LMP1/CD40 and CD19_Cre mice. The specific cluster for LMP1/CD40-expressing mice is highlighted in red. PD-L1 is pointed by the arrow. **b** Analysis of IL-10 and PD-L1 expression by RT-QPCR and **(c)** western-blot analysis of PD-L1 expression from 12-month-old CD19_Cre and LMP1/CD40-expressing mice. **d** Left panel, overlay example of PD-L1 monoparametric histograms gated on B220 B-cells. Right panel, flow cytometry Mean Fluorescence Intensity (MFI) of PD-L1 on B-cells from 12-month-old control CD19_Cre and transgenic LMP1/CD40-expressing mice. Labelling with isotype antibody (Iso). Statistical significance was determined by unpaired t-test (***) $P < 0.001$

numbers of T-cells and granulocytes (Additional file 3: Figure S1). With PD-L1 blockade, we noticed a decrease in numbers of activated B-cells in LMP1/CD40-expressing mice (Fig. 2c). This was associated with a reduction in the in vivo proliferation rate of spleen B-cells, as assessed by the decrease of in vivo BrdU incorporation over 18 h (Fig. 2d). Morphologically, spleen lymphocytes from anti-PD-L1 treated LMP1/CD40-expressing mice were smaller with a more condensed chromatin (Fig. 2e). We then studied the impact of PD-1/PD-L1 blockade in T-cell compartment. Expression of T-cell activation markers CD62L and CD44 was increased on both

CD4 and CD8 T-cells (Fig. 3a). In parallel, an increase in PD-1 expression was observed on the surface of CD4 T-cells. This increase in PD-1 expression was more heterogeneous on CD8 T-cells (Fig. 3b).

In addition to be able to activate the classical pathway, CD40 is a strong inducer of the alternative NF- κ B activating pathway as already shown in LMP/CD40 mice [5]. CD40 constitutive activation of B-cells increases IL-10 expression [10]. IL-10 receptor signaling is mediated by the JAK1 and Tyk2 tyrosine kinase that leads to activation of STAT3 transcription factor, STAT3 being a major inducer of PD-L1 gene expression [11]. CD40

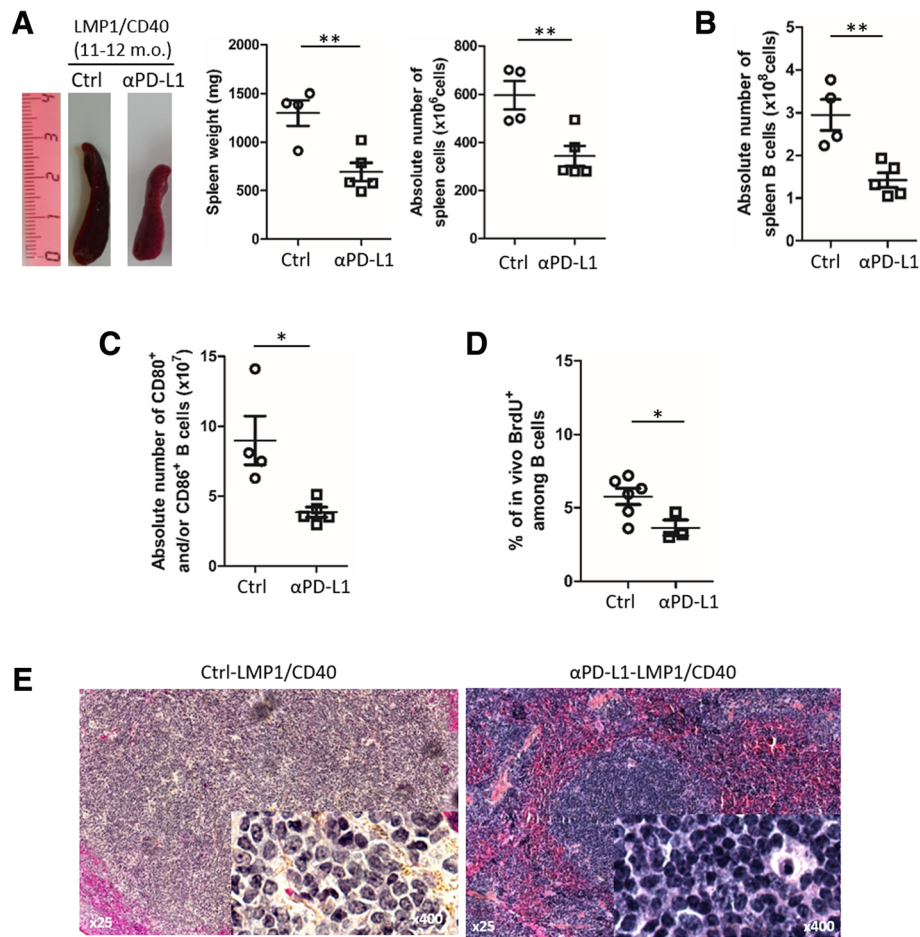
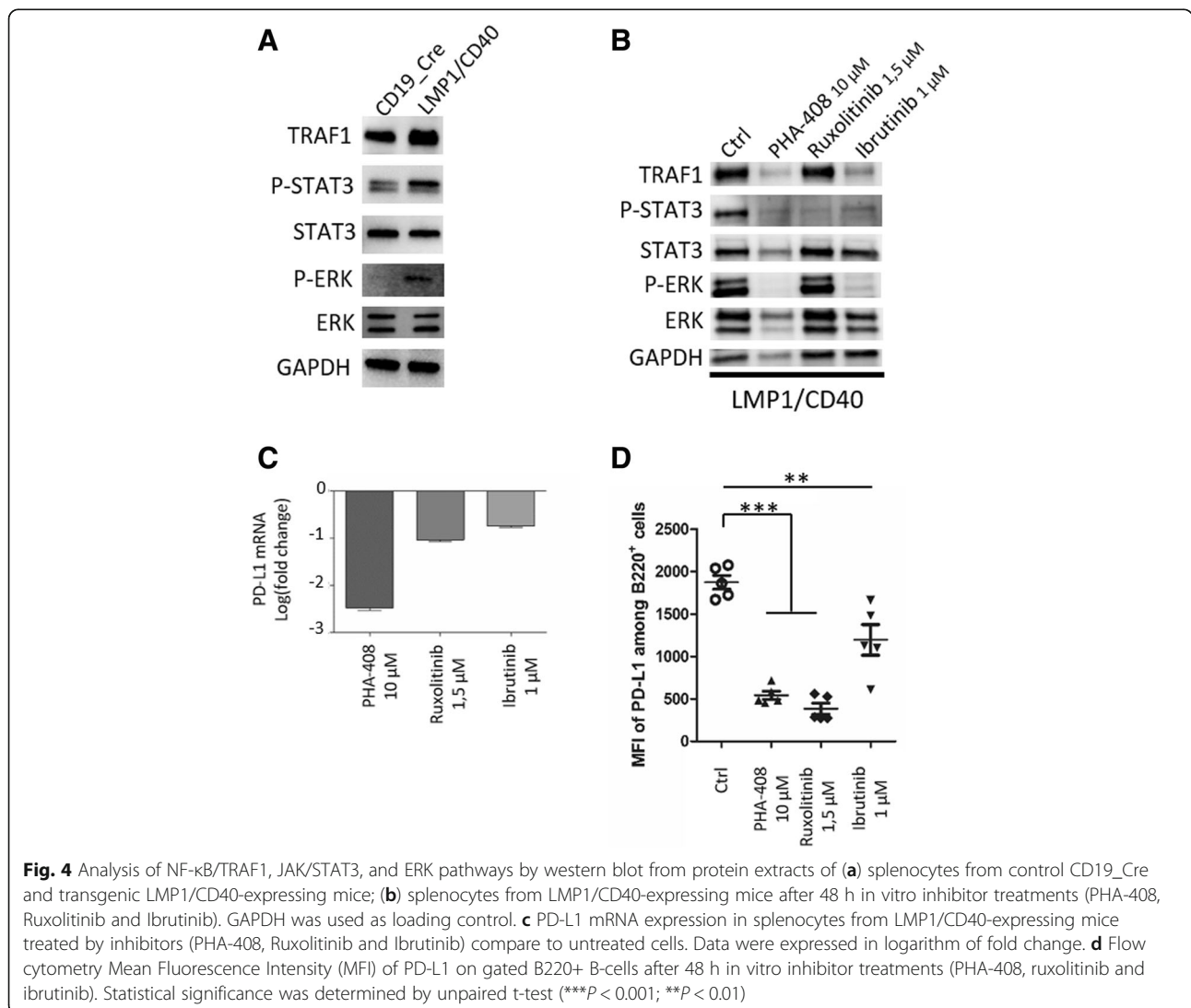
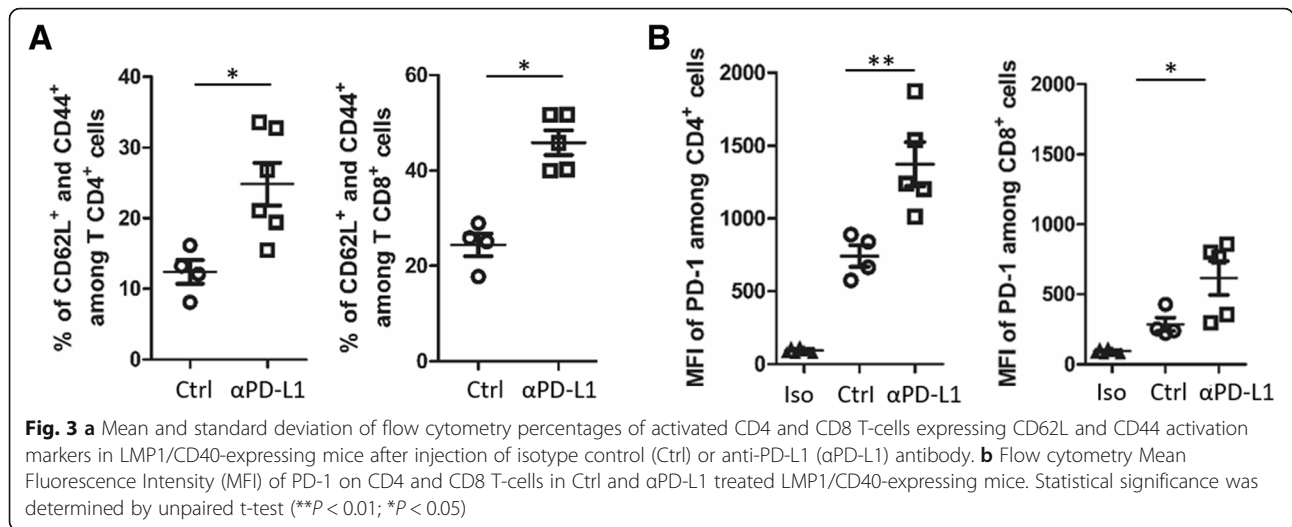


Fig. 2 **a** Left panel, examples of whole spleens from isotype control (Ctrl) and anti-PD-L1 (α PD-L1) antibody treated LMP1/CD40-expressing mice; middle panel, mean and standard deviation of spleen weight; right panel, absolute numbers of spleen B cells. For the PD-L1 treatment, LMP1/CD40-expressing mice were injected every 4 days for three weeks with 200 μ g anti-PD-L1 antibody in In VivoPure Dilution Buffer (clone 10F.9G2; Bio X cell; US). **b** Spleen B220 B-cell absolute numbers assessed by flow cytometry in Ctrl and α PD-L1 treated LMP1/CD40-expressing mice. **c** Absolute numbers assessed by flow cytometry of spleen B220 B-cells expressing CD80 and/or CD86 activation markers in LMP1/CD40-expressing mice after injection of isotype control (Ctrl) or anti-PD-L1 (α PD-L1) antibody. **d** Mean and standard deviation of flow cytometry percentages of BrdU positive B-cells after in vivo BrdU incorporation in Ctrl and α PD-L1 treated LMP1/CD40-expressing mice. Mice were injected intraperitoneally with 2 mg BrdU, 18 h before isolating cells. **e** Hematein eosin staining of 5 μ m section of paraffin embedded spleen tissues with, as insert, the imprint May-Grunwald staining of the same spleen of Ctrl- (left panel) and α PD-L1- (right panel) LMP1/CD40-expressing mice. Statistical significance was determined by unpaired t-test (** $P < 0.01$; * $P < 0.05$)

stimulation can also augment BCR-induced B cell responses by activation of Bruton's tyrosine kinase (BTK) either directly [12] or by interacting with CD19 [13]. The BCR is also able to induce the IL-10/STAT3 signaling with increased expression of PD-L1 in diffuse large B-cell lymphoma [11]. Comparing splenocytes of LMP1/CD40 mice to those of CD19_Cre mice, allowed to check activation of NF- κ B, as assessed by increased expression of TRAF1. Increased phosphorylation of STAT3 and ERK indicated that IL-10 and BCR-related signaling pathways were also constitutively activated (Fig. 4a). LMP1/CD40 lymphoma B-cells were ex vivo treated with the PHA-408 molecule, an inhibitor of IKK2/NF- κ B activation, the JAK1/JAK2 tyrosine kinase inhibitor

(TKI) ruxolitinib, and the BTK inhibitor ibrutinib. As expected, treatment with PHA-408 led to decreased expression of TRAF1 protein. This treatment also resulted in decreased phosphorylation of both STAT3 and ERK. Ruxolitinib treatment only decreased STAT3 activation. In presence of ibrutinib, TRAF1 expression and STAT3 phosphorylation were moderately decreased while ERK phosphorylation was completely abolished (Fig. 4b). As shown in Fig. 4c, PD-L1 mRNA expression was decreased in presence of the three inhibitors. This result was confirmed at the protein level. At the membrane level, PD-L1 expression was strongly reduced 48 h after treatment with either PHA-408 or Ruxolitinib and moderately with ibrutinib (Fig. 4d). These inhibitors also



decreased IL-10 expression (Additional file 3: Figure S2). Of note, modulation of PD-L1 expression was no longer observed on wild type CD19_Cre splenocytes treated with inhibitors (Additional file 3: Figure S3). Furthermore, CD40 plus IL-4, BCR, and IL-10R stimulation of CD19_Cre splenocytes induced over-expression of PD-L1, that induction being repressed when cells were treated with these inhibitors (Additional file 3: Figure S4).

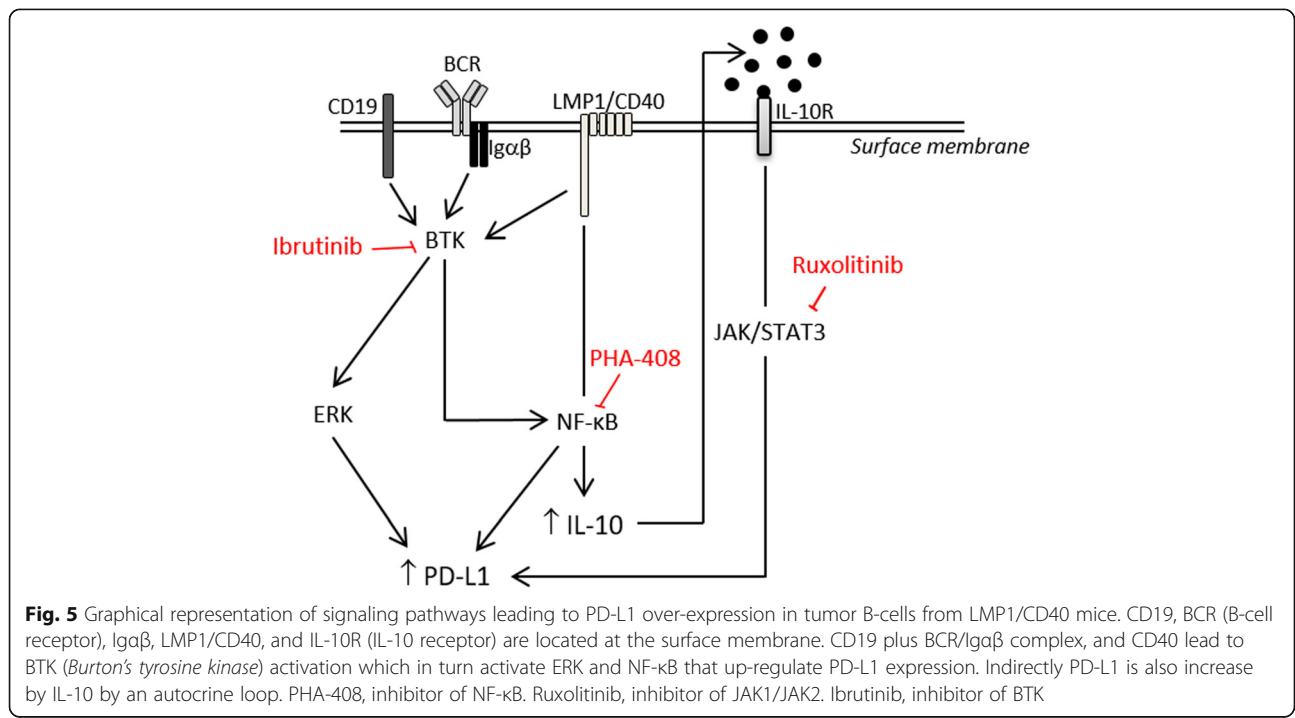
Altogether, these results show that CD40, IL-10 and BCR signaling pathways have complex interplays. As summarized in Fig. 5, the CD40 signaling pathway would be directly responsible for NF-κB activation and would increase the BCR signaling. Both BCR and CD40 signaling would lead to IL-10 secretion that secondary activate the JAK/STAT pathway in an autocrine manner. With NF-κB, both ERK and STAT3 activation would up-regulate expression of PD-L1. Blocking either NF-κB, BCR or STAT3 activation would lead to decreased PD-L1 expression. PD-L1 expression was thus under the control of CD40 activation, either directly through NF-κB activation or indirectly through IL-10 induction of BCR sensitization and BTK activation.

Discussion

Expression of PD-1 and PD-L1 in B-cell lymphomas and effect of immune therapies against the immune checkpoint axe has been recently reviewed [3]. Expression of PD-L1 by tumor cells and effect of anti-PD-1 immune therapy has been clearly demonstrated in Hodgkin's

lymphoma, a tumor which is constantly associated with both NF-κB and STAT3 activation. In DLBCL, expression of PD-L1 is variable but participates to the gene immune escape signature of ABC-DLBCLs [3, 7]. ABC-DLBCL are not only associated with NF-κB activation but may exhibit a chronic active BCR [14] and are sensitive to BTK inhibitors [15]. STAT3 activation mainly found in ABC-DLBCLs and is associated with poor survival [16].

Here, our results show that NF-κB activated B-cell lymphoma of the LMP1/CD40-expressing mouse model exhibited an immune escape gene signature involving expression of PD-L1 and PD-L2, which expression was co-clusterized with IL-10. Over-expression of PD-L1 not only involved NF-κB activation by CD40 but also BTK and JAK/STAT signaling, the latter probably being indirectly regulated via an autocrine loop with participation of IL-10 for example. Indeed, PD-L1 expression could be down-regulated after treated with NF-κB, JAK1/JAK2 and BTK inhibitors. Expression of PD-L1 was very likely to be associated to tumor immune escape as demonstrated for numerous solid cancers such as melanoma of lung cancers [2]. Indeed, in vivo blockade of PD-L1 was able to rapidly repress expansion of these B-cell lymphomas, with concomitant decrease in both B-cell proliferation and B-cell expression of activation markers as well as an increase in T-cell activation. Among these markers are expression of PD-1 on both CD4 and CD8 T-cells. PD-1 is transcriptionally induced in activated T cells [17]. PD-1 expression on activated T-cells allowed



subsequent exhaustion and inhibition thank to PD-1/PD-L1 interaction to return to unactivated state [18]. Our results indicate that such T-cell inhibition no longer occurred when PD-L1 was blocked.

Conclusion

Our results indicate that therapies against the PD-L1/PD-1 axis may work in lymphomas as long as the tumor cells express PD-L1. Our results also suggest that combination of immune therapy targeting the PD-1/PD-L1 axis and TKI specific for the JAK/STAT or the BCR/BTK pathway could be of interest. Even if these chemical inhibitors such as ruxolitinib or ibrutinib could have their own inhibitory effect on actors of the anti-tumor response such as cytotoxic T-cells or macrophages, our results also raise the question of the effect of these molecules on the local reactivation of the immune system.

Additional files

Additional file 1: Table S1. Immune Escape Gene signature adapted to the Affymetrix HG-U133_Plus_2 array. **Table S2.** Immune Escape Gene signature adapted to the HT MG-430 PM Array. (DOCX 32 kb)

Additional file 2: Table S3. Normalized expression levels of genes belonging to the immune escape gene signature of splenocytes from LMP1/CD40 and CD19_Cre mice. (DOCX 25 kb)

Additional file 3: Figure S1. Absolute number of spleen granulocytes (A) and T-cells (B) in LMP1/CD40-expressing mice after injection of isotype control (Ctrl) or anti-PD-L1 (αPD-L1) antibody. For the PD-L1 treatment, LMP1/CD40-expressing mice were injected every 4 days for three weeks with 200 μg anti-PD-L1 antibody in On VivoPure Dilution Buffer (clone 10F.9G2; Bio X cell; US). ns, non-significant. **Figure S2.** IL-10 mRNA expression in splenocytes from LMP1/CD40-expressing mice treated with the PHA-408, ruxolitinib and ibrutinib inhibitors. Results are expressed in logarithm of fold change by comparison with the control. **Figure S3.** Analysis of NF-κB/TRAF1, JAK/STAT3, and ERK pathways by western blot of protein extracts from splenocytes of control CD19_Cre mice after 48 h in vitro treatment with the PHA-408, ruxolitinib and ibrutinib inhibitors. GAPDH was used as loading control. **Figure S4.** Analysis of PD-L1 expression by western blot of protein extracts from splenocytes of CD19_Cre mice i) after 48 h in vitro CD40 (R&D Systems), CD40 plus IL-4 (Peprotech), IL-10 (R&D Systems), IgM (Jackson ImmunoResearch) stimulations (lane 2 to 5), and ii) after 24 h in vitro CD40, CD40 plus IL-4, IL-10, IgM stimulations followed by 24 h treatment with the PHA-408, ruxolitinib and ibrutinib inhibitors (lanes 6 to 9). GAPDH was used as loading control. (PPTX 6393 kb)

Abbreviations

ABC-DLBCL: Diffuse large B-cell lymphomas with an activated phenotype; BCR: B-cell receptor; BTK Inhibitor (ibrutinib): Bruton's tyrosine kinase inhibitor; CD19_Cre mice: Mice expressing Cre-recombinase under the control of the B-specific CD19 promoter; EBV: Epstein-Barr virus; LMP1/CD40 protein: Fusion protein containing the amino-terminal part and the transmembrane part of the Epstein-Barr Virus latent membrane protein 1 and the transduction tail of CD40; LMP1/CD40-expressing mice: Mice expressing LMP1/CD40 fusion protein only in B-cell thanks to a stop cassette deletion by Cre-recombinase at the CD19 locus; NF-κB: Nuclear factor kappa B; PD-1: Also known as CD279, Programmed cell death 1; PD-L1: Also known as B7-H1 or CD274, programmed death-ligand 1; PHA-408: An inhibitor of I kappa-B kinase 2; TKI (ruxolitinib): Janus kinase 1/2 tyrosine kinase inhibitor

Acknowledgements

We thank Dr. J Cook Moreau, UMR CNRS 7276, Limoges, France, for English editing.

Authors' contributions

C.V.F. performed, analyzed experiments and contributed to the writing. L.R. helped to perform proliferation and flow cytometry experiments. U.Z.S. helped analyze the results and contributed to the writing of the manuscript. J.F. and N.F. designed and directed the study, contributed to the experiments, analyzed the results and wrote the manuscript. All authors read and approved the final manuscript.

Funding

The group of J Feuillard is supported by grants from the Ligue Nationale contre le Cancer (Equipe Labellisée Ligue), the Institut National du Cancer (INCa), the Comité Orientation Recherche Cancer (CORC), the Limousin Region and the Haute Vienne and Corrèze committees of the Ligue Nationale Contre le Cancer and by the Lyons Club of Corrèze. U Zimmer-Strobl was supported by the German Research Foundation (SFB 1243, TP-A13).

Availability of data and materials

The data sets supporting the results of this article are included within the article and its additional files.

Ethics approval and consent to participate

Not applicable.

Consent for publication

Not applicable.

Competing interests

The authors declare that they have no competing interests.

Author details

¹UMR-CNRS 7276/INSERM U1262 CRIBL "Contrôle de la Réponse Immune B et Lymphoproliférations", CBRS "Centre de Biologie et de Recherche en Santé", Dupuytren Hospital University Center, University of Limoges, Hematology Laboratory of Dupuytren CHU, 2 rue du Pr Descottes, 87025 Limoges, France. ²Research Unit Gene Vectors, Helmholtz Center Munich, German Research Center for Environmental Health GmbH, Munich, Germany.

Received: 22 January 2019 Accepted: 15 July 2019

Published online: 05 August 2019

References

- Durand-Panteix S, Farhat M, Youlyouze-Marfak I, Rouaud P, Ouk-Martin C, David A, et al. B7-H1, which represses EBV-immortalized B cell killing by autologous T and NK cells, is oppositely regulated by c-Myc and EBV latency III program at both mRNA and secretory lysosome levels. *J Immunol Baltim Md 1950*. 2012;189(1):181–190.
- Topalian SL, Drake CG, Pardoll DM. Immune checkpoint blockade: a common denominator approach to cancer therapy. *Cancer Cell*. 2015;27(4):450–61.
- Xu-Monette ZY, Zhou J, Young KH. PD-1 expression and clinical PD-1 blockade in B-cell lymphomas. *Blood*. 2018;131(1):68–83.
- Yu L, Li L, Medeiros LJ, Young KH. NF-κB signaling pathway and its potential as a target for therapy in lymphoid neoplasms. *Blood Rev*. 2017;31(2):77–92.
- Hömig-Hölzel C, Hojjer C, Rastelli J, Casola S, Strobl LJ, Müller W, et al. Constitutive CD40 signaling in B cells selectively activates the noncanonical NF-κappaB pathway and promotes lymphomagenesis. *J Exp Med*. 2008; 205(6):1317–29.
- David A, Arnaud N, Fradet M, Lascaux H, Ouk-Martin C, Gachard N, et al. C-Myc dysregulation is a co-transforming event for nuclear factor-κB activated B cells. *Haematologica*. 2017;102(5):883–94.
- Laurent C, Champi K, Gravelle P, Tosolini M, Franchet C, Ysebaert L, et al. Several immune escape patterns in non-Hodgkin's lymphomas. *Oncoimmunology*. 2015;4(8):e1026530.
- Zhang L, Gajewski TF, Kline J. PD-1/PD-L1 interactions inhibit antitumor immune responses in a murine acute myeloid leukemia model. *Blood*. 2009; 114(8):1545–52.

9. Deng L, Liang H, Burnette B, Beckett M, Darga T, Weichselbaum RR, et al. Irradiation and anti-PD-L1 treatment synergistically promote antitumor immunity in mice. *J Clin Invest*. 2014;124(2):687–95.
10. Koni PA, Bolduc A, Takezaki M, Ametani Y, Huang L, Lee JR, et al. Constitutively CD40-activated B cells regulate CD8 T cell inflammatory response by IL-10 induction. *J Immunol Baltim Md 1950*. 1 avr 2013;190(7):3189-96.
11. Li L, Zhang J, Chen J, Xu-Monette ZY, Miao Y, Xiao M, et al. B-cell receptor-mediated NFATc1 activation induces IL-10/STAT3/PD-L1 signaling in diffuse large B-cell lymphoma. *Blood*. 25 oct 2018;132(17):1805-17.
12. Brunner C, Avots A, Kreth HW, Serfling E, Schuster V. Bruton's tyrosine kinase is activated upon CD40 stimulation in human B lymphocytes. *Immunobiology*. oct 2002;206(4):432-40.
13. Hojer C, Frankenberger S, Strobl LJ, Feicht S, Djermanovic K, Jagdhuber F, et al. B-cell expansion and lymphomagenesis induced by chronic CD40 signaling is strictly dependent on CD19. *Cancer Res*. 15 août 2014;74(16):4318-28.
14. Davis RE, Ngo VN, Lenz G, Tolar P, Young RM, Romesser PB, et al. Chronic active B-cell-receptor signalling in diffuse large B-cell lymphoma. *Nature*. 7 janv 2010;463(7277):88-92.
15. Wilson WH, Young RM, Schmitz R, Yang Y, Pittaluga S, Wright G, et al. Targeting B cell receptor signaling with ibrutinib in diffuse large B cell lymphoma. *Nat Med*. août 2015;21(8):922-6.
16. Huang X, Meng B, Iqbal J, Ding BB, Perry AM, Cao W, et al. Activation of the STAT3 signaling pathway is associated with poor survival in diffuse large B-cell lymphoma treated with R-CHOP. *J Clin Oncol Off J Am Soc Clin Oncol*. 20 déc 2013;31(36):4520-8.
17. Agata Y, Kawasaki A, Nishimura H, Ishida Y, Tsubata T, Yagita H, et al. Expression of the PD-1 antigen on the surface of stimulated mouse T and B lymphocytes. *Int Immunol*. mai 1996;8(5):765-72.
18. Freeman GJ, Long AJ, Iwai Y, Bourque K, Chernova T, Nishimura H, et al. Engagement of the PD-1 immunoinhibitory receptor by a novel B7 family member leads to negative regulation of lymphocyte activation. *J Exp Med*. 2000;192(7):1027–34.

Publisher's Note

Springer Nature remains neutral with regard to jurisdictional claims in published maps and institutional affiliations.

Ready to submit your research? Choose BMC and benefit from:

- fast, convenient online submission
- thorough peer review by experienced researchers in your field
- rapid publication on acceptance
- support for research data, including large and complex data types
- gold Open Access which fosters wider collaboration and increased citations
- maximum visibility for your research: over 100M website views per year

At BMC, research is always in progress.

Learn more biomedcentral.com/submissions

