



HAL
open science

Cathodoluminescence enhancement and quenching in type-I van der Waals heterostructures: Cleanliness of the interfaces and defect creation

G. Nayak, S. Lisi, W.-L. Liu, T. Jakubczyk, P. Stepanov, F. Donatini, K. Watanabe, T. Taniguchi, A Bid, J. Kasprzak, et al.

► **To cite this version:**

G. Nayak, S. Lisi, W.-L. Liu, T. Jakubczyk, P. Stepanov, et al.. Cathodoluminescence enhancement and quenching in type-I van der Waals heterostructures: Cleanliness of the interfaces and defect creation. *Physical Review Materials*, 2019, 3 (11), pp.114001. 10.1103/PhysRevMaterials.3.114001 . hal-02360330

HAL Id: hal-02360330

<https://hal.science/hal-02360330v1>

Submitted on 8 Mar 2022

HAL is a multi-disciplinary open access archive for the deposit and dissemination of scientific research documents, whether they are published or not. The documents may come from teaching and research institutions in France or abroad, or from public or private research centers.

L'archive ouverte pluridisciplinaire **HAL**, est destinée au dépôt et à la diffusion de documents scientifiques de niveau recherche, publiés ou non, émanant des établissements d'enseignement et de recherche français ou étrangers, des laboratoires publics ou privés.

Cathodoluminescence enhancement and quenching in Type I van der Waals Heterostructures: cleanliness of the interfaces and defect creation

G. Nayak,¹ S. Lisi,¹ W-L. Liu,¹ T. Jakubczyk,^{1,*} P. Stepanov,¹ F. Donatini,¹ K. Watanabe,² T. Taniguchi,² A. Bid,³ J. Kasprzak,¹ M. Richard,¹ V. Bouchiat,¹ J. Coraux,¹ L. Marty,¹ N. Bendiab,¹ and J. Renard^{1,†}

¹*Univ. Grenoble Alpes, CNRS, Grenoble INP, Institut Néel, 38000 Grenoble, France*

²*National Institute for Materials Science, Tsukuba, 305-0044, Japan*

³*Department of Physics, Indian Institute of Science, Bangalore 560012, India*

(Dated: March 8, 2022)

Layered materials, such as transition metal dichalcogenides can be combined at will in van der Waals heterostructures and lead to a variety of new phenomena. To better understand the coupling between layers and the variation of electronic and optical properties, non-invasive techniques with the best possible spatial resolution are needed. Here we show that owing to an enhanced interaction cross section with electrons in a type I van der Waals heterostructure, made of single layer molybdenum disulphide and thin boron nitride, cathodoluminescence is strongly enhanced. It can be mapped with a spatial resolution far exceeding what can be achieved in more commonly used photoluminescence experiments, thereby providing invaluable insights into the optoelectronic properties at the nanoscale. We demonstrate that the technique is non-invasive, *i.e.* does not induce any defect, only if the interface between boron nitride and the molybdenum disulphide layer is pristine. In the presence of trapped species, structural defects are locally induced by the electron beam in the layer. Such defects quench the luminescence and present clear Raman signatures. We show that optimizing the heterostructure preparation techniques can lead to extended area with clean interfaces that lead to a more homogeneous cathodoluminescence signal.

I. INTRODUCTION

The development of deterministic stacking of individual or few layers from layered materials such as graphite, boron nitride, or transition metal dichalcogenides (TMDCs) in the last few years allows now to build van der Waals heterostructures at will [1]. Even though such structures are produced in conditions that are far from ultra high vacuum conditions usually required to obtain very high quality heterostructures, careful preparation yields clean enough interfaces to observe phenomena requiring efficient electronic coupling between layers. For instance, long-lived interlayer excitons were observed [2, 3], interlayer exciton-phonon coupling was reported in WSe_2 /hexagonal boron nitride (h-BN) [4], interlayer phonon coupling was demonstrated in MoS_2 /graphene [5] as well as in TMDC-based van der Waals heterostructures [6]. These achievements demonstrate that both inter-layer electronic and structural coupling can be obtained in such heterostructures. Moiré superlattices, which are the van der Waals (soft) counterpart of dislocation networks in heteroepitaxial three-dimensional semiconductors, enrich the electronic and optical properties [7–11].

Direct observations with high resolution transmission electron microscopy indeed revealed locally perfect crystalline interfaces between two-dimensional materials, with no apparent defects and only a van der Waals gap

a few Ångström-thick, devoid of impurity species [12]. Even though beam-induced damages can be reduced by lowering the energy of the electron beam to a few 10 keV in the transmission electron microscope column [13], such analysis is destructive (the samples need to be cut and thinned down to a few nanometer), and it is tedious to extend it at the scale of the entire heterostructure. On the contrary optical hyperspectral microscopies, mapping excitonic (photoluminescence) or vibrational (Raman) interlayer modes of the heterostructures, require no additional sample preparation, and provide indirect information on the quality of interfaces [6, 14]. Their downside is their limited spatial resolution, which conceals information on, *e.g.*, strain or electronic doping variations at scales below a few 100 nm.

Cathodoluminescence (CL) is a powerful tool to study opto-electronic properties at the nanometer scale, when implemented in a scanning electron microscope. Here, an electron beam of adjustable energy in the keV range excites electrons and holes, that can form electron-hole pairs (excitons) and recombine radiatively, giving local spectroscopic information. In that case spatial resolution is linked to the size of the excitation source, *i.e.* the electron beam which is as small as a few nanometers, rather than limited by the optical diffraction limit. In fact, spatial resolution in such experiment could ultimately be set by the diffusion of the excitons. It can reach several hundreds of nanometers at room temperature in monolayer TMDCs but is expected to be strongly quenched at low temperature due to the enhancement of the radiative recombination rate [15].

Due to the low interaction with the electron beam, atomically thin layers are expected to produce a small signal below the detection limit of most instruments. In

* Present address: Department of Physics, University of Basel, 4056 Basel, Switzerland

† julien.renard@neel.cnrs.fr

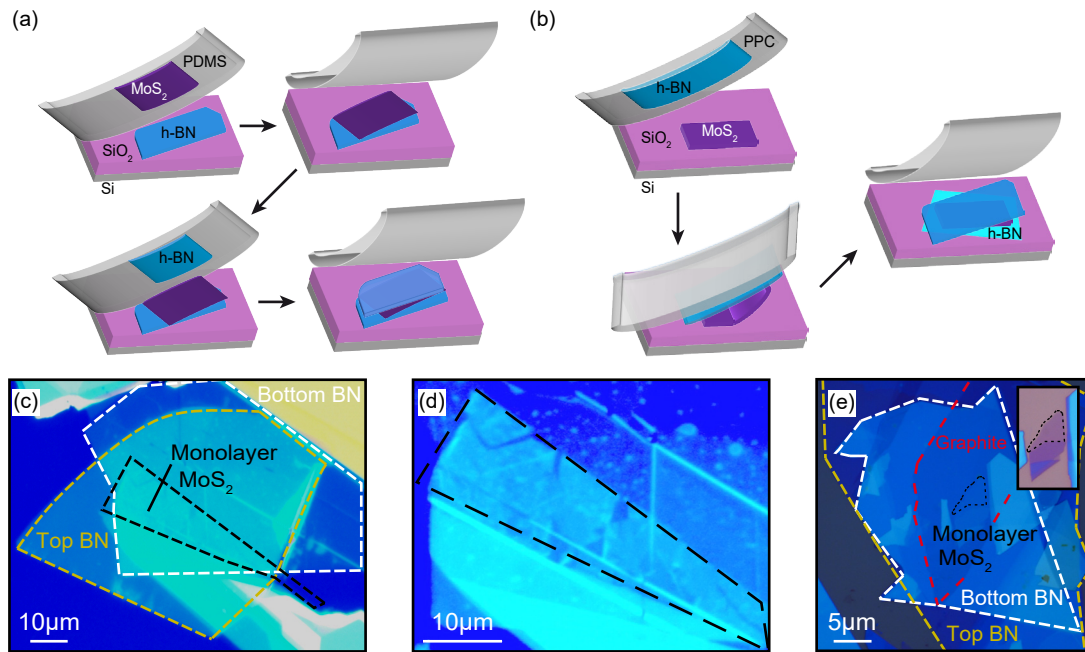


FIG. 1. **Samples preparation and optical images.** Sketches of the two preparation methods used in this work: PDMS stamping (a) and PPC pick-up (b). Optical micrographs of the full stack prepared with PDMS stamping (c). A micrograph focusing on the monolayer MoS_2 regions is shown in (d). The sample prepared using the pick-up technique is shown in (e). The inset presents the region of interest of MoS_2 prior to pickup, i.e. on SiO_2 , in which case the optical contrast is higher.

fact, no CL could be measured so far on a free-standing TMDC single layer. Van der Waals heterostructures can be used to artificially enhance the interaction by encapsulating the active layer into an electronic barrier, very much like semiconductor quantum wells are built: a small band gap material (well) is surrounded by a larger band gap material (barrier). Electron beam irradiation generates hot electrons and holes inside the barrier, which can be arbitrarily thick and hence produce a significant population of hot charge carriers that relax and can be transferred into the low band gap material. This approach has been recently demonstrated with h-BN as a barrier and a single layer TMDC (MoS_2 , WS_2 , WSe_2) as the active layer and the decisive effect of h-BN capping was demonstrated by varying its thickness [16].

While this demonstrates the potential of CL for studying van der Waals heterostructures, several key questions need to be addressed. Encapsulation of the dichalcogenides should in principle allow them to sustain irradiation by the electron beam used for CL characterizations. However, this may only be true if the van der Waals heterostructure is entirely devoid of pollutions, which is usually not the case. Whether in practice CL is harmless (not creating any defect) for the material is hence an open question. Also, so far CL was observed only in limited area of van der Waals heterostructures, and the absence of cathodoluminescence was ascribed to a locally poor contact between the h-BN and TMDC surfaces [16]. In this scenario, it is implied that in that case charge carrier transfer between the barrier and active ma-

terial is inefficient, and hence no exciton can be formed in the latter material. Poor-contact-regions are indeed very common in heterostructures. They correspond to blisters trapped at the interfaces, where contaminants associated with the manipulation of the two-dimensional materials gather [17].

Here we demonstrate that while cathodoluminescence can indeed be non-invasive, the quality of the interfaces between the layers is of critical importance. Conversely, we find that in presence of contaminants at the interfaces cathodoluminescence is quenched. This quenching is also observed in photoluminescence performed after the cathodoluminescence. It is hence not only the signature of an inefficient transfer of electrons and holes, as it was thought, but it proves the creation of crystal defects inside MoS_2 that presumably strongly promote non-radiative exciton recombination. Such defects are detected in Raman spectroscopy. We trace back the origin of defects to a possible chemical reaction between trapped species and the pristine MoS_2 , promoted by the electron beam. We show that the spatial uniformity of the cathodoluminescence response of the heterostructures can be greatly enhanced by reducing the amount of contaminants at interfaces (in particular, the amount of trapped blister), using polypropylene carbonate (PPC) to pick-up and release the different materials of the heterostructure [17].

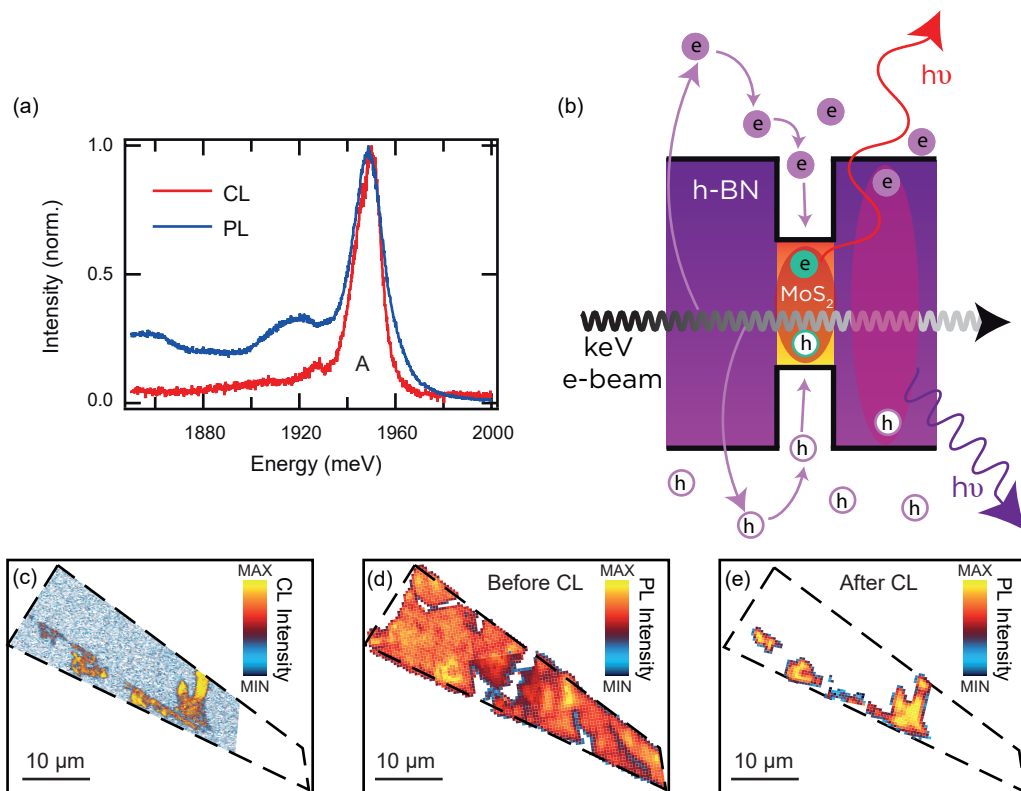


FIG. 2. **Optical characterization using Photoluminescence (PL) and Cathodoluminescence (CL).** A comparison of spatially-resolved spectra at 5 K obtained in PL and CL is presented in (a). The spectra are acquired within less than $1 \mu\text{m}$ of each other. In both cases, the signal is dominated by neutral A-exciton emission. The process of luminescence excitation in a van der Waals heterostructure with an electron beam is presented in (b). The vertical axis represents energy (band diagram). The spatially-resolved integrated CL intensity of the exciton is shown in (c) showing some strong inhomogeneities. This is not the case for the integrated PL intensity measured before CL at room temperature (d). In contrast, integrated PL intensity measured after CL (e) shows a strong inhomogeneity presenting a spatial correlation with the CL mapping.

II. EXPERIMENT

A. Van der Waals heterostructure preparation

The van der Waals heterostructures studied in this work were assembled by two methods (Figure 1a,b). A dry viscoelastic transfer method using polydimethylsiloxane (PDMS) [18], involving two successive stamping, of MoS_2 and h-BN, and a pick-up technique using PPC [17, 19], allowing to directly position a h-BN/ MoS_2 stack, were both employed to encapsulate MoS_2 single-layers between h-BN layers ($\sim 20 \text{ nm}$ -thick). The details are provided in [20]. The optical pictographs of the h-BN/ MoS_2 /h-BN heterostructure are displayed in Figures 1c,d,e. The MoS_2 regions encapsulated between the top and bottom h-BN layers extend across tens of micrometers. We will first focus on the sample prepared using dry viscoelastic stamping (Figure 1a,c,d).

B. Spatially non-uniform cathodoluminescence

Figure 2a shows a typical CL spectrum of single-layer MoS_2 encapsulated in h-BN with the PDMS transfer technique. A strong emission is centered around 1950 meV corresponding to the energy of the recombination of the neutral A-exciton (EX) in MoS_2 . The high energy of the electrons (1 keV) compared to the h-BN band gap allows to excite electrons and holes directly in the h-BN, as witnessed by near band edge luminescence from h-BN [20]. Due to its thickness (top: 18 nm, bottom: 22 nm) a significant number of electrons and holes can be generated in h-BN. Using Monte-Carlo simulations, we have shown that at 1 keV, the absorption length in h-BN is of the order of several tens of nm [20]. When the contact with single-layer MoS_2 is intimate, electrons and holes can be transferred into the latter material which has a much smaller band gap than h-BN. They can then form an EX that will eventually contribute to luminescence when recombining radiatively (A-exciton emission in Figure 2a). Alternatively EX can be formed directly in h-BN and either recombine radiatively or relax into

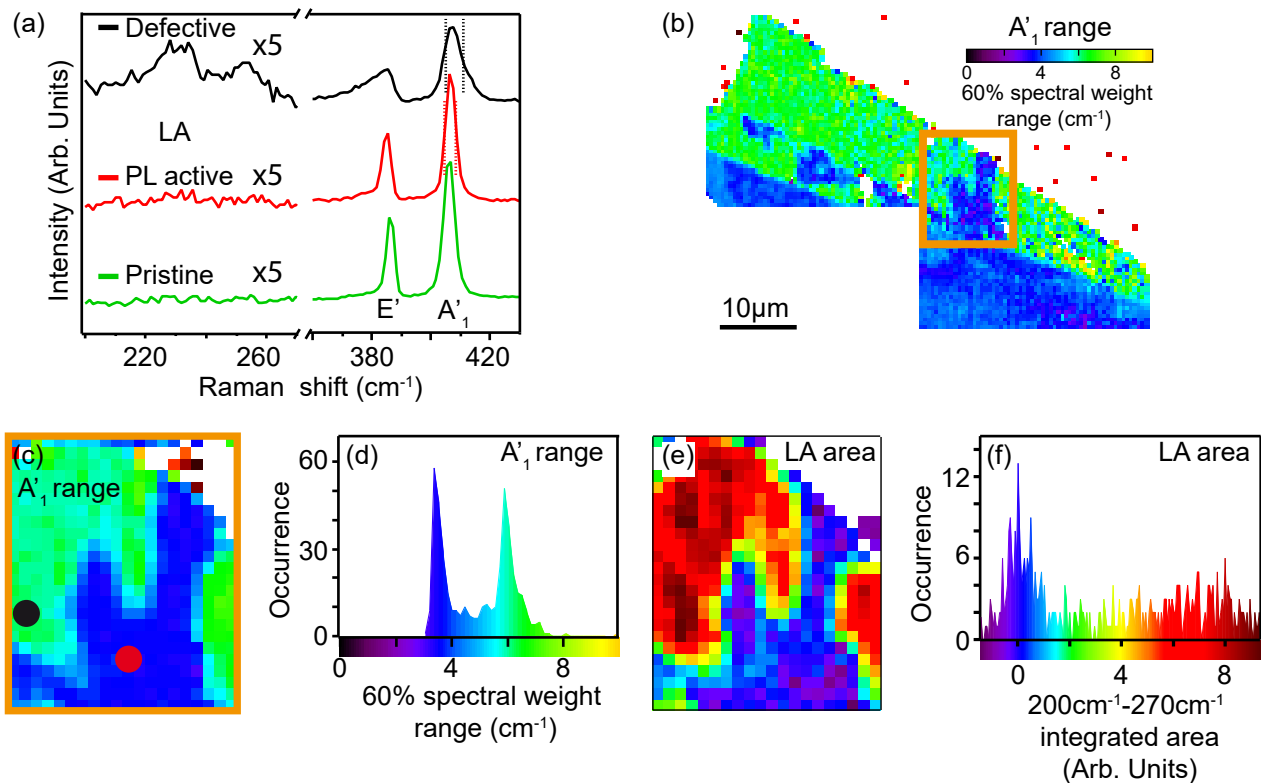


FIG. 3. Raman spectroscopy and spatial mapping of defects. Representative spectra of the different regions are presented in (a): pristine (i.e. before CL), PL active and PL inactive/defective. In addition to a broader A'_1 peak, the defective regions show the emergence of Raman signal around 230 cm^{-1} , which we refer to as the LA area. Such signal in this area is also a signature of defects. The spatially-resolved width of the A'_1 peak is used as a metric for the presence of defects created during the CL experiment, as discussed in the main text. The map shown in (b) presents a strong spatial correlation with both CL and PL maps measured after CL (see Figure 2 c,e). A map with a better spatial resolution of a smaller area is presented in (c). The black and red dots in (c) correspond to the defective and PL active spectra shown in (a), respectively. The histogram of A'_1 widths is presented in (d), in which two peaks attributed to the absence (blue, small width) or presence (green, large width) of defects appear. The color scale meaning in (c) is provided in (d). Note that the exact same color scale is used in (b), (c) and (d) for comparison. (e) shows the spatially-resolved integrated intensity in the LA area (see (a)) at the same position as in (c). The color scale used in (e) is detailed in (f), which shows also the histogram of integrated area for the LA region.

MoS₂. The full CL process is illustrated in Figure 2b.

For comparison with CL, a PL spectrum taken in the same area is presented in Figure 2a. We see that the spectra are very similar proving their common origin, that is radiative recombination (photon emission) of the A exciton of single layer MoS₂. We also want to stress that linewidths are both of the order of 10 meV. It shows that no additional broadening is brought by using a high energy electron beam (in the CL experiment) as the excitation instead of light (PL experiment). This is a very important point, and rather unexpected when referring to literature on CL. Large broadenings, associated with the large number of free charges generated, can indeed often be observed [21]. The lack of broadening demonstrated here is a strong asset for the potential application of CL in mapping properties of van der Waals heterostructures at the nanoscale. We note that the excitation energy used in our PL experiment is not sufficient (unlike in the CL experiment) to excite electrons and holes directly in

h-BN, so we do not observe luminescence from this material in these conditions.

The spatial mapping of the CL intensity measured at 1937 meV (+/- 30 meV) is presented in Figure 2c. Bright and dark regions are observed, in accordance with a previous report [16]. In area of the sample where MoS₂ is not encapsulated with h-BN, no CL is detected; CL is only detected in localized regions of the h-BN-encapsulated MoS₂ [20]. Encapsulation hence appears necessary, because h-BN is the source of electrons and holes that will eventually recombine in MoS₂, but not sufficient. An absence of CL in presence of h-BN is in principle surprising, and this was proposed as an evidence of a poor contact between h-BN and MoS₂ [16]. Atomic force microscopy (AFM) reveals that the corresponding regions show a significant roughness and bubble-like features at the surface [20]. We relate these observations to the presence of blisters which are filled with species (airborne, contaminants from the polymer stamp) and are trapped at the inter-

face between h-BN and MoS₂. The regions exhibiting CL actually appear very flat in AFM [20], with a root mean square roughness in the range of 2 Å, typically several times lower than for other regions. This is indicative of very smooth and flat (buried) interfaces between the materials.

Prior to the measurement of CL maps, we measured PL maps. Figure 2d displays the integrated PL intensity of the EX (sum of neutral and charged excitons contributions, the latter appearing as a low-energy shoulder). Unlike for CL, the MoS₂ layer appears essentially bright, except at locations where it is physically cracked. There are variations of the PL intensity and position which are attributed to local changes (strain, doping, coupling to h-BN) but no quenching. A straightforward interpretation for the only partial spatial correlations between CL and PL maps on one hand, and the clear correlation between dark regions as found with CL and rough regions as found in AFM on the other hand, relates to the effectiveness of electrons and holes transfer at the interface between MoS₂ and h-BN [16]. Indeed, it seems reasonable to expect that the presence of species intercalated in between the two materials, in the form of blisters or in other forms, hinders charge transfers. However, we will now see that other effects prevail.

C. Quenching of luminescence by defects.

While before exposure to the electron beam (used for the CL measurement), PL revealed essentially bright regions, the PL map measured after CL strongly correlates with the CL map, showing the same dark regions (compare Figures 2c,e). It appears thus that the irradiation by the electron beam locally quenches luminescence, regardless of the source of excitation used to observe it. This observation questions the common conception that CL is quenched only by charge transfer hindrance at interfaces; instead it suggests a more invasive effect of the electron beam, damaging MoS₂.

To address this possibility, we analyzed the vibrational properties of MoS₂, before and after electron beam irradiation. We performed Raman spectroscopy measurements at room temperature using an excitation wavelength of 532 nm (see [20]). In the regions showing CL, we always observe Raman spectra with two prominent peaks (Figure 3a), corresponding to the intralayer in-plane E' and out-of-plane A₁' modes [22, 23]. These modes correspond to first-order Raman processes and arise from single phonon at the center of the Brillouin zone. Small deviations from single Lorentzian lineshapes, expected for such processes, can nevertheless be extracted from the experimental spectra of pristine monolayer MoS₂ [20]. Such deviations likely come from the additional contributions of doubly resonant Raman (DRR) processes. For the E' mode, a low energy shoulder was already reported in pristine monolayer MoS₂ [24, 25]. As the E' mode is doubly degenerate, such shoulder could be attributed to

a degeneracy lifting induced by strain or doping [23].

Electron beam irradiation has no effect on the spectra in regions showing CL. In regions showing no CL, on the contrary, electron irradiation has strong effects. Prior to irradiation, we also exclusively observe signatures of the E' and A₁' modes. After irradiation, the corresponding peaks appear broader and show some structure, and new modes are found at lower frequency, around 230 cm⁻¹ (Figure 3a). They form a band, that is referred to as LA(M) in the literature [24–26]. While an exact fitting procedure would require a full theoretical description of Raman intensities including DRR contributions, such complex spectra have been fitted with a sum of Lorentzian in the literature [24, 25, 27]. Within this approximation, we can associate a peak with a given phonon in the band structure. The band around 230 cm⁻¹ was shown to be defect-induced. A detailed, excitation energy dependent study, showed that this band arises from DRR processes involving one phonon; elastic scattering by a defect ensuring momentum conservation [25]. This band has three main contributions: a van Hove singularity in the phonon density of states between the K and M points, the LA branch in vicinity of the M point (LA(M)) and the LA branch in the vicinity of the K point (LA(K)) [25]. In addition we observe another defect-activated contribution near 250 cm⁻¹ which was also reported by Mignuzzi et al. [24] but left unassigned.

We now discuss the evolution of the spectra in the vicinity of the E' and A₁' modes upon electron irradiation in regions showing no CL. Defect-induced contributions are visible close to both E' and A₁'. They have been attributed to phonons in the vicinity of the M points on the TO, LO and ZO branches [24]. We have quantitatively analyzed the weight of those defect-induced contributions in order to spatially map the occurrence of defects. The details of the analysis are presented in [20]. In Figure 3b-d, we image the presence of defects in the sample using this approach. We see that there is a remarkable spatial correlation between defect mapping using Raman spectroscopy and CL/PL mapping (Figure 2c,e). In addition, to strengthen the validity of our method, we perform a similar defect-mapping analysis based on the LA(M) band (Figure 3e,f). We see here that regions with a measurable contribution around 230 cm⁻¹ are the ones that are defective and thus CL/PL inactive. The quenching of luminescence by electron beam irradiation is hence related to defect creation in MoS₂.

D. Strong luminescence in case of clean interfaces

We now turn our attention to the origin of defects creation and the possibility to locate regions with an intimate contact between h-BN and MoS₂ prior to CL and the creation of defects.

In Figure 4, we present a doping analysis of the sample realized prior to CL. We used Raman spectroscopy and tracked local shifts in the positions of the E' and A₁'

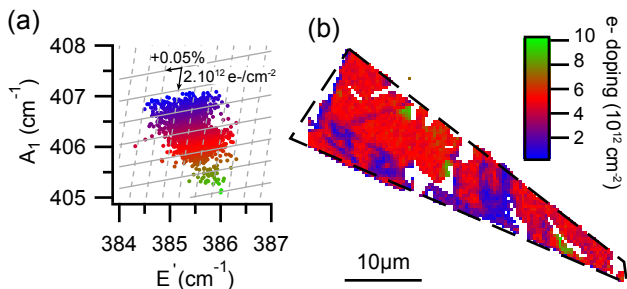


FIG. 4. **Spatially resolved interlayer contact mapping through doping analysis before cathodoluminescence.** In (a) the energy shifts of both the E' and A_1 Raman modes acquired on the whole sample are presented. Their positions are both dependent on strain and doping (strain and doping axis are represented by non-orthogonal vectors in this space). The spatially resolved doping (b) shows that region that are tightly coupled to h-BN present less electron doping. The colorscale in (a) represents the relative electron doping as in (b).

modes (see the distribution in Figure 4a) to retrieve the spatial dependence of doping (Figure 4b). This is possible by discriminating the effect of strain, which alters the energy of the two Raman modes in a different way doping does. This kind of analysis was already outlined in the literature on monolayer MoS_2 [28, 29]. We observe that regions exhibiting CL have a smaller n doping, by typically several 10^{12} cm^{-2} , compared to regions presenting no CL. Noting that the analysis concerns measurements acquired before the CL measurements, *i.e.* prior to electron beam irradiation, we conclude that regions tightly coupled to h-BN are less electron doped than regions with a loose coupling. While the presence of an h-BN substrate has been shown to reduce electron doping compared to SiO_2 [29], in which case doping is created by charge traps at the interface [30], the exact mechanism at stake here to explain the coupling-dependent doping is more complex. Species trapped at the interface and gathered in the form of blisters are likely candidates to explain the observed n doping. But the effect of, for instance, oxygen, that was present during the sample preparation in ambient atmosphere is still debated and might depend on the substrate [31]. While the identification of the exact mechanism responsible for the observed reduction of n doping in tightly coupled h-BN/ MoS_2 regions will require further investigations, it is nevertheless possible to identify those regions using Raman spectroscopy as shown in Figure 4b.

We note that we could not observe low-energy interlayer vibrational modes in Raman spectroscopy, that could be another signature, besides electronic doping level, of an intimate contact between MoS_2 and h-BN. Although such modes have indeed been observed in between TMDC layers [32–34], we are not aware of any reports of such modes between h-BN and MoS_2 .

E. Cause of defect creation by electron-beam irradiation

Having established that defects are induced by irradiation by the electron-beam used during the cathodoluminescence measurements, and that these defects yield prominently to non-radiative recombination of EXs, we now discuss their possible origin. We stress that all the signatures of the defects that we have presented here differentiate them from the ones that can be induced in h-BN upon electron irradiation to create single photon emitters [35]. Besides being created at much lower energy (1 keV here vs 15 keV in Ref. [35]), they do not show any optical activity and present a Raman signature. Regarding their nature, the energy of the electron beam is well below the threshold for knock-on displacement of individual S or Mo atoms in MoS_2 , which is several 10 keV and few 100 keV respectively [36–38]. This effect can hence be ruled out as a source of defects in MoS_2 here. The dose in a typical CL experiment is estimated to be of the order of tens of mC/cm^2 (tens of electrons/ nm^2) which is several order of magnitude below the dose for typical transmission electron microscopy experiments [39].

Another possible origin, also related to the electron beam, is a chemical reaction rather than a scattering effect. MoS_2 has indeed been shown to act as an active catalyst for hydrogen evolution reactions (HER). Following a Volmer-Heyrovsky type of mechanism, the electron beam used in our experiment might thus promote a multi-step chemical process proceeding for instance through the formation of MoH adducts [40, 41]. In our case, it is reasonable to assume that the blisters located at the MoS_2 /h-BN interface contain airborne species such as water and/or oxygen that naturally adsorb on surfaces in ambient pressure conditions and will be trapped during the assembly of the heterostructure. It has been shown that the presence of oxygen can enhance catalytic reactions in MoS_2 [42]. The trapped blisters may hence behave as aqueous solution micro- or nano-reactors. The chemical environment of the MoS_2 atoms bonded to hydrogen is different from that of the pristine material, which may allow the electron scattering processes needed to activate the above-discussed defect-induced Raman signatures. The exact nature of the defects is still an open question at this point and will require further studies. We note that the buried character of the interface makes traditional chemically sensitive surface probes (X-ray photoemission spectroscopy, local microscopy) not suited to such investigations.

F. Cathodoluminescence with improved spatial inhomogeneity

The nanometer-scale spatial resolution of cathodoluminescence, as implemented in a scanning electron microscope, together with the tendency for defect formation under electron-beam irradiation of the blisters, represents

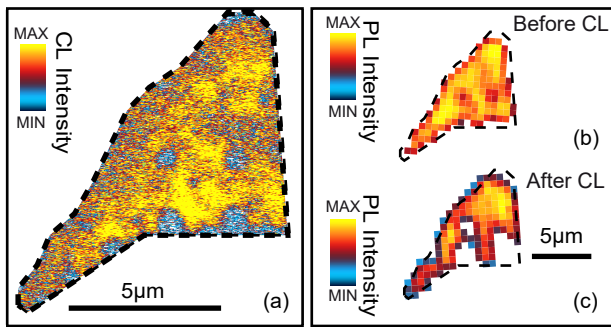


FIG. 5. **Uniform coupling and properties using PPC pick-up preparation technique.** The CL signal measured at 5 K in the sample prepared by the pick-up technique is uniform across the flake. We observe sub-micrometric regions with reduced CL signal (blue) that are (air) bubbles. The integrated PL intensity measured at room temperature before (b) and after (c) CL shows a limited evolution compared to the sample made using PDMS. The absence of signal is limited to small regions and is caused by (air) bubbles created in the fabrication process.

a high resolution probe of the quality of the MoS₂/h-BN contact. Employing this probe allowed us to conclude that the PDMS stamping technique does not yield extended clean contacts beyond a few μm .

We then used an alternative transfer technique based on pick-up and drop-down with a PPC stamp. This technique allows to reduce the amount of blisters trapped at the interface [17]. Figure 1e shows an optical micrograph of such a h-BN/MoS₂/h-BN heterostructure. The CL map of this sample is much more uniform than that of heterostructures prepared with a PDMS stamping as expected from the more uniform contact (compare Figures 2c and 5a). Also PL measured before and after CL is very similar (see Figures 5b,c) in contrast to the sample prepared using PDMS (see Figures 2d,e). It shows that electron beam irradiation in CL has not created extended defective regions because of the uniform coupling in that sample. The complete suppression of bubbles should allow further optimization of the process [17].

III. CONCLUSIONS

Our work shows that clean interfaces between TMDC and h-BN are necessary to observe an enhancement of cathodoluminescence. Under that condition, cathodoluminescence can be used as a powerful non-invasive technique to study optical properties at the nanoscale. On the contrary, when species are trapped at the interface, not only is the luminescence quenched but defects are induced by the electron beam. We ascribe the formation of defects to an electron-promoted chemical reaction. We find that the cleanliness of the interface is of superior spatial uniformity, and the generation of defects is greatly avoided, when a pick-up/drop-down assembly technique with PPC is employed.

The narrow emission linewidth observed in CL and the localized electron beam should allow to spatially map strain and doping profiles with nanometer resolution by analyzing the exciton peak position and the presence of trion emission. CL could also be used to study with unprecedented spatial resolution single photon emitters that were reported in several TMDCs [43–47].

ACKNOWLEDGMENTS

This work was supported by the French National Research Agency (ANR) in the framework of the J2D project (ANR-15-CE24-0017), the 2DTransformers project under OH-RISQUE program (ANR-14-OHRI-0004), and of the "Investissements d'avenir" program (ANR-15-IDEX-02). J.R. acknowledges support from Grenoble Alpes University community (AGIR-2016-SUGRAF). G.N., A. B. and V.B. thank support from CEFIPRA. Growth of hexagonal boron nitride crystals was supported by the Elemental Strategy Initiative conducted by the MEXT, Japan and the CREST (JP-MJCR15F3), JST. We thank the Nanofab group at Institut Néel for help with van der Waals heterostructures preparation setup. We thank C. Bucher for fruitful discussions.

-
- [1] K. S. Novoselov, A. Mishchenko, A. Carvalho, and A. H. Castro Neto, 2D mater. and van der waals heterostructures, *Science* **353**, aac9439 (2016).
 - [2] P. Rivera, J. R. Schaibley, A. M. Jones, J. S. Ross, S. Wu, G. Aivazian, P. Klement, K. Seyler, G. Clark, N. J. Ghimire, J. Yan, D. G. Mandrus, W. Yao, and X. Xu, Observation of long-lived interlayer excitons in monolayer MoSe₂ – WSe₂ heterostructures, *Nat. Commun.* **6**, 6242 (2015).
 - [3] P. Rivera, K. L. Seyler, H. Yu, J. R. Schaibley, J. Yan, D. G. Mandrus, W. Yao, and X. Xu, Valley-polarized exciton dynamics in a 2D semiconductor heterostructure, *Science* **351**, 688 (2016).
 - [4] C. Jin, J. Kim, J. Suh, Z. Shi, B. Chen, X. Fan, M. Kam, K. Watanabe, T. Taniguchi, S. Tongay, A. Zettl, J. Wu, and F. Wang, Interlayer electron-phonon coupling in WSe₂/hBN heterostructures, *Nat. Phys.* **13**, 127 (2016).
 - [5] H. Li, J.-B. Wu, F. Ran, M.-L. Lin, X.-L. Liu, Y. Zhao, X. Lu, Q. Xiong, J. Zhang, W. Huang, H. Zhang, and P.-H. Tan, Interfacial interactions in van der waals heterostructures of mos₂ and graphene, *ACS Nano* **11**, 11714 (2017).
 - [6] C. H. Lui, Z. Ye, C. Ji, K.-C. Chiu, C.-T. Chou, T. I. Andersen, C. Means-Shively, H. Anderson, J.-M. Wu, T. Kidd, Y.-H. Lee, and R. He, Observation of interlayer phonon modes in van der waals heterostructures, *Phys.*

- Rev. B **91**, 165403 (2015).
- [7] J. Kang, J. Li, S.-S. Li, J.-B. Xia, and L.-W. Wang, Electronic structural moiré pattern effects on MoS₂/MoSe₂ 2D heterostructures, *Nano Lett.* **13**, 5485 (2013).
- [8] F. Wu, T. Lovorn, and A. H. MacDonald, Topological exciton bands in moiré heterojunctions, *Phys. Rev. Lett.* **118**, 147401 (2017).
- [9] Y. Pan, S. Fölsch, Y. Nie, D. Waters, Y.-C. Lin, B. Jarriwala, K. Zhang, K. Cho, J. A. Robinson, and R. M. Feenstra, Quantum-confined electronic states arising from the moiré pattern of MoS₂-WSe₂ heterobilayers, *Nano Lett.* **18**, 1849 (2018).
- [10] S. Huang, L. Liang, X. Ling, A. A. Piretzky, D. B. Gehegan, B. G. Sumpter, J. Kong, V. Meunier, and M. S. Dresselhaus, Low-frequency interlayer raman modes to probe interface of twisted bilayer mos₂, *Nano Lett.* **16**, 1435 (2016).
- [11] K. Tran, G. Moody, F. Wu, X. Lu, J. Choi, K. Kim, A. Rai, D. A. Sanchez, J. Quan, A. Singh, J. Embrey, A. Zepeda, M. Campbell, T. Autry, T. Taniguchi, K. Watanabe, N. Lu, S. K. Banerjee, K. L. Silverman, S. Kim, E. Tutuc, L. Yang, A. H. MacDonald, and X. Li, Evidence for moire excitons in van der waals heterostructures, *Nature* **567**, 71 (2019).
- [12] A. P. Rooney, A. Kozikov, A. N. Rudenko, E. Prestat, M. J. Hamer, F. Withers, Y. Cao, K. S. Novoselov, M. I. Katsnelson, R. Gorbachev, and S. J. Haigh, Observing imperfection in atomic interfaces for van der waals heterostructures, *Nano Lett.* **17**, 5222 (2017).
- [13] H.-P. Komsa, J. Kotakoski, S. Kurasch, O. Lehtinen, U. Kaiser, and A. V. Krasheninnikov, Two-dimensional transition metal dichalcogenides under electron irradiation: Defect production and doping, *Phys. Rev. Lett.* **109**, 035503 (2012).
- [14] E. M. Alexeev, A. Catanzaro, O. V. Skrypkina, P. K. Nayak, S. Ahn, S. Pak, J. Lee, J. I. Sohn, K. S. Novoselov, H. S. Shin, and A. I. Tartakovskii, Imaging of interlayer coupling in van der waals heterostructures using a bright-field optical microscope, *Nano Lett.* **17**, 5342 (2017).
- [15] M. Kulig, J. Zipfel, P. Nagler, S. Blanter, C. Schüller, T. Korn, N. Paradiso, M. M. Glazov, and A. Chernikov, Exciton diffusion and halo effects in monolayer semiconductors, *Phys. Rev. Lett.* **120**, 207401 (2018).
- [16] S. Zheng, J.-K. So, F. Liu, Z. Liu, N. Zheludev, and H. J. Fan, Giant enhancement of cathodoluminescence of monolayer transitional metal dichalcogenides semiconductors, *Nano Lett.* **17**, 6475 (2017).
- [17] F. Pizzocchero, L. Gammelgaard, B. S. Jessen, J. M. Caridad, L. Wang, J. Hone, P. Bøggild, and T. J. Booth, The hot pick-up technique for batch assembly of van der waals heterostructures, *Nat. Commun.* **7**, 11894 (2016).
- [18] A. Castellanos-Gomez, M. Buscema, R. Molenaar, V. Singh, L. Janssen, H. S. J. van der Zant, and G. A. Steele, Deterministic transfer of two-dimensional materials by all-dry viscoelastic stamping, *2D Mater.* **1**, 011002 (2014).
- [19] L. Wang, I. Meric, P. Y. Huang, Q. Gao, Y. Gao, H. Tran, T. Taniguchi, K. Watanabe, L. M. Campos, D. A. Muller, J. Guo, P. Kim, J. Hone, K. L. Shepard, and C. R. Dean, One-dimensional electrical contact to a two-dimensional material, *Science* **342**, 614 (2013).
- [20] See Supplemental Material for details of the Raman analysis and fitting procedure to analyze the occurrence of defects, Monte-Carlo simulation of the electron-beam/sample interaction, atomic force microscopy characterization, CL spectra of h-BN luminescence and non-encapsulated MoS₂.
- [21] J. Rodriguez-Viejo, K. F. Jensen, H. Mattoussi, J. Michel, B. O. Dabbousi, and M. G. Bawendi, Cathodoluminescence and photoluminescence of highly luminescent CdSe/ZnS quantum dot composites, *Appl. Phys. Lett.* **70**, 2132 (1997).
- [22] C. Lee, H. Yan, L. E. Brus, T. F. Heinz, J. Hone, and S. Ryu, Anomalous lattice vibrations of single- and few-layer MoS₂, *ACS Nano* **4**, 2695 (2010).
- [23] A. Molina-Sánchez and L. Wirtz, Phonons in single-layer and few-layer MoS₂ and WS₂, *Phys. Rev. B* **84**, 155413 (2011).
- [24] S. Mignuzzi, A. J. Pollard, N. Bonini, B. Brennan, I. S. Gilmore, M. A. Pimenta, D. Richards, and D. Roy, Effect of disorder on raman scattering of single-layer MoS₂, *Phys. Rev. B* **91**, 195411 (2015).
- [25] B. R. Carvalho, Y. Wang, S. Mignuzzi, D. Roy, M. Terrones, C. Fantini, V. H. Crespi, M. L. M., and M. A. Pimenta, Intervalley scattering by acoustic phonons in two-dimensional MoS₂ revealed by double-resonance raman spectroscopy, *Nat. Commun.* **8**, 14670 (2017).
- [26] G. L. Frey, R. Tenne, M. J. Matthews, M. S. Dresselhaus, and G. Dresselhaus, Raman and resonance raman investigation of MoS₂ nanoparticles, *Phys. Rev. B* **60**, 2883 (1999).
- [27] T. Livneh and J. E. Spanier, A comprehensive multiphonon spectral analysis in MoS₂, *2D Mater.* **2**, 035003 (2015).
- [28] A. Michail, N. Delikoukos, J. Parthenios, C. Galiotis, and K. Papagelis, Optical detection of strain and doping inhomogeneities in single layer MoS₂, *Appl. Phys. Lett.* **108**, 173102 (2016).
- [29] S. Dubey, S. Lisi, G. Nayak, F. Herzig, V.-D. Nguyen, T. Le Quang, V. Cherkov, C. González, Y. J. Dappe, K. Watanabe, T. Taniguchi, L. Magaud, P. Mallet, J.-Y. Veuillen, R. Arenal, L. Marty, J. Renard, N. Bendiab, J. Coraux, and V. Bouchiat, Weakly trapped, charged, and free excitons in single-layer MoS₂ in the presence of defects, strain, and charged impurities, *ACS Nano* **11**, 11206 (2017).
- [30] C.-P. Lu, G. Li, J. Mao, L.-M. Wang, and E. Y. Andrei, Bandgap, mid-gap states, and gating effects in MoS₂, *Nano Lett.* **14**, 4628 (2014).
- [31] L. Qi, Y. Wang, L. Shen, and Y. Wu, Chemisorption-induced n-doping of MoS₂ by oxygen, *Appl. Phys. Lett.* **108**, 063103 (2016).
- [32] X. Zhang, W. P. Han, J. B. Wu, S. Milana, Y. Lu, Q. Q. Li, A. C. Ferrari, and P. H. Tan, Raman spectroscopy of shear and layer breathing modes in multilayer MoS₂, *Phys. Rev. B* **87**, 115413 (2013).
- [33] M. O'Brien, N. McEvoy, D. Hanlon, T. Hallam, J. N. Coleman, and G. S. Duesberg, Mapping of low-frequency raman modes in cvd-grown transition metal dichalcogenides: Layer number, stacking orientation and resonant effects, *Sci. Rep.* **6**, 19476 (2016).
- [34] L. Liang, J. Zhang, B. G. Sumpter, Q.-H. Tan, P.-H. Tan, and V. Meunier, Low-frequency shear and layer-breathing modes in raman scattering of two-dimensional materials, *ACS Nano* **11**, 11777 (2017).
- [35] T. T. Tran, C. Elbadawi, D. Totonjian, C. J. Lobo, G. Grosso, H. Moon, D. R. Englund, M. J. Ford, I. Aharonovich, and M. Toth, Robust multicolor single

- photon emission from point defects in hexagonal boron nitride, *ACS Nano* **10**, 7331 (2016).
- [36] R. Zan, Q. M. Ramasse, R. Jalil, T. Georgiou, U. Bangert, and K. S. Novoselov, Control of radiation damage in MoS₂ by graphene encapsulation, *ACS Nano* **7**, 10167 (2013).
- [37] G. Algara-Siller, S. Kurasch, M. Sedighi, O. Lehtinen, and U. Kaiser, The pristine atomic structure of MoS₂ monolayer protected from electron radiation damage by graphene, *Appl. Phys. Lett.* **103**, 203107 (2013).
- [38] A. Garcia, A. M. Raya, M. M. Mariscal, R. Esparza, M. Herrera, S. I. Molina, G. Scavello, P. L. Galindo, M. Jose-Yacaman, and A. Ponce, Analysis of electron beam damage of exfoliated MoS₂ sheets and quantitative haadf-stem imaging, *Ultramicroscopy* **146**, 33 (2014).
- [39] W. M. Parkin, A. Balan, L. Liang, P. M. Das, M. Lamparski, C. H. Naylor, J. A. Rodríguez-Manzo, A. T. C. Johnson, V. Meunier, and M. Drndić, Raman shifts in electron-irradiated monolayer MoS₂, *ACS Nano* **10**, 4134 (2016).
- [40] L. Liao, J. Zhu, X. Bian, L. Zhu, M. D. Scanlon, H. H. Girault, and B. Liu, MoS₂ formed on mesoporous graphene as a highly active catalyst for hydrogen evolution, *Adv. Func. Mater.* **23**, 5326 (2013).
- [41] J. Xie, H. Zhang, S. Li, R. Wang, X. Sun, M. Zhou, J. Zhou, X. W. D. Lou, and Y. Xie, Defect-rich MoS₂ ultrathin nanosheets with additional active edge sites for enhanced electrocatalytic hydrogen evolution, *Adv. Mater.* **25**, 5807 (2013).
- [42] E. Parzinger, B. Miller, B. Blaschke, J. A. Garrido, J. W. Ager, A. Holleitner, and U. Wurstbauer, Photocatalytic stability of single- and few-layer mos₂, *ACS Nano* **9**, 11302 (2015).
- [43] P. Tonndorf, R. Schmidt, R. Schneider, J. Kern, M. Buscema, G. A. Steele, A. Castellanos-Gomez, H. S. J. van der Zant, S. M. de Vasconcellos, and R. Bratschkitsch, Single-photon emission from localized excitons in an atomically thin semiconductor, *Optica* **2**, 347 (2015).
- [44] Y.-M. He, G. Clark, J. R. Schaibley, Y. He, M.-C. Chen, Y.-J. Wei, X. Ding, Q. Zhang, W. Yao, X. Xu, C.-Y. Lu, and J.-W. Pan, Single quantum emitters in monolayer semiconductors, *Nat. Nanotechnol.* **10**, 497 (2015).
- [45] M. Koperski, K. Nogajewski, A. Arora, V. Cherkez, P. Mallet, J.-Y. Veuillen, J. Marcus, P. Kossacki, and M. Potemski, Single photon emitters in exfoliated WSe₂ structures, *Nat. Nanotechnol.* **10**, 503 (2015).
- [46] A. Srivastava, M. Sidler, A. V. Allain, D. S. Lembke, A. Kis, and A. Imamoglu, Optically active quantum dots in monolayer WSe₂, *Nat. Nanotechnol.* **10**, 491 (2015).
- [47] S. Kumar, A. Kaczmarczyk, and B. D. Gerardot, Strain-induced spatial and spectral isolation of quantum emitters in mono- and bilayer WSe₂, *Nano Lett.* **15**, 7567 (2015).