

Native Ion Mobility Mass Spectrometry: when Gas Phase Ion Structures Depend on the Electrospray Charging Process

Nina Khristenko,¹ Jussara Amato,² Sandrine Livet,¹ Bruno Pagano,² Antonio Randazzo,² Valérie Gabelica^{1*}

¹ Laboratoire Acides Nucléiques: Régulations Naturelle et Artificielle, Université de Bordeaux, Inserm & CNRS (ARNA, U1212, UMR5320), IECB, 2 rue Robert Escarpit, 33607 Pessac, France.

² Department of Pharmacy, University of Naples Federico II, Naples, Italy.

Corresponding author: v.gabelica@iecb.u-bordeaux.fr

Supplementary Figures

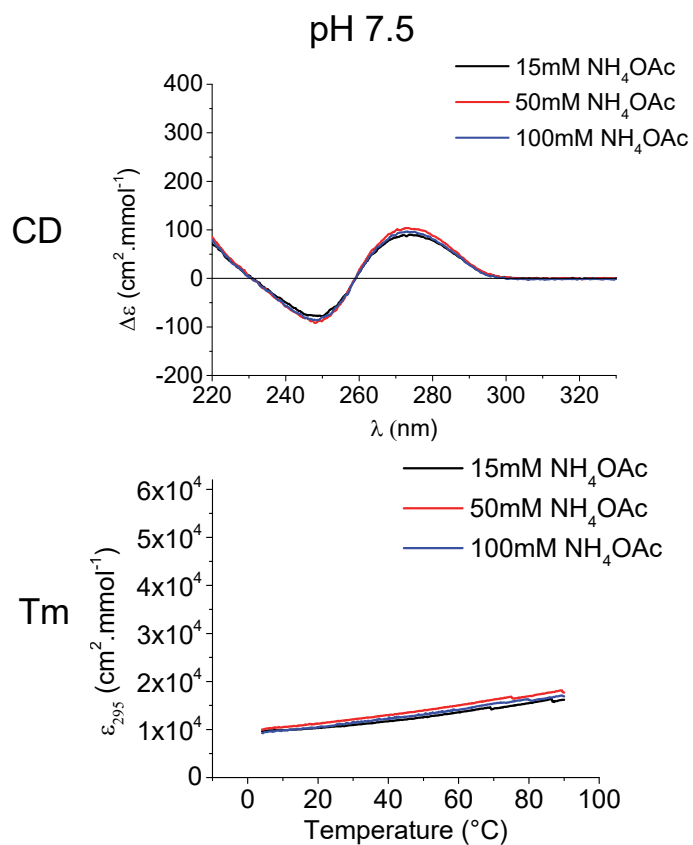


Figure S1. Top panel: the CD spectra of 21CTC at pH 7.5 in 15, 50 and 100 mM of NH_4OAc . Bottom panel the Tm curves of 21CTC at pH 7.5 in 15, 50 and 100 mM of NH_4OAc .

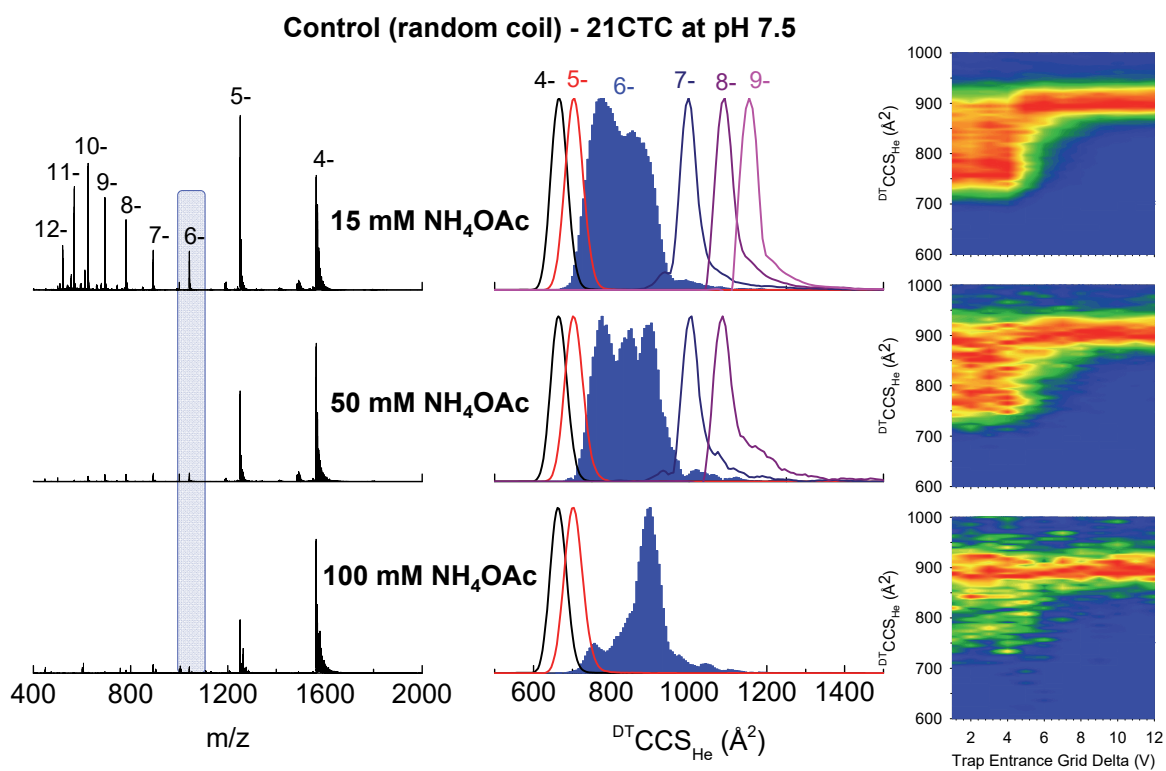


Figure S2. Mass spectra acquired for random coil 21CTC at pH 7.5 in 15, 50 and 100 mM of NH_4OAc . The CCS distributions for ions with different charge states of 21CTC at pH 7.5 in 15, 50 and 100 mM of NH_4OAc . The heatmaps show the collisional induced unfolding (CIU) for charge states 6- of 21CTC at pH 7.5 in 15, 50 and 100 mM of NH_4OAc .

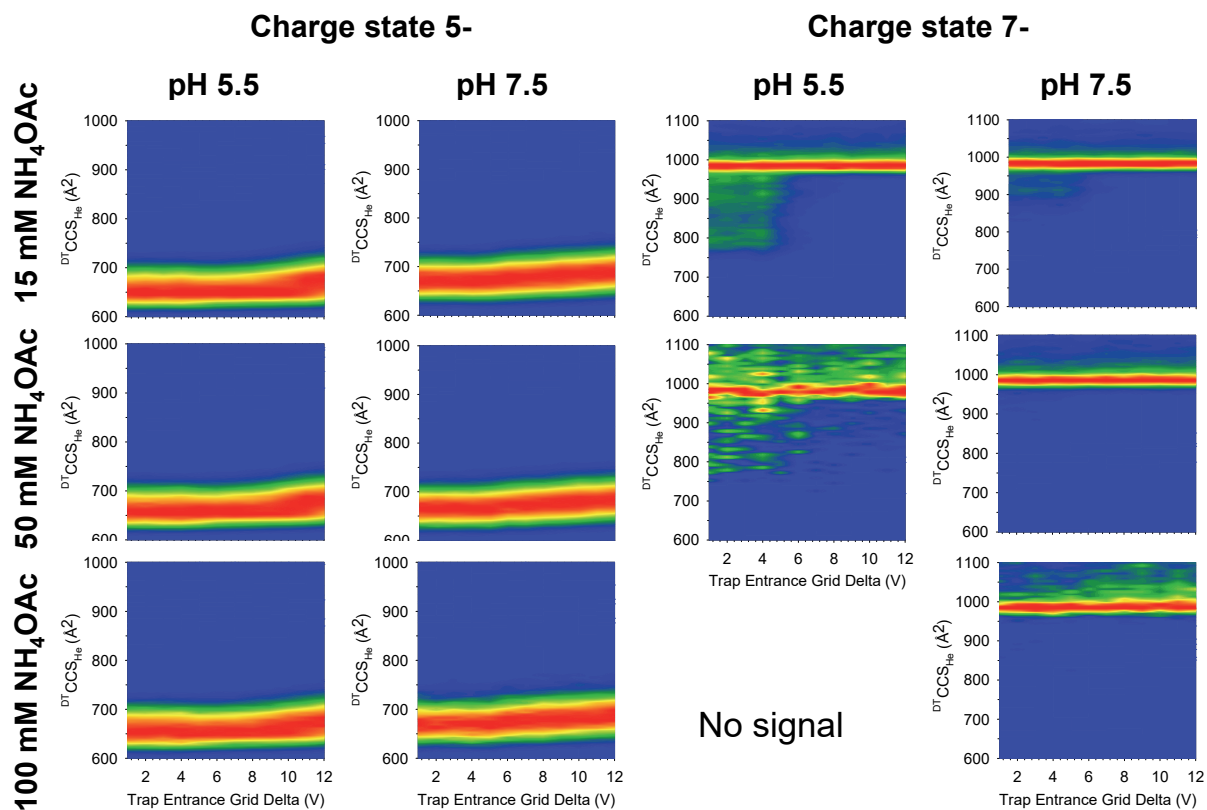


Figure S3. Heatmaps showing the effect of pre-IMS activation on the CCS distributions of charge states 5- and 7- of i-motif (21C at pH 5.5) and random coil (21C at pH 7.5) structures in 15, 50 and 100 mM of NH_4OAc .

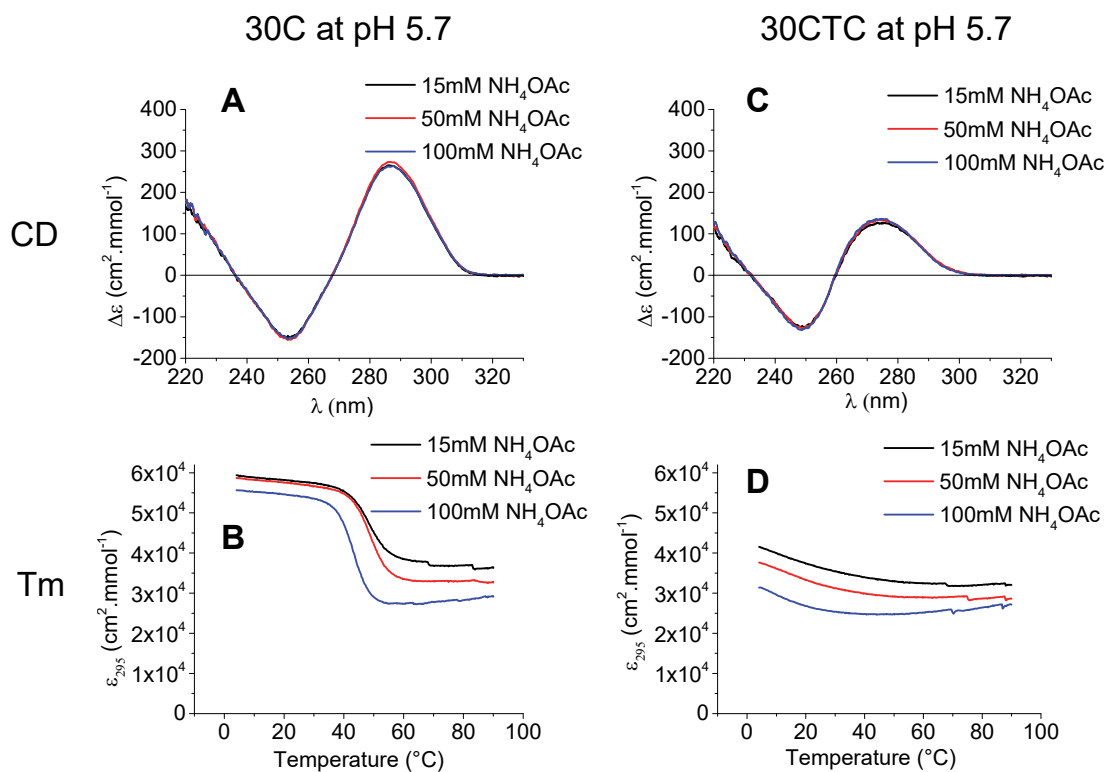


Figure S4. The CD spectra of 30TAACCC (A) and 30TAACTC (C) at pH 5.5 in 15, 50 and 100 mM of NH_4OAc . The Tm curves of 21C 30TAACCC (B) and 30TAACTC (D) at pH 5.5 in 15, 50 and 100 mM of NH_4OAc .

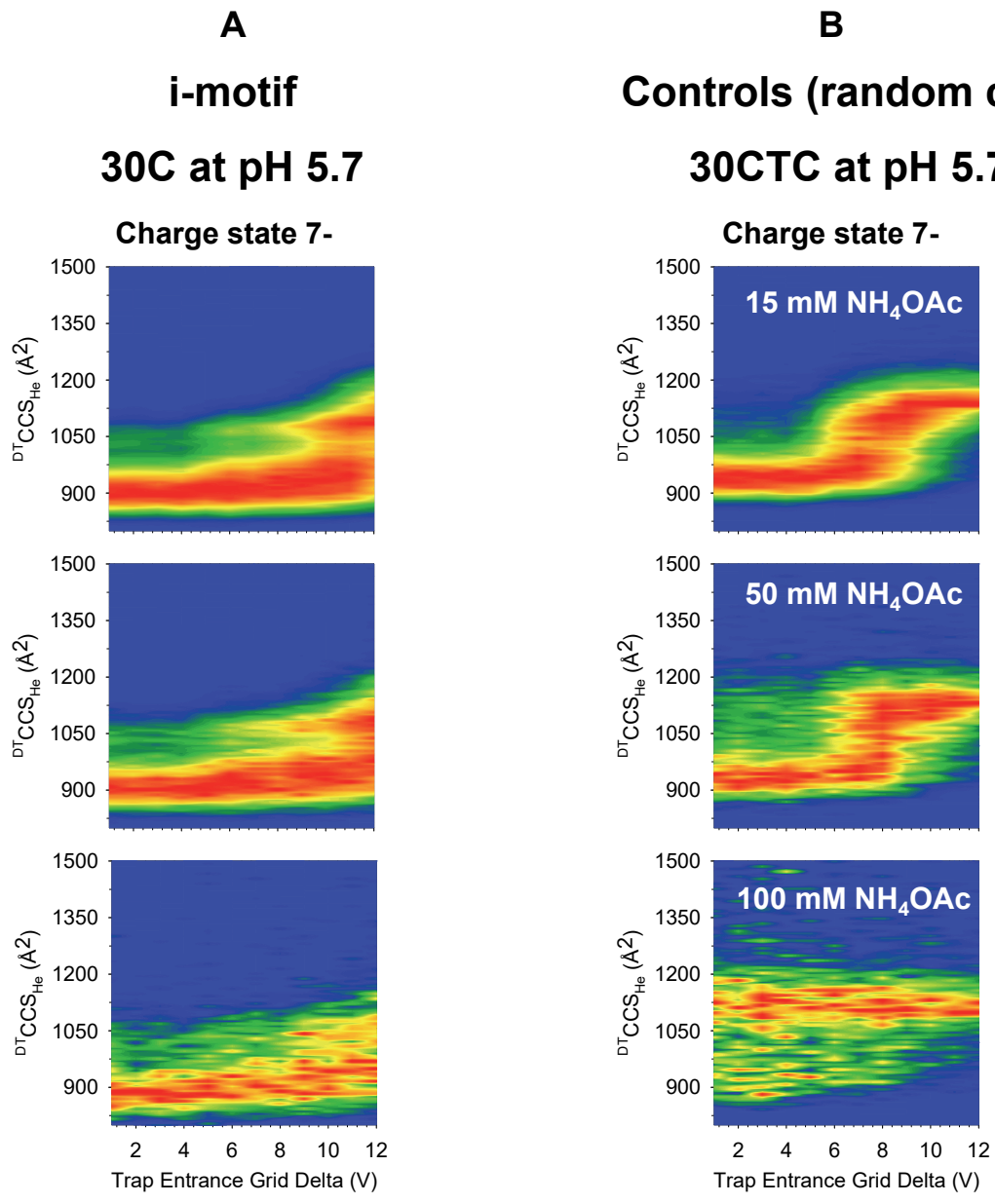


Figure S5. The heatmaps show the collisional induced unfolding (CIU) for charge states 7- of i-motif structures 30C (**A**) and its control 30CTC (**B**) at pH 5.5 in 15, 50 and 100 mM of NH₄OAc.