



HAL
open science

Latin America's collections of ImaGEO consortium

Caroline Abela, Julien Baudry, Hadrossek Christine, Shadia Kilouchi, Malika Madelin, Christine Maury, Bruno Morandière

► To cite this version:

Caroline Abela, Julien Baudry, Hadrossek Christine, Shadia Kilouchi, Malika Madelin, et al.. Latin America's collections of ImaGEO consortium: Digitalized maps and field photographs. Latin American Challenges in the 21st Century: Societies in Motion (Desafíos latinoamericanos en el siglo XXI: Sociedades en movimiento)., Jun 2017, Goteborg, Sweden. , 2017. hal-02358038

HAL Id: hal-02358038

<https://hal.science/hal-02358038>

Submitted on 11 Nov 2019

HAL is a multi-disciplinary open access archive for the deposit and dissemination of scientific research documents, whether they are published or not. The documents may come from teaching and research institutions in France or abroad, or from public or private research centers.

L'archive ouverte pluridisciplinaire **HAL**, est destinée au dépôt et à la diffusion de documents scientifiques de niveau recherche, publiés ou non, émanant des établissements d'enseignement et de recherche français ou étrangers, des laboratoires publics ou privés.

Latin America's collections of ImaGEO consortium

Digitalized maps and field photographs

Our goals

Making available collections of cartographic and photographic data



Who are we ?

A consortium of research laboratories and libraries of Huma Num Infrastructure -CNRS – France

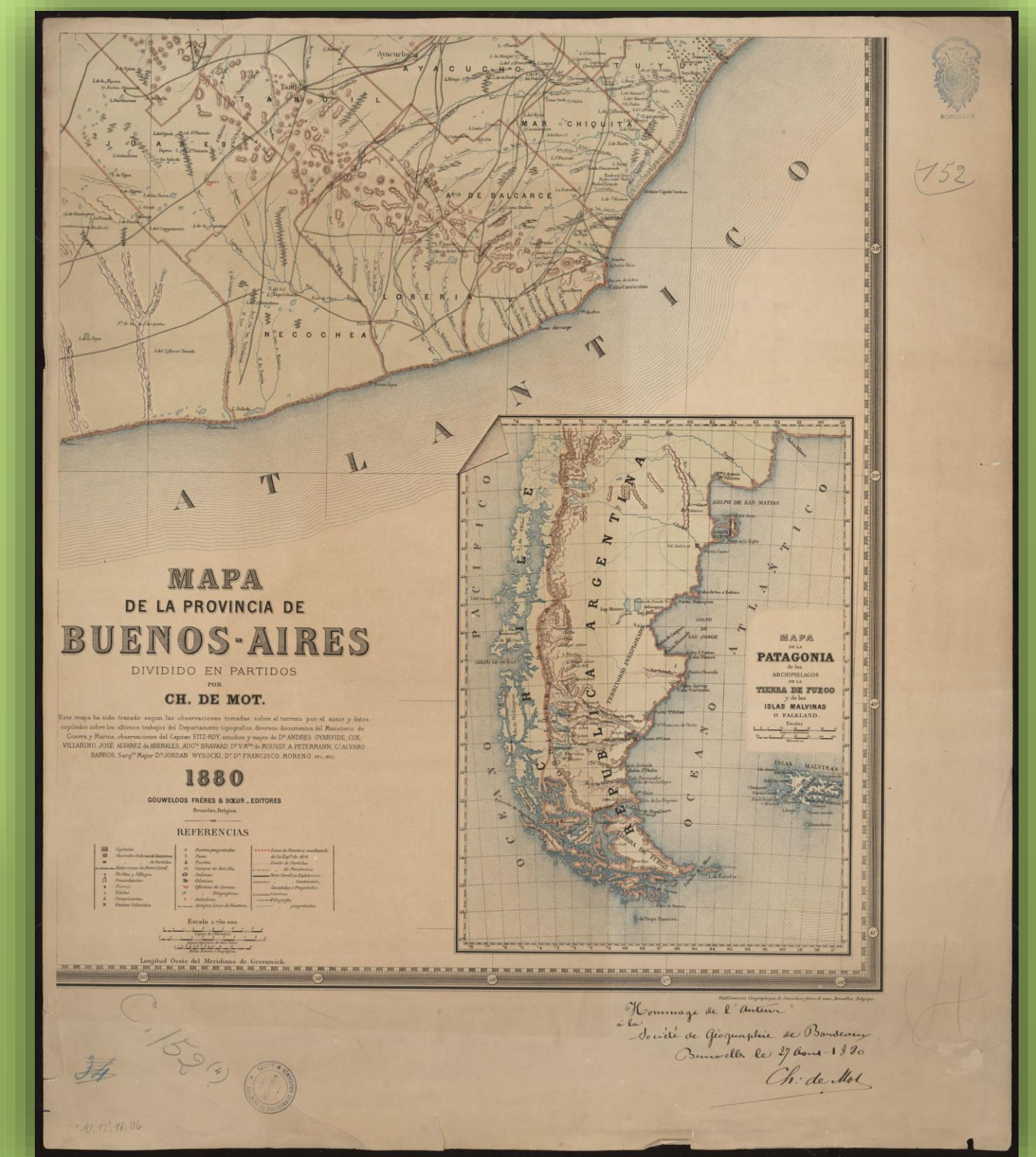
<http://www.huma-num.fr/>



Sociéda Nacional de Agricultura. Ensaio de mappa geologica do Brazil - [1908?]



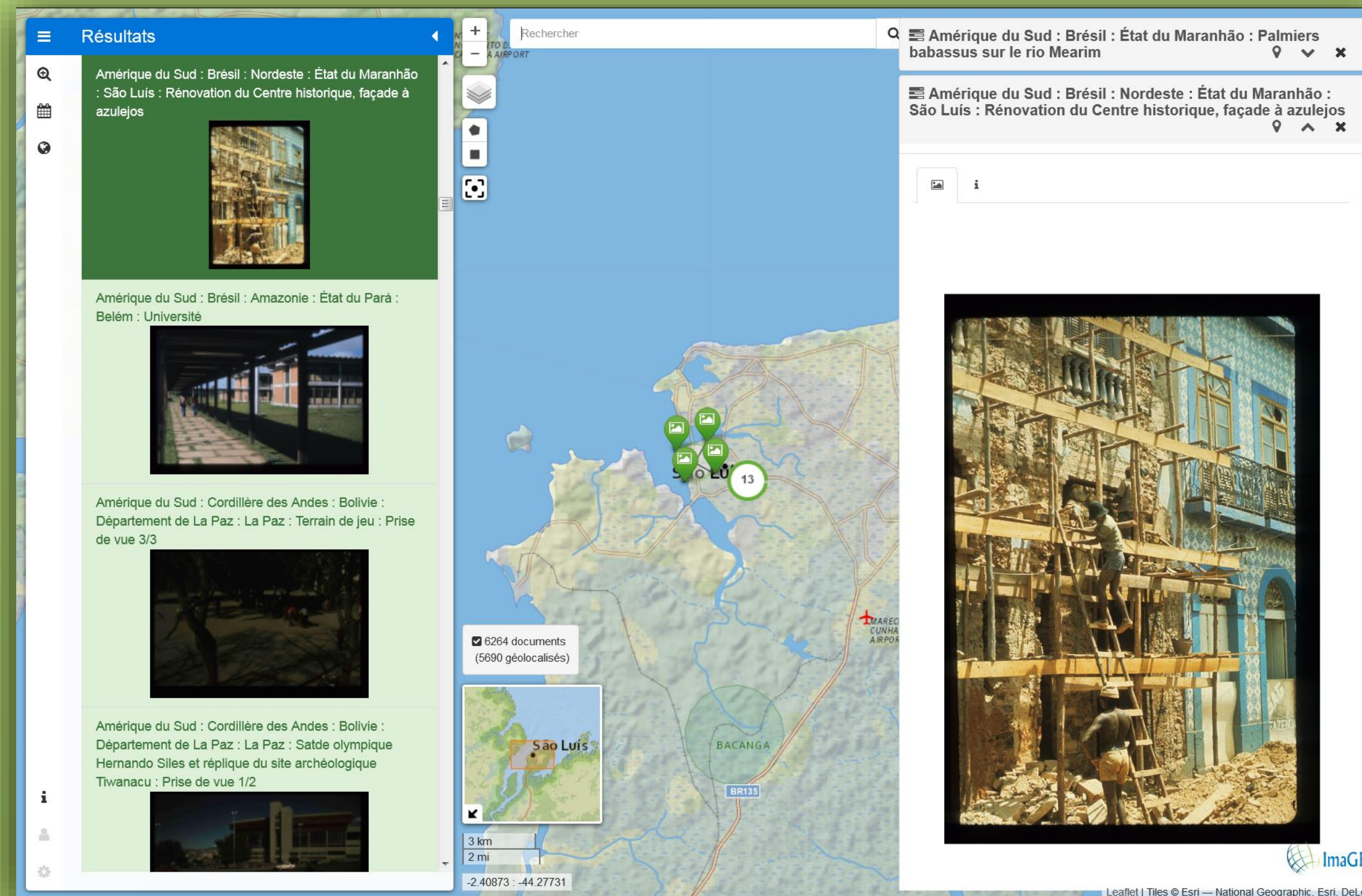
América del Sur: Brasil: Nordeste: estado de Bahia: el Salvador: mercado de la playa, vista hacia el faro de la Barra. 1933



Mapa de la Provincia de Buenos Aires [Sud-Est] - Bruxelles : Gouweloos frères et soeur - 1880



Venezuela. Maracaibo : NC-19-IV. 1977



Brazil. Estado do Pará. Escala 1:2.000.000. 1967.



Haiti. Carte particulière de l'île de Saint-Domingue. N° 71 bis. 1802.



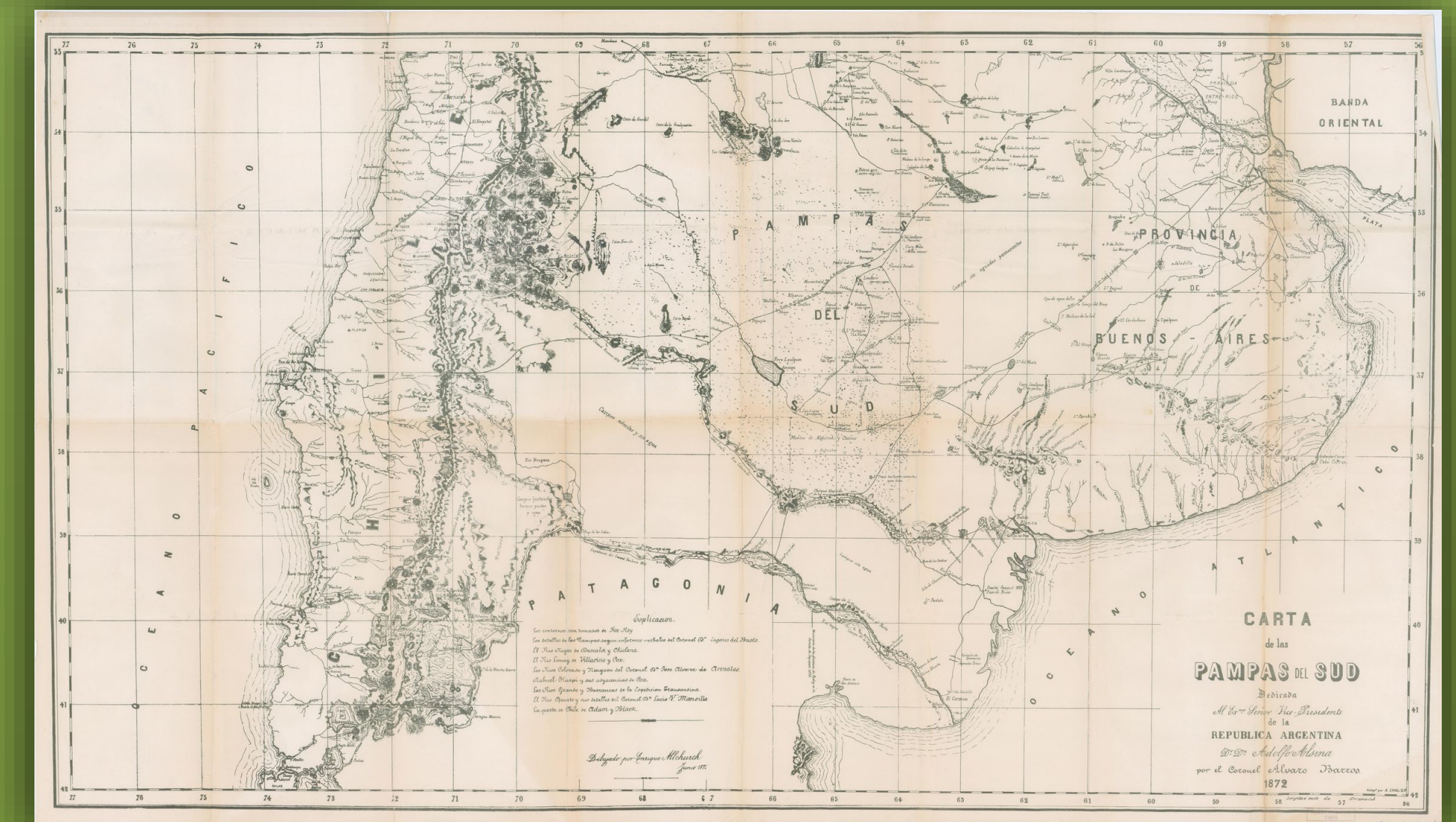
Gobernacion de la Tierra del Fuego y las Islas Malvinas. 1885.



América del Sur: la Cordillera de los Andes: Argentina: Provincia de Mendoza: Departamento Luján de Cuyo: Cerro Penitentes. 1898. Autor desconocido.



Argentina: Provincia de Mendoza Región Puente del Inca: valle de un afluido de Río Mendoza . Romain Gaignard. 1966.



Carta de las Pampas del Sur : Dedicada Al Ex mo Senior Vice Presidente de la Republica Argentina Dr Dn Adolfo Alsina. 1872.

Why?

To provide new objects of research : Diachronic analyses, critical cartography, epistemological approach

How?

Producing geodata, high quality metadata, historical context, geographic information, cartographic research

Our blog

<http://imageo.hypotheses.org>