



Intraspecific and interspecific adaptive latitudinal cline in Brassicaceae seed oil traits

Anushree Sanyal, Jonathan Roger Michel Henri Lenoir, Carmel O'Neill,
Frédéric Dubois, Guillaume Decocq

► To cite this version:

Anushree Sanyal, Jonathan Roger Michel Henri Lenoir, Carmel O'Neill, Frédéric Dubois, Guillaume Decocq. Intraspecific and interspecific adaptive latitudinal cline in Brassicaceae seed oil traits. *American Journal of Botany*, 2018, 105 (1), pp.85-94. 10.1002/ajb2.1014 . hal-02357319

HAL Id: hal-02357319

<https://hal.science/hal-02357319>

Submitted on 24 Nov 2019

HAL is a multi-disciplinary open access archive for the deposit and dissemination of scientific research documents, whether they are published or not. The documents may come from teaching and research institutions in France or abroad, or from public or private research centers.

L'archive ouverte pluridisciplinaire **HAL**, est destinée au dépôt et à la diffusion de documents scientifiques de niveau recherche, publiés ou non, émanant des établissements d'enseignement et de recherche français ou étrangers, des laboratoires publics ou privés.

American Journal of Botany

Intraspecific and interspecific adaptive latitudinal cline in Brassicaceae seed oil traits --Manuscript Draft--

Manuscript Number:	AJB-D-17-00349R2	
Full Title:	Intraspecific and interspecific adaptive latitudinal cline in Brassicaceae seed oil traits	
Short Title:	Adaptive evolution of multiple seed oil traits in Brassicaceae.	
Article Type:	Research Paper	
Section/Category:	Evolution & Phylogeny	
Corresponding Author:	Anushree Sanyal, Ph. D. Uppsala University Uppsala, SWEDEN	
Corresponding Author E-Mail:	anushree.sanyal@ebc.uu.se	
First Author:	Anushree Sanyal, Ph. D.	
Order of Authors:	Anushree Sanyal, Ph. D.	
	Jonathan Lenoir, PhD	
	Carmel O'Neill	
	Frederic Dubois, PhD	
	Guillaume Decocq, PhD	
Abstract:	<p>PREMISE OF THE STUDY Nearly all seed plants rely on stored seed reserves before photosynthesizing and 319 million years of evolution of seed plants must have subjected seed oil to natural selection. Accounting for the biogeographic distribution of seed oil traits is fundamental to understanding the mechanisms of adaptive evolution in seed plants. However, evolution of seed oils is poorly understood. By focusing on the oilseed-rich and economically important Brassicaceae family, we provide evidence of the adaptive nature of seed oil traits at intraspecific and interspecific levels.</p> <p>METHODS Univariate statistics, Pearson's correlation, multiple regression, generalized linear mixed model and phylogenetic autocorrelation tests on seed oil traits of 360 Arabidopsis accessions and 216 Brassicaceae species provides evidence of the adaptive nature of seed oil traits.</p> <p>KEY RESULTS Both seed oil content and unsaturated fatty acids have selective advantages in Arabidopsis (intraspecific-level); only unsaturated fatty acids have selective advantages across Brassicaceae species (interspecific-level). The seed oil patterns fit within the theoretical framework of the gradient model. Seed oil content increased significantly from temperate to subtropical to tropical regions. No phylogenetic signals for seed oil traits was observed.</p> <p>CONCLUSIONS Multiple seed oil traits are adaptive in nature and follow a gradient model. Consistent evolutionary patterns of seed oil traits were observed at the intraspecific and interspecific levels. Seed oil traits change with latitude. The absence of phylogenetic signal for seed oil traits and occurrence of high seed oil content in four tribes provides evidence of the the adaptive nature of seed oil traits.</p>	
Keywords:	Seed oil content; latitudinal cline; adaptation; life cycle strategies; biomes; seed oil composition; Brassicaceae; phylogenetic signal.	
Funding Information:	S.A.S. PIVERT ("Institut d'Excellence en Energie Décarbonée") funded by the French ANR	Dr. Anushree Sanyal



American Journal of Botany Author Agreement Form

Click on the first gray box and start typing. You may use the Tab to get to the next field.

Corresponding Author's Name: Anushree Sanyal

Date: October 13th, 2016

Respond to ALL the statements below either by typing your initials or checking the appropriate box. After you have completed this form, save it as a Word document or PDF, and upload it with your manuscript submission on the "Attach Files" page in Editorial Manager (<http://www.edmgr.com/ajb>).

1. All Contributing Authors know of and concur with the submission of this manuscript. Single authors please also initial.

Initials: AS

2. All authors of this research paper have directly participated in the planning, execution, or analysis of the study;

AND

All authors of this paper have read and approved the final version submitted.

Initials: Yes

3. The contents of this manuscript have not been copyrighted or published previously and are not now under consideration for publication elsewhere. The contents of this manuscript will not be copyrighted, submitted, or published elsewhere while acceptance by the Journal is under consideration. Once a manuscript is accepted for publication, all authors must sign off on the copyright form or contact the AJB Editorial Office to confirm their participation in the work.

Initials: AS

4. Authors are responsible for recognizing and disclosing any duality of interest that could be perceived to bias their work, acknowledging all financial support and any other personal connections.

☒ **No**, there is no duality of interest that I should disclose, having read the above statement.

☐ **Yes**, having read the above statement, there is potential duality of interest. This has been fully detailed in my cover letter.

5. Have the results/data/figures in this manuscript been published or are they under consideration for publication elsewhere?

☒ **No**, the results/data/figures in this manuscript have not been published elsewhere, nor are they under consideration (from you or one of your Contributing Authors) by another publisher.

☐ **Yes**, some portion of the results/data/figures in this manuscript has been published or is under consideration for publication elsewhere.

If you select *Yes*, please identify results/data/figures taken from other published/pending manuscripts in the textbox below and explain why this does not constitute dual publication. (Note: The existence of pending or previously published articles that use or have used any of the same results presented in the submitted manuscript does not generally prejudice review and acceptance.)

6. To take advantage of the free article-processing charges policy, at least one author must be a member of the BSA when the manuscript is submitted for review and also during the year of publication (except for Special Invited Papers). Authors who are not members of the BSA may also submit manuscripts for consideration. A fee of \$1000 per article, regardless of article length, will be charged to the corresponding author.

(To become a member of the BSA, please go to <https://crm.botany.org/>. NOTE: If you are contributing to a Special Issue by invitation, the BSA membership requirement is waived.)

☒ **No**, No authors of this manuscript are members of the BSA.

☐ **Yes**, I confirm that at least one author is a BSA member. I also confirm that any excess page charges and/or other editorial charges incurred will be covered by funds from a grant, institution, or agency if my paper is accepted for publication.

7. *AJB* authors have the option to make their accepted paper freely available online immediately upon publication. The fee for Open Access is \$1500; the fee is discounted to \$750 if (1) the author's institution subscribes to the Journal and (2) at least one of the authors is a member of the BSA.

☐ **Yes**, I understand the Open Access fees and would like to pay to make my paper Open Access.

Contact the Editorial Office at ajb@botany.org for more information.

Dear Dr. Diggle,

Thank you for your comments on our manuscript. We are submitting the manuscript titled “Intraspecific and interspecific adaptive latitudinal cline in Brassicaceae seed oil traits” (Ref.: Ms. No. AJB-D-16-00368) after addressing your comments on the pdf to be considered for publication in American Journal of Botany.

A point-by-point response of the issues mentioned by you has been addressed below.

Comments from the Editor:

Key words can greatly enhance the discovery of your article. Please review your key words and consider whether they will help the reader find your work, i.e., by using words and phrases that are not already in the title or the abstract and/or including words that will widen the search-window of topics in your manuscript. For more details see <http://www.amjbot.org/site/misc/ifora.xhtml#KeyWords>.

L174 – “Carmel O’Neill” – please include the complete citation for this. If it is a personal reference, please include a link to the online database. AJB requires that data be transparent to our readers. For more details see <http://www.amjbot.org/site/misc/ifora.xhtml#DataAccessibility>

The data is available in Appendix S3 in the Supplementary section.

L279-282 – please include the statistical values and d.f. for the GLMM statistics, as you did for the regressions above.

The statistical values for the GLMM analysis have been included in Appendix S4. Computing of DF for GLMM is not defend so the models do not provide this information. This problem has been explained in detail in the paper by Benjamin Bolker et al. (2008) in TREE: <http://avesbiodiv.mnncn>. A statement mentioning that DF for GLMMs were not reported because no consensus exists on the way to compute it has been included in the manuscript where the paper published by Bolker et al. in 2008 has been cited.

L301-303 – please include the statistical values and d.f. for the GLMM statistics.

The statistical values for the GLMM analysis have been included in Appendix S5. Computing of DF for GLMM is not defend so the models do not provide this information. This problem has been explained in detail in the paper by Benjamin Bolker et al. (2008) in TREE: <http://avesbiodiv.mnncn>. A statement mentioning that DF for GLMMs were not reported because no consensus exists on the way to compute it has been included in the manuscript where the paper published by Bolker et al. in 2008 has been cited.

L316-319 – please include the statistical values and d.f. for these tests, in addition to the p-values

The phylogenetic signal test which calculates the Abouheif’s C_{mean} and Moran’s I test is valid when the sample number is greater than 20 and the model only generates p-values which has been reported.

Would you like to thank the reviewers in the acknowledgements? It is not required, but we recommend it, especially if you found their comments helpful. (They don’t, as a rule, see your final response letter.)

Surely. We have included a statement thanking the reviewer for his very valuable input

Literature Cited-

Do not number the references;

The numbering from the references have been removed.

Do not capitalize “AND” before the final author’s name.

Fixed now.

For formatting examples (note spacing, capitalization, italics, etc.), go to http://cms.botany.org/file.php?file=SiteAssets/publications/ajb/ajb_Lit_Cited_Instructions.pdf.

For the online supplements (Tables S1-S3):

a. Please name them Appendix S1, S2, and S3, in the order in which they are referred to in the ms text regardless of whether they are figures or tables.

The online supplements have now been named Appendix S1-S5.

b. In the manuscript, after the first mention of the first online appendix, include the following: “Appendix S1 (see the Supplementary Data with this article)”.

This statement has been included now.

c. Upload each file separately.

Each file has been uploaded separately.

d. On each file, include a header using this format: “Smith et al.—American Journal of Botany 2018– Appendix S1”.

A header has been included with each Appendix.

e. On each file include a title/legend, starting with, e.g., “Appendix S1” (include it preferably on the file itself, but if necessary it can be included as a separate document or with the figure legends instead). [Note: do not repeat the titles in a separate list – this could add confusion during the copyediting stage.]

It has been included in the file itself.

f. Be sure to include the source of the data that is presented in each table, either in the title, as a footnote, or included directly as an additional column of data in the table itself.

The data is in the table itself.

After you have made all the changes requested by the editorial office, please have your paper edited by a native English speaker or consult a professional editing service that specializes in scientific articles for assistance. Here are some suggestions for editing services to look into:

The paper has been edited by a native English speaker.

PlantEditors Cooperative (<http://planteditors.com/>): science editing by plant biologists

PlantScribe (www.plantscribe.com): editing service geared towards plant scientists.

Editage, a division of Cactus Communications: www.editage.com.

Lauren Baker Freelance editor, <http://www.laurenbakerediting.com/>.

BioScience Writers, <http://www.biosciencewriters.com/>.

Thank you for your consideration of the manuscript.

Sincerely,
Anushree Sanyal

Dear Dr. Balcomb,

Thank you for your comments. We are submitting the manuscript titled “Intraspecific and interspecific adaptive latitudinal cline in Brassicaceae seed oil traits” (Ref.: Ms. No. AJB-D-16-00368) after addressing your comments on the online supplementals to be considered for publication in American Journal of Botany.

The following comments mentioned by you has been addressed below.

1. Appendix S3 is missing a title (starting with "Appendix S3" and providing a detailed description of the contents of this appendix).

A title for Appendix S3 has been provided. The title includes a description of the contents of the table.

2. For all the online supplements, the header needs to be a part of the file itself (i.e., listed at the very top of the document). I see you have made them part of the file name, which is fine, but they need to be in each document as well.

The header is listed at the top of the document in all the online supplements now.

Thank you for all your help.

Kind regards,
Anushree Sanyal

*RESEARCH ARTICLE**RESEARCH ARTICLE*

Short title: Adaptive evolution of multiple seed oil traits in Brassicaceae

Intraspecific and interspecific adaptive latitudinal cline in Brassicaceae seed oil traits

Anushree Sanyal^{1,2,4}, Jonathan Lenoir¹, Carmel O'Neill³, Frederic Dubois¹, and Guillaume Decocq¹

Manuscript received 28 August 2017; revision accepted 20 December 2017.

¹Unité “Ecologie et Dynamique des Systèmes Anthropisés”, EDYSAN, FRE 3498, CNRS, Université de Picardie Jules Verne, 1 rue des Louvels, FR-80037 Amiens Cedex, France

²Present address: Department of Organismal Biology, Systematic Biology, 18D Norbyvagen, Uppsala University, 75236, Uppsala, Sweden

³John Innes Centre, Norwich, NR4 7UH, United Kingdom

⁴ Author for correspondence: Anushree Sanyal (e-mail: anushree.sanyal@ebc.uu.se)

Citation: Sanyal, A., J. Lenoir, C. O'Neill, F. Dubois, and G. Decocq. 2018. Intraspecific and interspecific adaptive latitudinal cline in Brassicaceae seed oil traits. *American Journal of Botany* 105(1): XXX.
DOI: XXXXX

PREMISE OF THE STUDY: Nearly all seed plants rely on stored seed reserves before photosynthesis can commence. Natural selection for seed oil traits must have occurred over 319 million years of evolution since the first seed plant ancestor. Accounting for the biogeographic distribution of seed oil traits is fundamental to understanding the mechanisms of adaptive evolution in seed plants. However, the evolution of seed oils is poorly understood. We provide evidence of the adaptive nature of seed oil traits at the intraspecific and interspecific levels in Brassicaceae—an oilseed-rich and economically important plant family,

METHODS: Univariate statistics, Pearson's correlation, multiple regression, generalized linear mixed model analysis, and phylogenetic autocorrelation tests on seed oil traits of 360 accessions of *Arabidopsis thaliana* and 216 Brassicaceae species helped provide evidence of the adaptive nature of seed oil traits.

KEY RESULTS: At higher latitudes, both seed oil content and unsaturated fatty acids have selective advantages in *Arabidopsis thaliana* (intraspecific-level), while only unsaturated fatty acids have selective advantages across 216 Brassicaceae species (interspecific-level). The seed oil patterns fit within the theoretical framework of the gradient model. Seed oil content increases significantly from temperate to subtropical to tropical regions in Brassicaceae herbs. Absence of phylogenetic signals for seed oil traits and high seed oil content in four tribes of Brassicaceae were observed.

CONCLUSIONS: Multiple seed oil traits are adaptive in nature and follow a gradient model. Consistent evolutionary patterns of seed oil traits were observed at the intraspecific and interspecific levels in Brassicaceae. Seed oil traits change with latitude and across biomes, suggesting selection. The absence of a phylogenetic signal for seed oil traits and the occurrence of high seed oil content in four Brassicaceae tribes provides evidence of the adaptive nature of seed oil traits in Brassicaceae.

KEY WORDS: Seed oil content; latitudinal cline; adaptation; habitat; biomes; seed oil composition; Brassicaceae; phylogenetic signal; biogeographical distribution; temperate; tropical; subtropical

The primary functions of seeds are energy storage, dispersal, and perennation (Levin, 1974). During seed germination, prior to initiation of photosynthesis, nearly all seed plants depend on the energy reserves stored in the seeds. The quantity and quality of seed reserves are very critical because of their role in germination, which often plays a crucial role in determining plant fitness (Rees and Long, 1992; Westoby et al., 1992) especially in annuals (Linder, 2000). Energy and carbon reserves in seeds are starches, proteins, or triacylglycerols (TAGs), which are the fats and oils. The majority (>80%) of plant species rely almost exclusively on TAGs in their seeds (Harwood, 1980). Earliness of germination was positively correlated with seed lipid content and the seed area area-to-to-mass ratio (Gardin et al., 2011). A germinating seed has two critical requirements, namely, a source of carbon skeleton precursors and an energy source (adenosine triphosphate, ATP) to assemble the precursors. The ATP is needed for the biogenesis of new cellular constituents, synthesis of proteins, and subsequently enzymes for the degradation and conversion of storage substances. Lipids, the principal reserve materials in most seeds, meet these two requirements most effectively (Mayer and Poljakoff-Mayber, 1963).

Lipids are superior to carbohydrates as energy storage products because on a unit weight basis the oxidation of the former yields about twice as much ATP as the latter (Spector, 1956). The quantity and quality of stored reserves in seeds is associated with germination characteristics (energy availability, seed viability, and timing and speed of germination) and seedling growth, and play an important role in plant fitness and are therefore under selection (Levin 1974; Linder, 2000). During germination, two distinct patterns of mitochondrial development are dependent on the nature of the stored reserves. In starch-storing seeds, repair and activation of preexisting organelles dominate, while oil-storing seeds typically produce new mitochondria (Morohashi and Bewley, 1980; Morohashi, 1986; Ehrenshaft and Brambl, 1990). Furthermore, the carbons in fatty acids (FAs) are highly reduced and the oxidation of stored oils in germinating seeds yield twice as much energy as stored proteins and carbohydrates on a per gram basis thus facilitating germination (Baud and Lepiniec, 2010; Lüttge, 2012; Theodoulou and Eastmond, 2012).

The seed oil content (SOC) varies widely within a single species (O'Neill et al., 2003), within genera, among genera of the same family, and among families (Levin, 1974). For example, the SOC within the genus *Chrozophora* varies from 8.1–56.5% (Kleinman et al., 1965; Barclay and

Earle 1974; Kapoor et al., 1986); genera *Balanites* and *Zygophyllum* of the family Zygophyllaceae have mean SOC of 7.9% and 40%, respectively (Matthäus, 2012); mean SOC of the families Polygonaceae and Chrysobalanaceae are 3% and 57.7%, respectively (Matthäus, 2012); and the SOC among genotypes of *Arabidopsis thaliana* varies from 28–44% (O'Neill et al. 2003). The heritability of SOC typically exceeds 50% (Johnson and Bernard 1962; Barker and McKenzie 1972), and most species are relatively insensitive to differences in population density, climatic regime, and mineral levels in the soil (Genter et al., 1956; Comstock et al., 1969; Kittock and Williams, 1970). The genetic variability and genetic control of SOC show that SOC may be subject to evolutionary change (Levin, 1974). Selection may act on different proportions of SOC in different biogeographic regions of the world. Some work has been done on the evolution of seed oil composition (constituent FAs in the seed oil) (Linder, 2000; Sanyal and Linder, 2013); however, only one study has attempted to study the selective pressure on SOC (Levin, 1974).

Previous studies have shown that multigene (*DGAT1*, *WRI1*, and *SDP1*) engineering of TAG metabolism increased SOC in *A. thaliana* (van Erp et al., 2014). Overexpression of *DGAT1* in transgenic lines of *Brassica napus* increased the SOC by 14% and prevented reduction of SOC during drought (Weselake et al., 2008). Furthermore, the following genes and transcription factors are all regulators of SOC: *WRINKLED1*, *LEAFY COTYLODON 1 (LEC1)*, *TRIACYLGLYCEROL BIOSYNTHESIS DEFECT1* (Katavic et al., 1995; Focks and Benning, 1998; Jako et al., 2001; Tan et al., 2011), *LEC1*-like (*LIL*), *LEC2*, *PICKLE* (Bao and Ohlrogge, 1999; Ogas et al., 1999; Dean Rider et al., 2003; Baud et al., 2007), *GLABRA2* (Shen et al., 2006), *SUGAR –DEPENDENT1* (Kim et al., 2014; Kelly et al., 2013a,b), *ABSCISSIC ACID INSENSITIVE 3*, *FUSCA3* (Santos-Mendoza et al., 2008), *DNA BINDING WITH ONE FINGER4* and *DOF11* (Wang et al., 2007), Acetyl CoA carboxylase (Ohlrogge and Jaworski, 1997), and expressed yeast gene encoding cytosolic glycerol-3-phosphate dehydrogenase and yeast sn-2 acyltransferase gene in *B. napus* (Zou et al., 1997; Vigeolas et al., 2007). Hence, selection could be acting on the variation of the genes responsible for controlling SOC caused by their possible role in plant adaptation.

Baker (1970) suggested that greater packing of species and competitive interactions among tropical plants may select for a greater quantity of energy reserve in seeds, and the amount of SOC could change with biomes. In this study, we will examine whether the nature of the seed oil patterns fits the framework of the gradient model. In the gradient model, the traits of species are observed to change monotonically along positional gradients (latitude, longitude, altitude, etc.) across the geographical range, which is usually a consequence of the response of species to a particular environmental factor (Gaston et al. 2008). A study by Levin (1974) on the evolutionary pressures acting on SOC, explored the relationships between SOC and plant habit (herbs, shrubs, and trees) in Fabaceae, as well as SOC and biomes, in 1400 species from 113 families. A significant relationship between SOC and habit was observed in Fabaceae: an increase in woodiness was accompanied by a shift in favor of a more efficient storage product. However, no significant difference was found between the SOC of plants of the same habit (herbs, shrubs or trees) in the temperate, tropical, and subtropical regions; the exception to this was the herbs from the subtropical region, which had greater SOC than the herbs from the other two regions. A recent study revealed a significant positive relationship between SOC and latitude in the families Sapindaceae and Sapotaceae, and a negative relationship between SOC and latitude in Papaveraceae (Sanyal and Decocq, 2016). Another study explored the relationship between seed oil composition and latitude in *A. thaliana* where the proportions of saturated FAs decreased significantly with increasing latitude (Sanyal and Linder, 2013). A positive correlation between SOC and polyunsaturated fatty acids (PUFAs) has been observed (Bretagnolle et al., 2016; Sanyal and Decocq, 2016) and lighter and smaller seeds have also been observed to have greater SOC (Bretagnolle et al., 2016).

Although the Fabaceae family is large with several crop species, the family is atypical in having low SOC and high protein content. Brassicaceae, however, is a large family of 338 genera and 3710 species (Beilstein et al., 2008) comprising several oilseed-rich species and crops of major economic importance. Here, we explore the relationships between SOC and life cycle strategies (annual, biennial, perennial) in the oilseed-rich Brassicaceae family, and the relationship between SOC to latitude and biomes (temperate, subtropical, and tropical) to account for the biogeographical distribution of the species. Because seed oils contain FAs, examining the relationship between SOC and its constituent FAs will be crucial in determining the evolutionary

potential of each of these seed oil traits. We examined the relationship and patterns of SOC and seed oil composition at both the intraspecific level in *A. thaliana* and at the interspecific level across Brassicaceae species to determine the effect and interactions of multiple seed oil traits and their possible roles in plant adaptation. Previous studies have shown that the proportions of unsaturated FAs increase with latitude and increase plant fitness (Linder 2000), but no relationship between SOC and latitude was observed (Levin 1974). Hence, we examined the relationship of both SOC and FAs with changing latitude. Our study will also try to determine if the proportions of certain FAs increase or decrease with SOC to understand their independent or combined role in plant adaptation. Finally, we also examined SOC in the Brassicaceae family within a phylogenetic context.

<h1>MATERIALS AND METHODS

<h2>Seed oil content and seed oil composition—

Published SOC data for 216 species and subspecies of 88 genera of the Brassicaceae family were obtained from the Seed Oil Fatty Acids database (Matthäus, 2012) and from the literature (El Bassam, 2010) (Appendix S1, see the Supplemental Data with this article). The SOC for a given species was measured as the mean and median across all the percent SOC values available for that given species. The SOC of 360 ecotypes of *A. thaliana* was obtained from O'Neill et al. (2003) (Appendix S2), and the seed oil composition (individual FA proportions) was obtained from O'Neill (Appendix S3).

<h2>Life history strategies and distribution of Brassicaceae herbs—

Life history strategies data (annual, biennial, perennial) of the 216 species and subspecies of Brassicaceae herbs was taken from the Plants for a Future database (<http://www.pfaf.org/user/default.aspx>) and from the literature (Warwick et al., 2009). The classification of the 216 species and subspecies based on their geographical distribution into tropical, temperate, or subtropical was done based on the information available in the Germplasm Resources Information Network (<http://www.ars-grin.gov/>) from the USDA, the Euro+Med PlantBase (<http://www.emplantbase.org/home.html>); the Plants for a Future database (<http://www.pfaf.org/user/default.aspx>), and from published works of local and regional flora

(Lambinon et al., 2004). The latitude information, occurrence records, and counts of occurrence records of the 216 species and subspecies was extracted from the Global Biodiversity Information Facility (GBIF) (<http://www.gbif.org/>) by using the ‘rgbif’ package (Chamberlain et al., 2014) in the R programming software (R Development Core Team, 2013). The occurrence data of the 319 genotypes of *A. thaliana* were obtained from The Arabidopsis Information Resource database (<http://www.arabidopsis.org/>) and from the literature (Sanyal and Linder, 2013).

<h2>*Statistical analyses—*

<h3>*Does seed oil content in Brassicaceae herbs change with geographical regions and life cycle strategies?—*

The differences in the SOC of herbs in different biomes (temperate, subtropical, and tropical) and herbs with different life cycle strategies (annual, biennial, and perennial) in Brassicaceae were examined. To compare the SOC among herbs in different biomes, a multiple regression was performed where herbs in temperate, subtropical, and tropical regions were treated as a fixed main effect and SOC as the dependent variable. Multiple regression was performed to test for differences in SOC and the nine constituent FAs in Brassicaceae herbs with different life cycle strategies (annual, biennial, perennial). SOC and the individual FAs were the dependent variables, and annual, biennial, and perennial were the three independent variables.

We used general linear mixed models (GLMMs) to account for the phylogenetic information when correlating SOC, and the nine constituent FAs with life cycle strategies. In the GLMM model, the seed oil traits (SOC and nine FAs) were the response variables; life cycle strategies (annual, biennial, or perennial) were set as the fixed effect variable; and tribe, genus, and species as the random effect variables. Because the response variable is a count, we used the `poisson.glm` family model. We also used GLMMs to account for the phylogenetic information when correlating SOC and the nine constituent FAs with biomes. In the GLMM model, the seed oil traits (SOC and nine FAs) were the response variables; biomes (temperate, subtropical, or tropical) were set as the fixed effect variable, and tribe, genus, and species as the random effect variables. Because the response variables are count data, we used the `poisson.glm` family model.

<h3>Do seed oil content and seed oil composition change with latitude?—

The effect of latitude on SOC and individual FA proportions within *A. thaliana* and across Brassicaceae was examined. At the intraspecific level, we carried out an ordinary least-square (OLS) regression with 323 ecotypes of *A. thaliana* with the mid-latitudinal position of each genotype as the explanatory variable, and the SOC of each genotype as the response variable. At the interspecific and family level, an OLS regression was performed with 216 Brassicaceae species and subspecies with species' mid-latitudinal range as the explanatory variable, and species' SOC as the response variable. Because the mid-latitudinal range position of a species is constrained between the poles and depends on its latitudinal range, it is likely that the relationship between species' mid-latitudinal range and species' SOC is affected by species' latitudinal range. Hence, we included species' latitudinal range as a covariate in all our models at the family level. Mid-latitudinal range position was computed using the following formula: (minimum latitude + species' latitudinal range/2), where species latitudinal range is the maximum latitude minus the minimum latitude. A multiple regression was also performed to account for species occurring in multiple biomes by using the model: $\text{lm}(\text{seed oil content} \sim \text{temperate} + \text{subtropical} + \text{tropical})$.

<h3>Do we see correlations between seed oil content and fatty acid composition?—

The correlation between seed oil content and seed oil composition in *A. thaliana* and across Brassicaceae species was examined. Pearson's correlation coefficient (r) was performed for pairwise comparisons of SOC and nine constituent FAs (16:0, 18:0, 18:1, 18:2, 18:3, 20:0, 20:1, 20:2, 22:1) to evaluate their relationships. All tests were performed using R 3.0.0 (R Development Core Team, 2013) and Systat 13 (Wilkinson, 2010).

<h2>Phylogenetic analyses—

<h3>Mapping seed oil content data onto a phylogenetic tree—

For the phylogenetic analyses, the most recent phylogenies obtained from phytochrome A (PHYA) and *ndhF* gene regions (Belstein et al., 2008; Liu et al., 2012) has been used. The major clades can be closely compared with the nrDNA ITS phylogeny (Bailey et al., 2006). The SOC data available for 26 of the 100 species included in the phylogeny were mapped onto the

phylogeny to test for phylogenetic signals for the SOC trait in Brassicaceae. This was to explore if certain clades evolved towards high or low SOC, how close they were phylogenetically, and whether the clades had primarily temperate or tropical species to determine the nature of SOC evolution.

<h2>Phylogenetic autocorrelation—

Phylogenetic autocorrelation was estimated to measure the extent to which the phenotypic trait values correlate throughout the phylogeny. Phylogenetic distance between the species was obtained from the Brassicaceae phylogeny (Belstein et al., 2008). The DNA sequences were aligned, and rooted phylogenetic trees were obtained by using the neighbor-joining method and the unweighted pair group method. Residuals from the autoregressive models were tested for independence (Gittleman and Kot, 1990). The residual values were considered as the dependent variable and the phylogenetic distance as the independent variable. Phylogenetic signal for seed oil content and seed oil composition was estimated by performing Abouheif's C_{mean} and Moran's I test (Münkemüller et al., 2012). Trait evolution was measured under a pure Brownian motion model, which defines the phylogenetic relationship as the only predictor of trait similarity among species. All tests were performed within R 3.0.0 (Chamberlain et al., 2014)

<h1>RESULTS

<h2>Relationship between seed oil content and the biogeographical distribution and the life cycle strategies of Brassicaceae herbs—

A multiple regression analysis showed significant differences ($F_{3, 154} = 3.763$, $P = 0.012$, $R^2 = 0.07$) in the SOC of herbs in the different biomes (temperate, subtropical, and tropical).

Significant differences in the proportions of the FAs 18:0 ($F_{3,161} = 2.808$, $P = 0.04$, $R^2 = 0.05$), 18:3 ($F_{3,161} = 4.099$, $P = 0.008$, $R^2 = 0.071$), 20:0 ($F_{3,157} = 2.891$, $P = 0.037$, $R^2 = 0.05$) were observed between species in different biomes. The proportions of SOC increased from the temperate (26.4%) to the subtropical (28.6%) to the tropical (30%) regions (Table 1). The proportions of saturated FAs 18:0 and 20:0 decreased from the temperate to the subtropical and tropical regions, and the proportions of unsaturated FA 18:3 decreased from the temperate to the subtropical and tropical regions (Table 1).

Multiple regression analysis showed that there is no significant relationship ($P = 0.17$) between SOC and the different life cycle strategies (annual, biennial, and perennial). Significant differences in the proportions of the FAs 16:0 ($F_{3,161} = 3.5$, $P = 0.017$, $R^2 = 0.06$), 18:0 ($F_{3,161} = 3.327$, $P = 0.02$, $R^2 = 0.06$), 18:2 ($F_{3,161} = 11.24$, $P = 9.774\text{e-}07$, $R^2 = 0.17$), 18:3 ($F_{3,161} = 3.584$, $P = 0.015$, $R^2 = 0.06$), 20:0 ($F_{3,157} = 3.561$, $P = 0.015$, $R^2 = 0.064$), 20:1 ($F_{3,161} = 4.088$, $P = 0.008$, $R^2 = 0.07$) were observed between species with different life cycle strategies.

A GLMM model accounting for phylogenetic information of the tribes, genus, and species showed a significant relationship between SOC and life cycle strategies ($P = 0.01$) and the relatedness of the species. A significant relationship was also observed for oleic ($P \leq 0.01$), linoleic ($P < 0.0001$), linolenic ($P = 0.02$), eicosenoic ($P \leq 0.03$), and erucic ($P < 0.0001$) acids (Appendix S4). The degrees of freedom for GLMMs were not reported because no consensus exists on the way to compute them (Bolker et al. 2008).

<h2>Effect of latitude on seed oil content and individual fatty acids within and between Brassicaceae species—

A significant increase in the SOC ($P = 0.025$, $r^2 = 0.015$, Fig. 1A) with increasing latitude and a significant decrease in the proportions of saturated palmitic acid ($P = 0.027$, $r^2 = 0.016$, Fig. 1B) with increasing latitude was observed in *A. thaliana*. The proportions of unsaturated oleic, linolenic, eicosenoic, and eicosadienoic acids increased with latitude although the relationships were not significant. The proportions of saturated arachidic acid decreased with increasing latitude while a reverse trend was observed for stearic acid, but none of the responses were significant. No change was observed in the proportions of linoleic and erucic acids.

The OLS regression analysis of the SOC of the 216 Brassicaceae species did not reveal a significant relationship between SOC and latitude. However, significant relationships between unsaturated oleic ($P = 0.016$, $r^2 = 0.033$) and linolenic ($P = 0.004$, $r^2 = 0.052$) acids and latitude (Fig. 1C and D), and a nearly significant relationship between linoleic ($P = 0.084$) acid and latitude were observed where their proportions increased with increasing latitude, as observed in *A. thaliana*. The trends observed for saturated palmitic, stearic, and arachidic acids were

decreased proportions with increasing latitude, and for unsaturated eicosenoic acid a reverse trend was observed, although these relationships were not significant.

A GLMM model accounting for phylogenetic information of the tribes, genus, and species showed a significant relationship between SOC and biomes ($P = 0.01$) and the relatedness of the species. A significant relationship was also observed for linoleic ($P \leq 0.04$), eicosenoic ($P \leq 0.01$), and erucic ($P < 0.008$) acids (Appendix S5). The degrees of freedom for GLMMs were not reported because no consensus exists on the way to compute them (Bolker et al. 2008).

<h2>***Correlation analysis between SOC and FAs in *A. thaliana* and Brassicaceae species—***

In *A. thaliana*, significant negative correlations between SOC and palmitic ($r = 0.25$, $P < 0.0001$) and linoleic ($r = 0.248$, $P < 0.0001$) acids were observed. There was a significant positive relationship between SOC and oleic (18:1, $r = 0.226$, $P = 0.001$), eicosenoic (20:1, $r = 0.249$, $P < 0.0001$), and stearic (18:0, $r = 0.178$, $P = 0.04$) acids. Negative relationships observed between SOC and eicosadienoic (20:2, $r = -0.101$), and erucic (22:1, $r = -0.135$) acids, and a positive relationship with arachidic acid (20:0, $r = 0.011$) was not significant, the relationship between linolenic acid and SOC was nearly significant at $P = 0.087$ (Table 2, Fig. 2). Across Brassicaceae species, a significant negative correlation was observed only between linoleic acid and SOC.

<h2>***Phylogenetic signals for the seed oil content and seed oil composition traits in Brassicaceae—***

Phylogenetic autocorrelation analysis of the 26 species for which SOC data was available did not detect any phylogenetic signals for the SOC ($P = 0.94$) and seed oil composition (FA) traits (palmitic ($P = 0.93$), stearic ($P = 0.79$), oleic ($P = 0.13$), linoleic ($P = 0.8$), linolenic ($P = 0.91$), eicosenoic ($P = 0.23$), and erucic ($P = 0.43$) acids). The SOC data of 25 of the 26 species were from 16 tribes of Brassicaceae (Table 3, Fig. 3) with the exception of *Lunaria annua*, which does not belong to any of the tribes. In the monophyletic Camelinae tribe, all the three species' *Camelina microcarpa* (31.2%), *Capsella bursa-pastoris* (31.8%), and *A. thaliana* (39.8%) have high SOC (>31%). In the monophyletic Cardamineae, both the taxa *Barbarea vulgaris* (28.6%) and *Planodes virginicum* (25.5%) have high SOC. In the monophyletic Thlaspidaceae, the two taxa

Alliaria petiolata (29%) and *Thlaspi arvense* (29.5%) have very similar and high SOC (Table 3, Fig. 3). Furthermore, in the Brassiceae tribe, the SOC of *Brassica oleracea* and *Cakile maritima* are high (33% and 44.7%). The SOC of *Hirschfeldia incana* is 19.1%, but the variation of the SOC of the species ranges from 5.4–32%, and the median value was high at 22.6%. In the tribe Isatideae, no consistent pattern was detectable from the SOC proportions in the two taxa *Isatis tinctoria* (23.3%) and *Myagrurum perfoliatum* (10.9%). Two closely related tribes—Hesperideae and Anchonieae—were each represented by a single species, *Hesperis matronalis* and *Bunias orientalis*, but the SOC of the two species in the two tribes were very different at 29.8% and 11.1%, respectively (Table 3, Fig. 3). The SOC pattern of eight tribes (Descuraineae, Lepideae, Hesperideae, Anchonieae, Sisymbrieae, Arabideae, Calepineae, Aethionemeae, Table 3, Fig. 3) could not be determined because SOC data of only a single species were available for these tribes. Eleven tribes were unrepresented in this study because of lack of SOC data. Thus, this study revealed that high SOC (>25%) evolved independently in four tribes: Cardamineae (27.1%), Camelinaeae (34.3%), Brassiceae (33.4%), and Thlaspidiae (29.3%) (Table 3, Fig. 4).

<h1>DISCUSSION

This study determined a significant relationship between seed oil traits and biomes (temperate, subtropical, and tropical) and changing latitude in the Brassicaceae family. The study also revealed a significant relationship between seed oil composition (FA composition) and the life cycle strategies (annual, biennial, perennial) in Brassicaceae. The study showed that no phylogenetic signal was identified for seed oil traits, but reports that high SOC evolved independently in four tribes of the Brassicaceae family suggesting that gene trees of genes regulating seed oil traits can help understand the seed oil evolutionary patterns.

<h2>*Evidence of differences in seed oil content within herbs in different geographical regions and with different life cycle strategies—*

Characteristics of seeds and seedlings require precise integrations and coordination between different functions for successful reproduction. Oils are found in at least 83 (30%) of the 277 plant families listed by Engler and Prantl (McNair, 1930), and of these 83 families, up to 48.1% are mainly tropical or subtropical, and up to 18% are mainly temperate in habitat (McNair, 1930). Hence, oils are found more frequently in plants in tropical and subtropical regions than in

temperate regions. The adaptive nature of seed oil composition in temperate and tropical regions has been shown in previous studies where plants with greater proportions of unsaturated fats germinate earlier and compete better at higher latitudes (Linder, 2000). An increase in proportions of PUFAs and decrease in seed size and weight has been observed with increasing SOC (Bretagnolle et al., 2016; Sanyal and Decocq, 2016). It is also known that high temperature increases SOC proportions (Hartwig, 1973).

The majority of Brassicaceae species are oilseed rich with great variation in SOC (3–48%) which could potentially be under selection. In our study, we observed a significant increase in SOC in the Brassicaceae herbs from temperate (26.4%) to the subtropical (28.6%) to the tropical (30%) regions (Table 1). This increase in SOC in herbs in subtropical and tropical regions when compared to the temperate herbs possibly helps in adaptation as greater packing of species and greater competitive interactions in the tropics may select for a more efficient and higher energy-containing storage product like oil in the seeds (Baker, 1970). The proportions of the saturated FAs (18:0 and 20:0) increase significantly from the temperate to the subtropical and tropical regions, whereas the proportions of the unsaturated FA (18:3) significantly decreases from the temperate to the subtropical and tropical regions (Table 1). This trend follows the pattern predicted by the adaptive theory where the proportions of unsaturated FAs increase with increasing latitude, and the increased proportions of SOC increase the quantity of energy and the increased proportions of unsaturated FAs with low melting points increase the proportions of the available energy for early germination, which helps plants to adapt at higher latitudes where the growing season is shorter. Thus, multiple oil traits seem to be facilitating the adaptation of plants at higher latitudes.

Furthermore, the majority of the herbs are annuals and have to germinate, establish, and reproduce within a year (Linder, 2000) so there might be increased selection pressure on seed oil traits in herbs. In our study, we did not see any significant differences in the SOC between annuals, biennials, and perennials. However, we did see significant differences in the proportions of FAs (16:0, 18:0, 18:2, 18:3, 20:0, 20:1) between annuals, biennials, and perennials suggesting that seed oil composition could be playing a role in plant adaptation.

<h2>**Evidence of a latitudinal cline within and across Brassicaceae species—**

Significant increase in SOC and decrease of saturated palmitic acid with increasing latitude in *A. thaliana* (Figs. 1A, 1B) shows that there could be selection for greater proportions of SOC and unsaturated FAs with increasing latitudes. The trend of increasing proportions of unsaturated FAs (oleic, linolenic, eicosenoic, and eicosadienoic) with increasing latitude also point towards the same pattern. A positive correlation between SOC and the proportions of PUFAs were also observed in Sapindaceae and several weed species (Bretagnolle et al., 2016; Sanyal and Decocq, 2016). Correlation studies also revealed that there was a significant negative correlation between SOC and saturated palmitic acid, and significant positive correlations with unsaturated oleic, linolenic, eicosenoic acids (Table 2, Fig. 2), and also saturated stearic acids. However, the proportion of stearic acid is $\leq 4\%$. Significant negative correlation between SOC and unsaturated linoleic acid suggests a tradeoff between oleic and linoleic acids because the former is the precursor of the latter in the seed oil biochemical pathway.

The pattern of increased proportions of FAs with increasing latitude has been observed previously in *Arabidopsis* (Sanyal and Linder, 2013) and sunflower (Linder, 2000). This pattern has been shown to be adaptive in nature in a previous study on sunflowers (Linder, 2000). In our study we also observed a similar pattern. This suggests that the significant increase in SOC and unsaturated oleic, linoleic, and eicosenoic acids with latitude, and significant decrease of palmitic acid with latitude in *A. thaliana* is likely an adaptive trait because higher SOC and higher proportions of unsaturated FAs could be providing more energy quickly. Increased SOC provides greater amounts of energy and greater proportions of unsaturated FAs with low melting points, and provides the needed energy faster at cooler temperatures at higher latitudes. This increased SOC helps the species germinate quickly in shorter growing seasons at higher latitudes and gives it an advantage over other competing species (Linder, 2000). The proportions of saturated and unsaturated FAs, and subsequently their melting points, vary with latitude (Linder, 2000; Sanyal and Linder, 2013). Thus, at lower latitudes, seeds with higher proportions of saturated oils and higher melting points would be favored because they would have more energy per carbon atom for growth without delaying or slowing germination. At higher latitude and cooler germination temperatures, seeds with higher proportions of unsaturated oils may germinate earlier and/or more rapidly than seeds that are higher in saturated FAs (Linder, 2000).

Thus, selection could be acting on multiple seed oil traits such as SOC and unsaturated FA proportions, both of which increase with increasing latitude; the selection is possibly helping in adaptation in *A. thaliana*. In addition, previous studies on weed, rain forest, and crop species have shown that seed size and weight and SOC are inversely proportional (Bretagnolle et al., 2016, Hamilton et al. 2013; Nagel and Börner, 2010). *Arabidopsis thaliana* also has smaller and lighter seeds with high SOC—this suggests that there could be selection for greater SOC in the small seeds of *A. thaliana* to pack more energy-rich molecules to increase fitness. Therefore, K-selection will be favored over r-selection at the higher latitudes, which will lead to selection of energy-rich seeds. This possible selection on multiple seed oil and seed traits could be contributing towards the successful establishment of *A. thaliana* at higher latitudes.

At the interspecific level in the Brassicaceae family, a significant increase in the proportions of unsaturated oleic and linolenic acids with latitude in the 216 Brassicaceae species suggests that an adaptive pattern is seen in the seed oil composition trait where there is selection for greater proportions of unsaturated FAs at higher latitudes showing the same pattern seen in *A. thaliana*. Furthermore, the trends of decreasing saturated palmitic, stearic, and arachidic acid proportions and increasing unsaturated linoleic and eicosenoic acids with increasing latitude also point towards this adaptive theory. A significant relationship between SOC and changing latitude was not observed. Lack of precise information of the latitudinal location of the SOC data and possibly incomplete species occurrence data from GBIF due to differences in sampling efforts across the world could be obscuring our results and the exact relationship between SOC and latitude in Brassicaceae. However, a multiple regression analysis revealed a significant difference in the SOC, stearic, linolenic, and arachidic acids between species in temperate, subtropical, and tropical regions. The nature of the intraspecific and interspecific seed oil patterns fit within the theoretical framework of the gradient model (Gaston et al. 2008).

Other important nontemperature related factors, which could covary with latitude, are herbivory and photoperiod. It has been suggested that herbivory increases at lower latitudes (Janzen, 1970; Connell, 1971; Seigler, 1979) and herbivores prefer seeds with higher SOC because it provides more energy. Furthermore, wild birds have shown a preference for black-oil sunflower varieties with the highest SOC (Collins and Horn, 2012). Thus, one would expect a

selection force on SOC at lower latitudes because of herbivory, which could explain the increase in SOC at higher latitudes. Photoperiod and temperature had an effect on the reproductive period and SOC in soybean (Miranda et al., 1998). The plants subjected to a long photoperiod had higher SOC than those subjected to shorter photoperiod conditions (Tianfu et al., 1997). Photoperiod at higher latitudes is longer in the summer and shorter in the winter. In addition, the level of illumination has a significant effect on SOC. In temperate herbs, it has been observed that the mean SOC is inversely proportional to illumination and SOC increases from 16.59% to 25.43% to 27.91% as the level of illumination decreases in those inhabiting open habitats, woodland borders, and shaded habitats and woodlands (Levin, 1974).

<h2>*Phylogenetic signal in the seed oil content trait—*

The absence of phylogenetic signal for the seed oil traits in Brassicaceae was observed (Fig. 3). However, the occurrence of high SOC (>27%) proportions in four tribes: Cardamineae, Thlaspidaceae, Brassicaceae, and Camelinae (Table 3, Fig. 4) suggests that examining the phylogeny of genes regulating seed oil traits will help understand the underlying mechanism of the observed pattern. A phylogeny of Brassicaceae generated from the *FAEI* gene suggested that purifying selection is the major evolutionary force acting on the gene, which is consistent with similar findings in another fatty acid elongase gene—*EVOVL5*—responsible for encoding an enzyme involved in the biosynthesis of long-chain PUFAs in fish (Carmona-Antoñanzas et al., 2013).

Studying the phylogeny of several SOC genes in Brassicaceae species will help identify the evolutionary patterns of the SOC genes. This could help us understand the genetic basis of the adaptive nature of SOC in Brassicaceae and other families. This suggests that because the *FAEI* gene is involved in TAG biosynthesis, focus on the sequence variation and phylogeny generated from SOC genes will be useful in understanding the evolutionary pattern of the SOC trait. Hence, several SOC genes in Brassicaceae and other families should be used for generating phylogenies, and a comparison of the tree topologies may reveal meaningful and robust patterns of adaptive evolution and/or phylogenetic signals for the SOC trait within and across families.

<h1>CONCLUSIONS

Our study provides evidence for the adaptive nature of the seed oil traits in plants across biomes. We show that the nature of the intraspecific and interspecific seed oil patterns fit within the theoretical framework of the gradient model, and that the same phenotypic patterns with respect to the relationship between seed oil content and biomes were observed at both the intraspecific and interspecific levels. A significant latitudinal cline for seed oil composition was observed at both the intraspecific and interspecific levels, while a significant latitudinal cline for seed oil content was observed only at the intraspecific level. The study suggests that multiple seed oil traits (seed oil content and unsaturated fatty acids) could have selective advantages at higher latitudes in *Arabidopsis thaliana* (intraspecific-level pattern) and across 216 Brassicaceae species (interspecific-level pattern). We show that there is a significant difference in the seed oil composition of the Brassicaceae species with different life cycle strategies (annuals, biennials, perennials). Phylogenetic signals for the seed oil traits (seed oil content and seed oil composition) were not detected in the Brassicaceae family. However, the occurrence of high seed oil content (>27%) was observed in four tribes: Camelinae, Thlaspidiae, Cardamineae, and Brassiceae; this suggests that phylogenetic gene trees of seed oil genes can reveal the seed oil evolutionary patterns. These seed oil evolution patterns are in accordance with the predictions of the adaptive theory. This study builds the framework for understanding the adaptive evolution of seed oil traits both at the intraspecific and interspecific levels not only in Brassicaceae, but also in other angiosperm families.

<h1>ACKNOWLEDGEMENTS

The authors thank S.A.S. PIVERT (Institut d'Excellence en Energie Décarbonée) for the funding from The French National Research Agency and were financially supported within the framework of the Precompetitive Research program “Genesys.” We thank the anonymous reviewer and Pamela Diggle for their input, which improved the manuscript considerably.

<h1>LITERATURE CITED

Bailey, C. D., M. A. Koch, M. Mayer, K. Mummenhoff, S. L. O’Kane, S. I. Warwick, M. D. Windham, and I. A. Al-Shehbaz. 2006. Toward a global phylogeny of the Brassicaceae, *Molecular Biology and Evolution* 23: 2142–2160.

Baker, H. G. 1970. Evolution in the tropics. *Biotropica* 2: 101–111.

- Bao, X., and J. Ohlrogge. 1999. Supply of fatty acid is one limiting factor in the accumulation of triacylglycerol in developing embryos. *Plant Physiology* 120: 1057–1062.
- Barclay, A. S., and F. R. Earle. 1974. Chemical analyses of seeds III: oil and protein content of 1253 species. *Economic Botany* 28:178–236.
- Barker, R. J., and R. J. H. McKenzie. 1972. Heritability of oil content in oats, *Avena sativa* L. *Crop Science* 12:201–202.
- Baud, S., and L. Lepiniec. 2010. Physiological and developmental regulation of seed oil production. *Progress in Lipid Research* 49: 235–249.
- Baud, S., M. S. Mendoza, A. To, E. Harscoet, L. Lepiniec, and B. Dubreucq. 2007. *WRINKLED1* specifies the regulatory action of *LEAFY COTYLEDON2* towards fatty acid metabolism during seed maturation in *Arabidopsis*. *Plant Journal* 50: 825–828.
- Beilstein, M. A., I. A. Al-Shehbaz, S. Mathews, and E. A. Kellogg. 2008. Brassicaceae phylogeny inferred from *phytochrome A* and *ndhF* sequence data: tribes and trichomes revisited. *American Journal of Botany* 95: 1307–1327.
- Bolker, B. M., M. E. Brooks, C. J. Clark, S.W. Genage, J. R. Poulsen, M. H. H. Stevens, and J-S. S. White. 2008. Generalized linear mixed models: a practical guide for ecology and evolution. *Trends in Ecology and Evolution* 24: 127–135.
- Bretagnolle, F., A. Matejcek, S. Gregoire, X. Reboud, and S. Gaba. 2016. Determination of fatty acids content, global antioxidant activity and energy value of weed seeds from agricultural fields in France. *Weed Research* 56: 78–95.
- Carmona-Antoñanzas, G., D. R. Tocher, J. B. Taggart, and M. J. Leaver. 2013. An evolutionary perspective on Elovl5 fatty acid elongase: comparison of Northern pike and duplicated paralogs from Atlantic salmon. *BMC Evolutionary Biology* 13: 85.
- Chamberlain, S., C. Boettiger, K. Ram, V. Barve, and D. Mcglinn. 2014. rgbif: Interface to the Global Biodiversity Information Facility API. R Package version 0.5.0. Website: <https://github.com/ropensci/rgbif>.
- Collins, K. A., and Horn, D. J. 2012. The role of oil content and size in seed selection by wild birds. *Trans Illinois State Academy of Science* 105: 107–117.
- Comstock, V., J. H. Ford, and E. C. Gimore. 1969. Seed quality characteristics associated with the D locus of flax, *Linum usitatissimum* L. *Crop Science* 9: 513–514.

- Connell, J. H. 1971. On the role of natural enemies in preventing competitive exclusion in some marine animals and in rain forest trees. In: den Boer, P.J., Gradwell, G. R., editors, Dynamics of populations. Wageningen, Netherlands: Center for Agricultural Publication and Documentation. p. 298–312.
- Dean Rider, S. Jr., J. T. Henderson, R. E. Jerome, H. J. Edenberg, J. Romero-Severson, and J. Ogas. 2003. Coordinate repression of regulators of embryonic identity by *PICKLE* during germination in *Arabidopsis*. *Plant Journal* 35: 33–43.
- Ehrenschaft, M., and R. Brambl. 1990. Respiration and mitochondrial biogenesis in germinating embryos of maize. *Plant Physiology* 93: 295–304.
- El Bassam, N. 2010. Handbook of Bioenergy Crops, A Complete Reference to Species, Development and Applications. London, United Kingdom: Earthscan.
- Focks, N., and C. Benning. 1998. wrinkled1: a novel, low-seed-oil mutant of *Arabidopsis* with a deficiency in the seed-specific regulation of carbohydrate metabolism. *Plant Physiology* 118: 91–101.
- Gardin, A., C. Dürr, and N. Colbach. 2011. Prediction of germination rates of weed species: Relationship between germination speed parameters and species traits. *Ecological Modelling* 222: 626–636.
- Gaston, K. J., S. L. Chown, and K. L. Evans. 2008. Ecogeographical rules: elements of a synthesis. *Journal of Biogeography* 35: 483–500.
- Genter, C. F., J. F. Eheart, and W. N. Linkous. 1956. Effects of location, hybrid, fertilizer, and rate of planting on the oil and protein contents of corn grain. *Agronomy Journal* 48: 63–67.
- Gittleman, J. L., and M. Kot. 1990. Adaptation: Statistics and a null model for estimating phylogenetic effects. *Systematic Zoology* 39: 227–241.
- Hamilton, K. N., C. A. Offord, P. Cuneo, and M. A. Deseo. 2013. A comparative study of seed morphology in relation to desiccation tolerance and other physiological responses in 71 Eastern Australian rainforest species. *Plant Species Biology* 28: 51–62.
- Hartwig, E. E. 1973. Varietal development. In: Caldwell, B.E., editor. Soybeans: Improvement, Production and Uses. Madison: American Society of Agronomy. p. 187–210.
- Harwood, J. L. 1980. Plant acyl lipids: structure, distribution, and analysis. In: P. K. Stumpf and E. E. Conn, editors. The Biochemistry of Plants: A Comprehensive Treatise, Vol. 4. New York: Academic. p. 2–55.

- Hedley, C. 2001. Carbohydrates in grain legume seeds: improving nutritional quality and agronomic characteristics. Wallingford: CABI Publishing. p. 1–14
- Jako, C., A. Kumar, Y. Wei, J. Zou, D. L. Barton, E. M. Giblin, P. S. Covello, and D. C. Taylor. 2001. Seed-specific over-expression of an *Arabidopsis* cDNA encoding a diacylglycerol acyltransferase enhances seed oil content and seed weight. *Plant Physiology* 126: 861–874.
- Janzen, D.H. 1970. Herbivores and the number of tree species in tropical forests. *American Naturalist* 102: 592–595.
- Johnson, H. W., and R. L. Bernard. 1962. Soybean genetics and breeding. *Advances in Agronomy* 14: 149–222.
- Kapoor, V. K., A. S. Chawla, P. K. Soni, and K. L. Bedi. 1986. Studies on some Indian Seed Oils. *Fitoterapia* 57: 188–190.
- Katavic, V., D. W. Reed, D. C. Taylor, E. M. Giblin, D. L. Barton, J. Zou, S. L. Mackenzie, et al. 1995. Alteration of seed fatty acid composition by an ethyl methanesulfonate-induced mutation in *Arabidopsis thaliana* affecting diacylglycerol acyltransferase activity. *Plant Physiology* 108: 399–409.
- Kelly, A. A., E. Shaw, S. J. Powers, S. Kurup, and P. J. Eastmond. 2013a. Suppression of the Sugar-dependent1 triacylglycerol lipase family during seed development enhances oil yield in oilseed rape (*Brassica napus* L.). *Plant Biotechnology Journal* 11: 355–361.
- Kelly, A. A., H. van Erp, A. L. Quettier, E. Shaw, G. Menard, S. Kurup, and P. J. Eastmond. 2013b. The Sugar-dependent1 lipase limits triacylglycerol accumulation in vegetative tissues of *Arabidopsis*. *Plant Physiology* 162: 1282–1289.
- Kim, M. J., S. W. Yang, H. Z. Mao, S. P. Veena, J. L. Yin, and N. H. Chua. 2014. Gene silencing of Sugar-dependent 1 (JcSDP1), encoding a patatin-domain triacylglycerol lipase, enhances seed oil accumulation in *Jatropha curcas*. *Biotechnology for Biofuels* 7: 36.
- Kittock, D. L., and J. H. Williams. 1970. Effects of plant population on castor bean yield. *Agronomy Journal* 62: 527–529.
- Kleinman, R., F. R. Earle, S. G. Yates, and Q. Jones. 1965. Search for new industrial oils. XII. Fifty-eight Euphorbiaceae oils, including one rich in vernolic acid. *Journal of the American Oil Chemists' Society* 42: 169–172.

- Lambinon, J., L. Delvosalle, J. Duvigneaud (avec la collaboration de Geerink, D., J. Lebeau, R. Schumacker, H. Vannerom). 2004. Nouvelle flore de la Belgique du G. D. de Luxembourg, du Nord de la France et des régions voisines. Belgique: Jardin botanique national de Belgique.
- Levin, D.A. 1974. The oil content of seeds: an ecological perspective. *American Naturalist* 108: 193–206.
- Linder, C. R. 2000. Adaptive evolution of seed oils in plants: Accounting for the biogeographic distribution of saturated and unsaturated fatty acids in seed oils. *American Naturalist* 156: 442–458.
- Liu, L., B. Zhao, D. Tan, and J. Wang. 2012. Phylogenetic relationships of Brassicaceae species based on *matk* sequences. *Pakistan Journal of Botany* 44: 619–626.
- Lüttge, U. 2012. A contest of lipids: The oil-carbohydrate-protein complement of plant seed storage. *European Journal of Lipid Science and Technology* 114: 101–102.
- Matthäus, B. 2012. The new database *Seed Oil Fatty Acids* (SOFA). *Lipid Technology*. 24: 230–234.
- Mayer, A. M., and A. Poljakoff-Mayber. 1963. The germination of seeds. New York: Macmillan. p. 236.
- McNair, J. B. 1930. A study of some characteristics of vegetable oils. Chicago: Field Museum of Natural History.
- Miranda, Z. F. S., C. A. A. Arias, J. F. F. Toledo, and M. F. Oliveira. 1998. Soybean seed oil content: genetic control under different photoperiods. *Genetics and Molecular Biology* 21: 387–394.
- Morohashi, Y. 1986. Patterns of mitochondrial development in reserve tissue of germinated seeds: A survey. *Physiologia Plantarum* 66: 653–658.
- Morohashi, Y., and J. D. Bewley. 1980. Development of mitochondrial activities in pea cotyledons during and following germination of the axis. *Plant Physiology* 66: 70–73.
- Münkemüller, T., S. Lavergne, B. Bzeznik, S. Dray, T. Jombart, K. Schiffers, and W. Thuiller. 2012. How to measure and test phylogenetic signal. *Methods in Ecology and Evolution* 3: 743–756.
- Nagel, M., and A. Börner. 2010. The longevity of crop seeds stored under ambient conditions. *Seed Science Research* 20: 1–12.

Ogas, J., S. Kaufmann, J. Henderson, and C. Somerville. 1999. *PICKLE* is a CHD3 chromatin-remodeling factor that regulates the transition from embryonic to vegetative development in *Arabidopsis*. *Proceedings of the National Academy of Sciences USA* 96: 13839–13844.

Ohlrogge, J., and J.G. Jaworski. 1997. Regulation of fatty acid synthesis. *Annual Review Plant Physiology Plant Molecular Biology* 48: 109–136.

O'Neill, C. M., S. Gill, D. Hobbs, C. Morgan, and I. Bancroft. 2003. Natural variation for seed oil composition in *Arabidopsis thaliana*. *Phytochemistry* 64: 1077–1090.

R Development Core Team, 2013. R: A language and environment for statistical computing. R Foundation for Statistical Computing, Vienna, Austria. ISBN 3-900051-07-0. Website: <http://www.R-project.org>.

Rees, M., and M. J. Long. 1992. Germination biology and the ecology of annual plants. *American Naturalist* 139: 484–508.

Santos-Mendoza, M., B. Dubreucq, S. Baud, F. Parcy, M. Caboche, and L. Lepiniec. 2008. Deciphering gene regulatory networks that control seed development and maturation in *Arabidopsis*. *Plant Journal* 54: 608–620.

Sanyal, A., and G. Decocq. 2016. Adaptive evolution of seed oil content in angiosperms: accounting for the global patterns of seed oils. *BMC Evolutionary Biology* 16: 187.

Sanyal, A., and C. R. Linder. 2013. Plasticity and constraints on fatty acid composition in the phospholipids and triacylglycerols of *Arabidopsis* accessions grown at different temperatures. *BMC Plant Biology* 13: 63.

Seigler, D. S., 1979. Toxic seed lipids. In: Rosenthal, G.A., D.H. Janzen, editors. *Herbivores*. New York: Academic. p. 161–199.

Shen, B., K. W. Sinkevicius, D. A. Selinger, and M. C. Tarczynski. 2006. The homeobox gene *GLABRA2* affects seed oil content in *Arabidopsis*. *Plant Molecular Biology* 60: 377–387.

Spector, W. S. 1956. *Handbook of biological data*. New York: Saunders. p. 584.

Sun, X., H. Pang, M. Li, B. Peng, H. Guo, Q. Yan, and Y. Hang. 2013. Evolutionary pattern of the *FAEI* gene in Brassicaceae and its correlation with the erucic acid trait. *PLoS ONE* 8, e83535.

Tan, H., X. Yang, F. Zhang, X. Zheng, C. Qu, J. Mu, F. Fu, et al. 2011. Enhanced seed oil production in canola by conditional expression of *Brassica napus* *LEAFY COTYLEDON1* and *LEC1-LIKE* in developing seeds. *Plant Physiology* 156: 1577–1588.

- Theodoulou, F. L., and P. J. Eastmond. 2012. Seed storage oil catabolism: a story of give and take. *Current Opinion in Plant Biology* 15: 322–328.
- Tianfu, H., W. Jinling, Y. Qingkai, G. Junyi. 1997. Effects of post-flowering photoperiod on chemical composition of soybeans. *Zhongguo Nongye Kexue*. 30: 47–53.
- van Erp, H., A. A. Kelly, G. Menard, and P. J. Eastmond. 2014. Multigene engineering of triacylglycerol metabolism boosts seed oil content in *Arabidopsis*. *Plant Physiology* 165: 30–36.
- Vigeolas, H., P. Waldeck, and T. Zank. 2007. Geigenberger P. Increasing seed oil content in oilseed rape (*Brassica napus* L.) by over-expression of a yeast glycerol-3-phosphate dehydrogenase under the control of a seed-specific promoter. *Plant Biotechnology Journal* 5: 431–441.
- Wang, H. W., B. Zhang, Y. J. Hao, J. Huang, A. G. Tian, Y. Liao, J. S. Zhang, and S. Y. Chen. 2007. The soybean Dof-type transcription factor genes, GmDof4 and GmDof11, enhance lipid content in the seeds of transgenic *Arabidopsis* plants. *Plant Journal* 52: 716–729.
- Warwick, S. I., A. Francis, and R. K. Gugel. 2009. Guide to Wild Germplasm: Brassica and allied crops (tribe Brassiceae, Brassicaceae), Agriculture and Agri-Food Canada.
- Weselake, R. J., S. Shah, M. Tang, P. A. Quant, C. L. Snyder, T. L. Furukawa-Stoffer, W. Zhu, et al. 2008. Metabolic control analysis is helpful for informed genetic manipulation of oilseed rape (*Brassica napus*) to increase seed oil content. *Journal of Experimental Botany* 59: 3543–3549.
- Westoby, M., E. Jurado, and M. Leishman. 1992. Comparative evolutionary ecology of seed size. *Trends in Ecology & Evolution* 7: 368–372.
- Wilkinson, L. 2010. SYSTAT. Version 13.0. SPSS, Chicago, Illinois, USA.
- Zou, J., V. Katavic, E. M. Giblin, D. L. Barton, S. L. MacKenzie, W. A. Keller, X. Hu, and D. C. Taylor. 1997. Modification of seed oil content and acyl composition in the Brassicaceae by expression of a yeast *sn-2* acyltransferase gene. *Plant Cell* 9: 909–923.

TABLE 1. Seed oil content of Brassicaceae species in reference to their ecological and geographical parameters.

Biomes	N	Min	Max	Mean	SD	SE
Oil Content (%)						
Herbs						
Temperate	214	4	48.7	26.4	8.3	0.568
Subtropical	39	6	40.4	28.6	7.9	1.272
Tropical	31	12.2	42	30	7.1	1.278
18:0 (%)						
Temperate	162	0.1	4.91	1.68	1.0	0.08
Subtropical	33	0.3	4.91	1.87	1.3	0.231
Tropical	27	0.2	4.91	1.69	1.0	0.186
18:3 (%)						
Temperate	153	1.23	69.8	27.2	15.93	1.288
Subtropical	27	1.23	56.4	20.94	12.84	2.426
Tropical	22	1.23	66	23.11	19.1	3.982
20:0 (%)						
Temperate	73	0.2	3.6	1.25	0.713	0.083
Subtropical	22	0.49	3	1.29	0.725	0.155
Tropical	14	0.4	2.1	1.33	0.599	0.16

TABLE 2. Correlation between seed oil content and constituent fatty acids in seed oil in *A. thaliana*.

	Oil	16:0	18:0	18:1	18:2	18:3	20:0	20:1	20:2
Oil									
16:0	-0.25								
18:0	0.178	0.28							
18:1	0.226	-0.186	0.179						
18:2	-0.248	-0.047	-0.263	-0.106					
18:3	0.168	-0.122	-0.099	-0.246	-0.275				
20:0	0.011	0.408	0.602	-0.148	-0.212	0.009			
20:1	0.249	0.105	0.354	0.078	-0.446	0.152	0.511		
20:2	-0.101	-0.066	-0.183	-0.583	0.362	0.207	0.123	0.102	
22:1	-0.135	-0.063	-0.080	-0.473	-0.073	0.44	0.287	0.381	0.462

Numbers in bold indicate that correlation is significant at $P = 0.05$.

TABLE 3. Seed oil content in different tribes, genera, and species in Brassicaceae.

Tribes	Genera	Species	Species name	Mean Oil content (%)
Camelineae	3	4	<i>Arabidopsis thaliana</i>	39.8
			<i>Capsella bursa-pastoris</i>	31.8
			<i>Camelina microcarpa</i>	31.2
			<i>Turritis glabra</i>	38
Physarieae	1	1	<i>Dimorphocarpa wislizeni</i>	3.9
Descurainieae	1	1	<i>Descurainia sophia</i>	35.7
Lepideae	1	1	<i>Lepidium draba</i>	15.9
Cardamineae	1	2	<i>Barbarea vulgaris</i>	28.6
			<i>Planodes virginicum</i>	25.5
Alysseae	1	1	<i>Alyssum canescens</i>	20.9
Euclidieae	2	2	<i>Euclidium syriacum</i>	3.4
			<i>Sterigosella africana</i>	31
Hesperideae	1	1	<i>Hesperis matronalis</i>	29.8
Anchonieae	1	1	<i>Bunias orientalis</i>	11.1
Sisymbrieae	1	1	<i>Sisymbrium altissimum</i>	35
Brassiceae	3	3	<i>Brassica oleracea</i>	38
			<i>Hirschfeldia incana</i>	19.1
			<i>Cakile maritima</i>	44.7
Isatideae	2	2	<i>Isatis tinctoria</i>	23.3
			<i>Myagrurn perfoliatum</i>	10.9
Arabideae	1	1	<i>Arabis alpina</i>	28
Thlaspideae	2	2	<i>Alliaria petiolata</i>	29
			<i>Thlaspi arvense</i>	29.5
Calepineae	1	1	<i>Goldbachia laevigata</i>	48

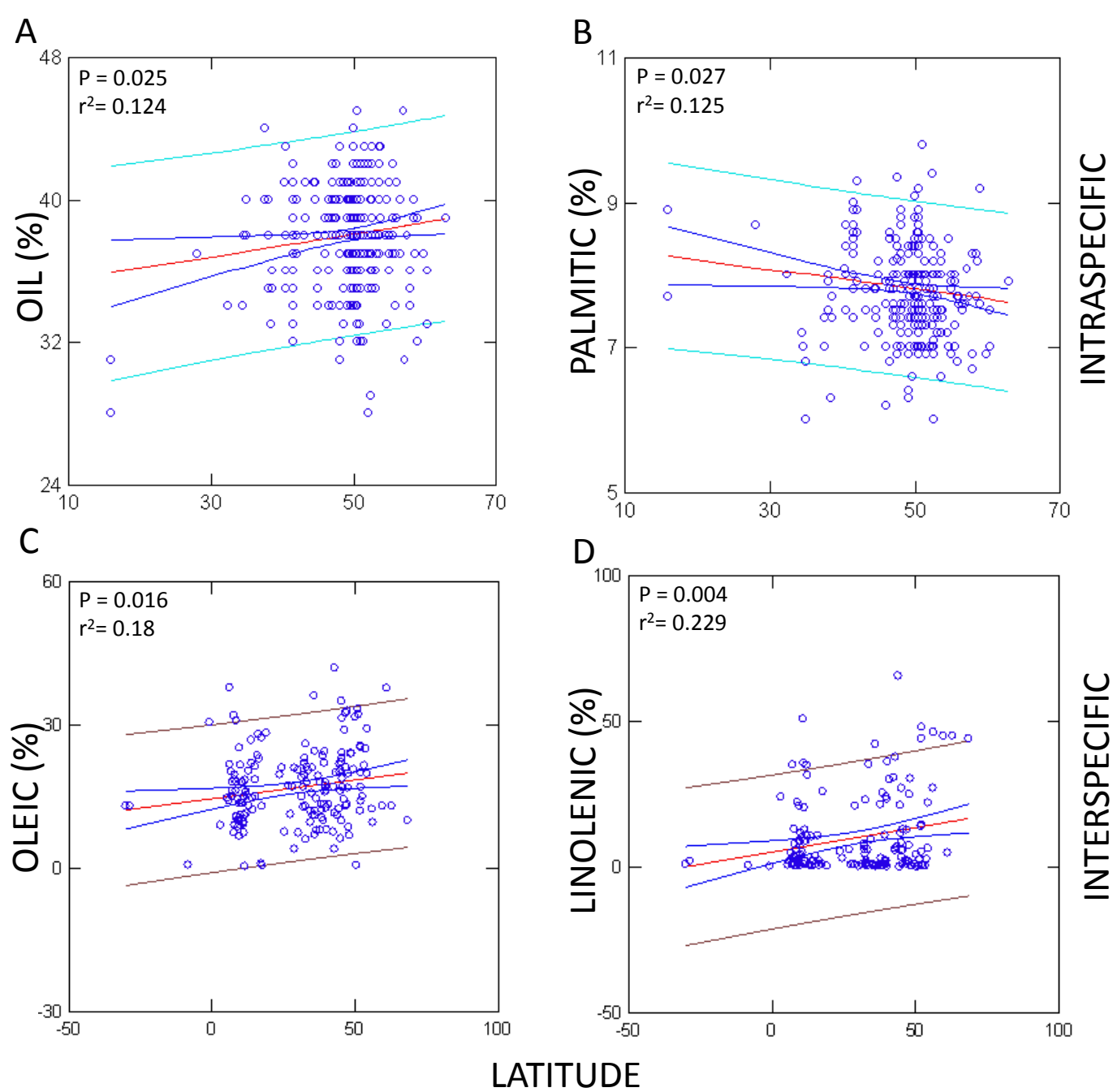
Aethionemeae	1	1	<i>Aethionema saxatile</i>	21.5
--------------	---	---	----------------------------	------

FIGURE 1 (A) Regression of seed oil content on latitude in *Arabidopsis thaliana*. (B) Regression of palmitic acid proportions on latitude in *Arabidopsis thaliana*. The red line is the best-fitted line for the regression model. The dark blue line shows the 95% confidence intervals, and the light blue line indicates the 95% prediction interval. (C) Regression of oleic acid proportions on latitude in Brassicaceae. (D) Regression of linolenic acid proportions on latitude in Brassicaceae. As in (B), the red line is the best-fitted line for the regression model, and the dark blue line shows the 95% confidence intervals. The brown line indicates the 95% prediction interval.

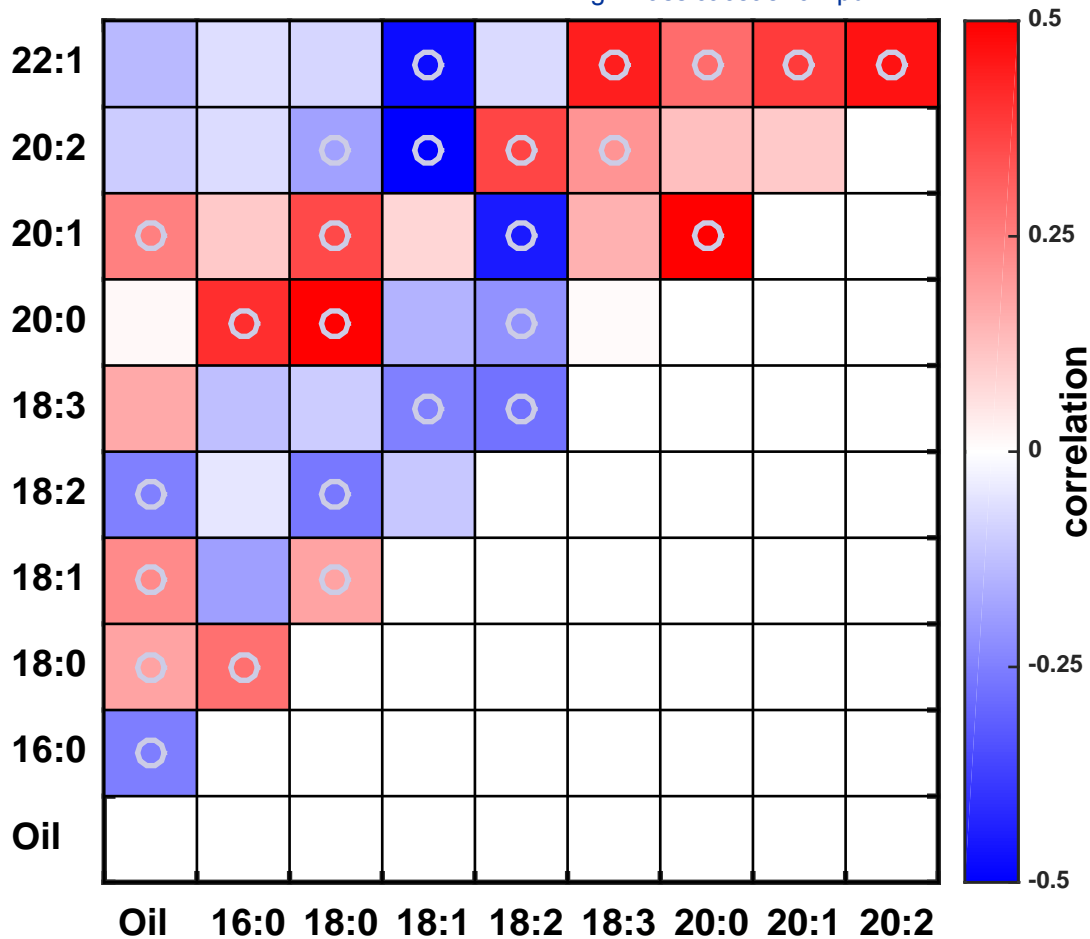
FIGURE 2. Correlation between SOC and the constituent fatty acids. Circles in the cells indicate significant negative and positive correlations at p -value = 0.05. The numerical bins for the correlations corresponding to the shading are shown in the bar to the right.

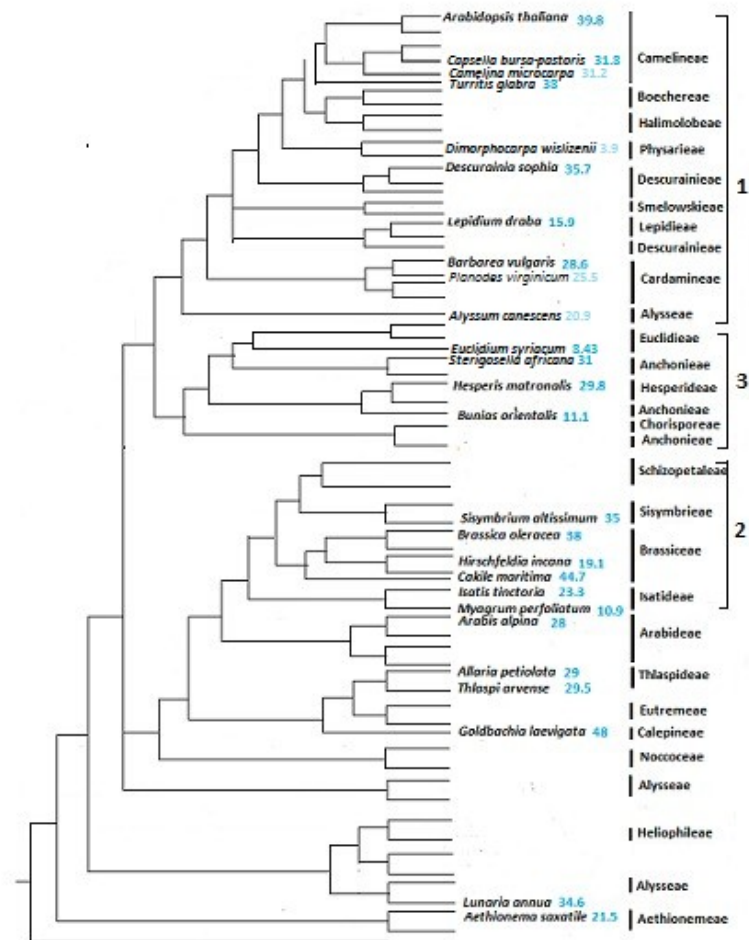
FIGURE 3. Pruned phylogenetic tree adapted from Beilstein et al. (2008) showing the SOC pattern of the species. The numbers in blue indicate the SOC of the species. Only the species for which SOC information is available has been shown on the tree.

Figure 1



[Click here to download Figure Fig2BrassicaceaeAJB.pdf](#)





Sanyal et al. - *American Journal of Botany* 2018 - Appendix S1. DOI:

Appendix S1. The seed oil content, habit, biogeographical distribution, latitude, and number of occurrences of the herbaceous Brassicaceae species.

Species	% Oil			Habit	Distribution			Latitude		
	No. obs.	Mean	SE		Temperate	Subtropical	Tropical	Min.	Max.	No. occurrences
<i>Alliaria petiolata</i>	3	29.03	5.08	26.2	Herb	x	x	-40.76	68.5	94,926
<i>Aethionema saxatile</i>	1	21.5		21.5	Herb	x	x	-40.76	59.37	1,133
<i>Alyssoides utriculata</i>	3	12.33	3.48	13	Herb	x		38.17	50.66	43
<i>Alyssum alyssoides</i>	3	18.1	0.06	18.1	Herb	x		-45.88	65.03	9,550
<i>Alyssum constellatum</i>	2	9.75	0.25	9.75	Herb	x		39.17	39.17	29
<i>Alyssum dasycarpum</i>	2	29.1	0.10	29.1	Herb	x	x	35.85	36.17	4
<i>Alyssum desertorum</i>	3	21.3	0.35	21	Herb	x	x	20.00	58.14	423
<i>Alyssum granatense</i>	1	12.2		12.2	Herb	x	x	30.37	42.51	1,240
<i>Alyssum murale</i>	1	25		25	Herb	x		32.99	64.61	146
<i>Alyssum saxatile</i>	4	14.58	2.04	15.5	Herb	x		-45.28	57.84	286
<i>Alyssum tortuosum</i>	2	25.2	0.2	25.2	Herb	x		38.4	46.88	12
<i>Arabidopsis neglecta</i>	1	32.4		32.4	Herb	x		45.6	45.6	1
<i>Arabidopsis thaliana</i>	2	39.75	3.25	39.75	Herb	x	x	-51.61	70.22	58,413
<i>Arabis alpina</i>	5	28	2.45	30.6	Herb	x		-41.43	79.62	7,301
<i>Arabis blepharophylla</i>	1	20		20	Herb	x		35.91	57.60	292
<i>Arabis corymbiflora</i>	1	20.9		20.9	Herb	x		40.28	50.76	69
<i>Arabis glabra</i>	3	35.33	2.52	37.7	Herb	x	x	-35.50	70.12	8,993
<i>Arabis hirsuta</i>	1	34		34	Herb	x		24.93	70.98	22,802
<i>Arabis laevigata</i>	1	38.7		38.7	Herb	x		33.20	49.82	177
<i>Arabis procurrens</i>	1	25		25	Herb	x		41.38	60.84	41
<i>Arabis rosea</i>	1	25.2		25.2	Herb	x		36.95	57.67	201
<i>Arabis soyeri</i>	1	20.1		20.1	Herb	x		42.10	48.56	295
<i>Arabis virginica</i>	1	19.1		19.1	Herb	x		31.34	40.25	272
<i>Aubrieta gracilis</i>	1	15.9		15.9	Herb	x		38.68	40.33	93
<i>Aubrieta kotschyi</i>	1	5		5	Herb	x		29.42	37.88	7
<i>Barbarea praecox</i>	2	25.5	5.5	25.5	Herb	x	x	-47.22	60.66	2,287
<i>Barbarea stricta</i>	1	30.5		30.5	Herb	x		-43.53	71.08	9,574
<i>Barbarea vulgaris</i>	4	28.63	1.46	29.25	Herb	x	x	-46.28	78.21	63,389
<i>Berteroa incana</i>	4	26.73	1.72	28.3	Herb	x		34.25	69.96	12,262
<i>Biscutella auriculata</i>	1	33.9		33.9	Herb	x	x	28.10	52.28	1,578
<i>Boreava orientalis</i>	2	41.1	0.1	41.1	Herb	x		33.6	36.72	3
<i>Brassica albograbra</i>	1	23.3		23.3	Herb	x	x	25.01	25.01	2
<i>Brassica campestris</i>	10	37.49	2.15	39	Herb	x	x	-29	61.53	352
<i>Brassica carinata</i>	2	28.05	1.65	28.05	Herb	x	x	-12.55	57.70	490
<i>Brassica chinensis</i>	1	35.8		35.8	Herb	x	x	-37.23	27.57	54
<i>Brassica elongata</i>	1	17.5		17.5	Herb	x		-34.8	65.02	398
<i>Brassica juncea</i>	4	32.45	1.62	33.65	Herb	x	x	-35.58	65.95	2,040

Sanyal et al. - *American Journal of Botany* 2018 - Appendix S1. DOI:

<i>Brassica napus</i>	10	41.95	1.51	42.75	Herb	x		x	-54.33	70.27	19,831
<i>Brassica nigra</i>	4	30.03	1.31	30.9	Herb	x		x	-43.95	65.04	12,925
<i>Brassica oleifera</i>	1	25		25	Herb	x			44.67	44.67	1
<i>Brassica oleracea</i>	1	38		38	Herb	x	x		-46.89	69.93	6,338
<i>Brassica oleracea</i> subsp. <i>capitata</i>	1	25.9		25.9	Herb	x	x	x	13.27	60.24	278
<i>Brassica rapa</i>	3	31.67	0.65	31.4	Herb	x		x	-49.76	70.59	18,458
<i>Brassica tournefortii</i>	7	28.83	1.14	29.6	Herb	x		x	-44.39	63.43	4,556
<i>Bunias erucago</i>	1	12.8		12.8	Herb	x			-7.3	62.31	539
<i>Bunias orientalis</i>	1	11.1		11.1	Herb	x			39.7	66.88	10,184
<i>Cakile edentula</i>	1	48.7		48.7	Herb	x			-46.58	60.03	1,053
<i>Cakile maritima</i>	2	44.7	0.9	44.7	Herb	x			-42.21	78.35	11,562
<i>Calepina irregularis</i>	1	13		13	Herb	x			-33.20	52.18	960
<i>Camelina microcarpa</i>	3	31.07	2.98	34	Herb	x			-44.18	70.03	5,199
<i>Camelina rumelica</i>	2	35.1	0.1	35.1	Herb	x	x	x	-25.63	56.05	127
<i>Camelina sativa</i>	2	28.1	5.1	28.1	Herb	x		x	-37.02	70.03	3,538
<i>Capsella bursa-pastoris</i>	23	31.79	0.87	31.2	Herb	x	x	x	-54.33	78.92	171,757
<i>Capsella grandiflora</i>	1	19.6		19.6	Herb	x			35.49	40.04	24
<i>Capsella rubella</i>	1	32.4		32.4	Herb	x			20.05	61.60	2,048
<i>Cardamine amara</i>	1	29		29	Herb	x			39.1	68.43	32,123
<i>Cardamine graeca</i>	1	12		12	Herb	x			24.15	41.34	71
<i>Cardamine hirsuta</i>	1	25		25	Herb	x		x	-51.82	69.45	78,477
<i>Cardamine impatiens</i>	1	36		36	Herb	x		x	23.13	64.06	7,778
<i>Cardaria draba</i>	2	17.6	1.7	17.6	Herb	x			-50.02	65.04	4,856
<i>Carrichtera annua</i>	3	17.0	1.8	18.6	Herb	x			-43.53	57.48	4,890
<i>Caulanthus inflatus</i>	2	30.25	0.25	30.25	Herb	x			34.86	37	247
<i>Cheiranthus cheiri</i>	3	24.4	2.64	23	Herb	x			-45.88	63.44	513
<i>Cheirantus maritimus</i>	1	19		19	Herb	x			-48.22	63.7	395
<i>Clypeola jonthlaspi</i>	1	12.1		12.1	Herb	x			30.51	45.98	1,789
<i>Cochlearia officinalis</i>	1	21.1		21.1	Herb	x			39.1	83.08	15,828
<i>Coincya longirostra</i>	2	22.3	0.9	22.3	Herb	x			36.1	40.65	199
<i>Coincya monensis</i> subsp. <i>hispida</i>	1	16.0		16.0	Herb	x			39.0	40.88	10
<i>Coincya monensis</i> subsp. <i>nevadensis</i>	1	21.9		21.9	Herb	x			36.10	53.17	35
<i>Coincya transtagana</i>	1	15.8		15.8	Herb	x			37	40.1	26
<i>Conringia orientalis</i>	1	26.7		26.7	Herb	x			30.33	78.25	2,676
<i>Conringia planisiliqua</i>	2	34.2	0.2	34.2	Herb	x			30.20	60.49	64
<i>Coronopus didymus</i>	3	32.2	8.75	40.9	Herb	x		x	-50.85	65.04	15,491
<i>Coronopus squamatus</i>	1	15		15	Herb	x			-45.90	65.04	15,615
<i>Crambe abyssinica</i>	20	38.6	1.36	38.65	Herb	x	x	x	-5.9	59.67	22
<i>Crambe cordifolia</i>	4	22.78	2.23	24.35	Herb	x		x	49.25	54.88	41
<i>Crambe maritima</i>	1	32.2		32.2	Herb	x			40.1	63.88	5,747

Sanyal et al. - *American Journal of Botany* 2018 - Appendix S1. DOI:

<i>Crambe orientalis</i>	2	43.05	0.05	43.05	Herb	x			31.58	40.57	37
<i>Crambe tataria</i>	3	33.23	0.12	33.3	Herb	x			45.82	59.37	11
<i>Dentaria bulbifera</i>	1	11.5		11.5	Herb	x			36.25	64.13	757
<i>Descurainia pinnata</i>	1	38.4		38.4	Herb	x			-38.02	61.49	3,236
<i>Descurainia pinnata</i> subsp. <i>pinnata</i>	1	38		38	Herb	x			28.8	50.63	16
<i>Descurainia sophia</i>	12	37.9	1.23	38.6	Herb	x	x		-54.04	78.21	15,411
<i>Diplotaxis muralis</i>	1	22.6		22.6	Herb	x	x	x	-46.41	65.73	9,366
<i>Diplotaxis tenuifolia</i>	2	36.05	10.7	36.05	Herb	x			-49.76	65.64	13,089
<i>Diplotaxis viminea</i>	1	22.1		22.1	Herb	x			31.69	58.54	727
<i>Dithyrea californica</i>	1	14		14	Herb		x		13	36	809
<i>Dithyrea wislizenii</i>	2	5.95	2.05	5.95	Herb	x	x		26.75	38.88	28
<i>Draba aurea</i>	1	22		22	Herb	x			32.69	71.37	618
<i>Draba cinerea</i>	1	22		22	Herb	x			54.58	82.25	581
<i>Draba fladnizensis</i>	1	23		23	Herb	x			37.92	81.42	1,579
<i>Draba incana</i>	2	14	4	14	Herb	x			41.31	71.16	6,075
<i>Draba magellanica</i>	1	22.6		22.6	Herb	x			-71.25	69.53	170
<i>Draba montana</i>	1	12		12	Herb	x			41.10	59.37	97
<i>Draba rupestris</i>	1	30		30	Herb	x			45.33	80.39	4,095
<i>Enarthrocarpus strangulatus</i>	1	40		40	Herb	x	x	x	30.01	32.85	15
<i>Eruca longirostris</i>	1	26		26	Herb	x	x		-43.61	69.73	614
<i>Eruca sativa</i>	7	27.6	2.11	27.8	Herb	x		x	-43.55	65.95	803
<i>Erucaria hispanica</i>	1	32		32	Herb	x			24	63.41	295
<i>Erucastrum abyssinicum</i>		34		34	Herb	x		x	7.17	59.32	33
<i>Erucastrum nasturtiifolium</i>	1	25.9		25.9	Herb	x			36.1	54.46	3,078
<i>Erucastrum strigosum</i>	1	28		28	Herb	x	x		-34.63	-25.63	34
<i>Erysimum canescens</i>	1	31		31	Herb	x	x		19.53	36.10	7
<i>Erysimum cheiranthoides</i>	1	18		18	Herb	x			25.56	78.26	25,493
<i>Erysimum crepidifolium</i>	1	21		21	Herb	x			47.76	62.25	285
<i>Erysimum cuspidatum</i>	1	33		33	Herb	x			39.85	54.05	11
<i>Erysimum helveticum</i>	1	29		29	Herb	x			42.57	47.48	41
<i>Erysimum hieraciifolium</i>	2	35.85	0.85	35.85	Herb	x			27.5	68.18	1,008
<i>Erysimum linifolium</i>	1	29		29	Herb	x			36.1	43.17	268
<i>Erysimum marschallianum</i>	1	33.1		33.1	Herb	x			42.7	59.93	270
<i>Erysimum odoratum</i>	3	24.37	5.7	29.4	Herb	x			42.1	54.16	1,272
<i>Erysimum perofskianum</i>	2	24.65	10.7	24.65	Herb	x			39.96	47.10	2
<i>Erysimum pulchellum</i>	1	29.6		29.6	Herb	x			40.57	50.76	9
<i>Erysimum repandum</i>	2	31.1	8.9	31.1	Herb	x			-49.76	73.12	1,028
<i>Erysimum sylvestre</i>	1	30		30	Herb	x			38.74	52.36	177
<i>Erysimum wittmannii</i>	1	32		32	Herb	x			45.43	47.46	4
<i>Fibigia clypeata</i>	3	14.23	2.28	12	Herb	x			30.68	46.90	222

Sanyal et al. - *American Journal of Botany* 2018 - Appendix S1. DOI:

<i>Goldbachia laevigata</i>	1	48		48	Herb	x		28	42.6	112
<i>Heliophila longifolia</i>	1	21.6		21.6	Herb	x		-37	59.43	48
<i>Hesperis laciniata</i>	1	19.3		19.3	Herb	x		36	43.97	167
<i>Hesperis matronalis</i>	3	29.83	2.07	31.8	Herb	x		-46.03	67.51	19,582
<i>Hirschfeldia incana</i>	5	19.14	4.89	22.6	Herb	x	x	-49.96	66.88	8,227
<i>Hornungia petraea</i>	1	24.7		24.7	Herb	x		30.83	60.36	5,562
<i>Hugueninia tanacetifolia</i>	1	24.9		24.9	Herb	x		42	47.5	69
<i>Iberis amara</i>	5	22.4	2.78	26	Herb	x		-45.05	65.02	2,542
<i>Iberis contracta</i>	1	9.1		9.1	Herb	x		36.10	43.71	90
<i>Iberis pruitii</i>	1	15		15	Herb	x		36.1	59.37	114
<i>Iberis umbellata</i>	3	24.73	1.07	25.6	Herb	x		-45.03	67.41	1,338
<i>Isatis aleppica</i>	1	9		9	Herb	x		31.5	34.3	670
<i>Isatis aucheri</i>	2	33.1	0.1	33.1	Herb	x		37.37	37.73	2
<i>Isatis glauca</i>	1	4		4	Herb	x		38.7	39.88	2
<i>Isatis tinctoria</i>	4	23.25	6.22	21.5	Herb	x		-33.92	69.03	4,289
<i>Kernera saxatilis</i>	1	28.3		28.3	Herb	x		36.1	49.78	663
<i>Lepidium apetalum</i>	1	21		21	Herb	x	x	19.33	48.49	281
<i>Lepidium campestre</i>	1	13.9		13.9	Herb	x		-46.13	66.13	11,893
<i>Lepidium cuneiforme</i>	1	20		20	Herb	x		25.01	28.62	5
<i>Lepidium graminifolium</i>	1	27.4		27.4	Herb	x		31.49	54.36	2,182
<i>Lepidium heterophyllum</i>	1	19		19	Herb	x		-43.64	60.71	7,707
<i>Lepidium lasiocarpum</i>	1	23.5		23.5	Herb	x		9.54	41.33	1,776
<i>Lepidium perfoliatum</i>	1	19.2		19.2	Herb	x		-50.02	65.75	1,334
<i>Lepidium sativum</i>	2	20.45	1.45	20.45	Herb	x		-49.76	69.04	1,531
<i>Lepidium virginicum</i>	2	19.45	0.25	19.45	Herb	x		-41.6	64.2	7,326
<i>Lesquerella angustifolia</i>	1	26.2		26.2	Herb	x		34.02	34.03	2
<i>Lesquerella argyraea</i>	2	26.9		26.9	Herb	x		20.89	30.30	65
<i>Lesquerella arizonica</i>	1	24.7		24.7	Herb	x		31.55	37.53	56
<i>Lesquerella densipila</i>	1	24.4		24.4	Herb	x		35.5	35.94	22
<i>Lesquerella engelmannii</i>	3	17.37	3.16	19.8	Herb	x		33.30	33.38	3
<i>Lesquerella fendleri</i>	6	23.38	0.86	23.55	Herb	x		22.11	38.47	329
<i>Lesquerella globosa</i>	1	39.4		39.4	Herb	x		35.5	37	9
<i>Lesquerella gordonii</i>	3	27.2	0.83	26.8	Herb	x		30.33	37.63	218
<i>Lesquerella gracilis</i>	1	32.7		32.7	Herb	x		25.9	39.49	38
<i>Lesquerella grandiflora</i>	2	32	5.2	32	Herb	x		28.35	29.17	4
<i>Lesquerella lasiocarpa</i>	3	26.17	3.37	28.6	Herb	x		22.25	28.63	9
<i>Lesquerella lescurii</i>	1	28.1		28.1	Herb	x		36.17	36.27	6
<i>Lesquerella lindheimeri</i>	2	23.45	2.05	23.45	Herb	x		27.67	28.5	2
<i>Lesquerella lyrata</i>	1	25.9		25.9	Herb	x		33	33	1
<i>Lesquerella ovalifolia</i>	1	24		24	Herb	x		34.35	39.89	113

Sanyal et al. - *American Journal of Botany* 2018 - Appendix S1. DOI:

<i>Lesquerella perforata</i>	1	23.4		23.4	Herb	x			35.5	36.23	8
<i>Lesquerella pinetorum</i>	1	26.6		26.6	Herb	x			31.99	34.78	13
<i>Lesquerella stonensis</i>	1	23.5		23.5	Herb	x			35.5	35.99	3
<i>Lesquerella wardii</i>	1	22.1		22.1	Herb	x			31.58	45.44	33
<i>Lobularia maritima</i>	3	32.53	1.96	33.1	Herb	x			-43.78	65.81	8,657
<i>Lunaria annua</i>	5	34.58	3.27	32.1	Herb	x			-44.27	63.44	11,381
<i>Lunaria rediviva</i>	1	27		27	Herb	x			25.38	60.39	1,887
<i>Malcolmia africana</i>	1	31		31	Herb	x			-3.7	60.49	1,009
<i>Malcolmia maritima</i>	1	20.4		20.4	Herb	x			-48.22	63.7	395
<i>Matthiola bicornis</i>	2	29.1	0.3	29.1	Herb	x			32.19	50.76	11
<i>Megacarpaea gigantea</i>	1	19.3		19.3	Herb	x			38.86	38.86	1
<i>Microsisymbrium lasiophyllum</i>	1	28		28	Herb	x			13	55.95	2,116
<i>Myagrum perfoliatum</i>	1	10.9		10.9	Herb	x			-36.73	64.28	464
<i>Nasturtiopsis arabica</i>	1	33		33	Herb	x	x		30.16	34.42	18
<i>Nasturtium officinale</i>	6	25.2	2.77	27.4	Herb	x	x	x	-49.67	65.0	58,870
<i>Neslia paniculata</i>	2	32.05	14.9	32.05	Herb	x			-41.43	70.03	5,196
<i>Parrya menziesii</i>	1	21		21	Herb	x			36.6	47.96	671
<i>Peltaria angustifolia</i>	1	32		32	Herb	x			30.68	33.32	18
<i>Peltaria turkmena</i>	1	37.7		37.7	Herb	x			38.86	59.37	1
<i>Pendulina lagascana</i>	1	30		30	Herb	x			36.0	42.66	356
<i>Physaria newberryi</i>	1	30.8		30.8	Herb	x			34.5	38.82	53
<i>Pringlea antiscorbutica</i>	1	25		25	Herb	x			-49.65	-46.36	42
<i>Pseuderucaria teretifolia</i>	1	27.2		27.2	Herb	x			34.52		3
<i>Psychine stylosa</i>	1	32.4		32.4	Herb	x			29.5	34.58	24
<i>Raphanus caudatus</i>	1	32		32	Herb	x		x			
<i>Raphanus maritimus</i> subsp. <i>landra</i>	1	39.7		39.7	Herb	x			38.86	38.86	124
<i>Raphanus raphanistrum</i>	2	35.45	4.55	35.45	Herb	x			-46.42	78.92	48,354
<i>Raphanus sativus</i>	13	38.22	1.88	39	Herb	x		x	-46.10	68.88	4,548
<i>Rapistrum perenne</i>	1	11.5		11.5	Herb	x			39.06	65.04	404
<i>Rapistrum rugosum</i>	4	23.75	8.43	25.35	Herb	x			-54.04	64.85	7,798
<i>Reboudia pinnata</i>	1	31		31	Herb	x			29.8	33.06	57
<i>Savignya parviflora</i>	1	19		19	Herb	x	x		24.44	33.35	36
<i>Schimpera arabica</i>	1	39		39	Herb	x	x		24.42	32	15
<i>Schivereckia doerfleri</i>	1	16.4		16.4	Herb	x			41.13	41.13	1
<i>Selenia grandis</i>	2	18.25	0.25	18.25	Herb	x					
<i>Sibara virginica</i>	1	31.1		31.1	Herb	x			31.34	40.25	272
<i>Sinapis alba</i>	1	19.4		19.4	Herb	x	x	x	-45.91	69.5	8,791
<i>Sinapis arvensis</i>	2	27.65	3.35	27.65	Herb	x	x		-54.17	78.25	64,598
<i>Sinapis dissecta</i>	1	35		35	Herb	x			37.98	38.10	36
<i>Sisymbrium altissimum</i>	1	35		35	Herb	x			-49.96	68.13	12,423

Sanyal et al. - *American Journal of Botany* 2018 - Appendix S1. DOI:

<i>Sisymbrium austriacum</i>	2	32.4	1.6	32.4	Herb	x		36.83	57.67	1,580
<i>Sisymbrium columnae</i>	2	26.6	4.4	26.6	Herb	x	x	-39.91	68.74	8,607
<i>Sisymbrium erysimoides</i>	3	30.57	2.41	30	Herb	x		-43.53	55.61	3,402
<i>Sisymbrium gariepinum</i>	1	32		32	Herb	x		-33.88	-23.38	35
<i>Sisymbrium irio</i>	3	22	5.2	22	Herb	x	x	-48.86	63.13	6,570
<i>Sisymbrium loeselii</i>	2	29.85	0.15	29.85	Herb	x		22.55	67.33	2,969
<i>Sisymbrium ochroleucum</i>	2	35.95	0.05	35.95	Herb	x	x	31.35	36.23	23
<i>Sisymbrium strictissimum</i>	1	35.6		35.6	Herb	x		45.17	63.5	351
<i>Stanleyella texana</i>	2	35.8	0.2	35.8	Herb	x		32.07	32.91	17
<i>Syrenia angustifolia</i>	2	21.45	4.55	21.45	Herb	x		38.39	54.36	34
<i>Syrenia siliculosa</i>	1	26		26	Herb	x		43.63	47.97	2
<i>Teesdalia nudicaulis</i>	1	32		32	Herb	x	x	37.0	59.93	14,059
<i>Thlaspi alliaceum</i>	1	26.6		26.6	Herb	x	x	13.26	53.26	336
<i>Thlaspi alpestre</i>	2	30.85	0.85	30.85	Herb	x	x	33.53	65.80	109
<i>Thlaspi alpinum</i>	1	21.6		21.6	Herb	x	x	40.1	53.7	18
<i>Thlaspi arvense</i>	6	29.05	2.0	30.05	Herb	x	x	33.0	78.92	34,378
<i>Thlaspi perfoliatum</i>	2	30.9	0.1	30.9	Herb	x		24.8	62.31	3,560
<i>Thysanocarpus radians</i>	1	10		10	Herb	x		32.84	42.95	298
<i>Torularia torulosa</i>	2	28.85	5.15	28.85	Herb	x	x	25.5	44.36	85
<i>Vella annua</i>	2	13.85	0.85	13.85	Herb	x		37.0	38.5	4,890

Sanyal et al. - *American Journal of Botany* 2018 - Appendix S2. DOI:

Appendix S2. Percentage seed oil content and occurrence data of the 323 accessions of *Arabidopsis thaliana*.

Accessions	% Oil	Latitude		Accessions	% Oil	Latitude	
		Min.	Max			Min.	Max
Aa-0 (N900)	35	51	51	Chi-0	43	53.8	53.8
Aa-0 (N934)	32	51	51	Cit-0	38	43.4	43.4
Abd-0	31	57.2	57.2	Chi-1	39	53.8	53.8
Ag-0 (N901)	35	45	45	Cnt-1	32	51.3	51.3
Ag-0 (N936)	34	45	45	Co-1	43	40.1	40.1
Ak-1	37	48	48	Co-2	36	40.1	40.1
An-1	37	51.2	51.2	Co-3	35	40.1	40.1
An-2	41	51.2	51.2	Co-4	38	40.1	40.1
Ang-0	34	50.3	50.3	Col-0	36	38.3	38.3
Ang-1	36	50	50	Ct-1	44	37.3	37.3
Blh-1	41	48	48	Cvi-0 (N1096)	31	15.1	15.1
Blh-2	43	48	48	Cvi-0 (N902)	28	15.1	15.1
Br-0	40	49.2	49.2	Da-0	42	49.9	49.9
Bs-1	38	47.5	47.5	Db-0	42	50.3	50.3
Bs-2	42	47.5	47.5	Db-1	41	50.3	50.3
Bs-5	39	47	48	Db-2	42	50	51
Bsch-0	38	50	50	Di-0	40	47	48
Bsch-2	38	50	50	Di-1	39	47	47
Bu-0	40	50.5	50.5	Dijon-G	39	47.3	47.3
Bu-2	36	50	51	Do-0	33	50.7	50.7
Bu-3	37	50	51	Dr-0	38	51.1	51.1
Bu-4	38	50	51	Dra-0	40	49.4	49.4
Bu-5	40	50	51	Dra-1	37	49.4	49.4
Bu-6	37	50	51	Dra-2	37	49.4	49.4
Bu-7	38	50	51	Edi-0	41	55.9	55.9
Bu-8	40	50	51	Ei-2	42	50.3	50.3
Bu-9	37	50	51	Ei-4	40	50.3	50.3
Bu-13	37	50	51	Ei-5	36	50	51
Bu-14	39	50	51	Ei-6	39	50	51
Bu-15	37	50	51	Eil-0	42	51.5	51.5
Bu-17	41	50	51	El-0	43	51.5	51.5
Bu-18	42	50	51	En-1	42	50	50
Bu-19	41	50	51	En-2	39	50	50
Bu-20	41	50	51	Ep-0	39	50.2	50.2
Bu-21	42	50	51	Er-0	41	49.6	49.6
Bu-22	39	50	51	Es-0	37	60.2	60.2

Bu-11	38	50	51	Est-0	39	58.3	58.3
Bu-23	40	50	51	Est-1	40	58.3	58.3
Bu-24	40	50	51	Estland	37	58.7	58.7
Bu-25	40	50	51	Et-0	40	44.6	44.6
Ber	41	55	55	Fe-1	40	48	48
Ba-1	37	56.5	56.5	Fi-0	35	50.5	50.5
Bay-0	39	49	49	Fi-1	37	50.5	50.5
Bch-1	38	49.5	49.5	Fr-2	43	50.1	50.1
Bch-3	43	49.5	49.5	Fr-3	44	50	50
Bch-4	43	49.5	49.5	Fr-4	40	50.1	50.1
Bd-0	40	52.5	52.5	Fr-5	38	50	50
Be-0	36	49	50	Fr-6	39	50	50
Be-1	40	49.7	49.7	Fr-7	35	50	50
Bl-1	41	44.5	44.5	Ga-0	45	50.3	50.3
Bla-1	42	41.7	41.7	Ga-2	36	50.3	50.3
Bla-2	42	41	42	Gd-1	42	53.5	53.5
Bla-3	41	41	42	Ge-0	39	46.5	46.5
Bla-4	37	41	42	Ge-1	40	46.5	46.5
Bla-5	37	41	42	Ge-2	36	46	47
Bla-6	38	41.7	41.7	Gie-0	38	50.6	50.6
Bla-10	41	41	42	Gr-1	41	47	47
Bla-11	41	41.7	41.7	Gr-2	41	47	47
Bla-12	37	42	42	Gr-3	38	47	47
Bla-14	38	42	42	Gr-4	40	47	47
Bur-0	40	54.1	54.1	Gr-5	42	47	47
C24	41	40.2	40.2	Gr-6	42	47	47
Cal-0	37	53.3	53.3	Gre-0	41	43.2	43.2
Ca-0	40	50.3	50.3	Gy-0	37	49	49
Can-0	37	29.2	29.2	H55	36	49	49
Cen-0	41	49	49	Hh-0	38	54.4	54.4
Cha-0	39	46	46	Ha-0	38	52.4	52.4
Cha-1	38	46	46	Hau-0	39	55.7	55.7
Condara	35	38.5	38.5	Hi-0	39	52	52
In-0	42	47.5	47.5	HI-0	38	52	53
Is-0	39	50.5	50.5	HI-2	41	51	51
Is-1	42	50.5	50.5	HI-3	39	52.1	52.1
Je-0	39	50.9	50.9	Hn-0	41	51.3	51.3
Je54	34	49	49	Hs-0	43	52.2	52.2

Jl-2	40	49.2	49.2	Ksk-1	33	54.6	54.6
Jl-3	40	49.2	49.2	Nw-4	35	50.5	50.5
Jl-4	41	49.2	49.2	Ob-0	34	50.2	50.2
Jm-0	39	49	49	Ob-1	37	50.2	50.2
Jm-1	38	49	49	Ob-2	39	50	51
Kas-1 (N903)	38	35	35	Ob-3	36	50	51
Kas-1 (N1264)	40	35	35	Old-1	36	53.2	53.2
Kb-0	40	50.2	50.2	Old-2	38	53.2	53.2
Kil-0	42	56	56	Or-0	32	50.4	50.4
Kin-0	41	44.5	44.5	Ost-0	33	60.3	60.3
Kl-0	41	51	51	Ove-0	40	53.3	53.3
Kl-1	37	51	51	Oy-0	36	60.4	60.4
Kl-2	40	51	51	Pa-1	40	38.1	38.1
Kl-3	42	51	51	Pa-2	38	38.1	38.1
Kl-4	42	51	51	Pa-3	35	38.1	38.1
Kl-5	41	51	51	Per-1	34	58	58
Kn-0	40	54	55	Per-2	36	58	58
Ko-2	37			Per-3	35	58	58
Kr-0	37	51.3	51.3	Petergof	39	59	59
Kro-0	39	50.1	50.1	Pf-0	35	48.5	48.5
La-0	42	52	53	Pi-0	34	47	47
La-1	38	52	53	Pi-2	39	47	47
Lan-0	38	55.7	55.7	Pla-0	33	41.5	41.5
Lc-0	38	57	57	Pla-1	34	41.5	41.5
Le-0	41	52.2	52.2	Pla-2	38	41	42
Ler-1	31	48	48	Pla-3	37	41.5	41.5
Li-1	39	50	51	Pla-4	36	41	42
Li-2	34	50	51	Pn-0	37	48.1	48.1
Li-2-1	39	50	51	Po-0	34	50	51
Li-3	36	50.4	50.4	Po-1	36	50.7	50.7
Li-3-3	32	50	51	Pog-0	38	49.3	49.3
Li-5	33	50	51	Pr-0	37	50.1	50.1
Li-5-2	38	50	51	Pt-0	36	53.5	53.5
Li-5-3	38	50	51	Ra-0	38	46	46
Li-6-1	38	50	51	Rak-2	37	49	49
Li-7	38	50.4	50.4	Rd-0	36	50.5	50.5
Li-8	40	50	51	Ri-0	41	49.2	49.2
Li-10	37	50	51	Rou-0	34	49.4	49.4

Lip-0	40	50	50	Rsch-0	37	56	57
Li-0	38	41.6	41.6	Rsch-4	37	56.3	56.3
Li-1	40	41.6	41.6	Ru-0	36	50	51
Li-2	40	41.6	41.6	Rubezhnoe-1	38	49	49
Lm-2	38	48	48	Sap-0	38	49.5	49.5
Lu-1	39	55.7	55.7	Sav-0	40	49.2	49.2
Lz-0	37	46	46	Se-0	35	38.3	38.3
Ma-0	34	50.8	50.8	Sei-0	34	46.5	46.5
Ma-2	34	50.8	50.8	Sf-1	37	41.8	41.8
Mc-0	45	54.6	54.6	Sf-2	40	41.8	41.8
Me-0	39	51.9	51.9	Sg-1	32	47.7	47.7
Mh-0 (N1366)	40	53	54	Sg-2	31	48	48
Mh-0 (N904)	41	53	54	Sh-0	39	51.7	51.7
Mh-1	43	51	51	Si-0	36	50.9	50.9
Mnz-0	35	50	50	Sorbo	33	38.4	38.4
Mr-0	40	44.2	44.2	Sp-0	35	52.5	52.5
Mrk-0	38	49	49	St-0	32	59	59
Ms-0	34	55.8	55.8	Ste-0	35		
Ms-0	37	55.8	55.8	Stw-0	40	52	52
Mt-0	34	32.3	32.3	Su-0	37	53.6	53.6
Mz-0	39	50.3	50.3	Ta-0	35	49.5	49.5
Mv-0	42	41.4	41.4	Te-0	39	60.1	60.1
Na-1	38	47.5	47.5	Ts-1	36	41.7	41.7
Nc-1	33	48.6	48.6	Ts-2	36	41	42
Nie-0	37	50	51	Ts-3	38	41	42
No-0	37	51.1	51.1	Ts-5	33	41.7	41.7
Nok-0	38	52	52	Ts-6	32	41	42
Nok-1	35	52.2	52.2	Ts-7	39	41	42
Nok-2	42	52	52	Tsu-0	38	34.4	34.4
Nok-3	28	52.2	52.2	Tsu-1	34	34.4	34.4
Np-0	42	52.7	52.7	Tu-0	36	45	45
Nw-0	36	50.5	50.5	Tu-1	38	45	45
Nw-1	41	50	51	Tul-0	39	43.3	43.3
Nw-2	36	50.5	50.5	Ty-0	40	56.4	56.4
Nw-3	41	50	51	Uk-1	37	48	48
Vi-0	41	50.2	50.2	Uk-2	37	48	48
Wa-1	39	52.3	52.3	Uk-3	34	48	48
Wc-1	38	52.6	52.6	Uk-4	34	48	48

Wc-2	38	52.6	52.6	Van-0	37	49.3	49.3
Wil-1	37	55	55	Wt-1	37	52.3	52.3
Wil-2	36	55	55	Wt-2	38	52	53
Wil-3	38	55	55	Wt-3	36	52.3	52.3
WI-0	41	47.9	47.9	Wt-4	36	52	53
Ws-0	38	52.3	52.3	Wt-5	29	52.3	52.3
Wassilewskija	40	52.3	52.3	Ws-1	38	52	53
Wei-0	40	47.3	47.3	Ws-2	37	52	53
Wei-1	39	47.3	47.3	Ws-3	39	52	53
Wu-0	37	49.8	49.8	Zu-0	38	47	49
				Zu-1	40	47	49

Sheet1

Sanyal et al. - *American Journal of Botany* 2018 - Appendix S3. DOI:**Appendix S3.** Fatty acid composition of *Arabidopsis thaliana* accessions.

Original	16:0	18:0	18:1	18:2	20:0	20:1
Aa-0	8	2.6	13.6	27.2	1.6	15.2
Abd-0	8.1	2.4	10.7	29	1.6	12.7
Ag-0	8	2.8	12.8	26.9	2	15.4
Cnt-1	8	2.8	13	27.6	1.8	14.3
Col-2	9.7	2.6	14.2	33.6	1.5	11
Col-3	8.9	2.4	14.6	31.7	1.3	11.6
Col-4	8.4	2.5	14.6	30.8	1.3	11.8
Col-5 (g11)	8.2	2.6	14.7	31.5	1.4	12.9
Condara	7.4	2	12	37	1	8
Cvi-0	8.9	2	9.4	33.2	1.2	9.5
C24	8.1	3.4	12	25.5	1.9	14.6
Da(1)-12	7.8	2.9	16	28	1.5	14.3
Dijon-G	7.4	2.7	18.7	27.6	1.2	13.4
Dijon-M	7.4	3.1	17	27.8	1.7	14.6
Ema-1	8.2	3	12.2	27.3	1.7	14.2
Enkheim-D	7.6	3	16.7	27.8	1.4	13
Enkheim-T	8	2.9	13.4	32.4	1.5	11.7
Estland	8.2	2.9	13	33.3	1.4	11.8
Iodja-Obi-Garr	7	2	12	37	.9	8.9
H55	8	2.3	11	30	1.4	12.5
Je54	7.2	2.3	15.4	30.8	1.3	13
Kas-1	6.8	2.4	12.2	29	1.3	13.4
Landsberg	7.5	2.7	16.6	27.7	1.4	12.9
Ler-1	7.6	2.4	17	25.7	1.3	12.4
Mh-0	8	2.6	16	27.8	1.5	14
Ms-0	6.8	2.3	11.8	30.2	1.4	13
Nd-1	9	2.4	13	26.7	1.3	13
Oy-1	7.4	2.7	15.5	26.6	1.4	14
Petergof	7.6	2.8	14.5	27.5	1.5	13.4
RLD1	7.9	2.9	15.2	28.4	1.5	14.8
Rld-2	8	2.9	13.5	28.9	1.5	13.5
Rubezhnoe-1	6.9	2	12	33.6	.9	13.2
Shahdara	6.2	1.7	12.3	34.3	1	9.3
Sn(5)-1	6.4	2.7	16	26	1	12.4
Sorbo	6.3	1.8	15.3	35	.9	10.2
s96	8	3.5	11.6	29	1.8	13
Tsu-1	7.2	3	14	29	1.7	12.8
Wassilewskijja	7.5	3	12.9	30.6	1.7	14.8
Ws-1	7.8	3	12.8	31.8	1.8	14.7
Ws-2	8.2	3.1	12.5	31.9	1.6	14
Ws-3	7.1	2.9	13	31.4	1.7	15.6
Wei-0	7.5	3.9	16.9	24.9	1.7	14.7
Wei-1	8.5	3.4	17.6	23.9	1.5	13.3
Aa-0	8.5	4.1	15.3	29.6	1.7	14.5
Ag-0	8.2	3	14	28	1.8	14
Ak-1	8.8	2.9	14.7	28.7	1.6	14.2
An-1	8	2.4	12.8	26.4	1.3	11.8
An-2	7.4	2.4	12.7	27.9	1.4	14.3
Ang-0	8.5	2.8	11.7	29	1.7	13.9
Ang-1	8.4	3	12.8	29.3	1.8	15
Ba-1	7.8	2.6	12.3	25.9	1.5	13.6
Bay-0	7.6	2.9	13	28	1.4	11.8

Sheet1

Bch-1	8.2	3	12.9	27.3	1.7	14
Bch-3	7.6	2.5	12.6	28	1.4	13.6
Bch-4	8.4	3.2	15.7	28	1.4	12.9
Bd-0	7	2.7	12.8	24.7	1.3	11.6
Be-1	8	3	15.7	27.5	1.5	12
Bl-1	7.5	2.8	15	28	1.3	13
Bla-1	8.3	3.2	13.6	25.6	1.6	13
Bla-2	8	3.6	14.7	25	1.6	15
Bla-3	8.4	3	12.8	26	1.8	15
Bla-4	8	2.9	11.9	30.4	1.9	12.4
Bla-5	7.8	2.6	12.8	25.6	1.4	13.3
Bla-6	8.3	3	11.6	25	1.8	15
Bla-10	8.5	3.4	11.7	26	1.8	14.3
Bla-11	8.4	2.8	12	26.4	1.6	12.9
Bla-12	9.3	2.7	13	30.6	1.3	10.4
Bla-14	7.9	2.6	11.3	28	1.4	10.8
Blh-1	7.5	2.5	14.5	28.4	1.4	13.7
Blh-2	7	2.5	14.7	27.8	1	12.3
Br-0	7.4	3	13	23	1.6	17.
Bs-1	8.4	3	15	27.9	1.6	13.9
Bs-2	8.24	3.6	19.7	26.3	1.8	13.6
Bs-5	9.36	3.1	14.97	25.4	1.9	16.4
Bsch-0	8.8	3.6	15.1	28.3	1.9	14.9
Bsch-2	9.1	3.9	11.1	26.7	2	13.4
Bu-0	8.9	3.1	15	25.9	1.8	14
Bu-2	8	2.6	15	27.4	1.7	14.6
Bu-3	9.2	3.2	11.9	28.5	1.9	12.3
Bu-4	8.7	3.2	14.6	27	1.9	15
Bu-5	8.3	3.2	15.4	28	2	15.6
Bu-6	8.9	3.4	11.5	26.6	2.2	14.3
Bu-7	8.7	3.2	13.5	29.3	2.1	14
Bu-8	8.8	3	12.3	29	2.5	16
Bu-9	8.8	2.6	13	24.3	1.8	13.5
Bu-13	8.5	2.8	15	28.8	1.8	14.6
Bu-14	8.3	3	13.8	30	1.6	12.6
Bu-15	8	3	14.2	32	2	12.9
Bu-17	7.7	3	12.5	27	1.7	14.6
Bu-18	7.8	3	13	31	1.5	11.6
Bu-19	8	2.7	13.3	25.7	1.7	14.3
Bu-20	7.7	2.9	14	30.4	1.5	12
Bu-21	8	3	15.9	27.5	1.6	14
Bu-22	7.5	2.8	11.8	32.4	1.5	11.3
Bu-23	7.7	3	13	30.3	1.6	12
Bu-24	8.5	3	14.7	27	1.5	13.5
Bu-25	8.7	3.2	12.9	29.5	1.8	13
Bur-0	7.5	3	12.9	26.5	1.3	12
Ca-0	7.7	3.4	14	26.3	1.5	14.3
Cal-0	7.2	2.6	11	24.8	1.3	11.3
Can-0	8.7	2.5	11.9	29.7	1	11.6
Cen-0	8.3	2.6	12.8	27.4	1.4	14.4
Cha-0	6.2	2.7	16.7	29.3	1	10.7
Cha-1	7	2.2	12.6	28	1.4	15.8
Chi-0	7.4	2.6	14	30.5	1	12.7
Chi-1	7.5	2.3	13.5	31.4	1.3	12.2
Chi-2	6.2	2.5	18.5	29.5	1.2	13.5

Sheet1

Cit-0	7	2.5	9.4	26.2	1.6	15.4
Cl-0	7.8	2.8	17.5	27.4	1.4	12.5
Co-1	8	3.4	13.7	25.7	2	14.4
Co-2	7.5	2.6	15.4	27	1.6	13.8
Co-3	8.7	2.4	12.8	27.2	1.4	15
Co-4	8.4	2.8	13.9	29	1.4	14.3
Col-0	7.7	2	9.6	32	1.3	11.7
Ct-1	7.4	3.1	16.4	27.4	1.5	14
Cvi-0	7.7	2	9.7	32.3	1.4	11.6
Da-0	7.5	2.7	13.4	30	1.4	12
Db-0	8	3.2	15.6	27.3	1.4	13
Db-1	7.6	3	16	26	1.5	13
Db-2	8	3.3	15.7	26.9	1.6	13.7
Di-0	6.9	2.7	16.3	27	1.4	14
Di-1	7.8	2.6	12.9	26.7	1.5	14.6
Di-2						
Dr-0	7.6	2.7	15.7	29.6	1.4	12.7
Dra-0	7.4	3	16.6	26.9	1.3	14.9
Dra-1	7.3	2.7	11.6	25.6	1.7	13
Dra-2	7.4	2.6	17.4	28	1	12.8
Edi-0	7.7	2.7	11.4	26.4	1.4	12.4
Ei-2	8.7	2.6	11.3	26.7	1.5	13.3
Ei-4	7.7	3	12.5	29.3	1.8	12
Ei-5	7.4	3	15.8	25.9	1.5	11.7
Ei-6	8.4	3.4	14.5	27.5	1.5	13.4
Eil-0	7.9	3.2	14.6	25.6	1.4	13.3
El-0	8	3	12.5	27.7	1.4	14.5
En-1	7	2.8	16.8	26.7	1.2	12.8
En-2	7.6	2.7	14	30.7	1.4	12
Ep-0	8.8	2.9	14.4	29.6	1.4	14
Er-0	7.5	2.6	14	29	1.3	12.9
Es-0	6.9	2.7	11.9	28.9	1.4	12.4
Est-0	7.7	2.8	12.8	32	1.4	12.7
Est-1	8.3	3	13	27	1.7	14.6
Et-0	7.8	2.6	14.7	23	1.3	14.8
Fe-1	8.8	3.4	13.5	27.9	1.9	15
Fl-1	6.6	2.8	11	29	1.5	14
Fr-2	7.7	2.3	13.7	27.9	1.4	13.6
Fr-3	7.4	2.9	17.5	28	1.4	15
Fr-4	8	2.8	11	27.8	1.6	13.6
Fr-5	8	2.3	11.9	33	1.4	13.7
Fr-6	8.4	3	13.9	28.4	1.5	13.9
Fr-7	8.4	2.8	15.5	30	1.4	13
Ga-0	6.9	3.4	14	25.5	1.9	18.5
Ga-2	7.7	2.8	14	26	1.4	13
Gd-1	8.2	3	14	28	1.3	11.4
Ge-0	8.5	3.3	11.9	25	1.6	14.3
Ge-1	7.9	2.8	15.7	27.9	1.5	13.9
Ge-2	8.6	3	14.4	27.9	1.5	13
Gie-0	7.7	2.8	13	29	1.6	13
Goe-0	8	3	11	33	1.8	12.9
Gr-1	7.8	2.4	11.3	28.8	1.4	13
Gr-2	7.4	2.8	13.8	27.8	1.4	13
Gr-5	8	3.3	16	28	1.4	14.7
Gr-6	7.6	3	13	27.8	1.4	19.8

Sheet1

Gre-0	7.5	2.8	11	27.4	1.7	14
Gue-0	7.4	3.5	13.4	28.7	1.7	13.5
Gue-1	8	3	16	28	1.6	13.7
Gy-0	7.9	2.9	10	24.6	1.9	16.4
Ha-0	8	3	13.6	29	1.7	13.9
Hi-0	8	3	15.7	27.6	1.5	12.4
HI-0	7.7	2.7	11.4	26	1.7	16
HI-2	7.3	2.9	13.	30	1.6	13.9
HI-3	7.3	3	10	26.6	2	16.7
Hn-0	7.8	2.4	12.6	28.5	1.3	14
Hs-0	7.4	3.2	13.6	28.8	1.6	16
In-0	7.	2.9	15.6	26.9	1.3	13
Is-0	7.5	2.9	10.2	29.7	1.8	15
Is-1	7.6	2.5	10.8	28.5	1.4	12.4
Ita-0	8.8	2.5	11	26	1.4	13
Je-0	7.5	2.8	12.9	29.6	1.5	15
Jl-1	7.6	2.9	14.3	27.5	1.6	14.6
Jl-2	7.	3.3	15.3	27.3	1.8	15.4
Jl-3	7.8	2.9	12.9	28.6	1.7	15.8
Jl-4	7	3	16.3	25.9	1.7	15
Jl-5	7.5	3.3	15.2	26.6	1.7	13.6
Jm-0	8	2.9	12.9	27.4	1.5	13.9
Jm-1	6.3	3	17	24.9	1.7	14.7
Jm-2	7.3	3	18	28	1.4	14
Kae-0	8	3	14.6	28	1.6	14
Kas-1	6	2	14.5	34	1	10.9
Kb-0	7.4	2.7	14.7	27.4	1.4	14.6
Kil-0	7	2.6	16.3	24.9	1.4	14.4
Kin-0	7.8	3	14.7	25.4	1.6	15
KI-0	7.4	2.6	15.	25.8	1.6	14.8
KI-1	8.5	2.6	11	27.3	1.6	13.9
KI-2	8	2.9	11	25.4	1.6	15.9
KI-5	7	2.9	15.6	27.5	1.5	16
Kn-0	7	2.9	11	28	1.7	15.7
Ko-2	8	2.7	10	24	1	13.7
Kr-0	7.9	2.9	15	25.6	1.7	13.7
Kro-0	7.7	3	13.2	27.9	1.7	13
La-0	6.9	2.7	20.5	27.5	1	13
La-1	7.8	2.8	11.9	26.5	1.7	15.5
Lan-0	7.3	2.3	15.3	28.6	1.2	14.5
Lc-0	7.7	2.8	16.3	31.5	1.5	13
Le-0	7.8	2.9	14	28	1.3	15
Li-1	7.5	2.9	12.7	29	1.8	13.7
Li-2	8	2.6	13.8	28.4	1.4	14
Li-2-1	8	3.2	12.8	27.6	1.6	13.7
Li-3	7	2.5	14	30.8	1	13.6
Li-3-3	8	2.7	14.7	29	1.4	14.6
Li-5	8.5	2.9	14.8	32.4	1.5	13.4
Li-5-2	7.9	2.9	13.8	26.9	1.5	13.7
Li-5-3	8.3	3	16	28	1.4	14.5
Li6						
Li-6-1	7.3	2.4	12.6	24.3	1.5	14.5
Li-7	7.3	3	13.6	26.4	1.5	14.9
Li-8	7.2	2	13.5	30	1	13.4
Li-10	7.9	2.6	13	26.6	1.5	14.9

Sheet1

Lip-0	7.6	2	16.5	28.6	1	14.6
LI-0	8.9	3.5	11.7	30.3	1.7	13.8
LI-1	7.9	3.	13	28	1.8	15.8
LI-2	8.6	3	12.9	26.5	1.7	15.7
Lm-2	7.5	3	13.4	27	1.8	15
Loe-1	7.7	2.8	14.9	26.6	1.6	15
Loe-2	7.7	2.6	13.9	25.7	1.6	14.9
Loh-0						
Lu-1	7.9	2.9	13.2	25.4	1.7	14.9
Lz-0	7.6	3	15.9	27.3	1.7	15
Ma-0	8	3	14.9	28.5	1.7	14.7
Ma-2	8	3	13.2	28	1.7	12.6
Mc-0	7.6	3.2	15.5	26.5	1.6	15
Me-0	6.9	2.4	14.2	29.5	1	12
Mh-0	7.2	2.5	12	27	1.4	12.3
Mh-1	8.3	2.4	13.9	28.3	1.4	13.3
Mir-0						
Mnz-0	8.4	2.4	11	27.8	1.5	12.8
MrK-0	6.4	2.9	12.6	25.3	1	13
Ms-0	7.7	2.5	15.4	28	1	12.3
Mt-0	8	2.8	12.6	30.7	1.6	13
Mv-0	7.4	2.9	11.5	26.3	1.5	14
Mz-0	7	3.5	18	28.4	1.7	15
Na-1	8	3.4	13.8	26.7	1.7	14.7
Nc-1	8.	2.9	14	27	1.5	13.7
Nd-0	8.4	2.6	14.1	25.7	1.4	13.8
Nie-0	7.3	2.6	14.3	29.5	1.2	12.8
No-0	7	2.9	14.5	27.7	1.4	14
Nok-0	7.6	2.6	14.1	25.9	1.5	13
Nok-1	7.8	3.2	15.9	26.6	1.7	14
Nok-2	7	2.9	13.5	24.9	1.5	14.4
Nok-3	8.5	3	12.5	28.6	1.6	13
Np-0	7.4	2.9	14.9	31	1.4	12
Nw-0	8.6	2.9	14.7	30.8	1.6	13.7
Nw-1	7.9	2.9	14.7	28	1.5	12.7
Nw-2	8	2.7	14	31	1.4	11.5
Nw-3	8	3	17.	28	1.5	14
Nw-4	8.5	3	13.5	31	1.4	12.7
Ob-0	8.6	3.3	12.2	32	1.7	11.6
Ob-1	7	2.8	14.8	28	1.6	13.9
Ob-2	8.6	2.8	16.4	27.5	1.5	13.6
Ob-3	7.9	2.9	13.8	29.4	1.5	14.4
Old-1	7.5	2.8	14.6	27.8	1.15	14
Old-2	8	2.7	14	27.7	1.4	14.7
Ost-0	7	2.5	9.7	27.9	1.6	14
Or-0	8	2.8	9.9	30	1.6	13.3
Ove-0	6.6.	2.9	12.5	29.7	1.6	13.6
Oy-0	7.5	3.6	14	27	1.6	15
Pa-1	7.9	3	14.8	26.4	1.5	14
Pa-2	8	3	15	29.4	1.5	12
Pa-3	7.5	3.3	11.5	28.9	2	13.3
Per-1	8.3	2.7	12.8	31.6	1.2	13.3
Per-2	6.7	2.6	12.8	32	1	12.5
Per-3	6.9	2.7	15.6	30	1	13
Pf-0	7.6	3.3	11.8	29.4	2	13

Sheet1

Pi-0	7.3	3	14.5	27.5	1.5	13.9
Pi-2	8.2	3	13.9	29.3	1.7	14.4
Pla-0	8.3	3	13.6	27.9	1.6	13.9
Pla-1	8.9	3.	13.9	27	1.6	14
Pla-2	8.5	3.5	13	27.7	1.8	14
Pla-3	8.9	3	12.2	25.7	1.8	15
Pla-4	8.4	3	13.5	27.5	1.6	13
Pn-0	7.3	2.4	15	26.3	1	12.4
Po-0	7	2	15.4	25	1.5	14.7
Po-1	7.3	2.8	14	28.4	1.6	13.3
Pog-0	8.4	2.3	12.4	25.3	1.3	14
Pr-0	7.5	2.8	14.5	28.9	1.4	15.4
Pt-0	7.7	3	13.7	28	1.5	14.5
Ra-0	7.9	3	14	27	1.5	13.4
Rak-2	7.2	2.6	14.5	26.8	1.5	14
Rd-0	8.4	3.3	13.6	28.6	1.9	14.4
Ri-0	7.9	3	14.4	25.9	1.4	13.3
Rou-0	7.9	3	13.7	27	1.7	15.5
Rsch-0	7.6	2.3	13	28.5	1.3	14
Rsch-4	7.5	2.6	11.6	28	1.6	12
Ru-0	8.3	3	14	27.9	1.5	12.8
Sah-0	8	2.5	13.6	29.3	1	11.4
Sap-0	8.4	3	13.3	29	1.6	14
Sav-0	7.7	2.9	15.5	26.9	1.4	13.4
Se-0	8.3	3	13.8	28.3	1.7	13.8
Sei-0	6.8	2.6	10.9	30.4	1	12.8
Sf-1	8.6	3	12	28	1.7	14.4
Sf-2	9	2.9	12.9	22	1.4	13.6
Sg-1	8.7	2.7	14.3	28.4	1.5	12.9
Sg-2	8.9	3	12.5	30.4	1.6	12.4
Sh-0	7.4	2.7	13.6	30.6	1.3	12.4
Si-0	9.8	2.5	11.4	29.8	1.3	13.6
Sp-0	8.4	3	12.6	26.6	1.6	14
St-0	9.2	2.8	11.3	2.6	1.6	11.6
Ste-0	7.2	2.8	9.9	26.9	1.8	13
Stw-0	7.3	2.8	12.6	32	1.5	12.3
Su-0	7.5	2.6	13.3	25.8	1.3	12
Ta-0	7.9	3	14.7	31.6	1.5	12
Te-0	7.9	3	11.5	28.4	1.3	13.6
Ts-1	8.6	3.2	13	26.6	1.5	14
Ts-2	8.7	3.4	13.1	27	1.7	14
Ts-3	8.4	3	13	26.3	1.4	13.9
Ts-5	8.7	2.4	10.6	26.3	1.4	12.5
Ts-6	8.5	2.5	10.8	27.5	1.4	12.4
Ts-7	7.4	2.8	12	26.5	1.3	11.9
Tsu-0	7	3	13.4	26.6	1.3	11.8
Tu-0	7.2	3.	13	27	1.5	12
Tu-1	8	3	13.9	28.4	1.6	12.7
Tul-0	7.8	3	10.6	28	1.5	13
Ty-0	6.7	2	9	25.6	1	12.5
Uk-1	7.2	3	14.9	30	1.6	12.3
Uk-2	8.2	2.6	15	27.5	1.4	13.8
Uk-3	8.2	2.6	15	27.7	1	13.8
Uk-4	7.8	2.9	15	28.5	1.5	14
Van-0	8	3	12.7	25.5	1.5	13.5

Sheet1

Vi-0	7.6	3	14	30	1.5	13.5
Wa-1	6	2.4	14.3	28	1	11
Wc-1	7.4	2.8	11.9	29	1.5	13.4
Wc-2	7.7	3	12.9	27.3	1.6	14
Wil-1	7.9	3.7	13.5	32.3	1.4	12.3
Wil-2	8	2.9	12.7	32.6	1.3	12
Wil-3	7.8	3	13.6	32.8	1	12.8
WI-0	7.9	3	13.5	26.5	1.6	14.3
Ws-0	7	2.6	15.5	29.3	0.9	11.9
Wt-1	8	3	13.5	31.6	1.8	13.5
Wt-2	8	2.9	13.5	28.6	1.4	13.6
Wt-3	7	3.	14	27.4	1.3	11
Wt-4	7.5	2.6	13	27.7	1.3	11.5
Wt-5	9.4	2.6	12.4	28.5	1.4	12.5
Wu-0	8	3	14.7	27.5	1.5	12.7
X-0	7	2.6	13	27	1.3	13.6
XX-0	7	2.5	12	26.8	1	12.6
XXX-0	8.3	2.4	13.3	31	1	10.6
Yo-0	7	3	13.5	24	1	12
Zu-0	8.3	2.8	12	26	1.6	13
Zu-1	7.4	3.2	15	27	1.6	14
KSK-1	8.5	2.5	10.5	30.8	1.6	12.3
Ber	6.9	2.4	10.9	27.3	1.4	13.8
M73235	8.3	2.4	11.4	31.4	1.4	12
Be-0	6.6	3.4	12.3	25.5	1.3	10.9
Bu-11	8.3	3.3	13.5	27.8	1.5	13
Do-0	7	2.7	11.4	27.6	1	10.8
Fi-0	7	2.9	14.5	25.6	1.6	12.9
Fi-1	8.3	3	13.6	27.4	1.5	11.9
Goe-2	8	2.5	12.8	26.3	1.2	12.9
Gr-3	7.8	2.9	13.4	29.6	1.4	12.4
Gr-4	7.5	3	14.8	29	1	12.4
Hau-0	7.6	2.5	13	28.7	1	12.7
Hh-0	7.2	2.3	15	22.8	1	13.4
KI-3	7.6	2.9	14.9	27.8	1.4	12
KI-4	7.5	2.7	14	27	1.3	12
Mr-0	7.4	2.8	14.7	25.3	1.4	12.7

Sheet1

18:3	20:2	22:1
23.9	1.6	1.6
22.1	1.8	1.5
21	1.5	1.7
22.7	1.7	1.7
19.5	1.7	1.2
19.9	1.5	1.2
20.4	1.6	1.1
20.8	1.6	1.2
22.4	1.7	1.2
16.8	1.9	1.2
24	1.5	1.5
19.8	1.5	1.4
20.4	1.2	1
21	1.1	1.2
22.5	1.6	1.5
20.3	1	1
21	1.8	1.2
18.7	1.7	1.1
23.4	1.7	1.3
22	2	1.5
20.1	1.3	1.2
23.4	1.9	1.6
18.7	1.	1
21.8	.9	1.2
21.7	1.2	1.3
23	2.2	1.8
22.9	1.4	1.4
22.5	1.5	1.4
21.6	1.5	1.6
21.7	1.5	1.5
22.8	1.5	1.4
20.6	1	1.3
26	1.7	1.4
23.4	1	1
22	1.4	1.2
23.3	1.6	1.6
22.2	1.5	1.6
20.4	1.9	1.6
19.9	1.8	1.8
20.6	1.8	1.6
21.4	2	1.7
22.4	1	1
22.8	.8	.9
22.9	1.8	
21.6	1.2	1.4
19	1.4	1.3
23.4	1.3	1.3
23.8	1.8	1.6
21	1.6	1.5
21.7	1.6	1.6
22.8	1.3	1.3
21	1.2	1

Sheet1

23.8	1.6	1.6
24.6	2	1.6
21	1	1
23	1	1
22.5	1.3	1.3
21	1	1
22.7	.9	1.2
23	1.3	1.4
23.7	1.5	1.7
22.1	1.76	1.5
20.3	1.4	1.4
23.3	1.4	1.9
22	1.3	1.8
23.1	1.4	1.6
20.2	1.3	1
20.7	1.3	1.3
21.9	1.4	1.4
20.7	1.2	1
26.7	1.4	1.6
20.9	1.3	1.3
19.2	1	0.7
18.5	1.4	1.1
19.4	1.6	0.9
17.5	1.3	0.9
15.9	1.2	0.8
16.6	1.2	0.9
19.3	1.6	0.8
17.6	1.4	0.9
18.2	1.4	1.1
19.1	1.7	1
18	1.5	.9
21	2	1.2
19	1.4	.9
19.6	1.4	1.5
21	1.5	1
20	1.6	1.4
24.	1.8	1.7
21	1.7	1
23.3	1.5	2
21.4	1.5	1.2
20.9	1	1.4
21.4	1.8	1.5
21	1.4	1.5
22.7	1	1.4
20.8	1.5	1.3
22.5	1.4	
21.4	1	1.3
22	1.4	1
19.4	1	1
22.3	1	1.3
23.2	1.3	1.3
22.7	1.9	1.7
21	1.3	.7
19.6	1.6	1.4
20.8	1	1.3

Sheet1

24.9	2.3	2.3
22	1	1
22.7	1.3	1.8
19.8	1.4	1.6
21.8	1.4	1.6
20.5	1.7	1.5
17.3	2.2	1.6
20.8	1	1
17.4	2	1.5
22.6	1.4	1.3
20.4	1	1
21.8	1	1
21.6	1	1
22.4	1.4	1.3
23	1.4	1.7
20	1.4	1
21.	1.5	1.4
24	1.5	1.6
21	1.3	1.4
21	1.5	.9
25.6	1.4	1.6
23	1.5	1.5
23	1	1
21.5	1	1
24.4	1.3	1.3
22	1.6	1.5
19.5	1	1
20.6	1	1
20	1.3	1.2
18.5	1.4	1
23	1.7	1.5
20.3	1.6	1.3
24	1.4	1.4
24.8	1.3	1.7
20	1.4	1.5
22.8	1.9	1.8
22.6	1.4	1.5
18.7	1	1
22.8	1.5	1.5
19.7	1.6	1.6
22	1.3	1.3
21	1.2	1
21	1.4	1.7
21.9	1	1.3
20.4	1	1
22	1	1
20.3	1	1
22	1.3	1.3
20.6	1.4	1.4
21.3	2	1.8
23	1.7	1.5
20.4	1	1.3
21	1.3	1
18.9	1.7	1.6

Sheet1

22	1.7	1.7
23.4	1.4	1.4
18.5	1	1
24	2	2
20.6	1	1.4
20.6	1	1
23.6	1.8	2
20.9	1.9	1.4
23.7	2.3	2.3
20.5	1.7	1.6
21	2	1.6
20.6	1.3	1
21	1.9	1.7
21.8	2	1.6
23.8	1.5	1.5
20	1.8	1.5
22	1.4	1.6
20.9	1.5	1.5
22.3	1.6	1.7
22.7	1	1.5
22	1.4	1.5
23.5	1.6	1.5
20.6	1	1
20	1	1
21.8	1.2	1.4
22.8	1.6	1.4
20.5	1.3	1.5
20.5	1	1.3
22.6	1.2	1.4
21	1	1.5
22.6	1.7	1.8
23	1.5	1.8
20.9	1	1.5
24.5	2	2
22	1.4	1.5
22	1	1.7
24.7	1.5	1.5
19	.9	1
24.8	1.7	1.9
20.3	1.5	1.3
17	1	1.3
22	1.4	1.4
23.8	1.5	1.7
19	1	1
24.6	1.6	1.6
20.8	1.6	1.6
19.3	1	1.4
19.8	1.6	1.4
21.9	1	1.5
21	1	1.3
24	1.3	1.6
22.5	1.3	1.6
21.3	1.6	1.3
23	1.4	1.6

Sheet1

23.4	1.4	1.4
19	1.3	1.3
20.6	1.3	1.6
22	1	1.6
22.3	1.4	1.7
22.4	1.3	1.6
23	1.3	1.6
23.9	1.6	1.6
21.6	1.3	1.6
20.9	1.4	1.4
19	1.3	1.3
22.7	1.4	1.5
19.5	1	1
21	1	1.3
22.7	1.3	1.6
20	1.8	1.4
19.3	1.6	1.6
18.8	1	1
19.3	1.6	1.3
22.6	1.9	1.7
17.7	1	1
19.8	1.6	1.8
20.3	1.5	1.6
22.4	1.3	1.4
21.8	1.4	1.5
22	2	1.2
21	1.6	1
20	1.4	1.6
21.6	1.6	1.7
20	1	1.5
18.7	1.4	1
18	1	1
20.7	1	1
22.8	1.5	1.4
20.7	1	1
19.3	1.5	1.4
20.8	1.5	1.5
20.7	1.4	1.6
22.3	1	1
20	1.7	1.5
21	1.3	1.8
21	1.4	1.7
25	2	2
21.6	1.8	3
23	1.8	1.6
21.9	1.3	1.6
21.5	1	1
22	1.3	1
20.4	1.5	1.5
21.4	2	1
20.6	1.6	1.3
21	1.4	1
20.6	1.4	1.6

Sheet1

21	1.4	1.4
22.7	1.5	1
20.8	1.3	1.3
22.5	1	1.4
21.9	1.3	1.5
24	1.4	1.5
20	1	1
22.2	1	1
20.8	1	1.4
20.5	1.3	1.3
23.3	1.4	1.3
22	1.6	1.6
20	1.5	1
21.5	1.3	1
23	1.4	1.4
22	1.4	1
22.5	1	1
20.7	1.5	1.7
24.7	1.8	1.6
23	1.5	1.7
22	1.3	1
17	1.7	1
21.6	1.4	1.4
21	1.4	1.2
21.3	1.3	1.6
22.9	2	.5
22.5	1.3	1.6
23	1	1.3
20	1.4	1.5
18.4	1.1	1.4
21.3	1.5	1.4
22.7	1.7	1.2
23.6	1.3	1.7
22.7	1.	1.6
22	1.5	1.9
19	1.8	1.2
21.7	1	1
20	1.4	1.3
21.8	1.6	1.3
22	1.4	1.3
20.9	1	1.4
22.5	1.4	1.4
20.4	1.4	1.3
19	1.4	1.7
21.5	1.4	1.3
21.6	1.4	1.3
22.3	1.5	1.5
20.4	1.3	1.3
21	1.9	1.6
20.4	2	1
18	1	1
20	1.3	1.3
21.8	1.	1.6
18.9	1.3	1.6
21.7	1.3	1.5

Sheet1

20	1.5	1.4
18.3	1.3	1
20.4	1.7	1.3
22	1.5	1.5
20.7	1.5	1
20	1.7	1.4
20	1.8	1
22	1.3	1.4
18.7	1	1
19.5	1.6	1.6
21.8	1.6	1.4
18.8	1	.9
21.7	1.5	1.5
21	1	1.7
20.8	1	1
21	1.4	1.3
20.4	1.4	1
19.4	1.4	1
19	1	1
20.9	1.3	1.5
20	1.3	1.4
21	1	1.6
23.5	1.9	1.8
20.7	1.9	1.7
20.6	1.3	1.3
21.9	1.4	1.3
20	1	1
18.6	1	1.4
20.3	1	1
20.7	1	1.5
20	1.5	1.2
19.7	1.3	1.3
23.3	1.7	1.4
22	.9	1
20.5	1	1
21.7	1	1
21	1	1

	Estimate	Std. Error	z-value	Pr(> z)		Estimate	Std. Error	z-value	Pr(> z)/2
Intercept	2.02499	0.04058	49.904	< 2e-16***	Genus	0.590165	0.104636	5.640	8.49e-09***
A:P	0.26879	0.12276	2.190	0.02856*	Tribes	0.045540	0.005873	7.754	4.46e-15***
P	0.26388	0.08700	3.033	0.00242**	Species	0.960505	0.299737	3.204	0.000676***
A:B	-0.13660	0.08973	-1.522	0.12789					
B:P	0.05261	0.14381	0.366	0.71448					
A:B:P	-0.13953	0.16911	-0.825	0.40933					
B	-0.51174	0.21232	-2.410	0.01594					
Erucic									
	Estimate	Std. Error	z-value	Pr(> z)		Estimate	Std. Error	z-value	Pr(> z)/2
Intercept	2.202	0.028	77.762	< 2e-16***	Genus	0.68	0.125	5.435	2.75e-08***
A:P	-0.44	0.091	-4.814	1.48e-06***	Tribes	0.054	0.008	6.852	3.65e-12***
P	0.013	0.056	0.228	0.82	Species	0.954	0.305	3.126	0.000887***
A:B	0.316	0.067	4.715	2.41e-06***					
B:P	-0.324	0.098	-3.293	0.00099***					
A:B:P	0.008	0.089	0.086	0.931					
B	0.037	0.112	0.332	0.74					

A= Annual, B= Biennial, P=Perennial

Significance levels: 0 '***' 0.001 '**' 0.01 '*' 0.05.

Sanyal et al. - *American Journal of Botany* 2018 - Appendix S5. DOI:

Appendix S5. Generalized linear mixed model analysis of seed oil traits and habitat (temperate, subtropical, tropical) in Brassicaceae.

Trait									
SOC									
Fixed factors					Random factors				
	Estimate	Std. Error	z-value	Pr(> z)		Estimate	Std. Error	z-value	Pr(> z)/2
Intercept	3.155	0.016	194.087	< 2e-16***	Genus	0.304	0.048	6.403	7.64e-11***
Te	0.036	0.039	0.920	0.357	Tribes	0.364	0.108	3.391	0.000348***
Te:S	0.021	0.046	0.462	0.644	Species	0.03	0.003	10.066	< 2e-16***
Te:T	0.121	0.061	1.969	0.04893*					
Te:S:Tr	0.669	0.268	2.500	0.01242*					
S	0.445	0.155	2.868	0.00413**					
Linoleic									
	Estimate	Std. Error	z-value	Pr(> z)		Estimate	Std. Error	z-value	Pr(> z)/2
Intercept	2.783	0.023	123.402	< 2e-16***	Genus	0.241	0.041	5.846	2.52e-09***
Te:S	-0.21	0.063	-3.337	0.000848***	Tribes	0.037	0.004	8.675	< 2e-16***
Te:T	-0.141	0.07	-2.016	0.043829 *	Species	0.47	0.144	3.269	0.00054***
Te:S:Tr	-0.141	0.084	-1.671	0.095 .					
S	-0.217	0.223	-0.973	0.33					
Eicosenoic									
	Estimate	Std. Error	z-value	Pr(> z)		Estimate	Std. Error	z-value	Pr(> z)/2
Intercept	2.07245	0.03654	56.721	<2e-16 ***					
Te:S	0.11239	0.07929	1.417	0.1563	Genus	0.62131	0.10987	5.655	7.78e-09 ***
Te:T	0.19763	0.10379	1.904	0.0569 .	Tribes	0.04566	0.00585	7.805	2.98e-15 ***
Te:S:Tr	-0.30710	0.12261	-2.505	0.0123 *	Species	0.38282	0.11818	3.239	0.000599 ***
S	0.26929	0.17294	1.557	0.1194					
Erucic									
	Estimate	Std. Error	z-value	Pr(> z)		Estimate	Std. Error	z-value	Pr(> z)/2
Intercept	2.17	0.025	88.439	< 2e-16 ***	Genus	0.467	0.082	5.7	5.99e-09 ***
Te	0.149	0.056	2.664	0.00773 **	Tribes	0.095	0.012	7.81	2.87e-15 ***
Te:S	0.291	0.063	4.644	3.42e-06 ***	Species	1.166	0.36	3.24	0.000597 ***
Te:T	0.13	0.0816	1.586	0.113					

Te: Temperate, S = Subtropical, Tr = Tropical.
Significance levels: 0 ‘***’ 0.001 ‘**’ 0.01 ‘*’ 0.05.