



HAL
open science

Dynamic Output Feedback Stabilization of Non-uniformly Observable Dissipative Systems

Ludovic Sacchelli, Lucas Brivadis, Vincent Andrieu, Ulysse Serres, Jean-Paul
Gauthier

► **To cite this version:**

Ludovic Sacchelli, Lucas Brivadis, Vincent Andrieu, Ulysse Serres, Jean-Paul Gauthier. Dynamic Output Feedback Stabilization of Non-uniformly Observable Dissipative Systems. 2020. hal-02356524v2

HAL Id: hal-02356524

<https://hal.science/hal-02356524v2>

Preprint submitted on 12 Jun 2020 (v2), last revised 12 Jun 2020 (v3)

HAL is a multi-disciplinary open access archive for the deposit and dissemination of scientific research documents, whether they are published or not. The documents may come from teaching and research institutions in France or abroad, or from public or private research centers.

L'archive ouverte pluridisciplinaire **HAL**, est destinée au dépôt et à la diffusion de documents scientifiques de niveau recherche, publiés ou non, émanant des établissements d'enseignement et de recherche français ou étrangers, des laboratoires publics ou privés.

Dynamic Output Feedback Stabilization of Non-uniformly Observable Dissipative Systems

Ludovic Sacchelli¹, Lucas Brivadis², Vincent Andrieu², Ulysse Serres², and Jean-Paul Gauthier³

¹Department of Mathematics, Lehigh University, Bethlehem, PA, USA (lus219@lehigh.edu)

²Univ. Lyon, Université Claude Bernard Lyon 1, CNRS, LAGEPP UMR 5007, 43 bd du 11 novembre 1918, F-69100 Villeurbanne, France (lucas.brivadis@univ-lyon1.fr).

³Université de Toulon, Aix Marseille Univ, CNRS, LIS, France

June 12, 2020

Abstract

Output feedback stabilization of control systems is a crucial issue in engineering. Most of these systems are not uniformly observable, which proves to be a difficulty to move from state feedback stabilization to dynamic output feedback stabilization. In this paper, we present a methodology to overcome this challenge in the case of dissipative systems by requiring only target detectability. These systems appear in many physical systems and we provide various examples and applications of the result.

Keywords: State observers, Dynamic output feedback, Nonlinear control systems, Unobservable, Feedback stabilization, Asymptotic stability

1 Introduction

A control system is said to be *state-affine* if it is of the form

$$\dot{x} = A(u)x + B(u) \tag{1}$$

with $x \in \mathbb{R}^n$ being the state of the system and $u \in \mathbb{R}^m$ being the input. System (1) is said to be uniformly *dissipative* if there exists a positive definite matrix $P \in \mathbb{R}^{n \times n}$ such that for all inputs $u \in \mathcal{U} \subset \mathbb{R}^m$,

$$PA(u) + A(u)'P \leq 0. \tag{2}$$

Many physical systems satisfy such a dissipativity property. For example, it is the case for input-state-output port-Hamiltonian systems (see *e.g.* [10]). Hence, stabilizing the state of such a dissipative state-affine control system to a target point (which we assume to be 0, without loss of generality) is a crucial issue in engineering. However, in most cases, only part of the system is measured, namely the output y which we assume to depend linearly on x :

$$y = Cx. \tag{3}$$

Hence the stabilization must be achieved using only an output feedback, and not a state feedback. If a stabilizing state feedback exists, then a common strategy to build a dynamic

output feedback is to apply this feedback to an *observer* of the state, which learns the state from the output. A sufficient condition given in [8] for this method to work is the *uniform observability* of the system in small time, that is, for all input u , the observation of the output y on any time interval is sufficient to uniquely determine the state x .

However, as shown in [3], it is generic for a state-affine system to have inputs that make the system unobservable, called singular inputs. This proves to be a challenge in the context of dynamic output feedback stabilization. To overcome this issue, some authors have proposed to modify the feedback law in order to get new observability properties while maintaining its stabilizing property (see *e.g.* [2, 6] for time-varying perturbations or [1, 4] for smooth autonomous perturbations).

In this paper, we show for uniformly dissipative systems that local asymptotic state feedback stabilizability and target detectability are sufficient to prove semi-global asymptotic dynamic output feedback stabilizability. The key point is that target detectability is a much weaker assumption than uniform observability. And we do not follow any perturbation strategy of the feedback law.

In the next section, we state the main result of the paper. Its proof may be found in Section 3. In the last Section 4, we provide various examples and applications of the result.

2 Main result

2.1 Problem statement

Let n , m and p be positive integers, $A : \mathbb{R}^m \rightarrow \mathbb{R}^{n \times n}$ and $B : \mathbb{R}^m \rightarrow \mathbb{R}^n$ be two continuous maps, and $C \in \mathbb{R}^{p \times n}$. For all $u \in C^0(\mathbb{R}_+, \mathbb{R}^m)$, we consider the following observation-control system:

$$\begin{cases} \dot{x} = A(u)x + B(u) \\ y = Cx \end{cases} \quad (4)$$

where x is the state of the system, u is the input and y is the output.

Then (4) is said to be dissipative for the input u if there exists a positive definite matrix $P \in \mathbb{R}^{n \times n}$ such that (2) holds, *i.e.* for all $x \in \mathbb{R}^n$, $x'PA(u)x \leq 0$. Then, for all $\alpha > 0$, consider the following Luenberger observer

$$\begin{cases} \dot{\hat{x}} = A(u)\hat{x} + B(u) - \alpha P^{-1}C'C\varepsilon \\ \dot{\varepsilon} = (A(u) - \alpha P^{-1}C'C)\varepsilon \end{cases} \quad (5)$$

where \hat{x} denotes the state of the observer and ε the error between the actual state of (4) and the observer, *i.e.* $\varepsilon = \hat{x} - x$. Assuming the local asymptotic stabilizability at 0 of (4), we prove the semi-global asymptotic stabilizability at $(0, 0)$ of (5), without uniform observability hypothesis. Instead, we use a detectability hypothesis at the target.

2.2 Statement of the result

Let $\lambda \in C^0(\mathbb{R}^n, \mathbb{R}^m)$ be a state feedback law. In the rest of the paper, λ is fixed and we assume that for all $\alpha > 0$, all positive definite $P \in \mathbb{R}^{n \times n}$ and all initial conditions $(\hat{x}_0, \varepsilon_0) \in \mathbb{R}^n \times \mathbb{R}^n$ the Luenberger observer

$$\begin{cases} \dot{\hat{x}} = A(\lambda(\hat{x}))\hat{x} + B(\lambda(\hat{x})) - \alpha P^{-1}C'C\varepsilon \\ \dot{\varepsilon} = (A(\lambda(\hat{x})) - \alpha P^{-1}C'C)\varepsilon. \end{cases} \quad (6)$$

has a unique solution $(\hat{x}, \varepsilon) \in C^0(\mathbb{R}_+, \mathbb{R}^n \times \mathbb{R}^n)$ such that $(\hat{x}(0), \varepsilon(0)) = (\hat{x}_0, \varepsilon_0)$ (which is the case when the vector field associated to (6) is locally Lipschitz and forward complete). Without loss of generality on the system, we assume that $\lambda(0) = 0$. In order to answer the issue raised in Section 2, we consider the case of λ a locally asymptotically stabilizing state feedback law of (4).

Assumption 1 (State feedback stabilizability). There exists a non-empty open domain $\mathcal{D} \subset \mathbb{R}^n$ such that 0 is an asymptotically stable equilibrium point with basin of attraction \mathcal{D} of the vector field $f : \mathbb{R}^n \ni x \mapsto A(\lambda(x))x + B(\lambda(x))$.

As stated earlier, we focus on the class of dissipative systems. The stabilizing feedback law being fixed, it is sufficient to assume uniform dissipativity for inputs that this feedback may yield.

Assumption 2 (Dissipativity). There exists a positive definite matrix $P \in \mathbb{R}^{n \times n}$ such that for all $(x, \hat{x}) \in \mathbb{R}^n \times \mathcal{D}$

$$x'PA(\lambda(\hat{x}))x \leq 0. \quad (7)$$

From now on, (6) is considered only for this specific matrix P . Our goal is to prove the semi-global asymptotic stability of (6) without uniform observability assumption. We show that the following condition is sufficient.

Assumption 3 (Target detectability). The pair $(C, A(0))$ is detectable.

Now we state the main theorem of the paper.

Theorem 4. *If Assumptions 1, 2 and 3 hold, then for any compact set $K_1 \times K_2 \subset \mathcal{D} \times \mathbb{R}^n$, there exists $\alpha_0 > 0$ such that for all $\alpha \in (0, \alpha_0)$, $(0, 0)$ is an asymptotically stable equilibrium point of (6) with basin of attraction containing $K_1 \times K_2$.*

2.3 Discussion on the result

Remark 5 (on Assumption 2). Dissipativity of the system is the key point of the result. It implies that the function $V : \varepsilon \mapsto \varepsilon'P\varepsilon$ is a Lyapunov function for the ε -subsystem of (6) as long as $\hat{x} \in \mathcal{D}$. Indeed,

$$\begin{aligned} \frac{dW(\varepsilon)}{dt} &= \varepsilon'P\dot{\varepsilon} + \dot{\varepsilon}'P\varepsilon \\ &= \varepsilon'(PA(\lambda(\hat{x})) + A(\lambda(\hat{x}))'P)\varepsilon - 2\alpha\varepsilon'C'C\varepsilon \\ &\leq -2\alpha|C\varepsilon|^2 && \text{(by Assumption 2)} \\ &\leq 0. \end{aligned}$$

Numerous physical systems satisfy this dissipativity property. We provide examples in the last Section 4.

Remark 6 (on Assumption 3). Let $A_0 = A(0)$. It is well-known (see *e.g* [7]) that the detectability of the pair (C, A_0) is equivalent to the fact that the solutions of the linear dynamical system $\dot{\omega} = A_0\omega$ are such that, if $C\omega \equiv 0$, then $\omega \rightarrow 0$. Note that the set of pairs (C, A_0) that are detectable is open and dense in $\mathbb{R}^{m \times n} \times \mathbb{R}^{n \times n}$.

Remark 7 (on Theorem 4). The key point of the theorem is that it does not rely on any *uniform observability* assumption. Instead, a dissipativity property of the system is required, as well as target detectability.

Note that taking $p = n$ and C the identity matrix, Assumption 3 is trivially satisfied, and then Theorem 4 implies the following corollary, which is an interesting result in itself about the stabilization of dissipative systems.

Corollary 8. *Any locally asymptotically stabilizable dissipative state-affine system is also semi-globally asymptotically stabilizable by means of a dynamic feedback.*

We prove Theorem 4 in the next section.

3 Proof

In this section, we suppose that Assumptions 1, 2 and 3 hold. The proof of Theorem 4 rely on the three following lemmas, that we state and prove in this section.

3.1 Local asymptotic stability

Lemma 9. *For all $\alpha > 0$, (6) is locally asymptotically stable at $(0, 0)$.*

Proof. Let $A_0 = A(0)$. Consider the linearization of (6) at the origin:

$$\begin{cases} \dot{\hat{x}} = A_0 \hat{x} - \alpha P^{-1} C' C \varepsilon \\ \dot{\varepsilon} = (A_0 - \alpha P^{-1} C' C) \varepsilon. \end{cases} \quad (8)$$

This system is upper triangular. Let us first focus on the ε part of the system. Consider the function $V : \varepsilon \mapsto \varepsilon' P \varepsilon$. Then V is a Lyapunov function for the ε -subsystem. Indeed,

$$\begin{aligned} \frac{dV(\varepsilon)}{dt} &= \varepsilon' P \dot{\varepsilon} + \dot{\varepsilon}' P \varepsilon \\ &= \varepsilon' (PA_0 + A_0' P) \varepsilon - 2\alpha \varepsilon' C' C \varepsilon \\ &\leq -2\alpha |C\varepsilon|^2 && \text{(by Assumption 2)} \\ &\leq 0. \end{aligned}$$

We denote by $\omega(\varepsilon_0)$ the ω -limit set of the the ε -subsystem with initial condition $\varepsilon_0 \in \mathbb{R}^n$. Then, by LaSalle's invariance principle, $\omega(\varepsilon_0) \subset \{\varepsilon_0 \in \mathbb{R}^n \mid C\varepsilon \equiv 0\}$. Since the pair (C, A_0) is detectable by Assumption 3, we have $\varepsilon \rightarrow 0$. Since the system is linear, this implies that all eigenvalues of $A_0 - \alpha P^{-1} C' C$ have negative real part. Now let us consider the \hat{x} -subsystem. Since 0 is asymptotically stable for the vector field f , all the eigenvalues of A_0 have non-positive real part. Moreover, $\{\varepsilon_0 \in \mathbb{R}^n \mid C\varepsilon \equiv 0\}$ is invariant under the dynamics of the \hat{x} -subsystem. Then, applying the center manifold theorem (see *e.g.* [3, Appendix, Theorem 4.2]), (6) is locally asymptotically stable at 0. \square

3.2 All trajectories are bounded

Lemma 10. *For all compact set $K_1 \times K_2 \subset \mathcal{D} \times \mathbb{R}^n$, there exists $\alpha_0 > 0$ such that for all $\alpha \in (0, \alpha_0)$, all the trajectories of (6) with initial conditions in $K_1 \times K_2$ remain in a compact subset of $\mathcal{D} \times \mathbb{R}^n$.*

Proof. Let $K_1 \times K_2 \subset \mathcal{D} \times \mathbb{R}^n$ be a compact set. Let $R = \mu_{\max} \sup_{K_2} V < +\infty$, where μ_{\max} denotes the largest eigenvalue of P . According to Assumption 1, there exists a strict Lyapunov function W for the vector field f . For all $r > 0$, set $D(r) = \{x \in \mathbb{R}^n \mid W(x) < r\} \subset \mathcal{D}$ and denote by $\partial D(r)$ its boundary. Let $\rho > 0$ be such that $K_1 \subset D(\rho)$ and the closure of $D(\rho)$ lies

in \mathcal{D} . Set $M_1 = \sup_{\partial D(\rho)} L_f W < 0$ and $M_2 = 1 + \sup_{\partial D(\rho)} |\nabla W| < +\infty$ where L_f denotes the usual Lie derivative along f and ∇ stands for the Euclidean gradient.

Let $\alpha_0 = \frac{-M_1}{RM_2|P^{-1}||C|^2} > 0$ and take $\alpha \in (0, \alpha_0)$. Take $(\hat{x}_0, \varepsilon_0) \in K_1 \times K_2$ and denote (\hat{x}, ε) the semi-trajectory of (6) starting from $(\hat{x}_0, \varepsilon_0)$. Since $V : \varepsilon \mapsto \varepsilon' P \varepsilon$ is a Lyapunov function for the ε -subsystem of (6), we have $|\varepsilon| \leq R$. Assume there exists $t > 0$ such that $W(\hat{x}(t)) = \rho$. Then

$$\begin{aligned} \frac{d}{dt} W(\hat{x}(t)) &= L_f W(\hat{x}(t)) - \alpha (\nabla W(\hat{x}(t)))' P^{-1} C' C \varepsilon(t) \\ &\leq M_1 + \alpha M_2 |P^{-1}| |C|^2 R \\ &< 0. \end{aligned}$$

Hence $\hat{x}(t) \in D(\rho)$ for all $t \geq 0$. Thus, for all $\alpha \in (0, \alpha_0)$, all the trajectories of (6) with initial conditions in $K_1 \times K_2$ remain in a compact subset of $\mathcal{D} \times \mathbb{R}^n$. \square

3.3 All trajectories converge to 0.

Lemma 11. *For all compact set $K_1 \times K_2 \subset \mathcal{D} \times \mathbb{R}^n$, there exists $\alpha_0 > 0$ such that for all $\alpha \in (0, \alpha_0)$, all the trajectories of (6) with initial conditions in $K_1 \times K_2$ converge to $(0, 0)$.*

Proof. For all initial conditions $(\hat{x}_0, \varepsilon_0) \in \mathbb{R}^{2n}$, we denote $t \mapsto (\hat{X}(t, \hat{x}_0, \varepsilon_0), E(t, \hat{x}_0, \varepsilon_0))$ the semi-trajectory of (6) with initial conditions $(\hat{x}_0, \varepsilon_0)$. Let $K_1 \times K_2 \subset \mathcal{D} \times \mathbb{R}^n$ be a compact set and $\alpha > \alpha_0 > 0$ as in Lemma 10, so that all the trajectories of (6) with initial conditions in $K_1 \times K_2$ remain in a compact subset of $\mathcal{D} \times \mathbb{R}^n$. Let $(\hat{x}_0, \varepsilon_0) \in K_1 \times K_2$. We denote (\hat{x}, ε) the semi-trajectory of (6) starting from $(\hat{x}_0, \varepsilon_0)$, and $\omega(\hat{x}_0, \varepsilon_0)$ the ω -limit set of this semi-trajectory.

We prove that (\hat{x}, ε) converges to $(0, 0)$ as a consequence of Lemma 9, by proving that the semi-trajectory enters the basin of attraction of $(0, 0)$ in finite time. It is sufficient to prove that $(0, 0) \in \omega(\hat{x}_0, \varepsilon_0)$ since this implies that (\hat{x}, ε) enters any open set containing $(0, 0)$ in finite time. We prove this in three steps: first $\omega(\hat{x}_0, \varepsilon_0) \subset \{(\hat{x}_1, \varepsilon_1) \in \mathcal{D} \times \mathbb{R}^n \mid CE(\cdot, \hat{x}_1, \varepsilon_1) \equiv 0\}$, then $\omega(\hat{x}_0, \varepsilon_0) \cap (\{0\} \times \mathbb{R}^n) \neq \emptyset$ and finally $(0, 0) \in \omega(\hat{x}_0, \varepsilon_0)$. Recall that $\frac{dV(\varepsilon)}{dt} \leq -2\alpha|C\varepsilon|^2$ by Assumption 2. Then, according to LaSalle's invariance principle, $\omega(\hat{x}_0, \varepsilon_0) \subset \{(\hat{x}_1, \varepsilon_1) \in \mathcal{D} \times \mathbb{R}^n \mid CE(\cdot, \hat{x}_1, \varepsilon_1) \equiv 0\}$.

Let $(\hat{x}_1, \varepsilon_1) \in \omega(\hat{x}_0, \varepsilon_0)$.

The set $\omega(\hat{x}_0, \varepsilon_0)$ is compact and invariant under the dynamics of the system, hence $\hat{X}(t, \hat{x}_1, \varepsilon_1) \in \omega(\hat{x}_0, \varepsilon_0)$ for all $t \geq 0$. This further implies that $\omega(\hat{x}_1, \varepsilon_1)$ is a non-empty compact subset of $\omega(\hat{x}_0, \varepsilon_0)$. As a consequence of Assumption 1, $\hat{X}(t, \hat{x}_1, \varepsilon_1) \rightarrow 0$ as $t \rightarrow +\infty$. Hence $\omega(\hat{x}_1, \varepsilon_1) \subset \{0\} \times \mathbb{R}^n$ and thus

$$\omega(\hat{x}_0, \varepsilon_0) \cap (\{0\} \times \mathbb{R}^n) \neq \emptyset.$$

Then there exists $\varepsilon_2 \in \mathbb{R}^n$ such that $(0, \varepsilon_2) \in \omega(\hat{x}_0, \varepsilon_0) \subset \{(\hat{x}_1, \varepsilon_1) \in \mathcal{D} \times \mathbb{R}^n \mid CE(\cdot, \hat{x}_1, \varepsilon_1) \equiv 0\}$. Hence $\hat{X}(\cdot, 0, \varepsilon_2) \equiv 0$. Then $E(\cdot, 0, \varepsilon_2)$ is solution of

$$\dot{\varepsilon} = A_0 \varepsilon, \quad C \varepsilon = 0. \tag{9}$$

Since the pair (C, A_0) is detectable (by Assumption 3), $E(\cdot, 0, \varepsilon_2) \rightarrow 0$. Hence $\{(0, 0)\} = \omega(0, \varepsilon_2) \subset \omega(\hat{x}_0, \varepsilon_0)$. By local asymptotic stability of $(0, 0)$, it follows that the semi-trajectory (\hat{x}, ε) converges towards 0. \square

Proof. (Proof of Theorem 4) Combining stability from Lemma 9 and semi-global convergence towards $(0, 0)$ from Lemma 11, we get the result. \square

4 Examples and applications

In this section, we provide some examples and applications to illustrate the main Theorem 4.

Remark 12. If $A(u) = (J(u) - R(u))\mathcal{H}$ for some positive definite matrix \mathcal{H} and positive semi-definite (resp. skew-symmetric) matrix $R(u)$ (resp. $J(u)$), B is linear and $C = B'\mathcal{H}$, then we recognize an input-state-output port-Hamiltonian system (see *e.g.* [10]). In that case, a static output stabilizing feedback is given by $u = -ky$ for any $k > 0$. However, for the same dynamics with a different linear output (*i.e.* such that $C \neq B'\mathcal{H}$), our result provides a methodology for semi-global dynamic output feedback stabilization when the pair $(C, A(0))$ is detectable. The following examples are of this form.

Example 13 (Harmonic oscillator). Consider (4) with

$$A(u) = \begin{pmatrix} 0 & -(1+u) \\ 1+u & 0 \end{pmatrix}, \quad B(u) = \begin{pmatrix} u \\ 0 \end{pmatrix} \quad \text{and} \quad C = \begin{pmatrix} 0 & 1 \end{pmatrix}.$$

Let $\lambda : \mathbb{R}^2 \ni (x_1, x_2) \mapsto -x_1$. Then $W : \mathbb{R}^2 \ni x \mapsto |x|^2$ is a Lyapunov function for the vector field $f : x \mapsto A(\lambda(x))x + B(\lambda)$. Indeed, for any solution x of (4),

$$\frac{dW(x)}{dt} = 2x'A(\lambda(x))x + 2x'B(\lambda(x)) = -2x_1^2$$

since $A(u)$ is skew-symmetric for all $u \in \mathbb{R}$. According to the LaSalle's invariance principle, the ω -limit set of the trajectory is the largest positively invariant set contained in $\{x \in \mathbb{R}^2 \mid x_1 \equiv 0\}$. Note that $\lambda \equiv 0$ and $\dot{x}_1 = -x_2$ on this set. Then $x \rightarrow 0$. Hence λ is a globally asymptotically stabilizing feedback law. The Kalman observability matrix of the pair $(C, A(0))$ is the full rank matrix

$$\begin{pmatrix} C \\ CA(0) \end{pmatrix} = \begin{pmatrix} 0 & 1 \\ 1 & 0 \end{pmatrix}.$$

Hence $(C, A(0))$ is observable, and *a fortiori* detectable. Thus, all the Assumptions 1, 2 and 3 are satisfied, and we may apply Theorem 4 to find a semi-globally asymptotically stabilizing dynamic output feedback: for all compact set $K_1 \times K_2 \subset \mathbb{R}^n \times \mathbb{R}^n$, there exists $\alpha_0 > 0$ such that for all $\alpha \in (0, \alpha_0)$, $(0, 0)$ is an asymptotically stable equilibrium point with basin of attraction containing $K_1 \times K_2$ of (6).

Example 14 (Ćuk converter). The averaged model of the Ćuk converter given in Figure 1 can be written as follow:

$$\dot{x} = \begin{pmatrix} 0 & -(1-u) & 0 & 0 \\ 1-u & 0 & u & 0 \\ 0 & -u & 0 & -1 \\ 0 & 0 & 1 & -\frac{1}{R} \end{pmatrix} Px + \begin{pmatrix} E \\ 0 \\ 0 \\ 0 \end{pmatrix} \quad (10)$$

where x_1 and x_3 are the fluxes in the inductances L_1 and L_3 , x_2 and x_4 are the charges in the capacitors C_2 and C_4 , R is the load resistance, E is the voltage source and $P = \text{diag}\left(\frac{1}{L_1}, \frac{1}{C_2}, \frac{1}{L_3}, \frac{1}{C_4}\right)$. As in [5], the goal is to stabilize the system at

$$x^* = \left(\frac{L_1}{REV_d^2}, C_2V_d + E, -\frac{L_3}{R}V_d, -C_4V_d \right)'$$

for some output capacitor voltage V_d , which is attained for $u^* = \frac{V_d}{V_d + E}$. Assume that only the charge x_2 is measured, and address the problem of output feedback stabilization. In order to match (10) and (4), we set $\bar{x} = x - x^*$ and $\bar{u} = u - u^*$. Then (10) can be rewritten as (4) by replacing x by \bar{x} and u by \bar{u} and with

$$A(\bar{u}) = \begin{pmatrix} 0 & -(1 - u^* - \bar{u}) & 0 & 0 \\ 1 - u^* - \bar{u} & 0 & u^* + \bar{u} & 0 \\ 0 & -u^* - \bar{u} & 0 & -1 \\ 0 & 0 & 1 & -\frac{1}{R} \end{pmatrix} P,$$

$$B(\bar{u}) = \bar{u}b \text{ with } b = \begin{pmatrix} C_2 x_2^* \\ L_3 x_3^* - L_1 x_1^* \\ -C_2 x_2^* \\ 0 \end{pmatrix} \text{ and } C = (0, 1, 0, 0).$$

Remark that $u \equiv 1$ and $u \equiv 0$ renders (4) unobservable, since the Kalman observability matrices of the pairs $(C, A(1 - u^*))$ and $(C, A(-u^*))$ are not invertible. So the well-known results for dynamic output feedback stabilization of uniformly observable systems do not apply. Theorem 4 may overcome this difficulty. It remains to check Assumptions 1, 2 and 3.

The system is dissipative since $PA(\bar{u}) + A(\bar{u})'P$ is negative semi-definite for all input \bar{u} . The pair $(C, A(0))$ is observable, and *a fortiori* detectable, since its Kalman observability matrix is full rank as soon as $u^* \neq 1$ and $u^* \neq 0$ *i.e.* $E \neq 0$ and $V_d \neq 0$. Consider the saturated feedback law $\lambda(\bar{x}) = \text{sat}(-\beta b' P \bar{x})$, where $\beta > 0$ is a tuning parameter and sat is a saturation function such that $u^* + \lambda$ lies in $(0, 1)$, which is always possible since $u^* \in (0, 1)$. Then $x \mapsto x' P x$ is a Lyapunov function of the vector field $f : x \mapsto A(\lambda(x))x + B(\lambda(x))$, and according to the LaSalle's invariance principle, the ω -limit set of any trajectory is the largest positively invariant set contained in $\{x \in \mathbb{R}^2 \mid b' P x \equiv 0\}$, which gives $x \rightarrow 0$ when $(b' P, A(0))$ is observable. Hence, for almost all choice of parameters, λ is a globally asymptotically stabilizing feedback law. One may also choose any other locally asymptotically stabilizing feedback law, for example the one given in [5].

Then, Theorem 4 applies, and (6) gives a semi-globally asymptotically stabilizing dynamic output feedback. In Figures 2 and 3, we provide numerical simulations for the following choice of parameters (as in [5]):

Table 1: Numerical values for the simulation of the Čuk converter

L_1	C_2	L_3	C_4
10.9 mH	22.0 μ F	10.9 mH	22.9 μ F
R	E	V_d	β
22.36 Ω	12 V	25 V	10^{-4}

For these values, the pair $(b', A(0))$ is observable, hence λ is a stabilizing state feedback law. We choose the initial conditions $x(0) = 0$ and $\hat{x}(0) = x^*$. In Figure 2, we plot the output voltage $\frac{x_4}{C_4}$ that we want to stabilize at V_d for the state feedback law λ and for the dynamic output feedback based on the Luenberger observer for $\alpha = 1$, $\alpha = 10$ and $\alpha = 100$. In Figure 3, we plot the error between the actual state of the system and the observer for the same values of α . When α is larger, the observer converges faster to the state of the system. For $\alpha = 100$, \hat{x} converges quickly to x , and then the dynamics of x obtained via the dynamic output feedback is close to the one obtained via state feedback. On the contrary $\alpha = 1$ leads

to a slow convergence of the observer. Then, the state dynamics is very close to the one with the constant control $u \equiv \lambda(\hat{x}(0)) = u^*$. Finally, $\alpha = 10$ is a compromise between these two behaviours: the state dynamics is similar to the case where $\alpha = 1$ at the beginning, and to the case where $\alpha = 100$ at the end of the simulation.

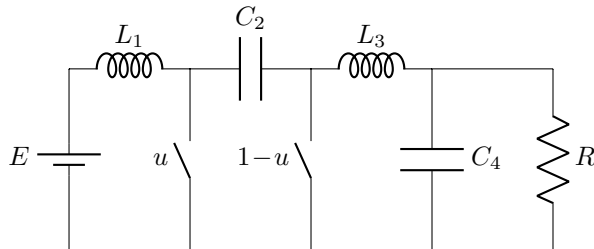


Figure 1: Ideal Ćuk converter.

Remark 15. The matrix $A(0)$ is Hurwitz for any $u^* \in (0, 1)$. Hence, the constant control $\bar{u} = 0$ *i.e.* $u = u^*$ stabilizes the system at the target point. This phenomenon is due to the load resistance R . However, the user does not have any control on R , so this strategy potentially leads to a very slow stabilization. Indeed, taking $R \rightarrow +\infty$ or $R \rightarrow 0$, some eigenvalues of $A(0)$ converge to the imaginary axis. In this case, the damping assignment state feedback is much more efficient, and that is why we build a dynamic output feedback based on this state feedback. A similar remark holds for the next example.

Example 16 (Heat exchanger). In [11] (which we refer reader to for details), a model of a counter-current heat exchanger is introduced. The system is 6-dimensional, and each component x_i of the state represents the temperature of one exchanger's compartment. After a change of coordinates and control (as in the previous Example 14), the system can be rewritten in form of (4) with

$$A(\bar{u}) = \begin{pmatrix} -kI_3 + \gamma_1(u^* + \bar{u})J & kI_3 \\ kI_3 & -kI_3 + \gamma_2J' \end{pmatrix}, \quad B(\bar{u}) = \bar{u}b$$

with $b = (E - \gamma_1x_1^*, \quad \gamma_1(x_1^* - x_2^*), \quad \gamma_1(x_2^* - x_3^*), \quad 0, \quad 0, \quad 0)'$

and $C = (0, \quad 0, \quad 0, \quad 1, \quad 0, \quad 0)$ where I_3 is the 3×3 identity matrix, k, γ_1, γ_2, E are positive physical constants, and

$$J = \begin{pmatrix} -1 & 0 & 0 \\ 1 & -1 & 0 \\ 0 & 1 & -1 \end{pmatrix}.$$

With G a positive physical constant of the system, each control $u^* > 0$ leads to exactly one equilibrium state x^* such that $A(0)x^* = (Eu^*, \quad 0, \quad 0, \quad 0, \quad 0, \quad G)'$. The matrix $A(0)$ is invertible according to [11]. Again, this system is not uniformly observable. Indeed, the determinant of the Kalman observability matrix of the pair $(C, A(\bar{u}))$ is $k^3\gamma_2^6(k^2 - \gamma_1\gamma_2(\bar{u} + u^*))^3$. Hence, the constant input $\bar{u} \equiv \frac{k^2}{\gamma_1\gamma_2} - u^*$ renders (4) unobservable.

However, Theorem 4 may apply if Assumptions 1, 2 and 3 are satisfied. Choose $\lambda(\bar{x}) = \text{sat}(-\beta b'\bar{x})$, where $\beta > 0$ is a tuning parameter and sat is a saturation function such that $u^* + \lambda$ lies in an interval $(0, u_M)$, which is always possible if $u^* \in (0, u_M)$. If the pair $(b', A(0))$ is

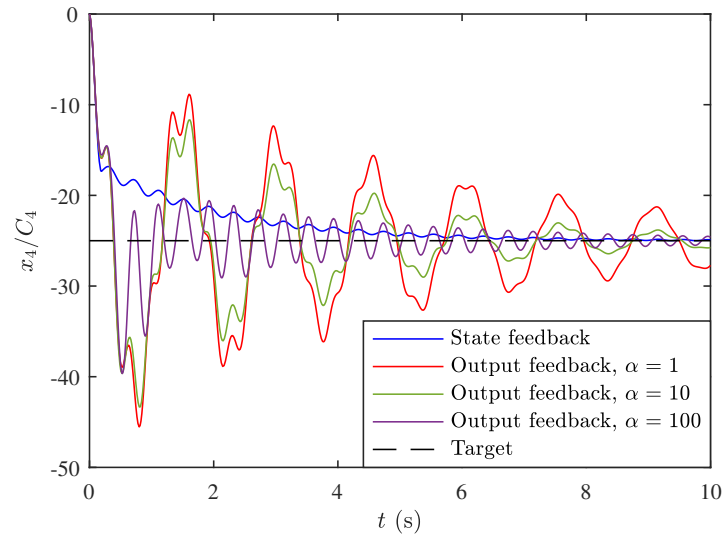


Figure 2: Output voltage of the Ćuk converter with the state feedback law λ and with the corresponding dynamic output feedback law based on the Luenberger observer for different values of α .

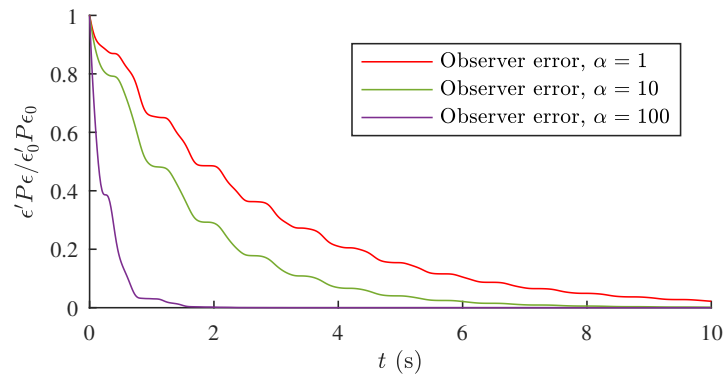


Figure 3: Evolution of the error between the actual state of the Ćuk converter and the observer for different values of α .

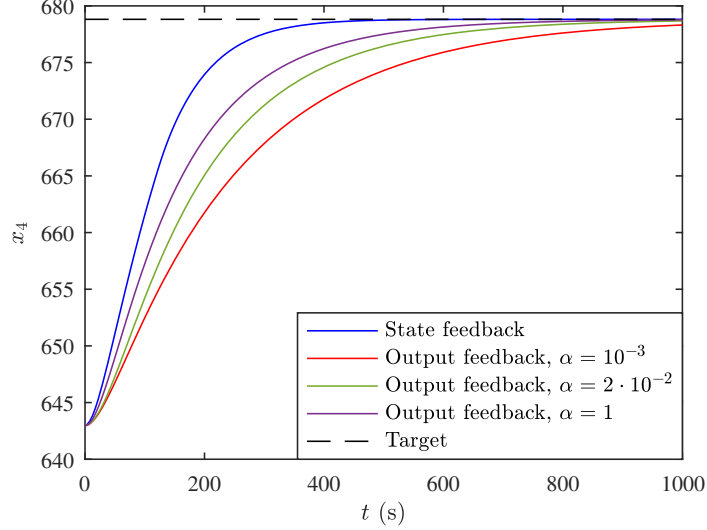


Figure 4: Output enthalpy of the heat exchanger with the state feedback law λ and with the corresponding dynamic output feedback law based on the Luenberger observer for different values of α .

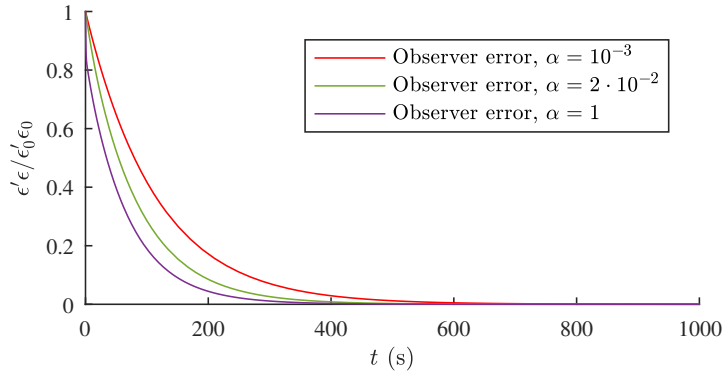


Figure 5: Evolution of the error between the actual state of the heat exchanger and the observer for different values of α .

detectable, we apply the LaSalle's invariance principle to the Lyapunov function $x \mapsto x'x$, and get that x converge towards 0. Then, Assumption 2 is satisfied since $A(\bar{u}) + A(\bar{u})'$ is negative definite when $u^* + \bar{u} > 0$ according to the Gershgorin circle theorem. The pair $(C, A(0))$ is observable, and *a fortiori* detectable, if and only if $u^* \neq \frac{k^2}{\gamma_1 \gamma_2}$. We fix the following parameters, that satisfy all the previous assumptions.

Table 2: Numerical values for the simulation of the heat exchanger

k $1.20 \cdot 10^{-2} \text{ s}^{-1}$	γ_1 $5.06 \cdot 10^{-1} \text{ kg}^{-1}$	γ_2 $1.00 \cdot 10^{-2} \text{ s}^{-1}$	E 360 K
G 300 K	u_M $0.05 \text{ kg} \cdot \text{s}^{-1}$	u^* $0.5u_M$	β 1

Set $\hat{x}(0) = x^*$, and let $x(0)$ be the steady state that corresponds to the constant input

$u \equiv 0.17u_M$. Then Theorem 4 build a dynamic output feedback based on λ and a Luenberger observer. In Figure 4, we plot the evolution of the output x_4 (that we intend to stabilize as in [11]) for the state feedback law λ and for the dynamic output feedback based on the observer for $\alpha = 10^{-3}$, $\alpha = 2 \cdot 10^{-2}$ and $\alpha = 1$. The error between the state and the observer is given in Figure 5 for the same values of α . As in Example 14, the convergence of the observer to the state of the system is faster when α is larger, and then the stabilization of the state with dynamic output feedback gets closer to the one obtained by state feedback.

5 Conclusion

We have shown that for dissipative systems, target detectability is a sufficient condition to move from a locally asymptotically stabilizing state feedback to a semi-globally asymptotically stabilizing dynamic output feedback. In particular, we are able to remove the classical uniform observability assumption. Therefore, this work lays foundations for more general strategies in output feedback stabilization of non-uniformly observable systems, notably via embeddings into dissipative systems.

6 Addendum: Global stabilization

By allowing the observer gain to depend on the output of the system, it is actually possible to obtain a global version of Theorem 4 instead of a semi-global one.

Theorem 17. *If Assumptions 1, 2 and 3 hold, then there exists a locally Lipschitz function $\alpha : \mathbb{R}^n \times \mathbb{R}^p \rightarrow \mathbb{R}_+$ such that $(0, 0)$ is an asymptotically stable equilibrium point with basin of attraction containing $\mathcal{D} \times \mathbb{R}^n$ of*

$$\begin{cases} \dot{\hat{x}} = A(\lambda(\hat{x}))\hat{x} + B(\lambda(\hat{x})) - \alpha(\hat{x}, C\varepsilon)P^{-1}C'C\varepsilon \\ \dot{\varepsilon} = \left(A(\lambda(\hat{x})) - \alpha(\hat{x}, C\varepsilon)P^{-1}C'C \right) \varepsilon. \end{cases} \quad (11)$$

Proof. Let \mathcal{D} and f be as in Assumption 1, and P as in Assumption 2. For all $(\hat{x}, y) \in \mathbb{R}^n \times \mathbb{R}^p$, let $k(\hat{x}, y) = -\alpha(\hat{x}, y)P^{-1}C'y$. According to the converse Lyapunov theorem (see e.g. [9]), there exists a proper function $W \in C^\infty(\mathcal{D}, \mathbb{R}_+)$ such that $W(0) = 0$ and

$$\frac{\partial W}{\partial x}(x)f(x, \lambda(x)) \leq -W(x), \quad \forall x \in \mathcal{D}. \quad (12)$$

For all $r > 0$, set $D(r) = \{x \in \mathbb{R}^n \mid V(x) \leq r\}$ which is a compact subset of \mathcal{D} . Let $\alpha : \mathbb{R}^n \times \mathbb{R}^p \rightarrow \mathbb{R}_+$ be the function defined for all $(\hat{x}, y) \in \mathbb{R}^n \times \mathbb{R}^p$ by

$$\alpha(\hat{x}, y) = -\frac{\max\{W(\hat{x}), 1\}}{2 \left(1 + \left| \frac{\partial W}{\partial x}(\hat{x}) \right| \right) (1 + |P^{-1}C'y|)}. \quad (13)$$

Note that α is locally Lipschitz and $\alpha(\hat{x}, y) > 0$ for all $(\hat{x}, y) \in \mathbb{R}^n \times \mathbb{R}^p$. Also, it yields

$$|k(\hat{x}, y)| \leq \frac{\max\{W(\hat{x}), 1\}}{2 \left(1 + \left| \frac{\partial W}{\partial x}(\hat{x}) \right| \right)}, \quad \forall (\hat{x}, y) \in \mathbb{R}^n \times \mathbb{R}^p. \quad (14)$$

Step 1: local asymptotic stability Since $\alpha(0, 0) > 0$, the linearization of (11) at $(0, 0)$ may be rewritten in the form of (8) and the proof of local asymptotic stability follows from

Section 3.1.

Step 2: all trajectories are bounded. Consider the function $V : \varepsilon \mapsto \varepsilon' P \varepsilon$. For all initial conditions $(\hat{x}_0, \varepsilon_0) \in \mathcal{D} \times \mathbb{R}^n$, the solution of the closed-loop system (11) denoted $(\hat{x}(\cdot), \varepsilon(\cdot))$ satisfies

$$\begin{aligned} \frac{dV(\varepsilon)}{dt} &= \varepsilon' P \dot{\varepsilon} + \dot{\varepsilon}' P \varepsilon \\ &= \varepsilon' (PA(\lambda(\hat{x})) + A(\lambda(\hat{x}))' P) \varepsilon - 2\alpha \varepsilon' C' C \varepsilon \\ &\leq -2\alpha |C\varepsilon|^2 && \text{(by Assumption 2)} \\ &\leq 0. \end{aligned}$$

Hence, ε remains in a compact set.

Moreover, for all $(\hat{x}, y) \in \mathbb{R}^n \times \mathbb{R}^p$,

$$\begin{aligned} \frac{\partial V}{\partial x}(\hat{x})[f(\hat{x}, \lambda(\hat{x})) + k(\hat{x}, y)] &\leq -W(\hat{x}) + \frac{\partial V}{\partial x}(\hat{x})k(\hat{x}, y) \\ &\leq -W(\hat{x}) + \left| \frac{\partial V}{\partial x}(\hat{x}) \right| |k(\hat{x}, y)| \\ &\leq -W(\hat{x}) + \left| \frac{\partial V}{\partial x}(\hat{x}) \right| \frac{\max\{W(\hat{x}), 1\}}{2 \left(1 + \left| \frac{\partial V}{\partial x}(\hat{x}) \right|\right)} \\ &\leq -W(\hat{x}) + \frac{1}{2} \max\{W(\hat{x}), 1\}. \end{aligned}$$

Hence, if $\hat{x} \in \mathcal{D} \setminus D(1)$,

$$\frac{\partial V}{\partial x}(\hat{x})(f(\hat{x}, \lambda(\hat{x})) + k(\hat{x}, y)) \leq -\frac{1}{2}W(\hat{x}). \quad (15)$$

Thus

$$W(\hat{x}) \leq \max\{W(\hat{x}_0), 1\},$$

In other words, \hat{x} remains in $D(1) \cup D(W(\hat{x}_0))$ which is a compact subset of \mathcal{D} . Thus, solutions of (11) are complete in positive time.

Step 3: all trajectories converge to 0. Since all trajectories of (11) are bounded from Step 2, the proof of convergence is identical to Section 3.3. □

Acknowledgments

The authors would like to thank Bertrand Zitte, Boussad Hamroun, Françoise Couenne and Daniele Astolfi (authors of [11]) for many fruitful discussions about physical systems satisfying the assumptions under consideration.

This research was funded by the French Grant ANR ODISSE (ANR-19-CE48-0004-01).

References

- [1] L. Brivadis, J.-P. Gauthier, L. Sacchelli, and U. Serres. Avoiding observability singularities in output feedback bilinear systems. preprint, July 2019.

- [2] J.-M. Coron. On the stabilization of controllable and observable systems by an output feedback law. *Math. Control Signals Systems*, 7(3):187–216, 1994.
- [3] J.-P. Gauthier and I. Kupka. *Deterministic observation theory and applications*. Cambridge University Press, Cambridge, 2001.
- [4] M. Lagache, U. Serres, and J. Gauthier. Exact output stabilization at unobservable points: Analysis via an example. In *2017 IEEE 56th Annual Conference on Decision and Control (CDC)*, pages 6744–6749, Dec 2017.
- [5] H. Rodriguez, R. Ortega, and G. Escobar. A new family of energy-based non-linear controllers for switched power converters. In *ISIE 2001. 2001 IEEE International Symposium on Industrial Electronics Proceedings (Cat. No. 01TH8570)*, volume 2, pages 723–727. IEEE, 2001.
- [6] H. Shim and A. Teel. Asymptotic controllability and observability imply semiglobal practical asymptotic stabilizability by sampled-data output feedback. *Automatica*, 39(3):441 – 454, 2003.
- [7] E. D. Sontag. *Mathematical control theory: deterministic finite dimensional systems*, volume 6. Springer Science & Business Media, 2013.
- [8] A. Teel and L. Praly. Global stabilizability and observability imply semi-global stabilizability by output feedback. *Systems Control Lett.*, 22(5):313–325, 1994.
- [9] A. R. Teel and L. Praly. A smooth Lyapunov function from a class- \mathcal{KL} estimate involving two positive semidefinite functions. *ESAIM: Control, Optimisation and Calculus of Variations*, 5:313–367, 2000.
- [10] A. van der Schaft, D. Jeltsema, et al. Port-hamiltonian systems theory: An introductory overview. *Foundations and Trends® in Systems and Control*, 1(2-3):173–378, 2014.
- [11] B. Zitte, B. Hamroun, D. Astolfi, and F. Couenne. Robust control of a class of bilinear systems by forwarding: Application to counter current heat exchanger. preprint, Nov 2019.