



Local mechanical description of an elastic fold

Frederic Lechenault, T. Jules, Mohktar Adda-Bedia

► To cite this version:

Frederic Lechenault, T. Jules, Mohktar Adda-Bedia. Local mechanical description of an elastic fold. *Soft Matter*, 2019, 15 (7), pp.1619-1626. 10.1039/C8SM01791C . hal-02355586v2

HAL Id: hal-02355586

<https://hal.science/hal-02355586v2>

Submitted on 8 Nov 2019

HAL is a multi-disciplinary open access archive for the deposit and dissemination of scientific research documents, whether they are published or not. The documents may come from teaching and research institutions in France or abroad, or from public or private research centers.

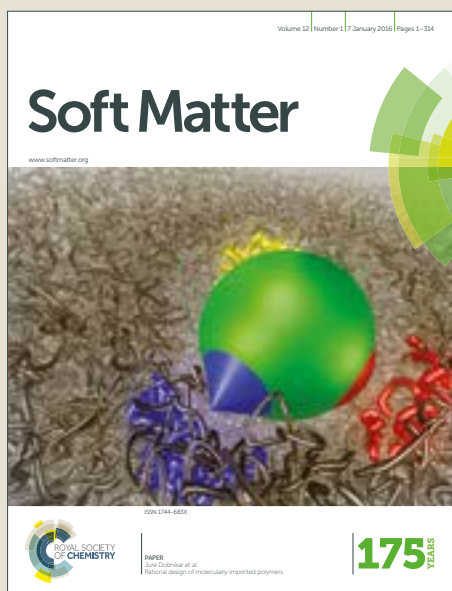
L'archive ouverte pluridisciplinaire **HAL**, est destinée au dépôt et à la diffusion de documents scientifiques de niveau recherche, publiés ou non, émanant des établissements d'enseignement et de recherche français ou étrangers, des laboratoires publics ou privés.

Soft Matter

Accepted Manuscript



This article can be cited before page numbers have been issued, to do this please use: T. Jules, F. Lechenault and M. Adda-Bedia, *Soft Matter*, 2019, DOI: 10.1039/C8SM01791C.



This is an Accepted Manuscript, which has been through the Royal Society of Chemistry peer review process and has been accepted for publication.

Accepted Manuscripts are published online shortly after acceptance, before technical editing, formatting and proof reading. Using this free service, authors can make their results available to the community, in citable form, before we publish the edited article. We will replace this Accepted Manuscript with the edited and formatted Advance Article as soon as it is available.

You can find more information about Accepted Manuscripts in the [author guidelines](#).

Please note that technical editing may introduce minor changes to the text and/or graphics, which may alter content. The journal's standard [Terms & Conditions](#) and the ethical guidelines, outlined in our [author and reviewer resource centre](#), still apply. In no event shall the Royal Society of Chemistry be held responsible for any errors or omissions in this Accepted Manuscript or any consequences arising from the use of any information it contains.

Local Mechanical Description of an Elastic Fold

T. Jules^{1,2}, F. Lechenault¹, and M. Adda-Bedia²

¹*Laboratoire de Physique Statistique, Ecole Normale Supérieure,
PSL Research University, Sorbonne University, CNRS, F-75231 Paris, France and*

²*Université de Lyon, Ecole Normale Supérieure de Lyon,
Université Claude Bernard, CNRS, Laboratoire de Physique, F-69342 Lyon, France*

(Dated: January 11, 2019)

To go beyond the simple model for the fold as two flexible surfaces or faces linked by a crease that behaves as an elastic hinge, we carefully shape and anneal a crease within a polymer sheet and study its mechanical response. First, we carry out an experimental study that consists in recording both the shape of the fold in various loading configurations and the associated force needed to deform it. Then, an elastic model of the fold is built upon a continuous description of both the faces and the crease as a thin sheet with a non-flat reference configuration. The comparison between the model and experiments yields the local fold properties and explains the significant differences we observe between tensile and compression regimes. Furthermore, an asymptotic study of the fold deformation enables us to determine the local shape of the crease and identify the origin of its mechanical behaviour.

The process of folding solves the necessity of reducing the space occupied by a large slender object while keeping the possibility of recovering its original shape. Examples of this mechanism are common in nature such as leaves which grow folded inside buds before blooming [1–3] or insects that fold their wings inside shells on the ground and deploy them on flight [4–6]. To add to their mandatory use, folds allow for shaping on demand three-dimensional structures starting from a two-dimensional thin plate [7]. Two extreme examples of such objects are crumpled paper [8, 9] and origami. The latter is literally the art of folding paper with a specific pattern into sculptures such as the famous paper crane. While origami can be pleasing to the eye, the selection of specific folding patterns generates original properties for the resulting object such as an apparent negative Poisson ratio [10]. When coupled with the elasticity of the constituent material, origami-based metamaterials are able to generate structures with a wide scope of programmable mechanical properties [11–14] and shapes [15–17]. The apparent scalability of origami allows for applications that range from small scales with the folding of DNA strands [18] or tunable microscopic origami machines [19] to large scales with biological systems [20, 21] or the transport of deployable structures in space [22].

Before studying origami patterns made of a complex network of folds, one should first decipher the behaviour of their most fundamental element: a single fold. Frequently, a fold is defined as two planar surfaces linked by a hinge-like crease setting an angular discontinuity in the structure. From there, different assumptions are made about its properties. If one considers a purely geometrical approach, the faces are assumed to be rigid panels while the crease angle is a degree of freedom of the system. In this case, self-avoidance and kinematic constraints impose relations between the different crease angles of a given origami structure [10, 23] that constrain the corresponding degrees of freedom. While this model is fine for origami-like systems with rigid structures such

as solar panels or dome constructions [24], it fails to describe either the deformation of faces in folded membranes [11] or the “snapping” of peculiar bistable origami systems [12, 25–27]. For that, one should take into account both the flexibility of the faces and the mechanical properties of the crease. The former is extensively described by the mechanics of thin elastic sheets [28]. For the latter, experimental work shows a linear response between the moment generated by the crease and its opening angle [29]. Yet, neither the process by which the crease is created nor the materials properties have been linked to the crease rigidity.

In this paper, we will experimentally probe the mechanical response of a single elastic fold. We extend a previous model of the crease acting as a discontinuity between two flexible faces to a new approach in which the crease is described within a continuous fold. This model thoroughly explains the shape of the stressed fold and gives its local mechanical response. We analyse the interesting differences between compressive and tensile loadings of the fold and use the crease reference shape to characterise its elastic behaviour.

I. EXPERIMENTS

We use rectangular flat Polyethylene terephthalate (Mylar) sheets and cut them into strips of length $2L = 10\text{cm}$, width $W = 3\text{cm}$ and thickness $h = 130\mu\text{m}$. We manually pre-crease a strip at half its length and fold it under a 10kg weight for 1 hour. The heavy weight and the plasticity of the material produce the necessary persistent crease of the fold. Then, both free ends of the sample are clamped vertically in an Instron device. The bottom clamp is locked while the upper one is mobile and fixed under a 50N stress gauge which records the vertical applied force F_x . To track the shape of the fold, we place a high resolution camera 1 meter away from the device and takes photos of the red coloured side of the fold with

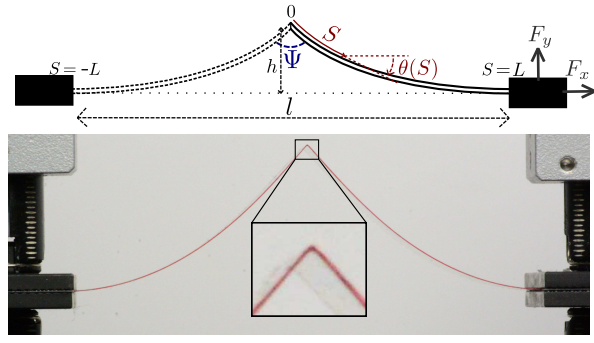


FIG. 1. Schematics (upper panel) and image (lower panel) of the experimental setup with a zooming of the region around the crease.

a resolution of $25\mu\text{m}/\text{pixel}$ that allows for a fine characterisation of the crease (see Fig. 1). Both the distance l between clamps, the speed of applied deformation and image acquisition are controlled concomitantly.

A crucial experimental task is the conception of folds with reproducible assigned properties. Our folding process leads to irreversible damaging of the material that induces plastic yielding in the vicinity of the creased region. To check this, we probe the mechanical response of a folded sample through an opening and closing cycle. Inset of Fig. 2 shows that the system is indeed hysteretic. During the cycle, the local stress at the crease is sufficient to cross the plasticity threshold, resulting in a change of the reference configuration [30]. Moreover, the creep inherent to the folding process pushes the system at out of equilibrium: it undergoes continuous relaxation [31, 32]. However, for the present study, it is desirable that the reference state of the fold does not change during the probing of the fold as our aim is to decipher the system's elastic response only. To take care of both problems, we anneal the fold in a mould that fixes the crease angle (here at $\pi/2$) by first putting the sample in an oven for 45 minutes at a temperature of 110°C and then cooling it down at room temperature. Notice that the glass transition temperature of Mylar is 80°C . This new experimental protocol allows us to recover a reversible mechanical response of the fold (see Fig. 2). Consequently, the sample can be considered as purely elastic and each intermediate state of the system is at mechanical equilibrium. Alternatively, the results can be reproduced if we cycle the sample many times to reach a more open rest angle, however with poor control over its value.

II. FOLD MODELS

The mechanical response of the fold, shown in Fig. 2, results from the deformation of both the faces through pure bending and the crease rigidity. To extract the detailed response one should introduce a fold model that separates the contributions of the panels from the creases.

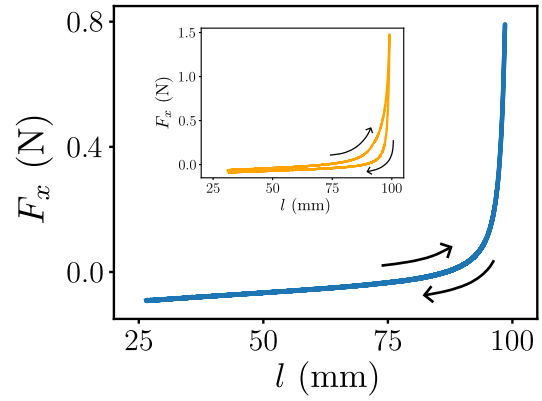


FIG. 2. Mechanical response of a folded mylar sheet during the first unfolding-folding cycle. Here, l is the distance between the clamps and F_x is the applied force. The main figure corresponds to an annealed sample while the inset shows the same sample before annealing. The arrows indicate the direction of the displacement of the upper clamped edge.

In the following, we expose two possible models

A. Point-like Crease

A simple model consists in assuming the fold shown in Fig. 1 as two panels of equal length connected by a crease line [29]. The fold acquires a given equilibrium shape imposed by the combination of applied displacement between clamps and boundary conditions at both the crease and the clamps. The system has a translational symmetry along the fold width, so a two-dimensional profile is sufficient to infer the entire shape. The fold is parametrised by the curvilinear coordinate S and the local angle $\theta(S)$ between the tangential vector to the profile line and the horizontal. Here, we define the crease as an elastic hinge between two faces that is solely described by an angular discontinuity Ψ at $S = 0$:

$$\Psi = \pi + \theta(0^+) - \theta(0^-), \quad (1)$$

with a given energy $U(\Psi)$ per unit length. To determine the equilibrium shape of the fold, we start by writing the Lagrangian of the system

$$\begin{aligned} \mathcal{L} = & \frac{BW}{2} \int_{-L}^L \theta'(S)^2 dS - F_x L \int_{-L}^L \cos \theta(S) dS \\ & - F_y L \int_{-L}^L \sin \theta(S) dS + WU(\Psi), \end{aligned} \quad (2)$$

where $\theta'(S) = d\theta/dS$ and B is the bending stiffness of the sheet. The first term is the bending energy of the faces. The second and third terms are the works exerted at the clamps to maintain the imposed distance between clamps and their alignment. F_x and F_y are Lagrangian multipliers associated to the external horizontal and vertical forces applied at the clamps. Finally, the last term

in Eq. (2) is the energy of the crease. In the Appendix, we show that the minimisation of \mathcal{L} yields the equilibrium Elastica equation satisfied by the fold

$$\theta''(S) - \frac{F_x}{BW} \sin \theta(S) + \frac{F_y}{BW} \cos \theta(S) = 0. \quad (3)$$

In addition, the boundary terms resulting from the minimisation read

$$B \left([\theta'(S) \delta \theta(S)]_{-L}^{0^-} + [\theta'(S) \delta \theta(S)]_{0^+}^L \right) + \frac{dU}{d\Psi} (\delta \theta(0^+) - \delta \theta(0^-)) = 0. \quad (4)$$

Recall that the fold is clamped at its boundaries, thus the angles $\theta(\pm L)$ are prescribed. The additional boundary conditions at $S = 0$ resulting from Eq. (4) read

$$\frac{1}{B} \frac{dU}{d\Psi} = \theta'(0^+) = \theta'(0^-). \quad (5)$$

When the clamps are perfectly aligned one has $\theta(\pm L) = 0$ which, coupled to the condition $\theta'(0^+) = \theta'(0^-)$, gives a solution for $\theta(S)$ that is mirror symmetric with respect to $s = 0$. For this case, Eq. (3) allows us to show that $F_y = 0$. Finally, we can link $U(\Psi)$ to the macroscopic moments in our system. Integrating Eq. (3) from $S = 0^+$ to $S = L$ gives

$$\frac{dU}{d\Psi} = \frac{F_x h}{W} + B\theta'(L), \quad (6)$$

where $h = \int_L^0 \sin \theta(S) dS > 0$. The energy of the crease balances the moments resulting from the applied force and the bending moment of the faces. Notice that the latter was absent in the analysis of Ref. [29], an assumption which is valid for large opening angles of the fold, or equivalently for large applied forces. Only in this case, the condition $\theta'(L) \approx 0$ holds. However, this approximation is insufficient to describe precisely the case of a compressed fold where the moment at the clamp becomes important.

B. Extended Crease

As apparent in Fig. 1, our experimental fold is a continuous mechanical system and the crease has a local extension. The description of the crease as a line discontinuity in the local angle might be a reasonable approximation because of separation of scales between the crease extension and system size. Nevertheless, during the crease inception, the system remains continuous and should be considered as so. By construction, the fold is prestressed and its rest configuration is not planar. Therefore, prior to any mechanical testing, one should determine the reference configuration of the fold $\theta_0(S)$ that describes the system in the absence of external loading. Fig. 3 shows

that the reference configuration of the fold is well described by

$$\theta_0(S) = \frac{\Psi_0 - \pi}{2} \tanh \left(\frac{S}{S_0} \right), \quad (7)$$

where S_0 is a characteristic size of the crease region and Ψ_0 is the asymptotic angle of the fold. We can envision our system as an elastic plate for which the sheet has a non-Euclidean reference metric \bar{g} [33]. The sheet is free of in-plane strains only if its actual metric satisfies $g = \bar{g}$. This solution would correspond to a folded pattern described by the non-uniform field $\theta_0(S)$.

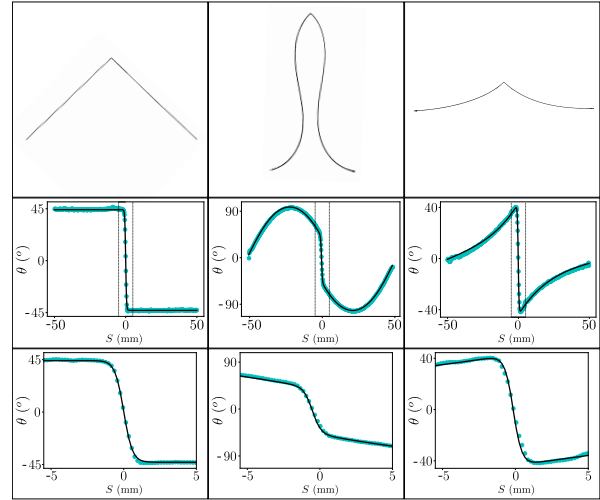


FIG. 3. Experimental and numerical profile of the fold for three representative configurations. Black and white images of the coloured side of the fold are shown in the first row. The second row shows the corresponding evolution of the local angle θ along the curvilinear coordinate S extracted from experiments (blue points) and computed numerically (solid black line). The last row shows magnified the same curves around the crease. The first column shows the rest state of the fold. The numerical fitting is made using Eq. (7) with $\Psi_0 = 92.4^\circ$ and $S_0 = 0.6\text{mm}$. The second and third columns are respectively examples of a compressed fold with $F_x = -0.127\text{N}$ and $l = 24.5\text{mm}$ and a fold under tension with $F_x = 0.094\text{N}$ and $l = 94\text{mm}$. The computed solutions are found by solving numerically Eq. (9) with $\alpha = -10.5$, $\theta(-1) = 7.1^\circ$ and $\theta'(-1) = 4.94$ for the compressed fold and $\alpha = 4.65$, $\theta(-1) = -1.4^\circ$ and $\theta'(-1) = 0.44$ for the stretched fold.

In the presence of external loading, the local elastic deformation of the fold should be defined with respect to the local rest state. Inspired by the elastic theory of non-Euclidean plates [33], we postulate that the elastic energy density of a folded sheet is given by $\frac{BW}{2}(\theta'(S) - \theta'_0(S))^2$. This expression obviously satisfies a zero energy density for a fold at rest and thus can be interpreted as a bending energy density of a pre-strained elastic plate. To describe the equilibrium state of the fold, we use the

same formalism as for the point-like crease but without a separation between the crease region and the panels. We start with a new Lagrangian:

$$\mathcal{L} = \frac{BW}{2} \int_{-L}^1 (\theta'(L) - \theta'_0(L))^2 dL - F_x \int_{-L}^L \cos \theta(S) dS - F_y L \int_{-L}^L \sin \theta(S) dS. \quad (8)$$

As in the case of a point-like crease, the minimisation of \mathcal{L} leads to the equilibrium equation satisfied by the fold shape

$$\theta''(S) - \theta''_0(S) - \frac{\alpha}{L^2} \sin \theta(S) + \frac{\beta}{L^2} \cos \theta(S) = 0, \quad (9)$$

where α and β are dimensionless numbers defined by

$$\alpha = \frac{F_x L^2}{BW}, \quad \beta = \frac{F_y L^2}{BW}. \quad (10)$$

The boundary terms resulting from the minimisation are given by

$$[(\theta'(S) - \theta'_0(S))\delta\theta(S)]_{-L}^L = 0. \quad (11)$$

For a clamped fold, Eq. (11) is satisfied because the angles θ are fixed at the boundaries. However, for a free standing fold one should impose $\theta'(\pm L) = \theta'_0(\pm L)$ allowing to recover the rest configuration $\theta(L) = \theta_0(L)$ in the absence of external loading ($F_x = F_y = 0$).

This approach has the advantage to provide us with a continuous description of the fold deformation. In the sequel, we discuss our experimental results within this framework and rationalise the characterisation of the crease.

III. RESULTS

Eq. (9) combined with two prescribed conditions at $S = \pm L$ can be solved using classical numerical methods. Our experimental setup suffers from unavoidable slight imperfections which are mainly due to misalignment of the clamps that induces uncertainties on the boundary conditions. Moreover, image filtering prevents us from getting access to the exact values of $\theta(\pm 1)$. For compressed configurations of the fold, small variations in the boundary conditions could yield significantly different shapes of the Elastica. To take into account these experimental limitations, we solve Eq. (9) using an iterative scheme in which not only α and β are shooting parameters but also $\theta(-1)$ and $\theta'(-1)$. The four parameters are fixed by fitting the whole shape of the fold to the experimental one. This is done by minimising the sum of the distances between the numerical points and the corresponding experimental ones. The existence and uniqueness of the solution of the Elastica equation ensure that

there is a single set of parameters ($\alpha, \beta, \theta(-1), \theta'(-1)$) for each experimental profile. The argument in [34] proceeds from a local continuity argument, which can be imported into our situation in a straightforward manner. Recall that if $\theta(\pm 1) = 0$ the profile should be mirror-symmetric with respect to $s = 0$ and consequently $\beta = F_y = 0$. Our numerical scheme quantifies correctly the small deviations from perfect alignment of the clamps and gives $\theta(\pm 1) \approx 0$ and $|\beta| \ll 1$ for the whole range of applied deformations.

Fig. 3 shows a good agreement between theory and experiment regardless of the applied loading. An output of the resolution is the mechanical response of the fold: the parameter $\alpha = F_x L^2 / BW$ is determined for each loading test. As a safety test, Fig. 4 shows that the comparison between theoretical results and experiments allows us to recover a constant value of the bending modulus B . As shown in the following, the computed profiles serve two purposes. They both assess the robustness of the fold model and contain insights on the local deformation and mechanical response of the creased region.

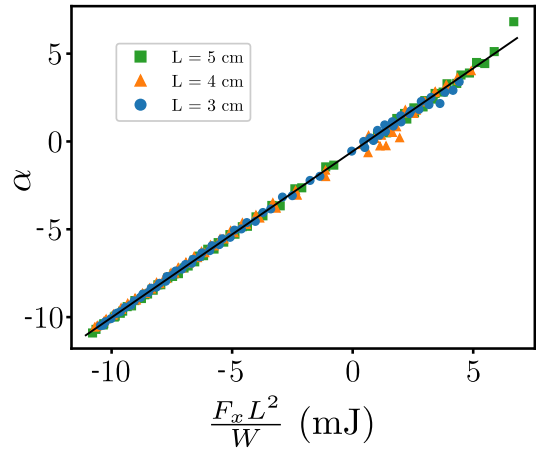


FIG. 4. Dimensionless parameter α , computed numerically, as function of $F_x L^2 / W$, measured experimentally. The value of $B = 1.07 \text{ mJ}$ is inferred from the inverse of the slope of the linear fit represented by the solid line.

A. Compression and extension of the fold

To analyse the behaviour of the fold in the vicinity of the crease, we introduce the local angular deformation $\Delta\theta(S) = \theta(S) - \theta_0(S)$. We call its derivative $\Delta\theta'(S)$ the local apparent curvature and it represents the local difference between deformed and residual curvature. Fig. 5 shows the evolution of $\Delta\theta(S)$ and $\Delta\theta'(S)$ for different applied forces F_x and allows for interesting observations. First, for $F_x = 0$, the apparent moment, proportional to the apparent curvature, is constant along the fold. This behaviour can be retrieved from the equations of the extended fold model. Plugging $\alpha = \beta = 0$ in Eq. (9) and

using the boundary conditions $\theta(\pm L) = 0$ yields

$$\theta(S) = \theta_0(S) - S \theta'_0(L). \quad (12)$$

Using Eq. (7) with $S_0 \ll L$ allows us to write

$$\theta(S) = \frac{\Psi_0 - \pi}{2} \left[\tanh\left(\frac{S}{S_0}\right) - S \right]. \quad (13)$$

This solution agrees quantitatively both with experiments and the numerics. Therefore, the equilibrium shape given by Eq. (13) can be considered as the physical reference configuration of the fold constrained by the experimental situation of Fig. 1. Since no external forces are applied, the moment imposed by the clamping process is completely compensated by the one created by the crease opening.

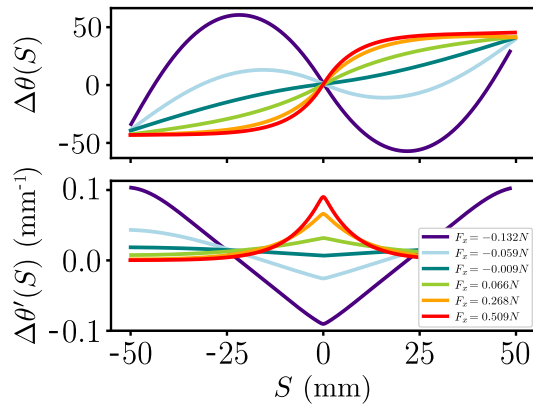


FIG. 5. Local deformation $\Delta\theta(S)$ and its derivative $\Delta\theta'(S)$ as functions of the curvilinear coordinate S . These curves are obtained using the profiles computed numerically for different values of the force F_x .

Eq. (13) shows that $\theta'(0) > 0$ for $F_x = 0$. Therefore, the sign of F_x is insufficient to clearly define whether the crease is opening or closing with respect to its machined residual angle Ψ_0 . As both the evolution of F_x and the deformation angle are continuous during the experiment (see Fig. 5), there exists a negative value of the force for which $\theta'(0) = 0$.

The local moment also highlights the differences between tensile and compressional regimes. In tension, the kinetic constraints force the faces to be almost flat as it maximises the length along the x -axis. The stored elastic energy generated from the work of the external force concentrates on the region where the fold is not flat in the reference state: the crease. Since this region is smaller than the fold length, the deformation quickly becomes harder to increase. This explains why the force increases quickly with l in the tensile regime. Yet, this does not happen in compression, as the geometry allows the faces to bend and store elastic energy. This produces the S-shape often observed with constrained Elastica [34]. The external work spreads along the whole fold, reaching local extrema for the stress at the crease but also at each

clamp. Consequently, if the stress is large enough to reach the plasticity threshold, not only the central crease reference state changes, but a plastic zone can also appear at the clamped edges.

B. Asymptotic behaviour and crease length

To link the continuous fold model to the point-like crease, we need to identify the region of the fold that we call the crease, its spatial extension and mechanical properties. The profile $\theta(S)$ of the continuous fold is governed by Eq. (9) which contains two source terms $\theta''_0(S)$ and $\frac{F_x}{BW} \sin \theta(S)$. They both depend on the position in the fold as shown in the inset of Fig. 6.

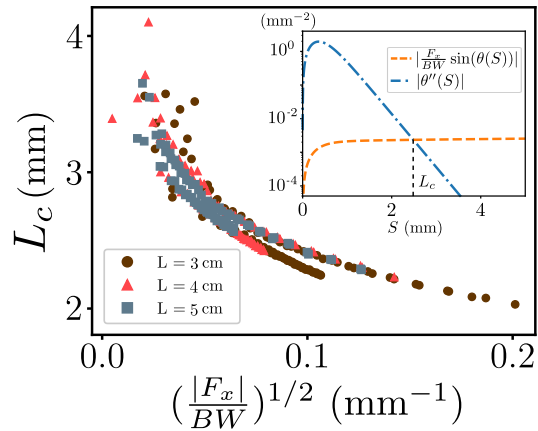


FIG. 6. Critical length scale L_c as defined by Eq. (17) as a function of the inverse length $(|F_x|/BW)^{1/2}$ for different values of L . Inset: log-lin curve of the absolute value of each term in Eq. (9) with $\beta = 0$ near the crease for $F_x = -0.092\text{N}$.

The term $\theta''_0(S)$ characterises the local evolution of the residual moment and is crucial to define the extension of the crease as it does not appear in a point-like description. This term dominates Eq. (9) near the fold centre and simplifies it in this region to:

$$\theta''(S) - \theta''_0(S) = \Delta\theta''(S) = 0. \quad (14)$$

Since $\theta_0(S)$ is a continuous function, the local angular deformation is simply given by:

$$\Delta\theta(S) = TS, \quad (15)$$

where T is the unique integration constant as the symmetry of the system enforces $\theta(0) = 0$. One meaningful consequence of Eq. (15) is that the apparent moment in the vicinity of the fold center is constant.

Far from this region, the second term which represents the action of the external force becomes dominant. In this case, Eq. (9) is simplified into

$$\theta''(S) - \frac{F_x}{BW} \sin \theta(S) = 0. \quad (16)$$

This is the classical Elastica equation used for the discontinuous crease approach to describe bending of the panels. The cross-over between these asymptotic regimes occurs near $S = L_c$, where L_c is a length scale that satisfies the condition

$$\theta_0''(L_c) = \left| \frac{F_x}{BW} \right| \sin \theta(L_c). \quad (17)$$

Fig. 6 shows that the dependency on the external constraint through α makes L_c largely varying with loading. This confirms that L_c is a poor candidate to characterise the length scale of the crease. The only remaining length scale in this problem is the characteristic length S_0 introduced by the rest shape of the fold. As shown in Fig. 7, S_0 gives the right order of magnitude for the extension of the crease. However, it does not separate correctly the crease from the faces, as it is still in the middle of a region where the local moment is still highly varying. To do better, we focus on the physical reference state of the fold ascribed by the experimental configuration of Fig. 1. In that case, the system reaches its minimal elastic energy when $F_x = 0$ and the shape of the fold is given by Eq. (13). We propose to define the extension of the crease S_c such that the moment at its endpoints vanishes ($\theta'(\pm S_c) = 0$). Using Eq. (13) and the assumption that $S_0 \ll L$, one finds

$$S_c = \frac{S_0}{2} \ln \left(\frac{4L}{S_0} \right). \quad (18)$$

Eq. (18) shows that S_c/S_0 exhibits a weak logarithmic dependency on L/S_0 such that $S_0 < S_c \ll L$. As the length of the fold is increased, one has $S_c/L \rightarrow 0$ reaching the point-like crease model. While S_c is defined with respect to the physical reference configuration, Fig. 7 shows that its location within the fold is a clear separation point between two regions with different responses for all loading configurations.

Using Eq. (1) and the symmetry of our system, it is legitimate to define the opening angle of the crease Ψ as

$$\Psi = \pi + 2\theta(S_c), \quad (19)$$

and the crease rest angle as $\Psi_0 = \pi + 2\theta_0(S_c)$. As $S_c > S_0$, the value of Ψ_0 remains close to the one defined by Eq. (7). The bending energy stored in the crease is given by

$$U_{crease} = \frac{BW}{2} \int_{-S_c}^{S_c} \Delta\theta'(S)^2 dS, \quad (20)$$

Fig. 7.(b) shows that U_{crease} is indeed quadratic in the angular crease opening. As $S_c < L_c$, one can derive an analytical expression of the bending energy inside the crease. Using Eq. (15) one shows that

$$\Delta\theta'(S) = \frac{\Delta\theta(S_c)}{S_c} = \frac{\Psi - \Psi_0}{2S_c}. \quad (21)$$

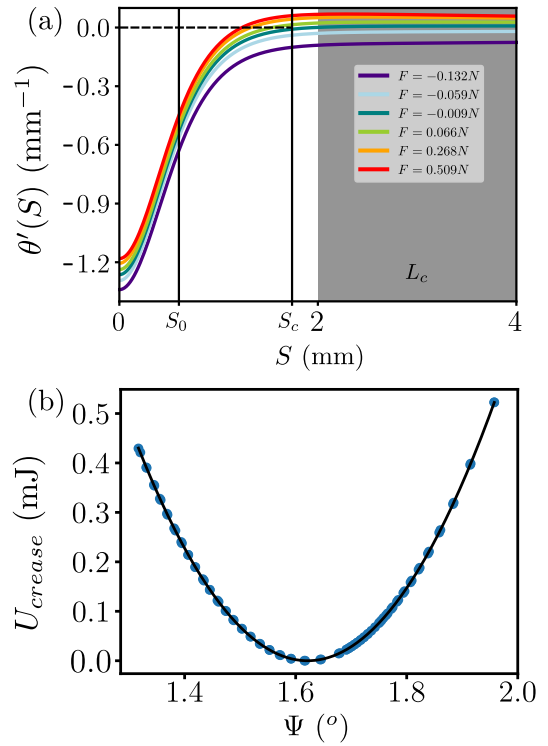


FIG. 7. (a) Local curvature $\theta'(S)$ near the crease for different external loadings. The three characteristic lengths S_0 , S_c and L_c are shown, the shaded area corresponds to the region of variation of L_c . (b) Bending energy of the crease U_{crease} , as defined by Eq. (20), as a function of the crease opening Ψ as defined by Eq. (19). Both quantities are computed from the numerical fitting of the experimental shape and each blue point corresponds to one photo. The solid line is a quadratic fit $U_{crease} = \kappa W (\Psi - \Psi_0)^2 / 2$ with $\Psi_0 = \pi + 2\theta_0(S_c) = 92.9^\circ = 1.62\text{rad}$ and $\kappa = B/2S_c = 308\text{mJ.m}^{-1}.\text{rad}^{-2}$.

Injecting this expression into Eq. (20), one finds the dependency of the crease energy with its angular opening

$$U_{crease} = \frac{BW}{4S_c} (\Psi - \Psi_0)^2. \quad (22)$$

Eq. (22) shows that the crease behaves as a torsional hinge described by a single linear stiffness constant κ given by

$$\kappa = \frac{B}{2S_c}. \quad (23)$$

The comparison between the rigidity of the crease and the elasticity of the faces brings out a characteristic origami length scale $L^* = B/\kappa = 2S_c$ [29].

IV. DISCUSSION

We propose a detailed description of a single elastic fold under mechanical solicitations. Experimental pro-

files are compared to the shape predicted by a continuous elastic model. Then, we use the local properties derived from the model to explain the differences between compression and tension of the fold, the linear relation between the crease opening and the corresponding apparent moment, but also generate a characteristic length marking the transition between the crease and flat elastic faces. In the case of a fold long enough for this length to be negligible, the extended model is linked to the point-like one and sets the relation between the crease rigidity, the characteristics of the fold at rest and the material elasticity.

As one can expect the rigidity of the crease scales like the rigidity of the original material. But it also depends on the inverse of the crease length S_c , so the sharper the crease the stiffer it behaves. More surprisingly, the value of S_c itself depends slowly on the global size L of the fold. This underlines how crucial it is to precisely define the reference state of the system, especially in the case where the faces are small. The approximation $S_0 \ll L$ allows defining the crease rigidity in our model as it forces $L^* \ll L$. As a result, the moment due to the crease rigidity always bends the long elastic faces.

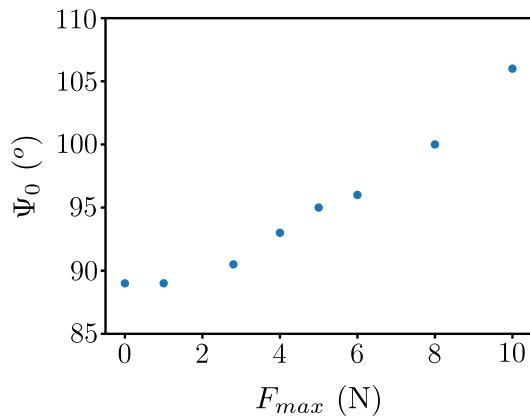


FIG. 8. Rest angle Ψ_0 as function of the maximal vertical force F_x reached while stretching the fold. We increase l until $F_x = F_{max}$ and lock it for one minute. Then, we release the sample and let it relax for one minute before taking a photo of the rest shape to recover Ψ_0 as done previously.

This elastic model does not provide a simple scheme to conceive a fold with rigid faces. The only way to soften the crease without changing neither S_0 nor the elasticity of the panels is to consider an elastic material with heterogeneous elasticity and a softer crease region. Since $B \propto h^3$ [28], a local reduction of the thickness of the original sheet gives the desired result. Another solution is to change the effective width of the crease by perforation [26]. However in both cases, the tempered region becomes plastic for lower stress. It limits the local moment that can be reached [30]. If this limit is low enough compared to the moment needed to bend the faces, they remain straight while the crease deforms, though not elas-

tically. Indeed, crossing the plasticity threshold changes the reference configuration of our samples as shown by the evolution of the rest angle Ψ_0 in Fig. 8. in high-stress situation.

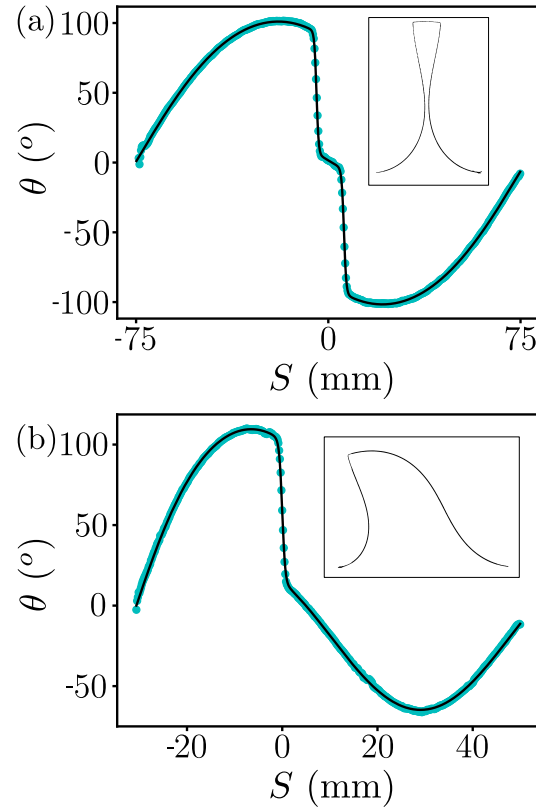


FIG. 9. Experimental (blue points) and numerical (black line) profile of (a) a compressed fold with two symmetric creases and (b) a compressed asymmetric fold with a single crease. Inset: Black and white images of the samples side.

This model for a symmetric fold with a single crease can easily be extended to more complex structures. In Fig. 9. the numerical solution of Eq. (9) is nicely adjusted to the deformed profile of both a fold with two creases and an asymmetric fold. The main difference comes from the expression of the rest shape θ_0 , but in the second case the condition $F_y \approx 0$ is no longer verified as the fold is no longer symmetrical.

Finally, we have shown that defining the reference configuration of the fold is crucial to understand its mechanical response. The machining of the fold induces residual stresses and defines an absolute rest configuration that can be treated as a non-Euclidian reference metric [33]. However, a fold under loading exhibits a different reference configuration which is the one that imposes the crease extension and not the absolute reference configuration. For complex origami structures where the crease network is interconnected, this underlines the importance of knowing the physical reference configuration by solving the problem in absence of external loading in order

to predict the mechanical response of the crease network and to determine correctly the relevant length scales of the problem. Indeed kinematic constraints and mechanical response of the panels, through either bending or stretching, means that the reference configuration of the origami *is not* the sum of the reference configurations of the creases taken independently. Much like with phase-field models for problems with sharp interfaces [35], we believe that the approach we propose is useful for numerical implementations of the mechanical behaviour of

complex origami or crumpled structures. Moreover, such a continuous approach would be also suitable to study the time-dependent properties of the crease.

V. ACKNOWLEDGMENT

This work was carried out in the framework of the METAMAT Project No. ANR-14-CE07-0031 funded by Agence Nationale pour la Recherche.

- [1] H. Kobayashi, B. Kresling, and J. F. V. Vincent, *Proceedings of the Royal Society B: Biological Sciences* **265**, 147 (1998).
- [2] G. Grabenweger, P. Kehrl, B. Schlick-Steiner, F. Steiner, M. Stolz, and S. Bacher, *Journal of Applied Entomology* **129**, 353 (2005).
- [3] E. Couturier, S. C. du Pont, and S. Douady, *PLoS ONE* **4**, e7968 (2009).
- [4] W. T. M. Forbes, *Psyche: A Journal of Entomology* **31**, 254 (1924).
- [5] J. H. Brackenbury, *Journal of Zoology* **232**, 253 (1994).
- [6] R. J. Wootton, R. C. Herbert, P. G. Young, and K. E. Evans, *Philosophical Transactions of the Royal Society B: Biological Sciences* **358**, 1577 (2003).
- [7] M. A. Dias, L. H. Dudte, L. Mahadevan, and C. D. Santangelo, *Physical Review Letters* **109** (2012), 10.1103/physrevlett.109.114301.
- [8] M. B. Amar and Y. Pomeau, *Proceedings of the Royal Society A: Mathematical, Physical and Engineering Sciences* **453**, 729 (1997).
- [9] O. Gottesman, J. Andrejevic, C. H. Rycroft, and S. M. Rubinstein, *arXiv:1807.00899* (2018).
- [10] Z. Y. Wei, Z. V. Guo, L. Dudte, H. Y. Liang, and L. Mahadevan, *Physical Review Letters* **110** (2013), 10.1103/physrevlett.110.215501.
- [11] A. Papa and S. Pellegrino, *Journal of Spacecraft and Rockets* **45**, 10 (2008).
- [12] J. L. Silverberg, A. A. Evans, L. McLeod, R. C. Hayward, T. Hull, C. D. Santangelo, and I. Cohen, *Science* **345**, 647 (2014).
- [13] H. Yasuda and J. Yang, *Physical Review Letters* **114** (2015), 10.1103/physrevlett.114.185502.
- [14] B. G. ge Chen, B. Liu, A. A. Evans, J. Paulose, I. Cohen, V. Vitelli, and C. Santangelo, *Physical Review Letters* **116** (2016), 10.1103/physrevlett.116.135501.
- [15] L. H. Dudte, E. Vouga, T. Tachi, and L. Mahadevan, *Nature Materials* **15**, 583 (2016).
- [16] J. T. Overvelde, T. A. de Jong, Y. Shevchenko, S. A. Becerra, G. M. Whitesides, J. C. Weaver, C. Hoberman, and K. Bertoldi, *Nature Communications* **7**, 10929 (2016).
- [17] M. A. Dias and B. Audoly, *Journal of the Mechanics and Physics of Solids* **62**, 57 (2014).
- [18] D. Han, X. Qi, C. Myhrvold, B. Wang, M. Dai, S. Jiang, M. Bates, Y. Liu, B. An, F. Zhang, H. Yan, and P. Yin, *Science* **358**, eaao2648 (2017).
- [19] M. Z. Miskin, K. J. Dorsey, B. Bircan, Y. Han, D. A. Muller, P. L. McEuen, and I. Cohen, *Proceedings of the National Academy of Sciences* **115**, 466 (2018).
- [20] K. Kuribayashi, K. Tsuchiya, Z. You, D. Tomus, M. Umamoto, T. Ito, and M. Sasaki, *Materials Science and Engineering: A* **419**, 131 (2006).
- [21] L. Mahadevan, *Science* **307**, 1740 (2005).
- [22] K. Miura, *The Institute of Space and Astronautical Science report* **618** (1985).
- [23] Huffman, *IEEE Transactions on Computers* **C-25**, 1010 (1976).
- [24] R. Chudoba, J. van der Woerd, M. Schmerl, and J. Hegger, *Advances in Engineering Software* **72**, 119 (2014).
- [25] M. G. Walker and K. A. Seffen, *Thin-Walled Structures* **124**, 538 (2018).
- [26] A. Reid, F. Lechenault, S. Rica, and M. Adda-Bedia, *Physical Review E* **95** (2017), 10.1103/physreve.95.013002.
- [27] V. Brunck, F. Lechenault, A. Reid, and M. Adda-Bedia, *Physical Review E* **93** (2016), 10.1103/physreve.93.033005.
- [28] B. Audoly and Y. Pomeau, *Elasticity and geometry: from hair curls to the non-linear response of shells* (Oxford University Press, 2010).
- [29] F. Lechenault, B. Thiria, and M. Adda-Bedia, *Physical Review Letters* **112** (2014), 10.1103/physrevlett.112.244301.
- [30] A. Benusioglio, V. Mansard, A.-L. Biance, and L. Bocquet, *Soft Matter* **8**, 3342 (2012).
- [31] B. Thiria and M. Adda-Bedia, *Physical Review Letters* **107** (2011), 10.1103/physrevlett.107.025506.
- [32] Y. Lahini, O. Gottesman, A. Amir, and S. M. Rubinstein, *Physical Review Letters* **118** (2017), 10.1103/physrevlett.118.085501.
- [33] E. Efrati, E. Sharon, and R. Kupferman, *Soft Matter* **9**, 8187 (2013).
- [34] A. Pocheau and B. Roman, *Physica D: Nonlinear Phenomena* **192**, 161 (2004).
- [35] A. Karma, D. A. Kessler, and H. Levine, *Physical Review Letters* **87** (2001), 10.1103/physrevlett.87.045501.

Appendix A: Derivation of the *Elastica*

The following deals with detailing the derivation of Eqs. (3,4). The Lagrangian $\mathcal{L}(\theta, \theta')$ defined in Eq. (2) includes the bending energy of the system for a given configuration $\theta(S)$ and the energy of the crease $U(\Psi)$. The distance between the clamps and their alignment are prescribed through the Lagrange multipliers F_x and F_y . The equilibrium shape is defined by the extremum of this functional $\mathcal{L}\{\theta(S)\}$ with respect to variations $\delta\theta(S)$ of the fold shape. This yields

$$\begin{aligned} \delta\mathcal{L}\{\theta(S)\} = & BW \left(\int_{-L}^{0^-} + \int_{0^+}^L \right) \theta' \delta\theta' \, dS + F_x \left(\int_{-L}^{0^-} + \int_{0^+}^L \right) \sin(\theta) \delta\theta \, dS \\ & - F_y \left(\int_{-L}^{0^-} + \int_{0^+}^L \right) \cos(\theta) \delta\theta \, dS + W \frac{dU}{d\Psi} (\delta\theta(0^+) - \delta\theta(0^-)) , \end{aligned} \quad (\text{A1})$$

where the identity $\delta\Psi = (\delta\theta(0^+) - \delta\theta(0^-))$ was used. Integrating by parts the bending energy term simplifies this equation into

$$\begin{aligned} \delta\mathcal{L} = & BW \left([\theta'(S)\delta\theta(S)]_{-L}^{0^-} + [\theta'(S)\delta\theta(S)]_{0^+}^L \right) - BW \left(\int_{-L}^{0^-} + \int_{0^+}^L \right) \theta'' \delta\theta \, dS \\ & + F_x \left(\int_{-L}^{0^-} + \int_{0^+}^L \right) \sin(\theta) \delta\theta \, dS - F_y \left(\int_{-L}^{0^-} + \int_{0^+}^L \right) \cos(\theta) \delta\theta \, dS + W \frac{dU}{d\Psi} (\delta\theta(0^+) - \delta\theta(0^-)) , \end{aligned} \quad (\text{A2})$$

$$\begin{aligned} = & \left(\int_{-L}^{0^-} + \int_{0^+}^L \right) (-BW\theta'' + F_x \sin(\theta) - F_y \cos(\theta)) \delta\theta(S) \, dS \\ & + BW \left([\theta'(S)\delta\theta(S)]_{-L}^{0^-} + [\theta'(S)\delta\theta(S)]_{0^+}^L \right) + W \frac{dU}{d\Psi} (\delta\theta(0^+) - \delta\theta(0^-)) , \end{aligned} \quad (\text{A3})$$

Imposing $\delta\mathcal{L}\{\theta(S)\} = 0$ turns to impose that both the integral and the boundary terms vanish. This yields identically Eqs. (3,4). Notice that the same minimisation procedure applies for the continuous crease case and yield Eqs. (9-11).