



HAL
open science

Recovery process in sponges: morphogeneses and cell sources

Andrey Lavrov, Fyodor Bolshakov, Ilya Borisenko, Veronika Frolova, Daria B Tokina, Alexander Ereskovsky

► **To cite this version:**

Andrey Lavrov, Fyodor Bolshakov, Ilya Borisenko, Veronika Frolova, Daria B Tokina, et al.. Recovery process in sponges: morphogeneses and cell sources. Omics approaches to identify and characterize Marine/Aquatic Invertebrate stem cells, Apr 2019, Peniche, Portugal. hal-02354447

HAL Id: hal-02354447

<https://hal.science/hal-02354447>

Submitted on 7 Nov 2019

HAL is a multi-disciplinary open access archive for the deposit and dissemination of scientific research documents, whether they are published or not. The documents may come from teaching and research institutions in France or abroad, or from public or private research centers.

L'archive ouverte pluridisciplinaire **HAL**, est destinée au dépôt et à la diffusion de documents scientifiques de niveau recherche, publiés ou non, émanant des établissements d'enseignement et de recherche français ou étrangers, des laboratoires publics ou privés.

Recovery process in sponges: morphogeneses and cell sources

Andrey Lavrov^{1,2}, Fyodor Bolshakov^{1,2}, Ilya Borisenko², Veronika Frolova³, Daria Tokina⁴, Alexander Ereskovsky^{2,4}

¹ Pertsov White Sea Biological Station, Biological faculty, Lomonosov Moscow State University, Moscow, Russia;

² Department of Embryology, Biological faculty, Saint-Petersburg State University, Saint-Petersburg, Russia;

³ Department of Embryology, Biological faculty, Lomonosov Moscow State University, Moscow, Russia;

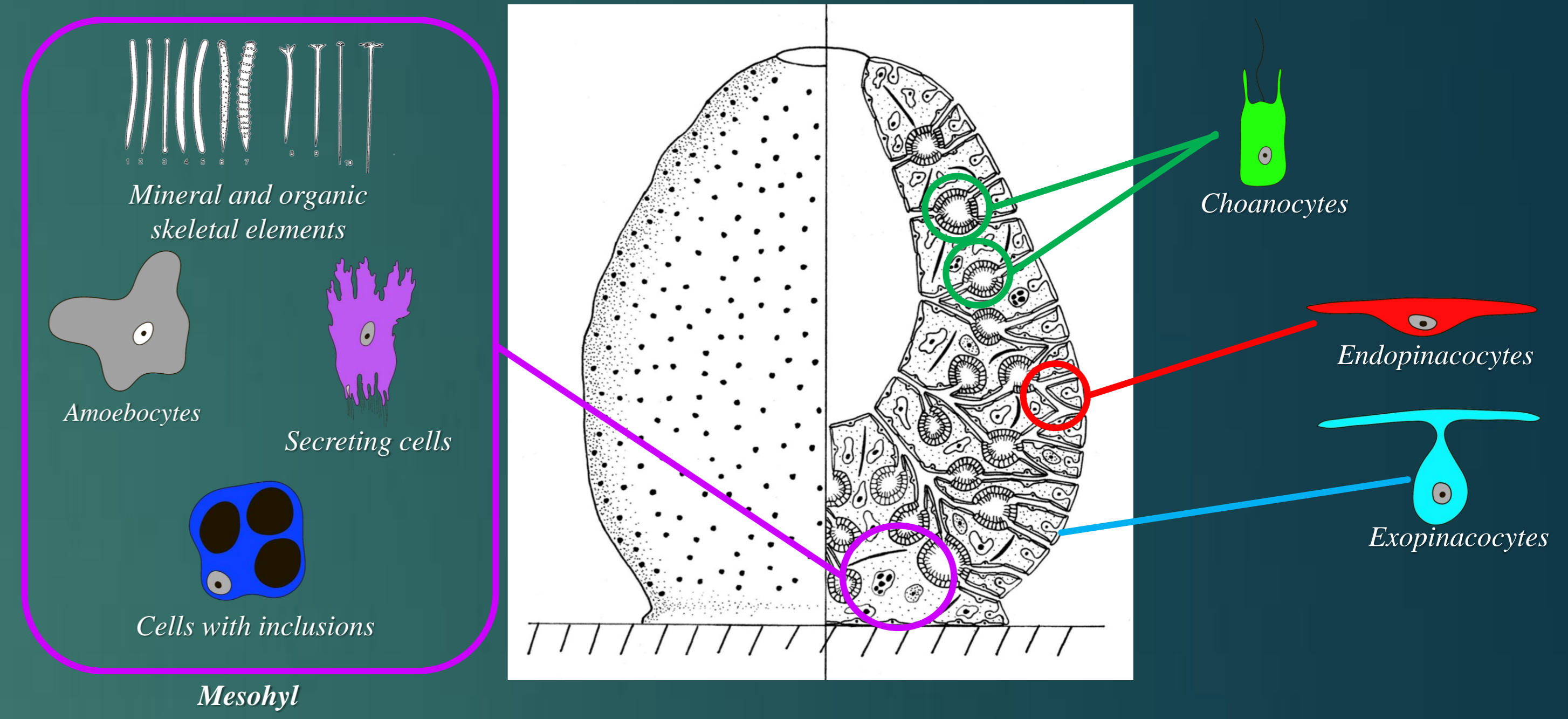
⁴ Institut Méditerranéen de Biodiversité et d'Ecologie marine et continentale (IMBE), Aix Marseille University, CNRS, IRD, Marseille, France



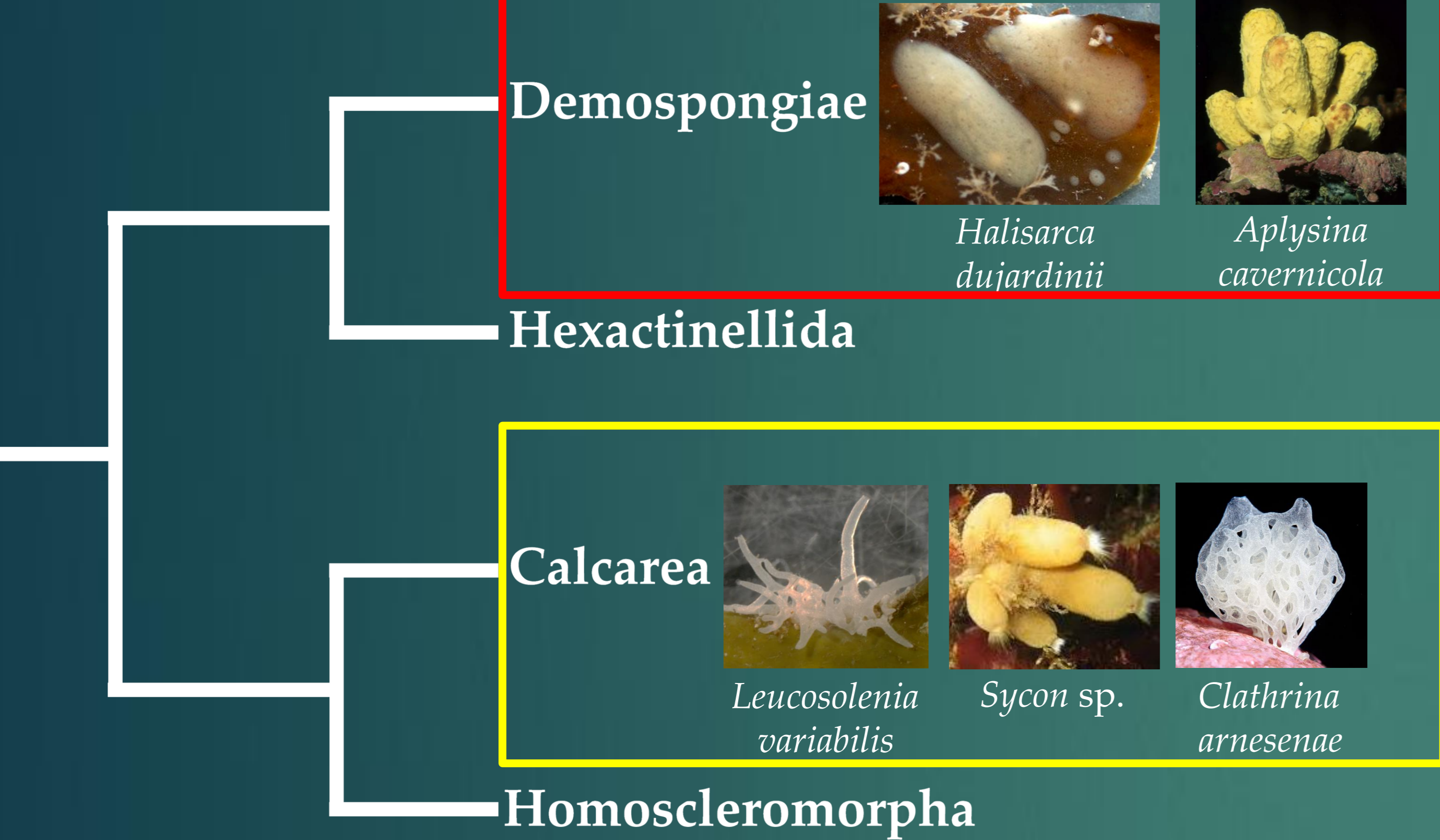
INTRODUCTION

Sponges (phylum Porifera) are one of the most ancient multicellular animals, which have the peculiar histological structure. They demonstrate a high plasticity and mobility of all tissues and cells in their body. One of the forms of manifestation of such plasticity is outstanding recovery abilities of sponges, ranging from wound healing to re-building of a functional body from dissociated cells. Sponges show a wide diversity of regeneration mechanisms and, thus, are exceptionally important for understanding the evolution of animal regeneration mechanisms. However, only a few reliable data on the mechanisms (morphogenesis, cell behavior, and regulation) of sponge regeneration and its distribution among sponge clades exists for now.

GENERAL ORGANIZATION OF SPONGE

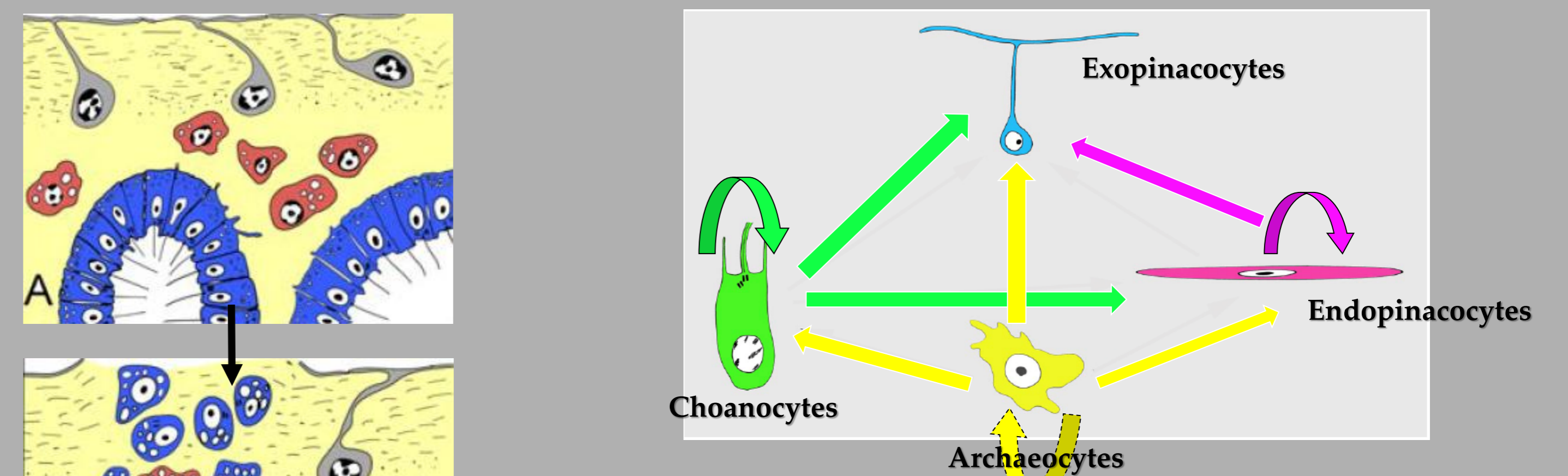


STUDIED SPECIES



REPARATIVE REGENERATION

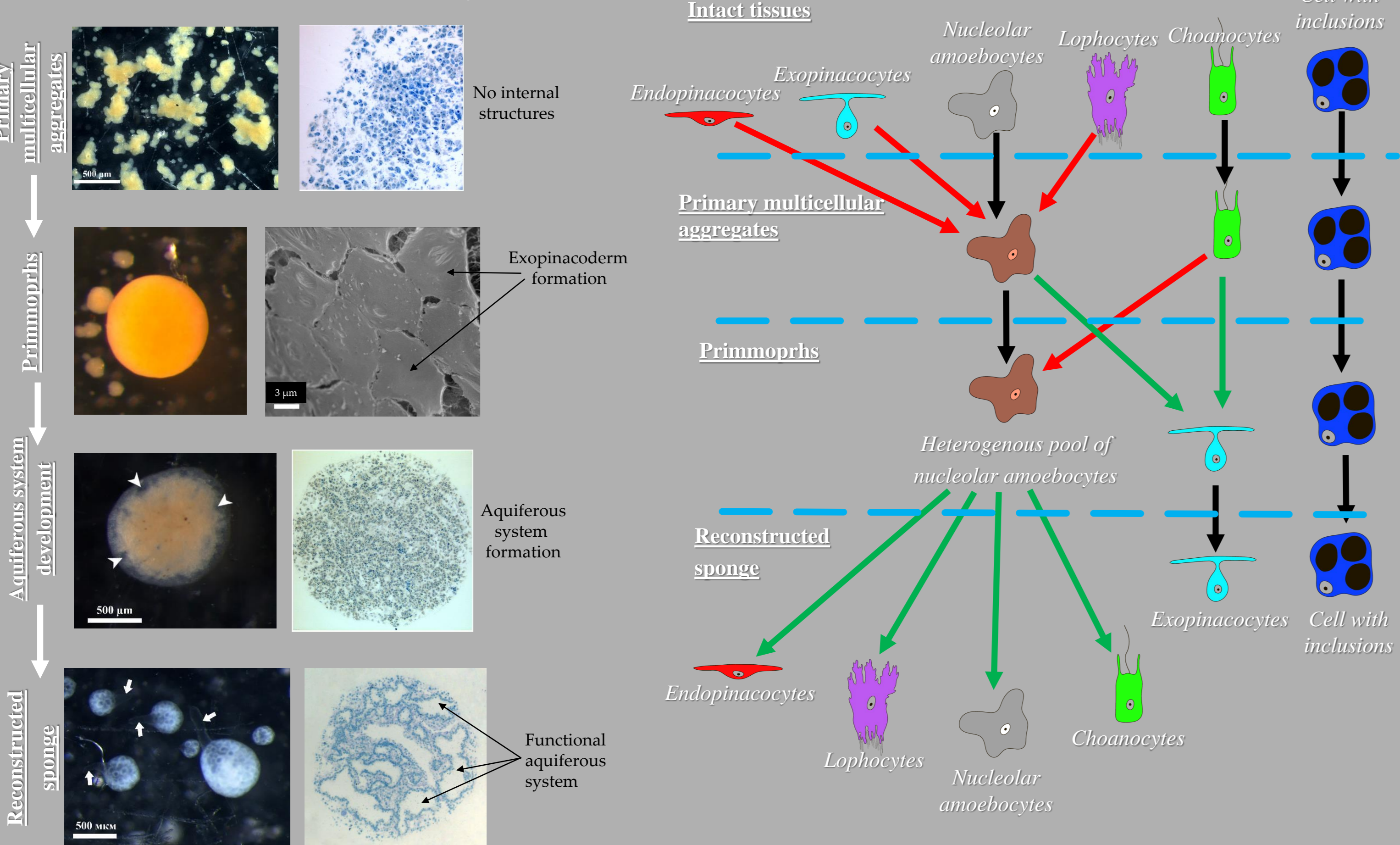
Demospongiae (*H. dujardinii*, *A. cavernicola*)



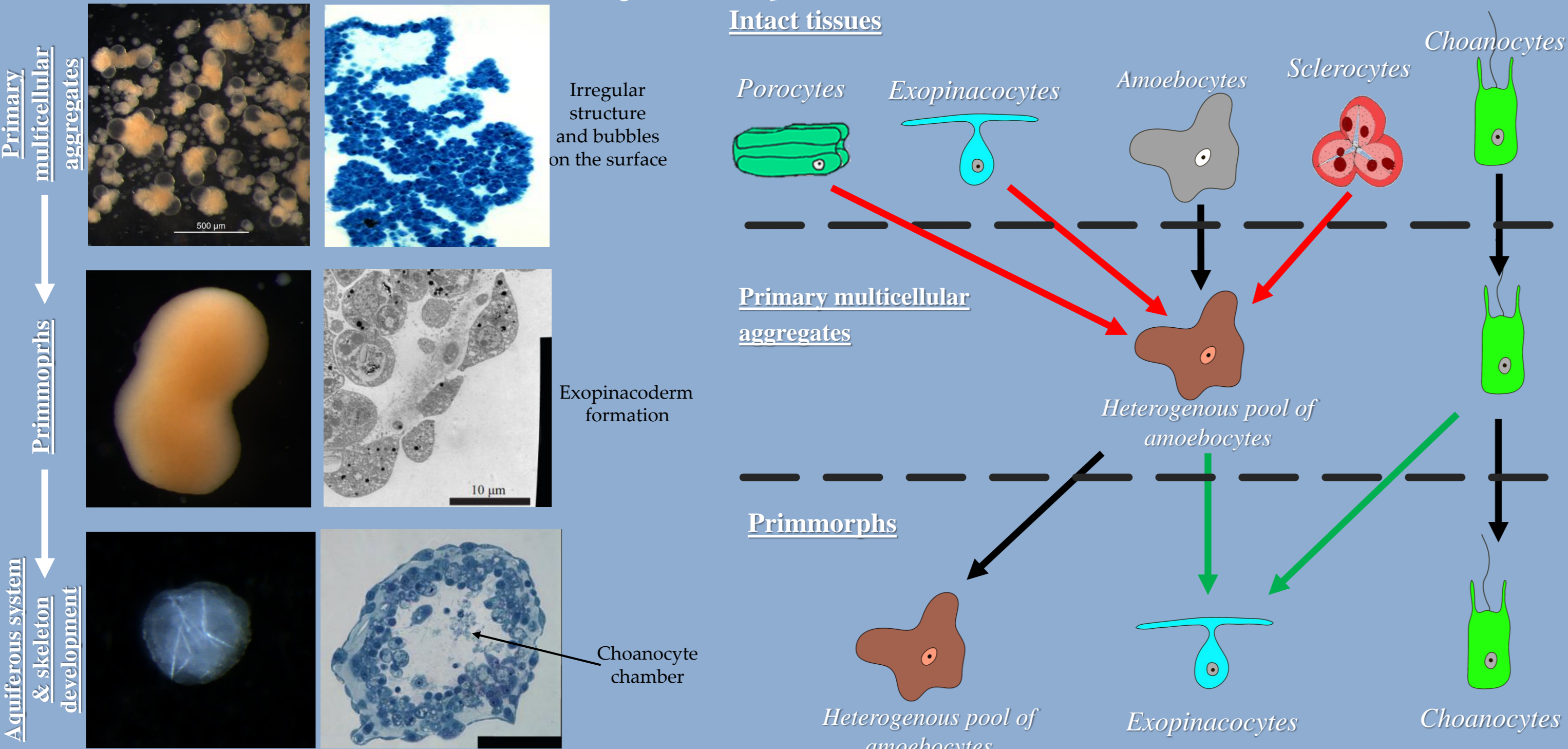
- 1) The main mechanism during regeneration in Demospongiae is a mesenchymal morphogenesis by mesenchymal-epithelial transformations.
- 2) This regeneration involves intervention of polypotent cells - archaeocytes and choanocytes - that migrate to the injured area where form a blastema with dedifferentiated cells.
- 3) The regeneration in *Halisarca* has epimorphosis features that require blastema formation, active cellular dedifferentiation and proliferation prior to the replacement of the lost body part.
- 4) There are three main sources of the new exopinacoderm during regeneration: choanocytes, archaeocytes and (rarely) endopinacocytes.

CELL REAGGREGATION

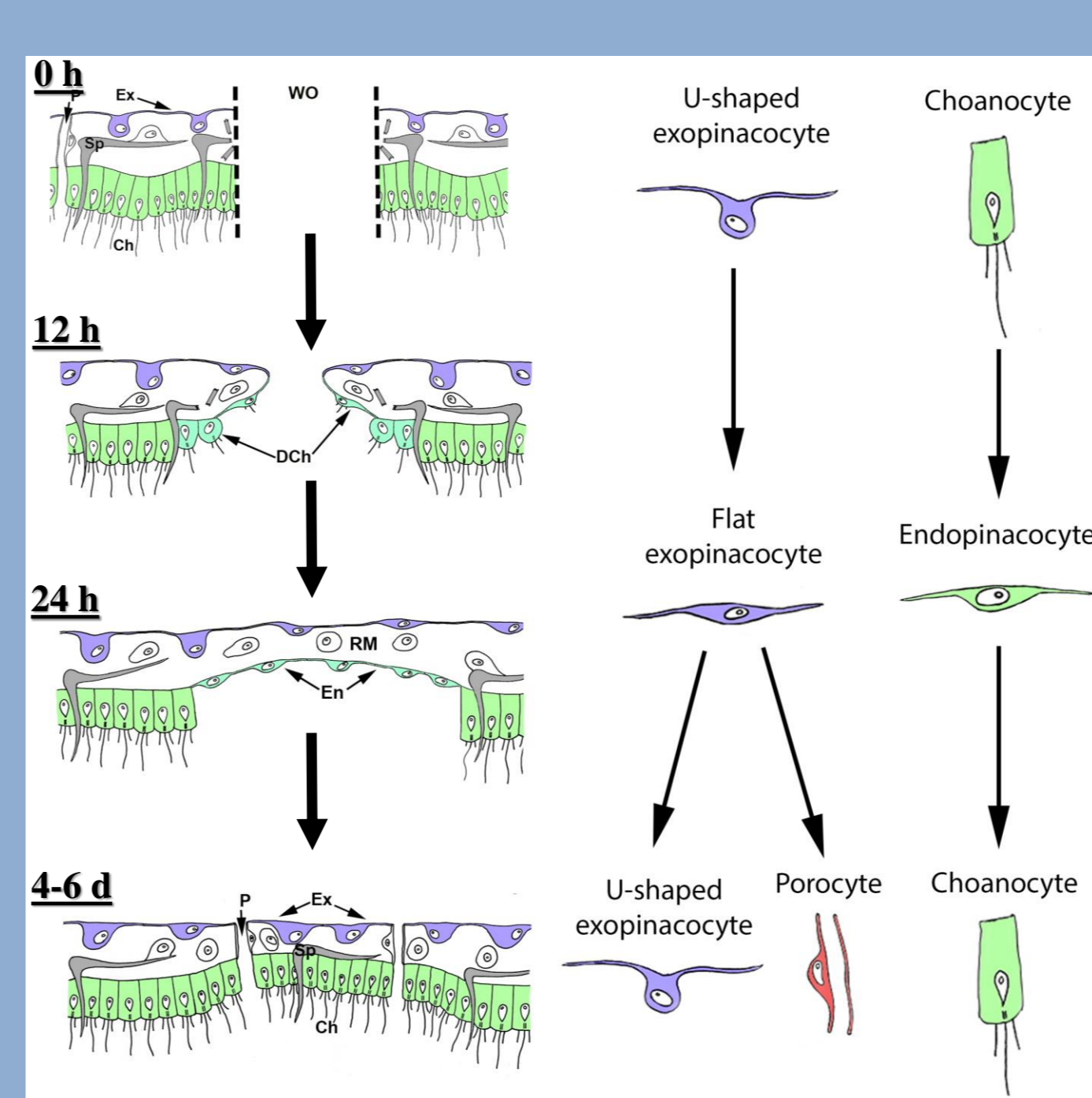
Demospongiae (*H. dujardinii*)



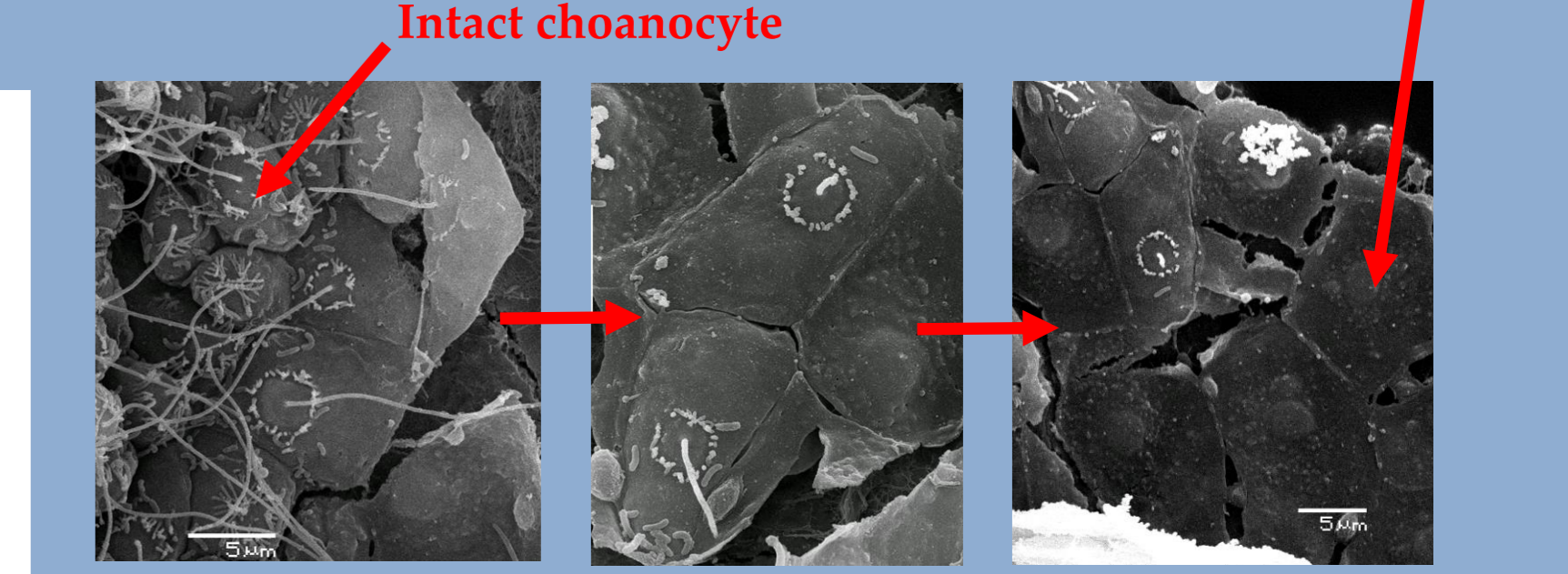
Calcarea (*L. variabilis*, *Sycon sp.*, *C. arnesenae*)



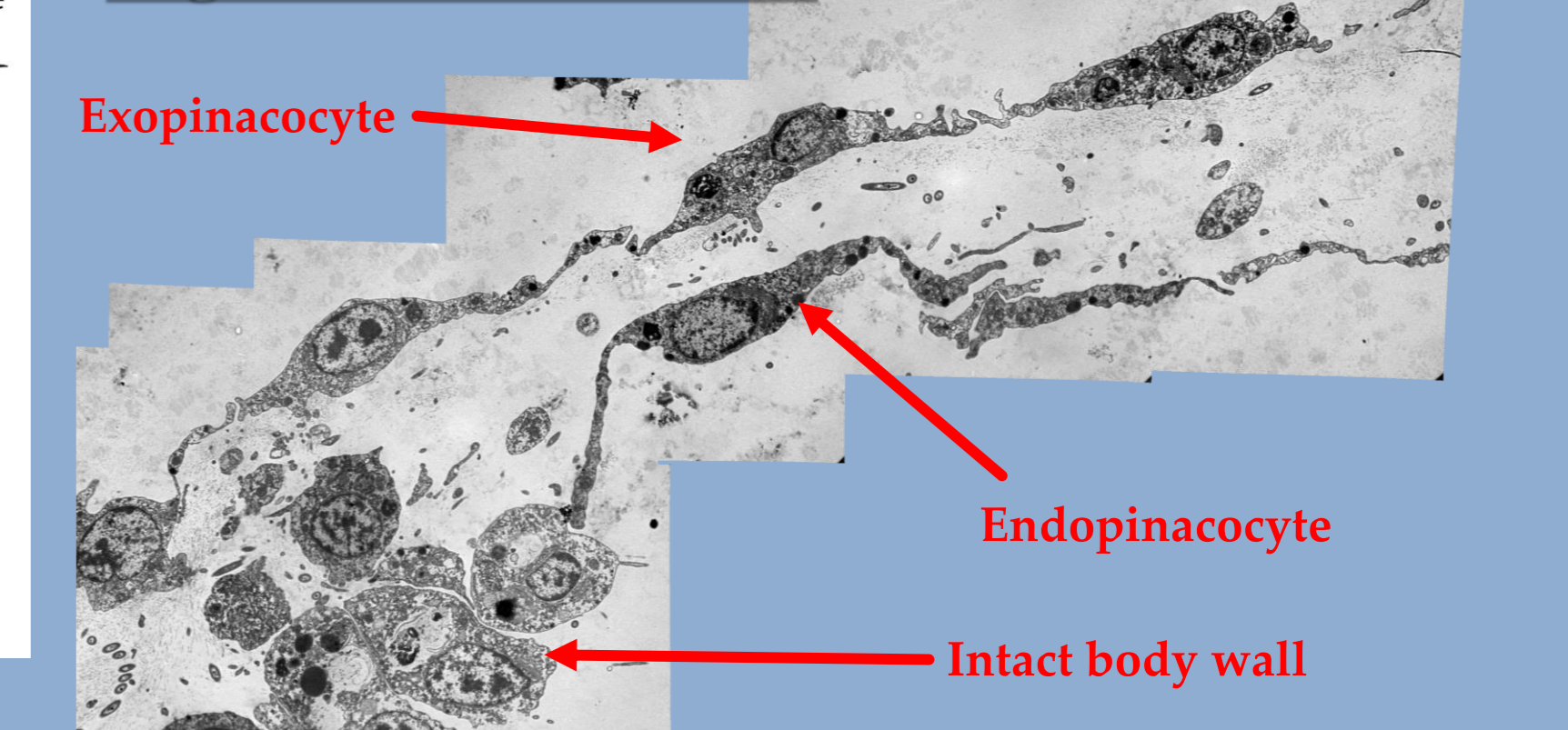
Calcarea (*L. variabilis*)



Choanocyte flattening



Regenerative membrane



The regeneration in *Leucosolenia* represents a rare example of the «true» morphallaxis. All processes occur solely through spreading and fusion of the epithelia surrounding the wound, accompanied by the transdifferentiation of the choanocytes and exopinacocytes. There are no changes in activity and distribution pattern in the proliferating cells, in both tissues, adjacent and distant from the wound. There are also no blastema nor any elements of mesenchymal-epithelial transitions. The transdifferentiation capacity of choanocytes and their involvement in regeneration supports the hypothesis that these cells combine features of somatic and stem cells.

CONCLUSION

During recovery processes, sponges utilize diverse and complex morphogenetic mechanisms, with a particular importance of cell transdifferentiation. While all sponges demonstrate high recovery abilities, the morphogeneses and cell sources for the recovery of lost structures varies in different clades.

Financial support: Russian Science Foundation, no. 17-14-01089; Russian Foundation for Basic Research nos. 19-04-00545, 19-04-00563