



HAL
open science

Influence of the Base Element on the Thermal Properties of Non- Ferrous Chromium-Rich TaC-Containing Alloys Elaborated by Conventional Casting: Part 3: Surface and Cross-Sectional Metallographic Characterization of the Oxidized Alloys

Jean-Paul K Gomis, Patrice Berthod, Erwann Etienne

► To cite this version:

Jean-Paul K Gomis, Patrice Berthod, Erwann Etienne. Influence of the Base Element on the Thermal Properties of Non- Ferrous Chromium-Rich TaC-Containing Alloys Elaborated by Conventional Casting: Part 3: Surface and Cross-Sectional Metallographic Characterization of the Oxidized Alloys. *Journal of Material Science and Technology Research*, 2019, 6, pp.73 - 83. 10.31875/2410-4701.2019.06.9 . hal-02353395

HAL Id: hal-02353395

<https://hal.science/hal-02353395>

Submitted on 7 Nov 2019

HAL is a multi-disciplinary open access archive for the deposit and dissemination of scientific research documents, whether they are published or not. The documents may come from teaching and research institutions in France or abroad, or from public or private research centers.

L'archive ouverte pluridisciplinaire **HAL**, est destinée au dépôt et à la diffusion de documents scientifiques de niveau recherche, publiés ou non, émanant des établissements d'enseignement et de recherche français ou étrangers, des laboratoires publics ou privés.

Influence of the Base Element on the Thermal Properties of Non-Ferrous Chromium-Rich TaC-Containing Alloys Elaborated by Conventional Casting: Part 3: Surface and Cross-Sectional Metallographic Characterization of the Oxidized Alloys

Jean-Paul K. Gomis¹, Patrice Berthod^{2,*} and Erwann Etienne²

¹Faculty of Science and Technologies, Campus Victor Grignard, Rue du Jardin Botanique, BP 70239 54500 Vandoeuvre-lès-Nancy, France

²Institut Jean Lamour (UMR 7198), University of Lorraine, Campus ARTEM, 2 allée André Guinier, BP 50840, 54000 Nancy, France

Abstract: The six alloys the thermal properties of which and the tendency to oxide spallation of which were studied in the first two parts of this work, were here characterized after oxidation for 70 hours at 1250°C. The external chromia scale, and also the CrTaO₄ subsurface oxide, formed for all the alloys, almost independently of the Co and Ni proportions in the base element content. But, because of the formation of more CrTaO₄ for the nickel-richest alloys probably due to the higher availability of Ta in the matrix and its easier diffusion towards the neighbourhood of the oxidation front, the adherence of chromia was weakened and spallation, suggested by the thermogravimetric curves in the second part of this work, is here really observed and the denuded part of alloys clearly seen. The degradation of the subsurface, which can be in a first time summarized by the development of a carbide-free zone and a {Cr, Ta}-depleted zone, depends on the Co and Ni proportions. The microstructure of the bulk is differently affected by long exposure at elevated temperature. The changes in carbide population characteristics are stronger for the nickel-based alloys than for the cobalt-based ones. Finally, the isothermal oxidation behaviour is best for the nickel-richest alloys but the oxide spallation behaviour and the potential mechanical properties are the best for the cobalt-richest alloys.

Keywords: Cast alloys for high temperature, nickel and cobalt, tantalum carbides, oxide surface characterization, subsurface deterioration characterization.

INTRODUCTION

The conventionally equi-axed cast superalloys' family exists since many decades [1, 2] and but is today still relevant [3]. Among the oldest ones the chromium-rich nickel-based alloys and cobalt-based ones are the most important. For the same bases new metallurgical systems have replaced the old principles of strengthening by chromium carbides, as equi-axed alloys reinforced by a mix of carbides including tantalum carbides (TaC) [4,5] or TaC-reinforced directionally solidified versions [6, 7]. When chromium carbides rather rapidly change in morphology and volume fraction during exposure at very high temperatures (higher than 1000°C) TaC carbides remains more stable although they may suffer themselves degradation near 1200°C [8]. Tantalum (and also carbon) being rather easy to oxidize at high temperature [9, 10], TaC (and other MC carbides) were under interest for hot oxidation studies to investigate their specific behaviour [11-13].

The alloys subject of the present study all contain close to 6 wt.%Ta and are more or less rich in tantalum

carbides. The presence of these highly oxidable carbides, furthermore mainly in the grain boundaries and in the interdendritic spaces which are fast chromium diffusion ways in situation of oxidation at high temperature, certainly influence strongly the behaviour of these alloys, regardless to the base element (nickel and/or cobalt). So, after a first part [14] devoted to the thermal properties of a series of six chromium-rich TaC-rich cast alloys with varying proportions in Ni and Co, and second part [15] in which a first aspect of high temperature oxidation behaviour (phenomena at heating and cooling), this is here the isothermal oxidation behaviour which will be here investigated, exclusively by metallographic characterization. Knowing that cobalt alloys are generally less hot corrosion resistant than nickel alloys for similar compositions for the other elements, the question to answer is how the presence of Ta in high content and the form with which it is present may influence this hierarchy.

MATERIALS AND METHODS

Reminders on the Studied Alloys

The six alloys, the common base of which is 25wt.%Cr, 0.4wt.%C and 6wt.%Ta, are different from

Address correspondence to this article at the Institut Jean Lamour (UMR 7198), University of Lorraine, Campus ARTEM, 2 allée André Guinier, BP 50840, 54000 Nancy, France; Tel: (+33) 3 72 74 27 29; E-mail: patrice.berthod@univ-lorraine.fr

one another concerning the nature and the contents in base element: from a Ni-based Co-free initial version (Ni(bal.)-25Cr-0.4C-6Ta, named "0Co5NiTa"), about 14 wt.%Co was added several times at the expense of nickel, until achieving a total replacement (Co(bal.)-25Cr-0.4C-6Ta, named "5Co0NiTa"). These six alloys were elaborated from pure elements by foundry way (high frequency induction melting, cooling in a cooled copper crucible, under argon atmosphere), this leading to 6 ingots all weighing about 40 grams. The obtained as-cast microstructures, specified in the first part [14] of this work, are all dendritic and contain carbides, exclusively located in the grain boundaries and interdendritic spaces. These carbides are either chromium carbides and tantalum carbides (case of the Ni-richest alloys), or tantalum carbides only (case of the Co-richest ones). Their morphologies suggest that chromium carbides and tantalum carbides are separately part of two eutectic compounds, both with matrix as second phase.

Tests in Oxidation at High Temperature

Ingots' cutting and surface grinding of the obtained parts of alloys led to thermogravimetry samples which were all subjected to a thermal cycle composed of a heating at +20°C/min, a 70 hours isothermal stage at 1250°C and a cooling at -5°C/min. The atmosphere was a flowing synthetic air composed of 80%O₂ and 20%N₂. At the end of the experiment the oxidized samples were first subjected to a surface analysis (naked eye observation with assessment of the oxide scale spallation, and X-ray spectrometry). These results were previously presented in the second part of this work [15].

Electron Microscopy Observation and Characterization of the Oxidized Surfaces

The characterization of the surface of the six oxidized samples prior to cross sectional preparation was continued in the present part of the work, by examining these oxidized surfaces using a Scanning Electron Microscope (SEM, JEOL JSM-6010LA) and its attached Energy Dispersion Spectrometer (EDS). The necessity of having an extreme surface electrically conductive led to apply thin metallic deposit. This was done by cathodic pulverisation of gold. The surfaces and the oxides covering them were thereafter observed with the SEM in Secondary Electrons (SE) mode to have a rather deep zone of neatness. EDS was attempted in zone and particles presenting a local sufficient flat surface, in order to identify the elements

which were the most present, after deduction of the gold contribution, and then the types of oxides present. This also allowed estimating the chemical compositions of the alloys in extreme surface where oxide spallation denuded them. Per sample a area was also chosen to be subjected to X-ray mapping to have a global look of the oxides distributions and morphologies.

Cross Sectional Characterization of the External Oxides and of the Deteriorated Sub-Surfaces

The samples were thereafter embedded, then cut. Grinding (using SiC papers from #240 to #1200) and polishing (textile disk with 1µm hard particles) led to mirror-like samples authorizing cross sectional characterization. SEM observations in Back Scattered Electrons mode (BSE), spot EDS analyses and EDS concentration profiles were carried out to clearer identify what were the oxides remained on surface, to characterize the degradation state of the subsurface and the local microstructure and chemical consequences of oxidation. A look was also taken at the microstructure in the bulk, to know how it evolved during the exposure at high temperature.

RESULTS AND DISCUSSION

Surface States Observed with the SEM in SE Mode before Cross Sections Preparation

The oxidation states of the surfaces of the samples subjected to 70h in synthetic at 1250°C are illustrated by SEM/SE micrographs, in Figure 1 for the two nickel-richest alloys (left: 0Co5NiTa, bottom: 1Co4NiTa, top: ×250, bottom: ×1000), Figure 2 for the two intermediate alloys 2Co3NiTa (left) and 3Co2NiTa (right) and Figure 3 for the two cobalt-richest alloys 4Co1NiTa (left) and 5Co0NiTa (right). One can see that the main oxide to be seen on surface is the complex CrTaO₄ one for the 0Co5NiTa and 1Co4NiTa alloys the surface of which is denuded elsewhere. In the ×1000 micrograph of the 0CoNiTa one clearly distinguish the cups-shape of the denuded alloy as well as double and triple interdendritic boundaries. Chromia (Cr₂O₃) starts to be visible on the micrographs of the two intermediate alloys, together with CrTaO₄ and the spinel oxide (Ni,Co)Cr₂O₄ or CoCr₂O₄. In addition to the formers (Ni,Co)O or CoO can be observed additionally on the surfaces of the two cobalt-richest alloys 4Co1NiTa and 5Co0NiTa. A X-map is also presented, in Figure 4. One can see a chromia area and a denuded alloy area.

The observations made about the oxidized surface states of the six alloys, prior to the cross-sectional

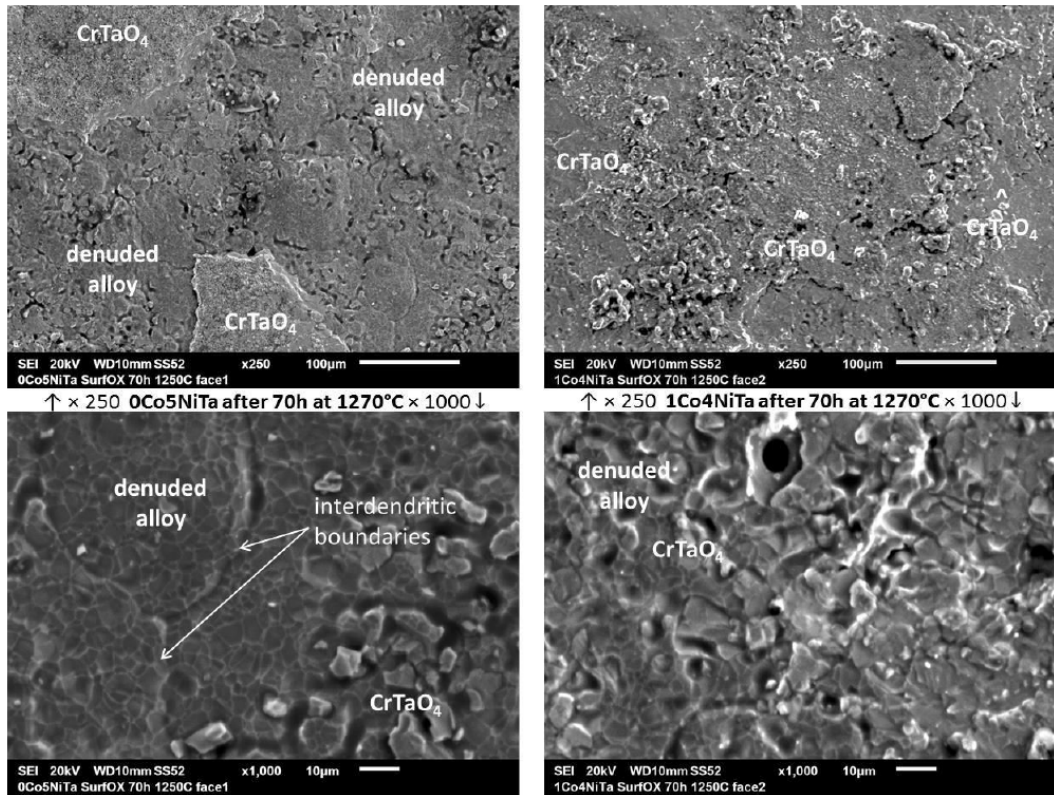


Figure 1: Surface states of the oxidized 0Co5NiTa (left) and 1Co4NiTa (right) alloys at two magnifications: general view at $\times 250$ (top) and detailed view at $\times 1000$ (bottom).

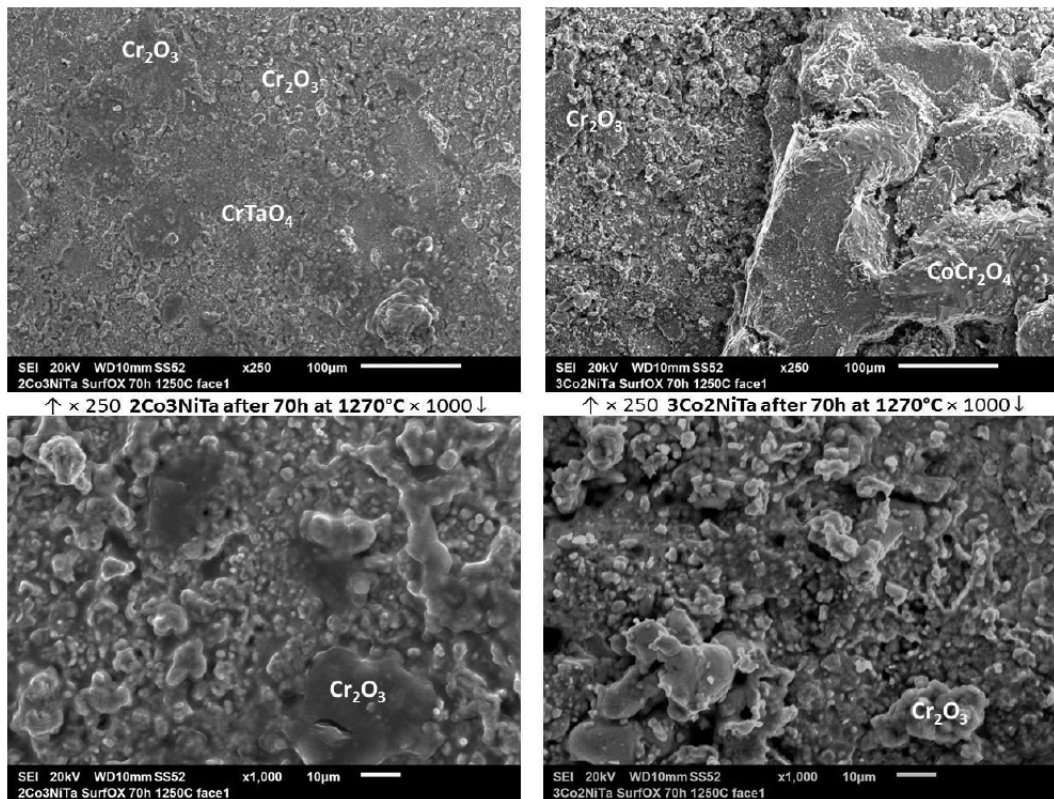


Figure 2: Surface states of the oxidized 2Co3NiTa (left) and 3Co2NiTa (right) alloys at two magnifications: general view at $\times 250$ (top) and detailed view at $\times 1000$ (bottom).

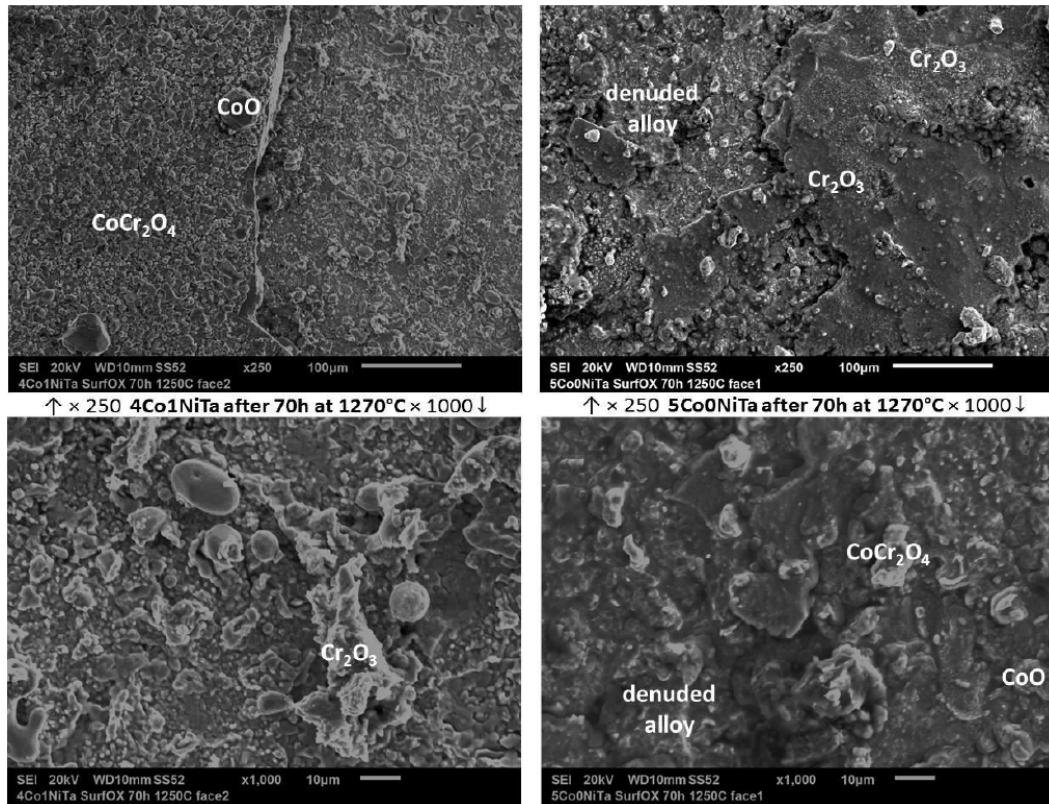


Figure 3: Surface states of the oxidized 4Co1NiTa (left) and 5Co0NiTa (right) alloys at two magnifications: general view at $\times 250$ (top) and detailed view at $\times 1000$ (bottom).

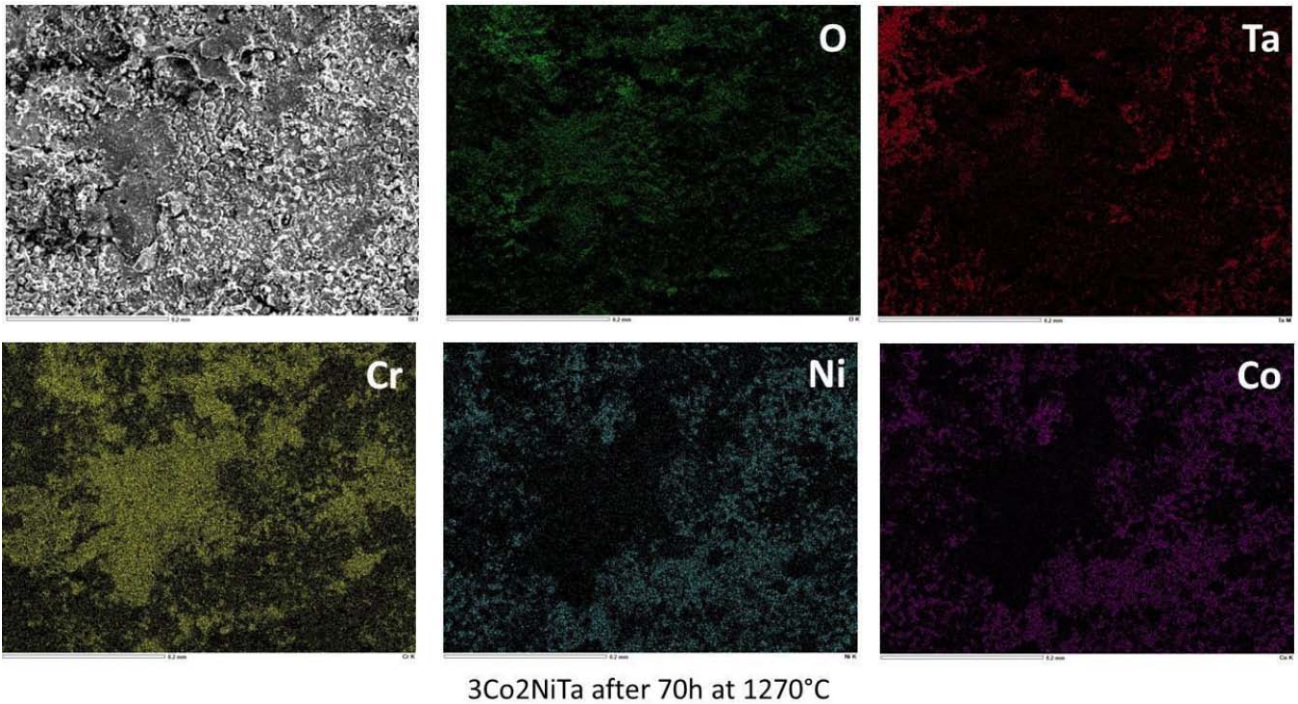


Figure 4: X-map of an area of the oxidized surface of one of the alloys (here: 3Co2NiTa).

characterization can be summarized by the content of Table 1. The complex oxide CrTaO_4 obviously formed on the surface or very close to the surface in all cases.

Chromia (Cr_2O_3) was observed on the surface of all alloys but was often absent on the 0Co5NiTa alloy. NiO was seen on the oxidized surface of the same

Table 1: Inventory of the Oxides Seen with the SEM in SE Mode and Identified by EDS on the Surfaces of the Oxidized Samples Before Cutting for Obtaining Cross Sections; Content Ranges in Cr and Ta on the Denuded Alloy Parts of Surface

| Alloy Areas | 0Co5NiTa | 1Co4NiTa | 2Co3NiTa | 3Co2NiTa | 4Co1NiTa | 5Co0NiTa |
|---------------------------------------|----------------------------|------------------------------|----------------------------|-------------------|-------------------------------------|----------------------------------|
| (Co,Ni)O | NiO | / | / | / | X, CoO | CoO |
| (Co,Ni)Cr ₂ O ₄ | / | / | X | X | X, CoCr ₂ O ₄ | CoCr ₂ O ₄ |
| Cr ₂ O ₃ | / | X | X | X | X | X |
| CrTaO ₄ | X | X | X | X | X | X |
| Denuded alloy | X | X | X | X | X | X |
| (wt.%Cr and wt.%Ta) | (17.5-21.5 Cr, 0 – 0.9 Ta) | (17.3-18.4 Cr, 1.3 – 2.0 Ta) | (17.2-19.2 Cr, 0 – 1.8 Ta) | (12.1 Cr, 0.0 Ta) | (15.0-15.8 Cr, 0.0 – 1.3 Ta) | (10.0-20.0 Cr, 0.0 – 0.6 Ta) |

0Co5NiTa alloy while (Co, Ni)O or CoO, as well as the spinel (Co,Ni)Cr₂O₄ or CoCr₂O₄, were present on the oxidized 4Co1NiTa alloy, and only CoO on the 5Co0NiTa one. It seems thus that the MO oxides only formed on the Ni-richest alloy (NiO seen here for 0Co5NiTa but not according to XRD [15]) and on the two Co-richest alloys (consistent with the XRD results [15]). (Co,Ni)O and CoO reacted with chromia to form the corresponding spinel oxide on the two Co-richest alloys.

Surface States Observed with the SEM in BSE Mode on Cross Sections

The ×1000 SEM/BSE micrographs presented in Figure 5 (for the three nickel-richest alloys) and in

Figure 6 (the three cobalt-richest alloys) show the oxides found on surface and in the subsurface very

close to the oxide scale/alloy interface. One can see that all oxides except the complex oxide of chromium and tantalum formed outside, while the later (CrTaO₄) is present in high quantities close to the interface.

Enlarged views are given in Figure 7 (the three Ni-richest alloys) and Figure 8 (the three Co-richest alloys). They show that CrTaO₄ is everywhere along the surface concentrated in the extreme subsurface of the alloys, this allowing its detection by both XRD [15] and SEM/EDS (here). These enlarged micrographs also illustrate that the external oxide scale, mainly made of chromia, generally remained more on the

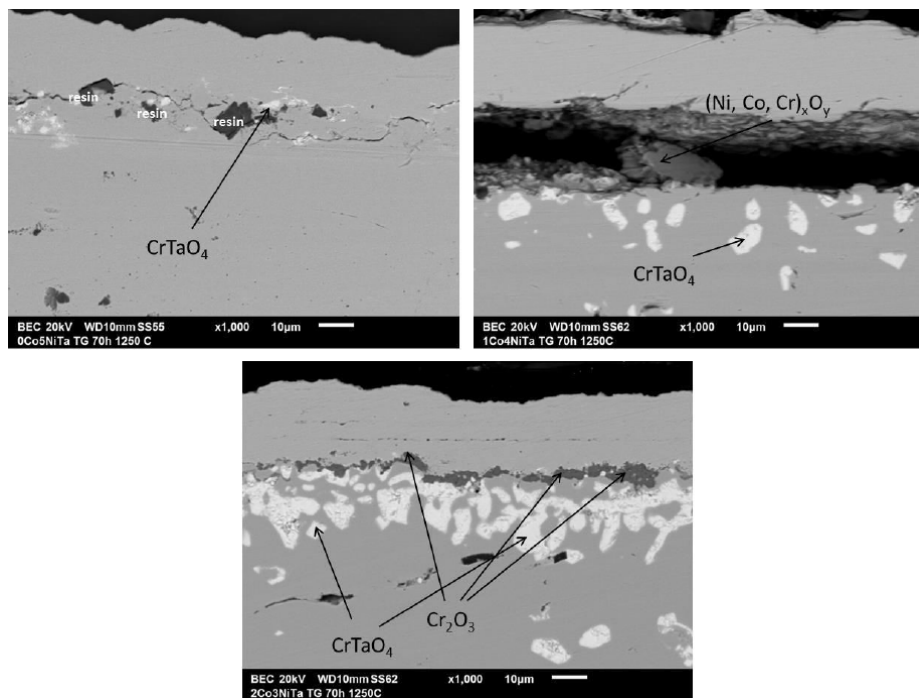


Figure 5: Surface states of the 0Co5NiTa (top, left), 1Co4NiTa (top, right) and 2Co3NiTa (bottom) alloys after 70h at 1250°C in air (SEM/BSE, magnification ×1000).

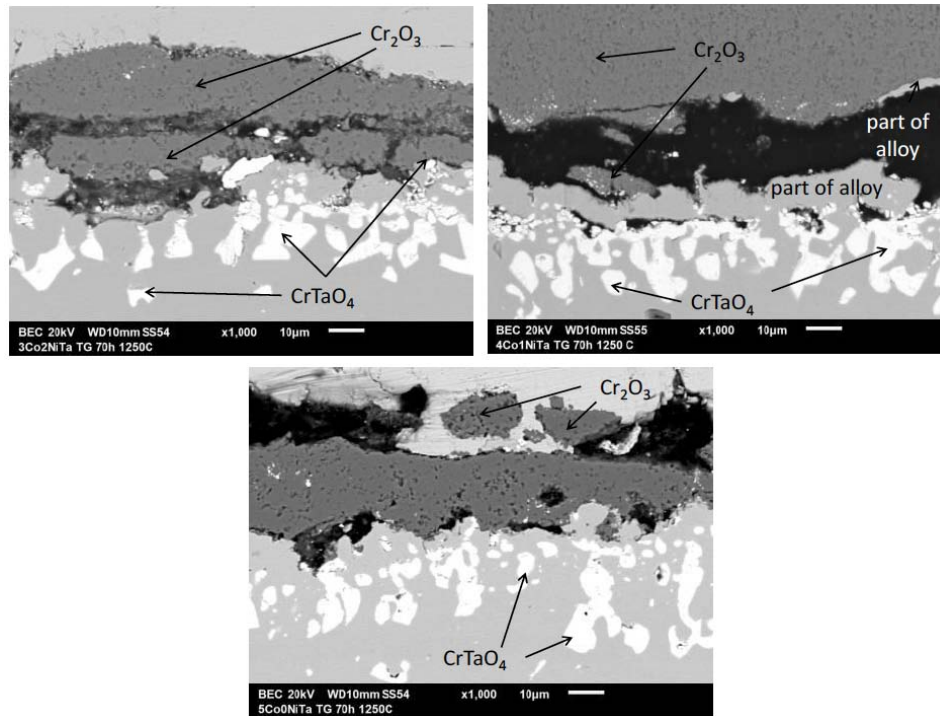


Figure 6: Surface states of the 3Co2NiTa (top, left), 4Co1NiTa (top, right) and 5Co0NiTa (bottom) alloys after 70h at 1250°C in air (SEM/BSE, magnification $\times 1000$).

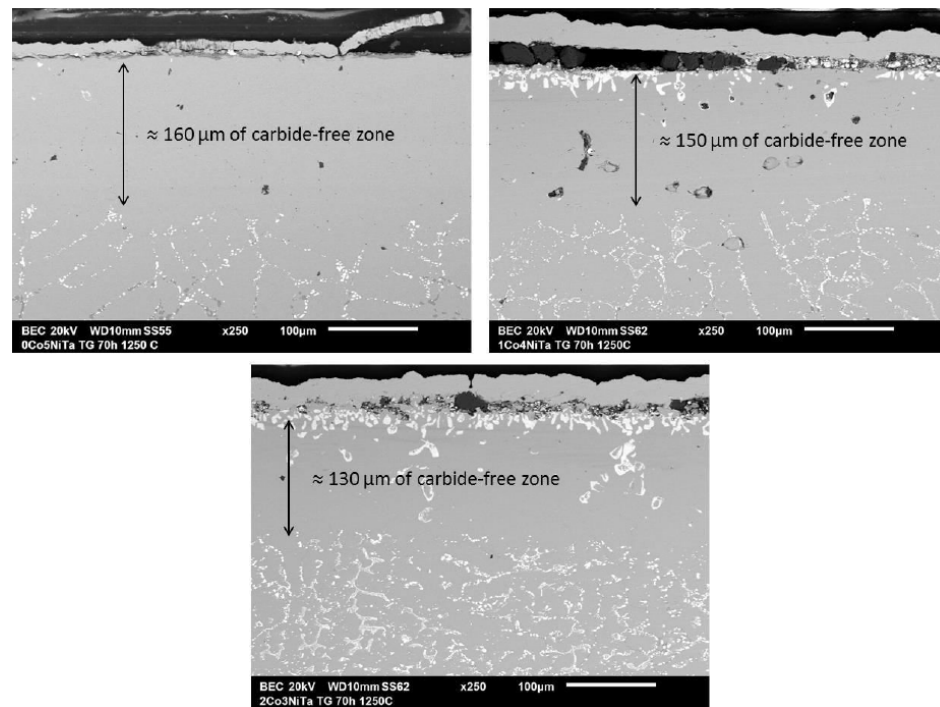


Figure 7: Sub-surface states of the 0Co5NiTa (top, left), 1Co4NiTa (top, right) and 2Co3NiTa (bottom) alloys after 70h at 1250°C in air (SEM/BSE, magnification $\times 250$).

cobalt-richest alloys than on the nickel-richest ones. One these same enlarged micrographs one can also observe that the carbides disappeared over a significant depth in the subsurface of all alloys; seemingly more extended for the Ni-richest alloys

(average about 160, 150 and 130 μm for the 0Co5NiTa, 1Co4NiTa and 2Co3NiTa alloys respectively) than for the Co-richest ones (125, 115 and 110 μm for the 3Co2NiTa, 4Co1NiTa and 5Co0NiTa alloys).

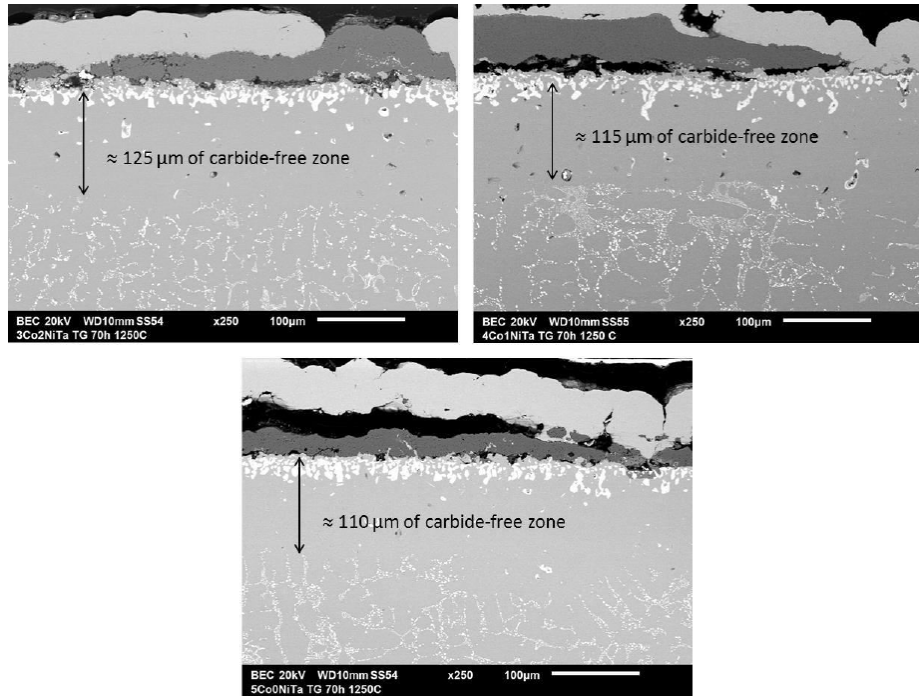


Figure 8: Sub-surface states of the 3Co₂NiTa (top, left), 4Co₁NiTa (top, right) and 5Co₀NiTa (bottom) alloys after 70h at 1250°C in air (SEM/BSE, magnification ×250).

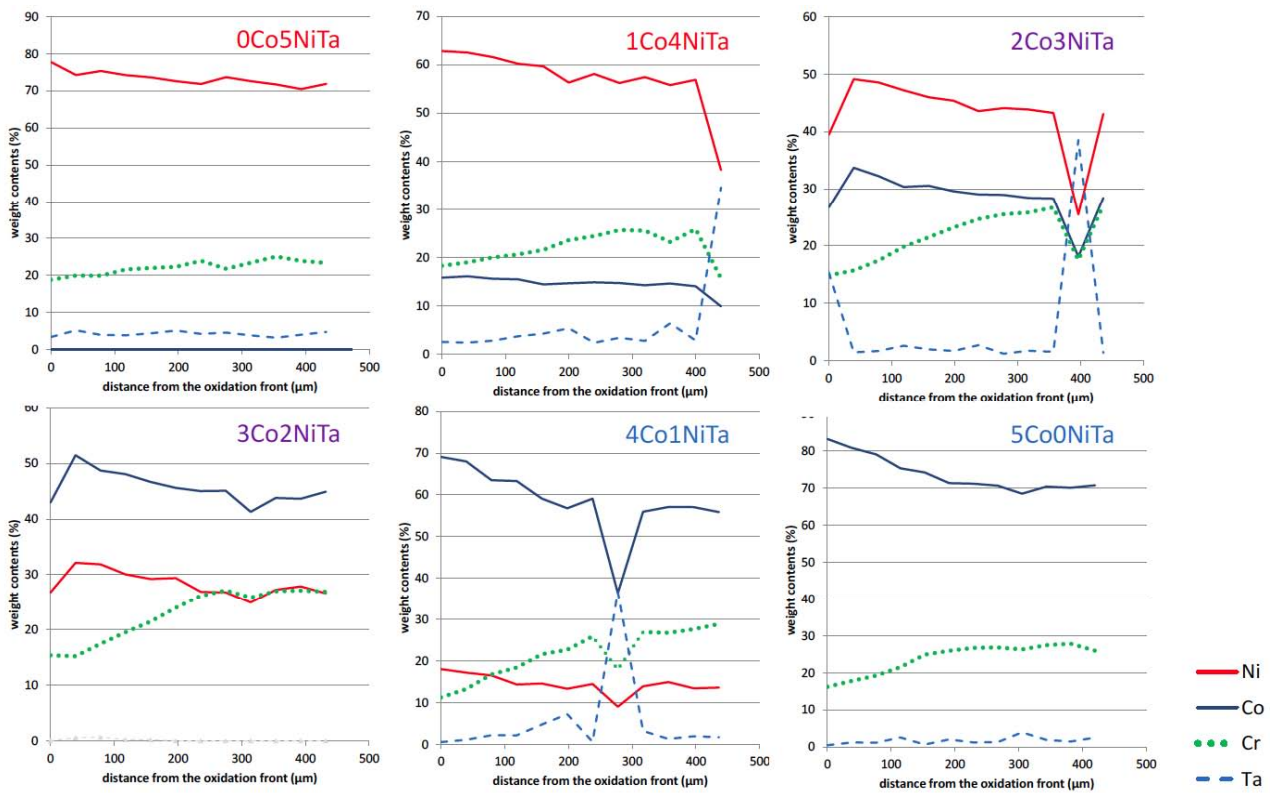


Figure 9: Concentration profiles of all elements, and notably of Cr and Ta, from the oxide scale / alloy interface and perpendicularly to this interface.

Some concentrations profiles were measured and the results plotted in Figure 9. One can see that zones depleted in Cr and in Ta developed from the oxide

scale/alloy interface in each case. The Cr depleted depth and the Cr and Ta contents on extreme surface (in alloy, close to the scale/alloy interface) both

decrease when there is more and more cobalt replacing nickel as base element in the alloy. At the same time the chromium concentration gradient increases.

This suggests a more and more difficult diffusion of Cr towards the oxidation front, which is a well-known phenomenon: Cr diffuses faster in a Ni-based matrix than in a Co-based one. Obviously this seems to be possibly also true for tantalum. Because of the Co-induced difficulty of diffusion chromium may encounter some problem to correctly feed the oxidation front in chromia-former element, with as probable consequence the more or less late loss of the chromia-forming behaviour which allows alloys resisting oxidation and corrosion. In contrast, due to the similar Co-induced difficulty of diffusion tantalum remains at a rather high level in matrix close to the oxidation front which limits the tendency of tantalum carbides to dissolve under the remote effect of oxidation. One can also imagine that an effect of this difference in Ta diffusion, and thus in CrTaO_4 formation in the extreme surface of alloy, may influence the adherence of the external scale of oxides: not so unfavourable for the Co-richest alloys than for the Ni-richest alloys the external scale spalled off more.

Microstructure Evolutions in the Bulk

The bulk microstructures of all alloys after the oxidation tests were also examined. The new microstructure states are illustrated by SEM/BSE micrographs in Figure 10 for the two Ni-richest alloys, Figure 11 for the two intermediate alloys and Figure 12 for the two Co-richest alloys. One can see that 70 hours spent at 1250°C induced both coarsening / coalescence of the chromium carbides and fragmentation for the tantalum carbides. The three nickel-richest alloys contain again two types of carbides, Cr_7C_3 and TaC in this stable state while the three cobalt-richest ones contain only TaC as carbide phase. This is again more or less consistent with the thermodynamic prediction of Thermo-Calc [16] working with the same database [17, 18] as in the first part of this work [14]. One can remark that the TaC populations of the Co-richest alloys are the most resistant against the effect of high temperature applied a long time and thus the most favourable to high level of mechanical properties at this elevated temperature.

CONCLUSIONS

The SEM characterization of the oxidized surface of the studied alloy allows to know more about the high

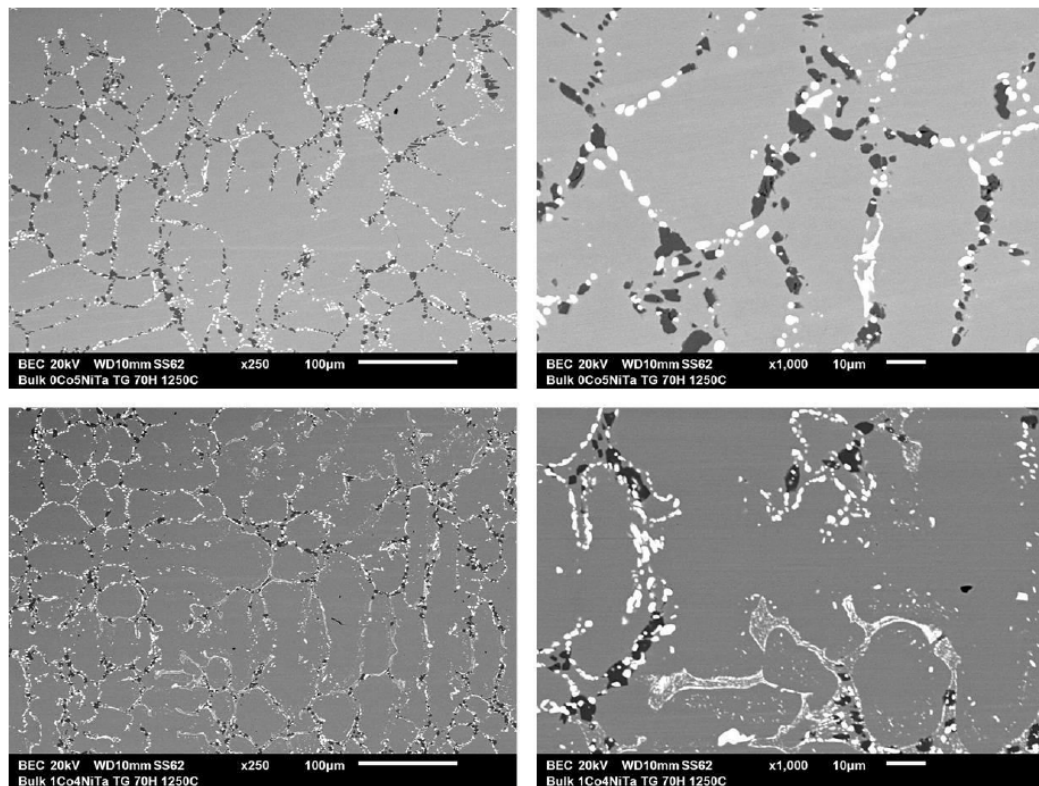


Figure 10: The new bulk microstructures of the two nickel-richest alloys (0Co5NiTa: top, 1Co4NiTa: bottom, $\times 250$: left, $\times 250$: right).

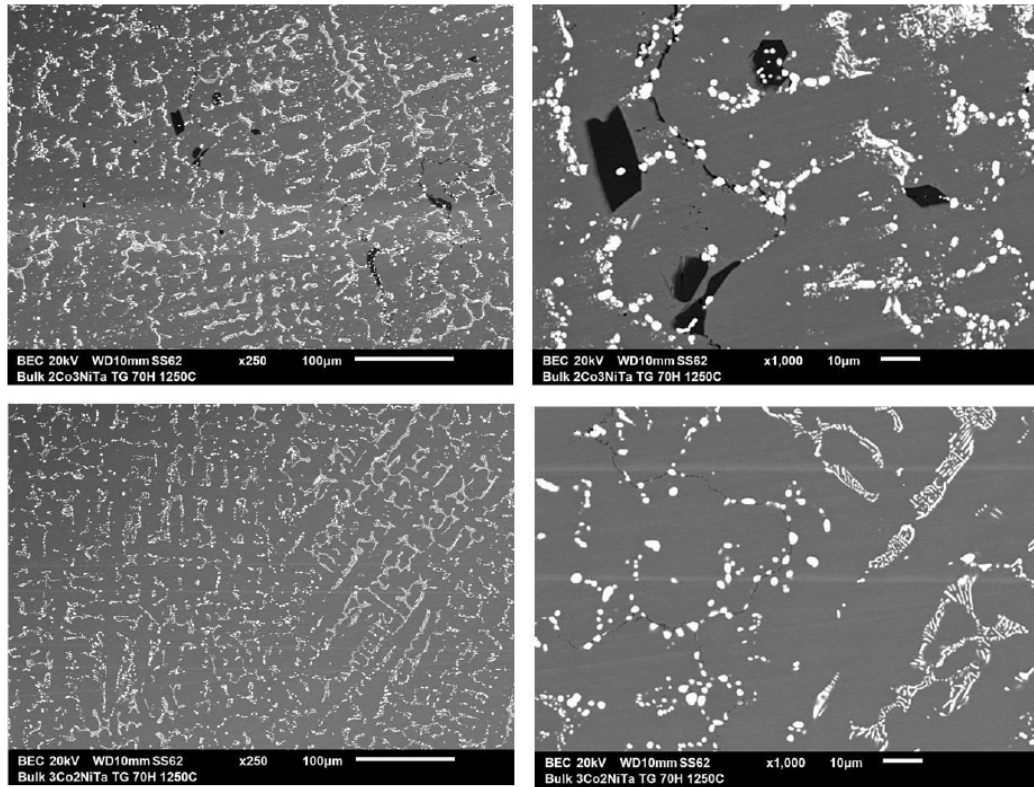


Figure 11: The new bulk microstructures of the two intermediate alloys (2Co3NiTa: top, 3Co2NiTa: bottom, ×250: left, ×250: right).

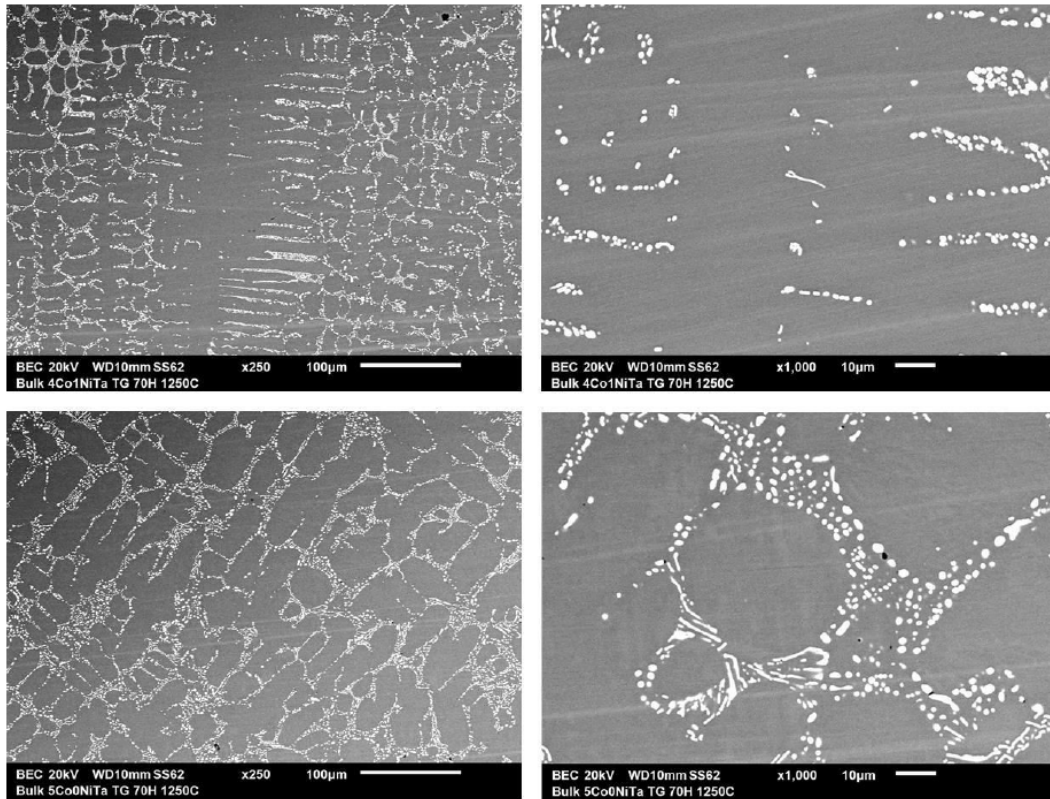


Figure 12: The new bulk microstructures of the two cobalt-richest alloys (4Co1NiTa: top, 5Co0NiTa: bottom, ×250: left, ×250: right).

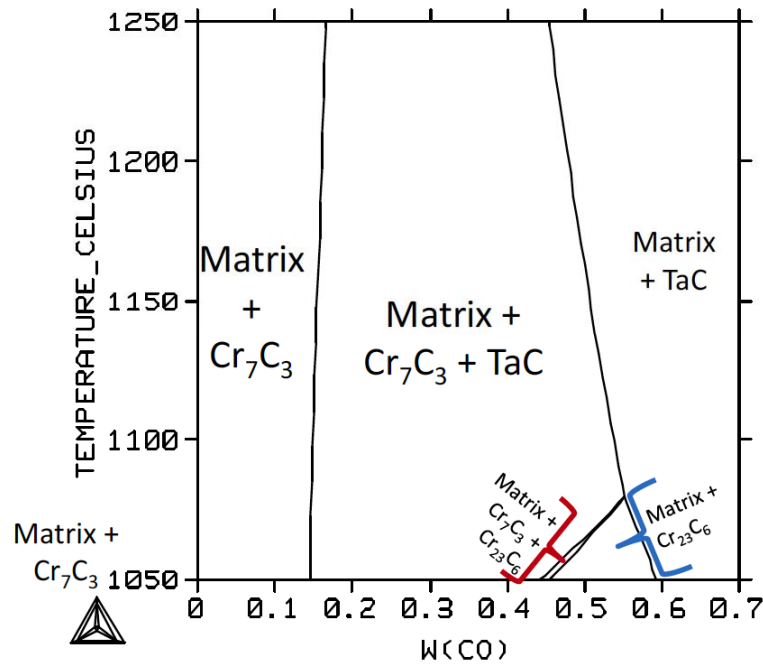


Figure 13: The high temperature solid state part of the isopleth section of the {Ni, Co, 25wt.%Cr, 0.4wt.%C, 6wt.%Ta} diagram.

temperature oxidation behavior of these cast alloys especially rich in tantalum and based on varying proportions in nickel and cobalt. First the tendency to more severe spallation during cooling, and therefore to less resistance in case of thermal cycling, was deeper investigated by identifying the oxides present on surface and the ones formed in the subsurface. The NiO, (Co,Ni)O and CoO initially present on the outermost side of the oxide scales, as well as the spinel oxides of the (Ni,Co)Cr₂O₄ or CoCr₂O₄ types were lost with the spallation of chromia spallation, while the major part CrTaO₄ oxide remained trapped in the extreme part of the sub-surface. It appears probable that this oxide of Cr and Ta is responsible to a lack of adherence of the external scale. This caused more severe spallation of the scale in the case of the nickel-richest alloys for which free Ta present in solid solution (more than in the cobalt alloys for which a major part of Ta is involved in carbides) is more mobile and leads to more CrTaO₄ oxide at the interface. Because of the spallation that it caused a great part of this oxide may have been lost itself. On another side the best resistance of the TaC carbides against fragmentation and coalescence observed in the bulk of the cobalt-richest alloys suggests better mechanical properties at elevated temperatures.

So, despite the problem of slow Cr diffusion in Co-rich matrix which threatens the isothermal oxidation resistance of the cobalt-richest alloys, these alloys are, at 1250°C, potentially stronger than the nickel-based

ones in term of cyclic oxidation resistance and creep resistance.

REFERENCES

- [1] Sims CT, Hagel WC. The superalloys. New York: John Wiley & Sons 1972.
- [2] Bradley EF. Superalloys: A Technical Guide. Metals Park: ASM International 1988.
- [3] Donachie MJ, Dionachie SJ. Superalloys: A Technical Guide (2nd edition), ASM International, Materials Park 2002.
- [4] Opiekun Z. Journal of Materials Science 1987; 22(5): 1547. <https://doi.org/10.1007/BF01132373>
- [5] Karge L, Gilles R, Mukherji D, Strunz P, Beran P, Hoffman M, Gavilano J, Keiderling U, Dolotko O, Kriele A, Neubert A, Roesler J, Petry W. Acta Materialia 2017; 132: 354. <https://doi.org/10.1016/j.actamat.2017.04.029>
- [6] Buchanan ER, Tarshis LA. Metallurgical Transactions 1974; 5(6): 1413. <https://doi.org/10.1007/BF02646627>
- [7] Woodford DA. Metallurgical Transactions A: Physical Metallurgy and Materials Science 1977; 8A(4): 639. <https://doi.org/10.1007/BF02676987>
- [8] Gui W, Zhang H, Yang M, Jin T, Sun X, Zheng Q. Journal of Alloys and Compounds 2017; 695: 1271. <https://doi.org/10.1016/j.jallcom.2016.10.256>
- [9] Kosfard P. High temperature corrosion. London: Elsevier applied science 1988.
- [10] Young DJ. High Temperature Oxidation and Corrosion of Metals, Elsevier, Amsterdam 2008.
- [11] Gozzi D, Guzzardi G, Montozzi M, Cignini PL. Solid State Ionics 1997; 101-103(2): 1243. [https://doi.org/10.1016/S0167-2738\(97\)00413-X](https://doi.org/10.1016/S0167-2738(97)00413-X)
- [12] Szoekfalvi-nagy A, Jehn H. Zeitschrift für Metallkunde 1984; 75(5): 389.
- [13] Matsushita J, Takeuchi K. Journal of Advanced Science 1998; 10(2&3): 100. https://doi.org/10.2978/jas.10.2-3_100

- [14] Aranda L, Berthod P, Gomis J-PK, Himeur Z. Journal of Materials Science and Technology Research 2019; 6: 53-62. <https://doi.org/10.15377/2410-4701.2019.06.7>
- [15] Berthod P, Aranda L, Medjahdi G, Gomis J-PK. Journal of Materials Science and Technology Research 2019; 6: 63-72. <https://doi.org/10.15377/2410-4701.2019.06.8>
- [16] Thermo-Calc Version N. Foundation for Computational Thermodynamics, Stockholm, Sweden, Copyright, 1993, 2000. www.thermocalc.com
- [17] SSOL Database, SGTE Solutions Database, Scientific Group Thermodata Europe, Bo Sundman, Stockholm, Sweden, 1992.
- [18] Michon S. PhD thesis, University Henri Poincaré Nancy I, 2004.

Received on 14-10-2019

Accepted on 17-10-2019

Published on 25-10-2019

DOI: <https://doi.org/10.15377/2410-4701.2019.06.9>

© 2019 Gomis *et al.*; Zeal Press

This is an open access article licensed under the terms of the Creative Commons Attribution Non-Commercial License (<http://creativecommons.org/licenses/by-nc/3.0/>) which permits unrestricted, non-commercial use, distribution and reproduction in any medium, provided the work is properly cited.