



HAL
open science

Daily gridded datasets of snow depth and snow water equivalent for the Iberian Peninsula from 1980 to 2014

E. Alonso-González, J. Ignacio López-Moreno, Simon Gascoin, M. García-Valdecasas Ojeda, A. Sanmiguel-Valladolid, F. Navarro-Serrano, J. Revuelto, A. Ceballos, M.J. Esteban-Parra, R. Essery

► To cite this version:

E. Alonso-González, J. Ignacio López-Moreno, Simon Gascoin, M. García-Valdecasas Ojeda, A. Sanmiguel-Valladolid, et al.. Daily gridded datasets of snow depth and snow water equivalent for the Iberian Peninsula from 1980 to 2014. *Earth System Science Data*, 2018, 10 (1), pp.303–315. 10.5194/essd-10-303-2018 . hal-02351624

HAL Id: hal-02351624

<https://hal.science/hal-02351624>

Submitted on 15 Jan 2021

HAL is a multi-disciplinary open access archive for the deposit and dissemination of scientific research documents, whether they are published or not. The documents may come from teaching and research institutions in France or abroad, or from public or private research centers.

L'archive ouverte pluridisciplinaire **HAL**, est destinée au dépôt et à la diffusion de documents scientifiques de niveau recherche, publiés ou non, émanant des établissements d'enseignement et de recherche français ou étrangers, des laboratoires publics ou privés.



Distributed under a Creative Commons Attribution - NonCommercial 4.0 International License



Daily gridded datasets of snow depth and snow water equivalent for the Iberian Peninsula from 1980 to 2014

Esteban Alonso-González¹, J. Ignacio López-Moreno¹, Simon Gascoïn²,
Matilde García-Valdecasas Ojeda³, Alba Sanmiguel-Valladolid¹, Francisco Navarro-Serrano¹,
Jesús Revuelto⁴, Antonio Ceballos⁵, María Jesús Esteban-Parra³, and Richard Essery⁶

¹Instituto Pirenaico de Ecología, Consejo Superior de Investigaciones Científicas (IPE-CSIC), Zaragoza, Spain

²Centre d'Etudes Spatiales de la Biosphère (CESBIO), UPS/CNRS/IRD/CNES, Toulouse, France

³Departamento de Física Aplicada, Facultad de Ciencias, Universidad de Granada, Granada, Spain

⁴Météo-France – CNRS, CNRM (UMR3589), Centre d'Etudes de la Neige, Grenoble, France

⁵Dept. Geografía, Universidad de Salamanca, Salamanca, Spain

⁶School of GeoSciences, University of Edinburgh, Edinburgh, UK

Correspondence: Esteban Alonso-González (e.alonso@ipe.csic.com)

Received: 11 September 2017 – Discussion started: 20 October 2017

Revised: 28 December 2017 – Accepted: 8 January 2018 – Published: 20 February 2018

Abstract. We present snow observations and a validated daily gridded snowpack dataset that was simulated from downscaled reanalysis of data for the Iberian Peninsula. The Iberian Peninsula has long-lasting seasonal snowpacks in its different mountain ranges, and winter snowfall occurs in most of its area. However, there are only limited direct observations of snow depth (SD) and snow water equivalent (SWE), making it difficult to analyze snow dynamics and the spatiotemporal patterns of snowfall. We used meteorological data from downscaled reanalyses as input of a physically based snow energy balance model to simulate SWE and SD over the Iberian Peninsula from 1980 to 2014. More specifically, the ERA-Interim reanalysis was downscaled to 10 km × 10 km resolution using the Weather Research and Forecasting (WRF) model. The WRF outputs were used directly, or as input to other submodels, to obtain data needed to drive the Factorial Snow Model (FSM). We used lapse rate coefficients and hygrobarometric adjustments to simulate snow series at 100 m elevations bands for each 10 km × 10 km grid cell in the Iberian Peninsula. The snow series were validated using data from MODIS satellite sensor and ground observations. The overall simulated snow series accurately reproduced the interannual variability of snowpack and the spatial variability of snow accumulation and melting, even in very complex topographic terrains. Thus, the presented dataset may be useful for many applications, including land management, hydrometeorological studies, phenology of flora and fauna, winter tourism, and risk management. The data presented here are freely available for download from Zenodo (<https://doi.org/10.5281/zenodo.854618>). This paper fully describes the work flow, data validation, uncertainty assessment, and possible applications and limitations of the database.

1 Introduction

Seasonal snowpack exerts an important control on the hydrology and economy of many mountainous and cold regions worldwide (Barnett et al., 2005). Snow variability also affects different ecological processes, such as species composition, distribution, and phenology (Keller et al., 2000; Wipf et al., 2009). For example, snowpack on Mediterranean mountains

is a crucial source of water during the dry season (Fayad et al., 2017; García-Ruiz et al., 2011; Viviroli et al., 2007). Long-term data are required to analyze the spatiotemporal dynamics of snowpack, to assess the importance of snow as a resource, and to understand the effect of climatic fluctuations. However, there are only limited in situ observations of snowpack for most mountain regions (Raleigh et al., 2016). Currently remote-sensing techniques can only reliably pro-

vide information about snow cover based on observations in the visible spectrum (Dietz et al., 2012). Current spaceborne sensors do not provide accurate data on snow water equivalent (SWE) and/or snow depth (SD) in mountainous regions (Dozier et al., 2016). Microwave imaging has a coarse resolution (grid cell size: ~ 25 km), so does not characterize snowpack variability in the Mediterranean mountains, which have a high spatial heterogeneity not captured with this resolution. There are also spatial and temporal limitations when attempting to estimate snowpack using close-range remote-sensing techniques such as lidar (Revuelto et al., 2016).

There are limited in situ snow observations and meteorological data at high elevations in the Iberian Peninsula. Although the number of monitored sites has increased in recent years, there are no long-term series and there is insufficient characterization of snowpack dynamics at a regional scale. However, snowpack in the Iberian Peninsula is an important hydrological and also economical resource. An area of 19456.4 km² in the Iberian Peninsula lies above 1500 m a.s.l., mostly in the five most important mountain ranges (Pyrenees, Cantabrian Mountains, Central System, Iberian Range, and Sierra Nevada). At this elevation, snowpack occurs for at least 4 months of the year (López-Moreno et al., 2011) making it a critical resource for water management in the largest hydrological basins (Morán-Tejeda et al., 2014). Snowpack influences the interannual variability of water resources (López-Moreno and García-Ruiz, 2004) and the timing of the winter low flows and spring peak flows (Sanmiguel-Vallelado et al., 2017). Moreover, winter tourism (mainly skiing) has been increasingly important to the economy of mountain valleys in recent decades, and the large interannual fluctuations of snowpack in the different mountain regions of the Iberian Peninsula affect the economic viability of tourism (Gilaberte-Búrdalo et al., 2014, 2017).

The importance of snow to the environment and economy of the Iberian Peninsula, and the lack of data on snowpack in this region, motivated us to use meteorological outputs from downscaled reanalysis data to simulate snowpack at different elevations in the Iberian Peninsula. Atmospheric reanalyses, based on data assimilation and modeling (Saha et al., 2010), can provide important information about the temporal evolution of the atmosphere. Meteorological variables obtained from reanalysis data can be used as inputs for models of snow mass and energy balance which can be applied to describe the behavior of the snowpack over large areas (Brun et al., 2013; Krogh et al., 2015; Wegmann et al., 2017). However, the coarse resolution (cell size: around tens of kilometers) implies these simulations may have insufficient spatial resolution for characterizing the topographical complexity of mountain areas (Mass et al., 2002). To overcome this limitation, regional climate models (RCMs) are often used to obtain better representations of surface climatology, because they downscale physically reanalysis products (García-Valdecasas Ojeda et al., 2017; Kryza et al., 2017; Warrach-Sagi et al., 2013). Previous studies have used RCMs to study

SD and SWE dynamics at finer resolutions (grid cell size: 5 to 11 km) when they are driven with reanalyses, and the resolution increases further (grid cell size: 1 km) when using forecasted data (Bellaire et al., 2011; van Pelt et al., 2016; Quéno et al., 2016; Wu et al., 2016).

van Pelt et al. (2016) used the High Resolution Limited Area Model (HIRLAM) in Svalbard (Norway), with forcing by ERA-40 and ERA-Interim reanalysis, and then used the meteorological simulation as driving data for SnowModel (Liston and Elder, 2006a). Their results support the usefulness of the methodology extracting snowpack trends from these data. Wu et al. (2016) used a similar procedure to describe the behavior of snowpack over the Altai Mountains in China. They coupled outputs from the Weather Research and Forecasting (WRF) model (Skamarock et al., 2008) driven by NCEP/NCAR reanalysis with a temperature index model (based on remote sensing), and their results had low error values. To increase the spatial resolution of the WRF outputs, they used the MICROMET model (Liston and Elder, 2006b), a submodel of SnowModel in which WRF outputs are interpolated to a new grid, and then corrected physically according to topography. Wrzesien et al. (2017) tested the capability of WRF to estimate SWE over complex terrain concluding that WRF simulations can be used over areas with few observational data.

We used a different approach, in an effort to make our database more computationally practicable and to avoid the uncertainties of the statistical interpolations of climatological variables over complex areas. More specifically, we projected WRF outputs to different elevation bands to generate simulations for multiple elevations. This procedure allows one to study the elevation-dependent characteristics of the snowpack over different mountain ranges, preserving the WRF output resolution.

Our procedure uses the physically based Factorial Snow Model (FSM; Essery, 2015), which is fed by ERA-Interim reanalysis (Berrisford et al., 2011), and downscaled by the WRF model. The final products of our analysis are simulated daily time series of SD and SWE at different elevations from 1980 to 2014.

2 Data and methods

We used an existing WRF simulation (cell size: 10 km) for the whole Iberian Peninsula (Fig. 1), with a 3 h time step from January 1979 to November 2014, as input data for the FSM. Most inputs of the FSM were extracted directly from the WRF simulation, but some were calculated using other submodels. We projected the WRF outputs and derived variables to different elevation bands, from 500 to 2900 m a.s.l. at steps of 100 m, from the WRF pixel elevation using several hygrometric and psychrometric formulas and elevation lapse rates. FSM outputs were aggregated at a daily time step in order to increase the manageability of the data. Validation

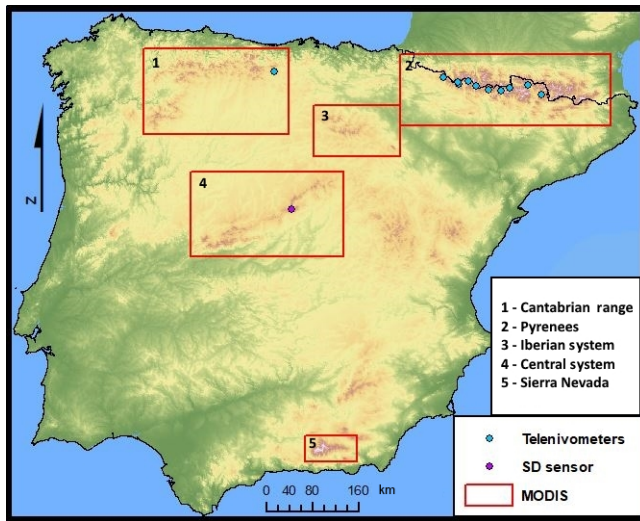


Figure 1. Digital elevation model (DEM) of the Iberian Peninsula and locations of the telenivometers, Cotos Pass SD sensor, and MODIS study areas.

was performed at different steps of the workflow using different observational data sources. Figure 2 shows the workflow completely, which is described in more detail below. Appendix A lists all the abbreviations used in this study.

2.1 Meteorological driving data

The meteorological variables were calculated using the WRF model, a mesoscale climate model. Previous researchers used this model to simulate climate at regional scales for analysis of past, present, and future conditions (Chen et al., 2011; Heikkilä et al., 2011). The spatial resolution of our simulation is 0.088° (~ 10 km) and the time step is 3 h. ERA-Interim reanalysis (Berrisford et al., 2011) was used as driving data for the WRF model. With this procedure all meteorological variables for running snowpack models were generated for the whole Iberian Peninsula. The WRF configuration was described in detail by García-Valdecasas Ojeda et al. (2017). This simulation provided the following variables: wind speed (U_a), surface temperature (T), precipitation (Pr), relative humidity (RH), shortwave incoming radiation (SW), and atmospheric pressure (P_s).

2.2 Snow energy and mass balance model

SD and SWE time series were obtained using a mass and energy balance snowpack model. The FSM is a multi-physics snow model that simulates the accumulation and melting of snow (Essery, 2015). This model allows selection of two options for parameterizations of five different processes, thereby enabling 32 different model configurations. The configuration used to develop our simulations decreases snow albedo and increases snow density at different rates for cold and

melting snow, calculates thermal conductivity as a function of snow density, adjusts the turbulent exchange coefficient as a function of the bulk Richardson number, and allows retention and refreezing of liquid water inside the snowpack.

The model works with different numbers and thicknesses of layers, depending on snowpack depth. Thus, it assumes a single layer when snow depth is less than 0.2 m, and a maximum of three layers when the depth is greater than 0.5 m. This configuration allows the model to characterize the highly variable climatological conditions of the Iberian mountains. In addition to the variables provided by the WRF simulation (listed in Sect. 2.1), the FSM also needs estimates of snow rate (Sf), rain rate (Rf), and longwave incoming radiation (LW). To avoid the expense of rerunning WRF in this study, these variables have been reconstructed from available WRF simulation outputs.

To calculate Sf and Rf, we used a psychrometric energy balance method (PPPM; Harder and Pomeroy, 2013), which uses relative humidity and air temperature to calculate the surface temperature of falling hydrometeors. From this value, the fraction of liquid precipitation is as follows:

$$f_r(T_i) = \frac{1}{1 + bcT_i}, \quad (1)$$

where f_r is the percentage of liquid precipitation, T_i is the temperature ($^\circ\text{C}$) of the falling hydrometeor, and b and c are derived from statistical fits (2.50286 and 0.125006, respectively, for hourly time intervals). T_i is calculated from Eq. (2), which we solved numerically using the method described by Brent and Richard (1972):

$$T_i = T_a + \frac{D}{\lambda_t} L (\rho_{T_a} - \rho_{\text{sat}(T_i)}) \quad (2)$$

where T_a is the temperature (K), D is the diffusivity of water vapor in air ($\text{m}^2 \text{s}^{-1}$), λ_t is the thermal conductivity of air ($\text{W m}^{-1} \text{K}^{-1}$), L is the latent heat of sublimation or vaporization (J kg^{-1}), and ρ_{T_a} and $\rho_{\text{sat}(T_i)}$ (kg m^{-3}) are respectively the vapor densities in free atmosphere and at the saturated hydrometeor surface. This methodology gives the percentage of liquid precipitation; the percentage of solid precipitation is directly calculated from f_r .

Incoming longwave radiation (W m^{-2}) was estimated from the Stefan–Boltzmann law:

$$L_\downarrow = \varepsilon \sigma T_a^4, \quad (3)$$

where σ is the Stefan–Boltzmann constant and ε is the emissivity of the atmosphere.

Emissivity was calculated as a function of elevation and cloud cover, as proposed by Liston and Elder (2006b), who used a variation of the methodology described by Iziomon et al. (2003). Thus, emissivity is calculated as follows:

$$\varepsilon = 1.083 \left(1 + Z_s \text{cc}^2 \right) \left[1 - X_s \exp(-Y_s e / T_a) \right], \quad (4)$$

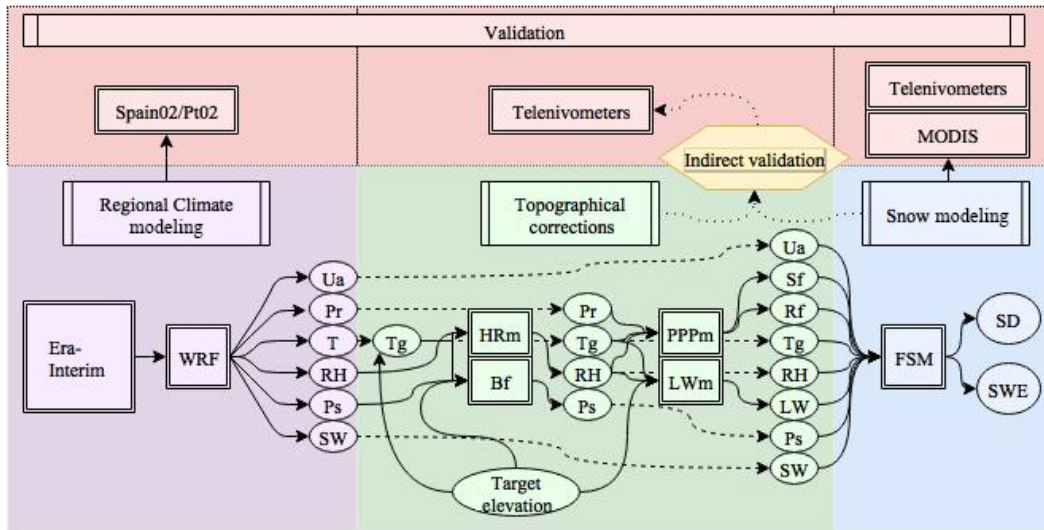


Figure 2. Simulation workflow. Squared boxes represent modeling steps and rounded boxes represent meteorological variables. Variables that are not inputs or outputs of a model are indicated by dotted lines (see a glossary of abbreviations used in Appendix A).

where e (Pa) is the atmospheric vapor pressure, cc is the fractional cloud cover, and X_s , Y_s , and Z_s are coefficients that are corrected with elevation:

$$\begin{aligned} C_s &= C_1 & z < 200 \text{ m a.s.l.}, \\ C_s &= C_1 + (z - z_1) \left(\frac{C_2 - C_1}{z_2 - z_1} \right) & 200 \text{ m a.s.l.} \leq z \leq 3000 \text{ m a.s.l.}, \\ C_s &= C_2 & 3000 \text{ m a.s.l.} < z, \end{aligned}$$

where $z(m)$ is the elevation above sea level, and X_s , Y_s , and Z_s can be substituted for C , with $X_1 = 0.35$, $X_2 = 0.51$, $Y_1 = 0.100 \text{ K Pa}^{-1}$, $Y_2 = 0.130 \text{ K Pa}^{-1}$, $Z_1 = 0.224$, $Z_2 = 1.100$, $z_1 = 200 \text{ m a.s.l.}$, and $z_2 = 3000 \text{ m a.s.l.}$

Different parameterizations using SW were tested to estimate c_c , from potential SW, a more accurate approach than the parameterization proposed by Liston and Elder (2006b), according to Gascoin et al. (2013). This approach uses the relationship between SW and potential SW radiation that is restricted to daylight hours. Thus, in this work, we used the parameterization proposed by Walcek (1994) for c_c estimation, which is the original parameterization proposed by Liston and Elder (2006b).

$$c_c = 0.832 \exp\left(\frac{\text{RH}_{700} - 100}{41.6}\right), \quad (5)$$

where RH_{700} is the relative humidity at 700 mb.

The methodology used to project RH to 700 mb elevation is described below. To scale the snow simulations to different elevations, we first used the internationally accepted standard air temperature lapse rate ($\beta = 0.0065 \text{ K m}^{-1}$; Barry and Chorley, 1987; ISO, 1975) to project the surface air temperature. For RH, the methodology proposed by Liston and Elder (2006b) was used, in which a lapse rate is applied to the dew point temperature (HRm). First, we calculated the dew

point temperature from RH and the saturation vapor pressure. Then, we applied the standard air temperature lapse rate to the dew point temperature, and recalculated the RH at the target elevation from the scaled dew point temperature and the saturation vapor pressure. Once we rescaled temperature and RH, we calculated the precipitation phase and LW radiation at the different elevations.

Finally, to estimate the scaled surface air pressure we used a generalization of the barometric formula for scenarios that consider air temperature lapse rates (Berberan-Santos et al., 1997):

$$p(z) = p_{(0)} \left(1 - \frac{\beta \cdot z}{T_a} \right)^{\frac{mg/R\beta}{\beta}}, \quad (6)$$

where $p_{(0)}$ is the surface air pressure, z is the elevation difference (m), m is the molecular mass of air ($0.0289644 \text{ kg mol}^{-1}$), and R is the universal gas constant ($8.31432 \text{ J K}^{-1} \text{ mol}^{-1}$).

2.3 Validation procedure

Validation was performed at different resolutions and at different steps of the workflow, using all available observational data (Fig. 2). Previous studies (Argüeso et al., 2012; García-Valdecasas-Ojeda et al., 2016) simulated temperature and precipitation using WRF at different timescales compared with the grids, based on observations from Spain02 (Herrera et al., 2012) and PT02 (Belo-Pereira et al., 2011), high-resolution precipitation and temperature gridded datasets for Spain and Portugal, respectively. The results indicated proper simulation of the major patterns of precipitation and temperature, even for extreme events. Subsequent research showed that the downscaling made by WRF provided improved ac-

curacy compared to ERA-Interim data, due to the higher resolution (García-Valdecasas Ojeda et al., 2017).

In this work, we used the Moderate-Resolution Imaging Spectroradiometer (MODIS) satellite sensor to validate our snow cover product for the period September 2000 to November 2014. Similarly, we used data from telenivometers, which were available in the Pyrenees from October 2009 to June 2014.

First, we compared MODIS data with the SD and SWE time series (10 km resolution). MODIS snow maps were generated using the same workflow for each mountain range in the study area (Pyrenees, Cantabrian Mountains, Central System, Iberian Range, and Sierra Nevada). We downloaded all the available MOD10A1 and MYD10A1 products (version 5) from the National Snow and Ice Data Center (Hall et al., 2006). The original granules were mosaicked and re-projected from the sinusoidal system to the Universal Transverse Mercator (UTM) reference system. Then, we ran a gap-filling algorithm, using the binary snow product to avoid data losses due to cloud cover (Gascoin et al., 2015). This provided gap-free daily maps showing the presence and absence of snow in each mountain range from 2000 to 2014. From these maps, the probability of snow was calculated as follows:

$$P_{(\text{Snow})} = \frac{N_s}{N} \times 100, \quad (7)$$

where $P_{(\text{Snow})}$ is the probability of snow (%), N_s is the number of days with snow, and N is the total number of days of the period.

Snow probability maps were also calculated from the FSM snow cover maps. In this work, we chose a threshold of 0.11 m for SD and a threshold of 40 mm for SWE (Gascoin et al., 2015) in the FSM time series. This allowed us to generate snow cover maps from FSM outputs. Then, we aggregated the MODIS pixels (500 m) to the simulation grid (~ 10 km), with averaging of the values of MODIS pixels to make them comparable.

We also used data from 11 telenivometers, which measure sub-hourly SWE and SD using gamma ray attenuation and acoustic sensors. These data were provided by the ERHIN program (Estimación de Recursos Hídricos Procedentes de la Nieve) of the Hydrological Ebro River Basin Authority (Navarro-Serrano and López-Moreno, 2017). Ten telenivometers were located in the Pyrenees, and one in the Cantabrian Mountains. A complete description of the telenivometers and their locations can be found at www.saihhebro.com. We also used an SD sensor in the Central System mountain range (Durán et al., 2017), which is from the National Meteorological Agency of Spain (AEMET). We projected the meteorological variables from the WRF simulation to elevations of the different telenivometers for simulations. Figure 3 shows a comparison of the modeled and observed SD time series at these 10 sites.

It must be noted that it is challenging to validate gridded products from ground-based data (Snauffer et al., 2016). Snowpack can have large variability over small distances (López-Moreno et al., 2015; Meromy et al., 2013). This implies that punctual measurements may not be representative of the 10 km resolution data, even when comparing a simulation at the same elevation as the telenivometer. In addition, snow measurements always include biases from the different measuring devices (Kinar and Pomeroy, 2015). Thus, we focused on the temporal patterns of snowpack during the season. More specifically, we compared the accumulation patterns during the season, assuming that accumulation and melting rates were similar in the simulated and observational data, but that SD and SWE likely differ between the telenivometer and the simulation.

Thus, we first compared different percentiles of SD and SWE in the telenivometer and the simulated time series. Then, using each percentile as a threshold for snow presence, we converted the series into binary data, allowing use of the kappa test (Cohen, 1960) for each percentile. The kappa coefficient ranges from 1 and < 0 , but it is difficult to assign an agreement criterion based on kappa value. Thus, we used the thresholds proposed by Landis and Koch (1977), which basically agree with values proposed by Fleiss et al. (1969; < 0.00 : poor; 0.00–0.20: slight; 0.21–0.4: fair; 0.41–0.60: moderate; 0.61–0.80: substantial; and 0.81–1.00: almost perfect). We examined percentile values between 10 and 90 %, as more representative of snow accumulation during the season.

3 Results

3.1 Validation

Our analysis of the probability of snow presence from MODIS and FSM shows that the outputs had good correlations (Fig. 4). This analysis compared the probability of snow at each pixel (~ 10 km \times 10 km) from MODIS and FSM outputs for the SWE and SD time series from September 2000 to November 2014. The mean coefficient (R^2) was 0.76, and a mean absolute error was 6.3 %. This analysis also shows the correlations for each mountain range, and the distribution of errors for SWE and SD (simulated less observed).

These results also show there are no significant differences in the errors of $P_{(\text{Snow})}$ for the different mountain ranges. However, the correlation was not strong for the Sierra Nevada range, probably due to its limited snow cover, although this remained inside the variability of the scatter plot.

Validation of these results with telenivometers indicated kappa values for thresholds in the 10th to 90th percentiles of each season (Fig. 5). The kappa values were mostly above 0.6, although accuracy declined for the highest percentiles.

The kappa coefficient does not account for the displacement magnitude of the different percentiles, and a difference of a few days at the time of peak accumulation may

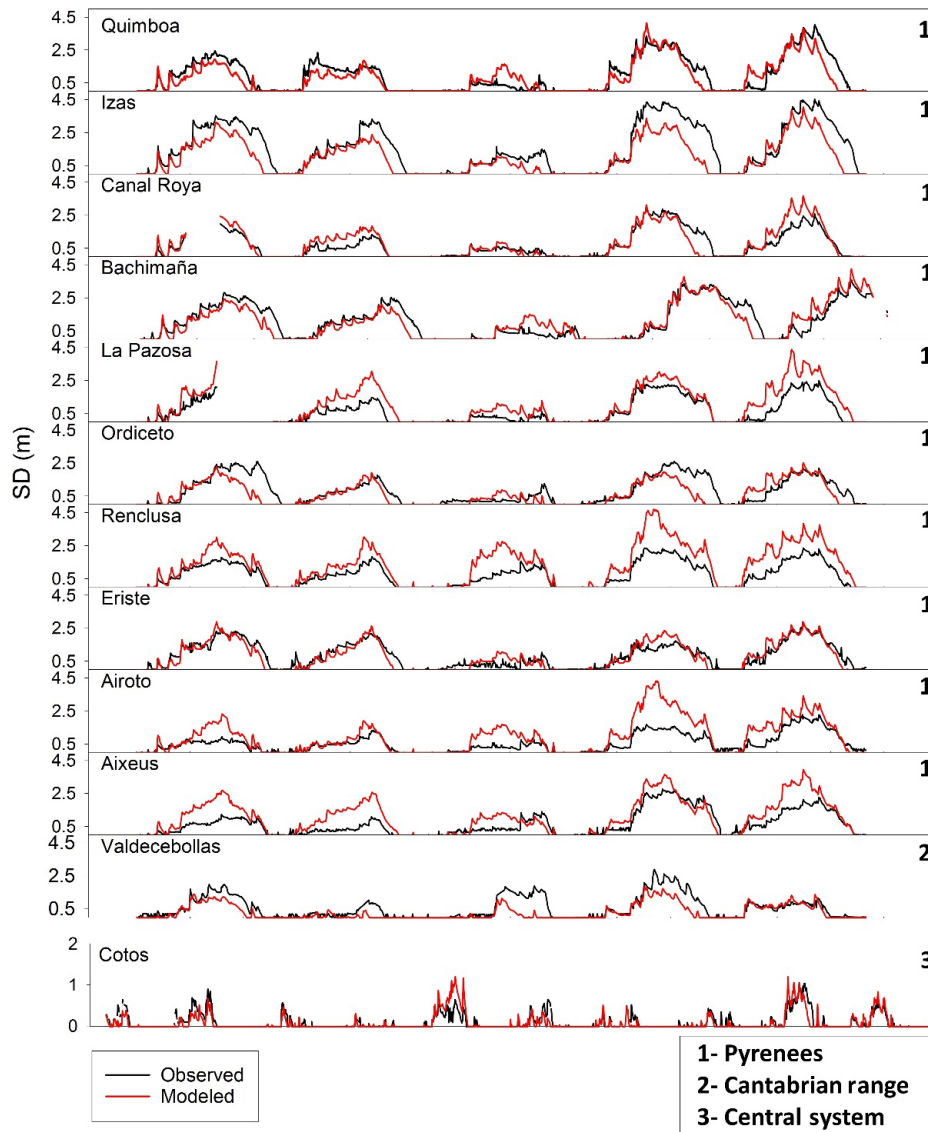


Figure 3. Comparison between modeled (red) and observed (black) SD time series for each telenivometer and the Cotos SD sensor.

cause a sharp decrease in the kappa value. This is the reason for the loss of accuracy at the highest percentiles. Thus, we further analyzed these data to determine the time of the year when snowpack exceeded the 90th, 75th, and 50th percentiles at each telenivometer in the observed (OBS) and simulated (SIM) series (Fig. 5c). This analysis shows that, despite small temporal shifts, the simulated snow series accurately represents the temporal patterns when different snow percentiles are exceeded.

The biggest shift in the position of the 90th and 75th percentiles was during the 2011/2012 season. This season was extremely dry on the Iberian Peninsula, and there were very few snowfall events (Fig. 3). Thus, a small bias in the simulation of a single event during this time could lead to a large

error in prediction of the magnitude and timing of SD and SWE maxima.

3.2 Gridded snow dataset: applications and limitations

The final products of the models are daily gridded datasets (resolution: 0.088° , ~ 10 km) of SD and SWE at elevations from 500 to 2900 m a.s.l. (100 m intervals) from 1980 to 2014. The datasets (ncdf4 format) cover the entire Iberian Peninsula, including the north side of the Pyrenees in France. Each dataset contains information of the entire Iberian Peninsula and a mask that covers pixels that do not present areas at the elevations of the simulation estimated from a 250 m resolution DEM.

This snow database provides new opportunities for studies of snow in the Iberian Peninsula. In particular, the tem-

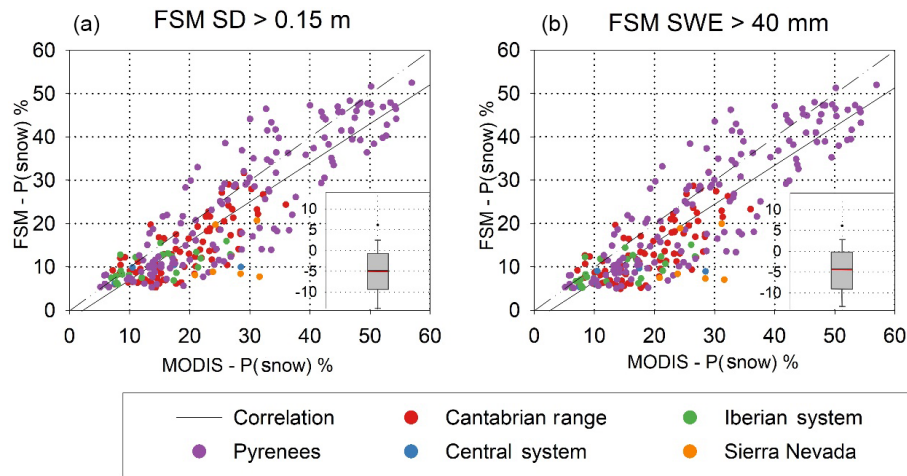


Figure 4. Correlation between the long-term (2000–2015) mean probability of snow depth (a) and snow water equivalent (b) from MODIS data and from FSM output. Box plot insets show the frequency distributions of errors (%), with the central red lines indicating average errors, boxes indicating the 25th and 75th percentiles, bars indicating the 10th and 90th percentiles, and dots indicating the 5th and 95th percentiles.

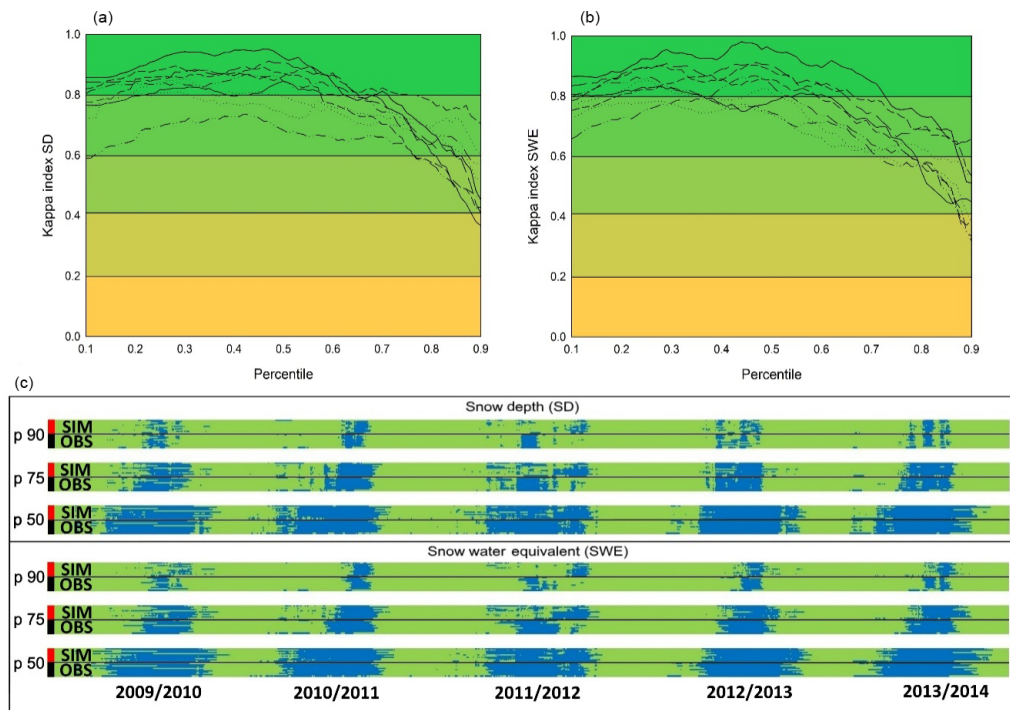


Figure 5. Kappa values derived from comparison of observed and simulated series for different percentiles of snow depth (a) and snow water equivalent (b), and periods of the year (blue) when snowpack exceeds the 90th, 75th, and 50th percentiles (c). In (c), each pair of bands shows the times when the different percentiles in the observed (OBS) and simulated (SIM) series at each telenivometer exceeded the indicated percentile.

poral resolution and the duration of the series show significant improvements over previous observational data. Also, the geographic data generated on SD and SWE provides the opportunity to obtain more snow and hydrologically relevant information than available from remote sensing alone. It is also possible to develop different snow products at different

elevations, allowing for comparison of different elevations and different regions. For example, Fig. 6 shows the long-term average interannual maximum SD and SWE at three different elevations.

Figure 7 shows examples of other snow variables that can be derived from the database: average number of snowfall

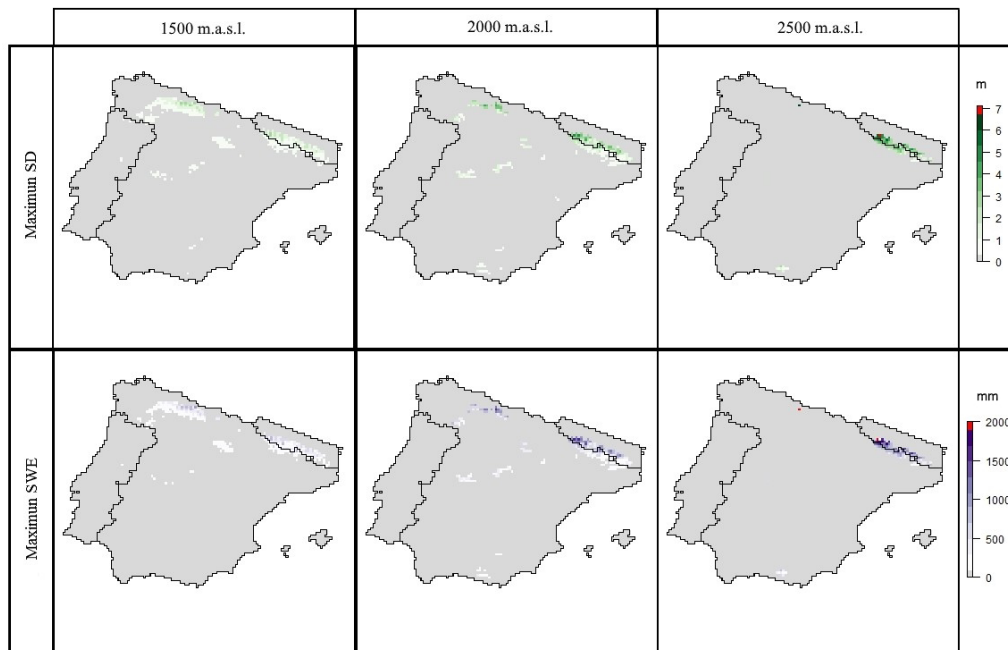


Figure 6. Long-term (1980–2014) average maximum SWE and SD grids at 1500, 2000, and 2500 m a.s.l.

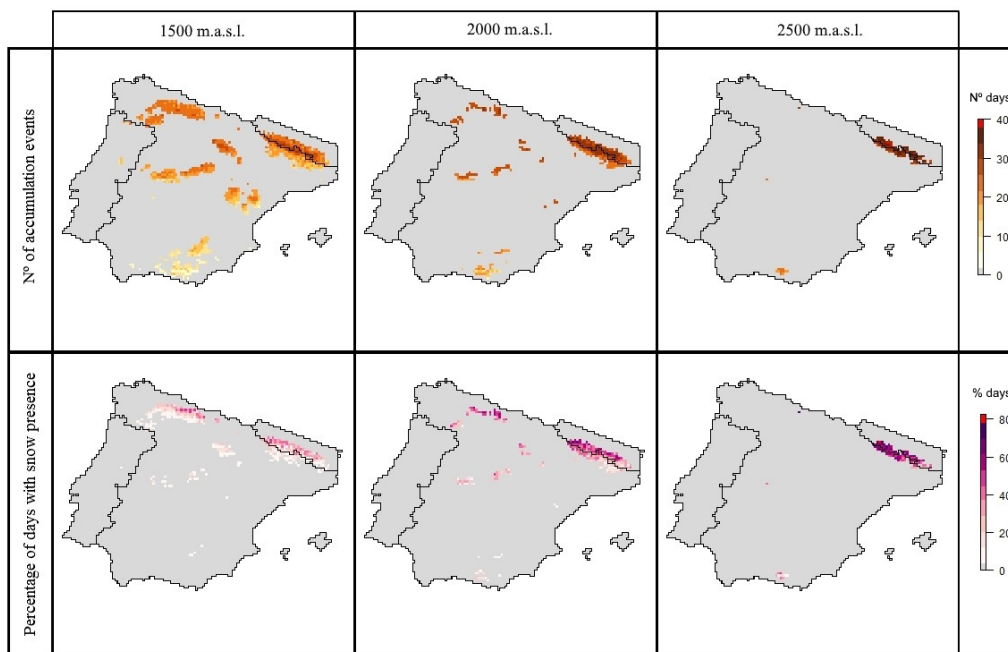


Figure 7. Long-term (1980–2014) average number of snowfall events and percentage of snow presence at 1500, 2000, and 2500 m a.s.l.

events and percentage of days with snow cover at three elevations. These analyses are particularly useful for the development of different snow climatologies for the whole Iberian Peninsula, or for specific areas, in studies that rely on ecological data (e.g., phenology or distribution of plants and animals, forest growth), studies that require hydrological pa-

rameters for different catchments, and studies that determine risk maps for snow-related events.

It is also possible to extract daily time series for different areas or elevations at each pixel. For example, Fig. 8 compares SWE series at three elevations in the pixel at the highest peak of the Pyrenees (Aneto Peak, 3404 m a.s.l.). Thus, these series allows for the study of different annual snow accu-

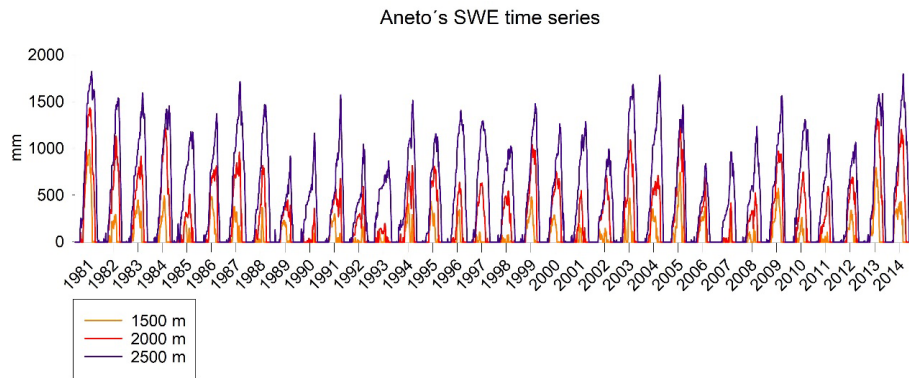


Figure 8. Comparison of SWE time series at 1500, 2000, and 2500 m a.s.l. at Aneto Peak.

mulation and melting patterns at a specific location and how elevation influences snow evolution. Similarly, it enables one to study the existence of temporal trends or the occurrence of extreme snowfall and melting events.

The database contains uncertainties that are not easy to quantify, due to the limited amount of observational data. Biases may be due to uncertainty of the boundary conditions from the ERA-Interim reanalysis (Chaudhuri et al., 2013) since errors from the WRF downscaling model are difficult to quantify in mountain areas (Gutmann et al., 2012), and uncertainties that typically result from simulations of snow mass and energy balance from meteorological data (Essery et al., 1999, 2013; Magnusson et al., 2015). The use of the standard air temperature lapse rate could also be a source of uncertainty. Although other studies have observed a decrease in the lapse rate during winter months, this effect is result of thermic inversions that are not considered to be due to the spatial resolution of the simulation.

Despite these limitations, we had very satisfactory results when testing the duration and the interannual variability of the snowpack against MODIS and telenivometer data, which provided reliable observations during several snow seasons. This way, the database presents a reliable validation for more than a third of the time period generated. When using this database, it is important to consider that it was based on the assumption of flat topography within each $10\text{ km} \times 10\text{ km}$ pixel. Therefore, this dataset is not suitable for studies of snow variability due to terrain aspect, slope, and snow redistribution processes, such as avalanches and wind transport.

4 Data availability

The data presented here are freely available for download from Zenodo (<https://doi.org/10.5281/zenodo.854618>). SD and SWE datasets are in netCDF4 format, with one file for each elevation band. The observational information used to validate the main data is also available for download. All telenivometer data are in CSV format. Daily snow cover (derived from MODIS) is provided as five multiband GeoTiff

files (one file for each mountain range, each band is a date), and a CSV file indicates the date of each band.

The FSM code is freely available from <https://github.com/RichardEssery/FSM> (Essery, 2015).

5 Conclusions

We presented a new daily gridded database of SD and SWE for the Iberian Peninsula from 1980 to 2014 period at a resolution of 0.088° ($\sim 10\text{ km}$). The database consists of 50 netCDF4 files for SD and SWE from 500 to 2900 m a.s.l., and another 2 files of WRF simulation DEMs, summing more than 652 000 maps. A mask label of “no data” is included if the grid is not found at the elevation of the simulated elevation band.

The scarcity of snow observations in the Iberian Peninsula made it necessary to couple a dynamic downscaling of ERA-Interim reanalysis using the WRF model by use of a snow energy and mass balance model (FSM). Input data of FSM provided directly, or estimated from WRF outputs, were available for the average elevation of each $10\text{ km} \times 10\text{ km}$ pixel, and these data were transformed to achieve an elevation offset at 100 m intervals.

Despite some uncertainties, the database is consistent with available observational data. More specifically, validation with MODIS data indicated an error of 6.07 % and an R^2 of 0.76 from the analysis of the mean presence of snow. The database also provides good representation of the temporal patterns of the telenivometers, with kappa values generally over 0.6, and above 0.4 for all analyzed percentiles.

This database will be an important resource for studies of many different hydrological, environmental, and economic processes in Mediterranean areas. Thus, we expect the database presented here will be useful for future snow-related studies at regional scales on the Iberian Peninsula, and for a broad community of researchers and land managers working in areas where snowfall occurs.

Appendix A: Variable summary

Models and elevation correction methods:

Name	Acronym	Function
Weather research and forecasting	WRF	regional climate modeling
Factorial snow model	FSM	snowpack modeling
Relative humidity projection	HRm	project relative humidity
Barometric formula	Bf	project atmospheric pressure
Precipitation-phase partitioning	PPpm	divide precipitation phase (snow/rain)
Longwave model	LWm	estimate longwave incoming radiation

Variables:

Name	Acronym
Wind speed	Ua
Precipitation	Pr
Temperature	T
Relative humidity	RH
Atmospheric pressure	Ps
Shortwave incoming radiation	SW
Longwave incoming radiation	LW
Snowfall rate	Sf
Rainfall rate	Rf
Snow depth	SD
Snow water equivalent	SWE

Competing interests. The authors declare that they have no conflict of interest.

Special issue statement. This article is part of the special issue “Hydrometeorological data from mountain and alpine research catchments”. It is not associated with a conference.

Acknowledgements. Esteban Alonso-González is supported by the Spanish Ministry of Economy and Competitiveness (BES-2015-071466). This study was funded by the Spanish Ministry of Economy and Competitiveness projects CGL2014-52599-P 10 (Estudio del manto de nieve en la montaña española y su respuesta a la variabilidad y cambio climático) and CGL2017-82216-R (HIDROIBERNIEVE) and (with additional support from the European Community funds, FEDER) CGL2013-48539-R (*Impactos del cambio climático en los recursos hídricos de la cuenca del Duero a alta resolución*). Also, the Regional Government of Andalusia has funded this research with the project P11-RNM-7941 (*Impactos del Cambio Climático en la cuenca del Guadalquivir; LICUA*). The authors would like to express thanks to Hydrological Ebro River Basin Authority (CHE) for providing telenivometer data. Development of FSM is supported by NERC grant NE/P011926/1. Cotos snow data were provided by Consejería de Medio Ambiente, Administración Local y Ordenación del Territorio de la Comunidad de Madrid, from the meteorological network of Parque Natural de Peñalara. The authors sincerely thank Jan Magnusson for his help on the first steps of the use of FSM code.

Edited by: Danny Marks

Reviewed by: Javier Herrero and Benedita Santos

References

- Argüeso, D., Hidalgo-Muñoz, J. M., Gámiz-Fortis, S. R., Esteban-Parra, M. J., and Castro-Díez, Y.: Evaluation of WRF Mean and Extreme Precipitation over Spain: Present Climate (1970–99), *J. Climate*, 25, 4883–4897, <https://doi.org/10.1175/JCLI-D-11-00276.1>, 2012.
- Barnett, T. P., Adam, J. C., and Lettenmaier, D. P.: Potential impacts of a warming climate on water availability in snow-dominated regions, *Nature*, 438, 303–309, <https://doi.org/10.1038/nature04141>, 2005.
- Barry, R. and Chorley, R. J.: *Atmosphere, weather and climate*, Methuen & Co. Ltd., London., 1987.
- Bellaire, S., Jamieson, J. B., and Fierz, C.: Forcing the snow-cover model SNOWPACK with forecasted weather data, *The Cryosphere*, 5, 1115–1125, <https://doi.org/10.5194/tc-5-1115-2011>, 2011.
- Belo-Pereira, M., Dutra, E., and Viterbo, P.: Evaluation of global precipitation data sets over the Iberian Peninsula, *J. Geophys. Res.*, 116, D20101, <https://doi.org/10.1029/2010JD015481>, 2011.
- Berberan-Santos, M. N., Bodunov, E. N., and Pogliani, L.: On the barometric formula, *Am. J. Phys.*, 65, <https://doi.org/10.1119/1.18555>, 1997.
- Berrisford, P., Dee, D. P., Poli, P., Brugge, R., Fielding, K., Fuentes, M., Källberg, P. W., Kobayashi, S., Uppala, S., and Simmons, A.: The ERA-Interim archive Version 2.0, ERA Rep. Ser., 23, 2011.
- Brent, R. P. and Richard P.: *Algorithms for minimization without derivatives*, Prentice-Hall, 1972.
- Brun, E., Vionnet, V., Boone, A., Decharme, B., Peings, Y., Valette, R., Karbou, F., and Morin, S.: Simulation of Northern Eurasian Local Snow Depth, Mass, and Density Using a Detailed Snowpack Model and Meteorological Reanalyses, *J. Hydrometeorol.*, 14, 203–219, <https://doi.org/10.1175/JHM-D-12-012.1>, 2013.
- Chaudhuri, A. H., Ponte, R. M., Forget, G., and Heimbach, P.: A Comparison of Atmospheric Reanalysis Surface Products over the Ocean and Implications for Uncertainties in Air–Sea Boundary Forcing, *J. Climate*, 26, 153–170, <https://doi.org/10.1175/JCLI-D-12-00090.1>, 2013.
- Chen, F., Kusaka, H., Bornstein, R., Ching, J., Grimmond, C. S. B., Grossman-Clarke, S., Loridan, T., Manning, K. W., Martilli, A., Miao, S., Sailor, D., Salamanca, F. P., Taha, H., Tewari, M., Wang, X., Wyszogrodzki, A. A., and Zhang, C.: The integrated WRF/urban modelling system: development, evaluation, and applications to urban environmental problems, *Int. J. Climatol.*, 31, 273–288, <https://doi.org/10.1002/joc.2158>, 2011.
- Cohen, J.: A Coefficient of Agreement for Nominal Scales, *Educ. Psychol. Meas.*, 20, 37–46, <https://doi.org/10.1177/001316446002000104>, 1960.
- Dietz, A. J., Kuenzer, C., Gessner, U., and Dech, S.: Remote sensing of snow – a review of available methods, *Int. J. Remote Sens.*, 33, 4094–4134, <https://doi.org/10.1080/01431161.2011.640964>, 2012.
- Dozier, J., Bair, E. H., and Davis, R. E.: Estimating the spatial distribution of snow water equivalent in the world’s mountains, *Wiley Interdiscip. Rev. Water*, 3, 461–474, <https://doi.org/10.1002/wat2.1140>, 2016.
- Durán, L., Rodríguez-Muñoz, I., and Sánchez, E.: The Peñalara Mountain Meteorological Network (1999–2014): Description, Preliminary Results and Lessons Learned, *Atmosphere*, 8, 203, <https://doi.org/10.3390/atmos8100203>, 2017.
- Essery, R.: A factorial snowpack model (FSM 1.0), *Geosci. Model Dev.*, 8, 3867–3876, <https://doi.org/10.5194/gmd-8-3867-2015>, 2015.
- Essery, R., Martin, E., Douville, H., Fernández, A., and Brun, E.: A comparison of four snow models using observations from an alpine site, *Clim. Dynam.*, 15, 583–593, <https://doi.org/10.1007/s003820050302>, 1999.
- Essery, R., Morin, S., Lejeune, Y., and Menard, C.: A comparison of 1701 snow models using observations from an alpine site, *Adv. Water Resour.*, 55, 131–148, <https://doi.org/10.1016/j.advwatres.2012.07.013>, 2013.
- Fayad, A., Gascoïn, S., Faour, G., López-Moreno, J. I., Drapeau, L., Le Page, M., and Escadafal, R.: Snow hydrology in Mediterranean mountain regions: A review, *J. Hydrol.*, 551, 374–396, <https://doi.org/10.1016/j.jhydrol.2017.05.063>, 2017.
- Fleiss, J. L., Cohen, J., and Everitt, B. S.: Large sample standard errors of kappa and weighted kappa, *Psychol. Bull.*, 72, 323–327, <https://doi.org/10.1037/h0028106>, 1969.
- García-Ruiz, J. M., López-Moreno, J. I., Vicente-Serrano, S. M., Lasanta-Martínez, T., and Beguería, S.: Mediterranean water resources in a global change scenario, *Earth-Sci. Rev.*, 105, 121–139, <https://doi.org/10.1016/j.earscirev.2011.01.006>, 2011.

- García-Valdecasas-Ojeda, M., De Franciscis, S., Raquel Gámiz-Fortis, S., Castro-Díez, Y., and Esteban-Parra, M. J.: Evaluation of high-resolution WRF climate simulations for hydrological variables over Iberian Peninsula, *Geophys. Res. Abstr.*, 14153, EGU General Assembly 2016, Vienna, Austria, 2016.
- García-Valdecasas Ojeda, M., Gámiz-Fortis, S. R., Castro-Díez, Y., and Esteban-Parra, M. J.: Evaluation of WRF capability to detect dry and wet periods in Spain using drought indices, *J. Geophys. Res.-Atmos.*, 122, 1569–1594, <https://doi.org/10.1002/2016JD025683>, 2017.
- Gascoïn, S., Lhermitte, S., Kinnard, C., Bortels, K., and Liston, G. E.: Wind effects on snow cover in Pascua-Lama, Dry Andes of Chile, *Adv. Water Resour.*, 55, 25–39, <https://doi.org/10.1016/j.advwatres.2012.11.013>, 2013.
- Gascoïn, S., Hagolle, O., Huc, M., Jarlan, L., Dejoux, J.-F., Szczypta, C., Marti, R., and Sánchez, R.: A snow cover climatology for the Pyrenees from MODIS snow products, *Hydrol. Earth Syst. Sci.*, 19, 2337–2351, <https://doi.org/10.5194/hess-19-2337-2015>, 2015.
- Gilaberte-Búrdalo, M., López-Martín, F., Pino-Otín, M. R., and López-Moreno, J. I.: Impacts of climate change on ski industry, *Environ. Sci. Policy*, 44, 51–61, <https://doi.org/10.1016/j.envsci.2014.07.003>, 2014.
- Gilaberte-Búrdalo, M., López-Moreno, J. I., Morán-Tejeda, E., Jerez, S., Alonso-González, E., López-Martín, F., and Pino-Otín, M. R.: Assessment of ski condition reliability in the Spanish and Andorran Pyrenees for the second half of the 20th century, *Appl. Geogr.*, 79, 127–142, <https://doi.org/10.1016/j.apgeog.2016.12.013>, 2017.
- Gutmann, E. D., Rasmussen, R. M., Liu, C., Ikeda, K., Gochis, D. J., Clark, M. P., Dudhia, J., and Thompson, G.: A Comparison of Statistical and Dynamical Downscaling of Winter Precipitation over Complex Terrain, *J. Climate*, 25, 262–281, <https://doi.org/10.1175/2011JCLI4109.1>, 2012.
- Hall, K., D., Riggs, G. A., and Salomonson, V. V.: MODIS/Terra Snow Cover Daily L3 Global 500m Grid V005, 2006.
- Harder, P. and Pomeroy, J.: Estimating precipitation phase using a psychrometric energy balance method, *Hydrol. Process.*, 27, 1901–1914, <https://doi.org/10.1002/hyp.9799>, 2013.
- Heikkilä, U., Sandvik, A., and Sorteberg, A.: Dynamical downscaling of ERA-40 in complex terrain using the WRF regional climate model, *Clim. Dynam.*, 37, 1551–1564, <https://doi.org/10.1007/s00382-010-0928-6>, 2011.
- Herrera, S., Gutiérrez, J. M., Ancell, R., Pons, M. R., Frías, M. D., and Fernández, J.: Development and analysis of a 50-year high-resolution daily gridded precipitation dataset over Spain (Spain02), *Int. J. Climatol.*, 32, 74–85, <https://doi.org/10.1002/joc.2256>, 2012.
- ISO: ISO 2533:1975 – Standard Atmosphere, 108, available at: http://www.iso.org/iso/catalogue_detail?csnumber=7472 (last access: 1 February 2017), 1975.
- Iziomon, M. G., Mayer, H., and Matzarakis, A.: Downward atmospheric longwave irradiance under clear and cloudy skies: Measurement and parameterization, *J. Atmos. Sol.-Terr. Phys.*, 65, 1107–1116, <https://doi.org/10.1016/j.jastp.2003.07.007>, 2003.
- Keller, F., Kienast, F., and Beniston, M.: Evidence of response of vegetation to environmental change on high-elevation sites in the Swiss Alps, *Reg. Environ. Change*, 1, 70–77, <https://doi.org/10.1007/PL00011535>, 2000.
- Kinar, N. J. and Pomeroy, J. W.: Measurement of the physical properties of the snowpack, *Rev. Geophys.*, 53, 481–544, <https://doi.org/10.1002/2015RG000481>, 2015.
- Krogh, S. A., Pomeroy, J. W., and McPhee, J.: Physically Based Mountain Hydrological Modeling Using Reanalysis Data in Patagonia, *J. Hydrometeorol.*, 16, 172–193, <https://doi.org/10.1175/JHM-D-13-0178.1>, 2015.
- Kryza, M., Wałaszek, K., Ojrzyńska, H., Szymanowski, M., Werner, M. and Dore, A. J.: High-Resolution Dynamical Downscaling of ERA-Interim Using the WRF Regional Climate Model for the Area of Poland. Part 1: Model Configuration and Statistical Evaluation for the 1981–2010 Period, *Pure Appl. Geophys.*, 174, 511–526, <https://doi.org/10.1007/s00024-016-1272-5>, 2017.
- Landis, J. R. and Koch, G. G.: The Measurement of Observer Agreement for Categorical Data, *Biometrics*, 33, 159–174, <https://doi.org/10.2307/2529310>, 1977.
- Liston, G. E. and Elder, K.: A Distributed Snow-Evolution Modeling System (SnowModel), *J. Hydrometeorol.*, 7, 1259–1276, <https://doi.org/10.1175/JHM548.1>, 2006a.
- Liston, G. E. and Elder, K.: A Meteorological Distribution System for High-Resolution Terrestrial Modeling (MicroMet), *J. Hydrometeorol.*, 7, 217–234, <https://doi.org/10.1175/JHM486.1>, 2006b.
- López-Moreno, J. I. and García-Ruiz, J. M.: Influence of snow accumulation and snowmelt on streamflow in the central Spanish Pyrenees Influence de l'accumulation et de la fonte de la neige sur les écoulements dans les Pyrénées centrales espagnoles, *Hydrol. Sci. J.*, 49, p. 802, <https://doi.org/10.1623/hysj.49.5.787.55135>, 2004.
- López-Moreno, J. I., Goyette, S., Vicente-Serrano, S. M., and Beniston, M.: Effects of climate change on the intensity and frequency of heavy snowfall events in the Pyrenees, *Climatic Change*, 105, 489–508, <https://doi.org/10.1007/s10584-010-9889-3>, 2011.
- López-Moreno, J. I., Revuelto, J., Fassnacht, S. R., Azorín-Molina, C., Vicente-Serrano, S. M., Morán-Tejeda, E., and Sextone, G. A.: Snowpack variability across various spatio-temporal resolutions, *Hydrol. Process.*, 29, 1213–1224, <https://doi.org/10.1002/hyp.10245>, 2015.
- Magnusson, J., Wever, N., Essery, R., Helbig, N., Winstral, A., and Jonas, T.: Evaluating snow models with varying process representations for hydrological applications, *Water Resour. Res.*, 51, 2707–2723, <https://doi.org/10.1002/2014WR016498>, 2015.
- Mass, C. F., Ovens, D., Westrick, K., and Colle, B. A.: Does Increasing Horizontal Resolution Produce More Skillful Forecasts?, *B. Am. Meteorol. Soc.*, 83, 407–430, [https://doi.org/10.1175/1520-0477\(2002\)083<0407:DIHRPM>2.3.CO;2](https://doi.org/10.1175/1520-0477(2002)083<0407:DIHRPM>2.3.CO;2), 2002.
- Meromy, L., Molotch, N. P., Link, T. E., Fassnacht, S. R., and Rice, R.: Subgrid variability of snow water equivalent at operational snow stations in the western USA, *Hydrol. Process.*, 27, 2383–2400, <https://doi.org/10.1002/hyp.9355>, 2013.
- Morán-Tejeda, E., Lorenzo-Lacruz, J., López-Moreno, J. I., Rahman, K., and Beniston, M.: Streamflow timing of mountain rivers in Spain: Recent changes and future projections, *J. Hydrol.*, 517, 1114–1127, <https://doi.org/10.1016/j.jhydrol.2014.06.053>, 2014.
- Navarro-Serrano, F. M. and López-Moreno, J. I.: Spatio-temporal analysis of snowfall events in the Spanish Pyrenees and their relationship to atmospheric circulation, *Cuad. Investig. Geográfica*, 43, 233–254, <https://doi.org/10.18172/cig.3042>, 2017.

- Quéno, L., Vionnet, V., Dombrowski-Etchevers, I., Lafaysse, M., Dumont, M., and Karbou, F.: Snowpack modelling in the Pyrenees driven by kilometric-resolution meteorological forecasts, *The Cryosphere*, 10, 1571–1589, <https://doi.org/10.5194/tc-10-1571-2016>, 2016.
- Raleigh, M. S., Livneh, B., Lapo, K., and Lundquist, J. D.: How Does Availability of Meteorological Forcing Data Impact Physically Based Snowpack Simulations?, *J. Hydrometeorol.*, 17, 99–120, <https://doi.org/10.1175/JHM-D-14-0235.1>, 2016.
- Revuelto, J., Jonas, T., and López-Moreno, J.-I.: Backward snow depth reconstruction at high spatial resolution based on time-lapse photography, *Hydrol. Process.*, 30, 2976–2990, <https://doi.org/10.1002/hyp.10823>, 2016.
- Saha, S., Moorthi, S., Pan, H.-L., Wu, X., Wang, J., Nadiga, S., Tripp, P., Kistler, R., Woollen, J., Behringer, D., Liu, H., Stokes, D., Grumbine, R., Gayno, G., Wang, J., Hou, Y.-T., Chuang, H.-Y., Juang, H.-M. H., Sela, J., Iredell, M., Treadon, R., Kleist, D., Van Delst, P., Keyser, D., Derber, J., Ek, M., Meng, J., Wei, H., Yang, R., Lord, S., Van Den Dool, H., Kumar, A., Wang, W., Long, C., Chelliah, M., Xue, Y., Huang, B., Schemm, J.-K., Ebisuzaki, W., Lin, R., Xie, P., Chen, M., Zhou, S., Higgins, W., Zou, C.-Z., Liu, Q., Chen, Y., Han, Y., Cucurull, L., Reynolds, R. W., Rutledge, and Goldberg, G.: The NCEP Climate Forecast System Reanalysis, *B. Am. Meteorol. Soc.*, 91, 1015–1057, <https://doi.org/10.1175/2010BAMS3001.1>, 2010.
- Sanmiguel-Vallelado, A., Morán-Tejeda, E., Alonso-González, E., and López-Moreno, J. I.: Effect of snow on mountain river regimes: an example from the Pyrenees, *Front. Earth Sci.*, 11, 515–530, <https://doi.org/10.1007/s11707-016-0630-z>, 2017.
- Skamarock, W. C., Klemp, J. B., Dudhia, J., Gill, D. O., Barker, D. M., Dudha, M. G., Huang, X., Wang, W., and Powers, Y.: A Description of the Advanced Research WRF Version 3, NCAR Tech. Note NCAR/TN-475+STR, <https://doi.org/10.5065/D68S4MVH>, 2008.
- Snauffer, A. M., Hsieh, W. W., and Cannon, A. J.: Comparison of gridded snow water equivalent products with in situ measurements in British Columbia, Canada, *J. Hydrol.*, 541, , 714–726, <https://doi.org/10.1016/j.jhydrol.2016.07.027>, 2016.
- van Pelt, W. J. J., Kohler, J., Liston, G. E., Hagen, J. O., Luks, B., Reijmer, C. H., and Pohjola, V. A.: Multidecadal climate and seasonal snow conditions in Svalbard, *J. Geophys. Res.-Earth*, 121, 2100–2117, <https://doi.org/10.1002/2016JF003999>, 2016.
- Viviroli, D., Dürr, H. H., Messerli, B., Meybeck, M., and Weingartner, R.: Mountains of the world, water towers for humanity: Typology, mapping, and global significance, *Water Resour. Res.*, 43, W07447, <https://doi.org/10.1029/2006WR005653>, 2007.
- Walcek, C. J.: Cloud Cover and Its Relationship to Relative Humidity during a Springtime Midlatitude Cyclone, *Mon. Weather Rev.*, 122, 1021–1035, [https://doi.org/10.1175/1520-0493\(1994\)122<1021:CCAIRT>2.0.CO;2](https://doi.org/10.1175/1520-0493(1994)122<1021:CCAIRT>2.0.CO;2), 1994.
- Warrach-Sagi, K., Schwitalla, T., Wulfmeyer, V., and Bauer, H.-S.: Evaluation of a climate simulation in Europe based on the WRF–NOAH model system: precipitation in Germany, *Clim. Dynam.*, 41, 755–774, <https://doi.org/10.1007/s00382-013-1727-7>, 2013.
- Wegmann, M., Orsolini, Y., Dutra, E., Bulygina, O., Sterin, A., and Brönnimann, S.: Eurasian snow depth in long-term climate reanalyses, *The Cryosphere*, 11, 923–935, <https://doi.org/10.5194/tc-11-923-2017>, 2017.
- Wipf, S., Stoeckli, V., and Bebi, P.: Winter climate change in alpine tundra: plant responses to changes in snow depth and snowmelt timing, *Climatic Change*, 94, 105–121, <https://doi.org/10.1007/s10584-009-9546-x>, 2009.
- Wrzesien, M. L., Durand, M. T., Pavelsky, T. M., Howat, I. M., Margulis, S. A., and Huning, L. S.: Comparison of Methods to Estimate Snow Water Equivalent at the Mountain Range Scale: A Case Study of the California Sierra Nevada, *J. Hydrometeorol.*, 18, 1101–1119, <https://doi.org/10.1175/JHM-D-16-0246.1>, 2017.
- Wu, X., Shen, Y., Wang, N., Pan, X., Zhang, W., He, J., and Wang, G.: Coupling the WRF model with a temperature index model based on remote sensing for snowmelt simulations in a river basin in the Altay Mountains, north-west China, *Hydrol. Process.*, 30, 3967–3977, <https://doi.org/10.1002/hyp.10924>, 2016.